



Back & Forth



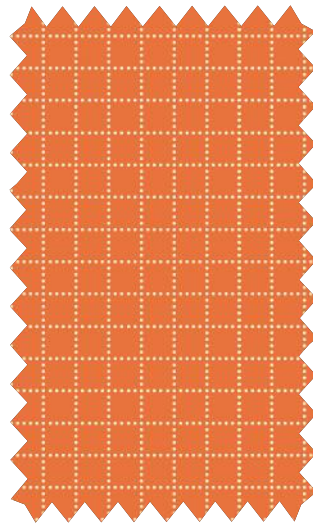


# Back & Forth

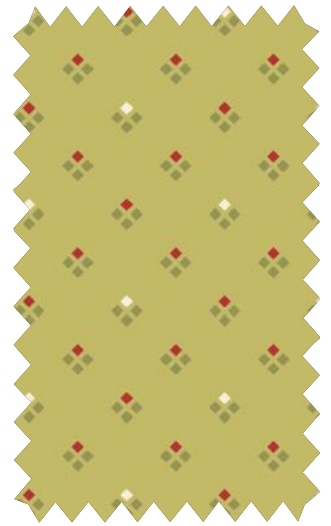
Warm shades of blue, green and reds form the base of this timeless collection.

With a wink back to the floral fabrics from colonial times and a glimpse into the future with more geometrical prints, this collection combines past and present, and offers a wonderful range of fabrics for both the traditional and modern maker!





BF 23 10 02  
Square Dance - Carrot



BF 23 08 03  
Argyle - Chartreuse



BF 23 07 02  
Maple Leaf - Pear



BF 23 12 01  
Zigzag - Green Hills



BF 23 11 02  
Butterflies - Pear



BF 23 09 03  
Foliage - Green Hills



BF 23 08 01  
Argyle - Cotton



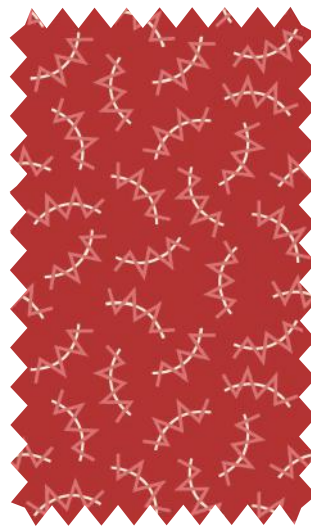
BF 23 07 01  
Maple Leaf - Frosted Pink



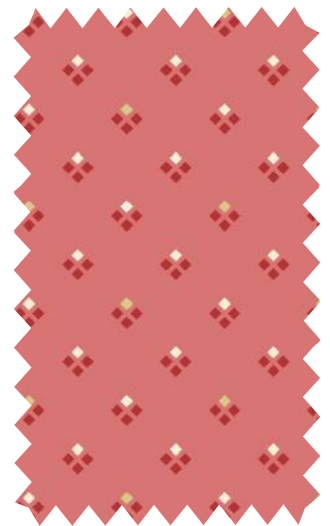
BF 23 09 01  
Foliage - Strawberry Smoothie



BF 23 11 01  
Butterflies - Rosehip

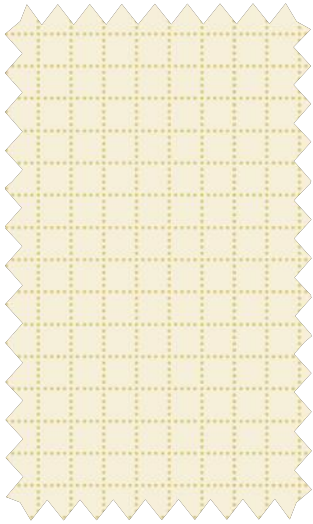


BF 23 12 02  
Zigzag - Rosehip



BF 23 08 02  
Argyle - Strawberry Smoothie





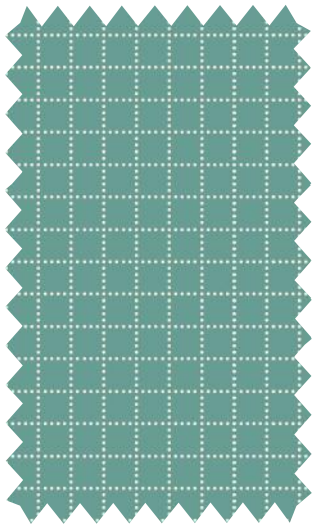
BF 23 10 01  
Square Dance - Cotton



BF 23 07 03  
Maple Leaf - Glacier Blue



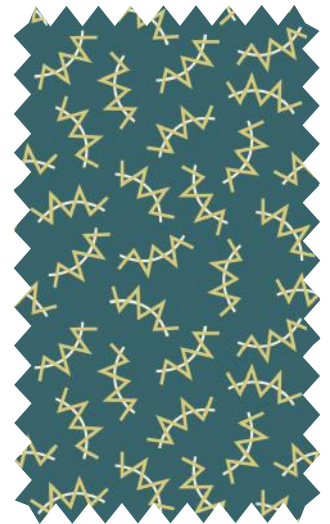
BF 23 09 02  
Foliage - Glacier Blue



BF 23 10 03  
Square Dance - Blue Jade



BF 23 11 03  
Butterflies - Deep Blue



BF 23 12 03  
Zigzag - Deep Blue





Coopers Crossing / 23214  
87" x 87" (218 x 218 cm)

SKU	1 Kit*	Bolts / 10 kits*
BF 23 07 01	10" x 44" (25 x 110 cm)	½
BF 23 07 02	10" x 44" (25 x 110 cm)	½
BF 23 07 03	10" x 44" (25 x 110 cm)	½
BF 23 08 01	38" x 44" (95 x 110 cm)	1 ½
BF 23 08 02	10" x 44" (25 x 110 cm)	½
BF 23 08 03	34" x 44" (85 x 110 cm)	1
BF 23 09 01	10" x 44" (25 x 110 cm)	½
BF 23 09 02	10" x 44" (25 x 110 cm)	½
BF 23 09 03	10" x 44" (25 x 110 cm)	½

SKU	1 Kit*	Bolts / 10 kits*
BF 23 10 01	120" x 44" (300 x 110 cm)	3 ½
BF 23 10 02	10" x 44" (25 x 110 cm)	½
BF 23 10 03	10" x 44" (25 x 110 cm)	½
BF 23 11 01	88" x 44" (220 x 110 cm)	2 ½
BF 23 11 02	10" x 44" (25 x 110 cm)	½
BF 23 11 03	10" x 44" (25 x 110 cm)	½
BF 23 12 01	10" x 44" (25 x 110 cm)	½
BF 23 12 02	10" x 44" (25 x 110 cm)	½
BF 23 12 03	10" x 44" (25 x 110 cm)	½

\* Top + binding (backing not included)



Color variation

Flower Pillow / 23216  
21" x 29" (52 x 72 cm)

SKU	1 Kit*	Bolts / 10 kits*
BF 23 07 01	8" x 14" (20 x 35 cm)	½
BF 23 07 02	10" x 44" (25 x 110 cm)	½
BF 23 07 03	4" x 4" (10 x 10 cm)	½
BF 23 08 01	6" x 6" (15 x 15 cm)	½
BF 23 08 02	4" x 6" (10 x 15 cm)	½
BF 23 08 03	6" x 6" (15 x 15 cm)	½
BF 23 09 01	10" x 12" (25 x 30 cm)	½
BF 23 09 02	44" x 44" (110 x 110 cm)	1 ½
BF 23 09 03	8" x 8" (20 x 20 cm)	½

SKU	1 Kit*	Bolts / 10 kits*
BF 23 10 01	4" x 12" (10 x 30 cm)	3 ½
BF 23 10 02	10" x 10" (25 x 25 cm)	½
BF 23 10 03	4" x 4" (10 x 10 cm)	½
BF 23 11 01	8" x 8" (20 x 20 cm)	2 ½
BF 23 11 02	4" x 4" (10 x 10 cm)	½
BF 23 11 03	4" x 4" (10 x 10 cm)	½
BF 23 12 01	2" x 4" (5 x 10 cm)	½
BF 23 12 02	2" x 8" (5 x 20 cm)	½
BF 23 12 03	22" x 30" (55 x 75 cm)	1

\* Top + binding + back





Line Dance / 232107  
70" x 70" (175 x 175 cm)

SKU	1 Kit*	Bolts / 10 kits*
BF 23 07 01	6" x 44" (15 x 110 cm)	½
BF 23 07 02	12" x 44" (30 x 110 cm)	½
BF 23 07 03	6" x 44" (15 x 110 cm)	½
BF 23 08 01	48" x 44" (120 x 110 cm)	1 ½
BF 23 08 02	6" x 44" (15 x 110 cm)	½
BF 23 08 03	10" x 44" (25 x 110 cm)	½
BF 23 09 01	6" x 44" (15 x 110 cm)	½
BF 23 09 02	6" x 44" (15 x 110 cm)	½
BF 23 09 03	6" x 44" (15 x 110 cm)	½

SKU	1 Kit*	Bolts / 10 kits*
BF 23 10 01	94" x 44" (235 x 110 cm)	3 ½
BF 23 10 02	12" x 44" (30 x 110 cm)	½
BF 23 10 03	8" x 44" (20 x 110 cm)	½
BF 23 11 01	6" x 44" (15 x 110 cm)	½
BF 23 11 02	8" x 44" (20 x 110 cm)	½
BF 23 11 03	8" x 44" (20 x 110 cm)	½
BF 23 12 01	8" x 44" (20 x 110 cm)	½
BF 23 12 02	28" x 44" (70 x 110 cm)	1
BF 23 12 03	12" x 44" (30 x 110 cm)	½

\* Top + binding (backing not included)



Summer / 23215  
70" x 24 1/2" (175 x 61 cm)

SKU	1 Kit*	Bolts / 10 kits*
BF 23 07 01	3" x 8" (8 x 20 cm)	1/2
BF 23 07 02	16" x 44" (40 x 110 cm)	1
BF 23 07 03	3" x 22" (8 x 55 cm)	1/2
BF 23 08 01	28" x 44" (70 x 110 cm)	1
BF 23 08 02	3" x 44" (8 x 110 cm)	1/2
BF 23 08 03	3" x 22" (8 x 55 cm)	1/2
BF 23 09 01	3" x 22" (8 x 55 cm)	1/2
BF 23 09 02	3" x 14" (8 x 30 cm)	1/2
BF 23 09 03	3" x 22" (8 x 55 cm)	1/2

SKU	1 Kit*	Bolts / 10 kits*
BF 23 10 01	22" x 44" (55 x 110 cm)	1
BF 23 10 02	3" x 30" (8 x 75 cm)	1/2
BF 23 10 03	18" x 44" (45 x 110 cm)	1
BF 23 11 01	3" x 30" (8 x 75 cm)	1/2
BF 23 11 02	3" x 6" (8 x 15 cm)	1/2
BF 23 11 03	3" x 16" (8 x 40 cm)	1/2
BF 23 12 01	3" x 22" (8 x 55 cm)	1/2
BF 23 12 02	6" x 44" (15 x 110 cm)	1/2
BF 23 12 03	3" x 30" (8 x 75 cm)	1/2

\* Top + binding (backing not included)

Variation tip





Back & Forth Bag / 23218  
12" x 8" x 10" (30 x 20 x 25 cm)



Variation tip

SKU	1 Kit	Bolts / 10 kits
BF 23 07 01	4" x 4" (10 x 10 cm)	½
BF 23 07 02	/	/
BF 23 07 03	22" x 44" (55 x 110 cm)	1
BF 23 08 01	/	/
BF 23 08 02	22" x 44" (55 x 110 cm)	1
BF 23 08 03	4" x 4" (10 x 10 cm)	½
BF 23 09 01	/	/
BF 23 09 02	/	/
BF 23 09 03	2" x 4" (5 x 10 cm)	½
BF 23 10 01	12" x 12" (30 x 30 cm)	½
BF 23 10 02	/	/
BF 23 10 03	/	/
BF 23 11 01	6" x 6" (15 x 15 cm)	½
BF 23 11 02	/	/
BF 23 11 03	/	/
BF 23 12 01	4" x 4" (10 x 10 cm)	½
BF 23 12 02	/	/
BF 23 12 03	3" x 3" (8 x 8 cm)	½



EQP Textiles is a family company  
based in Belgium,  
founded in 2006 by Ellen Remijnse.

We combine our interest in antique quilts with a  
fresh and modern country touch to create  
our own style.

EQP aims to create beautiful collections of fabrics  
and patterns with a European influence for  
patchwork, quilting, crafts and sewing.

Welcome to the world of EQP!



EQP Textiles  
[www.eqptextiles.com](http://www.eqptextiles.com)

Statement on colors: actual product colors may vary from colors shown in the brochure.