

## Example Quilt

---



**Tomorrow's Heritage Quilt**  
50 cm x 50 cm / 20" x 20"

**Free pattern**  
Available on our website - Autumn 2020  
[www.elliesquiltplace.com](http://www.elliesquiltplace.com)

## About the collection

---



When you say 'antique quilts', many people think of quilts in deep reds, dark browns and ecru shirtings instead of bright, shiny colors. Over the years, antique quilts have often been washed and used and the bright colors that the makers used have faded. So even though we don't immediately link antique quilts with daffodil yellow, light blues and sparkling pinks, people did love to work with them!

With this idea in mind, we designed 'Tomorrow's Heritage': a lovely collection that captures the bright Spring colors in lovely floral prints and warm basics. We're sure 'Tomorrow's Heritage' will inspire you to create beautiful projects!

## About Ellie's Quiltplace

---



EQP Textiles or Ellie's Quiltplace is a family company based in Belgium, founded in 2006 by Ellen Remijnse. We combine our interest in antique quilts with a fresh and modern country touch to create our own style. EQP aims to create beautiful collections of fabrics and patterns with a European influence for patchwork, quilting, crafts and sewing.

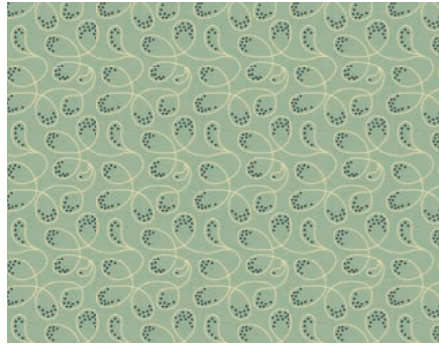
Welcome to the world of Ellie's Quiltplace!



## Tomorrow's Heritage by Ellie's Quiltplace

— EQP TEXTILES —

## Dancing Queen



**Glacier Blue**  
TH 200 201

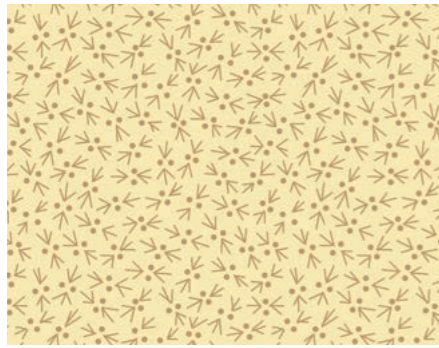


**Ecu**  
TH 200 202

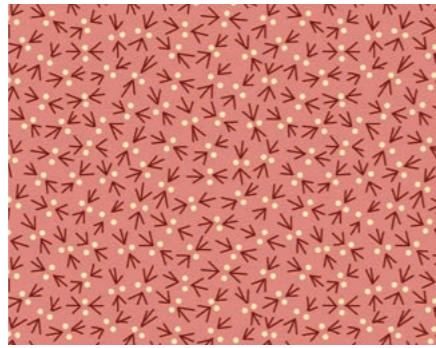


**Cranberry Red**  
TH 200 203

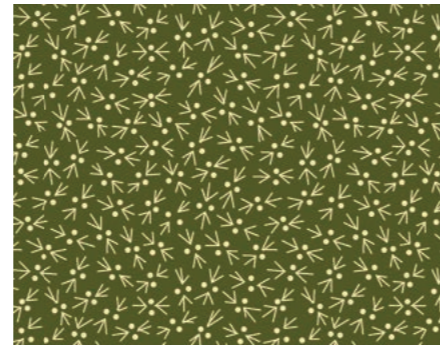
## Snowbird



**Ecu**  
TH 200 501



**Coral Pink**  
TH 200 502



**Juniper Green**  
TH 200 503

## Summer Meadow



**Daffodil**  
TH 200 101



**Cranberry Red**  
TH 200 102



**Sage Green**  
TH 200 103

## Bridal Bouquet



**Glacier Blue**  
TH 200 401

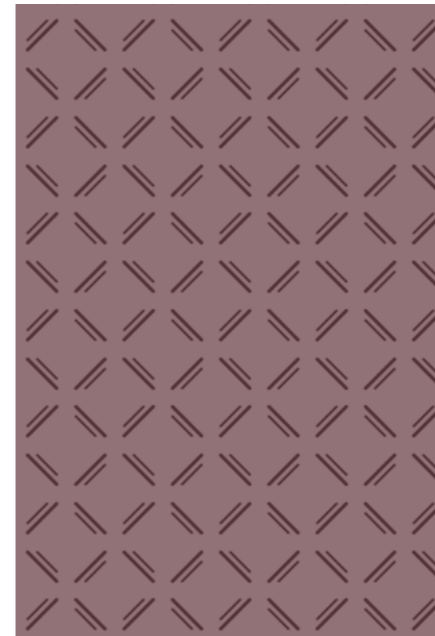


**Daffodil**  
TH 200 402



**Ecu**  
TH 200 403

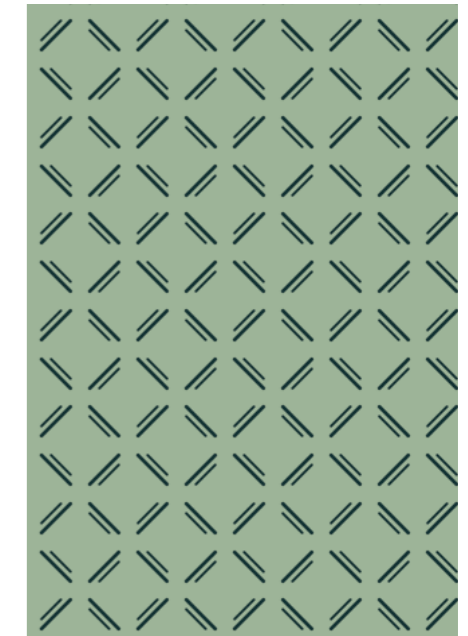
## Log Cabin



**Dove**  
TH 200 301



**Sage Green**  
TH 200 302



**Glacier Blue**  
TH 200 303