

# Flood Monitoring from the ground From Glofas RRA to impacts from social media

2<sup>nd</sup> Global Flood Forecasting and Monitoring Meeting

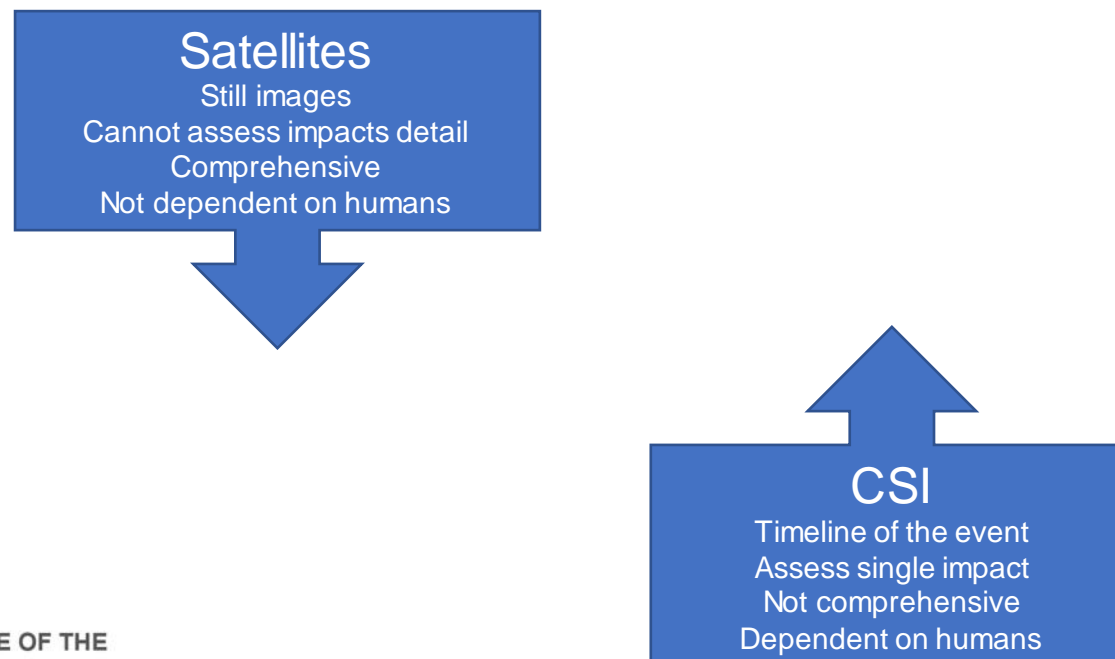
Valerio Lorini – JRC

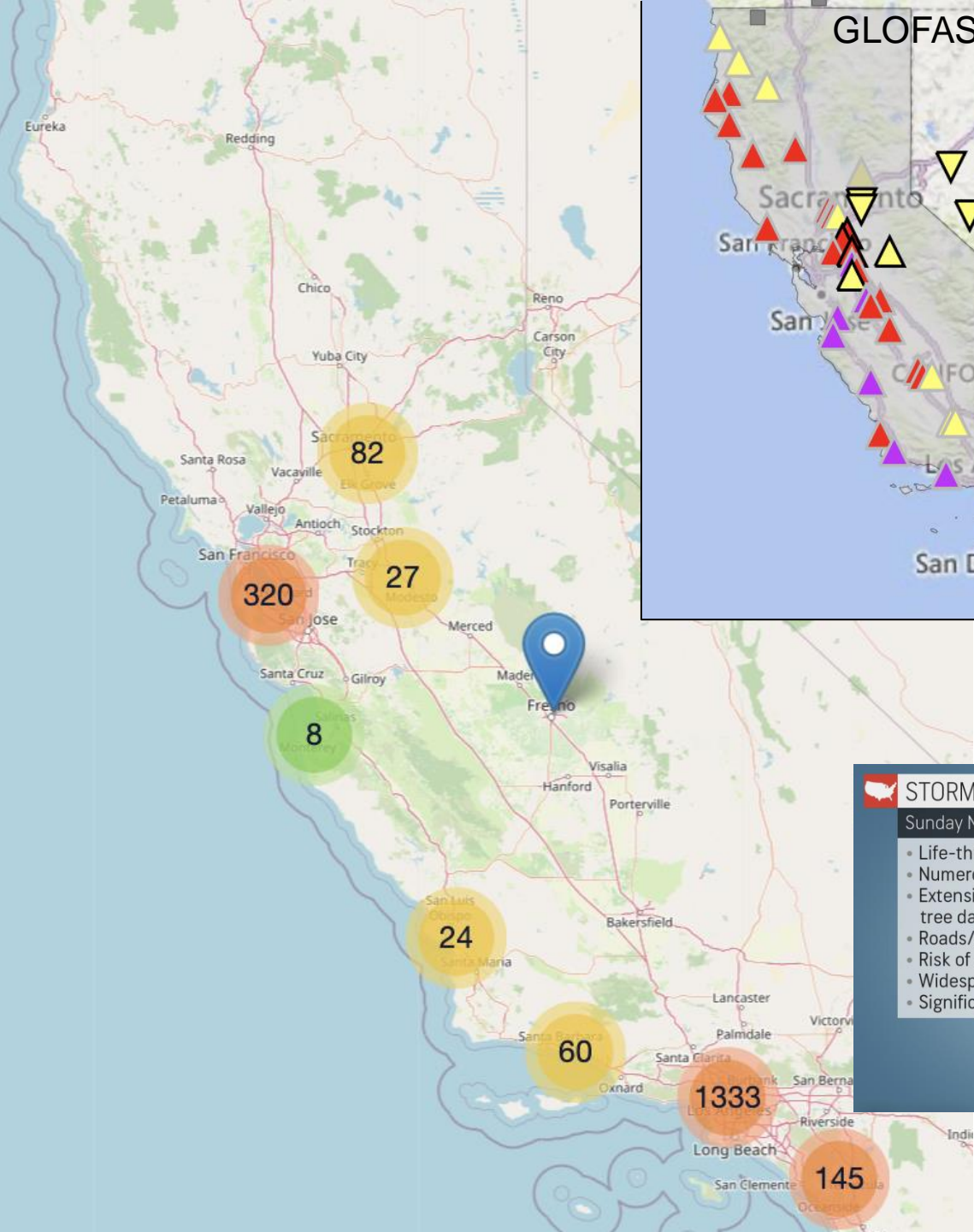


**COPERNICUS  
EMERGENCY  
MANAGEMENT  
SERVICE**

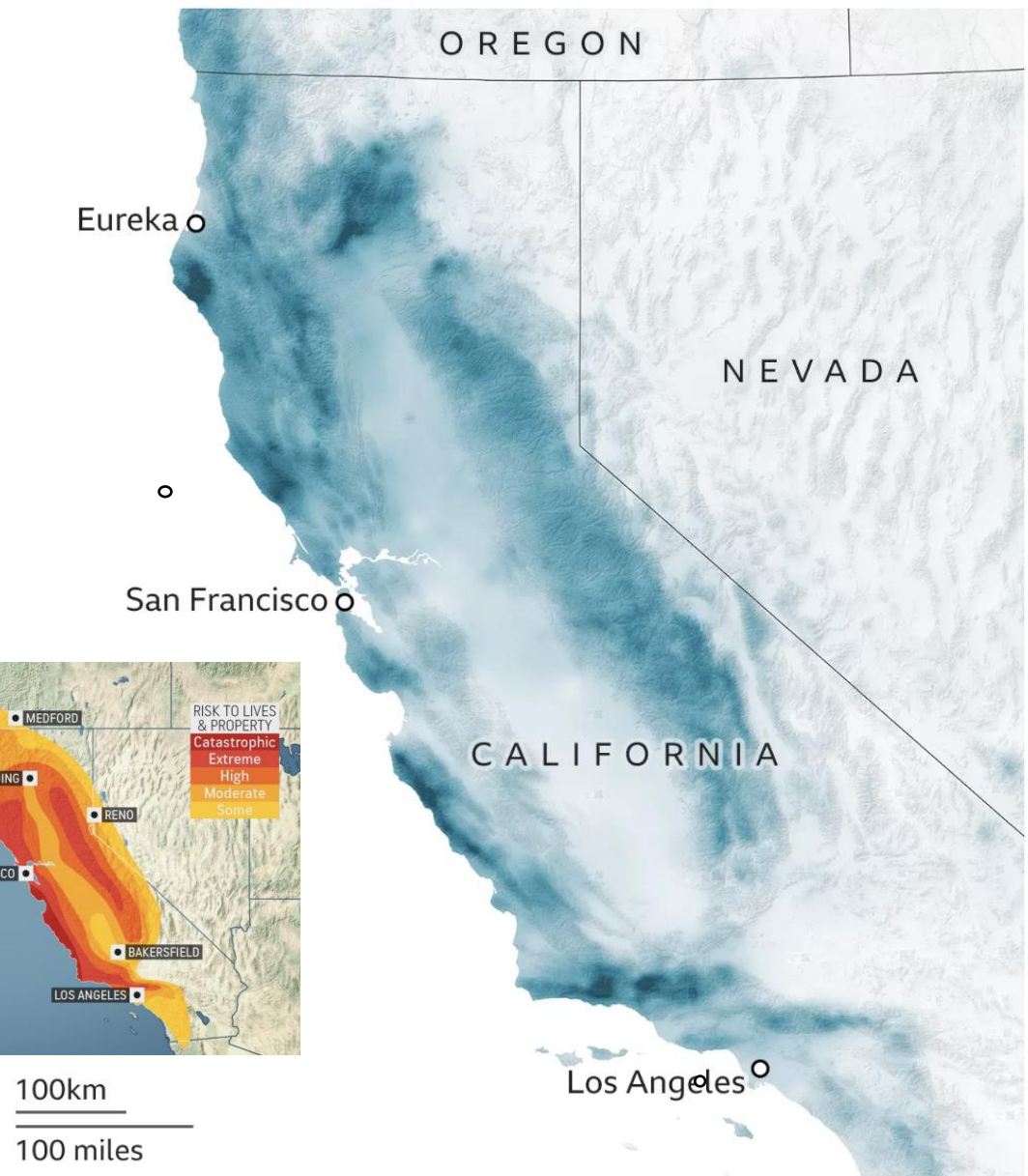
Emergency managers can **assess impacts** during a natural disaster through **visual assessments, communication with local authorities and community members, and the use of technology such as drones or satellite imagery**. Additionally, the use of **citizen-generated data** (e.g. social media posts, news articles, and videos) can enhance situational awareness by providing real-time information about impacts. **Artificial intelligence** can process large amount of information and provide insights in a much faster time frame than traditional methods.

The use of **AI** and **Crowd Sourced Information (CSI)** can help emergency managers to assess impacts in **near real-time** and make informed decisions to support disaster response and recovery efforts.





Precipitation accumulation for the past 14 days, in mm



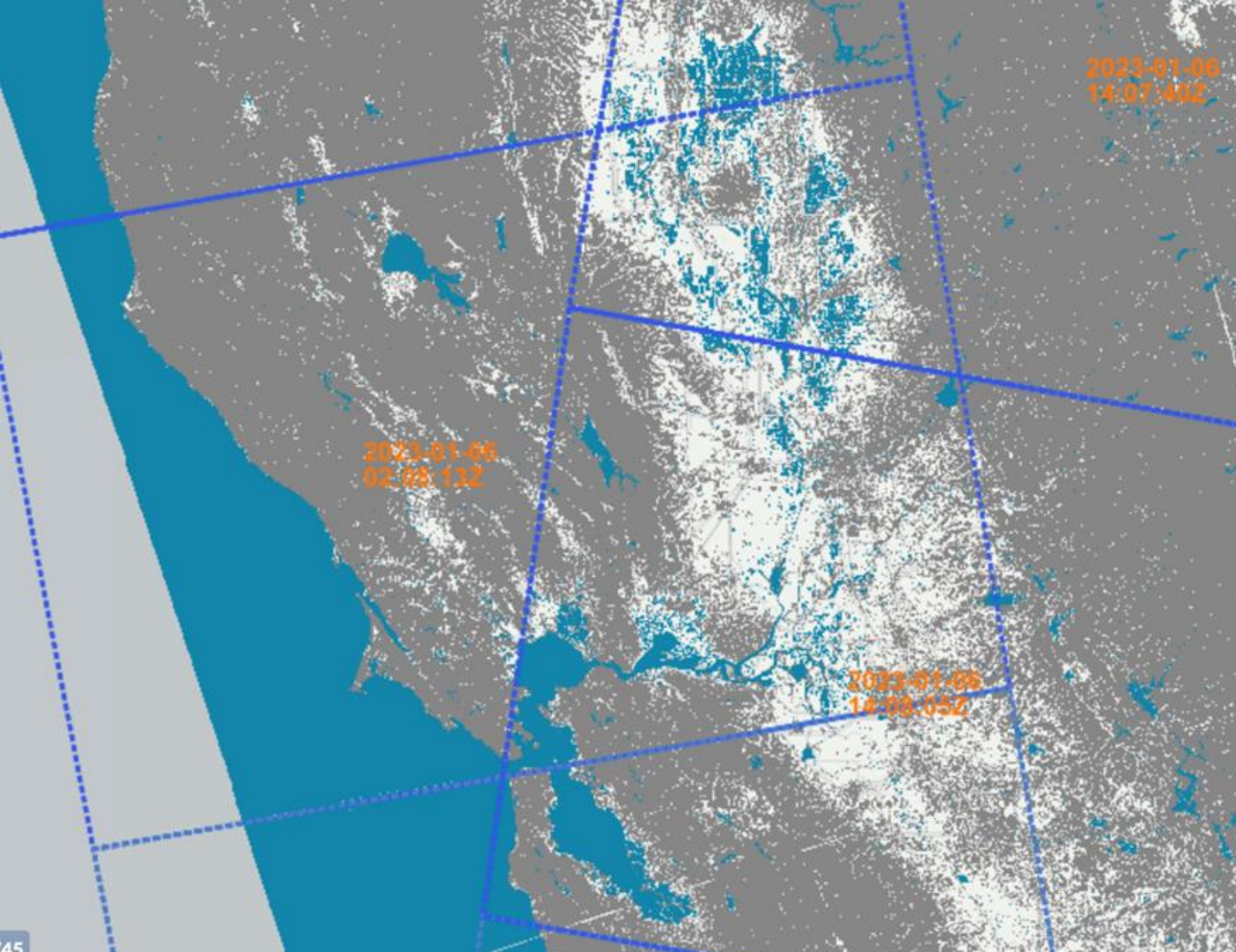
**STORM IMPACTS**

Sunday Night-Tuesday

- Life-threatening flooding
- Numerous landslides
- Extensive property and tree damage
- Roads/bridges washed out
- Risk of dam or levee failure
- Widespread power outages
- Significant coastal flooding

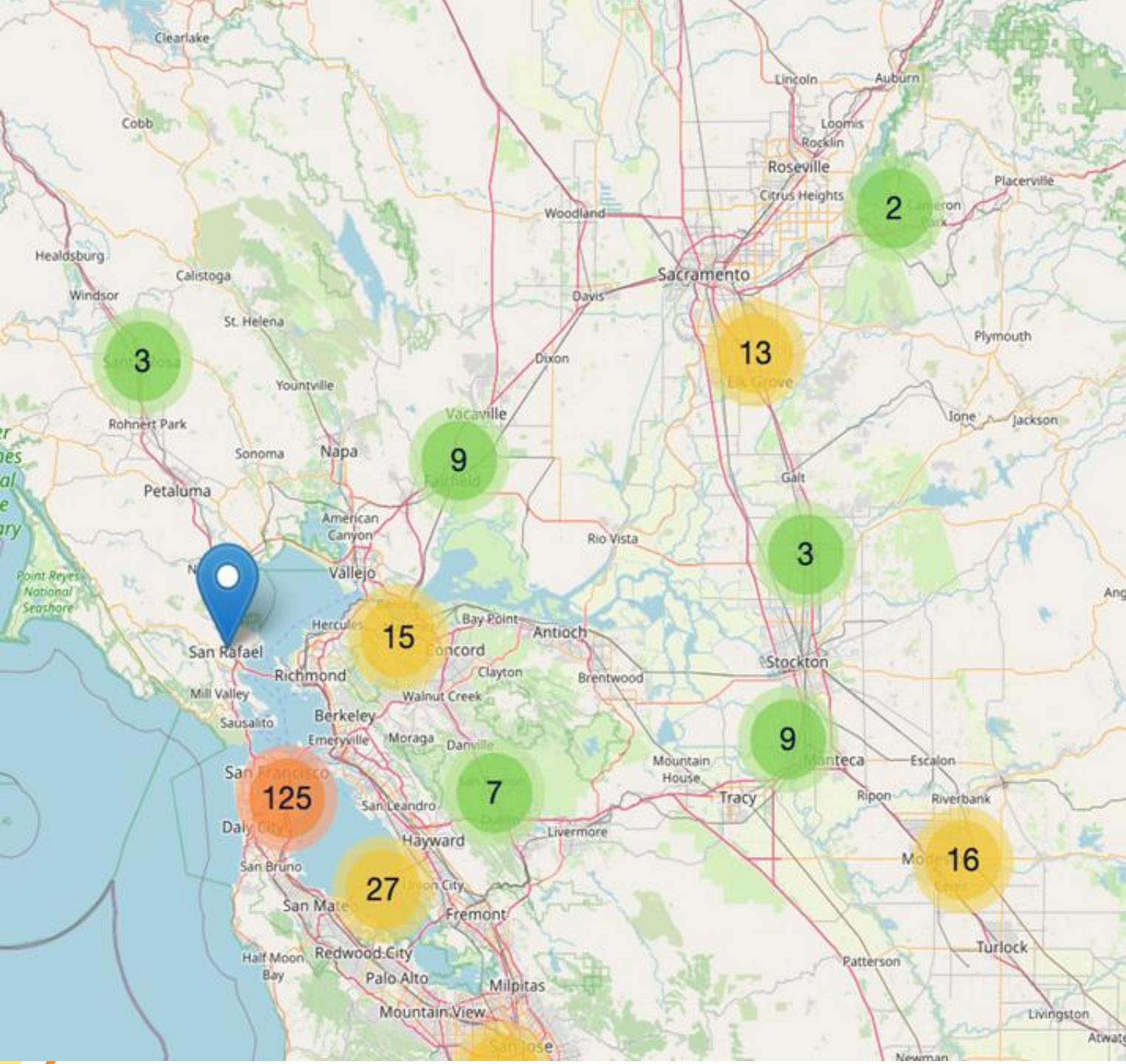


100km  
100 miles



2023-01-06





**text\_no\_comma**

Mudslide near freeway in Chula Vista. Caltrans put sandbags and there are cars still driving near the edge. A homeless person livestreamed and people called it in but road remains open. #rain #CaliforniaStorms <https://t.co/yF7vUJtQ0m>

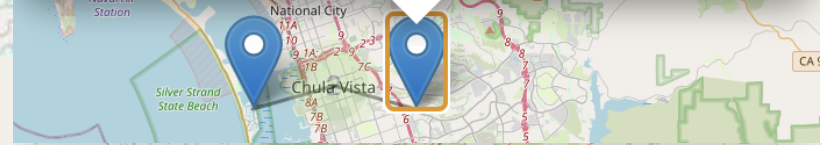
**media**

**url**

**impacts**

0.9736847878

**country\_name**



**text\_no\_comma**

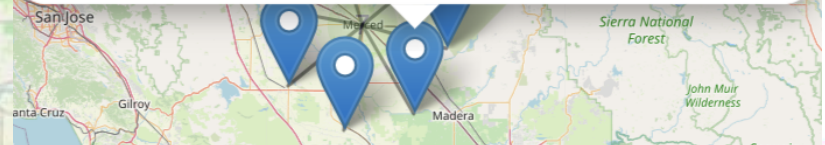
The entire community of Planada a town of about 4 000 people just east of Merced was evacuated Tuesday morning amid rising waters from a breached levee. The flood came after a series of storms made their way through California. <https://t.co/lsAU7Smm11>

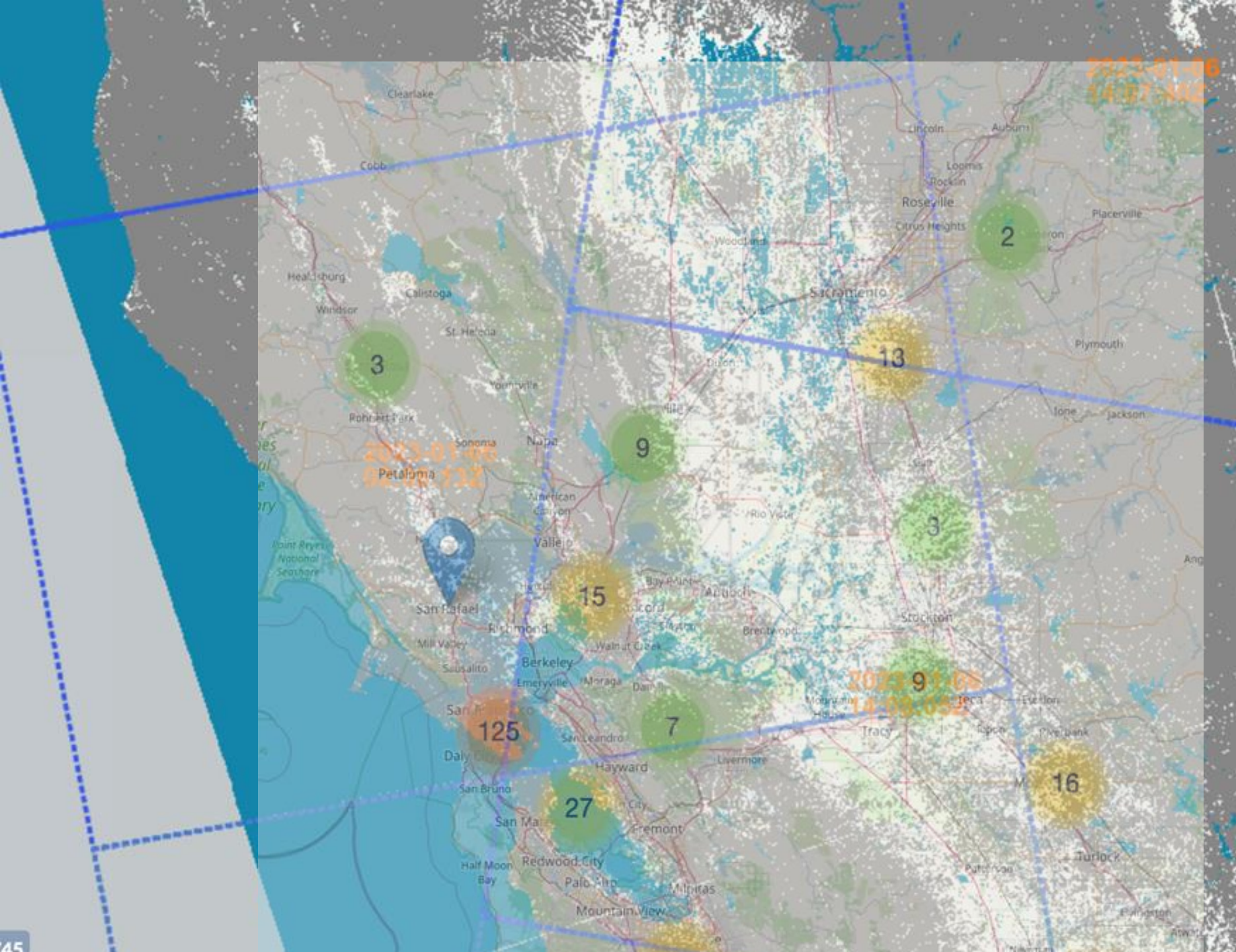
**media**

**url**

**impacts**

0.9694343209





10366	10366	9442	Sat Jan 07 04:24:12 +0000 2023	en	City of Bakersfield crews clear dozens of trees <b>damaged</b> during storm <a href="https://t.co/2jNMwBRO3n">https://t.co/2jNMwBRO3n</a> <a href="https://t.co/B62xXrFPMW">https://t.co/B62xXrFPMW</a>		0.9310304523	United States	California	Kern
10367	10367	9443	Sat Jan 07 07:08:22 +0000 2023	en	City of Bakersfield crews clear dozens of trees <b>damaged</b> during storm <a href="https://t.co/2jNMwBRO3n">https://t.co/2jNMwBRO3n</a> <a href="https://t.co/B62xXrFPMW">https://t.co/B62xXrFPMW</a>		0.9310304523	United States	California	Kern
12356	12356	11380	Fri Jan 20 00:27:53 +0000 2023	en	Coyote Hills in Fremont is closed due to flooding. One of several East Bay Regional Parks closed because of storm <b>damage #cawx</b> <a href="https://t.co/1tGhgBgh5L">https://t.co/1tGhgBgh5L</a>		0.9908969998	United States	California	Alameda
12913	12913	11925	Fri Jan 06 03:46:41 +0000 2023	en	<sup>2</sup> Watsonville where flooding was especially catastrophic. The county says the storm caused at least \$10 million in <b>damages</b> to roads and infrastructure. Authorities have reported at least two weather-related deaths from the latest storm this week.		0.9984995127	United States	California	Santa Cruz

The platform's **SMDRM** aim is to intelligently process the vast amount of information generated by a crowd and provide actionable insights to crisis responders in real-time.

Using **crowdsourced information** in the disaster management requires validating the information, and it's important to have **Practitioners** to verify the information and to make sure that it's accurate, reliable, and fit-for-purpose for their needs.

# STAY CONNECTED

EVENTS, ONLINE, and MAP VIEWERS



@CopernicusEMS



emergency.copernicus.eu



activations.emergency.copernicus.eu



Rapid Mapping



Risk & Recovery Mapping



Floods



Fires



Droughts



Population



Built-up areas



PROGRAMME OF THE  
EUROPEAN UNION