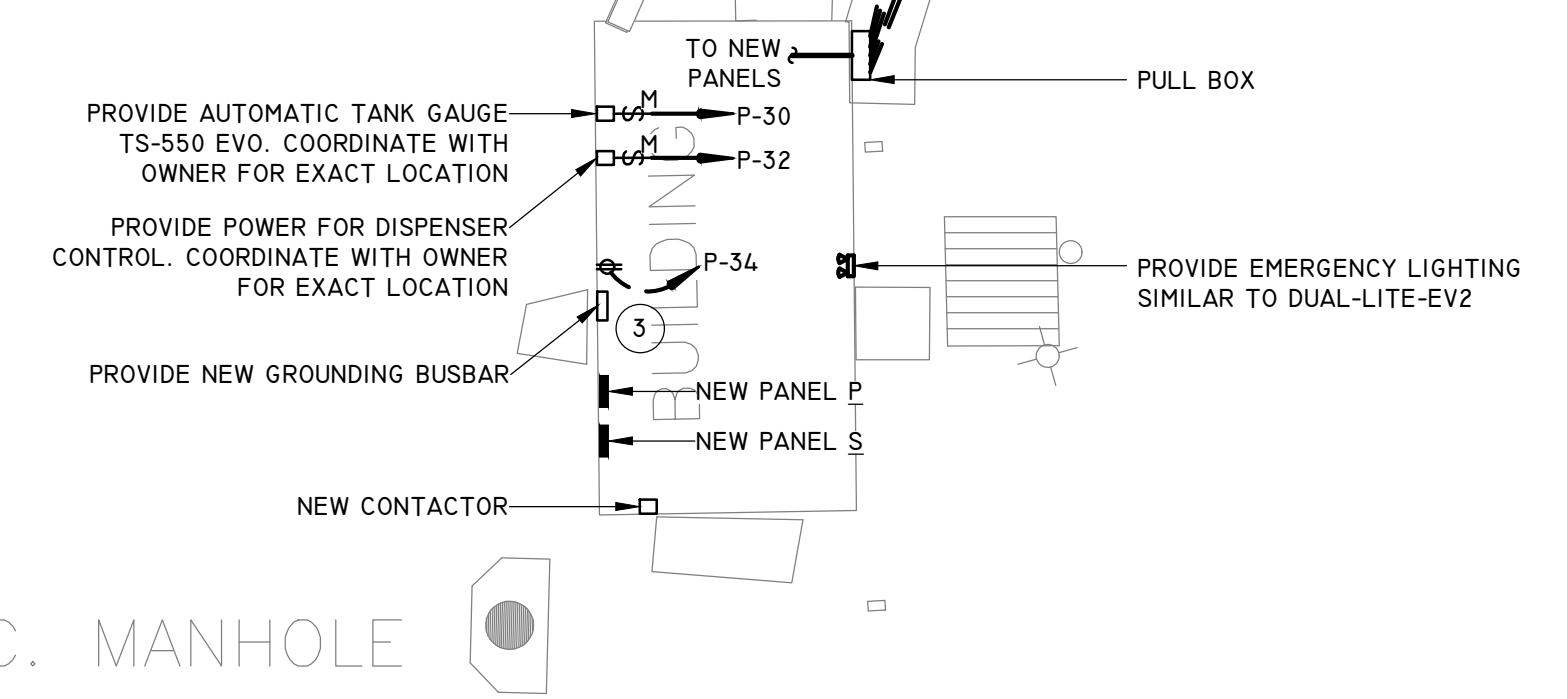


(E) ELEC. MANHOLE

(E) ELEC. MANHOLE



**GENERAL NOTES:**

1. ALL ABOVE GROUND DEVICES/ EQUIPMENT SHALL BE  $\geq$  36" AND 500 YEAR FLOOD ELEVATION.

**ELECTRICAL KEYED NOTES:**

- ① PROVIDE (1) 1" IC FOR FUEL VENT, HYDROSTATICS MONITOR, AND SUMP PUMP SENSOR CABLES, AND OVERFILL ALARMS.
- ② PROVIDE TWO EXPLOSION-PROOF SWITCHES FOR EACH FUEL DISPENSER ON EACH ISLAND. MOUNTED ON THE MODIFIED NOZZLE STAND, ONE FOR DIESEL HOSE AND ONE FOR GASOLINE HOSE / PROVIDE A 1" IC DATA CABLE FOR FUEL FORCE. REFER TO DETAIL 7/E7.
- ③ PROVIDE A NEW RECEPTACLE AND GROUNDING BUS BAR FOR IT. COORDINATE WITH OWNER FOR EXACT LOCATION PRIOR TO INSTALLATION.
- ④ COORDINATE EXACT LOCATION OF EPO BUTTON WITH OWNER PRIOR TO INSTALLATION.

 10205 WESTHEIMER ROAD SUITE 800 HOUSTON, TEXAS 77042 713 - 953 - 4800	 INFRASTRUCTURE ASSOCIATES, INC. 6117 RICHMOND AVENUE, SUITE 200 HOUSTON, TEXAS 77057 TBPE REGISTRATION NO. F-4506 (713) 622-0120 PH (713) 622-0557 FAX WWW.IAHOUSTON.COM
FB # 533	

REVIEW FOR SCOPE OF CONTENT GENERAL SERVICES DEPARTMENT  _____ PROGRAM PROJECT MANAGER			
REV. NO.	DESCRIPTION	APP'D	DATE
1	ISSUED FOR PERMIT		06-11-2021
2	CITY COMMENTS		08-13-2021
2	REV 1		04-13-2022

**CITY OF HOUSTON**  
 GENERAL SERVICES AND DEPARTMENTS OF PUBLIC WORKS

CITY OF HOUSTON  
 REMEDIATION AND UST SYSTEM MAINTAINANCE  
 7101 RENWICK DR, SUITE# CNPY  
 HOUSTON TX 77081

**ELECTRICAL PLAN**

FILE NO.	
DRAWING SCALE:	AS SHOWN
CITY OF HOUSTON PM	
GABRIEL MUSSIO	
SHEET NO.	E5



01 ELECTRICAL PLAN

SCALE: 1" = 10'-0"

SEAL:

CADD DWG FILE NO: