



## Understanding DNR Roving Crews & Funding

LSOHC Presentation, January 29, 2020

Bob Welsh | Wildlife Operations Manager  
Jason Ekstein | Roving Habitat Crew Supervisor



[mndnr.gov](http://mndnr.gov)

## Outline

- I. Background
- II. Funding Overview
- III. Geographic Overview
- IV. On the Ground
- V. Efficiencies
- VI. Funding Innovation



## I. Background

### History

- First crew in 2011
- Learning curve – adjusted staffing over time, expanded geographically
- Learned that main needs are for equipment, personnel, facility space, etc. – have essentially perfected the model

### What is a crew? What do they do?

- 6-8 person crew exclusively on habitat work, able to avoid area wildlife office issues
- Prairie/wetland work at 75/25 split
- Highly efficient and well trained crews, great supervisors leading the charge
- Best thing invented for habitat management since the drip torch

3

## II. Funding Overview

Crew	FY11	FY12	FY13	FY14	FY15	FY16	FY17	FY18	FY19	FY20	FY21	FY22	FY23
NW	Prairie												
SW		Prairie											
NW			Prairie & Wetland										
SE			Prairie										
SW			Wetland										
SW				Prairie									
SW						Prairie							
SE						Wetland							
SW							Wetland						
SE							Prairie						
NW							Prairie & Wetland						
SE								Prairie & Wetland					
SW								Prairie & Wetland					
NW										Prairie & Wetland			
WC										Prairie			
NE											Forest		
SE											Prairie & Wetland		

## III. Geographic Overview

### Location/boundaries

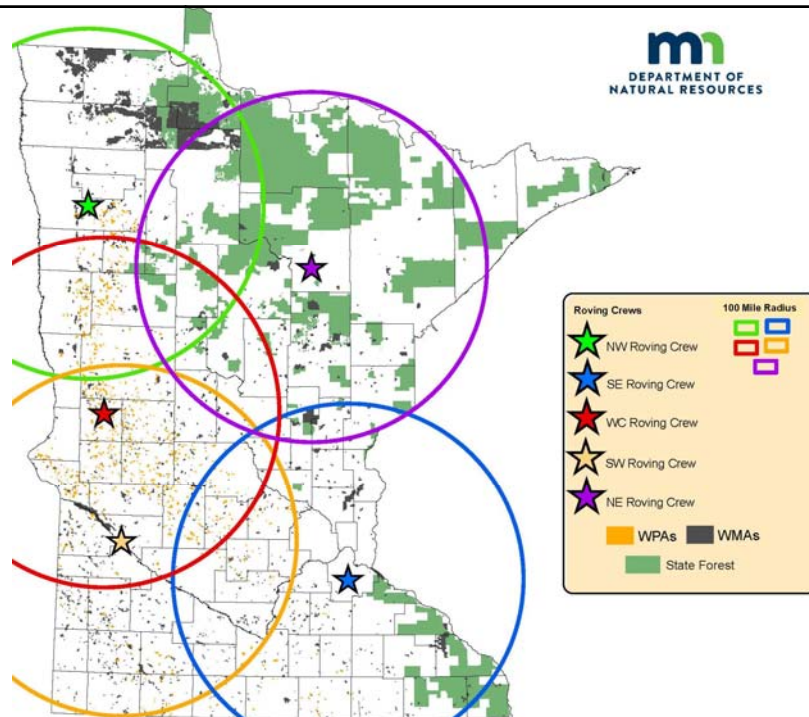
- Established crews in prairie & prairie/forest transition areas
  - First crews established to focus on Prairie Conservation Plan
- Focus within 75-100 miles of office complex, but no hard bounds, not constrained by area office boundaries
- New NE crew developed to address forest/lowland brush needs – will function a little differently

### Work planning

- Solicit projects from area staff or identify needs
- Each crew serves suite of area offices, may have liaison
- High degrees of communication, coordination, collaboration

5

## Roving Crew Boundaries



# IV. On the Ground





Wetland Enhancement



Woody Removal



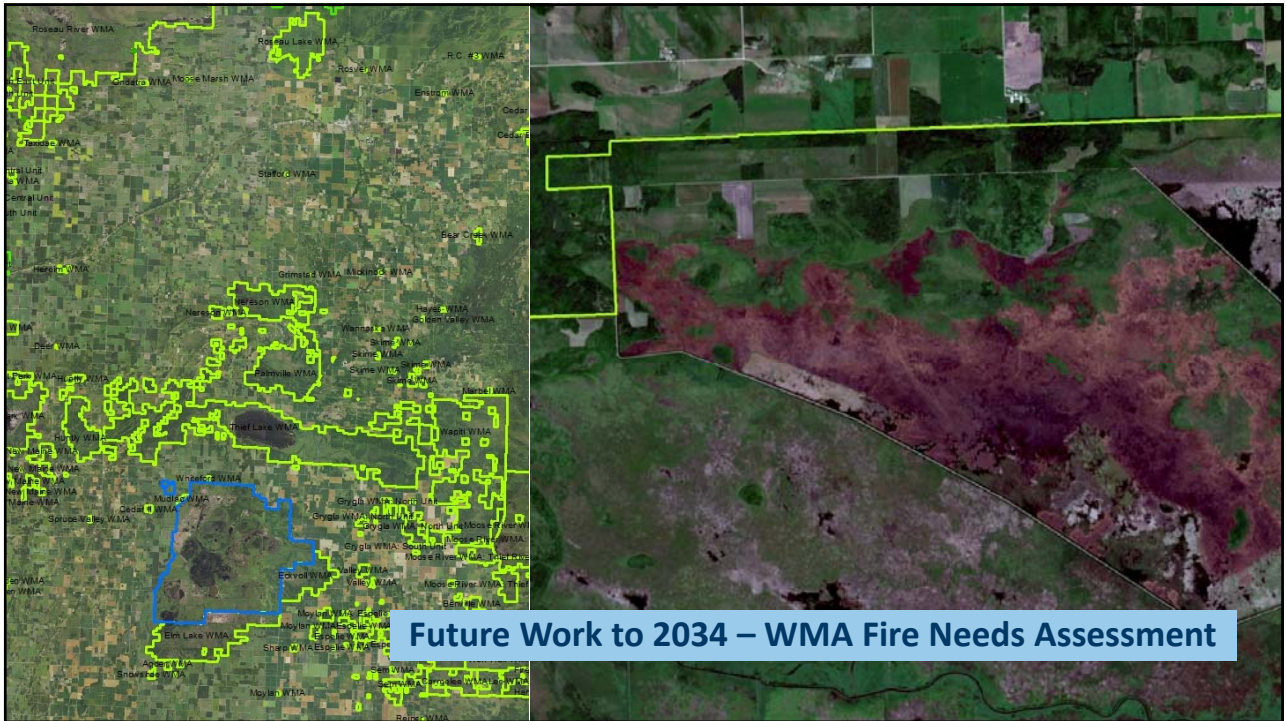
Prairie Restoration/Enhancement



State Wildlife Management Area  
open to public hunting  
Missouri Department of Natural Resources



Prescription Burning



## V. Efficiencies

### Efficiencies to-date

- Staffing model adjustments
- Equipment needs
- Communication/coordination
- Property type
- Work schedules/orders; technology
- Training

15

## VI. Funding Innovation

### Benefits

- Upfront costs and logistics are significant
- The more simplified and stable the funding, the better:
  - Staff recruitment and retention – keep talent on soft money
  - Flexible funding – across categories, land types

### Coordinated request

- 8 person crew = ~\$800,000/year
- 1 crew for 3 years = \$2.4M
- Full 4.5 crew complement for 1 year = \$3.6M
- Full 4.5 crew complement for 5 years = \$18M
- Full 4.5 crew complement for 15 years = \$54M

16





# Thank You!

**Bob Welsh**

*Bob.Welsh@state.mn.us*

651-259-5169