

1 **Interim Analysis of Risk Factors for Severe Outcomes among a Cohort of Hospitalized Adults Identified**
2 **through the U.S. Coronavirus Disease 2019 (COVID-19)-Associated Hospitalization Surveillance**
3 **Network (COVID-NET)**

4
5 Kim L^{1,2*}, Garg S^{1,2,*}, O'Halloran A¹, Whitaker M^{1,3}, Pham H¹, Anderson EJ^{4,5,6}, Armistead I⁷, Bennett NM⁸,
6 Billing L⁹, Como-Sabetti K¹⁰, Hill M¹¹, Kim S¹², Monroe ML¹³, Muse A¹⁴, Reingold A¹⁵, Schaffner W¹⁶,
7 Sutton M¹⁷, Talbot HK¹⁶, Torres SM¹⁸, Yousey-Hindes K¹⁹, Holstein R^{1,20}, Cummings C^{1,21}, Brammer L¹, Hall
8 A¹, Fry A¹, Langley GE¹.

9
10 Affiliations:

11 ¹CDC COVID-NET Team, Atlanta, GA

12 ²US Public Health Service, Rockville, MD

13 ³Eagle Global Scientific, Atlanta, GA

14 ⁴Departments of Medicine and Pediatrics, Emory University School of Medicine, Atlanta, GA

15 ⁵Emerging Infections Program, Georgia Department of Health, Atlanta, GA

16 ⁶Veterans Affairs Medical Center, Atlanta, GA

17 ⁷University of Colorado Anschutz Medical Campus, Aurora, CO

18 ⁸University of Rochester School of Medicine and Dentistry, Rochester, NY

19 ⁹Ohio Department of Health, Columbus, OH

20 ¹⁰Minnesota Department of Health, St. Paul, MN

21 ¹¹Salt Lake County Health Department, Salt Lake City, UT

22 ¹²Michigan Department of Health and Human Services, Lansing, MI

23 ¹³Maryland Department of Health, Baltimore, MD

24 ¹⁴New York State Department of Health, Albany, NY

25 ¹⁵University of California Berkeley, Berkeley, CA

26 ¹⁶Vanderbilt University School of Medicine, Nashville, TN

27 ¹⁷Oregon Health Authority, Portland, OR

28 ¹⁸New Mexico Department of Health, Santa Fe, NM

29 ¹⁹Connecticut Emerging Infections Program, Yale School of Public Health, New Haven, CT

30 ²⁰Oak Ridge Institute for Science and Education, Oak Ridge, TN

31 ²¹Chickasaw Nation Industries, Norman, OK

32

33

34 *These authors contributed equally to this work.

35

36 Corresponding author: Lindsay Kim, 1600 Clifton Road, MS H24-5, Atlanta, GA 30329, 404-639-5218,

37 LKim@cdc.gov; Shikha Garg, 1600 Clifton Road, MS H24-7, Atlanta, GA 30329, 404-639-6142,

38 izj7@cdc.gov

39

40 Disclaimer: The conclusions, findings, and opinions expressed by the authors do not necessarily reflect
41 the official position of the United States Department of Health and Human Services, the Public Health
42 Service, the CDC, or the authors' affiliated institutions.

43

44 Running title: Severe outcomes among hospitalized COVID-19 adults

45

46 Word Count: 3492/3500

47

48 **ABSTRACT**

49 **Background:** As of May 15, 2020, the United States has reported the greatest number of coronavirus
50 disease 2019 (COVID-19) cases and deaths globally.

51 **Objective:** To describe risk factors for severe outcomes among adults hospitalized with COVID-19.

52 **Design:** Cohort study of patients identified through the Coronavirus Disease 2019-Associated
53 Hospitalization Surveillance Network.

54 **Setting:** 154 acute care hospitals in 74 counties in 13 states.

55 **Patients:** 2491 patients hospitalized with laboratory-confirmed COVID-19 during March 1–May 2, 2020.

56 **Measurements:** Age, sex, race/ethnicity, and underlying medical conditions.

57 **Results:** Ninety-two percent of patients had ≥ 1 underlying condition; 32% required intensive care unit

58 (ICU) admission; 19% invasive mechanical ventilation; 15% vasopressors; and 17% died during

59 hospitalization. Independent factors associated with ICU admission included ages 50-64, 65-74, 75-84

60 and ≥ 85 years versus 18-39 years (adjusted risk ratio (aRR) 1.53, 1.65, 1.84 and 1.43, respectively); male

61 sex (aRR 1.34); obesity (aRR 1.31); immunosuppression (aRR 1.29); and diabetes (aRR 1.13).

62 Independent factors associated with in-hospital mortality included ages 50-64, 65-74, 75-84 and ≥ 85

63 years versus 18-39 years (aRR 3.11, 5.77, 7.67 and 10.98, respectively); male sex (aRR 1.30);

64 immunosuppression (aRR 1.39); renal disease (aRR 1.33); chronic lung disease (aRR 1.31); cardiovascular

65 disease (aRR 1.28); neurologic disorders (aRR 1.25); and diabetes (aRR 1.19). Race/ethnicity was not

66 associated with either ICU admission or death.

67 **Limitation:** Data were limited to patients who were discharged or died in-hospital and had complete

68 chart abstractions; patients who were still hospitalized or did not have accessible medical records were

69 excluded.

70 **Conclusion:** In-hospital mortality for COVID-19 increased markedly with increasing age. These data help
71 to characterize persons at highest risk for severe COVID-19-associated outcomes and define target
72 groups for prevention and treatment strategies.

73

74 **Funding Source:** This work was supported by grant CK17-1701 from the Centers of Disease Control and
75 Prevention through an Emerging Infections Program cooperative agreement and by Cooperative
76 Agreement Number NU38OT000297-02-00 awarded to the Council of State and Territorial
77 Epidemiologists from the Centers for Disease Control and Prevention.

78

79 **Introduction**

80 In December 2019, an outbreak of a novel coronavirus disease, termed coronavirus disease-
81 2019 (COVID-19), was reported in China caused by a newly identified coronavirus, severe acute
82 respiratory syndrome coronavirus-2 (SARS-CoV-2). Since then, approximately 4.5 million cases of
83 COVID-19 have been reported globally (1). As of May 15, approximately 1.4 million cases, including
84 nearly 86,000 deaths, have been reported in the United States, and case counts continue to rise (1) with
85 evidence of widespread community transmission (2).

86 Previous reports from China, Italy, and New York City have demonstrated that hospitalized
87 patients are generally older and have underlying medical conditions, such as hypertension and diabetes
88 (3-5). These studies have also found that older patients and those with certain underlying medical
89 conditions like diabetes were at higher risk for severe outcomes (3, 6, 7). Among cases reported to the
90 U.S. Centers for Disease Control and Prevention (CDC) from local and state health departments, the
91 prevalence of underlying medical conditions increased as severity of infections increased (8, 9), although
92 findings were limited by missing or incomplete information. Questions remain about the independent
93 association of sex, race/ethnicity and specific underlying conditions with severe outcomes among
94 persons hospitalized with COVID-19, after adjusting for age and other important potential confounders.

95 Comprehensive data on U.S. patients with severe COVID-19 infections are needed to better
96 inform clinicians' understanding of groups at risk for poor outcomes and to inform current prevention
97 efforts and future interventions. We rapidly implemented population-based surveillance for laboratory-
98 confirmed COVID-19-associated hospitalizations, collecting clinical data from hospitalized patients in 154
99 hospitals in 13 states since March 1, 2020. In this interim analysis restricted to patients who were
100 discharged or died in-hospital and had completed medical chart abstractions, we describe the
101 characteristics of U.S. adults hospitalized with COVID-19 and assess risk factors for intensive care unit
102 (ICU) admission and in-hospital mortality.

103

104 **METHODS**

105 ***Surveillance Overview***

106 The Coronavirus Disease 2019-Associated Hospitalization Surveillance Network (COVID-NET) has
107 been previously described (10). Eligible COVID-19-associated hospitalizations occurred among persons
108 who (1) resided in a pre-defined surveillance catchment area; and (2) had a positive SARS-CoV-2 test
109 within 14 days prior to or during hospitalization. Hospitalization was defined as admission to an
110 inpatient ward for any length of time, an observation unit stay for ≥ 24 hours, or a combined stay in an
111 emergency department and observation unit for ≥ 24 hours.

112 COVID-NET surveillance occurs in acute care hospitals within 99 counties located in 14 states
113 (California, Colorado, Connecticut, Georgia, Iowa, Maryland, Michigan, Minnesota, New Mexico, New
114 York, Ohio, Oregon, Tennessee, and Utah), covering a catchment population of approximately 32 million
115 persons (~10% of the U.S. population). Although COVID-NET includes all age groups, for this analysis, we
116 excluded children <18 years of age due to small counts (n=101) and one surveillance site (Iowa) for
117 which medical chart abstractions were not conducted on identified cases. We also excluded patients
118 who were still hospitalized at the time of this analysis and all patients for whom medical chart
119 abstractions had not yet been completed. Because the COVID-19 pandemic limited the ability of
120 surveillance officers to access medical records at facilities, patients were more likely to be included in
121 this analysis if they were hospitalized at facilities that provided surveillance officers remote chart access,
122 participated in Health Information Exchanges, or were able to mail or fax records. COVID-NET
123 surveillance was initiated for cases with hospital admission on or after March 1, 2020.

124 Laboratory-confirmed COVID-19-associated hospitalizations were identified using laboratory
125 and reportable condition databases, hospital infection control databases, electronic medical records,

126 and/or review of hospital discharge records. Laboratory tests were ordered at the discretion of the
127 treating healthcare provider.

128 Medical chart reviews for demographic and clinical data were conducted by trained surveillance
129 officers using a standard case report form. Underlying medical conditions were categorized into major
130 groups (Appendix Table 1). Obesity and severe obesity were defined as a calculated body mass index
131 (BMI) ≥ 30 kg/m² and BMI ≥ 40 kg/m², respectively. Chest radiograph results were obtained from the
132 radiology reports and not from review of the original radiograph. We defined severe outcomes as either
133 ICU admission or in-hospital mortality. We hypothesized that increasing age and underlying medical
134 conditions would be associated with an increased risk of ICU admission and in-hospital mortality.

135

136 ***Statistical Analysis***

137 After the exclusions noted above, we included adults hospitalized within 154 acute care
138 hospitals in 74 counties in 13 states with an admission date during March 1–May 2, 2020 who had either
139 been discharged from the hospital or died during hospitalization and had complete medical chart
140 abstractions. We calculated proportions using the number of patients with data available on each
141 characteristic as the denominator.

142 To construct multivariable models for ICU admission and in-hospital mortality, we first assessed
143 collinearity among underlying medical condition categories and outpatient use of ACE-inhibitors and
144 ARBs. We examined the association of demographic factors, underlying medical conditions, and
145 outpatient use of ACE-inhibitors and ARBs with ICU admission and in-hospital death using chi square
146 tests. Variables considered for inclusion in the final models included current or former smoker,
147 hypertension, obesity, diabetes, chronic lung disease (CLD), cardiovascular disease (CVD) (excluding
148 hypertension), neurologic disorders, renal disease, immunosuppression, gastrointestinal/liver disease,
149 hematologic conditions, rheumatologic/autoimmune conditions, and outpatient use of ACE-inhibitors or

150 ARBs. All multivariable models included age categorized into the following groups (18–39, 40–49, 50–
151 64, 65–74, 75–84, and ≥85 years), sex, and race/ethnicity. Other variables with p-values <0.10 in
152 bivariate analyses were included in the multivariable analyses. Log-linked Poisson generalized
153 estimating equations regression with an exchangeable correlation matrix (11, 12), clustered by site, was
154 used to generate adjusted risk ratios (aRR), 95% confidence intervals (CI), and two-sided p-values for the
155 risk of ICU admission and in-hospital death. We also constructed separate multivariable models to
156 examine the association between the number of underlying medical conditions and ICU admission or in-
157 hospital death. Two-sided p-values <0.05 were considered statistically significant. All analyses were
158 performed using the SAS 9.4 software (SAS Institute Inc., Cary, NC, USA).

159 These data were collected as part of routine public health surveillance and determined to be
160 non-research by CDC. Participating sites obtained approval for the COVID-NET surveillance protocol
161 from their respective state and local IRBs, as required.

162

163 ***Role of the Funding Source***

164 This work was supported by grant CK17-1701 from the CDC through an Emerging Infections
165 Program cooperative agreement and by cooperative agreement NU38OT000297-02-00 awarded to the
166 Council of State and Territorial Epidemiologists from the CDC.

167

168 **RESULTS**

169 A total of 16,318 hospitalized COVID-19 patients were reported to COVID-NET with an admission
170 date during March 1–May 2, 2020. After excluding 101 pediatric patients, 74 patients from Iowa where
171 detailed medical chart abstractions are not conducted, and 13,652 patients who were either still
172 hospitalized or did not yet have completed medical chart abstractions, 2,491 (15%) COVID-19-associated
173 hospitalized adults from 13 surveillance sites were included in this analysis (Figure 1). Patients came

174 from 43% (154/357) of the acute care hospitals included in COVID-NET surveillance across the 13
175 surveillance sites (Appendix Table 2). The percentage of facilities contributing data out of the total
176 number of facilities by site ranged from 19% to 100%. The median age of included and excluded
177 patients (62 vs. 63 years, respectively) was similar (Appendix Table 3). The highest proportion of
178 patients included in this analysis were from Minnesota (20%), Tennessee (20%), New York (12%), and
179 Maryland (10%), and Connecticut (9%) (Appendix Table 3).

180

181 **Characteristics of hospitalized patients with COVID-19**

182 Among the 2,491 hospitalized adults, median age was 62 years (interquartile range (IQR), 50–
183 75), and almost 75% were ≥ 50 years (Table 1). Forty-seven percent of patients (n=1178/2490) were
184 non-Hispanic whites, 30% non-Hispanic blacks (n=755/2490), and 12% Hispanics (n=306/2490). Nearly
185 one-third of patients were current or former smokers.

186 Almost all patients (n=2278/2489, 92%) had ≥ 1 underlying medical condition, with hypertension
187 (n=1428/2488, 57%), obesity (n=1154/2332, 50%), and chronic metabolic disease (n=1024/2486,
188 41%) most frequently documented. Among patients with chronic metabolic disease, 80% (n=819/1024)
189 had diabetes mellitus; hypertension alone was documented in only 4% (n=91/2490) of patients.
190 Seventeen percent (n=316/1892) took ACE-inhibitors, and 14% (n=257/1895) took ARBs prior to
191 hospitalization. The proportion of patients with any documented underlying medical condition
192 increased with age (p<0.05)(Figure 2A). Prevalence of CLD, neurologic conditions, obesity, and renal
193 disease varied between males and females (p<0.05, Figure 2B). CVD, CLD, and neurologic conditions
194 were more prevalent among non-Hispanic whites, while diabetes, hypertension, obesity and renal
195 disease were more common among non-Hispanic blacks (p<0.05, Figure 2C).

196 Cough (75%), fever or chills (74%), and shortness of breath (70%) were commonly
197 documented symptoms at admission (Table 2 and Appendix Table 4). Gastrointestinal symptoms,

198 including nausea, vomiting, and diarrhea, were documented in almost 30% of patients. Median length
199 of hospitalization was 6 days (IQR, 3–11), and median days from symptom onset to hospital admission
200 was 6 days (IQR, 3–8). Median values of initial vital signs were within normal range, except for elevated
201 blood pressure (Table 2). Thirty-three individuals had a pathogen detected from positive blood cultures
202 (Appendix Table 5). Viral co-detections from respiratory specimens were rare among those who were
203 tested (n=38/1549, 2.5%) (Appendix Table 6). Among 1932 patients with chest radiograph
204 performed, 92% (n=1769) were documented as abnormal with infiltrate or consolidation (n=1574/1932,
205 81%) documented most frequently (Appendix Table 7). Ninety-five percent (n=540/566) of patients with
206 chest computerized tomography (CT) had abnormal findings, and ground glass opacity
207 was documented in 62% (n=350/566) (Appendix Table 7).

208 Forty-five percent (n=1125/2482) of patients received investigational medication regimens for
209 COVID-19 during hospitalization (Table 2). The most common regimens included hydroxychloroquine
210 (n=1065/2479, 43%) and the combination of azithromycin and ≥ 1 COVID-19 treatment (n=725/2479,
211 29%) (non-mutually exclusive categories). The most frequent discharge diagnoses recorded in hospital
212 discharge summaries were pneumonia (n=1395/2485, 56%), acute respiratory failure (n=999/2487,
213 40%), acute renal failure (n=456/2,485, 18%), and sepsis (n=443/2,479, 18%).

214 Thirty-two percent (n=798/2490) of patients required ICU admission, with a median length of
215 ICU stay of 6 days (range, 1-41; IQR, 2–11) (Table 2). Median days from symptom onset to ICU
216 admission was 7 days (range, 0–25; IQR, 4–10), and median days from hospital admission to ICU
217 admission was 1 day (range, 0–19; IQR, 0–2). Among 2,489 hospitalized patients, the highest respiratory
218 support received was invasive mechanical ventilation in 19% (n=462), bilevel positive airway pressure
219 (BIPAP) or continuous positive airway pressure (CPAP) in 3% (n=82), and high flow nasal cannula (HFNC)
220 in 7% (n=170). Fifty-three percent (n=246/462) of patients that received invasive mechanical ventilation
221 died in-hospital (median age, 71 years; IQR, 62–79); the proportion of patients receiving mechanical

222 ventilation who died increased with age ($p < 0.0001$). Vasopressors were used in 15% ($n = 373/2486$) of
223 patients, while renal replacement therapy was used in 5% ($n = 115/2487$). As age increased, so did
224 the proportion of patients who required ICU admission, invasive mechanical ventilation, and
225 vasopressors ($p < 0.05$, Figure 3A). Males were admitted to the ICU and treated with invasive mechanical
226 ventilation, HFNC, or vasopressors more frequently than females ($p < 0.05$) (Figure 3B). Non-Hispanic
227 whites more frequently received BIPAP, CPAP or HFNC ($p < 0.05$, Figure 3C).

228 Overall, seventeen percent ($n = 420/2490$) of patients died during hospitalization (Table 2). The
229 proportion of patients who died increased with increasing age groups, ranging from 3% among 18–49
230 years to 10% among 50–64 years to 29% among ≥ 65 years (Figure 3A). Males died more frequently
231 compared to females ($p < 0.05$) (Figure 3B), as did non-Hispanic whites compared to other
232 race/ethnicities ($p < 0.05$, Figure 3C).

233 Among 420 patients who died, median age was 76 years (range, 24–97; IQR, 66–85); 58%
234 ($n = 244$) were male; 71% ($n = 299$) were admitted to the ICU; and 59% ($n = 246$) received invasive
235 mechanical ventilation. The median length of hospitalization among patients who died was 7 days
236 (range, 0–40; IQR, 4–12).

237

238 **Risk factors for ICU admission and death**

239 Factors independently associated with ICU admission included age 50–64 years (adjusted risk
240 ratio (aRR) = 1.53; 95% confidence interval (CI), 1.28 to 1.83); 65–74 years (aRR = 1.65; CI, 1.34 to 2.03);
241 75–84 years (aRR = 1.84; CI, 1.60 to 2.11); ≥ 85 years (aRR = 1.43; CI, 1.00 to 2.04); male sex (aRR = 1.34;
242 CI, 1.20 to 1.50); obesity (aRR = 1.31; CI, 1.16 to 1.47); diabetes (aRR = 1.13; CI, 1.03 to 1.24); and
243 immunosuppression (aRR = 1.29; CI, 1.13 to 1.47) (Table 3A).

244 Independent factors associated with in-hospital mortality included age 50–64 years (aRR = 3.11;
245 CI 1.50 to 6.46); age 65–74 years (aRR = 5.77; CI, 2.64 to 12.64); age 75–84 years (aRR = 7.67; CI, 3.35 to

246 17.59); age ≥ 85 years (aRR = 10.98; CI, 5.09 to 23.69); male sex (aRR = 1.30; CI, 1.14 to 1.49); diabetes
247 (aRR = 1.19; CI, 1.01 to 1.40); CLD (aRR = 1.31; CI, 1.13 to 1.52); CVD (aRR = 1.28; CI, 1.03 to 1.58);
248 neurologic disorders (aRR = 1.25; CI, 1.04 to 1.50); renal disease (aRR = 1.33; CI, 1.10 to 1.61); and
249 immunosuppression (aRR = 1.39; CI, 1.13 to 1.70) (Table 3B).

250 Having ≥ 3 underlying medical conditions was significantly associated with higher risk of
251 ICU admission and death after adjusting for age group, sex, and race/ethnicity (Appendix Table 8).

252

253 **DISCUSSION**

254 Using a geographically diverse, multi-site, population-based U.S. surveillance system, we found
255 that among adults hospitalized with laboratory-confirmed COVID-19, almost one-third required ICU
256 admission, 19% received invasive mechanical ventilation, and 17% died during hospitalization. About
257 75% of patients were ≥ 50 years, and $>90\%$ had underlying medical conditions. Older age, being male,
258 and the presence of certain underlying medical conditions were associated with a higher risk of ICU
259 admission and in-hospital mortality. Race/ethnicity was not independently associated with either
260 outcome among hospitalized patients. This information can alert healthcare providers to patients at
261 greatest risk of severe outcomes and help target prevention strategies and future interventions.

262 In a published COVID-NET analysis, we found that when comparing the racial/ethnic distribution
263 of residents of the surveillance catchment areas to the racial/ethnic distribution of COVID-19-associated
264 hospitalizations, non-Hispanic blacks were disproportionately hospitalized with COVID-19 compared to
265 non-Hispanic whites (10). In this analysis, however, we found that once hospitalized, non-Hispanic
266 blacks did not have increased risk of poorer outcomes compared to other race/ethnicities after adjusting
267 for age and underlying conditions. In a preprinted article of U.S. Veterans seeking care at VA Hospitals,
268 Rentsch et al. found no association between black race and ICU admission (13). Similarly, a large study

269 of patients hospitalized in New York City did not find race/ethnicity to be associated with ICU admission
270 or death (4).

271 COVID-19-associated hospitalizations, ICU admissions, and deaths have been shown to occur
272 more frequently with increasing age (6, 9, 14). In our study, age ≥ 65 years was the strongest
273 independent predictor of ICU admission and in-hospital mortality. Persons aged 75–84 years had the
274 highest the risk of ICU admission compared to 18-49 years old, and those ≥ 85 years experienced 11
275 times the risk of death. These findings are similar to other studies from China, Europe, and the United
276 States (4, 9, 14-17). Our data provide support that older persons are particularly vulnerable to severe
277 COVID-19 disease and should be targeted for aggressive preventive measures (8).

278 Being male was associated with a higher risk of ICU admission and death after adjusting for age,
279 race/ethnicity and underlying conditions. Other studies have similarly shown male sex to be associated
280 with COVID-19-associated hospitalizations (4, 18), ICU admissions (19), and need for mechanical
281 ventilation (20).

282 Similar to other U.S. studies, we found that nearly all hospitalized patients with COVID-19 had at
283 least one underlying medical condition (4). In contrast, underlying medical conditions were documented
284 in only 25–50% of hospitalized cases from China (3, 21). Our analysis further demonstrated that a higher
285 number of underlying medical conditions increased the risk of ICU admission (1.3 times the risk in
286 persons with ≥ 3 vs. no underlying condition) and in-hospital mortality (1.8 times the risk in persons with
287 ≥ 3 vs. no underlying condition).

288 In a retrospective case study among 1590 laboratory-confirmed hospitalized COVID-19 cases in
289 575 Chinese hospitals, Guan et al. found that after adjusting for age and smoking status, chronic
290 obstructive pulmonary disease, diabetes, hypertension and malignancy were risk factors for a composite
291 endpoint of ICU admission, invasive mechanical ventilation, and death (3). Similarly, we found an
292 association between underlying medical conditions and severe outcomes, with diabetes, CLD, CVD,

293 neurologic disease, renal disease and immunosuppression associated with in-hospital death, and
294 diabetes, obesity, and immunosuppression associated with ICU admission. While hypertension was
295 highly prevalent in our patient population, it was not associated with ICU admission or death. Additional
296 studies are needed to determine whether hypertension, which is also highly prevalent in the U.S.
297 population, increases the risk of COVID-19-associated hospitalizations and whether the duration of
298 hypertension and the degree to which it is controlled impact the risk for severe COVID-19 disease.
299 Similarly, the associations between the duration and degree of glycemic control in diabetes and severity
300 of COVID-19 disease require further investigation. Obesity, which was also highly prevalent in this
301 cohort, imparted increased risk for ICU admission, but not death. This finding may, in part, be explained
302 by a trend of decreasing obesity prevalence with increasing age, which was a strong risk factor for
303 mortality. Healthcare providers should be aware of these findings to appropriately triage and manage
304 patients with high-risk conditions that may either increase risk for hospitalization or poorer outcomes
305 once hospitalized (22, 23).

306 We collected data on initial symptoms, vital signs and laboratory values to characterize disease
307 severity at admission. While approximately 70% of patients had shortness of breath at admission, the
308 median oxygen saturation at admission was 94% on room air. Other admission vital signs and laboratory
309 values were also largely within normal ranges. Because we did not collect data on vital signs or
310 laboratory values during the hospital course, we may not have fully captured the onset of clinical
311 deterioration that has been reported during the second week after illness onset (24). We limited our
312 analysis to patients that had either been discharged or died in-hospital and found that 15% of patients
313 received vasopressor support, and 19% received invasive mechanical ventilation. Other U.S. studies
314 have found that up to 32% of hospitalized patients have received vasopressors and 29–33% have
315 received invasive mechanical ventilation (19, 20), though some of these studies included patients who
316 were still hospitalized at the time of analysis. In our study, 53% of patients requiring mechanical

317 ventilation died, which is higher than the 36% reported in a recent study from New York City (4). In
318 general, the proportion of patients with severe outcomes was higher in the United States than reported
319 from China (6). Differences between patients' outcomes in the United States and China may reflect
320 differences in clinical practices or varying thresholds for hospitalization (18). These proportions of
321 severe outcomes among U.S. patients are also generally higher than those found in U.S. adults
322 hospitalized with seasonal influenza (25, 26). Our findings may help to inform resource planning and
323 allocation in healthcare facilities during the COVID-19 pandemic.

324 There are several limitations to our analysis. First, it is likely that not all COVID-19-associated
325 hospitalizations were captured because of the lack of widespread testing capability during the study
326 period and because identification of COVID-19 patients was largely reliant on clinician-directed testing.
327 Second, clinical practices and availability of specific interventions may differ across hospitals, which
328 might have influenced findings. Third, COVID-NET is an ongoing surveillance system, and only 15% of
329 the 16,318 COVID-19 hospitalized patients were included, representing those who were discharged or
330 died in-hospital during March 1–May 2, 2020 and for whom medical records were available and chart
331 abstractions were completed. These restrictions may have resulted in selection bias. However, there
332 was no difference in the age and sex distribution between cases included and excluded from the
333 analysis. The geographic distribution of cases included versus excluded from this analysis differed,
334 which may have impacted the racial and ethnic distribution of cases included in this analysis as
335 compared to the racial and ethnic distribution of the surveillance catchment population; however, as we
336 do not yet have complete data on race/ethnicity for all identified cases, we were not able to assess this
337 further. Nevertheless, COVID-NET encompasses a large geographic area with multiple hospitals and
338 likely offers a more racially and ethnically diverse patient population compared to other single-center or
339 state-based studies. Lastly, small counts limited our ability to determine risk factors for severe
340 outcomes among all racial and ethnic groups. COVID-NET data will become more robust as additional

341 medical chart reviews are completed and may allow further investigation within these racial and ethnic
342 groups over time.

343 Based on preliminary findings from this multi-site, geographically diverse study, a high
344 proportion of patients hospitalized with COVID-19 received aggressive interventions and had poor
345 outcomes. Increasing age was the strongest predictor of in-hospital mortality. Prevention strategies,
346 such as social distancing and rigorous hand hygiene, are key to minimizing the risk of infection in high-
347 risk patients. These data help to characterize persons at highest risk for severe COVID-19-associated
348 disease in the United States and to define target groups for future prevention and treatment strategies
349 as they become available.

350

351 **ACKNOWLEDGMENTS**

352 Ashley Coates, Pam Daily Kirley, Gretchen Rothrock, California Emerging Infections Program; Nisha
353 Alden, Rachel Herlihy, Breanna Kawasaki, Colorado Department of Public Health and Environment; Paula
354 Clogher, Hazal Kayalioglu, Amber Maslar, Adam Misorski, Danyel Olson, Christina Parisi, Connecticut
355 Emerging Infections Program; Kyle Openo, Emily Fawcett, Jeremiah Williams, Katelyn Lengacher, Georgia
356 Emerging Infections Program; Andrew Weigel, Iowa Department of Health; Brian Bachaus, Timothy
357 Blood, David Blythe, Alicia Brooks, Judie Hyun, Elisabeth Vaeth, Cindy Zerrlaut, Maryland Department of
358 Health; Jim Collins, Kimberly Fox, Sam Hawkins, Justin Henderson, Shannon Johnson, Libby Reeg,
359 Michigan Department of Health and Human Services; Austin Bell, Kayla Bilski, Erica Bye, Emma
360 Contestabile, Richard Danila, Kristen Ehresmann, Hannah Friedlander, Claire Henrichsen, Emily
361 Holodnick, Ruth Lynfield, Katherine Schliess, Samantha Siebman, Kirk Smith, Maureen Sullivan,
362 Minnesota Department of Health; Cory Cline, New Mexico Department of Health; Kathy Angeles, Lisa
363 Butler, Emily Hancock, Sarah Khanlian, Meaghan Novi, Sarah Shrum, New Mexico Emerging Infections
364 Program Albuquerque; Nancy Spina, Grant Barney, Suzanne McGuire, New York State Health

365 Department; Sophrena Bushey, Christina Felsen, Maria Gaitan, Anita Gellert, RaeAnne Kurtz, Christine
366 Long, Shantel Peters, Marissa Tracy, University of Rochester School of Medicine and Dentistry; Laurie
367 Billing, Maya Scullin, Jessica Shiltz, Ohio Department of Health; Nicole West, Oregon Health Authority;
368 Kathy Billings, Katie Dyer, Anise Elie, Karen Leib, Tiffanie Markus, Terri McMinn, Danielle Ndi,
369 Manideepthi Pemmaraju, Vanderbilt University Medical Center; Keegan McCaffrey, Utah Department of
370 Health; Clarissa Aquino, Ryan Chatelain, Andrea George, Jacob Ortega, Andrea Price, Ilene Risk, Melanie
371 Spencer, Ashley Swain, Salt Lake County Health Department; Mimi Huynh, Monica Schroeder, Council of
372 State and Territorial Epidemiologists; Shua J. Chai, Field Services Branch, Division of State and Local
373 Readiness, Center for Preparedness and Response, Centers for Disease Control and Prevention; Sharad
374 Aggarwal, Lanson Broecker, Aaron Curns, Rebecca M. Dahl, Alexandra Ganim, Rainy Henry, Sang Kang,
375 Sonja Nti-Berko, Robert Pinner, Mila Prill, Scott Santibanez, Alvin Shultz, Sheng-Te Tsai, Henry Walke,
376 Venkata Akesh R. Vundi, CDC.

377

378 REFERENCES

- 379 1. Johns Hopkins University & Medicine 2020;Pages<https://coronavirus.jhu.edu/map.html> on
380 5/15/2020.
- 381 2. Centers for Disease Control & Prevention 2020;Pages<https://www.cdc.gov/coronavirus/2019-ncov/covid-data/covidview/index.html#outpatient> on 5/15/20220 2020.
- 382
- 383 3. Guan WJ, Liang WH, Zhao Y, Liang HR, Chen ZS, Li YM, et al. Comorbidity and its impact on 1590
384 patients with Covid-19 in China: A Nationwide Analysis. *Eur Respir J.* 2020.
- 385 4. Petrilli C, Jones S, Yang J, Rajagopalan H, O'Donnell L, Chernyak Y, et al. Factors associated with
386 hospitalization and critical illness among 4,103 patients with COVID-19 disease in New York City.
387 2020.
- 388 5. COVID-19 Surveillance Group. Characteristics of COVID-19 patients dying in Italy: report based
389 on available data on March 20th, 2020. Rome, Italy: Istituto Superiore Di Sanita; 2020.
- 390 6. Guan WJ, Ni ZY, Hu Y, Liang WH, Ou CQ, He JX, et al. Clinical Characteristics of Coronavirus
391 Disease 2019 in China. *N Engl J Med.* 2020.
- 392 7. Bhatraju PK, Ghassemieh BJ, Nichols M, Kim R, Jerome KR, Nalla AK, et al. Covid-19 in Critically Ill
393 Patients in the Seattle Region - Case Series. *N Engl J Med.* 2020.
- 394 8. Team CC-R. Preliminary Estimates of the Prevalence of Selected Underlying Health Conditions
395 Among Patients with Coronavirus Disease 2019 - United States, February 12-March 28, 2020.
396 *MMWR Morb Mortal Wkly Rep.* 2020;69(13):382-6.
- 397 9. Team CC-R. Severe Outcomes Among Patients with Coronavirus Disease 2019 (COVID-19) -
398 United States, February 12-March 16, 2020. *MMWR Morb Mortal Wkly Rep.* 2020;69(12):343-6.

- 399 10. Garg S, Kim L, Whitaker M, O'Halloran A, Cummings C, Holstein R, et al. Hospitalization Rates
400 and Characteristics of Patients Hospitalized with Laboratory-Confirmed Coronavirus Disease
401 2019 - COVID-NET, 14 States, March 1-30, 2020. *MMWR Morb Mortal Wkly Rep.*
402 2020;69(15):458-64.
- 403 11. Liang K-Y, Zeger SL. Longitudinal Data Analysis Using Generalized Linear Models.
- 404 12. Hoogendoorn WE, Bongers PM, de Vet HC, Twisk JW, van Mechelen W, Bouter LM. Comparison
405 of two different approaches for the analysis of data from a prospective cohort study: an
406 application to work related risk factors for low back pain. *Occup Environ Med.* 2002;59(7):459-
407 65.
- 408 13. Rentsch C, Kidwai-Khan F, Tate J, Park L, King Jr. J, Skanderson M, et al. Covid-19 Testing,
409 Hospital Admission, and Intensive Care Among 2,026,227 United States Veterans Aged 54-75
410 Years. 2020.
- 411 14. Chen T, Wu D, Chen H, Yan W, Yang D, Chen G, et al. Clinical characteristics of 113 deceased
412 patients with coronavirus disease 2019: retrospective study. *BMJ.* 2020;368:m1091.
- 413 15. Zhou F, Yu T, Du R, Fan G, Liu Y, Liu Z, et al. Clinical course and risk factors for mortality of adult
414 inpatients with COVID-19 in Wuhan, China: a retrospective cohort study. *Lancet.*
415 2020;395(10229):1054-62.
- 416 16. Onder G, Rezza G, Brusaferro S. Case-Fatality Rate and Characteristics of Patients Dying in
417 Relation to COVID-19 in Italy. *JAMA.* 2020.
- 418 17. Wu C, Chen X, Cai Y, Xia Ja, Zhou X, Xu S, et al. Risk Factors Associated With Acute Respiratory
419 Distress Syndrome and Death in Patients With Coronavirus Disease 2019 Pneumonia in Wuhan,
420 China. *JAMA Internal Medicine.* 2020.
- 421 18. Richardson S, Hirsch JS, Narasimhan M, Crawford JM, McGinn T, Davidson KW, et al. Presenting
422 Characteristics, Comorbidities, and Outcomes Among 5700 Patients Hospitalized With COVID-19
423 in the New York City Area. *JAMA.* 2020.
- 424 19. Myers LC, Parodi SM, Escobar GJ, Liu VX. Characteristics of Hospitalized Adults With COVID-19 in
425 an Integrated Health Care System in California. *JAMA.* 2020.
- 426 20. Goyal P, Choi JJ, Pinheiro LC, Schenck EJ, Chen R, Jabri A, et al. Clinical Characteristics of Covid-19
427 in New York City. *N Engl J Med.* 2020.
- 428 21. Chen N, Zhou M, Dong X, Qu J, Gong F, Han Y, et al. Epidemiological and clinical characteristics
429 of 99 cases of 2019 novel coronavirus pneumonia in Wuhan, China: a descriptive study. *Lancet.*
430 2020;395(10223):507-13.
- 431 22. Centers for Disease Control & Prevention 2020;Pages[https://www.cdc.gov/coronavirus/2019-
432 ncov/hcp/underlying-conditions.html](https://www.cdc.gov/coronavirus/2019-ncov/hcp/underlying-conditions.html).
- 433 23. Centers for Disease Control & Prevention 2020;Pages[https://www.cdc.gov/coronavirus/2019-
434 ncov/need-extra-precautions/groups-at-higher-risk.html](https://www.cdc.gov/coronavirus/2019-ncov/need-extra-precautions/groups-at-higher-risk.html).
- 435 24. Kujawski SA, Wong KK, Collins JP, Epstein L, Killerby ME, Midgley CM, et al. Clinical and virologic
436 characteristics of the first 12 patients with coronavirus disease 2019 (COVID-19) in the United
437 States. *Nature Medicine.* 2020.
- 438 25. Centers for Disease Control & Prevention
439 2020;Pages<https://gis.cdc.gov/grasp/fluview/FluHospChars.html>.
- 440 26. Arriola C, Garg S, Anderson EJ, Ryan PA, George A, Zansky SM, et al. Influenza Vaccination
441 Modifies Disease Severity Among Community-dwelling Adults Hospitalized With Influenza. *Clin
442 Infect Dis.* 2017;65(8):1289-97.
443

Figure 1. Flow diagram of analytic sample.

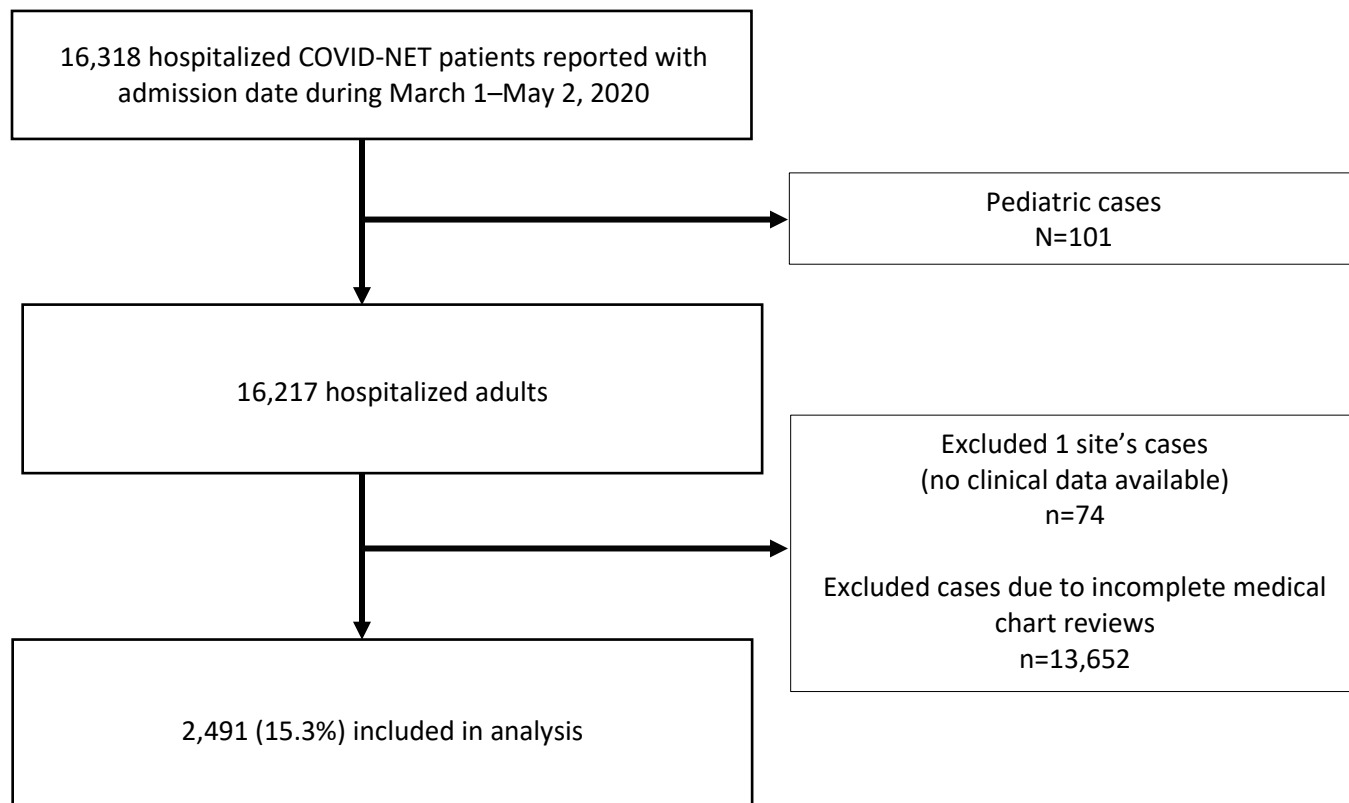


Table 1. Demographic and clinical characteristics of adults hospitalized with COVID-19 — COVID-NET, 13 sites (N=2,491)

	n, %
Age in years (median, IQR)	62, 50–75
Age category	
18–39	302 (12.1)
40–49	319 (12.8)
50–64	744 (29.9)
65–74	478 (19.2)
75–84	397 (15.9)
85+	251 (10.1)
Male	1,326 (53.2)
Race/ethnicity (n=2,490)	
Non-Hispanic White	1,178 (47.3)
Non-Hispanic Black	755 (30.3)
Hispanic	306 (12.3)
Non-Hispanic Other*	158 (6.3)
Unknown	93 (3.7)
Residence at time of hospitalization (n=2,482)	
Private residence	1,899 (76.5)
Facility†	495 (19.9)
Homeless/Shelter	40 (1.6)
Other‡	45 (1.8)
Unknown	3 (0.1)
Smoker (n=2,489)	
Current	150 (6.0)
Former	642(25.8)
No or Unknown	1,697 (68.2)
Any underlying condition§ (n=2,489)	2,278 (91.5)
Hypertension (n=2,488)	1,428 (57.4)
Obesity¶ (n=2,332)	1154 (49.7)
Severe obesity¶ (n=2,332)	325 (14.0)
Chronic metabolic disease (n=2,486)	1,024 (41.2)
Diabetes mellitus (n=2,486)	819 (32.9)
Chronic lung disease (n=2,484)	747 (30.1)
Asthma (n=2,484)	314 (12.6)
Chronic Obstructive Pulmonary Disease (n=2,484)	266 (10.7)
Cardiovascular disease (n=2,486)	859 (34.6)
Coronary artery disease (n=2,486) ¶¶	352 (14.2)
Congestive heart failure (n=2,486)	284 (11.4)
Neurologic disease (n=2,484)	548 (22.1)
Renal disease (n=2,488)	386 (15.5)
Immunosuppressive condition (n=2,487)	263 (10.6)
Gastrointestinal or Liver disease (n=2,486)	118 (4.7)
Hematologic condition (n=2,483)	80 (3.2)
Rheumatologic or autoimmune disease (n=2,486)	77 (3.1)

Pregnancy (n=279)**	36 (12.9)
Number of underlying medical conditions (by major category) (n=2,490)	
0	212 (8.5)
1	480 (19.3)
2	510 (20.5)
3+	1,288 (51.7)
Outpatient use of medications	
ACE-inhibitor (n=1,892)	316 (16.7)
Angiotensin receptor blockers (ARBs) (n=1,895)	257 (13.6)

IQR = interquartile range; ACE = angiotensin-converting enzyme inhibitors

*Non-Hispanic Other includes: Non-Hispanic American Indian or Alaskan Native (n=24), Non-Hispanic Asian (n=128), and Non-Hispanic multiracial (n=6)

†Facility includes rehabilitation facilities, assisted living/residential care, group homes, nursing homes, skilled nursing facilities, long-term care facilities, long-term acute care hospitals, alcohol/drug treatment centers, and psychiatric facilities.

‡Other includes home with services (n=43), correctional facility (n=1), and hospice (n=1).

§See Supplementary Table 1 for definitions of underlying medical conditions.

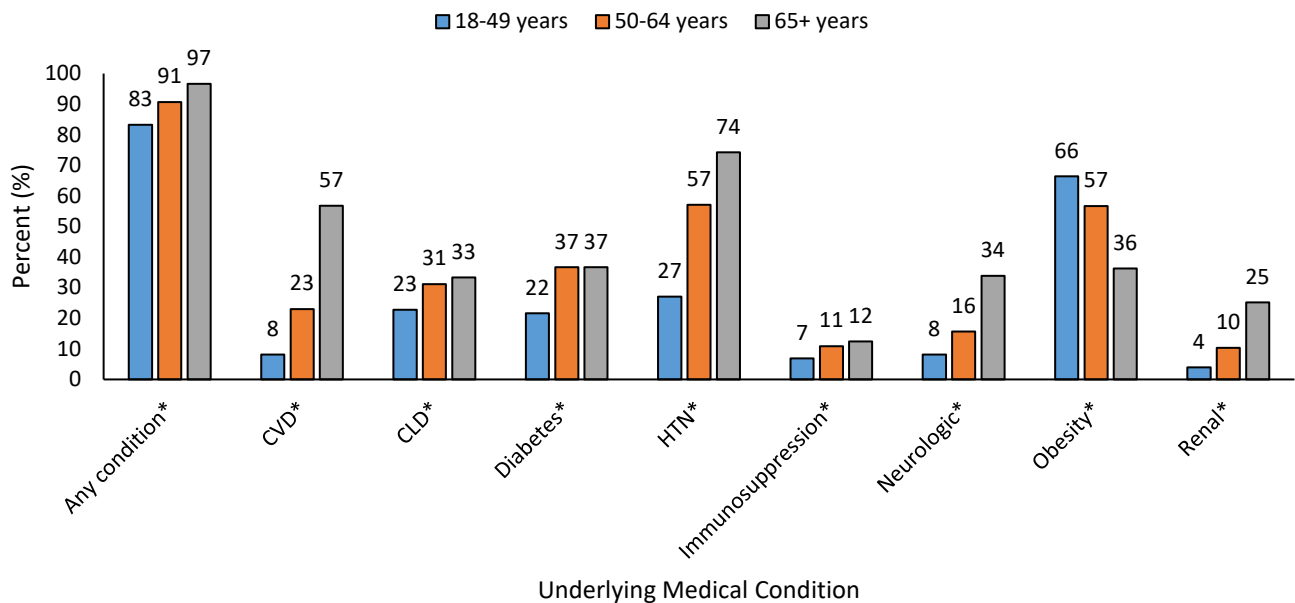
||Obesity is defined as body mass index (BMI) ≥ 30 kg/m², and severe obesity is defined as BMI ≥ 40 kg/m².

¶Includes coronary artery disease, history of coronary artery bypass grafting, and history of myocardial infarction

**Denominator includes women aged 15–49 years.

Figure 2. Select underlying medical conditions* of adults hospitalized with COVID-19, by age, sex, and race/ethnicity — COVID-NET, 13 sites (N=2,491)

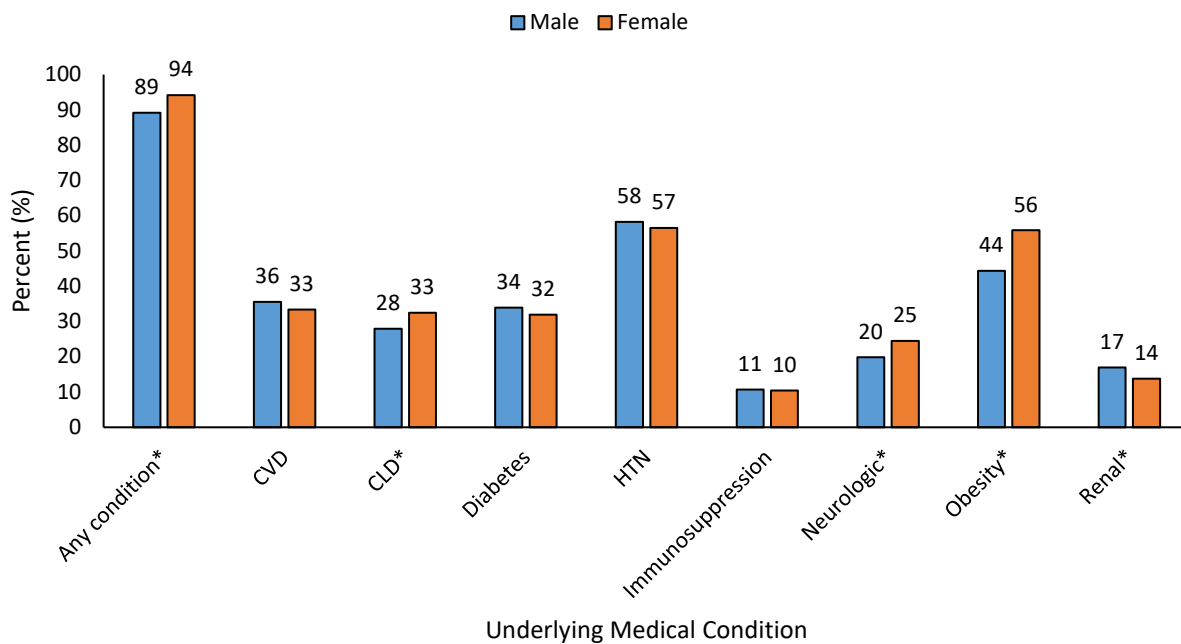
A. Age (n=2,489)



*p-value < 0.05

CVD = Cardiovascular disease (excluding hypertension); HTN = hypertension; CLD = chronic lung disease.

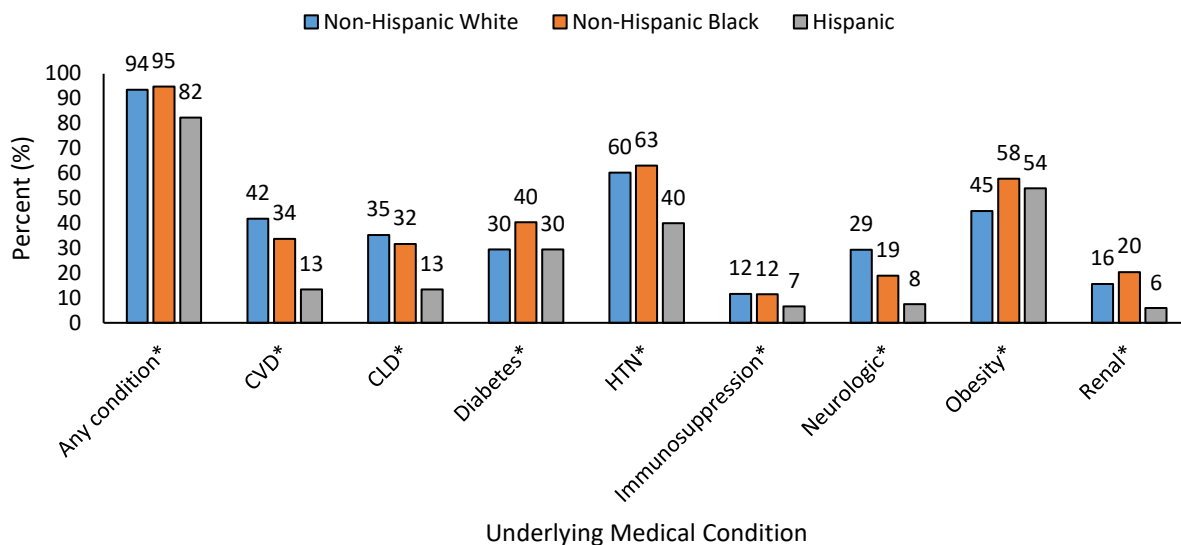
B. Sex (n=2,489)



*p-value < 0.05

CVD = Cardiovascular disease (excluding hypertension); HTN = hypertension; CLD = chronic lung disease.

C. Race/Ethnicity (n=2,488)



*p-value < 0.05

CVD = Cardiovascular disease (excluding hypertension); HTN = hypertension; CLD = chronic lung disease.

*The underlying medical condition categories are not mutually exclusive. Patients can have more than once underlying medical condition.

Table 2. Clinical course, interventions, and outcomes of adults hospitalized with COVID-19 — COVID-NET, 13 sites (N=2,491)

	%
Symptoms on admission* (n=2,482)	
Cough	1,855 (74.7)
Fever or chills	1,835 (73.9)
Shortness of breath	1,740 (70.1)
Muscle aches/myalgias	722 (29.1)
Diarrhea	676 (27.2)
Nausea or vomiting	621 (25.0)
Hospitalization length of stay in days, median (IQR) (n=2,487)	6 (3–11)
Days from symptom onset to hospitalization (median, IQR) (n=1,937)	6 (3–8)
Initial vital signs	
Temperature (°Celsius, median, IQR) (n=2,469)	37.4 (36.9–38.1)
Heart rate (median, IQR) (n=2,479)	95 (83–108)
Systolic blood pressure (median, IQR) (n=2,483)	132 (118–147)
Respiratory rate (median, IQR) (n=2,461)	20 (18–23)
Oxygen saturation (among those on room air) (median, IQR) (n=1,969)	94 (92–97)
Initial laboratory values	
White blood cell count (median, IQR) – per mm ³ (n=2,458)	6.3 (4.7–8.5)
Hematocrit (median, IQR) - % (n=2,461)	40.6 (36.9–43.9)
Platelet count (median, IQR) – per mm ³ (n=2,461)	195.0 (156.0–249.0)
Sodium (median, IQR) – mmol/L (n=2,460)	137.0 (134.0–139.0)
Blood Urea Nitrogen (median, IQR) – mg/dl (n=2,443)	16.0 (11.0–25.0)
Creatinine (median, IQR) – mg/dl (n=2,462)	1.0 (0.8–1.4)
Glucose (median, IQR) – mg/dl (n=2,459)	117.0 (102.0–149.0)
Aspartate transaminase (median, IQR) – U/L (n=2,149)	40.0 (28.0–61.0)
Alanine aminotransferase (median, IQR) – U/L (n=2,164)	31.0 (20.0–50.0)
Arterial pH (median, IQR) (n=487)	7.35 (7.40–7.45)
Abnormal chest X-ray during hospitalization (n=1,932)	1,769 (91.6)
Abnormal chest CT during hospitalization (n=566)	540 (95.4)
Ground glass opacities (n=566)	350 (61.8)
Investigational medication regimens for COVID-19[†] (n=2,482)	1,125 (45.3)
Hydroxychloroquine [‡] (n=2,479)	1,065 (43.0)
Azithromycin + ≥ 1 other COVID-19 treatment (n=2,479)	725 (29.2)
Tocilizumab (n=2,479)	103 (4.2)
Atazanavir (n=2,479) [§]	94 (3.8)
Remdesivir (n=2,479) [‡]	53 (2.1)
Lopinavir/ritonavir (n=2,479) [§]	27 (1.1)
Convalescent plasma (n=2,479)	9 (0.4)
Chloroquine (n=2,479)	7 (0.3)
Sarilumab (n=2,479) [‡]	6 (0.2)
Investigational drug (not specified) RCT (n=2,479)	1 (0.0)

ICU Admission (n=2,490)	798 (32.0)
ICU length of stay (days, median, IQR) (n=771)	6 (2–11)
Highest level of respiratory support required (n=2,489)	
Invasive mechanical ventilation	462 (18.6)
BIPAP or CPAP	82 (3.3)
High flow nasal cannula	170 (6.8)
ECMO (n=2,487)	9 (0.4)
Vasopressor use (n=2,486)	373 (15.0)
Systemic steroids (n=2,489)	321 (12.9)
Renal replacement therapy (n=2,487)	115 (4.6)
Discharge Diagnoses	
Pneumonia (n=2,485)	1,395 (56.1)
Acute respiratory failure (n=2,487)	999 (40.2)
Acute renal failure (n=2,485)	456 (18.4)
Sepsis (n=2,479)	443 (17.9)
Acute respiratory distress syndrome (n=2,485)	255 (10.3)
Encephalitis (n=2,482)	151 (6.1)
Congestive heart failure (n=2,485)	51 (2.1)
Asthma exacerbation (n=2,486)	43 (1.7)
COPD exacerbation (n=2,486)	39 (1.6)
Acute myocardial infarction (n=2,485)	38 (1.5)
In-hospital death (n=2,490)	420 (16.9)

IQR = interquartile range; CT = computed tomography; ICU = intensive care unit; BIPAP = bilevel positive airway pressure; CPAP = continuous positive airway pressure; ECMO = extracorporeal membrane oxygenation; COPD = chronic obstructive pulmonary disease

*See Supplementary Table 2 for additional symptom data.

†Not mutually exclusive categories

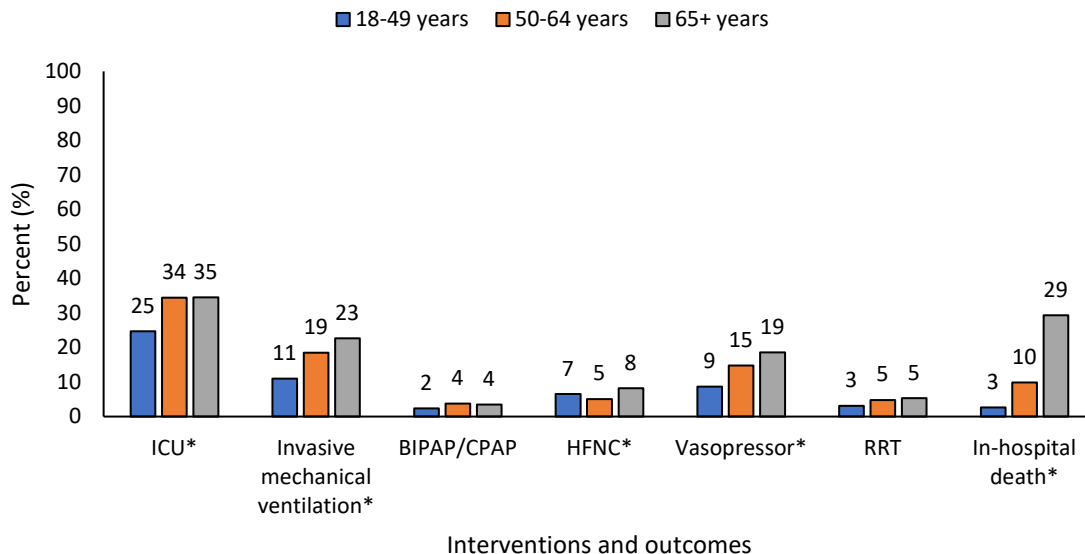
*Includes randomized controlled trials where it cannot be determined whether the case received treatment vs. placebo (remdesivir, 24; hydroxychloroquine 15; and sarilumab 5).

§Persons with HIV/AIDS were excluded.

||Discharge diagnoses recorded from the hospital discharge summary and not based on ICD-10 discharge codes.

Figure 3. Interventions and outcomes of adults hospitalized with COVID-19, by age, sex, and race/ethnicity — COVID-NET, 13 sites (N=2,491)

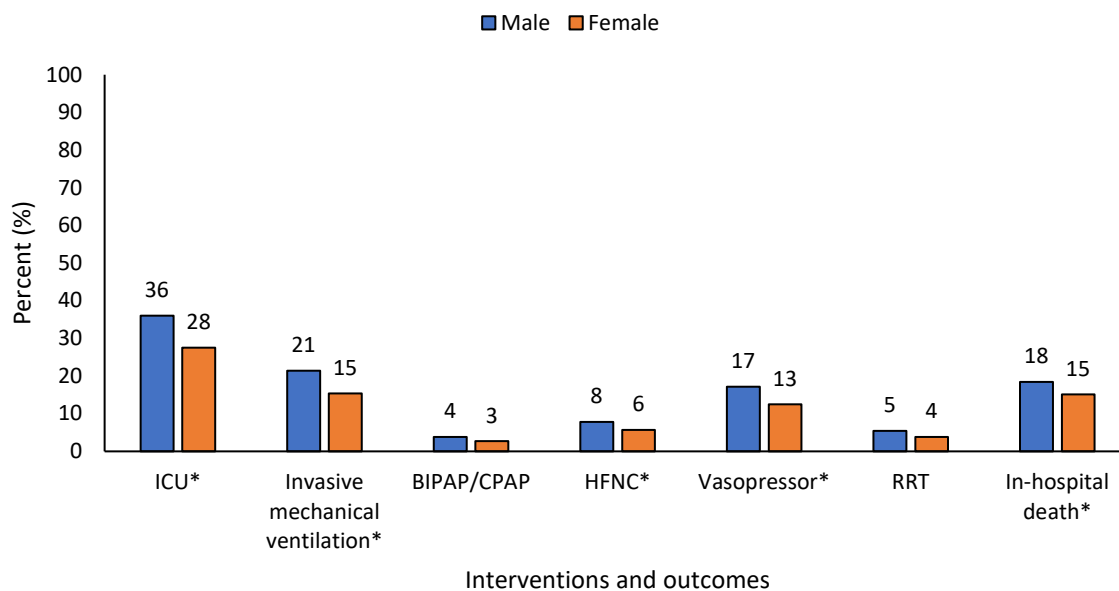
A. Age (n=2,490)



*p-value < 0.05

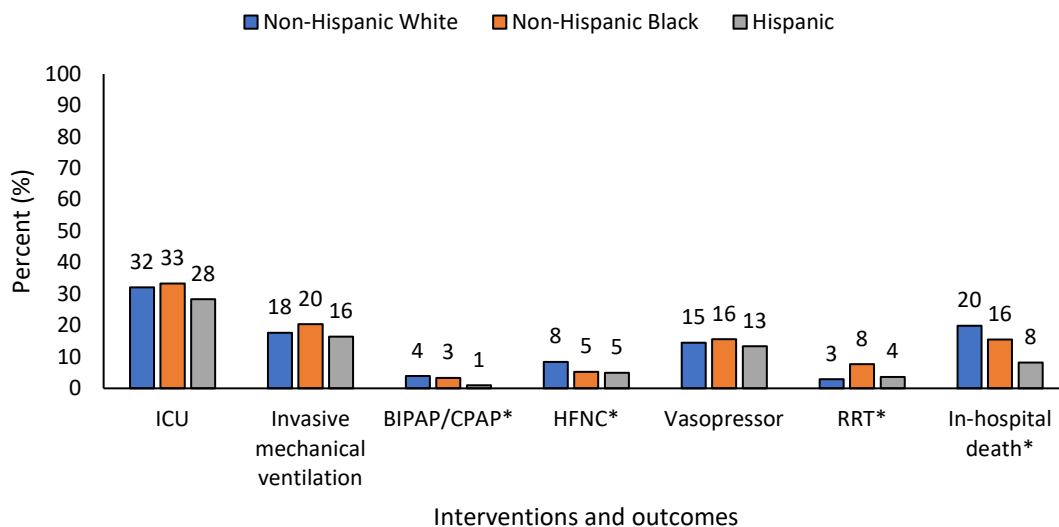
ICU = intensive care unit; BIPAP = bilevel positive airway pressure; CPAP = continuous positive airway pressure; HFNC = high flow nasal cannula; RRT = renal replacement therapy

B. Sex (n=2,490)



ICU = intensive care unit; BIPAP = bilevel positive airway pressure; CPAP = continuous positive airway pressure; HFNC = high flow nasal cannula; RRT = renal replacement therapy

C. Race/Ethnicity (n=2,490)



*p-value <0.05

ICU = intensive care unit; BIPAP = bilevel positive airway pressure; CPAP = continuous positive airway pressure; HFNC = high flow nasal cannula; RRT = renal replacement therapy

* For mechanical ventilation, BIPAP/CPAP, and HFNC, patients are assigned based on the highest level of respiratory support required during hospitalization (i.e. invasive mechanical ventilation followed by BIPAP or CPAP, followed by high flow nasal cannula).

Table 3. Risk factors for ICU admission and in-hospital mortality — COVID-NET, 13 sites (N=2,491)

A. ICU Admission (N=2,490)*

Characteristic	Category	Not in ICU (n=1,692)	In ICU (n=798)	Total (N=2,490)	P-value	Unadjusted Risk Ratio	95% CI	Adjusted Risk Ratio	95% CI
Age category					<0.0001				
	18–39 years	240 (14)	62 (8)	302		Reference	N/A	Reference	N/A
	40–49 years	227 (13)	91 (11)	318		1.38	(1.08, 1.75)	1.22	(0.96, 1.56)
	50–64 years	488 (29)	256 (32)	744		1.64	(1.36, 1.99)	1.53	(1.28, 1.83)
	65–74 years	298 (18)	180 (23)	478		1.80	(1.50, 2.16)	1.65	(1.34, 2.03)
	75–84 years	248 (15)	149 (19)	397		1.80	(1.52, 2.14)	1.84	(1.6, 2.11)
	85+ years	191 (11)	60 (8)	251		1.16	(0.87, 1.54)	1.43	(1.00, 2.04) [†]
Sex					<0.0001				
	Female	844 (50)	320 (40)	1164		Reference	N/A	Reference	N/A
	Male	848 (50)	478 (60)	1326		1.30	(1.20, 1.42)	1.34	(1.20, 1.50)
Race/ethnicity					0.63				
	NH White	800 (47)	378 (47)	1178		Reference		Reference	N/A
	NH Black	503 (30)	251 (31)	754		1.03	(0.93, 1.13)	1.01	(0.89, 1.15)
	Hispanic	219 (13)	87 (11)	306		0.86	(0.69, 1.09)	0.96	(0.76, 1.21)
	NH Other	105 (6)	53 (7)	158		1.03	(0.89, 1.18)	1.06	(0.83, 1.37)
	Unknown	64 (4)	29 (4)	93		0.97	(0.77, 1.22)	0.93	(0.74, 1.15)
Smoker					0.0001				
	No/Unknown	1185 (70)	512 (64)	1697		Reference		Reference	N/A
	Former	395 (23)	247 (31)	642		1.26	(1.10, 1.43)	1.07	(0.92, 1.24)
	Current	112 (7)	38 (5)	150		0.84	(0.67, 1.06)	0.81	(0.61, 1.06)
Hypertension					0.03				
	No	746 (44)	314 (39)	1060		Reference		Reference	N/A
	Yes	945 (56)	483 (61)	1428		1.13	(1.01, 1.27)	0.92	(0.79, 1.07)
Obesity (BMI≥30)					0.0013				
	No	821 (53)	347 (46)	1168		Reference	N/A	Reference	N/A
	Yes	739 (47)	415 (54)	1154		1.25	(1.14, 1.37)	1.31	(1.16, 1.47)

Diabetes					<0.0001				
	No	1176 (70)	491 (62)	1667		Reference	N/A	Reference	N/A
	Yes	513 (30)	306 (38)	819		1.20	(1.08, 1.34)	1.13	(1.03, 1.24)
Chronic Lung Disease					<0.0001				
	No	1222 (72)	515 (65)	1737		Reference	N/A	Reference	N/A
	Yes	466 (28)	281 (35)	747		1.25	(1.09, 1.44)	1.17	(1.00, 1.37) [‡]
Cardiovascular Disease					0.006				
	No	1136 (67)	491 (62)	1627		Reference	N/A	Reference	N/A
	Yes	553 (33)	306 (38)	859		1.17	(1.09, 1.26)	0.98	(0.88, 1.09)
Neurologic					0.06				
	No	1297 (77)	639 (80)	1936		Reference	N/A	Reference	N/A
	Yes	390 (23)	158 (20)	548		0.88	(0.76, 1.03)	0.85	(0.70, 1.04)
Renal					0.004				
	No	1453 (86)	649 (81)	2102		Reference	N/A	Reference	N/A
	Yes	238 (14)	148 (19)	386		1.23	(1.11, 1.37)	1.05	(0.94, 1.16)
Immuno-suppression					<0.0001				
	No	1541 (91)	683 (86)	2224		Reference	N/A	Reference	N/A
	Yes	149 (9)	114 (14)	263		1.39	(1.22, 1.58)	1.29	(1.13, 1.47)
Gastro-intestinal or Liver					0.87				
	No	1609 (95)	759 (95)	2368		Reference	N/A	N/A	N/A
	Yes	81 (5)	37 (5)	118		0.98	(0.80, 1.20)	N/A	N/A
Hematologic					0.87				
	No	1632 (97)	771 (97)	2403		Reference	N/A	N/A	N/A
	Yes	55 (3)	25 (3)	80		0.96	(0.76, 1.22)	N/A	N/A
Rheumatologic or Autoimmune					0.87				
	No	1637 (97)	772 (97)	2409		Reference	N/A	N/A	N/A
	Yes	53 (3)	24 (3)	77		0.96	(0.74, 1.26)	N/A	N/A
Outpatient ACE-Inhibitor Use					0.99				
	No/Unknown	1063 (83)	513 (83)	1576		Reference	N/A	N/A	N/A
	Yes	213 (17)	103 (17)	316		0.99	(0.84, 1.18)	N/A	N/A

Outpatient Angiotensin Receptor Blocker Use					0.04				
	No/Unknown	1118 (88)	520 (84)	1638		Reference	N/A	Reference	N/A
	Yes	159 (12)	98 (16)	257		1.18	(1.06, 1.31)	1.07	(0.95, 1.21)

ICU = intensive care unit; CI = confidence interval; N/A = not applicable; ACE = angiotensin-converting-enzyme

*Final model included age, sex, race/ethnicity, smoking status, hypertension, obesity, diabetes, chronic lung disease, cardiovascular disease, neurologic disease, renal disease, immunosuppression, and outpatient use of an angiotensin receptor blocker.

[†]p=0.0494

[‡]p=0.0524

B. In-hospital mortality (N=2,490)*

Characteristic	Category	Discharged Alive (n=2070)	In-Hospital Death (n=420)	Total (N=2490)	P-value	Unadjusted Risk Ratio	95% CI	Adjusted Risk Ratio	95% CI
Age					<0.0001				
	18-39 years	296 (14)	6 (1)	302		Reference	N/A	Reference	N/A
	40-49 years	308 (15)	10 (2)	318		1.51	(0.59, 3.85)	1.23	(0.51, 2.99)
	50-64 years	670 (32)	74 (18)	744		4.62	(2.1, 10.18)	3.11	(1.50, 6.46)
	65-74 years	375 (18)	103 (25)	478		9.88	(4.28, 22.85)	5.77	(2.64, 12.64)
	75-84 years	277 (13)	120 (29)	397		13.89	(6.12, 31.52)	7.67	(3.35, 17.59)
	85+ years	144 (7)	107 (25)	251		19.46	(9.39, 40.35)	10.98	(5.09, 23.69)
Sex					0.03				
	Female	988 (48)	176 (42)	1164		Reference	N/A	Reference	N/A
	Male	1082 (52)	244 (58)	1326		1.22	(1.02, 1.47)	1.30	(1.14, 1.49)
Race/ethnicity					<0.0001				
	NH White	944 (46)	234 (56)	1178		Reference	N/A	Reference	N/A
	NH Black	637 (31)	117 (28)	754		0.75	(0.57, 0.99)	1.07	(0.85, 1.35)
	Hispanic	281 (14)	25 (6)	306		0.42	(0.32, 0.56)	1.17	(0.91, 1.51)
	NH Other	132 (6)	26 (6)	158		0.82	(0.54, 1.25)	1.26	(0.86, 1.82)
	Unknown	76 (4)	17 (4)	93		0.91	(0.44, 1.88)	1.30	(0.74, 2.31)
Smoker					<0.0001				
	No/Unknown	1461 (71)	236 (56)	1697		Reference	N/A	Reference	NA
	Former	481 (23)	161 (38)	642		1.75	(1.51, 2.04)	1.14	(0.98, 1.33)
	Current	128 (6)	22 (5)	150		1.06	(0.75, 1.49)	1.22	(0.99, 1.51)
Hypertension					<0.0001				
	No	955 (46)	105 (25)	1060		Reference	N/A	Reference	NA
	Yes	1114 (54)	314 (75)	1428		2.18	(1.66, 2.86)	1.07	(0.79, 1.45)
Obesity (BMI≥30)					0.001				
	No	944 (49)	224 (58)	1168		Reference	N/A	Reference	N/A
	Yes	992 (51)	162 (42)	1154		0.73	(0.61, 0.86)	1.09	(0.92, 1.30)
Diabetes					<0.0001				

	No	1423 (69)	244 (58)	1667		Reference	N/A	Reference	N/A
	Yes	644 (31)	175 (42)	819		1.44	(1.2, 1.72)	1.19	(1.01, 1.40)
Chronic Lung Disease					<0.0001				
	No	1489 (72)	248 (59)	1737		Reference	N/A	Reference	N/A
	Yes	577 (28)	170 (41)	747		1.56	(1.27, 1.91)	1.31	(1.13, 1.52)
Cardiovascular Disease					<0.0001				
	No	1462 (71)	165 (39)	1627		Reference	N/A	Reference	N/A
	Yes	605 (29)	254 (61)	859		2.85	(2.42, 3.36)	1.28	(1.03, 1.58)
Neurologic					<0.0001				
	No	1674 (81)	262 (63)	1936		Reference	N/A	Reference	N/A
	Yes	391 (19)	157 (37)	548		2.10	(1.72, 2.56)	1.25	(1.04, 1.50)
Renal					<0.0001				
	No	1814 (88)	288 (69)	2102		Reference	N/A	Reference	N/A
	Yes	255 (12)	131 (31)	386		2.45	(2.04, 2.93)	1.33	(1.10, 1.61)
Immuno-suppression					<0.0001				
	No	1873 (91)	351 (84)	2224		Reference	N/A	Reference	N/A
	Yes	195 (9)	68 (16)	263		1.58	(1.33, 1.88)	1.39	(1.13, 1.70)
Gastro-intestinal or Liver					0.12				
	No	1975 (96)	393 (94)	2368		Reference	N/A	N/A	N/A
	Yes	92 (4)	26 (6)	118		1.30	(1.00, 1.70)	N/A	N/A
Hematologic					0.02				
	No	2005 (97)	398 (95)	2403		Reference	N/A	Reference	N/A
	Yes	59 (3)	21 (5)	80		1.54	(1.11, 2.12)	1.33	(0.93, 1.9)
Rheumatologic or Autoimmune					0.03				
	No	2010 (97)	399 (95)	2409		Reference	N/A	Reference	N/A
	Yes	57 (3)	20 (5)	77		1.53	(1.03, 2.29)	0.87	(0.66, 1.16)
Outpatient ACE-Inhibitor Use					0.99				
	No/Unknown	1312 (83)	264 (83)	1576		Reference	N/A	N/A	N/A
	Yes	263 (17)	53 (17)	316		0.98	(0.74, 1.30)	N/A	N/A
Outpatient Angiotensin					0.11				
	No/Unknown	1372 (87)	266 (84)	1638		Reference	N/A	N/A	N/A

Receptor Blocker Use	Yes	205 (13)	52 (16)	257		1.19	(0.91, 1.57)	N/A	N/A
-----------------------------	-----	----------	---------	-----	--	------	--------------	-----	-----

CI = confidence interval; N/A = not applicable; ACE = angiotensin-converting-enzyme

*Final model adjusted for age, sex, race/ethnicity, smoker, hypertension, obesity, diabetes, chronic lung disease, cardiovascular disease, neurologic disease, renal disease, immunosuppression, hematologic disorders, and rheumatologic or autoimmune disease.