

1 **Field performance evaluation of the PanBio rapid SARS-CoV-2 antigen assay in an**
2 **epidemic driven by 501Y.v2 (lineage B.1.351) in the Eastern Cape, South Africa**

3

4 **Oluwakemi Laguda Akingba^{a,b}, Kaitlin Sprong^{a,b} and Diana Ruth Hardie^{a,c}**

5

6

7 ^aNational Health Laboratory Service, South Africa

8 ^bDepartment of Laboratory Medicine and Pathology, Faculty of Health Sciences, Walter
9 Sisulu University, Mthatha, South Africa

10 ^cDivision of Medical Virology, Department of Pathology, University of Cape Town, Cape
11 Town, South Africa

12 word count: 1256

13

14 Corresponding author: Diana Hardie, C18 Laboratory, Groote Schuur Hospital, Anzio Rd
15 Observatory, 7925, Cape Town, South Africa

16 E mail: diana.hardie@uct.ac.za

17 Oluwakemi Laguda Akingba

18 e mail: Oluwakemi.LA@nhls.ac.za

19 Kaitlin Sprong

20 e mail: Kaitlin.sprong@nhls.ac.za

21

22

23 **Abstract:**

24 Background: South Africa was the African country most severely affected by the SARS-CoV-
25 2 pandemic during 2020, experiencing 2 waves of infection. During the first wave,
26 diagnostics were largely based on reverse transcription-linked PCR (RT-PCR). The Abbott
27 PanBio antigen test was deployed during the 2nd wave which was driven by emergence of
28 the 501Y.v2 variant. At the time of evaluation in mid-November 2020, 501Y.v2 was the
29 dominant circulating virus in Nelson Mandela Bay, in the Eastern Cape Province.

30 Methods: A prospective diagnostic evaluation study was undertaken, during a period of
31 high community transmission, to evaluate the field performance of the PanBio antigen RTD.
32 Testing was conducted at mobile community testing centres on 677 ambulant patients
33 seeking SARS-CoV-2 testing. RT-PCR was performed on the original naso-pharyngeal antigen
34 swabs to evaluate test performance.

35 Results: Of 146 RT-PCR positive individuals, 101 were RTD positive in the clinic. The antigen
36 RTD had an overall sensitivity of 69.2% (95%CI 61.4, 75.8) and specificity of 99.0% (95%CI
37 98.8, 99.3) in this clinical context. Sensitivity was strongly dependent on the amount of
38 virus in clinical samples, as reflected by the PCR cycle threshold (CT) value, with 100%
39 detection in samples where the CT was <20, 96% with CT between 20-25, 89% with CT
40 between 26-30 and 64% when CT was 31-35.

41 Conclusions: The assay reliably detected 501Y.v2 infections in ambulatory ill patients. Assay
42 sensitivity was >90% in patients with high viral loads who are expected to be most
43 infectious. Negative and positive predictive values were also >90%.

44 **Keywords:**

45 SARS-CoV-2

46 501Y.v2

47 B.1.351

48 Rapid antigen test

49 Point of care

50 COVID-19

51 **Abbreviations:**

52 COVID-19. Coronavirus disease 2019; CT, cycle threshold; SARS-CoV-2, severe acute
53 respiratory syndrome coronavirus 2; RTD, rapid test device; PCR, polymerase chain reaction;
54 RT-PCR, reverse transcription polymerase chain reaction; WHO, world health organisation;
55 501Y.v2, 501Y variant 2; IQR, interquartile range; NP, nasopharyngeal; GISAID, global
56 initiative for sharing all influenza data;

57

58

59 **Background:**

60 During 2020 South Africa was the African country most severely affected by the SARS-CoV-2
61 pandemic with more than 1 380 000 laboratory confirmed cases and 83 918 excess
62 deaths[1]. During this period, the country experienced 2 waves of infection[2]. Provision of
63 an effective diagnostic service proved to be challenging. RT-PCR is the gold standard assay
64 for SARS-CoV-2 diagnosis, however, in the context of high disease prevalence, laboratory
65 systems may easily become overwhelmed. Rapid diagnostics such as antigen tests that can
66 be performed at point of care provide a welcome solution. Their main drawback is lower
67 sensitivity[3]. The WHO advises that assays that meet minimum performance requirements
68 (>80% sensitivity, >97% specificity in the first 7 days of symptoms) can be used in contexts
69 where nucleic acid-based testing is unavailable, or where turn-around times are
70 prolonged[4]. The Abbott PanBio rapid SARS-CoV-2 antigen assay has fulfilled these criteria
71 in evaluations in several studies [5][6]

72 This assay was deployed during the 2nd wave in South Africa which first became apparent in
73 the Eastern Cape Province in October/November 2020. Increased disease activity was
74 associated with emergence of a new variant, namely 501Y.v2[7]. This variant, now referred
75 to as lineage B.1.351, first detected in October 2020 rapidly became the predominant virus,
76 across the country, due to its higher transmissibility[8]. At the time of evaluation in mid-
77 November 2020, it was the dominant circulating virus, responsible for around 84% of
78 infections in Nelson Mandela Bay, estimate based on genomes submitted to global initiative
79 for sharing all influenza data (GISAID) over this time period [9]. This prospective diagnostic
80 evaluation study was designed to evaluate the field performance of the PanBio assay, but
81 also provides evidence on its performance in individuals infected with 501Y.v2. Another
82 novel aspect to this study is that RT PCR was performed on the same swab used for antigen
83 testing, which obviated the need to collect further samples from patients and provided a
84 more direct comparison with the antigen result.

85 **Methods and results:**

86 Prospective diagnostic evaluation study in Nelson Mandela Bay municipality, Eastern Cape
87 South Africa during a period of high disease prevalence, using nasopharyngeal swabs to
88 determine the accuracy of Abbott PanBio COVID-19 antigen RTD.

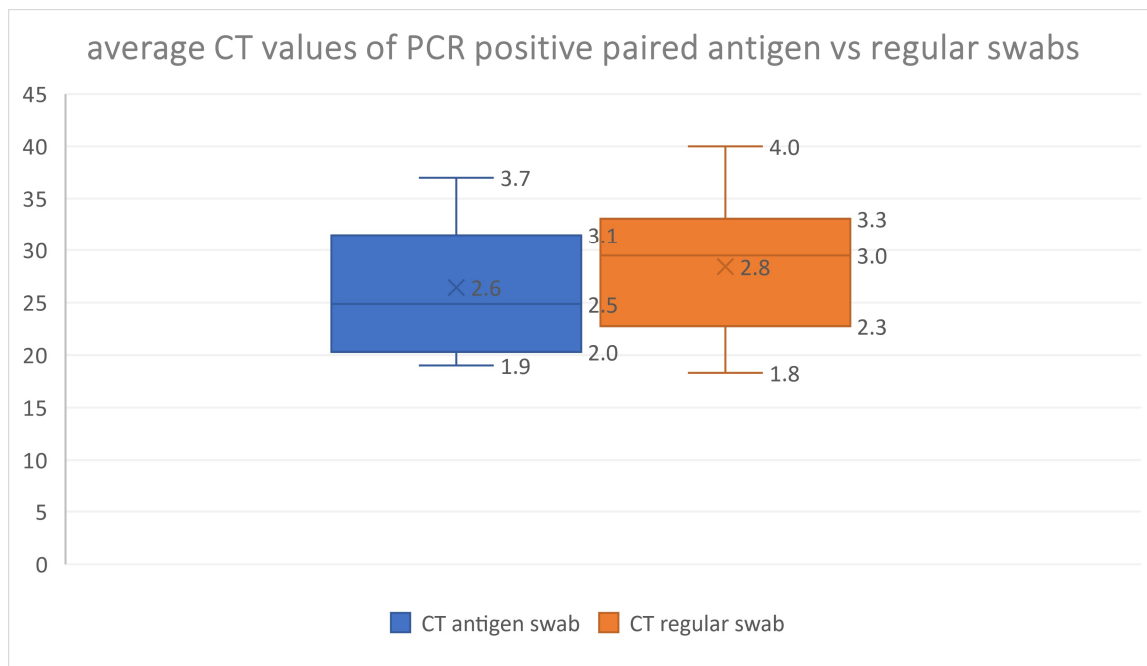
89 **Verifying that used antigen swabs were suitable for PCR:**

90 44 paired swabs were collected from symptomatic patients, one nylon tip, standard issue
91 swab for PCR and the flocked antigen swab from the PanBio test kit. SARSCoV-2 PCR was
92 done on used antigen and matched nylon swabs.

93 The used antigen swab was prepared for PCR as follows: 1 mL saline was added to the swab
94 container using a filter tip. The sample was vortexed and allowed to stand 2 minutes. The
95 bottom cap was opened and fluid bled into a sterile vial. The matching PCR swab was
96 snipped into a vial containing 1.5 ml normal saline and vortexed.

97 Paired samples were extracted on the EasyMag (bioMerieux) platform. RT-PCR was done
98 using the Seegene nCoV assay with amplification on BioRad CFX realTime PCR machine. For
99 PCR positive swabs, mean CT values of the 3 assay targets were compared.

100 Of the 44 paired samples, 13 were antigen positive. 26 were concordantly PCR negative,
101 one sample was PCR positive on the antigen swab, but negative on the regular swab and 17
102 samples were concordantly PCR positive. When comparing mean CT values of the paired
103 swabs, the antigen swab had values of 2 CTs lower than the swab collected for PCR.
104 Wilcoxon signed-rank test p0.0073. (figure 1)



105

106

107 **Figure 1: Average CT values of PCR positive paired antigen vs regular swabs are compared: The**
108 **range of CT values from PCR of the antigen swab were on average 2 CTs lower than for those from**
109 **the standard swabs. Wilcoxon signed-rank test p0.0073.**

110 **Study protocol:**

111 Between 17 and 20 November 2020 mobile clinics ran community testing campaigns at 6
112 sites in Nelson Mandela Bay. Symptomatic patients were invited to undergo antigen testing.
113 Nasopharyngeal (NP) swabs were tested using the PanBio SARS-CoV-2 RTD. Results were
114 communicated to patients immediately. The used swabs were sent for PCR. RT-PCR:
115 Seegene nCoV assay (BioRad CFX platform) was performed on the same swab used for
116 antigen testing. (as described)

117 A total of 677 patients from 6 mobile clinics were tested by both antigen and PCR. Patients
118 were ambulant and seeking COVID testing. They ranged in age range from 3-85 years; 59%
119 were female.

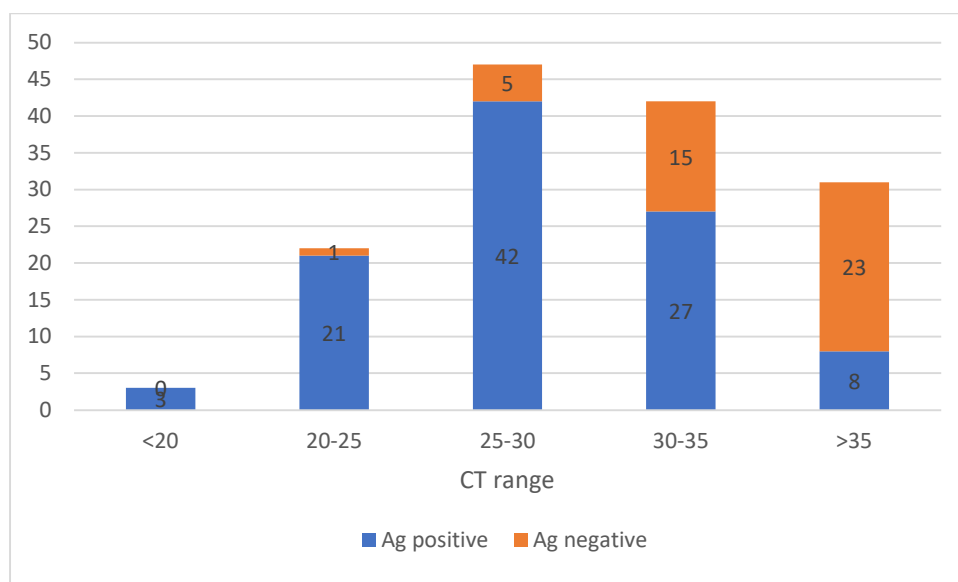
120 Of these, 101 (14.9%) were antigen positive in the clinic. With PCR, 146 samples (21.4%)
121 were reported as positive, 19 (2.8%) as inconclusive (single target positive, CT>38) and 509
122 (75.2%) were negative for both tests. Inconclusive samples were excluded from analysis as
123 their significance was unresolved.

124 **Antigen test performance:**

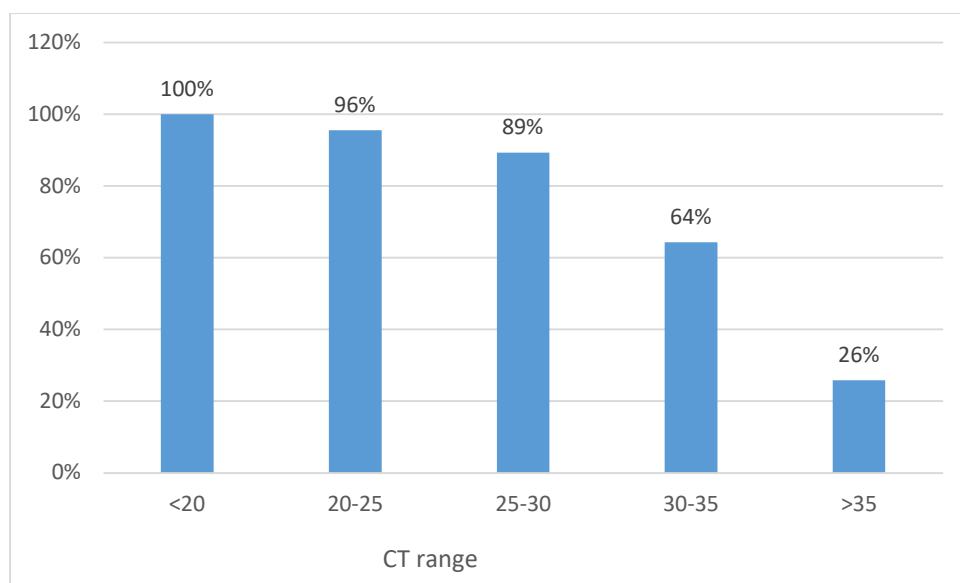
125 Using PCR as the reference standard, the antigen test had an overall sensitivity (positive
126 percent agreement) of 69.17% (95%CI 61.44, 75.80) and specificity (negative percent
127 agreement) of 99.02% (95%CI 98.78, 99.26) in this clinical context.

128 Sensitivity was strongly dependent on the quantity of virus in clinical samples, as reflected
129 by the CT value, with 100% detection by the antigen test in samples where the CT was <20,
130 95.5% with CT between 20-25, 89.3% with CT between 26-30 and 64,3% when CT was 31-35.
131 The CT values of antigen positive and negative samples are shown (Figures 2 a, b)

132 The antigen assay was positive in 3 PCR negative patients. Given the prevalence of infection
133 of 21% (as determined by PCR) the predictive value of a negative test was 91.9% and that of
134 a positive test was 97.12%.



135



136

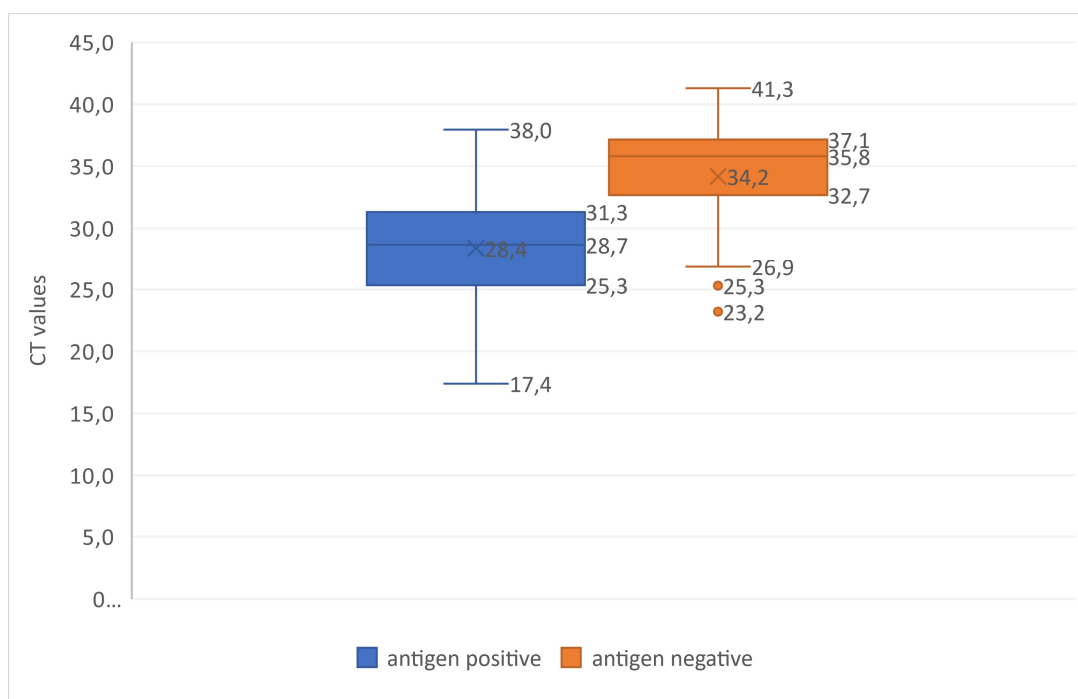
137 **Figure 2 (a) Compares the number of antigen positive and negative samples according to CT**
138 **category values obtained in PCR, (b) Compares the percentage of antigen positive samples**
139 **according to virus levels, as reflected by the mean CT value.**

140

141 **Characteristics of PCR positive samples:**

142 In the 146 PCR positive patients, CT values ranged from 17.4 to 41.3, median 30.1. As
143 expected, the median CT and interquartile range (IQR) was lower in antigen positive samples
144 at 28.7 (IQR 25.3-31.3). In comparison, the median and IQR of CT of antigen negatives was
145 35.8 (IQR 32.7-37.1). (figure 3)

146



147

148 **Figure 3: Compares the range of CT values obtained on antigen positive and negative samples by**
149 **reference PCR. Median and IQR values are given.**

150

151 **Discussion:**

152 This study took place during a period of high community transmission associated with
153 emergence of the 501Y.v2 variant in the Eastern Cape. PCR was performed directly on the
154 antigen swab after testing which enabled a direct comparison to be made between antigen
155 reactivity and PCR on the same sample. Overall, the PanBio antigen test had a sensitivity of
156 69.17% and specificity of 99.0%. The sensitivity is below the 80% WHO benchmark[4].
157 However, context is key. Testing was performed on unselected symptomatic individuals
158 who requested testing, irrespective of symptom duration. This probably accounts for the
159 fact that 50% of PCR positive patients had CT values > 30, indicating that on average
160 sampling may have occurred later during infection than recommended for maximum
161 performance. Nonetheless performance was good in patients with CTs <30. In this range,
162 sensitivity was 91.3%. This concordance (using distinctly different technologies) suggests
163 that the 501Y.v2 was reliably detected by the RTD and at an expected level of frequency
164 when compared with PCR.

165 Assay specificity was similarly good at 99% and the predictive value of a positive test was
166 95%. This fulfils the WHO benchmark specificity requirements for deployment of this
167 assay[4].

168 2 factors could compromise detection of the 501Y.v2 variant; namely amino acid changes in
169 the region of the nucleocapsid protein targeted by kit antibodies, or reduced virus shedding
170 in respiratory tract samples. The higher infectivity of the variant makes the latter
171 explanation unlikely and preliminary evidence does not support it. 501Y.v2 has a single
172 amino acid change in the linker region of the nucleocapsid protein, namely N205I [9]. As
173 this amino acid is located in an unstructured region[10], it should not affect binding of kit
174 antibodies.

175 The main limitation was that it was not feasible to confirm 501Y.v2 infection in positive
176 cases. This was inferred from the fact that resurgence in this district was overwhelmingly
177 due to 501Y.v2, based on contemporaneous genomes submitted to GISAID [9].

178

179 **Conclusion:**

180 The assay reliably detected 501Y.v2 virus infection in ambulatory ill patients in this high
181 prevalence community setting. Sensitivity was >90% in patients with high viral loads who
182 are expected to be most infectious. To optimise the use of antigen RDTs in different and
183 changing circumstances, clinical predictors and the epidemiological context should be
184 considered when deciding how to deploy these assays.

185 **Ethics:**

186 Ethical approval was obtained from the University of Cape Town Human Research Ethics Committee
187 (UCT HREC 862.2020).

188 **Informed consent:**

189 Patients were willing participants and gave verbal consent to diagnostic testing. Data was
190 anonymised and delinked.

191 **Author contributions:**

192 Study concept and design: DH, OL

193 Conduct of study, sample testing: OL, KS

194 Manuscript write up: DH, OL, KS

195 All authors approved the final manuscript

196 **Declaration of competing interest:**

197 The authors report no competing interests.

198 **Funding:**

199 No funding was given for this study.

200 **References:**

201 [1] SAMRC, Report on Weekly Deaths in South Africa, South Africa
202 Med. Res. Counc. 2021 (2020) 1.

203 <https://www.samrc.ac.za/reports/report-weekly-deaths-south-africa>.

204 [2] L.B. Waasila Jassat¹, Cheryl Cohen², Caroline Mudara¹, THE
205 FIRST AND SECOND WAVE OF COVID-19 IN THREE DISTRICTS OF
206 SOUTH AFRICA, COVID-19 Spec. PUBLIC Heal. Surveill. Bull.
207 COVID-19 Spec. PUBLIC Heal. Surveill. Bull. 18 (2021) 1–24.

208 [3] J. Cunningham, S. Beese, J. Dretzke, H. Im, P. Mj, H. Im, P. Mj, L.
209 Hoo, L. Mmg, R. Spijker, V.D.B. A, diagnosis of SARS-CoV-2
210 infection (Review), (2020).

211 <https://doi.org/10.1002/14651858.CD013705>.[www.cochranelibr](http://www.cochranelibrary.com)
212 [ary.com](http://www.cochranelibrary.com).

213 [4] WHO, Antigen-detection in the diagnosis of SARS-CoV-2 infection
214 using rapid immunoassays Interim guidance, 11 September
215 2020., World Heal. Organ. (2020).

- 216 <https://apps.who.int/iris/handle/10665/334253>.
- 217 [5] M. Linares, R. Pérez-Tanoira, A. Carrero, J. Romanyk, F. Pérez-
218 García, P. Gómez-Herruz, T. Arroyo, J. Cuadros, Panbio antigen
219 rapid test is reliable to diagnose SARS-CoV-2 infection in the first
220 7 days after the onset of symptoms, *J. Clin. Virol.* 133 (2020) 3–6.
221 <https://doi.org/10.1016/j.jcv.2020.104659>.
- 222 [6] B. Mühlemann, M. Zuchowski, W. Karen, J. Lei, Comparison of
223 seven commercial SARS-CoV-2 rapid point of care antigen assays,
224 *MedRxiv.* (2020).
225 <https://doi.org/https://doi.org/10.1101/2020.11.12.20230292>.
- 226 [7] H. Tegally, E. Wilkinson, M. Giovanetti, A. Iranzadeh, V. Fonseca,
227 J. Giandhari, D. Doolabh, S. Pillay, E.J. San, K. Wibmer, B.T.
228 Sewell, J. Lourenço, L. Carlos, J. Alcantara, S.L. Kosakovsky, S.
229 Weaver, D. Martin, R.J. Lessells, J.N. Bhiman, C. Williamson, T. De
230 Oliveira, Emergence and rapid spread of a new severe acute
231 respiratory syndrome-related coronavirus 2 (SARS-CoV-2) lineage
232 with multiple spike mutations in South Africa, *Arghavan*
233 *Alisoltani-Dehkordi.* 10 (2020) 2020.12.21.20248640.
234 <https://doi.org/10.1101/2020.12.21.20248640>.
- 235 [8] C.K. Wibmer, F. Ayres, T. Hermanus, M. Madzivhandila, SARS-
236 CoV-2 501Y . V2 escapes neutralization by South African COVID-
237 19 donor plasma, *BioRxiv Prepr.* (2021).

238 <https://doi.org/https://doi.org/10.1101/2021.01.18.427166>doi:

239 [9] <https://corona-maps.live/gisaid/>

240 [10] W. Zeng, G. Liu, H. Ma, D. Zhao, Y. Yang, M. Liu, Biochemica
241 characterisation of SARS-VoV-2 nucleocapsid protein, Biochem.
242 Biophys. Research Commun. 527 (2020) 618–623.

243 <https://doi.org/https://doi.org/10.1016/j.bbrc.2020.04.136>.

244

245

246 **Highlights:**

- 247 • **PanBio SARS-CoV-2 RTD performs well in a field evaluation with high disease**
248 **prevalence**
- 249 • **Good concordance between RT-PCR and RTD in patients with 501Y.v2 variant**
250 **infection.**
- 251 • **RT-PCR on the antigen swab enables a more direct comparison of methods.**

252