

24 **Background**

25 The COVID-19 pandemic caused by SARS-CoV-2 coronavirus threatens global public
26 health. Currently, neutralizing antibodies (NAbs) versus this virus are expected to
27 correlate with recovery and protection of this disease. However, the characteristics of
28 these antibodies have not been well studied in association with the clinical
29 manifestations in patients.

30

31 **Methods**

32 Plasma collected from 175 COVID-19 recovered patients with mild symptoms were
33 screened using a safe and sensitive pseudotyped-lentiviral-vector-based neutralization
34 assay. Spike-binding antibody in plasma were determined by ELISA using RBD, S1,
35 and S2 proteins of SARS-CoV-2. The levels and the time course of SARS-CoV-2-
36 specific NAbs and the spike-binding antibodies were monitored at the same time.

37

38 **Findings**

39 SARS-CoV-2 NAbs were unable to cross-reactive with SARS-CoV virus. SARS-CoV-
40 2-specific NAbs were detected in patients from day 10-15 after the onset of the disease
41 and remained thereafter. The titers of NAb among these patients correlated with the
42 spike-binding antibodies targeting S1, RBD, and S2 regions. The titers of NAbs were
43 variable in different patients. Elderly and middle-age patients had significantly higher
44 plasma NAb titers ($P < 0.0001$) and spike-binding antibodies ($P = 0.0003$) than young
45 patients. Notably, among these patients, there were ten patients whose NAb titers were
46 under the detectable level of our assay ($ID_{50} < 40$); while in contrast, two patients,
47 showed very high titers of NAb, with $ID_{50} : 15989$ and 21567 respectively. The NAb
48 titers were positive correlated with plasma CRP levels but negative correlated with the
49 lymphocyte counts of patients at the time of admission, indicating an association
50 between humoral response and cellular immune response.

51

52 **Interpretation**

53 The variations of SARS-CoV-2 specific NAbs in recovered COVID-19 patients may
54 raise the concern about the role of NAbs on disease progression. The correlation of
55 NAb titers with age, lymphocyte counts, and blood CRP levels suggested that the
56 interplay between virus and host immune response in coronavirus infections should be
57 further explored for the development of effective vaccine against SARS-CoV-2 virus.
58 Furthermore, titration of NAb is helpful prior to the use of convalescent plasma for
59 prevention or treatment.

60

61 **Funding**

62 Ministry of Science and Technology of China, National Natural Science Foundation of
63 China, Shanghai Municipal Health Commission, and Chinese Academy of Medical
64 Sciences

65

66

67

68 **Introduction**

69 The outbreak of coronavirus disease 2019 (COVID-19) in December 2019 has spread
70 around the world and become a global pandemic.¹ The etiological agent of COVID-19
71 was identified as a SARS-related coronavirus designated as SARS-CoV-2
72 coronavirus.^{2,3} As of March 27, 2020, it had caused a total of 509,164 cases of infection
73 and resulted in 23,335 deaths worldwide.¹ About 81% of infected patients showed only
74 mild symptoms, but 14% of them had severe symptoms such as dyspnea, high
75 respiratory frequency and low blood oxygen saturation. Another 5% of patients,
76 especially those over 60, or with comorbidities, progressed to critical condition. About
77 3.4% of patients died from respiratory failure or multiple organ failure.⁴ Although the
78 estimated mortality rate of COVID-19 was lower than SARS and MERS, the number
79 of deaths associated with COVID-19 has already surpassed those of SARS and MERS
80 owing to the extremely high transmissibility of SARS-CoV-2 coronavirus. Currently,
81 no licensed vaccine or drugs are available to prevent or treat COVID-19 infection, and
82 most infected patients have been treated with supportive care.

83

84 Neutralizing antibodies (NAbs) play important roles in virus clearance and have been
85 considered as a key immune product for protection or treatment against viral diseases.
86 Virus-specific NAbs, induced through either infection or vaccination, have the ability
87 to block viral infection. The level of NAbs has been used as a gold standard to evaluate
88 the efficacy of vaccines against smallpox, polio and influenza viruses.⁵ Passive
89 antibody therapy, such as plasma fusion, was successfully used to treat infectious viral
90 diseases, including SARS-CoV virus,⁶ influenza viruses,⁷ and Ebola virus.⁸ The
91 efficacy of passive antibody therapy was associated with the concentration of NAbs in
92 plasma or antibodies of recovered donors.⁸ As the global pandemic of COVID-19
93 proceeds, transfusion of convalescent plasma or serum from recovered patients was also
94 considered as a promising therapy for prophylaxis of infection or treatment of disease.⁹
95 However, the levels and roles of SARS-CoV-2-specific NAbs in patients with COVID-
96 19 have not been reported.

97

98 Here, we used a pseudotyped-lentiviral-vector-based neutralization assay to measure
99 SARS-Cov-2-specific NAbs in plasma from recovered COVID-19 patients with mild
100 symptoms. The pseudovirus (PsV) neutralization assay is a sensitive and reproducible
101 assay. It does not produce any highly pathogenic virus, and it can be safely handled in
102 a biosafety level 2 facility. Herein, we aimed to explore the clinical characteristics
103 associated with the level of NAbs in recovered patients, the outcome of which may
104 provide useful information for the development of vaccines and passive antibody
105 therapy for the prevention and treatment of SARS-CoV-2.

106

107 **Methods**

108 **Study design and participants**

109 The study included a cohort of 175 adult COVID-19 patients admitted to Shanghai
110 Public Health Clinical Center. The study was conducted under a clinical protocol
111 approved by the Investigational Review Board in the Shanghai Public Health Clinical
112 Center (Study number: YJ-2020-S021-01). All participants signed an informed consent
113 approved by the IRB. All patients were diagnosed with laboratory-confirmed COVID-
114 19 and discharged after meeting effective national treatment standards. Clinical
115 information, including complete blood counts, blood biochemistry was collected at the
116 time of admission.

117

118 **Materials**

119 293T cells expressing human angiotensin converting enzyme II (ACE2) (293 T/ACE2)
120 were obtained from the American Type Culture Collection (ATCC; Manassas, VA, USA)
121 and were cultured in Dulbecco's modified Eagle's medium (DMEM) with 10% fetal
122 bovine serum (FBS). The three domains of SARS-CoV-2 spike (S) protein, including
123 S1 and S2 subunits, as well as RBD, were purchased from Sino Biological Company
124 (Beijing, China). The expression plasmids for SARS S protein pcDNA3.1-SARS-S
125 (ABD72979.1) and SARS-CoV-2 S protein pcDNA3.1-SARS-CoV-2-S (NC_045512)
126 were synthesized by Genscript. The VSV-G envelope eukaryotic expression vector
127 pHEF-VSVG and the HIV-1 Env-deficient luciferase reporter vector pNL4-3. Luc. R-
128 E- were obtained through the NIH AIDS Reagent Program.

129

130 **Neutralization assay**

131 Neutralization activity of plasma from COVID-19 patients was measured using a
132 single-round PsV infection of 293 T/ACE2 cells. PsVs of SARS-CoV-2, SARS-CoV
133 and VSV-G virus were generated by co-transfection of 293T cells with pNL4-
134 3.Luc.R-E- backbone and viral envelope protein expression plasmids pcDNA3.1-
135 SARS-CoV-2-S, pcDNA3.1-SARS-S or pHEF-VSVG. PsVs could infect the same cells
136 as those infected by SARS-CoV-2 or SARS-CoV viruses.^{10,11} The neutralization assay
137 was performed in accordance with the following steps. First, 293 T/ACE2 cells were
138 seeded in a 96-well plate at a concentration of 10^4 cells per well and cultured for 12
139 hours. Then, ten μ l heat-inactivated plasma were five-fold serially diluted with DMEM
140 with 10% FBS and mixed with 40 μ l of PsV. The mixture was added to cultured
141 293 T/ACE2 for infection. The culture medium was refreshed after 12 hours and
142 incubated for an additional 48 hours. Assays were developed with a luciferase assay
143 system (Promega), and the relative light units (RLU) were read on a luminometer
144 (Perkin Elmer). The titers of NAbS were calculated as 50% inhibitory dose (ID50),
145 expressed as the highest dilution of plasma which resulted in a 50% reduction of
146 luciferase luminescence compared with virus control.

147

148 **ELISA**

149 SARS-CoV-2 RBD, S1, or S2 protein and SARS-CoV RBD or S1 protein (1 µg/ml)
150 was coated on a MaxiSorp Nunc-immuno 96-well plate overnight at 4 °C. Wells were
151 blocked with 5% nonfat milk in PBS for 1 hour at room temperature, followed by
152 incubation with 1:400 diluted sera or serially diluted sera in disruption buffer (PBS, 5%
153 FBS, 2% BSA, and 1% Tween-20) for 1 hour at room temperature. A 1:2500 dilution
154 of horseradish peroxidase (HRP)-conjugated goat anti-human IgG antibody was added
155 for 1 hour at room temperature. Wells were washed five times between each step with
156 0.2% Tween-20 in PBS. Wells were developed using ABST (Thermo) and read at 405
157 nm.

158

159 **Statistical analysis**

160 Statistical analyses were carried out using GraphPad Prism 7.0. Data are indicated as
161 medians. Differences between nominal data were tested for statistical significance by
162 use of paired or unpaired *t* test. Correlations were calculated using standard Pearson
163 correlation.

164

165 **Role of the funding source**

166 The funders of the study had no role in study design, data collection, data analysis, data
167 interpretation, or writing of the report. The corresponding author had full access to all
168 the data in the study and had final responsibility for the decision to submit for
169 publication.

170

171 **Results**

172 **Clinical Characteristics**

173 A total of 175 COVID-19 patients had recovered and were discharged from the
174 Shanghai Public Health Clinical Center as of February 26, 2020. Their symptoms were
175 common or mild, and none of them was admitted to the ICU. The median age of the
176 patients was 50 years (ranging from 16 to 85 years); 53 % of the patients were female.
177 The median length of hospital stay was 16 days (ranging from 7 to 30 days), and the
178 median disease duration was 21 days (9 to 34 days).

179

180 **Convalescent plasma from COVID-19 patients specifically inhibited SARS-CoV-**
181 **2, but not SARS-CoV infection**

182 We collected five plasma samples from COVID-19 patients at the time of discharge and
183 measured their neutralizing titers against SARS-CoV-2 infection of 293T/ACE2 cells.
184 All five plasma showed a concentration-dependent inhibition of SARS-CoV-2 PsV

185 infection of 293T/ACE2 cells (Figure 1A). Plasma with high titers of NABs showed
186 higher titers of SARS-CoV-2 RBD, S1, and S2-specific binding antibodies (Figure 1B).
187 Moreover, plasma from these patients also showed cross-binding to SRAS-CoV RBD
188 and S1 regions (Figure 1C), but the binding to SARS-CoV S protein was not consistent
189 with that to SARS-CoV-2 S protein. Furthermore, plasma from COVID-19 patients
190 could not inhibit SARS-CoV infection in PsV neutralization assay. 26 plasma samples
191 from COVID-19 patients, which showed strong SARS-CoV-2 neutralizing activities
192 (Figure 1D), could neither neutralize SARS-CoV PsV infection nor the control VSV-G
193 PsV infection (Figure 1E). These results suggest that SARS-CoV-2 was able to
194 stimulate SARS-CoV cross-binding antibodies. However, it was unable to induce the
195 cross-neutralizing antibodies against SARS-CoV. These results suggested that the
196 epitope or immunogenicity between SARS-CoV-2 and SARS-CoV were different.

197

198 **COVID-19 patients generated SARS-CoV-2-specific NABs and spike-binding** 199 **antibodies concurrently from day 10 to 15 after infection**

200 We monitored the kinetics of SARS-CoV-2-specific NAB development during the
201 course of disease. The titers of NABs were evaluated in plasma collected from six
202 patients at different time points after the disease onset. The kinetics of NABs
203 development were similar among patients. The titers of NABs in all patients were low
204 (ID50: < 200) before day 10 post-disease onset and then increased at day 10 to 15 post-
205 disease onset, remaining stable thereafter (Figure 2A). We also measured the binding
206 antibodies to the different domains (RBD, S1, and S2) of SARS-CoV-2 spike protein
207 in the plasma of these six patients. The kinetics of NABs (right Y axis) and binding
208 antibodies targeting RBD, S1, and S2 domains (left Y axis) were aligned with individual
209 patients (Figure 2B). We evaluated the SARS-CoV-2-specific NABs titers and the spike-
210 binding antibody levels in the plasma of 175 recovered patients on the day of discharge.
211 We observed that SARS-CoV-2-specific NABs titers moderately correlated with spike-
212 binding antibodies targeting RBD ($r=0.51$, $p<0.0001$), S1 ($r=0.42$, $p<0.0001$), and S2
213 ($r=0.435$, $p<0.0001$) (Figure 2C). These results suggested that humoral immune
214 responses of COVID-19 patients against SARS-CoV-2 occurred on day 10 to 15 after
215 infection. Besides RBD region, S2 domain might be the target of SARS-CoV-2-NABs.
216 Since binding antibodies may also play a role in viral clearance through antibody-
217 dependent phagocytosis or antibody-dependent cellular cytotoxicity, the effect of NABs
218 and binding antibodies on disease progression is worth comprehensive evaluation in
219 further study.

220

221 **About 30% of recovered patients generated very low titers of SARS-CoV-2-** 222 **specific NABs**

223 We observed that NAB titers were variable in the plasma of 175 recovered patients.
224 ID50s ranged from below detection limit (<40) to 21567 (Figure 3A). About 30% of
225 recovered patients generated a very low level of NAB titers (ID50: < 500) (Figure 3A,

226 3B, and Supplementary Table 1), and NAb titers in ten of them were below the limit of
227 detection (ID50: <40), though all of them were lab confirmed infected with SARS-
228 CoV-2 (Supplementary Table 2). About 17%, 39%, and 14% showed medium-low
229 (ID50: 500-999), medium-high (ID50: 1000-2500), and high (ID50: > 2500) NAb titers,
230 respectively (Figure 3B). We also collected and measured the levels of NAb in plasma
231 from 47 of the 175 patients during the follow-up examination two weeks after discharge.
232 As shown in Figure 3C, NAb plasma titers collected at the time of follow-up
233 examinations did not significantly differ from those collected at the time of discharge
234 ($P=0.250$, paired- t test). Patients who did not generate NAb at the time of discharge
235 did not develop NAb thereafter. These results revealed that a proportion of patients
236 infected with SARS-CoV-2 would recover without developing high titers of virus-
237 specific NAb. How these patients recovered without the help of NAb and whether
238 they were at risk of re-infection of SARS-CoV-2 should be further explored. Titration
239 of NAb is helpful prior to the use of convalescent plasma for prevention or treatment.

240

241 **Elderly and middle-age recovered COVID-19 patients developed higher levels of** 242 **SARS-CoV-2-specific NAb**

243 We observed that elderly patients were more likely to induce higher titers of NAb than
244 younger patients. As shown in Figure 4A, the patients were divided into three groups
245 based on their age, young (15-39 years), middle-age (40-59 years) and elderly (60-85
246 years). Patient numbers from each group were similar (55, 64 and 56) (Supplementary
247 Table 3). NAb titers of elderly and middle-age recovered patients were significantly
248 higher than those of young recovered patients ($p<0.0001$ and $p<0.0001$, t test) (Figure
249 4A), and the corresponding median ID50s were 1537, 1255, and 488, respectively
250 (Figure 4A). A moderate positive correlation was also observed between age and NAb
251 titers ($r=0.436$, $P<0.001$, Pearson) (Figure 4C), confirming the important role of age in
252 the generation of NAb. Elderly and middle-age recovered patients had significantly
253 higher levels of spike-binding antibodies, targeting RBD ($p<0.0001$ and $p=0.0094$, t
254 test), S1 ($p=0.0003$ and $p=0.0035$, t test), and S2 ($p=0.0003$ and $p=0.0019$, t test) than
255 those of young recovered patients (Figure 4C). However, no difference was observed
256 between patients' ages and the length of stay in hospital (Figure 4D). These results
257 indicated that high level of NAb might be useful to clear the viruses and helpful for
258 the recovery of elderly and middle-age patients.

259

260 **COVID-19 recovered patients age and SARS-CoV-2-specific NAb titers** 261 **negatively correlated with lymphocyte count and positively correlated with CRP** 262 **levels on admission**

263 Older age was usually associated with poor outcome among COVID-19 patients¹².
264 Consistent with the previous reports, the elderly and middle-age patients in this cohort
265 had lower lymphocyte counts ($r= -0.389$, $p<0.0001$, Figure 5A left) and higher CRP
266 level ($r= -0.432$, $p<0.0001$, Figure 5A right) than young patients on admission (Figure

267 5A left and right). However, none of the patient progressed into severe conditions, and
268 no significant difference was observed between age and length of hospital stay among
269 these patients (Figure 4D). Interestingly, we observed that the NAb titers negatively
270 correlated with blood lymphocyte counts ($r = -0.44$, $p < 0.0001$, Figure 5B left) and
271 positively correlated with blood CRP levels ($r = 0.5$, $p < 0.0001$, Figure 5B right),
272 suggesting that the humoral response might play an important role when cellular
273 response was dysfunction or impaired.

274

275 Discussion

276 Spread of the COVID-19 global pandemic highlights the urgent need to develop
277 effective treatments or vaccines against SARS-CoV-2 infection. NABs have been
278 considered as an effective drug to treat or prevent virus infection. Here we evaluated
279 the level of NABs in recovered patients of COVID-19 by using a PsVs neutralization
280 assay, which has been extensively used for the evaluation of NABs for many highly
281 pathogenic viruses, including Ebola,¹³ highly pathogenic influenza virus,^{14,15} SARS-
282 CoV,¹⁶ and MERS-CoV.¹⁷ The PsVs neutralization assay was also used for the
283 evaluation of NABs for SARS-CoV-2 in some recent reports,^{11,18,19} generating
284 consistent results compared with traditional plaque reduction neutralization assay.¹⁸

285 We found that most COVID-19 patients developed SARS-CoV-2-specific NABs at the
286 convalescent phase of infection. The titers of NABs reached their peak at 10 to 15 days
287 after disease onset and remained stable thereafter in patients. Antibodies targeting on
288 different domains of S protein, including S1, RBD and S2, may all contribute to the
289 neutralization.

290 Conserved epitopes may exist between SARS-CoV-2 and SARS-CoV since they share
291 77.2% identical amino acids in their spike proteins.² Few reports have demonstrated
292 that SARS-CoV-specific monoclonal NABs could cross-neutralize SARS-CoV-2 PsV
293 infection,^{3,11,18} Even though plasma from COVID-19 patients showed cross-binding to
294 SARS-Cov, they did not neutralize SARS-CoV, indicating that the antigenicity of
295 SARS-CoV-2 is different from that of SARS-CoV. Evidence deduced from this study
296 only suggested that cross-neutralizing antibodies targeted the conserved epitopes of
297 SARS-CoV and SARS-CoV-2 may not be easily elicited during the infection of
298 COVID-19, making this a potential line of advanced study.

299 It is also noteworthy that the levels of NABs in patients were variable. About 30% of
300 patients failed to develop high titers of NABs after COVID-19 infection. However, the
301 disease duration of these patients compared to others was similar. Notably, there were
302 ten recovered patients whose NAB titers were very low, under the detectable level of
303 this study (ID50: < 40), suggesting that other immune responses, including T cells or
304 cytokines, may contribute to the recovery of these patients. Whether these patients were
305 at high risk of rebound or reinfection should be explored in further studies. On the other
306 hand, two patients had very high titer of NABs, which were over ID50: 15989 and 21567
307 respectively, but did not show any antibody-related adverse reactions.

308 The NAbs titers in patients were also observed to be correlated with the age of the
309 patients. Elderly patients had significantly higher titers of NAbs than younger patients.
310 Age has been reported as an important predictor of adverse disease outcome after
311 infection with coronavirus, including SARS-CoV²⁰, MERS-CoV²¹ and SARS-CoV²².
312 Previous studies in SARS-CoV-infected macaques revealed that aged macaques
313 induced elevated innate immune response, resulting in more severe pathology than
314 young adult macaques²². The elderly patients in this cohort also had higher blood CRP
315 level and lower lymphocyte counts at the time of admission, indicating the induction of
316 stronger innate immune response than younger patients. High level of NAbs may be a
317 result of strong immune response in these elderly patients. Whether the high level of
318 NAbs protect these patients from progression into severe and critical conditions is
319 worthy of comprehensive evaluation. Further study of the immunological
320 characteristics of COVID-19 patients may reveal key determinants in the generation of
321 NAbs and effective cell-mediated immune responses, which is important for the
322 development of an effective vaccine against SARS-CoV-2 virus.

323 This study is preliminary and has several limitations. First, viral RNA was not
324 detectable in patients' blood. Owing to the lack of respiratory specimens, information
325 about the kinetics of viral loads was not available. Second, patients in severe and critical
326 condition were excluded from the study because they received passive antibody
327 treatment before sample collection. Thus, we were not able to directly evaluate the
328 effect of NAbs on virus clearance or disease progression of COVID-19 patients in this
329 study. A further comprehensive study should be made to address the question.

330 To the best of our knowledge, this is the first report about NAbs drawn from the plasma
331 of a COVID-19 recovered patient cohort, potentially providing useful information for
332 passive antibody therapy and vaccine development against SARS-CoV-2 virus. The
333 highly variable levels of NAbs in the patients of COVID-19 indicated that convalescent
334 plasma and serum from recovered donors should be titrated before use in passive
335 antibody therapy, an easy task that can be performed using the PsV neutralization assay.
336 Correlation of NAbs titers with the age, lymphocyte counts and blood CRP levels of
337 patients also lays the groundwork for further study to explore the mechanism of NAbs
338 development in COVID-19 patients.

339

340 **Declaration of interests**

341 We declare no competing interests.

342

343

344 **Contributions**

345 JH, FW, and YW conceived and designed the experiments. JH, FW, AW, ML, QW, and
346 YZ performed the experiments. JH, FW, SX, and LL constructed the SARS-CoV-2 PsV
347 plasmid. FW, JH, HL, JC, YL, QW, and JX collected the samples of recovered patient
348 and clinical information. JH, FW, YW, and SJ analyzed the data and wrote the
349 manuscript.

350

351 **Acknowledgments**

352 We want to particularly acknowledge Dr. Shan Lu for reviewing the manuscript. This
353 work was supported by the National Major Science and Technology Projects of China
354 (2017ZX10202102 and 2018ZX10301403), National Natural Science Foundation of
355 China (31771008), Hundred Talent Program of Shanghai Municipal Health
356 Commission (2018BR08), and Chinese Academy of Medical Sciences
357 (2019PT350002).

358

359 **References**

- 360 1. World Health Organization. Coronavirus disease 2019 (COVID-19) Situation
361 Report. [https://www.who.int/emergencies/diseases/novel-coronavirus-2019/situation-](https://www.who.int/emergencies/diseases/novel-coronavirus-2019/situation-reports/)
362 [reports/](https://www.who.int/emergencies/diseases/novel-coronavirus-2019/situation-reports/). Accessed on March 27,2020.
- 363 2. Wu F, Zhao S, Yu B, et al. A new coronavirus associated with human respiratory
364 disease in China. *Nature* 2020; **579**(7798): 265-9.
- 365 3. Zhou P, Yang XL, Wang XG, et al. A pneumonia outbreak associated with a new
366 coronavirus of probable bat origin. *Nature* 2020; **579**(7798): 270-3.
- 367 4. Wu Z, McGoogan JM. Characteristics of and Important Lessons From the
368 Coronavirus Disease 2019 (COVID-19) Outbreak in China: Summary of a Report of
369 72314 Cases From the Chinese Center for Disease Control and Prevention. *JAMA*.
370 2020 Feb 24. doi: 10.1001/jama.2020.2648.
- 371 5. Zinkernagel RM. On natural and artificial vaccinations. *Annu Rev Immunol* 2003;
372 21: 515-46.
- 373 6. Wong VW, Dai D, Wu AK, Sung JJ. Treatment of severe acute respiratory
374 syndrome with convalescent plasma. *Hong Kong Med J* 2003; **9**(3): 199-201.
- 375 7. Zhou B, Zhong N, Guan Y. Treatment with convalescent plasma for influenza A
376 (H5N1) infection. *N Engl J Med* 2007; **357**(14): 1450-1.
- 377 8. van Griensven J, Edwards T, de Lamballerie X, et al. Evaluation of Convalescent
378 Plasma for Ebola Virus Disease in Guinea. *N Engl J Med* 2016; **374**(1): 33-42.
- 379 9. Casadevall A, Pirofski LA. The convalescent sera option for containing COVID-19.
380 *J Clin Invest* 2020 Mar 13. pii: 138003. doi: 10.1172/JCI138003.
- 381 10. Nie Y, Wang G, Shi X, et al. Neutralizing antibodies in patients with severe acute
382 respiratory syndrome-associated coronavirus infection. *J Infect Dis*. 2004 Sep
383 15;190(6):1119-26.
- 384 11. Hoffmann M, Kleine-Weber H, Schroeder S, et al. SARS-CoV-2 Cell Entry
385 Depends on ACE2 and TMPRSS2 and Is Blocked by a Clinically Proven Protease
386 Inhibitor. *Cell*. 2020 Mar 4. pii: S0092-8674(20)30229-4. doi:
387 10.1016/j.cell.2020.02.052.
- 388 12. Zhou F, Yu T, Du R, et al. Clinical course and risk factors for mortality of adult
389 inpatients with COVID-19 in Wuhan, China: a retrospective cohort study. *Lancet*. 2020
390 Mar 11. pii: S0140-6736(20)30566-3.
- 391 13. Ilinykh PA, Shen X, Flyak AI, et al. Chimeric Filoviruses for Identification and
392 Characterization of Monoclonal Antibodies. *J Virol*. 2016 Mar 28;90(8):3890-3901.

- 393 14. Temperton NJ, Hoschler K, Major D, et al. A sensitive retroviral pseudotype assay
394 for influenza H5N1-neutralizing antibodies. *Influenza Other Respir Viruses*. 2007
395 May;1(3):105-12.
- 396 15. Qiu C, Huang Y, Zhang A, et al. Safe pseudovirus-based assay for neutralization
397 antibodies against influenza A(H7N9) virus. *Emerg Infect Dis*. 2013;19(10):1685-7.
- 398 16. Nie Y, Wang G, Shi X, et al. Neutralizing antibodies in patients with severe acute
399 respiratory syndrome-associated coronavirus infection. *J Infect Dis*. 2004 Sep
400 15;190(6):1119-26.
- 401 17. Lan J, Yao Y, Deng Y, et al. Recombinant receptor binding domain protein induces
402 partial protective immunity in rhesus macaques against Middle East respiratory
403 syndrome coronavirus challenge. *EBio Medicine* 2015; 2: 1438–1446.
- 404 18. Wang CY, Lia WT, Drabek D, et al. A human monoclonal antibody blocking SARS-
405 CoV-2 infection. *bioRxiv* 2020 Mar 12 <https://doi.org/10.1101/2020.03.11.987958>.
- 406 19. Liu Z, Xia S, Wang X, et al. Inefficiency of Sera from Mice Treated With
407 Pseudotyped SARS-CoV to Neutralize 2019-nCoV Infection. *Viol Sin*, 2020 DOI:
408 10.1007/s12250-020-00214-5
- 409 20. Peiris JS1, Chu CM, Cheng VC, et al. Clinical progression and viral load in a
410 community outbreak of coronavirus-associated SARS pneumonia: a prospective study.
411 *Lancet*. 2003 May 24;361(9371):1767-72.
- 412 21. Hong K-H, Choi J-P, Hong S-H, et al: Predictors of mortality in Middle East
413 respiratory syndrome (MERS). *Thorax* 2018; 73: pp. 286-289
- 414 22. Smits SL, de Lang A, van den Brand JMA, et al: Exacerbated innate host response
415 to SARS-CoV in aged non-human primates. *PLoS Pathog* 2010; 6: pp. e1000756-e
416
417
418
419
420

421 **Figure legends**

422 **Figure 1. Plasma from COVID-19 recovered patients specifically inhibited SARS-CoV-2 infection**
423 **but not SARS-CoV virus.** (A) Plasma from five COVID-19 recovered patients inhibited infection of
424 SARS-CoV-2. Plasma from a healthy donor was used as a negative control. The assay was performed in
425 duplicate and the median percentage of neutralization is shown. (B) Biding of COVID-19 recovered
426 patient plasma to SARS-CoV-2 RBD, S1, and S2 proteins. (C) Biding of COVID-19 recovered patient
427 plasma to SARS-CoV RBD and S1 proteins. (D) The SARS-CoV-2 NAbs titers of 26 plasma from
428 COVID-19 recovered patients were compared with 13 plasma from healthy donors. P value was
429 calculated using *t* test. (E)The titers of NAbs against VSV, SARS-CoV, and SARS-CoV-2 PsV in 26
430 COVID-19 recovered patient plasma were compared. P values were calculated using *t* test.

431
432 **Figure 2. SARS-CoV-2-specific NAbs and spike-binding antibodies emerged concurrently on day**
433 **10-15 during the COVID-19 disease progression and shown correlation.** (A) Kinetics of SARS-CoV-
434 2 NAbs titers in six COVID-19 patients are shown. Plasma were collected at different time points post
435 syndrome onset. (B) Kinetics of spike binding antibodies (left Y axis), targeting RBD (blue), S1 (green),

436 and S2 (brown), in six COVID-19 patient plasma are shown and compared with the kinetics of NAb
437 titers (right Y axis, red) in the same patient. (C) The correlations between the SARS-CoV-2 NAb titers
438 and RBD, S1, or S2 binding antibodies levels of patients were analyzed by Pearson correlation test. 1:400
439 diluted plasma was incubate with RBD, S1, or S2 protein.

440

441 **Figure 3. COVID-19 recovered patients developed variable levels of SARS-CoV-2 specific NAb.**
442 (A) SARS-CoV-2 NAb titers (ID50) of 175 COVID-19 recovered patient plasma collected on the day of
443 discharge were measured in a PsV neutralization assay. (B) Percentages of patients with low (ID50: <500),
444 medium-low (ID50: 500-999), medium-high (ID50: 1000-2500), and high (ID50: >2500) titers of SARS-
445 CoV-2-specific NAb are shown. (C) NAb titers of 47 COVID-19 recovered patient plasma collected
446 on the day of discharge and the subsequent visit in two weeks were compared. P value was calculated
447 using *t* test.

448

449 **Figure 4. Elderly and middle-age recovered COVID-19 patients developed higher levels of SARS-
450 CoV-2-specific NAb than young recovered patients.** (A) NAb titers of young (15-39 years), middle-
451 age (40-59 years), and elderly (60-85 years) patients were compared. P values were calculated using *t*
452 test. (B) The correlation between ages of patients and the titers of SARS-CoV-2-specific NAb was
453 analyzed by Pearson correlation test. (C) RBD, S1, or S2 binding antibodies levels of young, middle-age,
454 and elderly recovered COVID-19 patients were compared. P values were calculated using *t* test.

455

456 **Figure 5. Age and SARS-CoV-2-specific NAb levels negatively correlated with lymphocyte count
457 and positively correlated with CRP levels of patients on the time admission.**

458 (A) The correlations between patient age and lymphocyte counts (left) or C-reactive protein (CRP) level
459 (right) on admission were analyzed by Pearson correlation test. (B) Correlations between SARS-CoV-2-
460 specific NAb titers and lymphocyte count (left) or CRP level (right) of patients were analyzed by Pearson
461 correlation tests. The reference range for lymphocyte counts is $1.1-3.2 \times 10^9$ /L and for blood CRP is less
462 than 3mg/L.

463

464

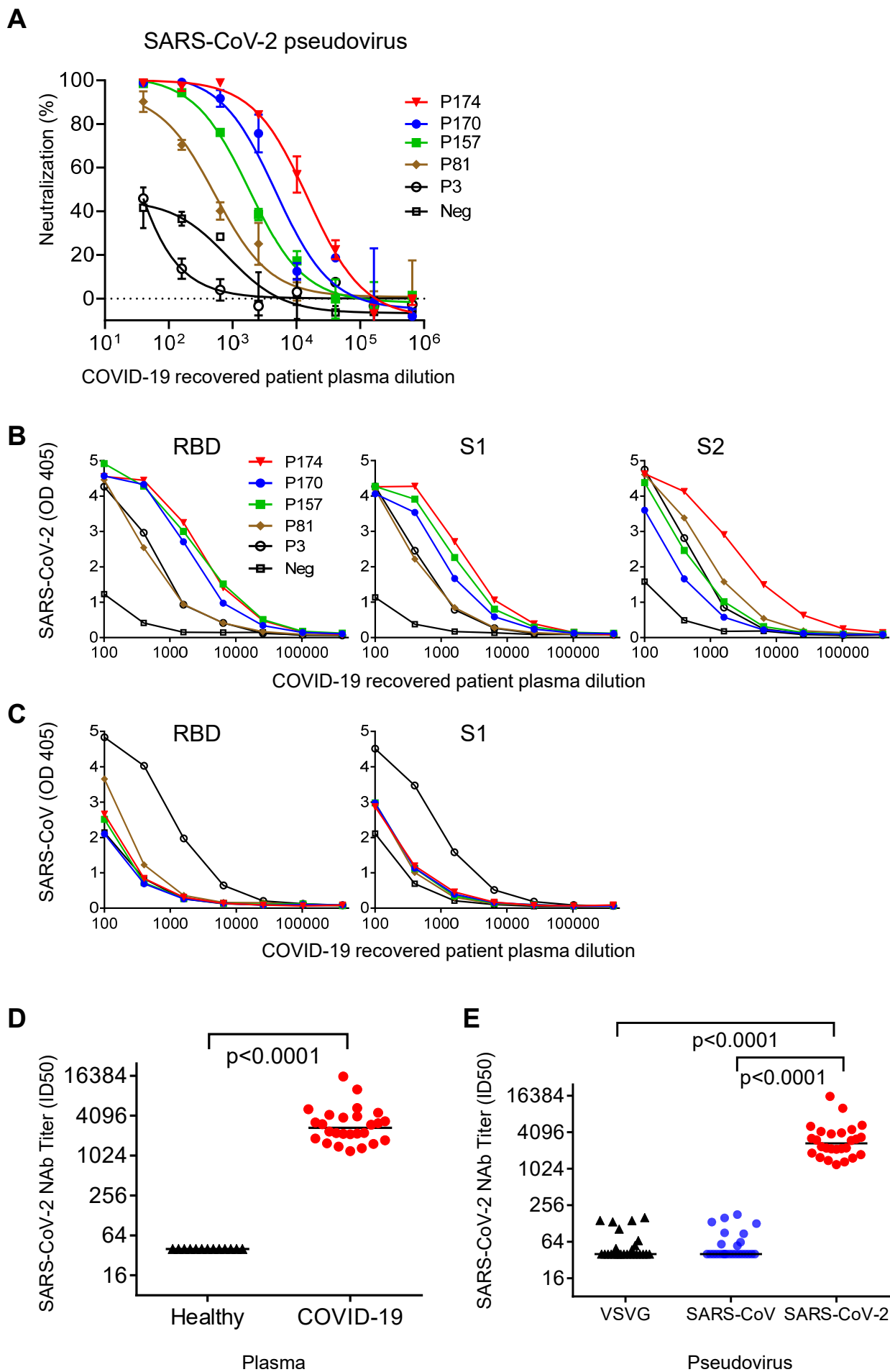
465

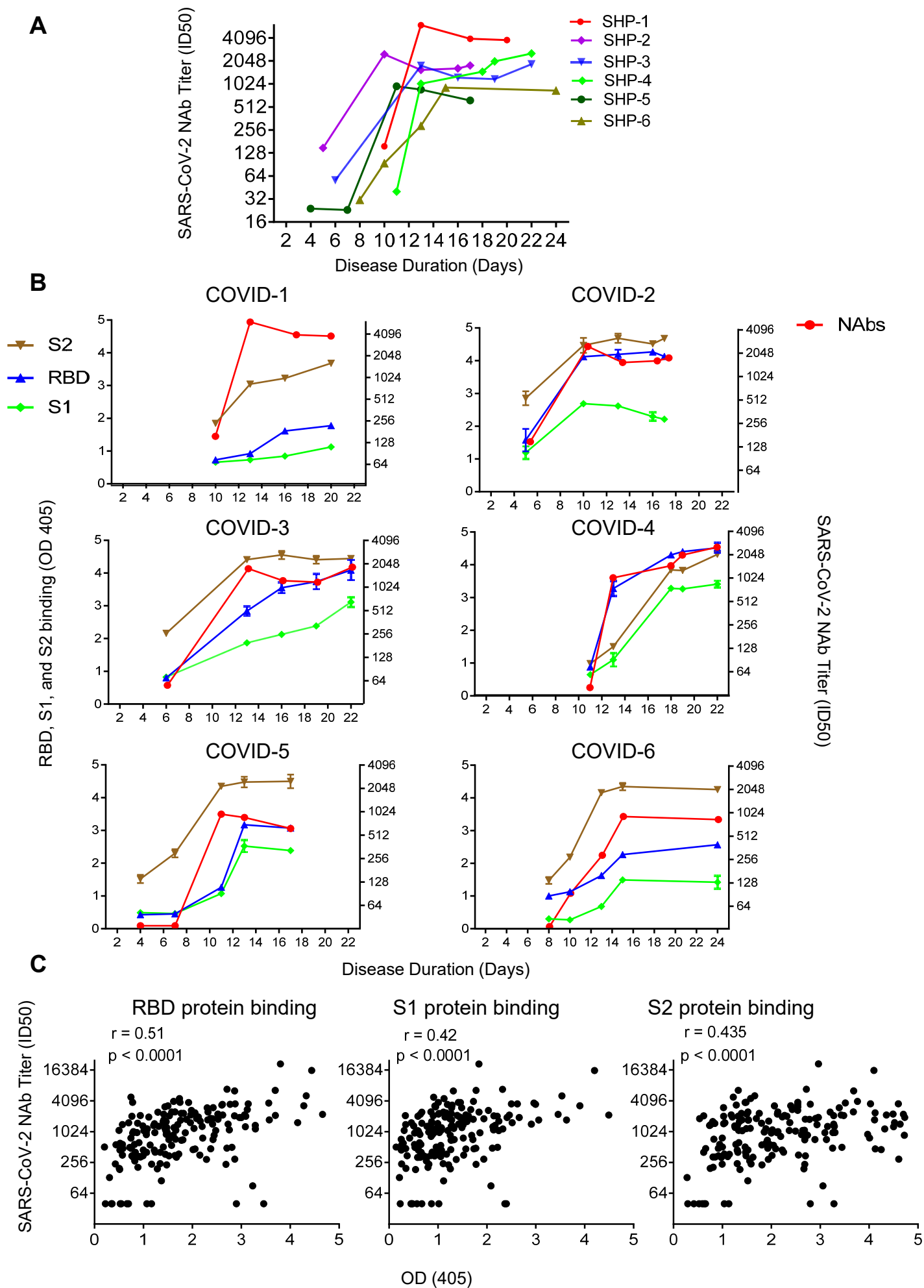
466

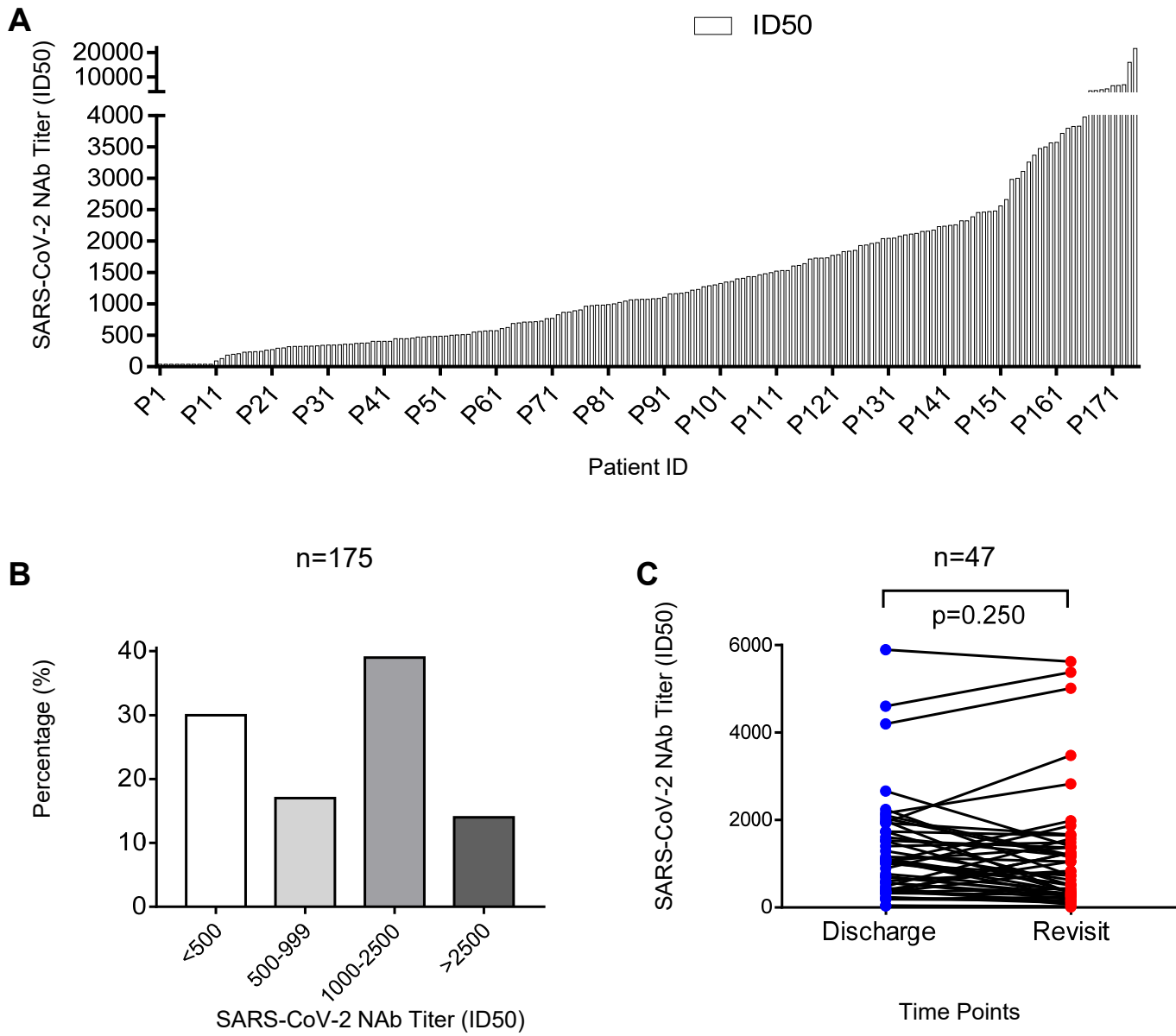
467

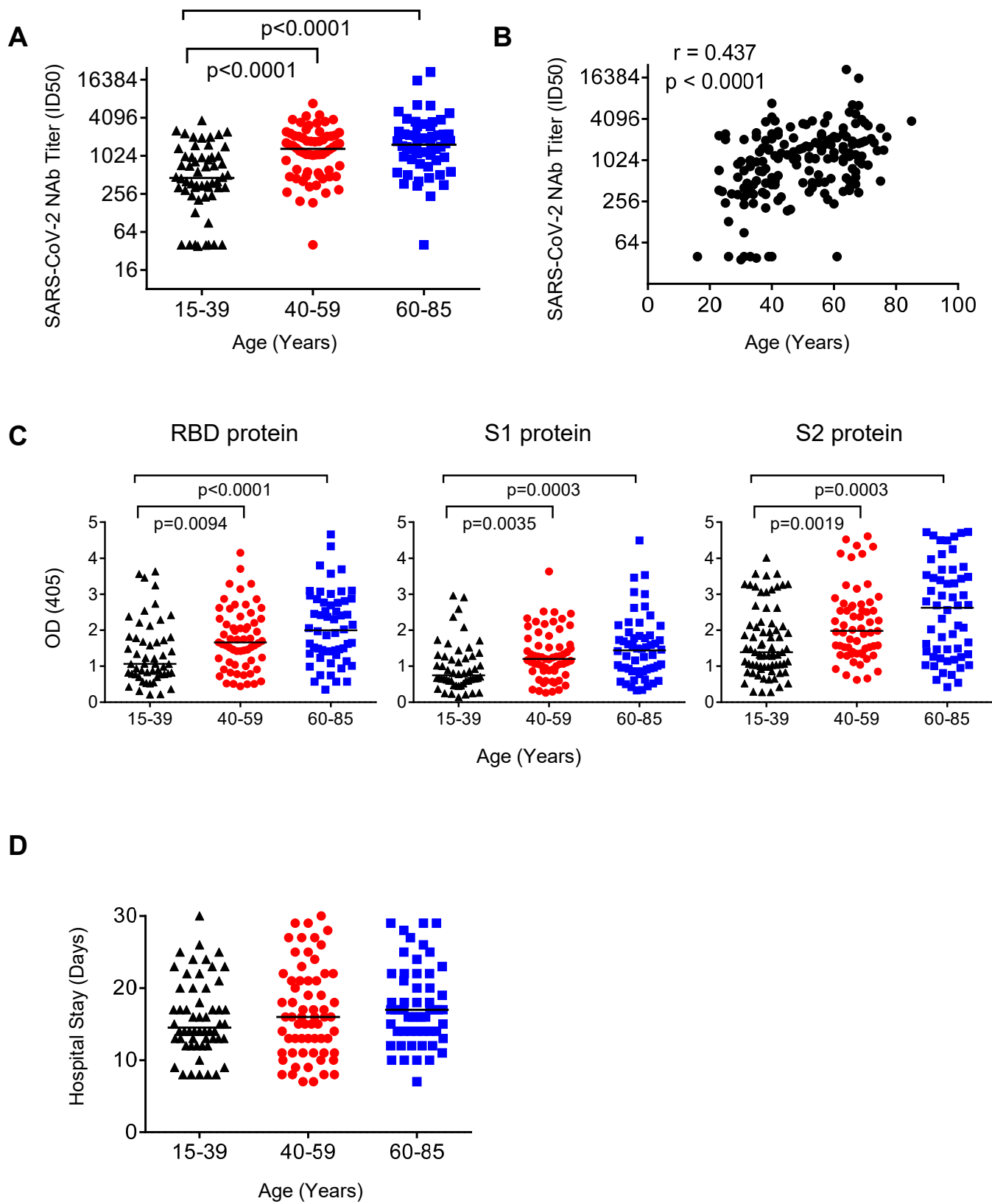
468

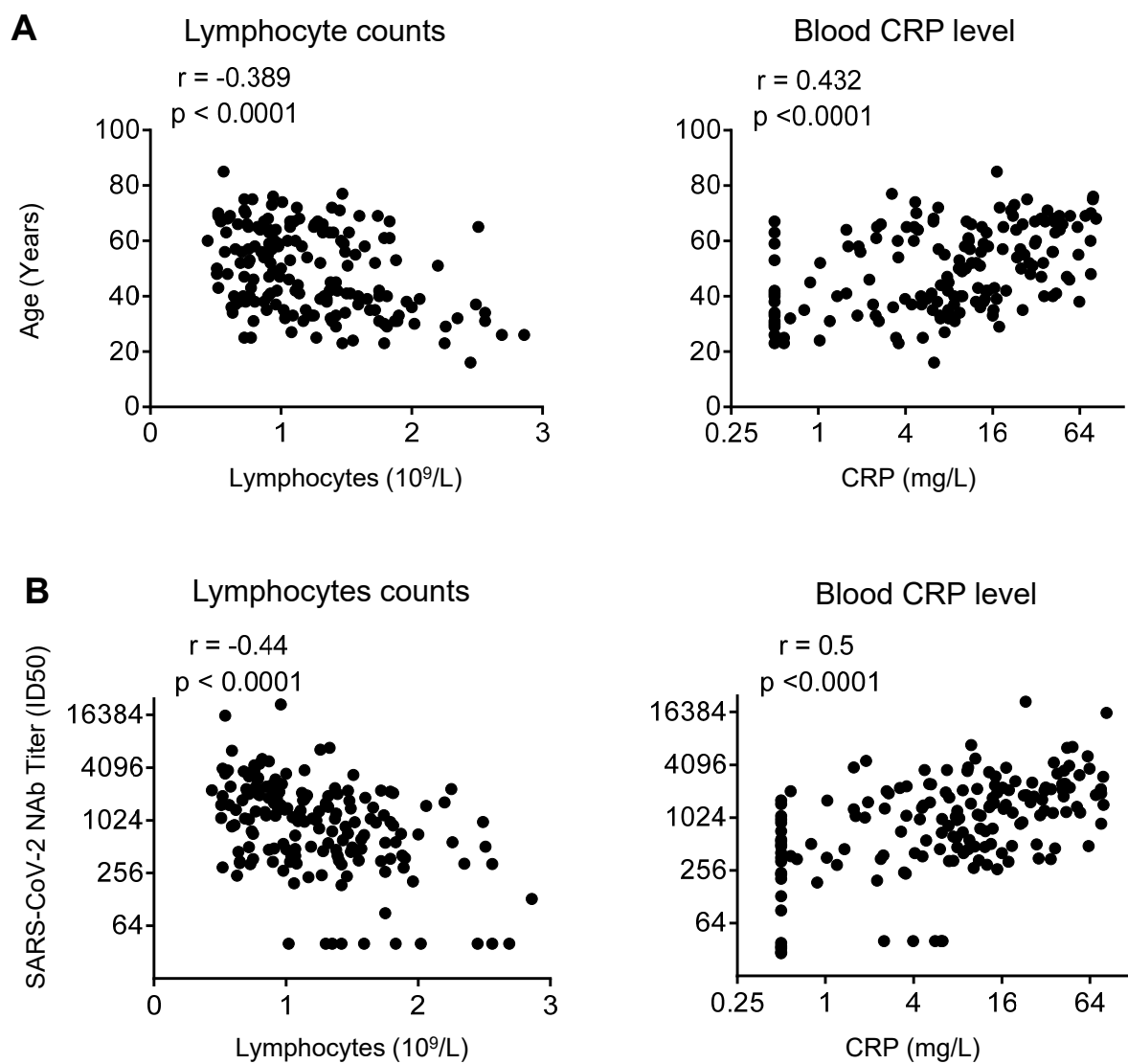
469











Supplementary Table 1. Clinical characteristics of COVID-19 recovered patients with low, medium- low, medium-high, and high titers of SARS-CoV-2-specific NAb

Patient Information	Low^a	Medium-low^a	Medium-high^a	High^a
	<500	500-999	1000-2500	>2500
Recovered Patient No.	52 (30%)	29 (17%)	69 (39%)	25 (14%)
Male	19 (23%)	13 (16%)	36 (44%)	14 (17%)
Female	33 (35%)	16 (17%)	33 (35%)	11 (12%)
Median Age (Years)	38 (16-68)	42 (23-75)	56 (23-77)	63 (35-85)
Length of Stay (Days)	14.5 (8-29)	15 (7-28)	16 (8-30)	18 (10-29)
Disease Duration (Days)	20 (9-33)	21 (16-31)	22 (11-34)	23 (13-32)
Median NAb titers (ID50)	327 (40-488)	715 (504-989)	1642 (1004-2482)	3800 (2560-21567)

^a SARS-CoV-2-specific NAb titer (ID50) values < 500 were defined as low levels, values between 500 and 999 were defined as medium-low levels, values between 1000 and 2500 were defined as medium-high levels, and values >2500 were defined as high levels.

Supplementary Table 2. Clinical characteristics of ten COVID-19 recovered patients with undetectable level of SARS-CoV-2 specific NABs.

ID	Age (Years)	Gender	ID50^a	ID80^a	Length of Hospital (Days)	Disease Duration (Days)	Temp (°C)	Viral RNA tests	Symptoms
P1	30	F	<40	<40	22	31	37.8	+	fever and stuffy nose
P2	35	F	<40	<40	17	22	37.6	+	Cough, sore muscles, and stuffy nose
P3	16	M	<40	<40	9	12	37.7	+	Stuffy nose, runny nose, and cough
P4	39	F	<40	<40	8	12	38.1	+	Cough
P5	40	M	<40	<40	13	14	37.9	+	Cough and chest pain
P6	33	F	<40	<40	13	15	37.4	+	Fatigue
P7	61	F	<40	<40	18	22	37.2	+	Chill
P8	39	F	<40	<40	21	23	38.1	+	Sore throat, cough, and fatigue
P9	26	F	<40	<40	8	9	38	+	Cough
P10	31	F	<40	<40	12	23	38.4	+	Cough and dizziness

^a ID50, ID80: < 40 represents the NAb titers were under the detectable level in neutralization assay.

Supplementary Table 3. Clinical characteristics and SARS-CoV-2-specific NAb titers of young, middle-age, and elderly COVID-19 recovered patients

Patient Information	Age Distribution (Years)		
	15-39	40-59	60-85
Recovered Patient No.	55 (31%)	64 (37%)	56 (32%)
Male	27 (33%)	33 (40%)	22 (27%)
Female	28 (30%)	31 (33%)	34 (37%)
Length of stay (days)	14 (8-26)	16 (7-30)	17 (7-29)
Disease duration (days)	21 (9-32)	21 (11-34)	22 (15-33)
Median NAb titers (ID50)	448 (40-3717)	1255 (40-6888)	1537 (40-21576)