

Bellflower Quilt



Bellflower Quilt

Fabric Requirements

Completed Quilt: 66" x 66"



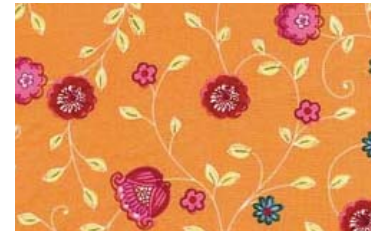
CX7654 Jewel 1/3 yard
BELLFLOWER



CX7654 Garden 1/3 yard
BELLFLOWER



CX7655 Leaf 1/4 yard
PINK BELLS



CX7655 Orange 1/4 yard
PINK BELLS



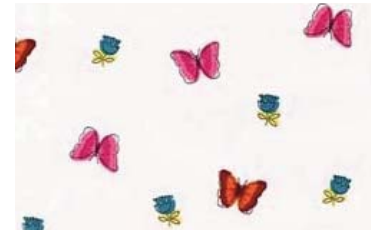
CX7655 Peony 1/4 yard
PINK BELLS



CX7655 Stone 1/4 yard
PINK BELLS



CX7655 Turquoise 1/4 yard
PINK BELLS



CX7656 Garden 1/3 yard
FLYING COLORS



CX7656 Jewel 1/4 yard
FLYING COLORS



CX7657 Garden 1/3 yard
HOW DOES YOUR GARDEN GROW



CX7657 Jewel 1/4 yard
HOW DOES YOUR GARDEN GROW



CX7658 Citron 1/4 yard
PEBBLE PATH



CX7658 Orange 1/4 yard
PEBBLE PATH



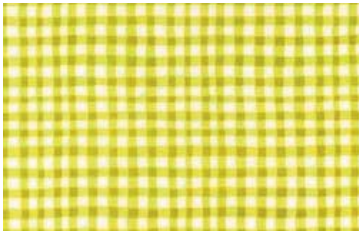
CX7658 Peony 1/4 yard
PEBBLE PATH



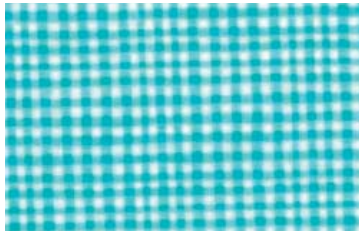
CX7658 Turquoise 1/4 yard
PEBBLE PATH



SC5333 Starfruit 2 yards
COTTON COUTURE



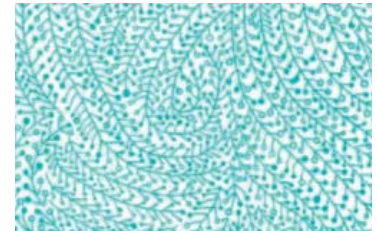
CX7161 Kiwi 1/4 yard
GINGHAM PLAY



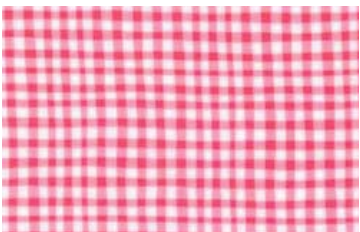
CX7161 Luna 1/4 yard
GINGHAM PLAY



BINDING FABRIC:
CX7657 Garden 1/2 yard
HOW DOES YOUR GARDEN GROW



BACKING FABRIC:
WBP6774 Luna 2 yards
VINE MAZE WIDE BACK



CX7161 Pink 1/4 yard
GINGHAM PLAY

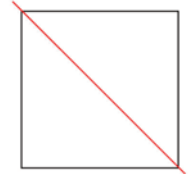
***NB. This is 108" wide fabric. For 45" wide, use 4 yards.**

Bellflower Quilt

Finished Quilt Size: 66" x 66" Skill Level: Beginner / Intermediate

Cutting Instructions:

- SC5333 Starfruit COTTON COUTURE
 - Cut 2 strips 8¾" x width of fabric (WOF). Subcut to 24 (8¾" x 3¼") pieces.
 - Cut 3 strips 3¼" x WOF. Subcut to 12 (3¼" x 8¾") and 1 (3¼" x 6") pieces.
 - Cut 3 strips 6" x WOF. Subcut to 9 (6" x 6") and 35 (3¼" x 6") pieces.
 - Cut 7 strips 3¾" x WOF. Subcut to 72 (3¾" x 3¾") pieces. Subcut to 144 right-angled-triangles by cutting diagonally from 1 corner to the opposite one (as in diagram to the right).
- CX7657 HOW DOES YOUR... - Garden
 - Cut 8 strips 2¼" x WOF. Set aside for binding.



All Patterned Fabrics (not backing & binding)- Cut 1½" x WOF strips according to the following chart:

FABRIC	CUT 1½" x WOF STRIPS	FABRIC	CUT 1½" x WOF STRIPS
CX7654 Jewel BELLFLOWER	6	CX7657 Jewel HOW DOES YOUR GARDEN GROW	3
CX7654 Garden BELLFLOWER	7	CX7658 Citron PEBBLE PATH	3
CX7655 Leaf PINK BELLS	4	CX7658 Orange PEBBLE PATH	3
CX7655 Orange PINK BELLS	4	CX7658 Peony PEBBLE PATH	4
CX7655 Peony PINK BELLS	4	CX7658 Turquoise PEBBLE PATH	3
CX7655 Stone PINK BELLS	5	CX7161 Kiwi GINGHAM PLAY	3
CX7655 Turquoise PINK BELLS	3	CX7161 Luna GINGHAM PLAY	4
CX7656 Garden FLYING COLORS	6	CX7161 Pink GINGHAM PLAY	2
CX7656 Jewel FLYING COLORS	2		
CX7657 Garden HOW DOES YOUR GARDEN GROW	6		

Bellflower Quilt

Also Needed:

- 70" x 70" quilt batting.
- A rotary cutter, a long acrylic ruler with 45° markings, cutting mat, thread, scissors, pins, pencil.

Construction:

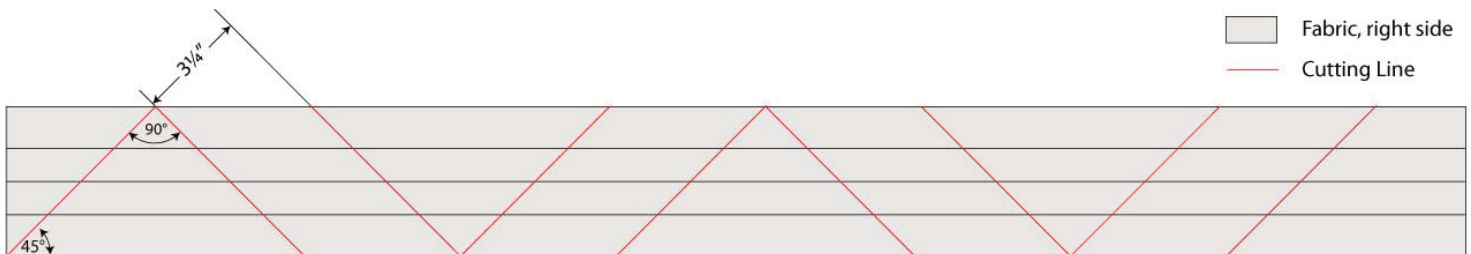
All seam allowances are 1/4".

The quilt consists of 9 Flower Blocks, each using 1 strip each of 8 different fabrics. They use fabrics as follows:

- Block #1: CX7655 Leaf & Turquoise, CX7161 Luna & Kiwi, CX7654 Jewel, CX7658 Turquoise & Citron, CX7657 Garden.
Block #2: CX7655 Peony, Leaf & Orange, CX7656 Garden, CX7161 Pink & Luna, CX7657 Garden, CX7658 Orange.
Block #3: CX7654 Jewel & Garden, CX7655 Stone & Peony, CX7656 Garden, CX7657 Garden & Jewel, CX7658 Peony.
Block #4: CX7654 Garden, CX7655 Orng & Peony, CX7656 Garden, CX7657 Gdn, CX7658 Peony & Orng, CX7161 Pink.
Block #5: CX7654 Jewel & Garden, CX7655 Orange & Stone, CX7656 Garden & Jewel, CX7657 Jewel & Garden.
Block #6: CX7654 Jewel & Garden, CX7655 Turq & Stone, CX7656 Gdn, CX7657 Garden, CX7658 Turq, CX7161 Luna.
Block #7: CX7654 Garden & Jewel, CX7655 Stone & Leaf, CX7656 Jewel, CX7657 Gdn, CX7658 Citron, CX7161 Kiwi.
Block #8: CX7654 Garden, CX7655 Peony & Turq, CX7656 Gdn, CX7657 Jewel, CX7658 Turq & Peony, CX7161 Turq.
Block #9: CX7654 Jewel & Garden, CX7655 Orange, Leaf & Stone, CX7658 Orange & Citron, CX7161 Kiwi.

Work on one Flower Block at a time. For each Block separate the 8 strips into 2 groups of 4, trying to keep colors evenly distributed between the two. If in doubt, use the quilt photo as a reference. Sew the 4 strips together along their lengths, resulting in 2 long pieces (4½" x 44"). Press seams open.

Cut both pieces as per the following diagram (making sure that all cutting lines are 45° to the long edges of fabric), resulting in 4 triangles and 4 parallelograms from each piece. Discard fabric from both ends.

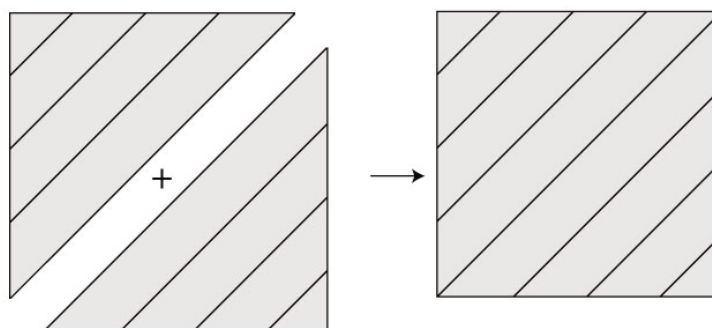


Making the Flower Blocks:

First, layout the previously cut pieces and the following SC5333 Starfruit pieces: 4 (3¼" x 8¾"), 4 (3¼" x 6"), 1 (6" x 6") & 16 (3¾" triangles) to make a flower as per **Fig. 3**, distributing the 2 different strip fabric groupings evenly around the flower. If in doubt, use the quilt photo as a reference.

As in **Fig. 1**, place 2 adjoining strip triangles right sides together (RST) and sew along the long diagonal edge to form a Strip Square. Press seams open. Clip off any triangle points that extend beyond the square sides.

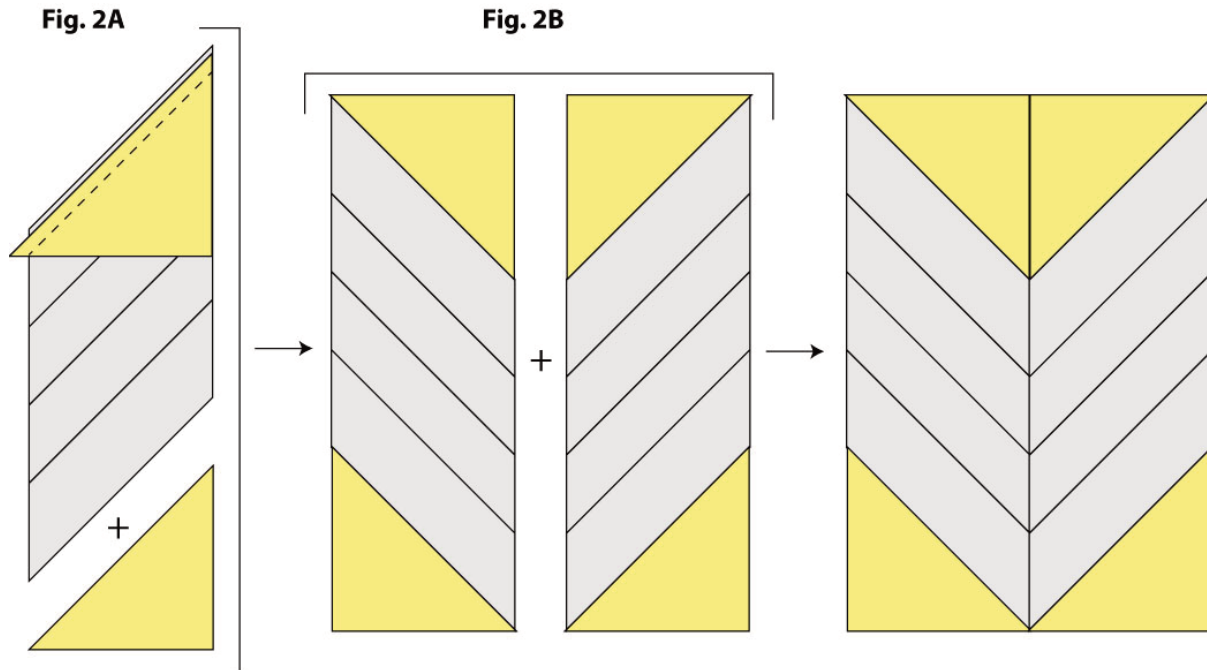
Fig. 1



Bellflower Quilt

As in **Fig. 2A**, sew 2 triangles, one to each short end of a strip parallelogram to make a Strip Rectangle, making sure to align the side edge of the triangle with the long side of the strip parallelogram. Press seams toward the strips. Clip off any triangle points that extend beyond the long edges of the rectangle.

As in **Fig. 2B**, sew together 2 adjoining mirrored Strip Rectangles to form a Strip Chevron. Press seams open.



Now assemble all the pieces to make the block, following the order as shown in **Fig. 3**, pressing all seams open.

Repeat this entire process for each Flower Block.

Assembling the Quilt Top:

Lay all 9 Flower Blocks out in a color arrangement that is pleasing to you, 3 blocks across, 3 blocks down to form a square. Pin and sew them together in rows, pressing seams open. Pin and sew these rows together in order. Press seams open.

Assembling Quilt:

Layer backing, batting and quilt top. Baste or pin.
Quilt as desired.
Square up quilt.
Join binding strips together and bind in your preferred fashion.

Bellflower Quilt

Fig. 3

