

2024
8 August



Worldwide (www.polioeradication.org)

Globally, last week — Wild Poliovirus WPV1 was detected in Pakistan (11 ES).

Last week positive findings, circulating Vaccine Derived Poliovirus cVDPV2 was detected in Chad (1 AFP, 1 ES), Guinea (1 AFP), Liberia (2 ES), Niger (3 ES), Nigeria (6AFP, 3 ES), Palestine (6 ES), Sierra Leone (1 ES), and Yemen (1 AFP).

Table (1): Worldwide Polio positive samples

Virus	Sources	Cumulative 2023	Cumulative 2024	Last week	Notes
WPV1	AFP	12	18	0	Afghanistan, Pakistan
	ES/Other	187	290	11	
cVDVP1	AFP	134	6	0	Madagascar, DR Congo
	Other	7	0	0	
cVDPV2	AFP	390	121	9	Last week: Chad, Guinea, Liberia, Niger, Nigeria, Palestine, Sierra Leone, Yemen
	ES	334	122	16	
	Other	133	59	0	

AFP Acute Flaccid Paralysis case, ES Environmental Surveillance

Lebanon — Summary indicators

Lebanon — During the past 2 weeks, 4 new cases were reported from Mount-Lebanon (1), Nabatieh (1), North (1) and South (1), aged under 5 years (2), 5-9y (1) and 10-14y (1). Among them, 1 was unvaccinated. As cumulative, 44 AFP cases were reported from 8 provinces. No poliovirus (wild or vaccine-derived) was detected.

Table 2: National indicators for AFP surveillance, 2024

Indicator	Value	Target
AFP last 2 weeks (nb)	4	1+
Total AFP (nb)	44	
Annualized NP AFP rate (/100000)	4.56	2+
Specimen adequacy (%)	90.9%	80+
Notification within 7 d (%)	84.1%	80+
Investigation within 48h (%)	100%	80+
Zero dose AFP (6m-59m) (nb)	0	
NPEV among specimens (%)	0%	10+
Sabin virus (nb)	0	-
Vaccine Derived Poliovirus (nb)	0	0
Wild Poliovirus (nb)	0	0
Final classification (nb)	35	-

Table 3: AFP/Polio surveillance indicators by province

Province	AFP cases, 2024					Zero reporting		Environmental surveillance, 2024			
	AFP (n)	NP AFP rate (/100000)	Adequacy (%)	Notified in 7 d (%)	Zero dose	Nb received reports	% Completeness	Feb	Mar	Apr	May
North	11	8.4	91%	82%	0	663	95%	Negative	SL3	NPEV	NPEV/SL3
Akkar	3	3.3	100%	100%	0	493	100%				
Bekaa	3	2.8	67%	33%	0	278	96%	NPEV/SL3	NPEV/SL3	NPEV/SL3	NPEV/SL1/SL3
Baalbeck Hermel	4	5.4	100%	100%	0	520	94%				
South	4	3.3	75%	75%	0	1295	97%	NPEV	NPEV	NPEV	NPEV/SL1
Nabatieh	4	5.7	100%	75%	0	464	94%				
Beirut	4	9.1	100%	100%	0	145	100%	NPEV/SL3	NPEV/SL3	NPEV/SL3	NPEV
Mount Lebanon	11	3.4	91%	91%	0	332	95%				

Table 4: Indicators by district, 2024

District	AFP	Rate/100,000	Adequacy (%)
Caza			
Akkar	3	4.62	100%
Aleyh	5	11.83	80%
Baabda	3	3.81	100%
Baalbeck	3	8.63	100%
Batroun	0		
Becharreh	0		
Beirut	4	9.83	100%
West Bekaa	1	5.81	100%
Bint Jbeil	0		
Chouf	0		
Hasbaya	0		
Hermel	1	18.73	100%
Jbeil	1	5.85	100%
Jezzine	0		
Kesrwan	0		
Koura	2	15.15	50%
Marjeoun	0		
Minieh Danieh	4	18.31	100%
Metn	2	2.94	100%
Nabatieh c	4	13.60	100%
Rashaya	0		
Saida	3	5.55	67%
Sour	1	2.10	100%
Tripoli	4	10.46	100%
Zahleh	2	5.22	50%
Zghorta	1	7.28	100%

Fig 1: AFP cases by week, 2024

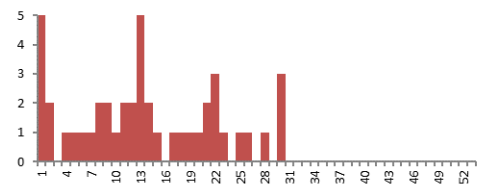


Table 3: Indicators by nationality, 2024

Population	AFP (n)	Annualized rate /100000	Specimen adequacy (%)	Notified within 7 d (%)
Resident	36	5.56	94%	86%
Palestinian	1	1.79	100%	100%
Syrian	7	2.67	71%	71%