

The sentinel surveillance system relies on collection of data and sample from patients from selected health facilities (hospitals and medical centers) distributed in the 8 provinces. Data is managed via DHIS2. Samples are tested at the National Influenza Center.

For the past 4 weeks, the sentinel for inpatients, enrolled 100 cases. Positivity rates were 5% for COVID-19 and 0% for Influenza.

For the past 4 weeks, the sentinel for outpatients, enrolled 41 cases. Positivity rates were 7% for COVID-19 and 0% for Influenza.

In summary, there is decrease in influenza activity and relative wave of COVID-19 activity from week 12 to week 22.

Severe Acute Respiratory Infection—Sentinel Surveillance for Inpatients

Fig 1: Weekly nb samples and COVID-19 positivity % (inpatient)

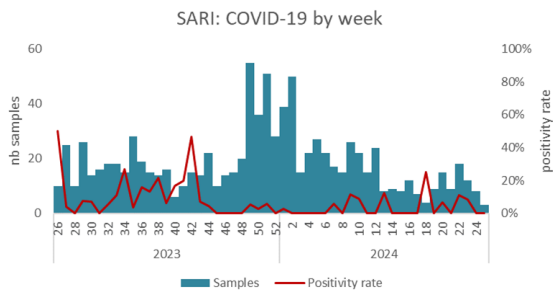
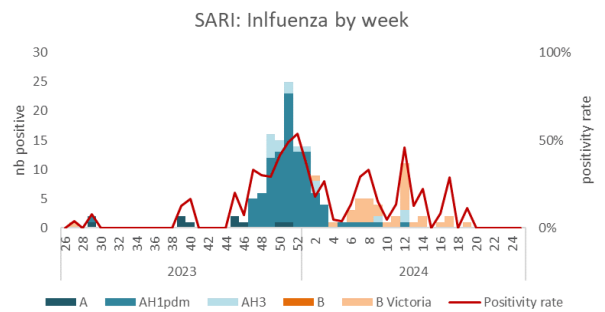


Fig 2: Weekly nb of positive Influenza and positivity % (inpatient)



Influenza / COVID-19 Like Illness - Sentinel Surveillance for outpatients

Fig 3: Weekly nb of positive Influenza and positivity % (outpatient)

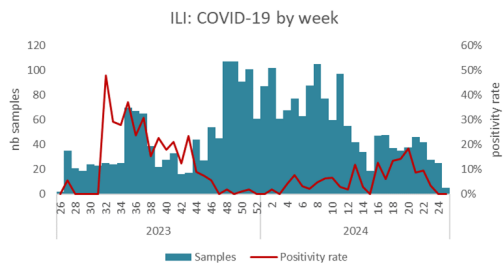
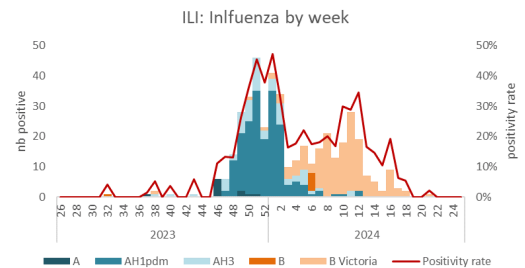


Fig 4: Weekly nb of positive Influenza & positivity % (outpatient)



Pandemic Influenza Severity Assessment (PISA)

Fig 5: Weekly ratio of Acute Respiratory Infection/Medical centers



Fig 6: PISA by week

