

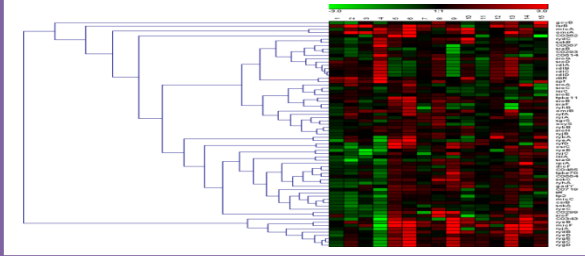
# Graphical Abstract

## Microarray



Filter flat profiles :  $\pm 0.2$   
Use first gene of TU to clustering

## Gene Clustering



## Construction of CRP related FFLs

### Coherent FFL

Coherent type 1



Coherent type 2



Coherent type 3

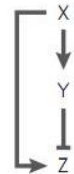


Coherent type 4

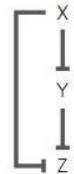


### Incoherent FFL

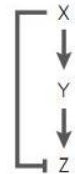
Incoherent type 1



Incoherent type 2



Incoherent type 3



Incoherent type 4



X is CRP  
Y is TF  
Z is target

EcoCyc

## Functional analysis

