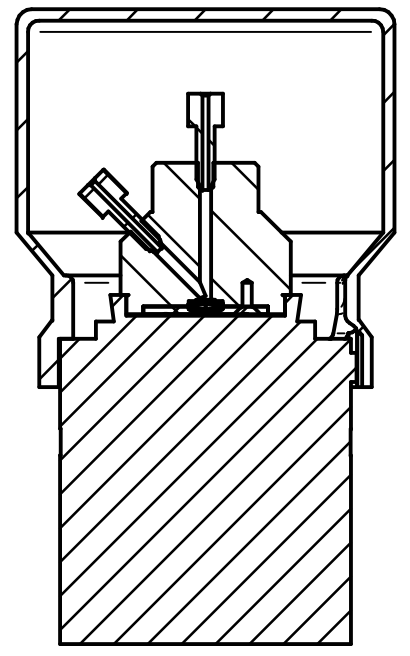



Schnitt A-A



Pos.	File Name	Material	Amount
1	Flow Cell	POM	1
2	Cover Plate	ABS 3D printed	1
3	DIN 7991 - M3x8	Stainless Steel	5
4	Fitting_unf 10-32_ferrule	PEEK	2
5	O-Ring 3x1	NBR 70°	1
6	Lense_32008_9mm		1
7	CMOS Camera		1
8	Enclosure	ABS 3D printed	1

	NAME	DATE	Flow cell with CMOS camera		
DRAWN	broeder	01/03/2023			
CHECKED			TITLE Flow cell with CMOS camera		
ENG APPR					
MGR APPR			SIZE B DWG NO REV		
<div><div><div>BAM</div><div>Bundesanstalt für Materialforschung und -prüfung</div></div></div>					
			SCALE: WEIGHT:		