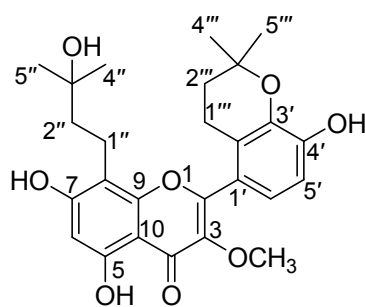


Table S10. NMR (500 MHz, DMSO-*d*₆) assignments for 10.



10

position	δ_C , type	δ_H (<i>J</i> in Hz)	HMBC
2	158.5, C		
3	138.7, C		
4	178.3, C		
5	158.8, C		
6	98.2, CH	6.29 s	5, 7, 8, 10
7	161.6, C		
8	107.6, C		
9	154.0, C		
10	104.6, C		
1'	120.3, C		
2'	120.9, C		
3'	141.9, C		
4'	148.1, C		
5'	112.7, CH	6.74 d (8.3)	1', 3', 4', 6'
6'	121.4, CH	6.88 d (8.3)	2, 1', 2', 4', 5'
1''	17.3, CH ₂	2.58 m	7, 8, 9, 2'', 3''
2''	43.0, CH ₂	1.46 m	8, 1'', 3'', 4'', 5''
3''	68.7, C		
4''	28.9, CH ₃	1.04 s	2'', 3''
5''	28.9, CH ₃	1.04 s	2'', 3''
1'''	20.3, CH ₂	2.68 t (6.6)	1', 2', 3', 2''', 3'''
2'''	31.8, CH ₂	1.73 t (6.6)	2', 1''', 3''', 4''', 5'''
3'''	73.9, C		
4'''	26.5, CH ₃	1.30 s	2''', 3'''
5'''	26.5, CH ₃	1.30 s	2''', 3'''
OCH ₃	60.2, CH ₃	3.57 s	3
5-OH		12.64 s	
7-OH		10.68 s	