

International Schools Guide





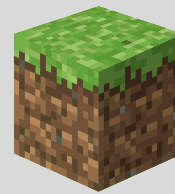
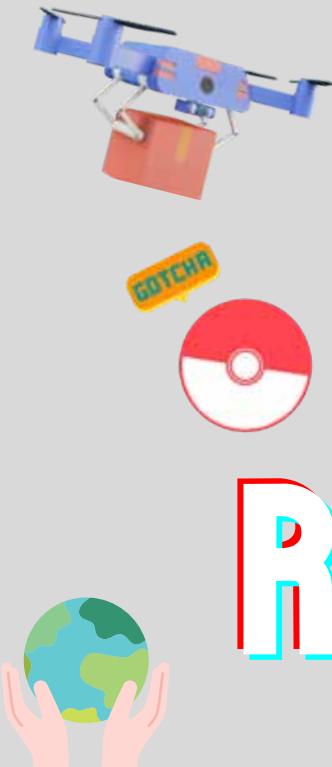
METaverse

2022 SUMMER PROGRAMS

CURATED FOR AGES 3 - 14

STEM REIMAGINED

JUNE 13 - AUGUST 31, 2022



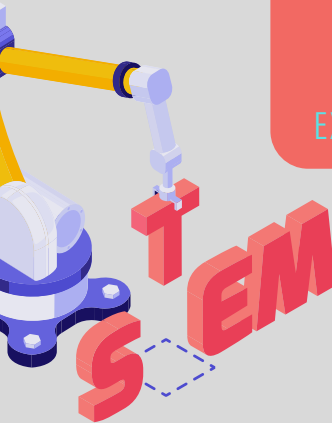
- ROBOTICS
- CODING
- MINECRAFT
- SCIENCE
- DRONES
- NFT
- METaverse
- ENGINEERING

10% OFF ON ALL SUMMER PROGRAMS
 LAST DAY JULY 16, 2022
 EXCLUSIVE OFFER FOR INTERNATIONAL SCHOOL FAIR PARTICIPANTS

SCAN TO SEE FULL LIST OF SUMMER PROGRAMS



WHATSAPP 6211-1968



International schools provide a welcome alternative

Parents are increasingly looking to international schools because their liberal style of education is well conceptualized, and helps nurture their children into intelligent, all-rounded whole persons who can realize their full potentials.

There has been, over the years, a lot of despair in mainstream education. It is not as though we are not aware of the many problems and mistakes in the beleaguered system, but unfortunately improvements have been patchy and insignificant. As a result, children continue to dread school because of the misplaced emphasis on tests and examinations. They are overladen with homework on a daily basis, stifling their creativity and development of their talents in other areas of interest.

On the other hand, international schools offer a welcome alternative because of their broader curriculum and well-researched teaching methodology. In addition to academic pursuits, their students are encouraged to broaden their perspective, hone their communication

skills with people of different backgrounds, and develop into creative and independent problem-solvers, as well as caring global citizens.

The results are plain for all to see. The language proficiency, self-confidence, and reasoning power of international school children stand them in good stead for further education whether locally or overseas, and for their long-term development and advancement in society.

This guidebook contains the most updated information on international schools, and provides answers to a comprehensive range of questions to help you make the optimum choice for your children.

Andy
 Features Editor





True tech helps students step up

The format for education is constantly changing to adapt to the current learning environment, but with new developments come its corresponding issues.

Technology makes the process of learning increasingly convenient for students. But readily available access to the internet could also lead to a spread of misinformation.

As one of the first girls' schools in Hong Kong to offer sciences and computer studies, St Paul's Secondary School is not a stranger to the fields of science, technology, engineering and maths.

With a fully integrated curriculum on the arts, commercial and social sciences, and STEM subjects, St Paul's now fully implements educational technology for both students and staff members.

Representatives of the school detailed the loss of valuable face-to-face lesson time due to the pandemic, which makes the administration of classes and online assessments difficult.

"Even though teachers have tried their best in making real-time online lessons interactive and engaging, it still cannot be compared with face-to-face lessons," they said.

"It was harder for students to focus during the online lessons, and they had to stare at the monitor for a long time. Collaborative learning with fellow classmates was also more difficult."

To face this sudden interruption to the academic year, St Paul's has adjusted its approach to education, providing supplemental learning materials in the form of educational technology.

In addition to using online learning platforms such as LaunchPacks, EB, and DSE i-Learner, teachers were assigned an iPad and ApplePencil to assist them in lesson and exam preparation.



Online face-to-face workshops under the IT Innovation Lab were conducted for all junior forms and selected senior form students to enhance their knowledge to adjust to the integration of educational technology, such as AI, IoT, VR and Big Data.

HY Wong, cohead of the IT for Interactive Learning Unit at St Paul's,

said: "Our digital resources have played an integral part in keeping the school community united and tuned into each other throughout the last two years of Covid-19-related disruption.

"The pandemic, as it has for many schools around the world, has reaffirmed our commitment to promote and embed IT across the curriculum wherever we can, and resources like Britannica School are proving invaluable to help us achieve this goal."



With such technological advancements being used for teaching, the incorporation of educational technology in the curriculum has helped students at St Paul's ignite a passion for learning.

Yet, as students engage with their studies online, there is the possibility of them acquiring knowledge from unreliable sources of information, which may hinder their studies.

To cultivate critical thinking among students, St Paul's used Britannica School, an online platform and learning resource under The Britannica Group, to help students continue with their studies.

The collaboration actually began before the pandemic, with St Paul's teachers introducing Britannica to the Interactive Learning Unit.

"We approached teachers of science subjects and humanity subjects and many would like to use the platform, so as a result we started subscribing to Britannica School," said a St Paul's representative.

"It is of utmost importance for the school to ensure that students acquire skills in understanding information critically, and for the school to provide more reliable platforms so that students can conduct their researches."

A representative of Britannica School said: "In an online environment full of misinformation and content that simply can't be trusted, Britannica School, and all of Britannica's products, provide a safe haven where articles are written knowledgeably by experts, carefully edited and thoroughly fact-checked. We maintain the highest editorial standards in the field of education, so students can rely on our content."

Britannica School encourages students to critically examine information online, encouraging them to consider the different origins and contexts of sources.

To reaffirm the importance of fact-checking the authentication of information, especially within the digital sphere, it teaches students to explore additional details, such as target audience and potential bias.

In addition to features unique to Britannica, such as "On this Day,"

"Flash Facts" and "Compare Countries," students can learn through a fun and interactive experience, broadening their horizons and understanding of the world.

"Britannica's wonderful partnership with St Paul's Secondary School has helped us develop a clearer understanding of teacher and student needs, particularly in a post-pandemic world," said a representative of Britannica School.

"We're looking forward to continuing the collaboration with St Paul's education leaders to further broaden students' horizons and support their learning both in-class and remotely. These learnings will be applied to other schools in Hong Kong and around the globe."

natasha.tai@singtaonewscorp.com



Contents

1

Editor's Message
International schools provide a welcome alternative

2

Feature
True tech helps students step up

9

Yew Chung International School
An Evolving Curriculum: YCIS Empowers Students to Lead in Learning Communities

10

Yew Chung International School
Implementing Core Values from the Start at YCIS

12

Hong Kong Golf & Tennis Academy
Inside the Renowned Hong Kong Golf & Tennis Academy

14

The ISF Academy
Cultivating critical thinkers with the passion to learn

16

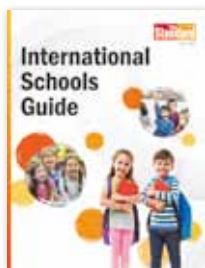
American School Hong Kong
Holistic American & International Education at ASHK - Nurturing independent critical thinkers and responsible global citizens

18

Hong Kong Academy
Preparing future leaders with innovation and compassion

The Standard 英文虎報

"International Schools Guide" is published by The Standard



Display Advertising Department
3/F, Sing Tao News Corporation Building,
7 Chun Cheong Street, Tseung Kwan O Industrial Estate,
Tseung Kwan O, New Territories, Hong Kong

Advertising Hotline: (852) 3181 3311
Fax: 2758 3579

All rights reserved.

Features Editor: Andy Ng
Designer: Sally Lau
Business Director: Irene Chan
Website: www.thestandard.com.hk
Email: advertise@thestandard.com.hk

Overseas Student Insurance

Hospitalization and Outpatient Expenses Benefits
Worldwide Emergency Assistance Services
Study Interruption Cover

Enroll Now To Enjoy
20% off



Mobile App
available now



From now until 31 December 2022, you can enjoy 20% off premium discount offer for successful application of Overseas Student Insurance. Please refer to the insurance fact sheet and the policy for product details. Terms and conditions are subject to change without prior notice. Hong Leong Insurance (Asia) Limited reserves the right of final decision.

 豐隆保險
HongLeong Insurance

 2961 2266
www.hl-insurance.com
  Hong Leong Insurance 豐隆保險

Contents

20

Bloom KKCA Academy
A Future-Oriented,
Bilingual School of Innovation

22

Christian Alliance International School
Expanding CAIS: Space to grow in a place you
know

24

Creative Secondary School
Three Schools • One Continuum •
One Philosophy

26

Christian Alliance P.C. Lau Memorial International School
Paving a brighter future for children with
Shepherd Leadership

28

Invictus School Hong Kong
Invictus School Hong Kong

30

Shrewsbury International School Hong Kong
The Best Primary School in Hong Kong

32

Wycombe Abbey School Hong Kong
Future-proof Education

34

Fairchild Junior Academy / Fairchild Kindergarten
Child Led Play the Fairchild Way



Sear Rogers International School
弘爵國際學校



No debentures nor capital levies required

**WE ARE AN ACCREDITED
CAMBRIDGE INTERNATIONAL SCHOOL**

Applications for Year 1 to Year 13 Entry Primary and Secondary Now Open

Primary Section (Kowloon Tong campus)
Secondary Section (Tsuen Wan campus)

Tel: 2547 5479

enquiry@sris.edu.hk



Contents

36

Guidepost Montessori
Independence Through the Years

38

Lou Pichoun French Kindergarten
Multilingual learning for a globalized world

40

Maple Bear Canadian International
Kindergarten Hong Kong
Experience Quality Bilingual Canadian
Education in TKO!

42

Mulberry House International Kindergarten
Bring out the best in every child

44

Oxbridge School
Aim for Excellence, Linking Learning to Life

46

Woodland Pre-Schools
Championing a culture of positive wellbeing

48

Genius Development
Thinking beyond traditional education to
transform learning

51

Directory



An Evolving Curriculum: YCIS Empowers Students to Lead in Learning Communities

The unique model of ‘Learning Communities’ is an integral part of Yew Chung International School’s (YCIS) educational philosophy. It is a shift away from traditional pedagogies that promote hierarchical relationships between teachers and students. For Murray Forrest, Western Co-Principal of YCIS Primary, visualising the school as a community can empower and inspire students to move the curriculum in exciting and unexpected directions. “It’s a fairly revolutionary step. You are essentially putting the curriculum in the hands of the students,” he says.

The unique model of ‘Learning Communities’ is an integral part of Yew Chung International School’s (YCIS) educational philosophy. It is a shift away from traditional pedagogies that promote hierarchical relationships between teachers and students. For Murray Forrest, Western Co-Principal of YCIS Primary, visualising the school as a community can empower and inspire students to move the curriculum in exciting and unexpected directions. “It’s a fairly revolutionary step. You are essentially putting the curriculum in the hands of the students,” he says.

Citing a current Year 5 project on refugees and displacement, Forrest explains, “Many years ago, the same project was on the theme of exploration, mostly about the journeys made by Renaissance explorers from the West. Over time, students became more interested in the movement of peoples and teachers responded to their changing interests by moving the curriculum towards more current issues.” Since then, the project is now informed by the United Nations’ Sustainable Development Goals and prepares students to be more globally competent and compassionate actors in their community. The Year Fives have had the opportunity to learn about the situation of refugees locally and globally, contact charities and fundraise for them together in groups.

As the school curriculum encourages Project-Based Learning, students are guided by teachers to marshal knowledge from different fields to explore an overarching question for several weeks. STEM is not taught in discrete lessons but is incorporated into each and every lesson. “For their fundraising projects, the Year Fives had to conduct research on migration, design their own websites and create eye-grabbing posters to attract funding. Similarly, the Year Fours, who have been involved in a project themed around chocolates, had to design and engineer their own chocolate mould. The project ended with a physical product.”



Under the new model of Learning Communities, the flexibility to move around the school is crucial. The Primary campus’ newly renovated Flexible Learning Spaces are open-plan and equipped with an eclectic range of movable furniture to encourage students to move around and learn from their peers, teachers and even those who are in other classes. “In the model of Learning Communities, you have the opportunity to collaborate with who you know is going to help you best,” Forrest explains, “Our model of Learning Communities emphasises enjoyment and curiosity. Children will be willing to learn when the curriculum is student-driven. The teachers are there to support students on their individual learning paths according to their own pace.”

Forrest believes that it is ultimately the pedagogy and philosophy that is liberating for students.

Yew Chung International School

Tel: 2338 7106

Email: admissions@ycef.com

Website: www.ycis-hk.com



Learn more about
Project-based Learning

Implementing Core Values from the Start at YCIS

When it comes to instilling personal values and skills that will lead to later successes in life, a positive early childhood education cannot be underestimated, experts say.

During these formative years from zero to six years old is when rapid neurological development happens in children. As such, a holistic learning environment is proven to help young learners begin to develop a sense of self, learn to build authentic, trustworthy and respectful relationships, as well as discover the world around them.

For these reasons, Yew Chung International School (YCIS) places incredible value into making sure that they are helping children to build a solid foundation of values and skills that they can take with them throughout their lifelong learning and personal journeys.

With a rich history of almost 90 years providing quality Early Childhood Education (ECE) in Hong Kong, the school prides itself in two areas: being a forerunner of play-based learning in Hong Kong, as well as its dedication to uphold its “12 Values” through the Yew Chung Approach.

According to Amy-Leigh Hood, Assistant Co-Principal of the school’s ECE section: “Our approach to learning is unique and has shown over time to be successful”.

The school follows a Chinese and English bilingual programme for all years. The Infant and Toddler Learning Programme (ITLP) and the Kindergarten Programme is guided by the developmental outcomes of the Early Years



▲ Teachers use music and singing to engage children and support their auditory skills and language development from a young age.



▲ Children’s curiosity and investigation are encouraged as they explore their ideas through play opportunities.

Foundation Stage of the National Curriculum of England. In line with this curriculum is an emphasis on the motto: ‘Development Matters’ with focus areas placed on seven domains. These include physical development, understanding the world, expressive arts and design, personal, social and emotional development as well as Mathematics and Literacy.

Underscoring this curriculum is a further emphasis on four principles which assert that: every child is unique and is a competent learner; children are engaged in building positive and trustworthy relationships; the environment in which children learn in plays a key role in their development and learning; and that children develop a global perspective through the multicultural and multilingual focus.

Beyond these four principles, what else makes the school’s early years programme stand out are its 12 Values which form the Yew Chung Approach. This was developed over a period of time by research done by the University of Illinois at Urbana-Champaign. Some of the 12 Values of the Yew Cheung Approach include: children are worthy of our respect and admiration; children are capable and can be trusted, members of the teaching team work together as equals, and teachers and children construct learning together.

While all values are equally important and foundational to the work that the school does. Hood highlights a few to illustrate how the school embeds them into its curriculum.

“Firstly ‘Value 1: Children are Worthy of our Respect and Admiration’ really frames all the work that we do, reminding us of the reason our work with young children is so important,” she said.

Every child is respected as a unique individual, and teachers and leaders are focused on creating opportunities and developing ways that enrich and deepen their individual strengths as well as support areas for growth.



▲ Collaboration with others is an important part of learning and development in an Early Years context.

Another value that Hood talked about was ‘Value 4: Strong Relationships Must Be Developed Between Teachers and Children’. She explained that children learn in the most authentic way when they know that they are safe and secure. This is how trustworthy relationships with those who care for them are formed. This is also why there is such an intentional focus on building relationships and trust between student and teachers, further extending this to the parent community as well.

Another value is ‘Value 9: Children are Supported in the Use of their Home Language’.

“We are intentional about celebrating and supporting children in the development of their home language, as well as supporting them in becoming multilingual learners,” Hood said. As a bilingual school, a key tenet is a belief that children can flourish and best express themselves in the language that they naturally think and process information in. Hood explained that this is in fact powerful in aiding the acquisition of knowledge and other languages.

As a school, YCIS is proud of its 12 Values within the Yew Chung Approach and many believe it is what makes them stand out further lending to its success.

“Our 12 values are intertwined into everything we do as a school. They are instilled in the work we do within YCIS and are referred to in discussions, reflections, planning and learning,” Hood said.

She adds that “the two values that really underscore everything is the way that we view children and our perspective on how valued, admired, trusted, and respected children are as individuals,” she said. “All the work we do with children and families is based on our image of the child and how important their learning, growth and development is to us.”

So even given the online learning during the school closure, YCIS has never wavered on its dedication towards

creating interactive, engaging and stimulating online sessions. As in the classroom, children’s interests, ideas and individual queries continue to be a strong focus as well as the support offered to families through workshops, connection or resource boxes sent home. This is all constructed through well thought out reflective discussions amongst the teachers and leaders in order to create an off-campus online learning experience that fully honours the YCIS way.

“We are determined to provide children within our ECE with the best learning experience, whether we are online or face-to-face on our campus,” Hood said.



▲ Teachers engage in learning alongside children in both English and Chinese, challenging their thinking and supporting their development skills.

Yew Chung International School

Tel: 2338 7106

Email: admissions@ycef.com

Website: www.ycis-hk.com



Check out the ECE 12 Values



Inside the Renowned Hong Kong Golf & Tennis Academy

Set in 19 acres of pristine landscape, Hong Kong Golf & Tennis Academy (HKGTA) is the city's ultimate holistic sports and wellness destination, offering bespoke expert-led training programmes at its world-class sporting institutes. One of their patrons discusses why he and his family joined the Academy:



Cary Cheung, 2017 Hong Kong National Boxing Champion, 2020 Hong Kong Olympic Team Qualifier and current Hong Kong National Boxing Team Coach, is one of HKGTA's newest patrons. Cheung began his amateur boxing journey late, earning him the nickname "Uncle", but his determination training with the best coaches helped him on his rise to number one.

"Over the years, I've been fortunate to have trained under the very best and Hong Kong's National Team Coach, Mike Tang, has always in my corner supporting me ever since I

decided to box competitively in 2016. Whenever I'm in the ring, I can hear his voice guiding me."

Since his son's birth, Cheung had been looking to join a private member's club. After a friend mentioned enjoying a staycation at HKGTA, Cheung decided to find out for himself. "Even before entering the grounds, we immediately fell in love with the place and applied for Patronship in 2021," he enthuses.

Cheung advises young athletes looking to develop their sports career that it's never too late to start training with the best coaches. "HKGTA's coaches are fantastic. You can feel their passion

and professionalism for the sport. You'll find coaches there that look after your wellbeing, challenge your abilities and push athletes in the right direction."

"I'd absolutely recommend HKGTA to other families, as everyone there is so welcoming and helpful," he adds. "It's the ideal environment for your kids to be safe and have fun, especially during Covid times."

Open now for 2022 applications

Hong Kong Golf & Tennis Academy was founded in 2016 as a space where potential of all kinds can be realised and greatness could thrive. Set amongst over 19 acres of pristine landscape in the heart of Sai Kung, HKGTA offers the highest standards of elite sports training, alongside unparalleled service for Patrons of all ages and abilities. Quickly becoming Hong Kong's most coveted Academy, HKGTA boasts a community of 700 Patron families who call it their second home.

This family-oriented academy offers a wide-ranging sports curriculum including PGA of America, Rafa Nadal Tennis Center, Elite Swim and Joint Dynamics; guests can choose to participate in private one-on-one lessons or groups of six per class.

Tennis enthusiasts will be thrilled to hear that the region's first Rafa Nadal Tennis Center will launch there in July 2022, bringing an unprecedented level of tennis training to HKGTA's already world-class facilities. Featuring seven outdoor courts, an indoor court and two mini tennis courts, the new Center is inspired by the Rafa Nadal Academy by Movistar, in Rafa Nadal's hometown of Mallorca, Spain.

Combining a professional-level environment with some of the world's very best coaching staff, the Center uses the same methodology that has led Rafa Nadal to the top of the professional circuit. Designed by the technical team that has been with Rafa Nadal throughout his sporting career, this methodology is suitable for players at all levels, and has been fine-tuned by Rafa Nadal and his coaches through decades of professional tennis play.

This cutting-edge system is updated regularly to reflect the constant evolution of technology, equipment and the game itself, together with training in the values fundamental to Rafa Nadal's success – such as mobility, training and game intensity, concentration and a winning attitude. Spanning the game's physical, mental, technical and strategic aspects, this 360-approach thus shapes players to become the best version of themselves.

Whatever your sporting, fitness or leisure needs, HKGTA's leading facilities and excellent coaching will help you be among the greats.



Hong Kong Golf & Tennis Academy

If you would like to book a personal tour of the Academy please contact Sonia Enberg on

E soniaenberg@hkgta.com,

D +852 3959 0065 or

M +852 6133 9165

Location: 81 Tai Chung Hau, Sai Kung, Hong Kong



Cultivating critical thinkers with the passion to learn

The Independent Schools Foundation Academy (The ISF Academy) is a not-for-profit private independent primary and secondary school providing a unique inquiry-based Chinese and English bilingual immersion education. We are a Chinese school with a global perspective.

We believe that learning is the active construction of knowledge best experienced through meaningful activities that foster exploration and creativity. An ISF education emphasizes probing discussions, passionate debates and critical thinking. ISF students are cheerful high achievers who exude a joy of learning that drives their development as culturally agile and confident communicators who possess the social, creative and analytical thinking skills necessary to succeed and thrive in a complex world.

We are a strong proponent of learning by doing. Our

hallmark Experiential Learning Program features unfamiliar settings and novel challenges that build character and confidence. An ISF learner is at home building dormitories in Laos, researching ancient texts in Cambridge or exploring the rich history of the Silk Road.

We are an accredited International Baccalaureate (IB) World School. The last three years has seen 156 students taking the IB Diploma exams and achieving an average score of 39 out of a possible 45, enabling our graduates to receive offers from leading universities all around the world.



► Personalized University Counseling

Our systematic and personalized university guidance and careers program spans from Grade 9 to 12 and allows our students to make informed decisions about their DP subject choices and subsequent university applications.

► Bilingual Diploma and Bilingual Theory of Knowledge

From our very first graduating class, we have had a 100% IB Diploma success rate with at least two thirds of our students each year being awarded the coveted Bilingual IB Diploma. Students also receive Theory of Knowledge instruction in both English and Chinese and may choose either language for their written paper.

► Exclusive Leadership and Experiential Learning Programs

Our Virtue and House structures in primary and secondary respectively, together with our Experiential Learning Programs, nurture our students' development as excellent communicators and leaders that empower them to serve as responsible global stewards of tomorrow.



University Offers in the Last Three Years include (by alphabetical order):

- Canada:** McGill University, The University of British Columbia, University of Toronto
- Hong Kong:** Hong Kong University of Science and Technology, The Chinese University of Hong Kong, The University of Hong Kong
- U.K.:** Durham University, Imperial College London, London School of Economics and Political Science, Royal Academy of Music, University of Cambridge, University of Oxford, University of St Andrews
- U.S.A.:** Brown University, Cornell University, Dartmouth College, Harvard College, Johns Hopkins University, Parsons New School of Design, Pomona College, Princeton University, Stanford University, University of California (Berkeley), University of California (Los Angeles), University of Pennsylvania

The Admissions Office

- ☎ 2202 2028
- ✉ admissions@isf.edu.hk
- 🏠 1 Kong Sin Wan Road, Pokfulam, Hong Kong
- 🌐 academy.isf.edu.hk



Scholarships and Financial Aid Available



Holistic American & International Education at ASHK - Nurturing independent critical thinkers and responsible global citizens

American School Hong Kong (ASHK) is a KG to Grade 12 international school located in the peaceful Tai Po community. With a rigorous American and international program, our inquiry and concept-based approach to teaching and learning promote the development of 21st-century skills to prepare our students for their future. Students from KG to Grade 10 are offered the US Common Core curriculum, while students from Grade 11 to Grade 12 are offered the International Baccalaureate Diploma Program (IBDP).

At ASHK, students experience a culture of creativity and innovation through the STEAM program. Students are guided through the Engineering Design Process (Ask, Imagine, Plan, Create, and Improve) to encourage innovation and creativity. Students learn how to ask critical questions, research the problem, develop possible solutions, build prototypes, test and evaluate their designs, and then redesign as needed. The STEAM program equips students with the necessary skills to succeed in a global economy, such as critical thinking, problem-solving, and collaboration skills. While intellectual development is of paramount importance, significant emphasis is placed on the social, physical, emotional, and creative domains to provide a holistic experience for the development of the whole child. ASHK provides service opportunities and field trips for students to broaden their horizons, allowing them to become internationally-minded global citizens.

Dedicated to the vision of supporting students to achieve their fullest potential and celebrating the bilingual community, ASHK has a comprehensive English support program catered to every student's needs. In the program, students benefit from an academically rigorous curriculum while being supported to acquire the English language skills they need to succeed. Our experienced specialist language teachers nurture students to



success by providing targeted instruction for English language development whilst enabling them to access the full curriculum.

Fully accredited by the Western Association of Schools and Colleges, the Middle States Association of Schools and Colleges, and the International Baccalaureate Organization, ASHK is owned and operated by Esol Education, the world's largest operator of international American schools, which serves more than 10,000 students worldwide. Graduates from Esol schools are now attending leading universities worldwide, including Stanford University, Massachusetts Institute of Technology (MIT), Yale University, Columbia University, University of Toronto, and the London School of Economics. A rolling admissions scheme is currently in place at ASHK, allowing for new student applications any time throughout the academic year. The scholarship program also provides students with an equal opportunity to enjoy this amazing educational experience, with financial assistance available.

American School Hong Kong

6 Ma Chung Road, Tai Po, N.T.
Tel: 3919 4111
Email: admissions@ashk.edu.hk
Website: www.ashk.edu.hk



Nurturing Students to Achieve Their Fullest Potential

Now accepting applications for the 2022/23 school year!

- Top-tier KG - G12 international school providing holistic American and international curriculum
- Small class sizes allow teachers to accurately assess each child's needs and provide the specific support and guidance
- A vibrant, joyful and supportive school community



Register for a Campus Tour!



Preparing future leaders with innovation and compassion

HKA's unique programmes, exceptional faculty and award-winning facilities come together to provide a rigorous, student-centred education which enables their students to develop the academic, innovation and compassion skills that they need to thrive now and in the future.

STEAM

Skills gained from STEAM education prepare students to be successful in many fields. At HKA STEAM is integrated into the curriculum as well as being part of the co-curricular programme. In Primary School the specialist and home room teachers integrate STEAM into each unit of inquiry encouraging students to make connections and apply their knowledge and skills across subject areas. As they move into Secondary School students further develop their fact gathering, problem defining, opportunity sensing, risk analysis and solution creating skills through both independent and collaborative student-led projects. The school's award winning campus offers fully equipped laboratories, design technology and art studios, offering opportunities for hands-on and digital experiences. Student projects are also inspired by the school's many cutting edge sustainability and environmental features.



Mandarin Programme

Expression through more than one language is a fundamental element of an IB education and an advantage in our highly connected world. HKA's Mandarin curriculum provides language instruction for students at all levels of proficiency. In Pre-K, the home-base co-teacher is a fully qualified Mandarin speaking teacher. In Kindergarten through to Grade 5, Mandarin is taught as a specialist subject as well as being infused in classrooms by Mandarin speaking co-teachers. In middle school, students can opt to take MYP Chinese A language and literature, MYP Mandarin or MYP

Spanish as a second language. Grade 11-12 students can choose to study a bi-lingual IB Diploma by studying IBDP Chinese A Language and Literature, or they may choose IBDP Mandarin B, Spanish or French B or ab initio courses.

Global Citizens

Starting from Pre-K, HKA cultivates individuals with a commitment to understanding others and making decisions with an awareness of how they affect communities. By studying real-world issues students learn how to analyse information, respect diverse perspectives and positively contribute to society. Starting in middle school students build their Global Citizens Diploma (GCD) portfolio showcasing their unique identity and competencies in the areas of intercultural communication, community engagement and global understanding. HKA is the only school in Hong Kong to offer the GCD.

HKA students experience a broad and balanced education, all graduates earn two credentials, and the majority earn three. HKA students consistently outperform the IB DP world pass rate and average total points and go on to study at competitive universities and colleges all around the world.



Hong Kong Academy

33 Wai Man Road, Sai Kung, New Territories, HK
 Tel: 2655 1111
 Website: hkacademy.edu.hk



A non-profit international IB World School
 PLAYGROUP | KINDERGARTEN | PRIMARY | SECONDARY

HONG KONG ACADEMY An Exceptional International Education



THREE PROGRAMME IB WORLD SCHOOL	STATE-OF-THE-ART FACILITY	INCLUSIVE EDUCATION	GLOBAL ALUMNI NETWORK	COMMITMENT TO INTERNATIONALISM	EXCEPTIONAL LOCATION	LOW STUDENT:TEACHER RATIO	STRONG HOME-SCHOOL PARTNERSHIP
---------------------------------	---------------------------	---------------------	-----------------------	--------------------------------	----------------------	---------------------------	--------------------------------

Pathways to Individual Excellence

HKA students develop the knowledge and skills that they need to thrive now and in the future. From our Early Childhood programme to the final years of Secondary School, our highly experienced teachers provide well rounded, student-centred learning experiences that encourage every child to fulfil their greatest potential.

Captivating Learning Environment

HKA's award-winning campus and unique educational programmes spark each child's natural curiosity and passion for learning. The purpose-built STEAM, sports and performing arts spaces offer endless opportunities for innovation both during the school day and beyond with over 100 co-curricular activities available.

100% IB Diploma Pass Rate

HKA graduates are exceptional global citizens who earn up to three Diploma credentials and successfully enrol into world-class universities including Ivy League colleges in the US and Russell Group universities in the UK.

Scholarships and Financial Assistance

HKA is offering a limited number of merit-based Secondary School scholarships for students transitioning into HKA from local schools starting August 2022. We also continue to offer means-tested financial assistance of up to 90% for eligible families.

Apply Now
 Spaces Available



Contact Admissions to
 Arrange a
 Personalised Tour

- +852 2655 1111
- admissions@hkacademy.edu.hk
- 33 Wai Man Road, Sai Kung, New Territories, Hong Kong SAR
- www.hkacademy.edu.hk

A Future-Oriented, Bilingual School of Innovation



Sweeping technological changes have reshaped our children's brains, future careers, the way they play, and the way they learn. It has made a lot of skills irrelevant and others essential. So what should innovative education look like?

Innovative schools that are excellent require a balance between structure and choice, between traditional and pioneering practices, decisions that take professional expertise, continuous negotiation, and genuine concern for students as individuals.

"It is with this understanding that our team takes on the challenge of building a one-of-a-kind learning community in Hong Kong that fulfills the promise of preparing students for purposeful work and meaningful lives," said Renée Boey, Founder and Head of School.

Cultivating Compassionate Creators and Social Innovators

Bloom's curriculum has an eye toward the future. We teach innovation as a commitment to see possibilities through to realities, to imagine beyond the status quo, and to create fresh value. Our project-based learning modules examine human history through interdisciplinary lens, and each cumulates in students creating a product of positive change. The program develops enduring competencies and the disposition to embrace the open-ended nature of design problems. We take risks, learn from mistakes, and have the discipline to reflect and improve – together.

"Every student has a unique and interesting perspective on our world and can solve an impossible problem – if they ask meaningful questions and are supported by robust skills that set them up for a successful future," said Mei Chen, a former NASA engineer who is currently Bloom's STEM Director.

Bilingualism and Dual Language Pathways

Our dual language program thoughtfully balances positive education with the academic demands of becoming biliterate in Mandarin and English. The 50/50 split reinforces our respect for both languages and different cultures and gives our students ample opportunity to function comfortably, competently, and confidently in both languages.

Positive Education

Education should be inherently positive, yet unfortunately, schools often lose sight of the real reason they exist – the students. Through explicit and implicit focus on positive education we aim to build on and enhance each child's strengths and create a community of compassionate learners. Daily campfires as well as low student-teacher ratios allow us to focus on the whole child.

City as Campus: Weekly Field Trips

Our campus extends far beyond the classroom. Bloom students embark on weekly field trips, from visits to organic farms to science experiments at the Aberdeen Reservoirs. Students make sense of what they have learned in the classroom out in the real world and bring back questions, observations, and ideas that motivate them to pursue learning within the classroom. These regular interactions with the community also allow for positive values to be translated into caring actions.

We invite you and your children to join us and experience what educator Dave Perkins calls a "Future Wise" education.

Bloom KKCA Academy

7 Pui Tak Street, Shek Kip Mei
Tel: 2311 2268
Whatsapp: 5981 5959
Email: admissions@bloom.edu.hk
Website: www.bloom.edu.hk



JOIN OUR NEXT INFO SESSION



Bloom is built with an eye toward the future.

Founded by educators, entrepreneurs, and engineers, Bloom KKCA Academy provides an innovative G1-6 bilingual, project-based education. From a NASA engineer to a forest educator, our teachers are what make Bloom special.



Bilingual/Multicultural
雙語/多元文化



Project-Based Learning
專題式創意學習



Future-Oriented STEM
啟迪未來的理工課程



Weekly Field Trips
每週實地考察



Expanding CAIS: Space to grow in a place you know

Christian Alliance International School (CAIS) continues to grow the minds of its students, as it expands the campus and further diversifies its program of studies and extracurricular activities.

Global Education

CAIS is a non-profit, international school of 1,500+ students representing more than 25 nationalities based in Hong Kong. It is committed to holistic development through academics, spiritual life, athletics and the arts, providing a uniquely transformative educational experience for children aged from 5 to 17.

A through-train school, founded by the Kowloon Tong Church of the Chinese Christian and Missionary Alliance (KTAC), CAIS welcomes students of all backgrounds to its preparatory, lower and upper primary and secondary sections – all housed in an amazing campus that provides state-of-the-art spaces from classrooms to fun play areas.

The new Phase IIA Amenities Building will be joining the Academic Building to deliver even more options for CAIS students to achieve their aspirations and pursue all-round excellence. The highly qualified teachers from across the globe are dedicated to come alongside students to guide and inspire them to know themselves and forge their own paths.

Rooted in Hong Kong

Whether students and their families are based in Hong Kong long term or just for a season, they can find a place at CAIS for an international education with strong regional interests. CAIS offers a strong Chinese Studies Program for students to learn the traditions and culture that is typical of Hong Kong alongside the language (dual script). French and Spanish are also a part of the World Languages Program.

CAIS is authorized as an IB World School, offering the International Baccalaureate Diploma Programme (IBDP), with a choice for students to select the Bilingual Diploma (English and Chinese). The school is also accredited to deliver the Alberta (Canada) Curriculum from Preparatory to Grade 12 and offers Advanced Placement (AP) courses – three gateways to graduation and the world stage.

A Place to Belong

CAIS creates a sense of belonging in school that extend beyond the confines of four walls. Students at CAIS grow to maturity and graduate to various career paths with a heart to serve the Hong Kong community and the world, having experienced Christian love and care at the school. CAIS is a school where the students can grow together yet still be their own persons, with their different personalities and interests.

In the past few years, the CAIS learning community has grown in size and becoming even stronger, with deepening partnerships between parents, students and teachers. Head of School, New Zealander, Richard Vanderpyl, says: "In New Zealand, the Māori people have a beautiful expression, *Tūrangawaewae*, which means a **place to stand**. It speaks of being able to say, 'In this place I belong'. At Christian Alliance International School, it is our heart's desire for every student to be able to say, 'CAIS is my *Tūrangawaewae*. I feel that I belong here.'"

Christian Alliance International School

33 King Lam Street, Lai Chi Kok, Kowloon, Hong Kong

Tel: 3699 3862 / 3699 3863 / 3699 3865

Email: admissions@caisbv.edu.hk

Website: www.caisbv.edu.hk

 CAIS.HK  caisbv

READY FOR THE FUTURE

Prepared for Life

Apply Now for August 2022/2023

33 King Lam Street, Lai Chi Kok, Kowloon, Hong Kong

(852) 36993862, 36993863, 36993865

admissions@caisbv.edu.hk



www.caisbv.edu.hk



Our Prospectus



Accreditations:



Advanced Placement® and AP® are registered trademarks of the College Board and the National Merit Scholarship Corporation, which were not involved in the production of, and does not endorse, this publication.

Our mission is to cultivate learners with knowledge, skills, integrity and discernment, growing in love for God and service to humanity.



CREATIVE SCHOOLS CONTINUUM

Creative Secondary School

Creative Primary School

Creative Primary School's Kindergarten

啓思中學

啓思小學

啓思小學附屬幼稚園



Three Schools · One Continuum · One Philosophy

The Creative Continuum of Creative Primary School's Kindergarten (CPSKG), Creative Primary School (CPS) and Creative Secondary School (CSS), is known for its forward-thinking, progressive, exceptionally student-centred education for students aged 3 to 18 in Hong Kong. Arts and aesthetic education, being such an important and beneficial part of the all-rounded development of students, is highly emphasised in the respective curriculum of our 3 schools.

It is a common concern nowadays that traditional education with only an emphasis on academic attainment based on exam scores is not going to be adequate for preparing new generations of the workforce for our digital and innovation-driven economy. In our increasingly competitive and rapidly changing world, creativity and innovation are the key drivers of economic growth and competitiveness.

Our Belief

Every student in our school is uniquely talented and should be empowered to develop his/her potential to the full. A caring, respectful, trusting and positive school culture can provide them with the confidence to learn, to meet new challenges and develop self-respect and respect for others.

Our Vision

We see ourselves as a progressive and forward-thinking continuum of schools that blends the best of Chinese & international Educational Ideals. Our aim is to educate positive, confident, compassionate and culturally aware young citizens and prepare them for the rapidly changing, increasingly challenging world.

School Life

School life is vibrant, energetic, with choices and opportunities for development. Our exceptionally student-centered ethos underpins academic, physical, aesthetic and character developments of our students. Through our caring, happy and highly supportive school environment, we foster students' positive character, generic skills, passion for learning, strong awareness of own culture and international outlook.

Curriculum & Facilities

Our world-class curriculum and pedagogical approach motivate students to learn proactively, effectively and

independently by fostering their critical, creative thinking, inquiry and life-long learning skills. Students become positive, creative and compassionate life-long learners, who respect their own cultural heritage and that of others. To support their learning, they are provided with the best resources and modern facilities.

Teaching Team

Our local and overseas teachers are not only recruited for their professional skills and commitment to education, but also for their naturally caring, understanding and supportive attitudes towards students.

Stakeholders Relationships

We value positive, mutually supportive relationships with a strong sense of belonging among members of our school community. Parents are valued as partners of our students' education and are encouraged to keenly take part and support activities of the school. We maintain close contact with all stakeholders through a wide range of communication channels to keep them abreast of what is going on and how students are progressing in school.

Aspirations for Students

We are recognised and commended by our parents for our consistent success in preparing students academically and personally for each progressive stage of their studies all the way to university and career. We do this through our staunch commitment to help students build their self-confidence, self-worth and positive character that enables them to readily meet new challenges and embrace opportunities they may encounter in the future with courage and optimism.

Creative Schools Continuum

Creative Primary School's Kindergarten,
Creative Primary School

2A, Oxford Road, Kowloon Tong

Tel: 2336 1212 / 2336 0266

Creative Secondary School

3 Pung Loi Road, Tseung Kwan O

Tel: 2336 0233



Know More



CPSKG



CPS



CSS

For Students Aged 3 - 17 Years

Open for Application

THREE SCHOOLS · ONE CONTINUUM · ONE PHILOSOPHY

啓思三校 · 同一理念 · 同一承傳



Paving a brighter future for children with Shepherd Leadership

At Christian Alliance P.C. Lau Memorial International School (CAPCL), Dr Cora Hui, Head of School, hopes to instill in their students qualities like purity, faith and love, to help them become competent, confident, responsible and self-motivated, and to become Christ-like servant leaders who are setting examples in their words and deeds.

CAPCL draws insights and universal principles from the Bible to share with children, explains Dr Hui. "Shepherd Leadership is illustrated in a poem in the book of Psalms as a shepherd leading his sheep through uncertain valleys to the mountain top. In the same way, CAPCL educators and all caregivers see themselves as shepherds who are constantly present and visible to look after their sheep in their pasture, and will lead children through adversity and challenges."

Even amid the pandemic and the need to resort to remote learning, there is a strong emphasis on children's wellness and mindfulness as seen from CAPCL's pastoral programme. Classes are broken down into smaller groups to encourage students to speak out about their emotional and social needs in their learning. Dr Hui believes that learning happens best in a social and safe environment. "Teachers nowadays act as facilitators through Shepherd Leadership and keep a close eye on the sheep, but they also allow the sheep to interact with one another."

Society needs compassion and empathy, stresses Dr Hui, which is why CAPCL not only focuses on IQ and EQ development but also MQ education. "We don't want students to just be intellectually smart without using what they have learned to care for other people; we also want



them to work on building stronger character by differentiating between right and wrong, and actively choosing to follow their moral compass."

The Moral Intelligence Quotient (MQ) is an acquired cognitive ability that can be built up with practice. Dr Hui explains that involves developing an individual's habit in seven areas: empathy, mindfulness, self-control, respect and kindness towards others, tolerance and fairness within the community.

As this holistic approach in moral competency becomes part of their routine, children will grow up to tolerate differences, embrace and celebrate diversity and act fairly, says Dr Hui. "This is a long-term pedagogy, and these habits will be embedded into their lives to build their moral intelligence and to make more informed decisions."

Christian Alliance P.C. Lau Memorial International School

2 Fu Ning Street, Kowloon, Hong Kong

Tel: 2713 3733

Email: info@capcl.edu.hk

Website: www.capcl.edu.hk



Enrollment for
Preparatory to Grade 5
2022-2023
academic year

Learn and Grow in God's Love

Serve and Flourish in God's Grace

學習成長在神愛 服事綻放沐恩光

Welcoming Admissions



Rejuvenated school campus
new school campus, same Christian ethos



Canadian curriculum
Alberta English-Chinese bilingual program
(65% English and 35% Chinese-Mandarin & traditional script)



Christian ethos
cultivate students' character development and servant leadership



Small learning community
develop an engaging learning journey

+852 2713 3733

info@capcl.edu.hk

2 Fu Ning Street, Kowloon, Hong Kong

www.capcl.edu.hk

www.fb.com/CAPCL.HK



Christian Alliance P.C. Lau Memorial
International School
宣道會劉平齋紀念國際學校

Invictus School Hong Kong

Invictus School Hong Kong was established in 2019, with its kindergarten and primary school situated in Tseung Kwan O, and its secondary school in Chai Wan. With both locales being home to plenty of expatriate and local families in Hong Kong, the school is quickly becoming the school of choice for discerning parents in the city. Founded to provide quality and affordable education, Invictus utilises rigorous internationally renowned curricula, to help each child develop a spirit of lifelong learning and excellence. Taking pride in its high-quality and accessible education, Invictus aims to nurture individuals in innovative and inspiring ways to become lifelong learners who contribute to a better tomorrow. Catering for children in K1 to Year 6 (ages 3-11), the modern campus housing Invictus Kindergarten and Invictus School (primary) offers an English / Mandarin bilingual immersion programme.

Fiona Chan (Founding Principal, Invictus Kindergarten) points out that it is one of the few in Hong Kong to use traditional characters for Chinese. "Learning through both languages, in a nurturing and culturally aware environment, is a key part of the Invictus approach", she says. The learning journey takes children through the International Early Years Curriculum (IEYC), International Primary Curriculum (IPC), and Singapore Maths programmes, where each child has his or her own next steps. Christopher Jackson (Founding Principal Invictus School (Primary) sums it up by saying, "We aim to make the curriculum fit the child, not make the child fit the curriculum".

The newly-renovated secondary school campus for Years 7 - 13 (ages 11-18), offers the world renowned Cambridge Curriculum. Beginning with a core foundation of subjects in Year 7, the programme then offers flexibility in subject choices and student strengths, leading up to IGCSEs in Year 11 and A-Levels in Year 13. As in the kindergarten and primary sections, the focus is always on the individual as a learner. The campus is equipped with a wide range



of facilities to support students' learning, including high-tech and environmentally-friendly laboratories, a spacious performance space, and designated drama, music, and art rooms. The Cambridge programme is complemented by an extracurricular one planned by the students themselves. As a through-train school, children who join Invictus at the kindergarten level are also guaranteed a place in the primary and secondary sections. The initial application for any year level is made online without charge, and families are welcomed and encouraged to visit the schools to find out more. Next, children are invited in for an assessment as part of the admissions process. At the kindergarten and primary levels, the assessment looks at age-appropriate language, academic, and social development. At the secondary level, a more formal admissions test is used, including a feedback report. Applications and enrolment can take place all year round.

Looking forward, the school will continue to emphasize the student-focused approach. "For us, holistic education doesn't just mean a wide range of subjects, but to grow the whole child and encourage them to think critically, creatively, and to be a part of society," Chris concluded.

Invictus School Hong Kong

Tseung Kwan O Campus (Kindergarten & Primary)

Monterey Place, 23 Tong Chun Street, Tseung Kwan O

Email: tko@invictus.edu.hk

Tel: 3643 1868

Chai Wan Campus (Secondary)

188 Tai Tam Road, Chai Wan

Email: chaiwan@invictus.edu.hk

Tel: 3852 7200



INVICTUS
SCHOOL HONG KONG
茵維特(香港)學校

**Enrolment opens for 2022-2023
from Nursery to Year 13**

Your Child's Education Journey Begins Here

Affordable Fees

Kindergarten & Primary annual tuition fees: **HKD100,000**

Secondary annual tuition fees: **HKD120,000**



Why Invictus?



**Accessible Premium
Education**



**No Debenture
or Levy**



**Seamless Transfer To
Overseas Invictus Schools**



**Conducive Learning
Environment**



Robust Curriculum
IEYC, IPC, Cambridge Lower
Secondary, IGCSE, A-level



**Central
Location**

Contact us to find out more!

Tseung Kwan O Campus (Kindergarten & Primary)

23 Tong Chun Street, Tseung Kwan O

tko@invictus.edu.hk

+852 3643 1868

www.invictus.edu.hk/tko

Chai Wan Campus (Secondary)

188 Tai Tam Road, Chai Wan

chaiwan@invictus.edu.hk

+852 3852 7200

www.invictus.edu.hk/chaiwan



EDB Registration Numbers:
Kindergarten 615366
Primary 615285
Secondary 616354

The Best Primary School in Hong Kong

Shrewsbury International School Hong Kong draws directly upon the heritage of one of Britain's most outstanding independent schools. Founded by Royal Charter in 1552, Shrewsbury School has an exceptional track record for broad study and academic excellence, and the two schools share aspiration, ideology and a commitment to the cultivation of confident, articulate and independent learners.

Offering an inspirational learning programme for young learners founded upon the English National Curriculum and designed to nurture creativity and confidence, Shrewsbury is just 30 minutes from Central.

"We are a Primary School and the vast majority of benefits our students enjoy stem from this critical distinction: they are the sole occupants of our beautiful campus and the most significant consideration of school leaders and governors." Mr Ben Keeling, Principal

Able to offer a unique range of experiences and opportunities to students and their families, children begin their journey at Shrewsbury in the Early Years at the age of 3. Learning in this phase nurtures creativity, inspires connection and broadens understanding - activities centre upon the development of core social, physical and intellectual skills. Catering for children from the age of 5, learning in the Primary phase grows in complexity as students develop their ability to independently access, interpret and then respond to a series of increasingly sophisticated engagements designed to challenge, engage and inspire.

All students benefit from access to an incredible range of learning spaces designed for young learners and a thematically arranged curriculum that encourages interconnectivity and both critical and creative thinking.

Learning at Shrewsbury is enhanced through the regular engagement of a specialist teaching team and a broad programme of Co-Curricular activity. Chinese



Language, Physical Education, Music and Performing Arts lessons are all delivered by teachers offering subject specific expertise. Extra Curricular Activity, After School Aquatics and the Instrumental Music Programme act to complement, personalise and extend their programme of study. The Co-curricular programme has been designed to support the development of social and leadership skills, perseverance and determination. It also acts to support positive dialogue centred upon personal preferences, motivations and ambitions.

'Our commitment to curriculum enrichment is a commitment to the aspirations of every student. The experiences on offer at Shrewsbury provide each of our students with the attributes to thrive both within their primary years and beyond.' Mr Ben Keeling, Principal

Shrewsbury International School Hong Kong

10 Shek Kok Road, Tseung Kwan O

Tel: 2480 1500

Fax: 2480 1231

Email: admissions@shrewsbury.edu.hk

Website: www.shrewsbury.edu.hk



**SHREWSBURY
INTERNATIONAL
SCHOOL**
HONG KONG



PRIMARY EDUCATION WITHOUT COMPROMISE

Shrewsbury International School Hong Kong nurtures creativity, confidence and a life-long love of learning for children aged between 3 and 11. Offering a programme of study connected to the English National curriculum, we offer outstanding opportunities through primary education and beyond.

The Best Primary School in Hong Kong

Future-proof Education

Wycombe Abbey School Hong Kong iSTEAM teacher Mr. Janjua shares how the subject prepares students for the future.



I find teaching at Wycombe Abbey extremely rewarding and exciting; it is such a pleasure to see the confidence in students develop and it is very satisfying when pupils solve problems in teams and troubleshoot programs using logical reasoning as well as their imagination and creativity.

Besides teaching, I am also involved with Cranfield University in England, where I am undertaking a research project that calculates the performance of a civil airliner which uses cryogenic hydrogen as a fuel and flies on a mission from Hong Kong to London Gatwick airport.

iSTEAM is deeply rooted in developing the skills set necessary in solving difficult problems and overcoming these challenges by constantly striving to be confident and resilient while experiencing the problem-solving process through social and emotional learning.

Students work in teams, and they collaborate and communicate with each other, they endeavor to take risks using their initiative and maintain resilience even when sudden unexpected hurdles arise, they adapt well, students learn to learn and reflect upon their newly gained techniques.

We are extremely well resourced and some of our resources include, Ultimaker and Anycubic 3D printers, Laser cutter, BlueBot robots, Inobot robots, EV3 Mindstorms robotics kits,



WeDo Robotics kits, Raspberry Pi 4's kits, BBC microbit kits, laptops for every student in the iSTEAM class, iPads for each KS1 and KS2 students and Surface Go 2' for each of our KS3 students in the school.

Every student enjoys three iSTEAM lessons per week, where Computer Science concepts are learned and applied, and iSTEAM skills developed.

Wycombe Abbey's highly personalized iSTEAM curriculum is designed around nine thematic areas namely, The Autonomous Future, Communication, The Earth and The Oceans, Self-Expression, Architecture, Transportation, Space, Microsoft Technologies, and Humanity.

iSTEAM also imparts holistic skills through engaging activities that require tinkering, thinking critically, design thinking, using the scientific method, and engineering design.



Wycombe Abbey School Hong Kong

17 Tin Wan Street, Aberdeen, Hong Kong

Tel: 2129 7100

Email: admissions@was.edu.hk

Website: www.was.edu.hk



WYCOMBE ABBEY SCHOOL
HONG KONG



Every Child Can Excel

Your Gateway to UK Senior Schools

- National and ISEB Common Entrance Curriculum
- Strong focus on Chinese with 7 lessons per week
- Award winning Extra Curricular Programme
- Bespoke Secondary School Guidance Programme

Apply Now for 2022-2023

✉ admissions@was.edu.hk

☎ (852) 2129 7100

🌐 www.was.edu.hk



Online Application

Child Led Play the Fairchild Way



Do you ever wonder why children have so many questions? Why is it raining? Why is there a fire door there? Why are you doing that? Just a few questions we heard from children as they played in our engaging indoor treehouse during their discovery time.

Questions help children to learn as they work out things around them. Their world is all about a sense of wonder, exploring new things, experiencing different textures, new discoveries and encounters help pique their curiosity and build their imagination and knowledge in ways we can't quantify. Open-ended free play can support children's own ideas, and build their innate sense of wonder, as well as support them as active learners.

At Fairchild, we cultivate curiosity, creativity and confidence through our inquiry based approach, inspired by the Reggio Emilia philosophy. This supports children's holistic development and learning through following children's genuine interests and through building strong relationships with children and families. We honour each child as an

individual, seeing them as capable and supporting their learning journey through hands-on sensory experiences and natural resources. Children easily build literacy and numeracy skills, as well as their communication, collaboration, creative thinking, but above all, their independence and problem solving skills in a real play based environment.

A child's time at school will involve some structured time in class, working

in small groups, and combined with the creative child led experiences provided by our passionate and experienced teaching team, children's ideas spark questions which sustain and develop their interest and promote further wonder.

The next time your child asks you about a sunflower, you can extend that interest and ask them further questions related to the sunflower. What do they think the seeds can be used for? You might be surprised by exactly how much they actually know! Following a sunflower provocation in our K2 classroom, our student shared with his class that he had visited the flower market, and sunflower seeds can be used to feed parrots, hamsters, and to make sunflower oil! What a great learning experience, what are your wonderings about a sunflower?



Fairchild Kindergarten

G/F & 1/F Kong Chian Tower, Block 1,
351 Des Voeux Road West, Sai Ying Pun, Hong Kong
Tel: 2803 2638

Fairchild Junior Academy

22/F, Park Commercial Centre,
180 Tung Lo Wan Road, Tin Hau, Hong Kong
Tel: 2898 1611



OPEN FOR ADMISSIONS

📍 Tin Hau 📍 Sai Ying Pun
English/Bilingual Kindergarten & Playgroup

- PLAYGROUP
- PRE-NURSERY
- K1-K3



CREATIVITY

CURIOSITY

CONFIDENCE

At Fairchild, the process of inquiry-based learning through play, is inspired by the Reggio Emilia approach which recognises and values each child's potential. Fairchild brings 'the outdoors in' in an urban setting, providing great learning opportunities in natural environments that promote a child's innate instinct to play, inquire and learn. Contact us at info@fairchild.edu.hk (Sai Ying Pun) / info@fairchild.academy (Tin Hau) to book a school tour now.



Fairchild Junior Academy 📍 Tin Hau ☎ 2898 1611 🏠 www.fairchild.academy

Fairchild Kindergarten 📍 Sai Ying Pun ☎ 2803 2638 📷 [fairchild_hongkong](https://www.instagram.com/fairchild_hongkong)



Independence Through the Years



One of the most important tasks for a Montessori teacher (guide) is to foster independence in her students. This crucial skill is taught to children in every community, from early childhood.

Independence in Montessori Together Playgroup (6 to 24 months)

In the first period of life, children are fixated on learning what things are and how they work. Infants are adapting to their surroundings in a physical and factual sense, while building their own sense of self as a capable and valued human being.

Montessori Together Playgroup is an accompanied Montessori-inspired playgroup that offers infants and young toddlers the opportunity to freely explore our prepared environment and engage with curated Montessori materials. Each class includes sensory activities, music and movement, an independent work period and gross motor activities. Children in our Montessori Together program grow to become self-initiated learners and independent thinkers ready to succeed both inside and outside the classroom.



Independence in the Toddler Classroom (2 to 3 years)

When the child enters the Toddler classroom, they enter a world of their own. They receive lessons on dressing themselves, grooming, food preparation, and, ultimately, toilet training. When the child accomplishes these tasks for themselves, you can see the spark in their eyes as well as the smile on their face.

Toddlerhood is a time when the child begins to realise they are a separate being from their guardian. They learn

they can make decisions for themselves, such as when to eat or what lesson to work on. This gives them a sense of purpose and motivation. The daily routine of the classroom is the child's first exposure to time management. They begin to understand that first they work, then go to the playground, then eat a snack, enjoy circle time with other children, and then it is time to go home.



Independence in Children's House (3 to 6 years)

When the child enters Children's House, they are exposed to the world of knowledge. The skills of reading and arithmetic provide the child with a new sense of independence. Now they can choose topics of interest, whether it be writing, science, or art. The guide observes and follows the child, providing appropriate lessons that will engage and motivate him to practice lessons until mastery.

Practical Life lessons are crucial at this age, as they continue to teach children how to take care of themselves as well as the environment. Such lessons might include tying shoelaces, setting a table, or taking care of a class pet.

In the last year of Children's House, the child takes on the important role of being a leader in the classroom. They no longer nap and are able to help the younger ones with lessons.

Independence, the ability to think and do for oneself, is a crucial skill for life, and lies at the heart of a Montessori education. Children leave the Montessori classroom equipped not only with the skills and knowledge to impact the world around them, but also with the confidence to know they can do so. Visit us and discover your confident, capable Montessori child.



guidepost

Give your child the keys to life

Education for independence for children 6 months to 6 years

Guidepost empowers children to understand the world and choose their place within it. We serve children ages 0 to 6 with Montessori Together Playgroup, Toddler Pre-nursery, and Children's House Kindergarten. Extra-curricular programs and parent workshops are offered in selected locations. Visit our website to book a tour.



Guidepost Montessori

Email: hk-admissions@guidepostmontessori.com

Tel: 9126 6211

Locations: Causeway Bay, Chai Wan, Clearwater Bay, Discovery Bay, Kennedy Town, Pok Fu Lam



Playgroup | Pre-nursery | Kindergarten

Causeway Bay · Chai Wan · Clearwater Bay · Discovery Bay · Kennedy Town · Pok Fu Lam

 [guidepost.hk](https://www.guidepost.hk)

 9126 6211



French Preschool and Playgroup

Since 1997

Welcome 15 months - 6 years old

Trilingual Environment: French, English and Chinese
Small and Personalized Class

Multilingual learning for a globalized world

Founded in 1997 in Hong Kong, Lou Pichoun is a French International Preschool with campuses in Stanley and Tseung Kwan O. We welcome children from the Très Petite Section (2-3 years old) to the Grande Section (5-6 years old). Our trilingual preschool curriculum - French, English and Mandarin thoroughly follows the French National Education Official Bulletin and relevant guidelines in terms of programs and objectives. Students can choose between French Stream and International Stream.

"At Lou Pichoun, we pride ourselves on providing a happy and harmonious environment. Our small class size allows more personalized interaction between teachers and children, which helps encourage them to discover, to achieve and build up better self-confidence, with a great deal of arts!" says Veronique Cathely-Leguay, Director of Pedagogy of Lou Pichon.

We organise Mini Pichoun playgroup in French, English and Mandarin in small classes for toddlers between 15-24 months with fun and interactive activities designed to develop your child's emotional, cognitive, physical development and social skills to prepare them for preschool.

Club Pichoun is an after-school program French, English and Mandarin popular for the children between 2 to 6 years old. These language immersion classes are designed to give opportunities for children with or without a French-speaking, English-speaking or Mandarin-speaking family background to perfect their languages through playing, by means of diverse

pedagogical tools aimed at putting what they have learned into practice.

Lou Pichoun Tseung Kwan O campus is an EDB registered kindergarten in the process of getting the AEFÉ certification for its French program. AEFÉ (Agency for French Education Abroad) is the government institution supervised by the French Ministry of Foreign Affairs. It is responsible for monitoring the quality of 500 accredited French schools abroad. Students of this program gain priority to enrol in other AEFÉ schools worldwide.



Lou Pichoun French Kindergarten

Stanley | Tseung Kwan O
Email: info@loupichoun.com
Tel: 2813 4277
Whatsapp: 6304 1021
Website: loupichoun.com



25+ Years
of Experience



Trilingual
Pre-School



French
School System



Emphasis in
Arts



Small
Classes

2022 / 2023 REGISTRATIONS NOW OPEN



JOIN THE FUN!

2813 4277 6304 1021

loupichoun.com info@loupichoun.com

STANLEY | HAPPY VALLEY | TSEUNG KWAN O

Experience Quality Bilingual Canadian Education in TKO!

Maple Bear Canadian International Kindergarten brings the best of Canadian bilingual education to prepare students to succeed in their life. The curriculum is designed and continually updated by our Maple Bear Faculty, early childhood experts from Canada.

At Maple Bear we put emphasis on how valuable play is for young children. Play promotes interacting with people, manipulating objects, and making discoveries that help make sense of the world and learning happens naturally. Play is a crucial part of development of the whole child.

Maple Bear is more than learning a language, the model aims to provide a complete education of the child physically, intellectually, emotionally, and socially, in which three components are fundamental: Creativity, Collaboration and Critical Thinking. "Based on an activity-driven and play-based approach," students learn English and Mandarin using a student-focused language immersion learning system based on Canadian educational pedagogies and best practices.

Students are encouraged to take risks and explore through trial and error with gentle care, we aim to support and develop their young minds to be ready for the world." said Ms. Dipika Kirpalani, Principal at Maple Bear Hong Kong.



"Maple Bear goes beyond classroom learning, and prepares students to be global citizens by giving them the opportunity to connect virtually with other peers worldwide, from 549 Maple Bear schools in 33 countries through the Global Connections for Sustainability Program." We nurture cultural diversity among students and they acquire various skills through exploration, discussion and collaboration centred around the seventeen themes of the United Nations Sustainable Development Goals.

Admissions for PN-K3 for school year 2022/2023 is now open.

Maple Bear Canadian International Kindergarten Hong Kong

Shop 7, G/F Alto Residences, 29 Tong Yin Street,

Tseung Kwan O

Tel: 2813 4887 / 6848 1264

Website: <https://www.maplebear.hk>



MAPLE BEAR

HONG KONG



Maple Bear Canadian International Kindergarten

The best of Canadian education for a global future.
REGISTRATION NOW OPEN

☎ **2813 4887** 📞 **6848 1264**

Shop 7, G/F Alto Residences,
29 Tong Yin Street, Tsueng Kwan O

✉ admissions@maplebear.hk

🌐 [maplebear.hk](https://www.maplebear.hk)



Bring out the best in every child

As the world is rapidly changing, what children face in the future is beyond imagination. Therefore, it is crucial to provide the best education to them so as to cultivate curiosity, develop creativity and boost critical thinking, as well as training them to be enthusiastic lifelong learners and global citizens.

Inquiry education increases students' learning incentives

Traditional education that generally relies on teachers presenting facts is no longer enough. Children must learn how to inquire, investigate and solve problems. In an inquiry-based education, teachers are taking up the role of a facilitator rather than lecturing, they learn with children actively to identify questions, investigate and practise various ways of thinking and problem-solving. These investigations and project-based learning are also done in a small scale and personalized way.

In this way, children can develop their own interest and be empowered to pursue their passion. For instance, in the forest school project of Mulberry House, one cycle was to raise silkworms. In this 8-week project, some children were able to experience companionship and learnt about caring and interacting with living creatures while some children had a better understanding of a life cycle. Some children expressed their love towards the mulberry leaves they fed the silk worms, which provided the idea for teachers to prepare 'growing herbs and small plants' as the theme of lesson for the next cycle.



Innovative education in a bilingual way

As a dual-language school, children at Mulberry House are guided by two native English and Mandarin teachers throughout the day, children effortlessly absorb and immerse in both English and Mandarin Chinese language and culture on a day-to-day basis. Children raise questions about the world in both languages in a multisensory approach. They also acquire knowledge about art, music, science, mathematics and sports in both languages. For instance, in the recent "Inventions" learning cycle, children learned about the history of paper marking. They had the opportunity to go through the whole process to make their own paper (weighed various amounts of cotton and wood, beating them down into pulp, filtering and pressing into actual paper).

In the whole process, some children are more interested in the scale and mathematics. Some children are interested in the art form of paper while others are proud of this Chinese invention dated to the eighth century. The project was co-lead by English and Chinese teachers, hence the whole learning process and concepts were mastered in both languages.

Lots of communities use one dominant language only, but in a unique place like Hong Kong, teachers at Mulberry House are embracing both English and Chinese and strive to cultivate happy and confident international citizens in the enthusiasm of learning. In long term, students can embrace both English and Chinese language and culture.



Mulberry House International Kindergarten

Southside: Shops 1 & 2, G/F, Ocean Court,
3 Aberdeen Praya Road, Aberdeen, HK | +852 5598 0555

Tai Po: LG/F Kindergarten, Mayfair By The Sea I,
23 Fo Chun Road, Tai Po, HK | +852 5598 0909

Website: <https://mulberryhousekg.com/>



Mulberry House
International Kindergarten
懋柏禮國際幼稚園

Raising Bilingual Learners,
Nurturing Global Citizens.
培養雙語學童，孕育世界公民

Bilingual Immersion
英普雙母語 沉浸式教學

Inquiry-Based Learning
探究型學習體驗

Playgroup | Pre-Nursery | Kindergarten
遊戲小組 | 幼兒園 | 幼稚園

For Kids Ages 6 Months to 6 Years
適合六個月至六歲兒童

ADMISSION OPEN NOW

Contact us to arrange a private meeting for the best holistic education plan for your child today!



BOOK NOW!



<https://mulberryhousekg.com/>



admissions@mulberryhousekg.com

Find us on    



Southside : Shops 1 & 2, G/F, Ocean Court, 3 Aberdeen Praya Road, Aberdeen, HK | +852 5598 0555
Tai Po : LG/F Kindergarten, Mayfair By The Sea I, 23 Fo Chun Road, Tai Po, HK | +852 5598 0909



Aim for Excellence, Linking Learning to Life

Childhood education is crucial to shaping a child's personality and future. A child's early years are the foundation for their future development, and school is the place to provide that strong base for lifelong learning and learning abilities, including expanding knowledge and developing cognitive and social skills. Here at Oxbridge, we aim for excellence, linking learning to life and inspiring our students for an exciting future - whatever that may be!

Oxbridge School aims to be the best provider of the British primary curriculum in Hong Kong. We specialise in providing personalised learning in our deliberately small class sizes, in which our highly-skilled, passionate and teaching and support staff deliver high-quality teaching and learning, utilising our forward thinking and inquiry-based curriculum based upon the National Curriculum of England and Wales to every Oxbridge student. Oxbridge School is always filled with knowledge, joy and laughter, and each Oxbridge student discovers a wealth of important experiences, builds lifelong relationships and experiences our bright and modern facilities.

Oxbridge greatly values the well-being of children, especially at this time, and our carefully structured wellbeing programme taught within our lessons and in our assemblies has been much praised by parents. A typical school day at Oxbridge included immersion in various forms of learning activities, physical activity and ECA's. Our personalised education nurtures creativity, confidence, and the personal development of each student. We are also a firm believer in learning in action, and so our students will participate in different school activities and field trips to embrace knowledge beyond the classroom. We encourage students to ask questions and build a critical thinking learning habit, and just as importantly, to enjoy their studies - we very much believe that a happy student is a successful student and that a successful student is an overachieving student. The most rewarding feeling is to see every Oxbridge Student being active, bold, kind and confident, to shine and grow as individuals and to reach their full potential! We're delighted to see our students transform from a curious child into a well-equipped global citizen and heading towards great success in the future!



Oxbridge School

G/F & 1/F, Star Ruby, 1 San Wai Street, Hung Hom
 Tel: 2612 1888
 Email: admissions@oxbridgeschool.hk
 Website: www.oxbridgeschool.hk



Why Oxbridge?

- » British National Curriculum
- » For Children aged 5-11 (Year 1 to Year 6)
- » Support for English as a Second Language
- » Deliberately Small Class Sizes (15 students max)
- » Modest Tuition Fees with No Debuture or Capital Levy
- » A Caring and Inclusive Learning Environment

ADMISSIONS OPEN NOW

For more information, contact us at

6368 0125

admissions@oxbridgeschool.hk

@OxbridgeSchoolHK

Come and explore our "Intelligently British" curriculum and our key values



English Immersion Learning Environment

Personalise learning in small class sizes

Learning in action

Inspiring students for an exciting future

Championing a culture of positive wellbeing

For nearly 45 years, Woodland Pre-Schools has been dedicated to providing young minds with the best start in their developmental journey. Aside from offering quality learning and teaching, Woodland helps children grow socially, emotionally, physically, and developmentally by supporting and promoting their wellbeing.

Nurturing comfortable, happy, and healthy children

At Woodland, the concept of wellbeing is deeply intertwined with the school's mission of affording the best possible experience for each child. Guided by the simple ideal of nothing without joy, the school ensures that children are comfortable, happy, and healthy by creating a safe environment where they can pursue their own interests and engage in activities that bring meaning and purpose.

The Be Well Charter, developed by Cognita Education, lies at the foundation of Woodland's approach to wellbeing. It highlights the six contributors to positive wellbeing, namely the physical contributors of sleep, diet, and exercise, and the mental contributors of connecting, doing, and giving. Based on this framework, Woodland implements various coordinated activities to foster better emotional and mental health among children.



Enhancing wellbeing during COVID-19

Over the past two years, the pandemic has posed significant challenges to the wellbeing of young children. "The shift to online learning means that children are missing out on opportunities to interact and connect with their peers, acquire critical social skills, and enhance language development," Venezia observes.

To effectively cater to children's emotional health needs, Woodland has launched a number of wellbeing initiatives to provide ongoing support to both children and their caregivers during the pandemic. The school's home-based learning programme, for example, offers activities that children and caregivers can complete together to enhance their sense of connection. Wellbeing calls are also conducted every week to allow teachers to check in with each child and their caregiver.

Additionally, Woodland has specifically created a wellbeing podcast featuring conversations with experts in the field to provide caregivers with more information on mental health. Together with the regular publication of wellbeing tips in school newsletters and social media, Woodland ensures that children are well-supported in their wellbeing.



Woodland Pre-Schools

Mid-Levels | Happy Valley | Kennedy Town | Pokfulam |
 Repulse Bay | Sai Kung
Tel: 2526 9478
Email: enquiry@woodlandschools.com
Website: www.woodlandschools.com



Woodland Pre-Schools
 Since 1978

Building Strong Foundations for Future Learning

For nearly 45 years, Woodland Pre-Schools have been carefully building the foundations of independent learning for children 6 months to 6 years old, preparing children step by step for a successful transition into primary school following the English Early Years Foundation Stage with English, Mandarin and Bilingual options.



Enquire Now



Book A Tour



Bilingual Option



Wellbeing Focus



Play-based Inquiry

www.woodlandschools.com | T. +852 2526 9478 | E. enquiry@woodlandschools.com

Mid-Levels | Happy Valley | Kennedy Town | Pokfulam

Repulse Bay Beachside | Sai Kung Marina Cove

1. Rollers
From 6 months to 12 months
2. Wrigglers
From 12 months to 18 months
3. Playgroup
From 18 months to 2 years
4. Stepping Stones
From 2 years to 3 years
5. Pre-Schools
From 2 years 8 months to 6 years
6. Prep for Primary
5 years +



Thinking beyond traditional education to transform learning

The Genius classroom successfully adopts the methodology of project-based learning, which is different from traditional classroom teaching that transfers knowledge from one person to another. Instead, it allows students to explore like a scientist or an engineer. It emphasizes the thinking and development of students, honing their problem-solving skills in the process, developing their ability to acquire new knowledge based on existing knowledge and to apply that knowledge in unfamiliar situations.

To arouse children's curiosity and creativity, the curriculum development team of Genius Development developed more than 200 scientific themes and more than 5000 scientific experiments, covering physics, chemistry, biology, geography and astronomy, catering to the needs of kindergarten, primary, and secondary school students.

Each experiment is a magical journey of discovery for children, and the more they learn, the more fulfilled they feel. When we conduct experiments, which encompass optics,

mechanics, electricity and magnetism, physical, inorganic and organic chemistry, zoology, botany, and much more, we develop scientific knowledge of a particular phenomenon and then we try to relate it to our everyday life. A conceptual framework of knowledge is then built where children gain perceptive insights.

We adopt the most progressive pedagogy that closely follows the syllabuses of international examinations, ensuring that students are acquiring the necessary skills and knowledge for those examinations in science, computers, mathematics, investment and financial management with economics, accounting, business being included, as well as English and Chinese.

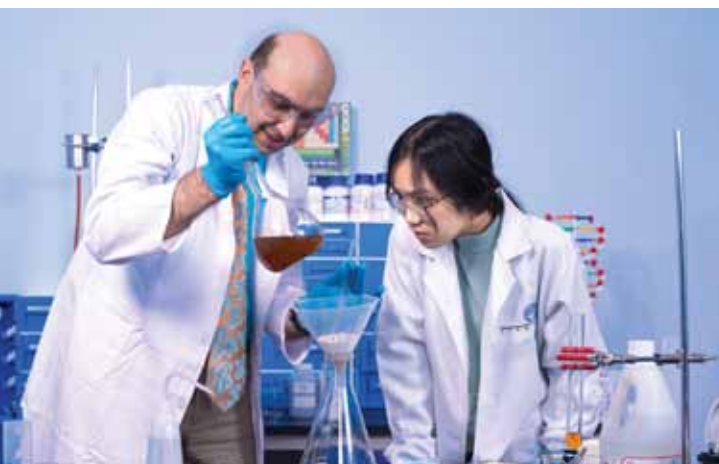
We are endeavouring to awaken children's boundless curiosity and increase their intrinsic motivation in their voyage of scientific exploration.

Learn State-of-the-art Computer Technology at Genius Development

In the last few decades, technological innovations have been so powerful that they have transformed the world in which we are living. Genius Development has a world-class computer curriculum that uses the most innovative teaching and learning methodologies, allowing students to become budding geniuses in computer science and technology.

We want to nurture children when both their curiosity and memory abilities are at their peaks. With hands-on activities designed to help children understand the intricate workings of computers and robotics, coding, apps and web development, blockchain, big data, and much more, Genius Development has everything that your child may want to explore.

Not only do we cover the theory of ICT and computer science that is required in various international exams (IGCSE/IB/AP/SAT/ACT/A-Level, etc.), but we also provide practical activities for children, preparing them to become future computer scientists.



Genius Development

The Peak | Kowloon Tong | Repulse Bay | Cyberport | Redhill | North Point | Hung Hom

Whatsapp: 6979 8858

Website: www.geniusdevelopment.com
www.scientechfuture.com

Discover The Inner Scientist In Your Child



Every human being has a deeply curious nature, and the mission of Genius Development is to unleash the full potential of the InnerScientist in every child.



Genius Development is the largest and the most systematic provider of science and computer education for children and adolescents in Hong Kong. We incorporate innovative ideas and methods into our STEM curriculum, which was developed by experts and educational psychologists, and designed for students at different stages of psychological development. All our teachers are graduates in science-related fields from prestigious universities with unrivalled subject expertise, teaching skills and infectious enthusiasm.



www.geniusdevelopment.com

www.scientechfuture.com



WeChat

WhatsApp

Website

The Peak Campus:	Kowloon Tong:	Repulse Bay Campus1:	Repulse Bay Campus2:	Cyberport Campus:	Redhill Campus:	North Point Campus:	Hung Hom Campus:
Shop 2, G/F, 2-4 Watford Road, The Peak, HK	10 Somerset Road, Kowloon Tong, HK	Shop Nos. 206 and 207B, Level 2, No. 28 Beach Road, Repulse Bay, HK	Shop G205, The Arcade, No. 109 Repulse Bay Road, HK	Shop 401, Shop 404, Shop 406, Shop 412 & Shop 414, No. 100 Cyberport Road, HK	Shop G22, G/F, Redhill Plaza, 3 Red Hill Road, Tai Tam, HK	Shop no.15, Braemar Hill Shopping Center, No.45 Braemar Hill Road, HK	Unit 3H, Kaiser Estate Phase 2, No.47-53 Man Yue St., Hung Hom, HK
Tel: +852 2338 9877 / +852 6351 8779	Tel: +852 2180 9249 / +852 5395 4669	Tel: +852 2330 3770 / +852 9703 0731	Tel: +852 2338 3770 / +852 9703 0731	Tel: +852 2338 9877 / +852 6351 8779	Tel: +852 3169 0136 / +852 6972 8275	Tel: +852 2338 3126 / +852 9703 9663	Tel: +852 2180 9248 / +852 5395 4669



Lee Educational Consulting
傑信國際教育

ONE - STOP ADMISSIONS COUNSELLING

US | UK | HK Universities
US Boarding Schools
Hong Kong International Schools

Our students have entered:



PREMIUM ENGLISH TUTORING

IB | GCSE English & Literature
Foundational English
Jolly Phonics

Within the last 8 years we...

Helped
1000+ Students
enter their dream schools

Helped **10+**
students receive
IBDP 43+

TESTIMONIALS

"LEC's rich experience and excellent work ethic certainly makes them a reliable college consultant who can support students through the entire US application process. Without their guidance, I would not be able to obtain college offers from Princeton, UPenn and Berkeley. They also helped me achieve a predicted 7 in IB English Literature.

Thank you very much for your effort, LEC"

**PRINCETON UNIVERSITY,
CLASS OF 2024**

"We were in a bit of a hurry when I applied to LPCUWC. Luckily, I had the assistance of LEC teachers! They were very professional, hardworking, and even gave up their holiday on Chinese New Year to patiently teach me how to utilise literature to represent my unique traits and characteristics. They also taught me how to be more confident in a serious setting in an interview, I was able to learn a lot from them."

**LI PO CHUN UNITED WORLD COLLEGE,
CLASS OF 2022**

Directory

FREE ASSESSMENT

☎ 2722 7128 📧 ljasonkh

☎ 9416 0798 📱 @leeeducation

📍 705, Star House,
3 Salisbury Road, TST, HK



🌐 <https://www.leeeducation.com/>

ABC Pathways International Kindergarten

Tai Koo Campus
G/F, Block 8&9, Kornhill Garden,
1124 King's Road, Quarry Bay
Tel: 2110 1211

Email: enquiry.tk@ABCpathways.edu.hk

Whampoa Campus

Shop No. 25, G/F, Site 11,
Whampoa Garden, Hung Hom
Tel: 2110 9993

Email: enquiry.wp@ABCpathways.edu.hk

Website: abcpathways.edu.hk

Year founded: 2014

Curriculum: International

Alison's Letterland International Kindergarten

Flat C, 2/F, Marco Polo Mansions,
10 Cleveland Street, Causeway Bay, Hong Kong
Tel: 2504 1978

Email: admin@ais.edu.hk

Website:

www.international-playgroup-kindergarten.com

Year founded: 1996

Curriculum: Early Years Foundation Stage

American International School

125 Waterloo Road, Kowloon Tong, Hong Kong
Tel: 2336 3812

Email: admissions@ais.edu.hk

Website: www.ais.edu.hk

Year founded: 1986

Curriculum: US Common Core State Standards and AP Courses

American School Hong Kong

6 Ma Chung Road, Tai Po, N.T.

Tel: 3919 4111

Email: admissions@ashk.edu.hk

Website: www.ashk.edu.hk

Year founded: 2016

Curriculum: US, IB



Anchors International Nursery

Shop G07B, G/F-2/F, Fuller Gardens,
8 Chui Lok Street, Tai Po

Tel: 2666 5650

Website: www.anchors.edu.hk

Year Founded: 2008

Anchors International Nursery (Constellation Cove Campus)

Kindergarten Premises, Constellation Cove,
1 Hung Lam Drive, Tai Po

Tel: 2650 6660

Website: www.anchors.edu.hk

Anfield International Kindergarten

5 Cumberland Road, Kowloon Tong, Kowloon

Tel: 2794 3668

Email: admin@anfield.edu.hk

Website: www.anfield.edu.hk

Year founded: 1999

Anfield International Kindergarten and Nursery

L2, Phase 1, Laguna Verde,
8 Laguna Verde Avenue, Hunghom, Kowloon

Tel: 2766 3882

Email: admin-lv@anfield.edu.hk

Antonia International Kindergarten

Shop Nos. 31-33, 78-80 & 84-87, LG/F,

Tsuen Wan Garden Phase I,

15-23 Castle Peak Road, Tsuen Wan, New Territories

Tel: 2612 0984

Email: admin@antonia-kindergarten.com

Website: www.antonia-kindergarten.com

Year founded: 2014

Curriculum: Early Years Foundation Stage

Aristle International Kindergarten and Nursery

G/F., Emerald Twenty Eight,

22 & 26 Tai Po Road, Kowloon, Hong Kong

(near intersection of Nathan Road and Boundary Street)

Tel: 2323 2982

Email: info@aik.edu.hk

Website: www.aik.edu.hk

Year founded: 2010

Curriculum: International

Ashville International Kindergarten (Lantau Island)

Shop 1, G/F, Sea Crest Terrace,

19 Mui Wo Ferry Pier Road, Mui Wo, Lantau Island

Tel: 2109 9886

Website: www.kht.edu.hk

Australian International School Hong Kong

3A Norfolk Road, Kowloon Tong

Tel: 2304 6078

Email: info@aishk.edu.hk

Website: www.aishk.edu.hk

Year founded: 1995

Curriculum: Australian National Curriculum, IBDP

Avendale international Kindergarten

Whampoa Campus

3/F Harbourfront Landmark, 11 Wan Ho Street,

Whampoa, Hung Hom, Kowloon

Tel: 3461 3173

Harmony Garden Campus

Kindergarten, Harmony Garden,

9 Siu Sai Wan Road, Siu Sai Wan

Tel: 2866 8260

Email: enquiry@avendale.school

Website: www.avendale.school

Year founded: 2018

Curriculum: Reggio Emilia inspired emergent curriculum

Bambino English Playschool

Causeway Tower, 4/F, Flat F,

16-22 Causeway Road, Causeway Bay, Hong Kong

Tel: 2576 5269

Email: kgtan@netvigator.com

Year founded: 1978

Baumhaus Wan Chai

1/F Kar Yau Building,

36-44 Queen's Road East, Wan Chai

Tel: 2321 5898

Website: www.baumhaus.com.hk

Baumhaus Harbour City

Suite 614-615, World Commerce Centre,

11 Canton Road, Tsim Sha Tsui, Hong Kong

Tel: 3585 8577

Website: www.baumhaus.com.hk

Bloom KKCA Academy

7 Pui Tak Street, Shek Kip Mei

Tel: 2311 2268

Email: admissions@bloom.edu.hk

Website: www.bloom.edu.hk



Blooming Buds Preschool

Unit 7, 1/F, Island Crest, 8 First Street,

Sai Ying Pun, Hong Kong

Tel: 2887 9921

Email: enquiry@bloomingbuds.com.hk

Website: www.bloomingbuds.com.hk

Year founded: 2012

Curriculum: Reggio Emilia Approach and the Creative Curriculum

Box Hill (HK) International Kindergarten & Pre-school

Ma On Shan Campus

G/F, Tower 10, Phase 1, Vista Paradiso,

No. 2 Hang Ming Street, Ma On Shan

Tel: 2750 6323

Email: mos@boxhill.edu.hk

Fo Tan Campus

No. 327 on Podium of Jubilee Square,

2-18 Lok King Street, Fo Tan, New Territories

Tel: 2688 2161

Email: ft@boxhill.edu.hk

Tseung Kwan O Campus

Shop 2 & 3, Level G/F & 1/F, Mount Verdant,

48 Chui Ling Road, Tseung Kwan O, New Territories

Tel: 2623 0023

Email: tko@boxhill.edu.hk

Website: www.boxhill.edu.hk

Year founded: 2004

Curriculum: Early Years Foundation Stage

Brightland International Kingdergarten

Shop 1, Wing A, Block A, Tak Nga Court,
2 Hiu Wan Road, Tai Po

Tel: 2651 3311

Email: info@brightland.edu.hk

Website: brightland.edu.hk

Year Founded: 2016

British Council International Pre-School

1/F, British Council, 3 Supreme Court Road, Admiralty

Tel: 2913 5290

Email: preschool@britishcouncil.org.hk

Website: www.britishcouncil.hk

Year founded: 2016

Curriculum: Other

Canadian International School of Hong Kong

36 Nam Long Shan Road, Aberdeen

Tel: 2525 7088

Email: schoolinfo@cdnis.edu.hk

Website: www.cdnis.edu.hk

Year founded: 1991

Curriculum: IB and OSSD

California School

3/F, Front Block, Lung Ma Building,

550 Nathan Road, Yau Ma Tei

Tel: 2388 9844 / 9822 7549

Email: info@californiaschool.edu.hk

Website: www.californiaschool.edu.hk

Year founded: 1992

Curriculum: IGCSE, A-Levels

Cannan Kindergarten (Whampoa Garden)

Portion of G/F, Commercial Podium,

Site 10, Whampoa Garden, Hung Hom

Tel: 2330 3336

Website: www.cannan.edu.hk

Year Founded: 1997

Carmel School

10 Borrett Road, Mid-Levels

Tel: 2964 1600

Email: brcadmin@carmel.edu.hk

Website: www.carmel.edu.hk

Year founded: 1991

Cherish English School & Kindergarten

Shop KG01, G/F & M/F, Sai Wan Estate,
East Terrace, Kennedy Town

Tel: 2855 0080

Website: www.cherish.edu.hk

Year Founded: 1988

Chinese Academy

77 Caroline Hill Road, Causeway Bay, Hong Kong

Tel: 2499 8000

Email: enquiry@caps.edu.hk

Website: www.caps.edu.hk

Year founded: 2017

Curriculum: Primary: Bilingual Immersion in English & Chinese (Putonghua);
Secondary: IB MYP, IB DP

Chinese International School

1 Hau Yuen Path, Braemar Hill, North Point

Tel: 2510 7288

Email: cis_info@cis.edu.hk

Website: www.cis.edu.hk

Year founded: 1983

Curriculum: Primary: balanced and integrated dual language curriculum in both English and Chinese;
Secondary: IBMYP & IBDP. In Year 10, students study the IB MYP in our satellite campus in Hangzhou (CIS Hangzhou)

Christian Alliance International School

33 King Lam Street, Lai Chi Kok, Kowloon

Tel: 3699 3862 / 3699 3863 / 3699 3865

Email: admissions@caisbv.edu.hk

Website: www.caisbv.edu.hk

Facebook: @cais.hk

Instagram: @caisbv



Christian Alliance P.C. Lau Memorial International School

2 Fu Ning Street, Kowloon, Hong Kong
Tel: 2713 3733

Email: info@capcl.edu.hk
Website: www.capcl.edu.hk
Curriculum: Canada's Alberta Curriculum



Concordia International School

68 Begonia Road, Yau Yat Chuen
Tel: 2789 9890

Email: office@concordiaintl.edu.hk
Website: www.cih.s.edu.hk
Year founded: 1990
Curriculum: North American

Creative Kindergarten

G/F, 6 Rutland Quadrant, Kowloon Tong
Tel: 2336 1139

Website: www.creative.edu.hk
Year Founded: 1984

Creative School Continuum

Creative Primary School's Kindergarten, Creative Primary School

2A Oxford Road, Kowloon Tong, Kowloon, HK
Tel: 2336 1212 / 2336 0266

Email: cps@creativeprisch.edu.hk
Website: www.creativeprisch.edu.hk

Creative Secondary School

3 Pung Loi Road, Tseung Kwan O, Sai Kung
Tel: 2336 0233

Email: admin@css.edu.hk
Website: www.css.edu.hk
Year founded: 2006
Curriculum: HKDSE, IBMYP, IBDP



Dalton School Hong Kong

G/F, Imperial Cullinan, 10 Hoi Fai Road, Kowloon
Tel: 3612 4660

Email: info@dshk.edu.hk
Website: www.dshk.edu.hk
Year founded: 2017
Curriculum: US Common Core Standards, Own
Website: www.boxhill.edu.hk
Year founded: 2004
Curriculum: Early Years Foundation Stage

David Exodus Kindergarten

Upper Ground Podium, Block 4,
 Julimount Garden, Tai Wai, Shatin, N.T.

Tel: 2699 0100
Website: www.davidexodus.edu.hk
Year founded: 1989

Curriculum: Own

Deborah Educational Institute:

Deborah International Pre-school / Play school (Tseung Kwan O)

Kindergarten Tower, Bauhinia Garden,
 11 Tong Chun Street, Tseung Kwan O
Tel: 3403 4393

Curriculum: International
Deborah International Pre-school / Play-school (Hung Hom)

1/F, Site 2 and G/F, Site 7,
 Whampoa Garden, Hung Hom, Kowloon
Tel: 2362 8379 (Site 2) / 2774 1669 (Site 7)

Curriculum: International / Japanese International

Delia Memorial School (Glee Path)

1-3 Glee Path, Mei Foo Sun Chuen, Kowloon

Tel: 2741 5239
Email: gp@deliagroup.edu.hk
Website: www.deliaip.edu.hk
Curriculum: HKDSE, IBDP

Delia School of Canada

5-7, Tai Fung Avenue, Tai Koo Shing
Tel: 3658 0400

Email: admissions@delia.edu.hk
Website: www.delia.edu.hk
Year founded: 1987
Curriculum: Ontario Curriculum / Alberta Curriculum, Canada

Diocesan Boys School Primary Division & Diocesan Boys School

131 Argyle Street, Mongkok, Kowloon
Tel: 2711 5191

Email: dbsadmin@dbs.edu.hk
Website: www.dbs.edu.hk
Year founded: 1869
Curriculum: HKDSE, IBDP

Diocesan Girls' School

1 Jordan Road, Kowloon
Tel: 2277 9100

Email: info@dgs.edu.hk
Website: www.dgs.edu.hk
Year founded: 1860
Curriculum: HKDSE, A-Levels

Discovery Bay International School

Discovery Bay, Lantau Island

Tel: 2914 2142 (Kindergarten) / 2987 7331 (Primary / Secondary)

Email: dbis@dbis.edu.hk
Website: www.dbis.edu.hk

Year founded: 1983
Curriculum: British National Curriculum and International Primary Curriculum

Discovery Mind Kindergarten/ International Play Centre

Discovery Bay Campus

401, Marina Commercial Centre, G/F,
 2-8 Coastline Villa, Peninsula Village, Discovery Bay
Tel: 2987 8088

Email: dmk@discoverymind.edu.hk
Tung Chung Campus

G/F, Seaview Crescent,
 No. 8 Waterfront Road, Tung Chung
Tel: 2987 8070

Email: dmtc@discoverymind.edu.hk

Discovery Mind Primary School

Discovery Bay Campus

1/F, Shop 102, 92 Siena Avenue,
 North Plaza, Discovery Bay
Tel: 2914 2202

Email: admission_db@discoverymind.edu.hk
Tung Chung Campus

G/F, Shop A-D Seaview Crescent,
 No. 8 Waterfront Road, Tung Chung
Tel: 2915 0666

Email: admission_tc@discoverymind.edu.hk
Website: www.discoverymind.edu.hk
Year founded: 2012
Curriculum: IPC

Discovery Montessori Academy

Block 1, 92 Siena Ave, Discovery Bay,
 Lantau Island, Hong Kong

Tel: 2812 9206
Email: primary@dms.edu.hk
Website: www.dms.edu.hk
Year founded: 2015
Curriculum: Montessori

Discovery Montessori School

Discovery Bay Campus

Shop 101, 1/F, 92 Siena Avenue,
 Discovery Bay, Lantau Island, Hong Kong
Tel: 2987 1201

Email: enquiry@discoverymontessori.info

Central Campus

3/F, Mandarin Building, 34-43 Bonham Strand,
 Central, Hong Kong

Tel: 2850 8006
Email: enquiry@dms.edu.hk
Website: www.dms.edu.hk

Year founded: 2010
Curriculum: Montessori

EIS International Preschool

No.1 San Wai Tsuen, San Tin, Yuen Long
Tel: 2889 7680 / 2889 7681

Fax: 2889 7331
Email: info@eminent-education.org

Website: www.emient-education.org
IG/Facebook: theeminenteducation

Year founded: 2020
Curriculum: EYFS, Nature-based Preschool

Elsa High School, Carmel School Association

460 Shau Kei Wan Road, Shau Kei Wan

Tel: 3665 5388
Email: elsahighschool@carmel.edu.hk

Website: www.carmel.edu.hk
Year founded: Carmel School Association was founded in 1991 and Elsa High School was established in 2009
Curriculum: International Baccalaureate

English Schools Foundation

25/F, 1063 King's Road, Quarry Bay, Hong Kong
Tel: 2574 2351

Email: info@esfcentre.edu.hk
Website: www.esf.edu.hk
Year founded: 1967

ESF Abacus International Kindergarten

1A Mang Kung Uk Road, Clearwater Bay
Tel: 2719 5712

Email: kinder@abacus.edu.hk
Website: www.abacus.edu.hk
Year founded: 2002
School Type: Private
Curriculum: IB Primary Years Programme

ESF Beacon Hill School

23 Ede Road, Kowloon Tong

Tel: 2336 5221
Email: bhs@bhs.edu.hk
Website: www.beaconhill.edu.hk
Year founded: 1967

School Type: ESF
Curriculum: IB Primary Years Programme

ESF Bradbury School

43C Stubbs Road, Happy Vally
Tel: 2574 8249

Email: enquiries@bradbury.edu.hk
Website: www.bradbury.edu.hk

Year founded: 1992
School Type: ESF
Curriculum: IB Primary Years Programme

ESF Clearwater Bay School

DD 229, Lot 235, Clearwater Bay Road, Clearwater Bay

Tel: 2358 3221
Email: info@cwbs.edu.hk
Website: www.cwbs.edu.hk
Year founded: 1980
School Type: ESF
Curriculum: IB Primary Years Programme

ESF Discovery College

38 Siena Avenue, Discovery Bay, Lantau Island
Tel: 3969 1000

Email: office@dc.edu.hk
Website: www.discovery.edu.hk
Year founded: 2007
School Type: Private
Curriculum: IB Primary Years Programme, IB Middle Years Programme, IB Diploma

ESF Glenealy School

7 Hornsey Road, Mid Levels
Tel: 2522 1919

Email: enquiry@glenealy.edu.hk
Website: www.glenealy.edu.hk
Year founded: 1959
School Type: ESF
Curriculum: IB Primary Years Programme

ESF Hillside International Kindergarten

43B Stubbs Road, Mid-Levels East

Tel: 2540 0066
Email: kinder@hillside.edu.hk
Website: www.hillside.edu.hk

Year founded: 1999
School Type: Private
Curriculum: IB Primary Years Programme

ESF Island School

20 Borrett Road, Mid Levels

(permanent campus currently under redevelopment)
Temporary campuses:

Island School Sha Tin Wai (Years 7, 8, 12, 13)
Island School Tai Wai (Years 9, 10, 11)

Estate Secondary School No. 2, Sun Chui Estate, Sha Tin

Tel: 2524 7135
Email: school@online.island.edu.hk

Website: www.island.edu.hk
Year founded: 1967
School Type: ESF
Curriculum: GCSE/IGCSEs, IB Diploma, Applied Learning Programme (BTEC qualifications)

ESF Jockey Club Sarah Roe School

2B Tin Kwong Road, Homantin

Tel: 2761 9893
Email: info@jcsrs.edu.hk

Website: www.jcsrs.edu.hk
Year founded: 1985
School Type: ESF
Curriculum: Primary Learning Programme, ASDAN Award Programme, Transition Challenge Programme, Towards Independence Challenge

ESF Kennedy School

19 Sha Wan Drive, Pokfulam
Tel: 2579 5600
Email: admissions@kennedy.edu.hk
Website: www.kennedy.edu.hk
Year founded: 1961
School Type: ESF
Curriculum: IB Primary Years

ESF King George V School

2 Tin Kwong Road, Homantin
Tel: 2711 3029
Email: office@kgv.edu.hk
Website: www.kgv.edu.hk
Year founded: 1902
School Type: ESF
Curriculum: GCSE/IGCSEs, IB Diploma, Applied Learning Programme (BTEC qualifications)

ESF Kowloon Junior School

20 Perth Street, Homantin, Kowloon, Hong Kong
Tel: 3765 8700
Email: office@kjs.edu.hk
Website: www.kjs.edu.hk
Year founded: 1902
School Type: ESF
Curriculum: IB Primary Years Programme

ESF Peak School

20 Plunketts Road, The Peak
Tel: 2849 7211
Email: office@peakschool.net
Website: www.ps.edu.hk
Year founded: 1911
School Type: ESF
Curriculum: IB Primary Years Programme

ESF Quarry Bay School

6 Hau Yuen Path, Braemar Hill, North Point
Tel: 2566 4242
Email: office@qbs.edu.hk
Website: www.qbs.edu.hk
Year founded: 1926
School Type: ESF
Curriculum: IB Primary Years Programme

ESF Sha Tin College

3 Lai Wo Lane, Fo Tan, Sha Tin
Tel: 2699 1811
Email: info@shatincollege.edu.hk
Website: www.shatincollege.edu.hk
Year founded: 1982
School Type: ESF
Curriculum: IGCSE, IB Diploma

ESF Sha Tin Junior School

3A Lai Wo Lane, Fo Tan, Sha Tin, New Territories
Tel: 2692 2721
Email: info@sjs.esf.edu.hk
Website: www.sjs.edu.hk
Year founded: 1988
School Type: ESF
Curriculum: IB Primary Years Programme

ESF South Island School

50 Nam Fung Road, Aberdeen, Hong Kong
Tel: 2555 9313
Email: sis@sis.edu.hk
Website: www.sis.edu.hk
Year founded: 1977
School Type: ESF
Curriculum: GCSE/IGCSEs, IB Diploma, IB Career-related Programme, Applied Learning Programme (BTEC qualifications)

ESF Tsing Yi International Kindergarten

Maritime Square, 33 Tsing King Road, Tsing Yi
Tel: 2436 3355
Email: admissions@tyk.edu.hk
Website: www.esf.edu.hk
Year founded: 1999
School Type: Private
Curriculum: IB Primary Years Programme

ESF Tung Chung International Kindergarten

1/F, Commercial Accommodation, The Visionary, 1 Ying Hong Street, Tung Chung, Lantau, N.T.
Tel: 3742 3500
Email: kinder@tc.esf.org.hk
Website: www.tck.edu.hk
Year founded: 2016
School Type: Private
Curriculum: IB Primary Years Programme

ESF West Island School

250 Victoria Road, Pok Fu Lam, Hong Kong
Tel: 2819 1962
Email: wis@wis.edu.hk
Website: www.wis.edu.hk
Year founded: 1991
School Type: ESF
Curriculum: GCSE/IGCSEs, IB Diploma, Applied Learning Programme (BTEC qualifications)

ESF Wu Kai Sha International Kindergarten

Level 1, Lake Silver Tower, 599 Sai Sha Road, Ma On Shan
Tel: 2435 5291
Email: kinder@wksk.edu.hk
Website: www.wksk.edu.hk
Year founded: 2009
School Type: Private
Curriculum: IB Primary Years Programme

EtonHouse International Pre-School

LG/F Kindergarten, Mayfair By The Sea I, 23 Fo Chun Road, Tai Po
Tel: 2780 5700
Email: enquiry@etonhouse.com.hk
Website: www.etonhouse.com.hk
Year founded: 1995
Curriculum: Inquiry based Reggio Emilia inspired curriculum

Fairchild Junior Academy

22/F, Park Commercial Centre, 180 Tung Lo Wan Road, Tin Hau, Hong Kong
Tel: 2898 1611
Email: info@fairchild.academy
Website: www.fairchild.academy
Year founded: 2016
Curriculum: Canadian Early Learning Framework

Fairchild Kindergarten

G/F & 1/F, Kong Chian Tower, Block 1, 351 Des Voeux Road West, Sai Ying Pun, Hong Kong
Tel: 2803 2638
Email: info@fairchild.edu.hk
Website: www.fairchild.edu.hk
Year founded: 2017
Curriculum: Canadian Early Learning Framework and Hong Kong Kindergarten Education Curriculum Guide

**Forest House Waldorf School**

Commercial Development Floral Villas, 18 Tso Wo Road, Sai Kung
Tel: 2792 6055
Email: info@foresthous.edu.hk
Website: www.waldorf.edu.hk
Year founded: 2014
Curriculum: Waldorf

French International School

Blue Pool Road Campus
 165 Blue Pool Road, Happy Valley
Chai Wan Campus
 1 Cheung Man Road, Chai Wan, Hong Kong
Jardine's Lookout Campus
 34 Price Road, Jardine's Lookout, Hong Kong
Tseung Kwan O Campus
 28 Tong Yin Street, Tseung Kwan O, N.T.
Tel: 2577 6217
Email: info@lfs.edu.hk
Website: www.fis.edu.hk
Year founded: 1963
Curriculum: English National Curriculum to IGCSE then IBDP; French National Curriculum

Funful Group Of Schools

Kindergarten Section
 No.20 Durham Road, Kowloon Tong, Hong Kong
Tel: 2337 6883
Email: kln20funful@yahoo.com.hk
Website: www.kindergarten.funful.hk/
Primary Section
 1 Cumberland Road, Kowloon Tong, Hong Kong
Tel: 2338 3434
Email: office@fsris.edu.hk
Website: www.fsris.edu.hk

Galilee International School – Kindergarten & Nursery

1/F Peace Garden, 2 Peace Avenue, Ho Man Tin, Kowloon
Tel: 2390 3000
Email: gis@gis.edu.hk
Website: www.gis.edu.hk
Year founded: 2014
Curriculum: International Baccalaureate (Primary Years Programme)

Garden House Pre-school and Playgroup

G/F, Silverstrand Shopping Centre, 7 Silverstrand Beach Road, Clearwater Bay
Tel: 2358 1177
Email: info@gardenhouse.edu.hk
Website: www.gardenhouse.edu.hk
Year founded: 2008
Curriculum: Waldorf

German Swiss International School

Main Campus (Primary & Secondary)
 11 Guildford Road, The Peak
Tel: 2849 6216
Pok Fu Lam Campus (Kindergarten & Lower Primary)
 162 Pok Fu Lam Road, Pok Fu Lam, Hong Kong
Tel: 2849 6217
Email: info@gsis.edu.hk
Website: www.gsis.edu.hk
Year founded: 1969
Curriculum: GSIS is a multi-language through-train school, from Kindergarten to Secondary, operating two parallel streams - the German International Stream and the English International Stream - following curricula that respectively lead to the German International Abitur Diploma and the International Baccalaureate (IB) Diploma following IGCSE examinations in Year 11

Gigamind English Primary School

Block A, 9 Tin Lung Road, Phase 6, Maywood Court, Kingswood Villas, Tin Shui Wai, N.T.
Tel: 2446 9883
Email: info@gigamind.edu.hk

Gigamind Kindergarten & Children's House

Block B, 9 Tin Lung Road, Phase 6, Maywood Court, Kingswood Villas, Tin Shui Wai, N.T.
Tel: 2446 9210
Email: kginfo@gigamind.edu.hk
Website: www.gigamind.edu.hk
Year founded: 2001
Curriculum: Own

Good Time Play School

Fanling Centre
 G/F Block A & B, Fanling Centre Phase 1, 33 San Wan Road, Fanling
Tel: 2677 8109
Website: www.goodtime.edu.hk
Sha Tin Plaza
 Level 4, Block C & D, Sha Tin Plaza, Sha Tin
Tel: 2601 3278
Website: www.goodtime.edu.hk
Year Founded: 1986

Grace Garden International Nursery and Kindergarten

Shop GA 12B – 14, G/F, Site A, 55 Tai Hong Street, Lei King Wan, Sai Wan Ho (MTR Station Exit A)
Tel: 2702 9778
Whatsapp: 6100 8339
Email: enquiry@gracegarden.edu.hk
Website: www.gracegarden.edu.hk
Year founded: 2015
Curriculum: Early Years Foundation Stage

Greenfield English (International) Kindergarten

The Long Beach
 Unit 1 Kindergarten Area UG/F, 8 Hoi Fai Road, The Long Beach, West Kowloon
Tel: 3514 8081
Website: www.greenfield.edu.hk
Year Founded: 2011

Tung Chung

Podium, 1/F, Caribbean Bazaar, Caribbean Coast, 1 Kin Tung Road, Tung Chung, Lantau Island
Tel: 2162 5538
Website: www.greenfield.edu.hk

Lohas Park

Kindergarten Site, Hemera, Lohas Park III, Tseung Kwan O
Tel: 2246 4801
Website: www.greenfield.edu.hk
Year Founded: 2016

Sheung Ning Road

Shop A-B, G/F & 1/F, The Kindergarten Building, On Ning Garden, 10 Sheung Ning Road, Tseung Kwan O
Tel: 2701 2808

Mont Vert

The Kindergarten, Mont Vert, 9 Fung Yuen Road, Tai Po
Tel: 3907 0178
Website: www.greenfield.edu.hk

Guidepost Montessori**Kennedy Town Campus**

1-2/F, 554 – 560 Queen's Road West,
Sai Wan, Hong Kong

Tel: 3619 1136

Email: kennedytown@guidepostmontessori.com

Chai Wan Campus

Harmony Garden, 9 Siu Wai Wan Road,
Siu Wai Wan, Hong Kong

Tel: 2866 8260

Email: chaiwan@guidepostmontessori.com

**Hamilton Hill International Kindergarten**

UG/F, Ching Wah Mansion,
No. 1-3 Ching Wah Street, North Point

Tel: 3461 9750

Email: admissions@hhik.edu.hk

Website: www.hhik.edu.hk

Year founded: 2015

Curriculum: International

Han Academy

G/F-2/F, 33-35 Wong Chuk Hang Road, Aberdeen

Tel: 3998 6300

Email: admission@hanacademy.edu.hk

Website: www.hanacademy.edu.hk

Year Founded: 2017

Curriculum: Cambridge (Primary, Secondary, IGCSE, A Level), IBDP (candidate school)

Harrow International School Hong Kong

38 Tsing Ying Road, Tuen Mun

Tel: 2824 9099

Email: admissions@harrowschool.hk

Website: www.harrowschool.hk

Year founded: 2012

Curriculum: International

Highgate House School

2/F, 100 Peak Road, The Peak

Tel: 2849 6336

Website: www.highgatehouse.edu.hk

Year founded: 1992

Curriculum: Waldorf

HKCA Po Leung Kuk School

62 Tin Hau Temple Road, Hong Kong

Tel: 3465 8400

Email: info@plkis.edu.hk

Website: www.plkis.edu.hk

Year Founded: 2017

Curriculum: IBPYP

Hong Kong Academy

33 Wai Man Road, Sai Kung

Tel: 2655 1111

Email: admissions@hkacademy.edu.hk

Website: www.hkacademy.edu.hk

Year founded: 2000

Curriculum: IBPYP, IBMYP, IBDP

**Hong Kong Adventist Academy**

1111 Clear Water Bay Road, Sai Kung

Tel: 2623 0034

Email: info@hkaa.edu.hk

Website: www.hkaa.edu.hk

Year founded: 2011

Curriculum: Local curriculum with electives from the American curriculum

Hong Kong Chinese Christian Churches Union Logos Academy**Campus I**

No. 5, Ling Kwong Street, Tseung Kwan O, N.T.

Tel: 2337 2126

Campus II

No. 1, Kan Hok Lane, Tseung Kwan O, N.T.

Tel: 2337 2123

Email: info@logosacademy.edu.hk

Website: www.logosacademy.edu.hk

Year founded: 2011

Curriculum: HKDSE, IBDP

Hong Kong International Learning Academy

Unit 7 & 8G Office Block One, North Plaza,

92 Siena Avenue, Discovery Bay

Tel: 2416 3198

Email: hkilacademy@gmail.com

Website: https://www.studyhkila.com

Hong Kong International School**Tai Tam Campus**

1 Red Hill Road, Tai Tam

Tel: 3149 7000

Repulse Bay Campus

23 South Bay Close, Hong Kong

Tel: 2812 5000

Email: admissions@hkis.edu.hk

Website: www.hkis.edu.hk

Year founded: 1966

Curriculum: American with Advanced Placement courses offered in High School

Hong Kong Man Sang Kindergarten**Western District**

Shop A, G/F & 1/F, Nice Garden,
513-519 Queen's Road West

Tel: 2336 3232

Website: www.mansangkg.edu.hk

Year Founded: 2016

North Point

2/F Foo Yet Kai Building, 52-60 Java Road,
North Point

Tel: 2578 6763

Website: www.mansangkg.edu.hk

Year Founded: 1969

Email: admission@mansangkg.edu.hk

Hong Kong Nobel Preschool

G/F-2/F, 65 Waterloo Road, Kowloon

Tel: 2338 7899

Website: www.nobelpreschool.org

Year Founded: 2015

International Christian School**Shek Mun Campus**

1 On Muk Lane, Shek Mun

Tel: 3920 0000

Ma On Shan Campus (International Kindergarten)

G/F, Kam Ho House (Block H),
Kam Fung Court, Ma On Shan, Shatin, N.T.

Email: ics@ics.edu.hk

Website: www.ics.edu.hk

Year founded: 1991

Curriculum: American, AP

International College Hong Kong (Secondary)

60 Sha Tau Kok Road, Shek Chung Au, Sha Tau Kok

Tel: 2655 9018

Email: info@ichk.edu.hk

Website: www.ichk.edu.hk

Year founded: 1984

Curriculum: IBPYP, English, IGCSE, IBDP

International College Hong Kong Hong Lok Yuen (Kindergarten & Primary)

3, Twentieth Street, Hong Lok Yuen, Tai Po

Tel: 3955 3000

Email: info@ichkhly.edu.hk

Website: www.ichk.edu.hk

Year founded: 1984

Curriculum: IBPYP, English, IGCSE, IBDP

Invictus School Hong Kong**Tseung Kwan O Campus (Kindergarten & Primary)**

Monterey Place, 23 Tong Chun Street, Tseung Kwan O

Tel: 3643 1868

Email: tko@invictus.edu.hk

Chai Wan Campus (Secondary)

188 Tai Tam Road, Chai Wan

Tel: 3852 7200

Email: chaiwan@invictus.edu.hk

Website: www.invictus.edu.hk

**Island Children's Montessori Kindergarten****Tin Hau Campus**

Units B & C, LG/F & UG/F,
16 Tin Hau Temple Road, Tin Hau

Lei King Wan Campus

Shop GC 19-21 Site C, Tai Hong Street, Lei King Wan

Tel: 3421 9100

Email: admissions@icms.edu.hk

Island Christian Academy

70 Bridges Street, Sheung Wan

Tel: 2537 2552

Email: office@islandca.edu.hk

Website: www.islandca.edu.hk

Year founded: 2012

Curriculum: IPC

Island Montessori International Kindergarten**North Point Campus**

Commercial Unit, G/F, Bedford Gardens,
151-173 Tin Hau Temple Road, North Point, HK

Tel: 3427 9100

Email: info@icms.edu.hk

Website: www.icms.edu.hk

Year founded: 2010

Curriculum: Montessori

Lei King Wan Campus

Shop GC 19-21, G/F, Lei King Wan,
Site C, 35 Tai Hong Street, Sai Wan Ho

Tel: 2562 8500

Website: http://icms.edu.hk

Year Founded: 2012

Island Waldorf School of Hong Kong

G/F 71-77 Smithfield, Kennedy Town, Hong Kong

Tel: 5114 1451

Email: info@iwshk.org

Website: www.iwshk.org

Year Founded: 2017

Curriculum: Waldorf

Italian International Kindergarten

Podium Level 1, Block 4, Phase 1,
South Horizons, Ap Lei Chau, Hong Kong

Tel: 2662 3066

Email: info@iikg.edu.hk

Website: www.iikg.edu.hk

Year Founded: 2019

Japanese International School (International Section)

4663 Tai Po Road, Tai Po

Tel: 2834 3531

Email: esinfo@jis.edu.hk

Website: es.jis.edu.hk

Year founded: 1997

Curriculum: IB Primary Years Programme

Kellett School**Kowloon Bay Preparatory and Senior Campus**

7 Lam Hing Street, Kowloon Bay

Po Fu Lam Preparatory Campus

2 Wah Lok Path, Wah Fu, Pok Fu Lam, Hong Kong

Tel: 3120 0700

Email: admissions@kellettschool.com

Website: www.kellettschool.com

Year founded: 1976

Curriculum: English National Curriculum including IGCSE and A-level

Kendall International Preschool

G/F, Residence 228, 228 Fuk Wing Street,
Cheung Sha Wan, West Kowloon, Hong Kong

Tel: 2328 8223

Email: info@kendallpreschool.edu.hk

Website: www.kendall.edu.hk/

Year Founded: 2017

Curriculum: Own

Kiangsu & Chekiang Primary School & Kiangsu-Chekiang College (International Section)**Lower School**

30 Ching Wah Street, North Point, Hong Kong

Tel: 2570 4594

Upper School

20 Braemar Hill Road, North Point

Tel: 2570 1281

Email: inter@kcis.edu.hk (Primary)

Email: inter2@kcis.edu.hk (Secondary)

Website: www.kcis.edu.hk

Year founded: 1993

Curriculum: Early Years Foundation Stage (EYFS);

British National Curriculum; IB Diploma

Kingston International Kindergarten and Children Centre

G/F & 1/F, 12-14 Cumberland Road, Kowloon Tong

Tel: 2337 9049

Email: enquiry@kingston.edu.hk

Website: www.kingston.edu.hk

Curriculum: IB Primary Years Programme

Kingston International School**Lower Primary Campus**

113 Waterloo Road, Kowloon Tong, Kowloon

Tel: 2337 9031

Upper Primary Campus

105 Waterloo Road, Kowloon Tong, Kowloon

Tel: 2337 9012

Email: enquiry@kingston.edu.hk

Website: www.kingston.edu.hk

Curriculum: IB Primary Years Programme

Kohitsuji Kindergarten

Shop 1, G/F, Site 10, Whampoa Garden, Hung Hom

Tel: 2330 6677

Website: www.kohitsujiyouchien.com

Year Founded: 2013

Kornhill International Nursery (Kornhill Anglo Chinese Kindergarten)

G/F, 16 Hong Shing Street, Kornhill, Quarry Bay, HK
Tel: 2884 4186
Email: admin@kornhill-edu.com
Website: www.kornhill-edu.com
Year Founded: 1986
Curriculum: Teaching Strategies. The Creative Curriculum for Preschool

Korean International School

55 Lei King Road, Sai Wan Ho, Hong Kong
Tel: 2569 5500
Email: admissions@kis.edu.hk
Website: www.kis.edu.hk
Curriculum: IPC, UK, IGCSE, A-Levels, Korean

Kowloon Baptist Church Kindergarten

2/F, 300 Junction Road, Kowloon Tong, Kowloon
Tel: 2336 6213
Email: kbck@netvigator.com
Website: www.kbck.edu.hk
Year founded: 1975
Curriculum: Own

Kowloon Cannan Anglo-Chinese Kindergarten

G/F, 28B Grampian Road, Kowloon Tong
Tel: 2336 2096
Website: www.cannan.edu.hk
Year Founded: 1983

Lantau International School

Cheung Sha Campus
 No. 22, Upper Cheung Sha Village, Lantau Island, Hong Kong
Tel: 2984 0302
Tong Fuk Campus
 House 113, Tong Fuk Village, Lantau, Hong Kong
Tel: 2980 3676
Pui O Campus
 No. 17-19, Lo Wai Tsuen, Pui O, Lantau Island, Hong Kong
Tel: 2984 0302
Email: lisadmin@lis.edu.hk
Website: www.lis.edu.hk
Year founded: 1995
Curriculum: British Curriculum

La Petite Enfance Kindergarten

Units 5, 6 & 8, LG/F, Office Block One, 92 Siena Avenue, Discovery Bay, Lantau Island
Tel: 8191 0813
Website: www.ecole-discovery.com

Leapfrog Kindergarten and Playgroup

11 Pak Tam Chung Village, Sai Kung Country Park, Sai Kung
Tel: 2791 1540
Email: admim@leapfrogkindergarten.org
Website: www.leapfrogkindergarten.org
Year founded: 1992
Curriculum: EYFS

Learning Habitat Kindergarten

Hampton Loft Campus
 Shop 2, 5/F Hampton Loft, 11 Hoi Fan Road, Tai Kok Tsui
Tel: 2501 5105
Website: www.learninghabitat.org
Year Founded: 2005
Papillons LP Campus
 Shop 12, 15 & 16, G/F Papillons Square, 21 Tong Chun Street, Tseung Kwan O
Tel: 2363 3005
Website: www.learninghabitat.org
Year Founded: 2010

Les Petits Lascars – Maternelle Française Hong Kong Kids Academy Int'l Preschool

Central Campus
 2 & 3/F, Wellington Plaza, 56-58 Wellington Street, Central
Tseung Kwan O Campus
 G01, Capri Place, 33 Tong Yin Street, Tseung Kwan O
Wong Chuk Hang Campus
 Units 306-307, 3/F, One Island South, 2 Hung Yip Road, Wong Chuk Hang
Tel: 2526 8666
Email: admissions@petitslascars.com
Website: hkkidsacademy.edu.hk/les-petits-lascars
Year founded: 2006
Curriculum: French

Li Po Chun United World College

10 Lok Wo Sha Lane, Sai Sha Road, Shatin
Tel: 2640 0441
Email: office@lpcuwc.edu.hk
Website: www.lpcuwc.edu.hk
Year founded: 1992
Curriculum: IBDP

Little Dalton Kindergarten

Hong Kong Island Campus
 KG01, Wah Sin House, Wah Kwai Estate, Pok Fu Lam
Tel: 2792 2566
Email: info@littledalton.com
West Kowloon Campus
 G/F, Imperial Cullinan, 10 Hoi Fai Road, Kowloon
Tel: 3612 5760
Email: infoic@littledalton.com
Website: www.littledalton.com
Year founded: 2013
Curriculum: Own

Little Lantau Montessori Kindergarten

Unit 12 & 13, G/F, Silverview Centre, 8 Ngan Kwong Wan Road, Mui Wo, Lantau Island
Tel: 3689 7033

Lou Pichoun French International Preschool Hong Kong

Tseung Kwan O Campus
 1A-2A, G/F, Alto Residences, 29 Tong Yin Street, Tseung Kwan O
Tel: 2813 4277 / 6304 1021
Website: www.loupichoun.com
Lou Pichoun Stanley Campus
 1/F, 5 Stanley New Street, Stanley, Hong Kong
Tel: 2813 2456
Happy Valley Campus
 G/F Door C, 22 Fung Fai Terrace, Hong Kong
Tel: 2813 2456
Email: info@loupichoun.com
Website: www.loupichoun.com
Year founded: 1997
Curriculum: French, Own



Ludus Kindergarten

2/F, Le Billionnaire, 46 Sa Po Road, Kowloon City
Tel: 2382 0061
Website: www.ludus.edu.hk
Year Founded: 2015

MAGART International Kindergarten

Whampoa Campus
 Shop G3A, Site 7, Whampoa Garden, 9 Tak On Street, Hong Kong
Tel: 2786 9314 / 2788 0788
WhatsApp: 9879 1509
Email: info.wp@magartedu.com
Tai Koo Campus
 Shop B, UG/F, Park Vale, No. 1060 King's Road, Hong Kong
Tel: 2786 9152 / 2786 9189
WhatsApp: 6717 3175
Email: info.tk@magartedu.com
Fanling Campus
 G/F, Phase 1, Fanling Centre, New Territories, Hong Kong
Tel: 2677 8109
WhatsApp: 9445 8322
Email: info.fl@magartedu.com
Year Founded: 2018
Curriculum: Enhanced EYFS, Reggio Emilia and inquiry approach

Malvern College Hong Kong

3 Fo Chun Road, Pak Shek Kok, New Territories
Tel: 3898 4688
Email: admissions@malverncollege.org.hk
Website: www.malverncollege.org.hk
Year founded: 2018
Curriculum: IB

Malvern College Pre-School Hong Kong Island West

G/F & 1/F Viking Court, 165-166 Connaught Road West, Sai Ying Pun, Hong Kong
Tel: 3898 4670
E-mail: iw-office@malvernpreschool.hk
Coronation Circle
 Units 9-12, Coronation Circle, 1 Yau Cheung Road, Southwest Kowloon
Tel: 3898 4660
E-mail: office@malvernpreschool.hk
Website: www.malvernpreschool.hk

Maple Bear Canadian International Kindergarten Hong Kong

Shop 7, G/F, Alto Residences, 29 Tong Yin Street, Tseung Kwan O
Tel: 2813 4887 / 6848 1264
Email: admissions@maplebear.hk
Website: www.maplebear.hk



MASS International Preschool

Shop 2, G/F & LG/F, Lai Tak Plaza, Tai Hang Road, Causeway Bay
Tel: 3955 1588
Email: info@masspreschool.edu.hk
Website: www.masspreschool.com
Year founded: 2012
Curriculum: Other

Mighty Oaks Nursery & Kindergarten

1/F, Lungga Mansion, 46A Belcher's Street, Kennedy Town, Hong Kong
Tel: 2806 8383
Email: info@mightyoaks.edu.hk
Website: www.mightyoaks.edu.hk
Year founded: 2015
Curriculum: Early Years Foundation Stage

Ming Wai International Kindergarten

Flat A & B, G/F & 1/F, Alice Court, 10-12 Tsat Tsz Mui Road, North Point
Tel: 2561 5008
Website: www.mingwai.edu.hk
Year Founded: 1982
North Point Branch
 Shop 1 G/F & 1/F, Fairview Court, 5-13 Tsat Tsz Mui Road, North Point
Prince Edward Branch
 Shop 6 of G/F & Flat 1-5 of 1/F, Kenwood Mansion, 15 Playing Field Road, Prince Edward
Tel: 2522 2688

Mills International Preschool

The Spectacle, 8 Cho Yuen Street, Yau Tong, Kowloon, Hong Kong
Tel: 2717 6336
Email: preschool@millsinternational.edu.hk
Website: www.millsinternational.edu.hk
Year founded: 2013
Curriculum: Early Years Foundation Stage

Mink International Pre-School

Level 1, Sun Hing Garden, Tai Po, New Territories
Tel: 2665 4333
Website: www.mink.edu.hk
Year Founded: 1986

Montessori for Children

House A, Phoenix Garden, RBL 1033 Tai Tam Village, Stanley, Hong Kong
Tel: 2813 9589
Email: hongkong@montessori.edu.sg
Website: www.montessori.edu.sg
Year founded: 1986
Curriculum: Montessori

Mori Lisa International Kindergarten

Level 5 Flat Roof, Block 7, Greenwood Terrace, Chai Wan
Tel: 3176 1236
Email: info@morilisa.hk
Website: www.morilisa.hk
Year founded: 2014
Curriculum: Early Years Foundation Stage

Morningstar Preschool and Kindergarten

Block 2, G/F, Chi Fu Fa Yuen, Pok Fu Lam
Tel: 6993 7157
Email: hello@morningstarschools.com
Website: www.morningstarpreschool.com.hk
Year founded: 2011
Curriculum: International

Mui Wo OWLS School & Kindergarten

1/F, Unit A, Silver Centre Building,
Mui Wo Ferry Pier Road, Mui Wo, Lantau
Tel: 2984 0006
Email: office@muiwoowlsschool.edu.hk
Website: www.muiwoowlsschool.edu.hk
Year founded: 2010
Curriculum: English

Mulberry House International Kindergarten

Southside Campus
Shops 1 & 2, G/F, Ocean Court,
3 Aberdeen Praya Road, Aberdeen, HK
Tel: 5598 0555

Tai Po Campus

LG/F Kindergarten, Mayfair By The Sea I,
23 Fo Chun Road, Tai Po, HK
Tel: 5598 0909

Website: https://mulberryhousekg.com/

**Munsang College Kindergarten**

G/F-1/F, Block A & G/F-2/F, Block F,
8 Dumbarton Road, Kowloon City
Tel: 3655 3500
Website: www.munsang.edu.hk
Year Founded: 1926

Mynors International Kindergarten

Portion A, Commercial Unit, Shop 1-11,
1/F Belair Monte Shopping Centre,
3 Ma Sik Road, Fanling
Tel: 2355 7500
Website: www.mynors.hk

Nord Anglia International School Hong Kong

Primary & Secondary Campus
11 On Tin Street, Lam Tin, Kowloon
Pre-school
Red Hill Plaza, Red Hill Road, Tai Tam, Hong Kong
Pre-school
285 Hong Kin Road, Tui Min Hoi, Sai Kung, N.T.
Tel: 3958 1428
Email: admissions@nais.hk
Website: www.nais.hk
Year founded: 2014
Curriculum: English, IGCSE, IBDP

Norwegian International School Kindergarten Campus

175 Kwong Fuk Road, Tai Po
Tel: 2638 0269
Email: kinder@nis.edu.hk
Primary School Campus
170 Kam Shan Road, Kam Shan Village, Tai Po
Tel: 2658 0341
Email: office@nis.edu.hk
Website: nis.edu.hk
Year founded: 1984
Curriculum: IPC, UK Literacy Curriculum, Australian Mathematics Curriculum

Oisca Japanese Kindergarten

G/F Ming Yuen Mansion, 26-48 Peacock Road, North Point
Tel: 2775 5899
Website: www.oisca-youchien.ne
Year Founded: 1986

Oxbridge School

G/F B & 1F, Star Ruby, 1 San Wai Street,
Hung Hom, Kowloon
Tel: 2612 1888
Email: admissions@oxbridgeschool.hk
Website: www.oxbridgeschool.hk

**Parkview International Pre-School Hong Kong Island Campus**

Tower 18, Parkview,
88 Tai Tam Reservoir Road, Hong Kong
Tel: 2812 6023
Email: pipsinfo@pips.edu.hk
Year founded: 1989
Curriculum: International Baccalaureate (IB)
Kowloon Campus
Podium Level, Kowloon Station,
1 Austin Road West, Kowloon
Tel: 2812 6801
Email: pipsinfo-kl@pips.edu.hk
Website: www.pips.edu.hk
Year founded: 2007
Curriculum: International Baccalaureate (IB)

Parkview Rhine Garden Preschool

Tower 1, 1st Floor, Rhine Garden,
38 Castle Peak Road, Sham Tseng, N.T.
Tel: 2491 1082
Email: school@pipsrg.edu.hk
Year founded: 1994
Curriculum: International Baccalaureate (IB)

Parkview-Rhine Garden International Nursery

Tower 5, 1Podium Level 2, Rhine Garden,
38 Castle Peak Road, Sham Tseng, N.T.
Tel: 2496 2080
Email: school@pipsrg.edu.hk
Website: pipsrg.edu.hk
Year founded: 1994

Po Leung Kuk Choi Kai Yau School

6 Caldecott Road, Piper's Hill, Kowloon
Tel: 2148 2052
Email: info@cky.edu.hk
Website: www.cky.edu.hk
Year founded: 2002
Curriculum: Own, IGCSE, IBDP

Pods Kindergrten & Preschool Tin Hau Campus

11 Tin Hau Temple Road, Tin Hau, Hong Kong
Tel: 3460 3560
Harbour Heights Campus
G01B & 1/F, Harbour Heights,
1 Fook Yum Road, North Point, Hong Kong
Tel: 2242 2261
Email: info@pods.com.hk
Website: www.pods.com.hk
Year founded: 2013
Curriculum: Own

Renaissance College ESF

5 Hang Ming Street, Ma On Shan
Tel: 3556 3556
Email: admissions@rchk.edu.hk
Website: www.rchk.edu.hk
Year founded: 2006
School Type: Private
Curriculum: IB Primary Years Programme, IB Middle Years Programme, IB Diploma, IB Career-related Programme

Rightmind International Nursery & Kindergarten

Shum Wan Campus
G/F, Broadview Court, No. 11 Shum Wan Road, Hong Kong
Tel: 2795 1018
South Horizons Campus
UG/F, Tower 26-28, South Horizons, Phase 4, Ap Lei Chau
Tel: 2875 0452
Email: parentservice@kinderu.org
Website: www.rmkg.org
Year founded: 1980
Curriculum: Other

Rosebud Primary School

UG 28-37 Waterside Plaza, 38 Wing Shun Street, Tsuen Wan
Tel: 2406 7300
Email: info@rosebud.edu.hk
Website: www.rosebud.edu.hk
Year Founded: 2004
Curriculum: IPC

Safari Kid International Kindergarten Happy Valley Campus

16 Min Fat Street, Happy Valley, Hong Kong
Tel: 2177 0001
Email: happyvalley@safarikidasia.com
Pok Fu Lam Campus
L101 Chi Fu Landmark, Chi Fu Fa Yuen, Pok Fu Lam
Tel: 2177 0001
Email: infohk@safarikidasia.com
Website: www.safarikidasia.com
Year founded: 2005
Curriculum: Other

Sai Kung International Pre-school

159 Che Keng Tuk Road, Sai Kung
Tel: 2791 7354
Email: skip@skip.edu.hk
Website: skip.edu.hk
Year founded: 1989
Curriculum: Early Years Foundation Stage

Sai Kung Montessori

Unit SB, 787 Tan Cheung, Po Tung Road, Sai Kung
Tel: 5369 8587
Email: info@saikungmontessori.com
Website: www.saikungmontessori.com
Year Founded: 2017
Curriculum: Montessori

Saint Bright International Kindergarten

G/F & 1/F, Cameron Mansion,
29-31 Lion Rock Road, Kowloon City
Tel: 2337 5255
Website: www.stbrigt.edu.hk
Year Founded: 2014

Sear Rogers International School Tseun Wan Campus

Portion A, Podium E, 4/F, Riviera Gardens, Tsuen Wan
Tel: 2547 5479
Email: enquiry@sris.edu.hk
Website: www.sris.edu.hk
Year founded: 1982
Curriculum: English, IGCSE, A-Levels

SDM-Chatsworth International Kindergarten & Nursery

166 Boundary Street, Kowloon Tong
Tel: 2560 3322
Email: info@sdm-chatsworth.hk
Website: www.sdm-chatsworth.hk
Year Founded: 2017
Curriculum: Singapore-based curriculum

Shrewsbury International School Hong Kong

10 Shek Kok Road, Tseung Kwan O, New Territories
Tel: 2480 1500
Email: admissions@shrewsbury.edu.hk
Website: www.shrewsbury.edu.hk
Year founded: 2018
Curriculum: English National Curriculum

**Singapore International School Preparatory Years and Primary Section**

23 Nam Long Shan Road, Aberdeen
Tel: 2872 0266
Email: general@singapore.edu.hk
Secondary Section
2 Police School Road, Wong Chuk Hang, Hong Kong
Tel: 2919 6966
Email: secondary@singapore.edu.hk
Website: www.singapore.edu.hk
Year founded: 1991
Curriculum: Singapore curriculum, IGCSE, IBDP

Small World Christian Kindergarten

10 Borrett Road, Mid-Levels
Tel: 2525 0922
Email: office@smallworld.edu.hk
Website: smallworld.edu.hk
Year founded: 1986
Curriculum: International

Spanish Primary School

130 Shuen Wan Chan Uk Tai Po, N.T., Hong Kong
Tel: 3955 1588
Email: info@spis.com.hk
Website: www.spis.com.hk

St. Catherine's International Kindergarten

Campus 1

1 Essex Crescent, Kowloon Tong
Tel: 2337 7273
Website: www.stcatherines.edu.hk
Year Founded: 1970

Campus 2

4 & 6 Norfolk Road, Kowloon Tong
Tel: 2337 7344 / 2337 7680
Website: www.stcatherines.edu.hk
Year Founded: 1970

St. Catherine's Kindergarten (Harbour Place)

1/F Harbour Place, 8 Oi King Street, Hung Hom
Tel: 2670 6600
Website: www.stcatherines.edu.hk
Year Founded: 2011

St. Paul's Covent School (Secondary Section)

140 Leighton Road, Causeway Bay, Hong Kong
Tel: 2576 0601
Website: www.spcs.edu.hk
Year founded: 1854
Curriculum: HKDSE, IGCSE, A-Levels

St. Stephen's College

22 Tung Tau Wan Road, Stanley, Hong Kong
Tel: 2813 0360
Email: sschk@ssc.edu.hk
Website: www.ssc.edu.hk
Year founded: 1903
Curriculum: IBDP, HKDSE

Stamford American School Hong Kong

25 Man Fuk Road, Ho Man Tin
Tel: 2500 8688
Email: admissions@sais.edu.hk
Website: www.sais.edu.hk
Year founded: 2017
Curriculum: Inquiry-based American
Curriculum with AERO and Common Core Plus Standards

Sunshine House International Pre-school Chi Fu Campus

G/F, Block 1, Fu Lai Yuen, Chi Fu Fa Yuen,
 1 Chi Fu Road, Pok Fu Lam
Tel: 2551 3781
Email: chifu@sunshinehouse.com.hk

Clearwater Bay Campus

Level 7, Silverstrand Mart,
 No. 2 Silver Cape Road, Clearwater Bay, Sai Kung
Tel: 2358 3803
Email: clearwaterbay@sunshinehouse.com.hk

Discovery Bay Campus

Shop 106, 1/F, Blk 6, Discovery Bay North Development,
 Discovery Bay, Lantau Island
Tel: 2259 4066
Email: dbay@sunshinehouse.com.hk

Pok Fu Lam Campus

Commercial Development Block A, Pok Fu Lam
 Gardens
Tel: 2551 3213
Email: pokfulam@sunshinehouse.com.hk

Tung Chung Campus

No. 2 Mei Tung Street,
 Tung Chung Crescent, Lantau Island
Tel: 2109 3873
Email: tungchung@sunshinehouse.com.hk
Website: www.sunshinehouse.com.hk
Year founded: 1990
Curriculum: Other

The Harbour School

Harbour Village (Kindergarten Campus)

23 Belcher's Street,
 2/F Kennedy Town Center, Kennedy Town

The Grove (Primary Campus)

332 Ap Lei Chau Bridge Road, Ap Lei Chau

The Garden (Secondary Campus)

138 Lee Chi Road, Ap Lei Chau
Tel: 3612 1090
Email: admissions@ths.edu.hk
Website: www.ths.edu.hk

Year founded: 2007

Curriculum: American

The International Montessori School of Hong Kong

Aldrich Bay Campus

G/F, i-UniQ Grand, 155 Shau Kei Wan Road,
 Shau Kei Wan, Hong Kong
Tel: 2156 9033
Email: admin.ab@ims.edu.hk

Mid-Level Campus

Mezzanine Entrance, Tung Fai Gardens,
 17 Po Yan Street, Sheung Wan, Hong Kong
Tel: 2857 7007
Email: admin.ml@ims.edu.hk

South Horizons Campus

G/F, Blocks 23 to 23A, South Horizons,
 Phase III, Ap Lei Chau, Hong Kong
Tel: 2861 0339
Email: admin.sh@ims.edu.hk

Stanley Campus

Phase III, Ma Hang Estate,
 Stanley (off Stanley Plaza), Hong Kong
Tel: 2566 7196
Email: admin.st@ims.edu.hk
Website: www.ims.edu.hk

Year founded: 2002

Curriculum: Montessori

The ISF Academy

1 Kong Sin Wan Road, Pokfulam, Hong Kong
Tel: 2202 2028
Email: admissions@isf.edu.hk
Website: academy.isf.edu.hk

Year founded: 2003

Curriculum: Own, IBMYP, IBDP



The ISF Pre-School

Shop G01, G/F, 97 Belcher's Street,
 Kennedy Town, Hong Kong
Tel: 2559 8518
Email: psenquiry@isf.edu.hk

Website: preschool.isf.edu.hk

Year founded: 2015

Curriculum: Other

The Woodland Montessori Academy (Caine Road)

G/F -3/F, On Fung Building,
 110-118 Caine Road, Mid-Levels
Tel: 2549 1211
Email: montessoricr@woodlandschools.com

The Woodland Pre-School

Repulse Bay Montessori Campus

Shop G118-G119, G/F,
 The Repulse Bay, 109 Repulse Bay Road
Tel: 2803 1885
Email: beachside@woodlandschools.com

Beachside (Repulse Bay) Campus

35 Beach Road, Repulse Bay
Tel: 2812 0274
Email: beachside@woodlandschools.com

Kennedy Town Campus

G/F, 1/F & 2/F, Hau Wo Building,
 3C Davis Street, Kennedy Town
Tel: 2817 2011
Email: kennedytown@woodlandschools.com

Pokfulam Campus

Shop 29, G/F, Commercial Complex,
 Wah Fu Estate II, Pokfulam
Tel: 2551 7177
Email: pokfulam@woodlandschools.com

Harbourside Campus

G/F, Ocean Court, 3 Aberdeen Praya Road, Aberdeen
Tel: 2559 1377
Email: whs@woodlandschools.com

Happy Valley Campus

G/F, 2 Hawthorn Road, Happy Valley
Tel: 2575 0042
Email: happyvalley@woodlandschools.com

Sai Kung Campus

Shop D, G/F, Marina Cove Shopping Centre,
 Sai Kung, New Territories
Tel: 2813 0290
Email: saikung@woodlandschools.com
Website: www.woodlandschools.com

Year Founded: 1978

Curriculum: Early Years Foundation Stage of the British National Curriculum and Montessori learning approaches



Think International Academy

11 Kwong Lee Road, Cheung Sha Wan
Tel: 2157 2111
Email: think_ta@think.edu.hk
Website: www.think.edu.hk
Year founded: 2016
Curriculum: IBPYP, Cambridge CIE Secondary 1 & 2, IBDP

Think International School

117 Boundary Street, Kowloon Tong, Kowloon
Tel: 2338 3949
Email: think_tis@think.edu.hk

Think International Kindergarten

Kowloon Tong Campus

5 Lincoln Road, Kowloon Tong
Tel: 2338 0211
Email: thinkkg_kt@think.edu.hk

Laguna Campus

99 Cha Kwo Ling Road G/F, Kowloon
Tel: 2727 4747
Email: thinkkg_lc@think.edu.hk

Ma On Shan Campus

Level 2, Sunshine Bazaar,
 628 Sai Sha Road, Ma On Shan, New Territories
Tel: 2633 7800
Email: thinkkg_mos@think.edu.hk

Mei Foo Campus

The Podium, Nob Hill, 8 King Lai Path, Mei Foo,
 Kowloon
Tel: 2727 7585
Email: thinkkg_mf@think.edu.hk
Website: www.think.edu.hk
Year founded: 2003
Curriculum: Other

Topkids International Kindergarten (Yuen Long)

G/F (part of) & 1/F, Shing Fat Building,
 14 Yuen Long Tai Cheung Street, Yuen Long
Tel: 2447 2669
Website: www.topkids.edu.hk

Tsim Sha Tsui Funful International Kindergarten

No. 136 Nathan Road, Tsim Sha Tsui, Kowloon
Tel: 2311 3883 / 2311 4707
Website: www.funful.hk
Year founded: 1969
Curriculum: Local, International

Tutor Time International Nursery & Kindergarten

Kowloon Tong – Dorset Crescent

No. 1 Dorset Crescent, Kowloon Tong
Tel: 2573 9188
Kowloon Tong – Suffolk Road

Mid Level – Caine Road

Shop A-B, G/F, Botanical Court,
 5 Caine Road, Mid-Levels, Hong Kong
Tel: 2529 1188
North Point – Braemar Hill

LG/F & G/F Braemar Hill Shopping Center,
 45 Braemar Hill Road, Hong Kong
Tel: 3529 1833
Yuen Long – Yoho

Shop G011, Ground Level and Mezzanine Level,
 Yoho Mall 1, No. 9 Yuen Lung Street,
 Yuen Long, N.T.
Tel: 2392 8188
Email: info@tutortime.com.hk
Website: www.tutortime.com.hk

Year founded: 2001

Umah International Primary School

Fung Chi Tsuen, Wang Chau, Yuen Long, N.T.
Tel: 2618 3172 / 2450 5401
Email: umahdin@umahhk.com
Website: umahhk.com
Year founded: 1996
Curriculum: Own

Victoria Shanghai Academy

19 Shum Wan Road, Aberdeen
Tel: 3402 1000
Email: enquiries@vsa.edu.hk
Website: www.vsa.edu.hk
Year founded: 2004
Curriculum: IBPYP, IBMYP, IBDP

Victoria Education Organisation

Belcher Campus
Podium of Level 3 (Kindergarten Area),
The Westwood, 8 Belcher's Street, Hong Kong
Tel: 2542 7001
Email: bgvkoffc@victoria.edu.hk

Causeway Bay Campus
32 Hing Fat Street, Causeway Bay, Hong Kong
Tel: 2578 9998
Website: www.cbvictoria.edu.hk

Harbour Green Campus
G/F, Harbour Green, 8 Sham Mong Road, Kowloon
Tel: 2885 1928
Email: hgvk@victoria.edu.hk

Harbour Heights Campus
Ko Fung Court, Harbour Heights,
5 Fook Yum Road, North Point, Hong Kong
Tel: 2571 7888
Email: hhvnoff2@victoria.edu.hk

Homantin Campus
1/F, Carmel-on-the-Hill, 9 Carmel Village Street,
Homatin, Kowloon
Tel: 2762 9130
Email: hmttoffc@victoria.edu.hk

Lower Kornhill Campus
2-8 Hong On Street, Kornhill, Hong Kong
Tel: 2885 3331
Email: lkvkoffc@victoria.edu.hk

Middle Kornhill Campus
2/F, No. 18 Hong On Street, Kornhill, Hong Kong
Tel: 2885 1888
Email: mkvkoffc@victoria.edu.hk

South Horizons Campus
Phase II, Podium Level,
South Horizons, Hong Kong
Tel: 2580 8633
Email: shvkoffc@victoria.edu.hk

Upper Kornhill Campus
G/F, 14 Hong Yue Street, Kornhill, Hong Kong
Tel: 2513 1208
Email: ukoffc@victoria.edu.hk
Website: www.victoria.edu.hk
Year founded: 1965
Curriculum: IBPYP, TCRWP

Wellborn International Pre-school

G/F, Nursery Block,
Chevalier Garden, Ma On Shan
Tel: 2642 6033
Website: www.wellborn.edu.hk

Wilderness International Kindergarten

Ground Floor, Po Tak Mansion,
85 Smithfield Rd, Kennedy Town, Hong Kong
Tel: 2595 9066
Email: admissions@wilderness.asia
Website: www.wilderness.asia
Year founded: 2016

Wycombe Abbey School Hong Kong

17 Tin Wan Street, Aberdeen, Hong Kong
Tel: 2129 7100
Email: admissions@was.edu.hk
Website: www.was.edu.hk
Year Founded: 2019
Curriculum: National Curriculum for England

**Yew Chung International School (YCIS)**

Secondary Section
3 To Fuk Road, Kowloon Tong
Primary Section (3 campuses)

- 2 Kent Road, Kowloon Tong
- 11 Kent Road, Kowloon Tong
- 22 Somerset Road, Kowloon Tong

Early Childhood Education (5 campuses)

- 29 Kent Road, Kowloon Tong
- 151 Waterloo Road, Kowloon Tong
- 3 Somerset Road, Kowloon Tong
- 20 Somerset Road, Kowloon Tong
- Savannah Place, 3 Chi Shin Street, Tseung Kwan O

Tel: 2338 7106
Email: admissions@ycef.com
Website: www.ycis-hk.com
Year founded: 1932
Curriculum: International curriculum, IGCSE,
IB Diploma Programme

**YMCA of Hong Kong Christian International Kindergarten (West Kowloon)**

Lower Ground Floor, No. 373 Po On Road,
Cheung Sha Wan, Kowloon
Tel: 2281 6089
Email: christianikgwk@ymcahk.org.hk
Website: www.bc.ymcahk.org.hk
Year founded: 2011
Curriculum: EYFS, Own

YMCA of Hong Kong Christian College

12 Chung Yat Street, Tung Chung, Lantau
Tel: 2988 8123
Email: info@ymcacc.edu.hk
Website: www.ymcacc.edu.hk
Year founded: 2003
Curriculum: HKDSE, IGCSE, A-Levels

YMCA of Hong Kong International Kindergarten

2/F, 41 Salisbury Road, Tsim Sha Tsui, Kowloon
Tel: 2268 7766
Email: kindergarten@ymcahk.org.hk
Website: www.ymcaikg.edu.hk
Year founded: 2003
Curriculum: EYFS, Own

York International Pre-School (Hong Kong)

1/F & 2/F, Tsui King Court,
18 Water Street, Sai Ying Pun
Tel: 2368 7038
Website: www.york.edu.hk

York International Kindergarten

51 Cumberland Road, Kowloon Tong
Tel: 2336 1483
Website: www.york.edu.hk
Year Founded: 1979

York International Pre-School

G/F & 1/F, 14 Stafford Road, Kowloon Tong
Tel: 2339 0728
Website: www.york.edu.hk
Year Founded: 2012

York Montessori International Pre-School (Yuen Long)

G/F, Commercial Accommodation,
No. 18 Castle Peak Road Tam Mei,
Kam Tin, Yuen Long
Tel: 3485 9268
Website: www.york.edu.hk

Zebedee International Kindergarten & Nursery

G/F Yat Wing House,
Yat Nga Court, Nam Wan Road, Tai Po
Tel: 2650 3339
Email: admin@zebedee.edu.hk
Website: www.zebedee.edu.hk
Year founded: 2008
Curriculum: Early Years Foundation Stage

Zenith Kindergarten (Kowloon Tong)

G/F & 1/F, No. 6 Kent Road, Kowloon Tong
Tel: 2337 3818
Website: www.zenith.edu.hk
Year Founded: 2010

Ace Academy

1305 Universal Trade Center, 3 Arbuthnot Road,
Central
Tel: 2523 5533
Email: info@AceAcademy.com
Website: www.AceAcademy.com

Aegis Advisors

16/F Vulcan House, 21-23 Leighton Road, Causeway
Bay
Tel: 8175 5687
Email: inquiries@aegis-advisors.com
Website: aegis-advisors.com

Babington Education

Hang Hau Centre
Shop UG19, Maritime Bay Shopping Centre,
18 Pui Shing Road, Tseung Kwan O
Tel: 9146 0800
WhatsApp: 9146 0800
Email: HH@babington.edu.hk
Website: https://zh.babington.edu.hk/nt-locations/
hang-hau

Tiu Keng Leng Centre

Shop C2A, LG2 Phase 3, Ocean Shores, 88 O King
Road, Tseung Kwan O
Tel: 5629 9832
WhatsApp: 5629 9832
Email: TKL@babington.edu.hk
Website: https://zh.babington.edu.hk/nt-locations/
tiu-keng-leng

Tseung Kwan O Centre

Shop G1D, G/F, The Parkside, 18 Tong Chun Street,
Tseung Kwan O
Tel: 96351518
WhatsApp: 9635 1518
Email: TKO@babington.edu.hk
Website: https://zh.babington.edu.hk/nt-locations/
tseung-kwan-o

Bright English Education Centre

1/F Shop 17A, The Papillons Square,
21 Tong Chun Street (Tseung Kwan O MTR A2 exit)
Tel: 9315 2168/3568 6293
WhatsApp: 6034 4166
Email: bright@bright.edu.hk
Website: http://www.bright.edu.hk/zh/home/

Bumble Bee Playgroup & Education Centre

G/F and C/L Nos. 9-11 Wan King Path, Sai Kung
Tel: 2838 8933
Email: support@bumblebee.hk
Website: www.bumblebee.hk

Camp Asia

25 Man Fuk Road, Ho Man Tin
Tel: 3467 4567
Email: info@campasia.hk

Capstone Prep Education Center

Primary Section
5-6/F, 111 Leighton Road, Causeway Bay, Hong Kong
Tel: 2893 6067
Secondary Section
2/F, One Hysan Avenue, Causeway Bay, Hong Kong
Tel: 2893 6060
Email: info@capstoneprep.com
Website: www.capstoneprep.com
Year founded: 2003

Centre of Learning and Life Enhancement Hong Kong Y.W.C.A.

3/F No 1 MacDonnell Road, Central
Tel: 3476 1345
Website: http://clle.ywca.org.hk/
Facebook: https://www.facebook.com/YWCA.
CLLE

Cherry Tree English Education Centre

Shop No. 105A, 1/F, Monterey Place,
23 Tong Chun Street, Tseung Kwan O
Tel: 3468 2648
Email: info@cherry-tree.com.hk
Website: www.cherry-tree.com.hk

De la mano Spanish

Tel: 9317 7006
Email: info@delamanospanish.com
Website: www.delamanospanish.com

Dr. I-Kids Education Centre

Hang Hau Headschool
Shop G15, La Cite Noble Shopping Arcade,
1 Ngan O Road, Tseung Kwan O
Tel: 2177 2141
Ting Keng Leng
Shop A3, Ocean Shores Phase III,
88 O King Road, Tseung Kwan O
Tel: 2177 4788
WhatsApp: 9811 7674
Website: www.drikids.com/us/school

Eye Level Excelsior (Popwalk)

Shop 102, Popwalk 3,
No. 19 Chi Shin Street, Tseung Kwan O
Tel: 2783-7336
Email: eyelevel.excelsior@gmail.com
Website: www.myeyelevel.com/HongKong/index.do

Eye Level Hong Kong

Unit 601, Island Place Tower,
510 Kind's Road, North Point
Tel: 2104 0188
Email: hongkong@myeyelevel.com
Website: www.myeyelevel.com

First Code Academy

5/F, Gee Tuck Building,
16-20 Bonham Strand, Sheung Wan
(Opening June 25, 2018)
Tel: 2772 2108
Email: hello@firstcodeacademy.com
Website: www.firstcodeacademy.com
Year Founded: 2013
Year groups: Tinker: Age 6-8; Explorer: Age 9-11;
Creator: Age 12-14; App Entrepreneur: 15+

Foundation Global Education

13/F, Chinachem Hollywood Centre,
1 Hollywood Road, Central, Hong Kong
Tel: 3107 8810
Email: info@foundationge.com
Website: www.foundationge.com

Genius Development Workshop and Sciencetech Future

Shop 401, 404, 406 & 412, Level 4, The Arcade,
100 Cyberport Road, Hong Kong
Tel: 2338 9877
WhatsApp: 6351 8779
Repulse Bay Campus 1
Shop Nos. 206 and 207B, Level 2,
No. 28 Beach Road, Repulse Bay, Hong Kong
Tel: 22338 3770
WhatsApp: 9703 0731

Repulse Bay Campus 2

Shop G205, The Arcade
No. 109 Repulse Bay Road,
Hong Kong
Tel: 2338 3770
WhatsApp: 9703 0371

Kowloon Tong Campus

No. 10 Somerset Road,
Kowloon Tong, Hong Kong
Tel: 2180 9249
WhatsApp: 539 54669

Redhill Campus

Shop G22, G/F, Redhill Plaza, No.3 Redhill Road,
Tai Tam, Hong Kong
Tel: 3169 0136
WhatsApp: 6972 8275

The Peak Campus

Shop 2, G/F, 2-4 Watford Road, The Peak, Hong Kong
Tel: 2180 9249
WhatsApp: 6979 8858

Braemar Hill Campus

Shop no.15, Ground Floor, Braemar Hill Shopping
Center,
No.45 Braemar Hill Road, Hong Kong
Tel: 2338 3126
WhatsApp: 9703 9653

Hung Hom Campus

Unit 3H, Kaiser Estate Phase 2, 47-53 Man Yue Street,
Hung Hom, Kowloon, Hong Kong.
Tel: 2180 9248
WhatsApp: 5395 4669
Email: info@streams.hk

Websites:

https://www.geniusdevelop.com/
https://www.sciencetechfuture.com/



Go Fun Class

Shop B1, G/F, Marina Cove Shopping Centre, Sai Kung, New Territories
Tel: 2335 1263
WhatsApp: 6210 0228
Email: cs@gofunclass.com
Website: www.gofunclass.com

Goethe-Institut Hong Kong

14/F HK Arts Centre, 2 Harbour Road, Wanchai, Hong Kong
Tel: 2802 0088
Email: info@hongkong.goethe.org
Website: goethe.de

Good At Education Centre

Shop S19, 1/F, Commercial Centre, Bauhinia Garden, 11 Tong Chun Street, Tseung Kwan O
Tel: 2805 8181

Groots Education Centre

Shop No. 33, 1/F Corinthia By The Sea, 23 Tong Yin Street, Tseung Kwan O
Tel: 2566 9928
Email: contact@grooteducation.com

Hong Kong Golf & Tennis Academy

81 Tai Chung Hau, Sai Kung
Tel: 3187 8900
Email: enquiry@hkgta.com
Website: www.hkgta.com/

K-Academy Learning Centre

Aberdeen Centre
 Shop 3A, 1/F, Site 1, Aberdeen Centre, Aberdeen
Tel: 2355 7557
Tseung Kwan O
 Shop 108A, 1/F Savannah Place, 3 Chin Shin Street, Tseung Kwan O
Tel: 2116 0146

Koding Kingdom

Whampoa Centre
 Room 11, 6/F, Harbourfront Landmark, 11 Wan Hoi St., Hung Hom
Kennedy Town Centre
 4/F, Cheung Hing Industrial Building, 12P Smithfield, Kennedy Town
Taikoo Centre
 13/F Zung Fu Industrial Building, No.1067 King's Road, Hong Kong
Tel: 9224 6986
WhatsApp: 924 6986
Website: www.kodingkingdom.com
Email: info@kodingkingdom.com

Le Club des cinq French Learning Centre

2F King Dao Building, 14 Burrows Street, Wanchai
Tel: 2575 4555 / 9773 7941
Email: contact@clubdes5.hk

Lee Educational Consulting

Unit 705, 7th Floor, Star House, No. 3 Salisbury Road, Tsim Sha Tsui
Mobile: 9416 0798
Wechat: ljasonkh
Website: www.leeeducation.com

Little Beijing Chinese Education Centre

Basement No.15A Papillons Square, 21 Tong Chun Street, Tsung Kwan O
Tel: 2666 0180
Email: info@littlebeijing.edu.hk
Website: www.littlebeijing.edu.hk/

Mathconcept Learning Center

Park Central Shopping Arcade, Tseung Kwan O
Tel: 2796 3399
WhatsApp: 2788 1188
Website: www.mathconcept.com

Math Stone Education Centre

Shop E1, LG2, Phase 3, Ocean Shores, 88 O King Road, Tseung Kwan O
Tel: 2362 3870
WhatsApp: 9167 6867

Mini Mandarins Learning Centre

Causeway Bay Centre
 7/F, Capital Commercial Building, 26 Leighton Road, Causeway Bay
Tel: 2320 1128
Email: info@minimandarins.com
Central Centre
 Room 1703 17/F Universal Trade Centre, No. 3-5A Arbutnot Road, Hong Kong
Tel: 2320 5208
Email: central@minimandarins.com
Website: www.minimandarins.com
Year founded: 2014

Momoking Education

Shop105, Monterey Place, 23 Tong Chun Street, Tseung Kwan O
Tel: 2116 1253
WhatsApp: 9406 1638
Website: www.momokingedu.com

Monkey Tree English Learning Center (Head Office)

Room 2801, 28/F Citicorp Centre, 18 Whitfield Road, Hong Kong
Tel: 3563 6771
Email: enquiry@monkeytree.com.hk
Website: www.monkeytree.com.hk

NTK Academic Group

Main Campus
 3-5/F & 7/F (Front office), Lee Garden Five, 18 Hysan Avenue, Causeway Bay
Tel: 2577 7844
Email: enquiry@ntk.edu.hk
Kowloon Campus
 2/F, the Avery, 16 Hau Wong Road, Kowloon City
 Tel: 2718 3000
Email: enquiry@ntk.edu.hk
Website: www.ntk.edu.hk
Year founded: 1996
Curriculum: SAT, AP, TOEFL, IB, IELTS

Perfect Potential Education Centre

Shop B4 & B10, Marina Cove Shopping Centre, 380 Hiram's Highway, Sai Kung
Tel: 2719 1700
Email: info@potential.edu.hk
Website: www.potential.edu.hk

Spanish World Leading Language Group

701, 7/F Lap Fei Building, 6-8 Pottinger Street, Central, Hong Kong
Tel: 2526 9927
Email: hk@spanishworldgroup.com
Website: www.spanishworld.hk

SO-IN Education Centre (Po Lam)

G47,G80,G82 & G94 Tower 4, Metro City Phase I, 1 Wan Hang Road, Sai Kung
Tel: 2715 1308
Email: info@soinedu.com.hk
Website: https://www.soinedu.com.hk

The Edge Learning Center

Causeway Bay
 2F, Zoroastrian Building, 101 Leighton Road, Causeway Bay
Tel: 2972 2555
Mong Kok
 Unit A, 2/F, Silvercorp International Tower, 707-713 Nathan Road, Mong Kok
Tel: 2783 7100
Email: info@theedge.com.hk
Website: www.theedge.com.hk

The Genius Workshop

Happy Valley Center
 Unit B, 1/F, Southern Pearl Court, 151 Wong Nai Chung Road, Happy Valley, Hong Kong
Tel: 2591 0100
WhatsApp: 6211 1968
Taikoo Center
 Unit 1001, Podium, Hang Sing Mansion, 3 Tai Wing Avenue, Quarry Bay, Hong Kong
Tel: 2591 0009
WhatsApp: 6211 1968
Email: info@g-workshop.com
Website: http://www.g-workshop.com/

YLPSK & GAPSK

Room 1803, 18/F, Hollywood Plaza, No. 610 Nathan Road, MongKok, Kowloon, Hong Kong
Tel: 3101 0800
Email: info@ylpsk.org
Email: info@gapsk.org
Website: www.ylpsk.org
Website: www.gapsk.org

**Admission Office:****Kindergarten Section**

Kowloon Tong Campus: 20 Durham Road
Tsuen Wan Campus: Portion B, Podium E, 4/F, Riviera Gardens,
Tel: 2337-6883 & 2408-2861
Email: kln20funful@yahoo.com.hk
Website: https://www.kindergarten.funful.hk/

Primary Section

1 Cumberland Road, Kowloon Tong, Hong Kong
Tel: 2338-3434
Email: office@fsris.edu.hk
www.fsris.edu.hk

Admissions Overview

PIONEERS OF THE
STORYTELLING IMAGE

venture
studios

CREATING MEMORIES



**CALL NOW!
2885 6262**

LONDON • HONG KONG • NEW YORK



Find us on:
facebook



Venture Studios Hong Kong



Venturephotography.com/hk



[venturestudioshk](https://www.instagram.com/venturestudioshk)



+852 5304 7363