

International Schools Guide





Enrollment for
Preparatory to Grade 6
2023-2024
academic year

Learn and Grow in God's Love

Serve and Flourish in God's Grace

學習成長在神愛 服事綻放沐恩光

**Welcoming
Admissions**



Rejuvenated school campus
new school campus, same Christian ethos



Canadian curriculum
Alberta English-Chinese bilingual program
(65% English and 35% Chinese-Mandarin & traditional script)



Christian ethos
cultivate students' character development and servant leadership



Small learning community
develop an engaging learning journey

International schools are well placed to address the challenges of the 21st century

With the rapid advances in big data and artificial intelligence applications, and the popularization of such handy tools as ChatGPT and others yet to emerge, educators as well as parents are increasingly concerned on whether the education as we know it is still relevant for our children who will face a very different global scenario when they graduate.

The rapidly evolving landscape of the 21st century means changing needs for a new breed of graduates whose required qualities and capabilities cannot, as yet, be clearly defined. In this context, a holistic education delivered in a liberal and inquisitive mode is definitely more effective in nurturing children to become intelligent, all-rounded whole persons who have the drive and the flexibility to realize their full potentials and tackle challenges unfazed.

Parents find that mainstream schools are still under consistent pressure to dish out information en masse to complete a demanding syllabus, with students mired in rote learning, memorization and recall, not to mention the heavy loads of odious homework; there is simply no time for personal and social development. On the other hand, international schools provide the facilities, the environment

and the enlightened support for students to develop their talents and character, and seek the knowledge and answers for themselves. No wonder their students all seem to rejoice going to school every day!

As you go through this Guide, you will keep coming across such watchwords as curiosity, discovery, opportunity, excitement, passion, initiative, open-mindedness, collaboration, and a host of other positive elements and qualities. Students learn in a culturally rich and multilingual environment and become creative thinkers, problem solvers and emphatic leaders.

The results are plain for all to see. The language proficiency, self-confidence, and reasoning power of international school children stand them in good stead for further education whether locally or overseas, and for their long-term development and advancement in society.

Andy Au
Features Editor



Contents

1

Editor's Message
International schools are well placed to address the challenges of the 21st century

8

Top Schools
Planning and managing school applications doesn't have to be a stressful struggle with spreadsheets

10

Clarity Myopia Control Centre
Why is Myopia referred as a Public Health Crisis?

12

Hong Kong Academy
Strong home-school partnerships which foster student success

14

Christian Alliance P.C. Lau Memorial International School
Making the process seamless with Christian Alliance P.C. Lau Memorial International School (CAPCL)

16

The ISF Academy
Cultivating critical thinkers with the passion to learn

18

Invictus School Hong Kong
A 15-year international programme that nurtures innovative lifelong learners

20

Wycombe Abbey School Hong Kong
Wycombe Abbey School Heads discuss what makes a Wycombe Abbey education so special

22

American International School Hong Kong
Serving Hong Kong's local and international families since 1986

The Standard
英文虎報

"International Schools Guide"
is published by
The Standard



Display Advertising Department
3/F., Sing Tao News Corporation Building,
7 Chun Cheong Street, Tseung Kwan O Industrial Estate,
Tseung Kwan O, New Territories, Hong Kong

Advertising Hotline: (852) 3181 3311
Fax: 2758 3579

All rights reserved.

Features Editor: Andy Ng
Designer: Sally Lau
Business Director: Irene Chan

Website: www.thestandard.com.hk
Email: advertise@thestandard.com.hk



Go Splash ! Endless Summer in Water World Ocean Park

Hidden in a natural wonderland is Asia's first, and only year-round all-weather seaside water park, where you will get to escape from the hustle and bustle of urban life. Perfectly nestled in the hidden valley, blending in with the natural terrain, its terraced design and its 27 all-weather indoor and outdoor facilities are spread out across the five themed zones with two mega wave pools, two rivers and an assortment of exciting slides found in hidden caves and secret grottos. The all-weather, year-round water park allows you to enjoy the endless Summer ! Indoor thermostatic systems and outdoor heat lamps at queue areas could lift up the enjoyment of all the fun and thrills to maximum comfort. What's more ! Don't forget to book the cabana and chill out in the exclusive area with panoramic seaview! Go Splash with us !

Inquiry : 852 - 3923 2323

sales@oceanpark.com.hk

<https://waterworld.oceanpark.com.hk>

Contents

24

English Schools Foundation
ESF: A World-Class Education
From K1 To Year 13

26

Nord Anglia International School Hong Kong
Thinking beyond traditional education to
transform learning

28

Dalton School Hong Kong
I am not led, I lead.

30

German Swiss International School
The German Approach -
Benefits of the DIA Diploma

32

French International School
The French International School (FIS) is
celebrating 60 years of redefining academic
excellence and is proud of its multilingual,
diverse body of students

34

HKCA Po Leung Kuk School
Affordable High-quality International
Curriculum (PYP) on Hong Kong Island

36

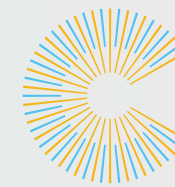
Korean International School
Fostering a global mindset in students

38

Bloom KKCA Academy
HK's First Bilingual School of Innovation

40

Shrewsbury International School Hong Kong
The Best Primary School in Hong Kong



Clarity
Myopia Control Centre
清晰近視防控中心



-6.00 DIOPTERS BRINGS
44X HIGHER RISK OF
RETINAL DETACHMENT

Why Clarity?

- One-on-One check-ups and consultation provided by experienced professionals
- One-stop service
- Customized myopia control solutions

Don't turn a blind eye.
Childhood myopia is preventable and controllable,
only if you take the opportunity.

Children Myopia Control Assessment
for children aged 6 or above includes

13 CHECK-UPS

Diagnosis Report

Myopia Control Assessment

- Multispectral Refraction Topography
- Axial Length Measurement
- Ocular Health Assessment
- Visual Acuity
- Refraction
- Colour Vision
- Stereopsis
- Binocular Vision
- Intraocular Pressure
- Cycloplegic Refraction
- Fundus Imaging
- Corneal Topography (for contact lens fitting)
- OCT (for monitoring treatment effectiveness)



ACT NOW

Defend their brightest vision

Rm 1303-06 & 1310-11, 13/F,
9 Queen's Road Central, HK

Enquiry: 3423 0839 6883 1018



Contents

42

Fairchild Junior Academy / Fairchild Kindergarten
A Child's Perfect Place is Fairchild

44

The Harbour School
Sailing into the Future

46

Discovery Bay International School
DBIS Sixth Form: Scholarships Available

48

Concordia International School
Transforming Lives Together...

50

Mulberry House International Kindergarten
Mulberry House is paving the way for
bilingual education in Hong Kong

52

Small World Christian Kindergarten
Loving for Today, Learning for Tomorrow,
Living for Eternity

54

Oxbridge School
The Best of British education
for a global future

56

MAGART International Kindergarten
Unleashing full potential in the early years at
MAGART

59

Directory



HONG KONG ACADEMY JOYFUL AND RIGOROUS INTERNATIONAL EDUCATION



INCLUSIVE
EDUCATION



THREE PROGRAMME
IB WORLD SCHOOL



EXCEPTIONAL
LOCATION



GLOBAL
ALUMNI NETWORK



LOW
STUDENT:TEACHER
RATIO



COMMITMENT TO
INTERNATIONALISM



AWARD-WINNING
FACILITY



STRONG
HOME-SCHOOL
PARTNERSHIP

Apply Now
Spaces Available



Contact Admissions or
Book a Personalised Tour

33 Wai Man Road, Sai Kung,
New Territories, Hong Kong SAR
+852 2655 1111
admissions@hkacademy.edu.hk
www.hkacademy.edu.hk





Planning and managing school applications doesn't have to be a stressful struggle with spreadsheets

Most parents stress and struggle with spreadsheets to try to analyse school information and make decisions.

Are you one of them?

Getting information is not difficult. All schools publish their fees and curriculum and invite you to the school to learn more and, finally, to apply. If you've not got your hands on our handy Budgeting Guide, get it here (It's free!):



Six Easy Steps to Get into the Best Fit School for your Child

1. Research all schools
2. Eliminate ones you don't like and shortlist those you do like
3. Arrange to visit the schools and visit
4. Apply to 2-3 schools
5. Take your child for the assessment
6. Receive the result

Seems simple, right?!

It's not!! Step 1: Research is fraught with risk.

If you're like most busy working parents, you'll spend a ton of time on the internet looking at schools' websites. That means time not spent with your family. But, more importantly, you are very probably making mistakes. You may need to spend more hours on the phone with schools to clarify the info on their website and you'll get different answers on different days, depending on who you speak to.

And, worse, you may not know the information is faulty and so you are making real, important decisions based on it, which may cost you enormous amounts of money down the road.

And if all six steps go smoothly and the result is 'Accepted', 'Congratulations'! If this is the only school your child is accepted into AND if you are sure you understand and like the school, go ahead and pay your deposit (It's non refundable!)

And here's where so many parents run into a **big problem**.

Wrong information, wrong result, wrong time

Too often, parents get too far along - complete all six steps - based on wrong information only to get the wrong result.

Here are a few comments from real parents in our Facebook group (Hong Kong Schools)/sent to us in Facebook Messenger:

Q: "I applied to XYZ school and honestly I thought he'd get in. He didn't; he was not even waitlisted. And now we've missed the deadlines; what can we do?"

A: You can apply to some schools if you know which ones have spaces AND will accept your son. Or you can try again for next year. It will be very important to understand WHY your son did not get in, so as to address that and get a different result next time.

Problem: This parent did not know that their child's academic level did not match that of their chosen school.

Q: We have offers from ABC, XYZ and 123 school. We've put down deposits at all of them. Which one is better?

A: Honestly, we can't say any one is better than the other; they are all different. Without meeting your child, we can't make recommendations. Unfortunately, you will forfeit two deposits, which could have been avoided with careful planning.

Problem: This parent has spent far too much money on deposits and is still unsure which school best fits their child.

Q: We have an offer from ABC School but the school is quite new and we are not too sure about it. Do you have any advice?

A: You would typically research and visit a school to make sure you are satisfied with the curriculum, the leadership, the staff and students before making an application. Now that you have an offer, you will have around two weeks to accept or decline. If you accept, you'll need to put down a deposit so you should be satisfied it's the right choice.

Problem: This parent failed to plan and raced ahead to generate an offer they are now not sure they want. They will forfeit a deposit at this stage if their child does not attend the school and will not be able to defer.



So, we can see that it is easy to follow the six steps but not necessarily straightforward!! Yes, the information is available (most of it) but ... it's knowing HOW to **apply** it that's difficult.

And you can't start over - you only have one chance to get this right and meet all the deadlines.

To help parents just like you, please head over to our International Schools Database at www.hongkongschools.com.hk

You can easily research the schools that potentially fit your child, the ability to easily compare details and export a custom report. Oh, did I mention we have a grade calculator too! You're welcome!



Learn more about Top Schools here:

<https://topschools.link/Our-socials>



Why is Myopia referred as a Public Health Crisis?

Technology has been developing at amazing speed in recent decades and people's lifestyle is driven to change significantly. Manpower has been substituted by automated machines in many jobs that a lot of people nowadays work at least 8 hours a day in a small cubicle with monitors and computers inside cement buildings. Children are also spending more time than ever on near work, no matter for school or entertainment, but a lot less time outdoor. Sitting in front of desks and staring at screens for hours doesn't just imply a sedentary lifestyle that brings our children weight related health risks, but also brings them myopia problem and its related risk of vision impairment.

Myopia, often called short-sightedness or near-sightedness, occurs when the eyes are elongated. Such growth in the eyes stretches the retina and other tissues. As a result, these tissues become more vulnerable to eye diseases and damages. If a person has myopia of 6 diopters, the risks of suffering from glaucoma, cataract, retinal detachment, or myopic maculopathy are 3X, 6X, 22X and 41X higher respectively than an average person.¹ The numbers rocket to 14X, 12X, 44X and 127X respectively for a person with myopia of 8 diopters or higher. Most alarmingly, these complications can lead to irreversible blindness.

Alarming global prevalence of myopia

World Health Organization has kept an eye on myopia related health problems in recent years. According to its report published in 2016, around 27% (1.89 billion) and 2.8% (170 million) of the world population were estimated to be affected by myopia and high myopia respectively in 2010. The numbers were expected to increase to 52% (4.95 billion) and 10.0% (925 million) respectively in 2050.² Annual global costs of productivity loss associated with vision impairment from uncorrected myopia was estimated to be US\$ 244 billion. With the expected drastic increase in influence of myopia, its associated costs are assumed to escalate too. Myopia is thus referred to as a public health crisis. Some may argue that not everyone with myopia will become vision impaired, but considering its growing prevalence, there is no guarantee on one's luck. We should prevent and control myopia progression proactively for fear that it is too late to do so.

Myopia is an irreversible condition that develops rapidly in children before 18 years old which eye growth in adult is usually stabilized. Thus, age 6 to 14 is considered the critical time to intervene and protect children's eye health. There are plenty of clinics and medical centers in Hong Kong offering myopia control services that are evident based and easy for children to handle.

6 to 14 is the best time for intervention

Currently, there are 4 major methods to control or prevent myopia, namely atropine eyedrops, myopia control spectacle lenses, Orthokeratology (Ortho-K), and myopia control soft contact lenses.

Atropine is often used in eye check-ups, for diagnosis and treatments in some eye conditions. At a very low concentration, it can slow down eyeball elongation pharmacologically with some possible mild side effects such as photophobia and blurred near vision. A recent 2023 study by CUHK has proven that prophylactic use of 0.05% atropine eyedrop can significantly lower the incidence of myopia.³ However, it is a prescription medicine that requires doctors' consultation.

Traditional single vision glasses correct vision by refracting light rays onto central part of the retina so that users can see things clearly. However, peripheral lights will be projected behind the retina, creating so called hyperopic defocus. This hyperopic defocus stimulates eyeball elongation and myopia progression. Myopia control spectacle lenses have a special optical design that peripheral lights are focused in front of the retina to avoid hyperopic defocus, thus correct central vision and control myopia progression at the same time.

Ortho-K is a night-wear hard lens that can reshape the cornea of the eye during sleep, provide clear vision and control myopia after removing the lenses upon wake. While myopia control soft contact lenses are soft contacts with special optical design, which can correct central vision and control myopia progression at the same time.



There are plenty of methods and sometimes combination treatments available in the market to prevent and control myopia in children. However, various methods may work differently in each individual as their situations are unique. Parents are suggested to bring their kids to credible medical centers for comprehensive check-ups and consult the professionals on the most suitable and adaptable way to help controlling their myopia.

Clarity Myopia Control Centre

1303-05, 13/F, 9 Queen's Road Central, Hong Kong
 Tel: 3111 1120 / 3188 9853
 Whatsapp: 6883 1018
 Website: <https://eyesurgery.claritymedic.com/myopia-control/>
 Facebook: @clarity_cmc
 Instagram: @clarity_cmc



Strong home-school partnerships which foster student success

Hong Kong Academy believes that strong home-school partnerships support student success. We spoke to HKA parent Diana Laudani, about why she and her husband chose the school for their children and how the school helps them stay connected to their children's learning.

Could we start with you sharing a little about yourself and your family?

Sure! We are an Italian-German family with two children, both born in Hong Kong. My husband and I have been working in Asia for many years and moved to Sai Kung in 2010. When HKA moved their campus near our home we knew it would be our first choice school.

How long have your kids been at HKA and why did you choose this school for your children?

Our daughter joined for Kindergarten and is now in Grade 8. Our son started two years later and is excited about moving up to secondary school in August. We liked the strong community feel of the school and felt the school's mission and the IB curriculum with its inquiry-based teaching model would nurture our children's passion for learning and support them in becoming knowledgeable and confident adults.

So you have been with the school for a long time, do you still have the same priorities as when your children joined?

Yes. Our main priority has always been to see our children happily thriving in a safe learning environment where they



can develop their academic knowledge and social skills as well as their sporting and creative talents. I can clearly see how my own children and their classmates are developing into mature, caring individuals who are able to advocate for themselves and thoughtfully present their ideas in small as well as larger group settings, and are actively involved in community projects which make a difference.



Modern parenting can be complicated, how has HKA supported you over the years?

As a parent you always want the best for your children and that can be challenging as they are growing up in a very different world to the one we grew up in. HKA supports families at every developmental stage. I have benefitted from attending many parenting book club sessions and educational workshops where school counsellors, curriculum coordinators, school principals and specialists offer their expertise in crucial topics such as safe use of technology and social media, the importance of wellbeing, the benefits of reading aloud with your child, understanding the IB teaching approach for maths and problem-solving strategies, through to finding the perfect university match or career pathway.

Any final words of advice to our readers?

There are many international schools in Hong Kong which means you can find the right fit for your family's goals. Visit your shortlisted schools and ask them how they deliver against your most important criterion. Remember that learning has changed since we were at school and that universities and employers don't just look at academics but

also at aspects such as social intellect and leadership skills. And, be open-minded and listen to your children so that as they mature they get the education which meets all of your expectations.

HKA graduates attend competitive colleges and universities all over the world. The school is one of only eight fully-authorized three programme IB World Schools in Hong Kong and the only one offering the Global Citizen Diploma programme. If you would like to find out more, you can book a personalised tour or virtual consultation with their admissions team at admissions@hkacademy.edu.hk

Hong Kong Academy

Personalised tours and consultation available, contact HKA at:

Tel: 2655 1111

Email: admissions@hkacademy.edu.hk

Website: hkacademy.edu.hk

33 Wai Man Road, Sai Kung, New Territories, Hong Kong



Making the process seamless with Christian Alliance P.C. Lau Memorial International School (CAPCL)

At CAPCL, your child can seamlessly transition into a bilingual English and Chinese learning environment with supportive child-centred expertise provided by the school and its dedicated staff.



Bilingual curriculum with a Co-homeroom System

CAPCL is a bilingual international primary school which adopts the Canadian Alberta curriculum with a Co-homeroom system—two teachers are responsible for the care and education of students in each homeroom. Our program is suitable for children from preparatory (aged 5) to grade 6 (aged 11). Employing a unique combination of 65 % English and 35 % Mandarin Chinese teaching, CAPCL nurtures future leaders by unlocking every learner's academic potential.

Play-oriented Learning

CAPCL adopts a play-oriented mode of teaching into its

bilingual curriculum to foster a better understanding of both the English and Mandarin Chinese languages, intergroup and interpersonal social skills, and a positive and enjoyable mindset to learning.

Verbal and Non-Verbal Teaching

CAPCL's bilingual curriculum emphasizes verbal and non-verbal communication with its students. With this engaged approach, your child's language skills will flourish alongside their observational and social skills as they learn, play, and communicate through a variety of verbal and non-verbal languages with their classmates and teachers.



Three "R"s Motto

CAPCL's teachers follow a strict three "R"s motto when it comes to aiding students to transition into a dynamic bilingual environment, eliminating unnecessary difficulties.

1. "Relational" teaching

Your child will be engaged in a network of support starting from day one, within a small classroom learning community of just 22 to 24 students per two teachers.

2. "Relevant" lessons

The curriculum is designed to encourage development from the perspective of children's interests. In this environment, your child can communicate their thoughts and contribute to class discussions in ways that are meaningful and impactful to their personal growth.

3. "Rigorous" curriculum

Whilst CAPCL reinforces a play-oriented approach in the classroom, teachers also ensure that lessons are engaging and challenging for every single student under their watch.

Parent's Involvement

Parents' support in their child's transition into a bilingual learning environment will greatly improve their performances in class socially and academically—that is why CAPCL also puts emphasis on home-parent collaboration! Ongoing communication between parents, teachers, and students ultimately fosters the desire to participate in various activities in and out of school and, most importantly, the desire to learn.

Christian-Based Education

A Christian establishment, CAPCL believes that every learner is special, unique, and valuable, and encourages each child to develop his or her God-given talent. At CAPCL, children's dispositions are revealed to us in their play, learning, and daily experiences.

Christian Alliance P.C. Lau Memorial International School

2 Fu Ning Street, Kowloon, Hong Kong

Tel: 2713 3733

Email: info@capcl.edu.hk

Website: www.capcl.edu.hk



Cultivating critical thinkers with the passion to learn

The Independent Schools Foundation Academy (The ISF Academy) is a not-for-profit private independent primary and secondary school providing a unique inquiry-based Chinese and English bilingual immersion education. We are a Chinese school with a global perspective.

We believe that learning is the active construction of knowledge best experienced through meaningful activities that foster exploration and creativity. An ISF education emphasizes probing discussions, passionate debates and critical thinking. ISF students are cheerful high achievers who exude a joy of learning that drives their development as culturally agile and confident communicators who possess the social, creative and analytical thinking skills necessary to succeed and thrive in a complex world.

We are a strong proponent of learning by doing. Our

hallmark Experiential Learning Program features unfamiliar settings and novel challenges that build character and confidence. An ISF learner is at home building dormitories in Laos, researching ancient texts in Cambridge or exploring the rich history of the Silk Road.

We are an accredited International Baccalaureate (IB) World School. The last three years has seen 156 students taking the IB Diploma exams and achieving an average score of 39 out of a possible 45, enabling our graduates to receive offers from leading universities all around the world.



► **Personalized University Counseling**

Our systematic and personalized university guidance and careers program spans from Grade 9 to 12 and allows our students to make informed decisions about their DP subject choices and subsequent university applications.

► **Bilingual Diploma and Bilingual Theory of Knowledge**

From our very first graduating class, we have had a 100% IB Diploma success rate with at least two thirds of our students each year being awarded the coveted Bilingual IB Diploma. Students also receive Theory of Knowledge instruction in both English and Chinese and may choose either language for their written paper.

► **Exclusive Leadership and Experiential Learning Programs**

Our Virtue and House structures in primary and secondary respectively, together with our Experiential Learning Programs, nurture our students' development as excellent communicators and leaders that empower them to serve as responsible global stewards of tomorrow.



University Offers in the Last Three Years include (by alphabetical order):

- Canada:** McGill University, The University of British Columbia, University of Toronto
- Hong Kong:** Hong Kong University of Science and Technology, The Chinese University of Hong Kong, The University of Hong Kong
- U.K.:** Durham University, Imperial College London, London School of Economics and Political Science, Royal Academy of Music, University of Cambridge, University of Oxford, University of St Andrews
- U.S.A.:** Brown University, Columbia University, Cornell University, Dartmouth College, Harvard College, Johns Hopkins University, Parsons New School of Design, Pomona College, Princeton University, Stanford University, University of California (Berkeley), University of California (Los Angeles), University of Pennsylvania

Rolling Applications for Grade 2 to 11 are now open for the 2023-24 Academic Year. Please visit the Admissions News on our website for more information.



The Admissions Office

- ☎ 2202 2028
- ✉ admissions@isf.edu.hk
- 🏠 1 Kong Sin Wan Road, Pokfulam, Hong Kong
- 🌐 academy.isf.edu.hk



Scholarships and Financial Aid Available

A 15-year international programme that nurtures innovative lifelong learners

Our School

Invictus School Hong Kong was established in 2019 and takes pride in its high quality and accessible education. Invictus aims to nurture individuals in innovative and inspiring ways to become lifelong learners who contribute to a better tomorrow. The modern Tseung Kwan O campus houses the kindergarten and primary years (Nursery to Y6 and ages 3 to 11) and offers a bilingual programme through English and Mandarin Chinese. The secondary school campus in Chai Wan caters for students from Years 7 to 13 (ages 11 – 18), and offers the world-renowned Cambridge curriculum, including IGCSEs and A-Levels.

Our Mission

“Our mission at Invictus is to nurture our students to be future-ready and enable them to skillfully navigate the Volatile, Uncertain, Complex and Ambiguous (VUCA) world that we live in today,” says Julia Woo, Head of School. “To this end, strong instructional and curriculum leadership and sound assessment is key to empower students to not only thrive in the classroom, but also skillfully navigate an uncertain and changing world today.”

Beyond equipping students with the skills, knowledge and competence to enable them to succeed, Invictus students will also be anchored in values such as discipline, integrity, resilience and kindness, so that they will grow to be fine young men and women of good character.



Outdoor learning at primary school (TKO campus)



Mr. Christopher Jackson, Primary School Principal

Our Curriculum

Learning at Invictus is structured around a rigorous curriculum which spirals up through the kindergarten, primary and secondary years. The kindergarten follows the International Early Years Curriculum (IEYC), incorporating the Singapore Mathematics programme and bilingual learning approaches in English and Mandarin Chinese. In the primary section these foundations are built upon, with Cambridge's primary curriculum providing an international framework alongside a continuation of Singapore Mathematics and bilingual learning, but where the emphasis on English grows during the primary years. The secondary programme begins with a core foundation of subjects in Years 7 to 9, before the Cambridge IGCSE programme in Years 10 and 11 offers students some flexibility to align subject choices and personal strengths. The final step of the Invictus journey is the AS and A-Level programmes in Years 12 and 13. These Cambridge qualifications are world-renowned, offering entry to tertiary institutions around the world.



Secondary school, Chai Wan campus



Outdoor learning at Sai Kung for secondary school



Secondary school's science class

Our value-proposition

Invictus School Hong Kong is a through-train school, where a child who joins Invictus at the kindergarten or primary levels, is also guaranteed a place in the primary and secondary sections. The initial application for any year level is made online without charge. The school promotes affordable international school fees, welcoming local and international families, and administrative and teaching staff are familiar with successfully transitioning students into Invictus from a variety of other school systems.

Connect With Us

Parents and students who are keen to learn more about Invictus are welcome to visit the school and meet with members of the admissions and teaching teams. We offer visits, tours and also a one-day taster class for students who want to have a glimpse of a secondary school experience before joining the school. Please reach out to the admissions team via the following details to save a spot,



1 Day Taster Class



School Tour



Apply Now



Ms. Fiona Chan, Kindergarten Principal with the students

Invictus School Hong Kong

Tseung Kwan O Campus (Kindergarten & Primary)
Monterey Place, 23 Tong Chun Street, Tseung Kwan O
Tel: 3643 1868
Email: admissions@invictus.edu.hk

Chai Wan Campus (Secondary)
188 Tai Tam Road, Chai Wan
Tel: 3852 7201
Email: admissions.chaiwan@invictus.edu.hk

Wycombe Abbey School Heads discuss what makes a Wycombe Abbey education so special

Wycombe Abbey School Hong Kong (WASHK) recently welcomed Mrs Jo Duncan, Headmistress of Wycombe Abbey UK, to its Hong Kong campus to talk about the synergy between the two schools and to discuss what makes a Wycombe Abbey education special.

“It’s very exciting to have a family of international schools and there’s a great deal that we can do together as we look to the future, both in terms of pupil and staff interactions and the sharing of best practice,” said Mrs Duncan, who was appointed to the role of Headmistress at the UK school in 2019.

This was Mrs Duncan’s first visit to the Hong Kong campus since she took up her role and she was impressed by the eye-catching architecture of the purpose-built Hong Kong school, with its grand atrium and massive glass ceilings that allow natural light to filter into its corridors. She noted what a privilege it was to study in such a lovely space.

But beyond the four walls, Mrs Duncan was most excited to connect with our staff and pupils and to talk about what is at the heart of a Wycombe Abbey education and how the ‘DNA’ from the UK school is transferred to the school in Hong Kong.



“It’s looking at how to take the ‘DNA’, and the heart of what makes Wycombe Abbey the school that it is and how we can best share that with our sister schools,” she said.

While the Hong Kong school is relatively new, it has strong connections to the UK school, and Mrs Duncan said that these connections are premised on the personal relationships that have built up since the school’s inception.

Since WASHK only caters for pupils from the ages of 5 to 13 years, many female pupils look to Wycombe Abbey UK as their next step. Although they are pupils at



a Wycombe Abbey school, entrance is not automatic to the UK school. Mrs Duncan emphasised that pupils still need to undergo the same interview processes and assessments to get accepted and this is to ensure that pupils are a right fit for Wycombe Abbey and will thrive there.

“I think fit is critical,” Mrs Duncan said. “Very often parents view the School as protecting itself, whereas actually the reverse is true, we’re making sure that it’s a good fit for your child so that your child succeeds and flourishes.”

Even though the Hong Kong school is only in its fourth academic year, three pupils from Wycombe Abbey School Hong Kong have already applied and joined the UK school, settling well into their school environment, Mrs Duncan assured.

Their successful applications were premised on the fact that the UK school and the Hong Kong school are part of the same Wycombe Abbey family; they share the same values and educational ethos.

“Aside from having strong academic standards, we’re really looking for academic qualities,” Mrs Duncan explained. “Virtues such as determination, resilience, resourcefulness, and the ability to reflect are viewed as markers for success at the UK school. And like the Hong Kong school, it is also looking for students who want to be part of a community and who want to get involved in a whole range of extracurricular activities.”

So overall, what makes the Wycombe Abbey schools so successful? According to Mrs Duncan, it’s thanks to the dedicated, capable staff who establish strong relationships with pupils, and that becomes the basis for their learning and supports academic excellence and ensure they flourish and grow into the young women of tomorrow.



Wycombe Abbey School Hong Kong

17 Tin Wan Street, Aberdeen, Hong Kong

Tel: 2129 7128

Email: admissions@was.edu.hk

Website: www.was.edu.hk



Book Your Private School Tour Now:



AMERICAN
★INTERNATIONAL SCHOOL★

Serving Hong Kong's local and international families since 1986

Centrally located in Kowloon Tong, the American International School has been providing a rigorous academic program to local and international students since 1986. Each year, AIS graduates are accepted to prestigious universities in the United States, Hong Kong, and around the world. AIS boasts a family-centered, close-knit school community where students, parents, and teachers share a collective sense of belonging and purpose. The school is organized into three divisions - Elementary, Middle, and High - and serves a student population of approximately 750 students from Early Childhood to Grade 12. The school is fully accredited by the Western Association of Schools and Colleges (WASC) in the United States and has been for over 30 years.



AIS' founding Core Values of **Justice, Knowledge, and Love** remain the hallmark of an AIS education.

Our Expected School-wide Learning Results or ESLRs articulate what all students should know, understand, and be able to do as **Empowered Thinkers, Effective Communicators, Well-rounded Individuals, and Global Citizens**. Our **Social, Personal, and Applied** Learning Model is supported by our Essential Practices, key learning strategies used in every class, from Early Childhood to Grade 12. Above all, AIS builds student **Confidence**, the key outcome of our **Future Framework**.

Our challenging academic program is enriched by broad and highly diverse extra-curricular offerings, vibrant visual and performing arts opportunities, an extensive intramural and varsity sports program, unique experiential learning opportunities, challenging leadership programs, dedicated community service, and a schoolwide commitment to supporting student success. Families can also join in the fun at regular events throughout the year, including Winter Fair, Band Slam, talent shows, TEDxAmericanInternationalSchoolHK, drama performances, art shows, and so much more.

By harnessing the power of Apple technology, we empower our students with the **Creative Confidence** they need to move beyond **consuming** information, to **creating** new content and ideas to share with the world. Our commitment to inspiring innovation and creativity is strong, and an education at AIS ensures that our graduates have unique opportunities and specialized skills that few other students can claim.



From Early Childhood to Grade 12, AIS delivers an affordable and comprehensive program that develops students academically, socially, and personally. Our graduates are ready to face the world with confidence and optimism and prepared to make a positive difference in the lives of others.

Come and see the difference that an education at AIS makes.

AMERICAN INTERNATIONAL SCHOOL

125 Waterloo Road, Kowloon Tong, Hong Kong

T (852) 2336-3812 E admissions@ais.edu.hk

W www.ais.edu.hk  AISHongKong



ESF: A World-Class Education From K1 To Year 13

The English Schools Foundation (ESF) is the largest international schools organisation based in Hong Kong. Our 22 schools – located across the City – combine to form an all-through education system for children aged three to 18. Put simply, this means that if your child joins us in Kindergarten, they will experience a world-class ESF education until they finish their schooling in Year 13.

We may be big – we have 18,500 students and 4,000 staff – but our approach to education is built on a simple fact: each child is unique. We work with every single one of our students to understand them, to help them develop their skills and to bring out their passions. Walk into any one of our schools and you will see students who are happy, engaged and, above all, who are learning each and every day.

It is the approach, this understanding that no two children are the same, that is the foundation for the outstanding academic results that we achieve. There is no other way to say it – what we do is the envy of the world. This year alone, almost 7% of the students anywhere in the world who scored top marks in the IB Diploma did so at an ESF school. Our average scores don't just beat the global marks – we absolutely smash them.

It is no surprise, then, that ESF students can be found at all the top universities in the world.



And, because we understand our students, we know that there is more to them than their academic results. We want them to develop all their passions – be they sporting, artistic or in the fields of leadership and community engagement. When a student and their family join us, we make them a promise – that all of us will work tirelessly to help them be the very best that they can be.

It is a promise that every teacher works to deliver for every one of their students every single day.

Find out more about how your child could benefit from an ESF education at www.esf.edu.hk

English Schools Foundation

25/F, 1063 King's Road, Quarry Bay, Hong Kong

Tel: 3762 2411

Email: info@esfcentre.edu.hk

Website: www.esf.edu.hk



ENGLISH SCHOOLS
FOUNDATION
英基學校協會

ESF.EDU.HK



YOUR CHILD'S
JOURNEY WITH ESF



FIND OUT MORE

Thinking beyond traditional education to transform learning

You want the best for your child. So do we. Nord Anglia International School Hong Kong (NAIS HK) educates your child for the future, enhancing learning through collaborations with the world's best organisations. We teach the most respected and robust educational programmes through collaborations with MIT and Juilliard, delivered in some of the best facilities in all of Hong Kong. Our individual approach to each child enables them to achieve outstanding academic results whilst developing the skills and mind-set to thrive in an ever-changing world.

NAIS HK offers an all-through education for students aged 3-18, with specialist teachers in Music, Art, PE and Mandarin from the very start of a child's educational journey with us. Our sole focus is on the success of each and every child. We want them to be the best they can be and we encourage them to "Be Ambitious", reflecting our school's philosophy. This means we support each student to progress further than they thought possible, achieving more academically, personally and socially – all of which are equally important.

At the heart of the school's success and excellent reputation, is the very high quality of teaching and learning delivered by our exceptional staff. Our teachers create an atmosphere of curiosity, passion and enjoyment for learning in all students. We are proud to attract the best specialist teachers who are committed to nurturing and inspiring every child they care for. We support them to do this through world-class professional development, amplified by the sharing of international best practice. Nord Anglia Education (NAE) offers our staff the opportunity to study for a fully-funded Master's degree from King's College London, underscoring our commitment to the career progression of each teacher. Teachers here teach children, not classes, so the focus is always on the child as an individual. We bring a new approach to the interdisciplinary subjects of STEAM (science, technology, engineering, arts, and mathematics), putting your child at the forefront of developing skills for the 21st century.

With over 40 nationalities represented in our own school, everyone learns to respect others regardless of differences in opinion, religion, race or ethnicity. All major festivals are celebrated and our annual International Day event is a culmination of the recognition that rich diversity is a strength. At NAIS Hong Kong, every day is an 'international day' as our pupils are part of the greater Nord Anglia Education family, with more than 82 schools in 32 countries, linked by our Global Campus. This allows students to co-operate with each other on projects and learning across the world, making them internationally-minded, effective global citizens of the future.

At NAIS Hong Kong, we offer the IGCSEs and IB Diploma Programme. This curricula provides the greatest success for the largest number of students. With our individualised approach to each child's learning, outstanding teachers and collaborations, and unique opportunities inside and outside the classroom, we promise to nurture your child to love learning and help them to achieve more than they ever thought possible.

We would love to welcome your family to become a valued member of our vibrant and growing global community. Join Nord Anglia International School Hong Kong today and give your child the very best education.

Apply now!

Nord Anglia International School Hong Kong

Early Years Campus

285 Hong Kin Road, Tui Min Hoi, Sai Kung, New Territories

Primary Campus

11 On Tin Street, Lam Tin, Kowloon

Secondary Campus

19 Yuet Wah Street, Kwun Tong, Kowloon

Tel: 3958 1428

Email: admissions@nais.hk

Website: www.nais.hk



NORD ANGLIA
INTERNATIONAL SCHOOL
HONG KONG

CREATE YOUR FUTURE

At NAIS Hong Kong, we'll help your child develop the knowledge, creativity and resilience they'll need to succeed - whatever they choose to be or do in life.

Find out how your child can make their mark on the world and how we'll make every moment of their education count.

NAIS.hk



I am not led, I lead.

According to a recent Institute for the Future report, 85% of the jobs that will exist in 2030 haven't been invented yet. With the rise of artificial intelligence tools, like ChatGPT, the future of work is widely uncertain and will include a new competitor: machines. As the landscape of work radically changes, so too must the landscape of learning.

Dalton School Hong Kong was created in order to transform education for the 21st century. By building upon the best of east and west, traditional and progressive, DSHK prepares students to be creative thinkers, problem solvers, and empathetic leaders for a rapidly changing world. That is why our motto is, "I am not led, I lead."

Children are our Curriculum, and the World is our Textbook

When children are excited about what they are learning there is no limit to what they can do. Therefore, the better we know our students and build upon their strengths and interests, the more empowered they are to learn. At DSHK, students determine the topics of study, not textbooks. These studies come to life through rich units of inquiry, projects, and field trips.

Bilingual and Biliterate

Dalton uses a dual language immersion model. This means that 50% of instruction is facilitated in English and 50% is facilitated in Mandarin across ALL subject areas. When students are fully immersed in both languages, rather than taught in isolation, they become fully bilingual and biliterate.



Character Education: Chinese Culture and Habits of Mind

DSHK promotes character education through our inclusive community that values the diversity of our students and shared global community. Dalton's traditional Chinese Values and Habits of Mind framework helps students develop socio-cultural competence and a sense of agency in order to promote a just, equitable and sustainable future for everyone and our planet.

S.T.E.A.M. and 21st Century Thinking

Dalton uses an integrative approach to teaching Science, Technology, Engineering, Art, and Mathematics by focusing on thinking habits, processes, big ideas, and enduring understandings. This approach puts the emphasis on 21st century skills such as critical thinking, collaboration, communication, and creativity, rather than on rote memorization, recall, and procedural fluency.

We invite you to visit us for a school tour or join our Little Basel arts festival on May 20, 2023.



I am not led, I lead.

卓爾樂群

Dalton offers a child-centered, dual language (English and Putonghua) education integrating the heritage of Chinese culture and values with the progressive Dalton Plan.

道爾頓提供以兒童為中心的雙語教育，融合中國文化和價值觀的傳承與漸進式的道爾頓計劃。



SCHOOL TOUR

Dalton School Hong Kong

G/F, Imperial Cullinan, 10 Hoi Fai Road, Kowloon

Tel: 3612 4660

Email: info@dshk.edu.hk

Website: www.dshk.edu.hk



DSHK
香港道爾頓學校
HONG KONG

mini
Dalton

The German Approach - Benefits of the DIA Diploma

Benefitting from a network of over 140 German Schools Abroad, German Swiss International School (GSIS) is a leading dual-language institution in Hong Kong that has offered through-train education from Kindergarten to Secondary since 1969. Delivering a unique multicultural experience, GSIS is steadfast in pursuing its educational goals and continually evolving to meet the changing needs of 21st century learners. With two successful streams, both curriculums present globally recognised diplomas - the German International Stream (GIS) with the German International Abitur diploma (DIA) and the English International Stream (EIS) with the International Baccalaureate (IB) / IGCSE.

German International Stream (GIS) & DIA Diploma

Open to all nationalities, the core of the GIS is delivering a culturally rich bilingual education through a well-rounded curriculum of languages, sciences, mathematics, and arts. By being proficient in one of Europe's most commonly spoken languages, students become bicultural and are able to connect with other cultures. Graduates receive the German International Abitur diploma (DIA) which is accepted at prestigious universities all over the world and is seen as an advantage over other common school qualifications. Those who choose to continue their academic career in Germany, an economic powerhouse, are given an education resident visa and tuition is offered gratuitously by the German government.

GIS KINDERGARTEN

A choice of English, German and English or German and Mandarin is offered. All concepts are taught playfully through rhymes, songs, movement and colourful games. Learning in the German Kindergarten classes is all about discovery, opportunities, excitement, and the joy of learning. The German approach promotes a holistic, child-centred journey where each child is unique and understands at their own pace with an emphasis on learning through play.

GIS PRIMARY

For children who are 6-8 years old, the Cultural and Language Integration Programme in Primary Years, also known as "CLIPPY", presents an immersive German language curriculum. The programme enables children, with no prior knowledge of German, to be supported by personalised language lessons. CLIPPY students are fully integrated in a multicultural environment and part of a nurturing community. It delivers an outstanding education that transforms lives, as well as minds, and develops critical thinking.

GIS SECONDARY

For older children ages 11-12 years old, the "Fast Track" programme is an accelerated German-learning experience designed for Secondary international students where German language courses are integrated into the interdisciplinary curriculum, alongside German speaking students. They are cultivated into a language-rich learning environment and become inquisitive, open minded, and independent thinkers.

Benefits:

- Bilingual education in German & English
- No prior knowledge of German is required for specific age groups
- German International Abitur diploma (DIA) accepted at top universities worldwide including Europe, U.K., U.S.A. and Canada
- Education resident visa and tuition offered gratuitously at German universities
- Intimate class size to provide the best learning atmosphere

German Swiss International School

Peak Campus

11 Guildford Road, The Peak

Pok Fu Lam Campus

162 Pok Fu Lam Road, Pok Fu Lam

Tel: +852 2849 6216

Email: admissions@gsis.edu.hk

Website: www.gsis.edu.hk



CHOICE OF CURRICULUM

GERMAN INTERNATIONAL STREAM (GIS)

No prior knowledge of German is required.
German is the primary language of instruction where some subjects are taught in English in senior years.

German International Abitur (DIA)
Ministry of Education of the Federal Republic of Germany
(Democratic Elected Government)

Required Across K11-12

Higher Level •

German, English, Mathematics

Standard Level •

7 elective subjects: History, Geography, Biology, Chemistry, Physics, French, Mandarin, Music, Art, Ethics, Religion, Physical Education

Accepted by prestigious universities worldwide •
German universities provide education visa residency & tuition offered gratuitously by German government

Universities may offer credit for successful exam results & national awards

5 exams (3 written & 2 oral) •
50% must be conducted in German •

ENGLISH INTERNATIONAL STREAM (EIS)

All classes are taught in English, and German is included in the curriculum as a compulsory foreign language study.

International Baccalaureate Diploma Programme (IBDP)
International Baccalaureate Organisation
(Private Entity)

Required Across Year 12-13

Higher Level and Standard Level

- Choice of 6 subjects, 3 Higher Level & 3 Standard Level:
Language & Literature, Language Acquisition, Individuals & Societies (Social Sciences), Sciences, Mathematics, The Arts
- Additional Requirement:
Theory of Knowledge Course, Extended Essay, Creativity, Activity and Service Projects

Accepted by prestigious universities worldwide, including Germany, depending on the choice of focused IB subjects

Universities may offer credit for IB Higher Level classes with a score of 6 or 7

More than 6 exams - 3 papers for Higher Level & 2 for each Standard Level subject
Language exams are written & oral



The French International School (FIS) is celebrating 60 years of redefining academic excellence and is proud of its multilingual, diverse body of students

Established in 1963, FIS is an international education pioneer in Hong Kong with a unique offering of 2 academic streams dispensed on 4 campuses. At the heart of their learning environment is bilingual education and with their unique mosaic of identities, the diversity of students and staff gives excellent preparation for an interconnected and complex world. It suits those parents who are looking not just for the academic success, but for the school's holistic and caring approach to education.

FIS is a through-train school which accepts applications all year round. It offers students an education from the very start of their learning journey in the early years through to graduation, and research shows that there are many benefits associated with this. The school also offers an extensive extra-curricular programme which enriches student life and encourages them to discover new experiences and interests that can shape their future pathways.

In both the French and International Streams, FIS students' intellectual curiosity is nurtured with care by their teachers. Every member of staff plays a vital part in delivering a unique educational experience in a cohesive school environment in which students can thrive and be themselves. The French Stream prepares students for the French Baccalaureate which is renowned for its rigour, depth and breadth of subject areas. The International Stream prepares students for the IB which is an international qualification of highest academic standing and recognised globally.

The FIS University Guidance Team is focused firmly on helping students with their university and careers research, providing resources to support them as they explore future option. Both Streams prepare students to thrive in universities



around the world and the destinations attest to this. They include top-tier institutions such as Oxford, Cambridge, UCL, Imperial College, Harvard, UC Berkeley, Ecole Polytechnique, Sciences Po, University of Toronto and HKU.

For more information, call Admissions 2892 3677.

French International School

Blue Pool Road Campus

165 Blue Pool Road, Happy Valley

Chai Wan Campus

1 Cheung Man Road, Chai Wan, Hong Kong

Jardine's Lookout Campus

34 Price Road, Jardine's Lookout, Hong Kong

Tseung Kwan O Campus

28 Tong Yin Street, Tseung Kwan O, N.T.

Tel: 2577 6217

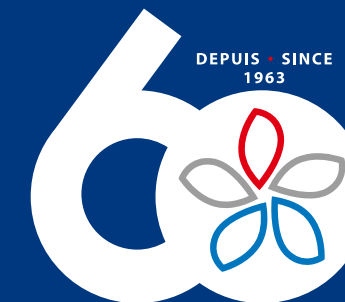
Email: info@fis.edu.hk

Website: www.fis.edu.hk

FRENCH INTERNATIONAL SCHOOL

香港法國國際學校

WWW.FIS.EDU.HK



Lycée Français International
French International School
Hong Kong



APPLICATIONS ACCEPTED YEAR ROUND

4 CAMPUSES 2 STREAMS 1 SCHOOL



Affordable High-quality International Curriculum (PYP) on Hong Kong Island

HKCA Po Leung Kuk School is an affordable, high-quality international-curriculum school conveniently located near the Tin Hau MTR Station (No debenture or capital levy). As an IB World School authorized to utilize the world-renowned Primary Years Programme (PYP; Ages 3 -12), we strive to exemplify the PYP philosophy – a commitment to high-quality, challenging, holistic international education – that we believe is important for our students and will serve them well throughout all aspects of their lives.

At HKCA Po Leung Kuk School, each child's personal learning journey includes support designed to build confidence and encourage lifelong learning. Individual interests, strengths, and abilities are nurtured in an environment where children have voice, choice and ownership in their learning - a hallmark of the PYP programme.

Our Vision

Our students will become creative, critical thinkers who are internationally minded lifelong learners.

Internationally minded people manifest the values and resulting behavior that enable them to respect and embrace differences in cultures, opinions and perspectives, care for others and the environment, and take action to make the world a better place.

We also believe significant amounts of play and adventure foster children's innate desire to learn and imagine, thus allowing them to naturally acquire knowledge, skills and, most importantly, an understanding of the world around them. We offer this both on campus and off, with daily recess time, extra-curricular activities, numerous field trips, and overnight camp opportunities for some grade levels.



We are committed to offering a holistic education for children that not only includes academic rigor, but also develops students' Social Skills, Self-management Skills, Thinking Skills, Communication Skills and Research Skills that can be used throughout life. These are the IB PYP's 5 Approaches to Learning!

Please make an appointment to tour our beautiful campus at 62 Tin Hau Temple Road. In what we refer to as our "cove", we are surrounded by trees with abundant outside play areas for both our Kindergarten and Primary learners. We look forward to seeing you here soon!

HKCA Po Leung Kuk School

62 Tin Hau Temple Road, Hong Kong

Tel: 3465 8400

Email: info@plkis.edu.hk

Website: www.plkis.edu.hk



LIFE AT HKCA PLK SCHOOL



Life at HKCA PLK School is filled with exciting events and learning opportunities.

Apply Now!



EXPERIMENTS

PERFORMANCES

FIELD TRIPS / CAMPS

BOOK A PRIVATE TOUR WITH US!

CONTACT US: +852 3465 8400 www.plkis.edu.hk 62 Tin Hau Temple Road, Tin Hau

Fostering a global mindset in students

Korean International School (KIS) has been successfully running for 29 years in Hong Kong, providing students with an excellent standard of education and a well-rounded learning experience.

Since its establishment in 1994, KIS has been committed to providing a high- education to students from diverse backgrounds. The school has a strong reputation for academic excellence, with students consistently achieving outstanding results in external exams such as the International General Certificate of Secondary Education (IGCSE) and Cambridge International AS & A Levels

KIS prides itself on providing a student-focused education that values individuality, creativity, and critical thinking. The school's dedicated faculty is composed of experienced and highly qualified teachers who are committed to providing a supportive and nurturing learning environment for all students.

One of the unique aspects of KIS is its commitment to bilingual education. The school offers a Korean, Chinese and Spanish language program for students, as well as Chinese language classes for those who wish to study Mandarin or Cantonese. This approach allows students to develop their language skills and cultural understanding, which is essential in today's globalized world.

The school's facilities with modern classrooms, science labs, a library, art studio, a performing arts center, and many sports facilities. The school's campus is located in the Sai Wan Ho area of Hong Kong, providing a peaceful and conducive environment for learning.

We recognizes the importance of extracurricular activities in a student's overall development and offers a wide range of extracurricular activities, including sports, music, drama, and



community service. The school's diverse student body allows for a rich cultural exchange and provides students with a global perspective.

KIS is committed to providing a safe and inclusive learning environment for all students. The school's policies and practices are designed to promote diversity, respect, and understanding, and to ensure that all students feel valued and supported.

Over the past 29 years, KIS has established itself as a leading institution for British curriculum education in Hong Kong. The school's commitment to academic excellence, student-focused education, and a supportive learning environment has earned it a well-deserved reputation as one of the top schools in the region.

Korean International School

55 Lei King Road, Sai Wan Ho, Hong Kong

Tel: 2569 5500

Email: admissions@kis.edu.hk

Website: www.kis.edu.hk



Korean International School

Why choose Korean International School?

- Cozy family atmosphere
- Low student-to-teacher ratio
- Happy children
- Multicultural environment
- Building leaders of tomorrow



Open For Applications

For more information
Please call us

(852) 2569 5500

55 Lei King Road, Sai Wan Ho, Hong Kong.

www.kis.edu.hk

Diversity • Teamwork • Excel

HK's First Bilingual School of Innovation

Bloom KKCA Academy, Hong Kong's First School of Innovation, aims to provide a quality bilingual education in combination with our signature project-based approach. We encourage self-exploration and having an inquisitive mindset, as well as an all-rounded development of personal interests and potential to help students face the different challenges of the future.

Our teachers are there to inspire students and not just to deliver passive knowledge, and it is up to the students themselves to find solutions and learn independently. We especially emphasise this in our interdisciplinary bilingual project-based learning, where we encourage students to "Explore, Create, and Share". Students will come across different real-life problems, ranging from socio-economic to environmental problems; in combination with weekly field trips where they visit locations that help them build on the knowledge they've acquired during the week. Bloom places an emphasis on sustainability, providing opportunities to learn about biodiversity and experience forest school twice a year.

Through small-group learning, we aim to also develop student's communication skills, teamwork and delegation skills, encouraging them to think together as a team, while offering unique perspectives to overcome challenges. As part of their positive education learning, not only do students have time to reflect and understand themselves and their emotions better in our twice-a-day campfire, but also develop the empathy to care for their community. Each term, Bloom



hosts "Care, Think, Act" days and collaborate with different organizations (such as: Changing Young Lives Foundation, EcoDrive etc.) to spread awareness and to educate our students on the leading problems in Hong Kong and create a product of change.

We place an emphasis on STEM. With our advisor who was previously a NASA and Microsoft engineer, our students have weekly coding classes where they learn about game, app, and robotics design. Bloom had 40+ students participating in the Tencent-Wechat AI Innovation Challenge, with three teams reaching the finals, and two teams winning second place and the "Wechat Innovation Award".

As a future-oriented school, we go above and beyond for the things that matter, whether that is finding the best teachers who are both capable and caring or designing an exceptional project-based innovation program, but to also ignite and nurture our students' deepest potential so they blossom into compassionate creators and social innovators.

Bloom KKCA Academy

7 Pui Tak Street, Shek Kip Mei
Tel: 2311 2268
Email: admissions@bloom.edu.hk
Website: www.bloom.edu.hk



EXPLORE CREATE SHARE EXPERIENCE DAY

「探索、創造、分享」體驗日

APR 22
MAY 13
JUN 10

10AM ~ 12PM

For Ages 5-12
適合年齡 5-12

Sustainability Workshop 可持續性工作坊



Join us to experience Bloom KKCA Academy's exclusive project-based learning! Students will participate in a green workshop that will inspire them to think deeply about sustainability, and to put their ideas into practice!

體驗百卉九江書院獨家的專題研習課程! 學生們將參加一個環保工作坊, 激發他們深入思考綠色生活, 並學會如何執行並實踐自己的想法!

Program Advisor:
Ms Mei Chen

Head of STEM and ECS
Former Engineer at NASA,
Microsoft, Accenture, P&G



RSVP Here

FREE

7 Pui Tak St, Pak Tin, Kowloon
九龍白田培德街7號

5981 5959

The Best Primary School in Hong Kong

Shrewsbury International School Hong Kong is celebrating its fifth academic year since foundation. Offering an unrivalled range of experiences and opportunities for learners between the age of 3 and 11, Shrewsbury is the only premium level provider of primary education in the region.

"We are a Primary School and the vast majority of benefits our students enjoy stem from this critical distinction: they are the sole occupants of our beautiful campus and the most significant consideration of school leaders and governors." Mr Ben Keeling, Principal

Learning at Shrewsbury is founded upon a thematic programme that encourages subject interconnection and runs in close alignment with the English National Curriculum. As a result, students develop their ability to think both creatively and critically within a safe, nurturing and inspiring space, designed for and exclusively used by young learners.

Weekly aquatics lessons supplement an ambitious physical education and performing arts programme facilitated by the availability of an incredible range of exceptional spaces, while a three-tiered Chinese language programme ensures that children of all ages and abilities develop confidence and practical fluency.

Home to a broad and diverse community of international families, the majority of students join Shrewsbury at the age of 3 or 5 and enter into a Nursery or Year 1 class, respectively.

A play centred framework defines the experiences of the youngest students. Children in Nursery classes learn through a process of personalised investigation guided by a highly skilled academic team who act to inspire purposeful, considered and conscious engagement - graduated access to a full specialist programme of study and a carefully managed series of interactions with older students provides a bedrock for further interconnection and the steady development of a supporting network.

"Nursery students love school - they engage boldly and with confidence, empowered by their continually developing linguistic skills. The close and trusting relationships we share act to guide personalised exploration and stir deep fascination." Aileen Doyle, Nursery Lead

The widening of capacity also supports seamless early entry to our Primary School. During Year 1, students are encouraged to develop an interconnected network of meaningful relationships, a passion for learning and an informed view of the world around them. The simultaneous



introduction of a House system and the widening of an already expansive Co-Curricular programme broadens social and intellectual contact during a critical phase of childhood development.

"Students in Year 1 are required to interconnect, both formally and incidentally - they rehearse and refine their social skills and in doing so develop the positive learning habits required for critical analysis and creative solution." Ellie Woods, Year 1 Lead

Parents keen to learn more about what makes Shrewsbury sparkle are encouraged to reach out direct via their admissions team.

'You only get one childhood and the experiences on offer at Shrewsbury have a life-defining influence. We provide each of our students with the attributes to thrive both within their primary years and beyond.' Mr Ben Keeling, Principal

Shrewsbury International School Hong Kong

10 Shek Kok Road, Tseung Kwan O

Tel: 2480 1500

Fax: 2480 1231

Email: admissions@shrewsbury.edu.hk

Website: www.shrewsbury.edu.hk



SHREWSBURY
HONG KONG



RESERVE A CAMPUS TOUR TODAY

RSVP



Join us for a Campus Tour, digitally or in-person, to learn more about the unique opportunities and distinct advantages that stand at the heart of a Shrewsbury education. Hosted by our admissions team, parents will engage with students and teachers while navigating the communal and specialist spaces used by all of our students.

A Child's Perfect Place is Fairchild

Play is a child's work, and quality play matters to children. Let's consider how children feel when they come to school. They should feel happy, respected, free to be themselves and enjoy their learning journey. This is what we believe children joining us at Fairchild feel whenever they are in our engaging schools.

Using the environment as the third teacher to motivate and inspire children's learning, we follow the Reggio Emilia inspired approach, which sees children as the protagonists of their own learning. In a fast-paced and changing world of the future, children need personalized learning engagements, building on their own interests and capabilities, through real hands-on experiences. We appreciate the importance of developing a child's growing sense of self, ensuring that everyone is given time and space to explore and to build a sense of achievement at this stage of their lives. This will enable children to build resilience and to take on challenges to use their initiative, leading to better outcomes later in life.

Our Fairchild educators cultivate curiosity, creativity and confidence through our inquiry-based approach, building warm, nurturing and supportive relationships with each child. They support quality play provocations through a wide variety of activities, encompassing the learning goals of The Kindergarten Program from Ontario, Canada. Using the frames of "belonging and contributing", "self-regulation and well-being", "demonstrating literacy and mathematical behaviors" and "problem solving and innovating", our children build a strong foundation in which they can grow and flourish.



From making earth cookies and recycled bottle boats to planting sunflowers and growing tomatoes, children choose how to conduct their learning through the provocations laid out in the classroom environment. The children become genuinely interested in their learning, and this is one way the children learn to be their own "inner teacher."

Our indoor treehouse and shared discovery spaces provide children the opportunity to enhance their gross motor skills, this in turn builds strength and confidence in their bodies, supporting their ability to keep balance and to do more complex physical skills.

With a strong transition to excellent primary schools, our Fairchild children are well-prepared for their future, whether that is in Hong Kong or elsewhere. The "perfect place" which is Fairchild builds children for success in whatever they choose to do. Don't delay, come over to play, and visit our beautifully designed schools!

Fairchild Kindergarten

G/F & 1/F Kong Chian Tower, Block 1,
351 Des Voeux Road West, Sai Ying Pun, Hong Kong
Tel: 2803 2638

Fairchild Junior Academy

22/F, Park Commercial Centre,
180 Tung Lo Wan Road, Tin Hau, Hong Kong
Tel: 2898 1611



OPEN FOR ADMISSIONS

📍 Tin Hau 📍 Sai Ying Pun
English/Bilingual Kindergarten & Playgroup

- PLAYGROUP
- PRE-NURSERY
- K1-K3



CURIOSITY

CREATIVITY

CONFIDENCE

At Fairchild, the process of inquiry-based learning through play, is inspired by the Reggio Emilia approach which recognises and values each child's potential. Fairchild brings 'the outdoors in' in an urban setting, providing great learning opportunities in natural environments that promote a child's innate instinct to play, inquire and learn. Contact us at info@fairchild.edu.hk (Sai Ying Pun) / info@fairchild.academy (Tin Hau) to book a school tour now.



Sailing into the Future

The Harbour School (THS) is a progressive Pre-K to Grade 12 international school with two campuses on Hong Kong Island that aims to unlock the best in every student by taking a highly individual approach to teaching. The school was founded in 2007 and is already gaining a worldwide reputation as a center of excellence. It follows an American curriculum with an emphasis on 21st century skills such as problem solving, teamwork, creativity and innovation. The Harbour School is accredited by the Western Association of Schools and Colleges (WASC), one of the most rigorous and prestigious accreditation globally.

The Grove, the school's campus for primary and middle grade students, opened in August 2017 in Ap Lei Chau. The Grove features state of the art learning facilities including a makerspace, marine science center, performance theater, and a two-storey treehouse. Students also enjoy trips on the Black Dolphin, the school's 50-foot sailboat, which serves as an outdoor classroom moored in the nearby marine. All THS students from Prep to G12 utilize the facilities at the Grove Campus to extend hands-on learning and reinforce real-world concepts.

In keeping with the school's ethos of personalised learning, high school students enjoy an "urban college" feel in Ap Lei Chau at the Garden campus, a short five-minute walk from the Grove facilities. The school offers advanced placement (AP), honors, core and supported coursework for qualifying students in their pursuit of a US High School Diploma.



What did we do at school today?

The Harbour School is a model for providing inclusive education for typical, advanced and gifted children while also providing attention and support to students with areas of weakness. They develop a global cultural literacy in science, history, technology and the arts in an atmosphere of kindness, flexibility, respect and individualism.

Ways that THS makes learning fun and enriching

Progressive schools like THS implement student-centred ideas and practices, engaging its students in every aspect of school life.

- THS believes that all students are different, with different needs, learning styles and interests. THS provides a range of opportunities to suit each student.
- THS provides learning environments that are safe, exploratory, exciting and inspiring
- THS teachers are not only highly accomplished and dedicated to the school's mission, but they work collaboratively so that there is a rich and in-depth understanding of each student's strengths, interests and abilities.

Applications for admission are accepted on a rolling basis, for more information, please visit our website.

The Harbour School

The Grove (Primary Campus)
332 Ap Lei Chau Bridge Road, Ap Lei Chau
The Garden (Secondary Campus)
138 Lee Chi Road, Ap Lei Chau
Tel: 3612 1090
Email: admissions@ths.edu.hk
Website: www.ths.edu.hk

Learning is a voyage in curiosity every day at The Harbour School. Our students are provided with unique opportunities to explore their learning, hands-on. Whether it's studying the life-cycle of moon jellyfish at our Marine Science Center, project managing school development in Kenya or engineering solar-powered ovens at our makerspace, The Foundry, our students can't wait to embark on tomorrow's next adventure.

Curious? We always are.
www.ths.edu.hk



DBIS Sixth Form: Scholarships Available

Register for our Sixth Form Open Event on 16 May: dbis.hk/SixthFormEvent

Discovery Bay International School (DBIS) Sixth Form is an excellent choice for parents who want their children to achieve exceptional A Level results that support them to go to world-class universities across the globe, with destinations including the US, UK, Australia, Canada, Hong Kong and Europe.

Academic Excellence

At DBIS Sixth Form, we are dedicated to providing our students with the best possible education. In line with this, we are proud to announce that we have introduced scholarships for students with strong academic pedigrees. These scholarships cover 25% of tuition fees and are awarded based on academic merit. We believe that every student deserves the opportunity to receive an excellent education, and we are committed to making this possible.

Dedicated Campus

Our Sixth Form is located in the beautiful environment of Discovery Bay, easily accessible by MTR, bus and ferry. The stunning surroundings provide a perfect backdrop for learning and exploration. Our students have access to outstanding facilities as well as a wide range of extracurricular activities.

Balanced Individuals

With small class sizes and tailored education, students at DBIS receive individual attention and support from their teachers. The holistic education that our students enjoy is second to none. Not only are they academically successful but they also develop into well-rounded individuals who are ready to take on the world.



Experts in Education

DBIS's dedicated Sixth Form team offers exceptional support and guidance to students throughout their Sixth Form journey. Strong emphasis is placed on the pastoral care of students, with regular 1:1 mentoring sessions playing an important role in ensuring students get the most from their education. University and careers guidance is provided by our dedicated counsellor to ensure that all students are well prepared and given tailored guidance for the competitive post-secondary environment.

Achieving Potential

We believe that every student has the ability to achieve great things, and we are committed to helping them reach their full potential. If you want your child to receive an excellent education in a supportive and nurturing environment, DBIS Sixth Form is the perfect choice.

Discovery Bay International School

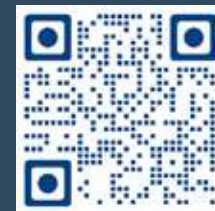
Discovery Bay, Lantau Island

Tel: 2914 2142 (Kindergarten) / 2987 7331 (Primary / Secondary)

Email: dbis@dbis.edu.hk

Website: www.dbis.edu.hk

Meet the Team



DISCOVERY BAY
INTERNATIONAL SCHOOL
愉景灣國際學校
Discovery Bay, Lantau Island, Hong Kong

www.dbis.edu.hk
+852 2987 7331

Apply for Sixth Form (Y12 & 13)

A Level & BTEC courses



Scholarships Available

25% off for two years

Our students graduate as



High Achievers



Confident Communicators



Balanced Individuals



Creative Thinkers



Effective Collaborators



TRANSFORMING LIVES TOGETHER.....

Concordia International School is a leading yet affordable international school located in the heart of Kowloon, Hong Kong. As a school that has a reputation for excellence, Concordia offers students a high-quality education in a safe and nurturing environment. We take pride in the fact that there are no capital levies or debentures, an excellent education should be for everyone. Come join our vibrant community of learners where our school is more than just a place to learn; it is a place to thrive.

Our school provides a rigorous American curriculum leveraged by a comprehensive school based assessment that challenges students to strive for academic excellence. Class sizes are small, with customised input from teachers to leverage student growth. Our graduates often attend elite Universities around the world, including the Russell Group, Ivy League, and the top 5 closer to home in Hong Kong.

Our approach to education goes beyond traditional academics, we strive to transform lives. We believe that each student brings unique strengths, talents, and passions to the table. That's why we provide a diverse range of extracurricular activities that encourage our students to explore their interests, connect with others, and cultivate personal growth.

At our school, you will find a warm and welcoming atmosphere where everyone is valued and supported. Our dedicated faculty and staff foster a culture of collaboration, and creativity. From service learning initiatives to club activities to cultural celebrations, there's always something happening to bring our school community closer together. This is not limited to Hong Kong, our students engage in overseas trips to enhance their global perspectives. Furthermore, with a range of extracurricular activities such as fine arts, music, and sports, students are encouraged to explore their passions and develop new interests.

We believe in the power of community and maintaining a nurturing environment where students can develop strong personal connections that last a lifetime. At Concordia International School, we prepare our students to be global citizens who are equipped to thrive in an ever-changing world. Through technology led, positive education, with an emphasis on student centred learning, we facilitate growth in core skills for life in the 21st Century.

Come join our Concordia family, and start your learning journey.



- American Curriculum with full WASC Accreditation
- Tailored Individual Learning Program with Great Learning Support and Small Class Sizes
- A Caring and Supportive Learning Community
- Technology led education with a 1:1 Macbook Program

No Debentures or Capital Levies

Contact us
for more
information

68 Begonia Road,
Yau Yat Chuen.

2789 9890

www.cihs.edu.hk



Mulberry House is paving the way for bilingual education in Hong Kong

Founded by Jessica Ye Trainor, Mulberry House's mission is to provide young children with stimulating learning opportunities and nurture them into global citizens fluent in both English and Chinese, instilling a lifelong love of learning.

Established in 2015 as one of the first Mandarin-focused and bilingual playgroups and kindergartens, our educators partner with parents to provide a combination of modern Western approaches with traditional Chinese values. We have a deep understanding and appreciation for the Chinese language and culture, which we incorporate into our intercultural program to develop students' language skills, critical thinking abilities, and strong academic foundation.

Curriculum

Mulberry House's curriculum is based on the United Kingdom's Early Years Foundation Stage (EYFS) teaching framework, which has been extensively researched. The curriculum focuses on three primary areas of learning: Personal, Social and Emotional Development, Communication & Language, and Physical Development. In addition, the school offers various extracurricular activities in sports, music, drama, and STEAM.

Reggio Emilia Approach

The Reggio Emilia approach influences Mulberry House's curriculum, prioritizing early childhood education based on the idea that children have "100 languages" to express their thoughts and feelings. This approach emphasizes respecting each child's development, creating a positive learning environment, and encouraging inquiry and exploration to enable children to reach their full potential.

Day to day learning

Mulberry House has a 50-50 English and Mandarin morning immersion program and four afternoon options (full English or Mandarin immersion, or a 60-40 split). Native-speaking educators help children learn in both languages naturally.

Forest School

The Forest School program offers outdoor learning opportunities that foster lifelong positive experiences for students. We believe that outdoor learning is just as important as traditional classroom settings for a child's development and well-being. Students go on weekly field trips to farms and hiking trails, and learn about crop cultivation by growing their own plants. These hands-on experiences develop concrete knowledge and practical skills that enhance classroom learning, while promoting confidence, self-esteem, independence, and resilience.



Mulberry House
International Kindergarten
懋柏禮國際幼稚園

Raising Bilingual Learners,
Nurturing Global Citizens.
培養雙語學童，孕育世界公民

PATHWAY TO THE BEST BILINGUAL EDUCATION

Playgroup 英普遊戲班

6 - 32 mths

Pure English
Pure Mandarin



Playgroup

PN/Kindergarten 英普雙語教育

2 - 6 yrs

50/50 Bilingual Stream
70/30 International Stream
Pure Mandarin Stream



Mandarin & English Immersion

Extra Curricular Activities 課外增潤課程及假日營

2.5 - 6 yrs

Forest School, Fencing, Drama,
Multi-Sports, Little Chef, S.T.E.A.M.,
Academics in Literacy and Math



Holiday Camps



Inquiry - based



Forest School Programme



Indoor Playground

Mulberry House International Kindergarten

Southside: Shops 1 & 2, G/F, Ocean Court,
3 Aberdeen Praya Road, Aberdeen, HK | +852 5598 0555
Tai Po: LG/F Kindergarten, Mayfair By The Sea I,
23 Fo Chun Road, Tai Po, HK | +852 5598 0909
Website: <https://mulberryhousekg.com/>



BOOK NOW!

ADMISSION OPEN NOW

Book for a private tour and meeting for the best bilingual education plan for your child today | 為您的孩子制定最好的雙語教育計劃，立即預約校園參觀吧!

www.mulberryhousekg.com | admissions@mulberryhousekg.com



30,000 sq. ft



Indoor playground



Garden/sandpit



花園/沙池

Southside | Tai Po | Central



#mulberryhousekg

Loving for Today, Learning for Tomorrow, Living for Eternity

Small World Christian Kindergarten opened in 1986 with a vision to build a preschool that offers whole-child development opportunities, and an international curriculum centered on Christian values.

Located in a picturesque heritage building in Mid-Levels, Small World offers classes for children aged 2 years 8 months to 6 years old, and also a playful programme for toddlers in its community.

Inside its charming red brick walls are spacious classrooms and sunlit outdoor corridors purposefully designed to encourage children to play and embrace their curiosity. Small World also has a beautiful outdoor garden, a "mud kitchen," and a spacious playground where children can enjoy outdoor activities daily.

The community of current and alumni families at Small World is often described as "one big family," and its long-lasting network is a testament to their shared love and appreciation for the school.

A nurturing environment for young learners

Small World has over 37 years of experience in early childhood education, and is focused on laying the foundation for young learners to know themselves, others, God, and the world. Their nurturing and loving teaching staff is at the heart of the school. You will find qualified and passionate early



years teachers in each class, ensuring each and every child is loved from the moment they step through their gates.

Education at Small World revolves around whole-child development. The school aims to nurture excellence in every child, and they look at each child individually to provide the best education he/she deserves. Their teachers support the children to become socially confident and happy individuals who are eager to interact with others and express themselves at Small World and beyond. Two-way communication between parents and the school is also key in supporting the child's emotional stability and learning.

Supporting your child's desire to learn through play

Learning at Small World is play-based, allowing the child's curiosity to lead while the teachers appropriately scaffold the path of learning. The school provides an enabled learning environment that supports the children's intrinsic desire to learn. The curriculum interweaves IEYC (International Early Years Curriculum), Biblical foundation, and the Mandarin language. They are the first IEYC-accredited school in Hong Kong, and the captivating IEYC unit topics provide fun themes for the children to explore.

Small World Christian Kindergarten

10 Borrett Road, Mid-Levels

Tel: 2525 0922

Email: office@smallworld.edu.hk


Website: smallworld.edu.hk



small world
CHRISTIAN KINDERGARTEN



10 Borrett Road Mid-Levels Hong Kong

 (+852) 2525 0922

 admissions@smallworld.edu.hk

 smallworld.hk

 SmallWorld.HK

  INTERNATIONAL CURRICULUM ASSOCIATION



Since 1986, Small World Christian Kindergarten has offered an international curriculum in a playful and caring environment for young learners. We invite you to come explore our vibrant classrooms and outdoor space, and to meet our friendly students and nurturing teachers!

Book a School Tour today!





The Best of British education for a global future

Oxbridge School is a popular British curriculum school providing personalised learning in deliberately small class sizes with strong academics, built upon our outstanding thematic learning programme. English language and literacy are prioritised through daily guided reading lessons and all students study Mandarin. There is experienced professional support for English as an additional language.

Our **school values** pervade all that we do: Good manners, Hard Work, Care for the environment, and Selflessness are at our core. And we aim to develop students who Care, Learn and Aspire, guided by our dedicated teachers who Nurture, Educate and Inspire

We prioritise the **mental wellbeing** of our students and in regular Assemblies and weekly class tutorials and individual sessions we help our students to remain healthy, happy and excited about the possibilities of the future. **Sport** makes students fitter, happier and healthier and more satisfied with life and in our curriculum, there are weekly sports lessons alongside further opportunities after school such as La Liga football.

Our bespoke **curriculum** allows us to teach with an emphasis on inquiry and students are encouraged to analyse, question, think about, create, take apart ideas, and ask "why?" In this way, they understand and develop skills that enable them reach their true potential, go beyond expectations, and be fully prepared for the future.

We great importance on **ECA's** such as team sports and performing arts, that help students develop skills in leadership and teamwork and to understand the intricacies of competition and camaraderie and we encourage students to participate in activities that deepen their understanding of academic subjects such as international maths competitions.

The unique **Oxbridge Activity Passport** provides 20 different opportunities for students in each year group to learn new skills, participate in different activities and to visit new places outside of school, helping our students gain wider skills to become well rounded citizens of the future.

Oxbridge School **works closely with our parents**. Teachers are in daily communication, and parents regularly come into school and classrooms at our monthly Coffee Mornings, our fortnightly reading sessions and at regular social events such as our Concerts, Sports Day and Family Fun Days.

All in all, Oxbridge School provides the best British education to prepare students for a global future



Oxbridge School

G/F B & 1F, Star Ruby, 1 San Wai Street, Hung Hom, Kowloon
Tel: 2612 1888
Email: admissions@oxbridgeschool.hk
Website: www.oxbridgeschool.hk

ADMISSIONS OPEN NOW!

Why choose Oxbridge ?

- » Outstanding Thematic Curriculum
- » Rigorous Progression and Integration of Subjects
- » Support for English as a Second Language
- » Oxbridge Activity Passport
- » Deliberately Small Class Sizes (max.15 students)
- » Modest Tuition Fees (No Debuture or Capital Levy)

For more information, contact us at

6368 0125

admissions@oxbridgeschool.hk

SCAN & BOOK A SCHOOL VISIT

Conveniently located at G/F & 1/F, Star Ruby, 1 San Wai Street, Hung Hom

Unleashing full potential in the early years at MAGART

By Khardine Rendall, Director of School Development
MAGART International Kindergarten

With 90% of brain development happening before the age of 5, the role of early childhood education (ECE) is not simply to prepare children for primary school but also to set the foundations for lifelong learning, well-being and future abilities.

Through development of strong social, emotional, cognitive and physical skills; early childhood education is the building blocks for a successful future, and it is important for parents to consider carefully and make the right choice for their child and family.

What are some of the things parents can be looking for?

Environment

It is important to find an environment in which your child feels happy, safe and supported. When these basic physiological needs are taken care of children can truly start to learn and develop.

The environment must also be developmentally appropriate, have adequate space as well as appropriate and plentiful resources. At MAGART our environment is considered the 'third teacher' and each of our campuses is spacious and inviting, and well equipped with quality and natural resources for discovery and hands on learning.

Curriculum & Learning Style

You must consider which curriculum and learning style is most suitable for your child and will challenge and support them to reach their full potential.

Do you think your child will learn best in a passive and teacher-directed way? Or would they learn best through exploration, hands on learning and development of critical and logical thinking skills?



MAGARTs Enhanced EYFS curriculum is balanced with school based Chinese and logical-thinking mathematics to ensure we have a rigorous and challenging curriculum to support strong development of all 7 areas of learning. This ensures we can support all of our families into the next steps of their learning journeys (whether that be at top International or Local primary schools...or some families who are not yet sure which path they would like to take).

Visit our website to find out more about our school, to book a private school tour, play day, open day or trial class: www.magartedu.com

MAGART International Kindergarten

Whampoa Campus

Shop G3A, Site 7, Whampoa Garden, 9 Tak On Street, Hong Kong

Tel: 2786 9314 / 2788 0788

Whatsapp: 9879 1509

Email: info.wp@magartedu.com

Kornhill Campus

16 Hong Shing St, Kornhill, Quarry Bay, Hong Kong

Tel: 2786 9152 / 2786 9189

Whatsapp: 6717 3175

Email: info.tk@magartedu.com

Fanling Campus

G/F, Phase 1, Fanling Centre, New Territories, Hong Kong

Tel: 2677 8109

Whatsapp: 9445 8322

Email: info.fl@magartedu.com

Website: magartedu.com



OPEN FOR
PN-K3
APPLICATION

MAGART

瑪歌瑞特國際幼稚園暨幼兒園
MAGART INTERNATIONAL KINDERGARTEN AND NURSERY

Accepting application for 0.5-6 years

- ✓ 培養主動學習者
Active Learning
- ✓ 國際學生社群
Diverse Student Body
- ✓ 探究式學習與學術兼備
Balance of Exploratory Learning & Academic Excellence



學生來自超過21國家
Students from
over 21 countries

不一樣的奇妙與成長
An Extraordinary Learning Experience

100% 學生入讀心儀小學 Primary Placement:

- 喇沙小學
La Salle Primary School
- 聖保祿天主教小學
St. Paul's Primary Catholic School
- 聖方濟各英文小學
St. Francis of Assisi's English Primary School
- 聖公會嘉福榮真小學
S.k.h. Ka Fuk Wing Chun Primary School
- 嘉諾撒聖瑪利學校
St. Mary's Canossian School
- 香港浸會大學附屬學校王錦輝中小學
HKBU Affiliated School Wong Kam Fai Primary School
- 香港嘉諾撒學校
Canossa School Hong Kong
- 救恩學校(小學部)
Kau Yan School (Primary Section)
- 弘立書院
ISF Academy
- 漢基國際學校
Chinese International School
- 宣道會劉平齋紀念國際學校
Christian Alliance P.C. Lau Memorial Int'l School
- 香港國際學校
Hong Kong International School



黃埔 Whampoa

九龍紅磡黃埔花園第7期地下G3A號舖
(黃埔站D2出口)
Shop G3A, Site 7, Whampoa Garden,
9 Tak On Street(Whampoa Station Exit D2)
T: 2786 9314 📞 9879 1509

康怡 Kornhill

香港鯉魚涌康盛街16號康怡花園
(鄰近康怡花園俱樂部)
16 Hong Shing St, Kornhill, Quarry Bay
(Near Kornhill Recreation Club)
T: 2786 9189 📞 6717 3175

粉嶺 Fanling

新界粉嶺中心1期A及B座地下
(粉嶺站A出口)
G/F, Phase 1, Fanling Centre, New Territories
(Fanling Station Exit A)
T: 2677 8109 📞 9445 8322



2023 SUMMER PROGRAMS

CURATED FOR AGES 3 - 14

UNLOCK THE FUTURE

JUNE 19 - AUGUST 31, 2023



- ROBOTICS
- CODING
- A.I.
- DRONES
- MINECRAFT
- ROBLOX
- SCIENCE
- ENGINEERING

REGISTRATION OPENS MAY 1ST
PROGRAMS INFO AND SCHEDULE AVAILABLE MAY 1ST, 2023

SCAN TO WHATSAPP US
TO BE FIRST NOTIFIED WITH SPECIAL DISCOUNTS



WHATSAPP 6211-1968



Directory

ABC Pathways International Kindergartens Tai Koo Campus

G/F, Block 8&9, Kornhill Garden,
1124 King's Road, Quarry Bay
Tel: 2110 1211
Email: enquiry.tk@ABCpathways.edu.hk
Whampoa Campus
Shop No. 25, G/F, Site 11,
Whampoa Garden, Hung Hom
Tel: 2110 9993
Email: enquiry.wp@ABCpathways.edu.hk
Website: abcpathways.edu.hk
Year founded: 2014
Curriculum: International

Alison's Letterland International Kindergarten

Flat C, 2/F, Marco Polo Mansions,
10 Cleveland Street, Causeway Bay, Hong Kong
Tel: 2504 1978
Email: admin@ais.edu.hk
Website: www.international-playgroup-kindergarten.com
Year founded: 1996
Curriculum: Early Years Foundation Stage

American International School

125 Waterloo Road, Kowloon Tong, Hong Kong
Tel: 2336 3812
Email: admissions@ais.edu.hk
Website: www.ais.edu.hk
Year founded: 1986
Curriculum: US Common Core State Standards and AP Courses



American School Hong Kong

6 Ma Chung Road, Tai Po, N.T.
Tel: 3919 4111
Email: admissions@ashk.edu.hk
Website: www.ashk.edu.hk
Year founded: 2016
Curriculum: US, IB

Anchors International Nursery

Shop G07B, G/F-2/F, Fuller Gardens,
8 Chui Lok Street, Tai Po
Tel: 2664 4133
Website: www.anchors.edu.hk
Year Founded: 2008

Anchors International Nursery (Constellation Cove Campus)

Kindergarten Premises, Constellation Cove,
1 Hung Lam Drive, Tai Po
Tel: 2650 6660
Website: www.anchors.edu.hk

Anchors Kindergarten and International Nursery

1A & 1B, 1/F & 2/F Wing Fai Centre,
2-10 Luen Chit Street, Fanling, N.T.
Tel: 2676 3199/2676 2199
Email: fanling@anchors.edu.hk

Anfield International Kindergarten

5 Cumberland Road, Kowloon Tong, Kowloon
Tel: 2794 3668
Email: admin@anfield.edu.hk
Website: www.anfield.edu.hk
Year founded: 1999

Anfield International Kindergarten and Nursery

L2, Phase 1, Laguna Verde,
8 Laguna Verde Avenue, Hung Hom, Kowloon
Tel: 2766 3882
Email: admin-lv@anfield.edu.hk

Antonia International Kindergarten

Shop Nos. 31-33, 78-80 & 84-87, LG/F,
Tsuen Wan Garden Phase I,
15-23 Castle Peak Road, Tsuen Wan, New Territories
Tel: 2612 0984
Email: admin@antonia-kindergarten.com
Website: www.antonia-kindergarten.com
Year founded: 2014
Curriculum: Early Years Foundation Stage

Australian International School Hong Kong

3A Norfolk Road, Kowloon Tong
Tel: 2304 6078
Email: info@aishk.edu.hk
Website: www.aishk.edu.hk
Year founded: 1995
Curriculum: Australian National Curriculum, IBDP

Baumhaus Wan Chai

1/F Kar Yau Building,
36-44 Queen's Road East, Wan Chai
Tel: 2321 5898
Website: www.baumhaus.com.hk

Baumhaus Harbour City

Suite 614-615, World Commerce Centre,
11 Canton Road, Tsim Sha Tsui, Hong Kong
Tel: 3585 8577
Website: www.baumhaus.com.hk

Bloom KKCA Academy

7 Pui Tak Street, Shek Kip Mei
Tel: 2110 4788
Email: admissions@bnb.edu.hk
Website: www.bloom.edu.hk



Blooming Buds Preschool

Unit 7, 1/F, Island Crest, 8 First Street,
Sai Ying Pun, Hong Kong
Tel: 2887 9921
Email: enquiry@bloomingbuds.com.hk
Website: www.bloomingbuds.com.hk
Year founded: 2012
Curriculum: Reggio Emilia Approach and the Creative Curriculum

Box Hill (HK) International Kindergarten & Pre-school

Ma On Shan Campus
G/F, Tower 10, Phase 1, Vista Paradiso,
No. 2 Hang Ming Street, Ma On Shan
Tel: 2750 6323
Email: mos@boxhill.edu.hk
Fo Tan Campus
No. 327 on Podium of Jubilee Square,
2-18 Lok King Street, Fo Tan, New Territories
Tel: 2688 2161
Email: ft@boxhill.edu.hk
Tseung Kwan O Campus
Shop 2 & 3, Level G/F & 1/F, Mount Verdant,
48 Chui Ling Road, Tseung Kwan O, New Territories
Tel: 2623 0023
Email: tko@boxhill.edu.hk
Website: www.boxhill.edu.hk
Year founded: 2004
Curriculum: Early Years Foundation Stage

Future-proof Your Kids Today in a Digital Learning Wonderland!

Novalearn is a STEAM online learning platform where edutech meets edutainment. Expect fun gamification and project-based learning tailored for kids aged 6 to 11 years old. By encouraging curiosity, empathy, and a positive outlook, we're redefining extra-curricular learning for the new generation!

Why Novalearn?



Developed by experienced educators

Equipped with global, critical-minded perspectives, our IB-certified teachers and vetted specialists shape courses according to international standards.



Providing a holistic learning experience

Anchored on the principles of STEAM education, our courses help kids build life skills, get creative, and grow through project-based and experiential learning.



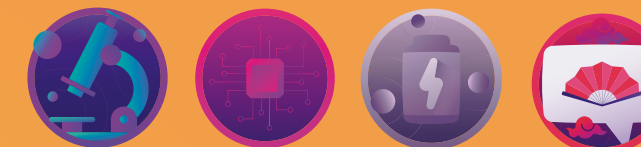
Using gamification to turn learning into playing

Courses may be self-paced, but your child won't be alone! They'll join a vibrant, active community of kids to collect points in a safe, moderated environment.

A fun-filled world of edutainment awaits your child!



Art Engineering English Math



Science Technology Future Ready Mandarin



Sign up now for a free trial!
www.novalearn.org

Brightland International Kingdergarten

Shop 1, Wing A, Block A, Tak Nga Court,
2 Hiu Wan Road, Tai Po
Tel: 2651 3311
Email: info@brightland.edu.hk
Website: brightland.edu.hk
Year Founded: 2016

British Council International Pre-School

1/F, British Council, 3 Supreme Court Road, Admiralty
Tel: 2913 5290
Email: preschool@britishcouncil.org.hk
Website: www.britishcouncil.hk
Year founded: 2016
Curriculum: Other

Canadian International School of Hong Kong

36 Nam Long Shan Road, Aberdeen
Tel: 2525 7088
Email: schoolinfo@cdnis.edu.hk
Website: www.cdnis.edu.hk
Year founded: 1991
Curriculum: IB and OSSD

California School

3/F, Front Block, Lung Ma Building,
550 Nathan Road, Yau Ma Tei
Tel: 2388 9844 / 9822 7549
Email: info@californiaschool.edu.hk
Website: www.californiaschool.edu.hk
Year founded: 1992
Curriculum: IGCSE, A-Levels

Cannan Kindergarten (Whampoa Garden)

Portion of G/F, Commercial Podium,
Site 10, Whampoa Garden, Hung Hom
Tel: 2330 3336
Website: www.cannan.edu.hk
Year Founded: 1997

Carmel School Hong Kong Elsa High School Campus

460 Shau Kei Wan Road, Shau Kei Wan, Hong Kong
Tel: 3665 5388

Carmel Elementary Campus

10 Borrett Road, Mid-Levels, Hong Kong
Tel: 3665 5388

Holly Rofé Early Learning Centre

70 Robinson Road, Mid-Levels, Hong Kong
Tel: 2249 7600
Email: admissions@carmel.edu.hk
Website: www.carmel.edu.hk
Year founded: 1991

Cherish English School & Kindergarten

Shop KG01, G/F & M/F, Sai Wan Estate,
East Terrace, Kennedy Town
Tel: 2855 0080
Website: www.cherish.edu.hk
Year Founded: 1988

Chinese Academy

77 Caroline Hill Road, Causeway Bay, Hong Kong
Tel: 2499 8000
Email: enquiry@caps.edu.hk
Website: www.caps.edu.hk
Year founded: 2017
Curriculum: Primary: Bilingual Immersion in English & Chinese (Putonghua);
Secondary: IB MYP, IB DP

Chinese International School

1 Hau Yuen Path, Braemar Hill, North Point
Tel: 2510 7288
Email: cis_info@cis.edu.hk
Website: www.cis.edu.hk
Year founded: 1983
Curriculum: Primary: balanced and integrated dual language curriculum in both English and Chinese;
Secondary: IBMYP & IBDP. In Year 10, students study the IB MYP in our satellite campus in Hangzhou (CIS Hangzhou)

Christian Alliance International School

33 King Lam Street, Lai Chi Kok, Kowloon
Tel: 3699 3862 / 3699 3863 / 3699 3865
Email: admissions@caisbv.edu.hk
Website: www.caisbv.edu.hk
Facebook: @cais.hk
Instagram: @caisbv

Christian Alliance P.C. Lau Memorial International School

2 Fu Ning Street, Kowloon, Hong Kong
Tel: 2713 3733
Email: info@capcl.edu.hk
Website: www.capcl.edu.hk
Curriculum: Canada's Alberta Curriculum



Concordia International School

68 Begonia Road, Yau Yat Chuen
Tel: 2789 9890
Email: office@concordiaintl.edu.hk
Website: www.cihs.edu.hk
Year founded: 1990
Curriculum: North American



Creative Kindergarten

G/F, 6 Rutland Quadrant, Kowloon Tong
Tel: 2336 1139
Website: www.creative.edu.hk
Year Founded: 1984

Creative School Continuum

Creative Primary School's Kindergarten, Creative Primary School

2A Oxford Road, Kowloon Tong, Kowloon, HK
Tel: 2336 1212 / 2336 0266
Email: cps@creativeprsch.edu.hk
Website: www.creativeprsch.edu.hk

Creative Secondary School

3 Pung Loi Road, Tseung Kwan O, Sai Kung
Tel: 2336 0233
Email: admin@css.edu.hk
Website: www.css.edu.hk
Year founded: 2006
Curriculum: HKDSE, IBMYP, IBDP

Dalton School Hong Kong

1/F & 2/F, Imperial Cullinan,
10 Hoi Fai Road, Kowloon
Tel: 3612 4660
Email: info@dshk.edu.hk
Website: www.dshk.edu.hk
Year founded: 2017
Curriculum: US Common Core Standards
Tsinghua Chinese



playtimes

your expert guide to family life



OFFERING AN
HONEST AND
INFORMATIVE
PERSPECTIVE
ON PARENTING
IN HONG KONG

As Hong Kong's longest-running parenting magazine, Playtimes covers everything from childcare and education to health, food and fun activities, helping you make the best decisions for you and your family.

A quarterly publication, Playtimes can be found across Hong Kong at over 150 locations.

Playtimes is also online: www.playtimes.com.hk

  PlaytimesHK



David Exodus Kindergarten

Upper Ground Podium, Block 4,
Julimount Garden, Tai Wai, Shatin, N.T.
Tel: 2699 0100
Website: www.davidexodus.edu.hk
Year founded: 1989
Curriculum: Own

Deborah Educational Institute:**Deborah International Pre-school /
Play school (Tseung Kwan O)**

Kindergarten Tower, Bauhinia Garden,
11 Tong Chun Street, Tseung Kwan O
Tel: 3403 4393

Curriculum: International

**Deborah International Pre-school / Play-school
(Hung Hom)**

1/F, Site 2 and G/F, Site 7,
Whampoa Garden, Hung Hom, Kowloon
Tel: 2362 8379 (Site 2) / 2774 1669 (Site 7)

Curriculum: International / Japanese International

Delia Memorial School (Glee Path)

1-3 Glee Path, Mei Foo Sun Chuen, Kowloon
Tel: 2741 5239

Email: gp@deliagroup.edu.hk

Website: www.deliagp.edu.hk

Curriculum: HKDSE, IBDP

DSC International School

5-7, Tai Fung Avenue, Taikoo Shing
Tel: 3658 0400

Email: admissions@delia.edu.hk

Website: www.delia.edu.hk

Year founded: 1987

Curriculum: Ontario Curriculum / Alberta Curriculum,
Canada

**Diocesan Boys School Primary Division
& Diocesan Boys School**

131 Argyle Street, Mongkok, Kowloon
Tel: 2711 5191

Email: dbsadmin@dbs.edu.hk

Website: www.dbs.edu.hk

Year founded: 1869

Curriculum: HKDSE, IBDP

Diocesan Girls' School

1 Jordan Road, Kowloon
Tel: 2277 9100

Email: info@dgs.edu.hk

Website: www.dgs.edu.hk

Year founded: 1860

Curriculum: HKDSE, A-Levels

Discovery Bay International School

Discovery Bay, Lantau Island

Tel: 3987 7331

Email: admissions@dbs.edu.hk

Website: www.dbis.edu.hk

Year founded: 1983

Curriculum: British National Curriculum and
International Primary Curriculum

**Discovery Mind Kindergarten/
International Play Centre****Discovery Bay Campus**

401, Marina Commercial Centre, G/F,
2-8 Coastline Villa, Peninsula Village, Discovery Bay
Tel: 2987 8088

Email: dmk@discoverymind.edu.hk

Tung Chung Campus

G/F, Seaview Crescent,
No. 8 Waterfront Road, Tung Chung
Tel: 2987 8070

Email: dmtc@discoverymind.edu.hk

Discovery Mind Primary School**Discovery Bay Campus**

1/F, Shop 102, 92 Siena Avenue,
North Plaza, Discovery Bay
Tel: 2914 2202

Email: admission_db@discoverymind.edu.hk

Tung Chung Campus

G/F, Shop A-D Seaview Crescent,
No. 8 Waterfront Road, Tung Chung
Tel: 2915 0666

Email: admission_tc@discoverymind.edu.hk

Website: www.discoverymind.edu.hk

Year founded: 2012

Curriculum: IPC

Discovery Montessori Academy

Block 1, 92 Siena Ave, Discovery Bay,
Lantau Island, Hong Kong
Tel: 2812 9206

Email: primary@dms.edu.hk

Website: www.dms.edu.hk

Year founded: 2015

Curriculum: Montessori

Discovery Montessori School**Discovery Bay Campus**

Shop 101, 1/F, 92 Siena Avenue,
Discovery Bay, Lantau Island, Hong Kong
Tel: 2987 1201

Email: enquiry@discoverymontessori.info

Central Campus

3/F, Mandarin Building, 34-43 Bonham Strand,
Central, Hong Kong
Tel: 2850 8006

Email: enquiry@dms.edu.hk

Website: www.dms.edu.hk

Year founded: 2010

Curriculum: Montessori

EIS International Preschool

No.1 San Wai Tsuen, San Tin, Yuen Long

Tel: 2889 7680 / 2889 7681

Fax: 2889 7331

Email: info@eminent-education.org

Website: www.emient-education.org

IG/Facebook: theeminenteducation

Year founded: 2020

Curriculum: EYFS, Nature-based Preschool

**Elsa High School,
Carmel School Association**

460 Shau Kei Wan Road, Shau Kei Wan

Tel: 3665 5388

Email: elsahighschool@carmel.edu.hk

Website: www.carmel.edu.hk

Year founded: Carmel School Association was
founded in 1991 and Elsa High School was established
in 2009

Curriculum: International Baccalaureate

English Schools Foundation

25/F, 1063 King's Road, Quarry Bay, Hong Kong

Tel: 3762 2411

Email: info@esfcentre.edu.hk

Website: www.esf.edu.hk

Year founded: 1967

**ESF Abacus International Kindergarten**

1A Mang Kung Uk Road, Clearwater Bay

Tel: 2719 5712

Email: kinder@abacus.edu.hk

Website: www.abacus.edu.hk

Year founded: 2002

School Type: Private

Curriculum: IB Primary Years Programme

ESF Beacon Hill School

23 Ede Road, Kowloon Tong

Tel: 2336 5221

Email: bhs@bhs.edu.hk

Website: www.beaconhill.edu.hk

Year founded: 1967

School Type: ESF

Curriculum: IB Primary Years Programme

ESF Bradbury School

43C Stubbs Road, Happy Valley

Tel: 2574 8249

Email: enquiries@bradbury.edu.hk

Website: www.bradbury.edu.hk

Year founded: 1992

School Type: ESF

Curriculum: IB Primary Years Programme

ESF Clearwater Bay School

DD 229, Lot 235, Clearwater Bay Road, Clearwater Bay

Tel: 2358 3221

Email: info@cwbs.edu.hk

Website: www.cwbs.edu.hk

Year founded: 1980

School Type: ESF

Curriculum: IB Primary Years Programme

ESF Discovery College

38 Siena Avenue, Discovery Bay, Lantau Island

Tel: 3969 1000

Email: office@dc.edu.hk

Website: www.discovery.edu.hk

Year founded: 2007

School Type: Private

Curriculum: IB Primary Years Programme,
IB Middle Years Programme, IB Diploma

ESF Glenealy School

7 Hornsey Road, Mid Levels

Tel: 2522 1919

Email: enquiry@glenealy.edu.hk

Website: www.glenealy.edu.hk

Year founded: 1959

School Type: ESF

Curriculum: IB Primary Years Programme

ESF Hillside International Kindergarten

43B Stubbs Road, Mid-Levels East

Tel: 2540 0066

Email: kinder@hillside.edu.hk

Website: www.hillside.edu.hk

Year founded: 1999

School Type: Private

Curriculum: IB Primary Years Programme

ESF Island School

20 Borrett Road, Mid Levels

(permanent campus currently under redevelopment)

Temporary campuses:

Island School Sha Tin Wai (Years 7, 8, 12, 13)

Pok Hong Estate, Area 5A, Sha Tin, New Territories

Island School Tai Wai (Years 9, 10, 11)

Estate Secondary School No. 2, Sun Chui Estate, Sha

Tin

Tel: 2524 7135

Email: school@online.island.edu.hk

Website: www.island.edu.hk

Year founded: 1967

School Type: ESF

Curriculum: GCSE/IGCSEs, IB Diploma,
Applied Learning Programme (BTEC qualifications)

ESF Jockey Club Sarah Roe School

2B Tin Kwong Road, Homantin

Tel: 2761 9893

Email: info@jcsrs.edu.hk

Website: www.jcsrs.edu.hk

Year founded: 1985

School Type: ESF

Curriculum: Primary Learning Programme, ASDAN
Award Programme, Transition Challenge Programme,
Towards Independence Challenge

ESF Kennedy School

19 Sha Wan Drive, Pokfulam

Tel: 2579 5600

Email: admissions@kennedy.edu.hk

Website: www.kennedy.edu.hk

Year founded: 1961

School Type: ESF

Curriculum: IB Primary Years

ESF King George V School

2 Tin Kwong Road, Homantin

Tel: 2711 3029

Email: office@kgv.edu.hk

Website: www.kgv.edu.hk

Year founded: 1902

School Type: ESF

Curriculum: GCSE/IGCSEs, IB Diploma,
Applied Learning Programme (BTEC qualifications)

ESF Kowloon Junior School

20 Perth Street, Homantin, Kowloon, Hong Kong

Tel: 3765 8700

Email: office@kjs.edu.hk

Website: www.kjs.edu.hk

Year founded: 1902

School Type: ESF

Curriculum: IB Primary Years Programme

ESF Peak School

20 Plunketts Road, The Peak

Tel: 2849 7211

Email: office@peakschool.net

Website: www.ps.edu.hk

Year founded: 1911

School Type: ESF

Curriculum: IB Primary Years Programme

ESF Quarry Bay School

6 Hau Yuen Path, Braemar Hill, North Point

Tel: 2566 4242

Email: office@qbs.edu.hk

Website: www.qbs.edu.hk

Year founded: 1926

School Type: ESF

Curriculum: IB Primary Years Programme

ESF Sha Tin College

3 Lai Wo Lane, Fo Tan, Sha Tin

Tel: 2699 1811

Email: info@shatincollege.edu.hk

Website: www.shatincollege.edu.hk

Year founded: 1982

School Type: ESF

Curriculum: IGCSE, IB Diploma

ESF Sha Tin Junior School

3A Lai Wo Lane, Fo Tan, Sha Tin, New Territories

Tel: 2692 2721

Email: info@sjs.esf.edu.hk

Website: www.sjs.edu.hk

Year founded: 1988

School Type: ESF

Curriculum: IB Primary Years Programme

ESF South Island School

50 Nam Fung Road, Aberdeen, Hong Kong

Tel: 2555 9313

Email: sis@sis.edu.hk

Website: www.sis.edu.hk

Year founded: 1977

School Type: ESF

Curriculum: GCSE/IGCSEs, IB Diploma,
IB Career-related Programme, Applied Learning
Programme (BTEC qualifications)

ESF Tsing Yi International Kindergarten

Maritime Square, 33 Tsing King Road, Tsing Yi

Tel: 2436 3355

Email: admissions@tyk.edu.hk

Website: www.esf.edu.hk

Year founded: 1999

School Type: Private

Curriculum

ESF West Island School

250 Victoria Road, Pok Fu Lam, Hong Kong
Tel: 2819 1962
Email: wis@wis.edu.hk
Website: www.wis.edu.hk
Year founded: 1991
School Type: ESF
Curriculum: GCSE/IGCSEs, IB Diploma, Applied Learning Programme (BTEC qualifications)

ESF Wu Kai Sha International Kindergarten

Level 1, Lake Silver Tower, 599 Sai Sha Road, Ma On Shan
Tel: 2435 5291
Email: kinder@wksk.edu.hk
Website: www.wksk.edu.hk
Year founded: 2009
School Type: Private
Curriculum: IB Primary Years Programme

EtonHouse International Pre-School

LG/F Kindergarten, Mayfair By The Sea I, 23 Fo Chun Road, Tai Po
Tel: 2780 5700
Email: enquiry@etonhouse.com.hk
Website: www.etonhouse.com.hk
Year founded: 1995
Curriculum: Inquiry based Reggio Emilia inspired curriculum

Fairchild Junior Academy

22/F, Park Commercial Centre, 180 Tung Lo Wan Road, Tin Hau, Hong Kong
Tel: 2898 1611
Email: info@fairchild.academy
Website: www.fairchild.academy
Year founded: 2016
Curriculum: Canadian Early Learning Framework

**Fairchild Kindergarten**

G/F & 1/F, Kong Chian Tower, Block 1, 351 Des Voeux Road West, Sai Ying Pun, Hong Kong
Tel: 2803 2638
Email: info@fairchild.edu.hk
Website: www.fairchild.edu.hk
Year founded: 2017
Curriculum: Canadian Early Learning Framework and Hong Kong Kindergarten Education Curriculum Guide

Forest House Waldorf School

Commercial Development Floral Villas, 18 Tso Wo Road, Sai Kung
Tel: 2792 6055
Email: info@foresthouse.edu.hk
Website: www.waldorf.edu.hk
Year founded: 2014
Curriculum: Waldorf

French International School

Blue Pool Road Campus
 165 Blue Pool Road, Happy Valley
Chai Wan Campus
 1 Cheung Man Road, Chai Wan, Hong Kong
Jardine's Lookout Campus
 34 Price Road, Jardine's Lookout, Hong Kong
Tseung Kwan O Campus
 28 Tong Yin Street, Tseung Kwan O, N.T.
Tel: 2577 6217
Email: info@lfis.edu.hk
Website: www.fis.edu.hk
Year founded: 1963
Curriculum: English National Curriculum to IGCSE then IBDP; French National Curriculum

**Funful Group of Schools**

Kindergarten Section
 No.20 Durham Road, Kowloon Tong, Hong Kong
Tel: 2337 6883
Email: kln20funful@yahoo.com.hk
Website: www.kindergarten.funful.hk/
Primary Section
 1 Cumberland Road, Kowloon Tong, Hong Kong
Tel: 2338 3434
Email: office@fsris.edu.hk
Website: www.fsris.edu.hk

Galilee International School - Kindergarten & Nursery

1/F Peace Garden, 2 Peace Avenue, Ho Man Tin, Kowloon
Tel: 2390 3000
Email: gis@gis.edu.hk
Website: www.gis.edu.hk
Year founded: 2014
Curriculum: International Baccalaureate (Primary Years Programme)

Garden House Pre-school and Playgroup

G/F, Silverstrand Shopping Centre, 7 Silverstrand Beach Road, Clearwater Bay
Tel: 2358 1177
Email: info@gardenhouse.edu.hk
Website: www.gardenhouse.edu.hk
Year founded: 2008
Curriculum: Waldorf

German Swiss International School

Main Campus (Primary & Secondary)
 11 Guildford Road, The Peak
Tel: 2849 6216
Pok Fu Lam Campus (Kindergarten & Lower Primary)
 162 Pok Fu Lam Road, Pok Fu Lam, Hong Kong
Tel: 2849 6217
Email: info@gsis.edu.hk
Website: www.gsis.edu.hk
Year founded: 1969
Curriculum: GSIS is a multi-language through-train school, from Kindergarten to Secondary, operating two parallel streams - the German International Stream and the English International Stream - following curricula that respectively lead to the German International Abitur Diploma and the International Baccalaureate (IB) Diploma following IGCSE examinations in Year 11

**Gigamind English Primary School**

Block A, 9 Tin Lung Road, Phase 6, Maywood Court, Kingswood Villas, Tin Shui Wai, N.T.
Tel: 2446 9883
Email: info@gigamind.edu.hk

Gigamind Kindergarten & Children's House

Block B, 9 Tin Lung Road, Phase 6, Maywood Court, Kingswood Villas, Tin Shui Wai, N.T.
Tel: 2446 9210
Email: kginfo@gigamind.edu.hk
Website: www.gigamind.edu.hk
Year founded: 2001
Curriculum: Own

Good Time International Play School & Kindergarten

L4 Block C & D, Shatin Plaza, Shatin, New Territories
Tel: 2601 3278
Whatsapp: 9445 5085
Email: info@deikindergarten.org
Website: www.goodtimeie.edu.hk

Grace Garden International Nursery and Kindergarten

Shop GA 12B - 14, G/F, Site A, 55 Tai Hong Street, Lei King Wan, Sai Wan Ho (MTR Station Exit A)
Tel: 2702 9778
Whatsapp: 6100 8339
Email: enquiry@gracegarden.edu.hk
Website: www.gracegarden.edu.hk
Year founded: 2015
Curriculum: Early Years Foundation Stage

Greenfield English (International) Kindergarten

The Long Beach
 Unit 1 Kindergarten Area UG/F, 8 Hoi Fai Road, The Long Beach, West Kowloon
Tel: 3514 8081
Website: www.greenfield.edu.hk
Year Founded: 2011
Tung Chung
 Podium, 1/F, Caribbean Bazaar, Caribbean Coast, 1 Kin Tung Road, Tung Chung, Lantau Island
Tel: 2162 5538
Website: www.greenfield.edu.hk
Lohas Park
 Kindergarten Site, Hemera, Lohas Park III, Tseung Kwan O
Tel: 2246 4801
Website: www.greenfield.edu.hk
Year Founded: 2016
Tseung Kwan O
 G/F., Shop & Podium Level 1, Nan Fung Plaza, Tseung Kwan O
Tel: 2274 2238
Website: www.greenfield.edu.hk
Mont Vert
 The Kindergarten, Mont Vert, 9 Fung Yuen Road, Tai Po
Tel: 3907 0178
Website: www.greenfield.edu.hk

Guidepost Montessori

Kennedy Town Campus
 1-2/F, 554 - 560 Queen's Road West, Sai Wan, Hong Kong
Tel: 3619 1136
Email: kennedytown@guidepostmontessori.com
Chai Wan Campus
 Harmony Garden, 9 Siu Wai Wan Road, Siu Wai Wan, Hong Kong
Tel: 2866 8260
Email: chawan@guidepostmontessori.com

Hamilton Hill International Kindergarten

2/F Tang Kung Mansion, 31 Tai Koo Shing road. Tai Koo
Tel: 2567-5454
Website: www.hhik.edu.hk

Han Academy

G/F-2/F, 33-35 Wong Chuk Hang Road, Aberdeen
Tel: 3998 6300
Email: admission@hanacademy.edu.hk
Website: www.hanacademy.edu.hk
Year Founded: 2017
Curriculum: Cambridge (Primary, Secondary, IGCSE, A Level), IBDP (candidate school)

Harrow International School Hong Kong

38 Tsing Ying Road, Tuen Mun
Tel: 2824 9099
Email: admissions@harrowsschool.hk
Website: www.harrowsschool.hk
Year founded: 2012
Curriculum: International

Highgate House School

2/F, 100 Peak Road, The Peak
Tel: 2849 6336
Website: www.highgatehouse.edu.hk
Year founded: 1992
Curriculum: Waldorf

HKCA Po Leung Kuk School

62 Tin Hau Temple Road, Hong Kong
Tel: 2416 3198
Email: info@plkis.edu.hk
Website: www.plkis.edu.hk
Year Founded: 2017
Curriculum: IBPYP

**Hong Kong Academy**

33 Wai Man Road, Sai Kung
Tel: 2655 1111
Email: admissions@hkacademy.edu.hk
Website: www.hkacademy.edu.hk
Year founded: 2000
Curriculum: IBPYP, IBMYP, IBDP

**Hong Kong Adventist Academy**

1111 Clear Water Bay Road, Sai Kung
Tel: 2623 0034
Email: info@hkaa.edu.hk
Website: www.hkaa.edu.hk
Year founded: 2011
Curriculum: Local curriculum with electives from the American curriculum

Hong Kong Chinese Christian Churches Union Logos Academy

Campus I
 No. 5, Ling Kwong Street, Tseung Kwan O, N.T.
Tel: 2337 2126
Campus II
 No. 1, Kan Hok Lane, Tseung Kwan O, N.T.
Tel: 2337 2123
Email: info@logosacademy.edu.hk
Website: www.logosacademy.edu.hk
Year founded: 2011
Curriculum: HKDSE, IBDP

Hong Kong International Learning Academy

Unit 7 & 8G Office Block One, North Plaza, 92 Siena Avenue, Discovery Bay
Tel: 2416 3198
Email: hkilacademy@gmail.com
Website: https://www.studyhkila.com

Hong Kong International School

Tai Tam Campus
 1 Red Hill Road, Tai Tam
Tel: 3149 7000
Repulse Bay Campus
 23 South Bay Close, Hong Kong
Tel: 2812 5000
Email: admissions@hkis.edu.hk
Website: www.hkis.edu.hk
Year founded: 1966
Curriculum: American with Advanced Placement courses offered in High School

Hong Kong Man Sang Kindergarten

Western District
 Shop A, G/F & 1/F, Nice Garden, 513-519 Queen's Road West
Tel: 2336 3232
Website: www.mansangkg.edu.hk
Year Founded: 2016
North Point
 2/F Foo Yet Kai Building, 52-60 Java Road, North Point
Tel: 2578 6763
Website: www.mansangkg.edu.hk
Year Founded: 1969
Email: admission@mansangkg.edu.hk

Hong Kong Nobel Preschool

G/F-2/F, 65 Waterloo Road, Kowloon
Tel: 2338 7899
Website: www.nobelpreschool.org
Year Founded: 2015

**International Christian School
Shek Mun Campus**

1 On Muk Lane, Shek Mun
Tel: 3920 0000

Ma On Shan Campus (International Kindergarten)

G/F, Kam Ho House (Block H),
 Kam Fung Court, Ma On Shan, Shatin, N.T.
Email: ics@ics.edu.hk
Website: www.ics.edu.hk
Year founded: 1991
Curriculum: American, AP

**International College Hong Kong
(Secondary)**

60 Sha Tau Kok Road, Shek Chung Au, Sha Tau Kok
Tel: 2655 9018
Email: info@ichk.edu.hk
Website: www.ichk.edu.hk
Year founded: 1984
Curriculum: IBPYP, English, IGCSE, IBDP

**International College Hong Kong
Hong Lok Yuen (Kindergarten & Primary)**

3, Twentieth Street, Hong Lok Yuen, Tai Po
Tel: 3955 3000
Email: info@ichkhy.edu.hk
Website: www.ichk.edu.hk
Year founded: 1984
Curriculum: IBPYP, English, IGCSE, IBDP

Invictus School Hong Kong

Tseung Kwan O Campus (Kindergarten & Primary)
 Monterey Place, 23 Tong Chun Street, Tseung Kwan O
Tel: 3643 1868

Email: admissions@invictus.edu.hk

Chai Wan Campus (Secondary)

188 Tai Tam Road, Chai Wan
Tel: 3852 7200
Email: admissions.chaiwan@invictus.edu.hk
Website: www.invictus.edu.hk

**Island Children's Montessori
Kindergarten**

Tin Hau Campus
 Units B & C, LG/F & UG/F,
 16 Tin Hau Temple Road, Tin Hau
Lei King Wan Campus
 Shop GC 19-21 Site C, Tai Hong Street, Lei King Wan
Tel: 3421 9100
Email: admissions@icms.edu.hk

**Island Montessori International
Kindergarten**

North Point Campus
 Commercial Unit, G/F, Bedford Gardens,
 151-173 Tin Hau Temple Road, North Point, HK
Tel: 3427 9100
Email: info@icms.edu.hk
Website: www.icms.edu.hk
Year founded: 2010
Curriculum: Montessori
Lei King Wan Campus
 Shop GC 19-21, G/F, Lei King Wan,
 Site C, 35 Tai Hong Street, Sai Wan Ho
Tel: 2562 8500
Website: http://icms.edu.hk
Year Founded: 2012

Island Waldorf School

Primary & middle school
 1/F 455 Queen's Road West, Sai Wan, Hong Kong
Kindergarten
 G/F 71-77 Smithfield, Kennedy Town, Hong Kong
Outdoor Activities Centre
 Ka Nam New Village, Lamma Island
Tel: 5114 1451
Email: info@iws.edu.hk
Website: www.iws.edu.hk

Italian International Kindergarten

Podium Level 1, Block 4, Phase 1,
 South Horizons, Ap Lei Chau, Hong Kong
Tel: 2662 3066
Email: info@iikg.edu.hk
Website: www.iikg.edu.hk
Year Founded: 2019

**Japanese International School
(International Section)**

4663 Tai Po Road, Tai Po
Tel: 2834 3531
Email: esinfo@jis.edu.hk
Website: es.jis.edu.hk
Year founded: 1997
Curriculum: IB Primary Years Programme

Kellett School

Kowloon Bay Preparatory and Senior Campus
 7 Lam Hing Street, Kowloon Bay
Po Fu Lam Preparatory Campus
 2 Wah Lok Path, Wah Fu, Pok Fu Lam, Hong Kong
Tel: 3120 0700
Email: admissions@kellettschool.com
Website: www.kellettschool.com
Year founded: 1976
Curriculum: English National Curriculum including
 IGCSE and A-level

Kendall International Preschool

G/F, Residence 228, 228 Fuk Wing Street,
 Cheung Sha Wan, West Kowloon, Hong Kong
Tel: 2328 8223
Email: info@kendallpreschool.edu.hk
Website: www.kendall.edu.hk/
Year Founded: 2017
Curriculum: Own

**Kiangsu & Chekiang Primary School &
Kiangsu-Chekiang College
(International Section)**

Lower School
 30 Ching Wah Street, North Point, Hong Kong
Tel: 2570 4594
Upper School
 20 Braemar Hill Road, North Point
Tel: 2570 1281
Email: inter@kcis.edu.hk (Primary)
Email: inter2@kcis.edu.hk (Secondary)
Website: www.kcis.edu.hk
Year founded: 1993
Curriculum: Early Years Foundation Stage (EYFS);
 British National Curriculum; IB Diploma

**Kingston International Kindergarten and
Children Centre**

G/F & 1/F, 12-14 Cumberland Road, Kowloon Tong
Tel: 2337 9049
Email: enquiry@kingston.edu.hk
Website: www.kingston.edu.hk
Curriculum: IB Primary Years Programme

Kingston International School

Lower Primary Campus
 113 Waterloo Road, Kowloon Tong, Kowloon
Tel: 2337 9031
Upper Primary Campus
 105 Waterloo Road, Kowloon Tong, Kowloon
Tel: 2337 9012
Email: enquiry@kingston.edu.hk
Website: www.kingston.edu.hk
Curriculum: IB Primary Years Programme

Kohitsuji Kindergarten

Shop 1, G/F, Site 10, Whampoa Garden, Hung Hom
Tel: 2330 6677
Website: www.kohitsujiyouchien.com
Year Founded: 2013

**Kornhill International Nursery
(Kornhill Anglo Chinese Kindergarten)**

G/F 16 Hong Shing Street, Kornhill, Quarry Bay, HK
Tel: 2884 4186
Email: admin@kornhill-edu.com
Website: www.kornhill-edu.com
Year Founded: 1986
Curriculum: Teaching Strategies. The Creative
 Curriculum for Preschool

Korean International School

55 Lei King Road, Sai Wan Ho, Hong Kong
Tel: 2569 5500
Email: admissions@kis.edu.hk
Website: www.kis.edu.hk
Curriculum: IPC, UK, IGCSE, A-Levels, Korean

**Kowloon Baptist Church Kindergarten**

G/F., 45-47 Grampian Road, Kowloon
Tel: 2336 6213
Email: admission@kbck.edu.hk
Website: www.kbck.edu.hk

**Kowloon Cannan Anglo-Chinese
Kindergarten**

G/F, 28B Grampian Road, Kowloon Tong
Tel: 2336 2096
Website: www.cannan.edu.hk
Year Founded: 1983

Lantau International School

Cheung Sha Campus
 No. 22, Upper Cheung Sha Village,
 Lantau Island, Hong Kong
Tel: 2984 0302

Tong Fuk Campus

House 113, Tong Fuk Village, Lantau, Hong Kong
Tel: 2980 3676

Pui O Campus

No. 17-19, Lo Wai Tsuen, Pui O,
 Lantau Island, Hong Kong
Tel: 2984 0302

Email: lisadmin@lis.edu.hk

Website: www.lis.edu.hk

Year founded: 1995

Curriculum: British Curriculum

Leapfrog Kindergarten and Playgroup

11 Pak Tam Chung Village,
 Sai Kung Country Park, Sai Kung
Tel: 2791 1540
Email: admim@leapfrogkindergarten.org
Website: www.leapfrogkindergarten.org
Year founded: 1992
Curriculum: EYFS

Learning Habitat Kindergarten

Hampton Loft Campus
 Shop 2, 5/F Hampton Loft, 11 Hoi Fan Road, Tai Kok
 Tsui
Tel: 2501 5105
Website: www.learninghabitat.org
Year Founded: 2005
Papillons LP Campus
 Shop 12, 15 & 16, G/F Papillons Square,
 21 Tong Chun Street, Tseung Kwan O
Tel: 2363 3005
Website: www.learninghabitat.org
Year Founded: 2010

**Les Petits Lascars – Maternelle Française
Hong Kong Kids Academy Int'l Preschool**

Central Campus
 2 & 3/F, Wellington Plaza,
 56-58 Wellington Street, Central
Tseung Kwan O Campus
 G01, Capri Place, 33 Tong Yin Street, Tseung Kwan O
Wong Chuk Hang Campus
 Units 306-307, 3/F, One Island South,
 2 Hung Yip Road, Wong Chuk Hang
Tel: 2526 8666
Email: admissions@petitslascars.com
Website: hkkidsacademy.edu.hk/les-petits-lascars
Year founded: 2006
Curriculum: French

Li Po Chun United World College

10 Lok Wo Sha Lane, Sai Sha Road, Shatin
Tel: 2640 0441
Email: office@lpcuwc.edu.hk
Website: www.lpcuwc.edu.hk
Year founded: 1992
Curriculum: IBDP

Little Lantau Montessori Kindergarten

Unit 12 & 13, G/F, Silverview Centre,
 8 Ngan Kwong Wan Road, Mui Wo, Lantau Island
Tel: 3689 7033

**Lou Pichoun French International
Preschool Hong Kong**

Tseung Kwan O Campus
 1A-2A, G/F, Alto Residences,
 29 Tong Yin Street, Tseung Kwan O
Tel: 2813 4277 / 6304 1021
Website: www.loupichoun.com
Lou Pichoun Stanley Campus
 1/F, 5 Stanley New Street, Stanley, Hong Kong
Tel: 2813 2456
Happy Valley Campus
 G/F Door C, 22 Fung Fai Terrace, Hong Kong
Tel: 2813 2456
Email: info@loupichoun.com
Website: www.loupichoun.com
Year founded: 1997
Curriculum: French, Own

Ludus Kindergarten

2/F, Le Billionnaire,
 46 Sa Po Road, Kowloon City
Tel: 2382 0061
Website: www.ludus.edu.hk
Year Founded: 2015

MAGART International Kindergarten

Whampoa Campus
 Shop G3A, Site 7, Whampoa Garden,
 9 Tak On Street, Hong Kong
Tel: 2786 9314 / 2788 0788
WhatsApp: 9879 1509
Email: info.wp@magartedu.com
Kornhill Campus
 16 Hong Shing St, Kornhill, Quarry Bay, Hong Kong
Tel: 2786 9152 / 2786 9189
WhatsApp: 6717 3175
Email: info.tk@magartedu.com
Fanling Campus
 G/F, Phase 1, Fanling Centre,
 New Territories, Hong Kong
Tel: 2677 8109
WhatsApp: 9445 8322
Email: info.fl@magartedu.com
Year Founded: 2018
Curriculum: Enhanced EYFS, Reggio Emilia
 and inquiry approach



Malvern College Hong Kong

3 Fo Chun Road, Pak Shek Kok, New Territories
Tel: 3898 4688
Email: admissions@malverncollege.org.hk
Website: www.malverncollege.org.hk
Year founded: 2018
Curriculum: IB

Malvern College Pre-School Hong Kong Island West

G/F & 1/F Viking Court,
 165-166 Connaught Road West,
 Sai Ying Pun, Hong Kong
Tel: 3898 4670
E-mail: iw-office@malvernpreschool.hk
Coronation Circle
 Units 9-12, Coronation Circle,
 1 Yau Cheung Road, Southwest Kowloon
Tel: 3898 4660
E-mail: office@malvernpreschool.hk
Website: www.malvernpreschool.hk

Maple Bear Canadian International Kindergarten Hong Kong

Shop 7, G/F, Alto Residences,
 29 Tong Yin Street, Tseung Kwan O
Tel: 2813 4887 / 6848 1264
Email: admissions@maplebear.hk
Website: www.maplebear.hk

MASS International Preschool

Shop 2, G/F & LG/F, Lai Tak Plaza,
 Tai Hang, Hong Kong
Tel: 3955 1588
Email: info@masspreschool.edu.hk
Website: www.masspreschool.com
Year founded: 2012
Curriculum: Other

Mighty Oaks Nursery & Kindergarten

1/F, Lungga Mansion, 46A Belcher's Street,
 Kennedy Town, Hong Kong
Tel: 2806 8383
Email: info@mightyoaks.edu.hk
Website: www.mightyoaks.edu.hk
Year founded: 2015
Curriculum: Early Years Foundation Stage

Ming Wai International Kindergarten

Flat A & B, G/F & 1/F, Alice Court,
 10-12 Tsat Tsz Mui Road, North Point
Tel: 2561 5008
Website: www.mingwai.edu.hk
Year Founded: 1982
North Point Branch
 Shop 1 G/F & 1/F, Fairview Court,
 5-13 Tsat Tsz Mui Road, North Point
Prince Edward Branch
 Shop 6 of G/F & Flat 1-5 of 1/F,
 Kenwood Mansion, 15 Playing Field Road,
 Prince Edward
Tel: 2522 2688

Mills International Preschool

The Spectacle, 8 Cho Yuen Street,
 Yau Tong, Kowloon, Hong Kong
Tel: 2717 6336
Email: preschool@millsinternational.edu.hk
Website: www.millsinternational.edu.hk
Year founded: 2013
Curriculum: Early Years Foundation Stage

Montessori for Children

House A, Phoenix Garden,
 RBL 1033 Tai Tam Village, Stanley, Hong Kong
Tel: 2813 9589
Email: hongkong@montessori.edu.sg
Website: www.montessori.edu.sg
Year founded: 1986
Curriculum: Montessori

Mori Lisa International Kindergarten

Level 5 Flat Roof, Block 7,
 Greenwood Terrace, Chai Wan
Tel: 3176 1236
Email: info@morilisa.hk
Website: www.morilisa.hk
Year founded: 2014
Curriculum: Early Years Foundation Stage

Morningstar Preschool and Kindergarten

Block 2, G/F, Chi Fu Fa Yuen, Pok Fu Lam
Tel: 6993 7157
Email: hello@morningstarschools.com
Website: www.morningstarpreschool.com.hk
Year founded: 2011
Curriculum: International

Mui Wo OWLS School & Kindergarten

1/F, Unit A, Silver Centre Building,
 Mui Wo Ferry Pier Road, Mui Wo, Lantau
Tel: 2984 0006
Email: office@muiwoowlschool.edu.hk
Website: www.muiwoowlschool.edu.hk
Year founded: 2010
Curriculum: English

Mulberry House International Kindergarten

Southside Campus
 Shops 1 & 2, G/F, Ocean Court,
 3 Aberdeen Praya Road, Aberdeen , HK
Tel: 5598 0555
Tai Po Campus
 LG/F Kindergarten, Mayfair By The Sea I,
 23 Fo Chun Road, Tai Po, HK
Tel: 5598 0909
Website: https://mulberryhousekg.com/

**Munsang College Kindergarten**

G/F-1/F, Block A & G/F-2/F, Block F,
 8 Dumbarten Road, Kowloon City
Tel: 3655 3500
Website: www.munsang.edu.hk
Year Founded: 1926

Mynors International Kindergarten

Portion A, Commercial Unit, Shop 1-11,
 1/F Belair Monte Shopping Centre,
 3 Ma Sik Road, Fanling
Tel: 2355 7500
Website: www.mynors.hk

Nord Anglia International School Hong Kong

Early Years Campus
 285 Hong Kin Road, Tui Min Hoi, Sai Kung, New Territories
Primary Campus
 11 On Tin Street, Lam Tin, Kowloon
Secondary Campus
 19 Yuet Wah Street, Kwun Tong, Kowloon
Tel: 3958 1428
Email: admissions@nais.hk
Website: www.nais.hk
Year founded: 2014
Curriculum: English, IGCSE, IBDP

**Norwegian International School Kindergarten Campus**

175 Kwong Fuk Road, Tai Po
Tel: 2638 0269
Email: kinder@nis.edu.hk
Primary School Campus
 170 Kam Shan Road, Kam Shan Village, Tai Po
Tel: 2658 0341
Email: office@nis.edu.hk
Website: nis.edu.hk
Year founded: 1984
Curriculum: IPC, UK Literacy Curriculum, Australian Mathematics Curriculum

Oisca Japanese Kindergarten

G/F Ming Yuen Mansion, 26-48 Peacock Road, North Point
Tel: 2775 5899
Website: www.oisca-youchien.ne
Year Founded: 1986

Oxbridge School

G/F B & 1/F, Star Ruby, 1 San Wai Street,
 Hung Hom, Kowloon
Tel: 2612 1888
Email: admissions@oxbridgeschool.hk
Website: www.oxbridgeschool.hk

**Parkview International Pre-School**

Podium Level, Kowloon Station,
 1 Austin Road West, Kowloon
Tel: 2812 6801
Email: pipsinfo-kl@pips.edu.hk
Website: www.pips.edu.hk
Year founded: 2007
Curriculum: International Baccalaureate (IB)

Parkview Rhine Garden Pre-school

Tower 1, 1st Floor, Rhine Garden,
 38 Castle Peak Road, Sham Tseng, N.T.
Tel: 2491 1082
Email: school@pipsrg.edu.hk
Year founded: 1994

Parkview-Rhine Garden International Nursery

Tower 5, 1Podium Level 2, Rhine Garden,
 38 Castle Peak Road, Sham Tseng, N.T.
Tel: 2496 2080
Email: school@pipsrg.edu.hk
Website: pipsrg.edu.hk
Year founded: 1994

Po Leung Kuk Choi Kai Yau School

6 Caldecott Road, Piper's Hill, Kowloon
Tel: 2148 2052
Email: info@cky.edu.hk
Website: www.cky.edu.hk
Year founded: 2002
Curriculum: Own, IGCSE, IBDP

Pods Kindergrten & Preschool Tin Hau Campus

11 Tin Hau Temple Road, Tin Hau, Hong Kong
Tel: 3460 3560
Harbour Heights Campus
 G01B & 1/F, Harbour Heights,
 1 Fook Yum Road, North Point, Hong Kong
Tel: 2242 2261
Email: info@pods.com.hk
Website: www.pods.com.hk
Year founded: 2013
Curriculum: Own

Renaissance College ESF

5 Hang Ming Street, Ma On Shan
Tel: 3556 3556
Email: admissions@rchk.edu.hk
Website: www.rchk.edu.hk
Year founded: 2006
School Type: Private
Curriculum: IB Primary Years Programme, IB Middle Years Programme, IB Diploma, IB Career-related Programme

Rightmind International Nursery & Kindergarten

Shum Wan Campus
 G/F, Broadview Court, No. 11 Shum Wan Road, Hong Kong
Tel: 2795 1018
South Horizons Campus
 UG/F, Tower 26-28, South Horizons, Phase 4, Ap Lei Chau
Tel: 2875 0452
Email: parentservice@kinderu.org
Website: www.rmkg.org
Year founded: 1980
Curriculum: Other

Rosebud Primary School

UG 28-37 Waterside Plaza, 38 Wing Shun Street, Tsuen Wan
Tel: 2406 7300
Email: info@rosebud.edu.hk
Website: www.rosebud.edu.hk
Year Founded: 2004
Curriculum: IPC

Safari Kid International Kindergarten Happy Valley Campus

16 Min Fat Street, Happy Valley, Hong Kong
Tel: 2177 0001
Email: happyvalley@safarikidasia.com
Pok Fu Lam Campus
 L101 Chi Fu Landmark, Chi Fu Fa Yuen, Pok Fu Lam
Tel: 2177 0001
Email: infohk@safarikidasia.com
Website: www.safarikidasia.com
Year founded: 2005
Curriculum: Other

Sai Kung International Pre-school

159 Che Keng Tuk Road, Sai Kung
Tel: 2791 7354
Email: skip@skip.edu.hk
Website: skip.edu.hk
Year founded: 1989
Curriculum: Early Years Foundation Stage

Sai Kung Montessori

Unit SB, 787 Tan Cheung, Po Tung Road, Sai Kung
Tel: 5369 8587
Email: info@saikungmontessori.com
Website: www.saikungmontessori.com
Year Founded: 2017
Curriculum: Montessori

Saint Bright International Kindergarten

G/F & 1/F, Cameron Mansion,
 29-31 Lion Rock Road, Kowloon City
Tel: 2337 5255
Website: www.stbrigt.edu.hk
Year Founded: 2014

Sear Rogers International School Tseun Wan Campus

Portion A, Podium E, 4/F, Riviera Gardens, Tsuen Wan
Tel: 2547 5479
Email: enquiry@sris.edu.hk
Website: www.sris.edu.hk
Year founded: 1982
Curriculum: English, IGCSE, A-Levels

SDM-Chatsworth International Kindergarten & Nursery

166 Boundary Street, Kowloon Tong
Tel: 2560 3322
Email: info@sdm-chatsworth.hk
Website: www.sdm-chatsworth.hk
Year Founded: 2017
Curriculum: Singapore-based curriculum

Shrewsbury International School Hong Kong

10 Shek Kok Road, Tseung Kwan O
Tel: 2480 1500
Email: admissions@shrewsbury.edu.hk
Website: www.shrewsbury.edu.hk
Year founded: 2018
Curriculum: English National Curriculum

**Singapore International School Preparatory Years and Primary Section**

23 Nam Long Shan Road, Aberdeen
Tel: 2872 0266
Email: general@singapore.edu.hk
Secondary Section
 2 Police School Road, Wong Chuk Hang, Hong Kong
Tel: 2919 6966
Email: secondary@singapore.edu.hk
Website: www.singapore.edu.hk
Year founded: 1991
Curriculum: Singapore curriculum, IGCSE, IBDP

Small World Christian Kindergarten

10 Borrett Road, Mid-Levels
Tel: 2525 0922
Email: office@smallworld.edu.hk
Website: smallworld.edu.hk
Year founded: 1986
Curriculum: International

**Spanish Primary School**

130 Shuen Wan Chan Uk Tai Po, N.T., Hong Kong
Tel: 3955 1588
Email: info@spis.com.hk
Website: www.spis.com.hk

St. Catherine's International Kindergarten Campus 1

1 Essex Crescent, Kowloon Tong
Tel: 2337 7273
Website: www.stcatherines.edu.hk
Year Founded: 1970
Campus 2
 4 & 6 Norfolk Road, Kowloon Tong
Tel: 2337 7344 / 2337 7680
Website: www.stcatherines.edu.hk
Year Founded: 1970

St. Catherine's Kindergarten (Harbour Place)

1/F Harbour Place, 8 Oi King Street, Hung Hom
Tel: 2670 6600
Website: www.stcatherines.edu.hk
Year Founded: 2011

St. Paul's Covent School (Secondary Section)

140 Leighton Road, Causeway Bay, Hong Kong
Tel: 2576 0601
Website: www.spcs.edu.hk
Year founded: 1854
Curriculum: HKDSE, IGCSE, A-Levels

St. Stephen's College

22 Tung Tau Wan Road, Stanley, Hong Kong
Tel: 2813 0360
Email: sschk@ssc.edu.hk
Website: www.ssc.edu.hk
Year founded: 1903
Curriculum: IBDP, HKDSE

Stamford American School Hong Kong

25 Man Fuk Road, Ho Man Tin
Tel: 2500 8688
Email: admissions@sais.edu.hk
Website: www.sais.edu.hk
Year founded: 2017
Curriculum: Inquiry-based American
Curriculum with AERO and Common Core Plus Standards

Sunshine House International Pre-school

Chi Fu Campus
 G/F, Block 1, Fu Lai Yuen, Chi Fu Fa Yuen,
 1 Chi Fu Road, Pok Fu Lam
Tel: 2551 3781
Email: chifu@sunshinehouse.com.hk
Clearwater Bay Campus
 Level 7, Silverstrand Mart,
 No. 2 Silver Cape Road, Clearwater Bay, Sai Kung
Tel: 2358 3803
Email: clearwaterbay@sunshinehouse.com.hk
Discovery Bay Campus
 Shop 106, 1/F, Blk 6, Discovery Bay North Development,
 Discovery Bay, Lantau Island
Tel: 2259 4066
Email: dbay@sunshinehouse.com.hk
Pok Fu Lam Campus
 Commercial Development Block A, Pok Fu Lam
 Gardens
Tel: 2551 3213
Email: pokfulam@sunshinehouse.com.hk
Tung Chung Campus
 No. 2 Mei Tung Street,
 Tung Chung Crescent, Lantau Island
Tel: 2109 3873
Email: tungchung@sunshinehouse.com.hk
Website: www.sunshinehouse.com.hk
Year founded: 1990
Curriculum: Other

The Harbour School

The Grove (Primary Campus)
 332 Ap Lei Chau Bridge Road, Ap Lei Chau
The Garden (Secondary Campus)
 138 Lee Chi Road, Ap Lei Chau
Tel: 3612 1090
Email: admissions@ths.edu.hk
Website: www.ths.edu.hk
Year founded: 2007
Curriculum: American

**The International Montessori School of Hong Kong**

Aldrich Bay Campus
 G/F, i-UniQ Grand, 155 Shau Kei Wan Road,
 Shau Kei Wan, Hong Kong
Tel: 2156 9033
Email: admin.ab@ims.edu.hk
Mid-Level Campus
 Mezzanine Entrance, Tung Fai Gardens,
 17 Po Yan Street, Sheung Wan, Hong Kong
Tel: 2857 7007
Email: admin.ml@ims.edu.hk
South Horizons Campus
 G/F, Blocks 23 to 23A, South Horizons,
 Phase III, Ap Lei Chau, Hong Kong
Tel: 2861 0339
Email: admin.sh@ims.edu.hk
Stanley Campus
 Phase III, Ma Hang Estate,
 Stanley (off Stanley Plaza), Hong Kong
Tel: 2566 7196
Email: admin.st@ims.edu.hk
Website: www.ims.edu.hk
Year founded: 2002
Curriculum: Montessori

The ISF Academy

1 Kong Sin Wan Road, Pokfulam, Hong Kong
Tel: 2202 2028
Email: admissions@isf.edu.hk
Website: academy.isf.edu.hk
Year founded: 2003
Curriculum: Own, IBMYP, IBDP

**The ISF Pre-School**

Shop G01, G/F, 97 Belcher's Street,
 Kennedy Town, Hong Kong
Tel: 2559 8518
Email: psenquiry@isf.edu.hk
Website: preschool.isf.edu.hk
Year founded: 2015
Curriculum: Other

The Woodland Montessori Academy (Caine Road)

G/F -3/F, On Fung Building,
 110-118 Caine Road, Mid-Levels
Tel: 2549 1211
Email: montessoricr@woodlandschools.com

The Woodland Pre-School

Repulse Bay Montessori Campus
 Shop G118-G119, G/F,
 The Repulse Bay, 109 Repulse Bay Road
Tel: 2803 1885
Email: montessorirb@woodlandschools.com
Beachside (Repulse Bay) Campus
 35 Beach Road, Repulse Bay
Tel: 2812 0274
Email: beachside@woodlandschools.com
Pokfulam Campus
 Shop 29, G/F, Commercial Complex,
 Wah Fu Estate II, Pokfulam
Tel: 2551 7177
Email: pokfulam@woodlandschools.com
Happy Valley Campus
 G/F, 2 Hawthorn Road, Happy Valley
Tel: 2575 0042
Email: happyvalley@woodlandschools.com
Sai Kung Campus
 Shop D, G/F, Marina Cove Shopping Centre,
 Sai Kung, New Territories
Tel: 2813 0290
Email: saikung@woodlandschools.com
Website: www.woodlandschools.com
Year Founded: 1978
Curriculum: Early Years Foundation Stage of the
 British National Curriculum and Montessori learning
 approaches

Think International Academy

11 Kwong Lee Road, Cheung Sha Wan
Tel: 2157 2111
Email: think_ta@think.edu.hk
Website: www.think.edu.hk
Year founded: 2016
Curriculum: IBPYP, Cambridge CIE Secondary 1 & 2,
 IBDP

Think International School

117 Boundary Street, Kowloon Tong, Kowloon
Tel: 2338 3949
Email: think_tis@think.edu.hk

Think International Kindergarten

Kowloon Tong Campus
 5 Lincoln Road, Kowloon Tong
Tel: 2338 0211
Email: thinkkg_kt@think.edu.hk
Laguna Campus
 99 Cha Kwo Ling Road G/F, Kowloon
Tel: 2727 4747
Email: thinkkg_lc@think.edu.hk
Ma On Shan Campus
 Level 2, Sunshine Bazaar,
 628 Sai Sha Road, Ma On Shan, New Territories
Tel: 2633 7800
Email: thinkkg_mos@think.edu.hk
Mei Foo Campus
 The Podium, Nob Hill, 8 King Lai Path, Mei Foo,
 Kowloon
Tel: 2727 7585
Email: thinkkg_mf@think.edu.hk
Website: www.think.edu.hk
Year founded: 2003
Curriculum: Other

Topkids International Kindergarten (Yuen Long)

G/F (part of) & 1/F, Shing Fat Building,
 14 Yuen Long Tai Cheung Street, Yuen Long
Tel: 2447 2669
Website: www.topkids.edu.hk

Tsim Sha Tsui Funful International Kindergarten

No. 136 Nathan Road, Tsim Sha Tsui, Kowloon
Tel: 2311 3883 / 2311 4707
Website: www.funful.hk
Year founded: 1969
Curriculum: Local, International

Tutor Time International Nursery & Kindergarten

Kowloon Tong – Dorset Crescent
 No. 1 Dorset Crescent, Kowloon Tong
Tel: 2573 9188

Kowloon Tong – Suffolk Road

No. 9 Suffolk Road, Kowloon Tong
Tel: 2529 1188

Mid Level – Caine Road

Shop A-B, G/F, Botanical Court,
 5 Caine Road, Mid-Levels, Hong Kong
Tel: 2529 2288

North Point - Braemar Hill

LG/F & G/F Braemar Hill Shopping Center,
 45 Braemar Hill Road, Hong Kong
Tel: 3529 1833

Yuen Long – Yoho

Shop G011, Ground Level and Mezzanine Level,
 Yoho Mall 1, No. 9 Yuen Lung Street,
 Yuen Long, N.T.

Tel: 2392 8188

Email: info@tutortime.com.hk

Website: www.tutortime.com.hk

Year founded: 2001

Umah International Primary School

Fung Chi Tsuen, Wang Chau, Yuen Long, N.T.
Tel: 2618 3172 / 2450 5401
Email: umahdin@umahhk.com
Website: umahhk.com
Year founded: 1996
Curriculum: Own

Victoria Shanghai Academy

19 Shum Wan Road, Aberdeen
Tel: 3402 1000
Email: enquiries@vsa.edu.hk
Website: www.vsa.edu.hk
Year founded: 2004
Curriculum: IBPYP, IBMYP, IBDP

Victoria Education Organisation

Belcher Campus
Podium of Level 3 (Kindergarten Area),
The Westwood, 8 Belcher's Street, Hong Kong
Tel: 2542 7001

Email: bgvkoffc@victoria.edu.hk

Causeway Bay Campus

32 Hing Fat Street, Causeway Bay, Hong Kong
Tel: 2578 9998

Website: www.cbvictoria.edu.hk

Harbour Green Campus

G/F, Harbour Green, 8 Sham Mong Road, Kowloon
Tel: 2885 1928

Email: hgvk@victoria.edu.hk

Harbour Heights Campus

Ko Fung Court, Harbour Heights,
5 Fook Yum Road, North Point, Hong Kong
Tel: 2571 7888

Email: hhvnoff2@victoria.edu.hk

Homantin Campus

1/F, Carmel-on-the-Hill, 9 Carmel Village Street,
Homatin, Kowloon
Tel: 2762 9130

Email: hmtoffc@victoria.edu.hk

Lower Kornhill Campus

2-8 Hong On Street, Kornhill, Hong Kong
Tel: 2885 3331

Email: lkvkoffc@victoria.edu.hk

Middle Kornhill Campus

2/F, No. 18 Hong On Street, Kornhill, Hong Kong
Tel: 2885 1888

Email: mkvkoffc@victoria.edu.hk

South Horizons Campus

Phase II, Podium Level,
South Horizons, Hong Kong
Tel: 2580 8633

Email: shvkoffc@victoria.edu.hk

Upper Kornhill Campus

G/F, 14 Hong Yue Street, Kornhill, Hong Kong
Tel: 2513 1208

Email: ukoffc@victoria.edu.hk

Website: www.victoria.edu.hk

Year founded: 1965

Curriculum: IBPYP, TCRWP

Wellborn International Pre-school

G/F, Nursery Block,
Chevalier Garden, Ma On Shan
Tel: 2642 6033
Website: www.wellborn.edu.hk

Wilderness International Kindergarten

Ground Floor, Po Tak Mansion,
85 Smithfield Rd, Kennedy Town, Hong Kong
Tel: 2595 9066
Email: admissions@wilderness.asia
Website: www.wilderness.asia
Year founded: 2016

Wycombe Abbey School Hong Kong

17 Tin Wan Street, Aberdeen, Hong Kong
Tel: 2129 7128

Email: admissions@was.edu.hk

Website: www.was.edu.hk

Year Founded: 2019

Curriculum: National Curriculum for England



Yew Chung International School (YCIS)

Secondary Section

3 To Fuk Road, Kowloon Tong

Primary Section (3 campuses)

- 2 Kent Road, Kowloon Tong
- 11 Kent Road, Kowloon Tong
- 22 Somerset Road, Kowloon Tong

Early Childhood Education (5 campuses)

- 29 Kent Road, Kowloon Tong
 - 151 Waterloo Road, Kowloon Tong
 - 3 Somerset Road, Kowloon Tong
 - 20 Somerset Road, Kowloon Tong
 - Savannah Place, 3 Chi Shin Street, Tseung Kwan O
- Tel:** 2338 7106

Email: admissions@ycef.com

Website: www.ycis-hk.com

Year founded: 1932

Curriculum: International curriculum, IGCSE,
IB Diploma Programme

YMCA Christian Academy

70 Bridges Street, Sheung Wan, Hong Kong
Tel: 2537 2552

Email: admission@yca.edu.hk

Website: www.ymca.org.hk

YMCA of Hong Kong Christian College

12 Chung Yat Street, Tung Chung, Lantau
Tel: 2988 8123
Email: info@ymcacc.edu.hk
Website: www.ymcacc.edu.hk
Year founded: 2003
Curriculum: HKDSE, IGCSE, A-Levels

YMCA of Hong Kong International Kindergarten

2/F, 41 Salisbury Road, Tsim Sha Tsui, Kowloon
Tel: 2268 7766
Email: kindergarten@ymcahk.org.hk
Website: www.ymcaikg.edu.hk
Year founded: 2003
Curriculum: EYFS, Own

York International Pre-School (Hong Kong)

1/F & 2/F, Tsui King Court,
18 Water Street, Sai Ying Pun
Tel: 2368 7038
Website: www.york.edu.hk

York International Kindergarten

51 Cumberland Road, Kowloon Tong
Tel: 2336 1483
Website: www.york.edu.hk
Year Founded: 1979

York International Pre-School

G/F & 1/F, 14 Stafford Road, Kowloon Tong
Tel: 2339 0728
Website: www.york.edu.hk
Year Founded: 2012

York Montessori International Pre-School (Yuen Long)

G/F, Commercial Accommodation,
No. 18 Castle Peak Road Tam Mei,
Kam Tin, Yuen Long
Tel: 3485 9268
Website: www.york.edu.hk

Zebedee International Kindergarten & Nursery

G/F Yat Wing House,
Yat Nga Court, Nam Wan Road, Tai Po
Tel: 2650 3339
Email: admin@zebedee.edu.hk
Website: www.zebedee.edu.hk
Year founded: 2008
Curriculum: Early Years Foundation Stage

Zenith Kindergarten (Kowloon Tong)

G/F & 1/F, No. 6 Kent Road, Kowloon Tong
Tel: 2337 3818
Website: www.zenith.edu.hk
Year Founded: 2010

Ace Academy

1305 Universal Trade Center, 3 Arbutnot Road,
Central
Tel: 2523 5533
Email: info@AceAcademy.com
Website: www.AceAcademy.com

Aegis Advisors

16/F Vulcan House, 21-23 Leighton Road, Causeway
Bay
Tel: 8175 5687
Email: inquiries@aegis-advisors.com
Website: aegis-advisors.com

Camp Asia

25 Man Fuk Road, Ho Man Tin
Tel: 3467 4567
Email: info@campasia.hk

Capstone Prep Education Center

Primary Section
5-6/F, 111 Leighton Road, Causeway Bay, Hong Kong
Tel: 2893 6067

Secondary Section

2/F, One Hysan Avenue, Causeway Bay, Hong Kong
Tel: 2893 6060
Email: info@capstoneprep.com
Website: www.capstoneprep.com
Year founded: 2003

Centre of Learning and Life Enhancement Hong Kong Y.W.C.A.

3/F No 1 MacDonnell Road, Central
Tel: 3476 1345
Website: http://cle.ywca.org.hk/
Facebook: https://www.facebook.com/YWCA.
CLLE

Clarity Myopia Control Centre

1303-05, 13/F, 9 Queen's Road Central, Hong Kong
Tel: 3111 1120 / 3188 9853
Whatsapp: 6883 1018
Website: https://eyesurgery.claritymedic.com/
myopia-control/
Facebook: @clarity_cmc
Instagram: @clarity_cmc



De la mano Spanish

Tel: 9317 7006
Email: info@delamanospanish.com
Website: www.delamanospanish.com

Eye Level Hong Kong

Unit 601, Island Place Tower,
510 Kind's Road, North Point
Tel: 2104 0188
Email: hongkong@myeyelevel.com
Website: www.myeyelevel.com

First Code Academy

5/F, Gee Tuck Building,
16-20 Bonham Strand, Sheung Wan
(Opening June 25, 2018)
Tel: 2772 2108
Email: hello@firstcodeacademy.com
Website: www.firstcodeacademy.com
Year Founded: 2013
Year groups: Tinker: Age 6-8; Explorer: Age 9-11;
Creator: Age 12-14; **App Entrepreneur:** 15+

Foundation Global Education

13/F, Chinachem Hollywood Centre,
1 Hollywood Road, Central, Hong Kong
Tel: 3107 8810
Email: info@foundationge.com
Website: www.foundationge.com

Genius Development Workshop and Scientistech Future

Shop 401, 404, 406 & 412, Level 4, The Arcade,
100 Cyberport Road, Hong Kong
Tel: 2338 9877
WhatsApp: 6351 8779
Repulse Bay Campus 1
Shop Nos. 206 and 207B, Level 2,
No. 28 Beach Road, Repulse Bay, Hong Kong
Tel: 22338 3770
WhatsApp: 9703 0731
Repulse Bay Campus 2
Shop G205, The Arcade
No. 109 Repulse Bay Road,
Hong Kong
Tel: 2338 3770
WhatsApp: 9703 0371

Kowloon Tong Campus

No. 10 Somerset Road,
Kowloon Tong, Hong Kong
Tel: 2180 9249

WhatsApp: 539 54669

Redhill Campus

Shop G22, G/F, Redhill Plaza, No.3 Redhill Road,
Tai Tam, Hong Kong
Tel: 3169 0136

WhatsApp: 6972 8275

The Peak Campus

Shop 2, G/F, 2-4 Watford Road, The Peak, Hong Kong
Tel: 2180 9249

WhatsApp: 6979 8858

Braemar Hill Campus

Shop no.15, Ground Floor, Braemar Hill Shopping
Center,
No.45 Braemar Hill Road, Hong Kong
Tel: 2338 3126

WhatsApp: 9703 9653

Hung Hom Campus

Unit 3H, Kaiser Estate Phase 2, 47-53 Man Yue Street,
Hung Hom, Kowloon, Hong Kong.
Tel: 2180 9248

WhatsApp: 5395 4669

Email: info@streams.hk

Websites:

https://www.geniusdevelop.com/

https://www.scientechfuture.com/

Goethe-Institut Hong Kong

14/F HK Arts Centre, 2 Harbour Road,
Wanchai, Hong Kong
Tel: 2802 0088

Email: info@hongkong.goethe.org

Website: goethe.de

Hong Kong Golf & Tennis Academy

81 Tai Chung Hau, Sai Kung
Tel: 3187 8900

Email: enquiry@hkgtta.com

Website: www.hkgtta.com/

**K-Academy Learning Centre
Aberdeen Centre**

Shop 3A, 1/F, Site 1, Aberdeen Centre
Aberdeen

Tel: 2355 7575

Tseung Kwan O

Shop 108A, 1/F Savannah Place
3 Chin Shin Street, Tseung Kwan O
Tel: 2116 0146

**Koding Kingdom
Whampoa Centre**

Room 11, 6/F, Harbourfront Landmark,
11 Wan Hoi St., Hung Hom

Kennedy Town Centre

4/F, Cheung Hing Industrial Building,
12P Smithfield, Kennedy Town

Taikoo Centre

13/F Zung Fu Industrial Building,
No.1067 King's Road, Hong Kong
Tel: 9224 6986

WhatsApp: 924 6986

Website: www.kodingkingdom.com

Email: info@kodingkingdom.com

KUMON Education Centre

Room 3406-3408, 34/F, Chubb Tower, Windor House,
311 Gloucester Road, Hong Kong

Tel: 2890 6533

Email: info@kumon.com.hk

**Le Club des cinq French
Learning Centre**

2F King Dao Building,
14 Burrows Street, Wanchai

Tel: 2575 4555 / 9773 7941

Email: contact@clubdes5.hk

Lee Educational Consulting

Unit 705, 7th Floor, Star House,
No. 3 Salisbury Road, Tsim Sha Tsui

Mobile: 9416 0798

Wechat: ljasonkh

Website: www.leeeducation.com

Mathconcept Learning Center

Park Central Shopping Arcade,
Tseung Kwan O

Tel: 2796 3399

WhatsApp: 2788 1188

Website: www.mathconcept.com

**Mini Mandarins Learning Centre
Causeway Bay Centre**

7/F, Capital Commercial Building,
26 Leighton Road, Causeway Bay

Tel: 2320 1128

Email: info@minimandarins.com

Central Centre

Room 1703 17/F Universal Trade Centre,
No. 3-5A Arbutnot Road, Hong Kong

Tel: 2320 5208

Email: central@minimandarins.com

Website: www.minimandarins.com

Year founded: 2014

**Monkey Tree English Learning Center
(Head Office)**

Room 2801, 28/F Citicorp Centre,
18 Whitfield Road, Hong Kong

Tel: 3563 6771

Email: enquiry@monkeytree.com.hk

Website: www.monkeytree.com.hk

Novalearn

Unit 3, 16/F, W50,

50 Wong Chuk Hang Road, Wong Chuk Hang

Tel: 2268 0084

Email: hello@novalearn.org

Website: www.novalearn.org

**NTK Academic Group****Main Campus**

3-5/F & 7/F (Front office),

Lee Garden Five, 18 Hysan Avenue, Causeway Bay

Tel: 2577 7844

Email: enquiry@ntk.edu.hk

Kowloon Campus

2/F, the Avery, 16 Hau Wong Road, Kowloon City

Tel: 2718 3000

Email: enquiry@ntk.edu.hk

Website: www.ntk.edu.hk

Year founded: 1996

Curriculum: SAT, AP, TOEFL, IB, IELTS

Spanish World Leading Language Group

701, 7/F Lap Fei Building,
6-8 Pottinger Street, Central, Hong Kong

Tel: 2526 9927

Email: hk@spanishworldgroup.com

Website: www.spanishworld.hk

**The Edge Learning Center
Causeway Bay**

2F, Zoroastrian Building,
101 Leighton Road, Causeway Bay

Tel: 2972 2555

Mong Kok

Unit A, 2/F, Silvercorp International Tower

707-713 Nathan Road, Mong Kok

Tel: 2783 7100

Email: info@theedge.com.hk

Website: www.theedge.com.hk

**The Genius Workshop
Happy Valley Center**

Unit B, 1/F, Southern Pearl Court,
151 Wong Nai Chung Road,

Happy Valley, Hong Kong

Tel: 2591 0100

Whatsapp: 6211 1968

Taikoo Center

Unit 1001, Podium, Hang Sing Mansion,
3 Tai Wing Avenue,

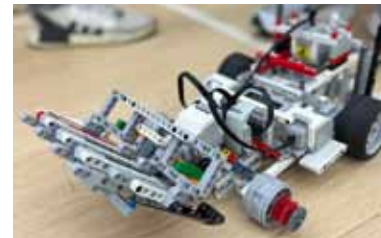
Quarry Bay, Hong Kong

Tel: 2591 0009

Whatsapp: 6211 1968

Email: info@g-workshop.com

Website: http://www.g-workshop.com/

**YLPSK & GAPSK**

Room 1803, 18/F, Hollywood Plaza,

No. 610 Nathan Road, MongKok, Kowloon, Hong Kong

Tel: 3101 0800

Email: info@ylpsk.org

Email: info@gapksk.org

Website: www.ylpsk.org

Website: www.gapksk.org

PIONEERS OF THE
STORYTELLING IMAGE

venture
studios

CREATING MEMORIES



CALL NOW!
2885 6262

LONDON • HONG KONG • NEW YORK



Find us on:
facebook



Venture Studios Hong Kong



Venturephotography.com/hk



venturestudioshk



+852 5304 7363



WYCOMBE ABBEY SCHOOL
HONG KONG



Every Child Can Excel

Your Gateway to UK Senior Schools

- UK National and ISEB Common Entrance Curriculum
- Strong focus on Chinese with 7 lessons per week
- Award winning Extra Curricular Programme
- Bespoke Secondary School Guidance Programme

Book Your Private School Tour

✉ admissions@was.edu.hk

☎ (852) 2129 7128

🌐 www.was.edu.hk



Book a Tour



Chat With Us

We are a Microsoft Showcase School

