

The Tilda logo is a red ribbon banner with a white dashed border, containing the word "Tilda" in a white, rounded, sans-serif font with a registered trademark symbol.A teal rectangular box with rounded corners containing the text "LAZY DAYS" and "CAT & BIRD PILLOW" in a white, elegant serif font. A small leaf icon is positioned above the letter 'Y' in "LAZY".

LAZY DAYS
CAT & BIRD PILLOW



Cat and Bird Pillow

This lovely pillow is the perfect partner to the Cat and Bird Quilt and features two of the cat blocks from the quilt. It uses some of the same fabrics as the quilt, so refer to the fabric swatches in **Fig A** of the quilt instructions. The fabric quantities are much smaller for the pillow. A fat eighth is assumed to be approx. 10½in x 18in (26.7cm x 45.7cm).

Materials

- Fabric 1: fat eighth – Pen Stripe light blue (130032)
- Fabric 2: fat eighth – Frances pink (100165)
- Fabric 3: 6½in x 12¾in (16.5cm x 32.4cm) – Phoebe ginger (100162)
- Fabric 4: 8in (20.3cm) square – Trickles coral (130049)
- Fabric 5: 8in (20.3cm) square – Medium Dots salmon (130028)
- Fabric 6: 2in x 17in (5.1cm x 43.2cm) – Paint Dots light blue (130035)
- Fabric 8: 22¾in x 2in (57.8cm x 5.1cm) – Dottie Dots light blue (130044)
- Fabric 10: 5in x 9¾in (12.7cm x 24.8cm) – Mildred lilac (100170)
- Fabric 17: 1½in x 17in (3.8cm x 43.2cm) – Tiny Star light blue (130038)
- Fabric 19: fat eighth – Crisscross light blue (130041)
- Fabric 20: 2in x 6in (5.1cm x 15.2cm) – Phoebe thistle (100169)
- Fabric 21: 9in (23cm) square – Josephine emerald (100167)
- Fabric 27: 2in x 17in (5.1cm x 43.2cm) – Tiny Dots light blue (130047)
- Fabric 28: 22¾in x 2in (57.8cm x 5.1cm) – Trickles teal (130050)
- Fabric 29: 12in (30.5cm) square – Solid warm sand (120002)
- Fabric 30: scraps – Solid dusty rose (120009)
- Fabric 31: scraps – Solid salmon (120027)
- Fabric 32: scraps – Solid pale yellow (120022)
- Wadding (batting) 24in x 21in (61cm x 53.3cm)
- Lining fabric 24in x 21in (61cm x 53.3cm) (optional)
- Fabric for back of pillow, two pieces 15in x 20in (38cm x 51cm)
- Binding fabric 5in (12.7cm) x width of fabric – Solid lime green (120028)
- Black stranded embroidery cotton (floss) for embroidering eyes
- Thick card and thick paper for patterns
- Fabric glue for paper piece appliqué
- Piecing and quilting threads
- Quilter's ruler, rotary cutter and mat
- Pad to fit pillow cover

Finished size

22½in x 19½in (56.5cm x 49.5cm)

Notes

- Fabric quantities given are based on a usable width of 42in (107cm).
- Measurements are in imperial inches with metric conversions in brackets – use only *one* system throughout (preferably imperial).
- Press fabrics before cutting.
- Use ¼in (6mm) seams unless otherwise instructed.
- Read all the instructions through before you start.

Cutting Out

1 The pillow uses two blocks from the quilt – Large Cat 1 block and Small Cat 2 block – and these are made in the same way as described for the quilt. Use **Fig E** of the quilt to cut the pieces for a large cat and **Fig F** to cut the pieces for a small cat. The fabrics to use are shown in **Fig G** and **Fig H** of the quilt.

2 The cut sizes of the sashing strips needed are given in the Materials list (Fabrics 6, 8, 17, 27 and 28).

3 From the binding fabric cut two 2½in (6.4cm) x width of fabric strips. Sew together into one long length, press seams open and prepare as a double-fold binding.

Making the Patchwork

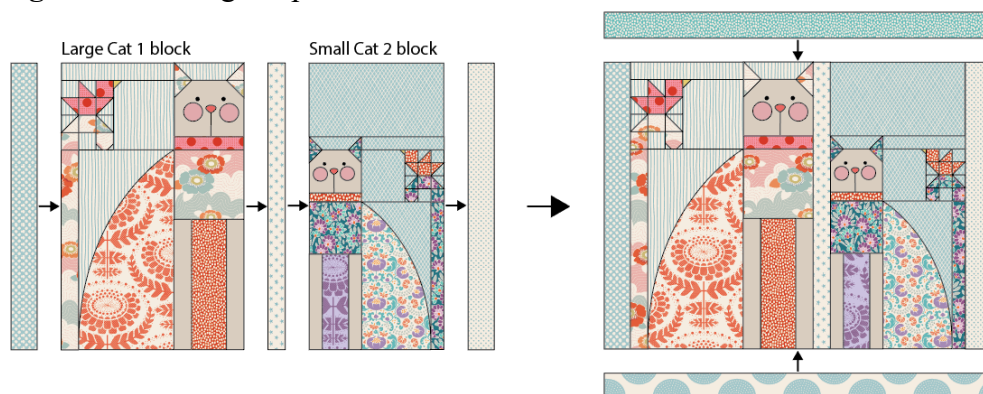
4 To make the Large Cat 1 block, follow the quilt instructions (Steps 6 to 11).

5 To make the Small Cat 2 block, follow the quilt instructions (Steps 13 and 14).

6 Add the face appliqué and sewing details to both cats, following the quilt instructions (Steps 16 to 18).

7 To assemble the patchwork, lay out the two blocks with the vertical sashing strips between them, as shown in **Fig A** here. Sew the row together and press. Now add the long horizontal sashing strips above and below the patchwork and press. Check the work is 22¾in x 20in (57.8cm x 51cm).

Fig A Assembling the pillow



Quilting and Making Up

8 Make a quilt sandwich of the patchwork, wadding (batting) and lining fabric (if using). Quilt as desired. Trim excess wadding and lining to match the patchwork size.

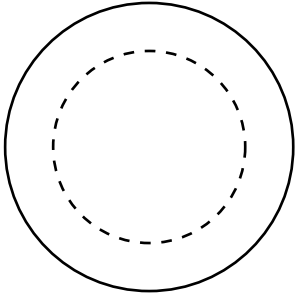
9 To make up the pillow cover, on both pieces of fabric for the pillow back, create a hem along one long side of each piece, by turning the edge over by ½in (1.3cm), twice. Sew the seam with matching thread and press.

10 The pillow has a bound edge, so the pieces are assembled with right sides out, as follows. Place the quilted patchwork right side down. Pin one backing piece on top, right side up and with the hem towards the centre. Pin the second backing piece on top, right side up and hem towards the centre (so the backing pieces overlap). Make sure the outer edges of all three

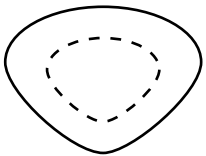
pieces are aligned. Pin the layers together and then bind as normal. As you sew the binding in place it will fix the other layers together. Press the cover and insert a pillow pad to finish.

Cat and Bird Quilt Pattern

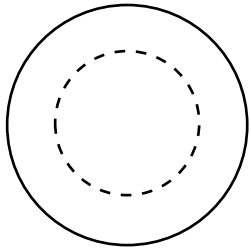
Cheek and
nose appliqués
(include seam
allowances)



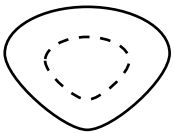
Large cheek x 16



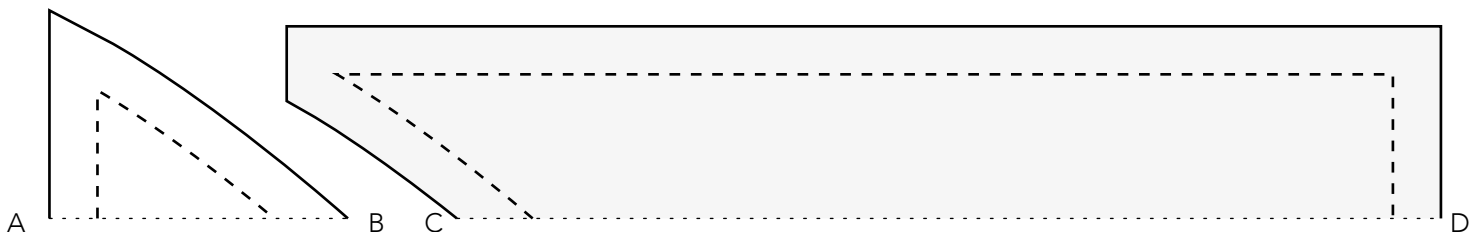
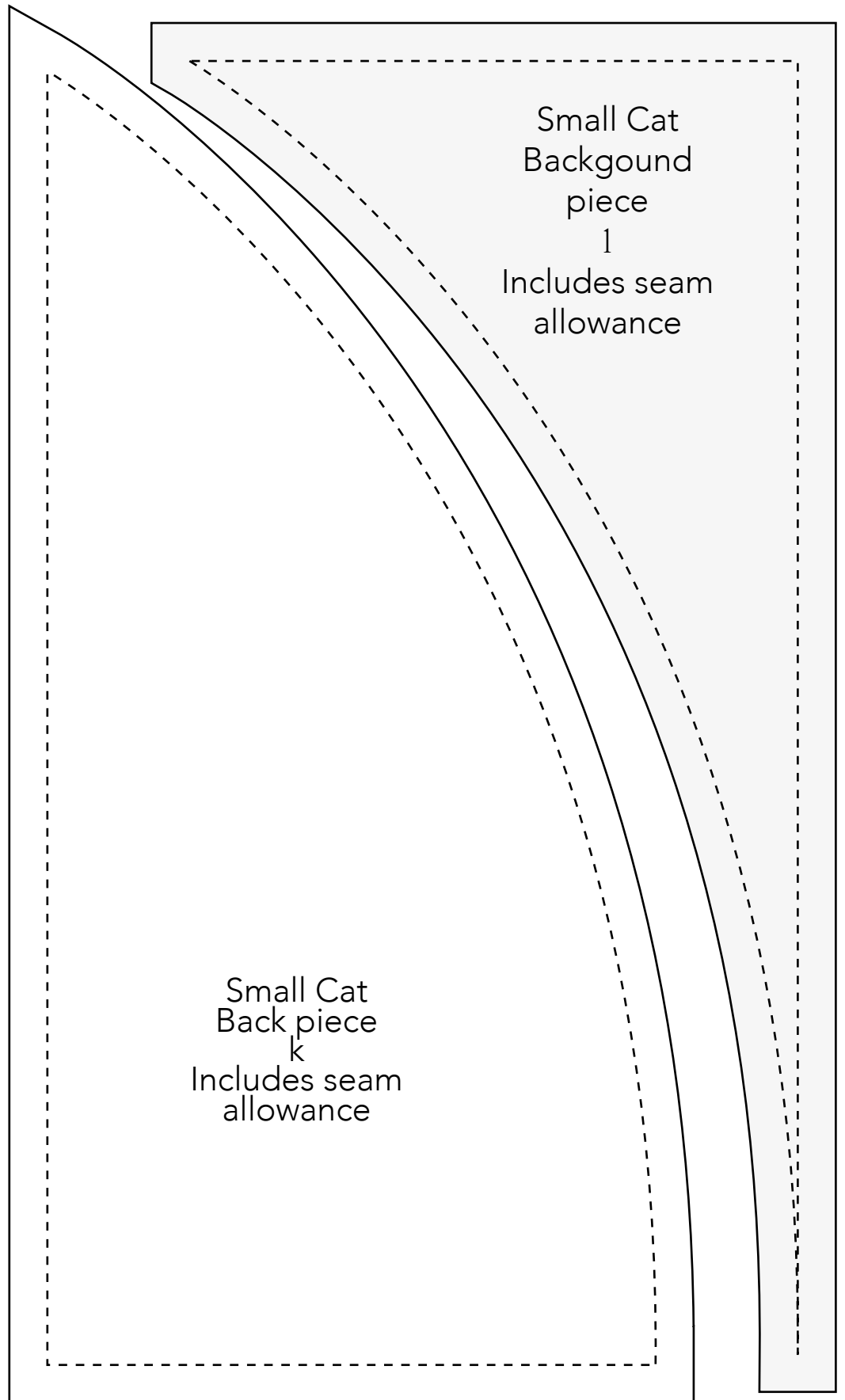
Large nose x 8



Small cheek x 24



Small nose x 12



A

B

C

D

Please check this ruler to ensure that you are printing in 100%. Pages are made in A4.



Large Cat
Back piece
k
Includes seam
allowance

Large Cat
Background
piece
1
Includes seam
allowance

