

HEIGHT  
29CM

Tilda®

Playful  
KITTEN



# Playful Kitten

Length: 24cm

## INSTRUCTIONS

### Materials needed

- Fabric 1: 36cm x 60cm (14in x 23½in) – Josephine sand (100161)
- Fabric 2: 36cm x 30cm (14in x 11¾in) – Tiny Star grey (130039)
- Embroidery thread in pink 1 metre (1 yard)
- Ribbon 15mm wide x 20cm long (½in x 8in)
- Fibrefill approx. 100 g

We also recommend using the following:

- Sewing machine
- Matching thread and a sewing needle for hand sewing
- Flower stick or chopstick for turning and stuffing
- Thick paper for copying patterns
- Black hobby paint and a big ball-headed pin for stamping eyes

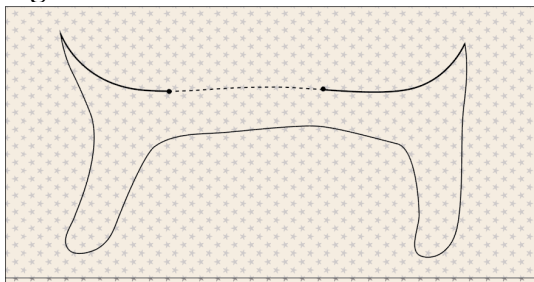
### Making the Kitten

**1** Refer to the bullet points below on making the project before you start. Copy all the pattern pieces onto thick paper and cut out the shapes. Read all the project instructions through before you start.

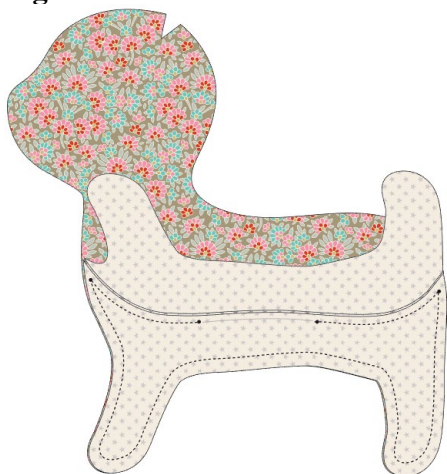
- Use thick paper for copying patterns.
- The outer line on a pattern is the sewing line (generally, no seam allowances are included).
- When sewing the seams, reduce your stitch length to 1.5mm–1.6mm.
- Unless otherwise instructed, sew on the outer line of the pattern and then cut out the shapes after sewing, cutting ¼in–½in (3mm–6mm) outside the sewn line.
- To get a good shape, cut snips in the seam allowance where seams curve tightly inwards.
- Stuff well, using a stick to fill small areas.
- Sew up openings with matching thread and small slipstitches.

**2 Body:** From Fabric 1 cut a piece 11¼in x 23½in (28.5cm x 60cm) for the top of the body. Fold it in half, right sides together, and press. It should be approximately 11¼in (28.5cm) wide x 11¾in (30cm) tall. Trace the body pattern onto the fabric and then cut it out with a ¼in (6mm) seam allowance all round. You will have two mirrored body parts.

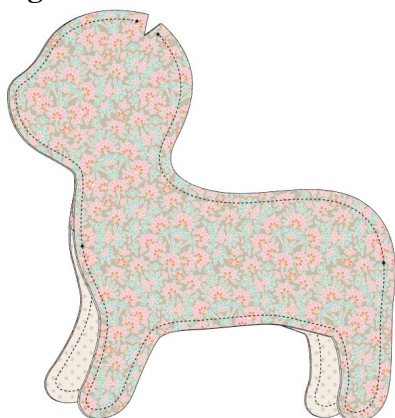
**3** From Fabric 2 cut an 11in (28cm) square for the underside of the kitten. Fold the fabric in half, right sides together, and press. It should be approximately 5½in (14cm) high. Trace the pattern for the underside onto the fabric. Sew along the top line *only*, leaving an opening for turning in the seam, as shown in **Fig A**. While the fabric is still folded, cut out the piece for the underside with about a ¼in (6mm) seam allowance all round.

**Fig A**

**4** Unfold this underside piece so it is a single layer and press the seam. Take one upper body part (cut previously) and pin it on one side of the underside, making sure the legs line up and the pieces are right sides together. Sew along the legs as shown in **Fig B**. In the same way, sew the other body part onto the other side of the underside.

**Fig B**

**5** Now line up the body parts and sew around the rest of the kitten, as in **Fig C**.

**Fig C**

**6** To give the head some volume, fold the notch on the top of the head to the opposite side, arranging the fabric edges so that the seams meet, and then sew across the head (**Fig D**). Trim the seam allowance and cut a few notches in places on the kitten where seams curve inwards.

**Fig D**

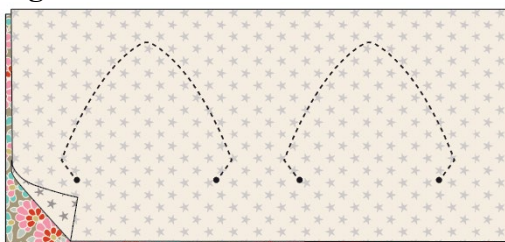




7 Turn the kitten to the right side through the opening in the underside and press before stuffing. Stuff well, using a wooden stick or similar tool to fill areas where it is difficult to use your fingers. Sew up the opening.

**8 Ears:** Cut a piece of Fabric 1 and of Fabric 2 each about 3in x 8in (7.6cm x 20.3cm) and place them right sides together as in **Fig E**. Using the ear pattern, trace two ears on the fabric and sew on the marked line, leaving the bottom open. Cut out the ears with about  $\frac{1}{8}$ in (3mm) seam allowance around the top curve of the ears and allowing a bigger seam allowance at the bottom opening. Turn the ears through to the right side, fold in the seam allowance around the opening and press the ears.

**Fig E**



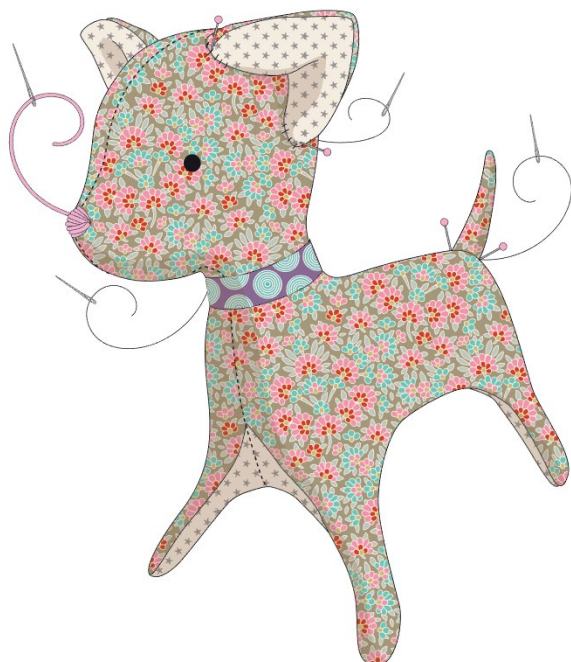
**9 Tail:** Cut a piece of Fabric 1 about 3in x 8in (7.6cm x 20.3cm), fold it in half right sides together, as in **Fig F**, and press. Trace the tail pattern onto the fabric and sew around. Cut out the tail with a small  $\frac{1}{8}$ in (3mm) seam allowance all round and a bigger seam allowance at the bottom opening. Turn through to the right side with the help of a wooden stick. Fold in the extra seam allowance around the opening and press. Stuff the tail using a wooden stick or similar tool (**Fig G**).

**Fig F**



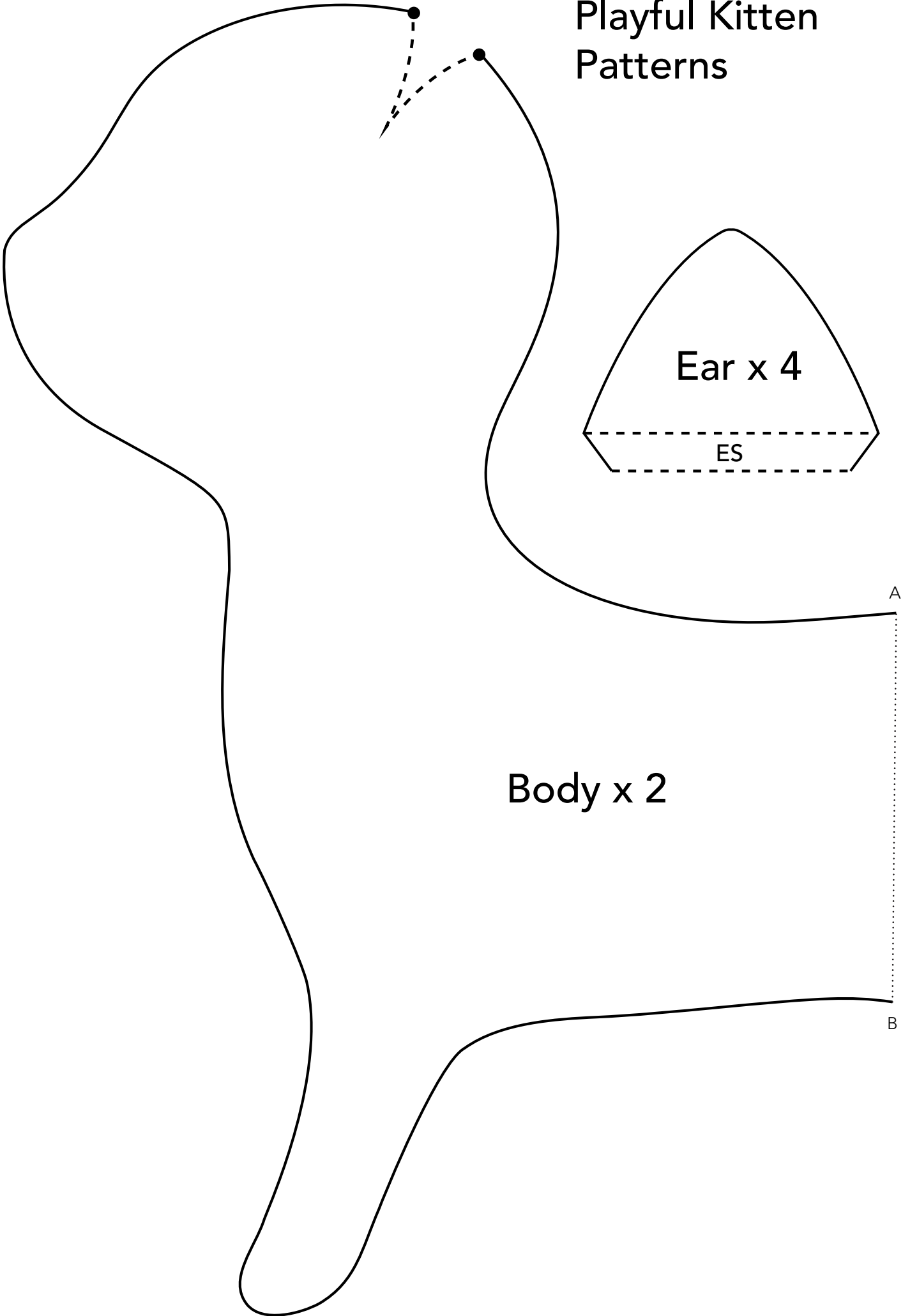
**Fig G****Finishing Off**

**10** Pin the tail onto the kitten and then sew it into position. Fold the ears a little as shown in **Fig H**, pin them onto the sides of the head and then sew in place with small stitches. For the ribbon collar, fold over one short end by about  $\frac{1}{4}$ in (6mm). Fit the ribbon around the neck, trim off excess length but allowing for about a  $\frac{1}{4}$ in (6mm) to be folded over. Sew the two folded ends of the ribbon together with a few stitches.

**Fig H**

**11** Create the eyes by using black hobby paint and a big ball-headed pin, with a head about  $\frac{3}{8}$ in (1cm) diameter. To mark where the eyes will be, wiggle the pin back and forth until you have a visible hole. Dip the head of the pin in paint and then stamp eyes on the kitten. You could also find something else to use as a stamp or draw circles and paint on eyes with a thin brush. To finish, sew the nose using the embroidery thread and satin stitch.

# Playful Kitten Patterns



Add a seam allowance to all pattern pieces. The edges of the patterns mark the seams. Dotted lines indicate openings, divisions between two fabrics and folded edges. ES stands for Extra Seam allowance and if it appears in the pattern, it is important to add a liberal seam allowance. Sew everywhere that a solid line appears in the pattern.

