



PLUM GARDEN  
  
AUTUMN BEAR

Height 51 cm

Tilda®

# Autumn Bear

Height: 51cm

## Materials needed

- Fabric 1: 54cm x 55cm (21<sup>1</sup>/<sub>4</sub>in x 21<sup>3</sup>/<sub>4</sub>in) – Teardrop nutmeg (100186)
- Fabric 2: 54cm x 25cm (21<sup>1</sup>/<sub>4</sub>in x 10in) – Biscotti Plaid teal (130065)
- DMC stranded cotton in mauve-pink (316) 1m (40in)
- FIBREFILL APPROX. 170G

We also recommend using the following:

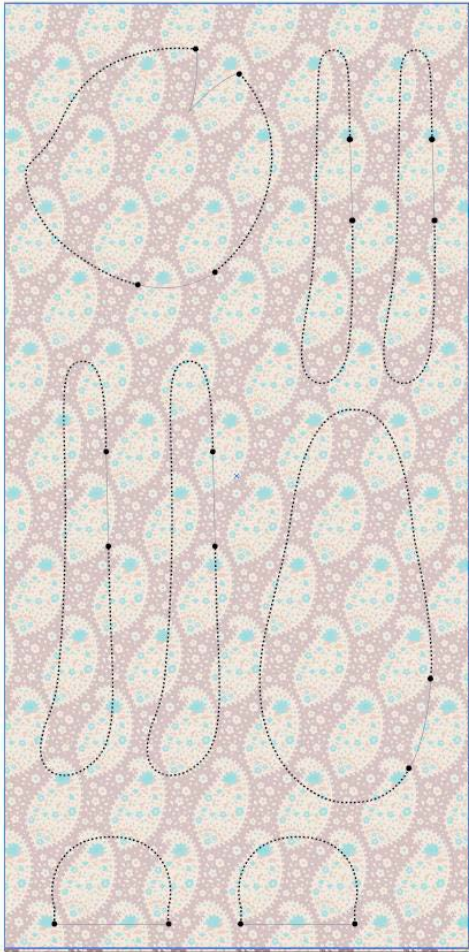
- Sewing machine
- Matching thread and a long sewing needle for hand sewing
- Flower stick or chopstick for turning and stuffing
- Thick paper for copying patterns
- Black hobby paint and a big ball-headed pin for stamping eyes

## Making the Bear

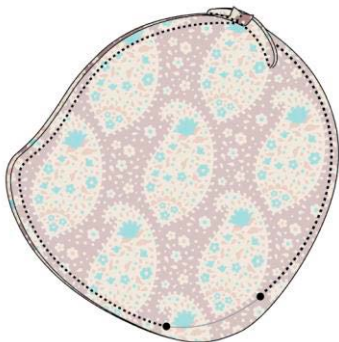
**1** Refer to the bullet points below on making the project before you start.

- Read all the project instructions through before you start.
- Copy all the pattern pieces onto thick paper and cut out the shapes.
- The outer line on a pattern is the sewing line (generally, no seam allowances are included).
- When sewing the seams, reduce your stitch length to 1.5mm–1.6mm.
- Unless otherwise instructed, sew on the outer line of the pattern and then cut out the shapes after sewing, cutting <sup>1</sup>/<sub>8</sub>in–<sup>1</sup>/<sub>4</sub>in (3mm–6mm) outside the sewn line.
- To get a good shape, cut snips in the seam allowance where a seam curves tightly inwards.
- Stuff well, using a stick to fill small areas such as ears.
- Sew up gaps with matching thread and small slipstitches.

**2 Body, Head, Limbs and Outer Ears:** Fold the piece of Fabric 1 right sides together so that it's 10<sup>5</sup>/<sub>8</sub>in (27cm) wide x 21<sup>3</sup>/<sub>4</sub>in (55cm) high. On the fabric trace one head, one body, two arms, two legs and two ears (see **Fig A**). Sew around all the shapes and leave the openings open. Cut out all the pieces and cut notches in the seam allowances where seams curve inwards.

**Fig A**

**3** On the head piece, pinch the two raw edges of fabric together at the opening on the top of the head, so the edges meet. Pin together and then sew across (**Fig B**). This will give a three-dimensional look to the head.

**Fig B**

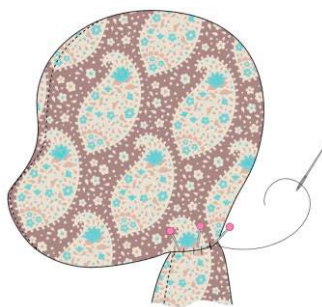
**4** Turn all the pieces through to the right side with the help of a flower stick or similar tool. Fold in the seam allowances around the openings, except on the ears, and then press the pieces. Stuff all the pieces except the ears. Hand stitch the openings on the body and the limbs to close them. Leave the neck opening on the head open.

**5** Place the neck opening of the head over the top of the body (**Fig C**). Attach the head to the body with pins around the edge and then stitch the head onto the body (**Fig D**).

**Fig C**



**Fig D**



**6** Pin the arms and legs to the body. Using a long needle and a doubled thread (or embroidery thread if you prefer), sew through one leg, on through the body and out through the other leg (**Fig E**). Make a small stitch and then sew back again to where you started. Secure the thread well. Attach the arms in the same way. Attaching the arms and legs in this way makes them easy to move.

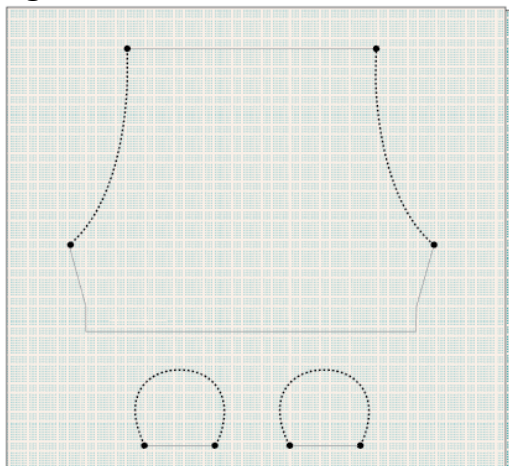
**Fig E**



**7 Shorts and Ear Middles:** Fold the piece of Fabric 2 in half, right sides together, and press, as in **Fig F**. Trace the shorts and two ear middles onto the fabric. Stitch around the ear

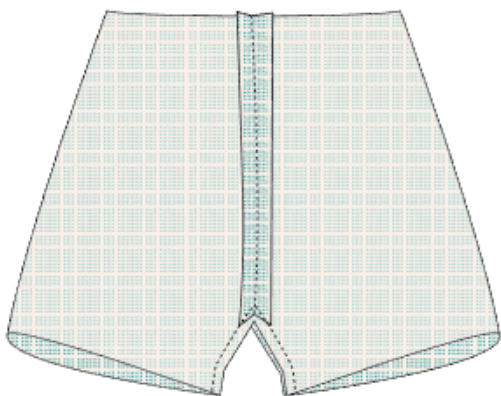
middles and leave the opening open. Sew along the long, curved edge on each side of the shorts. Cut out the ear middles and the whole shorts.

**Fig F**



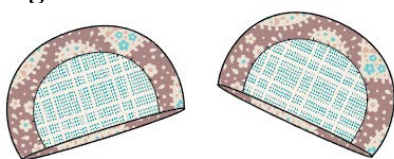
**8** At the crotch area of the shorts, fold the short, curved edges together, so the seams you have just sewn are on top of each other. Now sew the curved area between the legs (**Fig G**). The curve is quite tight, so stitch slowly. Turn the shorts through to the right side. Fold in and press the extra seam allowance around each leg opening and also around the waist. Sew the seam around the leg openings (you could do this by hand).

**Fig G**



**9** Turn the ear middles through to the right side and press. Place the middles onto the outer ears with the open edges lined up. Hand stitch the middle ears onto the ears, sewing only through one of the fabric layers on the ears (**Fig H**). Fold in the extra seam allowance around the opening and press the ears. Fill the ears with a tiny bit of stuffing around the edges, using a stick to poke it into place.

**Fig H**



**10** Pin the ears to each side of the head, curving each ear a little into a slight bow shape. Adjust until you are pleased with their positions and then stitch them onto the head (**Fig I**).

**Fig I**



**11** Put the shorts on the bear and fold two pleats in the front and two in the back, so the shorts fit the waist of the bear and do not fall off. Pin the pleats in place and then sew them with some small stitches (you should be able to do this with the shorts still on the bear). You don't have to sew the shorts onto the bear.

### Finishing Off

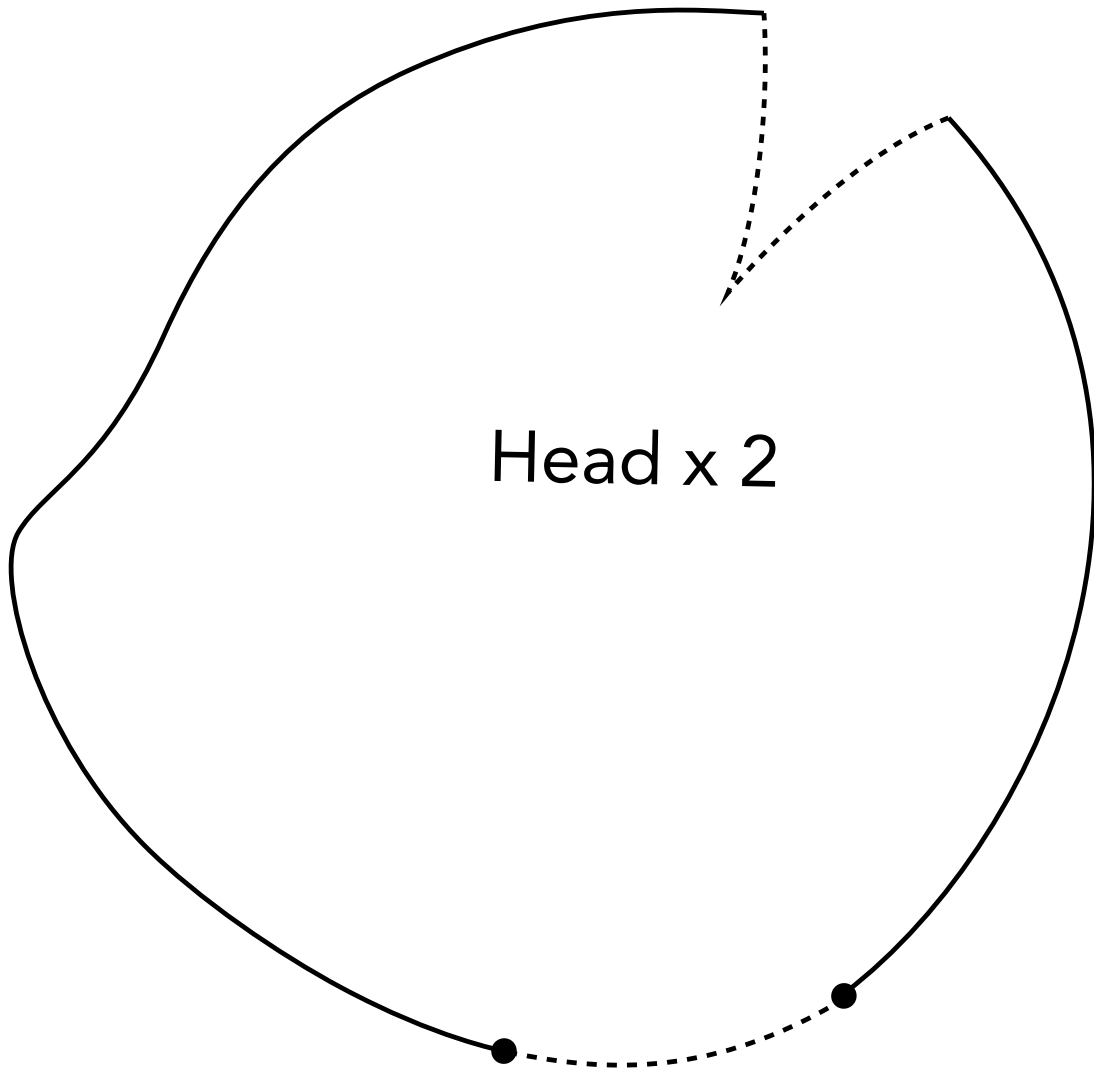
**12** Embroider the nose using all six strands of the embroidery cotton, sewing across the nose in satin stitch (**Fig J**). Make sure you don't pull the stitches too tightly.

**Fig J**

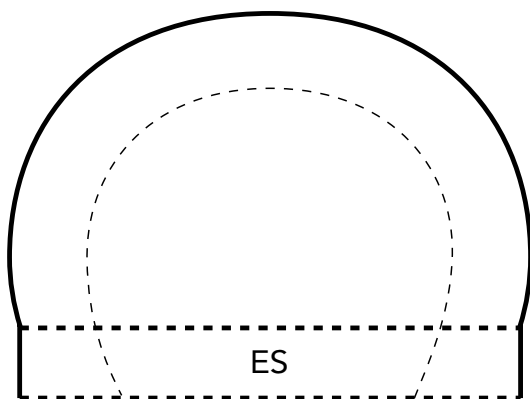


**13** To make the face, we suggest using black hobby paint. The eyes are best made with a big ball-headed pin. Use a pin to mark where the eyes will be and wiggle the pin back and forth until you have a visible hole. Dip the head of the pin in paint and stamp eyes. If you do not have this kind of pin, find something else to use as a stamp, or draw circles about  $\frac{1}{4}$ in (6mm) in diameter, and paint on eyes with a thin brush.

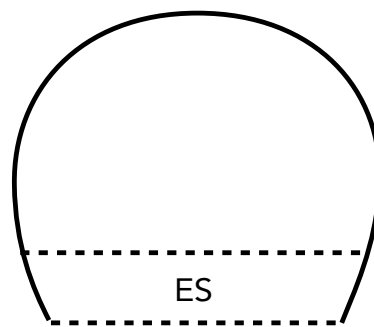
Autumn Bear Patterns

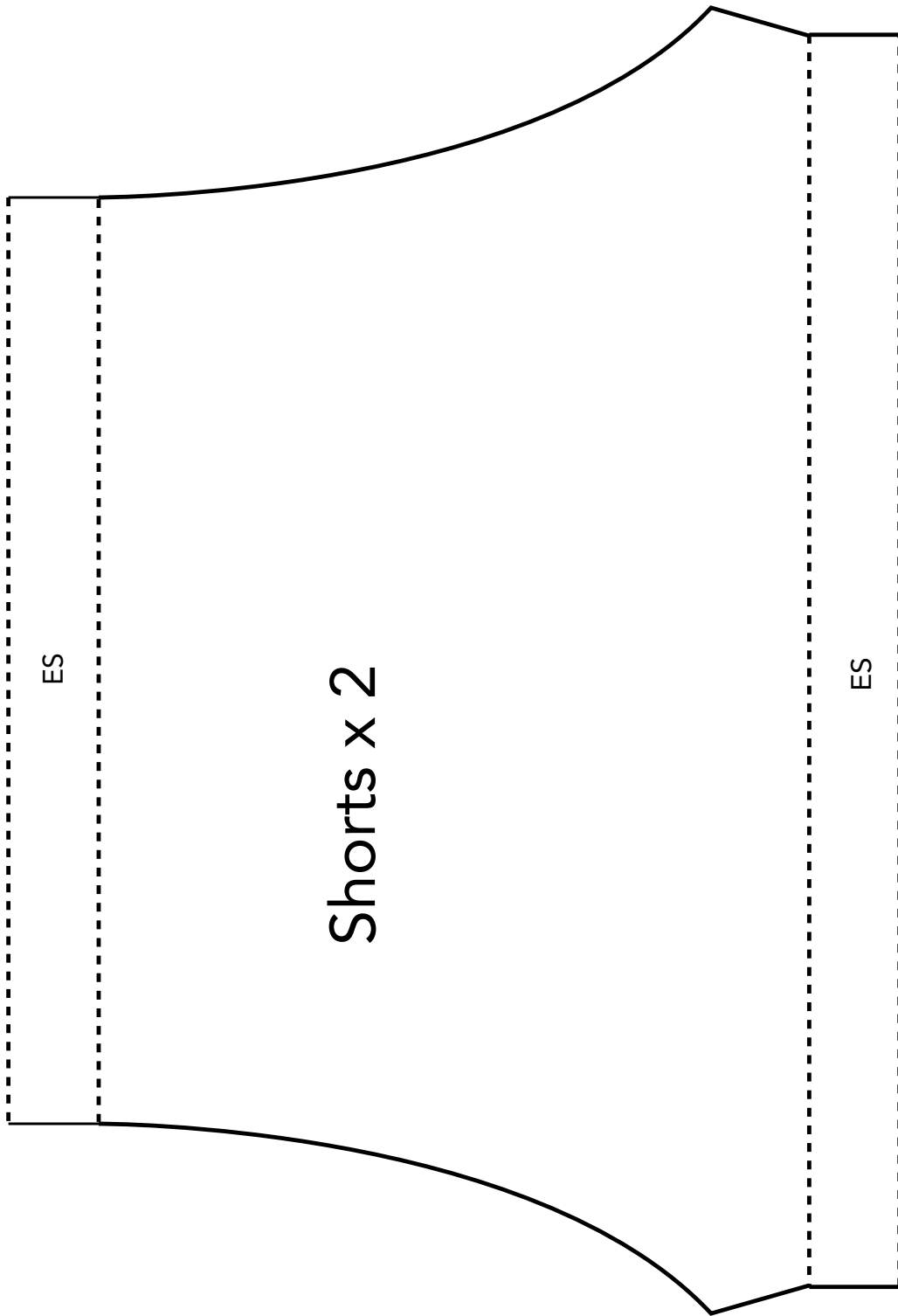


Ear x 4



Ear middle  
x 4



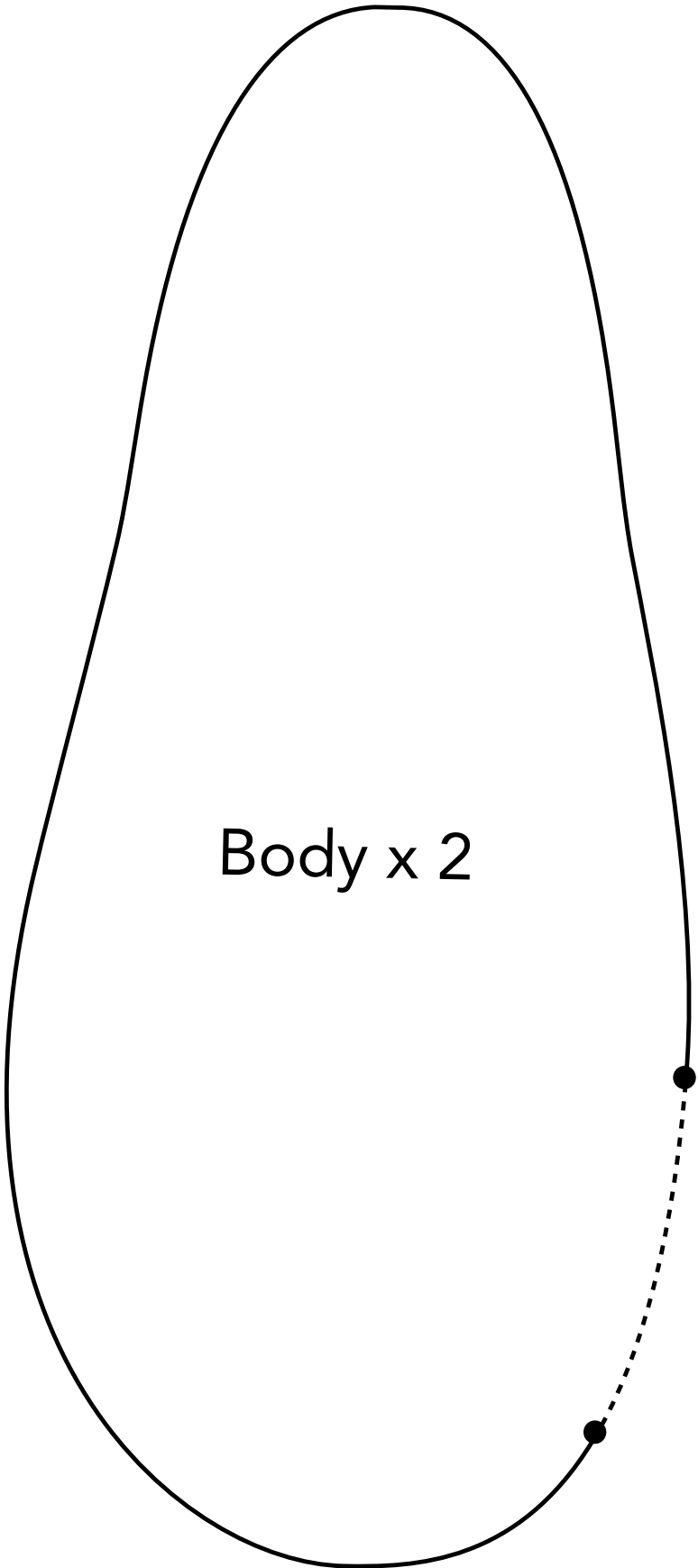


# Shorts x 2

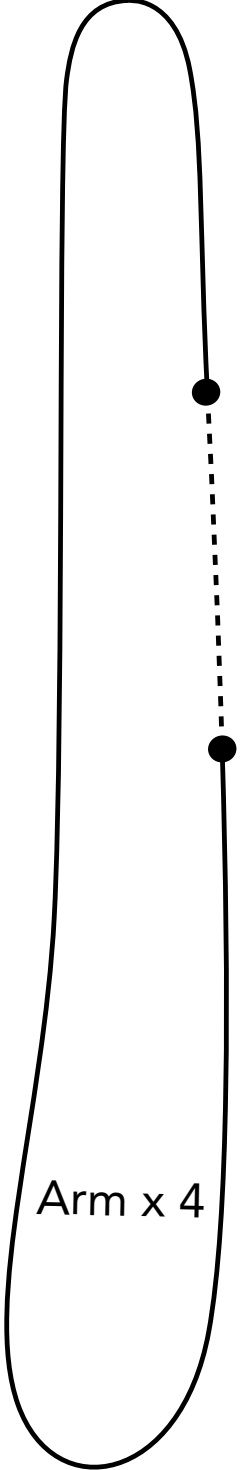
Please check this ruler to ensure that you are printing in 100%. Pages are made in A4.



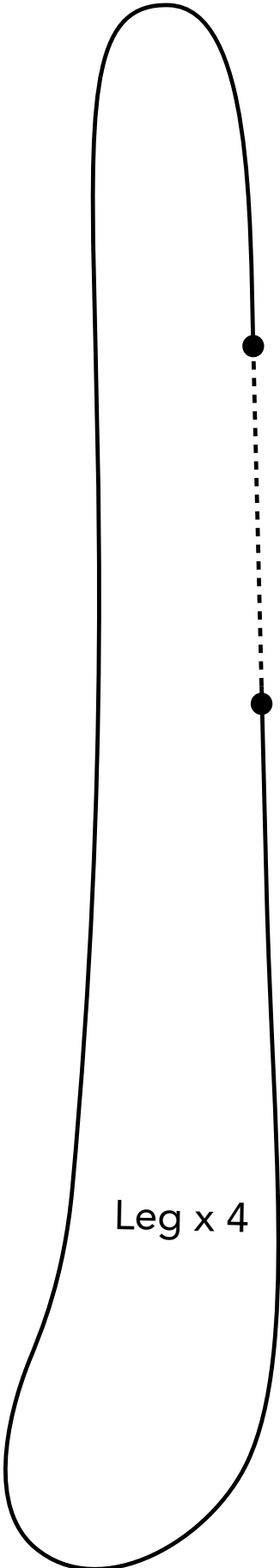




Body x 2



Arm x 4



Leg x 4

Tilda®  
FABRICS