



Tilda®

*Angel*  
MOUSE

Height 48 cm

# Angel Mouse

Height: 51cm

## Materials

- Fabric 1: 54cm x 55cm (21¼in x 21¾in) – Eliza grey (100210)
- Fabric 2: 54cm x 25cm (21¼in x 10in) – Tiny Dots pink (130046)
- DMC stranded cotton in light mauve-pink (3727) 1m (40in)
- FIBREFILL APPROX. 170G

We also recommend using the following:

- Sewing machine
- Matching thread and a long sewing needle for hand sewing
- Flower stick or chopstick for turning and stuffing
- Thick paper for copying patterns
- Black hobby paint and a big ball-headed pin for stamping eyes

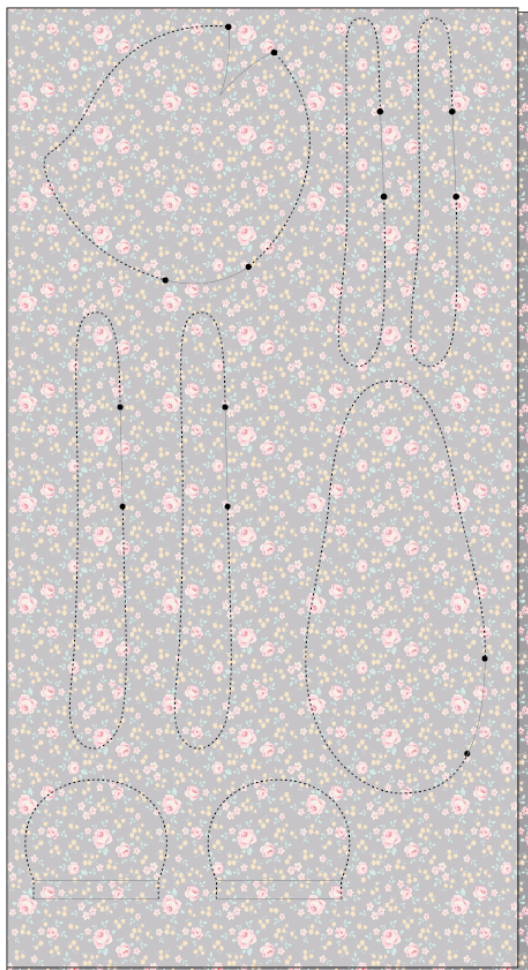
## Making the Mouse

**1** Refer to the bullet points below on making the project before you start.

- Read all the project instructions through before you start.
- Copy all the pattern pieces onto thick paper and cut out the shapes.
- The outer line on a pattern is the sewing line (generally, no seam allowances are included).
- When sewing the seams, reduce your stitch length to 1.5mm–1.6mm.
- Unless otherwise instructed, sew on the outer line of the pattern and then cut out the shapes after sewing, cutting ⅛in–¼in (3mm–6mm) outside the sewn line.
- To get a good shape, cut snips in the seam allowance where a seam curves tightly inwards.
- Stuff well, using a stick to fill small areas such as ears.
- Sew up gaps with matching thread and small slipstitches.

**2 Body, Head, Limbs and Outer Ears:** Fold the piece of Fabric 1 right sides together so that it's 10⅝in (27cm) wide x 21¾in (55cm) high. On the fabric trace one head, one body, two arms, two legs and two ears (see **Fig A**). Leave enough space at the base of the fabric to cut a 10in x 1¼in (25.4cm x 3.2cm) strip for the tail later.

**3** Machine sew around all the shapes and leave the openings open. Cut out all the pieces with a seam allowance and cut notches in the seam allowances where seams curve inwards.

**Fig A**

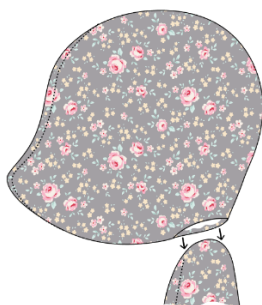
**4** On the head piece, pinch the two raw edges of fabric together at the opening on the top of the head, so the edges meet. Pin together and then machine sew across (**Fig B**). This will give a three-dimensional look to the head.

**Fig B**

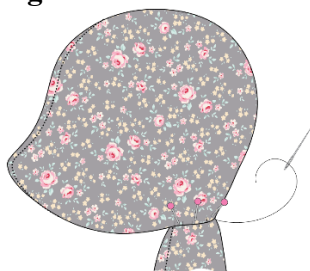
**5** Turn all the pieces through to the right side with the help of a flower stick or similar tool. Fold in the seam allowances around the openings, except on the ears, and then press the pieces. Stuff all the pieces, except the ears. Hand stitch the openings on the body and the limbs to close them. Leave the neck opening on the head open.

6 Place the neck opening of the head over the top of the body (**Fig C**). Attach the head to the body with pins around the edge and then hand stitch the head onto the body (**Fig D**).

**Fig C**



**Fig D**



7 Pin the arms and legs to the body. Using a long needle and a doubled thread (or embroidery thread if you prefer), sew through one leg, on through the whole body and out through the other leg (**Fig E**). Make a small stitch and then sew back again to where you started. Secure the thread well. Attach the arms in the same way. Attaching the arms and legs in this way makes them easy to move.

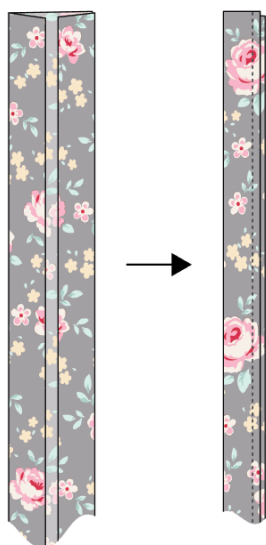
**Fig E**





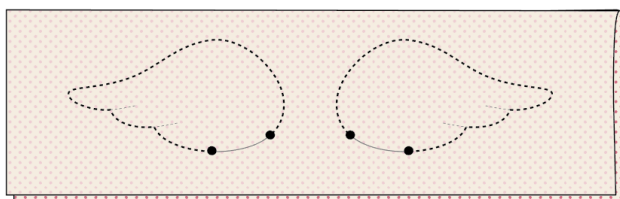
**8 Tail:** From the remainder of Fabric 1 cut a 10in x 1¼in (25.4cm x 3.2cm) strip (this size includes a seam allowance). Press in each long side towards the middle and then press the strip double, so that it's about ¼in (6mm) wide (**Fig F**). Machine sew a line along the open side to secure the layers together.

**Fig F**

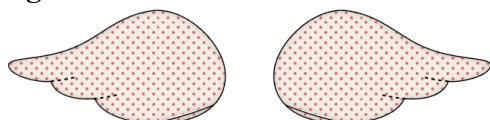


**9 Wings:** Cut a Fabric 2 piece, 9in x 5½in (23cm x 14cm), fold it in half along the length, right sides together, and press. Trace the wings onto the fabric. Machine stitch around, leaving the openings open (**Fig G**). Cut out with a small seam allowance. Turn through to the right side with the help of a flower stick or similar tool. Sew the two small lines on each wing – these will form indentations when the wings are stuffed (**Fig H**). Stuff each wing with the help of a flower stick and then hand sew up the opening.

**Fig G**



**Fig H**

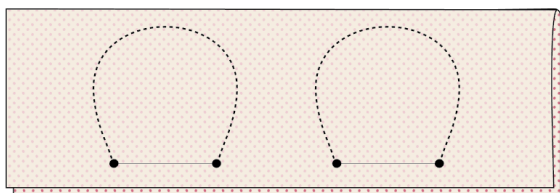


**10 Ears Middles:** Cut a Fabric 2 piece about 9in x 5½in (23cm x 14cm), fold it in half along the length, right sides together, and press. Trace the ear middle patterns onto the fabric. Machine stitch around, leaving the openings open (**Fig I**). Cut out with a small seam allowance. Turn through to the right side and press.

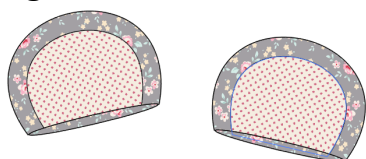
**11** Place the ear middles onto the outer ears with the open edges lined up. Hand stitch the inner ears onto the outer ears, sewing only through one of the fabric layers on the ears (**Fig**

**J).** Fold in the extra seam allowance around the opening and press. Fill the outer ears with a tiny bit of stuffing around the edges, using a stick or similar tool to poke it into place.

**Fig I**



**Fig J**



**12 Skirt:** From the remainder of Fabric 2, cut a strip  $3\frac{3}{4}$ in x  $20\frac{1}{2}$ in (9.5cm x 52cm) – this size includes a seam allowance. Fold the fabric right sides together, so the short ends meet and then machine sew the short ends together. Fold up and press the seam allowance along the top and bottom and then sew the seam allowance along the bottom. Using a doubled thread, hand sew gathering stitches along the top edge of the skirt. Pull up the thread to make gathers. Put the skirt on the mouse adjust the gathers and then fasten the thread (**Fig K**).

**13** Pin the ears to each side of the head, curving each ear a little into a slight bow shape. Adjust until you are pleased with their positions and then stitch them onto the head. Sew the tail to the lower bottom of the mouse, under the skirt.

**Fig K**



## Finishing Off

**14** Embroider the nose using all six strands of the embroidery cotton, sewing across the nose in satin stitch (**Fig L**). Make sure you don't pull the stitches too tightly.

**Fig L**

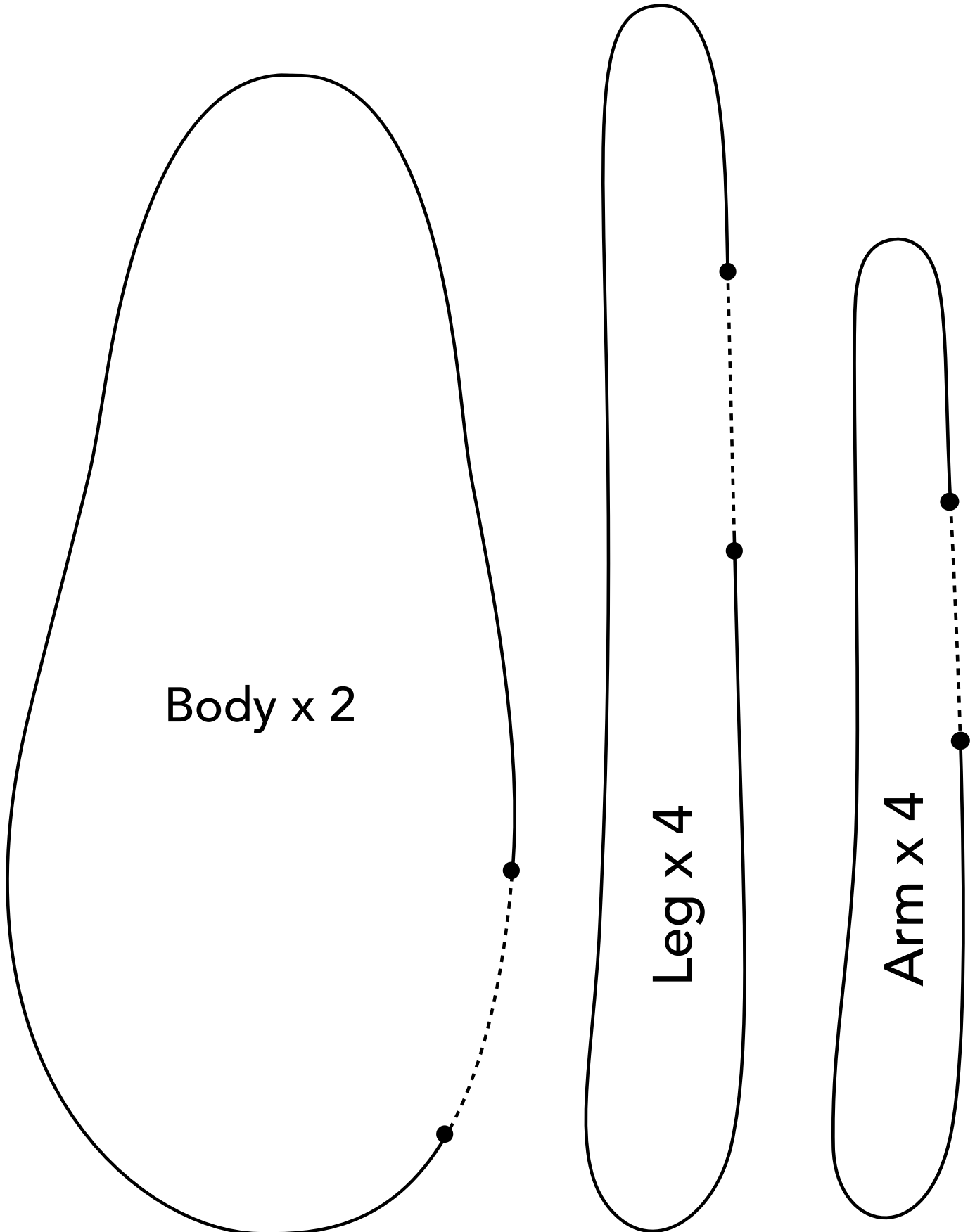


**15** To make the face, we suggest using black hobby paint. The eyes are best made with a big ball-headed pin. Use a pin to mark where the eyes will be and wiggle the pin back and forth until you have a visible hole. Dip the head of the pin in paint and stamp eyes. If you do not have this kind of pin, find something else to use as a stamp, or draw circles about  $\frac{1}{4}$ in (6mm) in diameter and paint on eyes with a thin brush.

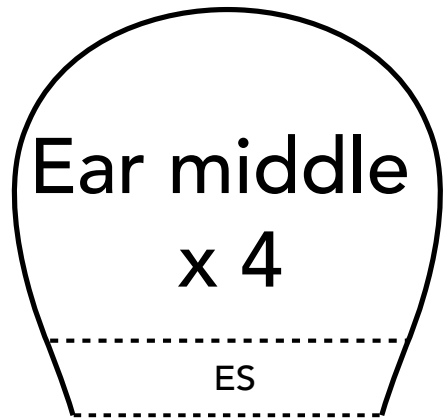
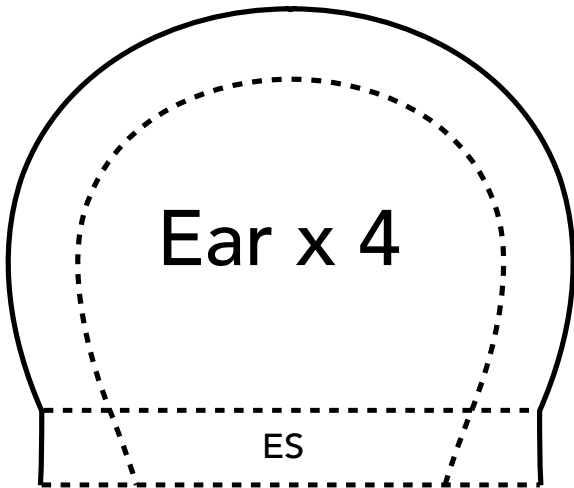
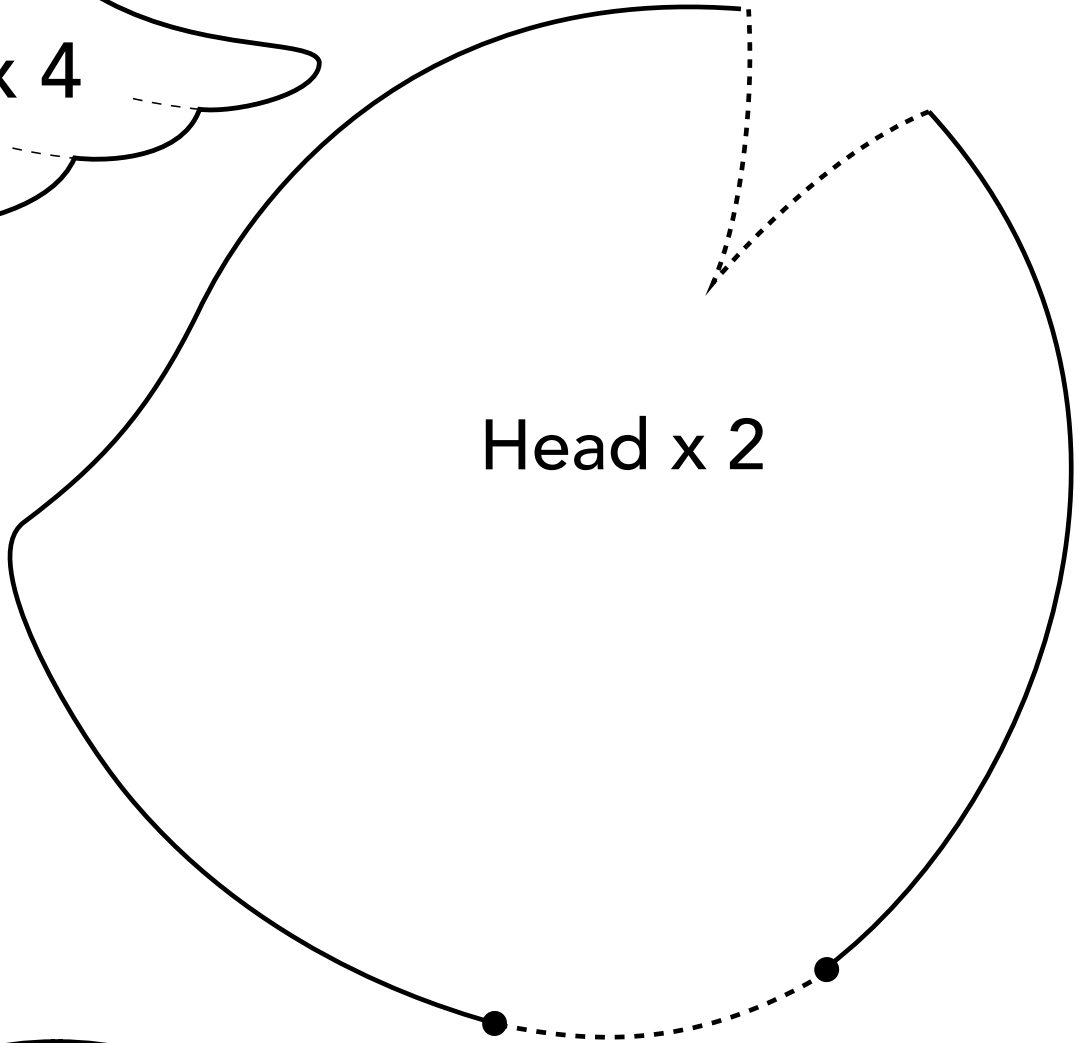
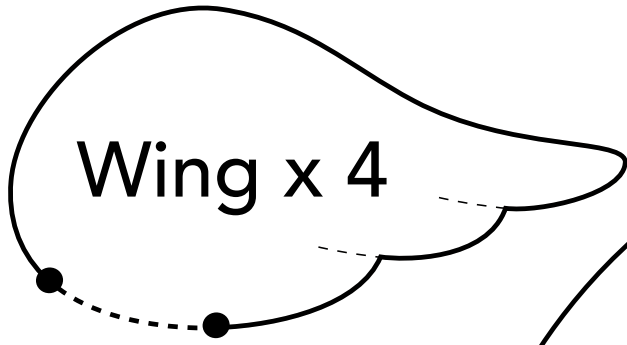
## Angel Mouse Pattern

Add a seam allowance to all pattern pieces. The edges of the patterns mark the seams. Dotted lines indicate openings and folded edges. ES stands for Extra Seam allowance and if it appears in the pattern, it is important to add a liberal seam allowance. Sew everywhere that a solid line appears in the pattern.

# ANGEL MOUSE PATTERNS







Please check this ruler to ensure that you are printing in 100%. Pages are made in A4.

