



Tilda®



Pyjama



SANTA

Height 62 cm

Pyjama Santa

(Mrs. Santa – Use the Autumn Angel Pattern without wings and apron. Sew stockings and hat the same way as for Mr. Santa.)

Height: 62cm

Materials

- Fabric 1: 54cm x 62cm (21¼in x 24½in) – Tilda doll fabric (140001)
- Fabric 2: 54cm x 85cm (21¼in x 33½in) – Apple Cake Stripe red (130068)
- Fabric 3: 15cm x 31cm (6in x 12¼in) – Lydia raspberry (100202)
- Wool yarn for the hair in grey approximately 2m (80in)
- Embroidery yarn in red for decorating clothes approximately 1.5m (60in)
- FIBREFILL APPROX. 200G

We also recommend using the following:

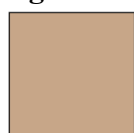
- Sewing machine
- Matching thread
- A sewing needle for hand sewing and a large needle for yarn
- Flower stick or chopstick for turning and stuffing
- Thick paper for copying patterns
- Black hobby paint and a metal pin with small head for stamping eyes
- Lipstick or rouge and a dry brush for rosy cheeks

Making the Santa

1 Refer to the bullet points below on making the project before you start. Copy all the pattern pieces onto thick paper and cut out the shapes. The fabrics used are shown in **Fig A**.

- Read all the project instructions through before you start.
- Use thick paper for copying patterns.
- The outer line on a pattern is the sewing line (generally, no seam allowances are included).
- When sewing the seams, reduce your stitch length to 1.5mm–1.6mm.
- Unless otherwise instructed, sew on the outer line of the pattern and then cut out the shapes after sewing, cutting ⅛in–¼in (3mm–6mm) outside the sewn line.
- To get a good shape, cut snips in the seam allowance where seams curve tightly inwards.
- Stuff well, using a stick to fill small areas.
- Sew up openings with matching thread and small slipstitches.

Fig A



Fabric 1
Tilda doll
fabric
(140001)



Fabric 2
Apple Cake
Stripe red
(130068)



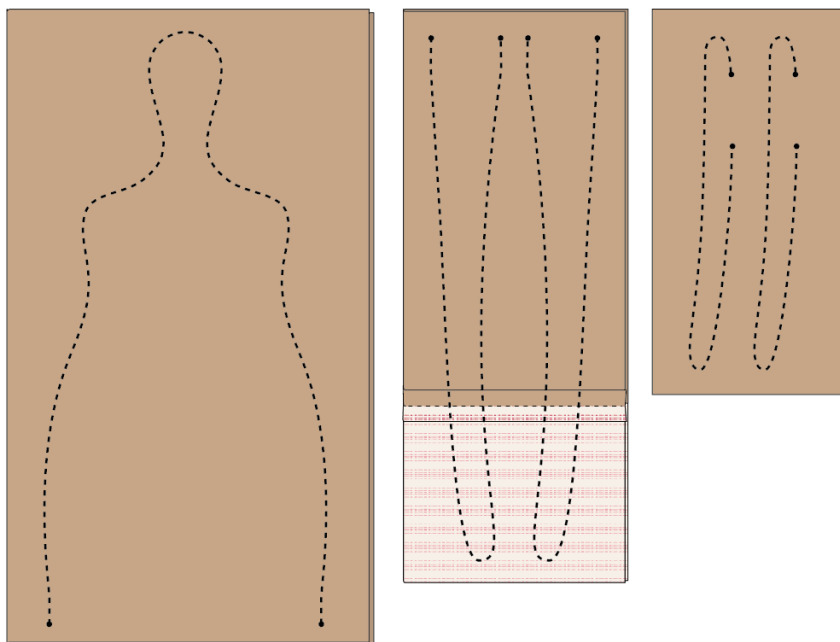
Fabric 3
Lydia
raspberry
(100202)

2 Body: From doll Fabric 1, cut out a piece for the body 14¾in (37.4cm) square. Cut out a piece of fabric for the arms 9in (23cm) square. Fold each piece of fabric in half, right sides together, and press (see **Fig B**).

From doll Fabric 1, cut a piece for the legs $9\frac{3}{4}$ in (24.6cm) square. From Fabric 2 cut a piece for the socks $5\frac{1}{2}$ in (14cm) wide x $9\frac{3}{4}$ in (24.6cm) tall. Sew the sock fabric piece below the leg piece, sewing together along the long side, and press the seam open. Fold the pieced section in half right sides together and press.

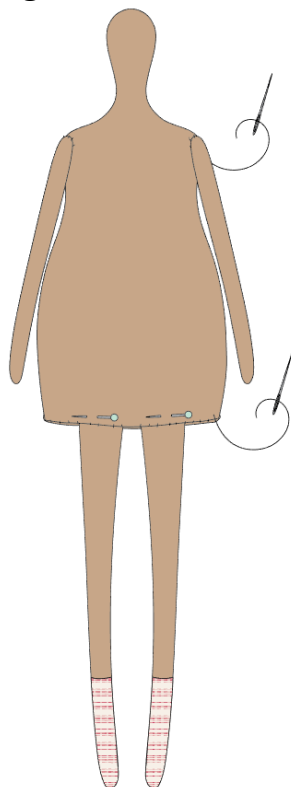
On the relevant fabric pieces, draw one body, two arms and two legs. For the leg pattern, place the short dashed line on the seam line, as shown. Mark the openings and sew around as shown in **Fig B**. Cut out the pieces with an approximate $\frac{1}{8}$ in (4mm) seam allowance. Cut notches in the seam allowance where the seams curve inwards. Turn through to the right side with the help of a flower stick or similar tool.

Fig B

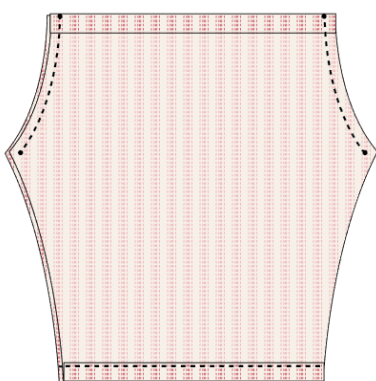


3 Fold in the seam allowance on the arms and the extra seam allowance around the opening on the body. Leave the seam allowance on the legs untouched. Press all the pieces and then stuff with the help of a flower stick and your fingers. Hand stitch the openings on the arms closed.

4 Place the extra seam allowance on the legs inside the opening on the body. The legs should be placed towards the middle as shown in **Fig C** (not on each side of the opening). Hand stitch the opening closed, while at the same time fastening the legs into position. Place the arms in front of the body, so they cover the shoulders, and hand stitch around the top of the arms.

Fig C

5 Pants: From Fabric 2, cut a piece $21\frac{1}{4}$ in x $11\frac{1}{2}$ in (54cm x 29.2cm). Mark two pant pieces and cut out with a seam allowance. Fold in and press the extra seam allowance on the top and bottom of each piece. Machine sew the seam allowance on the bottom. Place the two pieces right sides together and sew the gently curved edge at the top on each side (**Fig D**). Open out the piece to create two legs, with the seam in the middle, and then sew along each leg (**Fig E**). Cut notches in the seam allowance where seams turn tightly inwards. Turn through to the right side and then press the pants.

Fig D**Fig E**

6 Jacket: From Fabric 2, cut a piece $21\frac{1}{4}$ in x 12in (54cm x 30.5cm). Mark two jacket pieces and the long edge (panel) for the front of the jacket and cut out with a seam allowance. From Fabric 2, cut a piece of fabric 11in x $9\frac{1}{2}$ in (28cm x 24.1cm). Mark two sleeves and cut out with a seam allowance. Fold in, press and then sew the extra seam allowance on each of the sleeves.

7 Fold in and press the seam allowance along the long sides of the panel for the front of the jacket (**Fig F**). Place it in the middle of one of the jacket pieces, right sides facing up. Machine sew along the long sides (**Fig G**).

Fig F

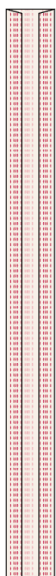
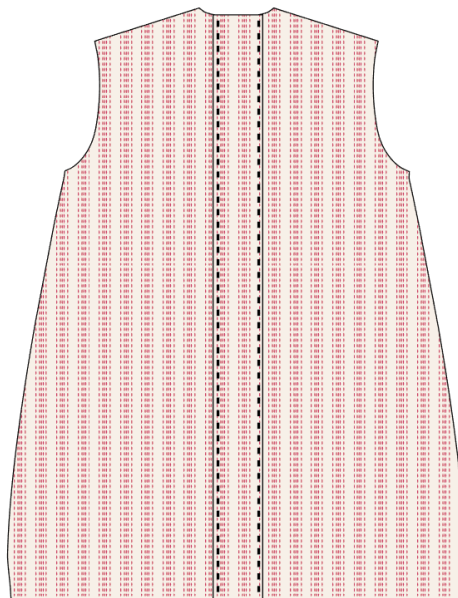


Fig G



8 Place the two jacket pieces right sides together and sew along the shoulder on each side (**Fig H**). Open up the jacket piece and pin the curved shoulder of the sleeve, right sides together, along the curved arm opening on the jacket, as in **Fig I**. To make it easier you can cut notches in the seam allowances. Machine sew the sleeve in place. Repeat with the other sleeve.

Fig H

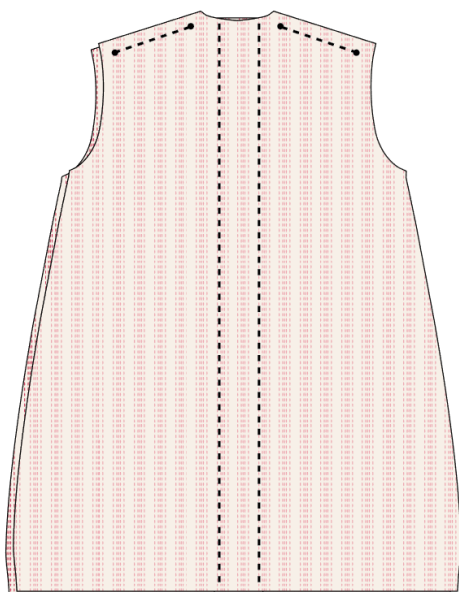
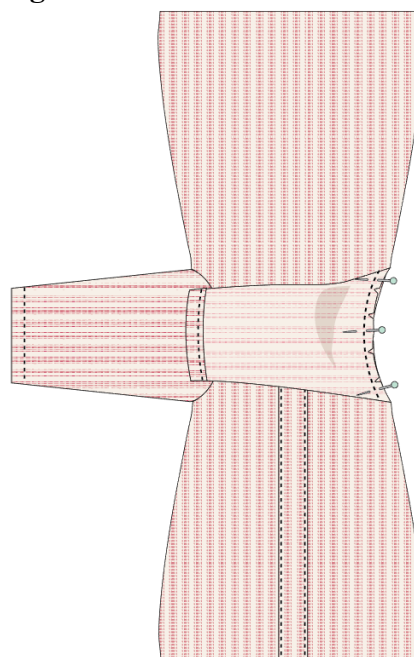


Fig I



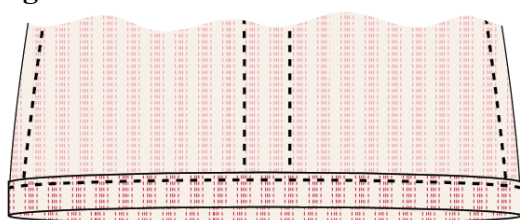
9 Now fold the jacket with sleeves as shown in **Fig J** and machine sew along the open side of the arms and along the jacket sides. Fold up the extra seam allowance around the bottom of

the jacket, press and then machine sew (**Fig K**). Before turning the jacket through to the right side, cut notches in the seam allowance under the arms. Turn through and press the jacket.

Fig J

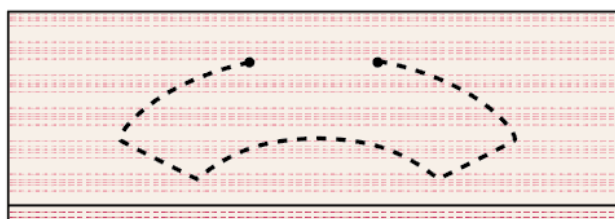


Fig K



10 For the collar, use the remaining piece of Fabric 2. Fold it right sides together, along the long edge, and press. Trace the collar pattern and mark the opening before sewing (**Fig L**). Cut out and turn through with the help of a flower stick or similar tool. Fold in the seam allowance by the opening and press. Hand stitch the opening closed.

Fig L



11 Use the red embroidery yarn (all six strands) to decorate the jacket and pants, sewing running stitches along the edges of the jacket arms and the bottom of the jacket and pants (see photograph of Santa). Sew large cross stitches down the centre panel of the pyjama jacket.

12 Put the pants onto the doll, folding two pleats in the front and back, if necessary, to ensure a snug fit. The pants should sit quite low on the body. Fasten the pants with a few hand stitches (**Fig M**).

13 Put the jacket on the doll. Fold down the raw edge around the neck (most of it will be covered by the collar). Pin the collar around the neck and fasten with a few stitches (**Fig N**).

Fig M

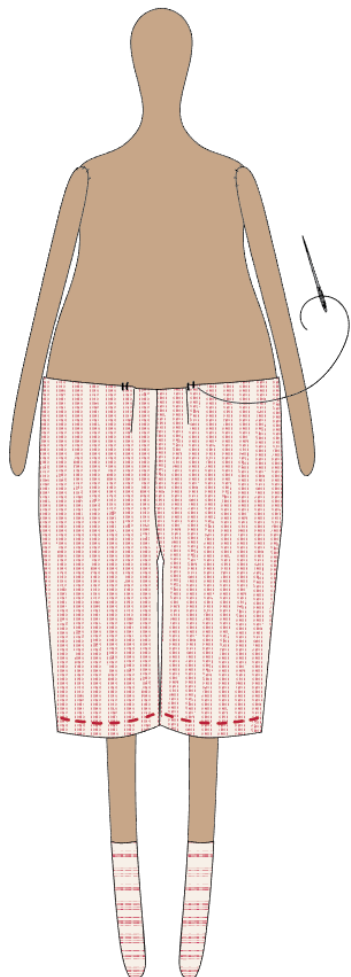


Fig N

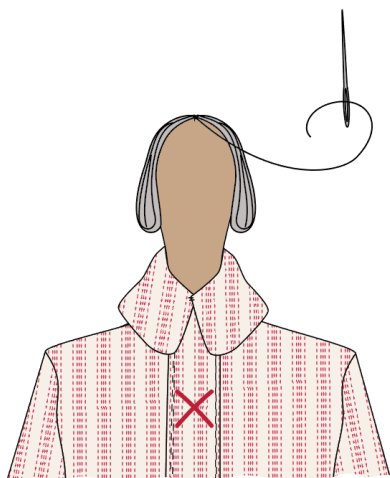


14 Hat and Hair: Fold and press the piece of Fabric 3 right sides together and trace the hat pattern. Sew around and cut out with a small seam allowance. Turn through with the help of a flower stick or similar tool. Fold in and press the extra seam allowance around the opening. Fill the bottom half of the hat with a tiny bit of stuffing to give it some volume.

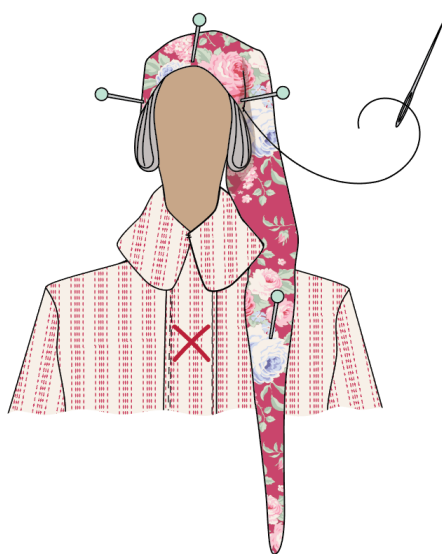
15 Measure from one side of the head, over the head and down the other side to calculate the length of hair you will need. Make a bundle this size from the grey wool yarn (**Fig O**). Attach the middle of the bundle to the middle of the top of the head with a few stitches (**Fig P**).

Fig O



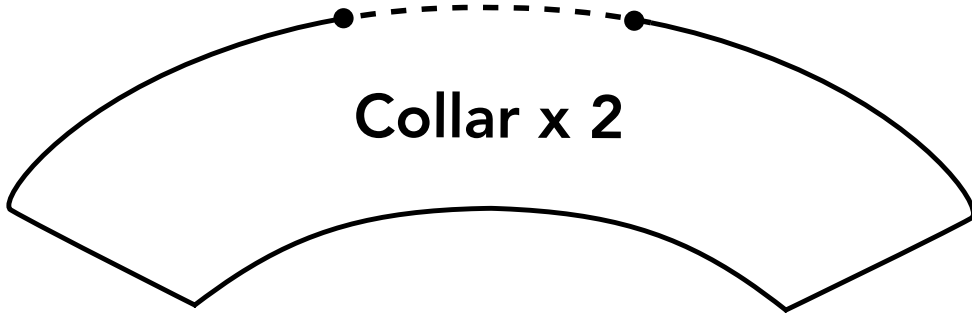
Fig P

16 Pin the hat onto the head over the hair – it should be attached high up on the forehead and low in the neck at the back (**Fig Q**). Pin the top/thinner part of the hat to the front of the jacket to keep it in place (see photograph). Stitch the hat on and then remove the pins.

Fig Q

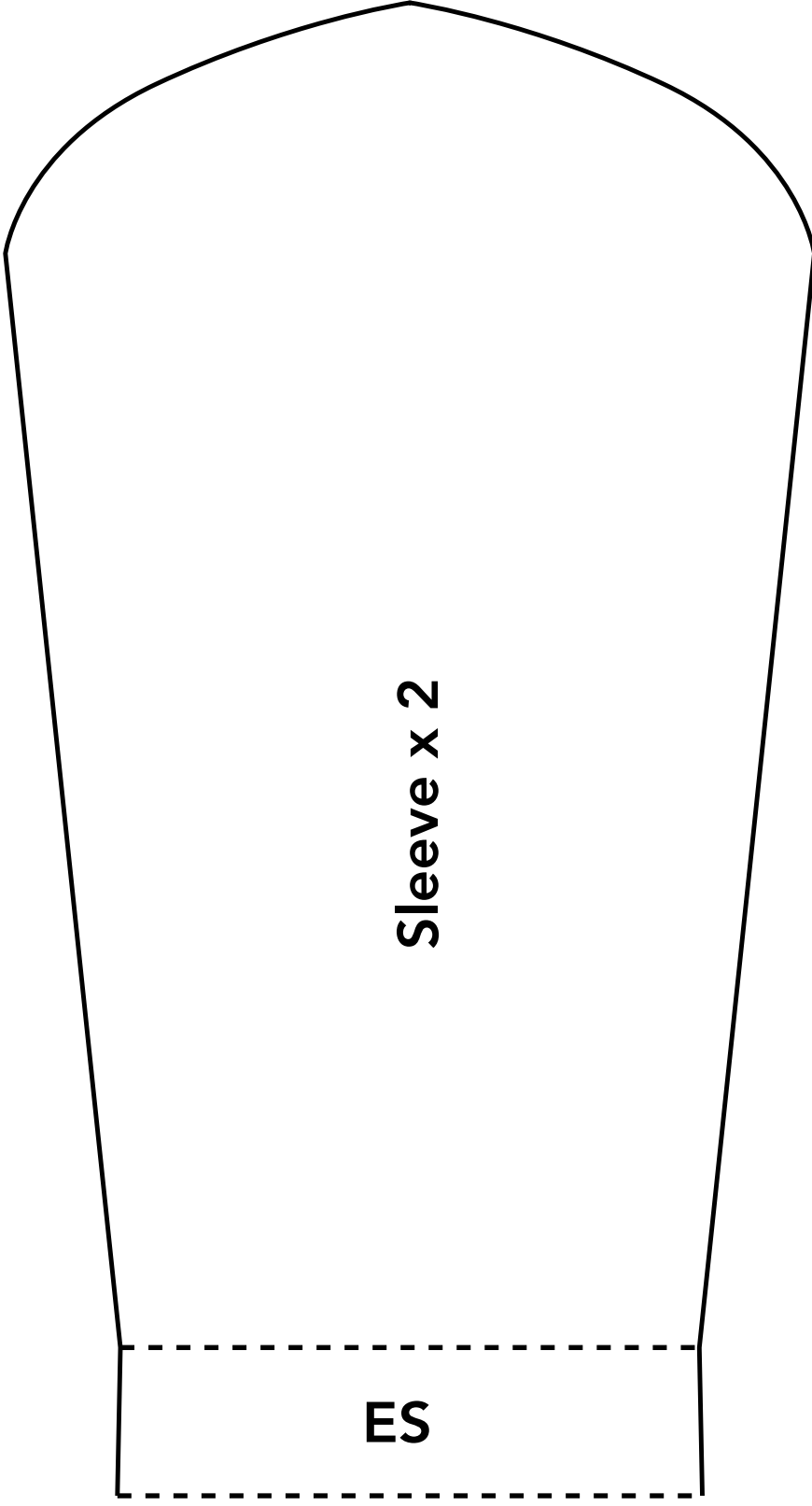
17 To make a face, we suggest using black hobby paint for eyes and a little lipstick or rouge and a dry brush for blushed cheeks. Mark the eyes just with pins first and then apply rosy cheeks with a dry brush and a little rouge or lipstick. Dip the head of a small metal-headed pin in paint and then stamp eyes on the doll to finish.

You will find patterns for printing on the next 5 pages.



ES

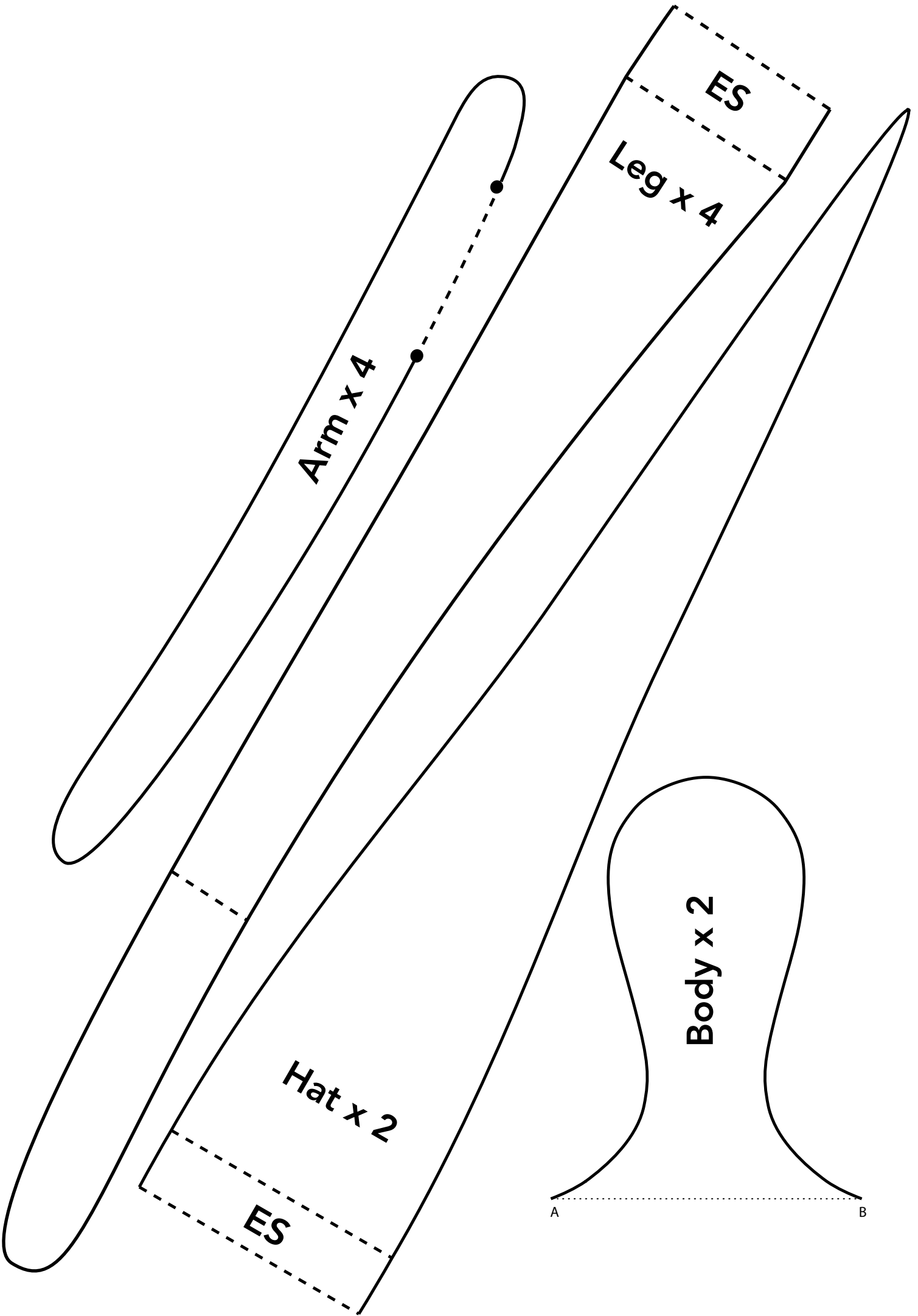
Sleeve x 2



Please check this ruler to ensure that you are printing in 100%. Pages are made in A4.



Edge at the front of the jacket



A

B

Body x 2

Please check this ruler to ensure that you are printing in 100%. Pages are made in A4.



ES

