

Tilda Friends

Frog



Tilda Friends Frog

Height: 50cm (19¾in)

This cut frog is sure to become a firm favourite. Tilda Friends are normally sewn using our Tilda Doll fabrics, but to create green frogs we have chosen to use Tilda Quilt Chambray fabric in Sage or Olive.

You will need

- Tilda Chambray fabric in sage (160011) or olive (160012) 55cm x 65cm (21¾in x 25½in)
- Embroidery yarn in similar colour to skin fabric, for sewing on the arms (optional)
- Fiberfill approximately 180g

We also recommend using the following:

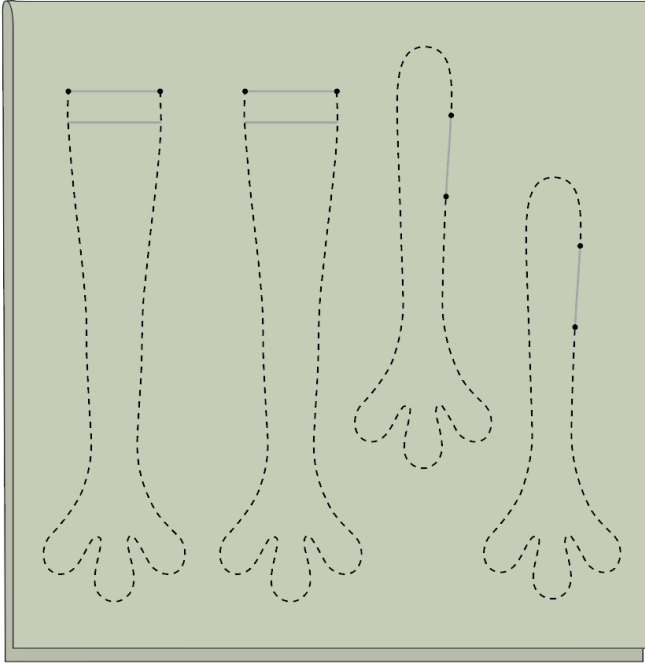
- Sewing machine
- Matching thread and a sewing needle for hand sewing
- Larger needle for embroidery yarn
- Flower stick or chopstick for turning and stuffing
- Thick paper for copying patterns
- Black hobby paint and a small metal-headed pin for eyes
- Soft pink lipstick, rouge or stamp pad, and a dry brush for rosy cheeks

Making the Frog

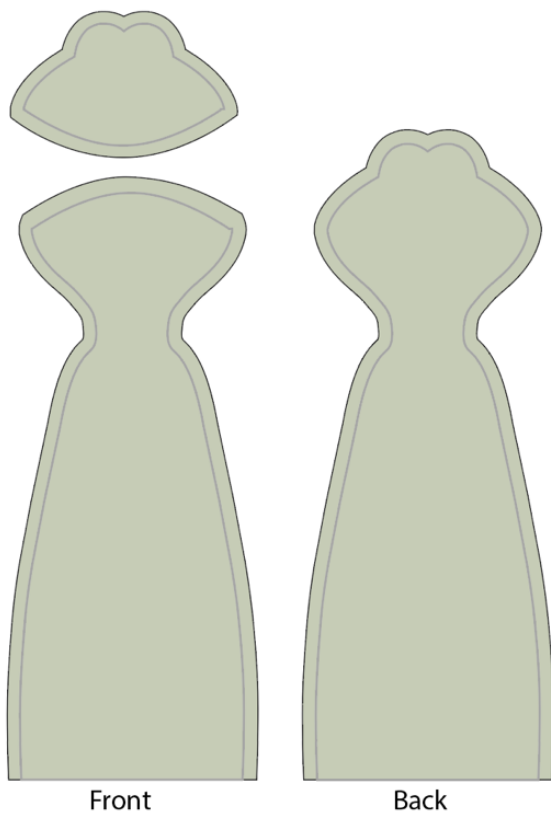
1 Refer to the bullet points below on making the project and read all of the project instructions through before you start.

- We suggest copying or gluing all the pattern pieces onto thick paper and then cutting out the shapes.
- When sewing the seams, reduce your stitch length to 1.5mm–1.6mm.
- Unless otherwise instructed, sew on the outer line of the pattern. Generally, no seam allowances are included in the patterns, *except* for areas marked with ES (extra seam allowance).
- Cut out the shapes after sewing, cutting ⅛in–¼in (3mm–6mm) outside the sewn line, unless otherwise instructed.
- To get a good shape, cut snips in the seam allowance where the seams curve tightly inwards.
- Stuff well, using a stick to fill small areas.
- Sew up openings with matching thread and small slipstitches.

2 Cut a piece of fabric for the arms and legs 12½in (32cm) wide x 25½in (65cm) high. Fold the piece double so it's 12½in (32cm) wide x 12¾in (32.5cm) high and press (**Fig A**). Using the patterns, trace two arms and legs on this folded piece and mark the openings before sewing. Set aside for the moment.

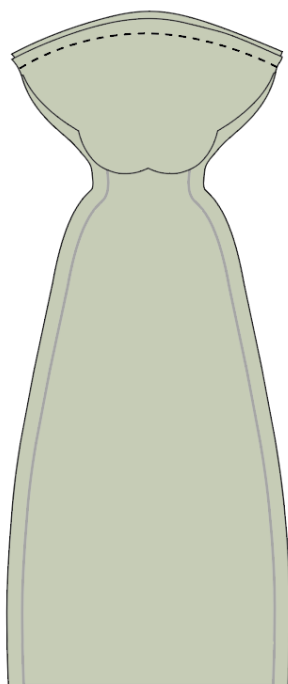
Fig A

3 Using the remainder of the fabric, trace the three pieces for the body (body front, body back and face front) onto the fabric and cut out the shapes with a generous seam allowance (**Fig B**).

Fig B

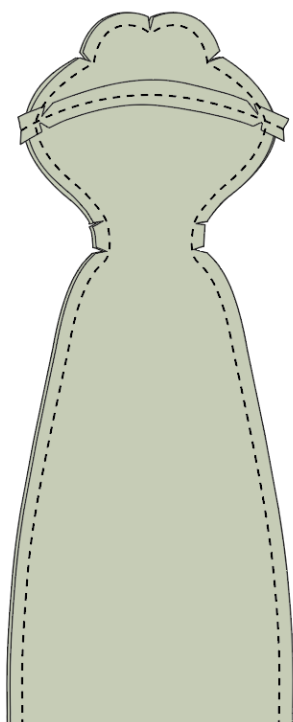
4 Pin the face front piece right sides together with the body front piece and then sew them together along the curved edge (**Fig C**). Open up and press the seam allowance apart (flat).

Fig C



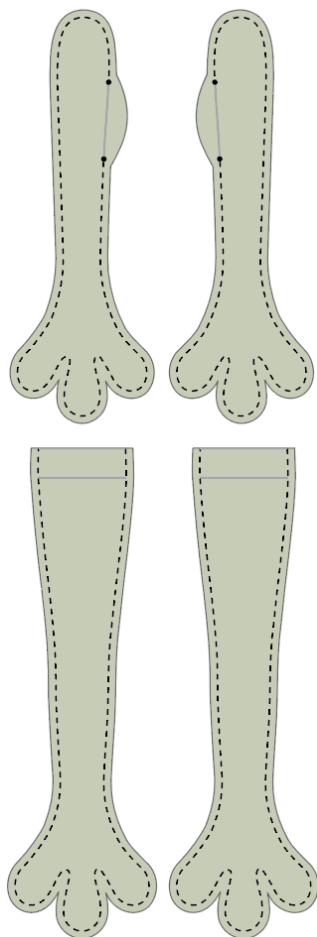
5 Place the front right sides together with the back body piece. Fold the mouth area to one side, so you can easily match up the edges, and then sew around as shown in **Fig D**. Leave the bottom open. Trim down the seam allowance and cut notches where the seams turn inwards and also where the seam allowance on each side of the mouth is caught in the seam, as shown.

Fig D



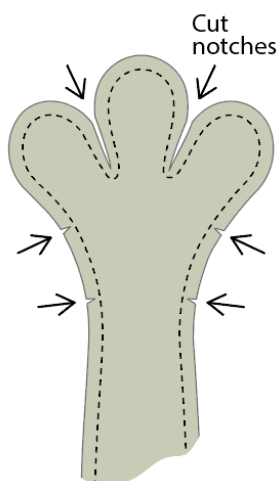
6 Cut out the arms and legs with a small seam allowance, approximately $\frac{1}{8}$ in (4mm), but cut an extra wide seam allowance by the openings on the arms, as shown in **Fig E**.

Fig E



7 To create well shaped hands and feet, carefully cut notches between each finger and where the seam turns in on the sides (**Fig F**). Wiggle the fingers back and forth to loosen the fabric. Sewing a double seam around the details of the hands might help avoid frays and tears.

Fig F



8 Turn all of the parts through to the right side, fold in the extra seam (ES) allowances by the opening on the body and arms but leave the seam allowance on the legs out. When turning thin arms and legs it is helpful to separate the two fabric layers using your thumb and forefinger and then place the blunt end of a flower stick or similar tool against the end of the foot/hand (**Fig G**). Use the stick to push the fabric through the leg/arm and up through and out of the turning opening (**Fig H**). Now pull the rest through the opening and use the stick to push through the top part. Use the wooden stick to wiggle and push each finger into a good shape. Press all of the pieces.

Fig G

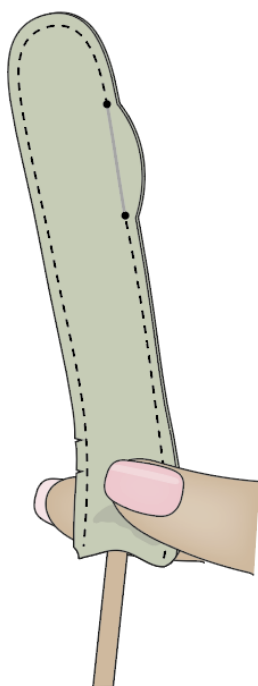
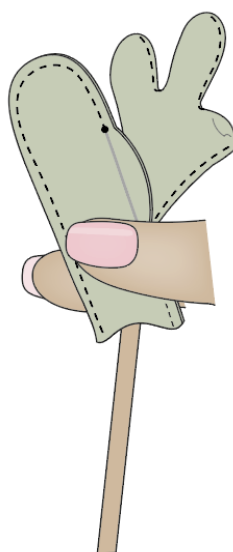
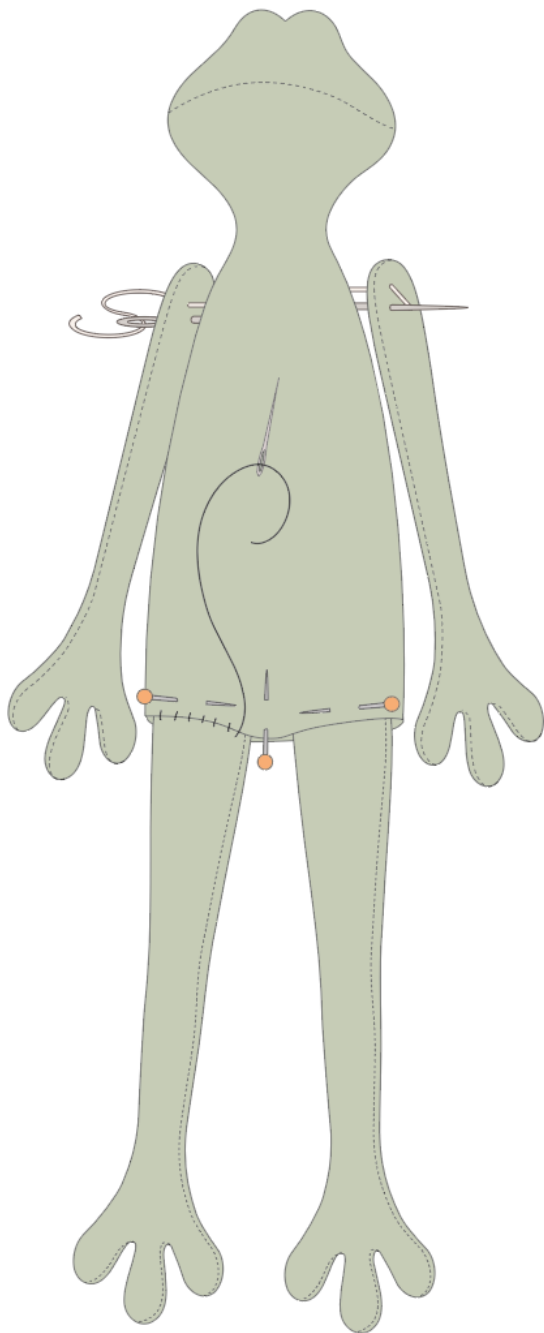


Fig H



9 Stuff the body, arms and legs. When stuffing the arms and legs, start with the fingers and toes, using the flat end of the flower stick to push a little filling at the time into the fingers and toes. Now stuff the rest of the arms and legs. Sew up the openings on the arms but leave the legs open.

10 Sew the arms onto the body using a large needle and matching embroidery yarn or a doubled sewing thread to sew from one arm, right through the body, through the second arm and then back again. Repeat this two or three times to secure the arms tightly to the body (**Fig I**). This will enable them to move easily. Now place the extra seam allowance of the legs inside the body opening and pin. Sew the opening shut while at the same time attaching the legs, as shown in **Fig I**.

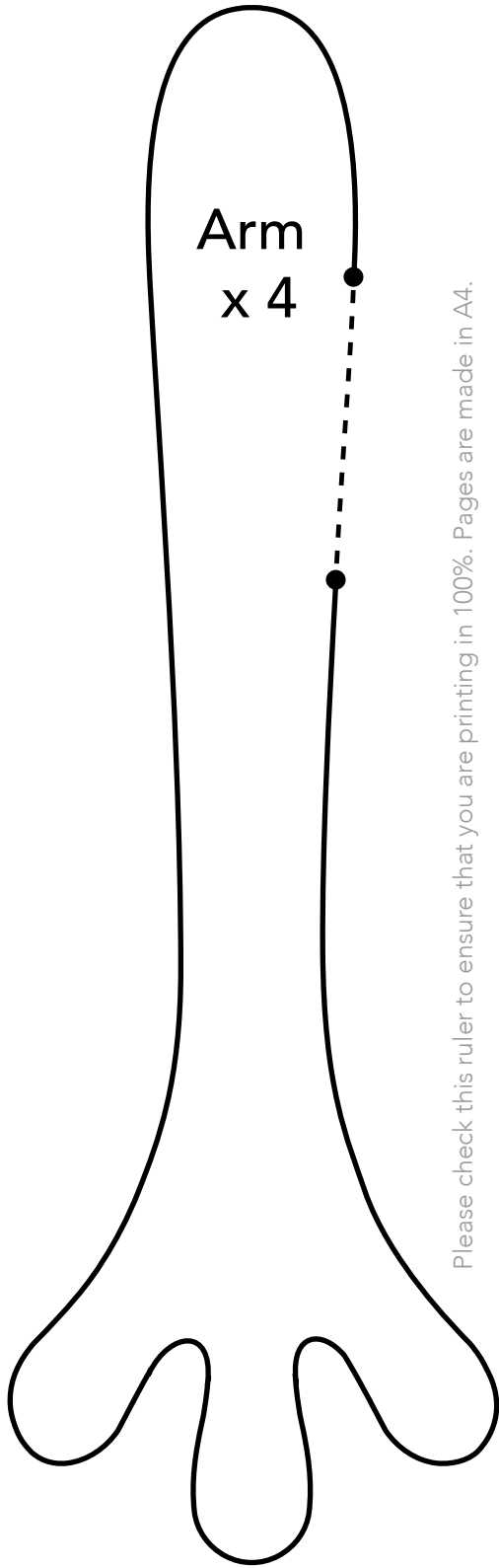
Fig I

11 To finish, stamp eyes onto the face using a metal pin with a small head, dipped in black hobby paint. When the eyes are dry you can create rosy cheeks using lipstick or rouge and a dry brush.

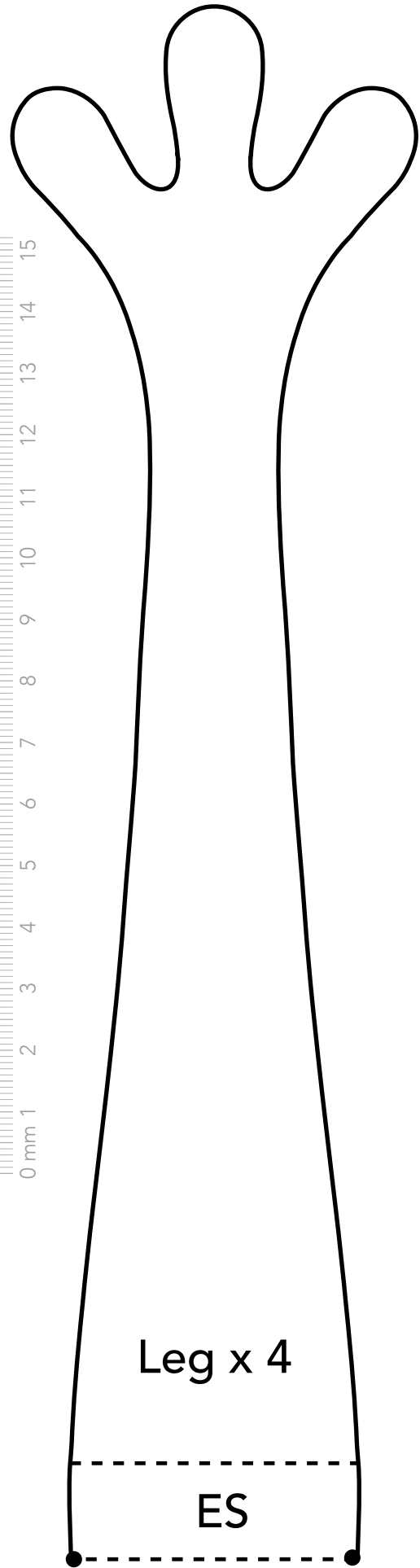
Frog Pattern

Add a seam allowance to all pattern pieces. The edges of the patterns mark the seams. Dotted lines indicate openings and folded edges. ES stands for Extra Seam allowance and appears by openings where it is important to continue the seam to the very end of the seam allowance. This ES is included in the pattern, and where it appears there is no need to add the normal allowance too.

Patterns A4



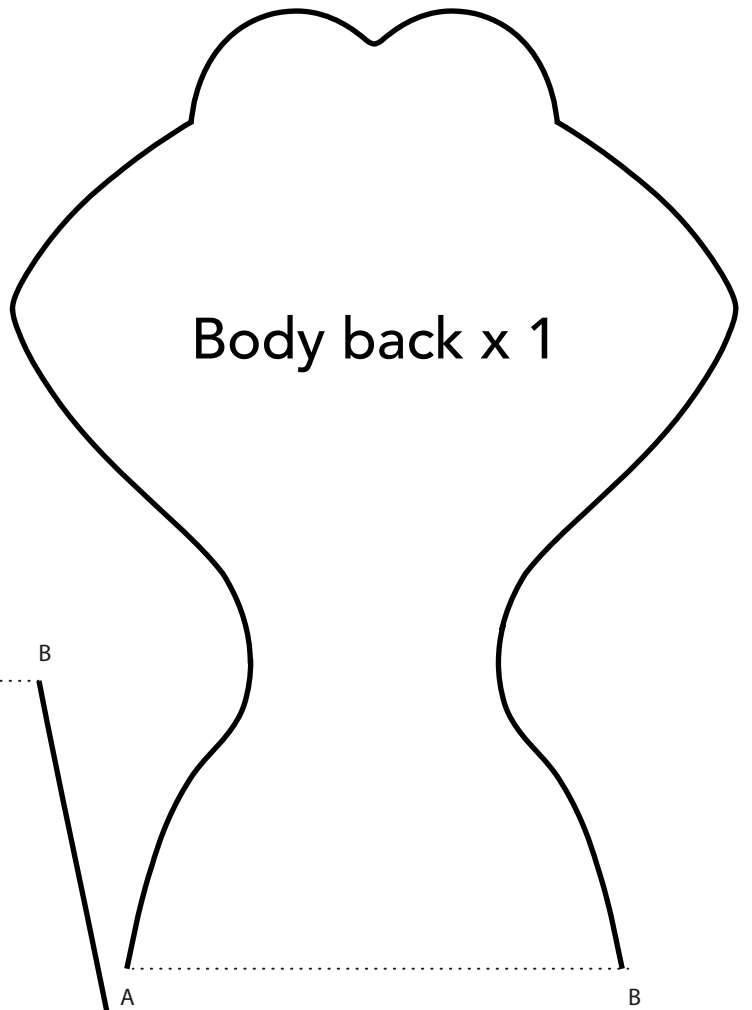
Please check this ruler to ensure that you are printing in 100%. Pages are made in A4.



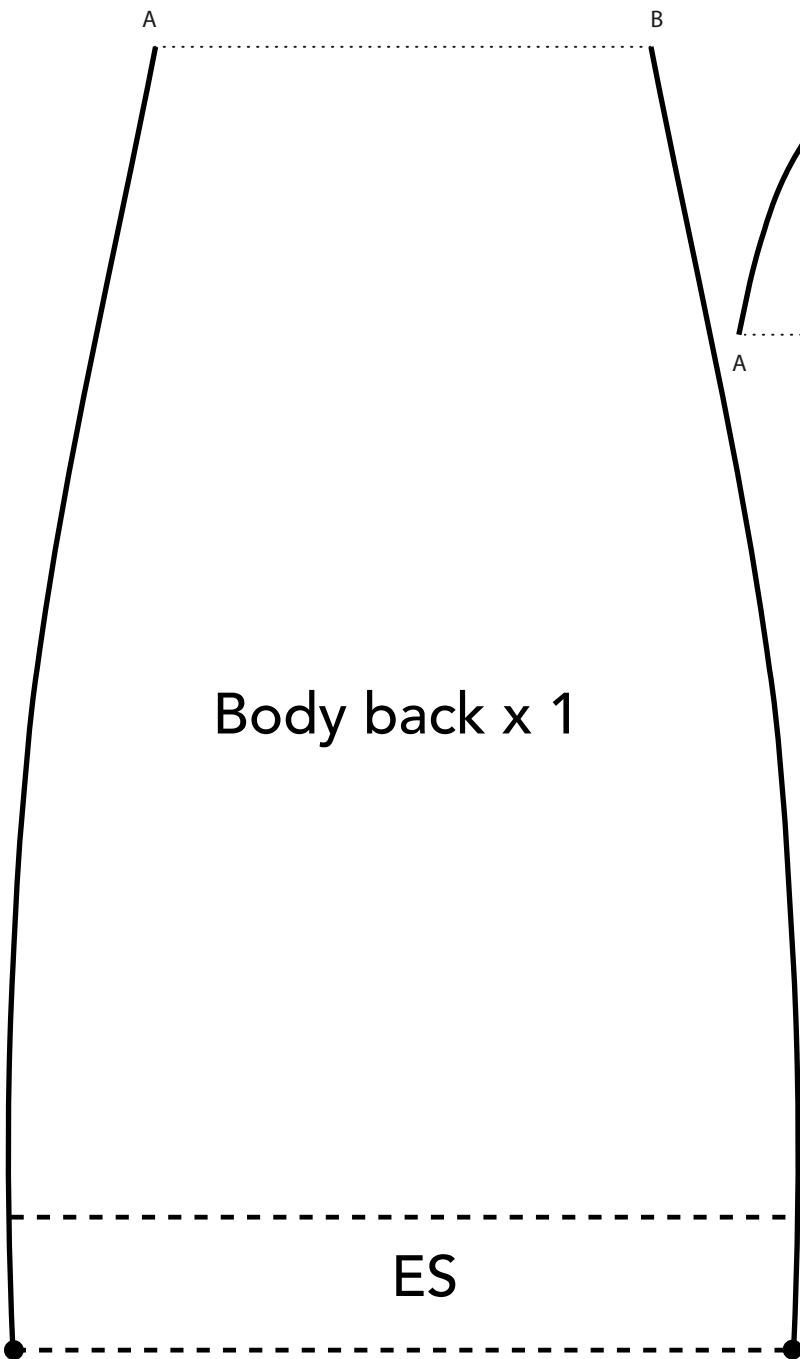
Body front x 1

Face front x 1

ES



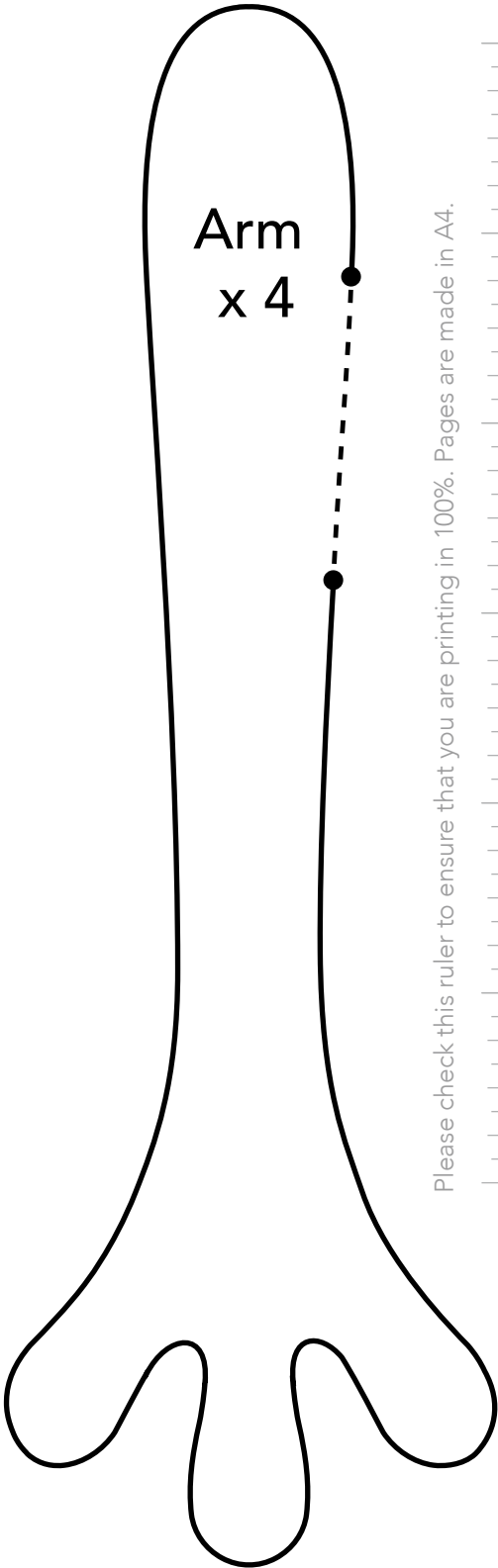
Body back x 1



Body back x 1

ES

Patterns US letter



Please check this ruler to ensure that you are printing in 100%. Pages are made in A4.

