

Tilda®

# Pie in the Sky

Fan Bird  
Pillows



## Fan Bird Pillows

Two pillows featuring sweet bird blocks make a lovely decoration for a room and are also the perfect accompaniment to the Fan Bird Quilt. The bird tails are made with fan patchwork, which looks lovely with the nostalgic atmosphere of the Pie in the Sky and Classic Basics fabrics. The pillow projects are good ones to practise the sewing curved seams needed for the plump body of the bird. The blue/yellow pillow is described in full first, and then the fabric swatches and layout are given for the red/green pillow at the end of these instructions. For the Fan Bird Quilt instructions, see [tildasworld.com](http://tildasworld.com)

Difficulty rating \*\*\*

### Materials (Blue/yellow pillow)

- Fabric 1: 4in x 9in (10cm x 23cm) – Tasselflower mustard (100481)
- Fabric 2: 4in x 9in (10cm x 23cm) – Whimsybird plum (100482)
- Fabric 3: 4in x 9in (10cm x 23cm) – Topsy Turvy plum (100483)
- Fabric 4: 4in x 9in (10cm x 23cm) – Confetti cerise (100484)
- Fabric 5: 4in x 9in (10cm x 23cm) – Willy Nilly mustard (100485)
- Fabric 6: 4in x 9in (10cm x 23cm) – Confetti blue (100486)
- Fabric 7: 4in x 9in (10cm x 23cm) – Willy Nilly teal (100487)
- Fabric 8: 4in x 9in (10cm x 23cm) – Tasselflower blue (100488)
- Fabric 9: 4in x 9in (10cm x 23cm) – Whimsybird blue (100489)
- Fabric 10: 4in x 9in (10cm x 23cm) – Topsy Turvy blue (100490)
- Fabric 11: 4in x 9in (10cm x 23cm) – Cloudpie blue (110068)
- Fabric 12: 4in x 9in (10cm x 23cm) – Cloudpie mustard (110064)
- Fabric 13: One piece 14in x 2in (35.5cm x 5.1cm) – Pen Stripe grey (130033)
- Fabric 14: Fat quarter – Paint Dots grey (130036)
- Fabric 15: One piece 14in x 2in (35.5cm x 5.1cm) – Tiny Star grey (130039)
- Fabric 16: Fat quarter – Crisscross grey (130042)
- Fabric 17: Two 1in (2.5cm) squares – Solid country red (120014)
- Fabric 18: 9in (23cm) square – Solid coral (120016)
- Fabric 19: 5in (12.7cm) square – Solid rust (120017)
- Fabric 20: 5in (12.7cm) square – Solid cornflower blue (120024)
- Fabric 21: 9in (23cm) square – Solid blue sage (120008)
- Wadding (batting): 30in x 17in (76cm x 43cm)
- Lining fabric (optional): 30in x 17in (76cm x 43cm)
- Fabric for back of cover: two pieces each 27½in x 10½in (70cm x 26.7cm) – Willy Nilly mustard (100485)
- Binding fabric: ¼yd (25cm) – Solid cerise (120015)
- Piecing and quilting threads and black embroidery cotton (floss) for French knot eyes
- Quilter's ruler, rotary cutter and mat
- Thin card or template plastic for making patterns (templates)
- Five buttons for fastening (optional) – Pie in the Sky buttons 16mm diameter (400054)
- Pillow pad to fit cover

### Fabric Notes

A fat quarter is assumed to be approximately 21in x 18in (53.3cm x 45.7cm).

## Finished Size

27½in x 15in (70cm x 38cm)

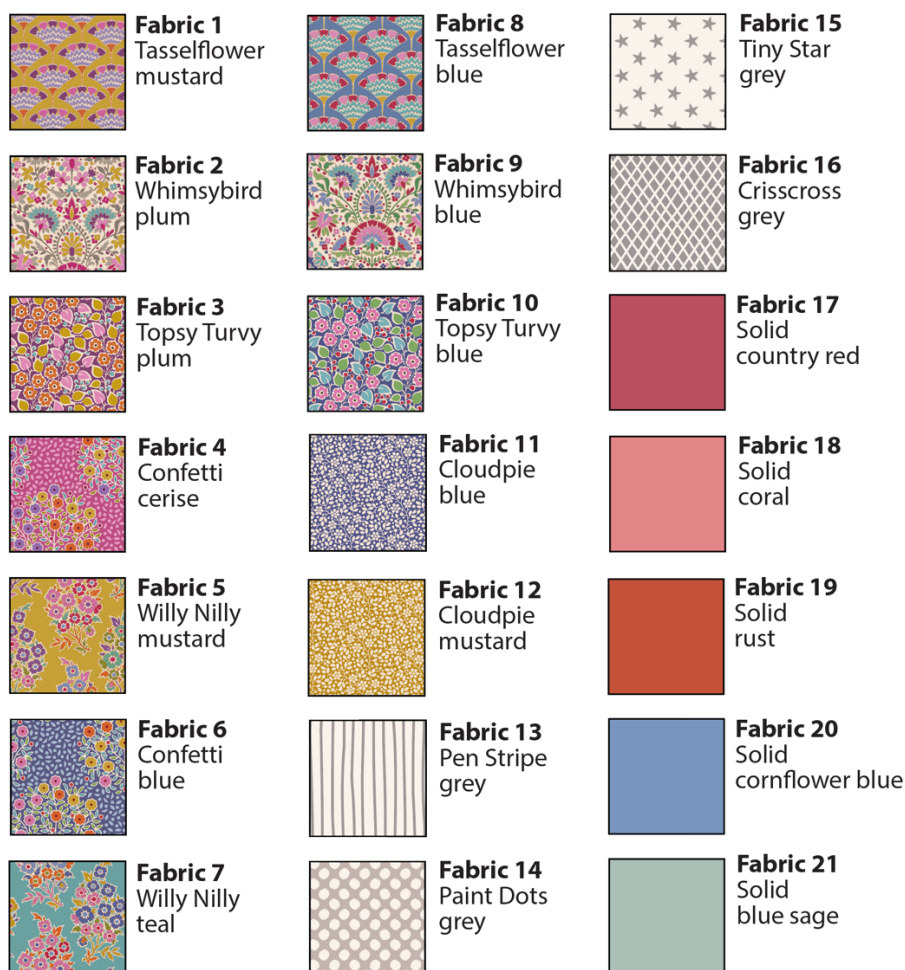
## General Notes

- Fabric quantities are based on a usable width of 42in (107cm), unless otherwise stated.
- Measurements are in imperial inches with metric conversions in brackets – use only *one* system throughout (preferably inches). Width measurements are generally given first.
- Press fabrics before cutting and trim as needed to square up the fabric pattern/weave, using a quilting ruler to cut the top raw edge at 90 degrees to the selvages.
- Use ¼in (6mm) seams unless otherwise instructed.
- Read all the instructions through before you start.
- Always make one complete block as a test before going on to make the remaining blocks.

## Pillow Layout

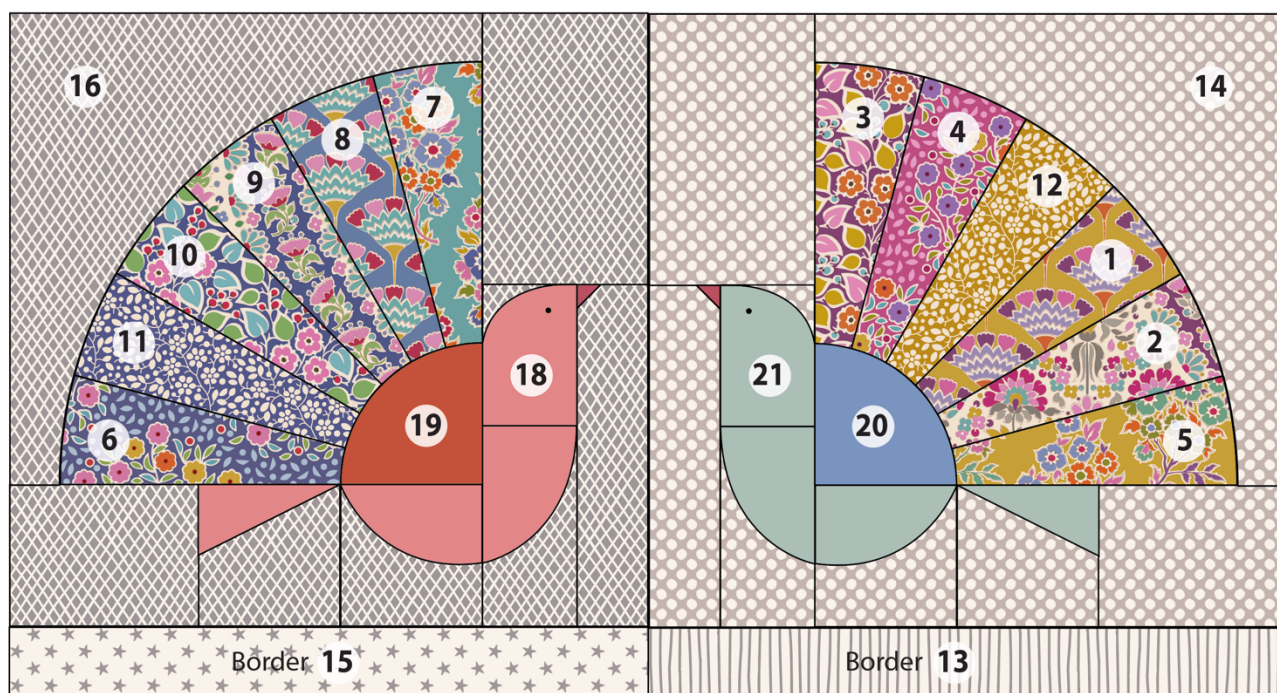
1 The pillow is made up of two Fan Bird blocks, one right facing and one left facing. (These blocks are also included in the Fan Bird Quilt.) A narrow border is added to the bottom of each block. There are various curved units in each block, with shapes cut from the full-size patterns provided (Patterns A, B, C, D, E, F, G, H and I). See **Fig A** for the fabrics used and **Fig B** for the pillow layout and fabric positions.

**Fig A** Fabric swatches (blue/yellow pillow)



**Fig B** Pillow layout and fabric positions

Bird beaks are Fabric 17



## Cutting Out

**2** The blocks use patterns to cut the curved fabric shapes and full-size patterns are provided (Patterns A to I). The patterns include  $\frac{1}{4}$ in (6mm) seam allowances. Make the patterns out of thin card or template plastic so they have some rigidity and will be easy to draw around. Patterns A, B and C are symmetrical, but the others are not, so it's best to mark the shapes on the right side of the fabrics, across the width of the fabric. For the reversed (mirror image) shapes, simply flip the paper pattern over before copying it onto the fabric. Once cut out, check each fabric shape is accurate by placing the pattern back on top. Handle the fabric shapes carefully at all stages, as there are bias edges that may stretch.

**3** When cutting out, refer to **Fig C** for the block layout, pattern positions and the cut measurements, and refer to **Fig B** for the fabrics used and their positions. The cutting for the whole pillow is as follows.

- From Fabric 1 to Fabric 12, cut one of Pattern A. You should have 12 fan blades in total.
- From Fabric 13 and Fabric 15, cut one 14in x 2in (35.5cm x 5.1cm) strip.
- From Fabric 14 and Fabric 16, cut the following pieces.
  - One Pattern C.
  - One Pattern E (see the note with Step 9 *before* you cut fabric for Pattern E).
  - One Pattern F.
  - One Pattern H.
  - One piece **a** – 4in x  $6\frac{1}{4}$ in (10.2cm x 15.9cm).
  - One piece **b** – 2in x  $7\frac{3}{4}$ in (5.1cm x 19.7cm).
  - One piece **d** –  $3\frac{1}{2}$ in (9cm) square.

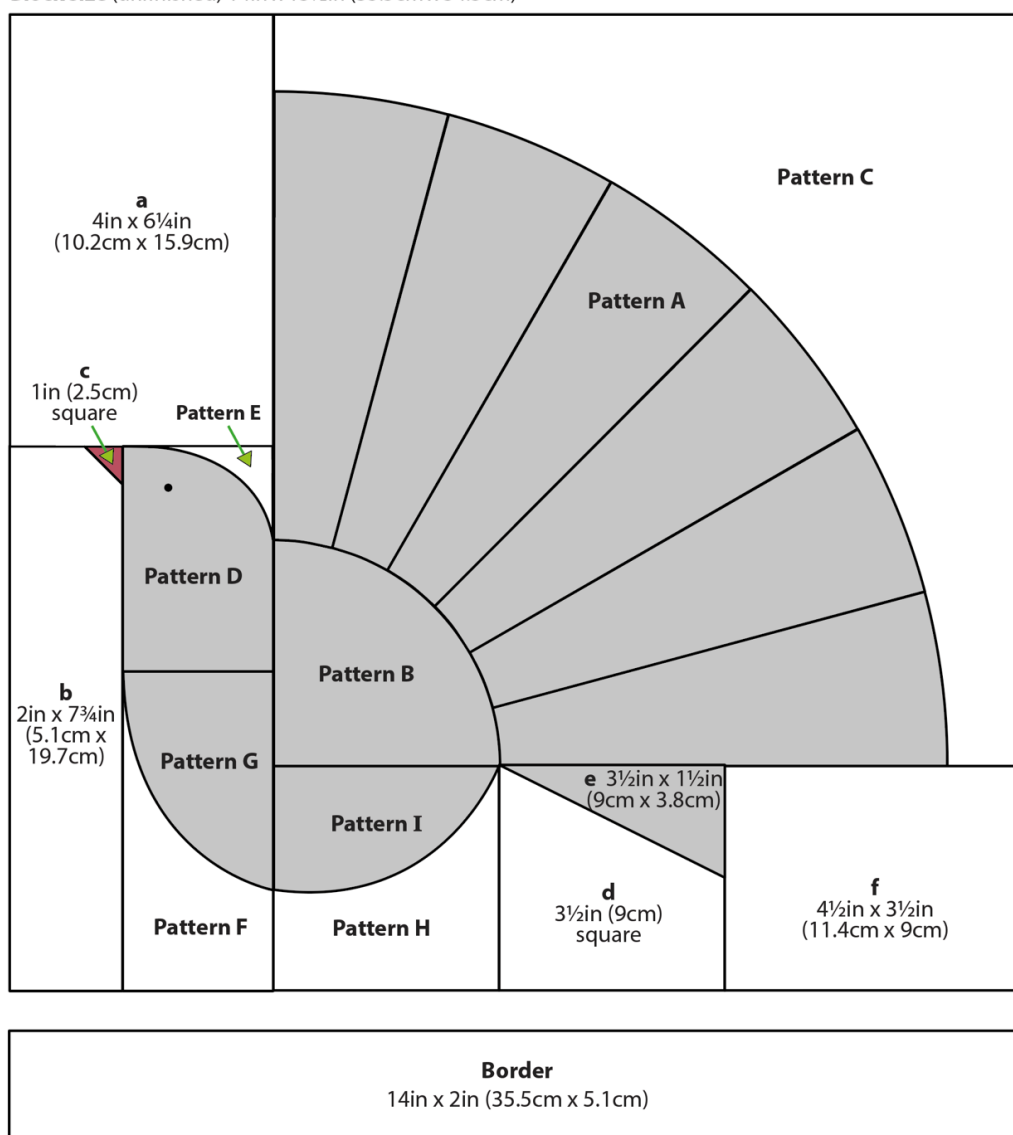
- One piece **f** –  $4\frac{1}{2}\text{in} \times 3\frac{1}{2}\text{in}$  (11.4cm x 9cm).
- From Fabric 17 cut two 1in (2.5cm) squares (**c**), for the birds' beaks.
- From Fabric 18 and Fabric 21 cut the following.
  - One Pattern D.
  - One Pattern G.
  - One Pattern I.
  - One piece **e** –  $3\frac{1}{2}\text{in} \times 1\frac{1}{2}\text{in}$  (9cm x 3.8cm).
- From Fabric 19 and Fabric 20 cut one Pattern B.

**4** Cut the binding fabric into three strips  $2\frac{1}{2}\text{in}$  (6.4cm) x width of fabric. Sew them together end to end and press seams open. Press in half along the length, wrong sides together.

### Fig C Block measurements

To cut the bird pieces, use the relevant full-size patterns where indicated (Patterns A to I)  
Measurements are cut sizes and include  $\frac{1}{4}\text{in}$  (6mm) seam allowances

**Block size** (unfinished)  $14\text{in} \times 13\frac{1}{2}\text{in}$  (35.5cm x 34.3cm)



## Making a Block

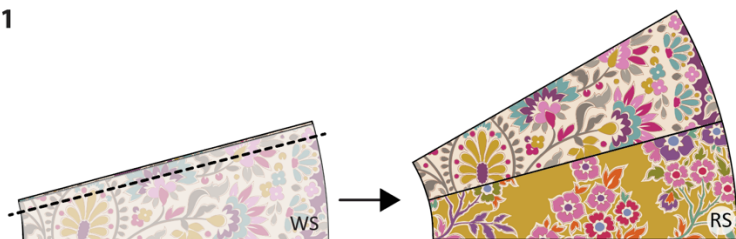
**5** Both blocks have the same construction, with one facing left and one facing right. We will describe the left-facing block in detail.

**Important Note:** before you use the actual fabrics, we urge you to make test units for the bird from any scrap fabrics you have, as sewing curves can be tricky and it's important that the sewn units measure the correct sizes. Follow the cutting and sewing instructions carefully.

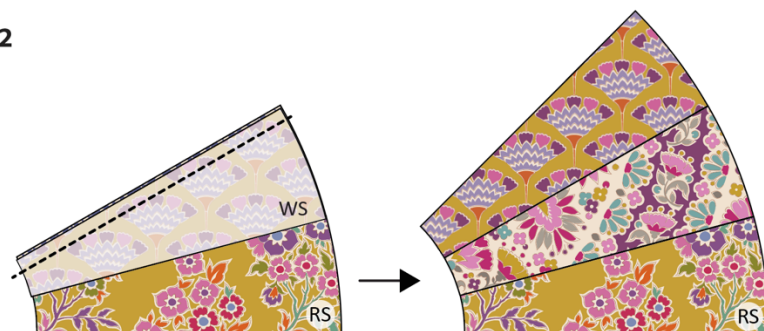
**6** When you are ready to make the actual blocks, begin by laying out the correct pieces for the block. Start by making the fan unit for the tail, following **Fig D**. Place two fan blades right sides together, matching up their edges and sew together with a  $\frac{1}{4}$ in (6mm) seam (**Fig D 1**). Sew the next blade (**Fig D 2**) and continue like this to sew all six blades (**Fig D 3**). Press the seams to one side.

**Fig D** Making the fan

1



2



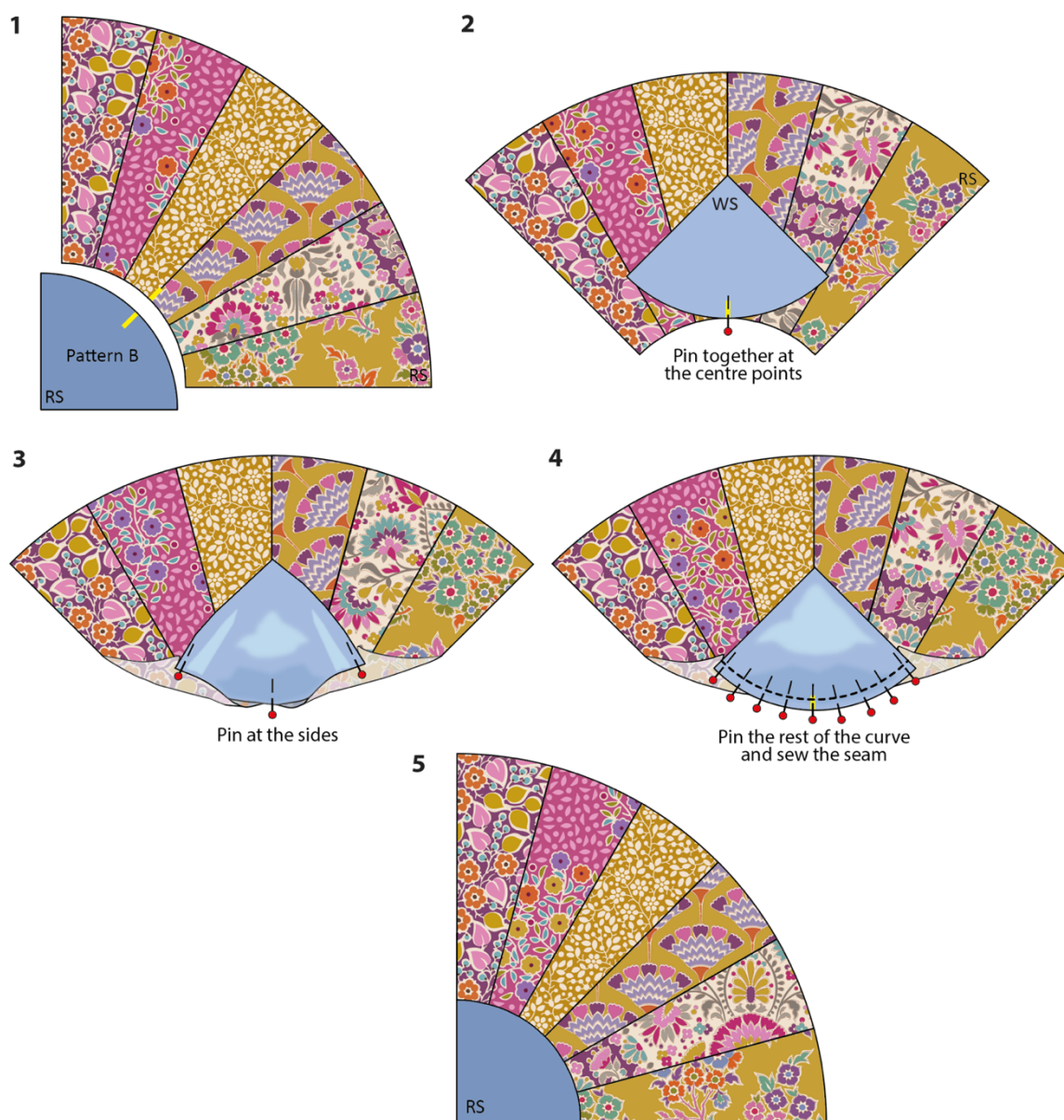
3



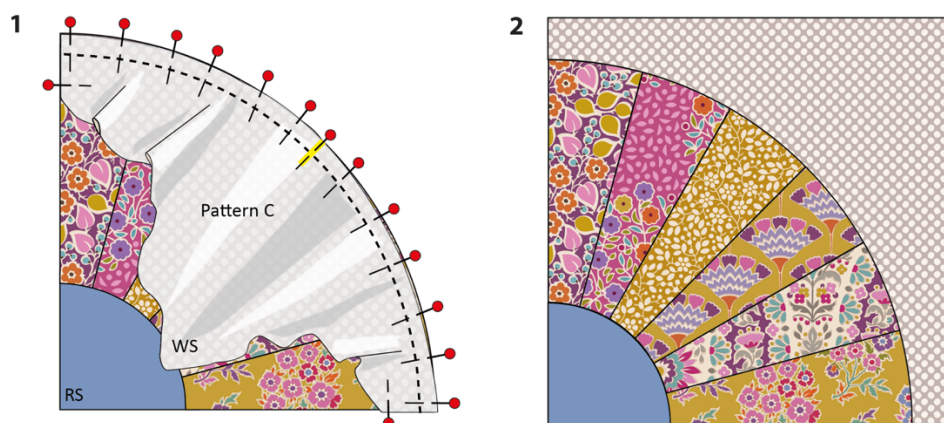
**7** The method of sewing Pattern B to the fan to create the tail unit is described in detail below, and this method of sewing a curved seam can be used for all the curved units. Start by marking or creasing the centre points on the curves of both shapes, as shown by the yellow

lines in **Fig E 1**. Place the pieces right sides (RS) together, aligning the centre marks and pin (**Fig E 2**). Align the outer edges and pin (**Fig E 3**). Now pin the rest of the curves together, checking that the straight edges of piece B are aligned with the straight edges of the fan unit. Once pinned, check that there are no pleats or tucks formed on the back of the work. Sew the seam (**Fig E 4**) and remove the pins. Snip into the seam allowance at intervals using sharp scissors, with cuts about  $\frac{1}{8}$ in (3mm) long. Press the seam towards piece B (**Fig E 5**).

**Fig E** Sewing the tail unit



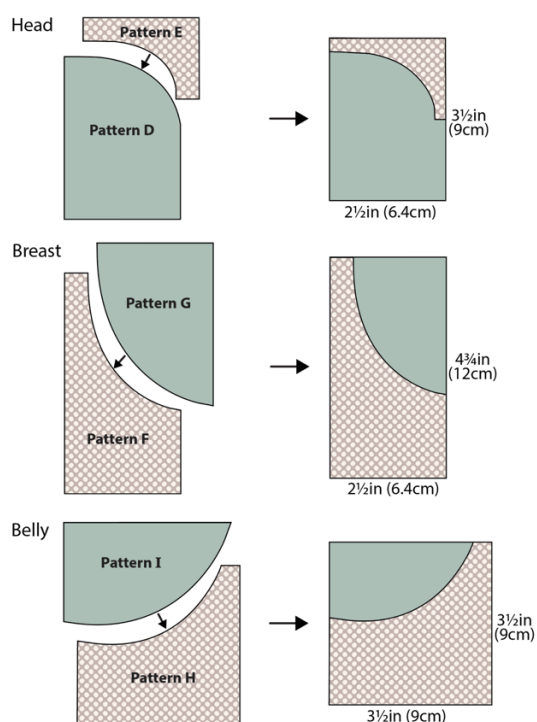
**8** To add the large Pattern C piece, mark or crease the centre points on both curves (you could mark the quarter points too). Place the pieces right sides together, aligning the centre marks, and pin. Align the outer edges and pin. Ease the remaining areas of curved edges together and pin well (**Fig F 1**). Check that there are no pleats or tucks formed on the back of the work. Now sew the seam. Remove the pins and snip into the seam allowance, as before. Press the seam towards piece C (**Fig F 2**). Check the sewn unit is  $10\frac{1}{2}$ in (26.7cm) square.

**Fig F** Adding the background curve

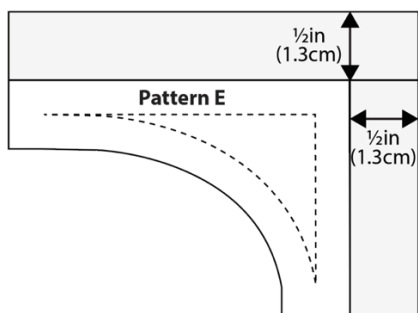
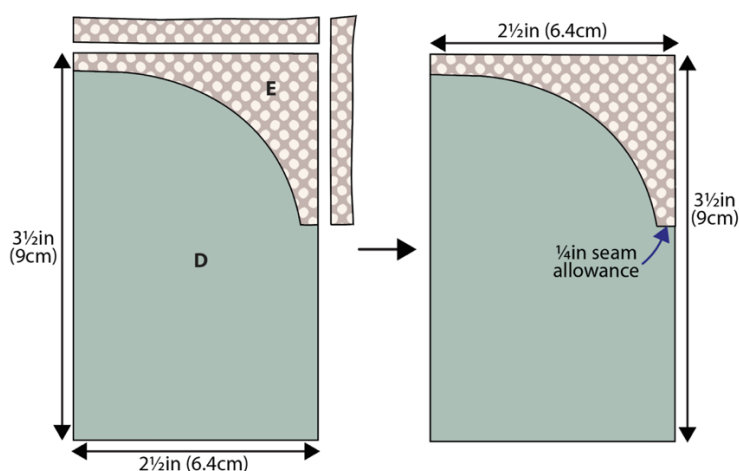
**9** Make the other curved units for the block using the same method as for the A/B/C unit, but for these bird head, breast and belly units sew the seams using *scant*  $\frac{1}{4}$ in (5mm) seams. (A scant seam is one or two needle's width narrower than a normal seam.) **Fig G** shows the units needed. We suggest you sew the F and G pieces first and then the H and I pieces, leaving the D and E pieces until last because this unit is more tricky.

**Note:** Pattern E is small and rather fiddly to sew to Pattern D and if you are inexperienced with curved sewing and have difficulty creating an accurate result, the unit can be made easier to sew by increasing the size of the two sides edges, as shown in **Fig H**. Use a quilting ruler to add  $\frac{1}{2}$ in (1.3cm) to the two long, straight sides. Cut your fabric piece using this amended pattern. Sew the curve of fabric piece E to the curve of piece D and once sewn and pressed, cut off the excess of fabric E by trimming the unit to  $2\frac{1}{2}$ in x  $3\frac{1}{2}$ in (6.4cm x 9cm), as in **Fig I**. Notice that piece E has allowances for  $\frac{1}{4}$ in (6mm) seams.

**10** Once the curved units are sewn, check they are the correct sizes, as shown in **Fig G**.

**Fig G** Sewing the curved units



**Fig H** Amending Pattern E if required**Fig I** Trimming unit D/E to the correct size

**11** To make the lower tail unit, a long triangle (**e**) has to be created along the top edge of the square (**d**). Follow the stages of **Fig J** carefully. Start by marking the  $\frac{1}{4}$ in (6mm) seam allowances and dots at the corners, on the right side of the background square and the wrong side of the solid fabric rectangle (or you can just mark the dots) – see the **Tip**, below. On the solid rectangle, mark a diagonal line from corner to corner of the seam allowance in the direction shown in **Fig J 1** (note that the line is through the seam allowance dots, *not* through the outer corners of the fabric). Now place the fabrics right sides together, angling the rectangle so the two dots on the diagonal line match the dots on the fabric beneath (**Fig J 2**). Be precise in the alignment of the dots, pinning in place carefully and then sew along the diagonal line right to the edges of the fabric (see the dashed line in **Fig J 2**). Press the triangle outwards (**Fig J 3**). Trim excess fabric  $\frac{1}{4}$ in (6mm) from the sewn line. Check the sewn unit is  $3\frac{1}{2}$ in (9cm) square.

**12** Making a reversed lower tail unit is shown in **Fig K**, so follow this diagram when you are making the reversed block.

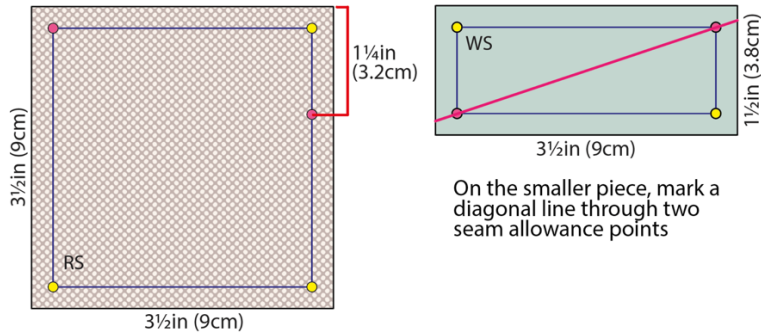
### **Tip**

When marking the seam allowances, use a marker that will show clearly on the fabric you are using, for example a chalk pen might be needed on darker prints. Use a removable or erasable marker when marking on the right side of the fabrics, so the marks can be easily removed later. Marking just dots at the seam allowance corners will mean that there is less marking to remove later.

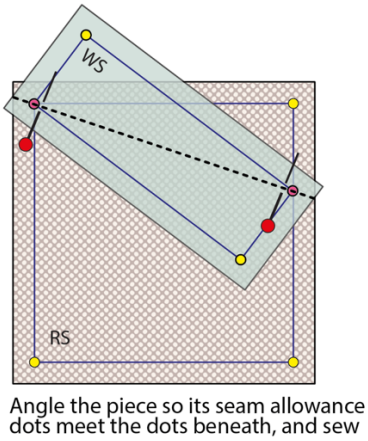
## Fig J Making the lower tail unit

1

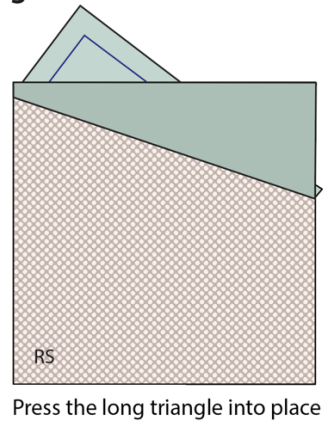
Mark  $\frac{1}{4}$ in (6mm) seam allowances on both pieces with a removable marker and then measure and mark dots where shown



2

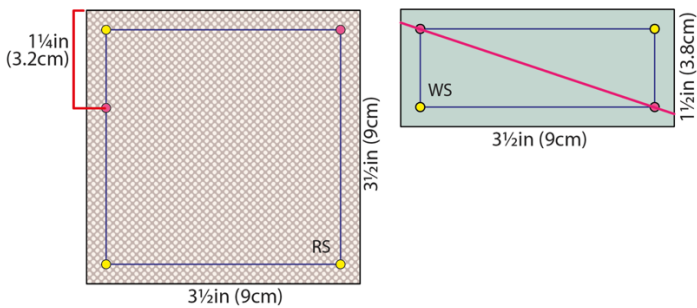


3

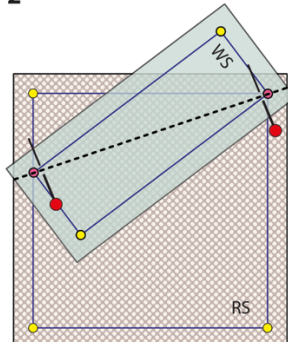


## Fig K Making a reversed lower tail unit

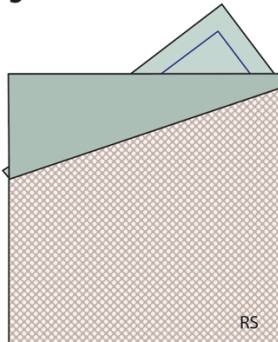
1



2

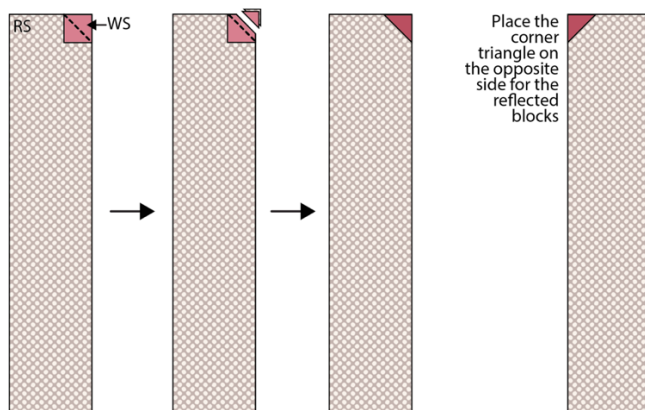


3



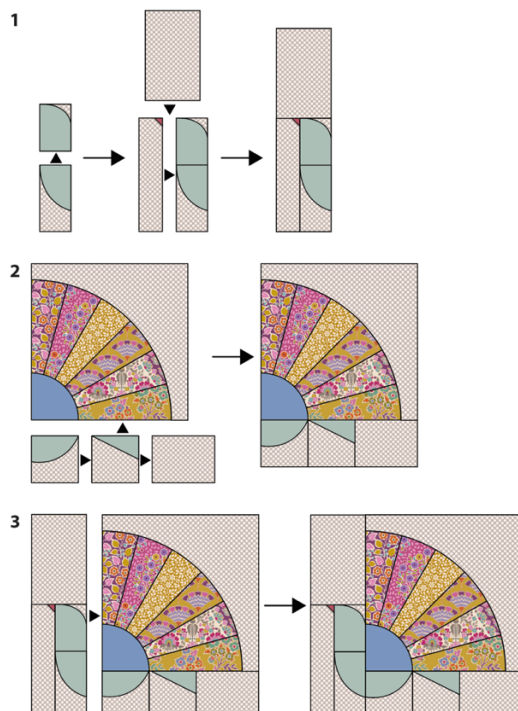
**13** To make the beak unit, a triangle corner is created at the top of piece **b**. Following **Fig L**, take the rectangle and place it right side up. Take a 1in (2.5cm) square of Fabric 17 and pencil mark a diagonal line on the wrong side. Place the square right sides together with the rectangle, aligning the edges and with the marked line in the direction shown in the diagram. Sew along the marked line. Trim off excess fabric  $\frac{1}{4}$ in (6mm) past the sewn line and press the triangle outwards. Check the unit is 2in x  $7\frac{3}{4}$ in (5.1cm x 19.7cm). The final part of the **Fig L** diagram shows the positioning of the square when making the reversed block.

**Fig L** Sewing the beak unit



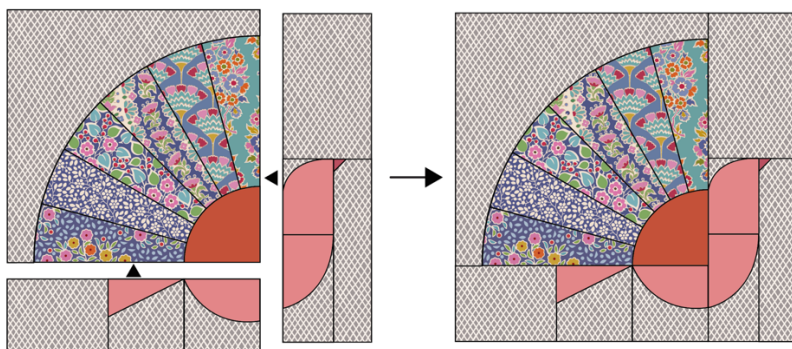
**14** To assemble the block, take all the units, plus the unpieced rectangles (**a** and **f**) and follow **Fig M**, beginning with the head and breast, sewing the pieces together with normal  $\frac{1}{4}$ in (6mm) seams (**Fig M 1**) and pressing after each seam. Next, sew the three units together under the fan tail unit and then sew these to the fan tail (**Fig M 2**). Now sew the two sections together (**Fig M 3**). Check that the block is 14in x  $13\frac{1}{2}$ in (35.5cm x 34.3cm).

**Fig M** Assembling the block



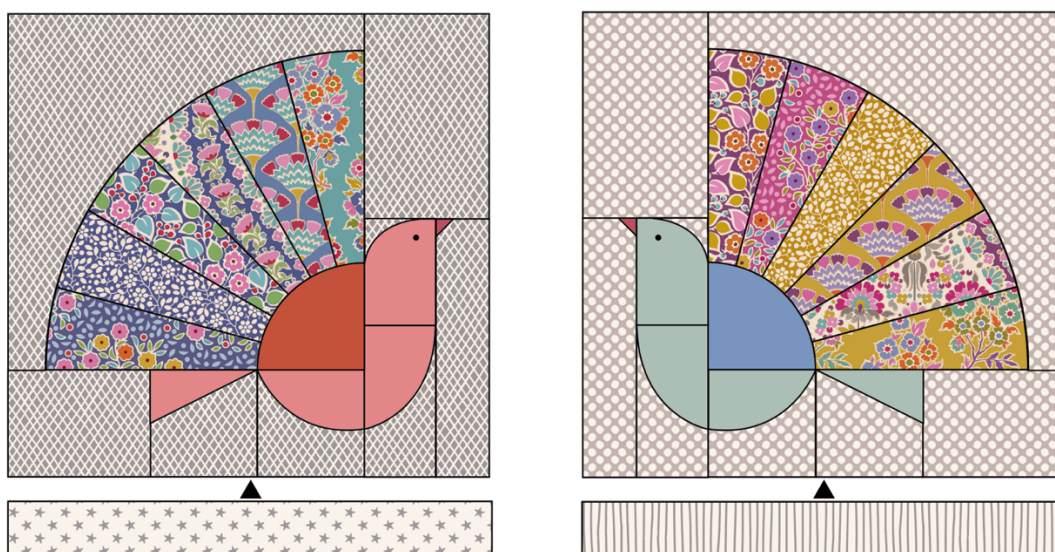
**15** Repeat the block-making process to make the reflected block. Refer back to **Fig B** for the colourways and fabric placement for the block. The assembly stages are shown in **Fig N**. Once made, check the second block is 14in x 13½in (35.5cm x 34.3cm).

**Fig N** Assembling the reflected block



**16** When the two blocks are made, sew a border piece to the bottom of each block and press the seam towards the border (**Fig O**). Finally, embroider an eye on each bird using six strands of black stranded cotton and working French knots with the yarn wrapped twice around the needle.

**Fig O** Adding the borders and the French knot eye



## Quilting and Finishing

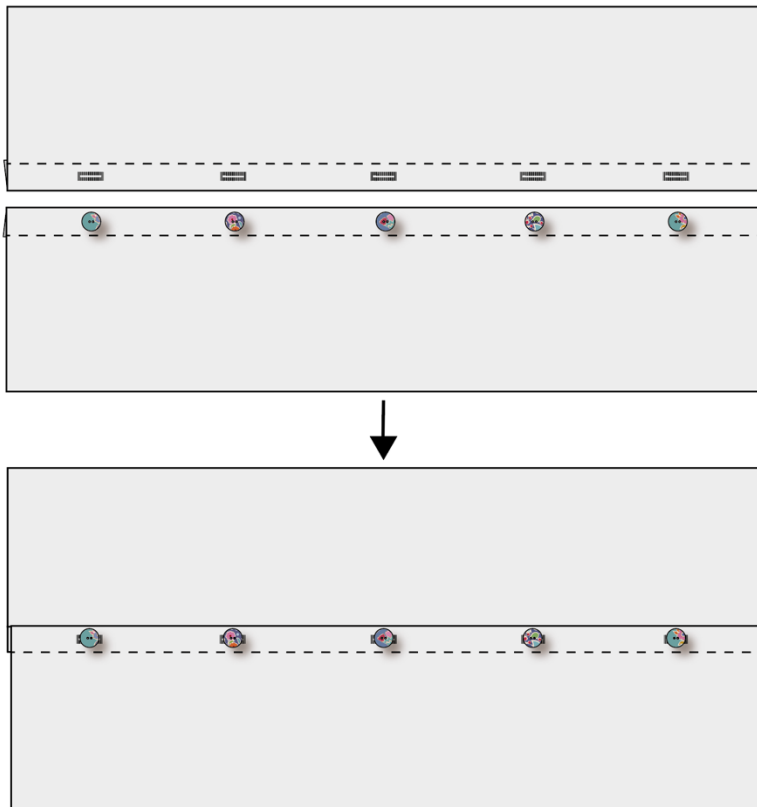
**17** Make a quilt sandwich of the patchwork, wadding (batting) and lining fabric (if using). Quilt as desired. Trim off excess wadding and lining fabric to match the patchwork size.

**18** To make up the pillow cover, take the two pieces of fabric for the pillow back and on one long edge of each piece, create a hem by turning the edge over by 1in (2.5cm), twice. Sew the seams with matching thread and press (**Fig P**). The diagram is shown in greys, so you can use the Tilda fabric and buttons suggested in the Materials list, or those of your choice.

**19** For the fastening, using your sewing machine, create five equally spaced buttonholes within the hem of one of the pieces. Sew five buttons onto the other piece, matching their positions to the buttonholes. Note: Instead of making buttonholes, you could use a hook and loop fastening, such as Velcro, to fasten the cover and then sew on the buttons as a decorative feature.

**20** The pillow has a bound edge, so the pieces are assembled with right sides out, as follows. Place the quilted patchwork right side down. On the backing, fasten the buttons into the buttonholes and then place the whole piece on top of the patchwork, right side up. Check it is the same size as the patchwork, trimming any raw edges if need be. Make sure the outer edges of all pieces are aligned. Pin or tack (baste) the layers together and then bind as normal. As you sew the binding in place it will fix the other layers together. Press the cover and insert a pillow pad to finish.

**Fig P** Making up the cover



## Fan Bird Pillow

(Red/green colourway)

This version of the pillow uses the same layout as the blue/yellow pillow but with different fabrics. The two blocks of this pillow also feature in the Fan Bird Quilt. Use the Materials list given below.

### Materials (Red/green pillow)

- Fabric 1: 4in x 9in (10cm x 23cm) – Topsy Turvy pine (100499)
- Fabric 2: 4in x 9in (10cm x 23cm) – Cloudpie green (110070)
- Fabric 3: 4in x 9in (10cm x 23cm) – Willy Nilly green (100496)
- Fabric 4: 4in x 9in (10cm x 23cm) – Confetti pine (100500)
- Fabric 5: 4in x 9in (10cm x 23cm) – Tasselflower green (100497)
- Fabric 6: 4in x 9in (10cm x 23cm) – Topsy Turvy red (100492)
- Fabric 7: 4in x 9in (10cm x 23cm) – Confetti red (100493)
- Fabric 8: 4in x 9in (10cm x 23cm) – Whimsybird red (100491)
- Fabric 9: 4in x 9in (10cm x 23cm) – Tasselflower red (100495)
- Fabric 10: 4in x 9in (10cm x 23cm) – Cloudpie pink (110065)
- Fabric 11: 4in x 9in (10cm x 23cm) – Willy Nilly pink (100494)
- Fabric 12: 4in x 9in (10cm x 23cm) – Whimsybird pine (100498)
- Fabric 13: One piece 14in x 2in (35.5cm x 5.1cm) – Crisscross grey (130042)
- Fabric 14: Fat quarter – Pen Stripe grey (130033)
- Fabric 15: One piece 14in x 2in (35.5cm x 5.1cm) – Paint Dots grey (130036)
- Fabric 16: Fat quarter – Tiny Star grey (130039)
- Fabric 17: Two 1in (2.5cm) squares – Solid country red (120014)
- Fabric 18: 9in (23cm) square – Solid lime green (120028)
- Fabric 19: 5in (12.7cm) square – Solid moss (120038)
- Fabric 20: 5in (12.7cm) square – Solid ginger (120018)
- Fabric 21: 9in (23cm) square – Solid pink (120026)
- Wadding (batting): 30in x 17in (76cm x 43cm)
- Lining fabric (optional): 30in x 17in (76cm x 43cm)
- Fabric for back of cover: two pieces each 27½in x 10½in (70cm x 26.7cm) – Willy Nilly pink (100494)
- Binding fabric: ¼yd (25cm) – Solid dusty teal (120043)
- Piecing and quilting threads and black embroidery cotton (floss) for French knot eyes
- Quilter's ruler, rotary cutter and mat
- Thin card or template plastic for making patterns (templates)
- Five buttons for fastening (optional) – Pie in the Sky buttons 18mm diameter (400053)
- Pillow pad to fit cover

### Fabric Notes

A fat quarter is assumed to be approximately 21in x 18in (53.3cm x 45.7cm).

### Finished Size

27½in x 15in (70cm x 38cm)

## General Notes

- Fabric quantities are based on a usable width of 42in (107cm), unless otherwise stated.
- Measurements are in imperial inches with metric conversions in brackets – use only *one* system throughout (preferably inches). Width measurements are generally given first.
- Press fabrics before cutting and trim as needed to square up the fabric pattern/weave, using a quilting ruler to cut the top raw edge at 90 degrees to the selvages.
- Use ¼in (6mm) seams unless otherwise instructed.
- Read all the instructions through before you start.
- Always make one complete block as a test before going on to make the remaining blocks.

## Pillow Layout

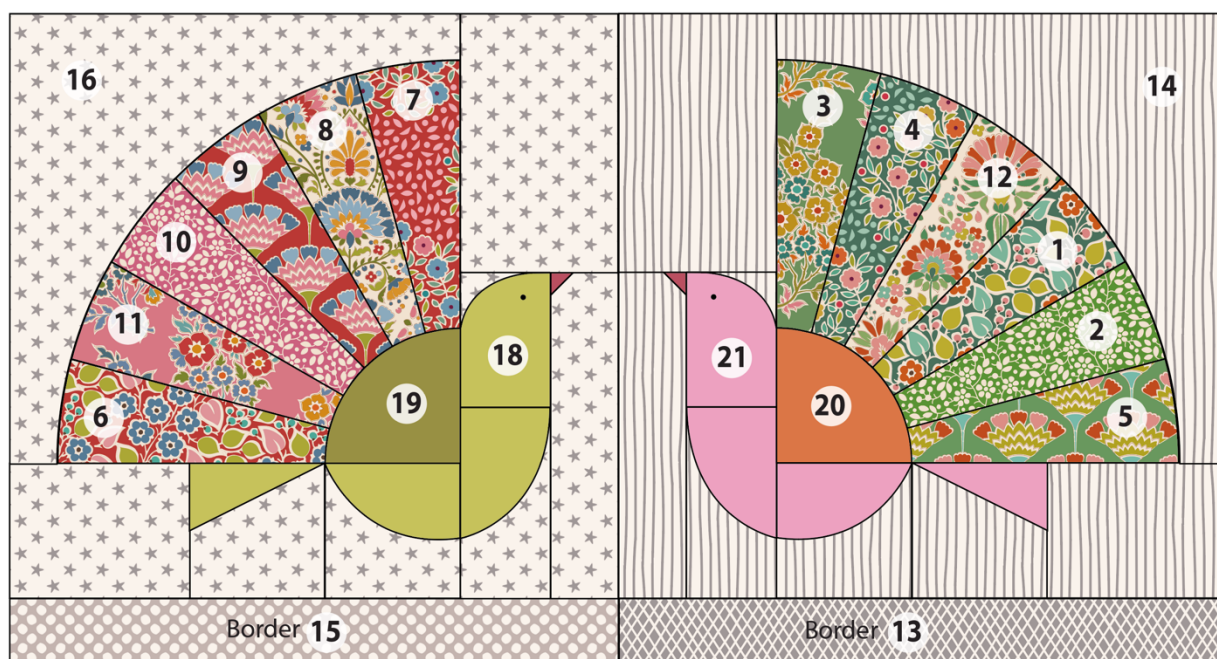
1 The pillow is made up of two Fan Bird blocks, one right facing and one left facing. These blocks are also included in the Fan Bird Quilt. A narrow border is added to the bottom of each block. There are various curved units in each block, with shapes cut from the full-size patterns provided (Patterns A, B, C, D, E, F, G, H and I). See **Fig A** for the fabrics used and **Fig B** for the pillow layout and fabric positions.

**Fig A** Fabric swatches (red/green pillow)



**Fig B** Pillow layout and fabric positions

Bird beaks are Fabric 17



## Cutting Out

**2** The blocks use patterns to cut the curved fabric shapes and full-size patterns are provided (Patterns A to I). The patterns include  $\frac{1}{4}$ in (6mm) seam allowances. Make the patterns out of thin card or template plastic so they have some rigidity and will be easy to draw around. Patterns A, B and C are symmetrical, but the others are not, so it's best to mark the shapes on the right side of the fabrics, across the width of the fabric. For the reversed (mirror image) shapes, simply flip the paper pattern over before copying it onto the fabric. Once cut out, check each fabric shape is accurate by placing the pattern back on top. Handle the fabric shapes carefully at all stages, as there are bias edges that may stretch.

**3** When cutting out, refer to **Fig C** for the block layout, pattern positions and the cut measurements, and refer to **Fig B** for the fabrics used and their positions. The cutting for the whole pillow is as follows.

- From Fabric 1 to Fabric 12, cut one of Pattern A. You should have 12 fan blades in total.
- From Fabric 13 and Fabric 15, cut one 14in x 2in (35.5cm x 5.1cm) strip.
- From Fabric 14 and Fabric 16, cut the following pieces.
  - One Pattern C.
  - One Pattern E (see note, Step 9 of the blue/yellow pillow *before* cutting Pattern E).
  - One Pattern F.
  - One Pattern H.
  - One piece **a** – 4in x 6 $\frac{1}{4}$ in (10.2cm x 15.9cm).
  - One piece **b** – 2in x 7 $\frac{3}{4}$ in (5.1cm x 19.7cm).
  - One piece **d** – 3 $\frac{1}{2}$ in (9cm) square.
  - One piece **f** – 4 $\frac{1}{2}$ in x 3 $\frac{1}{2}$ in (11.4cm x 9cm).



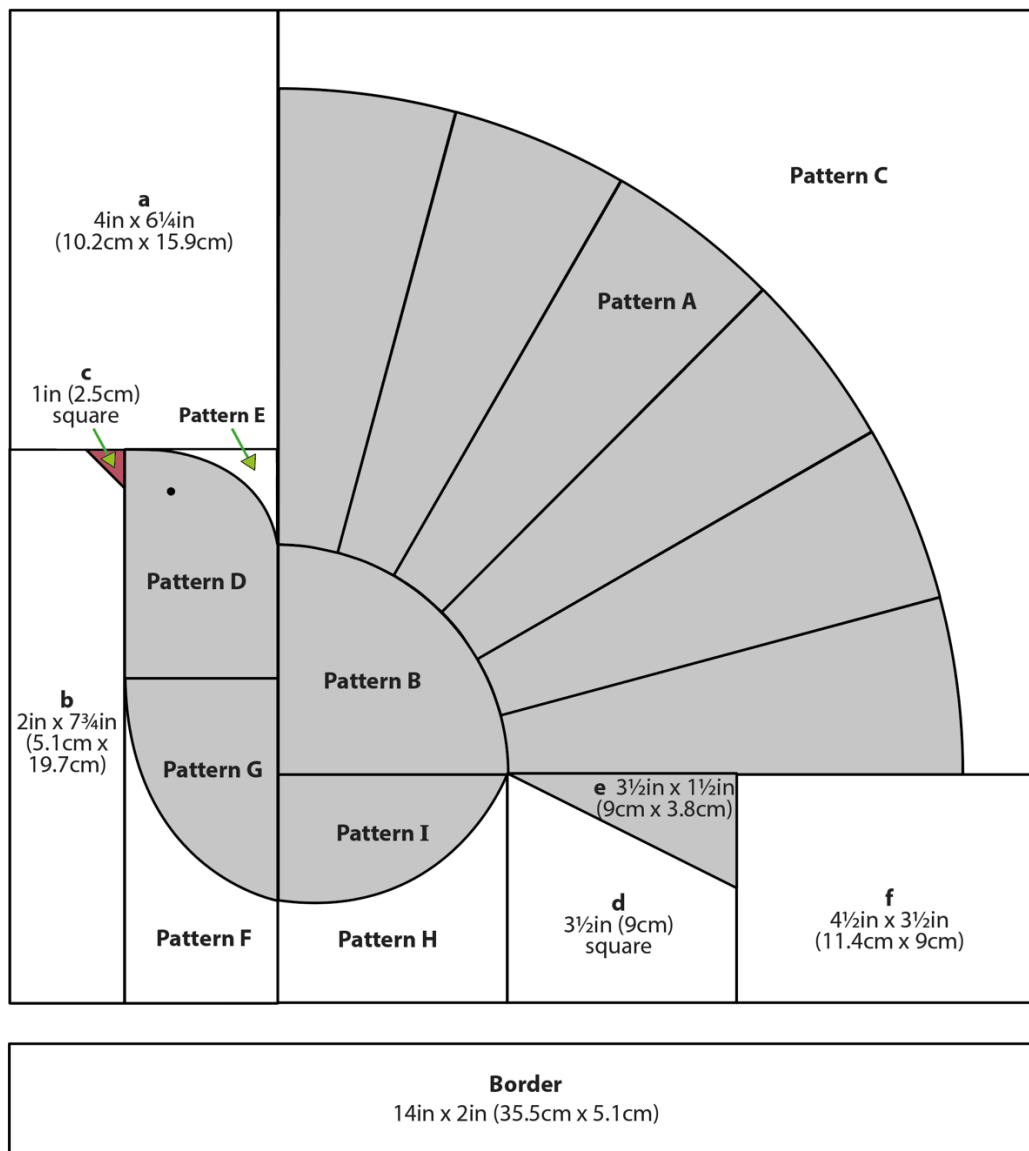
- From Fabric 17 cut two 1in (2.5cm) squares (c), for the birds' beaks.
- From Fabric 18 and Fabric 21 cut the following.
  - One Pattern D.
  - One Pattern G.
  - One Pattern I.
  - One piece e – 3½in x 1½in (9cm x 3.8cm).
- From Fabric 19 and Fabric 20 cut one Pattern B.

**4** Cut the binding fabric into three strips 2½in (6.4cm) x width of fabric. Sew them together end to end and press seams open. Press in half along the length, wrong sides together.

### Fig C Block measurements

To cut the bird pieces, use the relevant full-size patterns where indicated (Patterns A to I)  
Measurements are cut sizes and include ¼in (6mm) seam allowances

**Block size** (unfinished) 14in x 13½in (35.5cm x 34.3cm)



**Making a Block**

**5** Both blocks have the same construction, with one facing left and one facing right. Refer to the blue/yellow pillow for the block-making instructions (Steps 5 to 16), changing fabrics to those for this red/green pillow.

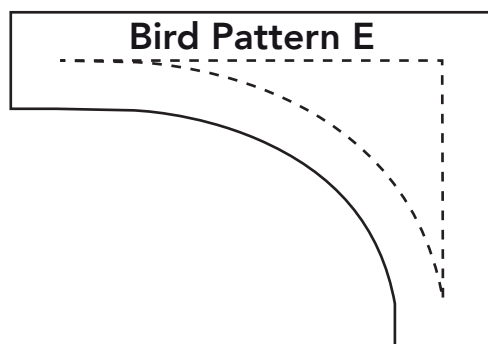
**Quilting and Finishing**

**6** Refer to the blue/yellow pillow for the quilting and finishing instructions (Steps 17 to 20).

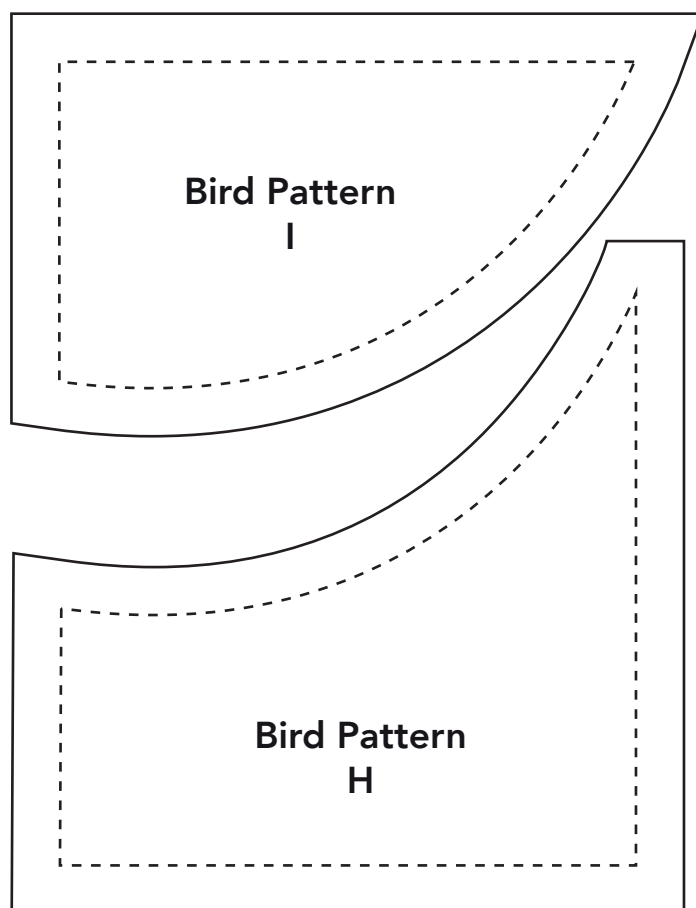
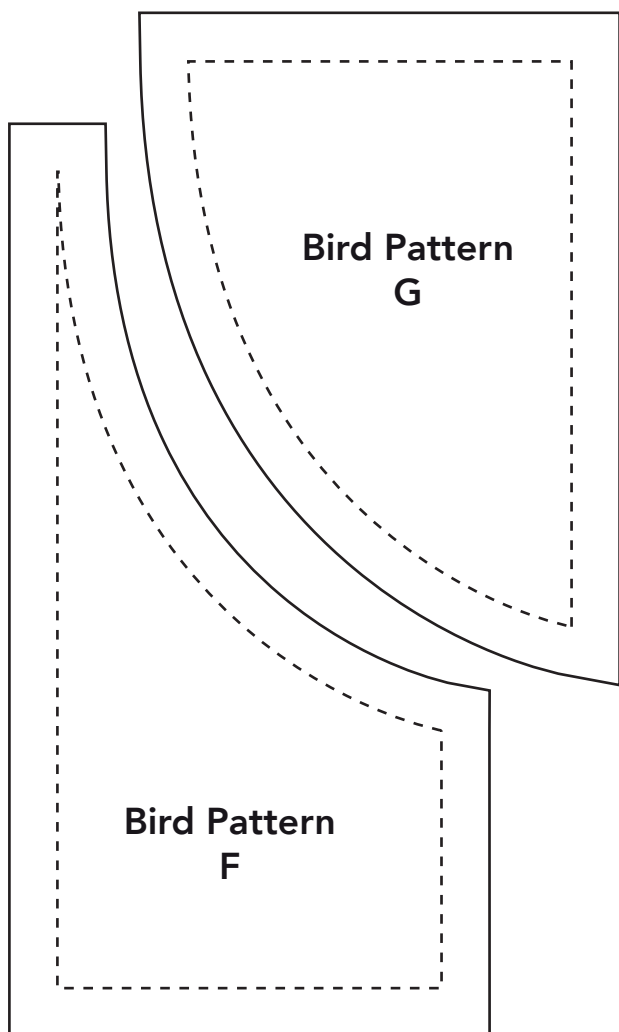
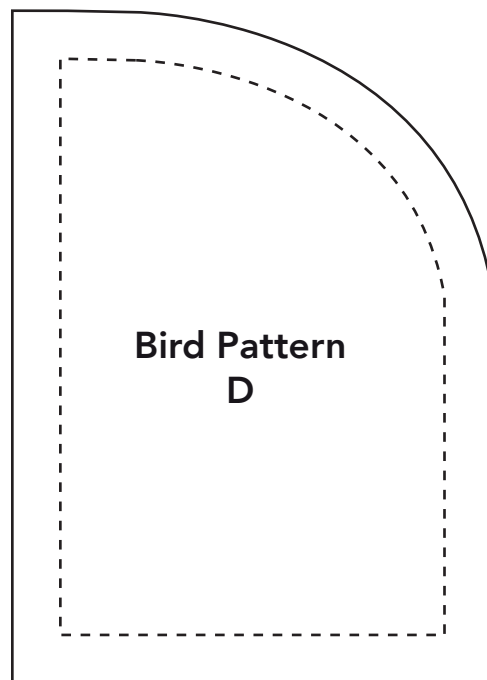
# Fan Bird Patterns for the Quilts and Pillows

## Bird Patterns

For the blocks facing the other way, reverse (flip) the patterns horizontally before cutting the fabric shapes



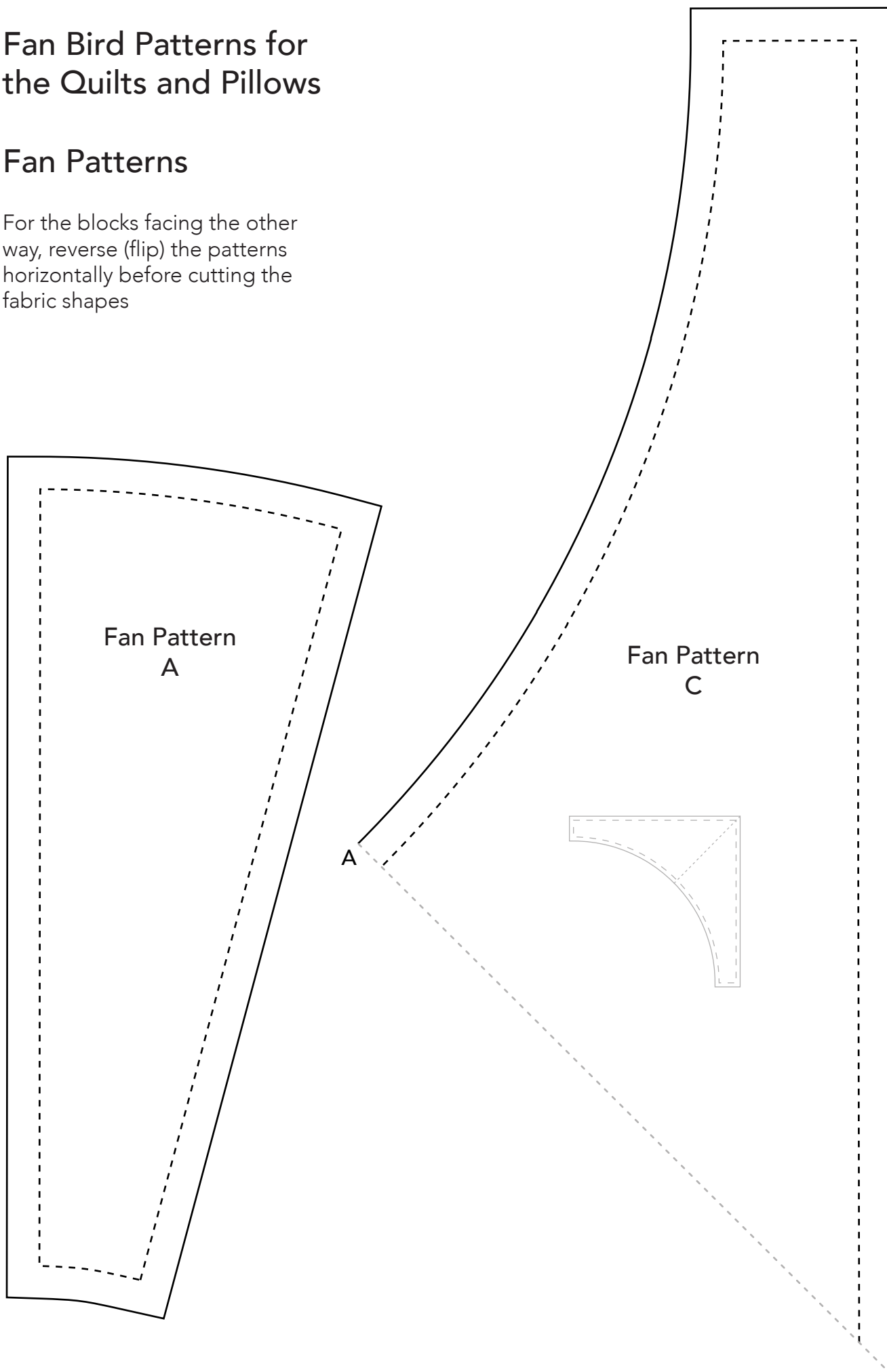
Pattern E is quite small, but can be made easier to sew by increasing the size of two sides edges and trimming to the correct size later – see the project instructions for details

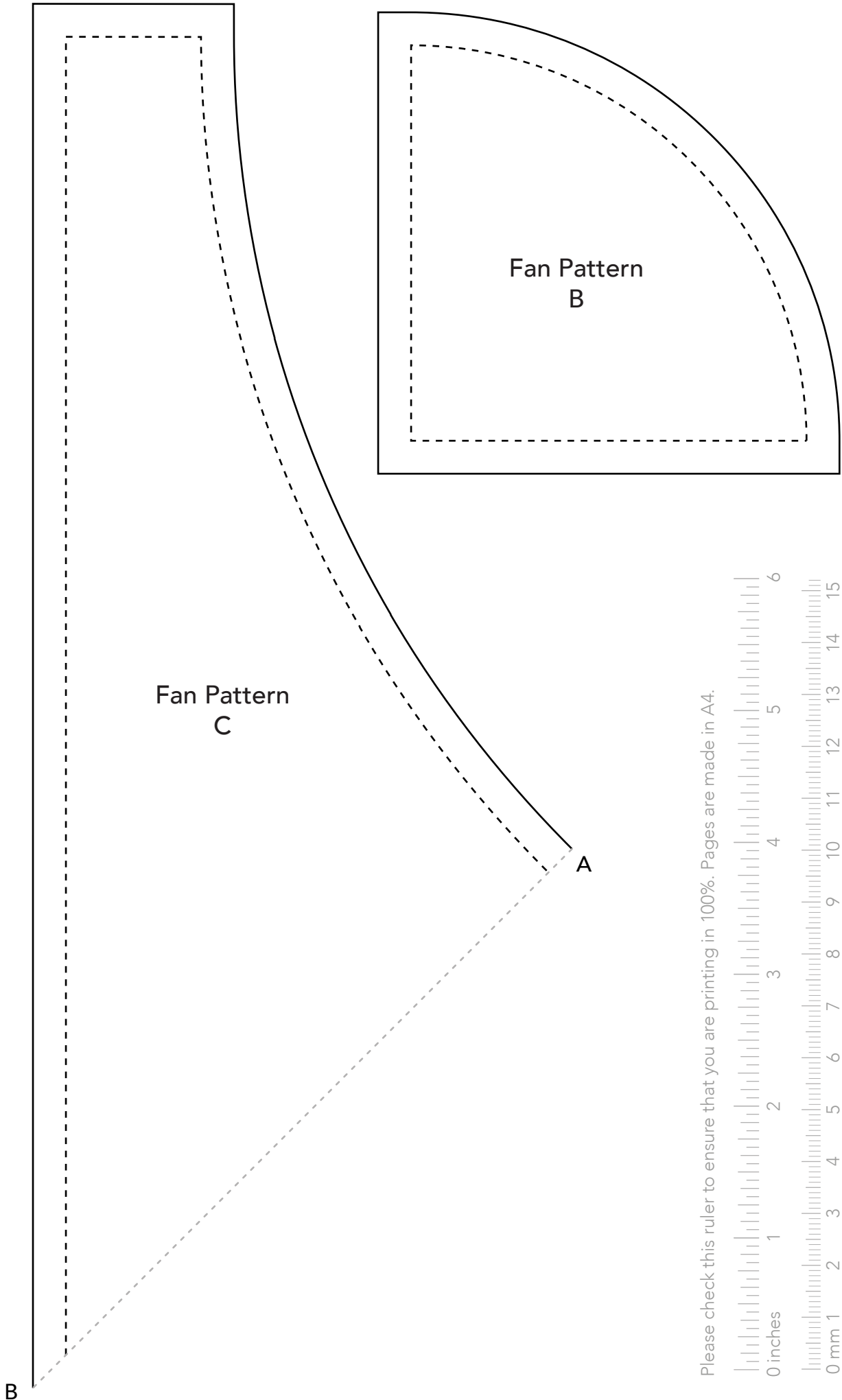


# Fan Bird Patterns for the Quilts and Pillows

## Fan Patterns

For the blocks facing the other way, reverse (flip) the patterns horizontally before cutting the fabric shapes





Fan Pattern  
C

Fan Pattern  
B

Please check this ruler to ensure that you are printing in 100%. Pages are made in A4.



B

A