



Tilda®

Hibernation

Berry Wreath Cushions
Beige and Lafayette

The image shows a red banner with a decorative border featuring a squirrel on a branch and blue flowers. The text is centered and includes the Tilda logo, the collection name 'Hibernation' in a cursive font, and the product name 'Berry Wreath Cushions Beige and Lafayette' in a sans-serif font.



Berry Wreath Cushions

(Beige colourway and Lafayette colourway)

Four gorgeous cushions have been designed to accompany the Berry Wreath Quilts. The construction of the cushion is easy, with a border bringing it up to a generous 20in (51cm) square. These instructions described the Beige Cushion and then the Lafayette Cushion. See tildasworld.com for the instructions for the Light Blue and Eggplant Cushions and also the quilt instructions. The Beige Cushion uses the same fabrics as the red/sage quilt. The Lafayette Cushion also uses the same fabrics, except for a change of background colour and Fabric 15. These instructions describe the Beige Cushion in detail. For the Lafayette Cushion, go to the end of the instructions for the Materials list and Fig A and Fig B.

Difficulty rating **

Materials (Beige Cushion)

- Fabric 1: 5/8yd (60cm) – Eucalyptus beige (110090)
- Fabric 2: two 3in (7.6cm) squares – Slumbermouse plum (100526)
- Fabric 3: two 3in (7.6cm) squares – Winter Rose hibiscus (100527)
- Fabric 4: two 3in (7.6cm) squares – Sleepybird mulberry (100528)
- Fabric 5: two 3in (7.6cm) squares – Autumn Bloom old rose (100529)
- Fabric 6: two 3in (7.6cm) squares – Squirrel Dreams hibiscus (100530)
- Fabric 7: two 1 3/4in (4.4cm) squares – Winter Rose blue (100522)
- Fabric 8: two 1 3/4in (4.4cm) squares – Sleepybird denim (100523)
- Fabric 9: two 1 3/4in (4.4cm) squares – Autumn Bloom eggplant (100524)
- Fabric 10: two 3in (7.6cm) squares – Slumbermouse lafayette (100536)
- Fabric 11: two 3in (7.6cm) squares – Winter Rose sage (100537)
- Fabric 12: two 3in (7.6cm) squares – Sleepybird lafayette (100538)
- Fabric 13: four 3in (7.6cm) squares – Autumn Bloom sage (100539)
- Fabric 14: two 3in (7.6cm) squares – Squirrel Dreams sage (100540)
- Fabric 15: two 3in (7.6cm) squares – Eucalyptus lafayette (110095)
- Fabric 16: two 3in (7.6cm) squares – Olive Branch old rose (110089)
- Fabric 17: two 1 3/4in (4.4cm) squares – Eucalyptus eggplant (110086)
- Fabric 18: two 3in (7.6cm) squares – Olive Branch laurel (110094)
- Wadding (batting): 22in (56cm) square
- Lining fabric: 22in (56cm) square (optional)
- Fabric for back of pillow: 1/2yd (50cm) – Olive Branch blush (110087)
- Binding fabric: 1/4yd (25cm) – Eucalyptus beige (110090)
- Piecing and quilting threads
- Quilter's ruler, rotary cutter and mat
- Five buttons for fastening (optional): Hibernation buttons 16mm (400059)
- Cushion pad to fit cover

Fabric Notes

For many of the fabrics, only small pieces are needed and if you have made the Berry Wreath Quilt in the red/sage colourway you may have left-overs you can use.

Finished Size

20in (51cm) square

General Notes

- Fabric quantities are based on a usable width of 42in (107cm), unless otherwise stated.
- Measurements are in imperial inches with metric conversions in brackets – use only *one* system throughout (preferably inches). Width measurements are generally given first.
- Before using your fabrics, press before cutting and trim as needed to square up the fabric pattern/weave, using a quilting ruler to cut the top raw edge at 90 degrees to the selvages.
- Use ¼in (6mm) seams unless otherwise instructed.
- Read all the instructions through before you start.

Cushion Layout

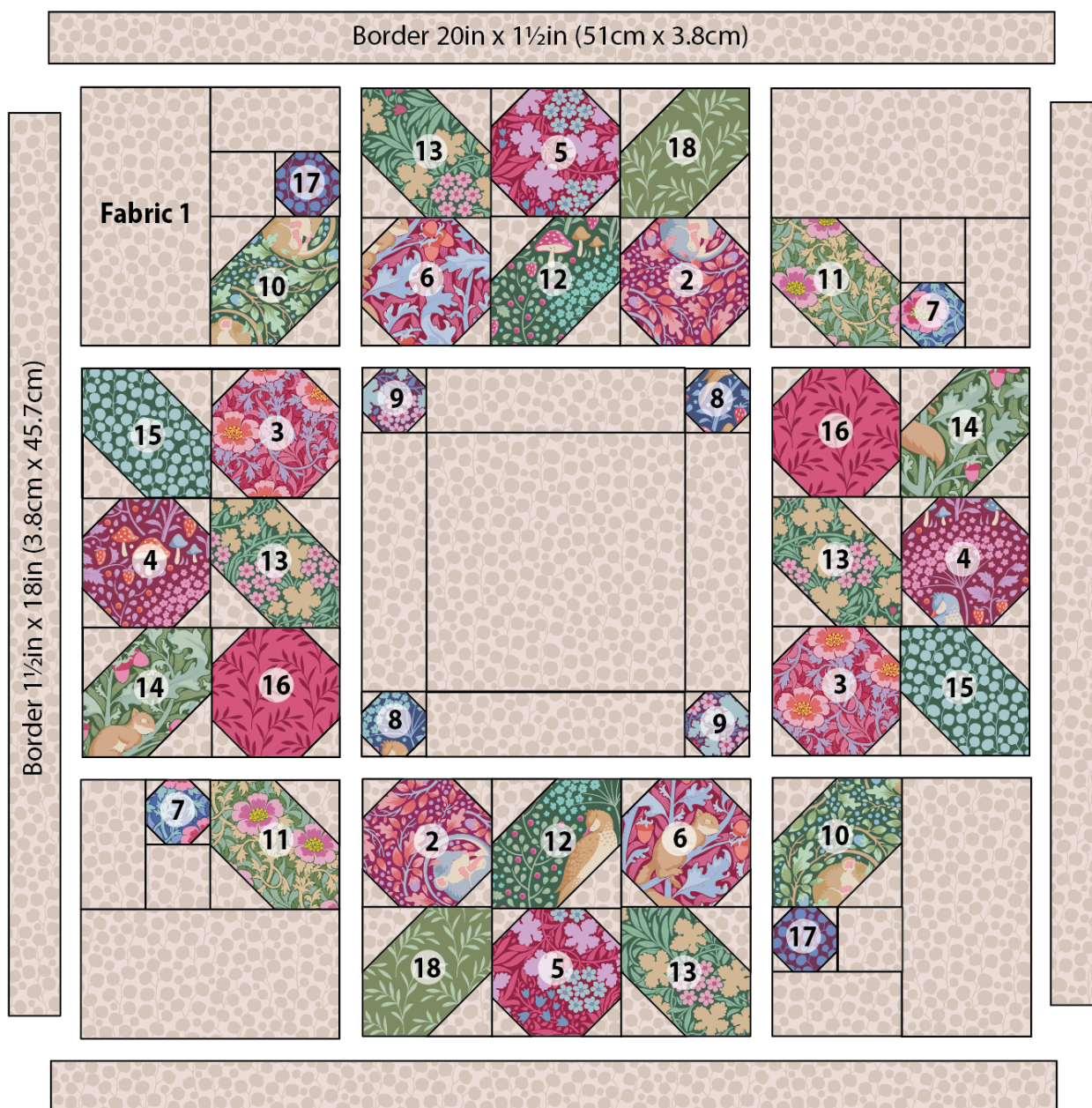
1 The cushion is made up of a single block, framed by a narrow border. See **Fig A** for the fabrics used and **Fig B** for the cushion layout and fabric positions.

Fig A Fabric swatches (beige cushion)



Fig B Cushion layout and fabric positions (beige cushion)

Numbers indicate the fabrics used (see Fig A)



Cutting Out

2 Cut the Fabric 1 border pieces first, keeping the remainder of the fabric for the block.

- For the side border pieces, cut two strips 1½in x 18in (3.8cm x 45.7cm).
- For the top and bottom border pieces, cut two strips 20in x 1½in (51cm x 3.8cm).

3 When cutting Fabric 1 for the squares and rectangles for the block, refer to **Fig B** for the fabric positions in the block, **Fig C** for the measurements and **Fig D** for the sections needed for the block. The pieces of Fabric 1 for shapes **a**, **b**, **c**, **e**, **g**, **i**, **j** and **k** are best cut as strips across the width of the fabric, and then sub-cut into the squares and rectangles needed. In total, you will need the following pieces of Fabric 1.

- Piece **a** – 3in x 5½in (7.6cm x 14cm) – cut 4.
- Piece **b** – 3in x 1¾in (7.6cm x 4.4cm) – cut 4.

- Piece **c** – 1¾in (4.4cm) square – cut 4.
- Piece **e** – ⅞in (2.2cm) – cut 32
- Piece **g** – 1¾in (4.4cm) square – cut 32.
- Piece **i** – 1¼in (3.2cm) square – cut 48.
- Piece **j** – 5½in (14cm) square – cut 1.
- Piece **k** – 5½in x 1¾in (14cm x 4.4cm) – cut 4.

4 When cutting the remaining print fabrics for the squares and rectangles for the blocks, refer to **Fig B** for the fabric positions in the block and **Fig C** for the measurements. The Materials list gives the actual number of squares you will need for shapes **d**, **f** and **h**.

- From Fabrics 7, 8, 9 and 17, cut two piece **d** – 1¾in (4.4cm) square.
- From Fabrics 2, 3, 4, 5, 6 and 16, cut two piece **h** – 3in (7.6cm) square.
- From Fabrics 10, 11, 12, 14, 15 and 18, cut two piece **f** – 3in (7.6cm) square.
- From Fabric 13, cut four piece **f** – 3in (7.6cm) square.

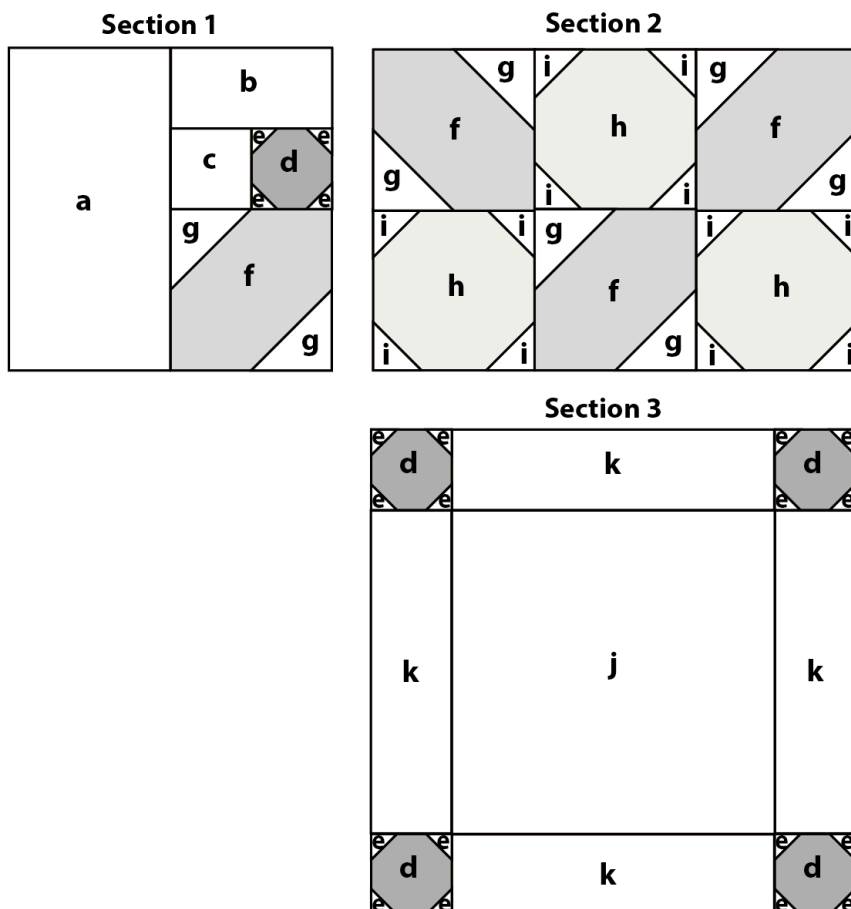
5 To cut the fabric for the back of the cushion, remove any selvages and cut the fabric into two pieces each 21in x 15in (53cm x 38cm).

6 Cut the binding fabric into three strips 2½in (6.4cm) x width of fabric. Sew them together end to end and press seams open. Press in half along the length, wrong sides together.

Fig C Cut measurements for the block

Sizes include seam allowances

All pieces to be cut initially as squares or rectangles

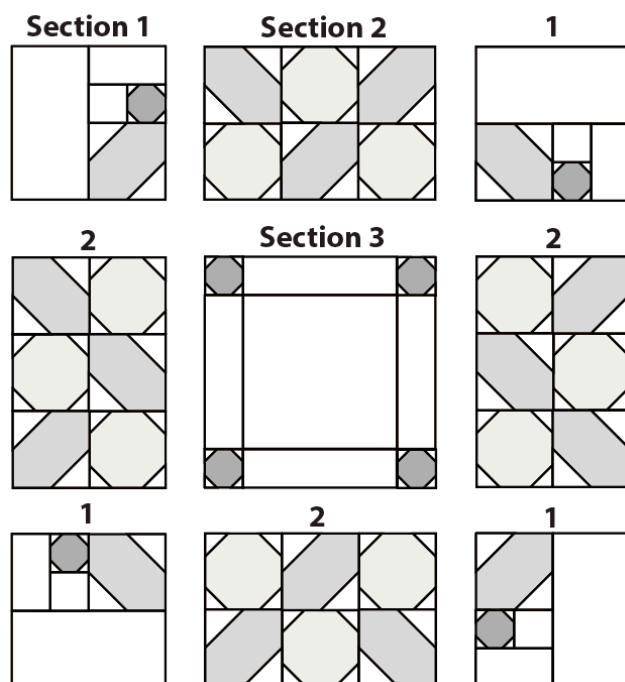


Measurements are given for Section 1, Section 2 and Section 3 and these layouts are repeated to form the block (see Fig D)

- a** 3in x 5½in (7.6cm x 14cm)
- b** 3in x 1¾in (7.6cm x 4.4cm)
- c** 1¾in (4.4cm) square
- d** 1¾in (4.4cm) square
- e** ⅞in (2.2cm) square
- f** 3in (7.6cm) square
- g** 1¾in (4.4cm) square
- h** 3in (7.6cm) square
- i** 1¼in (3.2cm) square
- j** 5½in (14cm) square
- k** 5½in x 1¾in (14cm x 4.4cm)

Fig D Layout of the block

Section 1 and Section 2 are used four times and Section 3 once



Making the Block

7 Apart from matching up seams when sewing the units for the block together, there is only one technique used, which is creating corner triangle units. **Fig E** shows the basic method, shown in greys. Take the larger piece of fabric and place it right side (RS) up. Take the smaller square and pencil mark the diagonal line on the wrong side (WS). Pin the square right sides together with the larger piece of fabric, aligning the edges as shown and with the diagonal line in the direction needed. (Note: the position of the square and the direction of the marked line will vary depending on the unit you are making.) Sew along the marked line. Trim off excess fabric $\frac{1}{4}$ in (6mm) outside the sewn line and press the triangle outwards.

8 **Fig F** shows that this corner triangle method is used for Unit 1, where all four corners have a triangle. Unit 2 also has four corner triangles, except that the unit is larger. Unit 3 and Unit four have just two corners, but on opposite sides. The unfinished sizes are given for each of the units. Make all of the corner triangle units needed for the block, changing fabrics as shown in **Fig B**.

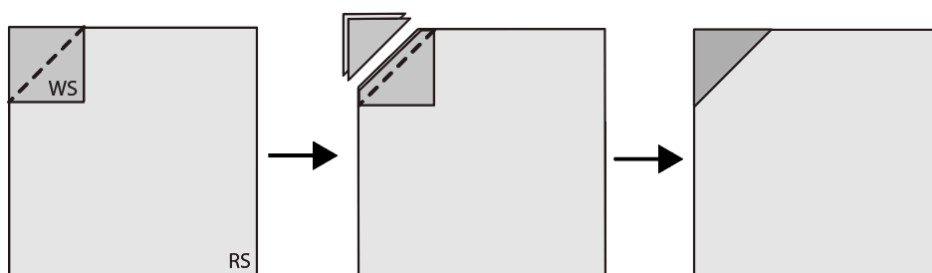
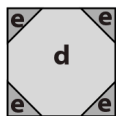
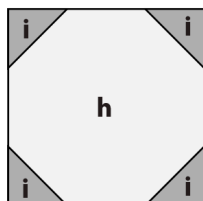
Fig E Making corner triangle units

Fig F Corner triangle unit sizes

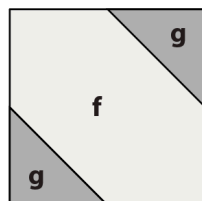
Unit 1 – triangles in all corners – 1¾in (4.4cm) square (unfinished)



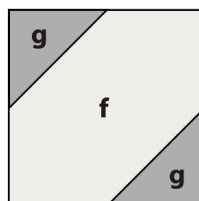
Unit 2 – triangles in all corners – 3in (7.6cm) square (unfinished)



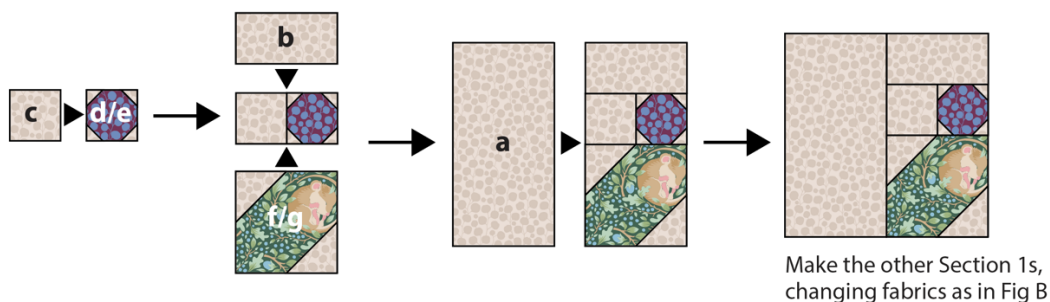
Unit 3 – triangles in two corners – 3in (7.6cm) square (unfinished)



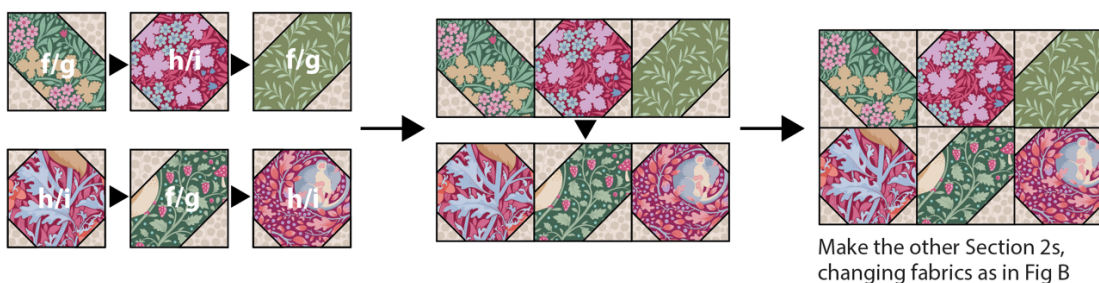
Unit 4 – triangles in two corners – 3in (7.6cm) square (unfinished)



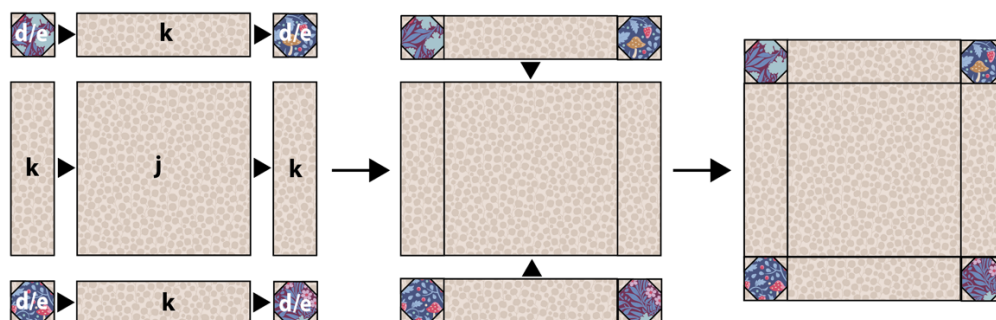
9 Once all the pieced units have been made, you can begin to sew the sections of the block together. Start by following **Fig G** to sew a Section 1 together, finding the correct unpieced pieces and arranging them with the two pieced units, as shown. Sew the seams in the order indicated, matching seams neatly and pressing seams after each stage. Once sewn, the section should be 5½in (14cm) square. Make three more of Section 1, using the correct fabric combinations (as in **Fig B**). The units have the same layout but will be rotated when it's time to sew the block together later.

Fig G Assembling a Section 1

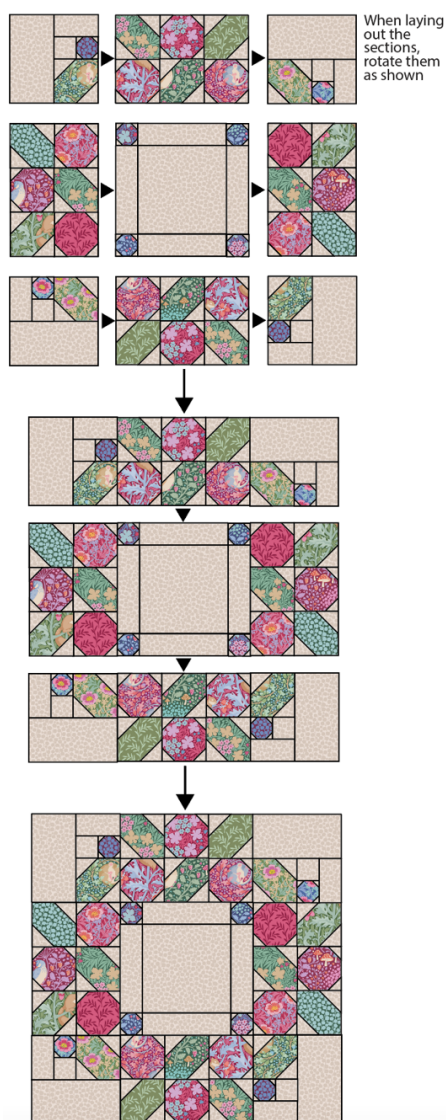
10 Follow **Fig H** to sew a Section 2 together, sewing into rows first and then sewing the rows together, matching seams neatly. Once sewn, the section should be 8in x 5½in (20.3cm x 14cm). Make three more of Section 2, using the correct fabric combinations (as in **Fig B**).

Fig H Assembling a Section 2

11 Follow **Fig I** to sew Section 3 together. Sew the section together into three rows first, pressing the seams of row 1 and row 3 in one direction and the seams of middle row 2 in the opposite direction. Now sew the rows together, matching seams neatly. Once sewn, the section should be 8in (20.3cm) square.

Fig I Assembling Section 3

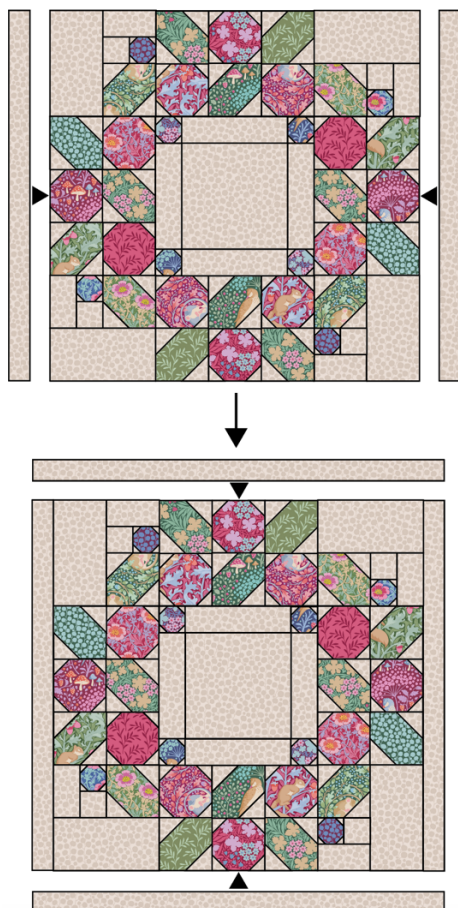
12 When all the sections of a block have been assembled, lay them out as shown in **Fig J**, rotating the sections as shown to create the wreath shape. Sew the sections together into three rows, pressing the seams of row 1 and row 3 in one direction and the seams of row 2 in the opposite direction. Now sew the rows together, matching seams neatly and press. Check that the block is 18in (45.7cm) square.

Fig J Assembling the block

Adding the Border

13 For the border, sew the shorter border strips to the sides of the block and press the seams outwards (**Fig K**). Now sew the longer border strips to the top and bottom of the block and press seams outwards. The block should now be 20in (51cm) square (unfinished).

Fig K Adding the border



Quilting and Finishing

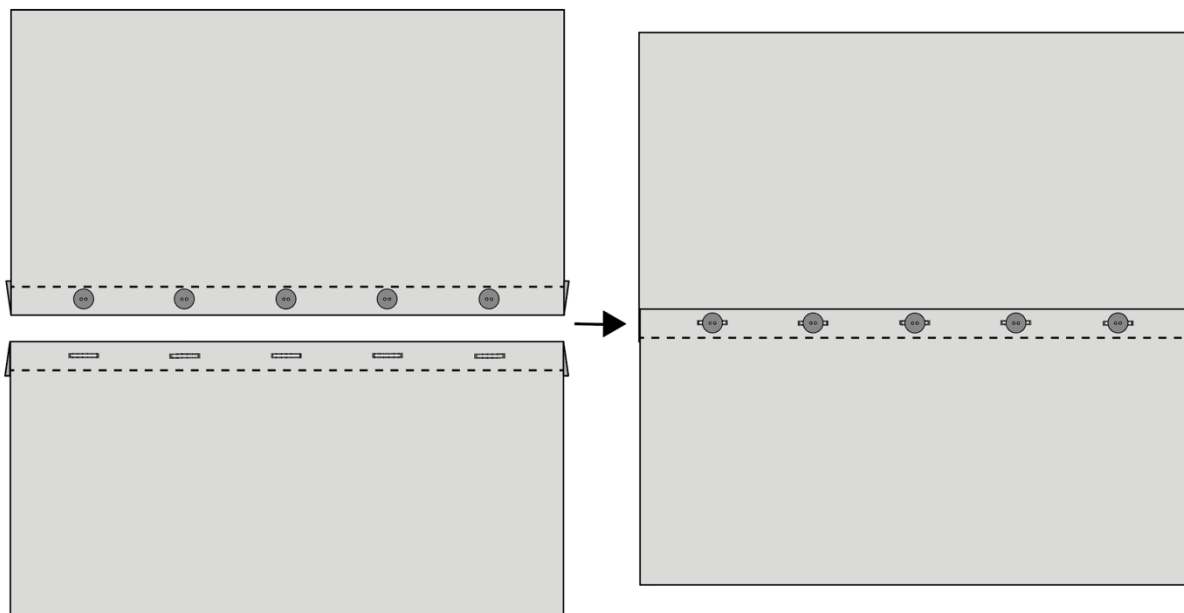
14 Make a quilt sandwich of the patchwork, wadding (batting) and lining fabric (if using). Quilt as desired. Trim off excess wadding and lining fabric to match the patchwork size.

15 To make up the cushion cover, take the two pieces of fabric for the cushion back and on one long edge of each piece, create a hem by turning the edge over by 1in (2.5cm), twice. Sew the seams with matching thread and press (**Fig L**). The diagram is shown in greys, so you can use the Tilda fabric and buttons suggested in the Materials list, or those of your choice.

16 For the fastening, using your sewing machine, create five equally spaced buttonholes within the hem of one of the pieces. Sew five buttons onto the other piece, matching their positions to the buttonholes. Note: Instead of making buttonholes, you could use a hook and loop fastening, such as Velcro to fasten the cover and sew on the buttons as a decorative feature.

17 The cushion has a bound edge, so the pieces are assembled with right sides out, as follows. Place the quilted patchwork right side down. On the backing, fasten the buttons into the buttonholes and then place the whole piece on top of the patchwork, right side up. Check it is the same size as the patchwork, trimming any raw edges if needed. Make sure the outer edges of all pieces are aligned. Pin or tack (baste) the layers together and then bind as normal. As you sew the binding in place it will fix the other layers together. Press the cover and insert a cushion pad to finish.

Fig L Making up with a button fastening



Berry Wreath Cushions

(Lafayette colourway)

The Lafayette Cushion is wonderfully dramatic and would look great in any interior, particularly in a modern one. It uses the same fabrics as the Beige Cushion and the red/sage Berry Wreath Quilt, except that the background colour is changed from Eucalyptus beige to Eucalyptus lafayette. Fabric 15 also changes from Eucalyptus Lafayette to Eucalyptus sage. Use the Lafayette Materials list given below and Fig A and Fig B, and then follow the making instructions given for the Beige Cushion.

Difficulty rating **

Materials (Lafayette Cushion)

- Fabric 1: $\frac{5}{8}$ yd (60cm) – Eucalyptus lafayette (110095)
- Fabric 2: two 3in (7.6cm) squares – Slumbermouse plum (100526)
- Fabric 3: two 3in (7.6cm) squares – Winter Rose hibiscus (100527)
- Fabric 4: two 3in (7.6cm) squares – Sleepybird mulberry (100528)
- Fabric 5: two 3in (7.6cm) squares – Autumn Bloom old rose (100529)
- Fabric 6: two 3in (7.6cm) squares – Squirrel Dreams hibiscus (100530)
- Fabric 7: two 1 $\frac{3}{4}$ in (4.4cm) squares – Winter Rose blue (100522)
- Fabric 8: two 1 $\frac{3}{4}$ in (4.4cm) squares – Sleepybird denim (100523)
- Fabric 9: two 1 $\frac{3}{4}$ in (4.4cm) squares – Autumn Bloom eggplant (100524)
- Fabric 10: two 3in (7.6cm) squares – Slumbermouse lafayette (100536)
- Fabric 11: two 3in (7.6cm) squares – Winter Rose sage (100537)
- Fabric 12: two 3in (7.6cm) squares – Sleepybird lafayette (100538)
- Fabric 13: four 3in (7.6cm) squares – Autumn Bloom sage (100539)
- Fabric 14: two 3in (7.6cm) squares – Squirrel Dreams sage (100540)
- Fabric 15: two 3in (7.6cm) squares – Eucalyptus sage (110093)
- Fabric 16: two 3in (7.6cm) squares – Olive Branch old rose (110089)
- Fabric 17: two 1 $\frac{3}{4}$ in (4.4cm) squares – Eucalyptus eggplant (110086)
- Fabric 18: two 3in (7.6cm) squares – Olive Branch laurel (110094)
- Wadding (batting): 22in (56cm) square
- Lining fabric: 22in (56cm) square (optional)
- Fabric for back of pillow: $\frac{1}{2}$ yd (50cm) – Olive Branch laurel (110094)
- Binding fabric: $\frac{1}{4}$ yd (25cm) – Eucalyptus lafayette (110095)
- Piecing and quilting threads
- Quilter's ruler, rotary cutter and mat
- Five buttons for fastening (optional): Hibernation buttons 16mm (400059)
- Cushion pad to fit cover

Fabric Notes

For many of the fabrics, only small pieces are needed and if you have made the Berry Wreath Quilt in the red/sage colourway you may have left-overs you can use.

Finished Size

20in (51cm) square

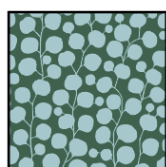
General Notes

- Fabric quantities are based on a usable width of 42in (107cm), unless otherwise stated.
- Measurements are in imperial inches with metric conversions in brackets – use only *one* system throughout (preferably inches). Width measurements are generally given first.
- Before using your fabrics, press before cutting and trim as needed to square up the fabric pattern/weave, using a quilting ruler to cut the top raw edge at 90 degrees to the selvages.
- Use ¼in (6mm) seams unless otherwise instructed.
- Read all the instructions through before you start.

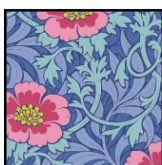
Cushion Layout

1 The cushion is made up of a single block, framed by a narrow border. See **Fig A** for the fabrics used for the Lafayette Cushion and **Fig B** for the cushion layout and fabric positions. The red asterisk (*) shows where Fabric 15 changes.

Fig A Fabric swatches (lafayette cushion)



Fabric 1
Eucalyptus
lafayette



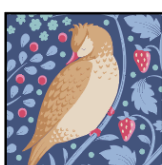
Fabric 7
Winter Rose
blue



Fabric 13
Autumn Bloom
sage



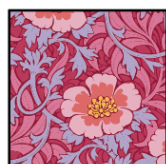
Fabric 2
Slumbermouse
plum



Fabric 8
Sleepybird
denim



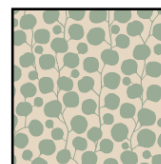
Fabric 14
Squirrel Dreams
sage



Fabric 3
Winter Rose
hibiscus



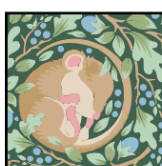
Fabric 9
Autumn Bloom
eggplant



Fabric 15 *
Eucalyptus
sage



Fabric 4
Sleepybird
mulberry



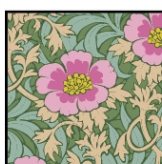
Fabric 10
Slumbermouse
lafayette



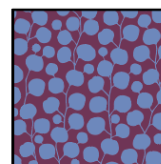
Fabric 16
Olive Branch
old rose



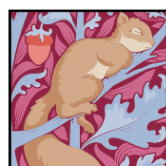
Fabric 5
Autumn Bloom
old rose



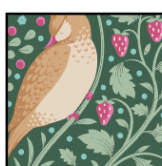
Fabric 11
Winter Rose
sage



Fabric 17
Eucalyptus
eggplant



Fabric 6
Squirrel Dreams
hibiscus

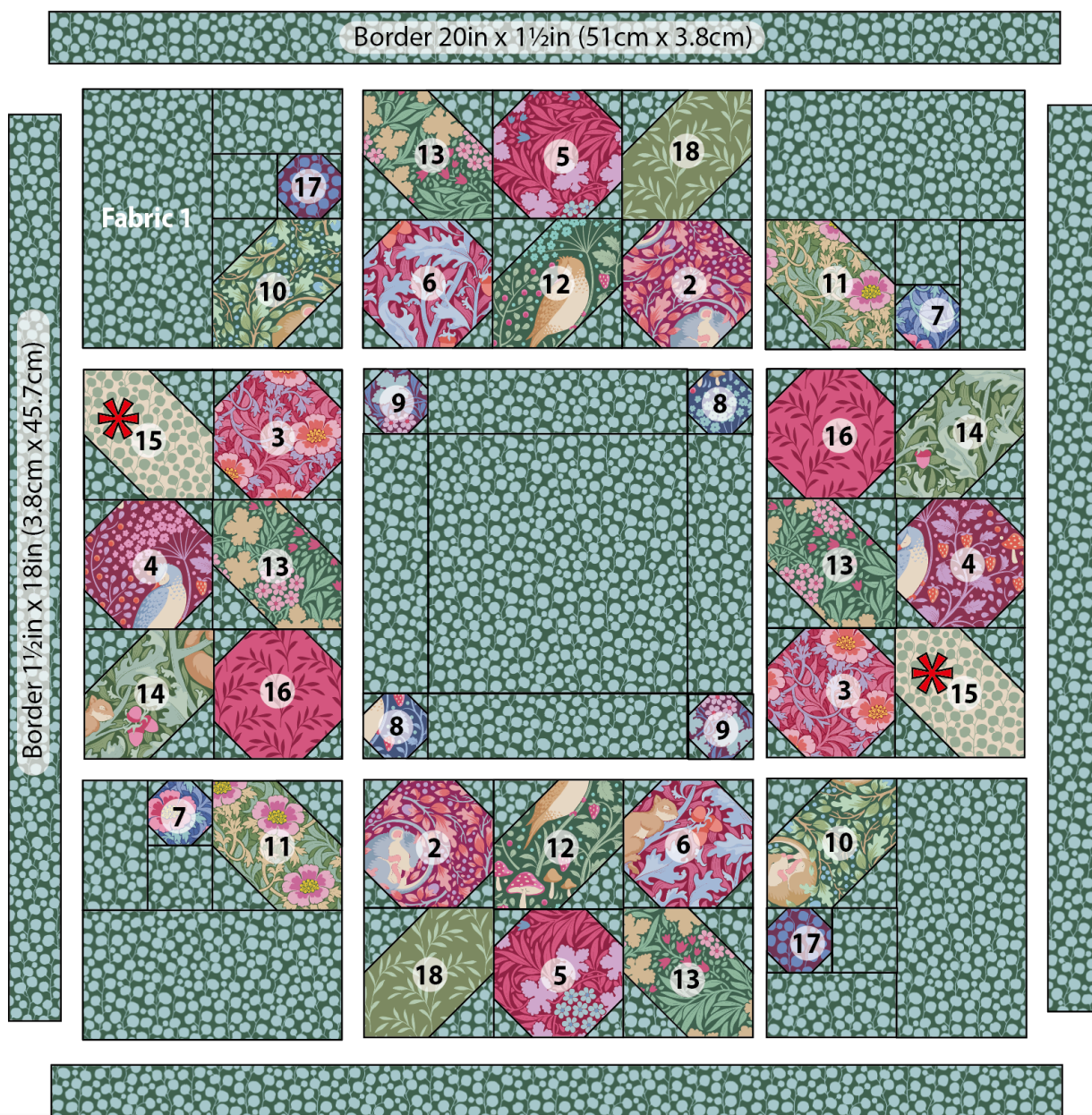


Fabric 12
Sleepybird
lafayette



Fabric 18
Olive Branch
laurel

Fig B Cushion layout and fabric positions (Lafayette cushion)
Numbers indicate the fabrics used (see Fig A)



Cutting Out

2 Follow Steps 2–6 of the Beige Cushion, using the correct fabrics for the Lafayette Cushion.

Making the Block

3 Follow Steps 7–12 of the Beige Cushion, using the fabrics for the Lafayette Cushion.

Adding the Border

4 Follow Step 13 of the Beige Cushion, using the fabrics for the Lafayette Cushion.

Quilting and Finishing

5 Follow Steps 14–17 of the Beige Cushion, using the fabrics for the Lafayette Cushion.