



Welcome!

The Zoom webinar will begin shortly.
All participants are muted.



African American Genealogy Resources

Archives and Information Services

Research Webinar Series

August 26, 2022



What This Session Covers

- Basic research strategies
 - Work back in time
 - Expand from 1870 census
- African American genealogy resources
 - TSLAC records
 - Additional valuable records



Texas State Library and Archives Commission

1201 Brazos Street, Austin, Texas 78701



Casey Dunn Professional Photography



Texas State Library and Archives Commission

- Mission:
 - Provide Texans access to needed information
 - Preserve the archival record of Texas
 - Enhance the service capacity of public, academic, and school libraries
 - Assist public agencies in the maintenance of their records
 - Meet the reading needs of Texans with disabilities
- Service Areas:
 - Reference and Information Center
 - Texas State Archives
 - Sam Houston Center (Liberty, TX)

Visit our website:
www.tsl.texas.gov



Notes on Terminology

- Please note that the terminology used to describe slavery and enslaved individuals may include certain offensive words, terms, or phrases from the time periods of the resources being discussed.
- These terms are used only when citing directly from primary sources, or in reference to proper names of records, events, or concepts.
- Throughout this presentation we use the phrase “enslaved person”, “human”, “individual”, “laborer”, etc., to indicate that the condition of slavery was imposed upon, and not inherent to, the African American individuals being discussed.

More information is on our website:

www.tsl.texas.gov/exhibits/terminology



Where to Start?

- Start from the present and work back
- Search for ancestor in every possible record
 - Look for all known family members
 - Document your search and results
- Think creatively: what is the connection between individual and government?
- Beware of name variations and remember records do not always reflect race



Family History in Official Records

State Records with genealogical value include:

- Military service records
- Confederate pensions
- Republic pensions
- Republic claims
- Muster rolls
- 1867 voter registration
- Confederate indigent family lists
- Convict record ledgers and conduct registers



Post-Civil War

- Voters records
- Education
- Banking
- Land ownership
- Service in state organizations such as
 - State Police
 - Legislature
- Time served in state institution such as
 - State prison
 - Eleemosynary (state-supported) institutions



Voter Registration of 1867

Voter registration records include:

- Name
- Time of residence in the state, in the county, and in the precinct
- Place of nativity
- When and where naturalized
- Remarks.

120 Harris County

No.	DATE OF REGISTRY.	NAMES	PLACE OF RESIDENCE	PRECINCT.	TIME OF RESIDENCE.			
					IN STATE.	IN COUNTY.	IN PRECINCT.	
161	June 11 1867	Frederick Peters	Houston	22	6mo	2	6mo	
162		Abraham Green		8		8		
163		Henry Johnson		16		16		
164		John Morris		11		11		
165		Henry Robinson		20		2		
166		Isaac Jones		8		8		
167		Agnes Knight		15		17	March	
168		Wm. P. Long	Houston	20		2		
169		Orayon Lewis	Houston	15		16	March	
170	16	John M. Jones		5		3	6mo	
171		Henry M. Parker		27		27		
172		James H. Jones		16		16		
173		J. Richardson		11		11	March	
174		Charles H. Bryant		11		11	March	
175		James M. Parks		1		2	6mo	
176		Charles Miller		20		10		
177		George King		12		2		
178		Thomas Carter		24		20	March	
179		William Jones		7		7	6mo	
180		Benjamin Richardson		5		5		
181		George Hays		18		9	March	
182		Walter Hays		10		6		
183		Henry Hays		8		8		
184		John H. King		16		18		
185		Benjamin		8		7		
186		Peter Hall		16		18		



Scholastic Census Records

- For early census lists, students or heads of household are named, depending on county
- Later cards list students individually or with family, and include birthdates, parents name, school, grade, race, and in some instances, disabilities
- Some information may be confidential under federal law protecting privacy



Scholastic Census Records

School records that were filmed by or transferred to TSLAC:

Anderson, Bell, Blanco, Bowie, Brooks, Brown, Caldwell, Colorado, Collin, Cooke, Coryell, Ellis, Falls, Fayette, Gillespie, Gonzales, Guadalupe, Haskell, Henderson, Johnson, Kaufman, Leon, Llano, Marion, McLennan, Milam, Navarro, Parker, Robertson, Shackelford, Smith, Willacy, Wise, Young, Van Zandt, Waller, and Washington

- Paper finding aids at TSLAC available for: Bastrop, McLennan, and Milam
- Microfilm at TSLAC available for: Blanco, Caldwell, Gillespie, Guadalupe, & Llano

Additional records not filmed by TSLAC may still be held at the county level. More information is on our website: www.tsl.texas.gov/arc/local/index.html



Records of Teachers

Teacher certification records, on microfilm and paper

- May include address, college, age, years as teacher
- May contain test scores (confidential under state law)

Annual reports of school funds, on microfilm

- Often lists teachers and pay

Normal college records

- Reports may include lists of students, graduates



Freedmen's Bureau

In addition to records of local field offices and administrators, the Freedmen's Bureau maintained records of:

- Schools
- Marriages
- Claims
- Hospitals
- Rations
- Persons hired, labor contracts, indentures, apprenticeships
- Land
- Courts



Labor Contract

Date		Name of Contractor to or Plaintiff	Name of Freedman	Remarks
January	8	Thos. G. McMahon	Joseph Townsend	This Assurance provided for the Freedmen of the whole group are Plaintiff for settlement to slow down to same.
"	"	H. A. Walker	Nancy Townsend	
			John Allen	
			Margaret Allen	
			Judith Johnson	
			Mary Johnson	
			Augustine Hayward	
			Wilson Hayward	
			Wesley Hendricks	
			1866	



Adjutant General Records

State Police and State Guard military rolls

- Finding aid available online: txarchives.org/tslac/finding_aids/30074.xml

Reconstruction records

- Finding aid available online: txarchives.org/tslac/finding_aids/30022.xml

Service records

- Digital images available online: www.tsl.texas.gov/apps/arc/service/



Adjutant General Records

Date	Number	Name and Rank	Name and Rank	County	Statement of Offense
1864		Criminal	Person Injured		Statement of Circumstances

Apr. 56	No. 7	Wm. Carty	Tom Slater	Liberty	Stat in the breast with a knife. Wm. Carty and other white men created a row at a freedmen's ball. In the same he cut the negro and one of his friends. He has been very sick ever since and for that reason has not been arrested.
---------	-------	-----------	------------	---------	---



Convict Ledgers

- Convict Record ledgers, 1849-1954
- Ledger indexes, 1849-1970
- Conduct Registers, 1855-1945 (notes through 1970s)

More information is on our website: www.tsl.texas.gov/arc/convict.html

- Microfilm is available for borrowing through interlibrary loan
- Digital images are available on Ancestry



Clemency and Court Records

Pardon proclamations and applications

- Proclamation, 1846-2009
- Indexes, 1846-1970

Court of Criminal Appeals records (1892-2010)

- Index available through Ancestry or in Archives
- Case files at State Archives may include testimony from district court

Supreme Court records (1840 – c. 2005)

- Card file index to early records can be searched by Archives staff
- Case files at State Archives



Capitol Building Commission Records (1881-1888)

Payroll lists or vouchers may include the following information:

Department or Location

Month and Year of Employment

Name of the contractor and/or subcontractor

Names of the workers

Occupation

Time worked

Hourly wage

Amount Earned

Deductions for board or time checks

Amount Paid

Signature

Remarks

RAY ROLL NO. 13.

FOR *Admission with Quarry* FOR MONTH OF *December* 188*3*.

DEPARTMENT.

NAME.	TIME.	PRICE PER HOUR.	AMOUNT.	SIGNATURE.	REMARKS.
<i>Admission with Quarry</i>	<i>2 1/2</i>	<i>15</i>	<i>375</i>	<i>Admission with Quarry</i>	<i>175</i>
<i>L. Bortzo</i>	<i>47</i>	<i>17 1/2</i>	<i>823</i>	<i>L. Bortzo</i>	<i>318</i>
<i>Admission with Quarry</i>	<i>70</i>	<i>16</i>	<i>1120</i>	<i>Admission with Quarry</i>	<i>611 261</i>
<i>Admission with Quarry</i>	<i>72 1/2</i>	<i>15</i>	<i>1085</i>	<i>Juan Pizar</i>	<i>635 250</i>
<i>Admission with Quarry</i>	<i>62 1/2</i>	<i>15</i>	<i>935</i>	<i>Admission with Quarry</i>	<i>545</i>
<i>Admission with Quarry</i>	<i>20</i>	<i>16</i>	<i>320</i>	<i>Admission with Quarry</i>	<i>25</i>
<i>Admission with Quarry</i>	<i>19</i>	<i>15</i>	<i>285</i>	<i>Admission with Quarry</i>	<i>115</i>
<i>Admission with Quarry</i>	<i>110</i>	<i>15</i>	<i>1570</i>	<i>Admission with Quarry</i>	<i>115</i>
<i>Admission with Quarry</i>	<i>19</i>	<i>15</i>	<i>285</i>	<i>Admission with Quarry</i>	<i>115</i>
<i>Admission with Quarry</i>	<i>23</i>	<i>15</i>	<i>345</i>	<i>Admission with Quarry</i>	<i>155</i>
<i>Admission with Quarry</i>	<i>5</i>	<i>15</i>	<i>75</i>	<i>Admission with Quarry</i>	<i>15</i>
<i>Admission with Quarry</i>	<i>119</i>	<i>27 1/2</i>	<i>3270</i>	<i>Admission with Quarry</i>	<i>1046 480</i>
<i>Admission with Quarry</i>	<i>74 1/2</i>	<i>16</i>	<i>1180</i>	<i>Admission with Quarry</i>	<i>1070 370</i>
<i>Admission with Quarry</i>	<i>79 1/2</i>	<i>17 1/2</i>	<i>1380</i>	<i>Admission with Quarry</i>	
<i>Admission with Quarry</i>	<i>113</i>	<i>20</i>	<i>2260</i>	<i>Admission with Quarry</i>	
<i>Admission with Quarry</i>	<i>85</i>	<i>18</i>	<i>1530</i>	<i>Admission with Quarry</i>	<i>1065 90</i>
<i>Admission with Quarry</i>	<i>32 1/2</i>	<i>16</i>	<i>520</i>	<i>Admission with Quarry</i>	<i>225 80</i>
<i>Admission with Quarry</i>	<i>119 1/2</i>	<i>20</i>	<i>2390</i>	<i>Admission with Quarry</i>	<i>1285 110</i>
<i>Admission with Quarry</i>	<i>35</i>	<i>17 1/2</i>	<i>610</i>	<i>Admission with Quarry</i>	<i>450 160</i>
<i>Admission with Quarry</i>	<i>144</i>	<i>25</i>	<i>3600</i>	<i>Admission with Quarry</i>	
<i>Admission with Quarry</i>	<i>103</i>	<i>20</i>	<i>2060</i>	<i>Admission with Quarry</i>	<i>380</i>
<i>Admission with Quarry</i>	<i>140 1/2</i>	<i>20</i>	<i>2810</i>	<i>Admission with Quarry</i>	<i>1500</i>
<i>Admission with Quarry</i>	<i>120 1/2</i>	<i>20</i>	<i>2410</i>	<i>Admission with Quarry</i>	<i>380</i>
<i>Admission with Quarry</i>	<i>15</i>	<i>15</i>	<i>225</i>	<i>Admission with Quarry</i>	
<i>Admission with Quarry</i>	<i>146 1/2</i>	<i>20</i>	<i>2930</i>	<i>Admission with Quarry</i>	<i>375 60</i>
<i>Admission with Quarry</i>	<i>122 1/2</i>	<i>17 1/2</i>	<i>2140</i>	<i>Admission with Quarry</i>	<i>130 40</i>
<i>Admission with Quarry</i>	<i>47</i>	<i>15</i>	<i>705</i>	<i>Admission with Quarry</i>	<i>480 150</i>
<i>Admission with Quarry</i>	<i>137 1/2</i>	<i>20</i>	<i>2750</i>	<i>Admission with Quarry</i>	<i>270 130</i>
<i>Admission with Quarry</i>	<i>87</i>	<i>15</i>	<i>1305</i>	<i>Admission with Quarry</i>	<i>960</i>
<i>Admission with Quarry</i>	<i>27</i>	<i>17 1/2</i>	<i>472</i>	<i>Admission with Quarry</i>	<i>390 40</i>
<i>Admission with Quarry</i>	<i>82</i>	<i>18 1/2</i>	<i>1512</i>	<i>Admission with Quarry</i>	<i>935</i>
<i>Admission with Quarry</i>	<i>196 1/2</i>	<i>20</i>	<i>3930</i>	<i>Admission with Quarry</i>	<i>170 60</i>
<i>Admission with Quarry</i>	<i>136 1/2</i>	<i>18 1/2</i>	<i>2525</i>	<i>Admission with Quarry</i>	<i>440 30</i>
<i>Admission with Quarry</i>	<i>57</i>	<i>17 1/2</i>	<i>1002</i>	<i>Admission with Quarry</i>	<i>120</i>
<i>Admission with Quarry</i>	<i>286 1/2</i>	<i>17 1/2</i>	<i>5012</i>	<i>Admission with Quarry</i>	<i>620</i>
<i>Admission with Quarry</i>	<i>215 1/2</i>	<i>17 1/2</i>	<i>3770</i>	<i>Admission with Quarry</i>	<i>520</i>
<i>Admission with Quarry</i>	<i>237</i>	<i>25</i>	<i>5925</i>	<i>Admission with Quarry</i>	<i>180 15</i>
<i>Admission with Quarry</i>	<i>232</i>	<i>25</i>	<i>5800</i>	<i>Admission with Quarry</i>	<i>1650</i>
<i>Admission with Quarry</i>	<i>37</i>	<i>17 1/2</i>	<i>647</i>	<i>Admission with Quarry</i>	<i>60</i>
<i>Admission with Quarry</i>	<i>34</i>	<i>17 1/2</i>	<i>594</i>	<i>Admission with Quarry</i>	<i>150</i>
<i>Admission with Quarry</i>	<i>126 1/2</i>	<i>17 1/2</i>	<i>2213</i>	<i>Admission with Quarry</i>	<i>500</i>
<i>Admission with Quarry</i>	<i>138 1/2</i>	<i>17 1/2</i>	<i>2423</i>	<i>Admission with Quarry</i>	<i>40</i>
<i>Admission with Quarry</i>	<i>17 1/2</i>	<i>15</i>	<i>260</i>	<i>Admission with Quarry</i>	<i>140</i>
<i>Admission with Quarry</i>	<i>37</i>	<i>20</i>	<i>740</i>	<i>Admission with Quarry</i>	<i>60</i>
<i>Admission with Quarry</i>	<i>115 1/2</i>	<i>16 1/2</i>	<i>1905</i>	<i>Admission with Quarry</i>	<i>1320</i>
<i>Admission with Quarry</i>	<i>86</i>	<i>16 1/2</i>	<i>1419</i>	<i>Admission with Quarry</i>	<i>880</i>
<i>Admission with Quarry</i>	<i>37</i>	<i>17 1/2</i>	<i>647</i>	<i>Admission with Quarry</i>	



16
6
12
12
6
18
Cap



Civil War-Era Records

- Adjutant General's Department, Confederate records, Reports of slave impressment, 1863, 1865
 - Finding aid available online: txarchives.org/tslac/finding_aids/30021.xml

Reports can include:

- Name of the enslaved
- Name of slaveholders
- Total number enslaved
- Total number in service
- Residence
- Date of hire
- Age
- Term of service



Civil War Era Records

FORM A 429 (11-13)

For Use of Soldiers who are in Indigent Circumstances

THE STATE OF TEXAS

County of *Leon*

I, *Henry Phillips* do hereby make application to the Commissioner of Pensions for a pension to be granted me under the Act passed by the 33rd Legislature of the State of Texas, and approved April 7, 1913, on the following grounds:

I enlisted and served in the military service of the Confederate States during the war between the States of the United States, and that I did not desert the Confederate service, but during said war I was loyal and true to my duty, and never at any time voluntarily abandoned my post of duty in the said service; or (that I was in the service of the State of Texas during the war, to protect said State against the Indians and Mexicans for more than 6 months). That I was honorably discharged ~~on~~ *March 5th. 1865, at Beaumont, Texas, because they were through with me.*
(Give date and cause.)

that I have been a bona fide citizen of this State since prior to January 1, A. D. 1900, and have been continuously since a citizen of the State of Texas. I do further state that I do not hold any National, State, city or county office which pays me a salary or fees of \$300.00 per annum, nor have I an income from any other employment or other source whatever which amounts to \$300.00 per annum, nor do I receive from any source whatever money or other means of support amounting in value to the sum of \$300.00 per annum, nor do I own in my own right, nor does any one hold in trust for my benefit or use, nor does my wife own, nor does any one hold in trust for my wife, estate or property, either real, personal or mixed, either in fee or for life, of the assessed value of over one thousand dollars, exclusive of a home of the value of not more than \$1000.00; nor do I receive any aid or pension from any other State, or from the United States, or from any other source, and that I am not an inmate of the Confederate Home, and I do further state that the answers given to the following questions are true:

1. What is your age? *80*
2. Where were you born? *10 miles West of Montgomery,*
3. How long have you resided in Texas? *56 years.*
4. In what county do you reside? *Leon County,*
5. How long have you resided in said county, and what is your postoffice address? *52 years
Juveth, Leon Co. Texas.*
6. Have you applied for a pension under the Confederate pension law and been rejected? If rejected, state when and where. *No.*
7. What is your occupation, if able to engage in one? *Laborer* What is your physical condition? *decrib*
8. In what State was the command in which you served organized? *I served under Capt. [unclear] in Galveston, Texas, and Sabine, Louisiana, and was discharged in 1865.*
9. How long did you serve? Give, if possible, the date of enlistment and discharge. *I served 1864 to 1865.*
10. What was the letter of your company, number of battalion, regiment or battery? *(TX)*
11. If transferred from one command to another, give time of transfer, name of command and time of service. *Not transferred.*
12. What branch of the service did you enlist in—in infantry, cavalry, artillery or navy? *I was detailed as a laborer to construct breastworks & forts for which I received*

34245

Confederate Pension applications:

- About 20 applications have been identified as belonging to African-Americans.
- Henry Phillips, pension #34245, says he constructed breastworks (low defense walls) in Galveston and Sabine while enslaved





Pre-Civil War Records

Free persons of color were not allowed to remain in Texas unless exempt by legislative action:

- Memorials and petitions document requests to remain in Texas
- General and special laws document Congressional response to memorials/petitions



State of Texas }
 County of Harris }
 To the Honorable the Senate
 and House of Representatives of the State of Texas

We the undersigned present to the favorable consideration of the Representatives of the Free inhabitants of the State of Texas the Colored woman Liley, who has been a resident of the City of Houston for the last five years. By her industry and good conduct she has been enabled to realize sufficient means to purchase her freedom, and we feel interested in her case and feel that it is one of those cases that ought to receive the favorable notice of a free and generous people and as such we ask that a law may be passed emancipating her, and authorizing her to remain in Texas.

Houston Apr 1st 1847.

I Cynthia Ewing, lately the owner of the Colored woman Liley, do certify that she is a woman of a good moral character, that she has fully paid me for her liberty - and I ask that the Legislature of Texas may pass a Law to emancipate her.

Chas. M. Bagby
 Daniel G. Wheeler
 Cynthia Ewing
 Thos. S. Berry
 Wm. M. ...

Memorials and Petitions

Petition submitted by Cynthia Ewing, requesting that her former slave Liley or Delilah, who purchased her freedom, be allowed to remain in Texas. The petition was submitted November 1, 1847. Several pages of signatures include testimonials to her ability as a cook.



Bill Files and Laws

Bill files and laws document the response by the Texas Congress or Legislature to memorials and petitions.

TSLAC holds the bill files for Texas from this time period.

- House Bill 51, 7th Legislature in 1858 provides information about Nancy Coleman, a free person of color, her children and grandchildren
- Peter Allen, a free person of color, and musician with Colonel Fannin during the Texas Revolution is described in a legislative committee report



Slave manifests

Two collections on
Ancestry:

- U.S., Southeast Coastwise Inward and Outward Slave Manifests, 1790-1860
- New Orleans, Louisiana, U.S., Slave Manifests, 1807-1860

MANIFEST OF SLAVES, on board the *S.S. Perseverance* is at present Master, bound from the port of **New Orleans** for the Port of *Galveston* tons,

whereof *The Forbes* is at present Master, bound from the port of **New Orleans** for the Port of *Galveston*

Filed and Sold by D. Felt & Co., 21 Chartres St., N. Orleans.

NAMES.	SEX.	AGE.	STATURE.		CLASS.	SHIPPERS OR OWNERS.	RESIDENCE.
			FEET.	INCHES.			
<i>John</i>	<i>male</i>	<i>30</i>	<i>6</i>		<i>W</i>	<i>M B Lamar</i>	<i>Texas</i>
<i>Walter</i>	<i>"</i>	<i>20</i>	<i>5</i>	<i>10</i>	<i>"</i>	<i>"</i>	<i>"</i>
<i>John</i>	<i>"</i>	<i>8</i>	<i>4</i>		<i>"</i>	<i>"</i>	<i>"</i>
<i>Lucey</i>	<i>female</i>	<i>24</i>	<i>5</i>	<i>1</i>	<i>"</i>	<i>"</i>	<i>"</i>
<i>Tommy</i>	<i>"</i>	<i>14</i>	<i>4</i>	<i>11</i>	<i>"</i>	<i>"</i>	<i>"</i>
<i>John</i>	<i>"</i>	<i>22</i>	<i>5</i>	<i>3</i>	<i>"</i>	<i>"</i>	<i>"</i>
<i>Charles</i>	<i>"</i>	<i>4</i>			<i>"</i>	<i>"</i>	<i>"</i>
<i>Rafe</i>	<i>"</i>	<i>6</i>	<i>3</i>	<i>6</i>	<i>"</i>	<i>"</i>	<i>"</i>
<i>Williams</i>	<i>male</i>	<i>1</i>			<i>"</i>	<i>"</i>	<i>"</i>
<i>Pat</i>	<i>"</i>	<i>3</i>			<i>"</i>	<i>"</i>	<i>"</i>

DISTRICT OF NEW-ORLEANS—Port of New-Orleans, the *M B Lamar* Owner of the Slaves named and particularly described in the above Manifest, and of the *Perseverance* do solemnly, sincerely, and truly swear according to the best of his knowledge and belief, that the persons above described were not imported into the United States, since the first day of January, 1808, and that under the laws of the State they are held to service and labor. SO HELP US GOD.

day of *July* 18 *53*

Mirabeau B. Lamar
Thomas Forbes

The National Archives in Washington, DC; Washington, DC; *Slave Manifests of Coastwise Vessels Filed at New Orleans, Louisiana, 1807-1860*; Microfilm Serial: M1895; Microfilm Roll: 27 (Bound from the port of New Orleans for the port of Galveston, 2 July 1853)



of the *Metamora* do solemn
imported into the United States, since the first da

DISTRICT OF NEW ORLEANS

James - eyes - feet - inches - color -
George Costa. 21 5- 11 - dark -
Thomas Turner. 25 5 7 -
Ellis Carter. 25 5- 8 - Yellow
Henry La. 25 5- 8 - dark
Henry La. 25 5- 6 - 11 -
Andrews 27 5- 6 -
Mabie 20 5- 6 -
Lase 30 5- 6 -
Henry Harris 23 5- 6 -
Henry Thomas 18 5- 6 -
Thomas Dorsey 22 5- 5 -
Thomas Garner 17 5- 5 - Brown
Eli Water 18 5- 5 - dark
Leonard Mason 18 5- 4 -
Jerry Brock 18 5- 4 -
William Dewry 21 5- 4 - dark

MANIFEST OF SLAVES, on board
whereof *Metamora*
NAMES

Manifest of Slaves, on board the *Metamora* of burthen 195 tons,
whereof *Gabriel* is at present Master, bound from the Port of NEW-ORLEANS for the Port of
Gabriel Perry

Printed and sold by Benjamin Levy, corner of Chartres and Bienville streets.

NAMES.	SEX.	AGE.	STATURE.		CLASS.	SHIPPERS OR OWNERS.	RESIDENCE.
			FEET.	INCHES.			
John Campbell	White	26	5	11 1/2	Black	E. G. Osburn	New Orleans
Henry Williams	"	22	5	9	Black		
James Johnson	"	17	4	4	Griffe		



Local Government Records

County Records

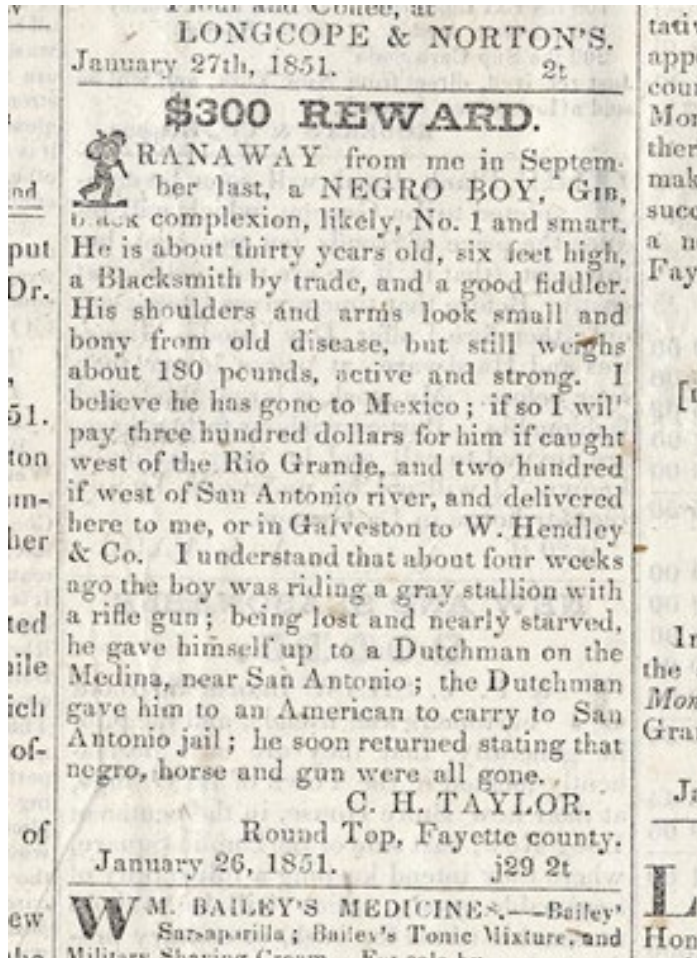
- County Records on Microfilm: www.tsl.texas.gov/arc/local/index.html
- “Locating County Records” webinar and slides: www.tsl.texas.gov/arc/workshops

Tax Rolls

- All counties available in Austin
- Usually begin with creation of county
- Some counties available through 1970s
- County Tax Rolls on Microfilm: www.tsl.texas.gov/arc/taxrolls.html



Newspapers



TSLAC Newspapers

- Microfilm
- Original
- Subscriptions

[Portal to Texas History](#)

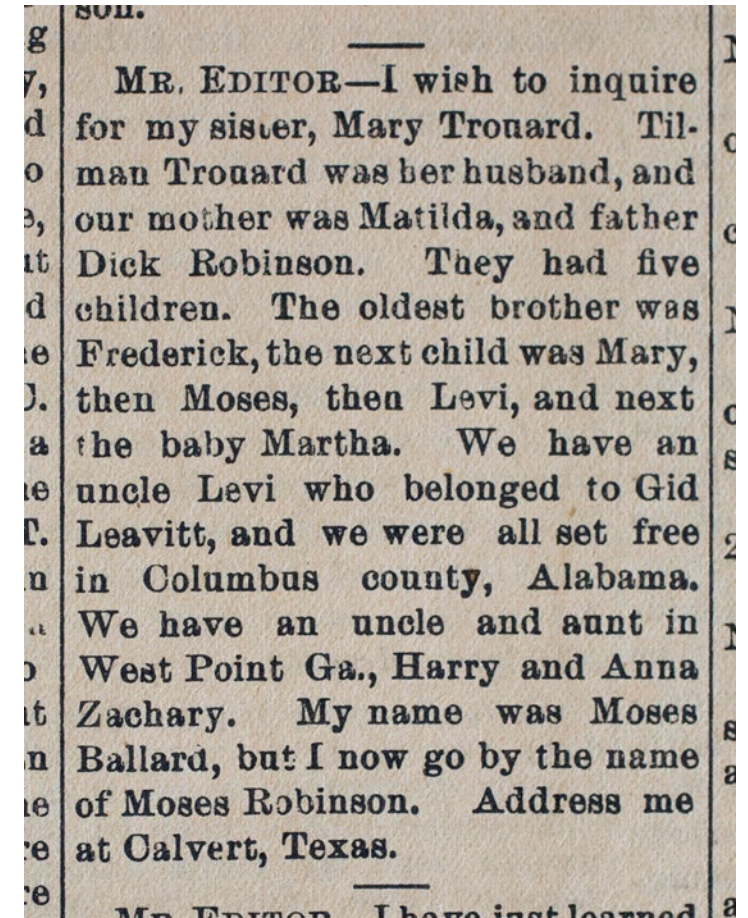
- TDNP (1700+)

[TX "Runaway Slave" Project](#)

- 2500 records

[SW Christian Advocate](#)

- A.M.E. Church
- ["Lost Friends"](#)

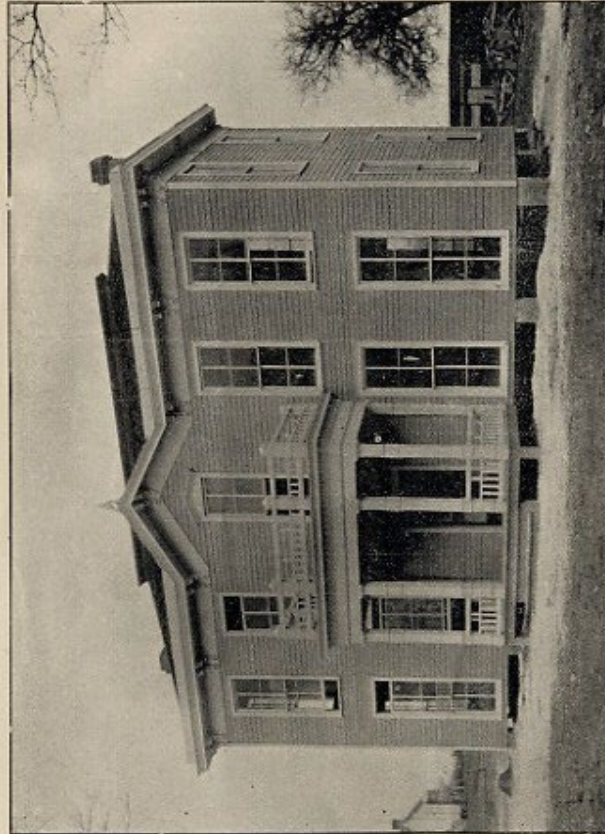


For more information about newspaper research, visit our website: www.tsl.texas.gov/ref/newspapers

Please view our recorded webinar and slides on this topic: www.tsl.texas.gov/arc/workshops



Publications



BROOM FACTORY DEPARTMENT.

TWELFTH ANNUAL REPORT
OF THE
TRUSTEES AND SUPERINTENDENT
OF THE
**Institute for the Deaf, Dumb and Blind
Colored Youths**
OF THE
STATE OF TEXAS.
FOR THE YEAR ENDING OCTOBER 31, 1899.



AUSTIN:
VOS BOECKMANN, MOORE & SCHUTZE, STATE CONTRACTORS.
100.



Summary

- Start from the present and work back in time
- Expand research from 1870 census
- TSLAC may have records of your ancestor
- Republic-era resources covered in March 2022 webinar
- African American genealogy research guide:
www.tsl.texas.gov/ref/africanamericangenealogy





Contact Us

Texas State Library and Archives Commission (TSLAC)

Physical Address: 1201 Brazos Street, Austin, TX 78701

Mailing Address: P.O. Box 12927, Austin, TX 78711

Phone: (512) 463-5455

Email: ref@tsl.texas.gov

Website: www.tsl.texas.gov

Sam Houston Research Library and Research Center

Physical Address: 650 FM 1011, Liberty, TX 77575

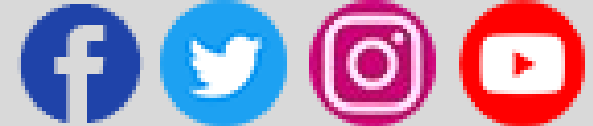
Mailing Address: P.O. Box 310, Liberty, TX 77575

Phone: (936) 336-8821

Email: SamHoustonCenter@tsl.texas.gov

Website: www.tsl.texas.gov/shc

**Like & Follow Us
@TSLAC**





Thank you for attending.

