



# UNODC

United Nations Office on Drugs and Crime



Islamic Republic of Afghanistan



## Afghanistan Opium Survey 2020

Cultivation and Production – Executive Summary

APRIL 2021



Page intentionally left blank

## Introduction

This Executive Summary presents the key findings of the *Afghanistan Opium Survey 2020*. The survey is implemented by NSIA in collaboration with UNODC. The survey team collects and analyses information on the location and extent of opium poppy cultivation, potential opium production and the socio-economic situation in rural areas. This information is essential for planning, implementing and monitoring counter-narcotic efforts.

The opium survey is implemented within the technical framework of the UNODC Illicit Crop Monitoring Programme (ICMP), established in 1999 upon request of the Commission on Narcotic Drugs in its resolution 42/3, Monitoring and verification of illicit cultivation. The objective of ICMP is to assist the international community in monitoring the extent and evolution of illicit crops and to compile reliable and internationally comparable data. Currently, UNODC carries out monitoring activities in seven countries affected by illicit crop cultivation: coca surveys in Bolivia, Colombia and Peru; opium poppy surveys in Afghanistan, Mexico and Myanmar; and a cannabis survey in Nigeria.

The Afghanistan Opium Survey 2020 was implemented under the project “Monitoring of Opium Production in Afghanistan” (AFG/F98), with financial contributions from the Government of United States of America.

## Fact Sheet, Afghanistan Opium Survey 2020<sup>1</sup>

	2019	Change from 2019	2020
Opium poppy cultivation <sup>2</sup>	163,000 ha (149,000 - 178,000)	37%	224,000 ha (202,000 - 246,000)
Number of poppy free provinces <sup>3</sup>	13 out of 34	-1	12 out of 34
Number of provinces affected by poppy cultivation	21 out of 34	+1	22 out of 34
Eradication <sup>4</sup>	21 ha	NA	NA
Average opium yield (weighted by cultivation) <sup>5</sup>	NA	NA	28.0 kg/ha
Potential production of opium <sup>5</sup>	NA	NA	6,300 tons (5,400 - 7,200)
Average farm-gate price of fresh opium at harvest time	US\$ 52/kg	-18%	US\$ 42/kg
Average farm-gate price of dry opium at harvest time	US\$ 63/kg	-13%	US\$ 55/kg
Total farm gate value of opium production	NA	NA	US\$ 350 (300 – 400) million

*Note: Estimates are rounded, percentage changes have been calculated based on precise figures.*

<sup>1</sup> Numbers in brackets indicate the lower and upper bounds of the 95% confidence interval.

<sup>2</sup> In 2019, eradicated area was accounted for in the area estimates. In 2020, no verified eradication data was available to NSIA/UNODC.

<sup>3</sup> A province is defined as poppy-free when it is estimated to have less than 100 hectares of opium poppy cultivation.

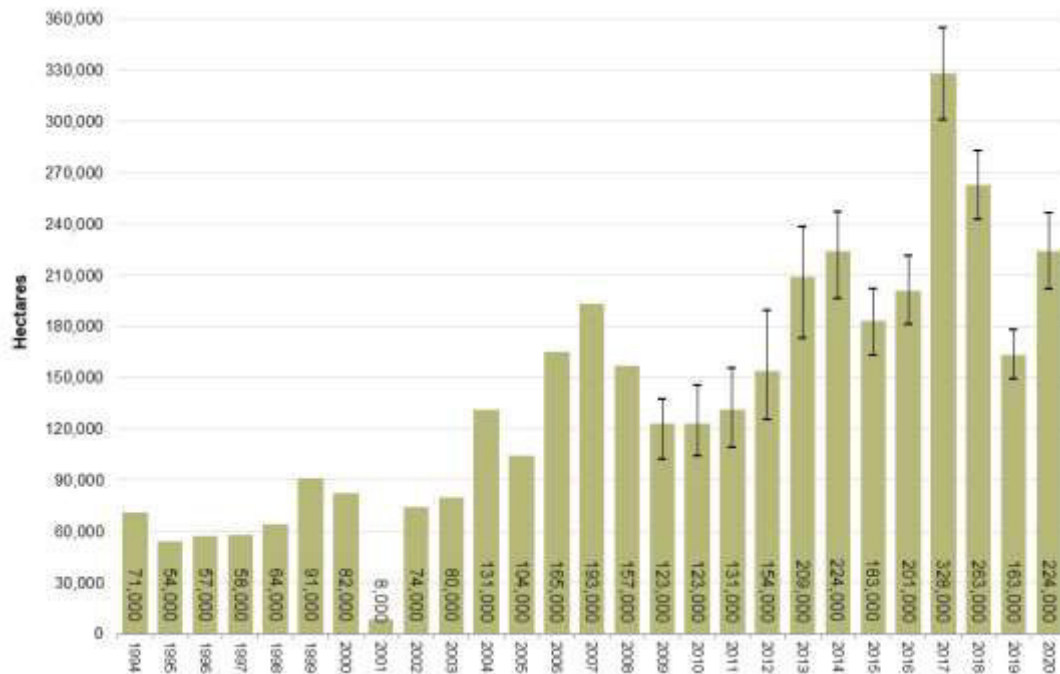
<sup>4</sup> In 2020, opium poppy eradication could not be verified by NSIA/UNODC.

<sup>5</sup> Data on opium yield and production for 2019 were not validated by the Government of Afghanistan and have not been published in a joint NSIA/UNODC report.

## The area under opium poppy cultivation increased by 37% in 2020

The total area under opium poppy cultivation in Afghanistan was estimated at 224,000 hectares (202,000 - 246,000) in 2020, which represents an increase of 37% or 61,000 hectares when compared to 2019.

**Figure 1 Opium poppy cultivation in Afghanistan, 1994-2020 (hectares)**



Sources: MCN/UNODC opium surveys 1994-2018; NSIA/UNODC opium surveys 2019 onwards. The vertical lines represent the upper and lower bounds of the 95% confidence interval.

All regions<sup>6</sup> except the Eastern region saw an increase in opium poppy cultivation in 2020, with the largest relative increases being in the Southern region, followed by the Western, North-eastern, Northern, Central and South-Western regions. Cultivation in the Eastern region reduced by 28%.

In 2020, the number of poppy-free provinces in Afghanistan decreased from 13 to 12. Kapisa lost its poppy-free status.

Hilmand remained the country's major opium poppy cultivating province, followed by Badghis, Kandahar, Uruzgan<sup>7</sup>, Faryab, Farah, Badakhshan, Balkh and Nimroz.

All main opium poppy-growing provinces saw significant increases in area under cultivation. Opium poppy cultivation increased in Badghis (194%), in Faryab (98%), Kandahar and Farah (47%), Nimroz (46%), Badakhshan (36%), Hilmand (27%) and Uruzgan (16%). Decreases were observed in four provinces with lower levels of cultivation, in Kunar (-39%), Nangarhar (-27%), Laghman (-20%), Balkh and Jawzjan provinces (-16%).

In absolute numbers, the largest increases were observed in Hilmand (24,870 ha), Badghis (14,771), Kandahar (6,600 ha) and Faryab (6,462) and the largest decrease in Balkh (1,096 ha).

Table 4, at the end of this report, presents an overview of all provincial estimates.

<sup>6</sup> The regional groupings used in this report are in line with the groupings used in the work of NSIA and are different from those used in earlier reports. See Map 2.

<sup>7</sup> Including Gizab district, a district formally part of Day Kundi province, but since 2014 under the administration of the Governor of Uruzgan province.

**Table 1. Regional distribution of opium poppy cultivation, 2019-2020 (hectares)**

Region	2019 (ha)	2020 (ha)	Change 2019-2020	2019 (ha) as % of total	2020 (ha) as % of total
Central	780	1,011	30%	0%	0.5%
Eastern	4,942	3,543	-28%	3%	2%
North-eastern	4,973	6,967	40%	3%	3%
Northern	17,128	22,760	33%	11%	10%
South-western	118,444	152,935	29%	73%	68%
Southern	123	290	136%	0.08%	0.1%
Western	17,053	36,188	112%	10%	16%
<b>Rounded Total</b>	<b>163,000</b>	<b>224,000</b>	<b>37%</b>	<b>100%</b>	<b>100%</b>

## Eradication of opium poppy in 2020

In 2020, opium poppy eradication could not be verified by NSIA/UNODC.

## Potential opium production was estimated at 6,300 tons in 2020

In 2020, potential opium production in Afghanistan was estimated at 6,300 tons (5,400 - 7,200 tons). The average opium yield was 28.0 kilograms per hectare. The South-western region remained the country's major opium producing region, accounting for 71% of total opium production in Afghanistan.

In 2020, due to COVID-19 related measures, it was not possible for NSIA/UNODC to collect opium yield data in the field. In the absence of the field survey, UNODC and NSIA jointly estimated opium poppy yields using satellite imagery.

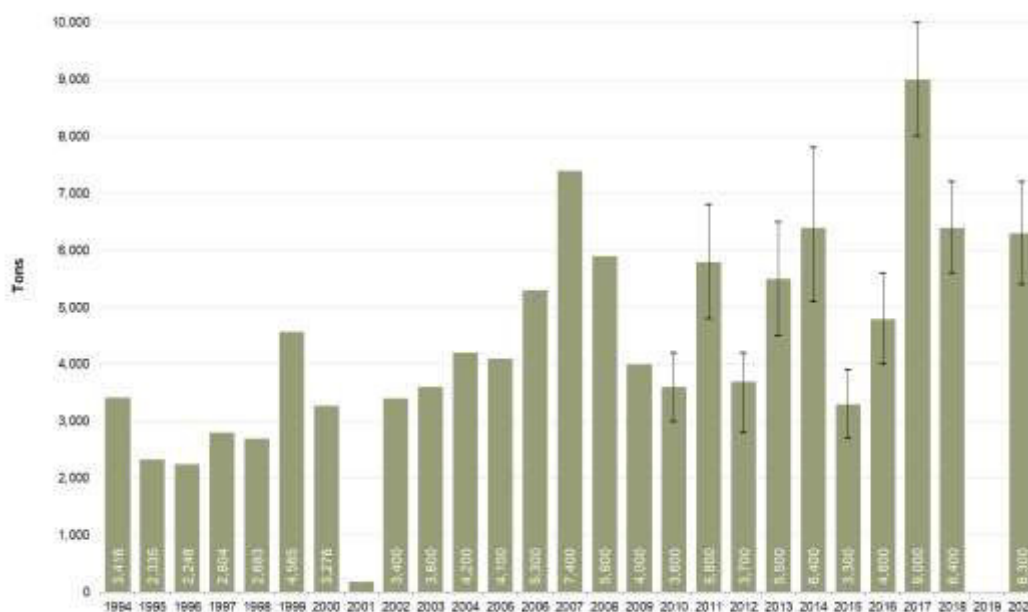
In this approach, a representative sample of opium poppy fields was visually ranked according to the quality of crops on the field. Each value of the rank (low, medium, and high quality) corresponded to a specific range of yields, which was estimated from previous years' yield data per region. For example, previous years' data indicated that poppy fields visually ranked as low quality had yield values between 9 and 12 kg/ha in the Central region. Therefore, opium poppy fields interpreted as low quality in the Central region were assigned those yield values. The procedure was repeated for all rank values, and then average yields were calculated per region, and a weighted average was estimated at national level.

The methodology was tested for accuracy by predicting the average yield of each of the previous years, using the data from all other years, but not of the year being estimated (cross-validation, rotation, or out-of-sample test). The predicted average yields of previous years showed only minor differences of between -4 and 6 percent from the average yields calculated from field data.

**Table 2. Opium yield and potential production, by region, 2020**

REGION	2020 average yield (kg/ha)	Production 2020 (tons)	Production as % of total
Central	34.8	35	1%
Eastern	40.9	145	2%
North	31.0	709	11%
North-eastern	32.3	229	4%
South	41.0	12	0.2%
South-western	29.3	4,479	71%
Western	18.4	667	11%
<b>Weighted national average</b>	<b>28.0</b>	<b>6,300</b>	<b>100%</b>

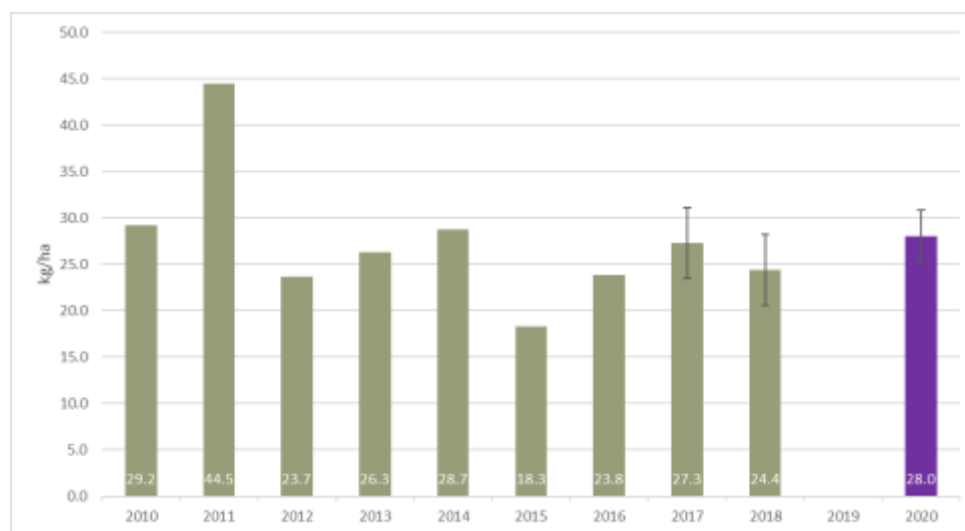
**Figure 2 Potential opium production in Afghanistan, 1994-2020 (tons)**



Sources: MCN/UNODC opium surveys 1994-2018; NSIA/UNODC opium surveys 2020 onwards.

Figures refer to oven-dry opium. The vertical lines represent the upper and lower bounds of the 95% confidence interval. Data on opium yield and production for 2019 were not validated by the Government of Afghanistan and have not been published in a joint NSIA/UNODC report.

**Figure 3. Average opium yield weighted by cultivation, 2010-2020 (kilograms per hectare)**



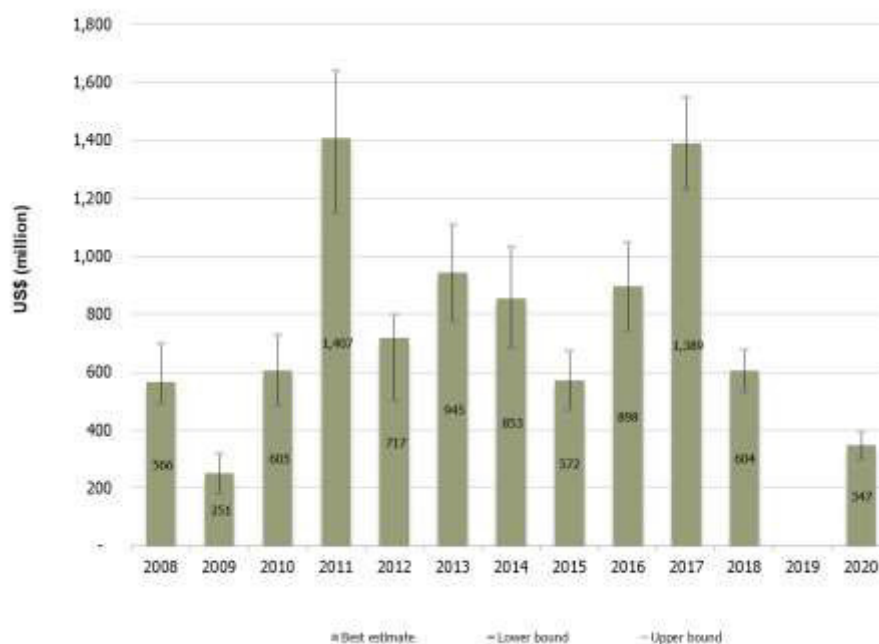
Sources: MCN/UNODC opium surveys 1994-2018; NSIA/UNODC opium surveys 2020 onwards.

In 2020, due to COVID-19 related measures, the annual yield survey could not be conducted. In absence of data from the field, NSIA/UNODC developed a remote sensing based method to estimate yields (see main text). Data on opium yield and production for 2019 were not validated by the Government of Afghanistan and have not been published in a joint NSIA/UNODC report.

## Farm-gate value of the opium production

The farm-gate value of opium production in 2020 was estimated at US\$ 350 (300 – 400) million. The farm-gate value is at its lowest level since 2009, due to opium prices being at their lowest level since beginning of the systematic monitoring.

**Figure 4. Farm-gate value of opium, 2008-2020 (US\$ million)**



Data on opium yield and production for 2019 were not validated by the Government of Afghanistan and have not been published in a joint NSIA/UNODC report. Therefore, no estimate of the farm-gate value was available for 2019.

## Discussion of the results

Opium poppy cultivation in Afghanistan is driven by a multitude of factors. Rule of law related challenges, such as political instability, instability and insecurity caused by insurgency groups, have been found among the main drivers. Socio-economic factors also impact farmers' decisions, for example scarce employment opportunities, lack of quality education and limited access to markets.<sup>8</sup>

In 2020, the area under cultivation was among the four highest ever measured. While area under cultivation presented an increasing trend in the past decade, it has been volatile with strong year-on-year changes in previous years. This makes an interpretation of the increase from 2019 to 2020 challenging. Many different factors may play a role in annual changes, including shocks to the system such as the devastating droughts in 2018 and high seasonal floods in 2019, as well as a deteriorating security situation and increased instability in 2020. The COVID-19 crisis did not affect the 2020 opium season in terms of area cultivated or labor available for harvesting; however, it can be expected that the economic downturn following the pandemic in combination with increasing food prices may lead to further increases in opium poppy cultivation in future years.

A more detailed discussion of the results and an analysis of the factors contributing to changes in area and production in 2020 will be presented in the upcoming reports “Afghanistan opium survey report 2020 – Cultivation and Production” and “Afghanistan opium– Socio-economic analysis 2020”.

<sup>8</sup> A detailed discussion on the drivers of opium poppy cultivation in Afghanistan is presented in the reports on the annual socio-economic surveys conducted by the project in Afghanistan. All reports can be found here: <https://www.unodc.org/unodc/en/crop-monitoring/index.html>



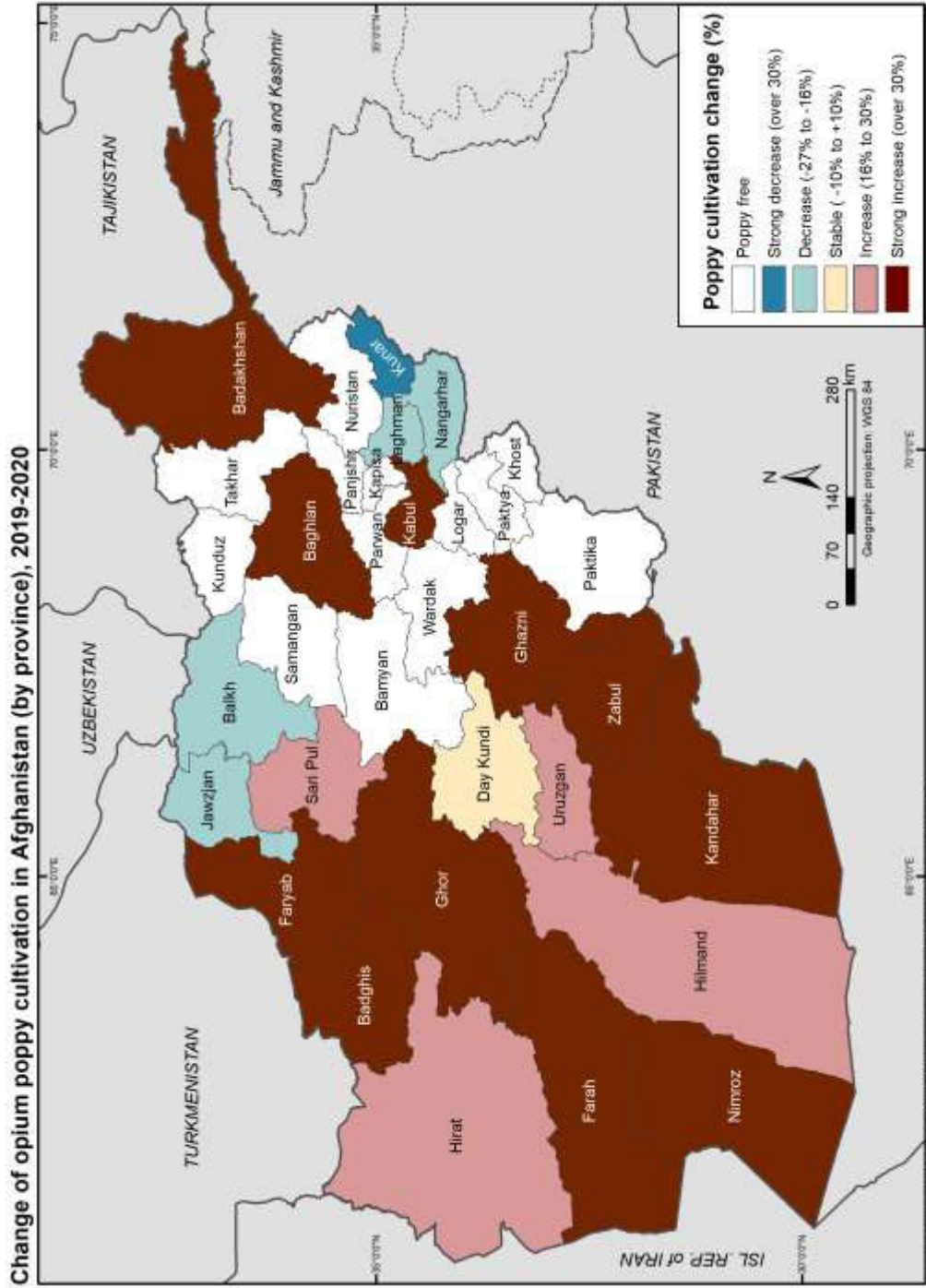
**Table 4. Opium poppy cultivation in Afghanistan 2019-2020 (hectares)**

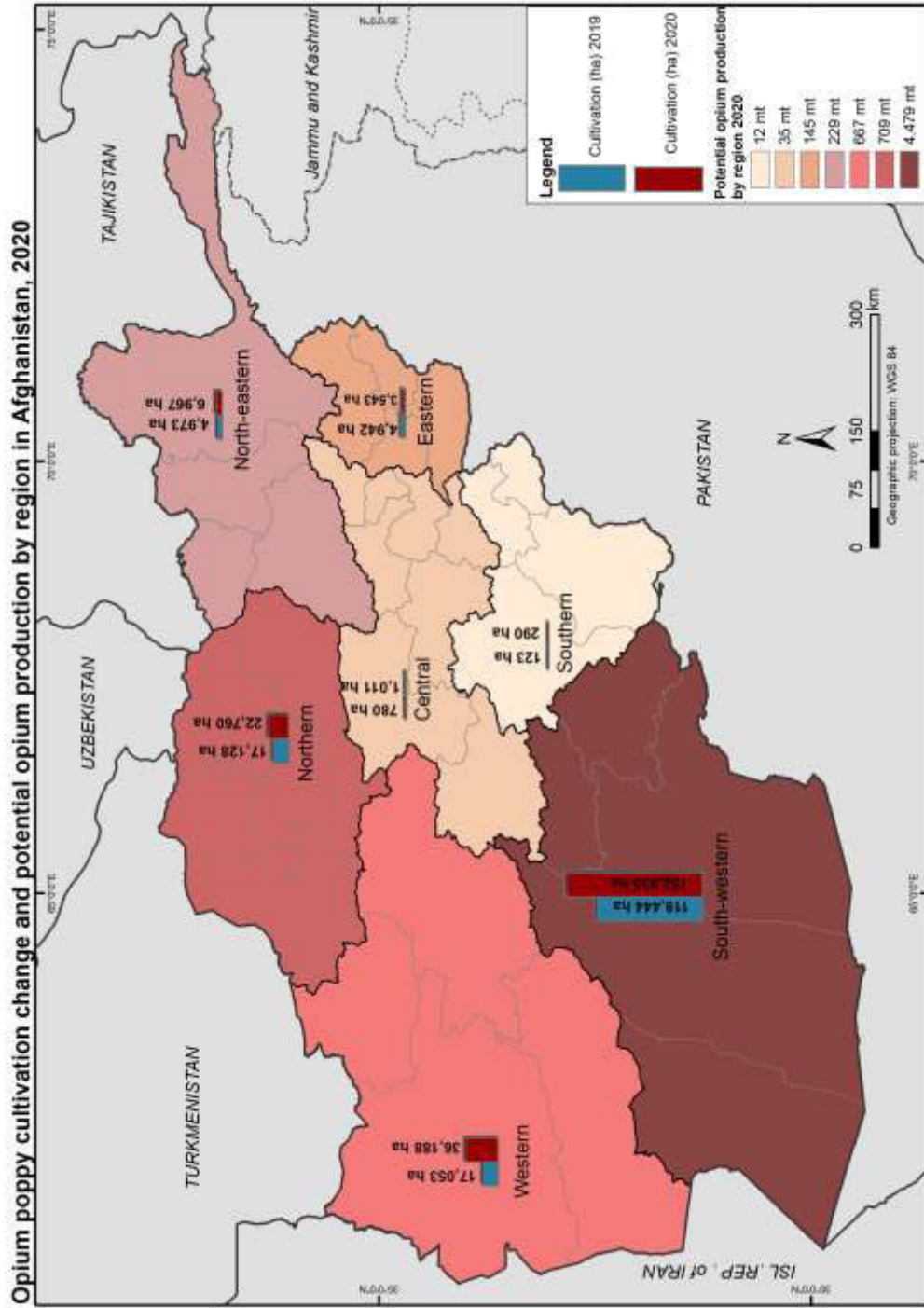
PROVINCE	Cultivation (ha)		Change 2019-2020 (%)	Estimation method 2020
	2019	2020		
Kabul	197	284	+44%	T
Logar	Poppy-free	Poppy-free	NA	T
Panjshir	Poppy-free	Poppy-free	NA	V
Parwan	Poppy-free	Poppy-free	NA	T
Wardak	Poppy-free	Poppy-free	NA	V
Kapisa	Poppy-free	178	NA	T
Bamyan	Poppy-free	Poppy-free	NA	V
Day Kundi*	583	550	-6%	S
<b>Central Region</b>	<b>780</b>	<b>1,011</b>	<b>+30%</b>	
Kunar	967	595	-39%	S
Laghman	908	723	-20%	S
Nangarhar	3,067	2,225	-27%	S
Nuristan	Poppy-free	Poppy-free	NA	T
<b>Eastern Region</b>	<b>4,942</b>	<b>3,543</b>	<b>-28%</b>	
Badakhshan	4,702	6,395	+36%	S
Kunduz	Poppy-free	Poppy-free	NA	T
Takhar	Poppy-free	Poppy-free	NA	T
Baghlan	271	572	+111%	T
<b>North-eastern Region</b>	<b>4,973</b>	<b>6,967</b>	<b>+40%</b>	
Balkh	7,042	5,946	-16%	S
Faryab**	6,621	13,083	+98%	S
Jawzjan	1,332	1,124	-16%	S
Samangan	Poppy-free	Poppy-free	NA	T
Sari Pul	2,134	2,607	+22%	S
<b>Northern Region</b>	<b>17,128</b>	<b>22,760</b>	<b>+33%</b>	
Hilmand	90,727	115,597	+27%	S
Kandahar	13,954	20,555	+47%	S
Uruzgan*	11,578	13,444	+16%	S
Zabul	183	408	+123%	S
Nimroz	2,002	2,931	+46%	S
<b>South Western Region</b>	<b>118,444</b>	<b>152,935</b>	<b>+29%</b>	
Khost	Poppy-free	Poppy-free	NA	V
Paktya	Poppy-free	Poppy-free	NA	V
Ghazni	123	290	+136%	T
Paktika	Poppy-free	Poppy-free	NA	V
<b>Southern Region</b>	<b>123</b>	<b>290</b>	<b>+136%</b>	
Badghis**	7,631	22,402	+194%	S
Farah	7,113	10,483	+47%	S
Ghor	1,960	2,848	+45%	S
Hirat	349	455	+30%	T
<b>Western Region</b>	<b>17,053</b>	<b>36,188</b>	<b>+112%</b>	
<b>Total (rounded)</b>	<b>163,000</b>	<b>224,000</b>	<b>+37%</b>	

Area estimation method: S=remote sensing sample survey, T=remote sensing target survey, V=village sample survey and field observation. A province is defined as poppy-free when it is estimated to have less than 100 hectares of opium poppy cultivation. Percentage changes have been calculated with precise figures.

\* Gizab district of Day Kundi province was considered under Uruzgan province as per presidential decree.

\*\* Ghormach district of Badghis province was considered under Faryab province as per presidential decree.





Source: Government of Afghanistan - National monitoring system implemented by UNODC/INGA.  
 Note: The boundaries and names shown and the designations used on this map do not imply official endorsement or acceptance by the United Nations.  
 The dotted line represents approximately the line of control in Jammu and Kashmir agreed upon by India and Pakistan. The final status of Jammu and Kashmir has not yet been agreed upon by the parties.

## Annex I Indicative district level estimates of opium poppy cultivation, 2005-2020 (Hectares)

Province	District	2010	2011	2012	2013	2014	2015	2016	2017	2018	2019	2020
Badakhshan	Arghanj Khwah	-	-	-	-	-	10	3	11	5	-	1
Badakhshan	Argo	327	617	610	565	2,046	1,273	2,648	3,658	3,828	2,142	3,420
Badakhshan	Baharak	-	-	43	322	41	271	0	0	-	0	0
Badakhshan	Darayim	289	662	898	684	1,282	1,530	1,744	1,957	1,749	1,144	1,422
Badakhshan	Darwaz-i Payin (mamay)	-	-	-	-	-	-	-	-	-	-	-
Badakhshan	Darwaz-i Bala (nesay)	-	-	-	-	-	-	-	-	-	-	-
Badakhshan	Faiz abad (Provincial Center)	10	64	7	48	65	4	1	10	1	-	3
Badakhshan	Eshkashim	-	-	-	-	-	-	-	-	-	-	-
Badakhshan	Jurm	2	43	98	196	85	50	23	46	17	569	564
Badakhshan	Khash	4	46	-	-	-	152	330	640	281	67	72
Badakhshan	Khwahan	-	-	-	5	21	7	40	61	-	8	-
Badakhshan	Kishim	204	73	45	141	117	35	674	1,128	825	380	744
Badakhshan	Kohistan	-	-	2	0	11	8	-	-	-	-	-
Badakhshan	Kuf Ab	-	-	-	0	-	-	-	-	-	-	-
Badakhshan	Kiran wa Munjan	-	-	-	0	-	-	-	-	-	-	-
Badakhshan	Raghistan	-	-	19	9	26	-	44	61	49	21	-
Badakhshan	Shahri Buzurg	3	3	36	148	59	37	4	35	66	7	10
Badakhshan	Shighnan	-	-	-	0	-	-	-	-	-	-	-
Badakhshan	Shiki	-	-	-	0	-	-	-	-	-	-	-
Badakhshan	Shuhada	-	-	12	86	236	-	-	-	-	-	-
Badakhshan	Tagab	-	-	22	36	101	57	167	63	44	6	-
Badakhshan	Tashkan	163	145	73	107	92	595	582	570	697	327	125
Badakhshan	Wakhan	-	-	-	0	-	-	-	-	-	-	-
Badakhshan	Wardooj	1	1	-	0	-	-	10	15	34	8	-
Badakhshan	Yaftal-i-Sufla	97	50	32	18	12	25	23	52	107	26	33
Badakhshan	Yamgan	-	1	-	5	10	-	4	3	-	-	-
Badakhshan	Yawan	-	-	30	-	-	2	2	-	-	-	-
Badakhshan	Zaybak	-	-	-	-	-	-	-	-	-	-	-
<b>Badakhshan Total</b>		<b>1,100</b>	<b>1,705</b>	<b>1,927</b>	<b>2,374</b>	<b>4,204</b>	<b>4,056</b>	<b>6,298</b>	<b>8,311</b>	<b>7,703</b>	<b>4,704</b>	<b>6,395</b>
Badghis	Ab Kamari	16	5	14	24	-	1,996	71	281	208	43	642
Badghis	Ghormach	486	1,485	1,005	2,395	1,009	6,855	17,594	Part of Faryab			
Badghis	Jawand	130	106	187	850	797	683	940	2,303	1,358	503	3,688
Badghis	Muqur	81	9	61	26	47	86	1,062	2,097	324	314	507
Badghis	Bala Murghab	2,055	284	870	-	3,762	1,417	12,372	18,202	4,682	6,225	11,174
Badghis	Qadis	135	92	152	264	57	1,331	3,185	1,802	377	538	6,365
Badghis	Qala-i-Now (Provincial Center)	55	9	75	37	49	23	11	38	26	8	26
<b>Badghis Total</b>		<b>2,958</b>	<b>1,990</b>	<b>2,363</b>	<b>3,596</b>	<b>5,721</b>	<b>12,391</b>	<b>35,234</b>	<b>24,723</b>	<b>6,973</b>	<b>7,631</b>	<b>22,402</b>
Baghlan	Andarab	-	18	5	3	4	8	92	91	54	14	56
Baghlan	Baghlan *	-	-	-	-	-	-	-	-	-	-	-
Baghlan	Baghlan-i-Jadeed	-	-	-	-	-	-	-	-	-	-	-
Baghlan	Burka	-	-	-	4	1	0	4	11	25	0	2
Baghlan	Dahana-i- Ghuri	-	-	-	-	-	-	-	-	-	-	-
Baghlan	Deh Salah	-	113	33	37	60	68	351	473	690	111	223
Baghlan	Dushi	-	-	-	-	-	-	-	-	-	-	-
Baghlan	Firing Wa Gharu	-	-	-	-	-	-	-	-	-	-	-
Baghlan	Gozargah-i-Noor	-	-	-	-	-	-	-	-	-	-	-
Baghlan	Kahmard *	-	-	-	-	-	-	-	-	-	-	-
Baghlan	Khinjan	-	-	-	-	-	-	-	-	-	-	-
Baghlan	Khost Wa Firing	-	-	-	-	-	-	-	-	-	-	-
Baghlan	Khvajah Hijran (Jalgah)	-	-	-	-	-	-	84	57	66	12	30
Baghlan	Nahreen	-	-	-	-	-	-	-	-	-	-	-
Baghlan	Pul-i-Hisar	-	30	139	97	103	104	319	424	242	139	263
Baghlan	Pul-i-Khumri (Provincial Center)	-	-	-	-	-	-	-	-	-	-	-
Baghlan	Talah wa Barfak	-	-	-	-	-	-	-	-	-	-	-
<b>Baghlan Total</b>		<b>p-f</b>	<b>161</b>	<b>177</b>	<b>141</b>	<b>168</b>	<b>180</b>	<b>849</b>	<b>1,057</b>	<b>1,076</b>	<b>275</b>	<b>572</b>
Balkh	Balkh	-	-	-	-	-	-	5	2,334	4,855	2,647	2,030
Balkh	Chahar Bolak	-	-	-	10	-	9	316	4,007	1,515	1,363	1,453
Balkh	Chahar Kent	-	-	-	-	-	-	-	-	-	-	-
Balkh	Chimtal	-	-	-	400	-	195	1,764	5,768	1,974	2,782	2,354
Balkh	Dowlat abad	-	-	-	-	-	-	-	1	7	12	-
Balkh	Dehdadi	-	-	-	-	-	-	-	6	154	125	19
Balkh	Kaldar (Shaharak-i-Hairatan)	-	-	-	-	-	-	-	-	-	-	-
Balkh	Khulm	-	-	-	-	-	-	-	-	-	-	-
Balkh	Kishindeh	-	-	-	-	-	-	-	-	-	-	-
Balkh	Marmul	-	-	-	-	-	-	-	-	-	-	-
Balkh	Mazar-i-Sharif	-	-	-	-	-	-	-	-	-	-	-
Balkh	Nahr-i-Shahi	-	-	-	-	-	-	-	-	-	-	-
Balkh	Sholgurah	-	-	-	-	-	-	-	-	27	113	90
Balkh	Shortepa	-	-	-	-	-	-	-	-	-	-	-
Balkh	Sharak-e-Hayratan	-	-	-	-	-	-	-	-	-	-	-
Balkh	Zari	-	-	-	-	-	-	-	-	-	-	-
<b>Balkh Total</b>		<b>p-f</b>	<b>p-f</b>	<b>p-f</b>	<b>410</b>	<b>p-f</b>	<b>204</b>	<b>2,085</b>	<b>12,116</b>	<b>8,532</b>	<b>7,042</b>	<b>5,946</b>

Province	District	2010	2011	2012	2013	2014	2015	2016	2017	2018	2019	2020	
Bamyan	Bamyan (Provincial Center)	-	-	-	-	-	-	-	-	-	-	-	
Bamyan	Kahmard	-	-	-	-	-	-	-	-	-	-	-	
Bamyan	Panjab	-	-	-	-	-	-	-	-	-	-	-	
Bamyan	Saighan	-	-	-	-	-	-	-	-	-	-	-	
Bamyan	Shebar	-	-	-	-	-	-	-	-	-	-	-	
Bamyan	Waras	-	-	-	-	-	-	-	-	-	-	-	
Bamyan	Yakawlang	-	-	-	-	-	-	-	-	-	-	-	
<b>Bamyan Total</b>		<b>p-f</b>	<b>p-f</b>	<b>p-f</b>	<b>p-f</b>	<b>p-f</b>	<b>p-f</b>	<b>p-f</b>	<b>p-f</b>	<b>p-f</b>	<b>p-f</b>	<b>p-f</b>	
Day Kundi	Gizab	722	621	684	727	Part of Uruzgan							
Day Kundi	Ishtarlay	9	9	9	6	8	16	-	35	34	-	4	
Day Kundi	Kajran	622	153	288	700	320	124	273	442	310	318	315	
Day Kundi	Khedir	5	8	9	4	6	24	6	53	15	-	1	
Day Kundi	Kiti	134	151	14	-	-	13	-	290	74	-	40	
Day Kundi	Mir Amor	19	22	5	12	16	72	15	34	56	9	0	
Day Kundi	Nili (Provincial Center)	5	9	16	3	-	-	13	141	117	33	4	
Day Kundi	Sang-i-Takht	10	15	8	30	150	43	-	47	50	7	16	
Day Kundi	Shahristan	21	13	25	53	87	89	67	466	91	216	170	
<b>Day Kundi Total</b>		<b>1,547</b>	<b>1,003</b>	<b>1,058</b>	<b>1,536</b>	<b>587</b>	<b>381</b>	<b>374</b>	<b>1,508</b>	<b>747</b>	<b>583</b>	<b>550</b>	
Farah	Anar Darah	1	9	3	314	104	-	2	1	1	-	1	
Farah	Bakwah	1,936	800	5,822	8,844	12,651	5,567	1,503	2,040	907	445	723	
Farah	Bala Buluk	2,586	3,157	3,951	1,947	2,730	7,033	2,062	3,490	3,887	3,102	4,548	
Farah	Delaram	4,404	4,263	8,899	Part of Nimroz								
Farah	Farah (Provincial Center)	51	-	129	4,451	4,760	128	72	47	34	5	21	
Farah	Gulistan	2,661	4,565	3,920	3,759	2,000	1,065	841	1,102	558	318	924	
Farah	Khaki-Safed	645	1,103	2,220	1,186	1,726	4,562	2,715	3,998	4,265	1,589	2,445	
Farah	Lash-i-Juwayn	3	6	2	179	27	7	10	8	1	5	5	
Farah	Pur Chaman	2,175	3,512	2,164	230	930	365	315	642	292	-	5	
Farah	PushRod	61	46	505	2,521	2,214	2,192	1,517	1,499	968	1,560	1,810	
Farah	Qala-i-Kah	11	39	117	914	354	186	64	17	3	36	-	
Farah	Shib Koh	18	-	-	149	17	1	-	4	-	54	1	
<b>Farah Total</b>		<b>14,552</b>	<b>17,499</b>	<b>27,733</b>	<b>24,492</b>	<b>27,513</b>	<b>21,106</b>	<b>9,101</b>	<b>12,846</b>	<b>10,916</b>	<b>7,113</b>	<b>10,483</b>	
Faryab	Almar	-	-	-	-	-	-	52	1,448	938	519	1,625	
Faryab	Andkhoy	-	-	-	-	-	-	-	-	-	-	-	
Faryab	Bil Chiragh	-	-	-	-	-	-	1	-	-	-	-	
Faryab	Dowlat abad	-	-	-	-	-	-	-	-	6	84	354	
Faryab	Gurziwan	-	75	-	46	40	108	39	-	214	2	2	
Faryab	Khani ChaharBagh	-	-	-	-	-	-	-	-	-	-	-	
Faryab	Khawajah Sabz Poshi Wali	-	-	-	-	-	-	-	-	27	40	69	
Faryab	Kohistan	-	49	-	65	69	69	89	289	571	38	4	
Faryab	Maimanah	-	-	-	-	-	-	-	-	-	-	-	
Faryab	Pashtun Kot	-	9	-	1	-	-	-	-	587	18	671	
Faryab	Qaram Qul	-	-	-	-	-	-	-	-	-	-	-	
Faryab	Qaisar	-	13	-	46	102	983	2,742	8,294	1,429	221	752	
Faryab	Qurghan	-	-	-	-	-	-	-	-	-	-	-	
Faryab	Shirin Tagab	-	-	-	-	-	-	-	-	468	316	108	
Faryab	Chormach	-	-	-	-	-	-	-	12,766	3,935	5,383	9,497	
<b>Faryab Total</b>		<b>p-f</b>	<b>146</b>	<b>p-f</b>	<b>158</b>	<b>211</b>	<b>1,160</b>	<b>2,923</b>	<b>22,797</b>	<b>8,175</b>	<b>6,621</b>	<b>13,083</b>	
Ghazni	Ab Band	-	-	-	-	-	-	-	-	-	-	-	
Ghazni	Ajristan	-	-	-	-	-	-	-	1,022	370	123	289	
Ghazni	Andar	-	-	-	-	-	-	-	-	-	-	-	
Ghazni	Bahram-e Shahid (Jaghata)	-	-	-	-	-	-	-	-	-	-	-	
Ghazni	Deh Yak	-	-	-	-	-	-	-	-	-	-	-	
Ghazni	Gelan	-	-	-	-	-	-	-	-	-	-	-	
Ghazni	Ghazni (Provincial Center)	-	-	-	-	-	-	-	-	-	-	-	
Ghazni	Giro	-	-	-	-	-	-	-	-	-	-	-	
Ghazni	Jaghata *	-	-	-	-	-	-	-	-	-	-	-	
Ghazni	Jaghuri	-	-	-	-	-	-	-	-	-	-	-	
Ghazni	Khawajah Omari	-	-	-	-	-	-	-	-	-	-	-	
Ghazni	Malistan	-	-	-	-	-	-	-	-	-	-	-	
Ghazni	Muqur	-	-	-	-	-	-	-	-	-	-	-	
Ghazni	Nawa	-	-	-	-	-	-	-	-	-	-	-	
Ghazni	Nawur	-	-	-	-	-	-	-	5	3	-	1	
Ghazni	Qara Bagh	-	-	-	-	-	-	-	-	-	-	-	
Ghazni	Rashidan	-	-	-	-	-	-	-	-	-	-	-	
Ghazni	Waghaz	-	-	-	-	-	-	-	-	-	-	-	
Ghazni	Wali Muhammad Shadid Khugyani	-	-	-	-	-	-	-	-	-	-	-	
Ghazni	Zanakhan	-	-	-	-	-	-	-	-	-	-	-	
<b>Ghazni Total</b>		<b>p-f</b>	<b>p-f</b>	<b>p-f</b>	<b>p-f</b>	<b>p-f</b>	<b>p-f</b>	<b>p-f</b>	<b>1,027</b>	<b>373</b>	<b>123</b>	<b>290</b>	
Ghor	Chaghcharan (Provincial Center)	-	-	71	72	222	397	356	886	1,191	-	490	
Ghor	Chahar Sadah	-	-	-	64	95	-	182	13	-	-	0	
Ghor	Dowlatyar	-	-	5	82	117	154	235	251	390	142	69	
Ghor	Do Lainah	-	-	16	9	9	17	11	83	127	1	13	
Ghor	Lal Wa Sarjangal	-	-	-	-	9	280	-	192	221	139	180	
Ghor	Pasaband	-	-	-	-	-	633	258	1,426	781	907	412	
Ghor	Saghar	-	-	-	-	-	8	-	6	-	-	7	
Ghor	Shahrak	-	-	33	37	41	62	99	214	231	106	59	
Ghor	Taywara	-	-	-	-	-	126	82	1,019	523	574	1,602	
Ghor	Tulak	-	-	-	-	-	44	-	138	112	92	14	
<b>Ghor Total</b>		<b>p-f</b>	<b>p-f</b>	<b>125</b>	<b>264</b>	<b>493</b>	<b>1,721</b>	<b>1,222</b>	<b>4,228</b>	<b>3,574</b>	<b>1,960</b>	<b>2,848</b>	

Province	District	2008	2009	2010	2011	2012	2013	2014	2015	2016	2017	2018
Bamyan	Bamyan (Provincial Center)	-	-	-	-	-	-	-	-	-	-	-
Bamyan	Kahmard	-	-	-	-	-	-	-	-	-	-	-
Bamyan	Panjab	-	-	-	-	-	-	-	-	-	-	-
Bamyan	Saighan	-	-	-	-	-	-	-	-	-	-	-
Bamyan	Shebar	-	-	-	-	-	-	-	-	-	-	-
Bamyan	Waras	-	-	-	-	-	-	-	-	-	-	-
Bamyan	Yakawlang	-	-	-	-	-	-	-	-	-	-	-
<b>Bamyan Total</b>		<b>p-f</b>	<b>p-f</b>	<b>p-f</b>	<b>p-f</b>	<b>p-f</b>	<b>p-f</b>	<b>p-f</b>	<b>p-f</b>	<b>p-f</b>	<b>p-f</b>	<b>p-f</b>
Day Kundi	Gizab	665	810	722	621	684	727					
Day Kundi	Ishtarlay	214	239	9	9	9	6	8	16	-	35	34
Day Kundi	Kajran	357	704	622	153	288	700	320	124	273	442	310
Day Kundi	Khedir	289	160	5	8	9	4	6	24	6	53	15
Day Kundi	Kiti	168	284	134	151	14	-	-	13	-	290	74
Day Kundi	Mir Amor	281	703	19	22	5	12	16	72	15	34	56
Day Kundi	Nili (Provincial Center)	214	5	5	9	16	3	-	-	13	141	117
Day Kundi	Sang-i-Takht	1	68	10	15	8	30	150	43	-	47	50
Day Kundi	Shahristan	85	29	21	13	25	53	87	89	67	466	91
<b>Day Kundi Total</b>		<b>2,273</b>	<b>3,002</b>	<b>1,547</b>	<b>1,003</b>	<b>1,058</b>	<b>1,536</b>	<b>587</b>	<b>381</b>	<b>374</b>	<b>1,508</b>	<b>747</b>
Farah	Anar Darah	239	79	1	9	3	314	104	-	2	1	1
Farah	Bakwah	3,090	3,570	1,936	800	5,822	8,844	12,651	5,567	1,503	2,040	907
Farah	Bala Buluk	1,509	2,705	2,586	3,157	3,951	1,947	2,730	7,033	2,062	3,490	3,887
Farah	Delaram	-	3,011	4,404	4,263	8,899	Part of Nimroz					
Farah	Farah (Provincial Center)	1,013	1,142	51	-	129	4,451	4,760	128	72	47	34
Farah	Gulistan	4,756	1,355	2,661	4,565	3,920	3,759	2,000	1,065	841	1,102	558
Farah	Khaki-Safed	609	232	645	1,103	2,220	1,186	1,726	4,562	2,715	3,998	4,265
Farah	Lash-i-Juwayn	109	45	3	6	2	179	27	7	10	8	1
Farah	Pur Chaman	1,046	96	2,175	3,512	2,164	230	930	365	315	642	292
Farah	PushRod	1,588	46	61	46	505	2,521	2,214	2,192	1,517	1,499	968
Farah	Qala-i-Kah	888	47	11	39	117	914	354	186	64	17	3
Farah	Shib Koh	163	77	18	-	-	149	17	1	-	4	-
<b>Farah Total</b>		<b>15,010</b>	<b>12,405</b>	<b>14,552</b>	<b>17,499</b>	<b>27,733</b>	<b>24,492</b>	<b>27,513</b>	<b>21,106</b>	<b>9,101</b>	<b>12,846</b>	<b>10,916</b>
Faryab	Almar	-	-	-	-	-	-	-	-	52	1,448	938
Faryab	Andkhoy	-	-	-	-	-	-	-	-	-	-	-
Faryab	Bil Chiragh	102	-	-	-	-	-	-	-	1	-	-
Faryab	Dowlat abad	-	-	-	-	-	-	-	-	-	-	6
Faryab	Gurziwan	-	-	-	75	-	46	40	108	39	-	214
Faryab	Khani ChaharBagh	-	-	-	-	-	-	-	-	-	-	-
Faryab	Khvajah Sabz Poshi Wali	-	-	-	-	-	-	-	-	-	-	27
Faryab	Kohistan	10	-	-	49	-	65	69	69	89	289	571
Faryab	Maimanah	10	-	-	-	-	-	-	-	-	-	-
Faryab	Pashtun Kot	-	-	-	9	-	1	-	-	-	-	587
Faryab	Qaram Qul	-	-	-	-	-	-	-	-	-	-	-
Faryab	Qaisar	168	-	-	13	-	46	102	983	2,742	8,294	1,429
Faryab	Qurghan	-	-	-	-	-	-	-	-	-	-	-
Faryab	Shirin Tagab	-	-	-	-	-	-	-	-	-	-	468
Faryab	Ghormach	-	-	-	-	-	-	-	-	-	12,766	3,935
<b>Faryab Total</b>		<b>291</b>	<b>p-f</b>	<b>p-f</b>	<b>146</b>	<b>p-f</b>	<b>158</b>	<b>211</b>	<b>1,160</b>	<b>2,923</b>	<b>22,797</b>	<b>8,175</b>
Ghazni	Ab Band	-	-	-	-	-	-	-	-	-	-	-
Ghazni	Ajristan	-	-	-	-	-	-	-	-	-	1,022	370
Ghazni	Andar	-	-	-	-	-	-	-	-	-	-	-
Ghazni	Bahram-e Shahid (Jaghata)	-	-	-	-	-	-	-	-	-	-	-
Ghazni	Deh Yak	-	-	-	-	-	-	-	-	-	-	-
Ghazni	Gelan	-	-	-	-	-	-	-	-	-	-	-
Ghazni	Ghazni (Provincial Center)	-	-	-	-	-	-	-	-	-	-	-
Ghazni	Giro	-	-	-	-	-	-	-	-	-	-	-
Ghazni	Jaghata *	-	-	-	-	-	-	-	-	-	-	-
Ghazni	Jaghuri	-	-	-	-	-	-	-	-	-	-	-
Ghazni	Khvajah Omari	-	-	-	-	-	-	-	-	-	-	-
Ghazni	Malistan	-	-	-	-	-	-	-	-	-	-	-
Ghazni	Muqur	-	-	-	-	-	-	-	-	-	-	-
Ghazni	Nawa	-	-	-	-	-	-	-	-	-	-	-
Ghazni	Nawur	-	-	-	-	-	-	-	-	-	5	3
Ghazni	Qara Bagh	-	-	-	-	-	-	-	-	-	-	-
Ghazni	Rashidan	-	-	-	-	-	-	-	-	-	-	-
Ghazni	Waghaz	-	-	-	-	-	-	-	-	-	-	-
Ghazni	Wali Muhammad Shadid Khugyan	-	-	-	-	-	-	-	-	-	-	-
Ghazni	Zanakhan	-	-	-	-	-	-	-	-	-	-	-
<b>Ghazni Total</b>		<b>p-f</b>	<b>p-f</b>	<b>p-f</b>	<b>p-f</b>	<b>p-f</b>	<b>p-f</b>	<b>p-f</b>	<b>p-f</b>	<b>p-f</b>	<b>1,027</b>	<b>373</b>
Ghor	Chaghcharan (Provincial Center)	-	-	-	-	71	72	222	397	356	886	1,191
Ghor	Chahar Sadah	-	-	-	-	-	64	95	-	182	13	-
Ghor	Dowlatyar	-	-	-	-	5	82	117	154	235	251	390
Ghor	Do Lainah	-	-	-	-	16	9	9	17	11	83	127
Ghor	Lal Wa Sarjangal	-	-	-	-	-	-	9	280	-	192	221
Ghor	Pasaband	-	-	-	-	-	-	-	633	258	1,426	781
Ghor	Saghar	-	-	-	-	-	-	-	8	-	6	-
Ghor	Shahrak	-	-	-	-	33	37	41	62	99	214	231
Ghor	Taywara	-	-	-	-	-	-	-	126	82	1,019	523
Ghor	Tulak	-	-	-	-	-	-	-	44	-	138	112
<b>Ghor Total</b>		<b>p-f</b>	<b>p-f</b>	<b>p-f</b>	<b>p-f</b>	<b>125</b>	<b>264</b>	<b>493</b>	<b>1,721</b>	<b>1,222</b>	<b>4,228</b>	<b>3,574</b>

Province	District	2010	2011	2012	2013	2014	2015	2016	2017	2018	2019	2020	
Hilmand	Baghran	4,049	6,739	2,788	4,037	4,553	2,190	4,408	4,318	3,255	1,857	2,340	
Hilmand	Dishu	119	481	1,601	4,161	3,338	3,528	4,391	6,675	5,772	105	560	
Hilmand	Garmsir	6,333	4,342	1,246	4,527	8,394	10,406	10,574	13,211	11,665	6,388	9,372	
Hilmand	Kajaki	3,299	6,435	9,065	10,611	10,836	11,564	8,490	14,447	14,782	9,861	10,831	
Hilmand	Lashkargah (Provincial Center)	2,014	649	1,469	1,828	2,562	2,089	1,935	4,669	3,620	2,039	1,583	
Hilmand	Musa Qala	8,415	10,340	7,235	10,586	8,320	6,974	6,112	13,474	15,522	12,444	15,624	
Hilmand	Nad Ali	18,646	5,413	8,038	19,136	22,256	17,022	12,429	27,398	21,396	15,091	24,366	
Hilmand	Marja	-	2,629	2,046	part of Nad Ali								
Hilmand	Naher-i-Saraj	11,517	12,638	22,468	18,701	16,984	11,759	11,050	18,464	17,981	14,733	17,365	
Hilmand	Nowzad	2,845	4,694	10,822	11,944	9,839	5,576	7,256	16,972	20,366	13,848	15,798	
Hilmand	Nawa-i-Barukzai	1,328	1,610	41	97	319	2,176	559	4,064	444	561	1,315	
Hilmand	Reg-i-Khan Nishin	2,292	2,120	2,718	5,912	6,781	7,352	8,352	10,251	10,445	2,235	4,195	
Hilmand	Sangin Qala	2,631	2,941	2,882	3,709	5,349	3,731	2,955	5,667	5,421	4,194	4,386	
Hilmand	Washer	1,555	2,275	2,757	5,445	3,710	2,076	1,759	4,409	6,128	7,371	7,863	
<b>Hilmand Total</b>		<b>65,045</b>	<b>63,307</b>	<b>75,176</b>	<b>100,693</b>	<b>103,240</b>	<b>86,443</b>	<b>80,273</b>	<b>144,018</b>	<b>136,798</b>	<b>90,727</b>	<b>115,597</b>	
Hirat	Adraskan	-	-	-	3	10	5	1	0	1	0	4	
Hirat	Chiisht-i-Sharif	-	-	-	-	-	-	-	-	-	-	-	
Hirat	Fersi	-	-	-	-	-	-	-	-	-	-	-	
Hirat	Choryan	-	-	-	-	-	-	-	-	-	-	-	
Hirat	Gulran	-	-	-	-	-	-	-	-	8	-	-	
Hirat	Guzara	-	-	-	-	-	-	-	-	1	0	-	
Hirat	Hirat	-	-	-	-	-	-	-	-	-	-	-	
Hirat	Enjil	-	-	-	-	-	-	-	-	-	-	-	
Hirat	Karukh	-	-	-	-	-	-	-	-	-	-	-	
Hirat	Kohsan	-	-	-	-	-	-	-	-	-	-	-	
Hirat	Kushk (Rabat-i-Sangi)	-	-	-	-	-	-	-	575	394	284	236	
Hirat	Kusk-i-Kohnah	-	-	-	-	-	-	-	11	-	-	-	
Hirat	Obe	-	-	-	-	-	-	-	-	28	19	52	
Hirat	Pashtun Zarghun	-	-	-	-	-	-	-	-	65	7	65	
Hirat	Shindand	360	366	1,080	949	729	280	207	517	98	57	98	
Hirat	Zendah Jan	-	-	-	-	-	-	-	-	-	-	-	
<b>Hirat Total</b>		<b>360</b>	<b>366</b>	<b>1,080</b>	<b>952</b>	<b>738</b>	<b>285</b>	<b>208</b>	<b>1,104</b>	<b>595</b>	<b>368</b>	<b>455</b>	
Jawzjan	Aqchah	-	-	-	-	-	-	-	20	15	72	10	
Jawzjan	Darzab	-	-	-	-	-	-	85	327	73	267	242	
Jawzjan	Faizabad	-	-	-	-	-	-	7	396	17	72	30	
Jawzjan	Khamyab	-	-	-	-	-	-	-	-	-	-	-	
Jawzjan	Khanaqa	-	-	-	-	-	-	-	8	-	7	12	
Jawzjan	Khawajah DuKoh	-	-	-	-	-	-	-	10	-	16	2	
Jawzjan	Mardyan	-	-	-	-	-	-	-	399	12	13	4	
Jawzjan	Mingajik	-	-	-	-	-	-	-	37	-	33	3	
Jawzjan	Qarqin	-	-	-	-	-	-	-	6	-	4	4	
Jawzjan	Qush Tepah	-	-	-	-	-	-	316	1,168	121	620	863	
Jawzjan	Sheberghan (Provincial Center)	-	-	-	-	-	-	1	867	100	228	156	
<b>Jawzjan Total</b>		<b>p-f</b>	<b>p-f</b>	<b>p-f</b>	<b>p-f</b>	<b>p-f</b>	<b>p-f</b>	<b>409</b>	<b>3,237</b>	<b>338</b>	<b>1,332</b>	<b>1,124</b>	
Kabul	Bagrami	-	-	-	-	-	-	-	-	-	-	-	
Kabul	Chahar Asyab	-	-	-	-	-	-	-	-	-	-	-	
Kabul	DehSabz	-	-	-	-	-	-	-	-	-	-	-	
Kabul	Farzab	-	-	-	-	-	-	-	-	-	-	-	
Kabul	Gulara	-	-	-	-	-	-	-	-	-	-	-	
Kabul	Estalef	-	-	-	-	-	-	-	-	-	-	-	
Kabul	Kabul	-	-	-	-	-	-	-	-	-	-	-	
Kabul	Kalakan	-	-	-	-	-	-	-	-	-	-	-	
Kabul	Khak-i-Jabar	-	-	-	-	-	-	-	-	-	-	-	
Kabul	Mir Bacha Kot	-	-	-	-	-	-	-	-	-	-	-	
Kabul	Musahi	-	-	-	-	-	-	-	-	-	-	-	
Kabul	Paghman	-	-	-	-	-	-	-	-	-	-	-	
Kabul	Qara Bagh	-	-	-	-	-	-	-	-	-	-	-	
Kabul	Shakar Dara	-	-	-	-	-	-	-	-	-	-	-	
Kabul	Surubi	152	220	120	298	233	321	398	435	484	199	284	
<b>Kabul Total</b>		<b>152</b>	<b>220</b>	<b>120</b>	<b>298</b>	<b>233</b>	<b>321</b>	<b>398</b>	<b>435</b>	<b>484</b>	<b>199</b>	<b>284</b>	
Kandahar	Arghandab	22	84	114	18	512	247	381	1,183	832	218	236	
Kandahar	Arghistan	7	42	90	155	1,515	178	58	16	648	16	-	
Kandahar	Daman	-	-	-	-	1,227	37	43	157	106	1	145	
Kandahar	Chorak	1,466	1,165	952	676	269	691	565	573	494	800	1,362	
Kandahar	Kandahar (Provincial Center)	108	262	11	46	-	56	74	113	466	12	5	
Kandahar	Khakrez	1,215	1,190	794	1,006	867	433	459	416	360	482	871	
Kandahar	Maruf	33	31	28	49	275	8	91	408	84	33	6	
Kandahar	Maiwand	9,966	10,114	12,690	16,382	16,228	9,112	7,287	9,284	8,389	7,463	10,812	
Kandahar	Miya Neshin	44	45	30	162	632	4	9	410	841	-	22	
Kandahar	Nesh	2,842	2,096	620	1,057	405	1,065	1,986	2,257	2,397	1,418	2,081	
Kandahar	Panjwayee	2,982	4,914	4,780	984	3,315	1,735	1,565	2,141	1,689	783	1,010	
Kandahar	Reg	-	-	-	-	-	-	-	-	-	-	-	
Kandahar	Shah Wali Kot	813	615	242	474	1,471	541	818	1,568	675	124	810	
Kandahar	Shorabak	-	-	-	102	-	-	-	-	-	-	-	
Kandahar	Spin Boldak	1,359	1,368	121	207	1,889	2,027	1,857	1,880	1,281	41	30	
Kandahar	Zhire	4,978	5,288	3,867	7,017	5,108	4,886	5,282	7,605	5,147	2,561	3,166	
<b>Kandahar Total</b>		<b>25,835</b>	<b>27,213</b>	<b>24,341</b>	<b>28,335</b>	<b>33,713</b>	<b>21,020</b>	<b>20,475</b>	<b>28,010</b>	<b>23,410</b>	<b>13,954</b>	<b>20,555</b>	

Province	District	2010	2011	2012	2013	2014	2015	2016	2017	2018	2019	2020
Kapisa	AlaSai	-	3	34	33	125	71	103	254	137	-	18
Kapisa	Hisah-i-Awal Kohistan	-	-	-	-	-	-	-	-	-	-	-
Kapisa	Hisah-i-Duwumi Kohistan	-	-	-	-	-	-	-	-	-	-	31
Kapisa	Koh Band	-	9	16	20	46	10	25	29	16	-	12
Kapisa	Kohistan	-	-	-	-	-	-	-	-	-	-	-
Kapisa	Mahmood-i-Raqi (Provincial Center)	-	-	-	1	-	-	-	-	-	-	-
Kapisa	Nijrab	-	14	21	20	30	21	26	57	25	-	9
Kapisa	Tagab	-	155	219	508	270	358	454	628	207	-	108
<b>Kapisa Total</b>		<b>p-f</b>	<b>181</b>	<b>290</b>	<b>582</b>	<b>472</b>	<b>460</b>	<b>608</b>	<b>968</b>	<b>386</b>	<b>p-f</b>	<b>178</b>
Khost	Bak	-	-	-	-	-	-	-	-	-	-	-
Khost	Curbuz	-	-	-	-	-	-	-	-	-	-	-
Khost	Jaji Maidan	-	-	-	-	-	-	-	-	-	-	-
Khost	Khost Matun (Provincial Center)	-	-	-	-	-	-	-	-	-	-	-
Khost	Manduzay (Ismyel Khel)	-	-	-	-	-	-	-	-	-	-	-
Khost	Musa Khel (Mangal)	-	-	-	-	-	-	-	-	-	-	-
Khost	NadirShah Kot	-	-	-	-	-	-	-	-	-	-	-
Khost	Qalandar	-	-	-	-	-	-	-	-	-	-	-
Khost	Sabari (Yaqubi)	-	-	-	-	-	-	-	-	-	-	-
Khost	Shamul (Dzadran)	-	-	-	-	-	-	-	-	-	-	-
Khost	Spera	-	-	-	-	-	-	-	-	-	-	-
Khost	Tanay	-	-	-	-	-	-	-	-	-	-	-
Khost	Terayzai (Ali Sher)	-	-	-	-	-	-	-	-	-	-	-
<b>Khost Total</b>		<b>p-f</b>	<b>p-f</b>	<b>p-f</b>	<b>p-f</b>	<b>p-f</b>	<b>p-f</b>	<b>p-f</b>	<b>p-f</b>	<b>p-f</b>	<b>p-f</b>	<b>p-f</b>
Kunar	Asad Abad (Provincial center)	-	-	61	342	209	1	1	0	2	57	36
Kunar	Bar Kunar (Asmar)	7	18	62	83	57	58	73	112	79	62	25
Kunar	Chapa Dara	12	42	-	-	-	-	4	5	7	1	1
Kunar	Dangam	-	43	30	46	46	28	15	140	134	62	-
Kunar	Dara-i-Pech	5	170	298	254	82	30	39	128	97	24	5
Kunar	Ghazi Abad	4	13	-	-	-	5	30	31	103	29	4
Kunar	Khas Kunar	-	-	57	79	21	116	36	127	305	278	41
Kunar	Mara warah	-	2	4	1	-	28	11	1	13	49	12
Kunar	Narang wa Badil	1	1	41	22	4	5	31	58	12	1	1
Kunar	Nari	-	-	21	18	7	20	25	26	50	11	0
Kunar	Noor Gal	20	20	101	-	79	9	241	346	100	2	5
Kunar	Sar Kani	-	-	14	25	-	476	359	282	427	305	374
Kunar	Shigal wa Sheltan	73	102	459	212	155	71	242	182	212	85	91
Kunar	Sawkai	33	30	124	-	50	8	6	14	11	-	-
Kunar	Watapoor	-	137	7	46	45	132	163	183	180	0	-
<b>Kunar Total</b>		<b>155</b>	<b>578</b>	<b>1,279</b>	<b>1,127</b>	<b>754</b>	<b>987</b>	<b>1,276</b>	<b>1,634</b>	<b>1,732</b>	<b>967</b>	<b>595</b>
Kunduz	Ali Abad	-	-	-	-	-	-	-	-	-	-	-
Kunduz	Dashti-i-Archi	-	-	-	-	-	-	-	-	-	-	-
Kunduz	Chahar Darah	-	-	-	-	-	-	-	-	-	-	-
Kunduz	Hazzati Imam Sahib	-	-	-	-	-	-	-	-	-	-	-
Kunduz	Khanabad	-	-	-	-	-	-	-	-	-	-	-
Kunduz	Kunduz (Provincial Center)	-	-	-	-	-	-	-	-	-	-	-
Kunduz	Qala-i-Zal	-	-	-	-	-	-	-	-	-	-	-
<b>Kunduz Total</b>		<b>p-f</b>	<b>p-f</b>	<b>p-f</b>	<b>p-f</b>	<b>p-f</b>	<b>p-f</b>	<b>p-f</b>	<b>p-f</b>	<b>p-f</b>	<b>p-f</b>	<b>p-f</b>
Laghman	Alingar	48	343	303	503	477	277	546	575	442	141	171
Laghman	Alisheng	65	124	335	472	278	285	471	962	881	408	484
Laghman	Dowlat Shah	31	52	158	142	5	90	180	301	250	123	15
Laghman	Mehterlam (Provincial Center)	90	104	69	119	137	123	175	281	319	189	-
Laghman	Qarghayee	-	-	12	-	5	4	8	137	200	47	53
<b>Laghman Total</b>		<b>234</b>	<b>624</b>	<b>877</b>	<b>1,236</b>	<b>901</b>	<b>779</b>	<b>1,380</b>	<b>2,257</b>	<b>2,092</b>	<b>908</b>	<b>723</b>
Logar	Azra	-	-	-	-	-	-	-	-	-	-	-
Logar	Baraki Barak	-	-	-	-	-	-	-	-	-	-	-
Logar	Charkh	-	-	-	-	-	-	-	-	-	-	-
Logar	Kharwar	-	-	-	-	-	-	-	-	-	-	-
Logar	Khoshi	-	-	-	-	-	-	-	-	-	-	-
Logar	Muhammad Aghah	-	-	-	-	-	-	-	-	-	-	-
Logar	Pul-i-Alam	-	-	-	-	-	-	-	-	-	-	-
<b>Logar Total</b>		<b>p-f</b>	<b>p-f</b>	<b>p-f</b>	<b>p-f</b>	<b>p-f</b>	<b>p-f</b>	<b>p-f</b>	<b>p-f</b>	<b>p-f</b>	<b>p-f</b>	<b>p-f</b>



Province	District	2010	2011	2012	2013	2014	2015	2016	2017	2018	2019	2020
Nangarhar	Achin	10	254	580	2,224	3,004	1,090	698	1,364	1,692	0	2
Nangarhar	Bati Kot	-	-	-	-	-	4	193	757	952	2	1
Nangarhar	Behsud	-	-	-	-	-	-	-	-	-	-	-
Nangarhar	Chaparhar	-	12	19	1,452	1,866	1,504	2,472	2,337	402	50	14
Nangarhar	Darah-i-Noor	-	-	-	-	162	11	326	700	866	89	99
Nangarhar	Deh Bala	-	-	14	-	-	275	55	112	8	6	2
Nangarhar	Dur Baba	-	-	-	-	-	-	-	-	-	-	-
Nangarhar	Goshra	-	-	-	19	95	6	3	-	44	43	21
Nangarhar	Hesarak	5	178	89	-	775	424	581	937	1,002	81	110
Nangarhar	Jalalabad	-	-	-	-	-	-	-	-	-	-	-
Nangarhar	Kama	-	-	-	-	14	-	-	-	-	-	-
Nangarhar	Khugyani	131	557	1,481	5,746	4,755	2,996	4,204	4,728	2,958	396	1,429
Nangarhar	Kot	-	-	-	993	2,040	872	80	49	972	33	-
Nangarhar	Kuzkunar	-	-	-	-	-	-	1	133	299	-	-
Nangarhar	Lalpoor	59	185	-	798	712	218	344	728	171	184	18
Nangarhar	Mohmand Dara	1	1	-	155	175	19	213	505	595	45	13
Nangarhar	Nazyan	-	-	-	-	-	-	-	-	-	-	-
Nangarhar	Pachir wagam	-	3	418	1,672	1,588	1,066	1,160	1,231	1,130	-	17
Nangarhar	Rodat	-	-	-	11	946	389	1,426	1,802	2,126	886	248
Nangarhar	Sherzad	513	1,510	550	2,650	1,876	884	1,393	1,534	1,499	730	173
Nangarhar	Shinwar	-	-	-	-	-	70	379	1,245	1,865	464	17
Nangarhar	Surkh Rud	-	-	-	-	219	188	818	816	594	59	61
<b>Nangarhar Total</b>		<b>719</b>	<b>2,700</b>	<b>3,151</b>	<b>15,719</b>	<b>18,227</b>	<b>10,016</b>	<b>14,344</b>	<b>18,976</b>	<b>17,177</b>	<b>3,067</b>	<b>2,228</b>
Nimroz	Asl-i-Chakhansur	183	855	98	9	-	57	34	41	-	-	-
Nimroz	Chahar Burjak	144	181	696	511	250	698	1,305	4,167	3,562	91	179
Nimroz	Kang	10	31	36	-	-	-	-	2	-	-	-
Nimroz	Khash Rod	1,621	1,323	2,536	15,731	14,334	8,046	3,962	7,256	5,552	1,911	2,752
Nimroz	Zaranj (Provincial Center)	81	102	442	1	-	4	2	0	-	-	-
<b>Nimroz Total</b>		<b>2,039</b>	<b>2,493</b>	<b>3,808</b>	<b>16,252</b>	<b>14,584</b>	<b>8,805</b>	<b>5,303</b>	<b>11,466</b>	<b>9,115</b>	<b>2,002</b>	<b>2,931</b>
Nuristan	Barg-i-Matal	-	-	-	-	-	-	-	-	-	-	-
Nuristan	Du Ab	-	-	-	-	-	-	-	-	-	-	-
Nuristan	Kamdes h	-	-	-	-	-	-	-	-	-	-	-
Nuristan	Mandol	-	-	-	-	-	-	-	4	-	-	-
Nuristan	Noor Gram	-	-	-	-	-	-	-	117	-	-	-
Nuristan	Nuristan Paroon (Provincial Center)	-	-	-	-	-	-	-	-	-	-	-
Nuristan	Wama	-	-	-	-	-	-	-	-	-	-	-
Nuristan	Waygal	-	-	-	-	-	-	-	-	-	-	-
<b>Nuristan Total</b>		<b>p-f</b>	<b>p-f</b>	<b>p-f</b>	<b>p-f</b>	<b>p-f</b>	<b>p-f</b>	<b>p-f</b>	<b>121</b>	<b>p-f</b>	<b>p-f</b>	<b>p-f</b>
Paktika	Barmal	-	-	-	-	-	-	-	-	-	-	-
Paktika	Drah wa Khwoshamand	-	-	-	-	-	-	-	-	-	-	-
Paktika	Giyon	-	-	-	-	-	-	-	-	-	-	-
Paktika	Gomal	-	-	-	-	-	-	-	-	-	-	-
Paktika	Jani Khel	-	-	-	-	-	-	-	-	-	-	-
Paktika	Mata Khan	-	-	-	-	-	-	-	-	-	-	-
Paktika	Nika	-	-	-	-	-	-	-	-	-	-	-
Paktika	Omna	-	-	-	-	-	-	-	-	-	-	-
Paktika	Sar Rowza	-	-	-	-	-	-	-	-	-	-	-
Paktika	Sharan (Provincial Center)	-	-	-	-	-	-	-	-	-	-	-
Paktika	Sarubi	-	-	-	-	-	-	-	-	-	-	-
Paktika	Turwo	-	-	-	-	-	-	-	-	-	-	-
Paktika	Urgun	-	-	-	-	-	-	-	-	-	-	-
Paktika	Wazahkhwah	-	-	-	-	-	-	-	-	-	-	-
Paktika	Wor Mamay	-	-	-	-	-	-	-	-	-	-	-
Paktika	Yahya Khel	-	-	-	-	-	-	-	-	-	-	-
Paktika	Yosuf Khel	-	-	-	-	-	-	-	-	-	-	-
Paktika	Zarghun Shahr	-	-	-	-	-	-	-	-	-	-	-
Paktika	Ziruk	-	-	-	-	-	-	-	-	-	-	-
<b>Paktika Total</b>		<b>p-f</b>	<b>p-f</b>	<b>p-f</b>	<b>p-f</b>	<b>p-f</b>	<b>p-f</b>	<b>p-f</b>	<b>p-f</b>	<b>p-f</b>	<b>p-f</b>	<b>p-f</b>
Paktya	Ahmadabad	-	-	-	-	-	-	-	-	-	-	-
Paktya	Ali Khail	-	-	-	-	-	-	-	-	-	-	-
Paktya	Samkani	-	-	-	-	-	-	-	-	-	-	-
Paktya	Dand Patan	-	-	-	-	-	-	-	-	-	-	-
Paktya	Gardez (Provincial Center)	-	-	-	-	-	-	-	-	-	-	-
Paktya	Woza Jadran	-	-	-	-	-	-	-	-	-	-	-
Paktya	Jaji	-	-	-	-	-	-	-	-	-	-	-
Paktya	Jani Khel	-	-	-	-	-	-	-	-	-	-	-
Paktya	Laja Ahmad Khel	-	-	-	-	-	-	-	-	-	-	-
Paktya	Lija Mangal	-	-	-	-	-	-	-	-	-	-	-
Paktya	Sayyid Karam	-	-	-	-	-	-	-	-	-	-	-
Paktya	Shamul *	-	-	-	-	-	-	-	-	-	-	-
Paktya	Shwak	-	-	-	-	-	-	-	-	-	-	-
Paktya	Zumat	-	-	-	-	-	-	-	-	-	-	-
<b>Paktya Total</b>		<b>p-f</b>	<b>p-f</b>	<b>p-f</b>	<b>p-f</b>	<b>p-f</b>	<b>p-f</b>	<b>p-f</b>	<b>p-f</b>	<b>p-f</b>	<b>p-f</b>	<b>p-f</b>

Province	District	2010	2011	2012	2013	2014	2015	2016	2017	2018	2019	2020
Panjshir	Bazarak (Provincial Center)	-	-	-	-	-	-	-	-	-	-	-
Panjshir	Darah	-	-	-	-	-	-	-	-	-	-	-
Panjshir	Hisa-i-Awal(Khinj)	-	-	-	-	-	-	-	-	-	-	-
Panjshir	Hisa-i-Duwumi	-	-	-	-	-	-	-	-	-	-	-
Panjshir	Panjshir	-	-	-	-	-	-	-	-	-	-	-
Panjshir	Paryan	-	-	-	-	-	-	-	-	-	-	-
Panjshir	Rukhah	-	-	-	-	-	-	-	-	-	-	-
Panjshir	Shutul	-	-	-	-	-	-	-	-	-	-	-
Panjshir	Unaba	-	-	-	-	-	-	-	-	-	-	-
<b>Panjshir Total</b>		<b>p-f</b>	<b>p-f</b>	<b>p-f</b>	<b>p-f</b>	<b>p-f</b>	<b>p-f</b>	<b>p-f</b>	<b>p-f</b>	<b>p-f</b>	<b>p-f</b>	<b>p-f</b>
Parwan	Bagram	-	-	-	-	-	-	-	-	-	-	-
Parwan	Charikar (Provincial Center)	-	-	-	-	-	-	-	-	-	-	-
Parwan	Syahgird (Ghorband)	-	-	-	-	-	-	-	-	-	-	-
Parwan	Jabalussaraj	-	-	-	-	-	-	-	-	-	-	-
Parwan	Koh-i-Safi	-	-	-	-	-	-	-	-	-	-	-
Parwan	Salang	-	-	-	-	-	-	-	-	-	-	-
Parwan	Sayyid Khel	-	-	-	-	-	-	-	-	-	-	-
Parwan	Shaykh Ali	-	-	-	-	-	-	-	-	-	-	-
Parwan	Shinwari	-	-	-	-	-	-	-	-	-	-	-
Parwan	Surkh-i-Parsa	-	-	-	-	-	-	-	-	-	-	-
<b>Parwan Total</b>		<b>p-f</b>	<b>p-f</b>	<b>p-f</b>	<b>p-f</b>	<b>p-f</b>	<b>p-f</b>	<b>p-f</b>	<b>p-f</b>	<b>p-f</b>	<b>p-f</b>	<b>p-f</b>
Samangan	Aybak (Provincial Center)	-	-	-	-	-	-	-	-	-	-	-
Samangan	Darah-i-Soof-i-Bala	-	-	-	-	-	-	-	58	198	-	-
Samangan	Darah-i-Suf-i-Payin	-	-	-	-	-	-	-	185	40	-	-
Samangan	Fayroz Nakhcheer	-	-	-	-	-	-	-	-	-	-	-
Samangan	Hazrat-i-Sultan	-	-	-	-	-	-	-	-	-	-	-
Samangan	Khuram wa Sar Bagh	-	-	-	-	-	-	-	-	-	-	-
Samangan	Roi-Do-Ab	-	-	-	-	-	-	-	-	-	-	-
<b>Samangan Total</b>		<b>p-f</b>	<b>p-f</b>	<b>p-f</b>	<b>p-f</b>	<b>p-f</b>	<b>p-f</b>	<b>p-f</b>	<b>243</b>	<b>238</b>	<b>p-f</b>	<b>p-f</b>
Sari Pul	Balkhab	-	-	-	-	-	-	-	-	-	-	-
Sari Pul	Gosfandi	-	-	-	-	-	-	-	-	4	-	-
Sari Pul	Kohistanat	-	-	-	-	-	-	-	-	96	7	10
Sari Pul	Sangcharak	-	-	-	-	-	-	-	-	181	223	-
Sari Pul	Sari Pul (Provincial Center)	-	-	-	-	-	-	72	212	80	280	572
Sari Pul	Sayyad	-	-	-	-	195	331	1,614	3,338	239	1,623	2,004
Sari Pul	Sozma Qala	-	-	-	-	-	-	-	-	61	-	21
<b>Sari Pul Total</b>		<b>p-f</b>	<b>p-f</b>	<b>p-f</b>	<b>p-f</b>	<b>195</b>	<b>331</b>	<b>1,686</b>	<b>3,550</b>	<b>660</b>	<b>2,134</b>	<b>2,607</b>
Takhar	Baharak	-	-	-	-	-	-	-	-	-	-	-
Takhar	Bangi	-	-	-	-	-	-	-	-	-	-	-
Takhar	Chahab	-	-	-	-	-	-	-	-	-	-	-
Takhar	Chal	-	-	-	-	-	-	-	-	-	-	-
Takhar	Darqad	-	-	-	-	-	-	-	-	-	-	-
Takhar	DashtiQala	-	-	-	-	-	-	-	-	-	-	-
Takhar	Farkhar	-	-	-	22	-	-	-	7	18	-	-
Takhar	Hazar Sumuch	-	-	-	-	-	-	-	-	-	-	-
Takhar	Eshkamish	-	-	-	-	-	-	-	-	-	-	-
Takhar	Kalafgan	-	-	-	21	-	-	-	17	40	-	-
Takhar	Khwaja Bahawuddin	-	-	-	-	-	-	-	-	-	-	-
Takhar	Khwaja Ghar	-	-	-	-	-	-	-	-	-	-	-
Takhar	Namak Ab	-	-	-	-	-	-	-	-	-	-	-
Takhar	Rustaq	-	-	-	25	-	-	-	23	193	-	-
Takhar	Taloqan (Provincial Center)	-	-	-	2	-	-	-	-	1	-	-
Takhar	Warsaj	-	-	-	-	-	-	-	-	-	-	-
Takhar	Yangi Qala	-	-	-	-	-	-	-	-	-	-	-
<b>Takhar Total</b>		<b>p-f</b>	<b>p-f</b>	<b>p-f</b>	<b>p-f</b>	<b>p-f</b>	<b>p-f</b>	<b>p-f</b>	<b>p-f</b>	<b>251</b>	<b>p-f</b>	<b>p-f</b>

Province	District	2010	2011	2012	2013	2014	2015	2016	2017	2018	2019	2020
Uruzgan	Chorah	221	301	349	611	502	275	454	1,263	1,128	312	255
Uruzgan	Dihrawud	145	3,438	4,375	3,321	2,214	3,382	4,743	5,648	5,479	3,258	3,063
Uruzgan	Khas Uruzgan	230	384	38	123	1,074	172	2,492	2,680	1,059	762	1,380
Uruzgan	Nesh *	-	-	-	-	-	-	-	-	-	-	-
Uruzgan	Shahidi Hasas	3,635	3,601	3,617	3,888	2,296	3,489	1,951	3,062	2,707	2,064	2,575
Uruzgan	Tirin Kot (Provincial Center)	3,106	2,895	2,129	1,936	3,042	3,852	5,574	8,368	7,873	5,050	6,065
Uruzgan	Gizab *	-	-	-	-	148	107	290	520	417	132	105
<b>Uruzgan Total</b>		<b>7,337</b>	<b>10,620</b>	<b>10,508</b>	<b>9,880</b>	<b>9,277</b>	<b>11,277</b>	<b>15,503</b>	<b>21,541</b>	<b>18,662</b>	<b>11,578</b>	<b>13,444</b>
Wardak	Chak-i-Wardak	-	-	-	-	-	-	-	-	-	-	-
Wardak	Dainirdad	-	-	-	-	-	-	-	-	-	-	-
Wardak	Hisah-i-Awal Behsud	-	-	-	-	-	-	-	-	-	-	-
Wardak	Jaghata	-	-	-	-	-	-	-	-	-	-	-
Wardak	Jalrez	-	-	-	-	-	-	-	-	-	-	-
Wardak	Markaz-i- Behsud	-	-	-	-	-	-	-	-	-	-	-
Wardak	Maidan Shahr (Provincial Center)	-	-	-	-	-	-	-	-	-	-	-
Wardak	Nerkh	-	-	-	-	-	-	-	-	-	-	-
Wardak	Sayyidabad	-	-	-	-	-	-	-	-	-	-	-
<b>Wardak Total</b>		<b>p-f</b>	<b>p-f</b>	<b>p-f</b>	<b>p-f</b>	<b>p-f</b>	<b>p-f</b>	<b>p-f</b>	<b>p-f</b>	<b>p-f</b>	<b>p-f</b>	<b>p-f</b>
Zabul	Arghandab	91	47	79	32	256	24	56	56	-	-	-
Zabul	Atghar	16	1	5	12	12	-	3	52	9	-	1
Zabul	Daychopan	122	26	25	259	178	25	35	93	294	-	16
Zabul	Kakar Kak-e Afghan	44	40	38	50	403	122	4	-	24	-	2
Zabul	Mizan	140	74	155	858	544	171	150	759	806	146	155
Zabul	Naw Bahar	4	2	12	-	-	-	-	-	-	-	-
Zabul	Qalat (Provincial Center)	20	56	10	28	146	37	-	10	18	-	-
Zabul	Shah Joi	20	11	69	96	146	-	-	-	-	-	78
Zabul	Shemel Zayi	15	1	5	-	41	-	-	202	32	-	0
Zabul	Shinkai	-	-	-	-	-	-	-	-	39	37	156
Zabul	Tarnak wa Jaldak	10	5	26	-	1,168	265	1,115	959	1359	-	-
<b>Zabul Total</b>		<b>482</b>	<b>262</b>	<b>424</b>	<b>1,335</b>	<b>2,894</b>	<b>644</b>	<b>1,363</b>	<b>2,131</b>	<b>2,581</b>	<b>183</b>	<b>408</b>
<b>TOTAL</b>		<b>122,515</b>	<b>131,065</b>	<b>154,436</b>	<b>209,450</b>	<b>224,337</b>	<b>182,566</b>	<b>182,566</b>	<b>182,566</b>	<b>262,588</b>	<b>163,471</b>	<b>223,695</b>
<b>Rounded Total</b>		<b>123,000</b>	<b>131,000</b>	<b>154,000</b>	<b>209,000</b>	<b>224,000</b>	<b>183,000</b>	<b>183,000</b>	<b>183,000</b>	<b>263,000</b>	<b>163,000</b>	<b>224,000</b>

*p-f: Poppy-free according to the definition of the respective year. This concept was introduced in 2007. In 2007, provinces with no poppy were considered poppy-free; since 2008, provinces with less than 100 hectares of poppy have been considered poppy-free.*

*The survey is designed to produce province level estimates. District estimates are derived by a combination of different approaches. They are indicative and suggest a possible distribution of the estimated provincial poppy area among the districts of a province.*