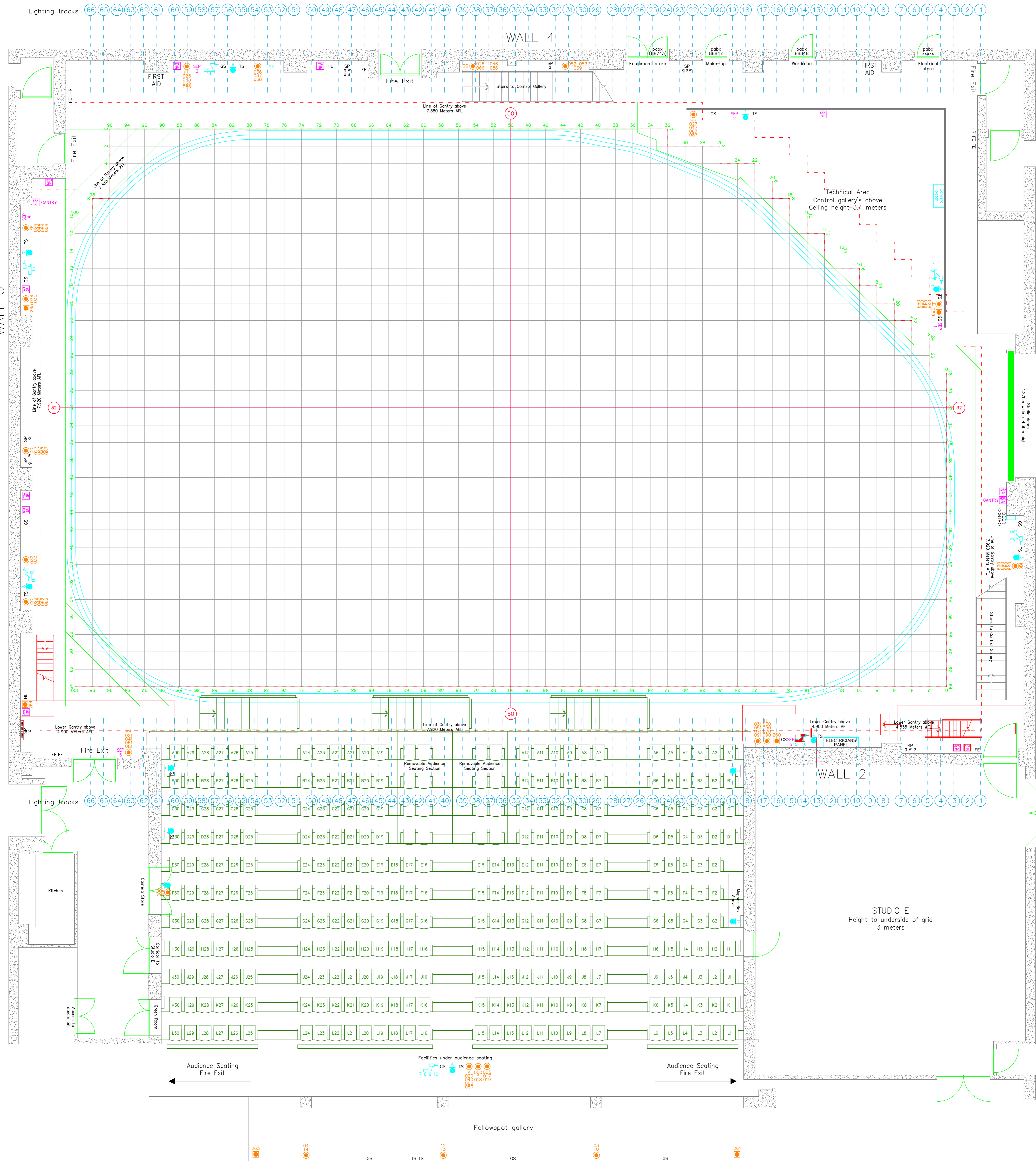


Studio Plan Metric Scale 1:50@A0
Elstree Studio D

BBC Elstree, Clarendon Road, Borehamwood,
 Herts, WD6 1JF Tel: +44 (0) 203 327 6900

STUDIO SERVICING ROAD



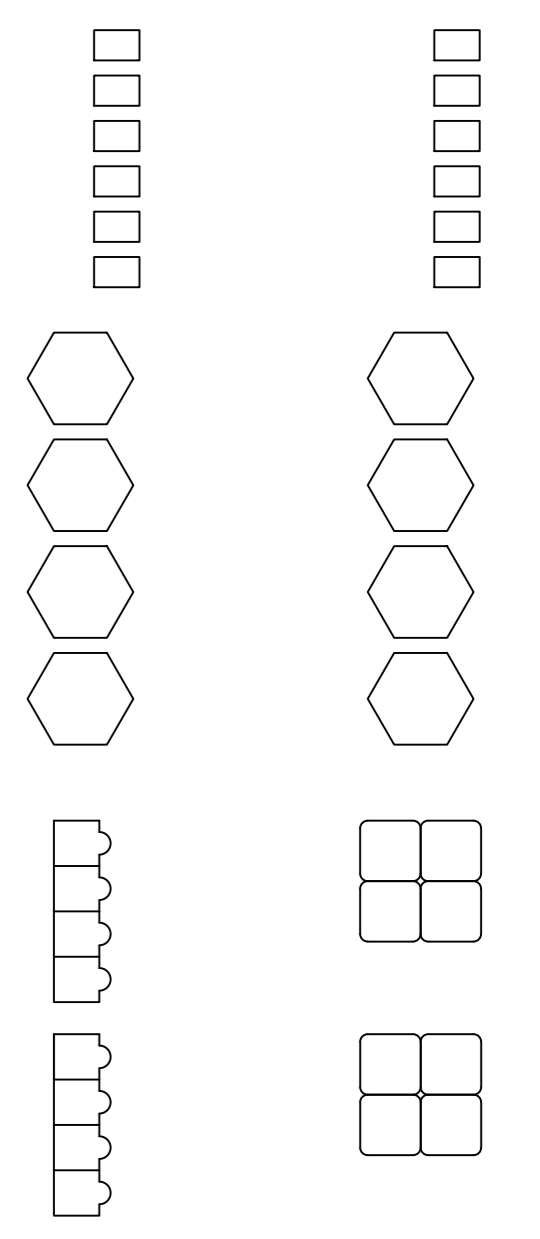
KEY TO SYMBOLS:

- HL HOUSE LIGHTS
- FE FIRE EXTINGUISHER
- HR FIRE HOSE REEL
- SP SERVICE POINT:
g = Gas; w = Water; s = Sink; a = Compressed Air
- TS TECHNICAL POWER SOCKET
- GS GENERAL SERVICE POWER SOCKET
- STUDIO FLOOR SETTING GRID MARKINGS (600mm Sq)
- STUDIO FLOOR SETTING GRID CENTRE LINE (Walls 1-3 Line #32 Walls 2-4 Line #50)
- STUDIO FLOOR SETTING GRID OUTLINE
- STUDIO CYCLORAMA TRACKS
- 32 AMP SINGLE PHASE 230V SUPPLY
- 32 AMP THREE PHASE 400V SUPPLY
- 63 AMP SINGLE PHASE 230V SUPPLY
- 63 AMP THREE PHASE 400V SUPPLY
- 125 AMP THREE PHASE 400V SUPPLY
- SCENERY EARTH POINT
- 5kW LIGHTING SOCKET OUTLET
- 10kW LIGHTING SOCKET OUTLET
- LIGHTING GRID TRANSFER GRIDDERS
- LIGHTING GRID TRACK & TRACK NUMBER
- LIGHTING GRID TRACK LINES
- SOUND & VISION WALLBOX
- CAMERA CABLE CONNECTION
- NETWORK POINT

NOTES:

- Height of Cyclorama Rolls 7.520m
- Height of Gantry Floor 7.380m (Wall 4) & 7.920m
- Height to Lighting Grid 10.020m
- Studio Floor Grid Markings 600mm Sq
- Audience Seating Capacity 303 or 319
- Over Places & Gantry
- Lower Gantry (Wall 2 only)
- Studio Fire Lane 1200mm

DRAWING DISTRIBUTION:



DESIGN NOTES:

PRODUCTION

COSTING NO.

DESIGNER

DIRECTOR

DRAWN BY

ZERO DATE

PRODUCTION DATE



BBC Studioworks strives, with its best endeavour, to ensure that the information contained within these plans is accurate. However, it must be understood that if there are any specific requirements, critical measurements, or any doubt, as to the exact conditions on site. It is strongly recommended that a site survey is conducted, prior to any works being undertaken.

Taking this simple precaution can and does save a lot of embarrassment.

Please contact BBC Studioworks on +44 (0)203 327 6900 or your projects Studio Resource Manager for further assistance.

© BBC Studioworks Ltd 2018
 Issued May 2016. All previous versions superceded.
 Errors & Omissions Excepted (E&OE)
 Updates: 02/07/2013 RMT #10 22/12/2014 MLF #11 06/05/2016 John Loughman
 V300 28/11/2018 PSB Vision

