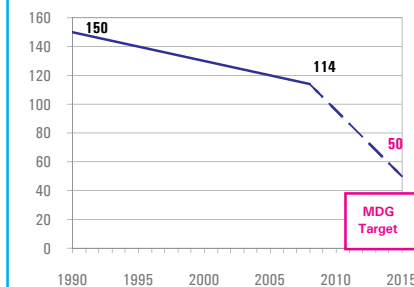


DEMOGRAPHICS

Total population (000)	20,591	(2008)
Total under-five population (000)	3,139	(2008)
Total number of births (000)	722	(2008)
Under-five mortality rate (per 1,000 live births)	114	(2008)
Total number of under-five deaths (000)	79	(2008)
Infant mortality rate (per 1,000 live births)	81	(2008)
Neonatal mortality rate (per 1,000 live births)	64	(2004)
HIV prevalence rate (15-49 years, %)	3.9	(2007)
Population below international poverty line of US\$1.25 per day (%)	23	(2002)

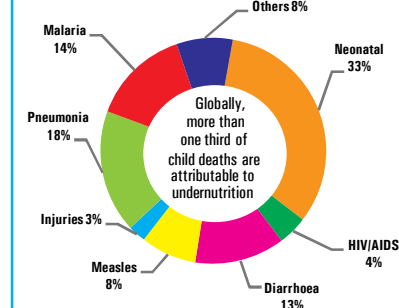
Under-five mortality rate

Deaths per 1,000 live births



Source: IGME 2009

Causes of under-five deaths, 2004



Source: WHO 2008

NUTRITIONAL STATUS

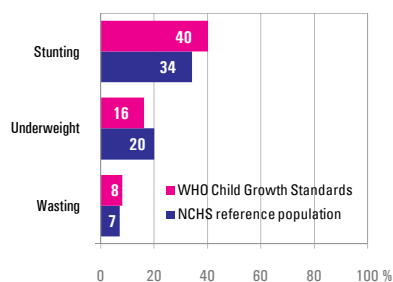
Burden of undernutrition (2008)

WHO Child Growth Standards

Stunted (under-fives, 000):	1,246	Underweight (under-fives, 000):	499
Share of developing world stunting burden (%):	0.6	Wasted (under-fives, 000):	261
Stunting country rank:	26	Severely wasted (under-fives, 000):	85

Current nutritional status

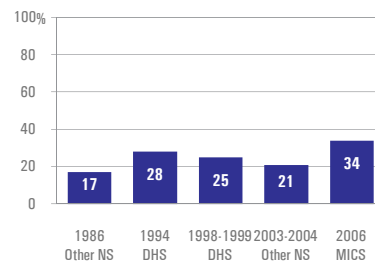
Percentage of children < 5 years old suffering from:



Source: MICS 2006

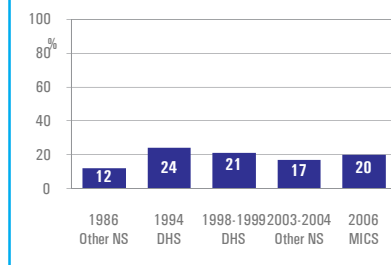
Stunting trends

Percentage of children < 5 years old stunted NCHS reference population



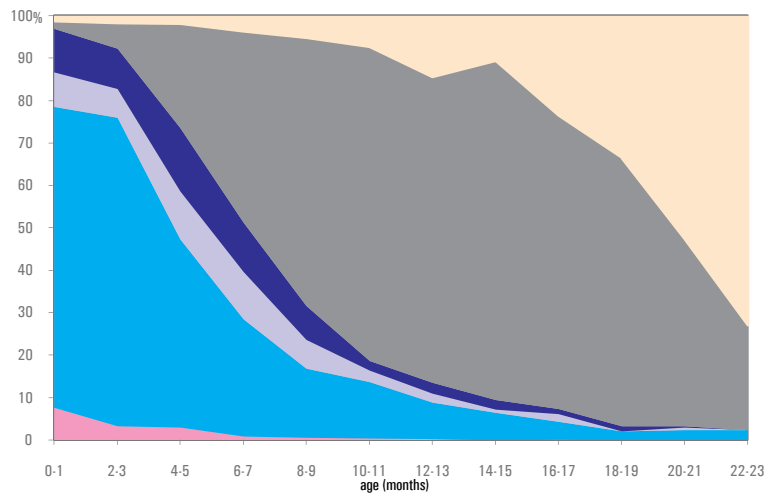
Underweight trends

Percentage of children < 5 years old underweight, NCHS reference population



INFANT AND YOUNG CHILD FEEDING

Infant feeding practices, by age



Source: MICS 2006

Exclusive breastfeeding

Percentage of infants < 6 months old exclusively breastfed

