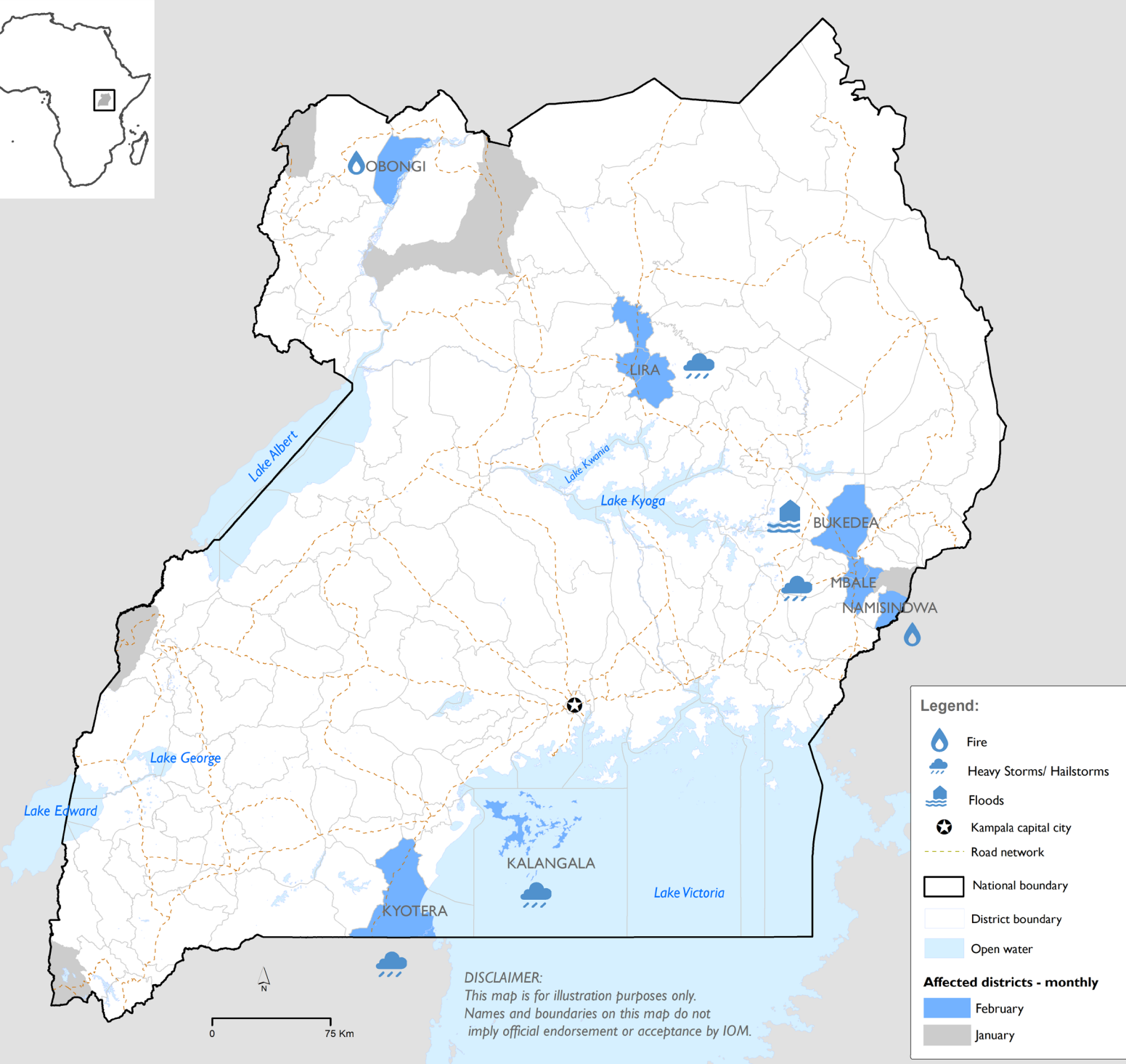


DISTRICTS (ADMIN 1) AFFECTED 2024

FEBRUARY SUMMARIES 2024



Affected Population

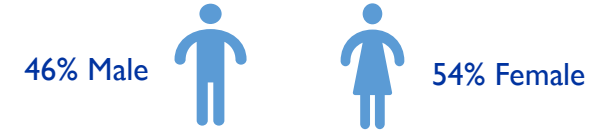
3,935 Individuals
993 Households



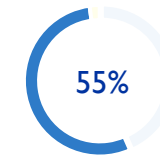
Internally Displaced Population

1,525 Individuals
271 Households

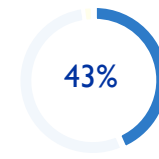
People affected by Gender and Age Disaggregation



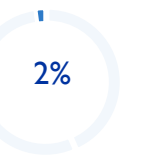
Adults (18 – 64)



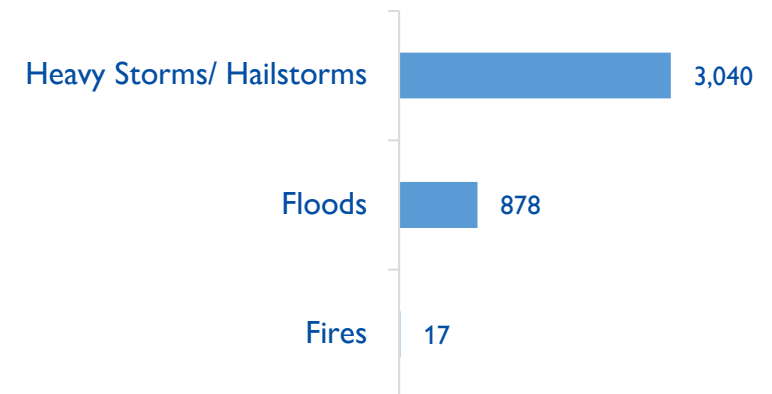
Children <18



Eldery (>64)



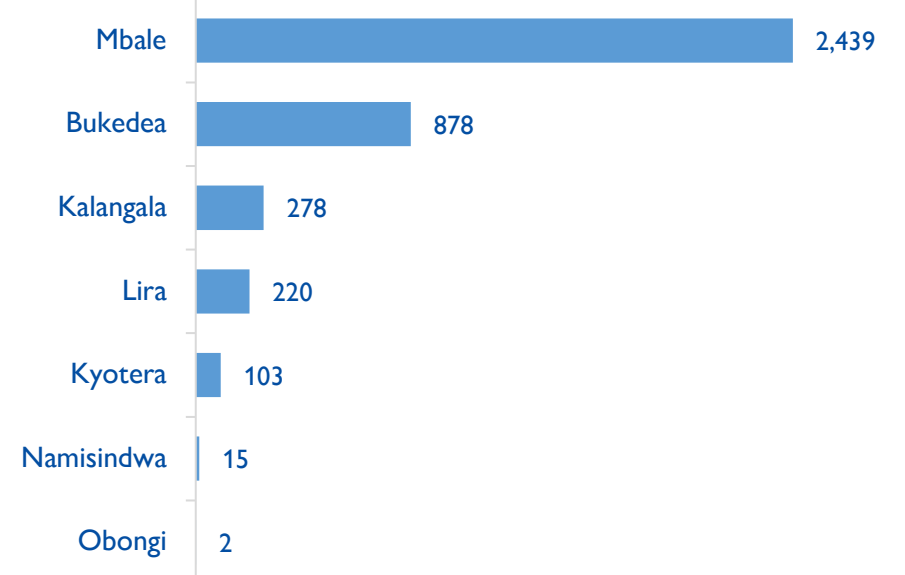
NUMBER OF AFFECTED PEOPLE BY DISASTERS IN FEBRUARY 2024



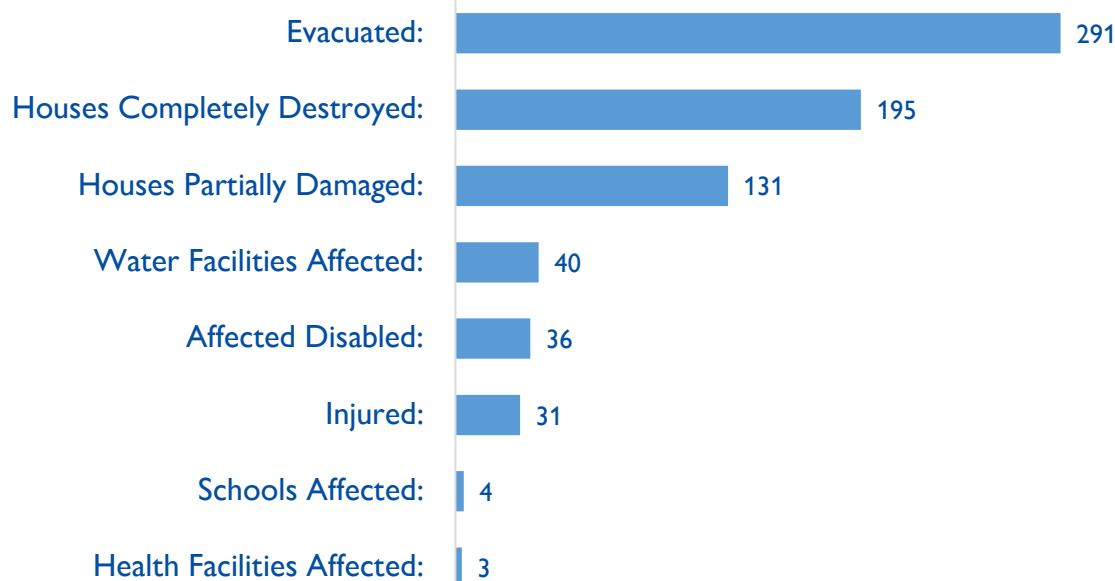
OVERVIEW OF AFFECTED POPULATION – FEBRUARY 2024

- In February 2024 floods were reported in Bukedea district, heavy storms in Lira, Kyotera, Kalangala and Mbalé and fires in Mamisidwa and Obongi.
- The impacts of the hazards affected 3,935 individuals (993 households), with 1,525 people from 271 households were internally displaced.
- Adults between 18 and 64 years were the most affected age group (55%), followed by children below 18 (43%) and elderly above 64 (2%). Notably, more than half of affected people were female (54%).
- Urgent needs identified include sanitation, nonfood items, food assistance and livelihood promotion.
- Infrastructure damage assessed indicates that 195 houses were completely destroyed, 131 houses were partially damaged, 40 water facilities were affected and also 4 schools and 3 health facilities were adversely affected
- In January 2024, 1,654 individuals were affected bringing the 2024 accumulation to 5,589 individuals.

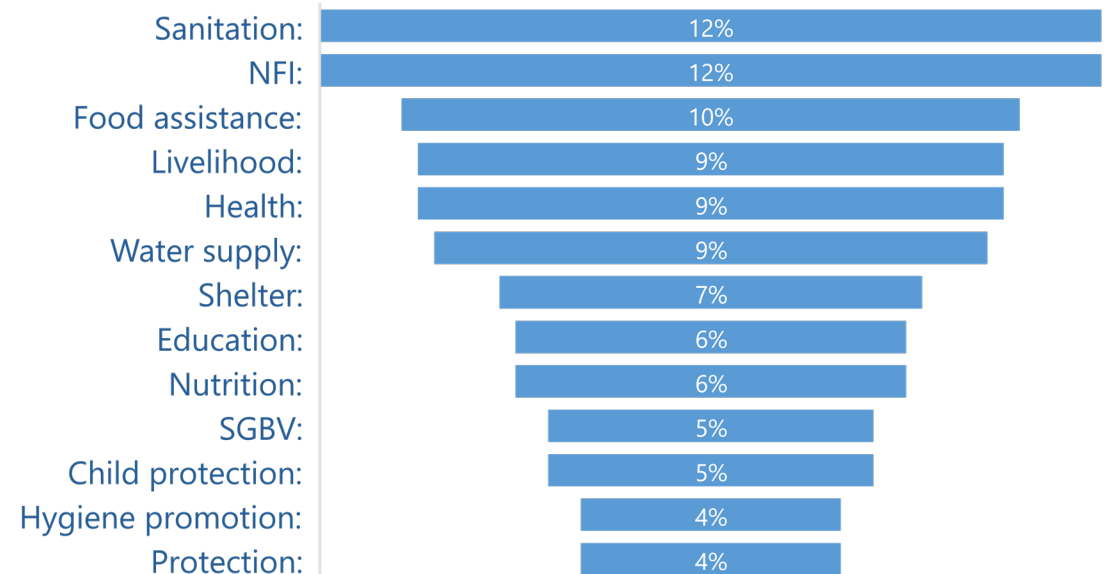
AFFECTED PEOPLE BY DISTRICT IN FEBRUARY 2024



DISASTER IMPACTS – FEBRUARY 2024



Priority needs assessment



Partners

