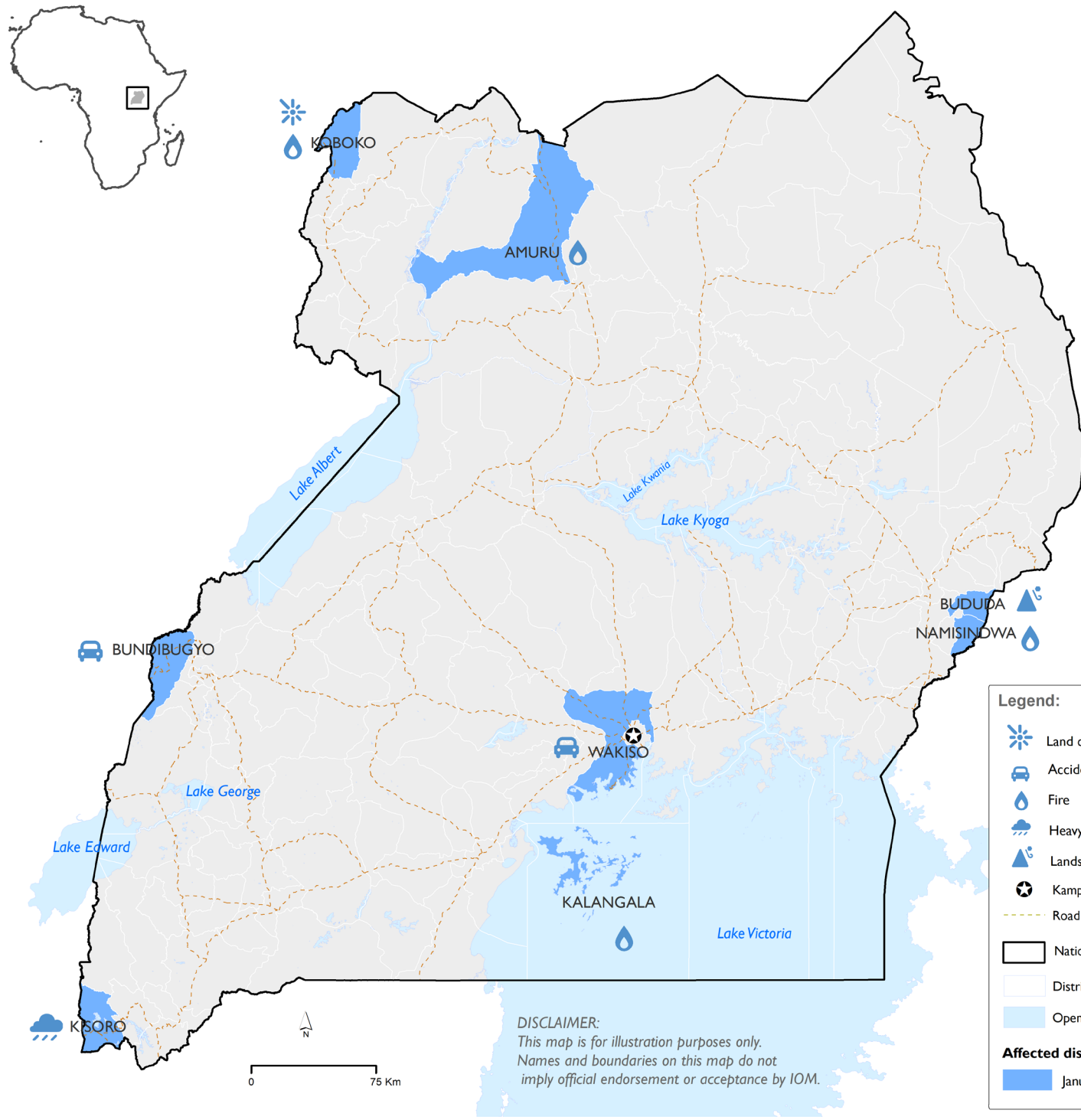




DISTRICTS (ADMIN 1) AFFECTED 2024



JANUARY SUMMARIES 2024



Affected Population
1,654 Individuals
288 Households

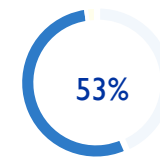


Internally Displaced Population
685 Individuals
125 Households

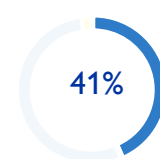
People affected by Gender and Age Disaggregation

39% Male 61% Female

Adults (18 – 64)



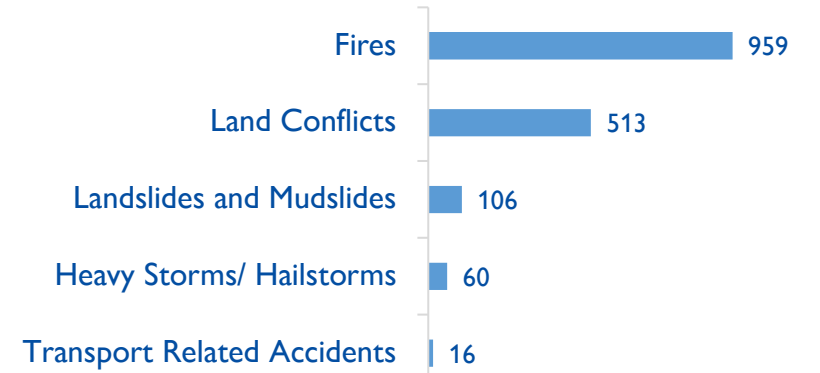
Children <18



Eldery (>64)



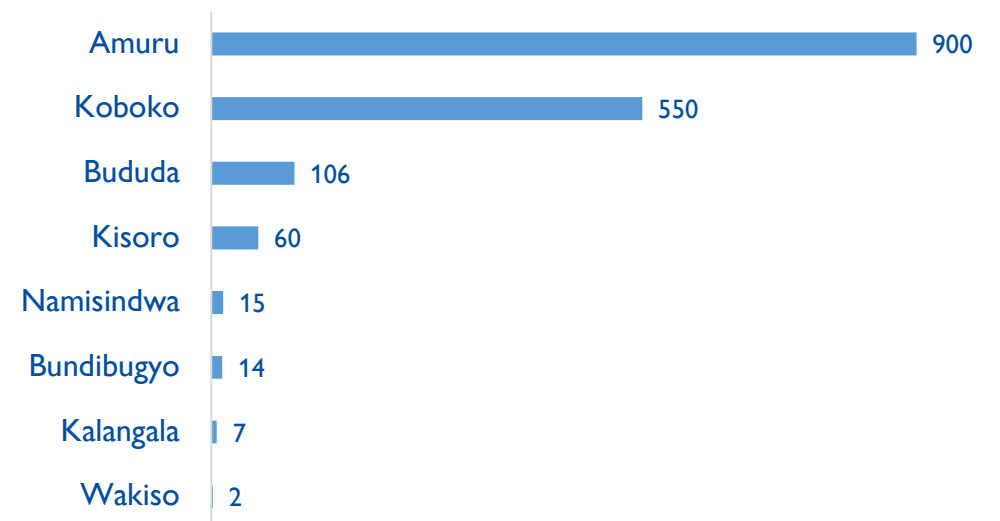
NUMBER OF AFFECTED PEOPLE BY DISASTERS IN JANUARY 2024



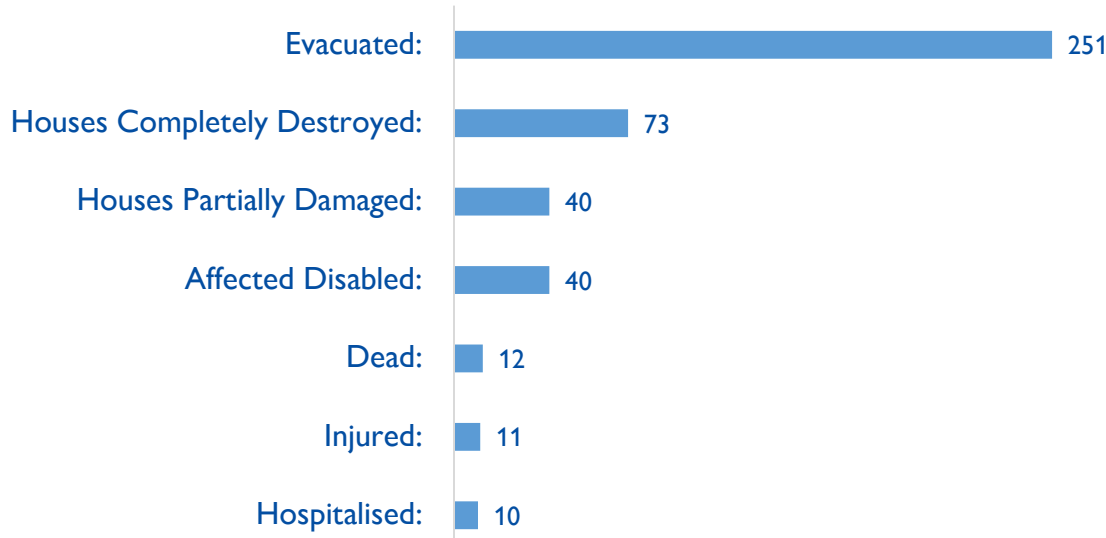
OVERVIEW OF AFFECTED POPULATION – JANUARY 2024

- Human made disasters (fires) were reported in Amuru (900 affected), Koboko (37), Namisindwa (15) and Kalangala (7), while land disputes were reported in Koboko (513). Other events, such as landslides and mudslides were reported in Bududa, affecting 106 people, while heavy storms and hailstorms in Kisoro affected 60 people. Finally, 14 people were involved in transport-related accidents in Bundibugyo
- The impacts of the hazards affected 1,654 individuals (288 households), with 685 people from 125 households were internally displaced.
- Adults between 18 and 64 years were the most affected age group (53%), followed by children below 18 (41%) and elderly above 64 (6%). Notably, more than half of affected people were female (61%).
- Urgent needs identified include Livelihood, NFI, Child protection, food assistance, sanitation among others.
- Infrastructure damage assessed indicates that 73 houses were completely destroyed and 40 houses were partially damaged by disasters.

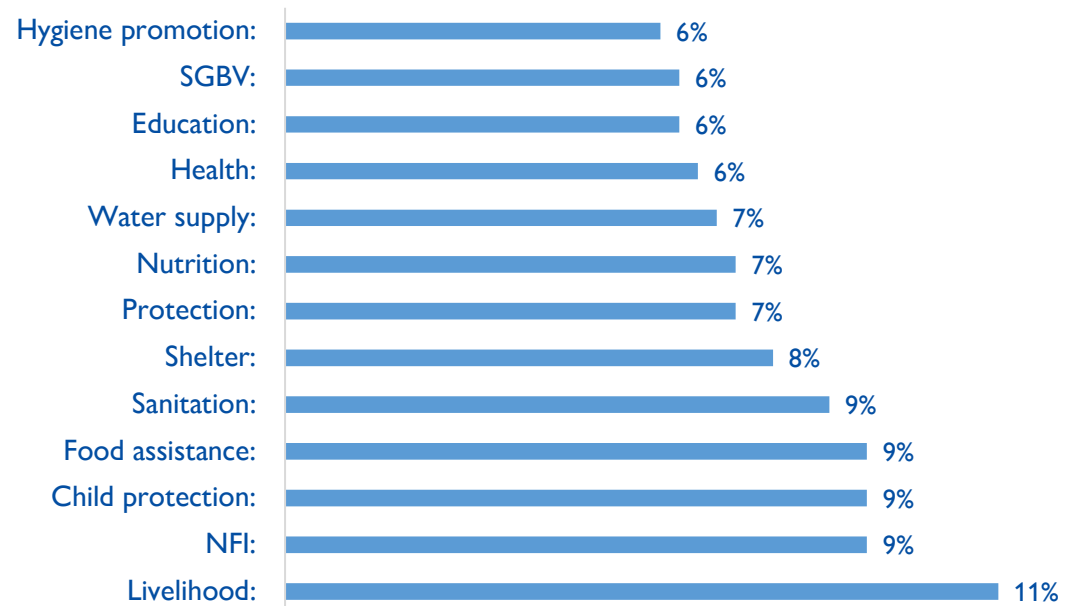
AFFECTED PEOPLE BY DISTRICT IN JANUARY 2024



DISASTER IMPACTS – JANUARY 2024



Priority needs assessment



Partners

