

DTM IDP Site as 20 Apr. 2015

Site Size HHS

- 1 to 9
- 10 to 49
- 50 to 99
- 100 to 199
- 200 to 499
- 500 to 999
- 1000 +

ADM1 Region Level

ADM2 District Level

- City
- Town
- Village
- Hamlet

Forest

Water

Roads

- Primary
- Secondary
- Tertiary
- Waterways
- Railways

2nd ROUND | MALAWI

DTM AS 20th APRIL 2015

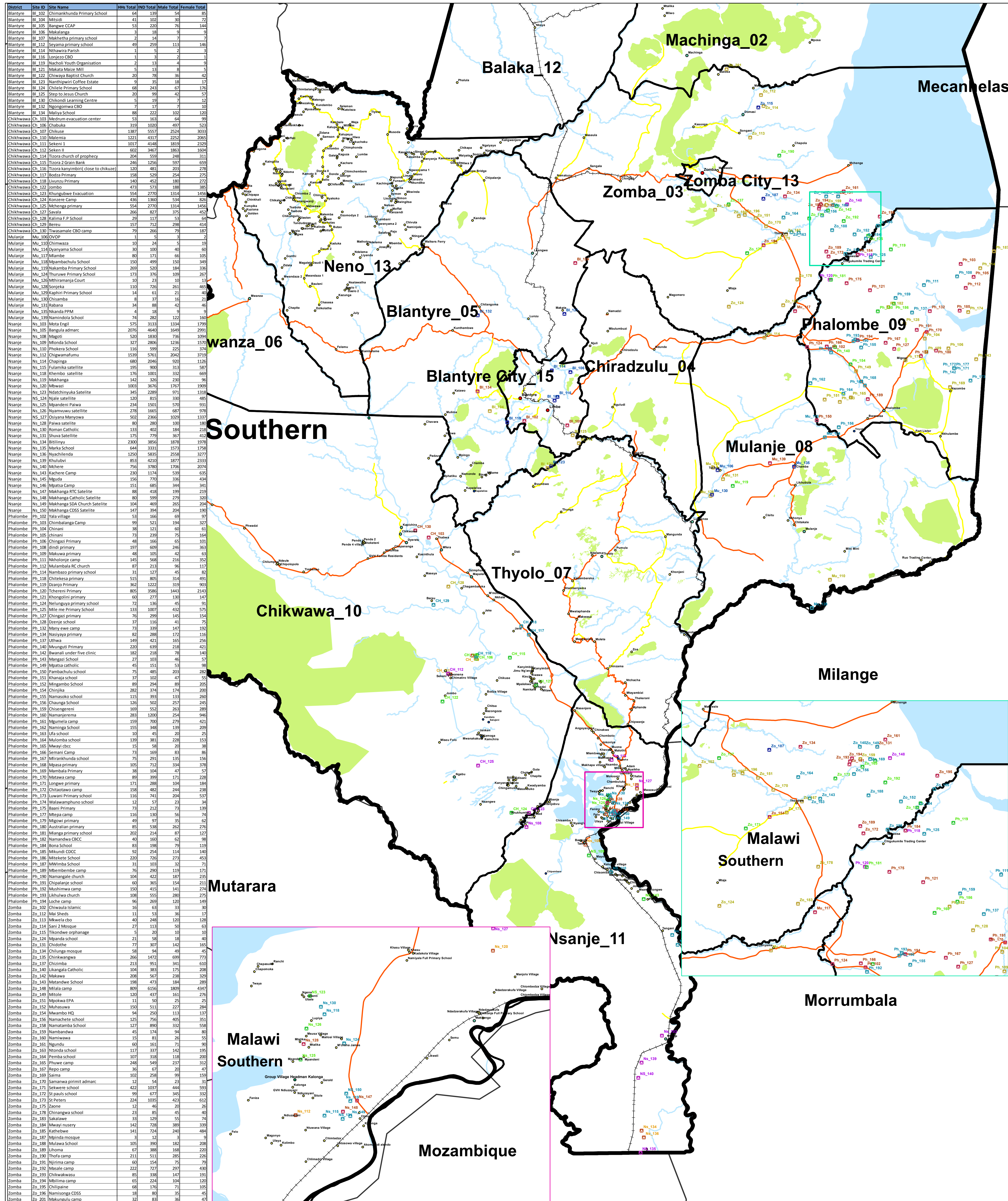
1:350,000 1 cm = 4 km

Kilometers

Sources : National Office Statistics Malawi, OSM, IOM, IOM DTM

This map is for illustration purposes only. Names and boundaries on this map do not imply official endorsement or acceptance by IOM.

[www.iom.int / prd@iom.int](http://www.iom.int/prd@iom.int)



District	Site ID	Site Name	HHS Total	IND Total	Male Total	Female Total
Blantyre	Bl_102	Chimankhunda Primary School	64	139	54	85
Blantyre	Bl_104	Mtsutsi	41	102	39	72
Blantyre	Bl_105	Bangwe CCAP	53	220	76	144
Blantyre	Bl_106	Makalanga	3	18	9	9
Blantyre	Bl_107	Makhettha primary school	2	14	7	7
Blantyre	Bl_112	Chikwawa primary school	49	259	113	146
Blantyre	Bl_114	Nthawira Parish	1	5	2	3
Blantyre	Bl_116	Lonjezo CBO	1	3	2	1
Blantyre	Bl_119	Nacholi Youth Organisation	2	13	4	9
Blantyre	Bl_121	Makata Maza Mill	4	13	8	5
Blantyre	Bl_122	Chikwawa Baptist Church	20	78	38	40
Blantyre	Bl_123	Nanthipwiri Coffee Estate	9	35	18	17
Blantyre	Bl_124	Chilele Primary School	68	243	67	176
Blantyre	Bl_125	Step to Jesus Church	20	59	42	17
Blantyre	Bl_130	Chikwawa Learning Centre	5	19	7	12
Blantyre	Bl_132	Nsongomwa CBO	7	17	7	10
Blantyre	Bl_134	Maliya School	88	222	102	120
Chikwawa	Ch_103	Medrum evacuation center	53	163	64	99
Chikwawa	Ch_104	Medrum	319	1000	497	503
Chikwawa	Ch_107	Chikuse	1387	5557	2524	3033
Chikwawa	Ch_110	Malemia	1221	4317	2252	2065
Chikwawa	Ch_111	Sekeni 1	1017	4148	1819	2329
Chikwawa	Ch_112	Sekeni II	602	3467	1863	1604
Chikwawa	Ch_114	Tizora church of prophesy	284	159	249	311
Chikwawa	Ch_115	Tizora 2 Grain Bank	246	1256	597	659
Chikwawa	Ch_116	Tizora kanyimbiri (close to chikuse)	120	481	203	278
Chikwawa	Ch_117	Botza Primary	158	529	254	275
Chikwawa	Ch_118	Botza Primary	1408	452	186	270
Chikwawa	Ch_122	Botza	473	573	188	385
Chikwawa	Ch_123	Chungubwe Evacuation	554	2770	1314	1456
Chikwawa	Ch_124	Konzere Camp	436	1360	534	826
Chikwawa	Ch_125	Mchanga primary	355	2770	1314	1456
Chikwawa	Ch_127	Uvaya	266	827	379	448
Chikwawa	Ch_128	Kalima F.P School	29	117	53	64
Chikwawa	Ch_129	Bereu	157	712	298	414
Chikwawa	Ch_130	Tiwamsale CBO camp	79	266	79	187
Mulanje	Mu_106	DVO	1	5	3	2
Mulanje	Mu_110	Chimwaza	10	24	5	19
Mulanje	Mu_114	Dyanama School	30	100	40	60
Mulanje	Mu_117	Mlambé	80	171	66	105
Mulanje	Mu_118	Mpambachulu School	150	499	150	349
Mulanje	Mu_119	Nkamba Primary School	269	891	194	386
Mulanje	Mu_124	Thuruse Primary School	173	376	109	267
Mulanje	Mu_126	Mhramanja Court	10	23	10	13
Mulanje	Mu_128	Sonjeka	110	726	261	465
Mulanje	Mu_129	Capita Primary School	14	61	21	40
Mulanje	Mu_130	Chisamba	8	37	16	21
Mulanje	Mu_131	Rabana	34	88	42	46
Mulanje	Mu_135	Nkandla PPM	4	18	9	9
Mulanje	Mu_139	Namindisa School	74	282	127	155
Nsanje	Ns_103	Mota Engil	575	3133	1334	1799
Nsanje	Ns_105	Bangula admarc	2076	4640	1649	2991
Nsanje	Ns_108	Magoti	520	1830	736	1094
Nsanje	Ns_109	Mlanda School	327	2806	1236	1570
Nsanje	Ns_110	Phokani School	116	599	239	360
Nsanje	Ns_112	Chigwafumu	1539	5761	2042	3719
Nsanje	Ns_114	Chapanga	680	2046	920	1126
Nsanje	Ns_115	Fulanika satellite	195	900	311	589
Nsanje	Ns_118	Chimbo satellite	176	1161	331	830
Nsanje	Ns_119	Makhanga	142	326	232	96
Nsanje	Ns_120	Mwazi	1003	3676	1767	1909
Nsanje	Ns_123	Ndatchinyuka Satellite	345	2289	971	1318
Nsanje	Ns_124	Njale satellite	120	815	330	485
Nsanje	Ns_125	Mpandani Palwa	1501	234	570	631
Nsanje	Ns_126	Nyamvovu satellite	278	1665	687	978
Nsanje	Ns_127	Osiyana Manyowa	500	2366	1029	1337
Nsanje	Ns_128	Palwa satellite	80	280	100	180
Nsanje	Ns_130	Chimbo satellite	133	403	184	219
Nsanje	Ns_131	Shuva Satellite	175	779	367	412
Nsanje	Ns_134	Bitinyu	2300	3856	1878	1978
Nsanje	Ns_135	Marka School	644	3331	1573	1758
Nsanje	Ns_136	Ivychilinda	1250	5055	2559	3277
Nsanje	Ns_139	Chulubi	851	4218	1877	2341
Nsanje	Ns_140	Mchere	356	3780	1706	2074
Nsanje	Ns_143	Kachere Camp	230	1174	539	635
Nsanje	Ns_145	Mgula	156	770	336	434
Nsanje	Ns_146	Mpatsa Camp	151	685	344	341
Nsanje	Ns_147	Makhanga RTC Satellite	88	418	199	219
Nsanje	Ns_148	Makhanga Catholic Satellite	80	599	279	320
Nsanje	Ns_149	Makhanga SDA Church Satellite	104	469	265	204
Nsanje	Ns_150	Makhanga CDS Satellite	147	394	204	190
Phalombe	Ph_102	Kala village	53	166	69	97
Phalombe	Ph_103	Chimbalanga Camp	99	521	194	327
Phalombe	Ph_104	Chinani	38	121	60	61
Phalombe	Ph_105	Chinani	78	239	75	164
Phalombe	Ph_106	Chingwa Primary	164	691	310	381
Phalombe	Ph_108	dindi primary	197	609	246	363
Phalombe	Ph_109	Makwira primary	48	105	42	63
Phalombe	Ph_111	Nkhosho camp	145	568	216	352
Phalombe	Ph_112	Nkhosho Catholic Church	71	213	96	117
Phalombe	Ph_114	Nambazo primary school	31	127	45	82
Phalombe	Ph_118	Chitekesa primary	515	805	314	491
Phalombe	Ph_119	Drango Primary	362	2222	319	903
Phalombe	Ph_120	Ichereni Primary	805	3586	1443	2143
Phalombe	Ph_121	Chisogoni primary	604	277	139	147
Phalombe	Ph_124	Nelungaya primary school	72	136	45	91
Phalombe	Ph_125	Mle me Primary School	133	1007	432	575
Phalombe	Ph_127	Chingwa primary	76	299	145	154
Phalombe	Ph_128	Dieshe school	37	116	41	75
Phalombe	Ph_132	Many ewe camp	73	339	147	192
Phalombe	Ph_134	Nasiyaya primary	82	288	172	116
Phalombe	Ph_137	Lithwa	149	421	165	256
Phalombe	Ph_140	Mvunguti Primary	220	639	218	421
Phalombe	Ph_142	Mwambi under five clinic	28	116	78	38
Phalombe	Ph_143	Mangazi School	27	103	46	57
Phalombe	Ph_149	Mpatsa catholic	45	151	53	98
Phalombe	Ph_150	Pambachulu school	75	485	203	282
Phalombe	Ph_151	Mwambi school	37	113	47	66
Phalombe	Ph_152	Mingambo School	89	294	89	205
Phalombe	Ph_154	Chinjika	282	374	174	200
Phalombe	Ph_155	Namasoko school	115	393	133	260
Phalombe	Ph_156	Changwa School	126	500	257	243
Phalombe	Ph_159	Chisagereni	169	502	263	239
Phalombe	Ph_160	Namanjerema	283	1200	254	946
Phalombe	Ph_161	Mgumela camp	159	700	279	421
Phalombe	Ph_162	Namanga School	155	348	139	209
Phalombe	Ph_163	Lifa school	10	45	20	25
Phalombe	Ph_164	Mulamba school	139	381	228	153
Phalombe	Ph_165	Mwazi cbcc	15	58	20	38
Phalombe	Ph_166	Semani Camp	73	169	83	86
Phalombe	Ph_167	Mwambundu school	75	293	133	160
Phalombe	Ph_168	Mpasa primary	105	712	334	378
Phalombe	Ph_169	Mambala Primary	38	104	47	57
Phalombe	Ph_170	Matawa camp	89	399	171	228
Phalombe	Ph_171	Longwe primary	171	288	104	184
Phalombe	Ph_172	Chisogoni camp	158	482	246	236
Phalombe	Ph_173	Luwani Primary school	116	741	204	537
Phalombe	Ph_174	Walawaphungo school	12	57	23	34
Phalombe	Ph_175	Bani Primary	73	212	73	139
Phalombe	Ph_177	Mwambi camp	116	136	56	70
Phalombe	Ph_179	Migowi primary	49	97	35	62
Phalombe	Ph_180	Australian primary	85	538	262	276
Phalombe	Ph_181	Manga primary school	202	214	87	127
Phalombe	Ph_182	Namandwa CBCC	48	160	62	98
Phalombe	Ph_184	Bona School	83	198	79	119
Phalombe	Ph_185	Mikundi CDC	92	254	114	140
Phalombe	Ph_186	Mteketete School	220	726	273	453
Phalombe	Ph_187	Mwimba School	31	103	37	71
Phalombe	Ph_189	Mwambi camp	76	293	117	171
Phalombe	Ph_190	Namangale church	104	422	187	235
Phalombe	Ph_191	Chipalange school	60	365	154	211
Phalombe	Ph_192	Mushimwa camp	150	415	141	274
Phalombe	Ph_193	Lukhwa church	108	555	286	270
Phalombe	Ph_194	Lucha camp	36	208	120	188
Zomba	Zo_102	Chiwala Islamic	16	63	33	30
Zomba	Zo_112	Mai Sheds	11	53	36	17
Zomba	Zo_113	Mwale cbo	40	248	120	128
Zomba	Zo_114	Sani 2 mosque	27	113	50	63
Zomba	Zo_115	Tikondwe orphanage	5	20	10	10
Zomba	Zo_124	Mpanda school	21	58	18	40
Zomba	Zo_131	Chidotho	77	307	142	165
Zomba	Zo_134	Chitwa mosque	58	94	49	45
Zomba	Zo_135	Chinkwangwa	266	1472	699	773
Zomba	Zo_137	Chizimba	213	951	341	610
Zomba	Zo_140	Lukangala Catholic	104	383	175	208
Zomba	Zo_142	Makwira	208	567	238	329
Zomba	Zo_143	Mkandwe School	198	473	184	289
Zomba	Zo_148	Mfala camp	809	6156	1809	4347
Zomba	Zo_149	Mtote	120	437	161	276
Zomba	Zo_151	Mpoka EPA	11	50	25	25
Zomba	Zo_152	Mhwaswa	150	511	221	290
Zomba	Zo_154	Mwambo HQ	94	250	113	137
Zomba	Zo_156	Namachete school	125	756	405	351
Zomba	Zo_158	Namatamba School	127	890	332	558
Zomba	Zo_159	Nambandwa	45	174	94	80
Zomba	Zo_160	Namawasa	81	15	81	55
Zomba	Zo_161	Ngundu	60	161	71	90
Zomba	Zo_163	Ntonda school	117	337	142	195
Zomba	Zo_164	Femba school	107	318	118	200
Zomba	Zo_165	Phuwe camp	248	549	237	312
Zomba	Zo_167	Repo camp	36	67	20	47
Zomba	Zo_169	Saima	102	258	99	159
Zomba	Zo_170	Samanwa pirmit admarc	12	54	23	31
Zomba	Zo_171	Stikwera school	423	1037	444	593
Zomba	Zo_172	St pauls school	99	677	345	332
Zomba	Zo_173	St Peters	224	1035	423	612
Zomba	Zo_175	Zaone	12	46	20	26
Zomba	Zo_178	Chingwa school	23	80	45	46
Zomba	Zo_183	Sakalawe	33	129	55	74
Zomba	Zo_184	Mwazi nursery	142	728	389	339
Zomba	Zo_185	Kathebe	141	724	240	484
Zomba	Zo_187	Mpinda mosque	3	12	3	9
Zomba	Zo_188	Mulawa School	105	396	181	208
Zomba	Zo_189	Lihoma	67	388	168	220
Zomba	Zo_19					