

28.03.24

**Sudoku** Mild No 14,790

|   |   |   |   |   |   |   |   |   |
|---|---|---|---|---|---|---|---|---|
|   |   |   |   |   |   | 8 |   | 1 |
| 2 |   |   | 7 |   |   |   | 4 |   |
|   | 3 | 8 |   | 5 |   |   |   |   |
|   |   | 5 | 3 | 4 |   | 1 | 8 |   |
|   |   |   |   |   | 2 |   |   |   |
|   |   | 9 | 6 | 8 |   | 2 | 5 |   |
|   | 1 | 6 |   | 2 |   |   |   |   |
| 3 |   |   | 4 |   |   |   | 2 |   |
|   |   |   |   |   |   | 3 |   | 5 |

**Fiendish** No 14,791

|   |   |   |   |   |   |   |  |   |
|---|---|---|---|---|---|---|--|---|
|   |   | 3 | 4 |   |   | 8 |  |   |
|   |   |   |   |   |   |   |  |   |
|   | 1 |   |   |   | 8 |   |  | 5 |
| 5 |   |   | 8 |   |   | 4 |  |   |
| 8 |   | 1 | 7 |   |   |   |  |   |
| 6 |   |   |   | 1 | 5 |   |  | 9 |
| 9 |   |   |   | 3 |   |   |  | 4 |
|   | 5 |   |   |   |   | 3 |  |   |
|   |   | 4 | 9 | 8 | 7 |   |  |   |

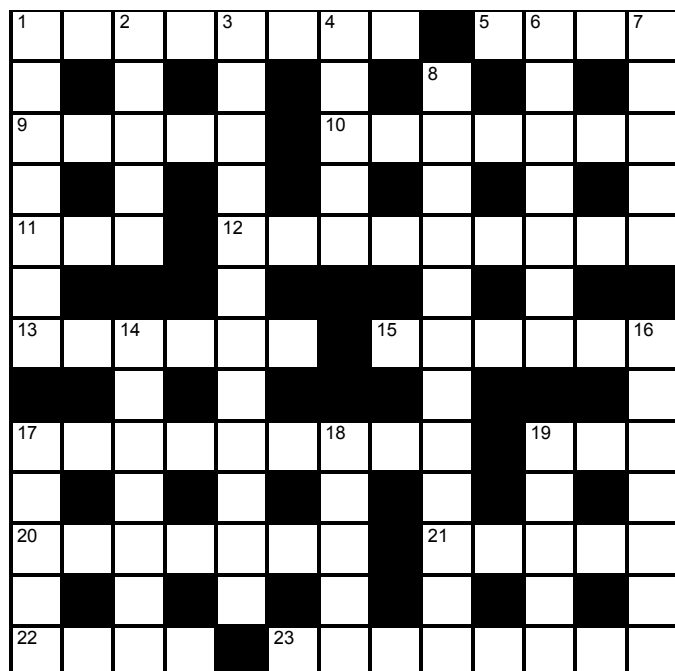
**Super fiendish** No 14,792

|   |   |   |   |   |   |   |   |   |
|---|---|---|---|---|---|---|---|---|
|   | 3 |   |   |   |   | 7 |   |   |
| 7 |   | 2 |   | 3 |   |   |   | 4 |
|   | 1 |   |   |   | 6 | 5 |   |   |
|   |   |   |   | 2 | 7 | 4 |   |   |
|   |   | 7 |   |   |   | 1 |   |   |
|   |   | 1 | 9 | 4 |   |   |   |   |
|   |   | 5 | 8 |   |   |   | 4 |   |
| 9 |   |   |   | 5 |   | 3 |   | 2 |
|   |   | 6 |   |   |   |   | 5 |   |

© PUZZLER MEDIA

**Cluelines** Stuck on Sudoku, Killer or KenKen? Call 0901 293 6263 before midnight to receive four clues for any of today's puzzles. Calls cost £1 plus your telephone company's network access charge. SP: Spoke, 0333 202 3390 (Mon-Fri 9am-5.30pm).

The Times Quick Cryptic No 2635 by Teazel



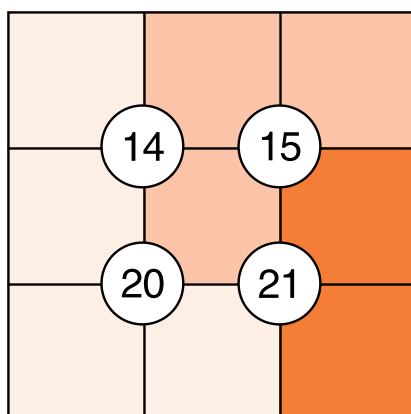
Across

- 1 Having these at Christmas is insane? (8)
- 5 Not initially a polite address to woman or man (4)
- 9 Loud number is by Yankee (5)
- 10 Some of the media, working, waste no time (5,2)
- 11 Source of money shortly provides pleasure (3)
- 12 Rebel is concealing name, demanding attention (9)
- 13 Object to being given another errand? (6)
- 15 Prepare leftovers: hot, consume fully (4,2)
- 17 Not manage to think straight, so find nothing to go with gin (2,3,2,2)
- 19 Loaf and maybe some baked beans here (3)
- 20 Where one has an elevated religious calling (7)
- 21 Jacket starts off the uniform, newly in colour (5)
- 22 Blowing hard, losing weight in a type of racing (4)
- 23 Flower's unusual drainage (8)

Down

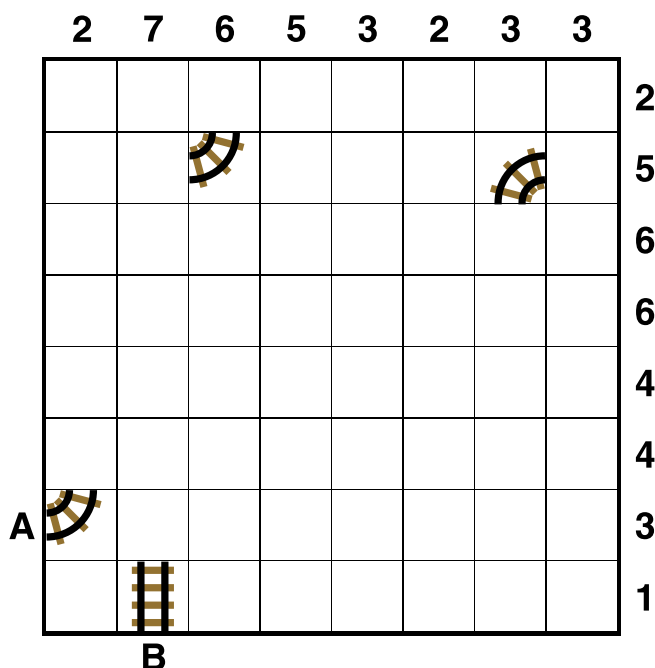
- 1 Hold discussion about one's evergreen? (7)
- 2 Arrange, being ill-intentioned, to get rid of Mike (5)
- 3 Vital approval for four flats, for example (3,9)
- 4 One is defenceless on these, which the experienced know (5)
- 6 Proper to include son in lineage (7)
- 7 Painter late in the morning rising (5)
- 8 Deteriorate badly around noon: made to face another way (12)
- 14 Disdained starter of salami: like some beef? (7)
- 16 Criticise a prophet, do we hear, for universal remedy (7)
- 17 Curb ambition to take in animal film (5)
- 18 Obese wife given a judicial opinion (5)
- 19 Backing group of musicians in joint (5)

Suko No 4075



Place the numbers 1 to 9 in the spaces so that the number in each circle is equal to the sum of the four surrounding spaces, and each colour total is correct

Train Tracks No 2205



Lay tracks to enable the train to travel from village A to village B. The numbers indicate how many sections of track go in each row and column. There are only straight sections and curved sections. The track cannot cross itself.

Word watch  
David Parfitt

**Culiciform**

- a Cup-shaped
- b Resembling a gnat
- c An obsolete anaesthetic

**Juratory**

- a Moving in circles
- b Pertaining to oaths
- c Relating to a geological period

**En pantoufles**

- a Relaxed, off-guard
- b In charge of the household
- c Out of breath

Tetonor Fiendish No 452

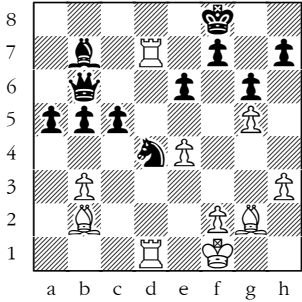
|     |     |     |     |
|-----|-----|-----|-----|
| 72  | 22  | 120 | 34  |
|     |     |     |     |
| 27  | 140 | 62  | 117 |
|     |     |     |     |
| 200 | 17  | 152 | 30  |
|     |     |     |     |
| 42  | 176 | 33  | 145 |
|     |     |     |     |

|   |   |   |   |    |  |  |    |  |  |  |
|---|---|---|---|----|--|--|----|--|--|--|
| 2 | 5 | 8 | 9 | 10 |  |  | 20 |  |  |  |
|---|---|---|---|----|--|--|----|--|--|--|

When complete, the strip below the grid can be split into eight pairs of numbers. Adding the numbers in a pair gives one of the 16 numbers in the grid. Multiplying them gives a different number in the grid. For example, a 4 and 6 in the strip could be paired to make 10 (4+6) and 24 (4x6) in the grid. Enter each sum below the corresponding number in the grid. The blanks in the strip must be deduced, bearing in mind the numbers are listed in ascending order.

The next Tetonor puzzle will appear on Tuesday

Winning Move



**White to play.** This position is from Yang-Bindrich, Titled Tuesday, chess.com 2024.

In this column I have often referred to the piece count, whereby each unit is assigned a value. Pawns are one, knights and bishops three, the rooks five and the queen nine. So, here, the logical "point-count" capture for White is l Bxd4, which is what was played. What would actually have been much better?

Codeword No 5174

|    |    |    |    |    |    |    |    |    |    |    |    |    |
|----|----|----|----|----|----|----|----|----|----|----|----|----|
| 15 | 24 | 14 | 25 | 26 | 14 |    | 8  | 5  | 10 | 14 | 13 | 7  |
| 22 |    | 3  |    | 4  |    |    |    | 23 |    | 13 |    | 13 |
| 24 | 22 | 19 |    | 8  | 5  | 23 | 7  | 13 | 24 | 17 | 2  | 12 |
| 11 |    | 14 |    | 23 |    | 13 |    | 17 |    |    |    | 23 |
| 8  | 16 | 20 | 26 |    | 5  | 10 | 16 | 17 | 16 | 6  | 4  | 14 |
| 12 |    | 8  |    | 22 |    | 7  |    | 14 |    | 4  |    | 7  |
|    |    | 16 | 7  | 21 | 10 | 22 | 26 | 24 | 16 | 22 |    |    |
| 22 |    | 1  |    | 8  |    | 20 |    | 8  |    | 17 |    | 18 |
| 10 | 23 | 14 | 17 | 22 | 10 | 16 | 5  |    | 17 | 13 | 3  | 16 |
| 13 |    |    |    | 24 |    | 4  |    | 13 |    | 17 |    | 26 |
| 17 | 10 | 16 | 21 | 14 | 8  | 7  | 13 | 20 |    | 16 | 17 | 8  |
| 22 |    | 5  |    | 17 |    |    |    | 17 |    | 22 |    | 13 |
| 10 | 14 | 14 | 15 | 14 | 10 |    | 7  | 16 | 20 | 20 | 22 | 9  |

A B C D E F G H I J K L M N O P Q R S T U V W X Y Z

|    |    |    |    |    |    |    |    |    |    |    |    |    |
|----|----|----|----|----|----|----|----|----|----|----|----|----|
| 1  | 2  | 3  | 4  | 5  | 6  | 7  | 8  | 9  | 10 | 11 | 12 | 13 |
| 14 | 15 | 16 | 17 | 18 | 19 | 20 | 21 | 22 | 23 | 24 | 25 | 26 |

Every letter in this crossword-style grid is represented by a number from 1 to 26. Each letter of the alphabet appears in the grid at least once. Use the letters already provided to work out the identity of further letters. Enter letters in the main grid and the smaller reference grid until all 26 letters of the alphabet have been accounted for. Proper nouns are excluded. *Yesterday's solution, right*

**Cluelines Stuck on Codeword?** To receive 4 random clues call 0901 293 6262 or text TIMECODE to 64343. Calls cost £1 plus your telephone company's network access charge. Texts cost £1 plus your standard network charge. For the full solution call 0905 757 0142. Calls cost £1 per minute plus your telephone company's network access charge. SP: Spoke, 0333 202 3390 (Mon-Fri, 9am-5.30pm).

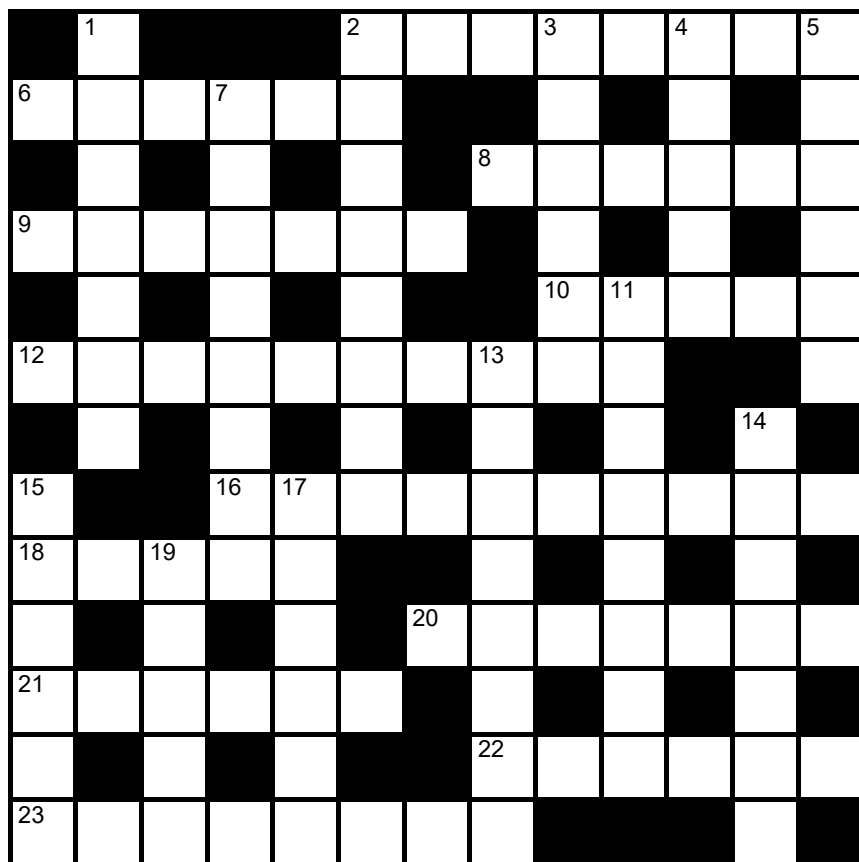
Lexica No 7327

No 7328

|     |   |   |   |   |   |   |   |   |   |   |   |   |     |     |   |   |   |   |   |   |   |   |   |   |   |   |     |
|-----|---|---|---|---|---|---|---|---|---|---|---|---|-----|-----|---|---|---|---|---|---|---|---|---|---|---|---|-----|
| ... | S | : | E | : | U | : | ● | : | Z | : | L | : | ... | ... | D | : | O | : | S | : | A | : | O | : | K | : | ... |
| C   | ■ |   |   |   |   |   |   |   |   |   |   |   | A   | ●   | ■ |   | ■ | ■ | ■ | ■ | ■ | ■ | ■ | ■ | ■ | ■ | ●   |
| ... | ■ |   |   |   |   |   |   |   |   |   |   |   | E   | H   | ■ |   | ■ | ■ | ■ | ■ | ■ | ■ | ■ | ■ | ■ | E |     |
| A   | ■ |   |   |   |   |   |   |   |   |   |   |   | O   | A   | ■ |   | ■ | ■ | ■ | ■ | ■ | ■ | ■ | ■ | ■ | I |     |
| ... | ■ |   |   |   |   |   |   |   |   |   |   |   | O   | P   | ■ |   | ■ | ■ | ■ | ■ | ■ | ■ | ■ | ■ | ■ | I |     |
| ... | ■ |   |   |   |   |   |   |   |   |   |   |   | ●   | I   | ■ |   | ■ | ■ | ■ | ■ | ■ | ■ | ■ | ■ | ■ | E |     |
| L   | ■ |   |   |   |   |   |   |   |   |   |   |   | T   | T   | ■ |   | ■ | ■ | ■ | ■ | ■ | ■ | ■ | ■ | ■ | R |     |
| F   | ■ |   |   |   |   |   |   |   |   |   |   |   |     |     | ■ |   | ■ | ■ | ■ | ■ | ■ | ■ | ■ | ■ | ■ |   |     |
| ... | ● | : | P | : | R | : | F | : | W | : | E | : | ... | ... | S | : | I | : | T | : | T | : | L | : | N | : | ... |

Slide the letters either horizontally or vertically back into the grid to produce a completed crossword. Letters are allowed to slide over other letters

**times2 Crossword No 9490**



**Across**

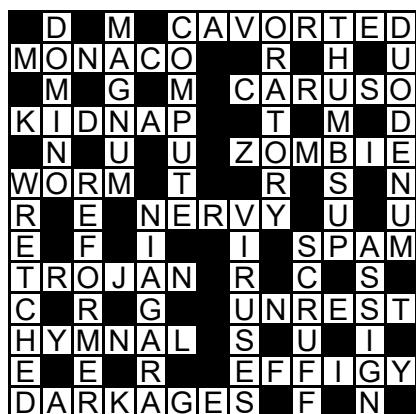
- 2 US term for a lift (8)
- 6 Point of peak intensity (6)
- 8 Conservatives (6)
- 9 Appointed hour to go to sleep (7)
- 10 Compound such as a fat (5)
- 12 Type of residential property (10)

- 16 Anomaly, irregularity (10)
- 18 Sierra ---, African nation (5)
- 20 Jumping on one leg (7)
- 21 Glazed opening (6)
- 22 Fold of skin protecting an optic organ (6)
- 23 Saviour (8)

**Down**

- 1 Against the law (7)
- 2 Person sitting a test (8)
- 3 Bluish-purple colour (6)
- 4 Sully, tarnish (5)
- 5 String of prayer beads (6)
- 7 Common water bird (4,4)
- 11 Sixfold (8)
- 13 Small folded pastry (8)
- 14 Naturally illuminated at night (7)
- 15 Come into bloom (6)
- 17 Prior to (6)
- 19 Had in one's possession (5)

**Solution to Crossword 9489**



**Need help with today's puzzle?** Call 0905 757 0143 to check the answers. Calls cost £1 per minute plus your telephone company's network access charge. SP: Spoke, 0333 202 3390 (Mon-Fri 9am-5.30pm).

### KenKen Difficult No 6166

|    |    |     |    |    |    |
|----|----|-----|----|----|----|
| 6× |    | 15+ |    |    | 4− |
| 2÷ |    | 7+  |    |    |    |
| 3− | 4  | 1−  |    | 1− |    |
|    | 1− |     | 2÷ |    | 8+ |
| 6+ |    | 5+  | 2÷ |    |    |
| 7+ |    |     |    | 2− |    |

All the digits 1 to 6 must appear in every row and column. In each thick-line "block", the target number in the top left-hand corner is calculated from the digits in all the cells in the block, using the operation indicated by the symbol.

### Futoshiki No 4714

|   |   |  |   |   |   |
|---|---|--|---|---|---|
|   |   |  |   | > |   |
|   |   |  | ^ |   |   |
|   |   |  |   |   |   |
|   |   |  | v |   |   |
| 3 |   |  |   |   |   |
| ^ | ^ |  |   |   |   |
|   | 4 |  | < |   | > |
|   |   |  | < |   |   |

Fill the blank squares so that every row and column contains each of the numbers 1 to 5 once only. The symbols between the squares indicate whether a number is larger (>) or smaller (<) than the number next to it.

### Kakuro No 3673

|    |    |    |    |    |  |    |    |    |    |    |
|----|----|----|----|----|--|----|----|----|----|----|
|    |    | 7  | 28 | 16 |  | 7  | 40 |    | 31 | 21 |
|    | 21 |    |    |    |  | 3  |    |    | 16 |    |
| 37 | 14 |    |    |    |  | 16 |    |    | 17 |    |
| 19 |    |    |    | 39 |  |    |    |    | 21 |    |
|    |    |    |    | 33 |  |    |    |    |    |    |
|    | 17 | 39 | 11 |    |  | 6  | 3  | 9  |    | 11 |
| 14 |    |    |    | 35 |  |    |    |    |    |    |
|    |    |    | 8  |    |  |    |    |    |    |    |
| 30 |    |    |    |    |  |    |    |    | 4  |    |
|    |    |    |    |    |  |    |    | 27 |    |    |
|    | 24 | 7  |    |    |  | 24 | 12 | 14 | 6  | 4  |
| 39 |    |    |    |    |  |    |    | 7  |    |    |
|    |    |    |    |    |  |    | 9  |    |    |    |
| 14 |    |    | 36 |    |  |    |    |    |    |    |
| 17 |    |    | 16 |    |  | 19 |    |    |    |    |

Fill the grid using the numbers 1 to 9 only. The numbers in each horizontal or vertical run of white squares add up to the total in the triangle to its left or above it. The same number may occur more than once in a row or column, but not within the same run of white squares.

© PUZZLER-MEDIA

### Quintagram®

Solve all five cryptic clues using each letter underneath once only

1 Animal group caught reportedly (4)

— — — —

2 Party needing weirdly blue drink (6)

— — — — — —

3 Girl: what to do if she is cold? (7)

— — — — — — —

4 Alert raised by socialists? (3,4)

— — — — — — —

5 Link she forged with one city (8)

— — — — — — — —

|   |   |   |   |   |   |   |   |
|---|---|---|---|---|---|---|---|
| A | A | B | D | D | D | E | E |
| E | E | E | E | F | G | H | H |
| H | H | I | I | K | L | L | L |
| N | O | R | R | R | S | T | U |

## Brain Trainer

|               |            |            |             |              |       |              |             |           |             |     |               |  |
|---------------|------------|------------|-------------|--------------|-------|--------------|-------------|-----------|-------------|-----|---------------|--|
| <b>EASY</b>   | <b>66</b>  | HALF OF IT | - 5         | ÷ 7          | x 11  | TRIPLE IT    | + 1/4 OF IT | DOUBLE IT | ÷ 3         | x 2 | <b>ANSWER</b> |  |
| <b>MEDIUM</b> | <b>168</b> | ÷ 4        | + 5/6 OF IT | x 4          | + 112 | + 7/10 OF IT | DOUBLE IT   | - 53      | - 4/5 OF IT | x 4 | <b>ANSWER</b> |  |
| <b>HARDER</b> | <b>422</b> | HALF OF IT | - 103       | - 9/12 OF IT | ÷ 3   | SQUARE IT    | TRIPLE IT   | - 3       | + 7/8 OF IT | x 3 | <b>ANSWER</b> |  |

## Polygon



From these letters, make words of **four** or more letters, always including the central letter. Answers must be in the *Concise Oxford Dictionary*, excluding capitalised words, plurals, conjugated verbs (past tense etc), adverbs ending in LY, comparatives and superlatives.  
**How you rate** 9 words, average; 13, good; 18, very good; 24, excellent

### Yesterday's answers

druse, duel, dueler, dulse, elude, ileus, leisure, **leisured**, lieu, lues, lure, lurid, residue, reuse, rude, rule, ruled, ruse, slue, slur, suede, suer, surd, sure, used, user

## Cell Blocks No 5057

|   |   |   |   |   |   |   |
|---|---|---|---|---|---|---|
|   |   | 2 | 4 |   | 2 |   |
|   | 4 |   |   |   |   |   |
|   |   |   |   | 2 |   |   |
|   |   |   | 3 |   |   |   |
|   |   |   |   |   | 4 | 6 |
| 8 |   | 5 | 3 |   |   |   |
| 2 |   |   |   |   | 4 |   |

Divide the grid into square or rectangular blocks, each containing one digit only. Every block must contain the number of cells indicated by the digit inside it.

© PUZZLER MEDIA

## Set Square No 3676

|    |    |    |   |      |
|----|----|----|---|------|
|    | ×  | 6  | - | = 23 |
| ×  |    | +  |   | +    |
|    | ×  |    | - | = 37 |
| -  |    | ×  |   | ×    |
|    | +  | 9  | × | = 77 |
| =  | =  | =  |   |      |
| 30 | 99 | 28 |   |      |

Enter each of the numbers from 1 to 9 in the grid, so that the six sums work. We've placed two numbers to get you started. Each sum should be calculated left to right or top to bottom.

© PUZZLER MEDIA

Please note, BODMAS does not apply

## Killer Gentle No 9386

|    |    |    |   |    |    |    |    |    |    |
|----|----|----|---|----|----|----|----|----|----|
| 8  |    |    |   | 16 |    | 21 |    |    | 8  |
| 7  | 17 | 13 | 8 | 6  |    |    |    | 16 |    |
|    |    |    |   | 4  | 16 |    |    |    | 23 |
| 9  | 6  | 17 |   |    |    |    |    | 3  |    |
|    |    | 9  |   | 18 |    |    |    |    |    |
| 16 |    | 4  |   | 8  |    | 17 | 8  | 11 |    |
| 6  |    | 12 |   | 7  | 14 |    |    |    |    |
| 30 |    |    |   |    |    |    | 12 | 3  |    |
|    | 10 |    |   | 22 |    |    |    |    |    |

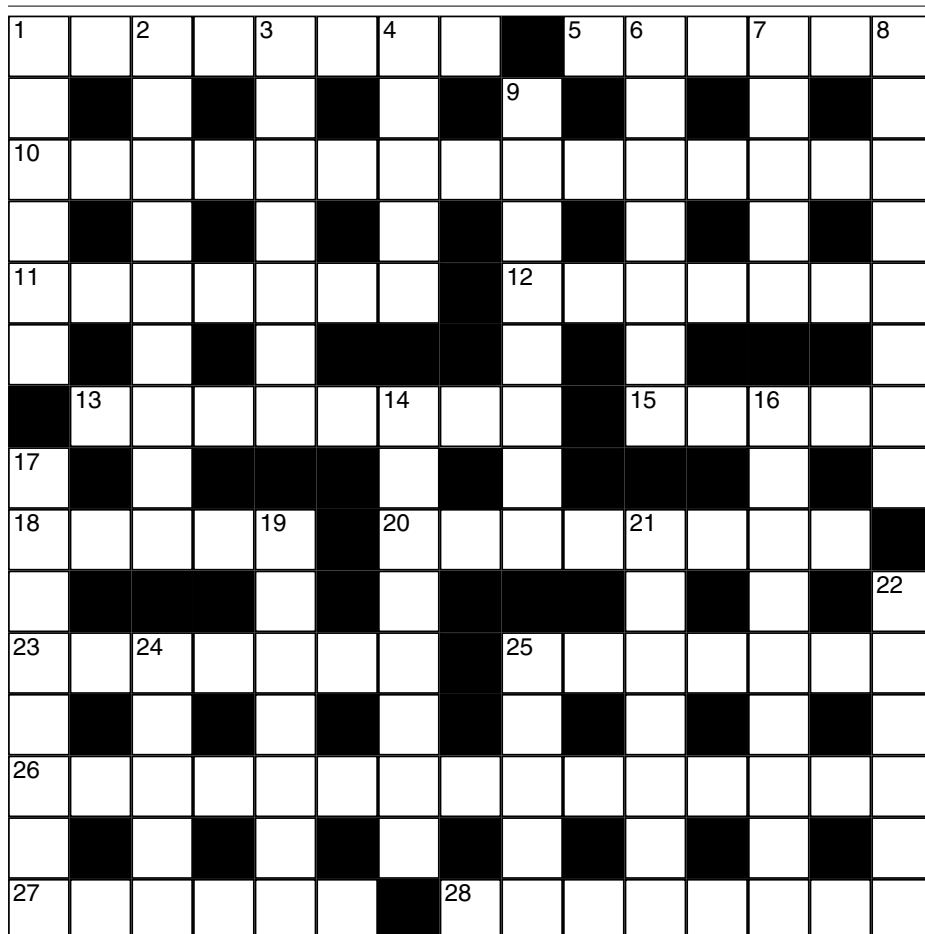
## Killer Tough No 9387

|    |    |    |    |    |    |    |    |    |
|----|----|----|----|----|----|----|----|----|
| 24 |    | 23 |    |    | 12 |    | 17 | 28 |
|    |    | 23 |    |    |    |    |    |    |
| 19 |    |    |    | 18 |    | 9  |    |    |
|    | 9  | 17 |    |    | 16 |    |    |    |
|    |    |    |    |    |    | 18 |    | 16 |
|    | 15 |    | 15 |    | 12 |    |    |    |
| 25 |    |    |    |    |    | 22 | 7  |    |
|    | 14 |    | 13 |    | 6  |    | 13 | 3  |
|    |    |    | 11 |    |    |    |    |    |

As with standard Sudoku, fill the grid so that every column, every row and every 3x3 box contains the digits 1 to 9. Each set of cells joined by dotted lines must add up to the target number in its top-left corner. Within each set of cells joined by dotted lines, a digit cannot be repeated.

**Cluelines** Stuck on Sudoku, Killer or KenKen? Call 0901 293 6263 before midnight to receive four clues for any of today's puzzles. Calls cost £1 plus your telephone company's network access charge. SP: Spoke, 0333 202 3390 (Mon-Fri 9am-5.30pm).

## Times Crossword 28,876



## ACROSS

- 1 Grabbed time to tour quiet Asian city (8)
- 5 Impulsive military assistant's cracking plan (6)
- 10 Old nurse had my pill that we must dissolve (4,4,3,4)
- 11 Well endowed? (3-4)
- 12 Hospital department personnel, half in need of case or grip (7)
- 13 Did dock area cross delta? (8)
- 15 Feature of gents' retailers? (5)
- 18 Spur for one mostly departed (3,2)
- 20 Stone got in your way at morning ramble's end (8)
- 23 Nancy's friends going on to make lace floor coverings (7)
- 25 Declare vests to have shrunk after spinning a few (7)
- 26 State intervening in divorce, arguably with no questions asked (15)
- 27 Praises late place for Penny, returning (6)
- 28 Shoemaker's form, when visiting doctor, is desperate (4-4)

## DOWN

- 1 Unlikely I felt that this might be wicked (6)
- 2 Glad as bed is moved, revealing pouch by seat (9)
- 3 Arab nation reversed hold on island (7)
- 4 Two centuries back, hotel becoming nick (5)
- 6 Paciest bowling to become sterile (7)
- 7 Not exactly a shock for one getting behind supporter (5)
- 8 Means to convey fuel policy after tweet (8)
- 9 Worried about brief to offer one present (8)
- 14 Hide from attack on small family (8)
- 16 State of an American boxer in capsized craft (9)
- 17 Not working to resolve complaint? (4-4)
- 19 Lack of fur, mostly, on a large puppet? (7)
- 21 Shelter with which to put up one in need? (4-3)
- 22 Misbehave in front of petfood store (4,2)
- 24 One's obliged by old townspeople to be silent (5)
- 25 Star still having all-round appeal (5)

## Yesterday's solution 28,875



Check today's answers by ringing 0905 757 0141 by midnight. Calls cost £1 per minute plus your telephone company's network access charge. SP: Spoke 0333 202 3390.

# Solutions

Quick Cryptic 2634

SMATTERING  
AWAKE  
LINEN STRIKE  
LINGER  
VANEGGBEATER  
AALNCA  
TIPTOEPEAHEN  
IOIAES  
OILPAINTS  
NEQDTR  
SOLACEENNUI  
NBERIB  
PARDONABLE

Codeword 5173

QUIRE EMPTY  
STOSSHAP  
PRIVYNOXIOUS  
ALAOINNA  
WHITLOWMOGUL  
NSYUM  
HEISTSMILE  
SUSES  
KEBABCADENZA  
EAJOI GT  
INKWELLNATTY  
NECDGHR  
FROTHPOLYP

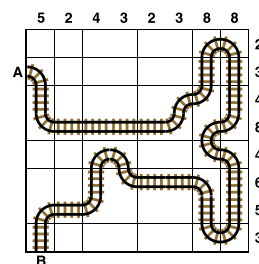
Kakuro 3672

|   |   |   |   |   |   |   |   |
|---|---|---|---|---|---|---|---|
| 1 | 2 | 3 | 5 |   | 1 | 8 | 2 |
| 2 | 4 | 1 | 7 | 3 |   | 8 | 9 |
| 3 | 1 |   |   | 4 | 8 | 3 | 6 |
|   | 3 | 1 |   |   | 9 | 4 |   |
| 1 | 7 | 2 | 6 |   | 6 | 2 | 7 |
| 3 | 9 | 4 | 8 | 7 |   | 6 | 9 |
|   |   |   | 9 | 8 |   | 8 | 6 |
| 6 | 1 | 8 | 5 | 9 | 7 |   | 1 |
| 8 | 4 | 9 | 7 |   | 8 | 9 | 1 |
|   | 2 | 6 | 3 |   | 7 | 3 | 2 |

Sudoku 14,787

|   |   |   |   |   |   |   |   |   |
|---|---|---|---|---|---|---|---|---|
| 6 | 7 | 9 | 5 | 2 | 4 | 8 | 3 | 1 |
| 8 | 4 | 5 | 6 | 3 | 1 | 7 | 2 | 9 |
| 2 | 3 | 1 | 9 | 8 | 7 | 5 | 6 | 4 |
| 5 | 6 | 3 | 8 | 1 | 9 | 2 | 4 | 7 |
| 4 | 9 | 2 | 3 | 7 | 6 | 1 | 8 | 5 |
| 1 | 8 | 7 | 4 | 5 | 2 | 6 | 9 | 3 |
| 7 | 1 | 8 | 2 | 9 | 3 | 4 | 5 | 6 |
| 9 | 2 | 4 | 1 | 6 | 5 | 3 | 7 | 8 |
| 3 | 5 | 6 | 7 | 4 | 8 | 9 | 1 | 2 |

Train Tracks 2204



Sudoku 14,788

|   |   |   |   |   |   |   |   |   |
|---|---|---|---|---|---|---|---|---|
| 8 | 9 | 1 | 6 | 7 | 3 | 4 | 2 | 5 |
| 5 | 6 | 2 | 4 | 1 | 9 | 7 | 3 | 8 |
| 4 | 7 | 3 | 5 | 2 | 8 | 1 | 6 | 9 |
| 6 | 1 | 8 | 9 | 5 | 7 | 2 | 4 | 3 |
| 9 | 3 | 4 | 8 | 6 | 2 | 5 | 1 | 7 |
| 2 | 5 | 7 | 1 | 3 | 4 | 9 | 8 | 6 |
| 3 | 2 | 6 | 7 | 9 | 1 | 8 | 5 | 4 |
| 1 | 4 | 9 | 3 | 8 | 5 | 6 | 7 | 2 |
| 7 | 8 | 5 | 2 | 4 | 6 | 3 | 9 | 1 |

Cell Blocks 5056

|   |   |    |   |   |   |
|---|---|----|---|---|---|
|   |   |    |   | 4 |   |
| 4 | 2 |    |   |   | 3 |
| 3 |   | 2  | 3 |   |   |
| 3 |   |    | 4 |   |   |
|   |   | 12 |   |   |   |
|   |   |    |   | 2 |   |
|   |   | 7  |   |   |   |

Set Square 3675

|   |   |   |   |   |
|---|---|---|---|---|
| 7 | × | 6 | - | 2 |
| × |   | ÷ |   | + |
| 4 | + | 1 | × | 9 |
| - |   | + |   | × |
| 8 | - | 3 | + | 5 |

Lexica 7325

|   |   |   |   |   |
|---|---|---|---|---|
| T | H | U | M | B |
|   | A |   |   | O |
| S | P | A | R | K |
|   | L |   | I |   |
| U |   |   | N |   |
| S | I | G | H |   |

Sudoku 14,789

|   |   |   |   |   |   |   |   |   |
|---|---|---|---|---|---|---|---|---|
| 4 | 1 | 8 | 2 | 5 | 3 | 7 | 6 | 9 |
| 6 | 7 | 3 | 8 | 1 | 9 | 2 | 5 | 4 |
| 5 | 2 | 9 | 6 | 4 | 7 | 1 | 8 | 3 |
| 9 | 6 | 5 | 4 | 3 | 1 | 8 | 2 | 7 |
| 2 | 4 | 1 | 7 | 9 | 8 | 5 | 3 | 6 |
| 8 | 3 | 7 | 5 | 2 | 6 | 9 | 4 | 1 |
| 7 | 5 | 4 | 1 | 6 | 2 | 3 | 9 | 8 |
| 1 | 9 | 6 | 3 | 8 | 5 | 4 | 7 | 2 |
| 3 | 8 | 2 | 9 | 7 | 4 | 6 | 1 | 5 |

Futoshiki 4713

|   |   |   |   |   |   |   |   |
|---|---|---|---|---|---|---|---|
| 3 | < | 4 | > | 2 | > | 1 | 5 |
| 2 |   | 3 |   | 1 | < | 5 | 4 |
| 5 |   | 1 |   | 4 |   | 3 | 2 |
| 1 |   | 2 | < | 5 |   | 4 | > |
| 4 |   | 5 |   | 3 |   | 2 | > |

KenKen 6165

|   |   |   |   |   |   |
|---|---|---|---|---|---|
| 6 | 2 | 4 | 5 | 3 | 1 |
| 2 | 4 | 1 | 3 | 6 | 5 |
| 1 | 5 | 6 | 2 | 4 | 3 |
| 3 | 6 | 2 | 1 | 5 | 4 |
| 5 | 1 | 3 | 4 | 2 | 6 |
| 4 | 3 | 5 | 6 | 1 | 2 |

Lexica 7326

|   |   |   |   |   |   |
|---|---|---|---|---|---|
| D | R | A | W | E | R |
| O |   |   | O |   | E |
| G | L | A | N | C | E |
|   | A |   |   |   | K |
| M |   |   |   |   |   |
| P | O | R | T |   |   |

## Today's solutions

Killer 9384

|   |   |   |   |   |   |   |   |   |
|---|---|---|---|---|---|---|---|---|
| 7 | 9 | 4 | 8 | 1 | 6 | 5 | 3 | 2 |
| 3 | 6 | 8 | 9 | 5 | 2 | 1 | 7 | 4 |
| 1 | 2 | 5 | 3 | 4 | 7 | 8 | 6 | 9 |
| 6 | 5 | 7 | 4 | 8 | 3 | 9 | 2 | 1 |
| 4 | 1 | 9 | 6 | 2 | 5 | 3 | 8 | 7 |
| 2 | 8 | 3 | 7 | 9 | 1 | 6 | 4 | 5 |
| 8 | 7 | 2 | 5 | 3 | 9 | 4 | 1 | 6 |
| 9 | 3 | 1 | 2 | 6 | 4 | 7 | 5 | 8 |
| 5 | 4 | 6 | 1 | 7 | 8 | 2 | 9 | 3 |

Killer 9385

|   |   |   |   |   |   |   |   |   |
|---|---|---|---|---|---|---|---|---|
| 3 | 1 | 7 | 6 | 4 | 9 | 2 | 5 | 8 |
| 5 | 8 | 9 | 2 | 1 | 3 | 4 | 7 | 6 |
| 6 | 2 | 4 | 8 | 5 | 7 | 3 | 9 | 1 |
| 1 | 7 | 6 | 4 | 2 | 5 | 9 | 8 | 3 |
| 8 | 9 | 2 | 1 | 3 | 6 | 5 | 4 | 7 |
| 4 | 5 | 3 | 7 | 9 | 8 | 6 | 1 | 2 |
| 9 | 4 | 8 | 3 | 7 | 2 | 1 | 6 | 5 |
| 2 | 6 | 5 | 9 | 8 | 1 | 7 | 3 | 4 |
| 7 | 3 | 1 | 5 | 6 | 4 | 8 | 2 | 9 |

Cryptic Quintagram

- 1 Herd
- 2 Double
- 3 Heather
- 4 Red flag
- 5 Helsinki

Suko 4075

|   |    |   |    |   |
|---|----|---|----|---|
| 5 |    | 4 |    | 7 |
|   | 14 |   | 15 |   |
| 2 |    | 3 |    | 1 |
|   | 20 |   | 21 |   |
| 6 |    | 9 |    | 8 |

Brain Trainer

- Easy 220  
Medium 1,100  
Harder 1,350

## Word watch

**Culiciform** (b) Resembling a gnat (*Collins*)

**Juratory** (b) Pertaining to oaths (*Chambers*)

**En pantoufles** (a) Relaxed, off-guard (*OED*)

## Chess — Winning Move

White blundered with 1 Bxd4 cxd4 2 R1xd4 after which

Black went on to win. 1

R1xd4! cxd4 2 Bxd4 was the

way to go as the bishop is a

more useful attacking piece

than the rook. After 2 ... Qc6

3 Rd8+ Black is forced into a

hopeless endgame with 3 ...

Qe8 as 3 ... Ke7 4 Bf6 is mate

Fill each grid so that every column, every row and every 3x3 box contains the digits 1 to 9. Where the puzzles overlap, the rows and columns do not go beyond their usual length.

[illegible]

## Futoshiki

Fill the blank squares so that every row and column contains each of the numbers 1 to 5 once only. The symbols between the squares indicate whether a number is larger ( $>$ ) or smaller ( $<$ ) than the number next to it.

|                      |   |                      |   |                      |   |                      |
|----------------------|---|----------------------|---|----------------------|---|----------------------|
| <input type="text"/> | > | <input type="text"/> | > | <input type="text"/> | 3 | <input type="text"/> |
| <input type="text"/> |   | <input type="text"/> |   | <input type="text"/> |   | <input type="text"/> |
| <input type="text"/> |   | <input type="text"/> |   | <input type="text"/> |   | <input type="text"/> |
| <input type="text"/> |   | <input type="text"/> |   | <input type="text"/> |   | 4                    |
| <input type="text"/> | < | <input type="text"/> | > | <input type="text"/> |   | <input type="text"/> |
| <input type="text"/> |   | <input type="text"/> |   | <input type="text"/> |   | <input type="text"/> |
| <input type="text"/> | > | <input type="text"/> |   | <input type="text"/> |   | <input type="text"/> |

# Train Tracks

Lay tracks to enable the train to travel from village A to village B. The numbers indicate how many sections of track go in each row and column. There are only straight sections and curved sections. The track cannot cross itself.

## Sudoku difficult

|   |   |   |   |   |   |
|---|---|---|---|---|---|
|   | 7 |   |   | 8 | 6 |
|   |   | 8 |   | 1 | 5 |
|   |   | 4 | 8 | 7 | 3 |
|   |   |   |   | 4 | 5 |
|   | 9 | 1 |   | 6 |   |
| 1 | 6 |   | 2 | 7 | 4 |
|   | 8 | 9 | 6 |   | 2 |
|   |   | 3 |   |   |   |

## Killer deadly

Fill the grid so that every column, every row and every 3x3 box contains the digits 1 to 9. Each set of cells joined by dotted lines must add up to the target number in its top-left corner. Within each set of cells joined by dotted lines, a digit cannot be repeated.

|    |    |    |    |    |    |    |    |    |
|----|----|----|----|----|----|----|----|----|
| 9  |    | 26 | 21 |    | 33 |    |    |    |
|    |    |    |    |    |    |    | 24 |    |
| 35 | 25 | 8  |    |    | 17 | 21 |    | 15 |
|    |    |    | 21 |    |    |    |    |    |
|    |    |    |    |    |    |    |    |    |
|    |    | 6  |    | 17 | 17 |    |    |    |
|    | 21 | 9  |    |    | 18 |    | 11 | 21 |
|    |    |    | 26 |    | 4  |    |    |    |
|    |    |    |    |    |    |    |    |    |

## Suko

|    |  |    |
|----|--|----|
|    |  |    |
| 24 |  | 14 |
| 22 |  | 22 |
|    |  |    |

18 15 12

Place the numbers 1 to 9 in the spaces so that the number in each circle is equal to the sum of the four surrounding spaces, and each colour total is correct

## Codeword

Every letter in the crossword-style grid, right, is represented by a number from 1 to 26. Each letter of the alphabet appears in the grid at least once. Use the letters already provided to work out the identity of further letters. Enter letters in the main grid and the smaller reference grid until all 26 letters of the alphabet have been accounted for. Proper nouns are excluded.

|    |    |    |    |    |    |    |    |    |    |    |    |    |
|----|----|----|----|----|----|----|----|----|----|----|----|----|
| 26 | 14 | 7  | 25 |    | 8  | 10 | 14 | 3  | 20 | 13 | 3  | 9  |
| 21 |    | 21 |    | 2  |    | 7  |    | 1  |    | 3  |    | 12 |
| 12 | 11 | 14 | 12 | 22 | 13 | 7  |    | 17 | 4  | 6  | 4  | 17 |
| 5  |    | 5  |    | 5  |    | 14 |    | 10 |    | 10 |    | 17 |
| 18 | 12 | 3  | 9  | 10 |    | 26 | 4  | 3  | 7  | 13 | 17 |    |
| 12 |    |    |    | 15 |    | 1  |    |    |    | 7  |    | 14 |
| 7  | 14 | 19 | 19 | 4  | 20 |    | 2  | 10 | 17 | 4  | 18 | 3  |
| 1  |    | 5  |    |    |    | 15 |    | 14 |    |    |    | 7  |
|    | 23 | 12 | 9  | 14 | 12 | 5  |    | 22 | 13 | 12 | 5  | 12 |
| 16 |    | 14 |    | 22 |    | 10 |    | 7  |    | 26 |    | 26 |
| 10 | 14 | 9  | 21 | 22 |    | 8  | 10 | 5  | 25 | 22 | 10 | 26 |
| 3  |    | 21 |    | 4  |    | 2  |    | 1  |    | 17 |    | 4  |
| 4  | 24 | 22 | 10 | 5  | 22 | 4  | 20 |    | 20 | 1  | 4  | 20 |

A B C D E F G H I J K L M N O P Q R S T U V W X Y Z

|    |    |    |    |    |    |    |    |    |    |    |    |    |
|----|----|----|----|----|----|----|----|----|----|----|----|----|
| 1  | 2  | 3  | 4  | 5  | 6  | 7  | 8  | 9  | 10 | 11 | 12 | 13 |
| 14 | 15 | 16 | 17 | 18 | 19 | 20 | 21 | 22 | 23 | 24 | 25 | 26 |

## Mini Sudoku

Fill in the grid so that every column, every row and every 3x2 box contains the digits 1 to 6

|  |   |   |   |   |  |
|--|---|---|---|---|--|
|  |   |   |   |   |  |
|  | 1 |   | 3 | 4 |  |
|  |   | 3 | 1 |   |  |
|  |   | 2 | 5 |   |  |
|  | 3 | 1 |   | 2 |  |
|  |   |   |   |   |  |

Solutions in Monday's Times2

THE  TIMES

MindGames

Thursday March 28 2024  
Brain boost puzzles

## Yesterday's solutions

### SAMURAI

|   |   |   |   |   |   |   |   |   |   |   |   |   |   |   |   |   |   |   |   |   |
|---|---|---|---|---|---|---|---|---|---|---|---|---|---|---|---|---|---|---|---|---|
| 7 | 5 | 4 | 9 | 6 | 2 | 8 | 3 | 1 |   |   |   | 3 | 7 | 9 | 6 | 1 | 4 | 2 | 8 | 5 |
| 1 | 8 | 3 | 7 | 5 | 4 | 6 | 9 | 2 |   |   |   | 2 | 1 | 8 | 9 | 5 | 3 | 6 | 4 | 7 |
| 2 | 6 | 9 | 1 | 3 | 8 | 4 | 5 | 7 |   |   |   | 6 | 5 | 4 | 8 | 7 | 2 | 3 | 1 | 9 |
| 3 | 1 | 2 | 5 | 4 | 9 | 7 | 6 | 8 |   |   |   | 8 | 4 | 3 | 2 | 6 | 9 | 7 | 5 | 1 |
| 8 | 9 | 7 | 6 | 1 | 3 | 5 | 2 | 4 |   |   |   | 7 | 2 | 5 | 3 | 4 | 1 | 9 | 6 | 8 |
| 5 | 4 | 6 | 8 | 2 | 7 | 3 | 1 | 9 |   |   |   | 9 | 6 | 1 | 5 | 8 | 7 | 4 | 3 | 2 |
| 4 | 2 | 1 | 3 | 7 | 5 | 9 | 8 | 6 | 5 | 2 | 1 | 4 | 3 | 7 | 1 | 9 | 8 | 5 | 2 | 6 |
| 6 | 3 | 8 | 4 | 9 | 1 | 2 | 7 | 5 | 3 | 8 | 4 | 1 | 9 | 6 | 4 | 2 | 5 | 8 | 7 | 3 |
| 9 | 7 | 5 | 2 | 8 | 6 | 1 | 4 | 3 | 6 | 7 | 9 | 5 | 8 | 2 | 7 | 3 | 6 | 1 | 9 | 4 |
|   |   |   |   |   |   | 4 | 1 | 8 | 7 | 6 | 3 | 9 | 2 | 5 |   |   |   |   |   |   |
|   |   |   |   |   |   | 7 | 6 | 9 | 4 | 5 | 2 | 8 | 1 | 3 |   |   |   |   |   |   |
|   |   |   |   |   |   | 3 | 5 | 2 | 1 | 9 | 8 | 7 | 6 | 4 |   |   |   |   |   |   |
| 5 | 8 | 4 | 9 | 7 | 2 | 6 | 3 | 1 | 8 | 4 | 7 | 2 | 5 | 9 | 1 | 7 | 3 | 4 | 6 | 8 |
| 1 | 9 | 6 | 5 | 3 | 4 | 8 | 2 | 7 | 9 | 3 | 5 | 6 | 4 | 1 | 5 | 8 | 2 | 9 | 3 | 7 |
| 2 | 3 | 7 | 8 | 1 | 6 | 5 | 9 | 4 | 2 | 1 | 6 | 3 | 7 | 8 | 9 | 4 | 6 | 1 | 5 | 2 |
| 3 | 7 | 8 | 6 | 5 | 9 | 1 | 4 | 2 |   |   |   | 4 | 3 | 6 | 2 | 1 | 9 | 7 | 8 | 5 |
| 6 | 2 | 1 | 4 | 8 | 7 | 9 | 5 | 3 |   |   |   | 8 | 2 | 5 | 4 | 6 | 7 | 3 | 1 | 9 |
| 9 | 4 | 5 | 1 | 2 | 3 | 7 | 6 | 8 |   |   |   | 1 | 9 | 7 | 3 | 5 | 8 | 2 | 4 | 6 |
| 8 | 1 | 9 | 2 | 4 | 5 | 3 | 7 | 6 |   |   |   | 9 | 6 | 4 | 7 | 3 | 5 | 8 | 2 | 1 |
| 4 | 6 | 3 | 7 | 9 | 8 | 2 | 1 | 5 |   |   |   | 5 | 1 | 2 | 8 | 9 | 4 | 6 | 7 | 3 |
| 7 | 5 | 2 | 3 | 6 | 1 | 4 | 8 | 9 |   |   |   | 7 | 8 | 3 | 6 | 2 | 1 | 5 | 9 | 4 |

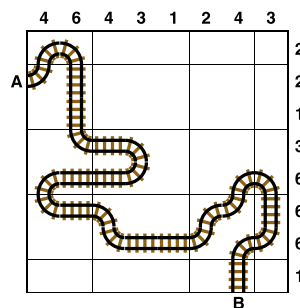
### SUKO

|   |   |   |
|---|---|---|
| 2 | 5 | 3 |
| 7 | 9 | 8 |
| 1 | 4 | 6 |

### MINI SUDOKU

|   |   |   |   |   |   |
|---|---|---|---|---|---|
| 1 | 2 | 5 | 4 | 3 | 6 |
| 4 | 3 | 6 | 5 | 1 | 2 |
| 5 | 1 | 3 | 2 | 6 | 4 |
| 2 | 6 | 4 | 3 | 5 | 1 |
| 6 | 5 | 2 | 1 | 4 | 3 |
| 3 | 4 | 1 | 6 | 2 | 5 |

### TRAIN TRACKS



### FUTOSHIKI

|   |   |   |   |   |   |   |   |
|---|---|---|---|---|---|---|---|
| 3 | 5 | 1 | 2 | 4 |   |   |   |
|   |   | ^ |   |   |   |   |   |
| 5 | 1 | 2 | < | 4 | 3 |   |   |
|   |   |   |   |   |   |   |   |
| 4 | 2 | < | 3 | 1 | 5 |   |   |
|   |   |   |   |   |   |   |   |
| 2 | < | 4 | < | 5 | 3 | > | 1 |
| ∨ |   |   |   |   |   |   |   |
| 1 | 3 | 4 | 5 | 2 |   |   |   |

### SUDOKU

|   |   |   |   |   |   |   |   |   |
|---|---|---|---|---|---|---|---|---|
| 7 | 1 | 9 | 8 | 5 | 3 | 2 | 6 | 4 |
| 5 | 2 | 6 | 1 | 9 | 4 | 3 | 7 | 8 |
| 8 | 4 | 3 | 2 | 7 | 6 | 9 | 1 | 5 |
| 9 | 6 | 2 | 5 | 1 | 7 | 8 | 4 | 3 |
| 3 | 5 | 7 | 9 | 4 | 8 | 1 | 2 | 6 |
| 4 | 8 | 1 | 6 | 3 | 2 | 5 | 9 | 7 |
| 2 | 9 | 4 | 7 | 8 | 5 | 6 | 3 | 1 |
| 6 | 3 | 8 | 4 | 2 | 1 | 7 | 5 | 9 |
| 1 | 7 | 5 | 3 | 6 | 9 | 4 | 8 | 2 |

### KILLER

|   |   |   |   |   |   |   |   |   |
|---|---|---|---|---|---|---|---|---|
| 4 | 2 | 1 | 7 | 8 | 5 | 6 | 3 | 9 |
| 6 | 3 | 5 | 9 | 2 | 4 | 1 | 7 | 8 |
| 8 | 9 | 7 | 6 | 3 | 1 | 2 | 5 | 4 |
| 5 | 7 | 2 | 3 | 4 | 9 | 8 | 6 | 1 |
| 1 | 6 | 4 | 8 | 5 | 7 | 9 | 2 | 3 |
| 9 | 8 | 3 | 1 | 6 | 2 | 5 | 4 | 7 |
| 3 | 4 | 6 | 5 | 9 | 8 | 7 | 1 | 2 |
| 7 | 5 | 8 | 2 | 1 | 3 | 4 | 9 | 6 |
| 2 | 1 | 9 | 4 | 7 | 6 | 3 | 8 | 5 |

### CODEWORD

|   |   |   |   |   |   |   |   |   |   |   |
|---|---|---|---|---|---|---|---|---|---|---|
| D | I | G | N | I | T | Y | A | B | L | Y |
| C | G |   | E |   | C | O |   |   |   | A |
| O | B | L | I | Q | U | E | O | W | N | E |
| M | O | U | T |   | M | A |   |   |   | N |
| F | L | O | R | A | E | X | P | A | N | D |
| O |   | R |   | R |   | L | Z |   |   | S |
| R | E | V | E | R | E | H | I | J | A | C |
| T |   | I |   | E |   | A |   | C |   | Y |
|   | A | S | I | L | U | M |   | A | P | P |
| S |   | I |   | L |   | U |   | T |   | A |
| M | E | T | R | E |   | S | W | E | L | T |
| U |   | O |   | D |   | E |   | I |   | K |
| G | O | R |   |   |   | E | D | I | T | I |