



"an efficient statistical system providing relevant, quality statistics for the benefit of Samoa"

CENSUS, SURVEYS AND DEMOGRAPHIC STATISTICS

**MAJOR ACHIEVEMENTS &
NEW DEVELOPMENTS
2011-2014**



Census and Surveys

- ▣ **Census** – full coverage (more costly)
 - Example: Population and Housing Census 2011, (2016), Agriculture Census 2009.
- ▣ **Sample survey** – sample 5%, 10%, (less costly)
 - Example: Demographic and Health Survey 2009, (2014), Household Income and Expenditure Survey on-going
- ▣ **Two most important requirements:**
 - 1) **Enumeration maps of the survey areas**
 - 2) **List of households (families) in the survey areas**



"An efficient statistical system providing relevant, quality statistics for the benefit of Samoa"

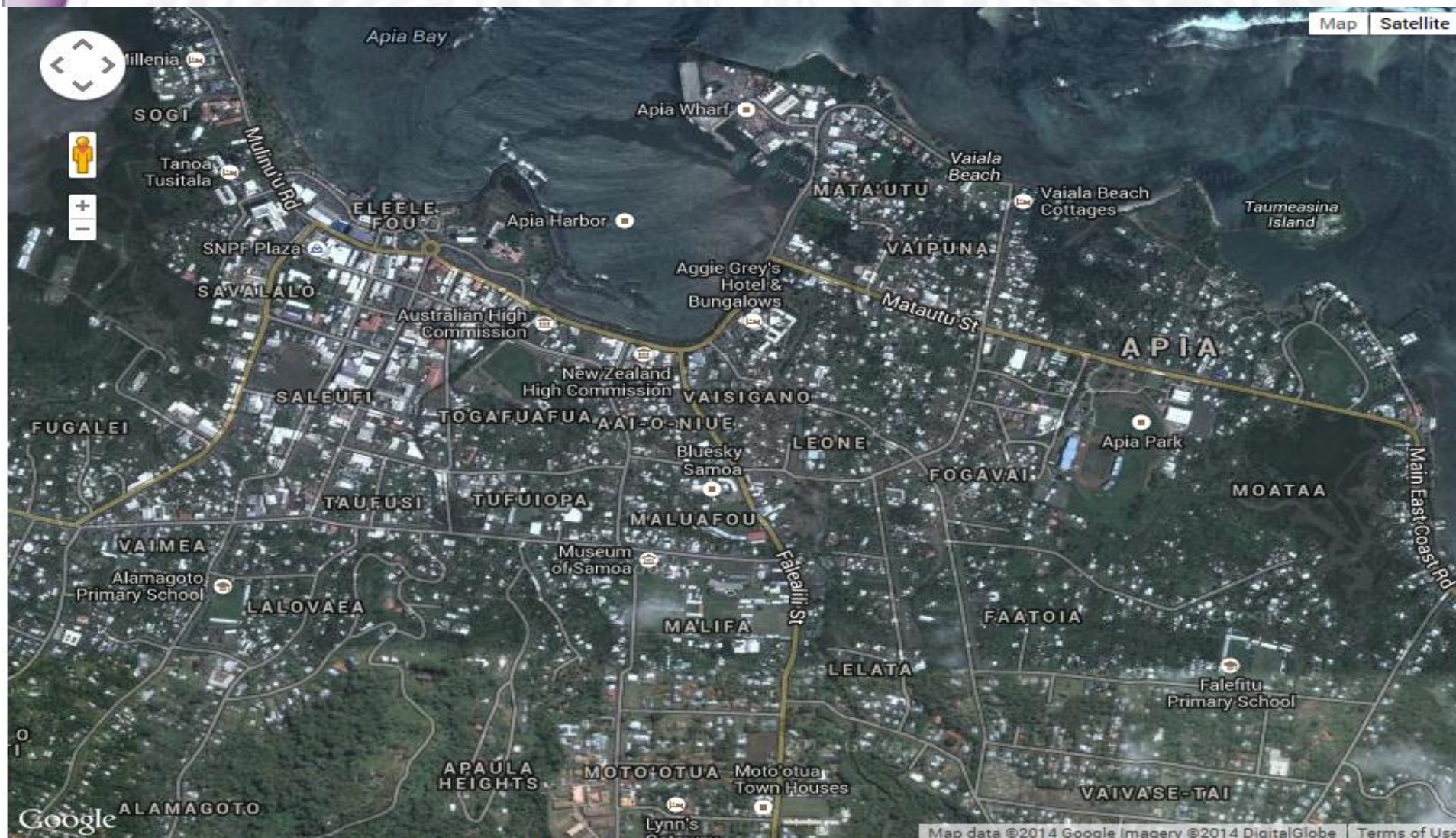
Before sketch maps & lists





an efficient statistical system providing relevant, quality statistics for the benefit of Samoa

Google Satellite Map Census 2011

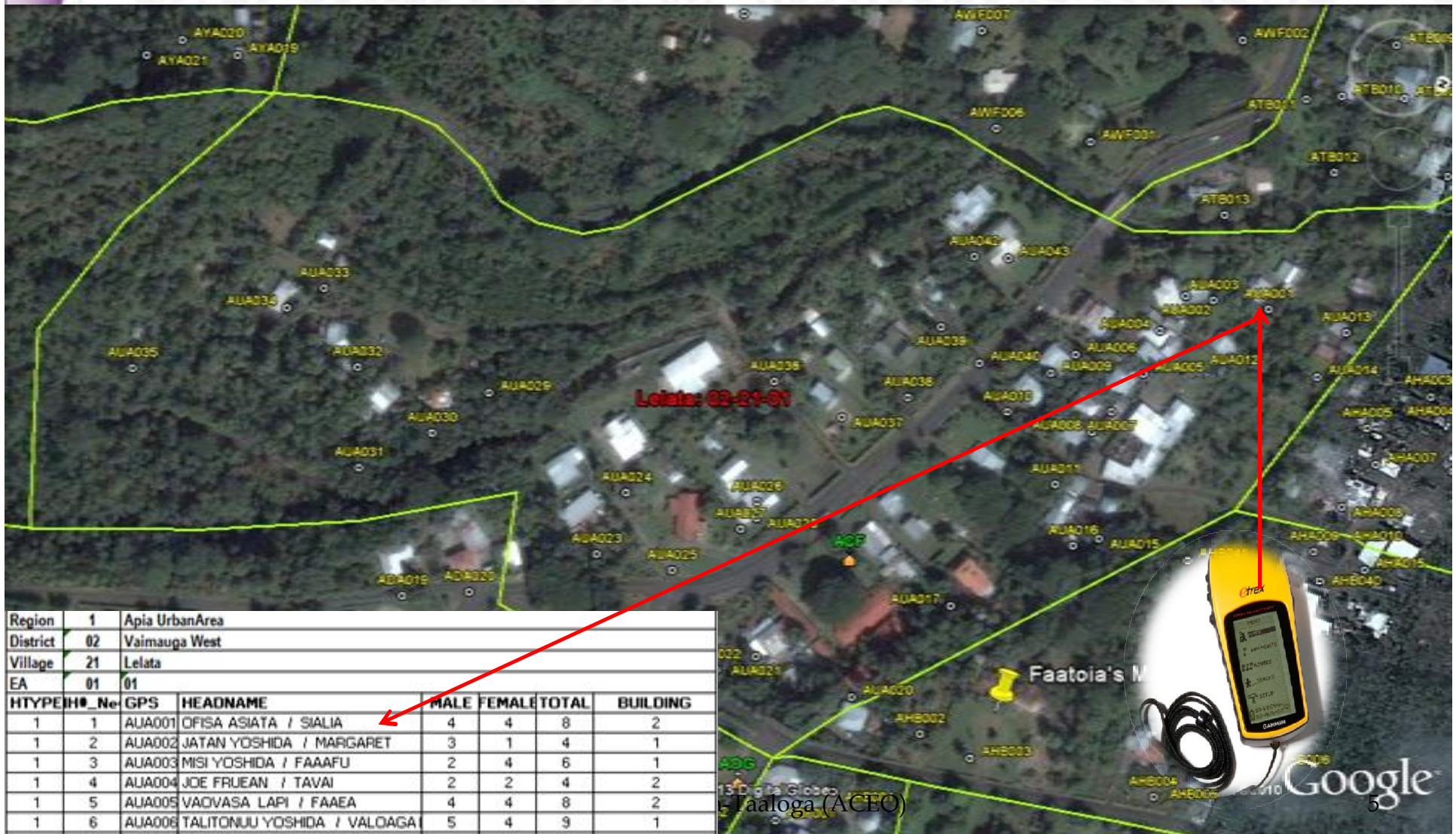


Google Maps: Searchable map/Satellite View and Map of the Independent State of Samoa.



an efficient statistical system providing relevant, quality statistics for the benefit of Samoa"

Use of GPS to List households (2011 - 26,205 waypoints)



Region	1	Apia UrbanArea						
District	02	Vaimauga West						
Village	21	Lelata						
EA	01	01						
HTYPE	H#	No	GPS	HEADNAME	MALE	FEMALE	TOTAL	BUILDING
1	1		AUA001	OFISA ASIATA / SIALIA	4	4	8	2
1	2		AUA002	JATAN YOSHIDA / MARGARET	3	1	4	1
1	3		AUA003	MISI YOSHIDA / FAAAFU	2	4	6	1
1	4		AUA004	JOE FRUEAN / TAVAI	2	2	4	2
1	5		AUA005	VACVASA LAPI / FAEA	4	4	8	2
1	6		AUA006	TALITONUU YOSHIDA / VALOAGA	5	4	9	1

Taaloga (ACEO)



"an efficient statistical system providing relevant quality statistics for the benefit of Samoa"

Before 2011 Keyboard data processing

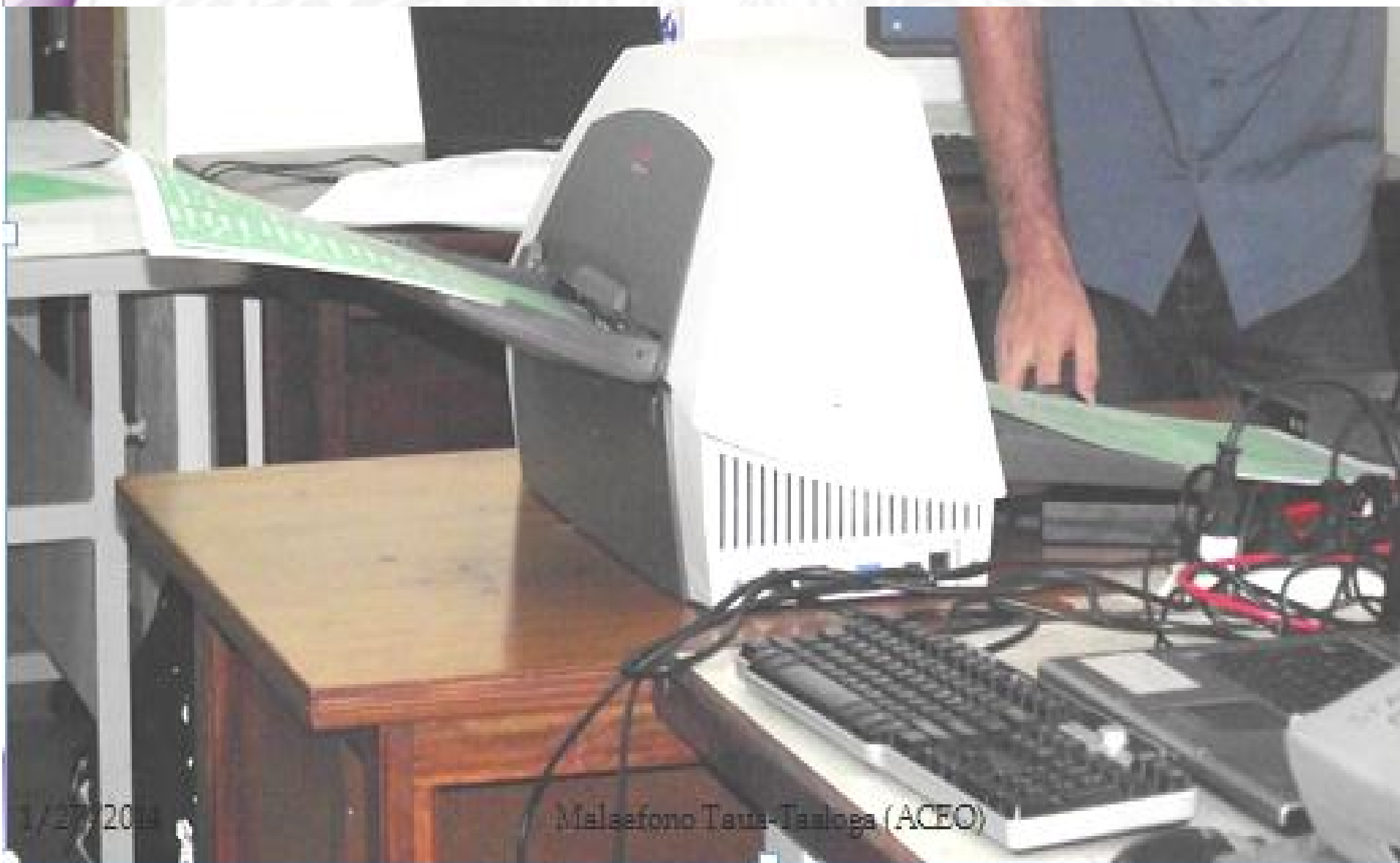




"an efficient statistical system providing relevant and timely statistics for the benefit of Samoa"

Census 2011

Scan data processing



1/27/2011

Malefono Taus-Tasoga (ACEO)



Achievements

- **Duration of data processing:**
 - ❖ Census 2006 = 11 months (Keyboard)
 - ❖ Census 2011 = 6 months (Scan)
 - ✓ **Processing time reduced by 5 months**

- **Release of final report since date of data collection:**
 - ❖ Census 2006 = 18 months
 - ❖ Census 2011 = 11 months (Top in the Pacific)
 - ✓ **Releasing of results got earlier by 7 months**



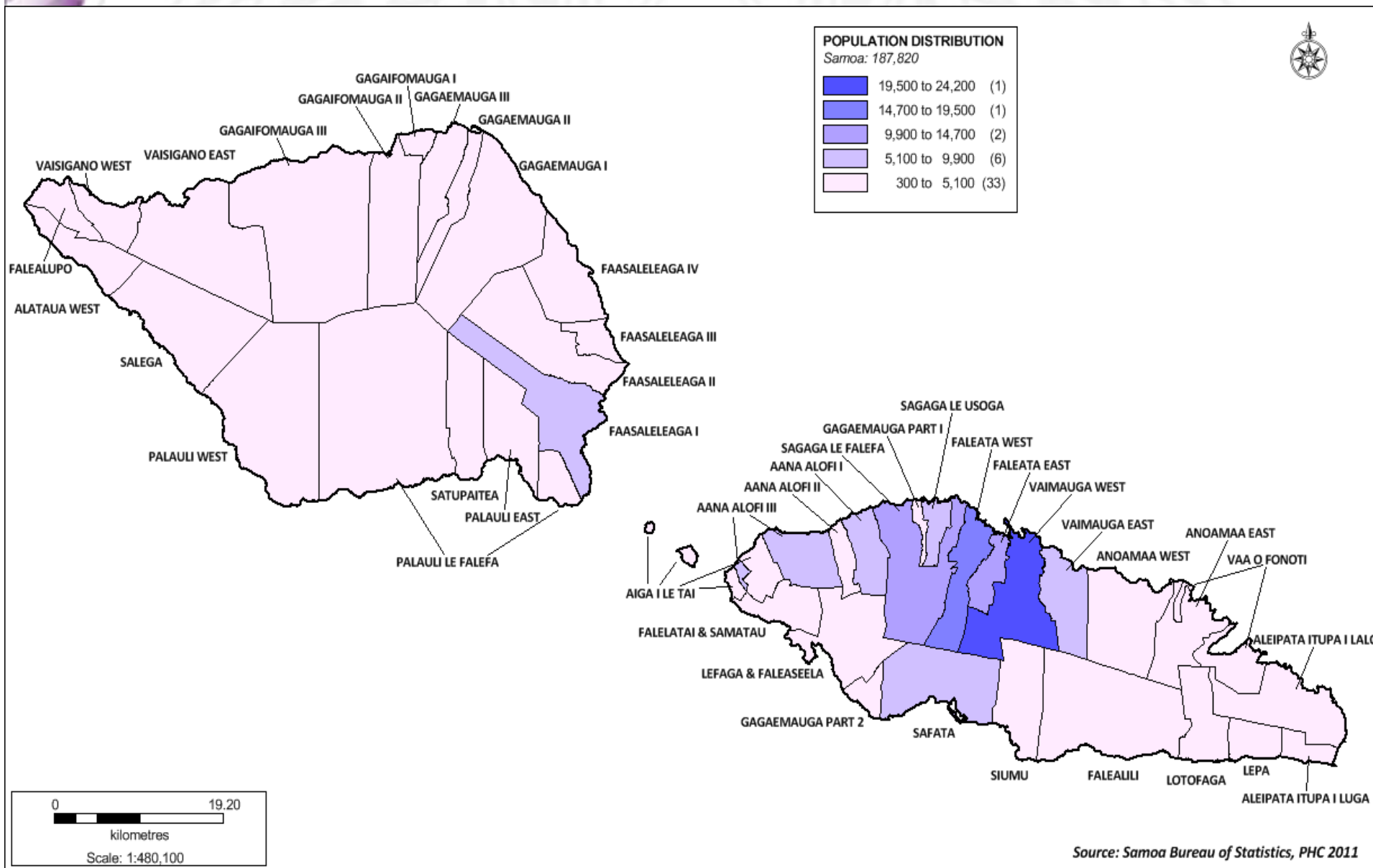
Sample size and error determination (2013)

Sample size calculator for estimating a proportion & with a detectable change to a known proportion by Ruilin Ren, PhD rren@icfi.com		Sample size for detecting a change		
		To a fixed propor. P_0		
		Type I error (α)		
		Power of test ($1-\beta$)		
		Sample size		
Current estimated proportion P	0.200	Specified size		
Target population size		Estimated Deft	1.50	
Relative standard error (RSE)		Sample Size Individual	95% confidence limits of P	
Desired RSE			Lower-limit	Upper-limit
0.400		57	0.044	0.356
0.350		74	0.063	0.337
0.300		100	0.082	0.318
0.250		144	0.102	0.298
0.200		225	0.122	0.278
0.150		400	0.141	0.259
0.100		900	0.161	0.239
0.050		3600	0.180	0.220



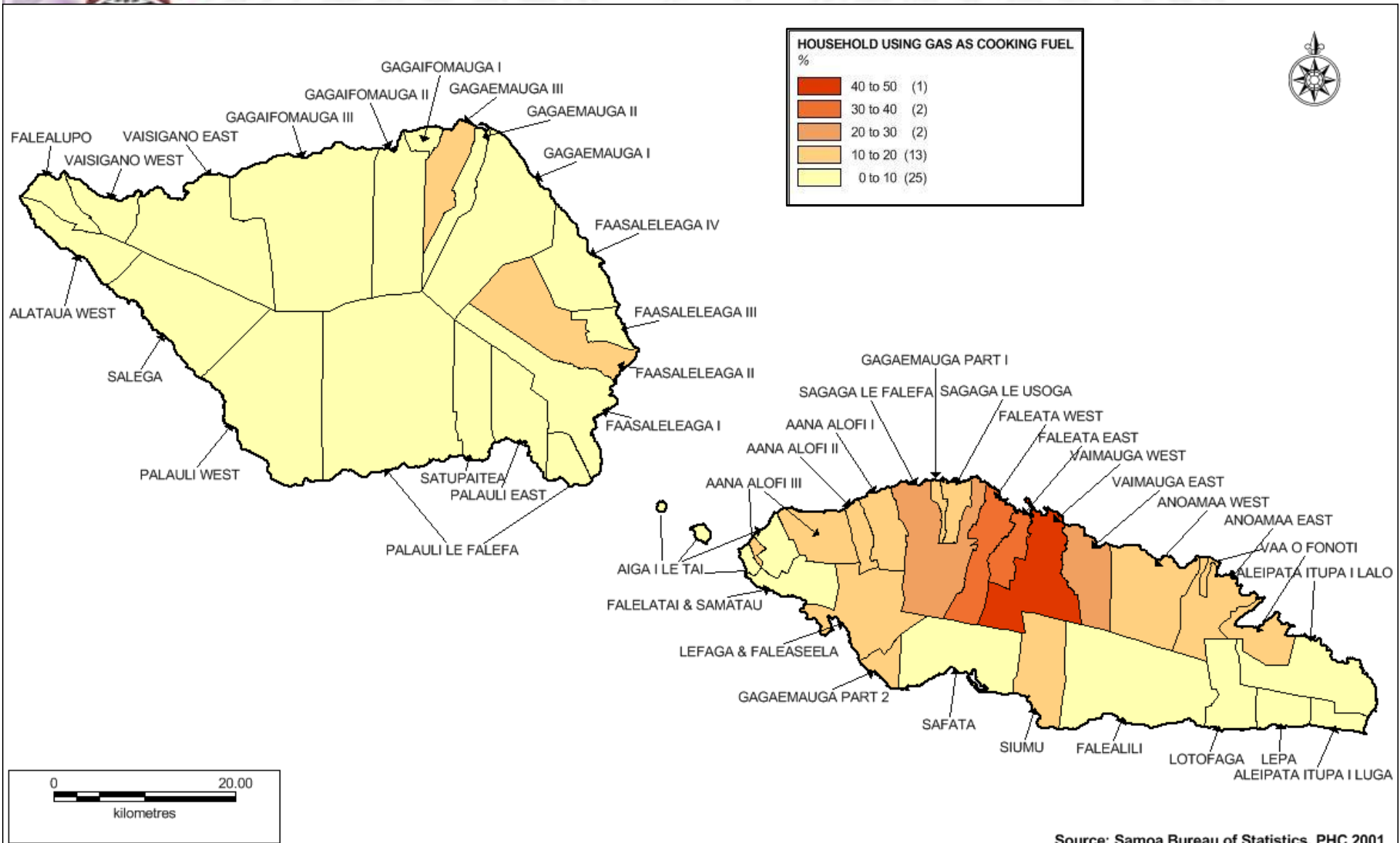
"An efficient statistical system providing relevant, quality statistics for the benefit of Samoa"

Use of thematic maps





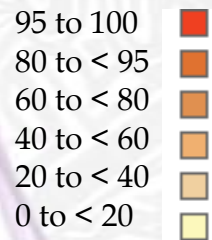
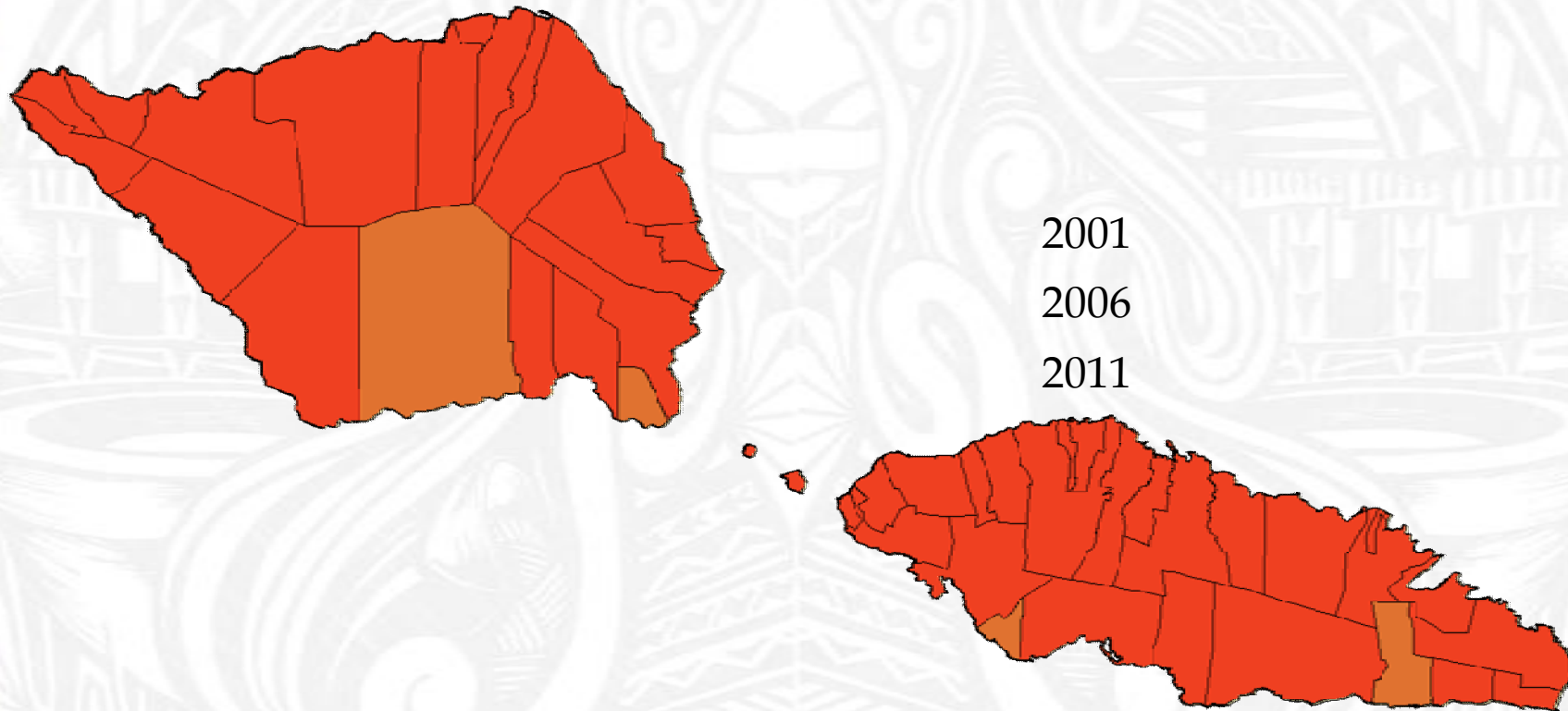
Percentage of households using gas as main source of cooking fuel by district in 2001 and 2011





an efficient statistical system providing relevant, quality statistics for the benefit of Samoa

Percentage of households using mobile phones by district in 2001, 2006 and 2011





New & future developments

- 1) **Vulnerable Index for Villages August 2013**
- 2) **Sector Coordinators and Statisticians partnership (September 2013)**
- 3) **Poverty Mapping with World Bank (February 2014)**
- 4) **Demographic Health Survey and Disability Survey 2014**
- 5) **Population and Housing Census 2016**



ACKNOWLEDGEMENT

- ▣ Government of Australia via **AusAID** for funding the census 2011 also 2006 and 2001.
- ▣ United Nations Funding for Population Activities (**UNFPA**) for technical and funding support
- ▣ Secretariat for Pacific Communities (**SPC**) in New Caledonia for technical and funding support
- ▣ SBS Institutional Strengthening Project (**PSIF**) for mentoring and capacity support
- ▣ All Sectors and Users for the challenges!!!!!!