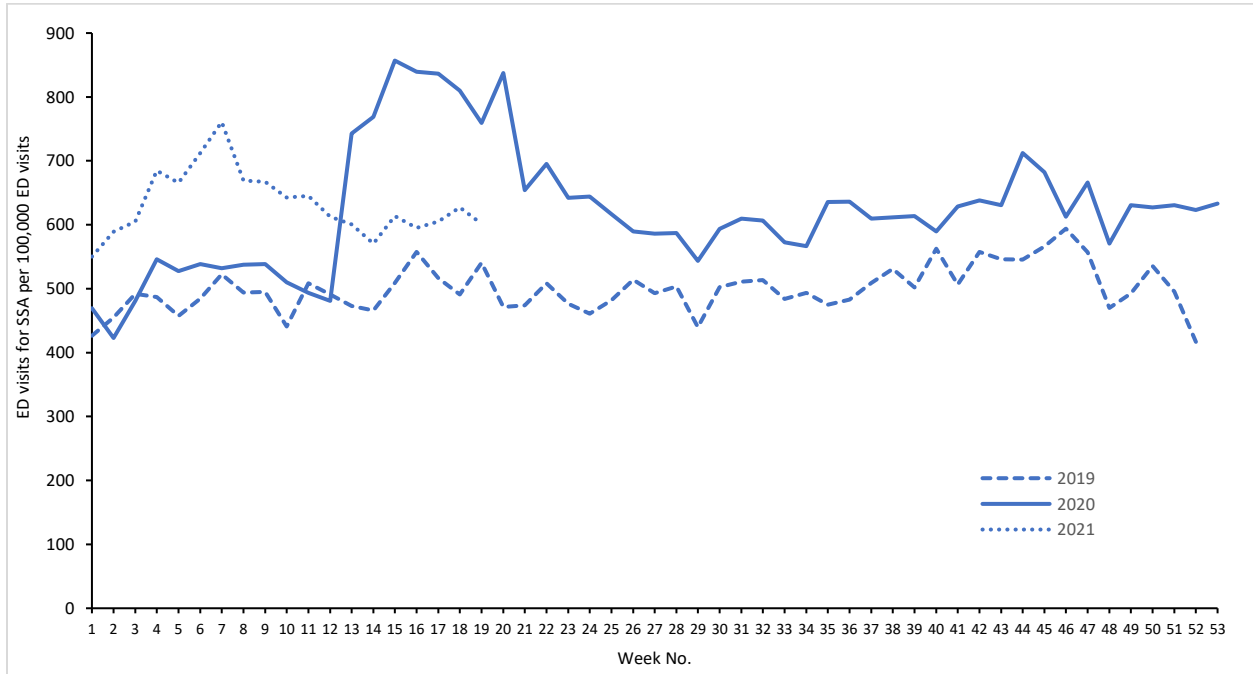
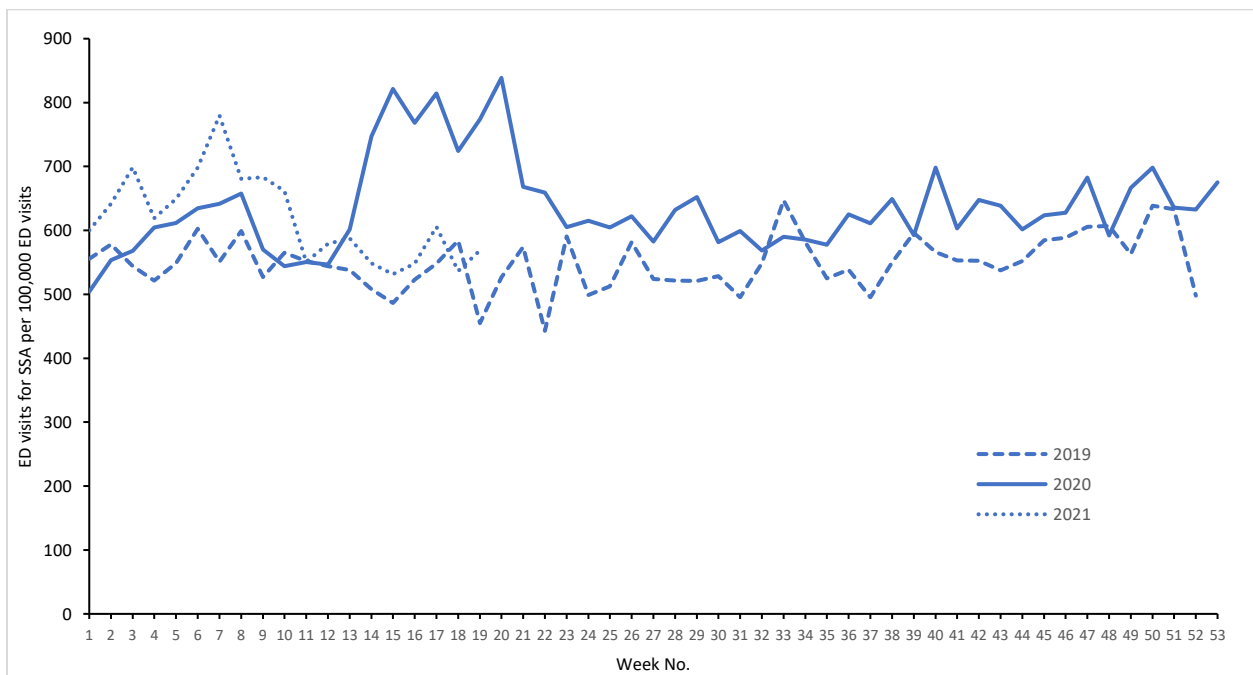


SUPPLEMENTARY FIGURE 2. Weekly number of emergency department visits* for suspected suicide attempt† per 100,000 ED visits among persons aged 18–25 years, by sex — National Syndromic Surveillance Program, United States, January 1, 2019–May 15, 2021

A. Females



B. Males



* Emergency department visits for suspected suicide attempt were identified by querying an National Syndromic Surveillance Program (NSSP) syndrome definition developed by CDC in partnership with state and local health departments (See Supplementary Table). NSSP emergency department visit data include approximately 71% of the nation's emergency departments in 49 states.

† Visits for suspected suicide attempt include visits for suicide attempt, as well as nonsuicidal self-harm