



NaTHNaC

Annual Report 2018 – 2019

OVERVIEW	3
Chair and Director’s Statement	3
GOVERNANCE	4
NaTHNaC Technical Advisory Group (TAG)	4
NaTHNaC Senior Management Team (SMT)	5
NaTHNaC Team	5
FINANCIAL REVIEW	7
NaTHNaC Financial Report	8
OPERATIONS	9
Key Service Areas	9
Core Objectives	9
Team Achievements for 2018 - 2019	12

OVERVIEW

Statement from the Chair and Director

We're pleased to present our 2018-2019 Annual Report. NaTHNaC has had another successful year with a healthy end of year financial statement. The achievements in this report are due to the remarkable commitment of all NaTHNaC staff working to deliver the best health outcomes for British Travellers. We thank them all for their hard work and remain grateful for the continuing support of our commissioners Public Health England (PHE), hosts University College London Hospitals (UCLH), and partners on NaTHNaC's Technical Advisory Group.

Our website remains a popular resource for both health professionals and travellers, and with almost 11 million page views it continues to attract new visitors, allowing us to consolidate our engagement with travellers, health professionals, travel clinics and the travel industry. Important website changes this year include updated factsheets and news items using website usage and real-time advice line data. We have also produced three interactive malaria maps making it possible to search individual destinations and see the malaria recommendations for that location. More will follow next year.

The yellow fever zone continues to be a valuable source of support for Yellow Fever Vaccination Centres (YFVCs); especially useful have been the factsheet on countries with risk of yellow fever transmission, centre search section, and the yellow fever vaccine recommendation maps. Our work with YFVCs has sadly been particularly vital this year following the report of two serious adverse incidents relating to yellow fever vaccine. As a consequence, we have been working closely with the Medicines and Healthcare products Regulatory Agency and will communicate any changes in guidelines.

Calls to our advice line continue to be of great assistance to those providing travel health advice; and the analysis of its unique data has helped inform our guidance, factsheets and training. Analysis outputs have included additional guidance on malaria, older travellers, and clinical incidents involving yellow fever vaccine. We have also hosted four webinars based on common queries to our advice line.

You can read more about our activities and achievements from page 10 onwards. Plans for this coming year include the launch of the Professional Diploma in Travel Health developed with the Liverpool School of Tropical Medicine, a new NaTHNaC course: Current Aspects in Travel Health, further improvements to our website, additional resources for YFVCs and continued partnering with the travel industry to name but a few initiatives. We remain determined to be outward-looking, connected and innovative, and look forward to further developments in 2019/2020.

Rima Makarem and Dipti Patel

GOVERNANCE

NaTHNaC was created by the Department of Health in 2002. We are now commissioned by the Public Health England (PHE) and work in partnership with our network founders:

- The Hospital for Tropical Diseases
- Liverpool School of Tropical Medicine
- London School of Hygiene and Tropical Medicine
- Public Health England
- University College London Hospital (UCLH) NHS Foundation Trust

NaTHNaC's broad aim is to protect the health of the British traveller, and it does this by providing evidence-based advice, information, and training to health professionals, travellers, the travel industry, and to national government.

NaTHNaC Technical Advisory Group

The NaTHNaC Technical Advisory Group (TAG) was formed in April 2014, and has representation from each of the NaTHNaC partners plus PHE, UCLH NHS Foundation Trust and the Department of Health. NaTHNaC is grateful for the support of each member organisation.

Technical Advisory Group Members:

Dr Nick Beeching	Liverpool School of Tropical Medicine
Professor Ron Behrens *	Hospital for Tropical Diseases
Dr Michael Brown	London School of Hygiene and Tropical Medicine
Dr Vanessa Field	NaTHNaC
Dr Vanya Gant*	University College London Hospitals NHS Foundation Trust
Dr Ines Campos Matos*	Public Health England, Travel and Migrant Health Section
Prof David Laloo	Liverpool School of Tropical Medicine
Dr Rima Makarem	Chair
Dr Ailsa Wright (ex officio)	Department of Health
Dr Dipti Patel	NaTHNaC
Professor Nick Phin	Public Health England
Ms Melanie Watts	University College London Hospitals NHS Foundation Trust
Mr John de Vial*	ABTA (observer)

* Until Dec 2018

NaTHNaC Senior Management Team (SMT)

The current NaTHNaC SMT was established by the new directors in June 2012.

The NaTHNaC SMT consists of the director, deputy director, operations and project manager, service manager, senior nurse, and clinical adviser. It is chaired by the director and meets on a quarterly basis. The SMT is responsible for the strategic and operational management of NaTHNaC and implementing any policies and strategies as agreed by the Technical Advisory Group.

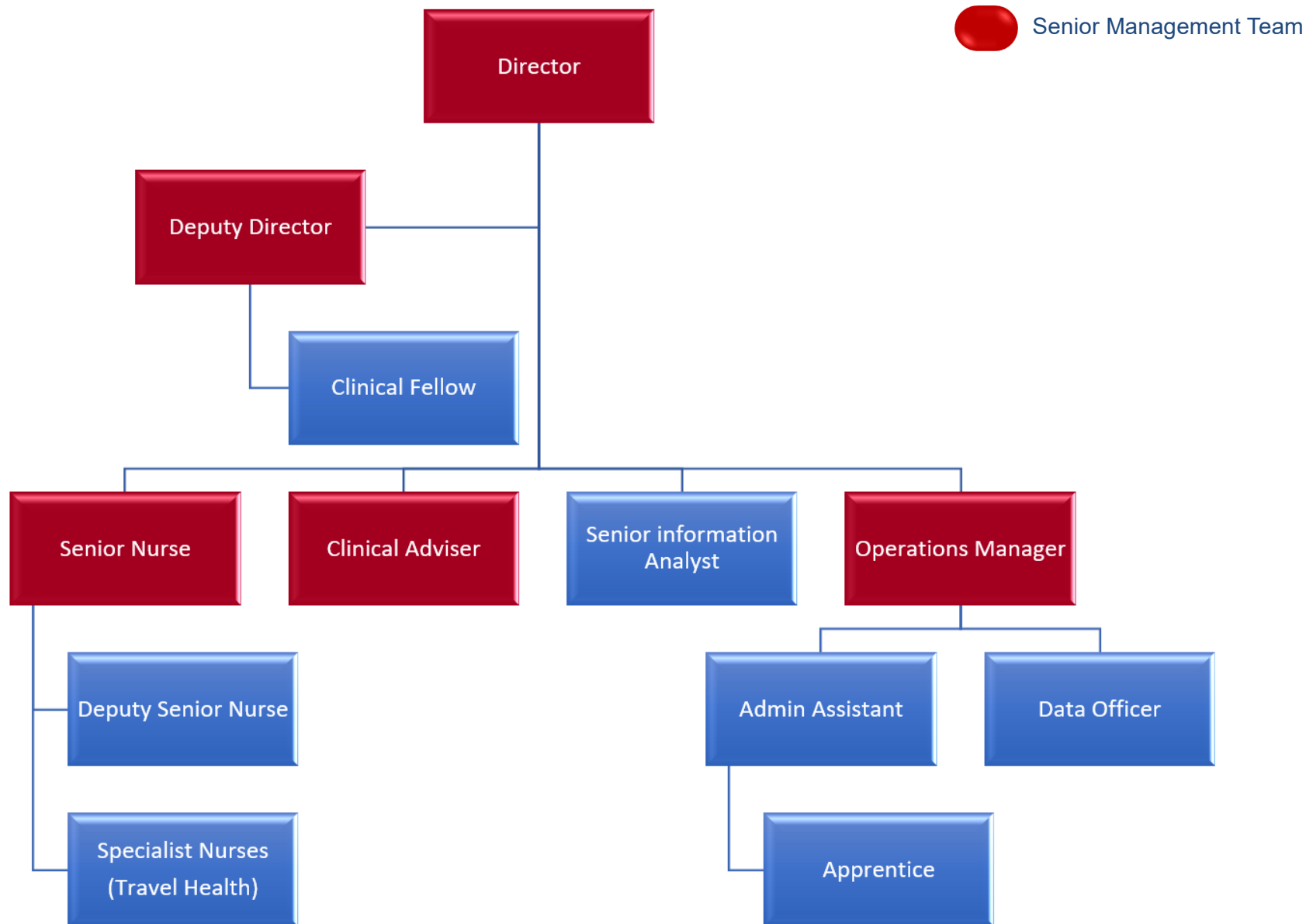
NaTHNaC Team

NaTHNaC's expertise is provided by 18 staff, and has 2 office bases in London and Liverpool. Staff include doctors, nurses, an information analyst and administrators (see organogram on page 6). A business support staff review in 2017, resulted in a consultation at the end of August 2017. This resulted in the loss of the yellow fever programme officer role in January 2018.

Emily Aidoo (EA)	Operations and Project Manager, London (until May 2018)
Lynda Bramham (LB)	Specialist Nurse Adviser, Sheffield
Terence Corrigan (TC)	Online Communications & Development/Data Officer, London
Carolyn Driver (CD)	Specialist Nurse Adviser, Cheshire (until March 2019)
Dr Vanessa Field (VF)	Deputy Director, London
Rachael Fletcher (RF)	Specialist Nurse Adviser, London
Dr Lisa Ford (LF)	Clinical Adviser, Liverpool
Mary Gawthrop (MG)	Specialist Nurse Adviser, London
Zaina Hanif (ZH)	Business Support Apprentice, London (from July 2018)
Sanch Kanagarajah (SK)	Senior Information Analyst, London (from August 2018)
Dr Natasha Kay (NK)	Clinical Fellow, London (maternity until leave August 2018)
Masum Miah (MM)	Service Manager/Operations Manager [†] , London
Linda Pang (LP)	Administrative Assistant, London
Dr Dipti Patel (DP)	Director, London
Dr Jakob Petersen (JP)	Senior Information Analyst, London (until April 2018)
Hilary Simons (HS)	Senior Specialist Nurse, Liverpool
Alexandra Stillwell (AS)	Specialist Nurse Adviser, London
Rose Tucker (RT)	Specialist Nurse Adviser, Derbyshire

[†] Operations Manager from November 2018

NaTHNaC Organogram



FINANCIAL REVIEW

The financial statement covers the period from 1 April 2018 to 31 March 2019.

NaTHNaC receives operating funds from three sources:

1. Public Health England

PHE provides core funding for NaTHNaC on an annual basis, and commissions NaTHNaC to carry out its work, including its programme for Yellow Fever Vaccination Centres (YFVCs). NaTHNaC is hosted by the UCLH NHS Foundation Trust and its headquarters are at 250 Euston Road, London. All monies received from PHE are administered through the Trust, and all London-based NaTHNaC personnel (with the exception of the Directors) are employed by the Trust. The Directors are employees of PHE, and Liverpool staff are employees of Liverpool School of Tropical Medicine.

2. The yellow fever vaccination programme

Income from the yellow fever programme comprises both YFVC registration fees and training fees. Registration fees from YFVCs are assigned to the year of receipt and the subsequent year depending upon the period of registration of the individual centre (YFVCs have the option of registering for one or two years).

Yellow fever training programme fees are targeted to recover costs and may be carried over into subsequent years.

3. Other income

NaTHNaC has additional income streams including provision of data feeds and training (non-yellow fever). These contribute a small amount to the operating budget.

Expenditure is divided between the two sites where NaTHNaC operates: the UCLH NHS Foundation Trust in London and the Liverpool School of Tropical Medicine.

NaTHNaC Financial Report		2018/19	
INCOME		£	£
Annual Funding (PHE)		266,960	
Registration Fees - released & collected		693,862	
Training Fees		254,731	
Other Income		45,928	
TOTAL INCOME			1,261,481
EXPENDITURE			
	Pay	UCLH	394,907
		LSTM	113,761
			508,668
	Training Costs		6,196
	Rent, Rates and Utilities		19,846
	General Expenditure		184,947
			210,989
	TOTAL EXPENDITURE		719,657
	OPERATING PROFIT / LOSS		541,824
	Prior Year PHE Contribution		0
	SURPLUS / (DEFICIT)		541,824
	Surplus Carried forward		(299,295)
	Registration Fees carried forward to future years		(243,429)
	Mat leave income to cover future costs		
	Total Income carried forward		(542,724)

Notes/Assumptions

- *Registration fees carried forward related to cash received for registrations relating to future years*
- *Liverpool School of Tropical Medicine overheads are charged at 25% costs*
- *UCLH overheads are charged at 15% of PHE income plus partial accommodation costs.*

OPERATIONS

This section reviews NaTHNaC's five key service areas, describing how they helped meet our core objectives for 2018 - 2019, and achieve the broad aim of "Protecting the Health of British Travellers".

Key Service Areas

1. Communication and information services
2. International health surveillance
3. Partnerships and collaborations
4. Telephone advice line service
5. Yellow fever vaccination programme

Core Objectives

1. Develop consistent and authoritative national guidance on general health matters for health professionals advising the public travelling abroad, and to disseminate this information widely.
2. Provide guidance on specific situations relating to the health of travellers.
3. Carry out surveillance of infectious and non-infectious hazards abroad, producing accessible regular outputs of such surveillance.
4. Administer Yellow Fever Vaccination Centres (YFVCs) in England, Wales and Northern Ireland (EWNI).
5. Engage the major stakeholders concerned with travel health especially the travel industry, insurance industry and government bodies, to assist in sentinel surveillance and to engage in constructive dialogue towards a unified approach.
6. Facilitate, in collaboration with other training providers, the training of health care and other personnel in the provision of best quality travel health advice, based on such evidence as is available.
7. To define short-term and long-term research priorities in relation to travel medicine.

KEY SERVICE AREA	ORGANISATIONAL ACHIEVEMENTS	CORE OBJECTIVE
Communication and information services	<p>Between April 1st 2018 and March 31st 2019, the total number of page views to the TravelHealthPro website was 10,756,263 (an increase of 35% from 7,977,488 in 2017-18).</p> <p>The top 10 most popular pages remained the same as in previous years and included country information pages for Thailand, India, Mexico, Vietnam, South Africa and Sri Lanka, as well as factsheets on insect and tick bite avoidance, and food and water hygiene.</p> <p>The range of topics covered on TravelHealthPro was expanded to include female genital mutilation, travelling with children , pertussis and travel, and travel with mental health conditions.</p> <p>NaTHNaC's Twitter and Facebook pages continue to attract more followers. By June 2019, NaTHNaC had 3,262 Twitter followers (an increase of 11.8% compared to the previous year) and 1,966 followers on Facebook (an increase of 32% compared to the previous year).</p> <p>NaTHNaC are members of, and contributed to guidance produced by, the travel sub-group of the Joint Committee on Vaccination and Immunisation (JCVI), and Advisory Committee on Malaria Prevention (ACMP)</p>	1,2,3,5,7
International health surveillance	<p>A total of 392 outbreak notices were entered on NaTHNaC's outbreak surveillance database during 2018-19. Of these, 220 (56%) were updates to existing outbreak notices. The most commonly reported diseases were cholera, dengue, Ebola virus disease, Lassa fever, measles and yellow fever.</p> <p>NaTHNaC posted 77 news items which described global health events of importance to British travellers with recommendations as to how to mitigate those risks.</p>	1,2,3,5,7

Partnerships and collaborations	<p>NaTHNaC collaborated with the Public Health Forum of the Royal College of Nursing (RCN) to hold a second study day “The Challenges Ahead”.</p> <p>NaTHNaC continue to work closely with the Foreign and Commonwealth Office (FCO) and Association of British Travel Agents (ABTA), and have also this year partnered with Travel Insurance Explained, and Macmillan Cancer Trust, to improve information to the British travelling public.</p> <p>NaTHNaC currently license data to two commercial organisations.</p>	5,6
Telephone advice line service	<p>From 1 April 2018 to 31 March 2019, NaTHNaC specialist nurses in travel health answered 5234 calls on the national telephone advice line.</p> <p>The electronic data capture system of the advice line calls has been used to analyse real time data on concerns for health professionals advising travellers. This has included a review of calls relating malaria, children under 5 years, older travellers, and clinical incidents involving yellow fever vaccine.</p>	2,6,7
Yellow fever vaccination programme	<p>NaTHNaC works with the Medicines and Healthcare products Regulatory Agency, Public Health England, vaccine manufacturers and distributors to ensure YFVC are kept well informed and supported regarding YF vaccine supplies. NaTHNaC monitors quality standards of YFVC and works closely with the various independent health care regulators in England, Wales and Northern Ireland.</p> <p>In 2018-19, a total of 3,0589 YFVCs were registered in England Wales and Northern Ireland, of which 222 were new centres. There were 236 YFVCs that withdrew their designated status voluntarily, and 35 YFVCs were de-designated by NaTHNaC.</p> <p>Eleven classroom YF training days took place at two locations (Liverpool and London); 6 bespoke sessions were commissioned. In total, classroom YF training days attracted 478 health professionals. During 2018-19, a total of 1,920 health professionals completed the online YF training.</p> <p>There was an 93% response rate from YFVCs to the online Annual Return of YF vaccine use (compared to 86% in 2017).</p>	1,2,4

Team Achievements for 2018 - 2019:

Key:

LB	Lynda Bramham	DP	Dipti Patel
VF	Vanessa Field	JP	Jakob Petersen
RF	Rachael Fletcher	HS	Hilary Simons
LF	Lisa Ford	AS	Alexandra Stillwell
MG	Mary Gawthrop		

A. Honours and Distinctions

Fellow of the International Society of Travel Medicine	VF HS
--	-------

B. Professional Activities

International	
EuroTravNet <i>Board Member</i>	VF
GeoSentinel Tracking and Communications Working Group <i>Chair</i>	VF
International Society of Travel Medicine (ISTM) <i>Member, Continuous Professional Development Committee</i> <i>Member, Publications Committee</i> <i>Co-Director, Professional Education Committee</i> <i>Member, Travel for Work Committee</i> <i>Member, Digital Committee</i>	HS VF DP DP VF DP
8th Northern European Conference on Travel Medicine. <i>Member, Steering Committee</i> <i>Member, Scientific Committee</i>	DP DP HS
Travel Medicine and Infectious Diseases <i>Assistant Editor</i> <i>Editorial Board</i>	DP VF

World Health Organization <i>Roster of Experts in Travel Medicine</i> <i>Guideline development group (GDG) for the revision of WHO International Travel Health</i>	VF DP DP
National	
Department of Health, Joint Committee on Vaccination and Immunisation <i>Observer</i> Travel Subcommittee <i>Member</i> <i>Secretariat</i>	DP VF DP LB
PHE Advisory Committee on Malaria Prevention <i>Member</i>	VF DP
Royal College of Physicians and Surgeons (Glasgow) Faculty of Travel Medicine Executive Board <i>Co-opted Member</i> Academy of Clinical Educators <i>Member</i>	LB AS
Federation of Infection Societies (FIS) Conference 2018 <i>Member, Scientific Committee</i>	DP
Royal College of Nursing Public Health Forum and NaTHNaC Conference 2019 - Travel Health Competence: Pointing you in the right direction <i>Joint Organiser</i>	VF
Society of Occupational Medicine, Travel Medicine Special Interest Group, <i>Chair</i>	DP
Centre for Occupational and Environmental Health, Manchester University <i>Honorary Lecturer</i>	DP
Occupational Medicine <i>Deputy Editor</i>	DP

C. Publications	
Books	
Patel D. International travel. In: Hobson J, Smedley J, editors. Fitness for Work: the Medical Aspects. 6 th Edition. Oxford: OUP; 2019. P 368-380	DP
Journal Articles	
Pshenichnaya N, Petersen E, Patel D et al. Football fever in Russia: Infectious disease risks and the FIFA world cup 2018. Travel Med Infect Dis. 2018 Jul - Aug;24:4-6.	DP
Petersen J, Simons H, Patel D. Amplification of perceived risk among users of a national travel health Web site during the 2013-2016 West African Ebola virus outbreak. Am J Infect Control. 2018 Jul;46(7):843-845.	JP HS DP
Petersen J, Simons H, Ford L, Patel D. Seasonal variation in information seeking on national travel health website. Travel Med Infect Dis. 2019 Jan - Feb;27:128-129.	JP HS LF DP
Javelle E, Florescu SAI, Asgeirsson H, Field V. et al. Increased risk of chikungunya infection in travellers to Thailand during ongoing outbreak in tourist areas: cases imported to Europe and the Middle East, early 2019. Euro Surveill. 2019;24	VF
Petersen J, Freedman J, Ford L et al. Changes to country-specific hepatitis A travel vaccination recommendation for UK travellers in 2017-responding to a vaccine shortage in the national context. Public Health. 2019 Mar;168:150-156	JP LF MG HS DP
Patel D, Simons H. Eds. Travel Health. Public Health (Special Edition) March 2019; 168:148-149. doi.org/10.1016/j.puhe.2019.02.001	DP HS
Other	
Stillwell A. Royal College of Nursing. Competencies: Travel Health Nursing: career and competence development. London. May 2018.	AS
Gawthrop M. Travel health: Prescribing typhoid vaccines. Nurse Prescribing 2018 16:5, 212-216	MG
Simons H. Travellers' Tales: India – Safari. Emporiatrics. Autumn/Winter 2018. Royal College of Physicians and surgeons of Glasgow	HS
Simons H. Travellers' Tales: India – perspectives on getting around. Emporiatrics. Spring/Summer 2018. Royal College of Physicians and surgeons of Glasgow.	HS
Gawthrop M. Yellow fever: Current outbreak in Brazil and cases reported in unvaccinated travellers. Practice Nursing 2018 29:Sup6, S3-S7	MG
Gawthrop M. Managing the immunosuppressed adult traveller. Practice Nursing 2018 29:7, 332-337	MG
Gawthrop M. Updated rabies vaccine recommendations for travellers. Practice Nursing 2018 29:11, 534-537	MG

Gawthrop M. Whooping cough and travel: advising patients on guidelines. <i>Practice Nursing</i> 2018 29:12, 569-572	MG
Chiodini PL, Patel D , Whitty CJM and Lalloo DG. Guidelines for malaria prevention in travellers from the United Kingdom, 2018. London: Public Health England; January 2019	DP

D. Abstracts and Presentations

Petersen J, Simons H, Ford L, Patel D. Seasonal variation in information seeking on national travel health website. Poster presented at NECTM7; May 2018; Stockholm.	JP LF LFDP
Whittington AM, Petersen J, Patel D. Enquiries to a National Travel Advice line regarding travellers with renal disease. Poster presented at NECTM7; May 2018; Stockholm	JP DP
Mirfenderesky M, Petersen J, Patel D. Enquiries to a National Travel Advice line regarding travellers with anatomical and functional asplenia including sickle cell disease. Poster presented at NECTM7; May 2018; Stockholm	JP DP
Petersen J, Ive L, Simons H, Patel D. Pre-travel malaria enquiries to the United Kingdom national travel advice line 2016: Advice mainly needed on malaria maps and risk groups. Oral presentation at NECTM7; May 2018; Stockholm	JP HS DP

E. Lectures

Travel medicine update <i>The Society of Occupational Medicine Scottish Group Spring Meeting, Glasgow April 2018</i>	DP
Workshop on travelling with children <i>NECTM7, Stockholm May 2018</i>	LB
Yellow fever regulations and recommendations <i>NECTM7, Stockholm May 2018</i>	DP
Zika virus update – advising travellers <i>Primary Care and Public Health Conference, Birmingham May 2018</i>	MG
Yellow fever <i>Primary Care and Public Health Conference, Birmingham May 2018</i>	DP
Tetanus and Rabies <i>Diploma in Tropical Nursing, Liverpool School of Tropical Medicine May 2018</i>	HS
Travelling with rheumatic diseases <i>British Rheumatology Society Annual Conference, Liverpool May 2018</i>	LF
The work of the National Travel Health Network and Centre <i>Society for Applied Microbiology Annual Conference, Brighton June 2018</i>	DP
Current measles outbreaks and awareness of measles in migrant travelers <i>HIS trainee conference, Birmingham July 2018</i>	DP

Travel vaccines. <i>Diploma in Mountain Medicine Spring Theory Course, Plas y Brenin May 2018</i>	LB
Work without borders –the interface between travel and occupational <i>Occupational Health 2018, London, June 2018</i>	DP
Assessment of fitness to travel and work abroad <i>Diploma in Occupational Medicine Course, Canterbury Sept 2018</i>	DP
Travel medicine <i>Higher Education Occupational Physicians Conference, Glasgow, Sept 2019</i>	DP
What's new in travel medicine <i>Diploma in Tropical Medicine and Hygiene, London School of Hygiene and Tropical Medicine Sept 2018</i>	DP
Yellow fever <i>Short Course in Travel Medicine. London School of Hygiene and Tropical Medicine Nov 2018</i>	HS
Travel medicine and case studies <i>Diploma of Tropical Medicine and Hygiene, Liverpool School of Tropical Medicine Sept 2018</i>	LF
Information sources in travel medicine <i>Short Course in Travel Medicine, London School of Hygiene and Tropical Medicine, Nov 2018</i>	DP
Medico-legal aspects <i>Short Course in Travel Medicine, London School of Hygiene and Tropical Medicine, Nov 2018</i>	DP
Preparing the overseas worker <i>Short Course in Travel Medicine, London School of Hygiene and Tropical Medicine, Nov 2018</i>	DP
Travel health scenarios <i>Short Course in Travel Medicine, London School of Hygiene and Tropical Medicine Nov 2018</i>	VF
Yellow fever – an update MASTA study day, London Nov 2018	DP
Yellow Fever: Recommendations and Requirements Federation of Infectious Societies Conference, Gateshead Nov 2018	HS
Health Advice. Communicating FCO and Other Travel Advice to Customers. <i>ABTA Conferences, London Nov 2019</i>	VF
What's new in travel medicine <i>Faculty of Travel Medicine and BGTHA joint event, Leicester Nov 2018</i>	DP
Tetanus and Rabies. <i>Diploma in Tropical Nursing, Liverpool School of Tropical Medicine Dec 2018</i>	HS

Gone viral: non-vaccine preventable vector-borne diseases. <i>RCN and NaTHNaC Joint Conference Feb 2019</i>	LB
Challenging travellers: rabies <i>RCN and NaTHNaC Joint Conference Feb 2019</i>	HS
Challenging travellers: immunosuppression <i>RCN and NaTHNaC Joint Conference Feb 2019</i>	LF
The challenges ahead: Horizon 2019. <i>RCN and NaTHNaC Joint Conference Feb 2019</i>	DP
Health Advice. Communicating FCO and Other Travel Advice to Customers. <i>ABTA Conferences. London, March 2019</i>	VF
Measles and travel <i>Health and Wellbeing at Work, Birmingham March 2019</i>	DP
Malaria – latest news. Health Surveillance and Worker Protection <i>Health and Wellbeing at Work, Birmingham March 2019</i>	HS
Topical vaccine questions to the National Travel Health Network and Centre. <i>Oxford vaccine Group, Oxford March 2019</i>	DP

F. Education and Training

London School of Hygiene and Tropical Medicine <i>Lecturer, Diploma in Tropical Medicine and Hygiene</i> <i>Lecturers, Short Course in Travel Medicine</i>	DP VF DP HS
Liverpool School of Tropical Medicine <i>Lecturer, Diploma in Tropical Nursing</i> <i>Lecturer, Diploma in Tropical Medicine and Hygiene</i> <i>Lecturers, Diploma in Travel Health</i>	HS LF LB LF DP HS
Manchester University <i>Lecturer, Tutor, and Supervisor, MSc Occupational and Environmental Medicine</i>	DP
Royal Society of Tropical Medicine & Hygiene and Kent Institute of Medical Science <i>Lecturer, Diploma in Occupational Medicine</i>	DP
British Mountain Medicine Society <i>Lecturer, Diploma Mountain Medicine</i>	LB

<p>NaTHNaC</p> <p><i>Trainers, Yellow Fever Vaccination Centre Training Seminars, England, Wales and Northern Ireland</i></p> <p>Webinar series</p>	<p>LB MG RF AS HS</p> <p>LF HS</p>
---	--

NaTHNaC thanks our partner organisations for their support, expertise and commitment to 'Protecting the Health of British Travellers'

Department of Health and Social Care

www.gov.uk/government/organisations/department-of-health-and-social-care

Liverpool School of Tropical Medicine

www.lstmed.ac.uk

London School of Hygiene and Tropical Medicine

www.lshtm.ac.uk

Public Health England

www.gov.uk/government/organisations/public-health-england

The Hospital for Tropical Diseases

www.thehtd.org

University College London Hospital NHS Foundation Trust

www.uclh.nhs.uk

National Travel Health Network and Centre (NaTHNaC)

UCLH NHS Foundation Trust

3rd Floor Central

250 Euston Road

London NW1 2PG <https://nathnac.net/>



*NaTHNaC – Leading the Way in
Travel Health*