

International Schools Guide





Happy Dream Holiday



WORLD DREAM



Amazing LIVE entertainment

Family dream vacation

International gourmet cuisine

Egg-cellent Fun only @ Sea "Gashapon" fun (10 March - 14 June)

International School Fair Special Offer

Enjoy Cabin Fare 50% OFF for May – June 2019 selected sailings*

5-night Dream Discovery

Naha • Miyakojima
2, 9, 16 & 23 June
Hong Kong departure

Balcony Stateroom

Original Price from HK\$7,849 per person
Now from HK\$**3,925** per person
(Double occupancy)



2-night Weekend Getaway

31 May & 14, 21 June
Hong Kong departure

Balcony Stateroom

Original Price from HK\$3,475 per person
Now from HK\$**1,738** per person
(Double occupancy)



Quote with identification code
ISF2019
Call us now or before 4 April 2019

Enquiries and reservation
2317 7711

Suite 1528, Ocean Centre,
5 Canton Road, Tsimshatsui,
Kowloon, Hong Kong S.A.R.

Grooming future leaders of a globalized world



As the world becomes increasingly globalized, its citizens will also need to broaden their perspective and knowledge, be able to interact effectively with people of different backgrounds, and be creative and independent problem solvers.

The growing popularity of international schools is a direct result of parents' general dissatisfaction with the mainstream education system which has not kept abreast of global megatrends. The traditional predominance of rote learning over reasoning and imagination, and the misplaced emphasis on examination results have combined to create a steady exodus of students to other trail-blazing schools that offer a more liberal education.

Many students in the mainstream education system dread school because of the totally unjustifiable load of homework that they must finish every night, robbing them of time to develop their interests outside text books, and the precious opportunities of bonding with parents and siblings.

Term breaks and vacations do not bring relief as assignments would multiply from each and every subject teacher.

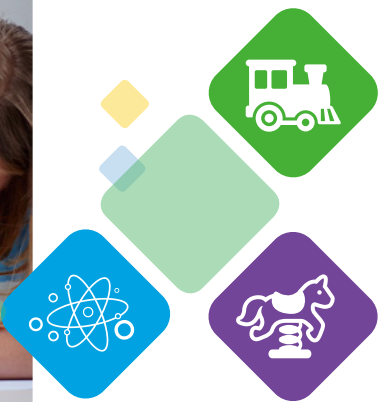
International schools offer a welcome alternative, and are increasingly held in high regard by parents because of their innovative curriculum and well-researched teaching methodology. While traditional schools focus on dishing out information en masse in order to complete a demanding syllabus, international schools encourage and support students to seek the knowledge and answers for themselves.

The holistic education is effective in nurturing children to become intelligent, all-rounded whole persons who can realize their full potentials. Furthermore, their students are better prepared to pursue education overseas due to their language proficiency, confidence and independent qualities.



Features Editor

Terms and Conditions: 5-Night cruise will call at Guangzhou (Nansha) for transit. All Hong Kong and Macau passengers must bring their Home Visit Permit. *Special offer is applicable to Balcony Deluxe Stateroom or below (ISS-BDS) on specific departures only and cannot be used in conjunction with any other promotional offers. Cruise fares shown are per person based on double sharing in an Balcony Stateroom (BSS/BSA) and calculated in HKD. Price excludes gratuities, shore excursion, travel insurances, transportation, visa charges and other incidental charges. Booking is subject to availability by first-come-first-served basis. Dream Cruises reserves the right to amend these Terms and Conditions as well as to vary or terminate any of the offers without prior notice. All information for reference only and subject upon booking. For more details, please refer to Terms and Conditions of the Guest Ticket Contract ("the Passage Contract"). Promotion fare is not applicable to group tour. Photos are for reference only. Activities to be arranged in accordance with the prevailing condition and subject to change without prior notice. In the event of disputes, decision of Dream Cruises shall be final and binding. (HKGWD19001)



01	Editor's Message	20	Unique International MUSIC and STEAM Kindergarten
04	Play is essential for living and learning	22	Reggio Emilia and Inquiry Based Learning
06	A world-class, immersive educational experience	24	Cultivate global leaders of tomorrow
08	Primary Education without Compromise	26	A creative and immersive learning experience
10	Cultivating curious students with the passion to learn	28	DE LA MANO SPANISH Learning Spanish hand in hand
12	See what learning can be at HKA	30	Grooming bilingual world citizens of tomorrow
14	Setting up students for success	32	ESF – inspiring the global leaders of tomorrow
16	Embedding joyful and lasting memories in every student's heart	34	Empowering students to pursue their pathways
18	EDUCATION FOR LIFE	36	Directory

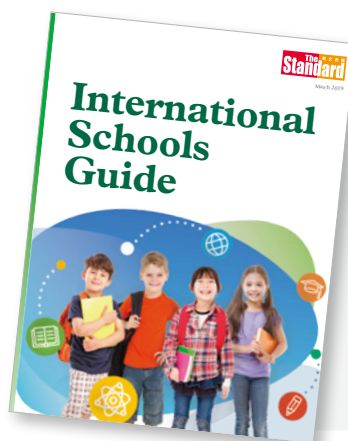


Global Education

YCIS prepares students to face the challenges of the unknown future and equips them to embrace the world with confidence.

To learn more, contact us now to book your private tour or register for an upcoming information session.

Tel: 2338 7106 | admissions@ycef.com | www.visit-ycis.com



"International Schools Guide" is published by The Standard in March 2019

Display Advertising Department
3/F, Sing Tao News Corporation Building,
7 Chun Cheong Street,
Tseung Kwan O Industrial Estate,
Tseung Kwan O, New Territories, Hong Kong

Advertising Hotline: (852) 3181 3311
Fax: 2758 3579

All rights reserved.



Features Editor: Andy Ng
Reporters: Bryan Wong
Christie Cheung
Designer: Xavi Poon
Business Director: Irene Chan
Website: www.thestandard.com.hk
Email: advertise@thestandard.com.hk

► Why choose YCIS?

- ✓ Strong bilingual focus*
- ✓ International curriculum*
- ✓ Multicultural environment*
- ✓ Ages 6 months to 18 years*
- ✓ 100% university acceptance*
- ✓ Up to 7 years of Secondary scholarships*



Committed to **Global Education**



PLAY IS ESSENTIAL FOR LIVING AND LEARNING

Written by Kate McAlister, Western Co-Principal, Early Childhood Education (ECE) Section of Yew Chung International School (YCIS)

The big debate in early childhood education today is the ‘push down’ of academics, robbing children of play. Many professionals are concerned about what this means for young children, and for the future of society as children grow up without the vital learning self-initiated play provides them.

In Hong Kong, there can be a tendency to over-fill young children’s schedules with formal, planned lessons to provide children with more learning. However, professionals, such as Peter Gray, suggest we must do the opposite. Supporting and encouraging children’s inborn drive to play and explore gives them the most valuable skills in living and learning. In *“Give Childhood Back to Children”*, Gray states, “If we want our offspring to have happy, productive and moral lives, we must allow more time for play, not less.”

Play is defined as voluntary, self-motivated, and engaging. All forms

of learning, including physical, social, emotional and cognitive development, are rooted in play. The fundamentals of learning are formed, as children are able to follow their curiosities with natural problems and new ideas unfolding in front of them. Through play children learn crucial lessons, such as the cycle of practice, fail, try again; building in them persistence and resilience. Play provides children with opportunities to build their confidence and creativity as they become risk takers and problem solvers. In this ever-changing world, these skills cannot be learned by memorized answer, but are truly fostered through allowing children to test and try new experiences and ideas. They are consistently strengthening their cognitive thinking as they actively take part in their learning. These are valued skills and even today’s workplaces are not seeing enough self-initiation, critical analyzing or creativity.

Social and emotional skills are also embedded in play. Social skills, with their cues and rules, are explored and experimented with as they engage with peers and explore cooperation.

They investigate their relationships and emotions, giving them time and exposure to develop understanding of social behaviours and norms, as well as insight into their own emotional responses. In imaginary play, they are free to experiment with familiar and unfamiliar characters’ roles. They gain empathy as they explore others’ perspectives. They grow a strong sense of self and belonging as they role play, experimenting with all the knowledge they are gaining socially in their daily lives. They are able to experiment with the unknown, learning to control and understand their impulses and fears.

At Yew Chung International School (YCIS) Early Childhood Education (ECE) Section, through play, character development is also supported, validated and encouraged. Individual children are valued for their strengths and differences. Too often as adults we forget about the importance of the formation of personality within a child and how it needs to be gently nurtured. When adults provide time for play, they show children that they respect and trust in their natural and authentic desire to learn and question

their world. Within play, children have the opportunity to develop positive and secure dispositions, allowing stable character formation and unique personality traits. They gain strong self-identity, which carries on with them throughout life. Children may be “small” but by no means should they ever be made to feel insignificant.

In YCIS early childhood education programmes, all these skills are highly valued through their play-based curriculum. The curriculum is led by the children’s interests, explorations and discoveries. Throughout the classroom, children are researchers engaged in different types of experience, from individual children investigations to small group explorations. Teachers are actively engaged with children, as well as closely observing the various learning on-going of all students. Teachers then creatively extend that learning with further investigations, relevant conversations, and thoughtful settings to deepen children’s play. Teachers respect children’s view, feelings and knowledge. The uninterrupted play is relished by the learners, as they enthusiastically throw themselves into every moment of the school day.



Yew Chung International School (YCIS)

Tel: 2338 7106
 Email: admissions@ycef.com
 Website: www.ycis-hk.com

YCIS Early Childhood Education Section plans to open a new campus in Tseung Kwan O in 2019-20. Contact us to learn more.





A world-class, immersive educational experience

Providing a seamless transition from Early Years all the way through to College, Mount Kelly School Hong Kong is dedicated to ensuring students are well-prepared for school and beyond.

With a through-school system that allows for students to graduate from Mount Kelly Babies and Toddlers (playgroup) to the International Preschool (Kindergarten), then onwards to the Preparatory School, Mount Kelly offers a learning environment which prepares students for their senior years in College in Hong Kong or in the United Kingdom.

Delivered by experienced educators from the UK, the curriculum at Mount Kelly adopts the best in contemporary educational practices, as well as offering quality opportunities for students to develop their interests.

Committed to the practice of an immersive learning environment, Mount Kelly School Hong Kong incorporates the Chinese language as an integral part of a student's overall knowledge. The school also understands the skills students need for 21st century learning and incorporates coding, robotics and programming into the curriculum.

The school offers an extra-curricular programme including a range of sports, music and performing arts,

as well as language learning and mindfulness. These take place as a continuation of the school day, from 3.45pm to 4.30pm, once students have finished their timetabled lessons.

In addition, Mount Kelly School Hong Kong offers a range of overseas learning opportunities for students during the academic year. This includes the opportunity to visit Mount Kelly UK, in which students enjoy a sight-seeing day in London before heading to the beautiful countryside in Tavistock, Devon where they join their Mount Kelly UK peers. Students stay at the Boarding House and participate in daily lessons at the UK campus, as well as join the Shackleton programme – designed to develop and celebrate leadership qualities and teamwork.

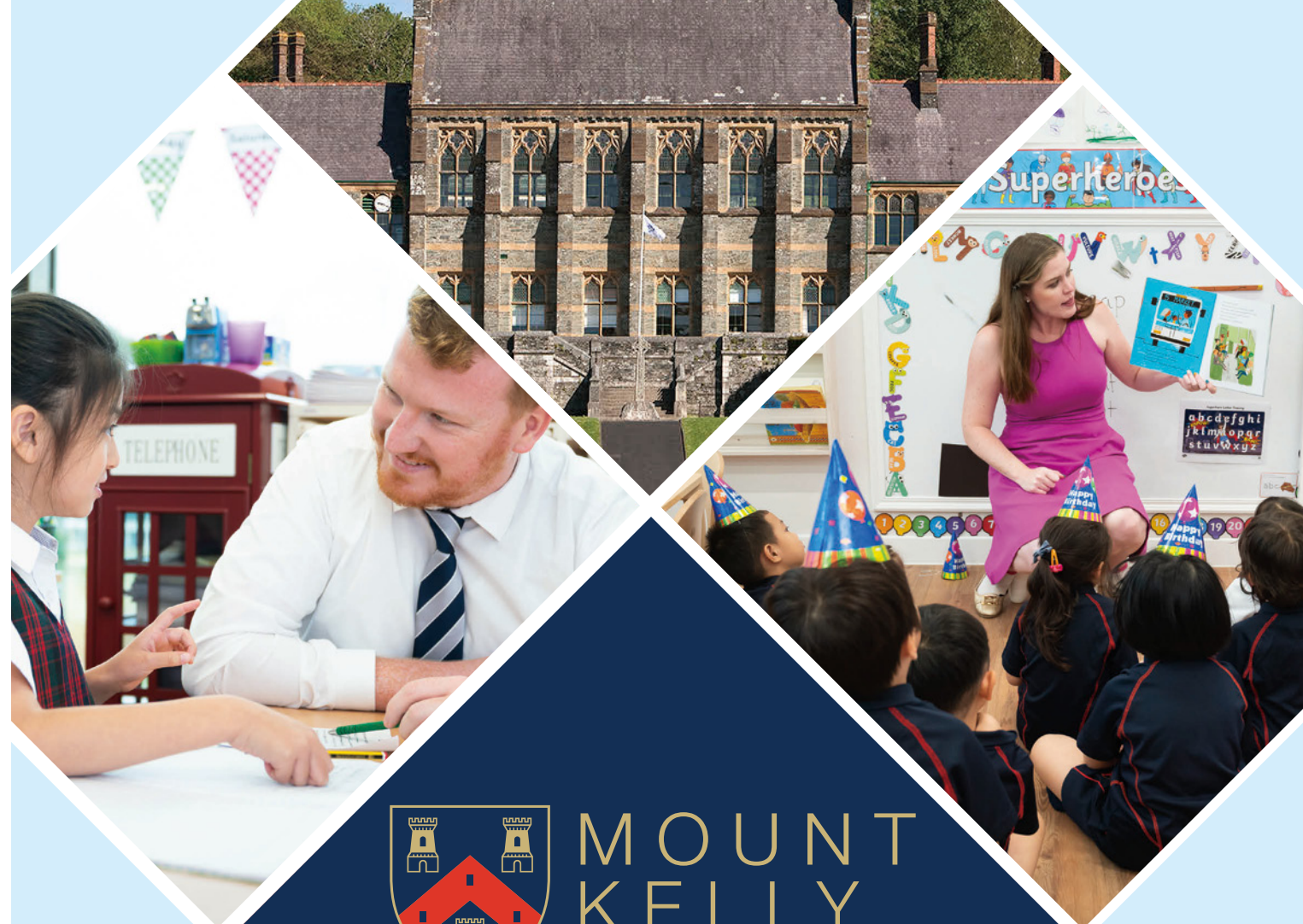
Furthermore, students at Mount Kelly School Hong Kong will be guaranteed admission to the UK campus, should they want to pursue their studies overseas. Alternatively, students who wish to transition to a different College after Preparatory at Mount Kelly will also find themselves fully prepared for the Common Entrance exams and any Scholarship requirements in order to gain entry to many top ranking UK senior schools. Both streams of students can rest assured that the quality education they have received from Mount Kelly will lead to excellent university placements at home and overseas.

Mount Kelly School - School office
(Admissions Department)

Upper G/F, Austin Tower, 152 Austin Road, Tsim Sha Tsui, Kowloon, Hong Kong

Tel: 2157 9557

Email: admissions@mountkelly.edu.hk



MOUNT KELLY HONG KONG



Mount Kelly International Preschool EDB Registration Number: 608092
Mount Kelly School Hong Kong EDB Registration Number: 609781

BOOK A TOUR TODAY

Applications open for 2019/20, learn more at www.mountkelly.edu.hk

Enquiries: +852 2157 9557 | admissions@mountkelly.edu.hk

A Seamless Transition in British Education

Primary Education without Compromise

With almost 500 years of heritage, Shrewsbury International School Hong Kong offers a long standing tradition of education excellence and exceptional learning experiences with a world class facility in Tseung Kwan O.



Unique and tailored education for students

Shrewsbury International School Hong Kong is a specialist primary school centred around traditional British values and an innovative approach to teaching and learning. It opened in August 2018 and offers a wide range of provision for children aged between three and eleven, predominantly from an international background. The newest member of the Shrewsbury family, the school builds upon the reputation of its sister school, which was founded by Royal Charter in 1552 as one of Britain's best reputed schools.

Offering balance and breadth, staff at Shrewsbury International School Hong Kong are committed to ensuring that every child is happy, motivated and ready to achieve. A range of specialist facilities designed exclusively for the use of primary aged children ensure that the school is able to engage and inspire. Its proud and committed community are passionate about delivering a legacy in tune with the great successes of their past.



Remarkable benefits of the English National Curriculum

Young children learn best when they are engaged and enthralled. Shrewsbury delivers a topic-based curriculum to immerse students fully within a rich and enveloping series of lessons, considerably designed to best embed key learning concepts. The school's close connection with the English National Curriculum provides a rigorous structure upon which student performance can be accurately gauged, allowing for helpful school performance comparisons, and improving consistency when reporting to parents.

Shrewsbury welcomes children into a community that pursues both academic success and personal development. Students are given outstanding opportunities to shine in class and beyond. Classrooms and communal areas have been designed to foster partnership and participation, allowing every child to experience and benefit from a unique blend of traditional education values and innovative teaching methodology.

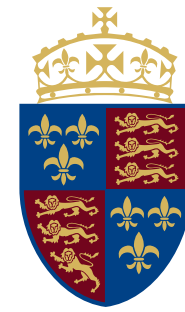
Students are encouraged to explore the ideas, principles and beliefs of others, while developing a refined understanding of their own strengths. With an understanding that children learn as much from one another as they do from their teachers, the provision at Shrewsbury is driven by the benefits of collaboration, fostering academic excellence within a nurturing and stimulating environment and bringing out the best in every child.

Seamless and personalised transition

Staff at Shrewsbury understand that every child is unique and this purposeful clarity has inspired a truly bespoke programme of student transition. Working closely with families, the team help to identify and shape the emerging strengths and ambitions of each student during their primary years. Drawing upon the practice of its sister school in the UK, Shrewsbury will offer a personalised programme of transition that begins with family meetings during the course of Year 4. Gathering together crucial thoughts and ideas at this early stage allows parents to make a careful selection and a considered application. The individual characteristics of each child and the personal circumstances of each family are also be considered to ensure the best possible match. Shrewsbury's detailed knowledge of schools both within Hong Kong and beyond will provide the context required for parents to make an informed decision.

Shrewsbury International School Hong Kong

10 Shek Kok Road, Tseung Kwan O
Tel: 2480 1500 **Fax:** 2480 1231
Website: www.shrewsbury.hk
Email: sarah.b@shrewsbury.hk



SHREWSBURY INTERNATIONAL SCHOOL

HONG KONG



Primary Education without compromise

Find out how our personalised learning pathway establishes the foundations for successful lifelong learning

We are now open for applications for aged 3-11. Limited places available.

TALK & TOUR

Book your visit today

<http://bit.ly/SHKtalktour>

- Thematic British Curriculum
- 465 years of Shrewsbury Heritage
- Integrated Chinese language programme
- Purpose built primary school
- Primary teaching specialists
- Personalised learning journey

CONTACT US:

2480 1500

@ sarah.b@shrewsbury.hk

10 Shek Kok Road, Tseung Kwan O
www.shrewsbury.hk

Studying the IB at The ISF Academy

忠 孝 仁 愛 禮 義 和 平 智



Cultivating curious students with the passion to learn

The Independent Schools Foundation Academy (The ISF Academy) is a non-profit private independent primary and secondary school providing a unique inquiry-based Putonghua and English bilingual immersion education. We are a Chinese school with a global perspective.

We believe that learning is the active construction of knowledge best experienced through meaningful activities that foster exploration

and creativity. An ISF education emphasizes probing discussions, passionate debates, and critical thinking. As cheerful high achievers, ISF learners exude a joy of learning that drives the development of culturally agile and confident communicators who possess the social, creative, analytical thinking skills necessary to succeed and thrive in a complex world.

We are a strong proponent of learning by doing. Our hallmark

Experiential Learning Program features unfamiliar settings and novel challenges that build character and confidence. An ISF learner is at home building dormitories in Laos, researching ancient texts in Cambridge, or exploring the rich history of the Silk Road.

We are an accredited International Baccalaureate (IB) World school. Our Diploma results place us in the top tier of Hong Kong IB schools; and more than two thirds of our graduates achieve the coveted Bilingual Diploma, twice the global average. Our graduates receive offers from the world's most prestigious universities.



To submit an application or register for a visit, please go to Friends of The ISF at admissions.isf.edu.hk.



Personalized University Counseling

Our systematic and personalized university guidance and careers program spans from Grade 9 to 12 and allows our students to make informed decisions for their DP subject choices and subsequent university applications.

Small Class Size

ISF Academy students benefit from small class sizes which range from 5 to 16 students per class. The overall student teacher ratio for all grades is 6:1.

Bilingual Diploma and Bilingual Theory of Knowledge

We offer both English and Chinese as first language options (Group 1). Students also receive Theory of Knowledge instruction in both English and Chinese, and may choose either language for their written paper.

University offers received in the last three years include:

- Canada:** McGill University, The University of British Columbia, University of Toronto
- Hong Kong:** Hong Kong University of Science and Technology, The Chinese University of Hong Kong, The University of Hong Kong,
- U.K.:** Durham University, Imperial College London, London School of Economics and Political Science, University of Cambridge, University of Oxford, University of St Andrews
- U.S.A.:** Brown University, Cornell University, Princeton University, Stanford University, University of California, Berkeley, University of California, Los Angeles, University of Pennsylvania



弘立書院
THE ISF ACADEMY

Independent

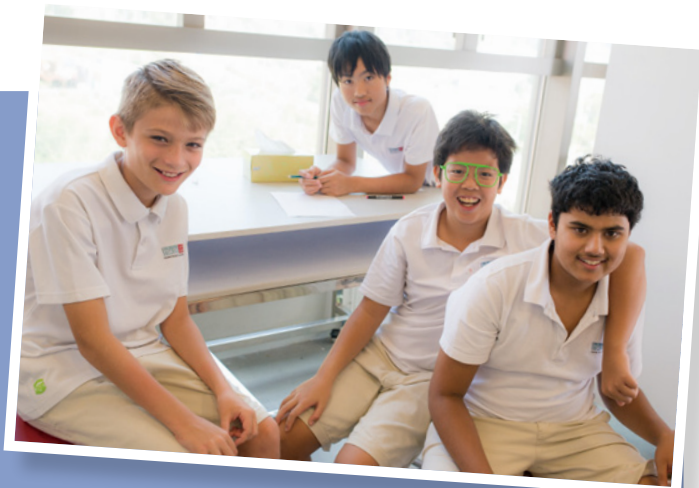
Chinese

Global

The Admissions Office

Tel: 2202 2028 | Email: admissions@isf.edu.hk
Address: 1 Kong Sin Wan Road, Pokfulam, Hong Kong
Website: academy.isf.edu.hk





See what learning can be at HKA

HKA is an inclusive non-profit IB World School for 3 - 18 year olds that supports students' pathways to individual excellence, celebrates diversity, nurtures wellbeing and embraces inclusion.

HKA was founded by two parents with a vision for inclusive, international education and a belief that learning is an exciting endeavour where rigorous engagement is fun. With small class sizes and low student to teacher ratios, the faculty get to know students as individuals and help them discover their own joy as lifelong learners. HKA challenges students to stretch beyond their comfort zones and apply their knowledge in ways that they find both personally and globally relevant.

As an educational leader, they empower learners to pursue pathways to individual excellence by fostering creativity, communication and problem-solving skills. HKA learners develop an evolving understanding of our changing world, leading them to engage in responsible action motivated by their interests, strengths and ongoing reflection. Students of every age are engaged, active inquirers who fully embrace learning in all its forms.

HKA is a non-profit, community school with a Board of Trustees comprised of parents and former parents who generously volunteer their time. Their parents also contribute many hours to enrich school life. Whether it be in the classrooms, the libraries, the theatre or the sports fields, there is always a

way to get involved. With a dynamic learning community and weekly on-campus professional development opportunities the faculty are also well supported in expanding their knowledge. At HKA parents are learners too and often attend workshops and learning events led by faculty and guest speakers.

Inclusion is HKA's byword with their students, faculty and parents quick to welcome you! They believe that diversity, grounded in mutual respect, enhances learning for all. It is a truly international school where no single nationality is a majority with a curriculum that is globally-sourced. Their commitment to inclusion is evident in their classrooms where all students are supported to enable them to follow their own pathways to individual excellence.

This commitment includes students who need extra support and those who benefit from enhanced learning opportunities. In keeping with current research, HKA seeks to enrol a student body where 15% of their students take part in their Learner Support programme.

HKA invites you to learn more about their programmes and offerings. Get in touch with their admissions team and see what learning can be!

Hong Kong Academy

Hong Kong Academy, 33 Wai Man Road, Sai Kung New Territories, Hong Kong

Tel: 2655 1118

Email: admissions@hkacademy.edu.hk



"A great book should have two things: a character you can associate with so you can learn more about yourself and others around you, and unexpected moments because that's what real life is like."

*Sofia,
Grade 6 Student*

Do What You Love

HKA is a non-profit IB World School offering an exceptional inquiry based education for all students ages 3-18. We invite you to take a tour of our campus located in the beautiful seaside village of Sai Kung. Contact our Admissions Team at admissions@hkacademy.edu.hk to arrange a personal visit!

Learn more about becoming a part of the HKA community at hkacademy.edu.hk/admissions

Come for a visit and see what learning can be!





Setting up students for success

Positioned at the forefront of education, American School Hong Kong (ASHK) designs holistic programs that empower students to be independent critical thinkers and responsible global citizens.

The rigorous American and international education programs offered by ASHK, including a STEAM focus and concept-based approach to teaching and learning, equips students with the skills necessary to become self-actualized, critical-thinking, and problem solvers.

ASHK's curriculum focuses on academic excellence and is solidly embedded with international standards. Aligned to the US Common Core, and the International Baccalaureate (IB) Diploma Program, the curriculum includes Columbia University's Teachers College Units of Study (reading and writing) as part of a balanced literacy program. Eureka Math, TCI Science and Social Studies, as well as other world-renowned resources support a holistic learning experience for all students.

ASHK Middle School

The Middle School (grades 6 - 8) provides a transitional bridge between the more child-centered Elementary School and the curriculum-based High School. Healthy relationships are of

paramount importance when working with 10-14 year olds where the widest range of physical, social, and intellectual growth differences exists. ASHK middle school teachers have a strong understanding of adolescent development and through programs such as TAP (Teacher Advisor Program) are able to meet individual needs.

In addition, specially designed leadership development programs such as Model United Nations, Week Without Walls, and National History Day, provide students with the opportunity to acquire and develop global citizenship skills.

Building on the academic foundation introduced in the Elementary school, the Middle School also uses the US Common Core (Math and English), Next Generation Science Standards (NGSS), and American Education Reaches Out (AERO) Social Studies standards to provide the framework for learning.

ASHK High School

Enrollment in the International Baccalaureate (IB) program is the preferred option for High School students with a pre-IB program in grades 9 & 10 and the full diploma program in grades 11 & 12. The IB Diploma is a college

preparatory program characterized by its intellectual rigor, liberal arts tradition, and international flavor. The curriculum promotes critical and analytical thinking. The IB Diploma is recognized as an excellent credential or 'gold standard' passport for admission into top tier colleges or universities in English-speaking countries worldwide.

With the flexible and personalized high school program, students can choose between completing a US High School Diploma, the full IB Diploma, or a US High School Diploma which includes some IB classes.

Students will engage in group projects requiring analytical thinking, extensive research and collaboration, whilst continuing to develop their learning through the STEAM approach.

ASHK will provide college counseling and career guidance for students, including support and assistance for students that choose to write the SAT's. Opportunities to interact with representatives from top US and Canadian universities will also be provided to students.

American School Hong Kong

6 Ma Chung Road, Tai Po,
New Territories, Hong Kong

Tel: 3919 4111

Email: admissions@ashk.edu.hk

Webiste: www.ashk.edu.hk



Photo credit: Esol Education's American School Hong Kong

MAKING A WORLD OF DIFFERENCE

World-class American School in Hong Kong

American School Hong Kong (ASHK) is a KG to Grade 12 non-profit, college preparatory school offering a holistic American and international education taught by qualified North American teachers who inspire, motivate and challenge students to achieve excellence.

ASHK is operated by **Esol Education, the world's largest operator of international American schools**, with 40 years of experience in establishing and operating high standard International schools worldwide. Currently, more than 10,000 students attend Esol's nine schools across three continents. Graduates from the Esol Education schools are now attending leading universities, including Stanford, MIT, Yale, Columbia and the London School of Economics.

Now accepting applications for KG to Grade 9 (ages 5-14). Join our Open House to discover the ASHK difference. Limited seating, please register early at www.ashk.edu.hk.

ASHK features include:



Standards-based
US Curriculum



for 21st Century Learning



IB
Diploma



Stanford | Pre-Collegiate
International Institutes

Stanford Summer Program



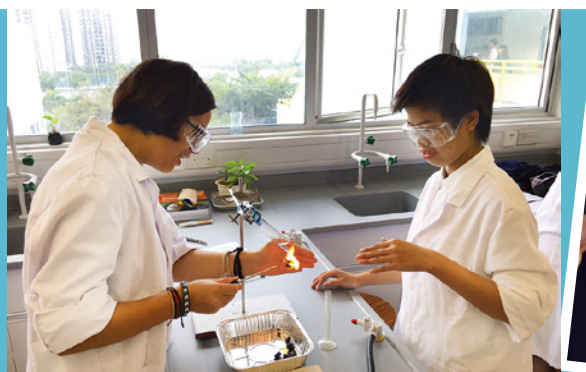
Chinese Program
with Multiple Streams



DIVERSITY | TEAMWORK | EXCEL

KOREAN INTERNATIONAL SCHOOL

55 Lei King Rd, Sai Wan Ho, Hong Kong - Tel: +852 2569 5500 - WWW.KIS.EDU.HK



Embedding joyful and lasting memories in every student's heart

Message from the Principal

KIS is a school filled with smiles and laughter. "I want to make our school an 'oasis in the heart of Hong Kong' that when you walk in you feel that this is a place where everyone cares," says Mr C.Chadwick, Principal.

'I believe that if my students are happy they will want to learn and want to come to school. How will I encourage this? Well, they will be engaged through challenging and interesting teaching. The students will follow a well -structured UK curriculum which the teachers and I will monitor. The curriculum we follow is distinctive and customized for all of our children's needs, carried out by a team of top-quality professionals from around the world who have chosen to devote their lives to teaching young people how to think and learn.

School History and Curriculum

Korean International School (KIS) started out in 1988. It started its first class in 1994 and today KIS runs two separate curricula, the Korean Section and International Section. The Korean section teaches in Korean, while the international section teaches in English.

At the primary level of the International Section, the core subjects of the curriculum, i.e. Mathematics, Sciences and English, are designed in accordance with the Cambridge International Examinations (CIE), while other subjects are based on the broad curricular outline of

the National Curriculum for England. Students have to complete the Cambridge Primary Checkpoint external examinations in the core subjects at the end of Year 6. Chinese, Spanish and Korean classes are offered as elective subjects. At the secondary level, students continue to take the core subjects plus Art, PE, Information Computer Technology, Korean/Mandarin, and Music, from Year 7 to 9 following the Cambridge Lower Secondary Programme (CLSP). At the end of Year 9, students will complete the Cambridge Checkpoint external examinations in the core subjects. Years 10 and 11 follow a programme of studies leading to the group award of the International General Certificate of Secondary Education (IGCSE), an international certificate based on a syllabus and examinations developed by Cambridge for students in countries outside of England. In Years 12 & 13, students follow the Cambridge International AS and A2 Level Courses. Year 12 students should complete up to four subjects at the Cambridge International AS Level and select three of the subjects in Year 13 to complete the Cambridge International A2 Level.

A unique feature of KIS is its special unit provision called Springboard. Springboard is a special unit which caters to children and young adults with Special Educational Needs. KIS supports students with a wide range of learning difficulties, constantly striving to empower Springboard students to maximize

their potential and where possible, transition into mainstream education for some lessons. All Springboard students have an Individual Education Plan which caters to each student's needs.

Facilities

The Korean International School is known for its world class facilities. The school embeds technology into its learning using iPads, Crome books, computers and introducing Virtual Reality into its curriculum. The school sport facilities include a 25 meter swimming pool, 2 football pitches, basketball court, tennis court, and sprint track. KIS also has two laboratories, media studies studio, a Music Room, two art studios, Canteen, Technology center and a brand new state of the art library.



Korean International School

55 Lei King Road, Sai Wan Ho, Hong Kong
Tel: 2569 5500 | Fax: 2886 2545
International Section: kisints@kis.edu.hk
Korean Section: kiskors@kis.edu.hk



Applications Now Open!





EDUCATION FOR LIFE

Through character formation, virtue appreciation, and knowledge acquisition

For over 25 years, Christian Alliance International School (CAIS) has focused on its explicit mission: To cultivate learners with knowledge, skills, integrity and discernment; growing in love for God; and service to humanity. Embedded in this mission are three core values: (1) to love God wholeheartedly; (2) to learn diligently; and (3) to serve selflessly. This has been the school's distinctive mark as it continues to expand into its new campus.

The philosophy of Christian education begins with the fundamental belief that every learner is special, unique and valuable. Therefore, CAIS encourages learners to develop their God-given talents and establish the relationship with God, in order to produce quality academic work while maintaining high standards of conduct.

CAIS believes that Christian education is life-transforming and it prepares learners for a purposeful and fulfilling life. It goes beyond dispensing information and imparting knowledge; Christian education highlights the importance of wisdom, which allows learners to see their situation in a broader context, and assign proper weight to things. When students are confronted with an issue, they have mental heuristics informed through biblical imperatives that enable them to arrive at sound judgments.

A unique distinction of Christian education is that parents have the ultimate responsibilities to educate their children (Deuteronomy 6:7). Hence, the school partners with parents in nurturing, developing and shaping godly character and spiritual values of the young learners. Values that are taught at CAIS will be further reinforced at home, so that learners will be equipped with appropriate socialization skills to function in society.

As a community, not only do CAIS learners explore the Christian way of understanding, but also the Christian way of living. Characterized by the love of Christ, CAIS is a caring, safe, respectful and welcoming community, where members understand differences, celebrate diversity and use their gifts to serve one another. The school is, in essence, a Christ-centered, learner-focused, and others-oriented learning community.



Christian Alliance International School

33 King Lam Street, Lai Chi Kok, Kowloon

Tel: 3699 3899

Email: info@caisbv.edu.hk

Website: www.caisbv.edu.hk



蝴蝶展翅 蛻變成才

A TRANSFORMATIVE EDUCATION EXPERIENCE

The CAIS academic culture is rigorous, enthusiastic and distinctively Christian. We offer Advanced Placement® courses complement the world class Alberta Curriculum.



CHRISTIAN ALLIANCE INTERNATIONAL SCHOOL
宣道國際學校



(852) 3699 3862 · 3699 3859
admissions@caisbv.edu.hk
www.caisbv.edu.hk
CAIS.HK



Parents are the only ones who can choose the best for your children



A holistic education can inspire love, confidence, joy, courage, and commitment within young learners

Unique International MUSIC and STEAM Kindergarten

Let children be the Masterpiece that God created them to be. Embracing your beloved child

“Let children be the Masterpiece that God created them to be” is the vision of United Christian Music Kindergarten (UCM). The first of its kind in Hong Kong, UCM offers a unique holistic education in a state-of-the-art environment.

Their one-of-a-kind educational experience inspires love, confidence, joy, courage, and commitment within young learners. UCM's holistic approach to education provides a clear pathway for young learners to any local, international, or music school. UCM believes that each child is unique, wonderfully made by God and should be entirely accepted and appreciated.



Music education strengthens reading skills and power of focusing

Music is a lifelong soulmate

UCM believes that children deserve the best possible start in life, and that music is "our lifelong soulmate" (emphasized by the school consultant Dr. Joanna Li). Research

from renowned institutions such as Harvard University have illustrated that exposure to music in early childhood can have a potent effect on a child's academic performance and overall wellbeing. Young learners at UCM begin to appreciate music, practicing at least one instrument early in life. Their exclusive professional, symphonic and systematic music curriculum incorporates four approaches: Eurythmics (Musical Sense), Choral Singing, Music Appreciation and Composition, and Instrumental Learning, giving UCM learners an in-depth and well-rounded foundation in music.

International Curriculum and Curiosity Capturing Environment

UCM offers an incredibly rich learning experience in the setting of an open-plan learning environment. Montessori teaching materials are also used in order to educate young learners through multi-sensory stimulation.

Academically, UCM is an International kindergarten incorporating a professional and systematic Music Curriculum, the International Early Years Curriculum (IEYC) and the Biblical Foundation for Early Years Chinese curriculum in a huge learning

space that can capture the curious minds of young learners. Additionally, UCM offers a range of advanced technologies so that children learn about the world from modern and relevant perspectives. These include coding design with robotic arms, and Virtual / Augmented Reality kits so that young learners gain a practical framework of how the world functions. This bridges them to the primary school STEAM curriculum as well as prepares learners to tackle future challenges, technological change and innovation.

The team at UCM strives to embrace every little learner's uniqueness, and parents will soon discover their child growing up with love, confidence and joy along with a burning passion to discover and learn more about the world.

United Christian Music Kindergarten

Entire 1/F, Capri, 33 Tong Yin St, Tseung Kwan O

Tel: 3841 4567

Email: info@ucm.edu.hk

Website: ucm.edu.hk



United Christian Music Kindergarten
聯合基督教音樂幼稚園



PN K1 - K3

APPLY NOW

*Limited space

Let Children be the Masterpiece that God created them to be

APPLY NOW 3841 4567
ucm.edu.hk

Early childhood has NO REHEARSAL
Give your beloved children the BEST start to life



Dr Maria-Christina J. A. Weemaes-Lidman
United Christian Music Kindergarten Founding Head

Info Session, Campus Tour and meet our Principal

Equip learners with full armor in HK's largest* International curiosity capturing Kindergarten focusing on music and STEAM learning

Develop critical and creative thinkers to strengthen math and reading skills with our professional and systematic UCM Music Curriculum

Equip and assist learners in being ready for the new age of technology with our comprehensive UCM STEAM programme

Grow self-confidence by performing on our state-of-the-art Music Theatre

Develop independent thinking through child centered, enquiry based and Montessori inspired Curriculum

Professional UCM Music / STEAM / Montessori interest classes for children 3 years old and up, Playgroup for 6 to 24-month-olds, UCM Parents' School, and Music and Worship School for 3-year-olds to adulthood are available for sign up NOW!

Address: Entire 1/F, Capri, 33 Tong Yin St, Tseung Kwan O *35,000 sq. ft GFA



Reggio Emilia and Inquiry Based Learning

Fairchild Kindergarten is, in the words of one of our children, 'that perfect place' where children come to school every day with a big smile. The Reggio Emilia approach at Fairchild Kindergarten supports children's learning through an inquiry-based approach in which we cultivate curiosity, creativity and confidence and wonder in each child.



Our thoughtfully designed school provides unique learning spaces and facilities for children to perceive the world, engaging the school environment as the third teacher. Our classrooms 'bring the outdoors in' through the use of natural light, wood and open ended resources including sand, water, soil and quality teaching materials to pique children's interests.

Our school encourages children's collaboration, communication and exploration while respecting the capability of children, and their interests. We honour children's right to play, with our dedicated and experienced educators supporting the building of strong relationships through rich, hands on learning.

At Fairchild, the development of the whole child in a play-focused

environment is central to everything we do. Play has key neurological, cognitive, socio-emotional and physiological benefits for children's health. A play based, inquiry led approach sets the scene for enjoyable, real learning experiences that really support the children's healthy growth and development.

The 'Hundred Languages' of Children is one aspect of the Reggio Emilia approach, which emphasizes hands-on discovery learning allowing the child to use all their senses and different 'languages' to learn and express themselves. As adults, we retain around 80% of what we experience, so providing a variety of rich experiences is so important for children at his young, formative stage, helping to reduce stress and anxiety.

Children are capable of constructing their own learning and are driven by their interests to wonder and understand more. By providing children with a sensory-rich learning environment at our school, using different natural resources, through the creative arts, music and movement, STEM activities, our children achieve academic skills such as reading and numeracy in a much more authentic and meaningful way.

We also provide an immersive language-rich environment for students, as an International school with a diverse community of children. We offer an International Stream as well as Dual Language Stream (in English & Mandarin) to promote bilingualism.



We believe life is a journey and not a race. We encourage children to enjoy their childhood with playful, interesting and age appropriate activities. We hope you will consider Fairchild and our unique learning environment for your child's journey of discovery through play and natural inquiry at Fairchild Kindergarten in Hong Kong.

For more information about Fairchild and Fairchild's approach to learning, please visit www.fairchild.edu.hk (Fairchild Kindergarten) and www.fairchild.academy (Fairchild Junior Academy).

Fairchild Kindergarten

G/F & 1/F Kong Chian Building, Block 1, 351 Des Voeux Road West, Sai Ying Pun, Hong Kong
Tel: 2803 2638

Fairchild Junior Academy

22/F, Park Commercial Centre, 180 Tung Lo Wan Road, Tin Hau, Hong Kong
Tel: 2898 1611



Fairchild Junior Academy
22/F Park Commercial Centre
180 Tung Lo Wan Road, Tin Hau
+852 2898 1611
info@fairchild.academy
www.fairchild.academy

Fairchild Kindergarten
G/F & 1/F Kong Chian Tower Block 1
351 Des Voeux Road West, Sai Ying Pun
+852 2803 2638
info@fairchild.edu.hk
www.fairchild.edu.hk



Cultivating Curiosity, Creativity and Confidence

At Fairchild, the process of inquiry-based learning through play, is inspired by the Reggio Emilia approach which recognises and values each child's potential. Our programs cross all areas of early childhood learning including physical, social and emotional development, cognitive and language development, problem-solving and innovating, nature and living.

Fairchild offers International and Dual Language (English & Mandarin) Streams classes for children aged 6 months to 6 years in our two campuses - Fairchild Junior Academy (Playgroup) & Fairchild Kindergarten.

To experience our Reggio Emilia inspired learning environment, contact us to book a school tour or sign up for one of our scheduled **Open Houses (Fairchild Junior Academy March 30 | Fairchild Kindergarten March 23)** to meet our experienced team.



Application open for 2019/20 - Contact us now !

Cultivate global leaders of tomorrow



Only the 'right' learning method can ensure students are happy, confident, well-motivated, and enthusiastic about learning.

Founded by Ms Joanna Hotung in 2013, Mills International Preschool is one of the education institutes sponsored by the Hotung family, a prominent pioneer and supporter of quality education in Hong Kong for over 100 years. "At Mills International Preschool, we aim to inspire and develop the global leaders of tomorrow," says Hotung.

Following the United Kingdom's Early Years curriculum framework, and teaching in English together with Mandarin, the school offers Playgroup, Pre-nursery (PN), as well as Kindergarten (K1-K3) programs, catering to children aged 6 months to 6 years old.

Mills International Preschool believes that every child has the right to achieve their full potential. In a supportive, stimulating, and high achieving learning environment, students will learn to challenge themselves, build upon their strengths, and excel in pursuing their passions.

In particular, Mills International Preschool is the only preschool and pre-nursery in Hong Kong that offers the MindUP curriculum, and joins a number of leading ESF and international primary as well as secondary schools, in providing this invaluable addition to the general curriculum.

MindUP curriculum

MindUP is a mindfulness training program devised by The Hawa Foundation in the United States. It provides a set of social, emotional,

and self-regulatory strategies to cultivate students' wellbeing and emotional balance. Basically, students will learn the techniques for focused attention, which will directly boost their happiness and make them more receptive to learning.

One of the objectives of this program is to help students understand, express, and manage the thoughts and feelings that collide in their minds every day. For example, its independent simple breathing strategy helps students regulate their thoughts and emotions, and allows them the mental space needed to maintain healthy minds and bodies, as well as to improve resiliency.

In addition, it is designed to encourage even the youngest students to gain more awareness of how their body and mind are connected. With better control of their reactions and emotions, students will become more capable to concentrate, supported by daily repetition of attentive listening, and regular 'brain breaks'.

Apart from individual growth, the program also helps improve cognitive, emotional, and social development of students to benefit themselves and others. Students are taught to be kind and have empathy for others, so they can learn to resolve conflicts without aggression, and acquire a greater appreciation for different opinions.

Importantly, students will learn how to name their emotions such as angry, sad, hungry, tired, jealous, happy, bored, frustrated, disappointed, and more, as an effective way to

improve their self-expression and self-management skills. Understanding their own feelings can achieve a calming effect and help reduce stress levels.

Stimulating Co-curricular program

Provided by Kids' Gallery and Star English, the co-curricular program nurtures enquiring minds and reinforce learning. It helps to develop various skills with diverse accredited courses that are worked in partnership with several well-respected and global authorities. Incorporating STEAM (science, technology, engineering, arts, and mathematics), the classes have adopted an interdisciplinary and applied approach. Classes are taught in English or Mandarin.

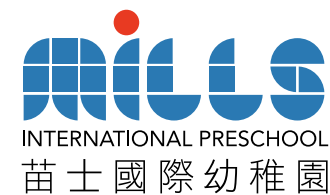
Mills International Preschool is a division of the KG Group, which has been at the forefront of education in Hong Kong for over 20 years, with graduates receiving offers of admission to some of the most highly regarded international and local primary schools in Hong Kong, including Harrow International School, ESF schools, and Kiangsu & Chekiang Primary School.

Mills International Preschool

The Spectacle, 8 Cho Yuen Street, Yau Tong, Kowloon, Hong Kong
Tel: 2717 6336

Email: preschool@millsinternational.edu.hk

Website: www.millsinternational.edu.hk

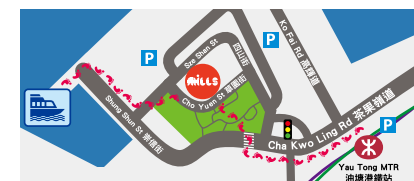


A division of the KG Group

One step ahead to a bilingual international education

6 months to 6 years | Playgroup | Pre-Nursery | K1 – K3 | Reception – Year 1

Limited number of places available now, and accepting applications for 2019 – 2020.



Mills International Preschool
苗士國際幼稚園
The Spectacle, 8 Cho Yuen Street
Yau Tong, Kowloon
2717 6336
preschool@millsinternational.edu.hk



Le Club des cinq FRENCH LEARNING CENTRE



A creative and immersive learning experience

Le Club des cinq is a boutique French language school based in Wan Chai, and it prides itself in raising students' fluency and self-confidence in speaking French. Teachers' main goal is to raise students' awareness of their strengths and good qualities, boosting their self-esteem while improving their fluency in the language with individualized teaching methods.

"I started the school because I felt there is a need here for an interactive learning environment,"

says Paul Chauvet, Founder and Director. "No matter the age, we have a communicative teaching approach that allows students to understand, speak, read, and write in an environment like home."

The school adopts an approach that bases learning on what interest students at different stages, focusing on project and interest-based learning. This way, genuine connections which reinforce self-esteem can be forged. Students will not only be

guided to write exceptional articles, make YouTube videos, and even try out French cooking, immersing themselves in efficient and progressive French learning.

The school offers specific programs for all ages. Classes are limited to five students to allow teachers to provide adequate attention to all students.

"We have excellent connections with schools and institutions such as the French International School and the McGill Alumni. We are constantly working with them, developing our school and striving to provide better education for students every year," says Chauvet.

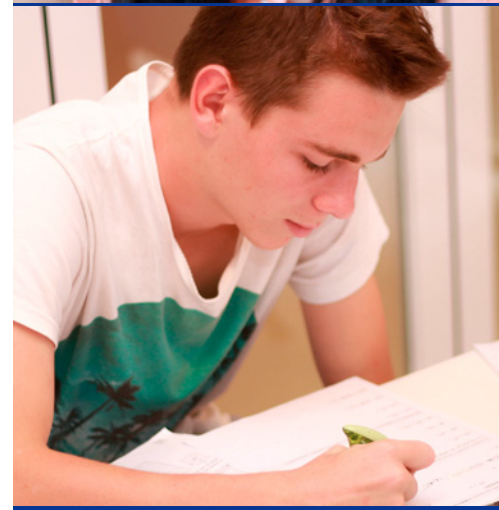
Le Club des cinq French Learning Centre

2F King Dao Building, 14 Burrows Street, Wanchai

Monday to Saturday: 8.30am to 9pm

Tel: 2575 4555 / 9773 7941

Email: contact@clubdes5.hk



Since 2013, we exclusively and proudly provide French Lessons

Experienced and certified teachers

Small groups or private classes

Programs for every ages

From Beginners to Native Speakers

Exam preparation classes IGCSE / IB

Partner of French International School

frenchlessons.hk - 25754555

DE LA MANO SPANISH

Learning Spanish hand in hand

We aim to make learning Spanish exciting and effective for everyone.



"De la mano" means "hand in hand" in Spanish, reflecting this teaching approach: being together with the students during the different phases of learning Spanish, listening to them to understand how they feel about their progress and learning experience.

Our story:

Marta Prieto, mum and Spanish educator, started "De la mano Spanish" to make learning Spanish exciting and effective for everyone. After years of teaching Spanish in International Schools in Hong Kong, Marta has learnt that the most important aspect for students when they are learning a foreign language is that they have to be motivated.

Our methodology:

"De la mano Spanish" is a magical place where you will learn Spanish language through an alternative methodology: PLAYING GAMES. Because the most effective learning is the learning that is transmitted through the game, as endorsed in numerous studies in the field of education.

Benefits of this methodology:

- High levels of motivation towards learning a foreign language
- Reduces dispersion, inactivity and non-comprehension problems
- Fear of making mistakes is eliminated
- Control over the learning process itself
- Greater dedication to learning
- Enables functionality of the learned contents

Our courses are tailored for each age group (from 3 years to teens) and level.

PLAYGROUP – For Age Group: 3-5

Educational curriculum designed to be the perfect introduction to Spanish learning.

SPANISH FOR KIDS – For Age Group: 6-12

Engaging curriculum designed for primary students, developing the confidence and fluency in the use of Spanish.

SPANISH FOR TEENS – For Age Group: 13-17

Course approach is oriented towards students of secondary education, where Spanish has become an elective subject in Hong Kong curriculum.

PREPARATION FOR SPANISH OFFICIAL EXAMS:

Across the years De la mano Spanish has successfully prepared many students for the main Spanish official exams:

DELE (16+ years) and DELE FOR YOUNG

LEARNERS (9-16 years)

IGCSE (12-16 years)

HKDSE (10-18 years)

IB (16-18)

Our teachers:

Carefully selected native Spanish speakers with previous experience in education of Spanish as a foreign language

Our teaching materials:

We have developed our own syllabus and teaching materials (i.e. didactic units, worksheets, flashcards), which are used consistently by all our teachers, to ensure our students always receive a high quality and uniform learning experience.

DE LA MANO SPANISH is at:

We offer engaging Spanish language classes to kids and teens in prime locations across Hong Kong Island, Kowloon and New Territories:

- Southern District (One Island South)
- Heng Fa Chuen
- Tseung Kwan O
- Shatin
- Lam Tin

What are our references?

We have experience in different International Schools and Kindergartens in Hong Kong, and this is what their principals say about us:

- Teachers are professional, efficient and highly organized
- Students are engaged and challenged appropriately
- Students are excited about the task at hand
- Lessons are designed to maximize student learning
- Students are motivated and are keen to learn a new language



De la mano Spanish

Tel: 9317 7006

Email: info@delamanospanish.com

Website: www.delamanospanish.com



We Make Learning Spanish Exciting and Effective for Everyone!



LEARNING SPANISH- hand in hand



We believe in learning Spanish "De la mano" – hand in hand! We aim to make learning Spanish exciting and effective for everyone.

After years of teaching Spanish in International Schools in Hong Kong, we have learnt that the most important aspect for students when they are learning a foreign language is that they have to be motivated. With that in mind, we have developed a teaching approach where communication and interaction with the students are the key factors.

We offer Spanish classes to kids and teens in prime locations across Hong Kong Island, Kowloon and New Territories.

COME AND JOIN US FOR A FREE TRIAL LESSON!



Grooming bilingual world citizens of tomorrow

Located in Shum Wan overlooking Aberdeen Harbour, Victoria Shanghai Academy (VSA) is the first through-train IB World School in Hong Kong to offer International Baccalaureate programmes for over 1,800 students from years 1 to 12, including Primary Years Programme, Middle Years Programme and Diploma Programme. With the three programmes, IB aims to foster critical-thinking skills and a sense of international-mindedness in its students.

VSA's bilingual educational model is underpinned by the IB continuum of programmes. The main features of the IB programmes at VSA include the integration of the best of international and local bilingual education to develop active learners and well-rounded individuals, build strong bilingual foundation in Putonghua and English, as well as embrace

international-mindedness and cultural awareness.

The IB Primary Years Programme at VSA is a transdisciplinary programme that focuses on the development of the child holistically in both the classroom and in the world outside, as well as helping students' to reach their personal and academic potentials. Delivered by two teachers (Western and Chinese) in each classroom, the programme aims to maximize students' daily learning and use of both English and Putonghua within the classroom.

The IB Middle Years Programme at VSA emphasizes the use of concept-based inquiry learning approach that supports students' personal and intellectual growth. To equip students as strong bilingual learners, they are allowed up to 40% of curriculum time to focus on their language development.

The programme provides a framework of academic challenge that encourages students to embrace and understand the connections between traditional subjects and the real world, becoming critical and reflective thinkers within an inquiry approach to teaching.

The IB Diploma Programme at VSA is an academically challenging and balanced two-year programme that provides breadth and depth of studies to prepare students for further education. While the programme culminates in external examinations, VSA IB Diploma Programme graduates have always achieved impressive results and received offers from prestigious universities around the world. In 2018, the average score is above 36.3, with two perfect scorers of 45 points and two near-perfect 44 points.

In addition to academic success, Creativity, Activity, Service (CAS) are equally important. At VSA, students organize and participate in an array of activities, both locally and globally, through which they develop a greater sense of international mindedness and social responsibility.

Victoria Shanghai Academy

19 Shum Wan Road, Aberdeen
Tel: 3402 1000
Email: enquiries@vsa.edu.hk
Website: www.vsa.edu.hk



滬江維多利亞學校
 VICTORIA SHANGHAI ACADEMY



www.vsa.edu.hk

香港仔深灣道19號
 19 Shum Wan Road, Aberdeen, Hong Kong
 +852 3402-1000
 enquiries@vsa.edu.hk





ESF – inspiring the global leaders of tomorrow

The English Schools Foundation is the largest provider of English-medium international education in Hong Kong. For over 50 years, we have been nurturing talent, supporting learners and their families – and preparing young men and women to be the global leaders of tomorrow.

Former students of ESF's 22 schools can be found in every part of the world. Our size – and our proud history means that our alumni have been shaping the world in which we live for decades.

Our outstanding results are a testament to our outstanding

teaching staff – but that is not the whole story. At the heart of our success is our approach to teaching – which starts with our International Baccalaureate Primary Years Programme (PYP).

ESF schools have been following the International Baccalaureate programme for almost 20 years now. In that time, we have evolved teaching from a 'teacher teaches, pupil listens' model, to one where every student is an active participant in their own learning.

Walk into any one of our schools and you will see our learners confidently showing the skills that

they will need to be a success in the future. They don't just listen, they question. They don't just receive information – they analyse it and consider what it means for our world now – and in the future.

Simply put, we want every student to be the very best they can be. Our award winning sports programme regularly brings top level coaches and athletes to our schools – and our Language and Learning syllabus brings art and culture to life.

We live in a globally connected world. At ESF we make sure our student enjoy learning – and get ready to take the lead in whatever field they choose to enter.

You can find out more about ESF and how we are inspiring the global leaders of tomorrow by visiting our website www.esf.edu.hk or by following us on social media.

English Schools Foundation

25/F, 1063 King's Road, Quarry Bay, Hong Kong
Tel: 2574 2351
Email: info@esfcentre.edu.hk
Website: www.esf.edu.hk/



INSPIRING FUTURES

Come Join our ESF Family

Join our upcoming seminars and tours to learn more about our curriculum, educational philosophy and admissions process!

ESF Information Seminars

SECONDARY

26 March
6 pm – 7 pm

How Personalised Learning in ESF Secondary Schools Paves the Way to Success
 Venue: ESF Centre, Quarry Bay

8 April
5 pm – 6:45 pm

ESF South Island School - Parent Briefing and Tour
 **Focus on the Middle to Senior Years 9 to 13 – IGCSEs, IB Diploma and BTEC!
 Venue: ESF South Island School, Aberdeen

KINDERGARTEN & PRIMARY

9 April, 7 & 21 May
8:15 am OR 1:15 pm

ESF Tung Chung International Kindergarten -- Parent Briefing and Tour
 Venue: The Visionary, Tung Chung, Lantau

27 May
6 pm – 7 pm

An Education Worth Having at the Kindergarten and Primary stages
 Venue: ESF Centre, Quarry Bay

Seats are limited. Enrol NOW at this link: www.esf.edu.hk/parent-seminars/

English Schools Foundation

25/F • 1063 King's Road • Quarry Bay • Hong Kong
 Tel +852 2574 2351 • Fax +852 2818 5690
 • info@esfcentre.edu.hk • www.esf.edu.hk

Immediate school places available
APPLY NOW

www.esf.edu.hk/applyESF-school

Connect us on:



Empowering students to pursue their pathways

"NAIS is not just a school. It is a family." Yenni Muchsin is the mother of two daughters, Isabelle Kwon and Victoria Kwon, who are currently attending Year 4 and Year 2 at Nord Anglia International School Hong Kong (NAIS). Here, in her own words, is the story of her family's experiential journey with the school so far.



When I was looking for a school for my elder child, Isabelle, I was inundated with choices. Hong Kong, if nothing, has a whole plethora of international schools for parents to choose. I wanted a school that has a diverse student population, is welcoming of a multicultural expat family, and offers a creative and nurturing educational environment for my child to blossom and grow. Luckily, I have a friend whose child had enrolled in Nord Anglia International School Hong Kong (NAIS), and she told me about the school with experienced teachers, quality curriculum and the happy and confident students. When I visited the campus and talked to the staff and faculty, I left assured that NAIS is the school for my daughter. To date, both my daughters, Isabelle and Victoria, are learning and growing with NAIS.

NAIS offers an excellent curriculum, combined with proven teaching methods that has been praised and approved by many parents and experienced educators. I love the school's modern teaching method which allows my children to learn more with less homework. The school is teaching relevant skills and providing up to date knowledge to prepare the students for the modern world. Languages, Mathematics and Art are not the usual boring compartmentalised

subjects. Instead they are made relevant when intertwined with STEAM topics.

NAIS has a group of highly-qualified teachers and staff who are absolutely heart-warming. They bring out the best in my children – stimulating their minds and increasing their confidence. My elder daughter, Isabelle, is very interested in the arts. She is given plenty of guidance and opportunities to experience and to engage in this subject so that she can discover her own potential. She has been inspired by many artists, authors, and musicians' workshops organised by the school. My second daughter, Victoria, has improved academically, thanks to her patient teachers and a positive learning environment. Beyond the classrooms, my children get to enjoy an extensive choice of after-school activities and forge closer friendships with their school mates.

NAIS is not just a school. It is a family. The school's international environment and inclusive culture makes it the best fit for my multicultural family. My children benefit from its diverse community and enjoy learning about world cultures through events in "Global Campus" and the annual International Day. My children always enjoy these special events because they have the chance to introduce their home country and also to experience other cultures.

Parents are not excluded in their children's educational journey. We are encouraged to volunteer and participate in school activities, so as to better understand the school's ethos and learning environment. These activities also allow us to forge closer bonds with the faculty and staff, as well as the other NAIS families. For me, volunteering my time during International Day, library reading sessions and community outreach programmes are definitely memorable and are treasured time spent with the NAIS community.

For any parent asking me whether I have made the right choice in choosing Nord Anglia International School for my children, my reply would be a resounding, "Yes!"

Nord Anglia International School Hong Kong

Campus:
(Primary and Secondary)
11 On Tin Street, Lam Tin, Kowloon
(Pre-school)
Red Hill Plaza, Red Hill Road,
Tai Tam, Hong Kong
(Pre-school)
285 Hong Kin Road, Tui Min Hoi,
Sai Kung, New Territories
Tel: 3958 1428
Website: www.nais.hk
Email: admissions@nais.hk

You want the best for your child. *So do we.*

At NAIS Hong Kong, we nurture every child to develop a love of learning, enabling them to achieve more than they ever thought possible. We do this across three fantastic campuses and are known for our warm and friendly global community made up of over 40 nationalities. We provide an all-round, through-train education for students aged 3-18, beginning with the English National Curriculum, from the Early Years Foundation Stage to IGCSEs, followed by the internationally accepted IB Diploma Programme.

Now offering Express Admissions – *Apply today* to join us in August.



NORD ANGLIA
INTERNATIONAL SCHOOL
HONG KONG



Parkview International Pre-School 栢基國際幼稚園暨幼兒園

Where Early Years Matter



PIPS HONG KONG

Streams: English and Bilingual
Age: 12 months to 6 years
Address: Tower 18 Parkview,
88 Tai Tam Reservoir Road, HK
Tel: 2812 6023 Fax: 2812 2938

PIPS KOWLOON

Streams: Bilingual and Trilingual
Age: 12 months to 6 years
Address: Podium Level, Kowloon Station,
1 Austin Road West, Kowloon
Tel: 2812 6801 Fax: 2812 6201

www.pips.edu.hk



Directory

ABC Pathways International Kindergarten

Tai Koo Campus
G/F, Block 8&9, Kornhill Garden,
1124 King's Road, Quarry Bay
Tel: 2110 1211
Email: enquiry.tk@ABCpathways.edu.hk

Whampoa Campus
Shop No. 25, G/F, Site 11,
Whampoa Garden, Hung Hom
Tel: 2110 9993
Email: enquiry.wp@ABCpathways.edu.hk
Website: abcpathways.edu.hk
Year founded: 2014
Curriculum: International

Alison's Letterland International Kindergarten

Flat C, 2/F, Marco Polo Mansions,
10 Cleveland Street, Causeway Bay,
Hong Kong
Tel: 2504 1978
Email: admin@ais.edu.hk
Website: www.international-playgroup-kindergarten.com
Year founded: 1996
Curriculum: Early Years Foundation Stage

American International School

125 Waterloo Road, Kowloon Tong
Tel: 2336 3812
Email: admissions@ais.edu.hk
Website: www.ais.edu.hk
Year founded: 1986
Curriculum: US Common Core State Standards and AP Courses

American School Hong Kong

6 Ma Chung Road, Tai Po, NT
Tel: 3919 4111
Email: admissions@ashk.edu.hk
Website: www.ashk.edu.hk
Year founded: 2016
Curriculum: US, IB

Anfield International Kindergarten

5 Cumberland Road, Kowloon Tong,
Kowloon
Tel: 2794 3668
Email: admin@anfield.edu.hk
Website: www.anfield.edu.hk
Year founded: 1999

Anfield International Kindergarten and Nursery

L2, Phase 1, Laguna Verde,
8 Laguna Verde Avenue,
Hung Hom, Kowloon
Tel: 2766 3882
Email: admin-lv@anfield.edu.hk

Anfield School

No. 1, Lung Pak Street, Tai Wai,
Shatin, N.T.
Tel: 2692 8823
Email: office@anfield.edu.hk
Website: www.anfield.com.hk
Year founded: 2008
Curriculum: Other

Antonia International Kindergarten

Shop Nos. 31 - 33, 78 - 80 & 84 - 87,
LG/F, Tsuen Wan Garden Phase I,
15 - 23 Castle Peak Road, Tsuen Wan,
New Territories
Tel: 2612 0984
Email: admin@antonia-kindergarten.com
Website: www.antonia-kindergarten.com
Year founded: 2014
Curriculum: Early Years Foundation Stage

Aristle International Kindergarten

Causeway Bay Campus
Unit 302, 3/F., One Hysan Avenue,
Causeway Bay, Hong Kong.
Tel: 2801 7920

Tsim Sha Tsui Campus

Unit 807, 8/F., Lippo Sun Centre, 28
Canton Road, Tsim Sha Tsui, Kowloon.
Tel: 2801 7910
E-mail: info@aristle-gifted.com
Website: www.aristle-gifted.com

Aristle International Kindergarten and Nursery

Shop 1, G/F. & Shop 2, 1/F., Emerald
Twenty-Eight, 22 & 26 Tai Po Road,
Tai Po, Kowloon.
Tel: 2323 2982
Email: info@aik.edu.hk
Website: www.aik.edu.hk
Year founded: 2010
Curriculum: International

Australian International School Hong Kong

3A Norfolk Road, Kowloon Tong
Tel: 2304 6078
Email: info@aishk.edu.hk
Website: www.aishk.edu.hk
Year founded: 1995
Curriculum: Australian National Curriculum, IBDP

Avendale international Kindergarten

The Parkside Campus
101-103, The Parkside Mall,
18 Tong Chun Street, Tseung Kwan O
Tel: 2866 6720

Harmony Garden Campus

Kindergarten, Harmony Garden,
9 Siu Sai Wan Road, Siu Sai Wan
Tel: 2866 8260

Sai Wan Campus

1-2 Floor, 554-560 Queen's Road West,
Sai Wan
Tel: 3619 1136
Email: enquiry@avendale.school
Website: www.avendale.school
Year founded: 2018
Curriculum: Reggio Emilia inspired emergent curriculum

Bambino English Playschool

Causeway Tower, 4/F., Flat F, 16-22
Causeway Road, Causeway Bay,
Hong Kong.
Tel: 2576 5269
Email: kgtn@netvigator.com
Year founded: 1978



SDM-Chatsworth International Kindergarten 新加坡卓營國際幼稚園



Chatsworth Kindergarten (Singapore)

ADMISSIONS OPEN NOW

本季及下年度現正招生

K1-K3

- An affiliated school of the Chatsworth Group of schools - a **top-ranked international school in Singapore** since 1995
- **Global learning experiences**, international buddy programme
- **Singapore-based** multi-lingual curriculum
- Project-based approach
- Happy and harmonious environment
- Preparation for both local and international primary education
- 新加坡著名國際學校 - Chatsworth的姐妹學校。Chatsworth於1995年創校，為**新加坡頂尖國際學府之一**
- 提供**國際交流體驗**，跨國學習夥伴計劃
- **新加坡課程**為藍本的多國語言教學
- 專題研習為本教學
- 愉快及多元學習環境
- 銜接本地及國際小學

Please contact us for school tour 歡迎預約參觀校園：

Address 地址: G/F, 31 Cambridge Road, Kowloon Tong 九龍塘劍橋道31號地下

Tel 電話: 3952 8299 **Whatsapp:** 5901 2918 **Email 電郵:** info@sdm-chatsworth.hk

www.sdm-chatsworth.hk

*School Registration number 學校註冊編號 609315



Directory

Blooming Buds Preschool

Unit 7, 1/F., Island Crest, 8 First Street, Sai Ying Pun, Hong Kong.

Tel: 2887 9921

Email: enquiry@bloomingbuds.com.hk

Website: www.bloomingbuds.com.hk

Year founded: 2012

Curriculum: Reggio Emilia Approach and the Creative Curriculum

Box Hill (HK) International Kindergarten & Pre-school

Ma On Shan Campus

G/F., Tower 10, Phase 1, Vista Paradiso, No. 2 Hang Ming Street, Ma On Shan

Tel: 2750 6323

Email: mos@boxhill.com.hk

Fo Tan Campus

No. 327, Podium of Jubilee Square, Fo Tan

Tel: 2688 2161

Email: fotan@boxhill.com.hk

Tseung Kwan On Campus

Shop K01, Level 2, Metro Town, Tseung Kwan O, N.T.

Tel: 2623 0023

Email: tko@boxhill.com.hk

Kwai Chung Campus

No. 21, G/F., Commercial Complex of Wonderland Villas, 9 Wah King Hill Road, Kwai Chung, N.T.

Tel: 2151 1383

Email: wl@boxhill.com.hk

Website: www.boxhill.edu.hk

Year founded: 2004

Curriculum: Early Years Foundation Stage

Brightland International Kindergarten

Shop 1, Wing A, Block A, Tak Nga Court, 2 Hiu Wan Road, Tai Po

Tel: 2651 3311

Email: info@brightland.edu.hk

Website: brightland.edu.hk

Year Founded: 2016

British Council International Pre-School

1/F, British Council, 3 Supreme Court Road, Admiralty

Tel: 2913 5290

Email: preschool@britishcouncil.org.hk

Website: www.britishcouncil.hk

Year founded: 2016

Curriculum: Other

Canadian International School of Hong Kong

36 Nam Long Shan Road, Aberdeen

Tel: 2525 7088

Email: schoolinfo@cdnis.edu.hk

Website: www.cdnis.edu.hk

Year founded: 1991

Curriculum: IB and OSSD

California School

3/F, Front Block, Lung Ma Building, 550 Nathan Road, Yau Ma Tei

Tel: 2388 9844 / 9822 7549

Email: info@californiaschool.edu.hk

Website: www.californiaschool.edu.hk

Year founded: 1992

Curriculum: IGCSE, A-Levels

Carmel School

10 Borrett Road, Mid-Levels

Tel: 2964 1600

Email: brcadmin@carmel.edu.hk

Website: www.carmel.edu.hk

Year founded: 1991

Chinese Academy

77 Caroline Hill Road, Causeway Bay, Hong Kong.

Tel: 2499 8000

Email: enquiry@caps.edu.hk

Website: www.caps.edu.hk

Year founded: 2017

Curriculum:

Primary: Bilingual Immersion in English & Chinese (Putonghua);
Secondary: IB MYP, IB DP

Chinese International School

1 Hau Yuen Path, Braemar Hill, North Point

Tel: 2510 7288

Email: cis_info@cis.edu.hk

Website: www.cis.edu.hk

Year founded: 1983

Curriculum:

Primary: balanced and integrated dual language curriculum in both English and Chinese; Secondary: IBMYP & IBDP. In Year 10, students study the IB MYP in our satellite campus in Hangzhou (CIS Hangzhou)

Christian Alliance International School

33 King Lam Street, Lai Chi Kok, Kowloon.

Tel: 3699 3899

Email: info@caisbv.edu.hk

Website: www.caisbv.edu.hk

Concordia International School

68 Begonia Road, Yau Yat Chuen

Tel: 2789 9890

Email: office@concordiantl.edu.hk

Website: www.cihs.edu.hk

Year founded: 1990

Curriculum: North American

Creative Secondary School

3 Pung Loi Road, Tseung Kwan O, Sai Kung

Tel: 2336 0233

Email: admin@css.edu.hk

Website: www.ccs.edu.hk

Year founded: 2006

Curriculum: HKDSE, IBMYP, IBDP

Dalton School Hong Kong

G/F, Imperial Cullinan, 10 Hoi Fai Road, Kowloon

Tel: 3612 4660

Email: info@dshk.edu.hk

Website: www.dshk.edu.hk

Year founded: 2017

Curriculum: US Common Core Standards, Own

David Exodus Kindergarten

Upper Ground Podium, Block 4, Julimount Garden, Tai Wai, Shatin, N.T.
Tel: 2699 0100
Website: www.davidexodus.edu.hk
Year founded: 1989
Curriculum: Own

Deborah Educational Institute:

Deborah International Pre-school/ Play-school (Tseung Kwan O)

Kindergarten Tower, Bauhinia Garden, 11 Tong Chun Street, Tseung Kwan O
Tel: 3403 4393
Curriculum: International

Deborah International Pre-school/ Play-school (Hung Hom)

1/F, Site 2 and G/F, Site 7, Whampoa Garden, Hung Hom, Kowloon
Tel: 2362 8379 (Site 2) / 2774 1669 (Site 7)
Curriculum: International / Japanese International

Mink International Pre-school/ Play-school

Level 1, Sun Hing Garden, Tai Po, N.T.
Tel: 2665 4333

Topkids International Kindergarten / Play-school

1/F., Shing Fat Building, 14 Yuen Long Tai Cheung Street, Yuen Long, N.T.
Tel: 2447 2669

Wellborn International Pre-school / Play-school

Kindergarten & Nursery Tower, Chevalier Garden, Ma On Shan, N.T.
Tel: 2642 6033
Website: www.deborah-intl.edu.hk
Year founded: 1978
Curriculum: Early Years Foundation Stage

Delia School of Canada

5-7, Tai Fung Avenue, Taikoo Shing
Tel: 3658 0400
Email: admissions@delia.edu.hk
Website: www.delia.edu.hk
Year founded: 1987
Curriculum: Ontario Curriculum, / Alberta Curriculum, Canada

Diocesan Boys School Primary Division & Diocesan Boys School

131 Argyle Street, Mongkok, Kowloon.
Tel: 2711 5191
Email: dbsadmin@dbs.edu.hk
Website: www.dbs.edu.hk
Year founded: 1869
Curriculum: HKDSE, IBDP

Diocesan Girls' School

1 Jordan Road, Kowloon.
Tel: 2277 9100
Email: info@dgs.edu.hk
Website: www.dgs.edu.hk
Year founded: 1860
Curriculum: HKDSE, A-Levels

Discovery Bay International School

Discovery Bay, Lantau Island
Tel: 2914 2142 (Kindergarten) / 2987 7331 (Primary / Secondary)
Email: dbis@dbis.edu.hk
Website: www.dbis.edu.hk
Year founded: 1983
Curriculum: British National Curriculum and International Primary Curriculum

Discovery Mind Kindergarten/ International Play Centre

Discovery Bay Campus
 401, Marina Commercial Centre, G/FL., 2-8 Coastline Villa, Peninsula Village, Discovery Bay.
Tel: 2987 8088
Email: dmk@discoverymind.edu.hk

Tung Chung Campus

G/F, Seaview Crescent, No. 8 Waterfront Road, Tung Chung.
Tel: 2987 8070
Email: dmtc@discoverymind.edu.hk

Discovery Mind Primary School

Discovery Bay Campus
 1/F, Shop 102, 92 Siena Avenue, North Plaza, Discovery Bay
Tel: 2914 2202
Email: admission_db@discoverymind.edu.hk

Tung Chung Campus

G/F, Shop A-D Seaview Crescent, No. 8 Waterfront Road, Tung Chung.
Tel: 2915 0666
Email: admission_tc@discoverymind.edu.hk
Website: www.discoverymind.edu.hk
Year founded: 2012
Curriculum: IPC

Discovery Montessori Academy

Block 1, 92 Siena Ave, Discovery Bay, Lantau Island, Hong Kong.
Tel: 2812 9206
Email: primary@dms.edu.hk
Website: www.dms.edu.hk
Year founded: 2015
Curriculum: Montessori

Discovery Montessori School

Discovery Bay Campus
 Shop 101, 1/F, 92 Siena Avenue, Discovery Bay, Lantau Island, Hong Kong
Tel: 2987 1201
Email: enquiry@discoverymontessori.info

Central Campus

3/F., Mandarin Building, 34-43 Bonham Strand, Central, Hong Kong.
Tel: 2850 8006
Email: enquiry@dms.edu.hk
Website: www.dms.edu.hk
Year founded: 2010
Curriculum: Montessori

ELCHK Lutheran Academy

25 Lam Hau Tsuen Road, Yuen Long, N.T.
Tel: 8208 2092
Email: info@luac.edu.hk
Website: www.luac.edu.hk
Year founded: 2010
Curriculum: Local, IBDP

Elsa High School, Carmel School Association

460 Shau Kei Wan Road, Shau Kei Wan
Tel: 3665 5388
Email: elsahighschool@carmel.edu.hk
Website: www.carmel.edu.hk
Year founded: Carmel School Association was founded in 1991 and Elsa High School was established in 2009
Curriculum: International Baccalaureate

English Schools Foundation

25/F., 1063 King's Road, Quarry Bay, Hong Kong.
Tel: 2574 2351
Email: info@esfcentre.edu.hk
Website: www.esf.edu.hk
Year founded: 1967

ESF Abacus International Kindergarten

1A Mang Kung Uk Road, Clearwater Bay
Tel: 2719 5712
Email: kinder@abacus.edu.hk
Website: www.abacus.edu.hk
Year founded: 2002
School Type: Private
Curriculum: IB Primary Years Programme

ESF Beacon Hill School

23 Ede Road, Kowloon Tong
Tel: 2336 5221
Email: bhs@bhs.edu.hk
Website: www.beaconhill.edu.hk
Year founded: 1967
School Type: ESF
Curriculum: IB Primary Years Programme

ESF Bradbury School

43C Stubbs Road, Happy Valley
Tel: 2574 8249
Email: enquiries@bradbury.edu.hk
Website: www.bradbury.edu.hk
Year founded: 1992
School Type: ESF
Curriculum: IB Primary Years Programme

ESF Clearwater Bay School

DD 229, Lot 235, Clearwater Bay Road, Clearwater Bay
Tel: 2358 3221
Email: info@cwbs.edu.hk
Website: www.cwbs.edu.hk
Year founded: 1980
School Type: ESF
Curriculum: IB Primary Years Programme

ESF Discovery College

38 Siena Avenue, Discovery Bay, Lantau Island
Tel: 3969 1000
Email: office@dc.edu.hk
Website: www.discovery.edu.hk
Year founded: 2007
School Type: Private
Curriculum: IB Primary Years Programme, IB Middle Years Programme, IB Diploma

ESF Glenealy School

7 Hornsey Road, Mid Levels
Tel: 2522 1919
Email: enquiry@glenealy.edu.hk
Website: www.glenealy.edu.hk
Year founded: 1959
School Type: ESF
Curriculum: IB Primary Years Programme

ESF Hillside International Kindergarten

43B Stubbs Road, Mid-Levels East
Tel: 2540 0066
Email: kinder@hillside.edu.hk
Website: www.hillside.edu.hk
Year founded: 1999
School Type: Private
Curriculum: IB Primary Years Programme

ESF Island School

20 Borrett Road, Mid Levels (permanent campus currently under redevelopment)
Temporary campuses:

Island School Sha Tin Wai (Years 7, 8, 12, 13)

Pok Hong Estate, Area 5A, Sha Tin, New Territories, Hong Kong

Island School Tai Wai (Years 9, 10, 11)

Estate Secondary School No.2, Sun Chui Estate, Sha Tin, New Territories
Tel: 2524 7135
Email: school@online.island.edu.hk
Website: www.island.edu.hk
Year founded: 1967
School Type: ESF
Curriculum: GCSE/IGCSEs, IB Diploma, Applied Learning Programme (BTEC qualifications)

ESF Jockey Club Sarah Roe School

2B Tin Kwong Road, Homantin
Tel: 2761 9893
Email: info@jcsrs.edu.hk
Website: www.jcsrs.edu.hk
Year founded: 1985
School Type: ESF
Curriculum: Primary Learning Programme, ASDAN Award Programme, Transition Challenge Programme, Towards Independence Challenge

ESF Kennedy School

19 Sha Wan Drive, Pokfulam
Tel: 2579 5600
Email: admissions@kennedy.edu.hk
Website: www.kennedy.edu.hk
Year founded: 1961
School Type: ESF
Curriculum: IB Primary Years

ESF King George V School

2 Tin Kwong Road, Homantin
Tel: 2711 3029
Email: office@kgv.edu.hk
Website: www.kgv.edu.hk
Year founded: 1902
School Type: ESF
Curriculum: GCSE/IGCSEs, IB Diploma, Applied Learning Programme (BTEC qualifications)

ESF Kowloon Junior School

20 Perth Street, Homantin, Kowloon, Hong Kong
Tel: 3765 8700
Email: office@kjs.edu.hk
Website: www.kjs.edu.hk
Year founded: 1902
School Type: ESF
Curriculum: IB Primary Years Programme

ESF Peak School

20 Plunketts Road, The Peak
Tel: 2849 7211
Email: office@peakschool.net
Website: www.ps.edu.hk
Year founded: 1911
School Type: ESF
Curriculum: IB Primary Years Programme

ESF Quarry Bay School

6 Hau Yuen Path, Braemar Hill, North Point
Tel: 2566 4242
Email: office@qbs.edu.hk
Website: www.qbs.edu.hk
Year founded: 1926
School Type: ESF
Curriculum: IB Primary Years Programme

ESF Renaissance College

5 Hang Ming Street, Ma On Shan
Tel: 3556 3556
Email: admissions@rchk.edu.hk
Website: www.rchk.edu.hk
Year founded: 2006
School Type: Private
Curriculum: IB Primary Years Programme, IB Middle Years Programme, IB Diploma, IB Career-related Programme

ESF Sha Tin College

3 Lai Wo Lane, Fo Tan, Sha Tin
Tel: 2699 1811
Email: info@shatincollege.edu.hk
Website: www.shatincollege.edu.hk
Year founded: 1982
School Type: ESF
Curriculum: IGCSE, IB Diploma

ESF Sha Tin Junior School

3A Lai Wo Lane, Fo Tan Sha Tin, New Territories, Hong Kong
Tel: 2692 2721
Email: info@sjs.esf.edu.hk
Website: www.sjs.edu.hk
Year founded: 1988
School Type: ESF
Curriculum: IB Primary Years Programme

ESF South Island School

50 Nam Fung Road, Aberdeen, Hong Kong
Tel: 2555 9313
Email: sis@sis.edu.hk
Website: www.sis.edu.hk
Year founded: 1977
School Type: ESF
Curriculum: GCSE/IGCSEs, IB Diploma, IB Career-related Programme, Applied Learning Programme (BTEC qualifications)

ESF Tsing Yi International Kindergarten

Maritime Square, 33 Tsing King Road, Tsing Yi
Tel: 2436 3355
Email: admissions@tyk.edu.hk
Website: www.esf.edu.hk
Year founded: 1999
School Type: Private
Curriculum: IB Primary Years Programme

ESF Tung Chung International Kindergarten

1/F, Commercial Accommodation, The Visionary, 1 Ying Hong Street, Tung Chung, Lantau, N.T.
Tel: 3742 3500
Email: kinder@tc.esf.org.hk
Website: www.tck.edu.hk
Year founded: 2016
School Type: Private
Curriculum: IB Primary Years Programme

ESF West Island School

250 Victoria Road, Pok Fu Lam, Hong Kong
Tel: 2819 1962
Email: wis@wis.edu.hk
Website: www.wis.edu.hk
Year founded: 1991
School Type: ESF
Curriculum: GCSE/IGCSEs, IB Diploma, Applied Learning Programme (BTEC qualifications)

ESF Wu Kai Sha International Kindergarten

Level 1, Lake Silver Tower, 599 Sai Sha Road, Ma On Shan
Tel: 2435 5291
Email: kinder@wksk.edu.hk
Website: www.wksk.edu.hk
Year founded: 2009
School Type: Private
Curriculum: IB Primary Years Programme

EtonHouse International Pre-School

LG/F Kindergarten, Mayfair By The Sea I, 23 Fo Chun Road, Tai Po
Tel: 2780 5700
Email: enquiry@etonhouse.com.hk
Website: www.etonhouse.com.hk
Year founded: 1995
Curriculum: Inquiry based Reggio Emilia inspired curriculum

Fairchild Junior Academy

22/F, Park Commercial Centre, 180 Tung Lo Wan Road, Tin Hau, Hong Kong
Tel: 2898 1611

Fairchild Kindergarten

G/F & 1/F., Kong Chian Tower, Block 1, 351 Des Voeux Road West, Sai Ying Pun, Hong Kong
Tel: 2803 2638
Email: info@fairchild.edu.hk
Website: Fairchild.edu.hk
Year founded: 2016
Curriculum: Reggio Emilia inspired learning through play and inquiry

Forest House Waldorf School

Commercial Development Floral Villas, 18 Tso Wo Road, Sai Kung
Tel: 2792 6055
Email: info@foresthouse.edu.hk
Website: www.waldorf.edu.hk
Year founded: 2014
Curriculum: Waldorf

French International School

Blue Pool Road Campus
 165 Blue Pool Road, Happy Valley

Chai Wan Campus

1 Cheung Man Road, Chai Wan, Hong Kong.

Jardine's Lookout Campus

34 Price Road, Jardine's Lookout, Hong Kong.

Tseung Kwan O Campus

28 Tong Yin Street, Tseung Kwan O, N.T.
Tel: 2577 6217
Email: info@lfis.edu.hk
Website: www.fis.edu.hk
Year founded: 1963
Curriculum: English National Curriculum to IGCSE then IBDP
 French National Curriculum

Galilee International School – Kindergarten & Nursery

G/F & 1/F, Peace Garden, 2 Peace Avenue, Ho Man Tin, Kowloon
Tel: 2390 3000
Email: gis@gis.edu.hk
Website: www.gis.edu.hk
Year founded: 2014
Curriculum: International

Garden House Pre-school and Playgroup

G/F, Silverstrand Shopping Centre, 7 Silverstrand Beach Road, Clearwater Bay
Tel: 2358 1177
Email: info@gardenhouse.edu.hk
Website: www.gardenhouse.edu.hk
Year founded: 2008
Curriculum: Waldorf

German Swiss International School

Main Campus
 11 Guildford Road, The Peak
Tel: 2849 6216

Pok Fu Lam Campus (Kindergarten, Lower Primary & Business College)

162 Pok Fu Lam Road, Pok Fu Lam, Hong Kong
Tel: 2849 6217
Email: info@gsis.edu.hk
Website: www.gsis.edu.hk
Year founded: 1969
Curriculum: Primary: drawn from best practices from the UK, Canada, Australia, New Zealand;
 Year 7-9: broadly based on the National Curriculum of England and Wales;
 Year 10-11: I/GCSE;
 Year 12-13: IB Diploma

Gigamind English Primary School

Block A, 9 Tin Lung Road, Phase 6, Maywood Court, Kingswood Villas, Tin Shui Wai, N.T.
Tel: 2446 9883
Email: info@gigamind.edu.hk

Gigamind Kindergarten & Children's House

Block B, 9 Tin Lung Road, Phase 6, Maywood Court, Kingswood Villas, Tin Shui Wai, N.T.
Tel: 2446 9210
Email: kginfo@gigamind.edu.hk
Website: www.gigamind.edu.hk
Year founded: 2001
Curriculum: Own

Grace Garden International Nursery and Kindergarten

Shop F, Ground Floor, Phase III, Ocean Shores, 88 O King Road, Tiu Keng Leng
Tel: 3547 1338
Email: enquiry@gracegarden.edu.hk
Website: www.gracegarden.edu.hk
Year founded: 2015
Curriculum: Early Years Foundation Stage

Hamilton Hill International Kindergarten

UG/F, Ching Wah Mansion, No.1-3 Ching Wah Street, North Point
Tel: 3461 9750
Email: admissions@hhik.edu.hk
Website: www.hhik.edu.hk
Year founded: 2015
Curriculum: International

Han Academy

G/F - 2/F, 33-35 Wong Chuk Hang Road, Aberdeen, Hong Kong
Tel: 3998 6300
Email: admission@hanacademy.edu.hk
Website: www.hanacademy.edu.hk
Year Founded: 2017
Curriculum: Cambridge (Primary, Secondary, IGCSE, A Level), IBDP (candidate school)

Harrow International School Hong Kong

38 Tsing Ying Road, Tuen Mun
Tel: 2824 9099
Email: info@harrowschool.hk
Website: www.harrowschool.hk
Year founded: 2012
Curriculum: International

Highgate House School

2/F, 100 Peak Road, The Peak
Tel: 2849 6336
Website: www.highgatehouse.edu.hk
Year founded: 1992
Curriculum: Waldorf

HKCA Po Leung Kuk School

62 Tin Hau Temple Road, Hong Kong
Tel: 3465 8400
Email: info@plkis.edu.hk
Website: www.plkis.edu.hk/
Year Founded: 2017
Curriculum: IBPYP

Hong Kong Academy

33 Wai Man Road, Sai Kung
Tel: 2655 1111
Email: office@hkacademy.edu.hk
Website: www.hkacademy.edu.hk
Year founded: 2000
Curriculum: IBPYP, IBMYP, IBDP

Hong Kong Adventist Academy

1111 Clear Water Bay Road, Sai Kung
Tel: 2623 0034
Email: info@hkaa.edu.hk
Website: www.hkaa.edu.hk
Year founded: 2011
Curriculum: Local curriculum with electives from the American curriculum

Hong Kong Chinese Christian Churches Union Logos Academy

Campus I

No. 5, Ling Kwong Street, Tseung Kwan O, N.T.
Tel: 2337 2126

Campus II

No. 1, Kan Hok Lane, Tseung Kwan O, N.T.
Tel: 2337 2123

Email: info@logosacademy.edu.hk
Website: www.logosacademy.edu.hk
Year founded: 2011
Curriculum: HKDSE, IBDP

Hong Kong International Learning Academy

Unit 7 & 8G Office Block One, North Plaza, 92 Siena Avenue, Discovery Bay
Tel: 2416 3198
Email: hkilacademy@gmail.com
Website: https://www.studyhkila.com

Hong Kong International School

Tai Tam Campus

1 Red Hill Road, Tai Tam
Tel: 3149 7000

Repulse Bay Campus

23 South Bay Close, Hong Kong
Tel: 2812 5000
Email: admissions@hkis.edu.hk
Website: www.hkis.edu.hk
Year founded: 1966
Curriculum: American with Advanced Placement courses offered in High School

International Christian School

Shek Mun Campus

1 On Muk Lane, Shek Mun
Tel: 3920 0000

Ma On Shan Campus (International Kindergarten)

G/F, Kam Ho House (Block H), Kam Fung Court, Ma On Shan, Shatin, N.T.
Email: ics@ics.edu.hk
Website: www.ics.edu.hk
Year founded: 1991
Curriculum: American, AP

International College Hong Kong (Secondary)

60 Sha Tau Kok Road, Shek Chung Au, Sha Tau Kok
Tel: 2655 9018
Email: info@ichk.edu.hk
Website: www.ichk.edu.hk
Year founded: 1984
Curriculum: IBPYP, English, IGCSE, IBDP

International College Hong Kong Hong Lok Yuen (Kindergarten & Primary)

3, Twentieth Street, Hong Lok Yuen, Tai Po
Tel: 3955 3000
Email: info@ichkhly.edu.hk
Website: www.ichk.edu.hk
Year founded: 1984
Curriculum: IBPYP, English, IGCSE, IBDP

Island Children's Montessori Kindergarten

Tin Hau Campus

Units B & C, LG/F & UG/F, 16 Tin Hau Temple Road, Tin Hau

Lei King Wan Campus

Shop GC 19-21 Site C, Tai Hong Street, Lei King Wan, Hong Kong.

Island Christian Academy

70 Bridges Street, Sheung Wan
Tel: 2537 2552
Email: office@islandca.edu.hk
Website: www.islandca.edu.hk
Year founded: 2012
Curriculum: IPC

Island Montessori International Kindergarten

North Point Campus

Commercial Unit, G/F., Bedford Gardens, 151-173 Tin Hau Temple Road, North Point, Hong Kong.
Tel: 3427 9100
Email: info@icms.edu.hk
Website: www.icms.edu.hk
Year founded: 2010
Curriculum: Montessori

Island Christian Academy

70 Bridges Street, Sheung Wan
Tel: 25372552
Email: office@islandca.edu.hk
Website: www.islandca.edu.hk
Year founded: 2012
Curriculum: IPC

Island Waldorf School of Hong Kong

G/F 71-77 Smithfield, Kennedy Town, Hong Kong
Tel: 5114 1451
Email: info@iwshk.org
Website: www.iwshk.org
Year Founded: 2017
Curriculum: Waldorf

Japanese International School (International Section)

4663 Tai Po Road, Tai Po
Tel: 2834 3531
Email: esinfo@jis.edu.hk
Website: es.jis.edu.hk
Year founded: 1997
Curriculum: IB Primary Years Programme

Jing Jing International Kindergarten & Nursery

Shop No. 47-54, Chi Lok Fa Yuen, 18 Tsing Hoi Circuit, Tuen Mun, N.T.
Tel: 2404 5266
Email: bg@jingjing.edu.hk
Website: www.jingjing.edu.hk
Year founded: 2011
Curriculum: EYFS

Kellett School

Kowloon Bay Preparatory and Senior Campus

7 Lam Hing Street, Kowloon Bay

Po Fu Lam Preparatory Campus

2 Wah Lok Path, Wah Fu, Pok Fu Lam, Hong Kong.
Tel: 3120 0700
Email: admissions@kellettschool.com
Website: www.kellettschool.com
Year founded: 1976
Curriculum: English National Curriculum including IGCSE and A-level

Kendall International Preschool

G/F, Residence 228, 228 Fuk Wing Street, Cheung Sha Wan, West Kowloon, Hong Kong
Tel: 2328 8223
Email: info@kendallpreschool.edu.hk
Website: www.kendall.edu.hk/
Year Founded: 2017
Curriculum: Own

Kiangsu & Chekiang Primary School & Kiangsu-Chekiang College (International Section)

Lower School

30 Ching Wah Street, North Point, Hong Kong
Tel: 2570 4594

Upper School

20 Braemar Hill Road, North Point
Tel: 2570 1281
Email: inter@kcis.edu.hk (Primary)
Email: inter2@kcis.edu.hk (Secondary)
Website: www.kcis.edu.hk
Year founded: 1993
Curriculum: Early Years Foundation Stage (EYFS); British National Curriculum; IB Diploma

Kingston International Kindergarten and Children Centre

12-14 Cumberland Road, Kowloon Tong, Kowloon,
Tel: 2339 9049
Email: enquiry@kingston.edu.hk
Website: www.kingston.edu.hk
Curriculum: IB Primary Years Programme

Kingston International School

Lower Primary Campus

113 Waterloo Road, Kowloon Tong, Kowloon
Tel: 2337 9031

Upper Primary Campus

105 Waterloo Road, Kowloon Tong, Kowloon.
Tel: 2337 9012
Email: enquiry@kingston.edu.hk
Website: www.kingston.edu.hk
Curriculum: IB Primary Years Programme

Korean International School

55 Lei King Road, Sai Wan Ho, Hong Kong
Tel: 2569 5500
Email: kisints@kis.edu.hk (International Section)
Email: kiskors@kis.edu.hk (Korean Section)
Website: www.kis.edu.hk
Year founded: 1994
Curriculum: English, IGCSE, A-Levels, Korean

Kowloon Baptist Church Kindergarten

2/F., 300 Junction Road, Kowloon Tong, Kowloon.
Tel: 2336 6213
Email: kbck@netvigator.com
Website: www.kbck.edu.hk
Year founded: 1975
Curriculum: Own

Kowloon Funful Kindergarten & Children's Corner

20 Durham Road, Kowloon Tong
Tel: 2337 0686 / 2337 6883

Lantau International School

Cheung Sha Campus

No. 22, Upper Cheung Sha Village, Lantau Island, Hong Kong
Tel: 2984 0302

Tong Fuk Campus

House 113, Tong Fuk Village, Lantau, Hong Kong
Tel: 2980 3676

Pui O Campus

No. 17-19, Lo Wai Tsuen, Pui O, Lantau Island, Hong Kong
Tel: 2984 0302

Email: lisadmin@lis.edu.hk

Website: www.lis.edu.hk

Year founded: 1995

Curriculum: British Curriculum

Leapfrog Kindergarten and Playgroup

11 Pak Tam Chung Village, Sai Kung Country Park, Sai Kung.
Tel: 2791 1540
Email: admim@leapfrogkindergarten.org
Website: www.leapfrogkindergarten.org
Year founded: 1992
Curriculum: EYFS

Li Po Chun United World College

10 Lok Wo Sha Lane, Sai Sha Road, Shatin
Tel: 2640 0441
Email: office@lpcuwc.edu.hk
Website: www.lpcuwc.edu.hk
Year founded: 1992
Curriculum: IBDP

Little Dalton Kindergarten

Hong Kong Island Campus
KG01, Wah Sin House, Wah Kwai Estate, Pok Fu Lam, Hong Kong.
Tel: 2792 2566
Email: info@littledalton.com

West Kowloon Campus

G/F, Imperial Cullinan, 10 Hoi Fai Road, Kowloon
Tel: 3612 5760
Email: infoic@littledalton.com
Website: www.littledalton.com
Year founded: 2013
Curriculum: Own

Lou Pichoun

Stanley Campus

1/F., 5 Stanley New Street, Stanley, Hong Kong.
Tel: 2813 2456

Happy Valley Campus

G/F Door C, 22 Fung Fai Terrace, Hong Kong
Tel: 2813 2456
Email: loupichounhk@gmail.com
Website: www.loupichoun.com
Year founded: 1997
Curriculum: French, Own

MAGART International Kindergarten

Whampoa Campus:

Shop No. G3A on the Ground Floor, Site 7, Whampoa Garden, Hung Hom, Kowloon, HK
Tel: 2786 9699

Tai Koo Campus:

Shop B on the Upper Ground Floor of Park Vale, No. 1060 King's Road, HK
Tel: 2786 9152
Email: info@magartedu.com
Website: www.magartedu.com
Year Founded: 2018
Curriculum: EYFS

Malvern College Hong Kong

Fo Chun Road, Pak Shek Kok, Tai Po
Tel: 3898 4699
Email: info@malverncollege.org.hk
Website: www.malverncollege.org.hk
Year founded: 2018
Curriculum: IB

Malvern College Pre-school Hong Kong

Units 9-12, Coronation Circle, 1 Yau Cheung Road, Southwest Kowloon.
Tel: 3898 4668
Email: mcpsinfo@malvernpreschool.hk
Website: www.malvernpreschool.hk

MASS International Preschool

Shop 2, G/F & LG/F, Lai Tak Plaza, Tai Hang Road, Causeway Bay
Tel: 3955 1588
Email: info@masspreschool.edu.hk
Website: www.masspreschool.com
Year founded: 2012
Curriculum: Other

Mighty Oaks Nursery & Kindergarten

1/F, Lungga Mansion, 46A Belcher's Street, Kennedy Town, Hong Kong
Tel: 2806 8383
Email: info@mightyoaks.edu.hk
Website: www.mightyoaks.edu.hk
Year founded: 2015
Curriculum: Early Years Foundation Stage

Mills International Preschool

The Spectacle, 8 Cho Yuen Street, Yau Tong, Kowloon, Hong Kong
Tel: 2717 6336
Email: preschool@millsinternational.edu.hk
Website: www.millsinternational.edu.hk
Year founded: 2013
Curriculum: Early Years Foundation Stage

Montessori for Children

House A, Phoenix Garden, RBL 1033 Tai Tam Village, Stanley, Hong Kong.
Tel: 2813 9589
Email: hongkong@montessori.edu.sg
Website: www.montessori.edu.sg
Year founded: 1986
Curriculum: Montessori

Mori Lisa International Kindergarten

Level 5 Flat Roof, Block 7, Greenwood Terrace, Chai Wan
Tel: 3176 1236
Email: info@morilisa.hk
Website: www.morilisa.hk
Year founded: 2014
Curriculum: Early Years Foundation Stage

Morningstar Preschool and Kindergarten

Block 2, G/F, Chi Fu Fa Yuen, Pok Fu Lam
Tel: 6993 7157
Email: hello@morningstarschools.com
Website: www.morningstarpreschool.com.hk
Year founded: 2011
Curriculum: International

Mount Kelly School Hong Kong

Upper G/F, Austin Tower, 152 Austin Road, Tsim Sha Tsui, Kowloon, Hong Kong
Tel: 2157 9557
Preparatory School Campus
 2/F, Austin Tower, 152 Austin Road, Tsim Sha Tsui, Kowloon
Tel: 2110 9557

Preschool Campus

Shop 5 on G/F & 1/F, The Austine Place, 38 Kwun Chung Street, Kowloon, Hong Kong
Tel: 2736 0800

Babies and Toddlers (Tsim Sha Tsui) Campus

Shop 2A, Phase 1, G/F, The Austin Tower, 152 Austin Road, Tsim Sha Tsui, Kowloon, Hong Kong
Tel: 2157 9587

Babies and Toddlers (Jordan) Campus

Shop 3, G/F, The Austin Place, 38 Kung Chung Street, Kowloon, Hong Kong
Tel: 2317 8881

Mui Wo OWLS School & Kindergarten

1st Floor, Unit A, Silver Centre Building, Mui Wo Ferry Pier Road, Mui Wo, Lantau.
Tel: 2984 0006
Email: office@muiwoowlsschool.edu.hk
Website: www.muiwoowlsschool.edu.hk
Year founded: 2010
Curriculum: English

Nord Anglia International School

Primary & Secondary Campus
 11 On Tin Street, Lam Tin, Kowloon

Pre-school

Red Hill Plaza, Red Hill Road, Tai Tam, Hong Kong.

Pre-school

285 Hong Kin Road, Tui Min Hoi, Sai Kung, N.T.
Tel: 3958 1428
Email: admissions@nais.hk
Website: www.nais.hk
Year founded: 2014
Curriculum: English, IGCSE, IBDP

Norwegian International School

Kindergarten Campus

175 Kwong Fuk Road, Tai Po
Tel: 2638 0269
Email: kinder@nis.edu.hk

Primary School Campus

170 Kam Shan Road, Kam Shan Village, Tai Po
Tel: 2658 0341
Email: office@nis.edu.hk
Website: nis.edu.hk
Year founded: 1984
Curriculum: IPC, UK Literacy Curriculum, Australian Mathematics Curriculum

Parkview International

Pre-School Hong Kong Island Campus

Tower 18, Parkview, 88 Tai Tam Reservoir Road, Hong Kong
Tel: 2812 6023
Email: pipsinfo@pips.edu.hk
Year founded: 1989
Curriculum: International Baccalaureate (IB)

Kowloon Campus

Podium Level, Kowloon Station, 1 Austin Road West, Kowloon
Tel: 2812 6801
Email: pipsinfo-kl@pips.edu.hk
Website: www.pips.edu.hk
Year founded: 2007
Curriculum: International Baccalaureate (IB)

Parkview Rhine Garden Preschool

Tower 1, 1st Floor, Rhine Garden, 38 Castle Peak Road, Sham Tseng, N.T.
Tel: 2491 1082
Email: school@pipsrg.edu.hk
Year founded: 1994

Parkview-Rhine Garden International Nursery

Tower 5, 1Podium Level 2, Rhine Garden, 38 Castle Peak Road, Sham Tseng, N.T.
Tel: 2496 2080
Email: school@pipsrg.edu.hk
Website: pipsrg.edu.hk
Year founded: 1994

Piccolo Monte International Kindergarten

166 Boundary Street, Kowloon Tong
Tel: 2338 6336
Email: info@pmikg.edu.hk
Website: www.pmikg.edu.hk
Year founded: 2015
Curriculum: Early Years Foundation Stage

Po Leung Kuk Choi Kai Yau School

6 Caldecott Road, Piper's Hill, Kowloon
Tel: 2148 2052
Email: info@cky.edu.hk
Website: www.cky.edu.hk
Year founded: 2002
Curriculum: Own, IGCSE, IBDP

Pods Kindergn & Preschool

Tin Hau Campus

11 Tin Hau Temple Road, Tin Hau, Hong Kong.
Tel: 3460 3560
Harbour Heights Campus
 G01B & 1/F., Harbour Heights, 1 Fook Yum Road, North Point, Hong Kong.
Tel: 2242 2261

Rightmind International Nursery & Kindergarten

Shum Wan Campus
 G/F., Broadview Court, No. 11 Shum Wan Road, Hong Kong.
Tel: 2795 1018
Year founded: 2013
Curriculum: Own

South Horizons Campus

UG/F, Tower 26-28, South Horizons, Phase 4, Ap Lei Chau
Tel: 2875 0452
Email: parentservice@kinderu.org
Website: www.rmkg.org
Year founded: 1980
Curriculum: Other

Rosebud Primary School

UG 28-37 Waterside Plaza, 38 Wing Shun Street Tsuen Wan
Tel: 2406 7300
Email: info@rosebud.edu.hk
Website: www.rosebud.edu.hk
Year Founded: 2004
Curriculum: IPC

Safari Kid International Kindergarten

Happy Valley Campus

16 Min Fat Street, Happy Valley, Hong Kong.
Tel: 2177 0001
Email: happyvalley@safarikidasia.com

Pok Fu Lam Campus

L101 Chi Fu Landmark, Chi Fu Fa Yuen, Pok Fu Lam
Tel: 2177 0001
Email: infohk@safarikidasia.com
Website: www.safarikidasia.com
Year founded: 2005
Curriculum: Other

Sai Kung International Pre-school

159 Che Keng Tuk Road, Sai Kung
Tel: 2791 7354
Email: skip@skip.edu.hk
Website: skip.edu.hk
Year founded: 1989
Curriculum: Early Years Foundation Stage

Sai Kung Montessori

Unit SB, 787 Tan Cheung, Po Tung Road, Sai Kung
Tel: 5369 8587
Email: info@saikungmontessori.com
Website: www.saikungmontessori.com
Year Founded: 2017
Curriculum: Montessori

San Wui Commercial Society YMCA of Hong Kong Christian School

5 Kwong Lee Road, Sham Shui Po, Kowloon.
Tel: 2361 3383
Email: info@cs.edu.hk
Website: www.cs.edu.hk
Year founded: 2013
Curriculum: Own

Sear Rogers International School

15 Tong Yam Street, Tai Hang Tung, Kowloon
Tel: 2547 5479
Email: enquiry@srishk.com
Website: www.srishk.com
Year founded: 1982
Curriculum: English, IGCSE, A-Levels

SDM-Chatworth International Kindergarten

G/F, 31 Cambridge Road, Kowloon Tong, Kowloon
 Tel: 3952 8299
 Email: info@sdm-chatsworth.hk
 Website: www.sdm-chatsworth.hk
 Year Founded: 2017
 Curriculum: Singapore-based curriculum

Shrewsbury International School Hong Kong

10 Shek Kok Road, Tseung Kwan O, New Territories.
Tel: 2480 1500
Email: enquiries@shrewsbury.hk
Website: www.shrewsbury.hk
Year founded: 2018
Curriculum: English National Curriculum

Singapore International School

Preparatory Years and Primary Section
 23 Nam Long Shan Road, Aberdeen
Tel: 2872 0266
Email: general@singapore.edu.hk

Secondary Section

2 Police School Road, Wong Chuk Hang, Hong Kong.
Tel: 2919 6966
Email: secondary@singapore.edu.hk
Website: www.singapore.edu.hk
Year founded: 1991
Curriculum: Singapore curriculum, IGCSE, IBDP

Sky Wide International Kindergarten & Playschool

Shop B on G/F & 1/F, 1 San Wai Street, Hung Hom, Kowloon, HK
Tel: 2827 7868
Email: enquiry@skywide.hk
Website: www.skywide.hk
Year founded: 2017
Curriculum: Finnish

Small World Christian Kindergarten

10 Borrett Road, Mid-Levels
Tel: 2525 0922
Email: office@smallworld.edu.hk
Website: smallworld.edu.hk
Year founded: 1986
Curriculum: International

Southside Kindergarten

G203, The Repulse Bay, 109 Repulse Bay Road, Repulse Bay
Tel: 2592 7527
Email: info@southside.edu.hk
Website: southside.edu.hk
Year founded: 2000
Curriculum: Early Years Foundation Stage, Other

Spanish Primary School

DD26, Lot 989, Ting Kok Road, Shuen Wan, Tai Po, N.T.
Tel: 3955 1588
Email: info@spis.com.hk
Website: www.spis.com.hk

St. Paul's Covent School (Secondary Section)

140 Leighton Road, Causeway Bay, Hong Kong.
Tel: 2576 0601
Website: www.spcs.edu.hk
Year founded: 1854
Curriculum: HKDSE, IGCSE, A-Levels

St. Stephen's College

22 Tung Tau Wan Road, Stanley, Hong Kong.
Tel: 2813 0360
Email: sschk@ssc.edu.hk
Website: www.ssc.edu.hk
Year founded: 1903
Curriculum: IBDP, HKDSE

Stamford American School Hong Kong

25 Man Fuk Road, Ho Man Tin
 Tel: 2500 8688
Email: admissions@sais.edu.hk
Website: www.sais.edu.hk
 Year founded: 2017
 Curriculum: Inquiry-based American Curriculum with AERO and Common Core Plus Standards

Sunshine House International Pre-school

Chi Fu Campus
 G/F, Block 1, Fu Lai Yuen, Chi Fu Fa Yuen, 1 Chi Fu Road, Pok Fu Lam
Tel: 2551 3781
Email: chifu@sunshinehouse.com.hk

Clearwater Bay Campus
 Level 7, Silverstrand Mart, No. 2 Cape Road, Clearwater Bay, Sai Kung
Tel: 2358 3803
Email: clearwaterbay@sunshinehouse.com.hk

Discovery Bay Campus

Shop 137 – 138, 1st Floor, D.B. Plaza, Discovery Bay
Tel: 2987 8143
Email: dbay@sunshinehouse.com.hk

Pok Fu Lam Campus

Commercial Development Block A, Pok Fu Lam Gardens
Tel: 2551 3213
Email: pokfulam@sunshinehouse.com.hk

Tung Chung Campus

No. 2 Mei Tung Street, Tung Chung Crescent, Lantau Island
Tel: 2109 3873
Email: tungchung@sunshinehouse.com.hk
Website: www.sunshinehouse.com.hk
Year founded: 1990
Curriculum: Other

The Harbour School

Main campus
 2/F, 23 Belcher's Street, Kennedy Town, Hong Kong
Tel: 2816 5222

The Garden Campus

138 Lee Chi Road, Ap Lei Chau
Tel: 3708 9060

The Grove Campus

332 Ap Lei Chau Bridge Road, Ap Lei Chau
Tel: 3905 0180
Email: info@ths.edu.hk
Website: www.ths.edu.hk
Year founded: 2007
Curriculum: American (AERO standards)

The International Montessori School of Hong Kong

Aldrich Bay Campus
 G/F, i-UniQ Grand, 155 Shau Kei Wan Road, Shau Kei Wan, Hong Kong
Tel: 2156 9033
Email: admin.ab@ims.edu.hk

Mid-Level Campus

Mezzanine Entrance, Tung Fai Gardens, 17 Po Yan Street, Sheung Wan, Hong Kong
Tel: 2857 7007
Email: admin.ml@ims.edu.hk

South Horizons Campus

G/F, Blocks 23 to 23A, South Horizons, Phase III, Ap Lei Chau, Hong Kong
Tel: 2861 0339
Email: admin.sh@ims.edu.hk

Stanley Campus

Phase III, Ma Hang Estate, Stanley (off Stanley Plaza), Hong Kong
Tel: 2566 7196
Email: admin.st@ims.edu.hk
Website: www.ims.edu.hk
Year founded: 2002
Curriculum: Montessori

The ISF Academy

1 Kong Sin Wan Road, Pokfulam
Tel: 2202 2028
Email: admissions@isf.edu.hk
Website: academy.isf.edu.hk
Year founded: 2003
Curriculum: Own, IBMYP, IBDP

The ISF Pre-School

Shop 2-4, G/F, 17 Po Yan Street, Sheung Wan
Tel: 2559 8518
Email: psenquiry@isf.edu.hk
Website: preschool.isf.edu.hk
Year founded: 2015
Curriculum: Other

Think International Academy

11 Kwong Lee Road, Cheung Sha Wan
Tel: 2157 2111
Email: think_ta@think.edu.hk
Website: www.think.edu.hk
Year founded: 2016
Curriculum: IBPYP, Cambridge CIE Secondary 1 & 2, IBDP

Think International School

117 Boundary Street, Kowloon Tong, Kowloon.
Tel: 2338 3949
Email: think_tis@think.edu.hk

Think International Kindergarten

Kowloon Tong Campus
 5 Lincoln Road, Kowloon Tong
Tel: 2338 0211
Email: thinkkg_kt@think.edu.hk

Laguna Campus

99 Cha Kwo Ling Road G/F, Kowloon
Tel: 2727 4747
Email: thinkkg_lc@think.edu.hk

Ma On Shan Campus

Level 2, Sunshine Bazaar, 628 Sai Sha Road, Ma On Shan, NT
Tel: 2633 7800
Email: thinkkg_mos@think.edu.hk

Mei Foo Campus

The Podium, Nob Hill, 8 King Lai Path, Mei Foo, Kowloon
Tel: 2727 7585
Email: thinkkg_mf@think.edu.hk
Website: www.think.edu.hk
Year founded: 2003
Curriculum: Other

Tsim Sha Tsui Funful International Kindergarten

No.136 Nathan Road, Tsim Sha Tsui, Kowloon
Tel: 2311 3883 / 2311 4707
Website: www.funful.hk
Year founded: 1969
Curriculum: Local, International

Tutor Time International Nursery & Kindergarten

Kowloon Tong – Dorset Crescent
 No. 1 Dorset Crescent, Kowloon Tong
Tel: 2573 9188

Kowloon Tong – Suffolk Road
 No. 9 Suffolk Road, Kowloon Tong
Tel: 2529 1188

Mid Level – Caine Road

Shop A-B, G/F., Botanical Court, 5 Caine Road, Mid-Levels, Hong Kong
Tel: 2529 2288

North Point - Braemar Hill

LG/F & G/F Braemar Hill Shopping Center, 45 Braemar Hill Road, Hong Kong
Tel: 3529 1833

Yuen Long – Yoho

Shop G011, Ground Level and Mezzanine Level, Yoho Mall 1, No. 9 Yuen Lung Street, Yuen Long, N.T.
Tel: 2392 8188
Email: info@tutortime.com.hk
Website: www.tutortime.com.hk
Year founded: 2001

Umah International Primary School

Fung Chi Tsuen, Wang Chau, Yuen Long, New Territories.
Tel: 2618 3172 / 2450 5401
Email: umahdin@umahhk.com
Website: www.umah.wordpress.com/umah-international-primary-school/umahhk.com
Year founded: 1996
Curriculum: Own

United Christian Mucis Kindergarten

Capri Entire 1/F, 33 Tong Yin St, Tseung Kwan O
Tel: 3841 4567
Email: info@ucmkg.org
Website: ucmkg.org
Year Founded: 2018
Curriculum: IEYC, Mucis Curriculum, STEAM, Sports and Greenery

Victoria Education Organisation

Belcher Campus

Podium of Level 3 (Kindergarten Area), The Westwood, 8 Belcher's Street, Hong Kong.
Tel: 2542 7001
Email: bgvkoffc@victoria.edu.hk

Harbour Green Campus

G/F., Harbour Green, 8 Sham Mong Road, Kowloon.
Tel: 2885 1928
Email: hgvk@victoria.edu.hk

Harbour Heights Campus

Victoria Nursery, Ko Fung Court, Harbour Heights, 5 Fook Yum Road, North Point, Hong Kong.
Tel: 2571 7888
Email: hhvnoff2@victoria.edu.hk

Homantin Campus

9 Carmel Village Street, Carmel-on-the-Hill, Homatin, Kowloon.
Tel: 2762 9130
Email: hmtoffc@victoria.edu.hk

Lower Kornhill Campus

2 - 8 Hong On Street, Kornhill, Hong Kong
Tel: 2885 3331
Email: lkvkoffc@victoria.edu.hk

Middle Kornhill Campus

2/F., No. 18 Hong On Street, Kornhill, Hong Kong
Tel: 2885 1888
Email: mkvkoffc@victoria.edu.hk

South Horizons Campus

Phase II, Podium Level, South Horizons, Hong Kong.
Tel: 2580 8633
Email: shvkoffc@victoria.edu.hk

Upper Kornhill Campus

G/F., No. 14 Hong Yue Street, Kornhill, Hong Kong.
Tel: 2513 1208
Email: ukoffc@victoria.edu.hk
Website: www.victoria.edu.hk
Year founded: 1965
Curriculum: IBPYP, TCRWP

Victoria Shanghai Academy

19 Shum Wan Road, Aberdeen
Tel: 3402 1000
Email: enquiries@vsa.edu.hk
Website: www.vsa.edu.hk
Year founded: 2004
Curriculum: IBPYP, IBMYP, IBDP

Wellcome International Kindergarten & Nursery

G/F, Outside The Sherwood, 8 Fuk Hang Tsuen Road, Lam Tei
Tel: 2813 2121
Email: info@wellcomekg.hk
Website: www.wellcomekg.hk
Year founded: 2012
Curriculum: Early Years Foundation Stage

Wembley International Kindergarten

2/F, Tang Kung Mansion, 31 Taikoo Shing Road, Taikoo Shing
Tel: 2567 5454
Email: wik@pacific.net.hk
Website: kindergartenhongkong.blogspot.hk
Year founded: Private
Curriculum: GCSE/ IGCSEs, IB Diploma, Applied Learning Programme (BTEC qualifications)

Wilderness International Kindergarten

Ground Floor, Po Tak Mansion, 85 Smithfield Rd, Kennedy Town, Hong Kong
Tel: 2595 9066
Email: admissions@wilderness.asia
Website: www.wilderness.asia
Year founded: 2016

Woodland Montessori Academy

On Fung Building, 110-118 Caine Road, Mid Levels, Hong Kong
Tel: 2549 1211

Woodland Repulse Bay Montessori Pre-school

G118-119 Ground Floor, The Repulse Bay, 109 Repulse Bay Road, Hong Kong
Tel: 2803 1885
Email: montessorirb@woodlandschools.com

Woodland Group of Preschool Head Office

Suite 2405 Universal Trade Centre, 3-5A Arbuthnot Road, Central, Hong Kong.
Tel: 2559 4855
Email: enquiry@woodlandschools.com

Woodland Junior Academy

G/F., Kam Kin Mansion, 119-125 Caine Road, Mid Levels, Hong Kong
Tel: 2549 1211
Email: montessoricr@woodlandschools.com
Website: www.woodlandschools.com
Year founded: 1978
Curriculum: Montessori, EYFS

Yew Chung International School (YCIS)

Secondary Section

3 To Fuk Road, Kowloon Tong

Primary Section

2 Kent Road, Kowloon Tong

Early Childhood Education

3 Somerset Road, Kowloon

Tel: 2338 7106

Email: admissions@ycef.com

Website: www.ycis-hk.com

Year founded: 1932

Curriculum: International curriculum, IGCSE, IB Diploma Programme

YMCA of Hong Kong

Christian International Kindergarten (West Kowloon)

Lower Ground Floor, No. 373 Po On Road, Cheung Sha Wan, Kowloon.

Tel: 2281 6089

Email: christianikgwk@ymcahk.org.hk

Website: www.bc.ymcahk.org.hk

Year founded: 2011

Curriculum: EYFS, Own

YMCA of Hong Kong Christian College

12 Chung Yat Street, Tung Chung, Lantau.

Tel: 2988 8123

Email: info@ymcacc.edu.hk

Website: www.ymcacc.edu.hk

Year founded: 2003

Curriculum: HKDSE, IGCSE, A-Levels

YMCA of Hong Kong International Kindergarten

2/F., 41 Salisbury Road, Tsim Sha Tsui, Kowloon.

Tel: 2268 7766

Email: kindergarten@ymcahk.org.hk

Website: www.ymcaikg.edu.hk

Year founded: 2003

Curriculum: EYFS, Own

Zebedee International Kindergarten & Nursery

G/F Yat Wing House, Yat Nga Court, Nam Wan Road, Tai Po

Tel: 2650 3339

Email: admin@zebedee.edu.hk

Website: www.zebedee.edu.hk

Year founded: 2008

Curriculum: Early Years Foundation Stage

Bebegarten Education Centre

Unit 301-305, Level 3,
One Island South, 2 Heung Yip Road,
Wong Chuk Hang
Tel: 3487 2255
Email: info@bebegarten.com
Website: www.bebegarten.com
Year founded: 2013
Curriculum: Other

Bridge Academy Education Centre

3F, Wui Tat Centre,
55 Connaught Road West, Sheung Wan
Tel: 3563 8060
Email: info@bridge.edu.hk
Website: www.bridge.edu.hk
Year founded: 2014

CANA Elite Education Centre

Sheung Wan Branch

2/F, 135 Bonham Strand Trade Centre,
Bonham Strand (MTR Exit A2),
Sheung Wan
Tel: 2302 6500

Shek Mun Branch

Unit H, 6/F, Kings Wing Plaza I,
3 On Kwan Street, Shek Mun
(MTR Exit C), N.T.
Tel: 2459 9718

Fo Tan Branch

506B, 5/F, Jubilee Square,
2-18 Lok King Street, Fo Tan, N.T.
Tel: 2389 2918
Email: cana@canaelite.com
Website: www.canaelite.com

Capstone Prep Education Center

Primary Section

5-6/F., 111 Leighton Road,
Causeway Bay, Hong Kong.
Tel: 2893 6067

Secondary Section

2/F, One Hysan Avenue, Causeway Bay
Tel: 2893 6060
Email: info@capstoneprep.com
Website: www.capstoneprep.com
Year founded: 2003

City Kids Preschool & Playgroup

2nd Floor, East Wing, 12 Borrett Road,
Mid Levels, Hong Kong.
Tel: 2522 4446
Email: officemanager@citykidshk.org
Website: www.citykidshk.org
Year founded: 1984
Curriculum: Early Years Foundation Stage

De la mano Spanish

Tel: 9317 7006
Email: info@delamanospanish.com
Website: www.delamanospanish.com

Fairchild Junior Academy

22/F Park Commercial Centre,
180 Tung Lo Wan Road, Tin Hau
Tel: 2898 1611
Email: info@fairchild.academy
Website: www.fairchild.academy
Year founded: 2015
Curriculum: Reggio Emilia

Foundation Global Education

13/F, Chinachem Hollywood Centre,
1 Hollywood Road, Central, Hong Kong
Tel: 3107 8810
Email: info@foundationge.com
Website: www.foundationge.com

Kaplan Language Training (HK) Ltd

General Office

4/F, Opulent Building,
402-406 Hennessy Road, Wanchai,
Hong Kong
Tel: 2359 9080

Causeway Bay Campus

G/F to 3/F, E-Tech Centre,
Nos 402-406 Hennessy Road,
Wanchai, Hong Kong
Tel: 2526 3686
Email: hkinfo@kaplan.com
Website: www.kaplan.com.hk
Year founded: 1989

Kip McGrath Education Centres

Shop B, G/F, Caineway Mansion,
132 Caine Road, Mid-levels, Hong Kong
Tel: 2291 6188
Email: enquiries@kipmcgrath.com.hk
Website: kipmcgrath.com.hk
Year founded: 1989

Le Club des cinq French Learning Centre

2F King Dao Building, 14 Burrows
Street, Wanchai
Tel: 2575 4555 / 9773 7941
Email: contact@clubdes5.hk

Mini Mandarins Learning Centre

Causeway Bay Centre

7/F., Capital Commercial Building,
26 Leighton Road, Causeway Bay
Tel: 2320 1128
Email: info@minimandarins.com

Central Centre

Room 1703 17/F Universal Trade
Centre, No. 3-5A Arbuthnot Road,
Hong Kong
Tel: 2320 5208
Email: central@minimandarins.com
Website: www.minimandarins.com
Year founded: 2014

NTK Academic Group

Main Campus

3-5/F & 7/F (Front office), Lee Garden
Five, 18 Hysan Avenue, Causeway Bay
Tel: 2577 7844
Email: enquiry@ntk.edu.hk

Kowloon Campus

2/F., the Avery, 16 Hau Wong Road,
Kowloon City, Kowloon.
Tel: 2718 3000
Email: enquiry@ntk.edu.hk
Website: www.ntk.edu.hk
Year founded: 1996
Curriculum: SAT, AP, TOEFL, IB, IELTS

PIONEERS OF THE
STORYTELLING IMAGE

venture
studios

**VENTURE STUDIOS
EXCLUSIVE OFFER!**



**CALL
NOW!
2885 6262**

**ENJOY A VENTURE PHOTOGRAPHY
EXPERIENCE FOR ONLY HK\$500**
PACKAGE INCLUDES:
- 1 HOUR PHOTO SHOOT
- 1 HOUR PHOTO REVIEW
- 1 FRAMED PHOTOGRAPH (7"X5") HANDMADE IN THE UK
(ORIGINAL PRICE \$2,500)

Terms and Conditions Apply

LONDON • HONG KONG • NEW YORK

Central Studio
Shop B, 1/F Winway Building,
50 Wellington Street, Central

Harbour City Studio
Suites 608 - 9, World Commerce Centre,
Harbour City, Kowloon

Venturephotography.com/hk venturestudioshk Venture Studios Hong Kong

THE PRIDE WE TAKE IN BRINGING YOU AN AWARD-WINNING FLIGHT EXPERIENCE

That's what makes us the world's most awarded airline



Favourite Airline Crew
KAYAK Travel Awards (Singapore) 2018



Best Cabin Service Worldwide
SmartTravelAsia (Hong Kong) 2018



Best Full Service Airline – Southeast Asia
FTE Asia Awards (UK) 2017



**SINGAPORE
AIRLINES**

A great way to fly