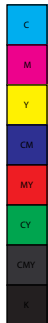


FACTS & FIGURES 2012



UNIVERSITY OF
TORONTO



Facts and Figures is prepared annually by the Office of the Assistant Vice-President, Government, Institutional and Community Relations. **Facts and Figures** provides answers to some of the most frequently asked questions about the University. It is designed and organized to serve as a useful and reliable source of reference information from year to year.

The reader of **Facts and Figures** should take care when attempting to use the enclosed information comparatively. While some definitions are common to other universities, many others are not. Our office maintains some comparative databases and has access to others. Please contact us for assistance in using **Facts and Figures** comparatively.

Each year we try to improve **Facts and Figures** to make it as useful as possible. We are always grateful for suggestions for improvement.

Facts and Figures can also be accessed on the Internet at <http://www.utoronto.ca/about-uoft/quickfacts/factsandfigures.htm>

Other official publications of the University can be found on the About U of T website:
<http://www.utoronto.ca/about-uoft/measuring-our-performance.htm>

Facts & Figures 2012 Project Manager: Xuelun Liang
Xuelun can be reached via e-mail at:
xuelun.liang@utoronto.ca.

Contributors include: Brian Armstrong, Michelle Broderick, Helen Choy, Arlene Clement, Maya Collum, Vinitha Gengatharan, Phil Harper, Jane Harrison, Rick Haywood, Lari Langford, Jason Lee, Jennifer Leigh, Maureen Lynham, Barry Murphy, Al Nausedas, Alex Nishri, Corinne Pask-Aubé, Lou Ranalli, José Sigouin, and Donna Wall.

Government, Institutional and Community Relations

Room 5, Simcoe Hall
27 King's College Circle
Toronto, Ontario
M5S 1A1
<http://www.universityrelations.utoronto.ca/qicr>

CONTENTS

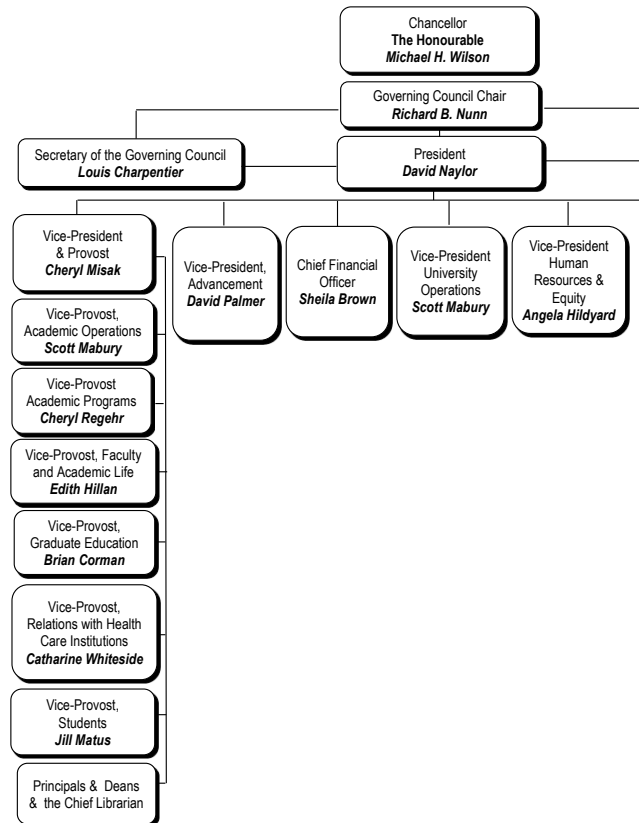
Part A General	3
1. Organization of Senior Administration	
2. Academic Divisions and Units	
3. Degrees, Diplomas and Certificates Offered by Division	
Part B Finances	15
University of Toronto Financial Statements	
1. Statement of Operations	
2. Changes in Surplus/Deficit	
3. Operating Fund Expense Summary	
4. Operating Fund: Academic Expense Summary	
5. Restricted Funds	
University of Toronto Budget Reports	
6. Expense Budget Summary	
7. Academic Costs	
Part C Research	25
1. Research Funds Awarded by Sector	
2. Research Funds Awarded by Administrative Site	
3. Academic Linkages between the University of Toronto and International Institutions	
4. Technology Transfer Activities	
Part D Students	29
1. Enrolment by Campus and Faculty/College	
2. Enrolment by Program Mix	
3. Enrolment by Age and Gender Balance	
4. International Student Enrolment by Geographic Origin	
5. International Student Enrolment by Geographic Origin: Five-Year Trend	
6. Ten-Year Enrolment Trends: All Students	
7. Gender Balance of Graduate and Undergraduate Enrolments by Field of Study	
8. Undergraduate Intake by Faculty	
9. Graduate Intake by Faculty	
10. Total Intake	
11. Degrees Awarded by Field of Study & Gender	
12. Tuition Fee Schedule for Domestic & International Students	
13. Tuition Fee Schedule for Self-Funded Programs	
Part E Graduates	51
1. Graduates by Region	
2. Number of Degree Affiliations by College or Faculty	
3. Total Annual Gifts Received	
4. Percentage of Pledge Dollars by Donor Sector	

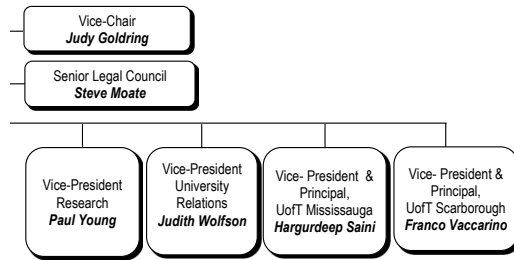
Part F Student Awards	57
1. Undergraduate Student Support : Admission Scholarships, In-Course Scholarships and Bursaries by Faculty and College	
2. OSAP and University of Toronto Advanced Planning for Students Program (UTAPS) by Faculty and College	
3. Graduate Student Support by Source	
4. Graduate Student Support by S.G.S. Division	
Part G Faculty and Administrative Staff	65
1. Distribution of Full-Time Appointed Tenured/Tenure Stream Faculty by Major Division and Main Appointment	
2. Distribution of Full-Time Tenured/Tenure Stream Faculty by Rank and Gender	
3. Age Distribution of Tenured/Tenure Stream Faculty	
4. Distribution of Full and Part-Time (>=25%) Academic Staff and Librarians by Rank and Gender	
5. All Active Faculty with Teaching/Research Responsibilities	
6. Distribution of Full and Part-Time Administrative and Union Staff	
7. Gross Operating Fund Full-Time Equivalent Staff	
Part H Library	73
1. Library Collections	
2. Number of Loans	
Part I Physical Plant	77
1. Usage of Assignable Space	
2. Number of Buildings and Square Metres	
3. Area of U of T Properties	
4. Number of Parking Spaces	
5. Number of Public Assembly Facilities	
6. Number of University of Toronto Students in Residence	
Part J Computing and Communications	83
1. Number of UTOEmail Accounts at Year End	
2. Number of Messages Delivered by UTOEmail Post Office	
3. Number of Web Transactions	
4. Institutional Internet Services - Virtual Private Network (VPN)	
5. Campus Wireless Network	
6. Usage of Electronic Student Services	

Part A General

Organization of Senior Administration	4
Academic Divisions and Units	6
Degrees, Diplomas and Certificates Offered by Division	10

ORGANIZATION OF SENIOR ADMINISTRATION
2012-13





ACADEMIC DIVISIONS AND UNITS

2012-13

Faculty of Applied Science and Engineering

Aerospace Studies, Institute for
Chemical Engineering and Applied Chemistry, Department of
Civil Engineering, Department of
Electrical and Computer Engineering, The Edward S. Rogers Sr. Department of
Engineering Science, Division of
Materials Science and Engineering, Department of
Mechanical and Industrial Engineering, Department of

John H. Daniels Faculty of Architecture, Landscape, and Design

Faculty of Arts and Science (St. George Campus)

Anthropology, Department of
Art, Department of
Astronomy & Astrophysics, Department of
Astronomy & Astrophysics, Dunlap Institute for
Cell and Systems Biology, Department of
Chemistry, Department of
Cinema Studies Institute
Classics, Department of
Comparative Literature, Centre for
Computer Science, Department of
Criminology & Sociolegal Studies, Centre for
Diaspora and Transnational Studies, Centre for
Drama, Theatre, and Performance Studies, Centre for
Earth Sciences, Department of
East Asian Studies, Department of
Ecology and Evolutionary Biology, Department of
Economics, Department of
English, Department of
Environment, School of
European, Russian and Eurasian Studies, Centre for
French, Department of
Geography, Department of
Germanic Languages & Literatures, Department of
Global Affairs, Munk School of
History, Department of
History & Philosophy of Science & Technology, Institute for the
Industrial Relations and Human Resources, Centre for
Italian Studies, Department of
Linguistics, Department of
Mathematics, Department of
Medieval Studies, Centre for
Near & Middle Eastern Civilizations, Department of
Philosophy, Department of
Physics, Department of
Political Science, Department of
Psychology, Department of
Sexual Diversity Studies, Mark S. Bonham Centre for
Slavic Languages & Literatures, Department of
Sociology, Department of

ACADEMIC DIVISIONS AND UNITS (continued)
2012-13

Faculty of Arts and Science (St. George Campus) (continued)

Spanish & Portuguese, Department of
Statistical Sciences, Department of
Study of Religion, Department for the
Theoretical Astrophysics, Canadian Institute for (CITA)
Women and Gender Studies, Institute for

Faculty of Arts and Science - Colleges (St. George Campus)

Constituent Colleges:

Innis College
New College
University College
Woodsworth College

Federated Colleges:

St. Michael's College
Trinity College
Victoria College

School of Continuing Studies

Faculty of Dentistry

Faculty of Forestry

Faculty of Information

Faculty of Kinesiology and Physical Education

Faculty of Law

Joseph L. Rotman School of Management

Faculty of Medicine

Anesthesia, Department of
Biochemistry, Department of
Cellular & Biomolecular Research, The Terrence Donnelly Centre for
Family and Community Medicine, Department of
Health Policy, Management and Evaluation, Institute of
Immunology, Department of
Laboratory Medicine and Pathobiology, Department of
Medical Biophysics, Department of
Medical Imaging, Department of
Medical Research, The Banting and Best Department of
Medical Science, Institute of
Medicine, Department of
Molecular Genetics, Department of
Nutritional Sciences, Department of
Obstetrics and Gynaecology, Department of
Occupational Science and Occupational Therapy, Department of
Ophthalmology and Vision Sciences, Department of
Otolaryngology - Head and Neck Surgery, Department of

ACADEMIC DIVISIONS AND UNITS (continued)
2012-13

Faculty of Medicine (continued)

Paediatrics, Department of
Pharmacology and Toxicology, Department of
Physical Therapy, Department of
Physiology, Department of
Psychiatry, Department of
Radiation Oncology, Department of
Rehabilitation Sciences, The Graduate Department of
Speech-Language Pathology, Department of
Surgery, Department of

Faculty of Music

Lawrence S. Bloomberg Faculty of Nursing

Ontario Institute for Studies in Education (OISE)

Child Study, Dr. Eric Jackman Institute of
Applied Psychology and Human Development, Department of
Curriculum, Teaching and Learning, Department of
Humanities, Social Sciences and Social Justice Education,
Department of
Leadership, Higher and Adult Education, Department of

Leslie L. Dan Faculty of Pharmacy

Dalla Lana School of Public Health

Factor-Inwentash Faculty of Social Work

University of Toronto Mississauga

Anthropology, Department of
Biology, Department of
Chemical and Physical Sciences, Department of
Communication, Culture and Information Technology, Institute of
Economics, Department of
English and Drama, Department of
Geography, Department of
Historical Studies, Department of
Language Studies, Department of
Management, Department of
Mathematical and Computational Sciences, Department of
Philosophy, Department of
Political Science, Department of
Professional Graduate Programs Centre
Psychology, Department of
Sociology, Department of
Visual Studies, Department of

ACADEMIC DIVISIONS AND UNITS (Continued)
2012-13

University of Toronto Scarborough

Arts, Culture, and Media, Department of
Anthropology, Department of
Biological Sciences, Department of
Computer & Mathematical Sciences, Department of
Critical Development Studies, Centre for
English, Department of
French and Linguistics, Centre for
Historical and Cultural Studies, Department of
Human Geography, Department of
Management, Department of
Philosophy, Department of
Physical & Environmental Sciences, Department of
Political Science, Department of
Psychology, Department of
Sociology, Department of

Multi-Divisional Centres and Institutes

Biomaterials and Biomedical Engineering, Institute of
Public Policy and Governance, School of

Notes:

Units are defined as Departments and Extra-Departmental Units [EDU] A and B

(An EDU:A may enrol students and has faculty appointing rights.

An EDU:B may enrol students and has no (or limited) faculty appointment rights.)

DEGREES, DIPLOMAS AND CERTIFICATES OFFERED BY DIVISION

2012-13

Faculty of Applied Science and Engineering:

Undergraduate

Bachelor of Applied Science	B.A.Sc.
Bachelor of Applied Science in Engineering Science	B.A.Sc. In Engineering Science

Graduate

Master of Applied Science	M.A.Sc.
Master of Engineering	M.Eng.
Master of Engineering in Design and Manufacturing	M.Eng.D.M.
Master of Health Science	M.H.Sc.
Doctor of Philosophy	Ph.D.

John H. Daniels Faculty of Architecture, Landscape, and Design:

Undergraduate

Honours Bachelor of Arts	B.A., Hons.
--------------------------	-------------

Graduate

Master of Architecture	M.Arch.
Master of Landscape Architecture	M.L.A.
Master of Urban Design	M.U.D.

Faculty of Arts and Science, St. George Campus:

Undergraduate

Honours Bachelor of Arts	B.A., Hons.
Honours Bachelor of Science	B.Sc., Hons.
Bachelor of Commerce	B.Com.

Graduate

Master of Arts	M.A.
Master of Science	M.Sc.
Master of Financial Economics (with Rotman School of Management)	M.F.E.
Master of Global Affairs	M.G.A.
Master of Industrial Relations and Human Resources	M.I.R.H.R.
Master of Mathematical Finance	M.M.F.
Master of Public Policy	M.P.P.
Master of Science in Applied Computing	M.Sc.A.C.
Master of Science in Planning	M.Sc.Pl.
Master of Urban Design Studies	M.U.D.S.
Master of Visual Studies	M.V.S.
Doctor of Philosophy	Ph.D.

Faculty of Dentistry:

Undergraduate

Doctor of Dental Surgery	D.D.S.
--------------------------	--------

Graduate

M.Sc./Dental Specialty Program	M.Sc.
Doctor of Philosophy	Ph.D.

Faculty of Forestry:

Graduate

Master of Forest Conservation	M.F.C.
Master of Science in Forestry	M.Sc.F.
Doctor of Philosophy	Ph.D.

DEGREES, DIPLOMAS AND CERTIFICATES OFFERED BY DIVISION

(continued)

2012-13

Faculty of Information:

Undergraduate

Honours Bachelor of Arts (with U of T Mississauga) B.A., Hons.

Graduate

Master of Information M.I.

Master of Museum Studies M.M.St.

Doctor of Philosophy Ph.D.

Graduate Diploma of Advanced Study in Information Studies G.Dip.I.St

Faculty of Kinesiology and Physical Education:

Undergraduate

Bachelor of Physical and Health Education B.P.H.E.

Bachelor of Kinesiology B.Kin.

Graduate

Master of Science M.Sc.

Doctor of Philosophy Ph.D.

Faculty of Law:

Undergraduate

Juris Doctor J.D.

Graduate

Global Professional Master of Laws G.P.L.L.M.

Master of Laws LL.M.

Master of Studies in Law M.S.L.

Doctor of Juridical Science S.J.D.

Joseph L. Rotman School of Management:

Graduate

Omnium Global Executive Master of Business Administration E.M.B.A.

Master of Business Administration M.B.A.

Master of Finance M.F.

Master of Financial Economics (with Arts & Science) M.F.E.

Doctor of Philosophy Ph.D.

Faculty of Medicine:

Undergraduate

Doctor of Medicine M.D.

Bachelor of Science, Medical Radiation Sciences B.Sc.Med.Rad.Sc.

Bachelor of Science, Physician Assistant B.Sc.P.A.

DEGREES, DIPLOMAS AND CERTIFICATES OFFERED BY DIVISION

(continued)

2012-13

Faculty of Medicine (continued):**Graduate**

Master of Science	M.Sc.
Master of Science in Biomedical Communications	M.Sc.BMC
Master of Health Informatics	M.H.I.
Master of Health Science	M.H.Sc.
Master of Management of Innovation	M.M.I.
Master of Public Health	M.P.H.
Master of Science in Community Health	M.Sc.C.H.
Master of Science in Occupational Therapy	M.Sc.O.T.
Master of Science in Physical Therapy	M.Sc.P.T.
Doctor of Philosophy	Ph.D.
Diploma in Community Health	Dip.C.H.

Post Doctoral

Diploma in Child Psychiatry	D.Child Psych.
Diploma in Clinical Chemistry	D.Cl.Chem.
Diploma in Industrial Health	D.I.H.

Faculty of Music:**Undergraduate**

Bachelor of Music	B.Mus.
Bachelor of Music in Performance	Mus Bac.Perf.
Advanced Certificate in Performance	Adv.Cert.Perf.
Artist Diploma	Art.Dip.Mus.
Diploma in Operatic Performance	Dip.Op.Perf.

Graduate

Master of Music	M.Mus.
Master of Arts	M.A.
Doctor of Musical Arts	D.M.A.
Doctor of Philosophy	Ph.D.

Lawrence S. Bloomberg Faculty of Nursing:**Undergraduate**

Bachelor of Science in Nursing	B.Sc.N.
--------------------------------	---------

Graduate

Master of Nursing	M.N.
Doctor of Philosophy	Ph.D.
Graduate Diploma in Anesthesia Care	G.Dip.NPAC.
Post Masters Nurse Practitioner Diploma	Dip.N.P.

DEGREES, DIPLOMAS AND CERTIFICATES OFFERED BY DIVISION
 (continued)
 2012-13

Ontario Institute for Studies in Education (OISE):

Undergraduate

Bachelor of Education (consecutive)	B.Ed.
Diploma in Technological Education	Dip. T.Ed.

Graduate

Master of Education	M.Ed.
Master of Teaching	M.T.
Master of Arts	M.A.
Doctor of Education	Ed.D.
Doctor of Philosophy	Ph.D.

Leslie L. Dan Faculty of Pharmacy:

Undergraduate

Bachelor of Science in Pharmacy	B.Sc.Pharm.
Doctor of Pharmacy	Pharm.D.

Graduate

Master of Science	M.Sc.
Doctor of Philosophy	Ph.D.

School of Public Policy and Governance:

Master of Public Policy	M.P.P.
-------------------------	--------

Factor-Inwentash Faculty of Social Work:

Graduate

Master of Social Work	M.S.W.
Doctor of Philosophy	Ph.D.
Diploma in Social Service Administration	D.S.S.A.

University of Toronto Mississauga:

Undergraduate

Honours Bachelor of Arts	B.A., Hons.
Honours Bachelor of Science	B.Sc., Hons.
Bachelor of Business Administration	B.B.A.
Bachelor of Commerce	B.Com.

DEGREES, DIPLOMAS AND CERTIFICATES OFFERED BY DIVISION

(continued)

2012-13

University of Toronto Mississauga (continued):**Graduate**

Master of Arts	M.A.
Master of Science	M.Sc.
Doctor of Philosophy	Ph.D.
Master of Biotechnology	M.Biotech
Master of Management & Professional Accounting	M.M.P.A.
Diploma in Investigative & Forensic Accounting	D.I.F.A.

University of Toronto Scarborough:**Undergraduate**

Honours Bachelor of Arts	B.A., Hons.
Honours Bachelor of Science	B.Sc., Hons.
Bachelor of Business Administration	B.B.A.
Certificate in Business	Cert.Bus.

Graduate

Master of Arts	M.A.
Master of Science	M.Sc.
Masters in Environmental Science	M.Env.Sc.
Doctor of Philosophy	Ph.D.

Woodsworth College:**Undergraduate**

Certificate in Human Resource Management	C.H.R.M.
Certificate in Teaching English to Speakers of Other Languages	C.T.E.S.O.L.

COMBINED PROGRAMS:

Master of Business Administration and Jeffrey Skoll Bachelor of Applied Science	B.A.Sc./M.B.A.
Master of Health Science in Health Administration and Master of Nursing	M.H.Sc./M.N.
Master of Health Science in Health Administration and Master of Social Work	M.H.Sc./M.S.W.
Doctor of Medicine and Doctor of Philosophy	M.D./Ph.D.
Juris Doctor and Certificate in Environmental Studies	J.D./Certificate in Environmental Studies
Juris Doctor and Master of Arts (Criminology, Economics, English, European, Russian and Eurasian Studies)	J.D./M.A.
Juris Doctor and Master of Business Administration	J.D./M.B.A.
Juris Doctor and Master of Global Affairs	J.D./M.G.A.
Juris Doctor and Master of Information	J.D./M.I.
Juris Doctor and Master of Social Work	J.D./M.S.W.
Juris Doctor and Doctor of Philosophy (Economics, Philosophy, Political Science) combined programs	J.D./Ph.D.

CONCURRENT TEACHER EDUCATION PROGRAMS:

Bachelor of Arts and Bachelor of Education	B.A., Hons./B.Ed.
Bachelor of Science and Bachelor of Education	B.Sc., Hons./B.Ed.
Bachelor of Music and Bachelor of Education	B.Mus./B.Ed.
Bachelor of Physical Education & Health and Bachelor of Education	B.P.H.E./B.Ed.

Part B Finances

University of Toronto Financial Statements	
Statement of Operations	16
Changes in Surplus/Deficit	18
Operating Fund: Expense Summary	19
Operating Fund: Academic Expense Summary	20
Restricted Funds	21
University of Toronto Budget Reports	
Expense Budget Summary	22
Academic Costs	23

UNIVERSITY OF TORONTO FINANCIAL STATEMENTS 2011-12

STATEMENT OF OPERATIONS

for the year ended April 30, 2012.

(with comparative figures for the year ended April 30, 2011)

(millions of dollars)

	OPERATING FUND	ANCILLARY OPERATIONS	CAPITAL FUND	RESTRICTED FUNDS	TOTAL 2012	TOTAL 2011
Revenues						
Government Grants for general operations	702.2				702.2	691.0
Student Fees	837.8	7.3	2.3		847.4	764.3
Government & other grants & contracts for restricted purposes		0.4	60.0	359.9	420.3	406.4
Sales, services and sundry income	124.7	145.3	1.3		271.3	260.1
Investment income						
Endowments	49.8			25.5	75.3	91.7
Other	24.2	0.5	1.0	1.3	27.0	43.9
Donations		0.7	6.4	52.8	59.9	63.7
Total Revenues	1,738.7	154.2	71.0	439.5	2,403.4	2,321.1

UNIVERSITY OF TORONTO FINANCIAL STATEMENTS 2011-12
STATEMENT OF OPERATIONS (continued)
for the year ended April 30, 2012.
 (with comparative figures for the year ended April 30, 2011)

(millions of dollars)

	OPERATING FUND	ANCILLARY OPERATIONS	CAPITAL FUND	RESTRICTED FUNDS	TOTAL 2012	TOTAL 2011
Expenses						
Salaries	902.4	6.0		217.6	1,126.0	1,082.0
Benefits	389.0	1.7		19.8	410.5	377.9
Materials and supplies	82.0	1.7		138.5	222.2	206.3
Scholarships, fellowships and bursaries	150.8				150.8	141.4
Amortization of capital assets	10.9	12.8	112.7	0.6	137.0	132.1
Cost of sales and services			84.6		84.6	80.4
Utilities	42.2	8.4		2.4	53.0	51.0
Repairs and maintenance	52.6	16.5	3.6	9.0	81.7	79.8
Travel and conferences	22.5			21.1	43.6	40.9
Interest on long-term debt	16.7	16.3		1.3	34.3	32.6
External contracted services	25.3			21.2	46.5	49.6
Telecommunications	10.6			1.3	11.9	11.2
Other	19.2		3.6	13.0	35.8	28.7
Total Expenses	1,724.2	148.0	119.9	445.8	2,437.9	2,313.9

UNIVERSITY OF TORONTO FINANCIAL STATEMENTS 2011-12
CHANGES IN SURPLUS/DEFICIT

for the year ended April 30, 2012.

(with comparative figures for the year ended April 30, 2011)

(millions of dollars)

	OPERATING FUND	ANCILLARY OPERATIONS	CAPITAL FUND	RESTRICTED FUNDS	TOTAL 2012	TOTAL 2011
Net Income (loss)	14.5	6.2	(48.9)	(6.3)	(34.5)	7.2
Net transfers between funds	(21.2)	2.7	14.7	3.8		
Transfer of capital assets funding	(62.3)		62.3			
Unrealized gain (loss) on swap contracts						
Change in internally restricted	48.9	(1.0)	17.7	(1.8)	63.8	45.8
Change in investments in capital assets		25.8	(20.7)		5.1	(27.1)
Transfers of donations to endowments				(3.3)	(3.3)	(2.1)
Transfer to internally restricted endowments				7.6	7.6	(10.9)
Net change in unrestricted surplus (deficit) for the year	(20.1)	33.7	25.1		38.7	12.9
Unrestricted deficit, beginning of year	5.4	(115.4)	(63.9)		(173.9)	(186.8)
Unrestricted surplus (deficit), end of year	(14.7)	(81.7)	(38.8)		(135.2)	(173.9)

UNIVERSITY OF TORONTO FINANCIAL STATEMENTS 2011-12

OPERATING FUND: EXPENSE SUMMARY

Expense Summary for the year ended April 30, 2012
(with comparative totals for the year ended April 30, 2011)

(thousands of dollars)

	ACADEMIC SALARIES	OTHER SALARIES	STAFF BENEFITS	TOTAL SALARIES AND BENEFITS	SUPPLIES AND OTHER EXPENSES	SCHOLARSHIPS FELLOWSHIPS BURSARIES	TOTAL	ELIMINATIONS AND RECLASS- IFICATIONS*	TOTAL DIVISIONAL EXPENSE
Academic	499,480	223,983	154,448	877,910	172,273		1,050,183	96,611	1,146,794
Academic Services	12,646	24,364	8,350	45,360	41,152		86,512	(2,141)	84,371
Campus & Student Services		25,627	5,161	30,788	11,649		42,437	4,944	47,380
Student Assistance Operation & Maintenance of Physical Plant		5,175	665	5,840	795	150,558	157,192	318	157,511
Administration		46,425	10,892	57,316	152,359		209,675	(63,191)	146,484
Interest		67,313	15,342	82,655	28,529		111,184	8,966	120,150
Renovations and Alterations					13,268		13,268	1,652	14,920
Amortization								10,868	10,868
Other Expenditures		23,475	3,801	27,276	24,725		52,001	(10,766)	41,235
Sub-Total	512,125	416,361	198,658	1,127,145	444,750	150,558	1,722,453	63,945	1,786,398
Eliminations	(20,363)	(5,758)	190,362	164,240	(100,511)	216	63,945		
Total Expenses	491,762	410,603	389,020	1,291,385	344,239	150,774	1,786,398		1,786,398
2010-11 Comparatives	468,922	397,400	357,556	1,223,978	317,840	141,406	1,683,124		
Percentage Change	4.9%	3.3%	8.8%	5.5%	8.3%	6.6%	6.1%		

*Eliminations and Reclassifications are external recovery of salaries and benefits as well as internal departmental changes between different functional groups.

UNIVERSITY OF TORONTO FINANCIAL STATEMENTS 2011-12
OPERATING FUND: ACADEMIC EXPENSE SUMMARY

For the year ending April 30, 2012

(with comparative totals for the year ended April 30, 2011)

(thousands of dollars)

	NET EXPENSES 2011-12	NET EXPENSES 2010-11
Arts & Science, Colleges & Schools:		
Faculty of Arts & Science	\$247,770	\$243,493
Federated Colleges Block Grant	14,029	13,907
Graduate Centres & Institutes	6,381	6,672
Mississauga, University of Toronto	77,585	72,606
Scarborough, University of Toronto	75,549	75,904
School of Continuing Studies	19,903	17,351
School of Graduate Studies	5,214	5,168
Transitional Year Program	1,562	1,601
Health Science Faculties/Schools:		
Faculty of Dentistry	37,136	35,228
Faculty of Medicine	149,618	144,831
Faculty of Nursing	10,429	12,773
Faculty of Pharmacy	15,559	14,648
Faculty of Kinesiology & Physical Education	27,028	25,936
Other Professional Faculties:		
Faculty of Applied Science & Engineering	82,802	80,606
Faculty of Architecture, Landscape, and Design	8,674	7,865
Faculty of Forestry	3,103	3,020
Faculty of Information	8,324	8,190
Faculty of Law	19,480	18,955
Management, Rotman School of	78,287	71,124
Faculty of Music	14,117	12,937
OISE/UT (includes University of Toronto Schools)	60,037	59,278
Faculty of Social Work	7,092	6,479
Other Academic	177,114	151,240
Total Academic Expense	\$1,146,794	\$1,089,812

UNIVERSITY OF TORONTO FINANCIAL STATEMENTS 2011-12
RESTRICTED FUNDS

Endowments and Expendable Funds at Fair Value

for the year ending April 30, 2012 (with comparative figures for the year ended April 30, 2011)

(thousands of dollars)

	ENDOWMENT FUNDS		EXPENDABLE FUNDS	
	2012	2011	2012	2011
l'Anson Fund	\$2,357	\$2,440	\$793	\$671
Connaught Funds	75,814	78,496	7,776	5,963
Departmental Funds	186,971	190,290	151,802	139,913
Faculty Endowment Funds	460,440	464,559	10,519	10,589
Miscellaneous Funds	30,086	30,514	18,329	20,934
Ontario Student Opportunity Trust Funds Phase 1	266,618	276,012	22,870	20,958
Ontario Student Opportunity Trust Funds Phase 2	32,053	33,196	3,014	2,627
Ontario Trust for Student Support	58,118	54,053	3,590	2,886
Research Funds	107,272	111,037	188,656	201,908
Student Aid Funds	298,386	298,796	35,389	33,609
Total University of Toronto	\$1,518,115	\$1,539,393	\$442,738	\$440,058
Affiliated Universities	496,403	402,985	na	na
Total	\$2,014,518	\$1,942,378	na	na

UNIVERSITY OF TORONTO BUDGET REPORTS
EXPENSE BUDGET SUMMARY

*Time Series Comparison of Major Budget Categories, based on net expense budgets
 2010-11 to 2012-13*
 (Millions of dollars)

	2012-13	PERCENT INCREASE OVER PRIOR YEAR	2011-12	PERCENT INCREASE OVER PRIOR YEAR	2010-11
Academic	984.2	6%	931.2	6%	875.8
Academic Services	68.6	4%	65.9	3%	63.9
Student Services	4.6	52%	3.0	52%	2.0
Student Assistance	108.3	10%	98.9	9%	90.4
Facilities & Services	82.3	5%	78.4	5%	74.6
Utilities	54.4	1%	53.9	-1%	54.7
Administration	146.4	4%	141.4	10%	128.9
General University Expense	118.8	22%	97.5	35%	72.1
Municipal Taxes	5.3	2%	5.2	2%	5.1
Total Expense Budget Summary	1,572.8	7%	1,475.3	8%	1,367.6
Administrative costs as % of Total Costs	9%		10%		9%
Facilities & Services costs as % of Total Costs	5%		5%		5%
General University Costs as % of Total Costs	8%		7%		5%

UNIVERSITY OF TORONTO BUDGET REPORTS

ACADEMIC COSTS

Time Series Comparison of Major Academic Costs, based on Net Expense Budgets

2010-11 to 2012-13

(Millions of dollars)

	2012-13	PERCENT OF BUDGET	PERCENT INCREASE OVER PRIOR YEAR	2011-12	PERCENT OF BUDGET	PERCENT INCREASE OVER PRIOR YEAR	2010-11	PERCENT OF BUDGET
Gross Expense Budget	1,332.4			1,281.7			1,218.1	
Recoveries	(196.1)			(190.7)			(192.1)	
Divisional Income	(152.2)			(159.8)			(150.2)	
Net Expense Budget	984.2		6%	931.2		6%	875.8	
Arts & Science, Colleges & Schools	475.8	48%	8%	439.5	47%	6%	413.7	47%
Health Sciences	163.5	17%	7%	153.4	16%	10%	139.2	16%
Other Professional Faculties	249.1	25%	5%	237.1	25%	5%	225.2	26%
Other Academic Costs	95.7	10%	-5%	101.2	11%	4%	97.7	11%
Net Expense Budget	984.2	100%		931.2	100%		875.8	100%
Instructional Salaries	590.2	44%	3%	573.7	45%	5%	548.4	45%
Other Salaries & Wages	198.1	15%	1%	196.6	15%	4%	189.6	16%
Benefits	171.1	13%	2%	167.0	13%	6%	157.0	13%
Supplies & Services	310.4	23%	8%	288.0	22%	7%	269.6	22%
Student Awards	62.5	5%	11%	56.4	4%	6%	53.4	4%
Gross Expense Budget	1,332.4	100%		1,281.7	100%		1,218.1	100%

Part C Research

Research Funds Awarded by Sector	26
Research Funds Awarded by Administrative Site	26
Academic Linkages between the University of Toronto and International Institutions	27
Technology Transfer Activities	28

RESEARCH FUNDS AWARDED BY SECTOR
(thousands of dollars)

	2008-09	2009-10	2010-11
Federal Granting Councils	\$338,555	\$330,991	\$347,579
Other Federal	93,795	135,319	153,125
Government of Ontario	163,994	152,730	185,580
Other Government Corporations	766	1,105	2,085
International	66,121	57,552	79,235
Not-for-Profit	23,182	23,521	29,625
Inter-institutional Collaboration	141,961	169,403	209,953
	71,650	64,664	74,745
Grand Total	\$900,024	\$935,285	\$1,081,927

Note: All indirect costs are included.

RESEARCH FUNDS AWARDED BY ADMINISTRATIVE SITE
(thousands of dollars)

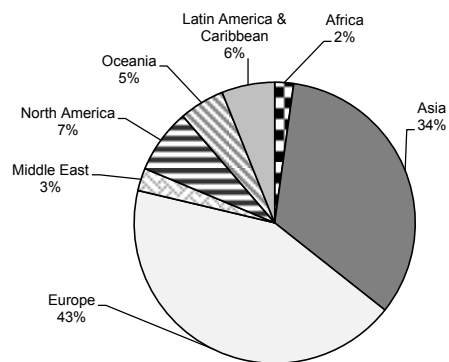
	2008-09	2009-10	2010-11
University of Toronto	\$435,173	\$445,886	\$460,528
Partner Hospitals	464,851	489,399	621,400
Grand Total	\$900,024	\$935,285	\$1,081,928

Note: All indirect costs are included.

ACADEMIC LINKAGES BETWEEN THE UNIVERSITY OF TORONTO AND INTERNATIONAL INSTITUTIONS

December 2012

REGION	NUMBER OF MOUS*
Africa	5
Asia	77
Europe	99
Middle East	6
North America	17
Oceania	12
Latin America & Caribbean	14
Total	230



*Memoranda of Understanding (MOUs) are formal arrangements between institutions which outline how they plan to cooperate over a specified period of time (normally, five years).

The areas included in MOUs are:

- joint research activities,
- participation in each institution's seminars and academic meetings,
- exchange of academic materials,
- short-term academic programs, and
- exchange of students.

TECHNOLOGY TRANSFER ACTIVITIES**DISCLOSURE ACTIVITY**

	2008-09	2009-10	2010-11
Number of UofT Inventions* Disclosed	148	136	192

COMMERCIALIZATION ACTIVITY

	2008-09	2009-10	2010-11
Number of New License Agreements Signed	21	25	20
Gross Invention Revenue**	8,753,460	3,027,017	3,229,626
New Start-up Companies	7	18	23

* Includes copyright disclosures.

** Includes revenue paid to Inventors and other institutions

All figures exclude affiliated hospitals.

Data as at August 24, 2012

Part D Students

Enrolment by Campus and Faculty/College	30
Enrolment by Program Mix	32
Enrolment by Age and Gender Balance	33
International Student Enrolment by Geographic Origin	34
International Student Enrolment by Geographic Origin: Five-Year Trend	36
Ten-Year Enrolment Trends: All Students	39
Gender Balance of Graduate and Undergraduate Enrolments by Field of Study	40
Undergraduate Intake by Faculty	41
Graduate Intake by Faculty	42
Total Intake	43
Degrees Awarded by Field of Study and Gender	44
Tuition Fee Schedule for Domestic and International Students	45
Tuition Fee Schedule for Self-Funded Programs	50

ENROLMENT BY CAMPUS AND FACULTY/COLLEGE

November 1, 2012

FACULTY/COLLEGE BY CAMPUS	UNDERGRADUATE STUDENTS			GRADUATE STUDENTS			ALL STUDENTS		FTE STUDENTS		
	Full-Time	Part-Time	Percent Female	Full-Time	Part-Time	Percent Female	Total	Percent Female	Under-graduate	Graduate	Total
St. George Campus											
Applied Science & Engineering	4,575	839	24%	1,684	268	26%	7,366	24%	4,820	1,764	6,584
Architecture Landscape & Design	311	11	62%	361	12	53%	695	51%	285	365	649
Arts & Science	23,934	2,873	59%	3,515	135	48%	30,457	58%	22,473	3,556	26,029
Innis	1,785	127	56%	0	0	---	1,912	56%	1,656	0	1,656
New	4,324	441	55%	0	0	---	4,765	55%	4,003	0	4,003
St. Michael's	4,442	318	58%	0	0	---	4,760	58%	4,104	0	4,104
Trinity	1,729	102	62%	0	0	---	1,831	62%	1,667	0	1,667
University	3,930	316	60%	0	0	---	4,246	60%	3,686	0	3,686
Victoria	3,209	234	68%	0	0	---	3,443	68%	3,042	0	3,042
Woodsworth	4,515	1,335	57%	0	0	---	5,850	57%	4,316	0	4,316
Dentistry	327	0	57%	132	1	56%	460	61%	327	132	459
Forestry	0	0	---	97	5	53%	102	55%	0	99	99
Information	0	0	---	441	133	72%	574	73%	0	481	481
Kinesiology & Physical Ed.	846	28	55%	64	3	52%	941	55%	773	65	838
Law	607	43	48%	125	6	57%	781	48%	649	127	775
Management	0	0	---	1,227	6	31%	1,233	30%	0	1,232	1,232
Medicine	4,213	5	50%	2,811	200	64%	7,229	56%	4,237	2,881	7,117
Music	572	12	53%	259	4	55%	847	54%	589	260	849
Nursing	338	0	89%	284	33	91%	655	91%	338	294	632

ENROLMENT BY CAMPUS AND FACULTY/COLLEGE (continued)

November 1, 2012

FACULTY/COLLEGE BY CAMPUS	UNDERGRADUATE STUDENTS			GRADUATE STUDENTS			ALL STUDENTS		FTE STUDENTS		
	Full-Time	Part-Time	Percent Female	Full-Time	Part-Time	Percent Female	Total	Percent Female	Under-graduate	Graduate	Total
St. George (continued)											
OISE/UT	1287	29	68%	1,431	733	77%	3,480	75%	1,036	1,651	2,686
Pharmacy	1037	15	60%	115	12	61%	1,179	59%	1,073	119	1,191
Social Work	0	0	---	427	34	91%	461	87%	0	439	439
Transitional Year Program	65	269	69%	0	0	---	334	65%	128	0	128
Woodsworth Certificates, Diplomas	42	69	76%	0	0	---	111	72%	70	0	70
Total St. George	38,154	4,193	56%	12,973	1,585	55%	56,905	54%	36,795	13,464	50,259
U of T Mississauga											
Arts & Science	11079	972	59%	202	1	59%	12,254	59%	10,059	202	10,261
Medicine	107	0	69%	54	0	69%	161	68%	107	54	161
Prof. Grad. Prog. Centre	0	0	---	232	34	66%	266	66%	0	242	242
Total U of T Mississauga	11,186	972	59%	488	35	61%	12,681	59%	10,166	499	10,665
U of T Scarborough											
Arts & Science	10075	1,032	59%	108	1	52%	11,216	59%	9,196	108	9,305
Graduate, all other faculties	0	0	---	77	20	62%	97	62%	0	83	83
Total U of T Scarborough	10,075	1,032	59%	185	21	57%	11,313	59%	9,196	191	9,388
Grand Total	59,415	6,197	56%	13,646	1,641	56%	80,899	56%	56,157	14,154	70,311

Note: Excludes 734 FTE students in the Toronto School of Theology.

ENROLMENT BY PROGRAM MIX AND DEGREE TYPE

November 1, 2012

	HEADCOUNT	FTE
Undergraduate First Entry		
Undergraduate Degree	54,523	46,542
Undergraduate Certificates	24	23
Undergraduate Special Students	1,875	803
Total Undergraduate First entry	56,422	47,368
Undergraduate Professional		
Undergraduate Degree	5,946	5,614
Dental, Medical & Pharmacy Residents	3,037	3,037
Undergraduate Certificates	177	110
Undergraduate Special Students	30	28
Total Undergraduate Professional	9,190	8,789
Graduate Doctoral Stream		
Doctoral	5,927	5,852
Masters	2,801	2,655
Graduate Special Students	38	31
Total Graduate Doctoral Stream	8,766	8,539
Graduate Professional and Diploma		
Masters	6,369	5,534
Graduate Diplomas	80	32
Graduate Special Students	72	50
Total Graduate Professional & Diploma	6,521	5,615
Total	80,899	70,311

Note: Excludes 734 FTE students in the Toronto School of Theology.

ENROLMENT BY AGE AND GENDER BALANCE

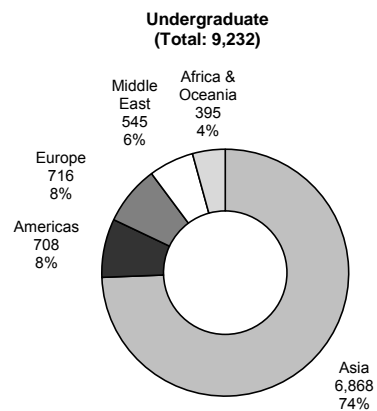
November 1, 2001 vs. November 1, 2012

	2002			2012			
	Male	Female	Total	Male	Female	Undisclosed	Total
Full-Time Undergraduate							
Number	16,426	21,489	37,915	26,011	33,391	13	59,415
Percent	43.3%	56.7%	100.0%	43.8%	56.2%	0.0%	100.0%
Median Age	21.3	21.2	21.2	21.0	20.8	23.4	20.9
Full-Time Graduate							
Number	4,150	4,912	9,062	6,257	7,383	6	13,646
Percent	45.8%	54.2%	100.0%	45.9%	54.1%	0.0%	100.0%
Median Age	28.8	28.2	28.5	27.7	27.3	24.2	27.5
Part-Time Undergraduate							
Number	5,103	7,385	12,488	2,998	3,186	13	6,197
Percent	40.9%	59.1%	100.0%	48.4%	51.4%	0.2%	100.0%
Median Age	23.8	25.4	24.6	22.9	23.2	17.0	23.1
Part-Time Graduate							
Number	944	1,591	2,535	553	1,086	2	1,641
Percent	37.2%	62.8%	100.0%	33.7%	66.2%	0.1%	100.0%
Median Age	33.4	34.9	34.3	31.3	33.7	37.2	32.9

Note: Excludes Toronto School of Theology

INTERNATIONAL STUDENT ENROLMENT BY GEOGRAPHIC ORIGIN

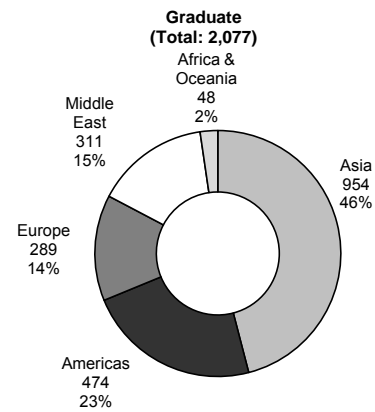
November 1, 2012



Top 15 Countries		
Country	Count	% of Undergraduate
China (People's Republic)	4,476	48.5%
South Korea	632	6.8%
India	343	3.7%
United States	302	3.3%
Hong Kong	279	3.0%
Malaysia	218	2.4%
Pakistan	196	2.1%
Saudi Arabia	166	1.8%
United Kingdom	156	1.7%
Japan	155	1.7%
Nigeria	136	1.5%
Brazil	114	1.2%
Taiwan	112	1.2%
Bangladesh	107	1.2%
Australia	84	0.9%

Note: In Fall 2012, the largest percentage of undergraduate international students were from China (48.5%) followed by South Korea (6.8%).

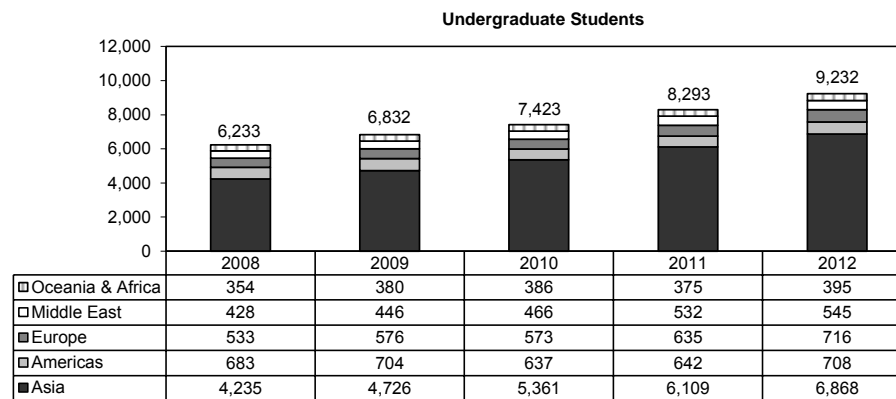
INTERNATIONAL STUDENT ENROLMENT BY GEOGRAPHIC ORIGIN (continued)
 November 1, 2012



Top 15 Countries		
Country	Count	% of Graduate
China (People's Republic)	558	26.9%
United States	346	16.7%
India	204	9.8%
Iran	157	7.6%
Germany	66	3.2%
Mexico	40	1.9%
South Korea	38	1.8%
United Kingdom	33	1.6%
Egypt	32	1.5%
Turkey	32	1.5%
Israel	31	1.5%
Japan	28	1.3%
Saudi Arabia	27	1.3%
Colombia	26	1.3%
Taiwan	26	1.3%

Note: In Fall 2012, the largest percentage of graduate international students were from the China (26.9%) followed by U.S.A. (16.7%).

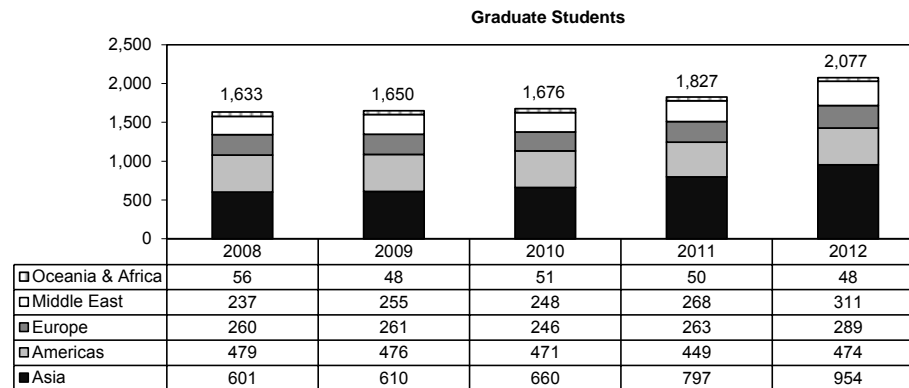
INTERNATIONAL STUDENT ENROLMENT: FIVE-YEAR TREND
November 1, 2008 to November 1, 2012



Notes:

1. In Fall 2008, the largest percentage of undergraduate international students were from China including Hong Kong (34.3%) followed by the South Korea (11.7%).
2. In Fall 2012, the largest percentage of undergraduate international students were from China excluding Hong Kong (48.5%) followed by South Korea (6.8%).

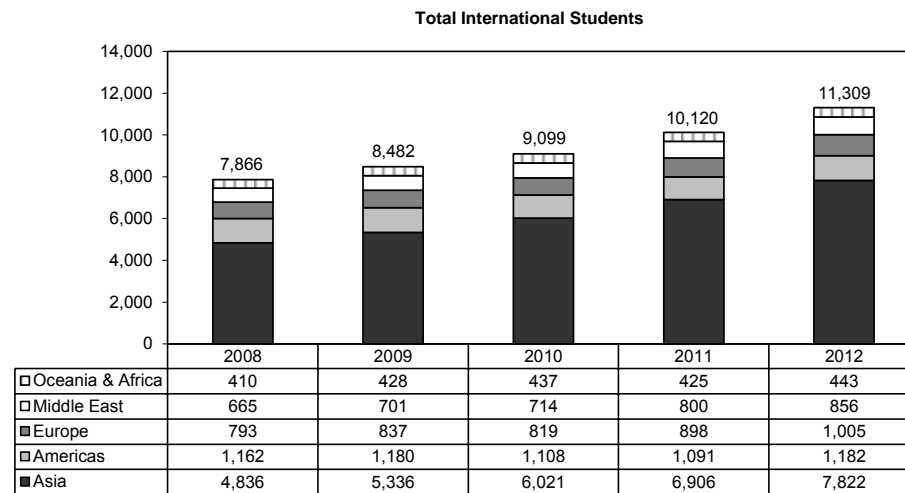
INTERNATIONAL STUDENT ENROLMENT: FIVE-YEAR TREND (continued)
November 1, 2008 to November 1, 2012



Notes:

1. In Fall 2008, the largest percentage of graduate international students were from USA (21.2%) followed by China including Hong Kong (16.2%) .
2. In Fall 2012, the largest percentage of graduate international students were from the China (26.9%) excluding Hong Kong followed by USA (16.7%).

INTERNATIONAL STUDENT ENROLMENT: FIVE-YEAR TREND (continued)
November 1, 2008 to November 1, 2012



Note: Includes both degree seeking and non-degree seeking students.

TEN-YEAR ENROLMENT TRENDS, ALL STUDENTS

November 1, 2003 - November 1, 2012

	TOTAL STUDENTS*				INTERNATIONAL STUDENTS			
	Undergraduate		Graduate		Undergraduate		Graduate	
	Total	% Female	Total	% Female	Total	% Female	Total	% Female
2003	55,369	57.9%	11,928	55.9%	3,535	49.9%	1,569	41.9%
2004	55,624	56.9%	12,068	55.4%	4,318	49.3%	1,628	41.6%
2005	58,182	56.5%	11,961	55.8%	4,982	49.1%	1,659	42.4%
2006	58,915	56.1%	12,287	56.5%	5,312	48.8%	1,753	43.4%
2007	59,508	55.5%	13,508	56.7%	5,655	49.3%	1,725	42.0%
2008	59,794	55.4%	13,891	57.2%	6,233	49.3%	1,633	42.1%
2009	61,632	55.4%	14,476	56.7%	6,832	49.8%	1,650	43.5%
2010	62,666	55.6%	14,622	56.3%	7,423	50.2%	1,676	44.6%
2011	64,120	55.7%	14,965	56.3%	8,293	50.2%	1,827	44.4%
2012	65,612	55.7%	15,287	55.4%	9,232	50.7%	2,077	49.6%

* Total students include domestic students and international students.

Notes:

1. Excludes students in the Toronto School of Theology.
2. Excludes students enrolled in OISE Additional Qualification courses.

GENDER BALANCE OF UNDERGRADUATE AND GRADUATE ENROLMENT BY FIELD OF STUDY
November 1, 2012

STATISTICS CANADA FIELD OF STUDY	UNDERGRADUATE		GRADUATE	
	Total	% Female	Total	% Female
Biological Sciences	4,354	60%	585	51%
Education & Physical Education	2,469	64%	2,231	77%
Engineering & Applied Sciences	5,648	25%	2,378	31%
Fine & Applied Arts	1,691	69%	403	59%
General Arts and Science	11,913	58%	0	--
Health Professions	7,132	55%	3,113	66%
Humanities and Related	7,910	63%	1,656	60%
Math & Physical Sciences	5,386	43%	988	29%
Social Sciences	19,109	61%	3,933	54%
Total	65,612	56%	15,287	55%

Notes:

1. 'Education & Physical Education' includes the Faculty of Kinesiology and Physical Education and the Ontario Institute for Studies in Education (OISE).
2. Excludes students in Additional Qualification courses (OISE).
3. Excludes students in the Toronto School of Theology.

UNDERGRADUATE INTAKE BY FACULTY

November 1, 2012

	TOTAL HEADCOUNT					PERCENTAGE OF TOTAL HEADCOUNT				
	GTA Area	Other Ontario	Other Canada	Inter-national	Total	GTA Area	Other Ontario	Other Canada	Inter-national	Total
Applied Science	646	93	164	537	1,440	44.9%	6.5%	11.4%	37.3%	100%
Architecture, Landscape & Design	75	24	35	65	199	37.7%	12.1%	17.6%	32.7%	100%
Arts & Science										
St George	3,402	690	521	1,656	6,269	54.3%	11.0%	8.3%	26.4%	100%
Mississauga	2,130	269	117	722	3,238	65.8%	8.3%	3.6%	22.3%	100%
Scarborough	2,318	180	116	585	3,199	72.5%	5.6%	3.6%	18.3%	100%
Total Arts & Science	7,850	1,139	754	2,963	12,706	61.8%	9.0%	5.9%	23.3%	100%
Dentistry	22	17	9	0	48	45.8%	35.4%	18.8%	0.0%	100%
Kinesiology & Physical Education	185	33	9	11	238	77.7%	13.9%	3.8%	4.6%	100%
Law	94	40	39	22	195	48.2%	20.5%	20.0%	11.3%	100%
Medicine	127	82	28	1	238	53.4%	34.5%	11.8%	0.4%	100%
Music	105	26	26	7	164	64.0%	15.9%	15.9%	4.3%	100%
Nursing	63	44	7	2	116	54.3%	37.9%	6.0%	1.7%	100%
OISE/UT	530	126	31	10	697	76.0%	18.1%	4.4%	1.4%	100%
Pharmacy	82	52	21	2	157	52.2%	33.1%	13.4%	1.3%	100%
Total Undergraduate	9,779	1,676	1,123	3,620	16,198	60.4%	10.3%	6.9%	22.3%	100%

Notes:

1. Excludes Transitional Year Program, Academic Bridging Program and Woodsworth diploma and certificate programs.
2. Intake data is not available for Post-Graduate Medical Education.

GRADUATE INTAKE BY FACULTY

November 1, 2012

	TOTAL HEADCOUNT					PERCENTAGE OF TOTAL HEADCOUNT				
	GTA Area	Other Ontario	Other Canada	Inter-national	Total	GTA Area	Other Ontario	Other Canada	Inter-national	Total
Applied Science & Engineering	282	82	83	215	662	42.6%	12.4%	12.5%	32.5%	100%
Architecture, Landscape & Design	54	13	25	21	113	47.8%	11.5%	22.1%	18.6%	100%
Arts & Science	598	241	263	241	1,343	44.5%	17.9%	19.6%	17.9%	100%
UTM Professional Graduate	18	7	7	36	68	26.5%	10.3%	10.3%	52.9%	100%
UTSC Professional Masters	42	7	7	10	66	63.6%	10.6%	10.6%	15.2%	100%
Dentistry	4	4	3	3	14	28.6%	28.6%	21.4%	21.4%	100%
Forestry	16	8	2	9	35	45.7%	22.9%	5.7%	25.7%	100%
Information	125	64	26	17	232	53.9%	27.6%	11.2%	7.3%	100%
Kinesiology & Physical Education	15	2	2	2	21	71.4%	9.5%	9.5%	9.5%	100%
Law	37	8	16	35	96	38.5%	8.3%	16.7%	36.5%	100%
Management	311	47	51	170	579	53.7%	8.1%	8.8%	29.4%	100%
Medicine	538	171	108	65	882	61.0%	19.4%	12.2%	7.4%	100%
Music	46	22	29	20	117	39.3%	18.8%	24.8%	17.1%	100%
Nursing	80	37	21	2	140	57.1%	26.4%	15.0%	1.4%	100%
OISE/UT	424	88	52	63	627	67.6%	14.0%	8.3%	10.0%	100%
Pharmacy	15	5	3	0	23	65.2%	21.7%	13.0%	0.0%	100%
Social Work	143	71	24	2	240	59.6%	29.6%	10.0%	0.8%	100%
Total Graduate	2,748	877	722	911	5,258	52.3%	16.7%	13.7%	17.3%	100%

Note: Includes Graduate diplomas in Medicine and Music.

TOTAL INTAKE
November 1, 2012

	TOTAL HEADCOUNT					PERCENTAGE OF TOTAL HEADCOUNT				
	GTA Area	Other Ontario	Other Canada	Inter-national	Total	GTA Area	Other Ontario	Other Canada	Inter-national	Total
Total Undergraduate	9,779	1,676	1,123	3,620	16,198	60.4%	10.3%	6.9%	22.3%	100%
Total Graduate	2,748	877	722	911	5,258	52.3%	16.7%	13.7%	17.3%	100%
Undergraduate & Graduate	12,527	2,553	1,845	4,531	21,456	58.4%	11.9%	8.6%	21.1%	100%

DEGREES AWARDED BY FIELD OF STUDY AND GENDER (preliminary)

Calendar Year 2011

STATISTICS CANADA FIELD OF STUDY	UNDERGRADUATE		MASTERS		DOCTORAL		TOTAL	
	Total	% Female	Total	% Female	Total	% Female	Total	% Female
Biological Sciences	1,154	62%	94	65%	36	53%	1,284	62%
Education & Physical Education	1,323	71%	644	82%	126	75%	2,093	74%
Engineering & Physical Sciences	941	21%	510	28%	113	20%	1,564	24%
Fine & Applied Arts	300	74%	88	64%	21	48%	409	70%
General Arts & Science	513	57%	0	---	0	---	513	57%
Health Professions	1,101	68%	725	77%	194	58%	2,020	70%
Humanities	1,678	65%	451	71%	102	53%	2,231	65%
Mathematics & Physical Sciences	484	36%	180	41%	108	22%	772	36%
Social Sciences	4,101	61%	1,267	54%	130	56%	5,498	59%
Total	11,595	59%	3,959	61%	830	49%	16,384	59%

Notes:

1. 'Education & Physical Education' includes the Faculty of Kinesiology & Physical Education and the Ontario Institute for Studies in Education (OISE).
2. Excludes Toronto School of Theology, Certificate and Diploma students.

TUITION FEE SCHEDULE FOR DOMESTIC AND INTERNATIONAL STUDENTS
2012 Entering Cohort
2012-13

	DOMESTIC STUDENTS	INTERNATIONAL STUDENTS
APPLIED SCIENCE & ENGINEERING		
Bachelors (B.A.Sc.)	\$11,775	\$31,961
Master of Engineering (M.Eng.)	\$11,118	\$31,961
Master of Health Science - Clinical Biomedical Engineering (M.H.Sc.)	\$10,308	\$27,117
ARCHITECTURE, LANDSCAPE, AND DESIGN		
Bachelors (H.B.A.) - Specialist in Architecture, entering 2012	\$5,695	\$28,409
Master of Architecture (M. Arch.)	\$9,477	\$29,121
Master of Landscape Architecture (M.L.A.)	\$9,477	\$29,121
Master of Urban Design (M.U.D.)	\$9,477	\$29,121
ARTS & SCIENCE incl. UTM and UTSC		
Bachelors (B.A./B.Sc.)	\$5,695	\$28,409
*Bachelors - Bioinformatics	\$5,695	\$28,409
*Bachelors - Computer Science	\$5,695	\$28,409
*Bachelors - Communication Culture & Information Technology	\$5,695	\$28,409
*Bachelors - Commerce/Business Administration (B.Com/B.B.A)	\$5,695	\$28,409
*Bachelors - Management UTM	\$5,695	\$28,409
*Bachelors - UTSC - Joint Programs with Centennial College	\$5,695	\$28,409
Woodsworth Certificates	\$5,695	\$28,409
ARTS & SCIENCE St. GEORGE PROFESSIONAL MASTERS		
Master of Financial Economics (M.F.E.)	\$25,330	\$34,672
Master of Global Affairs (M.G.A)	\$17,496	\$27,563

*For Arts and Science students in programs with additional cost recovery fees beginning in Year 2 the fee shown for Entering Year is the Arts and Science fee charged to all students in Year 1.

TUITION FEE SCHEDULE FOR DOMESTIC AND INTERNATIONAL STUDENTS (continued)
2012 Entering Cohort
2012-13

	DOMESTIC STUDENTS	INTERNATIONAL STUDENTS
ARTS & SCIENCE St. GEORGE PROFESSIONAL MASTERS (continued)		
Master of Industrial Relations & Human Resources (M.I.R.H.R.)	\$8,863	\$25,328
Master of Industrial Relations & Human Resources (M.I.R.H.R.) 12 month Advanced Standing Option	\$13,297	\$37,992
Master of Public Policy (M.P.P.)	\$14,693	\$28,715
Master of Science in Applied Computing (M.Sc.A.C.)	\$9,331	\$19,845
Master of Science in Planning (M.Sc.Pl.)	\$8,462	\$22,513
Master of Urban Design Studies (M.U.D.S.)	\$8,462	\$22,513
Master of Visual Studies (M.V.S.)	\$7,160	\$22,513
UTM PROFESSIONAL MASTERS		
Diploma in Investigative and Forensic Accounting (D.I.F.A.)	\$13,330	\$14,582
Master of Science in Biomedical Communications (M.Sc.BMC.)	\$9,926	\$24,499
Master of Biotechnology (M.Biotech.)	\$14,729	\$27,561
Master of Management of Innovation (M.M.I.)	\$26,923	\$37,914
Master of Management & Professional Accounting (M.M.P.A.)	\$30,194	\$36,764
UTSC PROFESSIONAL MASTERS		
Masters in Environmental Science (M.Env.Sc.)	\$10,220	\$28,409
DENTISTRY		
Doctor of Dental Surgery (D.D.S.)	\$30,763	\$58,710
Master of Science with Speciality Training - MOH Funded		
Oral and Maxillofacial Surgery; Oral Medicine and Oral Pathology	\$2,261	n/a
Oral Pathology; Oral Medicine	\$2,868	n/a
Master of Science with Speciality Training - Non-MOH Funded		
Dental Public Health	\$9,559	\$20,413
Oral and Maxillofacial Surgery; Oral Pathology and Oral Medicine	\$25,004	\$48,253

TUITION FEE SCHEDULE FOR DOMESTIC AND INTERNATIONAL STUDENTS (continued)
2012 Entering Cohort
2012-13

	DOMESTIC STUDENTS	INTERNATIONAL STUDENTS
DENTISTRY (continued)		
Other	\$23,082	\$44,768
PhD with Specialty Training		
MOH Funded	\$4,601	n/a
Dental Public Health	\$8,456	\$18,296
Other non-MOH funded	\$15,402	\$30,828
FORESTRY		
Master of Forest Conservation (M.F.C.)	\$8,228	\$25,328
INFORMATION		
Bachelors - Interactive Digital Media (with UTM)	\$5,695	\$28,409
Master of Information (M.I.)	\$8,712	\$25,328
Master of Museum Studies (M.M.St.)	\$8,863	\$23,384
Diploma of Advanced Study in Information Studies	\$8,712	\$25,328
KINESIOLOGY AND PHYSICAL EDUCATION		
Bachelor of Physical Education & Health (B.P.E.H.)	\$5,695	\$24,709
LAW		
Global Professional Master of Law (G.P.L.L.M.)	\$27,864	\$39,218
Juris Doctor (J.D.)	\$27,420	\$35,980
Master of Laws (L.L.M.)	\$7,722	\$25,328
Masters in Studies in Law (M.S.L.)	\$7,722	\$16,886
Doctor of Juridical Science (S.J.D.)	\$7,160	\$16,886
MANAGEMENT		
Master of Business Administration, 2 Year Program (M.B.A.)	\$41,258	\$48,293
Master of Business Administration, 3 Year Program (M.B.A.)	\$28,055	\$32,839
Master of Finance (M.F.)	\$38,909	\$46,190

TUITION FEE SCHEDULE FOR DOMESTIC AND INTERNATIONAL STUDENTS (continued)
2012 Entering Cohort
2012-13

	DOMESTIC STUDENTS	INTERNATIONAL STUDENTS
MEDICINE		
Doctor of Medicine (M.D.)	\$19,546	\$56,284
Bachelor of Health Sciences - Physician Assistant Education (B.Sc.P.A.)	\$10,674	n/a
Bachelor - Radiation Sciences (B.Sc.Med.Rad.Sc.)	\$6,437	\$23,720
Health Science Graduate Diplomas	\$8,863	\$20,413
M.Sc. Occupational Therapy and Physical Therapy (M.Sc.O.T.) (M.Sc.P.T.)	\$8,863	\$22,513
Master of Health Science (M.H.Sc.) - excluding Biomedical Engineering	\$8,863	\$22,513
Master of Health Informatics (M.H.I.)	\$8,863	\$22,513
Master of Science in Community Health (M.Sc.CH.)	\$8,863	\$22,513
Combined MD/PhD	\$13,353	\$36,585
MUSIC		
Undergraduate (Mus.Bac.)	\$5,695	\$24,709
Operatic Performance Diploma (Dip.Op.Perf.)	\$8,055	\$24,709
Advanced Certificate in Performance (Adv.Cert.Perf.)	\$8,055	\$24,709
Master of Music in Performance (Mus.M. (Performance))	\$8,604	\$22,513
Master of Music in Composition (Mus.M. (Composition))	\$8,604	\$22,513
Doctor of Musical Arts (Performance) & (Composition) D.M.A.	\$8,328	\$16,886
NURSING		
Bachelor of Science in Nursing (B.Sc.N)	\$7,642	\$28,409
Concurrent Diploma in Anaesthesia/MN	\$14,551	\$22,240
Diploma in Anaesthesia	\$14,551	\$22,240
Master of Nursing (M.N.)	\$10,123	\$28,409
Post-Masters Nurse Practitioner Diploma Program (part-time)	\$7,133	\$10,849

TUITION FEE SCHEDULE FOR DOMESTIC AND INTERNATIONAL STUDENTS (continued)
2012 Entering Cohort
2012-13

	DOMESTIC STUDENTS	INTERNATIONAL STUDENTS
OISE/UT		
Bachelor of Education (B.Ed.); Technical & Vocational Diplomas or Certificates	\$6,317	\$28,409
Concurrent Teacher Education Program (CTEP)	\$5,943	\$28,409
Master of Teaching in Elementary and Secondary Education (M.T.)	\$8,863	\$22,513
M.A. in Child Study	\$8,863	\$22,513
Master of Education (M.Ed.)	\$8,863	\$22,513
Doctor of Education (Ed.D.)	\$8,375	\$22,513
PHARMACY		
Bachelor of Science in Pharmacy (B.Sc. Pharm.)	\$14,994	\$28,143
Doctor of Pharmacy (Pharm.D.)	\$36,514	\$36,514
Combined Bachelor/Pharm.D.	\$36,514	\$36,514
S.G.S. (annual fee)		
Doctoral Stream	\$7,160	\$16,886
SOCIAL WORK		
Master of Social Work (M.S.W.)	\$8,072	\$22,513
Diploma in Social Service Administration (D.S.S.A.)	\$7,160	\$16,886
TRANSITIONAL YEAR PROGRAM		
Regular	\$4,840	n/a
Extended	\$2,419	n/a

TUITION FEE SCHEDULE FOR SELF-FUNDED PROGRAMS
 2012-13

	2012
	ENTERING
	COHORT
Summer Program in Medieval Latin	
Domestic	\$1,000
International	\$1,000
Masters of Mathematical Finance	\$40,000
International Dentist Advanced Placement Program	\$37,926
Executive Masters of Business Administration	\$93,000
Executive Masters of Business Administration (OMNIUM GEMBA)	\$89,000 (CDN)
OISE/UT- Laboratory School - Half Day Program	\$10,549
OISE/UT- Laboratory School - Full Day Program	\$16,448
OISE/UT- Laboratory School - Bloorview MacMillan	\$14,924

Part E Graduates

Graduates by Region	52
Number of Degree Affiliations by College or Faculty	53
Total Annual Gifts Received	54
Percentage of Pledge Dollars by Donor Sector	55

GRADUATES BY REGION
As of Fall 2012

	NUMBER OF LIVING	PERCENTAGE OF LIVING
Canada		
Ontario		
Metro Toronto	228,509	44.9%
Central Ontario	143,132	28.1%
South-western Ontario	24,294	4.8%
Eastern Ontario	22,697	4.5%
Northern Ontario	7,980	1.6%
Subtotal Ontario	426,612	83.9%
Rest of Canada		
British Columbia	12,963	2.5%
Alberta	7,381	1.5%
Quebec	5,832	1.1%
Nova Scotia	2,696	0.5%
Manitoba	2,144	0.4%
Saskatchewan	1,601	0.3%
Newfoundland	1,174	0.2%
New Brunswick	1,129	0.2%
Prince Edward Island	330	0.1%
Northwest Territories	180	
Yukon Territory	122	0.1%
Nunavut	36	
Unknown within Canada	750	0.1%
Canada Total	462,950	91.0%
United States	23,511	4.6%
International	22,033	4.3%
International Total	45,544	9.0%
Grand Total	508,494	100.0%

Notes:

1. The number of individuals (both living and deceased) who have graduated from the University of Toronto is 595,061 as of Fall 2012.
2. Regional Breakdown is based on data as of November 14, 2012

**NUMBER OF DEGREE AFFILIATIONS
BY COLLEGE OR FACULTY**

As of Fall 2012

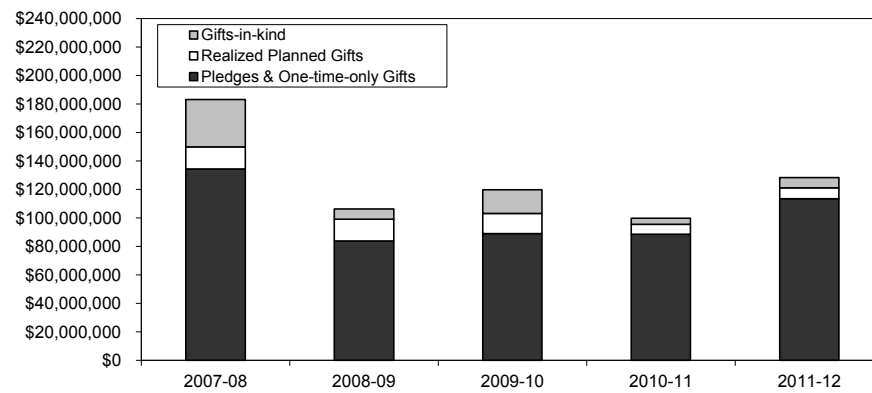
	NUMBER OF DEGREE AFFILIATIONS
Arts & Science Programs	
Constituent Colleges:	
Innis College	9,330
New College	22,377
University College	50,946
Woodsworth College	22,835
Federated Colleges:	
St. Michael's College	34,553
Trinity College	20,298
Victoria College	43,303
University of Toronto Mississauga	41,767
University of Toronto Scarborough	40,401
Other Faculties	
Applied Science & Engineering	53,469
Architecture, Landscape & Design	4,018
Dentistry	11,475
Forestry	2,940
Graduate Studies/ Graduate Institutes & Centres	123,482
Information	7,077
Kinesiology & Physical Education	5,619
Joseph L. Rotman School of Management	12,853
Law	9,344
Medicine, Doctor of	15,932
Other Medicine	19,197
Music	5,806
Nursing	11,781
OISE/UT:	
Undergraduate	54,443
Graduate	25,960
Institute of Child Study	2,471
Pharmacy	12,018
Physical & Occupational Therapy	7,585
Social Work	8,805
Woodsworth Certificate & Diploma	7,331

Notes:

1. Honorary degrees are excluded.
2. Graduates with multiple degrees are counted in more than one constituency.
3. A single degree may be affiliated with more than one constituency.
4. Excludes Toronto School of Theology.

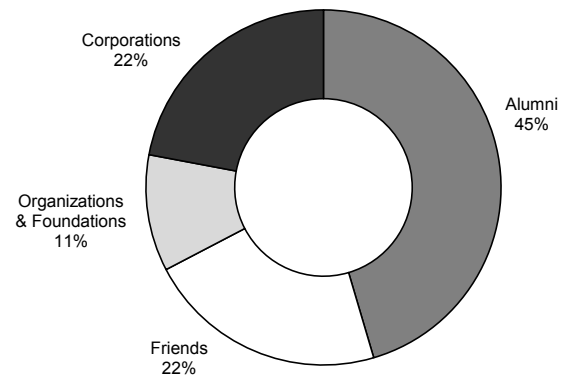
TOTAL ANNUAL GIFTS RECEIVED

2007-08 to 2011-12



PERCENTAGE OF PLEDGE DOLLARS BY DONOR SECTOR
2011-12

Total Value: \$128,243,910



Part F Student Awards

Undergraduate Student Support : Admission Scholarships, In-Course Scholarships and Bursaries by Faculty and College	58
OSAP and University of Toronto Advanced Planning for Students Program (UTAPS) by Faculty and College	60
Graduate Student Support by Source	64
Graduate Student Support by School of Graduate Studies Division	64

**UNDERGRADUATE STUDENT SUPPORT: ADMISSION SCHOLARSHIPS, IN-COURSE SCHOLARSHIPS AND BURSARIES
BY FACULTY AND COLLEGE
2011-12**

First Entry Undergraduate

FACULTY / COLLEGE	ADMISSION SCHOLARSHIPS		IN-COURSE SCHOLARSHIPS		BURSARIES	
	Number	Value (\$)	Number	Value (\$)	Number	Value (\$)
Applied Science and Engineering Arts and Science, St. George	698	\$2,062,441	291	\$699,841	1,952	\$8,976,616
Innis College	71	\$200,814	190	\$302,465	290	\$690,825
New College	135	\$330,966	272	\$330,727	763	\$1,833,519
St. Michael's College	94	\$217,098	261	\$443,979	571	\$1,253,731
Trinity College	265	\$699,992	568	\$737,235	348	\$953,076
University College	350	\$634,002	820	\$696,327	747	\$2,034,983
Victoria College	211	\$691,053	677	\$875,447	797	\$1,811,092
Woodsworth College	80	\$237,711	147	\$205,056	1,751	\$3,341,758
Music	35	\$107,225	105	\$229,345	211	\$524,839
Kinesiology and Physical Education	11	\$24,877	44	\$79,593	94	\$209,933
Transitional Year Program	-	\$0	30	\$6,367	168	\$264,092
U of T Mississauga	304	\$520,000	183	\$203,602	1,145	\$4,154,646
U of T Scarborough	351	\$699,214	443	\$350,752	1,539	\$4,526,871
Total	2,605	\$6,425,392	4,031	\$5,160,736	10,376	\$30,575,982

**UNDERGRADUATE STUDENT SUPPORT: ADMISSION SCHOLARSHIPS, IN-COURSE SCHOLARSHIPS AND BURSARIES
BY FACULTY AND COLLEGE**
(continued)

Second Entry Undergraduate

FACULTY / COLLEGE	ADMISSION SCHOLARSHIPS		IN-COURSE SCHOLARSHIPS		BURSARIES	
	Number	Value (\$)	Number	Value (\$)	Number	Value (\$)
Dentistry	3	\$3,696	70	\$54,010	281	\$826,636
Law	9	\$33,850	100	\$126,834	486	\$2,810,614
Medicine	3	\$11,342	280	\$232,684	1,183	\$4,854,576
Radiation Sciences	-	\$0	1	\$300	120	\$207,230
Physician Assistant	-	\$0	-	\$0	6	\$26,500
Nursing	3	\$6,644	33	\$63,395	240	\$605,523
OISE/UT Undergraduate	12	\$34,660	31	\$41,642	457	\$1,214,699
Pharmacy	18	\$14,487	73	\$45,858	1,214	\$2,192,186
Total	48	\$104,678	588	\$564,722	3,987	\$12,737,963
Undergraduate Total	2,653	\$6,530,070	4,619	\$5,725,459	14,363	\$43,313,945

Note:

1. Dependant Scholarship is not included in these numbers.
2. By Fiscal Year (journal date between May 1, 2011 to April 30, 2012)

OSAP AND UNIVERSITY OF TORONTO ADVANCED PLANNING FOR STUDENTS PROGRAM (UTAPS) BY FACULTY AND COLLEGE

2011-2012

First Entry Undergraduate

Faculty/College	OSAP Recipients as a Percentage of Full-Time Enrolment			OSAP		UTAPS	
	Number	Value (\$)	Number	Value (\$)	Number	Value (\$)	
Applied Science and Engineering	1,728	3,518	49%	1,728	\$13,450,672	1,412	\$7,281,886
Arts & Science St. George	8,615	20,270	43%	8,615	\$72,890,382	1,410	\$4,409,672
Innis College	654	1,438	45%	654	\$5,518,716	116	\$389,800
New College	1,576	3,410	46%	1,576	\$13,393,730	226	\$684,900
St. Michael's College	1,427	3,872	37%	1,427	\$11,589,729	180	\$493,400
Trinity College	517	1,520	34%	517	\$4,230,099	93	\$322,722
University College	1,534	3,489	44%	1,534	\$12,843,383	271	\$909,750
Victoria College	1,097	2,854	38%	1,097	\$8,795,496	144	\$461,100
Woodsworth College	1,810	3,687	49%	1,810	\$16,519,229	380	\$1,148,000
Music	190	508	37%	190	\$1,644,947	34	\$64,650
Kinesiology & Physical Education	291	727	40%	291	\$2,288,287	16	\$19,800
Transitional Year Program	63	71	89%	63	\$845,696	24	\$55,150
U of T Mississauga	4,308	9,471	45%	4,308	\$33,736,468	772	\$3,258,750
U of T Scarborough	4,768	8,400	57%	4,768	\$34,883,624	718	\$3,176,632
Total	19,963	42,965	46%	19,963	\$159,740,076	4,386	\$18,266,539

OSAP AND UNIVERSITY OF TORONTO ADVANCED PLANNING FOR STUDENTS PROGRAM (UTAPS) BY FACULTY AND COLLEGE

2011-2012 (continued)

Second Entry Undergraduate

Faculty/College	OSAP Recipients as a Percentage of Full-Time Enrolment			OSAP		UTAPS	
	Number	Value (\$)	Number	Value (\$)	Number	Value (\$)	
Dentistry	214	316	68%	214	\$3,116,548	213	\$758,319
Law	287	590	49%	287	\$2,964,730	-	\$0
Medicine	652	952	68%	652	\$9,541,614	-	\$0
Radiation Sciences	214	336	64%	214	\$2,738,068	66	\$108,400
Physician Assistant	13	28	46%	13	\$250,068	6	\$26,500
Nursing	193	325	59%	193	\$2,820,412	98	\$177,800
OISE/UT Undergraduate	388	1,076	36%	388	\$4,542,659	158	\$534,350
Pharmacy	671	949	71%	671	\$6,555,658	614	\$1,487,834
Woodsworth - Cert.	35	48	73%	35	\$300,098	5	\$9,200
Total	2,667	4,620	58%	2,667	\$32,829,855	1,160	\$3,102,403
Undergraduate Total	22,630	47,585	48%	22,630	\$192,569,931	5,546	\$21,368,942

OSAP AND UNIVERSITY OF TORONTO ADVANCED PLANNING FOR STUDENTS PROGRAM (UTAPS) BY FACULTY AND COLLEGE
2011-2012 (continued)

Graduate

Faculty	OSAP Recipients as a Percentage of Full-Time Enrolment			OSAP		UTAPS	
	Number	Value (\$)	Number	Value (\$)	Number	Value (\$)	
Applied Science & Engineering	151	1,079	14%	151	\$1,475,887	113	\$604,015
Architecture, Landscape, & Design	175	293	60%	175	\$1,703,947	167	\$871,900
Arts & Science	245	2,596	9%	245	\$2,395,648	202	\$1,132,491
Dentistry	7	93	8%	7	\$102,615	6	\$16,358
Forestry	25	75	33%	25	\$331,806	22	\$56,300
Information	180	416	43%	180	\$1,773,446	177	\$843,750
Kinesiology & Physical Education	11	43	26%	11	\$98,613	8	\$20,800
Law	11	81	14%	11	\$215,561	10	\$13,977
Management	87	702	12%	87	\$826,947	1	\$3,100
Medicine	357	2,245	16%	357	\$4,441,411	347	\$1,044,072
Music	20	172	12%	20	\$211,092	20	\$82,700
Nursing	7	252	3%	7	\$50,563	5	\$25,800
OISE/UT	296	1,153	26%	296	\$3,083,648	261	\$1,260,900
Pharmacy	3	94	3%	3	\$8,708	2	\$3,200

OSAP AND UNIVERSITY OF TORONTO ADVANCED PLANNING FOR STUDENTS PROGRAM (UTAPS) BY FACULTY AND COLLEGE

2011-2012 (continued)

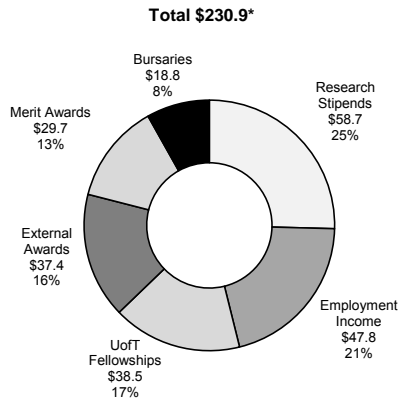
Graduate

Faculty	OSAP Recipients as a Percentage of Full-Time Enrolment			OSAP		UTAPS	
	Number	Value (\$)	Number	Value (\$)	Number	Value (\$)	
Social Work	163	380	43%	163	\$1,668,746	162	\$679,100
UTM Graduate Programs	29	72	40%	29	\$386,574	25	\$70,833
UTSc Graduate Programs	16	54	30%	16	\$287,411	16	\$55,500
Graduate Total	1,783	9,800	18%	1,783	\$19,062,623	1,544	\$6,784,796
Grant Total	24,413	57,385	43%	24,413	\$211,632,554	7,090	\$28,153,739

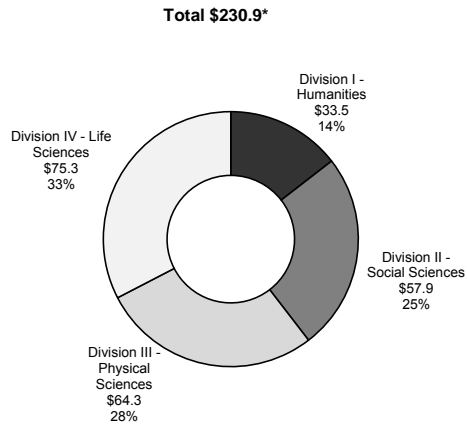
Notes:

1. By Fiscal Year (journal date between May 1, 2011 to April 30, 2012)
2. UTAPS for School of Graduate Studies is included in the Graduate totals.
3. UTAPS at Law, Management and Medicine is distributed as part of their grants programs and are not included above.
4. UTAPS data in this table refers to grants awards to OSAP recipients only.
5. OSAP amounts include Federal/Ontario loans/grants.

GRADUATE STUDENT SUPPORT BY SOURCE
 2011-12
 (millions of dollars)



GRADUATE STUDENT SUPPORT BY SCHOOL OF GRADUATE STUDIES DIVISION
 2011-12
 (millions of dollars)



*Includes affiliated hospitals.

Part G Faculty and Administrative Staff

Distribution of Full-Time Appointed Tenured/Tenure Stream Faculty by Major Division and Main Appointment	66
Distribution of Full-Time Tenured/Tenure Stream Faculty by Rank and Gender	67
Age Distribution of Tenured/Tenure Stream Faculty	67
Distribution of Full and Part-Time (>=25%) Academic Staff and Librarians by Rank and Gender	68
All Active Faculty with Teaching/Research Responsibilities	69
Distribution of Full and Part-Time Administrative and Union Staff	70
Gross Operating Fund Full-Time Equivalent Staff	72

**DISTRIBUTION OF FULL-TIME APPOINTED TENURED/TENURE
STREAM FACULTY BY MAJOR DIVISION
AND MAIN APPOINTMENT**

All Sources of Funding
October 2011

DIVISION	MALE	FEMALE	TOTAL
Applied Science & Engineering	172	29	201
Architecture	10	7	17
Arts & Science*	460	231	691
Dentistry	32	13	45
Education (OISE/UT)**	48	69	117
Forestry	9	3	12
Information	10	11	21
Kinesiology & Physical Education	13	5	18
Law	31	20	51
Management***	81	20	101
Medicine	123	77	200
Music	20	10	30
Nursing	4	16	20
Pharmacy	17	14	31
Social Work	8	14	22
U of T Mississauga	150	70	220
U of T Scarborough	125	65	190
Total	1,313	674	1,987

* Arts & Science includes Transitional Year Program and the St. George campus colleges (Innis, New, University, Woodsworth, St. Michael's, Trinity, Victoria).

** OISE/UT excludes staff at the Institute of Child Studies

*** Management only includes Joseph L. Rotman School of Management

**DISTRIBUTION OF FULL-TIME TENURED/TENURE STREAM
FACULTY BY RANK AND GENDER**

All Sources of Funding
October 2011

RANK	MALE	FEMALE	TOTAL
Professor	659	215	874
Associate Professor	433	280	713
Assistant Professor	213	175	388
Assistant Professor (conditional)	8	4	12
Total	1,313	674	1,987

Note: Includes Faculties of Medicine and Dentistry.

**AGE DISTRIBUTION OF FULL-TIME TENURED/TENURE
STREAM FACULTY**

October 2011

RANK	AVERAGE AGE
Professor	56.3
Associate Professor	47.2
Assistant Professor	37.3
Assistant Professor (conditional)	31.3

Note: Total number of Full-time Tenured/Tenure Stream
Faculty = 1,987.

DISTRIBUTION OF FULL AND PART-TIME (>=25%) ACADEMIC STAFF AND LIBRARIANS BY RANK AND GENDER

All Sources of Funding
October 2011

RANK	FULL-TIME		
	Male	Female	Total
Professor	780	245	1,025
Associate Professor	504	327	831
Assistant Professor	262	230	492
Assistant Professor (cond.)	11	5	16
Lecturer (Health Sciences)			
Senior Instructure/Instructor (PhysEd)	6	4	10
Senior Lecturer/Lecturer	151	152	303
Senior Tutor	7	4	11
Sub-Total	1,721	967	2,688
Librarian	41	106	147
Total	1,762	1,073	2,835

RANK	PART-TIME		
	Male	Female	Total
Professor	61	21	82
Associate Professor	33	20	53
Assistant Professor	26	39	65
Assistant Professor (cond.)			
Lecturer (Health Sciences)	1	1	2
Instructor (PhysEd)	1		1
Senior Lecturer/Lecturer	53	88	141
Senior Tutor		1	1
Sub-Total	175	170	345
Librarian	2	4	6
Total	177	174	351

DISTRIBUTION OF FULL AND PART-TIME (>=25%) ACADEMIC STAFF AND LIBRARIANS BY RANK AND GENDER (continued)

All Sources of Funding
October 2011

RANK	ALL		
	Male	Female	Total
Professor	841	266	1,107
Associate Professor	537	347	884
Assistant Professor	288	269	557
Assistant Professor (cond.)	11	5	16
Lecturer (Health Sciences)	1	1	2
Instructor (PhysEd)	7	4	11
Senior Lecturer/Lecturer	204	240	444
Senior Tutor/Tutor	7	5	12
Sub-Total	1,896	1,137	3,033
Librarian	43	110	153
Total	1,939	1,247	3,186

Notes:

1. Includes Faculty of Medicine and Dentistry
2. Includes both tenured/tenure stream, non-tenure stream professorial ranks, teaching stream and other academics
3. Does not include those currently identified as members of CUPE 3902 Unit 3.
4. The Senior Tutor/Tutor group is being phased out.

ALL ACTIVE FACULTY WITH TEACHING/RESEARCH RESPONSIBILITIES

Fall 2011

	FULL TIME	PART TIME	TOTAL
Professorial	2,138	166	2,304
Teaching Stream	327	156	483
Term-limited, Sessional and Stipendiary	0	1,081	1,081
Clinical	2,487	2,545	5,032
Other	601	2,080	2,681
Total	5,553	6,028	11,581

Notes:

1. Includes faculty with active appointments only who are contributing to the teaching and/or research mission of the University regardless of pay source.
2. Excludes Research Fellows
3. Excludes Teaching Assistants
4. "Professorial" includes tenure/tenure-stream and other appointed professors (Assistant, Associate, Full).
5. "Teaching Stream" includes lecturers, instructors and other teaching faculty with continuing appointments.
6. "Term-limited, Sessional and Stipendiary" includes casual instructors teaching a course(s).
7. "Clinical" includes faculty contributing to the education of Medical students located at the University and other clinical settings e.g., hospitals.
8. "Other" includes Research Associates, other faculty with graduate appointments, and status only appointments.

**DISTRIBUTION OF FULL AND PART-TIME ADMINISTRATIVE
AND UNION STAFF**

September 2011

EMPLOYEE GROUP	FULL-TIME		
	Male	Female	Total
Non-Unionized Employees			
Research Associates	200	98	298
USW-exempt Admin staff*	347	569	916
Total non-unionized employees	547	667	1,214
Unionized Employees			
89 Chestnut St. Hospitality Workers	48	30	78
Administrative staff*	1,092	2,313	3,405
Child Care Workers	1	31	32
Library Workers	50	80	130
Operating Engineers and Building Management Systems Technicians	87	2	89
Police	31	16	47
Research Associates & Officers	1	3	4
Service Workers	344	259	603
Sessional Lecturers	0	0	0
Teaching Assistants and OISE Graduate Assistants	0	0	0
Trades and Services**	77	2	79
Total unionized employees	1,731	2,736	4,467
Total	2,278	3,403	5,681

EMPLOYEE GROUP	PART-TIME		
	Male	Female	Total
Non-Unionized Employees			
Research Associates	13	25	38
USW-exempt Admin staff*	4	20	24
Total non-unionized employees	17	45	62
Unionized Employees			
89 Chestnut St. Hospitality Workers	0	0	0
Administrative staff*	52	167	219
Child Care Workers	0	6	6
Library Workers	5	10	15
Operating Engineers and Building Management Systems Technicians	0	0	0
Police	0	0	0
Research Associates & Officers	1	2	3
Service Workers	21	10	31
Sessional Lecturers	417	422	839
Teaching Assistants and OISE Graduate Assistants	2,444	2,084	4,528
Trades and Services**	0	0	0
Total unionized employees	2,940	2,701	5,641
Total	2,957	2,746	5,703

**DISTRIBUTION OF FULL AND PART-TIME ADMINISTRATIVE
AND UNION STAFF (continued)**

September 2011

EMPLOYEE GROUP	ALL		
	Male	Female	Total
Non-Unionized Employees			
Research Associates	213	123	336
USW-exempt Admin staff*	351	589	940
Total non-unionized employees	564	712	1,276
Unionized Employees			
89 Chestnut St. Hospitality Workers	48	30	78
Administrative staff*	1,144	2,480	3,624
Child Care Workers	1	37	38
Library Workers	55	90	145
Operating Engineers and Building Management Systems Technicians	87	2	89
Police	31	16	47
Research Associates & Officers	2	5	7
Service Workers	365	269	634
Sessional Lecturers	417	422	839
Teaching Assistants and OISE Graduate Assistants	2,444	2,084	4,528
Trades and Services**	77	2	79
Total unionized employees	4,671	5,437	10,108
Total	5,235	6,149	11,384

* Excludes Non University of Toronto Departments.

** Trades and Services includes Machinists, Carpenters, Electrical Workers, Sheet Metal Workers, Plumbers, Pipefitters, and Painters.

GROSS OPERATING FUND FULL-TIME EQUIVALENT STAFF
2012-13 Budget

DIVISION	ACADEMIC	NON-ACADEMIC*
St. George		
Applied Science and Engineering	241.88	236.70
Architecture, Landscape, and Design	30.07	19.67
Arts & Science**	901.42	551.37
Colleges***	23.24	99.85
Dentistry	71.87	172.51
Forestry	12.59	6.10
Information	24.91	30.87
Law	50.56	61.39
Management	136.67	193.30
Medicine	618.78	590.75
Music	50.15	29.83
Nursing	45.50	26.25
OISE/UT	158.96	143.05
Pharmacy	48.10	42.00
Kinesiology & Physical Education	26.72	13.60
Continuing Studies, School of	0.00	92.18
Graduate Studies, School of	5.60	46.00
Social Work	24.41	15.55
Transitional Year Program	6.25	2.50
Total St. George Academic	2,477.68	2,373.47
Libraries and Information Commons	0.00	404.98
Administration	13.00	929.97
Campus and Student Services****	11.93	260.73
Facilities and Services	0.00	621.03
Total St. George	2,502.61	4,590.18
Mississauga, University of Toronto		
UTM Academic	289.79	106.59
UTM Library	0.00	41.05
Administration	1.00	122.78
Campus and Student Services	0.00	53.09
Facilities and Services	0.00	99.17
Total UTM	290.79	422.68
Scarborough, University of Toronto		
UTSC Academic	288.77	124.35
UTSC Library	5.50	34.24
Administration	1.00	106.50
Campus and Student Services	0.00	63.67
Facilities and Services	0.00	113.00
Total UTSC	295.27	441.76
Grand Total	3,088.67	5,454.62

* Librarians, Admin and Union staff are included in the non-academic group.

** Arts & Science includes College Programs related to Arts & Science.

*** Colleges include Innis, New, University, Woodsworth programs and resources independent of Arts & Science

**** Includes Kinesiology & Physical Ed Co-Curricular

Note: These are budgeted FTEs which include TBA's and include Recovered and Self-funded FTEs.

Part H Library

Library Collections	74
Number of Loans	75

LIBRARY COLLECTIONS
2011-2012

There are 44 libraries in the University of Toronto Library System.

COLLECTIONS	CENTRAL LIBRARIES	LOCAL LIBRARIES*	SCARBOROUGH/ MISSISSAUGA	FEDERATED/ AFFILIATED	DIGITAL LIBRARY**	TOTAL
Books	8,437,511	1,159,710	699,848	1,381,974	1,356,584	13,035,627
Cartographic Materials	262,510	0	39,117	92		301,719
CD-ROM (Bibliog. & Text)	10,576	2,062	310	820		13,768
Computer Data Files	970,280	958	0	3		971,241
Films & Videos	36,371	3,334	1,771	7,190		48,666
Graphic Materials	322,768	365,828	63,374	71,751		823,721
Microforms	5,284,827	129,620	39,214	132,157		5,585,818
Sheet Music		64,984	2,279	126		67,389
Sound Recording	11,868	206,282	4,509	5,766	2,238	228,425
Other Formats	39,048	31,197	530	673		71,448
Total	15,375,759	1,963,975	850,952	1,600,552		21,147,822
Current Serials	16,575	4,156	1,815	3,033	213,385	238,964
Manuscripts (Metres)	29,023	92	0	193		29,307

* Materials on transfer from Central to Local Libraries are shown in the counts for Local Libraries where they are located.
Bound volumes of subscriptions are included in the Book counts.

** Electronic resources (Books & Journals).

NUMBER OF LOANS
2011-2012

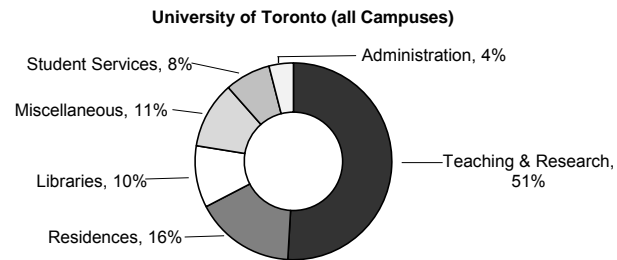
Central Libraries	
Robarts Library	970,246
Gerstein Science Information Centre	146,778
OISE/UT Library	112,446
Fisher Library/Archives	17,029
Media Commons	70,808
Branch Libraries	284,529
Sub-Total	1,601,836
Local Libraries*	350,874
UT Mississauga Library	214,597
UT Scarborough Library	77,805
Federated/Affiliated Libraries	363,104
Total	2,608,216

* Local Libraries include some Hospital Consortium Libraries.

Part I Physical Plant

Usage of Assignable Space	78
Number of Buildings and Square Metres	79
Area of U of T Properties	80
Number of Parking Spaces	80
Number of Public Assembly Facilities	80
Number of University of Toronto Students in Residence	81

USAGE OF ASSIGNABLE SPACE
2011-12



	ST. GEORGE CAMPUS	MISSISSAUGA CAMPUS	SCARBOROUGH CAMPUS
Teaching & Research	54%	38%	43%
Residence	13%	33%	22%
Libraries	11%	6%	5%
Student Services	6%	12%	12%
Administration	4%	4%	7%
Miscellaneous	12%	7%	11%

Notes:

1. **Student Services** includes: Athletics, Food Services, Bookstore and Merchandising and Health Services.
2. **Miscellaneous** includes: Plant Maintenance, Assembly & Exhibition Facilities, Common Use and Student Activity and Other University Facilities.
3. **Teaching and Research** includes: Classrooms, Teaching and Research Laboratories, Academic Services, Health Science Clinic Facilities, Central Services and Media Services.

NUMBER OF BUILDINGS AND SQUARE METRES

2011-2012 as of September 2012

	NUMBER OF BUILDINGS	NET ASSIGNABLE SQUARE METRES	NET SQUARE METRES	GROSS SQUARE METRES
University				
St. George	121	633,023	1,025,134	1,194,166
Leased St. George	7	5,738	7,860	9,470
Scarborough	34	71,623	112,755	129,817
Mississauga	48	97,410	163,368	185,484
Total University	210	807,794	1,309,117	1,518,937
Federated Colleges and Massey	49	96,971	148,494	185,573
Grand Total	259	904,765	1,457,611	1,704,510

Notes:

1. **Net Assignable Square Metres** is the sum of all areas on all floors of the building assigned to, or available for assignment to, an occupant, including every type of space functionality used by an occupant.
2. **Net Square Metres** is the sum of all areas on all floors of the building, both assigned (see definition above) and non-assigned (i.e. corridors, stairs, mechanical rooms etc.)
3. **Gross Area Square Metres** is the sum of all floors areas included within the outside faces of exterior walls, which have floor surfaces.

AREA OF U OF T PROPERTIES
2011-12

	HECTARES
CAMPUSES	
Downtown Campus	
St. George	53.6
Federated Colleges and Massey	17.9
Total Downtown Campus	71.5
Scarborough	122.5
Mississauga	89.4
Total Campuses	283.4
OFF CAMPUS	
Aerospace	11.9
Joker's Hill	346.0
Total Off Campus	357.9
Grand Total	641.3

Notes:

1. Excludes Huron/Sussex houses.
2. Total Downtown Campus includes St. George, Federated Colleges and Massey.

NUMBER OF PARKING SPACES
2011-12

	NUMBER OF SPACES
St. George	1,832
Scarborough	2,772
Mississauga	2,361
Total	6,965

NUMBER OF PUBLIC ASSEMBLY FACILITIES
2011-12

	NUMBER OF FACILITIES	SEATING CAPACITY
St. George Lecture Theatres / Hall*	47	11,107
St. George Auditorium	4	3,401
Dining Rooms and Cafeterias*	31	3,982
Varsity Arena	1	4,000

* Including Federated Colleges

NUMBER OF UNIVERSITY OF TORONTO STUDENTS IN RESIDENCE
2012-13

	NUMBER OF FIRST-YEAR STUDENTS	NUMBER OF STUDENTS	TOTAL SPACES
University of Toronto Residences			
St. George Campus			
U of T Operated			
Innis College	246	328	329
New College*	662	877	884
University College	501	728	748
Woodsworth College	281	361	370
Ancillary Operated			
89 Chestnut	742	1,084	1,091
Graduate House	0	436	436
Family Housing**	6	721	721
Federated Colleges			
St. Michael's College (Incl. Loretto College Residence)	396	649	649
Trinity College	262	446	448
Victoria University	464	799	802
St. George Total	3,560	6,429	6,478
Mississauga Campus			
Undergraduate Housing	749	1,188	1,329
Family & Graduate Housing (incl. med.)	30	229	229
Mississauga Total	779	1,417	1,558
Scarborough Campus			
Scarborough Total	529	769	769
Total University of Toronto Residences	4,868	8,615	8,805
Independent Residences			
Knox College***	6	102	103
Massey College	0	60	60
Wycliffe College	1	81	82
Total Independent Residences	7	243	245
Grand Total	4,875	8,858	9,050

* New College added approx. 80 beds in 45 Willcocks in 2012

** Family Housing has 712 apartments for 712 families at 30 & 35 Charles St. W.. Increase is due to 9 units open at Huron-Sussex. The number of actual residents (students, spouses, and children) fluctuates from one month the next, but generally runs from 2,000 to 2,400.

*** Instead of using the super singles for 1 person in 2008-09, Knox College decided to make them double rooms due to the demand on residence.

Notes:

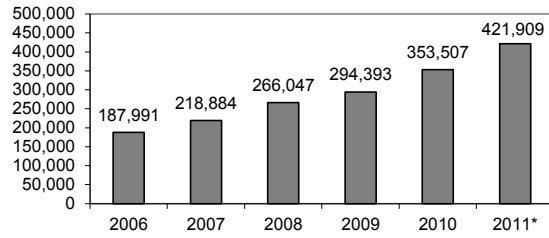
1. 'Number of Students' is the number of students registered in a U of T Faculty as of Nov 1, including UofT - TST students, students serving as dons/resident assistants.
2. 'Number of First Year Students' includes direct-entry undergraduate students only.
3. 'Total Spaces' includes the 'Number of Students' plus post-doctoral students, students not registered on Nov. 1, non-students, students of other institutions, and vacancies.

Part J

Computing and Communications

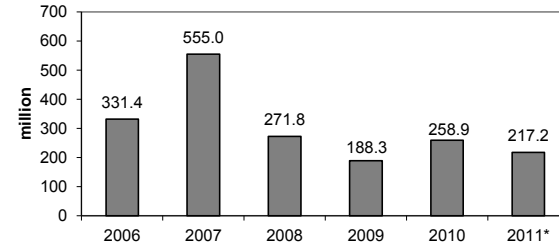
Number of UTORmail Accounts at Year End	84
Number of Messages Delivered by UTORmail Post Office	84
Number of Web Transactions	84
Institutional Internet Services	
- Virtual Private Network (VPN)	85
Campus Wireless Network	85
Usage of Electronic Student Services	86

NUMBER OF UTORmail ACCOUNTS AT YEAR END
2006-2011



NUMBER OF MESSAGES DELIVERED BY UTORmail POST OFFICE

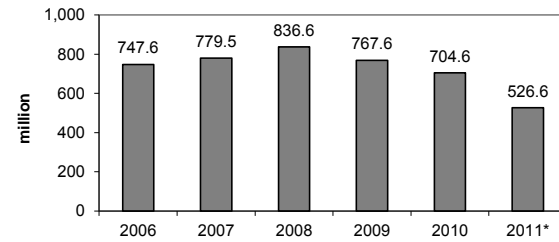
2006-2011
(In Millions)



NUMBER OF WEB TRANSACTIONS

For the institutional server www.utoronto.ca

2006-2011
(In Millions)



*Note: 2011 figures represent counts up to November 30, 2011.
2006-2008 figures cover the period from January 1 to December 31 of each year.

INSTITUTIONAL INTERNET SERVICES
2004-2011

Virtual Private Network (VPN)*
Provides 'direct' access to the UofT network.

Date	Number of Users
December 2004	0
December 2005	610
December 2006	1,153
December 2007	1,823
September 2008	2,357
December 2009	3,474
December 2010	4,345
December 2011	5,313

*The VPN Service first became available in January 2005.

CAMPUS WIRELESS NETWORK
2004-2011

Date	Buildings	Access Points	Sessions per Week
October 2004	24	244	14,000
October 2005	41	320	25,000
October 2006	66	495	42,000
October 2007	96	677	75,000
October 2008	105	768	95,000
October 2009	121	903	127,000
October 2010	125	999	167,000
October 2011*	111	1,021	250,000

* Excludes U of T Mississauga and U of T Scarborough

USAGE OF ELECTRONIC STUDENT SERVICES

September 1, 2011 to August 31, 2012

ACTIVITY	ROSI STUDENT WEB SERVICES rosi.utoronto.ca
Accessing the System	
Successful attempt to login	9,609,522
Unsuccessful attempt to login	180,492
Access suspended	6,941
Change PIN	52,136
Unsuccessful attempt to change PIN	1,335
Setup completed for PIN reactivation	27,368
Successful attempt to reactivate PIN	27,239
Unsuccessful attempt to reactivate PIN	8,733
Suspend PIN reactivation	5,061
Maintaining Personal Information	
Add bank information	6,200
Cancel bank information	277
Add new address	9,207
Change address	45,898
Add new contact information	3,167
Change contact information	1,647
Delete contact information	243
Add new telephone number	2,881
Change telephone number	6,074
Change e-mail address	24,798
Choosing/Changing Academic Options	
Add Academic Activity	753,824
Drop academic activity	414,454
Modify academic activity	288,623
Add waitlisted academic activity	222,141
Drop waitlisted academic activity	75,594
Modify waitlisted academic activity	8,970
List courses	5,890,868
Accept Subject POST	12,421
Add new Subject POST	62,228
Change Subject POST	10,148
Delete Subject POST	38,985
Cancel invited registration	751
Cancel registration/Deregister	5,358
Confirm graduation request	9,924
Declaration of Absence	5,583
Viewing Financial Information	
Successful tuition deferral	25,876
Failed tuition deferral	40,118
View Financial Account - Invoice	1,103,107
View Financial Account - Detail	362,048
Requesting/Paying for Transcripts	
Request transcript, charged to account	12,825
Request transcript, paid electronically	39,248
Request transcript pending payment	43,003
Create electronic transcript invoice	41,054
Pay electronic transcript invoice	36,435
Unsuccessful electronic payment	2,318
Participating in Campus Life	
Submit an electronic vote	5,045

**Prepared by the Office of the Assistant Vice-President,
Government, Institutional and Community Relations
University of Toronto**

**Printed in Canada
by SLG Group Commercial Printing
March 2013**