

02 DEC 21

EGYD AD 2.1 - LOCATION INDICATOR AND NAME

EGYD - CRANWELL / CRANWELL NORTH

EGYD AD 2.2 - AERODROME GEOGRAPHICAL AND ADMINISTRATIVE DATA

1	ARP Co-ordinates and site at AD:	N53 01 47.04 W000 29 33.91 Mid-point of Runway 08/26.
2	Direction and distance from City:	3nm N of Sleaford.
3	Elevation/Reference Temperature:	Cranwell: 222ft, Cranwell North: 210ft / 21°C
4	Magnetic Variation / Annual Change:	0° 17'W (NOV 19) / 0° 12' decreasing
5	Geoid Undulation at AD Elev Position:	----
6	AD Administration: Address: Telephone: Fax: E-mail: Web site:	Royal Air Force Royal Air Force College Cranwell Cranwell Sleaford Lincolnshire NG34 8HB Mil: 95751 7377/7378. Civ: 01400 26 7377. ATC ext 7281/7282. Mil(ATC): 95751 7042. Civ(ATC): 01400 26 7042. Station Ops: CRN-ops-ops@mod.gov.uk Cranwell ATC: CRN-Ops-ATC-Support@mod.gov.uk ---
7	Types of Traffic Permitted (IFR/VFR):	Cranwell: IFR/VFR, Cranwell North: VFR.
8	Remarks:	Cranwell North ARP co-ordinates N53 02 34.92 W000 29 30.83.

03 NOV 22

EGYD AD 2.3 - OPERATIONAL HOURS		
1	AD:	Cranwell: 0800L-1730L Mon-Thu, 0800L-1700L Fri, 0900L-1700L Sat-Sun or as required by EMUAS or 7AEF. Eight weeks per year night-flying Tue-Thu 1730L-2359L. Cranwell North: Mon-Sun daylight hours (HJ).
2	Customs and Immigration:	Cranwell: HO. Cranwell North: Nil.
3	Health and Sanitation:	Cranwell: Nil. Cranwell North: Nil.
4	AIS Briefing Office:	Cranwell: HO. Cranwell North: Nil.
5	ATS Reporting Office (ARO):	Cranwell: HO. Cranwell North: Nil.
6	MET Briefing Office:	Cranwell: 0530L-1730L Mon-Thu or as required by 3FTS. 0530L-1700L Fri or as required by 3FTS. 0630L-1700L Sat-Sun or as required by 6FTS. Public Holidays as required. ONWH: Defence Guidance Unit, 03067986119. Cranwell North: Nil.
7	ATS:	Cranwell: 0800L-1730L Mon-Thu, 0800L-1700L Fri, 0900L-1700L Sat-Sun or as required by EMUAS or 7AEF. Eight weeks per year night-flying Tue-Thu 1730L-2359L. No visiting AC or PDs at weekends. Cranwell North: Nil.
8	Fuelling:	Cranwell: HO. Cranwell North: Nil.
9	Handling:	Cranwell: HO. Cranwell North: Nil.
10	Security:	Cranwell: H24. Cranwell North: Nil.
11	De-icing:	Cranwell: Nil. Cranwell North: Nil.
12	Remarks:	Cranwell: 24 Hours PPR Required. No armed air systems may be accepted, with the exception of pre-declared RW arriving with weapons in an unloaded state. Very limited. Subject to prior arrangement. No Rotors Running Refuels / Hot Refuels. Ascent Operations telephone number 01400 227 104. No LARS Service. Glider operations take place on the North Airfield ad-hoc during the week, routinely weekends and evenings. Gliders can be contacted on glider frequency 129-980. Paramotor activity takes place weekends and evenings. No7 AEF cadet flying and EMUAS usually from Wed to Sun although times may vary in the Summer. Cranwell North: No LARS service. Glider operations take place on the North Airfield ad-hoc during the week, routinely weekends and evenings. Gliders can be contacted on glider frequency 129-980. Paramotor activity takes place weekends and evenings.

EGYD AD 2.4 - HANDLING SERVICES AND FACILITIES (Cranwell Only)		
1	Cargo Handling Facilities:	Cranwell: Fork Lifts. Cranwell North: Nil.
2	Fuel/Oil /Hydraulic Types:	Cranwell: F-18, F34. Cranwell North: Nil.
3	Fuelling Facilities/Capacity:	Cranwell: 1 x 20,000 Ltr LCAR and 2 x 5,000 Ltr SCAR/AST. Cranwell North: Nil.
4	Oxygen:	Cranwell: Nil. Cranwell North: Nil.
5	De-Icing Facilities:	Cranwell: Nil. Cranwell North: Nil.
6	Starting Units:	Cranwell: GPUs available upon request. Cranwell North: Nil.
7	Hangar space for visiting aircraft:	Cranwell: Very limited. Subject to prior arrangement. Cranwell North: Nil.
8	Repair facilities for visiting aircraft:	Cranwell: Nil. Cranwell North: Nil.
9	Remarks:	Cranwell: Nil. Cranwell North: Nil.

EGYD AD 2.5 - PASSENGER FACILITIES (Cranwell Only)		
1	Accommodation:	Cranwell: Accommodation in Service messes only. Cranwell North: Accommodation in Service messes only.
2	Medical Facilities:	Cranwell: Medical Centre. Cranwell North: Medical Centre.
3	Remarks:	Cranwell: Nil. Cranwell North: Nil.

EGYD AD 2.6 - RESCUE AND FIRE FIGHTING SERVICES		
1	AD Category for Fire Fighting:	Cranwell: ICAO 5 during normal weekday AD opening hours. ICAO 3 when AD open for night flying. ICAO 3 during weekend AD opening hours. When AD is closed, domestic cover can provide the equivalent of ICAO 3 Cranwell North: Nil.
2	Rescue Equipment:	Cranwell: As required for ICAO 5 Cranwell North: Nil.
3	Capability for removal of disabled aircraft:	Cranwell: Nil. Cranwell North: Nil.

EGYD AD 2.7 - SEASONAL AVAILABILITY - CLEARING		
1	Type of Clearing equipment:	Cranwell: 4 Airfield De-Icing Trailers. Gen2 de-icer. Cranwell North: Nil.
2	Remarks:	Cranwell: Braking action assessment by Mu-Meter. Latest available information from ATC. Cranwell North: Nil.

EGYD AD 2.8 - APRONS, TAXIWAYS AND CHECK LOCATIONS DATA					
1	Cranwell: Apron surfaces:	Apron	Surface	Strength	
		Hangars 265, 266	Concrete	LCG IV	
		Hangars 29, 30	Concrete	PCN 20 R/C/W/T	
	Main ASP	Concrete	PCN 20 R/C/W/T		
	Cranwell North: Apron surfaces:	Nil.	Nil.	Nil.	
2	Cranwell: Taxiway width, surface and strength:	Taxiway	Width	Surface	Strength
		Alpha	15m	Asphalt/ Concrete	PCN 25 F/B/W/T (Main asphalt length) PCN 20 R/C/W/T (Concrete sections)
		Bravo	15m	Concrete	PCN 20 R/C/W/T
		Charlie	15m	Asphalt/ Concrete	PCN 25 F/B/W/T (Main asphalt length) PCN 20 R/C/W/T (Concrete sections)
		Delta	15m	Asphalt/ Concrete	PCN 25 F/B/W/T (Main asphalt length) PCN 20 R/C/W/T (Concrete sections)
		Echo	15m	Asphalt	LCG IV
		Link to 08-26	15m	Asphalt	PCN 55 R/C/W/T
		Cranwell North: Taxiway width, surface and strength:	Nil.	Nil.	Nil.
3	Altimeter Check Location and Elevation:	Cranwell: N/A. Cranwell North: N/A.			
4	VOR Checkpoints: INS Checkpoints:	Cranwell: N/A. Cranwell North: N/A.			
5	Remarks:	Cranwell: Nil. Cranwell North: Nil.			

EGYD AD 2.9 - SURFACE MOVEMENT GUIDANCE AND CONTROL SYSTEM MARKINGS		
1	Use of aircraft stand ID signs: Taxiway guide lines & visual docking/parking guidance system of aircraft stands:	Cranwell: Nil. Cranwell North: Nil. Cranwell: Yellow taxiway markings & parking slot guidance with ground marshallers Cranwell North: Nil.
2	Cranwell: Runway & taxiway markings & lighting:	Runway: Standard markings. Aiming point and Touch down zone marker not present on Rwy 26/08. Taxiway: Standard markings
	Cranwell North: Runway & taxiway markings & lighting:	Runway: Nil. Taxiway: Nil.
3	Stop Bars and runway guard lights:	Cranwell: Nil. Cranwell North: Nil.
4	Other runway protection measures:	Cranwell: Nil. Cranwell North: Nil.
5	Remarks:	Cranwell: CAUTION: Touch Down Zone markings and Aiming Point Markings are not present. This is non compliant with RA 3514. Rwy 08/26 hold points are too close to the Rwy (AOHL 22/08). Cranwell North: Nil.

EGYD AD 2.10 - AERODROME OBSTACLES

Please refer to the "Measured Height Survey" data on the UK Mil AIP website www.aidu.mod.uk/aip.

EGYD AD 2.11 - METEOROLOGICAL INFORMATION		
1	Associated MET Office:	Cranwell: Cranwell Cranwell North: Nil.
2	Hours of service: MET Office outside hours:	Cranwell: 0530L-1730L Mon-Thu or as required by 3FTS. 0530L-1700L Fri or as required by 3FTS. 0630L-1700L Sat-Sun or as required by 6FTS. Public Holidays as required. ONWH: Defence Guidance Unit, 03067986119. Cranwell North: Nil.
3	Office responsible for TAF information: Periods of validity:	Cranwell: Cranwell Cranwell North: Nil. Cranwell: TAF validity 9 hours. Cross section validity 12 hours. Cranwell North: Nil.
4	Type of landing forecast: Interval of issuance:	Cranwell: TREND/TAF Cranwell North: Nil. Cranwell: Trend updated every 30 mins. TAF updated routinely every 3 hours unless amended. Cranwell North: Nil.
5	Briefing/consultation provided:	Cranwell: Personal/ Telephone/ Self-briefing Cranwell North: Nil.
6	Flight documentation: Language(s) used:	Cranwell: Charts/ TAFs/ METARs/ Warnings Cranwell North: Nil. Cranwell: Abbreviated plain language text Cranwell North: Nil.
7	Charts and other information available for briefing or consultation:	Cranwell: Charts/TAFs/METARs/Warnings/Cross Section/ briefing slides. Cranwell North: Nil. Cranwell: Abbreviated plain language text. TAF/METAR codes. Cranwell North: Nil.
8	Supplementary equipment available for providing information:	Cranwell: PC Data display, MOMIDS. MORTy. Cranwell North: Nil.
9	ATS units provided with information:	Cranwell: Barkston Heath Cranwell North: Nil.
10	Additional information (limitation of services etc):	Cranwell: Nil. Cranwell North: Nil.
11	Remarks:	Cranwell: Met Office Cranwell forecaster telephone extension (95751 7262). ONWH: Defence Guidance Unit, 03301354718 . Wind direction indicators are not illuminated (AOHL 22/08) Cranwell North: Nil.

21 MAR 24

EGYD AD 2.12 - RUNWAY PHYSICAL CHARACTERISTICS					
Designations Runway Number	True bearing	Dimensions of Runway (m)	Strength (PCN) and surface of Runway and stopway	Threshold co-ordinates	Threshold elevation highest elevation of TDZ of precision APP Rwy
1	2	3	4	5	6
Cranwell:					
08	082.69°	2081 x 47	PCN 25 F/B/W/T (Main asphalt length) PCN 20 R/C/W/T (Concrete end)	N53 01 43-43 W000 30 20-57	217-68ft TDZE 217-68ft
26	262.71°	2081 x 47	PCN 25 F/B/W/T (Main asphalt length) PCN 20 R/C/W/T (Concrete end)	N53 01 50-93 W000 28 43-44	180-31ft TDZE 196-36ft
01	008.20°	1462 x 45	PCN 25 F/B/W/T (Main asphalt length) PCN 20 R/C/W/T (Concrete end)	N53 01 15-79 W000 29 07-53	176-51ft TDZE 186-81ft
19	188.20°	1462 x 45	PCN 25 F/B/W/T (Main asphalt length) PCN 20 R/C/W/T (Concrete end)	N53 02 02-60 W000 28 56-35	182-41ft TDZE 187-20ft
08R	083-03°	761 x 25	Grass	N53 01 42-51 W000 29 53-21	209-0ft -
26L	263-04°	761 x 25	Grass	N53 01 45-49 W000 29 12-68	191-0ft -
Cranwell North:					
06	064°21'28"	1198 x 30	Nil	N53 02 24-94 W000 30 01-44	209-58ft TDZE 209-58ft
24	244°22'15"	1198 x 30	Nil	N53 02 41-71 W000 29 03-45	181-07ft TDZE 187-30ft
03	030°28'09"	1104 x 30	Nil	N53 02 21-12 W000 29 44-24	198-88ft TDZE 198-36ft
21	210°28'33"	1104 x 30	Nil	N53 02 51-90 W000 29 14-19	182-19ft TDZE 198-88ft
Desig & Slope of Rwy/Swy	Stopway Dimensions (m)	Clearway Dimensions (m)	Strip Dimensions (m)	OFZ	
7	8	9	10	11	
08 - 0-56%D	Nil	27 x 150	2141 x 300	-	
26 - 0-56%U	Nil	24 x 150	2141 x 300	-	
01 - 0-10%U	Nil	Nil	1521 x 300	-	
19 - 0-10%D	Nil	Nil	1521 x 300	-	
08R	Nil	Nil	791 x 36	-	
26L	Nil	Nil	791 x 36	-	
12	Arresting Systems				
RAF Cranwell has removed the Arrestor Barriers from RWY 26/08. Small concrete pads and exposed steel connections (3-4 inches) are awaiting removal from the sites where the barriers were fixed into the ground.					
13	Remarks	1. Variable southern airfield strip due to cutting programme. 2. Visitors are not permitted to use Taxiway Echo. 3. CAUTION: Touch Down Zone markings and Aiming Point Markings are not present on all South Airfield Rwys. This is non compliant with RA 3514. MAA waiver in place until 31 Dec 2034. 4. RESAs not present (AOHL 22/08) iaw RA 3511.			

EGYD AD 2.13 - DECLARED DISTANCES					
Runway	TORA (m)	TODA (m)	ASDA (m)	LDA (m)	Remarks
1	2	3	4	5	6
Cranwell:					
08	2081	2108	2081	1916	Nil.
26	2081	2106	2081	1990	Nil.
01	1461	1461	1461	1461	Nil.
19	1461	1461	1461	1461	Nil.
08R	761	761	761	761	Grass strip variable due to cut program.
26L	761	761	761	761	Grass strip variable due to cut program.
Cranwell North:					
06	1198	1198	1198	1198	Nil.
24	1198	1198	1198	1198	Nil.
03	1104	1104	1104	1104	Nil.
21	1104	1104	1104	1104	Nil.

EGYD AD 2.14 - APPROACH AND RUNWAY LIGHTING								
Runway	Approach lighting Type Length Intensity	Threshold lighting Colour Wingbars	PAPI VASIS Angle Distance from Thr (MEHT)	TDZ lighting Length	Runway Centreline lighting Length Spacing Colour Intensity	Runway edge lighting Length Spacing Colour Intensity	Runway End lighting Colour Wingbars	Stopway lighting Length(m) Colour
1	2	3	4	5	6	7	8	9
Cranwell:								
08	CL2B 1,500ft/457m HI	Green HI Uni	PAPI 3° --- (28ft)	Nil	Nil	Elevated but flush at ORP and intersection White HI Uni, 30m White LI Omni, 90m	Red	Nil
26	CL5B 3,000ft/915m HI	Green HI Uni	PAPI 3° --- (28ft)	Nil	Nil	Elevated but flush at ORP and intersection White HI Uni, 30m White LI Omni, 90m	Red	Nil
01	Nil	Green HI Uni	PAPI 3° --- (28ft)	Nil	Nil	Elevated but flush at intersection White HI Uni, 30m White LI Omni, 90m	Red	Nil
19	Nil	Green HI Uni	PAPI 3° --- (28ft)	Nil	Nil	Elevated but flush at intersection White HI Uni, 30m White LI Omni, 90m	Red	Nil
Cranwell North:								
Nil	Nil	Nil	Nil	Nil	Nil	Nil	Nil	Nil
10	Remarks:	Cranwell: CAUTION: High Intensity Side Lights Rwy 08/26 are not compliant with RA3515. Pattern and elevation of Rwy 08/26 approach lights not compliant (AOHL 22/08). MAA waiver in place till 31 Dec 2034.						

15 JUN 23

EGYD AD 2.15 - OTHER LIGHTING, SECONDARY POWER SUPPLY		
1	A Bn/I Bn location, characteristics and hours of operation:	Cranwell: I Bn: N53 01 18-89 W000 29 17-62 'CW' - • - • • - - HO. Red. Cranwell North: Nil.
2	Anemometer location and lighting:	Cranwell: N53 01 34-20 W000 28 24-00. Red Obstruction light. Cranwell North: Nil.
3	Taxiway edge and centreline lighting:	Cranwell: Blue edge lighting. Cranwell North:
4	Secondary power supply: Switch-over time:	Cranwell: Yes. Cranwell North: Nil. Cranwell: No-break system. Cranwell North: Nil.
5	Remarks:	Cranwell: Taxiway edge light spacing not compliant on curved sections (AOHL 22/08) Cranwell North: Nil.

EGYD AD 2.16 - HELICOPTER LANDING AREA		
1	Location:	Cranwell: HLS Orange Unavailable TFN. Ref: Mil AIP SUPP 001_23. Cranwell North: Nil.
2	Elevation:	Cranwell: HLS Orange Unavailable TFN. Ref: Mil AIP SUPP 001_23. Cranwell North: Nil.
3	Lighting:	Cranwell: HLS Orange Unavailable TFN. Ref: Mil AIP SUPP 001_23. Cranwell North: Nil.
4	Remarks:	Cranwell: 1. HLS Orange Unavailable TFN. Ref: Mil AIP SUPP 001_23.

EGYD AD 2.17 - ATS AIRSPACE (<i>Cranwell / Cranwell North Combined</i>)		
Cranwell MATZ. Please refer to the Civ AIP, ENR 2.2, Para 2.4. https://nats-uk.ead-it.com/cms-nats/opencms/en/Publications/AIP/		
Cranwell ATZ. Please refer to the Civ AIP, ENR 2.2. https://nats-uk.ead-it.com/cms-nats/opencms/en/Publications/AIP/		

EGYD AD 2.18 - ATS COMMUNICATION FACILITIES (Cranwell / Cranwell North Combined)						
Service Designation	Callsign	Frequency MHz	Hours of Operation		Remarks	
			Winter	Summer		
1	2	3	4		5	
MAS	Swanwick Mil	259-600			* NATO Common Frequency. Available on request only. Cranwell North: (M) MATZ Crossing Frequency. Gliders operate HJ, 129-980 A/G Stn	
APP	Cranwell Approach	388-775(ICF) 123-300* 124-45(M)	HO	HO	* NATO Common Frequency. Available on request only. Cranwell North: (M) MATZ Crossing Frequency. Gliders operate HJ, 129-980 A/G Stn	
ZONE / DEP	Cranwell Zone/ Departures	355-575 124-450 232.350*	HO	HO	*Overload Frequency. Available only when instructed by ATC.	
DIR	Cranwell Director	240-950 123-300*	HO	HO	* NATO Common Frequency. Available on request only.	
PAR	Cranwell Talkdown	255-675 123-300* 369-450	HO	HO	* NATO Common Frequency. Available on request only.	
SRA	Cranwell/Barkston Talkdown	264.900 278.775 123.300*	HO	HO	Used for SRAs to both Cranwell and Barkston. *NATO Common Frequency. Available on request only.	
TWR	Cranwell Tower	370-850* 125-050**	HO	HO	* Weekdays ** Weekends (monitored weekdays)	
GND	Cranwell Ground	344-125 121-775	HO	HO		
ATIS	Cranwell	279-275 126-325	HO	HO	Ext 7182	

Remarks:
 1. Gliders Operate at Cranwell North on 129-980 A/G Stn.
 2. All AC will now taxi on the Crn ground VHF frequency.

EGYD AD 2.19 - RADIO NAVIGATION AND LANDING AIDS							
Type Category (Variation)	Ident	Frequency	Hours of Operation		Antenna Site co-ordinates	Elevation of DME Transmitting antenna	Remarks
			Winter	Summer			
			# and by arrangement				
1	2	3	4		5	6	7
Cranwell:							
TACAN	*CWZ	Ch 121X 117-400	HO	HO	N53 01 43-22 W000 29 07-84	218ft	Rwy 08: DME CWZ reads 0-73d at Thld. Rwy 26: DME CWZ reads 0-28d at Thld.
NDB	CWL	423	HO	HO	N53 01 34-74 W000 29 20-63		
UDF	Cranwell APP	388-775	HO	HO	N53 01 23-40 W000 19 15-60		
ILS/DME Rwy 26	I-CW	108-500 Ch 22X	HO	HO	N53 01 54-21 W000 28 53-85	186-024ft	QFU 262° DME reads 0d at Thld.
		Glidepath	329-900			N53 01 54-31 W000 28 53-88	186-024ft
Localizer		108-500			N53 01 41-05 W000 30 51-44	229-331ft	LOC 262°
Cranwell North:							
Nil	Nil	Nil	Nil	Nil	Nil	Nil	Nil

EGYD AD 2.19 - RADIO NAVIGATION AND LANDING AIDS

Remarks:

Cranwell:

1. TACAN: TACAN Unlocks may be observed in sectors R201 - R204, R282 - R289, R304 - R308 and R347 - R350.
2. Subject to the required visual references being achieved at DH, ILS beam structure suitable for auto coupled approaches to the Rwy thld.
3. MP monthly ‡ 0800 - 0820 4th Fri.

Cranwell North: Nil.

4. SRA approaches not available to tutors flying into RAF Cranwell.

EGYD AD 2.20 - LOCAL TRAFFIC REGULATIONS

1	<p>Airport regulations</p> <p>Cranwell: None specified. Cranwell North: Nil.</p>
2	<p>Ground Movement</p> <p>Cranwell: Aircraft must not enter the Northern taxiway until cleared to do so by Cranwell Ground Controller. Cranwell North: Nil.</p>
3	<p>CAT II/III Operations</p> <p>Cranwell: Nil. Cranwell North: Nil.</p>
4	<p>Warnings</p> <p>Cranwell:</p> <ol style="list-style-type: none"> a. Overrun on Rwy 08 has road 305ft / 95m from barrier. b. Airfield may be active for night flying outside normal hours with ATC staffed. Additionally, outside of normal op hours light aircraft operate on airfield using 124.450 A/G Stn (not always staffed), gliders operate on North of airfield using 129.980 A/G Stn. c. Owing to adjacent aerodromes and overlapping radar patterns, ac transiting through or overflying the Barkston MATZ will be subject to a Traffic or Basic service; similarly ac on Radar Recovery to Cranwell may not receive a deconfliction service. AC are to remain outside of the Barkston Heath ATZ at all times. d. In the event of barrier engagement, frangible approach lights are located in the Stopway prior to the barrier on RWY 26. <p>Cranwell North:</p> <ol style="list-style-type: none"> e. Pyrotechnic firing in adjacent wood. f. Glider winch launch site active 1700 (1600 Summer)-SS Mon-Fri, HJ Sat, Sun and Public Holidays. g. Glider flying and aero tows will take place up to 3000ft on weekday evenings, when Cranwell is not flying, also at weekends and holidays. h. Paramotor activity will take place during weekday evenings, when Cranwell is not flying, also at weekends and holidays. i. The North Airfield is not visible to ATC pers. Pilots using the North Airfield must maintain a good lookout at all times even when ATS is open (AOHL 22/04). j. The North Airfield is frequently used for non-aviation related training. Planned aircraft movements will be deconflicted with ground activity by Stn Ops (AOHL 22/07).
5	<p>Helicopter Operations</p> <p>Cranwell: Military Heli Ops not permitted below 250ft MSD without permission from Cranwell Ops. Cranwell North: Nil.</p>
6	<p>Use of Runways</p> <p>Cranwell:</p> <ol style="list-style-type: none"> a. Rwy 01/19 unsuitable for fast/heavy aircraft. b. Runway Caravan unavailable outside operational hours. c. Caution: braking action significantly reduced on Rwy when wet. <p>Cranwell North:</p> <ol style="list-style-type: none"> d. All visiting powered aircraft must use the main RAF Cranwell aerodrome.
7	<p>Training</p> <p>Cranwell: None specified. Cranwell North: Nil.</p>

07 SEP 23

EGYD AD 2.21 - NOISE ABATEMENT PROCEDURES

Cranwell:**All Runways:**

- a. On departure, climb straight ahead to 1000ft QFE before turning.
- b. No rotary approaches to main ASP over built up area North of Rwy 08/26.
- c. RAFC Saddle Club - 530158N 0003058W
- d. Cranwell Village - 532014N 0002747W
- e. Caythorpe Elms Farm Equestrian Centre - 5301081N 0003404W

Cranwell North:

- f. Aircraft are to avoid overflying local villages and RAF Cranwell domestic area.

EGYD AD 2.22 - FLIGHT PROCEDURES

1	Procedures for in bound aircraft:	Cranwell: See TAP Charts. Cranwell North: Acft are to contact Cranwell App 280-775, 124-450, 5 min or 10nm inbound.
2	Departures:	Cranwell: See TAP Charts. Cranwell North: Nil.
3	Radio Communication Failure:	Cranwell: See TAP Charts. Cranwell North: Nil.
4	Missed Approach Procedure:	Cranwell: See TAP Charts. Cranwell North: Nil.
5	Aerodrome Operating Minima:	Cranwell: See TAP Charts. Cranwell North: See TAP Charts.
6	Instrument Approach Procedures (IAP) for this aerodrome are established outside controlled airspace.	

EGYD AD 2.23 - ADDITIONAL INFORMATION

Cranwell:

CAUTION: High Intensity Side Lights are non compliant with RA 3515.

1. Medical Response Vehicles: 1x Airfield Medical Response Vehicle.

2. Due to minimal staffing and increased aerodrome activity at weekends, only aircraft landing within the MATZ/ATZ will be given MATZ penetration, overflight of Cranwell MATZ should be avoided as Traffic Information may not be available due to Controller workload.

3. Public Road in the undershoot of RWY 26. A very shallow approach could infringe the safeguarded area (AOHL 22/13).

4. In order to reduce RT loading, Cranwell Aerodrome Controllers will not state 'Caution, wake turbulence the recommended distance is (number) miles' whenever an aircraft on VFR approach does not appear to have the requisite separation behind an aircraft of the same wake turbulence category

Cranwell North: Nil.

21 MAR 24

EGYE AD 2.24 - CHARTS RELATING TO THIS AERODROME

Terminal Approach Procedure Charts

D1	Aerodrome (Cranwell) Chart	AD 2 - EGYD - 1 - 13
D2	Aerodrome (Cranwell North) Chart	AD 2 - EGYD - 1 - 14
G1	Rwy 01/08 MID	AD 2 - EGYD - 1 - 15
G2	Rwy 19/26 MID	AD 2 - EGYD - 1 - 16
K1	Radar Procedures	AD 2 - EGYD - 1 - 17
K2	Radar Procedures	AD 2 - EGYD - 1 - 18
K3	TAC to PAR Rwy 08 - 2.5° (Cat A, B)	AD 2 - EGYD - 1 - 19
K4	TAC to PAR Rwy 08 - 2.5° (Cat C, D, E)	AD 2 - EGYD - 1 - 20
K5	TAC to PAR Rwy 08 - 3° (Cat A, B)	AD 2 - EGYD - 1 - 21
K6	TAC to PAR Rwy 08 - 3° (Cat C, D, E)	AD 2 - EGYD - 1 - 22
K7	TAC to PAR Rwy 26 - 2.5°	AD 2 - EGYD - 1 - 23
K8	TAC to PAR Rwy 26 - 3°	AD 2 - EGYD - 1 - 24
K9	PAR Rwy 08 - 2.5°	AD 2 - EGYD - 1 - 25
K10	PAR Rwy 08 - 3°	AD 2 - EGYD - 1 - 26
K11	PAR Rwy 26 - 2.5°	AD 2 - EGYD - 1 - 27
K12	PAR Rwy 26 - 3°	AD 2 - EGYD - 1 - 28
K13	SRA Rwy 08	AD 2 - EGYD - 1 - 29
K14	SRA Rwy 26	AD 2 - EGYD - 1 - 30
K15	ATC Surveillance MNM Alt	AD 2 - EGYD - 1 - 31
K16	ATC Surveillance MNM Alt	AD 2 - EGYD - 1 - 32
M1	NDB 1 to ILS Rwy 26	AD 2 - EGYD - 1 - 33
M2	NDB 3 to ILS Rwy 26	AD 2 - EGYD - 1 - 34
M3	TAC to ILS Rwy 26	AD 2 - EGYD - 1 - 35
P1	NDB/DME Rwy 08 (Cat A, B, C)	AD 2 - EGYD - 1 - 36
P2	NDB/DME Rwy 26 (Cat A, B, C)	AD 2 - EGYD - 1 - 37
P3	NDB Rwy 08 (Cat A, B, C)	AD 2 - EGYD - 1 - 38
P4	NDB Rwy 26 (Cat A, B, C)	AD 2 - EGYD - 1 - 39
R1	TAC Rwy 08 (Cat A, B)	AD 2 - EGYD - 1 - 40
R2	TAC Rwy 08 (Cat C, D, E)	AD 2 - EGYD - 1 - 41
R3	TAC to Rwy 26	AD 2 - EGYD - 1 - 42

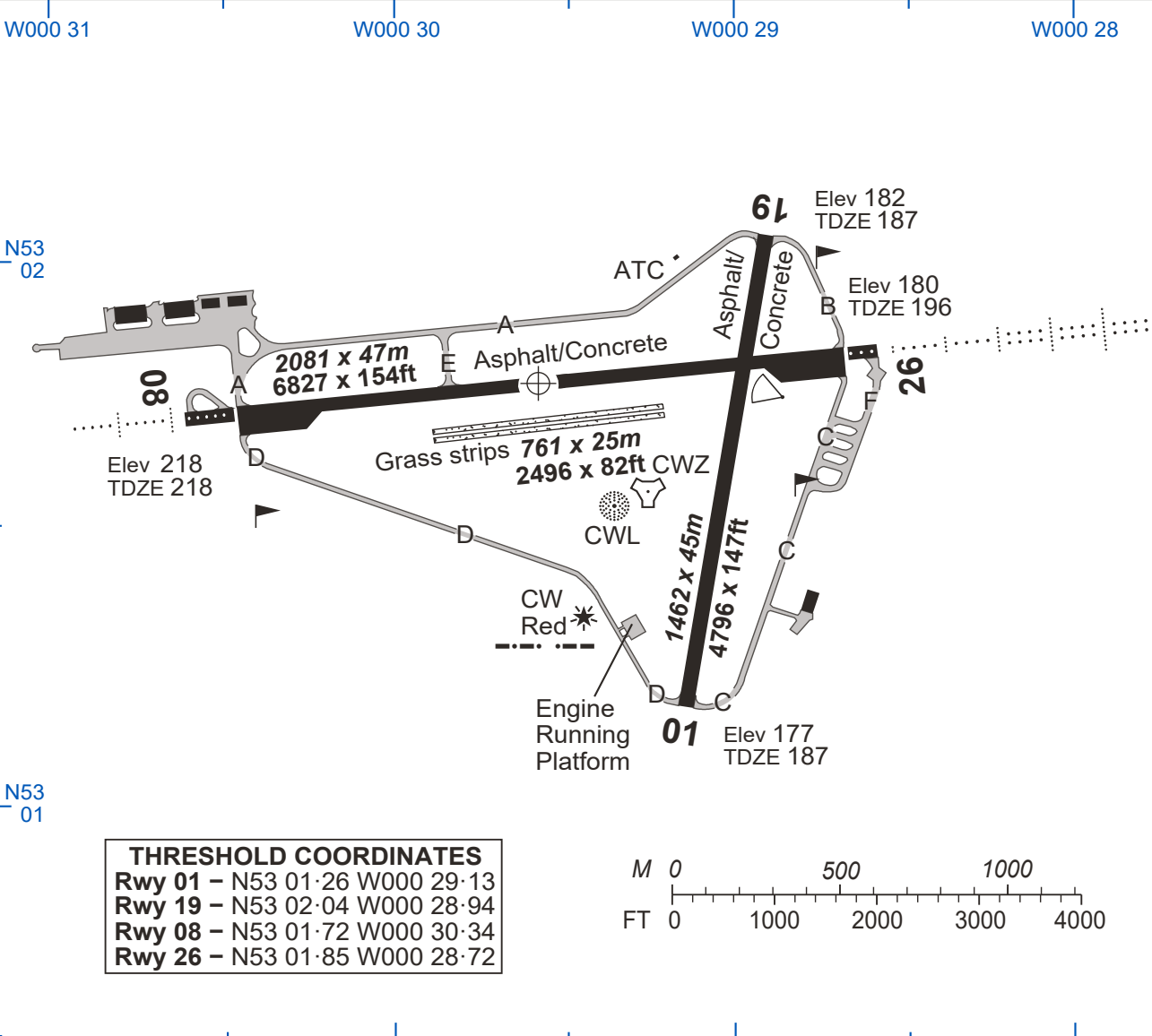
AERODROME

CRANWELL

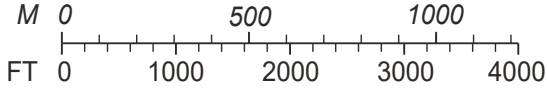
Elev 222	Var 0°	ARP	N53 01.78 W000 29.57 (WGS 84)	21 MAR 24	D1
CRANWELL GROUND 344.125 121.775		TOWER 125.05 370.850		APPROACH 388.775 124.45	
				ATIS 126.325 279.275	

EGYD/- ENGLAND

Changes: Barriers removed



THRESHOLD COORDINATES	
Rwy 01	- N53 01.26 W000 29.13
Rwy 19	- N53 02.04 W000 28.94
Rwy 08	- N53 01.72 W000 30.34
Rwy 26	- N53 01.85 W000 28.72



RWY	SLOPE	LDA m/ft	APP LGT		RWY LGT
01 (008°T) 19 (188°T)	0.10%U 0.10%D	1461/4793	P3° (28)	NIL	RTHL:REDL(L):RENL
08 (083°T) 26 (263°T)	0.56%D 0.56%U	1916/6286 1990/6528	P3° (28)	CL-2B (H) CL-5B (H)	RTHL:REDL(H):RENL

- Rotating white beacon on twr of College buildings North of Rwy 08 THR not within chart coverage; helis not to overfly.
- Circuits - 1000ft, light acft 800ft.
- Grass strips 207ft from rwy edge.
- Glider winch launch site active 1700 (1600 Summer) - SS Mon-Fri, HJ Sat, Sun and PH.
- Glider flying and aero tows will take place up to 3000ft on Wkday evenings, when Cranwell is not flying, also at Wkends and holidays.
- Paramotor activity will take place during Wkday evenings, when Cranwell is not flying, also at Wkends and holidays.
- MATZ: Heli ops **not** permitted below 250ft mnm separation distance, without permission of Cranwell Ops.
- Rotaries approaching the Main ASP from the East are to ensure they overfly the yellow air taxi markers. These markers are situated in the grass to the South of the Main ASP.
- Visitors are not permitted to use Twy E.
- Touch Down Zone and Aiming Point markings are not present.

No 1 AIDU Last Amended 15 FEB 24

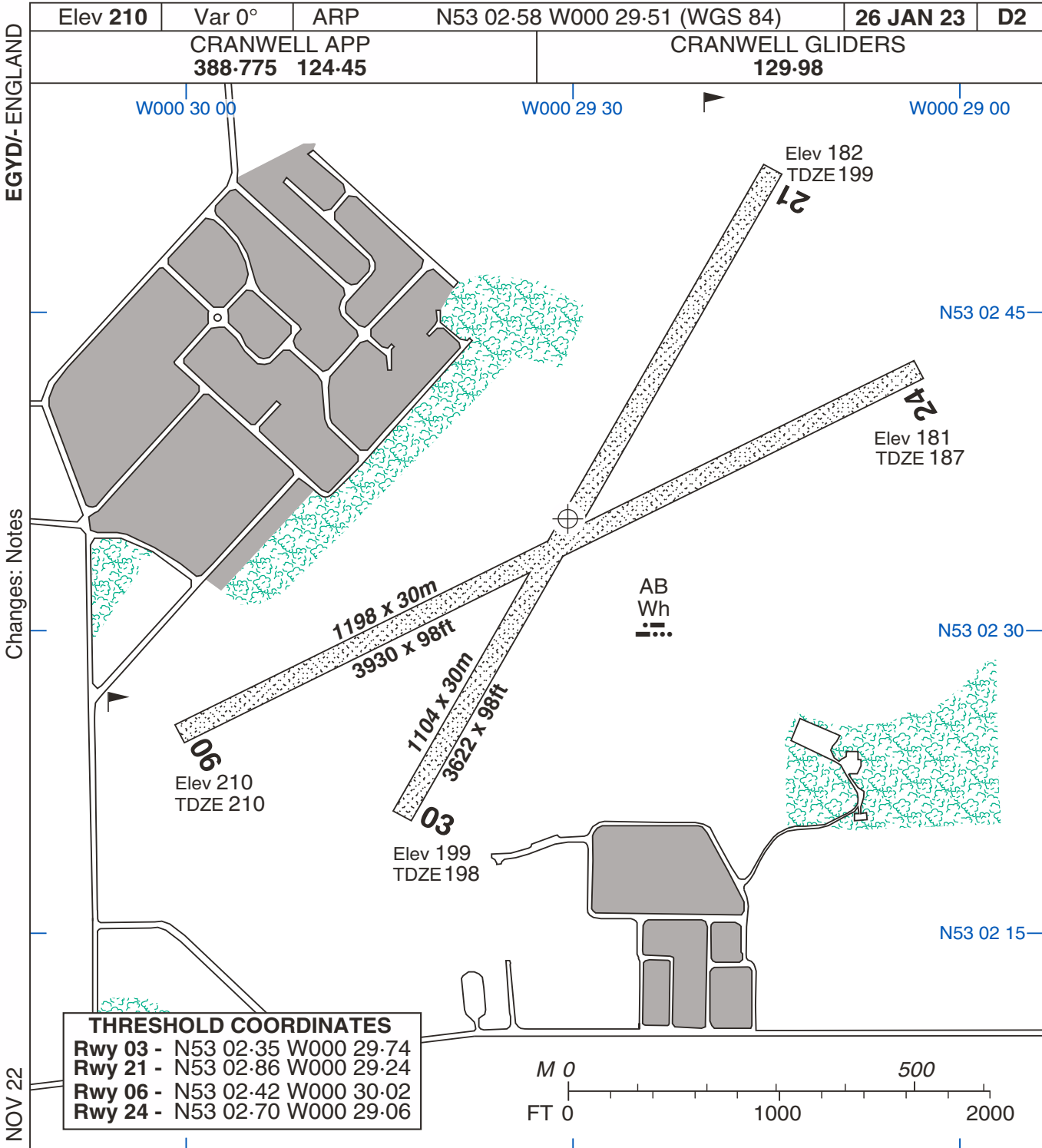
© UK MOD Crown Copyright 2024. No 1 AIDU is not responsible for, and claims no right to, the content or accuracy of 3rd party documents/information.

CRANWELL

AERODROME

AERODROME

CRANWELL NORTH



EGYD/-ENGLAND

Changes: Notes

No1 AIDU Last Amended 17 NOV 22

© UK MOD Crown Copyright 2022. No1 AIDU is not responsible for, and claims no right to, the content or accuracy of 3rd party documents/information.

RWY	SLOPE	LDA m/ft	APP LGT		RWY LGT
06 (064°T) 24 (244°T)	NIL	1198/3930	NIL	NIL	NIL
03 (030°T) 21 (210°T)	NIL	1104/3622	NIL	NIL	NIL

- CAUTION.** Pyrotechnic firing in adjacent wood.
- The North Airfield is not visible to ATC Personnel. Pilots using the North Airfield must maintain a good lookout at all times even when ATC is open.
- The North Airfield is frequently used for non-aviation related training. Planned acft movements will be deconflicted with ground activity by Stn Ops.

CRANWELL NORTH

AERODROME

Rwy 01/08 MID

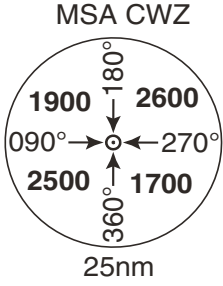
CRANWELL

EGYD/- ENGLAND

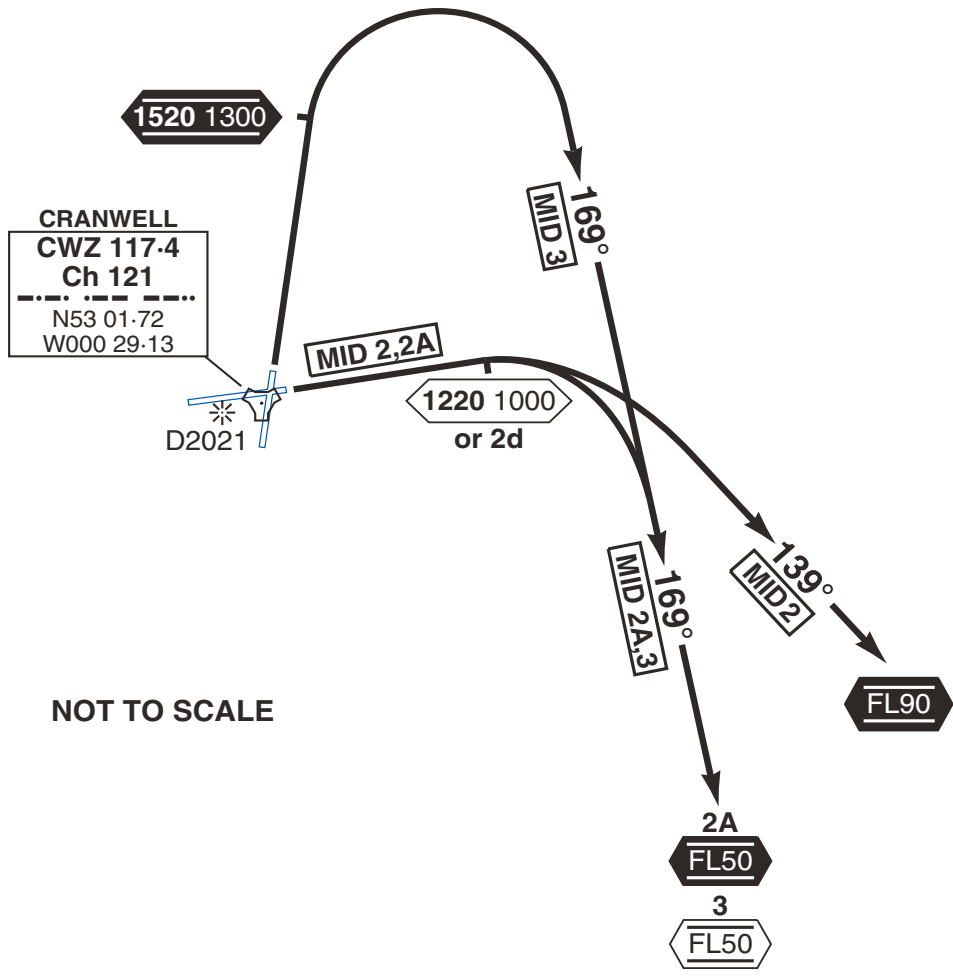
Changes: Annual Maintenance

No1 AIDU Last Amended 17 NOV 22

Elev 222	Var 0°	TA 3000	TRL ATC		26 JAN 23	G1
CRANWELL GND 344.125 121.775		TOWER 125.05 370.850		DEPARTURES 355.575 124.45	DIRECTOR 240.950	APPROACH 388.775 124.45
						ATIS 126.325 279.275



TRA 003
FL195 - FL245



NOT TO SCALE

1. Close in obstacles exist.
2. MID terminates at CWZ 25d.
3. Requirement for onward routeings at the end of the MID are to be pre-notified to ATC before TKOF.
4. When Cranwell are operating on Rwy 01 with simultaneous instrument approaches to Rwy 26, MID 3 will not be available and all instrument departures will be as directed by ATC.

MID	RWY	ROUTEING (Including Mnm Noise Routes)
2	08	Ahead on Rwy Tr to 1220 1000 or 2d, whichever later, then right onto Tr 139°, climbing to FL90 .
2A	082°M	Ahead on Rwy Tr to 1220 1000 or 2d, whichever later, then right onto Tr 169°, climbing to FL50 .
3 ⁴	01 008°M	Ahead on Rwy Tr to 1520 1300 , level turn right onto Tr 169° and, when directed by ATC, climb to FL50.

© UK MOD Crown Copyright 2022. No1 AIDU is not responsible for, and claims no right to, the content or accuracy of 3rd party documents/information.

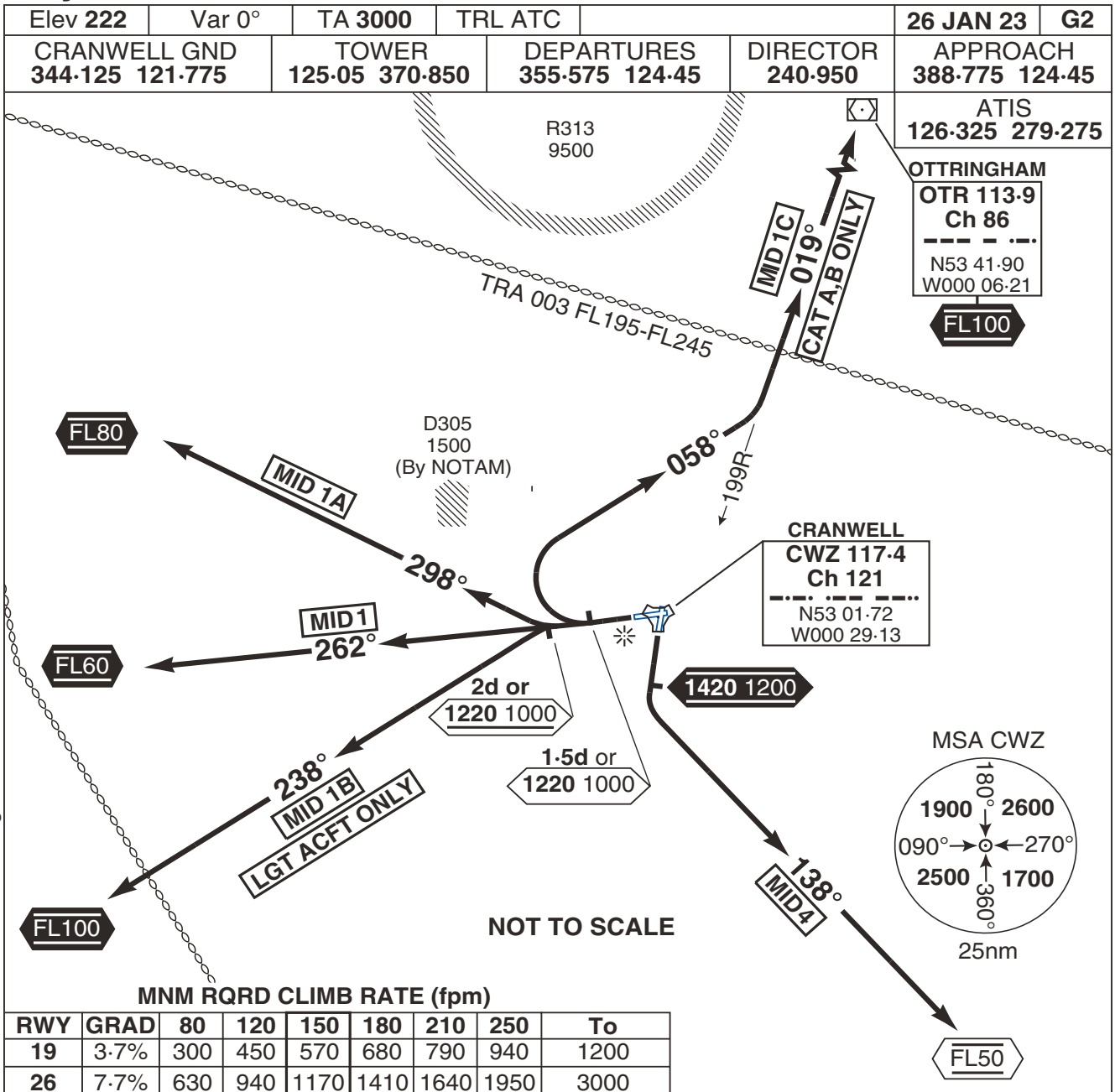
Rwy 19/26 MID

CRANWELL

EGYD/- ENGLAND

Changes: Annual Maintenance, GAM removed

No1 AIDU Last Amended 17 NOV 22



1. Close in obstacles exist.
2. Requirements for onward routings at the end of the MID are to be pre-notified to ATC before TKOF.
3. Mnm Climb Gradient required for MID 4 is 3.7% until reaching 1420 1200. Climb gradients required revert back to 3.3% after this point.
4. MID terminates at CWZ 25d.

MID	RWY	ROUTING (Including Mnm Noise Routes)
1	26 262°M	Ahead on Rwy Tr to FL60 ; further climb as cleared.
1A		Ahead on Rwy Tr to not below 1220 1000 or 2d, whichever is later, then right and climb on Tr 298°, climbing to FL80 .
1B LGT ACFT ONLY		Ahead on Rwy Tr to not below 1220 1000 or 2d, whichever is later, then left onto Tr 238° climbing to FL100 .
1C CAT A,B ONLY		Ahead on Rwy Tr to 1220 1000 or 1.5d, whichever later, then right onto Tr 058°. Intcp OTR 199R climbing to FL100 . Mnm climb grad 7.7% until 3230 3000 .
4	19 188°M	Ahead on Rwy Tr to 1420 1200 , level turn left onto Tr 138° and, when directed by ATC, climb to FL50.

CRANWELL
MIPS

Rwy 19/26 MID

© UK MOD Crown Copyright 2022. No1 AIDU is not responsible for, and claims no right to, the content or accuracy of 3rd party documents/information.

RADAR PROCEDURES

CRANWELL

EGYD/- ENGLAND

Changes: Annual Maintenance

No1 AIDU Last Amended 17 NOV 22

Elev 222		Var 0°		TA 3000		TRL ATC		26 JAN 23		K1		
CRANWELL APP 388-775 124-45			ZONE 355-575		DIRECTOR 240-950		TALKDOWN 255-675 125-05		TOWER 370-850		ATIS 126-325	
RWY	PROC	GP/TCH	RTR	MAPt	CAT	DA/ MDA	DH/ MDH	MNM	MET			
QFU								VIS				
08 082°	PAR	2.5°/23	-	-	A	470	250	800m	③			
					B	480	260	800m	③			
					C	490	270	900m	③			
					D	500	280	900m	③			
					E	520	300	900m	⑥			
	CIRCLING MINIMA (2.5° PAR)					A	680	470	1500m			
						B	730	520	1600m			
						C	970	760	2400m			
						D	970	760	3600m			
						E	1070	860	3600m			
08 082°	PAR	3°/32			A	450	230	800m	④			
					B	460	240	800m	④			
					C	470	250	800m	③			
					D	480	260	800m	③			
					E	500	280	900m	③			
	CIRCLING MINIMA (3.0° PAR)					A	680	470	1500m			
						B	730	520	1600m			
						C	970	760	2400m			
						D	970	760	3600m			
						E	1070	860	3600m			
08 082°	SRA	3°/27	-	1nm	AB	660	450	1500m	⑤			
					CDE	660	450	1700m	⑤			
	CIRCLING MINIMA					A	680	470	1900m			
						B	730	520	1900m			
						C	970	760	3600m			
						D	970	760	4000m			
						E	1070	860	4800m			

1. **CAUTION:** RDH. PAR 08 2.5°GS 23ft, 3°GS 32ft.

2. **CAUTION:** TCH. SRA 08 27ft.

Note: Notional 3° GS for SRA. Do not cross 4-6nm below 1720 1500. Advisory hgts at 0.5nm intervals.

③ When ALS inop increase vis to 1300m.

④ When ALS inop increase vis to 1200m.

⑤ When ALS inop increase vis Cat ABCDE to 2100m.

⑥ When ALS inop increase vis Cat E to 1400m.

MISSED APPROACH. Ahead on Rwy Tr to 1220 1000 or CWZ 2d, whichever later, then right onto Tr 139°; climbing to **2720 2500**; call APPROACH.

COMMS FAILURE

Fly mnm 2700 2500, try to regain contact on any CRANWELL frequency.

© UK MOD Crown Copyright 2022. No1 AIDU is not responsible for, and claims no right to, the content or accuracy of 3rd party documents/information.

RADAR PROCEDURES

CRANWELL

EGYD/- ENGLAND

Changes: Annual Maintenance

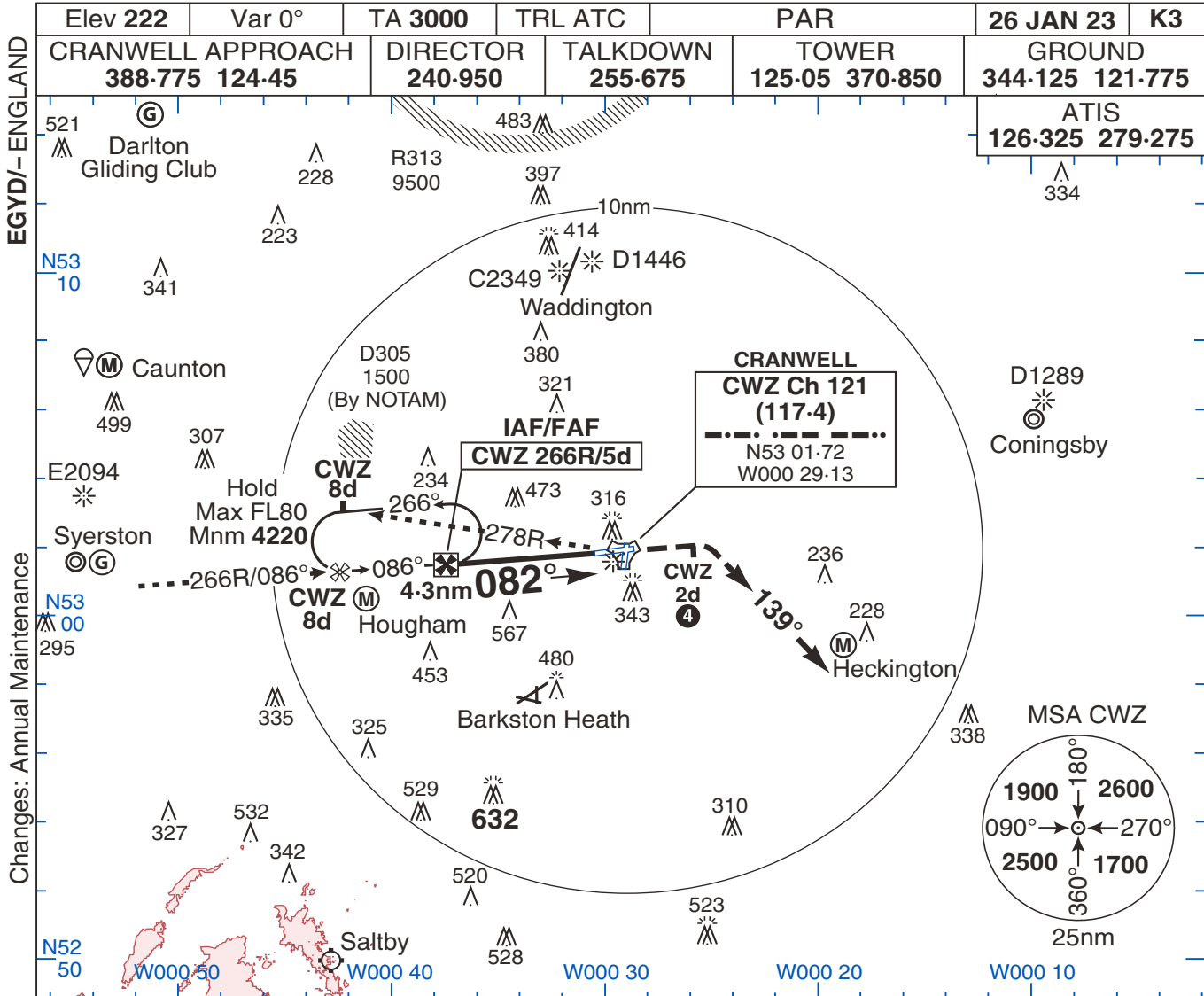
No1 AIDU Last Amended 17 NOV 22

Elev 222	Var 0°	TA 3000	TRL ATC			26 JAN 23	K2		
CRANWELL APP 388-775 124-45		ZONE 355-575	DIRECTOR 240-950	TALKDOWN 255-675 125-05		TOWER 370-850	ATIS 126-325		
RWY QFU	PROC	GP/TCH	RTR	MAPt	CAT	DA/ MDA	DH/ MDH	MNM MET VIS	
26 262°	PAR	2-5°/28	-	-	A	410	230	800m ③	
					B	420	240	800m ③	
					C	430	250	800m ④	
					D	440	260	800m ④	
					E	450	270	800m ④	
	CIRCLING MINIMA (2-5° PAR)					A	680	470	1500m
						B	730	520	1600m
						C	970	760	2400m
						D	970	760	3600m
						E	1070	860	3600m
26 262°	PAR	3°/32			A	410	230	800m ③	
					B	420	240	800m ③	
					C	430	250	800m ④	
					D	440	260	800m ④	
					E	450	270	800m ④	
	CIRCLING MINIMA (3-0° PAR)					A	680	470	1500m
						B	730	520	1600m
						C	970	760	2400m
						D	970	760	3600m
						E	1070	860	3600m
26 262°	SRA	3°/32	-	1nm	ABCDE	610	430	1300m ⑤	
								CIRCLING MINIMA	A
						B	730	520	2000m
						C	970	760	2400m
						D	970	760	3600m
						E	1070	860	3600m
	<p>1. CAUTION: RDH. PAR 26 2-5°GS 28ft, 3°GS 32ft.</p> <p>2. CAUTION: TCH. SRA 26 32ft.</p> <p>Notional 3° GS for SRA. Do not cross 5-5nm below 1980 1800. Advisory hghts at 0-5nm intervals.</p> <p>③ When ALS inop increase vis to 1200m.</p> <p>④ When ALS inop increase vis to 1300m.</p> <p>⑤ When ALS inop increase vis Cat ABCDE to 2000m.</p> <p>MISSED APPROACH. Ahead on Rwy Tr to 2680 2500; call APPROACH.</p> <p>COMMS FAILURE Fly mnm 2700 2500, try to regain contact on any CRANWELL frequency.</p>								

© UK MOD Crown Copyright 2022. No1 AIDU is not responsible for, and claims no right to, the content or accuracy of 3rd party documents/information.

TAC to PAR Rwy 08 - 2.5° (Cat A,B)

CRANWELL

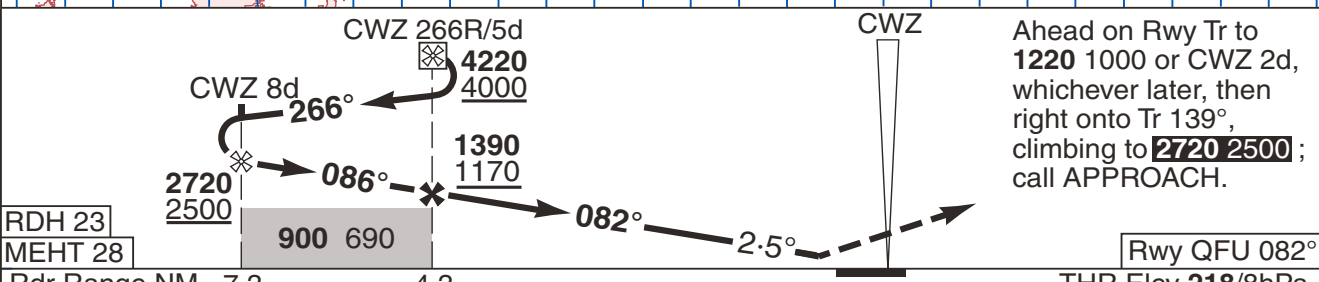


EGYD/- ENGLAND

Changes: Annual Maintenance

No1 AIDU Last Amended 17 NOV 22

© UK MOD Crown Copyright 2022. No1 AIDU is not responsible for, and claims no right to, the content or accuracy of 3rd party documents/information.



Ahead on Rwy Tr to **1220 1000** or CWZ 2d, whichever later, then right onto Tr 139°, climbing to **2720 2500**; call APPROACH.

Rdr Range NM 7.3 4.3 THR Elev **218/8hPa**

CAT	PAR ②		CIRC				
	A	470	250	N/A			
B	480	260	N/A				
GS (kt)		80	120	150	180	210	
FAF-THR 4.3nm		3:15	2:09	1:43	1:26	1:14	
ROD (fpm) 2.5°		350	530	660	800	930	

1. Hold entry **restricted** to along 266R inbd to CWZ and along 278R to the end of the oubd leg 8d limit.
2. When ALS inop increase vis to 1300m.
3. Missed approach assessed out to CWZ 25d.
4. Or **1220 1000**, whichever is later.

CRANWELL

TAC to PAR Rwy 08 - 2.5° (Cat A,B)

MIPS

TAC to PAR Rwy 08 - 2.5° (Cat C,D,E)

CRANWELL

	Elev 222	Var 0°	TA 3000	TRL ATC	PAR	26 JAN 23	K4
EGYD/- ENGLAND	CRANWELL APPROACH 388-775 124-45		DIRECTOR 240-950	TALKDOWN 255-675	TOWER 125-05 370-850	GROUND 344-125 121-775	
						ATIS 126-325 279-275	

Changes: Annual Maintenance

MSA CWZ
 1900 180° 2600
 090° 270°
 2500 360° 1700
 25nm

	RDH 23	MEHT 28					

	Rdr Range NM	9.3	4.3	THR Elev 218/8hPa

	CAT	PAR	CIRC	
MIPS	C	490 270 900m	970 760 2400m	1. Hold entry restricted to along 266R inbd to CWZ and along 297R to the end of the oubd leg 12d limit. 2. When ALS inop increase vis Cat CD to 1300m and Cat E to 1400m. 3. Missed approach assessed out to CWZ 25d. 4. Or 1220 1000, whichever is later.
	D	500 280 900m	970 760 3600m	
	E	520 300 900m	1070 860 3600m	

	GS (kt)	80	120	150	180	210
	FAF-THR 4.3nm	3:15	2:09	1:43	1:26	1:14
	ROD (fpm) 2.5°	350	530	660	800	930

© UK MOD Crown Copyright 2022. No1 AIDU is not responsible for, and claims no right to, the content or accuracy of 3rd party documents/information.

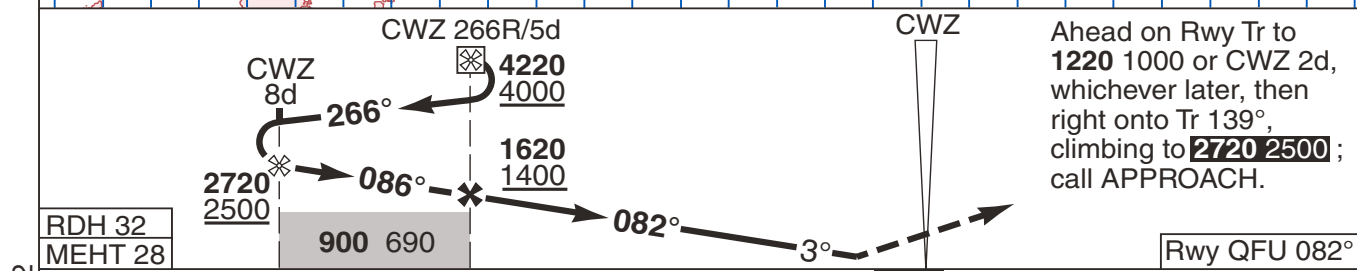
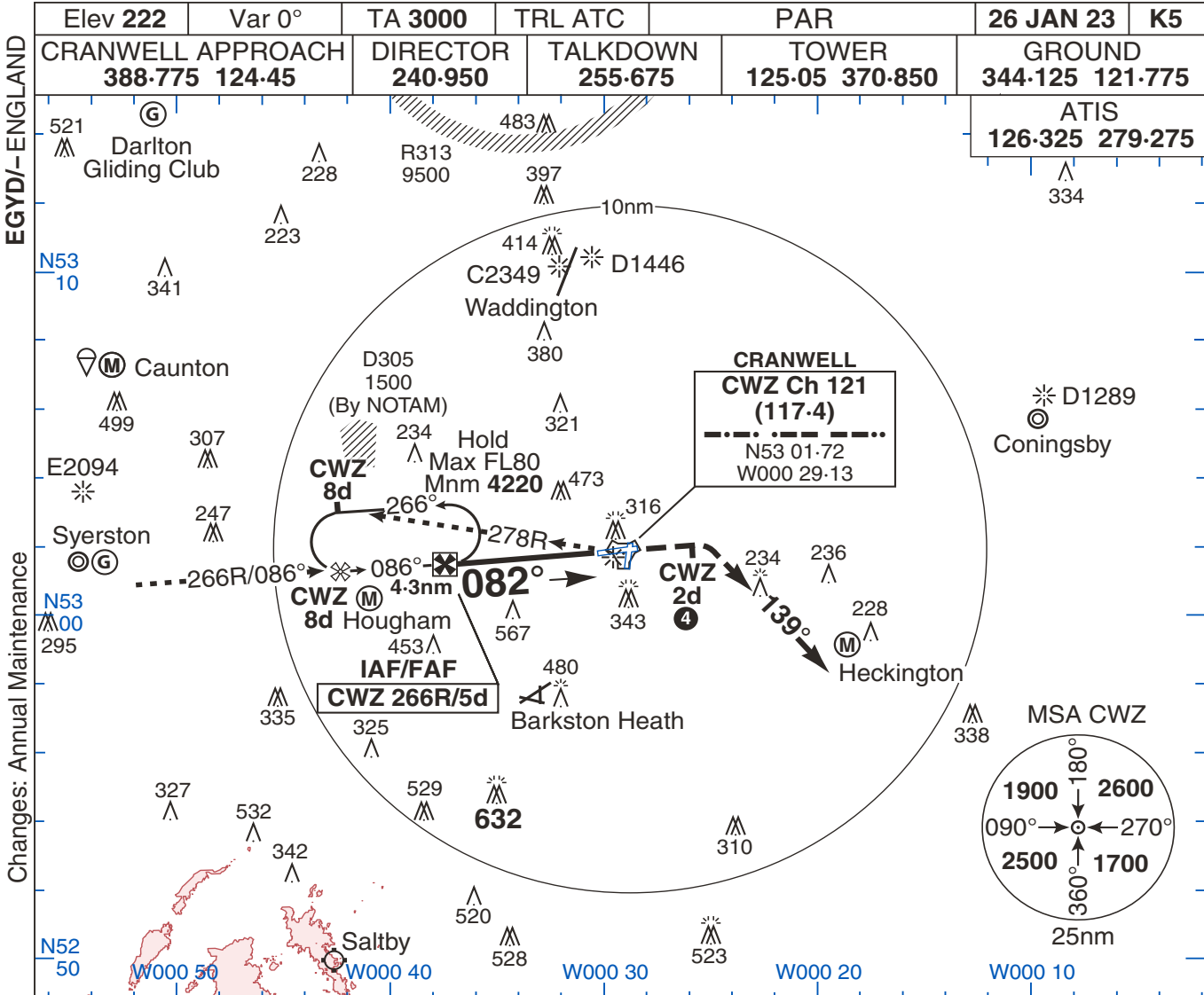
No1 AIDU Last Amended 17 NOV 22

CRANWELL MIPS

TAC to PAR Rwy 08 - 2.5° (Cat C,D,E)

TAC to PAR Rwy 08 - 3° (Cat A,B)

CRANWELL



RDH 32	MEHT 28	Rdr Range NM	7.3	4.3	THR Elev 218/8hPa
MIPS	CAT A	PAR ②	N/A		CIRC
	CAT B	PAR ②	N/A		CIRC
GS (kt)	80	120	150	180	210
FAF-THR	4.3nm	3:15	2:09	1:43	1:26
ROD (fpm)	3°	420	640	800	960

1. Hold entry **restricted** to along 266R inbd to CWZ and along 278R to the end of the oubd leg 8d limit.
2. When ALS inop increase vis to 1200m.
3. Missed approach assessed out to CWZ 25d.
4. Or 1220 1000, whichever is later.

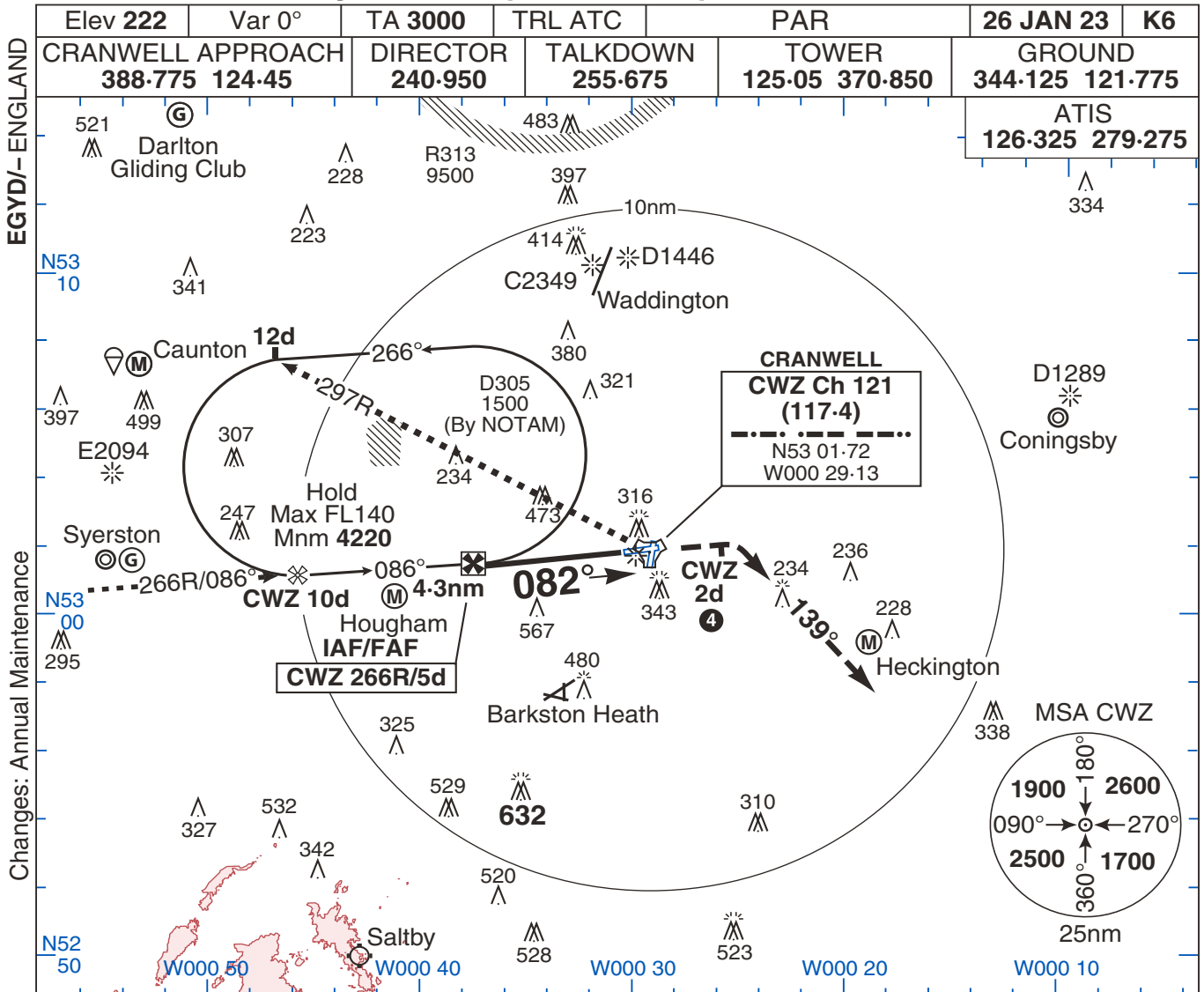
CRANWELL MIPS

TAC to PAR Rwy 08 - 3° (Cat A,B)

© UK MOD Crown Copyright 2022. No1 AIDU is not responsible for, and claims no right to, the content or accuracy of 3rd party documents/information.

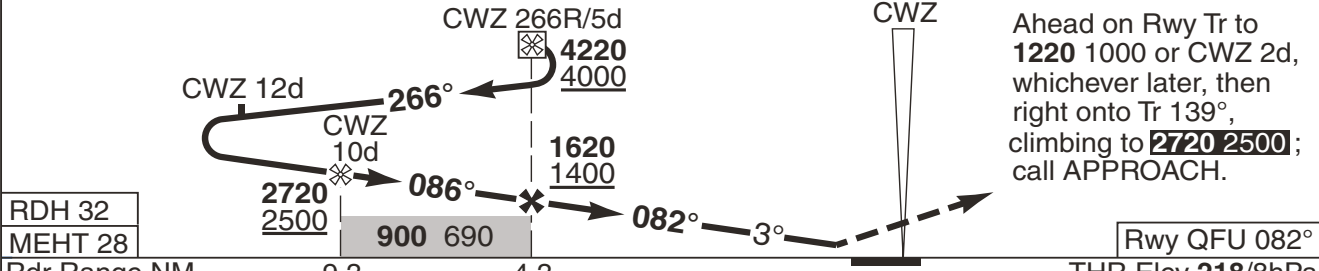
TAC to PAR Rwy 08 - 3° (Cat C,D,E)

CRANWELL



Changes: Annual Maintenance

No1 AIDU Last Amended 17 NOV 22



Ahead on Rwy Tr to 1220 1000 or CWZ 2d, whichever later, then right onto Tr 139°, climbing to **2720 2500**; call APPROACH.

RDH 32					
MEHT 28					
Rdr Range NM		9.3	4.3		
CAT	PAR ②		CIRC		
C	470 250 800m		970 760 2400m		
D	480 260 800m	N/A	970 760 3600m		
E	500 280 900m		1070 860 3600m		
GS (kt)		80	120	150	180
FAF-THR 4.3nm		3:15	2:09	1:43	1:26
ROD (fpm)	3°	420	640	800	960
					1110

1. Hold entry **restricted** to along 266R inbd to CWZ and along 297R to the end of the oubd leg 12d limit.
- ② When ALS inop increase vis to 1300m.
3. Missed approach assessed out to CWZ 25d.
- ④ Or 1220 1000, whichever is later.

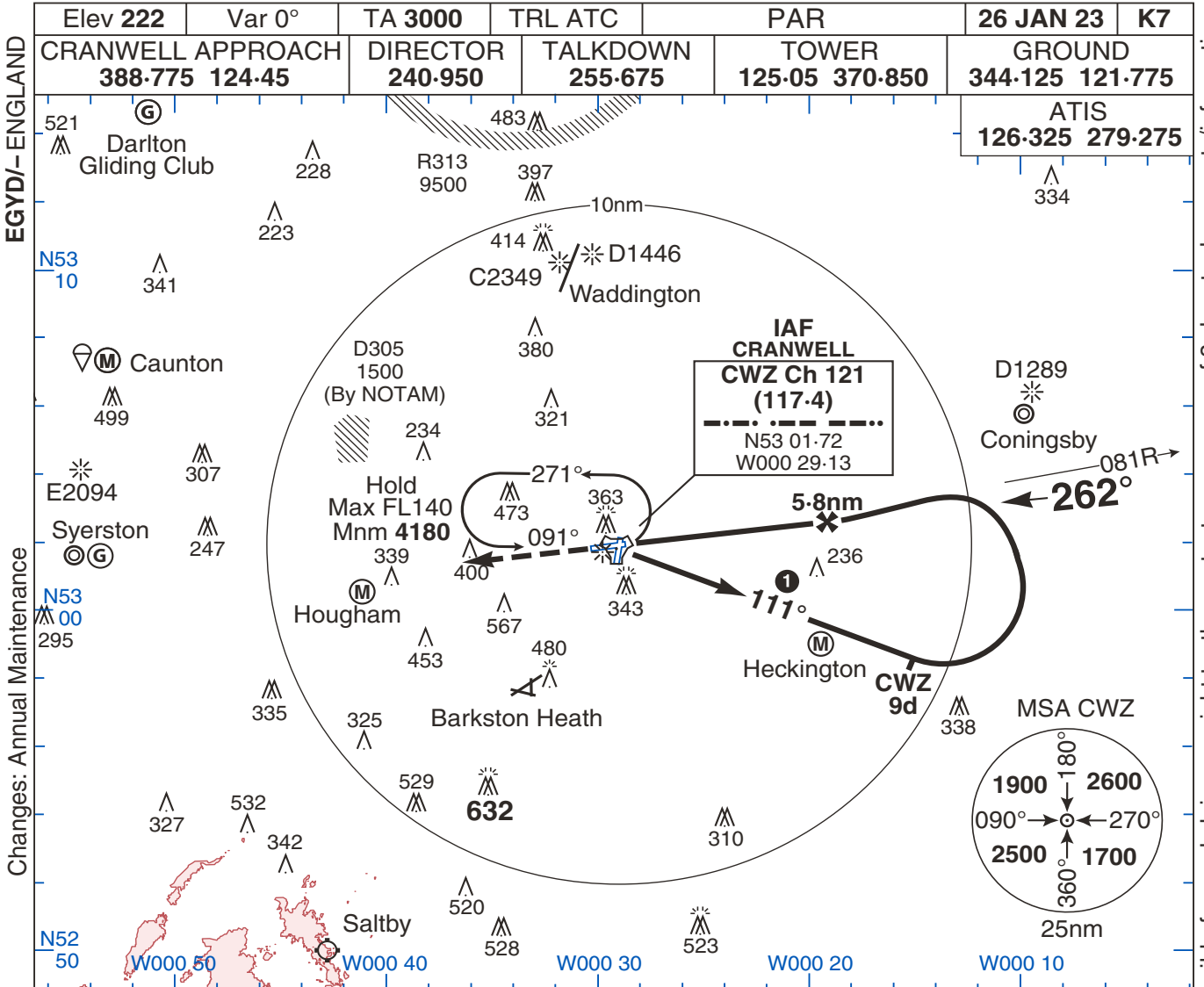
CRANWELL TAC to PAR Rwy 08 - 3° (Cat C,D,E)

MIPS

© UK MOD Crown Copyright 2022. No1 AIDU is not responsible for, and claims no right to, the content or accuracy of 3rd party documents/information.

TAC to PAR Rwy 26 - 2.5°

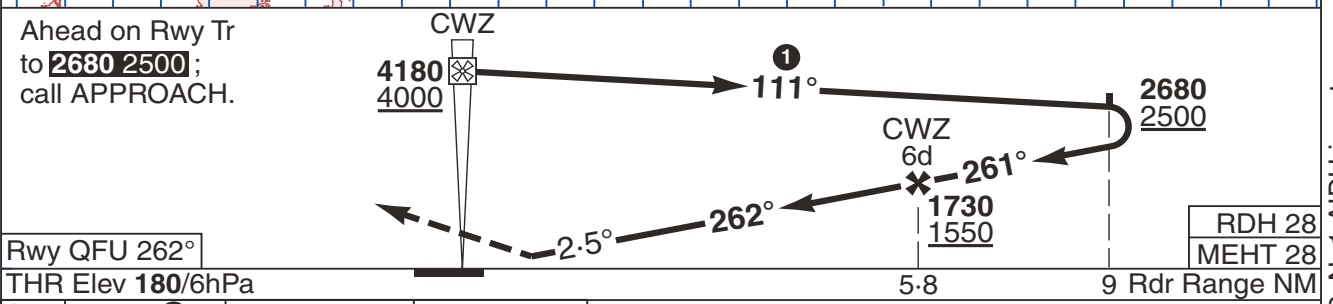
CRANWELL



EGYD/- ENGLAND

Changes: Annual Maintenance

© UK MOD Crown Copyright 2022. No1 AIDU is not responsible for, and claims no right to, the content or accuracy of 3rd party documents/information.



Ahead on Rwy Tr to 2680 2500 ; call APPROACH.		CWZ		4180 4000		111°		2680 2500		RDH 28 MEHT 28		
Rwy QFU 262°		THR Elev 180/6hPa		5-8		9 Rdr Range NM						
CAT	PAR②	CIRC				① Cat AB oubd on Tr 091° to 9d. ② When ALS inop increase vis Cat AB to 1200m and Cat CDE to 1300m. 3. Missed approach assessed out to CWZ 25d.						
MIPS	A	410 230	680 470 1500m									
	B	420 240	730 520 1600m									
	C	430 250	970 760 2400m									
	D	440 260	970 760 3600m									
	E	450 270	1070 860 3600m									
GS (kt)		80	120	150	180	210						
FAF-THR		5.8nm	4:21	2:54	2:19	1:56	1:39					
ROD (fpm)		2.5°	350	530	660	800	930					

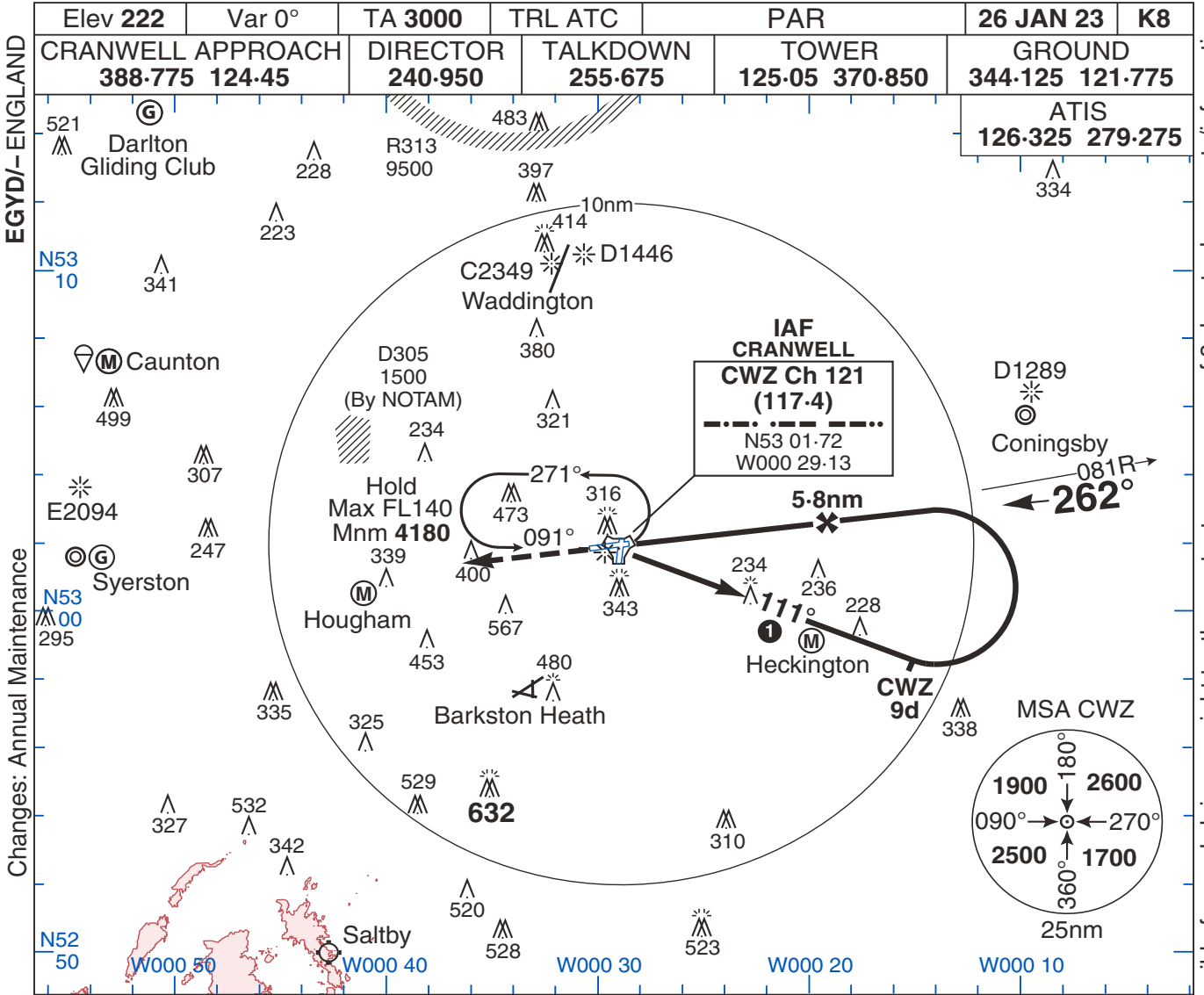
No1 AIDU Last Amended 17 NOV 22

CRANWELL MIPS

TAC to PAR Rwy 26 - 2.5°

TAC to PAR Rwy 26 - 3°

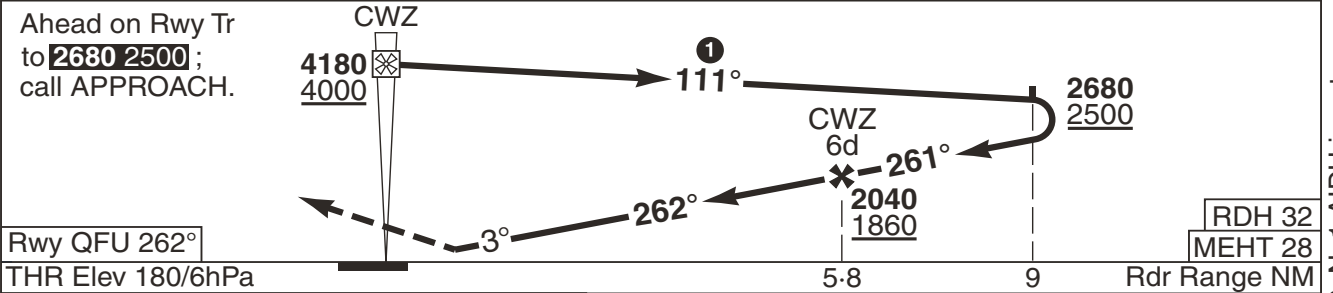
CRANWELL



EGYD/- ENGLAND

Changes: Annual Maintenance

© UK MOD Crown Copyright 2022. No 1 AIDU is not responsible for, and claims no right to, the content or accuracy of 3rd party documents/information.



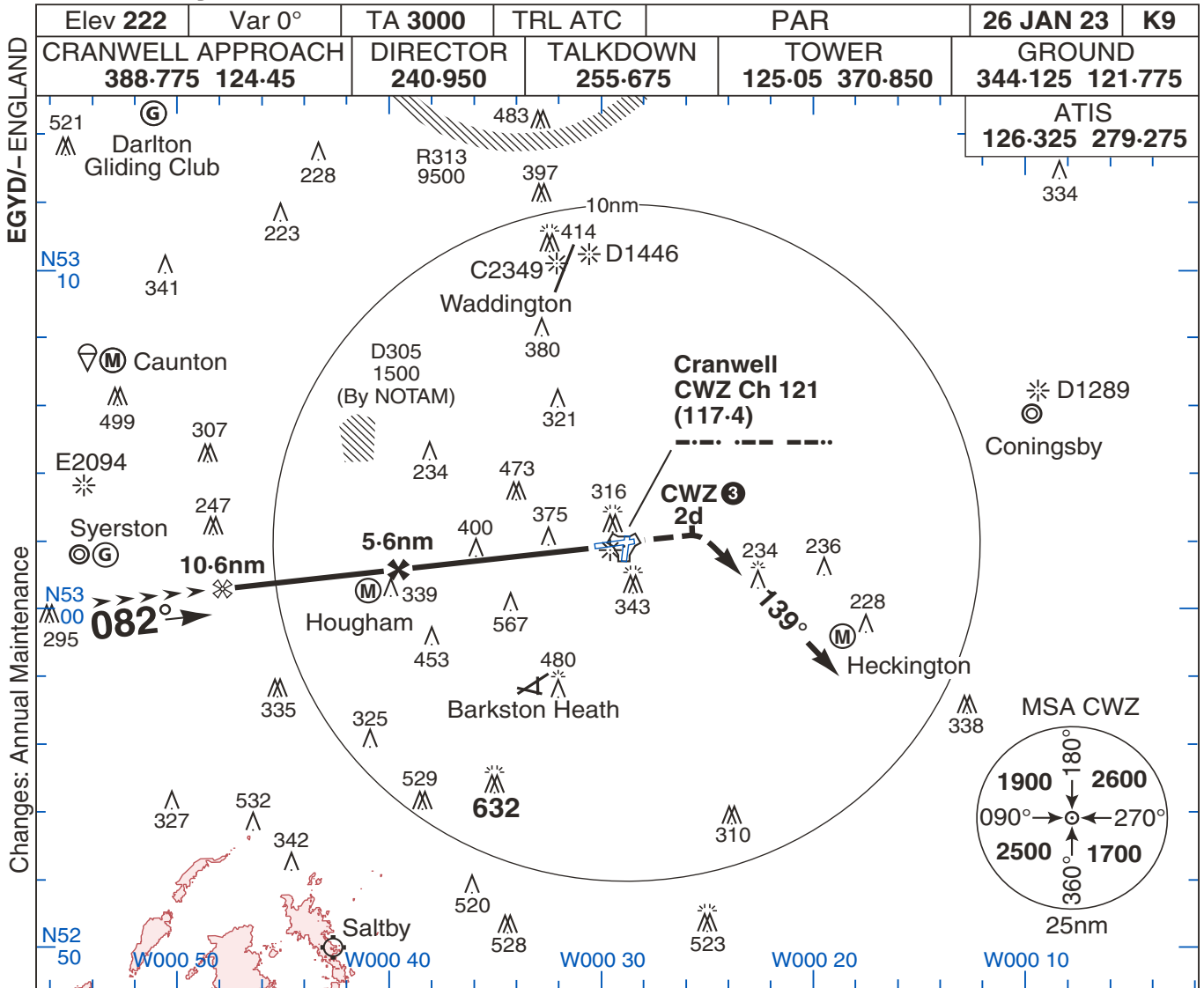
CAT	PAR ²		CIRC					
	MSL	AGL	80	120	150	180	210	
A	410	230	N/A	680	470	① Cat AB oudbd on Tr 091° to 9d. ② When ALS inop increase vis Cat AB to 1200m and Cat CDE to 1300m. 3. Missed approach assessed out to CWZ 25d.		
B	420	240		730	520			
C	430	250		970	760			
D	440	260		970	760			
E	450	270		1070	860			
GS (kt)		80	120	150	180	210		
FAF-THR		5.8nm	4:21	2:54	2:19	1:56	1:39	
ROD (fpm)		3°	420	640	800	960	1110	

CRANWELL
MIPS

TAC to PAR Rwy 26 - 3°

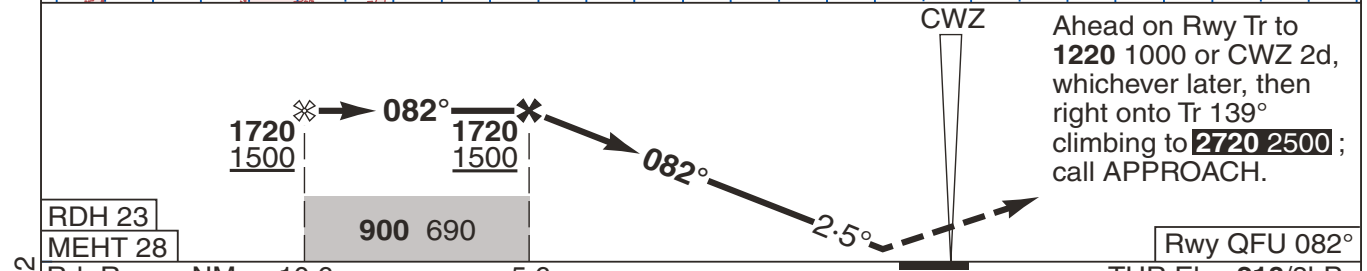
PAR Rwy 08 - 2.5°

CRANWELL



Changes: Annual Maintenance

© UK MOD Crown Copyright 2022. No1 AIDU is not responsible for, and claims no right to, the content or accuracy of 3rd party documents/information.



Ahead on Rwy Tr to **1220 1000** or CWZ 2d, whichever later, then right onto Tr 139° climbing to **2720 2500**; call APPROACH.

Rdr Range NM 10.6 5.6 THR Elev **218/8hPa**

CAT	PAR①	CIRC				
		80	120	150	180	210
A	470 250 800m	N/A				
B	480 260 800m	N/A				
C	490 270 900m	N/A				
D	500 280 900m	N/A				
E	520 300 900m	N/A				
GS (kt)		80	120	150	180	210
FAF-THR	5.6nm	4:12	2:48	2:14	1:52	1:36
ROD (fpm)	2.5°	350	530	660	790	920

- ① When ALS inop increase vis Cat ABCD to 1300m and Cat E to 1400m.
- ② Missed approach assessed out to CWZ 25d.
- ③ Or 1220 1000, whichever is later.

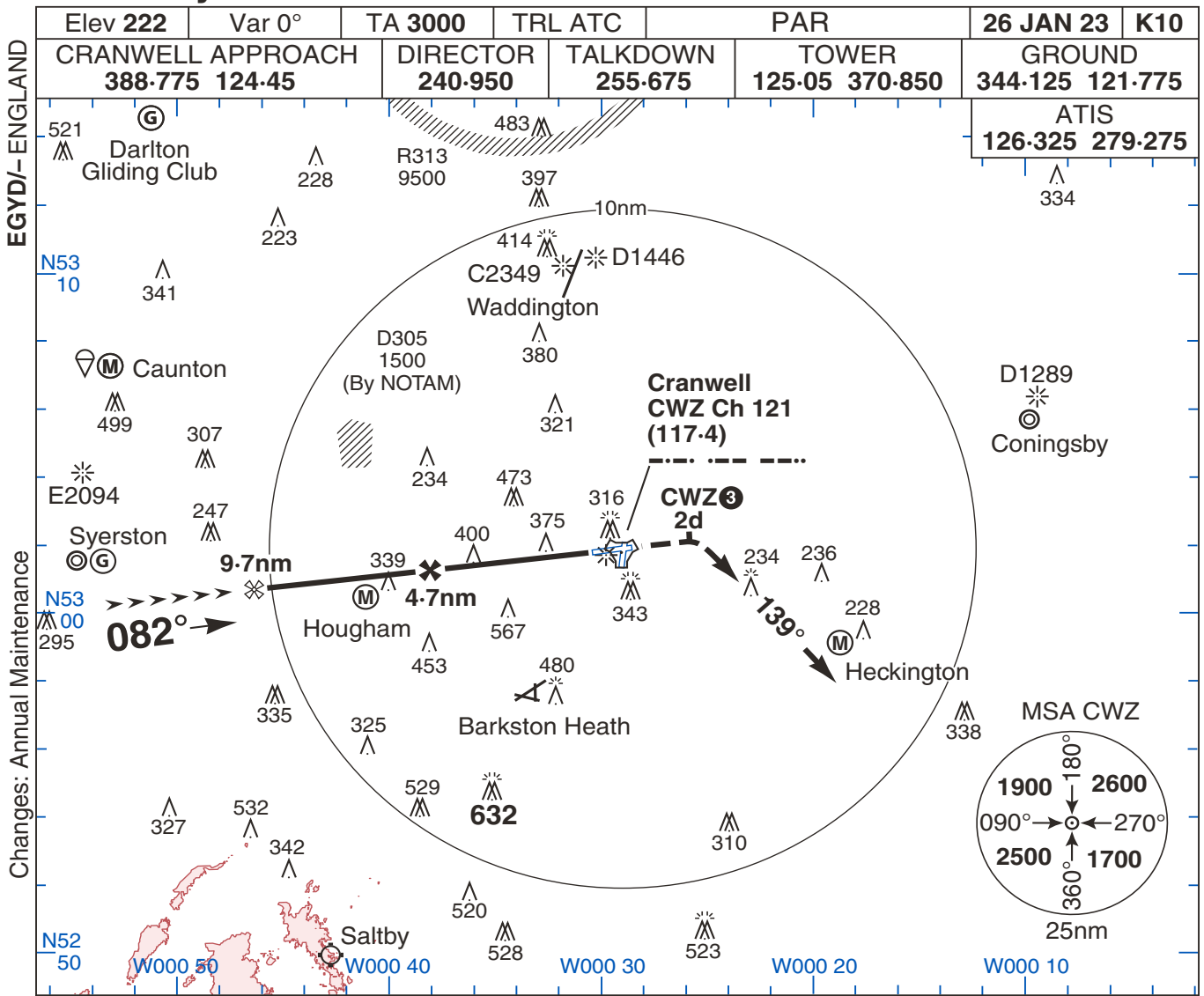
No1 AIDU Last Amended 17 NOV 22

CRANWELL
MIPS

PAR Rwy 08 - 2.5°

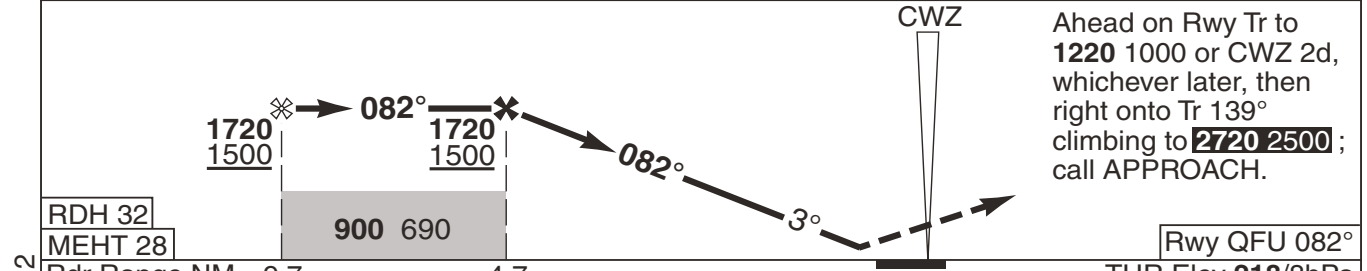
PAR Rwy 08 - 3°

CRANWELL



EGYD/-ENGLAND
Changes: Annual Maintenance

© UK MOD Crown Copyright 2022. No1 AIDU is not responsible for, and claims no right to, the content or accuracy of 3rd party documents/information.



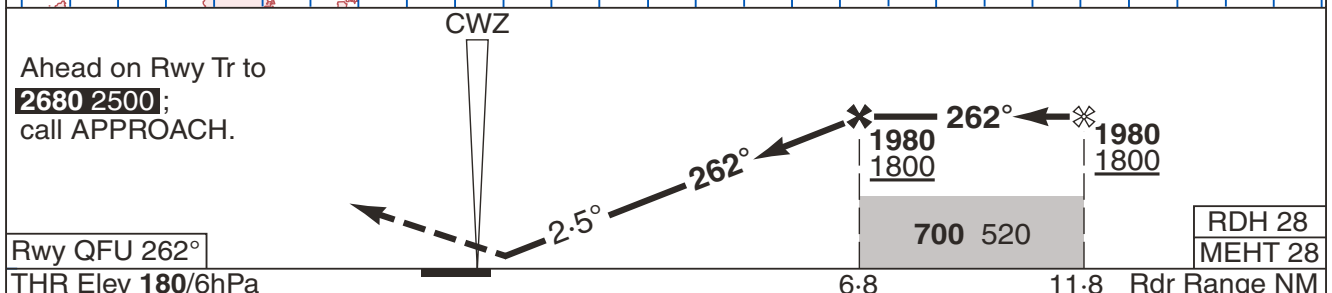
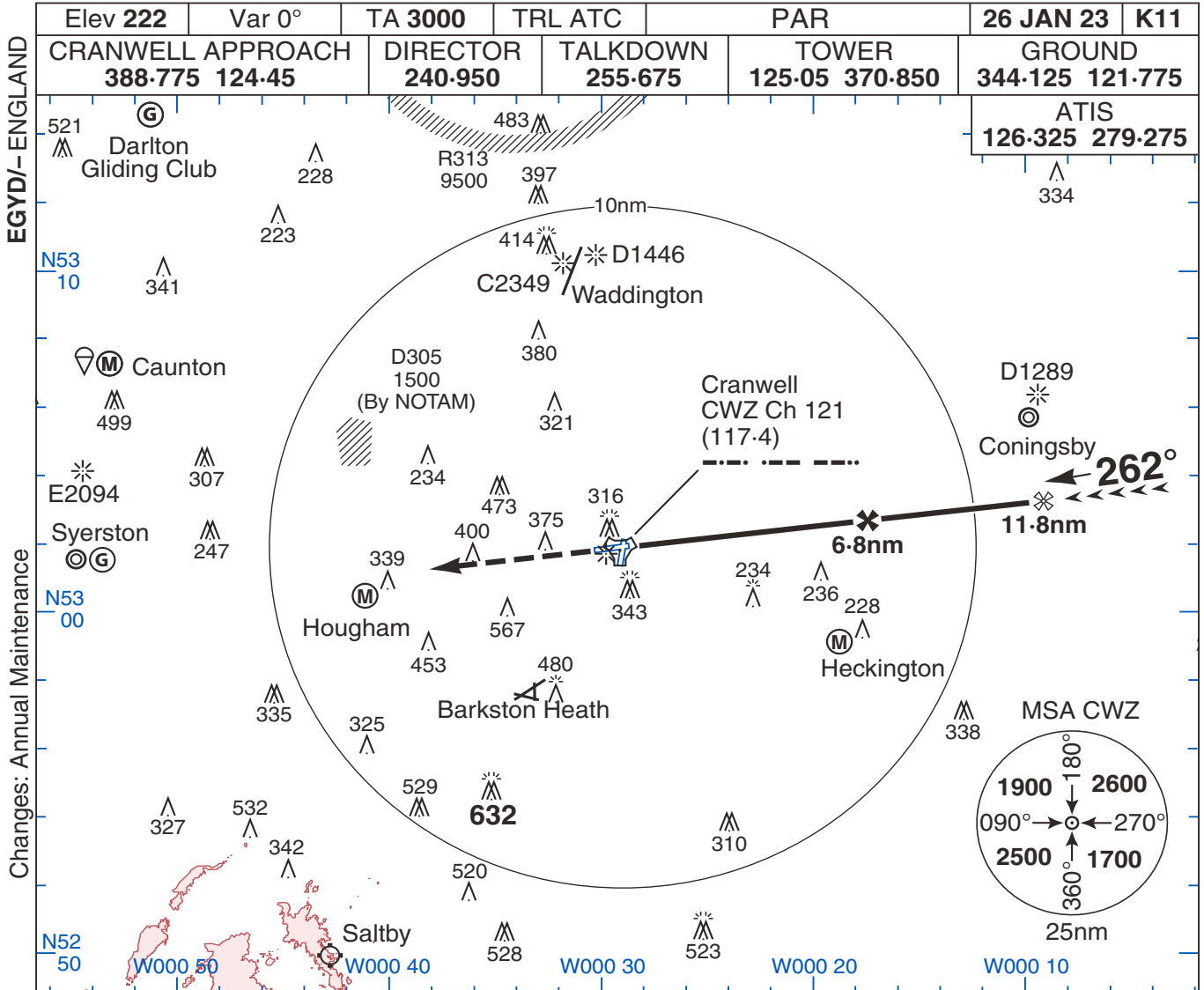
RDH 32	MEHT 28	Rdr Range NM	9.7	4.7	THR Elev 218/8hPa		
MIPS No1 AIDU Last Amended 18 NOV 22	CAT	PAR ①	CIRC		① When ALS inop increase vis Cat AB to 1200m and Cat CDE to 1300m. 2. Missed approach assessed out to CWZ 25d. ③ Or 1220 1000, whichever is later.		
	A	450 230 800m	680 470 1500m				
	B	460 240 800m	730 520 1600m				
	C	470 250 800m	970 760 2400m				
	D	480 260 800m	970 760 3600m				
E	500 280 900m	1070 860 3600m					
GS (kt)		80	120	150	180	210	
FAF-THR		4.7nm	3:33	2:21	1:53	1:34	1:21
ROD (fpm)		3°	420	630	780	940	1090

CRANWELL
MIPS

PAR Rwy 08 - 3°

PAR Rwy 26 - 2.5°

CRANWELL



No1 AIDU Last Amended 18 NOV 22

CAT	PAR ①	CIRC
A	410 230 800m	680 470 1500m
B	420 240 800m	730 520 1600m
C	430 250 800m	970 760 2400m
D	440 260 800m	970 760 3600m
E	450 270 800m	1070 860 3600m

N/A

GS (kt)	80	120	150	180	210	
FAF-THR	6-8nm	5:06	3:24	2:43	2:16	1:57
ROD (fpm)	2.5°	350	520	650	780	910

- ① When ALS inop increase vis Cat AB to 1200m and Cat CDE to 1300m.
- 2. Missed approach assessed out to CWZ 25d.

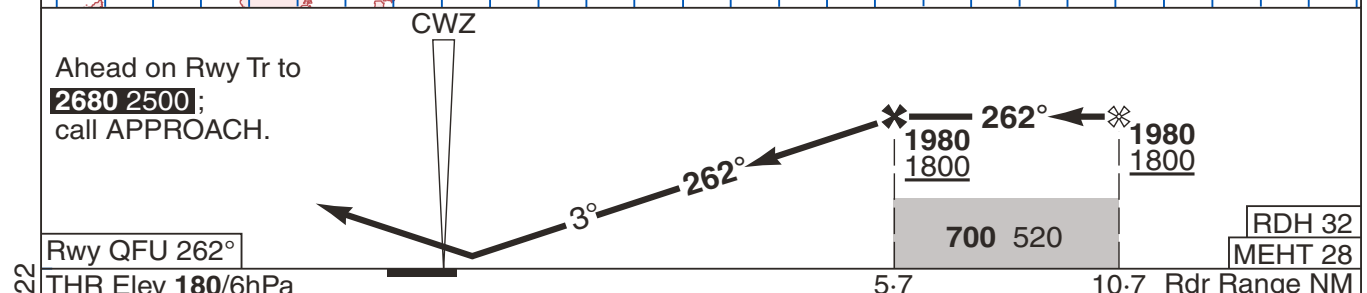
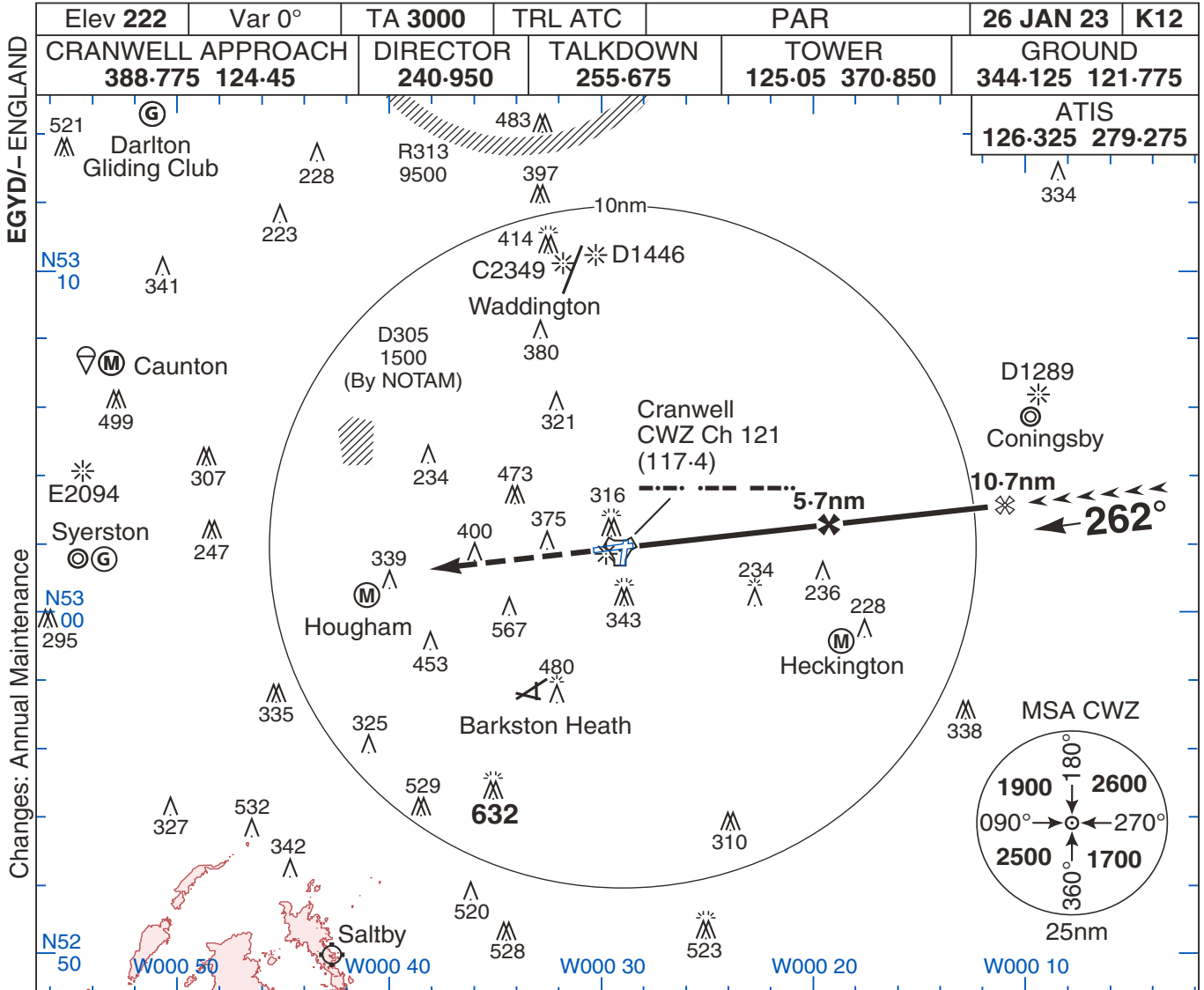
CRANWELL
MIPS

PAR Rwy 26 - 2.5°

© UK MOD Crown Copyright 2022. No1 AIDU is not responsible for, and claims no right to, the content or accuracy of 3rd party documents/information.

PAR Rwy 26 - 3°

CRANWELL



CAT	PAR ①		CIRC				
	A	410	230	680	470	1500m	
B	420	240	730	520	1600m		
C	430	250	970	760	2400m		
D	440	260	970	760	3600m		
E	450	270	1070	860	3600m		
MIPS		N/A					
GS (kt)	80	120	150	180	210		
FAF-THR	5-7nm	4:18	2:51	2:17	1:54	1:38	
ROD (fpm)	3°	410	620	780	930	1090	

① When ALS inop increase vis Cat AB to 1200m and Cat CDE to 1300m.
2. Missed approach assessed out to CWZ 25d.

CRANWELL
MIPS

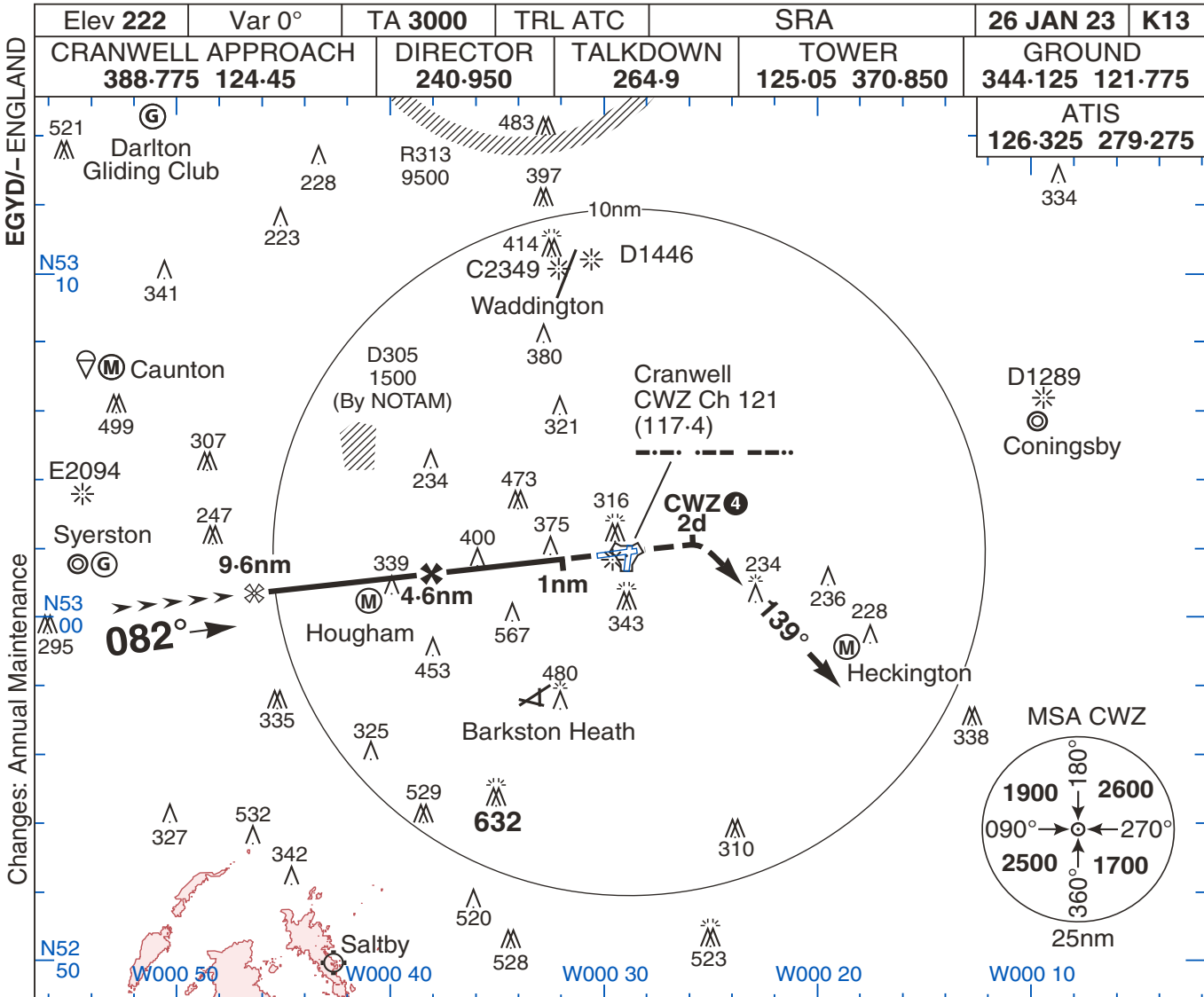
PAR Rwy 26 - 3°

© UK MOD Crown Copyright 2022. No1 AIDU is not responsible for, and claims no right to, the content or accuracy of 3rd party documents/information.

No1 AIDU Last Amended 18 NOV 22

SRA Rwy 08

CRANWELL



EGYD/- ENGLAND

Changes: Annual Maintenance

No1 AIDU Last Amended 18 NOV 22

© UK MOD Crown Copyright 2022. No1 AIDU is not responsible for, and claims no right to, the content or accuracy of 3rd party documents/information.

TCH 27	1720	1500	082°	1720	1500	082°	082°	3°	CWZ	Ahead on Rwy Tr to 1220 1000 or CWZ 2d, whichever later, then right onto Tr 139°, climbing to 2720 2500; call APPROACH. MAPt at 1nm.
MEHT 28	850 640								Rwy QFU 082°	
Rdr Range NM	9.6	4.6	1						THR Elev 218/8hPa	

CAT	SRA ①	CIRC
A	660 450 1500m	680 470 2100m
B		730 520 2100m
C		970 760 2400m
D	660 450 1700m	970 760 3600m
E		1070 860 3600m

GS (kt)	80	120	150	180	210
FAF-MAPt 3-6nm	2:42	1:48	1:26	1:12	1:02
ROD (fpm)	3°	420	640	800	960 1110

- ① When ALS inop increase vis Cat ABCDE to 2100m.
- ② Notional 3° GS for SRA. Do not cross 5nm below 1720 1500. Advisory hghts at 0.5nm intervals.
- ③ Missed approach assessed out to CWZ 25d.
- ④ Or 1220 1000, whichever is later.

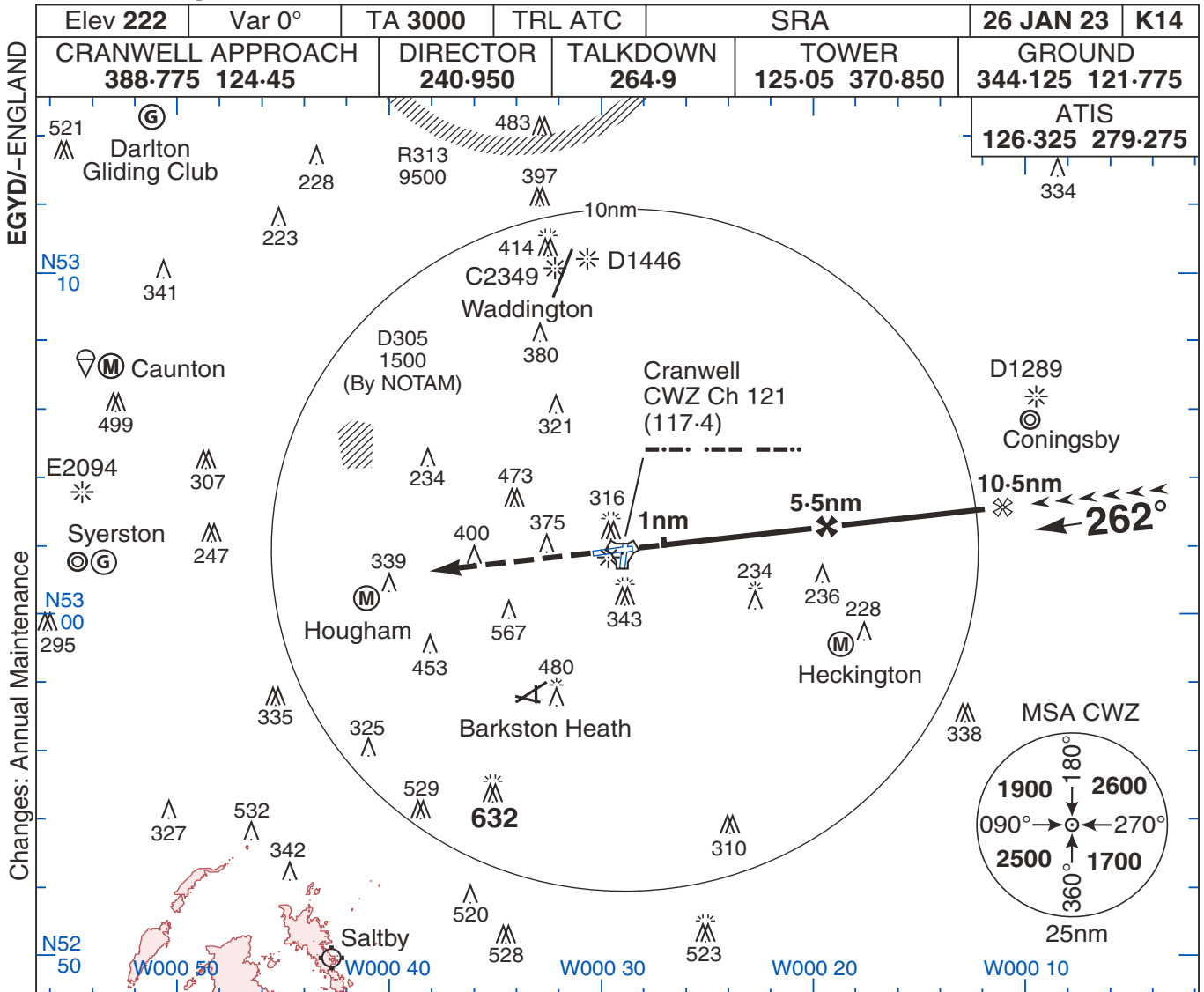
CRANWELL

SRA Rwy 08

MIPS

SRA Rwy 26

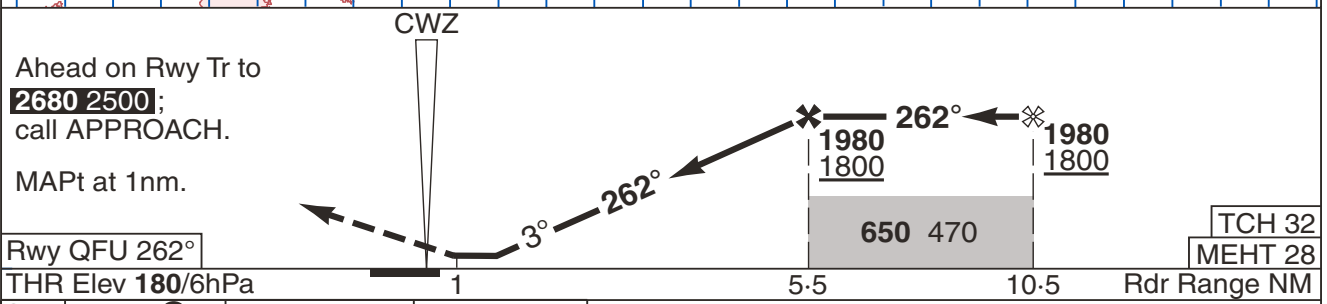
CRANWELL



EGYD/-ENGLAND

Changes: Annual Maintenance

© UK MOD Crown Copyright 2022. No1 AIDU is not responsible for, and claims no right to, the content or accuracy of 3rd party documents/information.



Ahead on Rwy Tr to 2680 2500 ; call APPROACH.		MAPt at 1nm.		Rwy QFU 262°		THR Elev 180/6hPa		TCH 32		
Rdr Range NM		1		5.5		10.5		MEHT 28		
CAT	SRA ②	CIRC								
A	610 430 1300m	N/A	680 470		1. CAUTION. Procedure hghts are ref to THR Elev.			② When ALS inop increase vis Cat ABCDE to 2000m.		
B			730 520		3. Notional 3° GS for SRA. Do not cross 6nm below 1980 1800. Advisory hghts at 0.5nm intervals.			4. Missed approach assessed out to CWZ 25d.		
C			970 760							
D			970 760							
E			1070 860							
GS (kt)		80	120	150	180	210				
FAF-MAPt 4.5nm		3:24	2:15	1:48	1:30	1:17				
ROD (fpm)		3°	420	640	800	960	1110			

CRANWELL

SRA Rwy 26

MIPS

ATC SURVEILLANCE MNM ALTITUDE

CRANWELL

EGYD/- ENGLAND

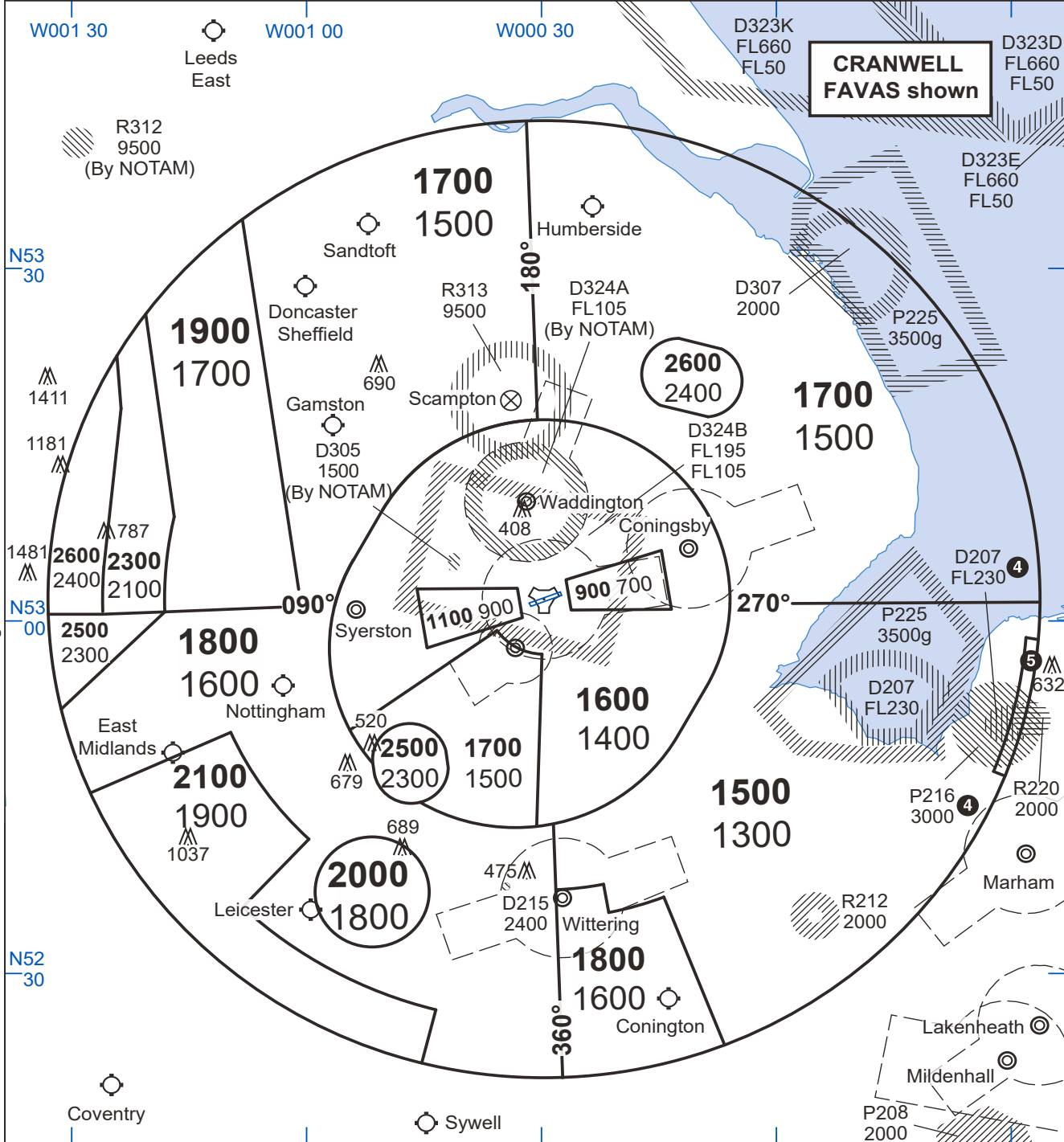
Changes: SUAS, Editorial

No 1 AIDU Last Amended 13 FEB 24

© UK MOD Crown Copyright 2024. No 1 AIDU is not responsible for, and claims no right to, the content or accuracy of 3rd party documents/information.

Elev 222	Var 0°	TA 3000	TRL ATC	ARP N53 01.78 W000 29.57 (WGS 84)	21 MAR 24	K15
-----------------	---------------	----------------	---------	-----------------------------------	------------------	------------

CRANWELL APP 388-775	DIRECTOR 240-950	TALKDOWN 255-675	TOWER 125-05 370-850	ATIS 126-325 279-275
--------------------------------	----------------------------	----------------------------	--------------------------------	--------------------------------



- CAUTION.** Chart should only be used for cross check of alts whilst in receipt of an ATC surveillance service.
- Comms Failure.** In the event of complete radio comms failure in an aircraft, the pilot is to adopt the appropriate procedures described in RADAR PROCEDURES K1.
- QFE Datum 177ft.
- Effective times 01 Dec - 01 Mar.
- 1700 1500**

CRANWELL PANS-OPS (ICAO)

ATC SURVEILLANCE MNM ALTITUDE

ATC SURVEILLANCE MNM ALTITUDE

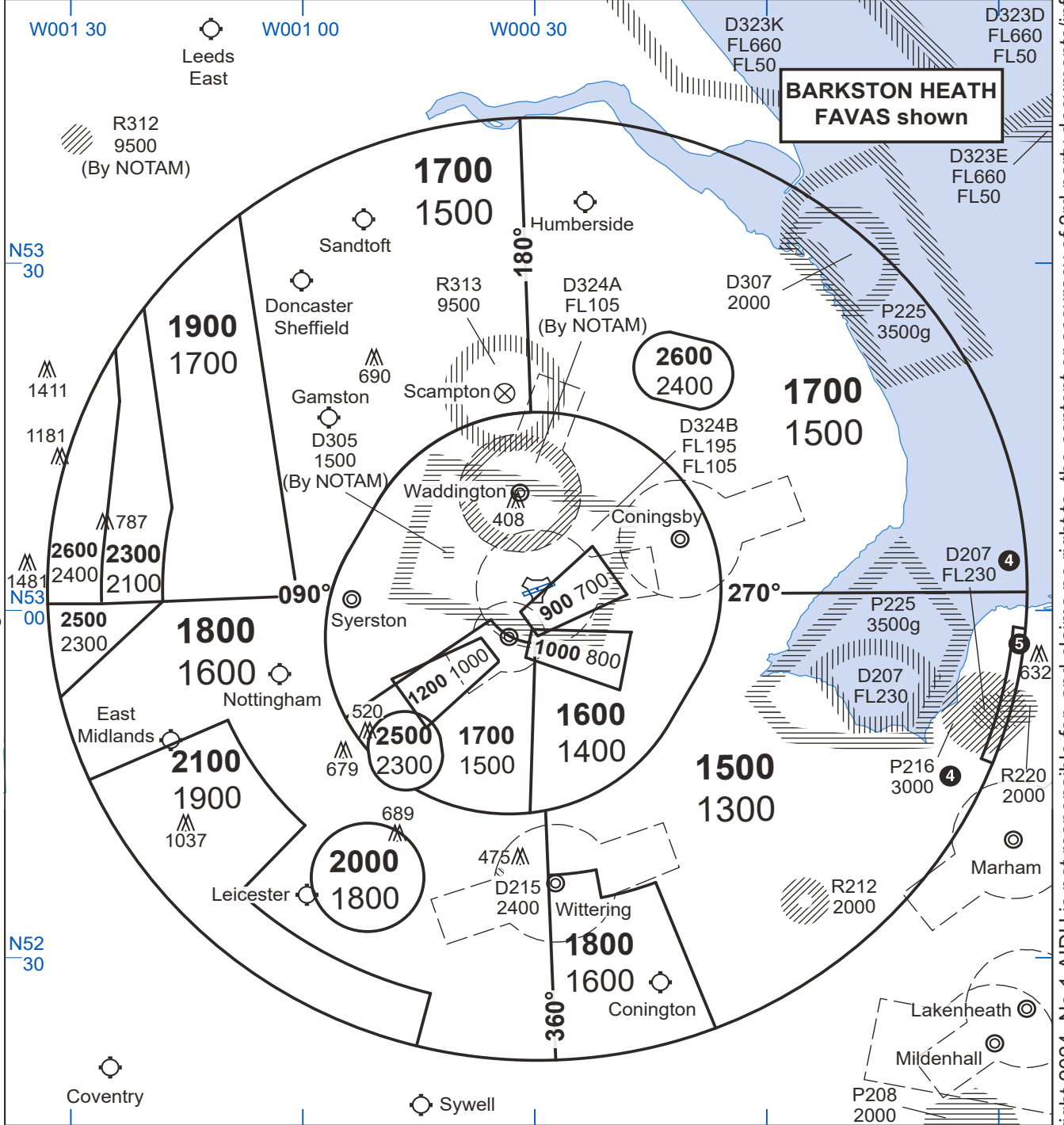
CRANWELL

Elev 222	Var 0°	TA 3000	TRL ATC	ARP N53 01.78 W000 29.57 (WGS 84)	21 MAR 24	K16
CRANWELL APP 388.775	DIRECTOR 240.950	TALKDOWN 255.675	TOWER 125.05 370.850	ATIS 126.325 279.275		

EGYD/- ENGLAND

Changes: SUAS, Editorial

No 1 AIDU Last Amended 13 FEB 24



- CAUTION.** Chart should only be used for cross check of alts whilst in receipt of an ATC surveillance service.
- Comms Failure. In the event of complete radio comms failure in an aircraft, the pilot is to adopt the appropriate procedures described in RADAR PROCEDURES K1.
- QFE Datum 177ft.
- ④ Active 01 Dec - 01 Mar.
- ⑤ 1700 1500

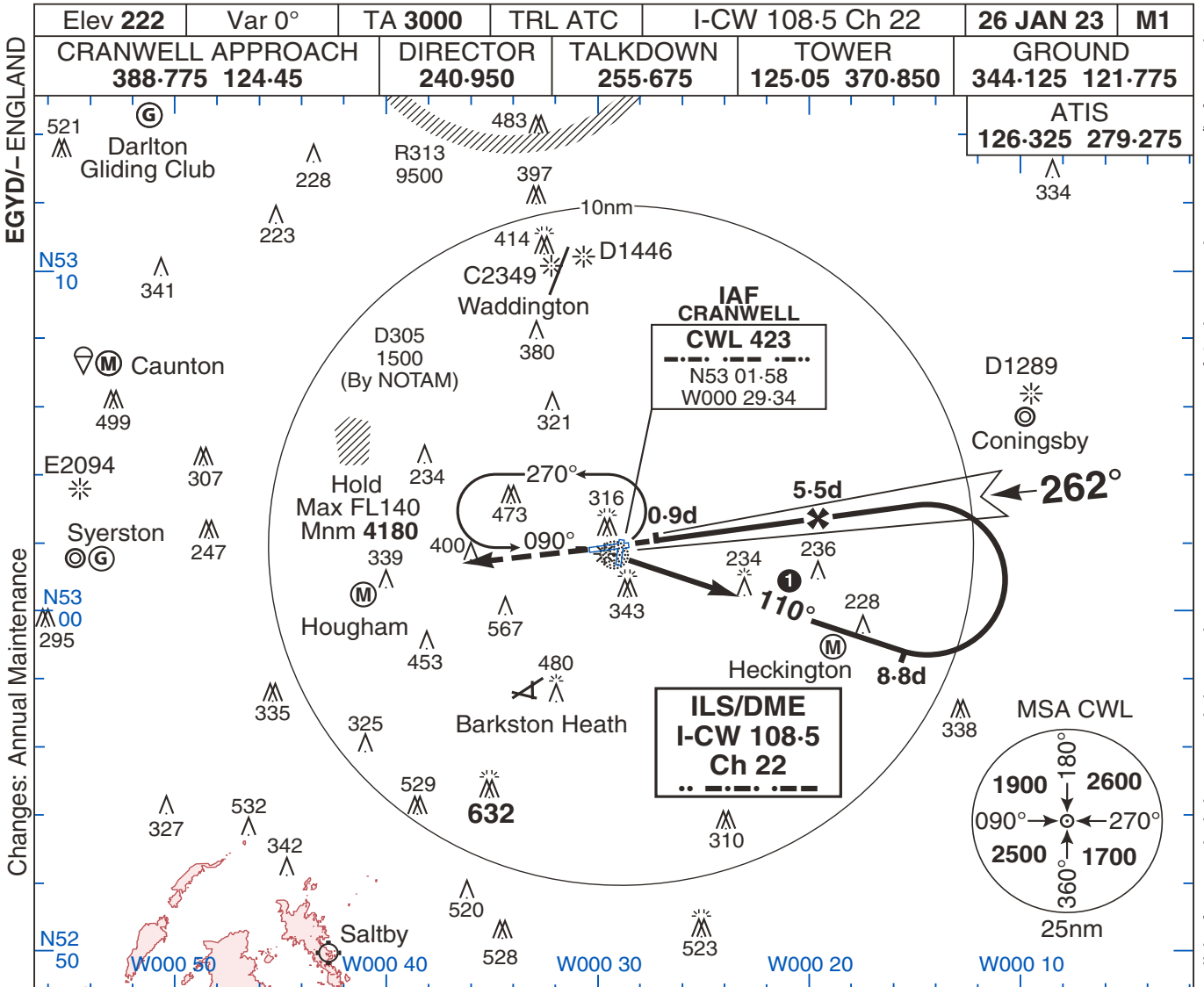
CRANWELL PANS-OPS (ICAO)

ATC SURVEILLANCE MNM ALTITUDE

© UK MOD Crown Copyright 2024. No 1 AIDU is not responsible for, and claims no right to, the content or accuracy of 3rd party documents/information.

NDB 1 to ILS Rwy 26

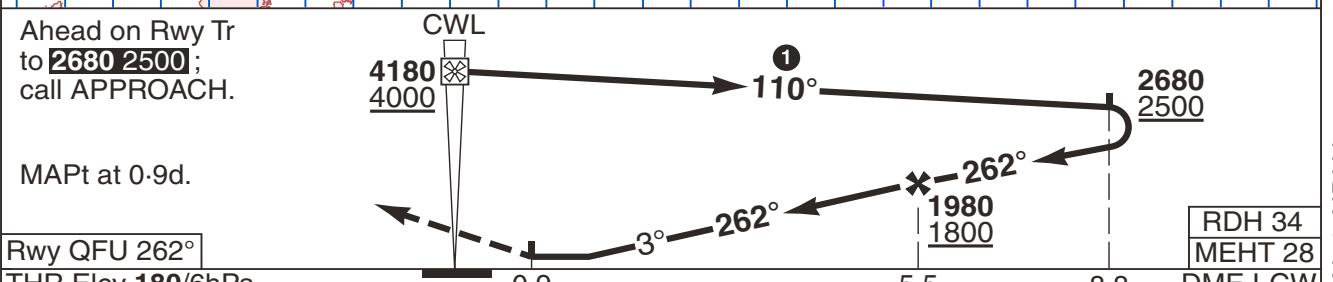
CRANWELL



EGYD/- ENGLAND

Changes: Annual Maintenance

© UK MOD Crown Copyright 2022. No 1 AIDU is not responsible for, and claims no right to, the content or accuracy of 3rd party documents/information.



Ahead on Rwy Tr to 2680 2500 ; call APPROACH.		CWL		110°		2680 2500			
MAPt at 0.9d.		4180 4000		①		1980 1800			
Rwy QFU 262°		0.9		5.5		8.8			
THR Elev 180/6hPa		0.9		5.5		8.8			
No1 AIDU Last Amended 19 NOV 22	MIPS	CAT	ILS ②	LOC ③	CIRC		① Cat AB oubd on Tr 092° to 8-8d. ② When ALS inop increase vis to 1200m. ③ When ALS inop increase vis to 1500m. 4. ILS auto-coupled approaches permitted to Cat 1 DH. 5. I-CW reads zero at THR. 6. Procedure heights referenced to THR Elev. 7. Timing not authorised for defining the MAPt.	DME I-CW	ALT HGT
		A			680 470	5		1810	
		B	380 200 800m	520 340 800m	730 520 1600m	4		1490	
		C			970 760 2400m	3		1170	
GS (kt)		80	120	150	180	210	2	860	680
FAF-MAPt 4.6nm		3:27	2:18	1:50	1:32	1:19			
ROD (fpm)		3°	420	640	800	950			

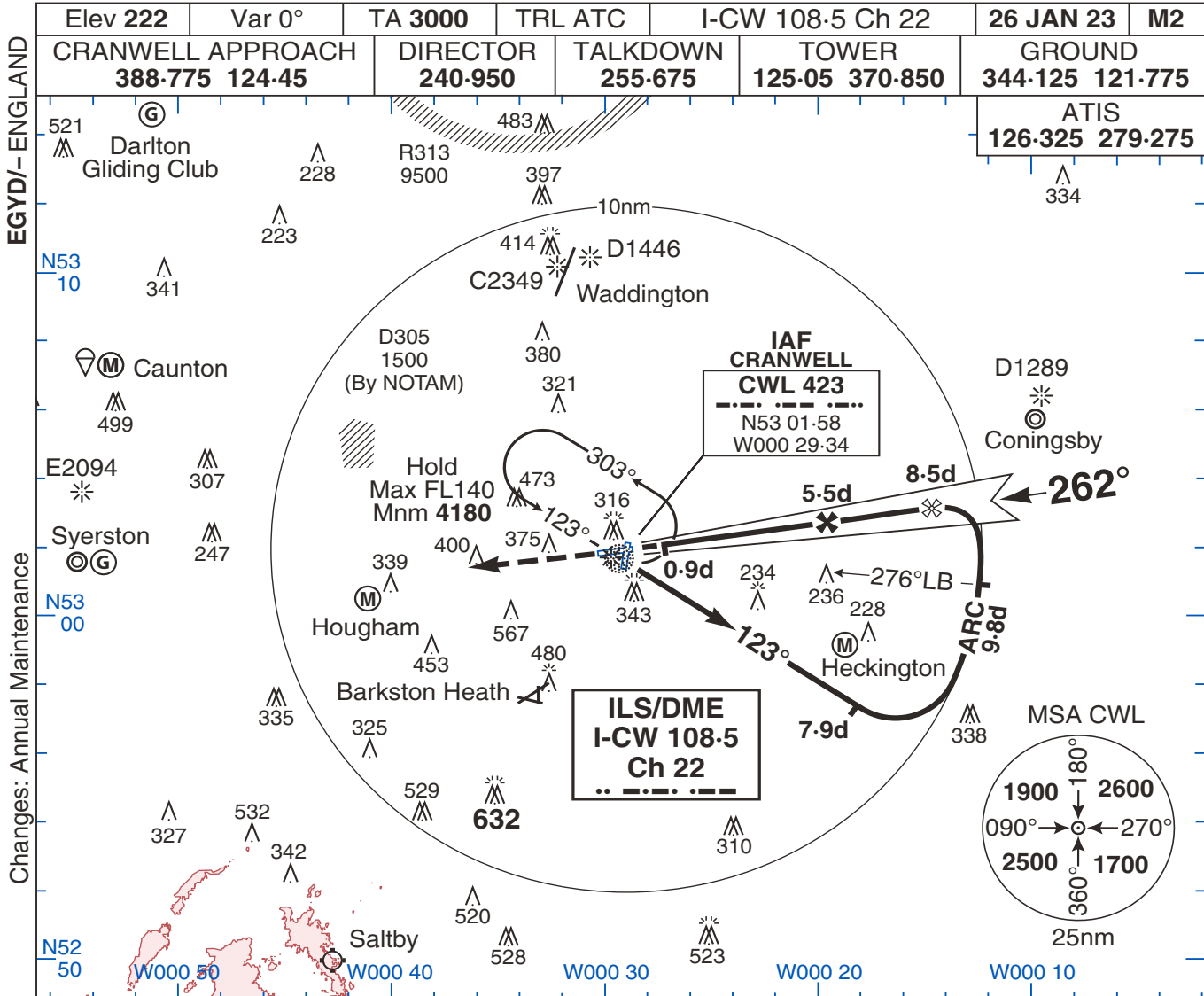
CRANWELL

MIPS

NDB 1 to ILS Rwy 26

NDB 3 to ILS Rwy 26

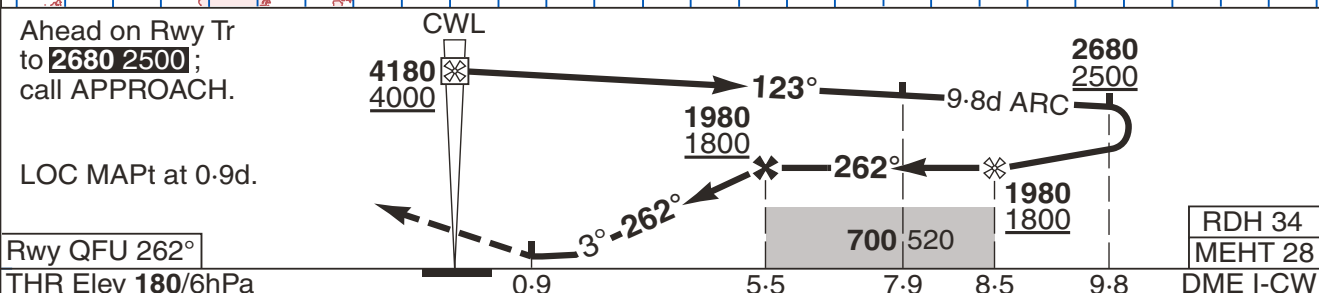
CRANWELL



EGYD/- ENGLAND

Changes: Annual Maintenance

© UK MOD Crown Copyright 2022. No1 AIDU is not responsible for, and claims no right to, the content or accuracy of 3rd party documents/information.



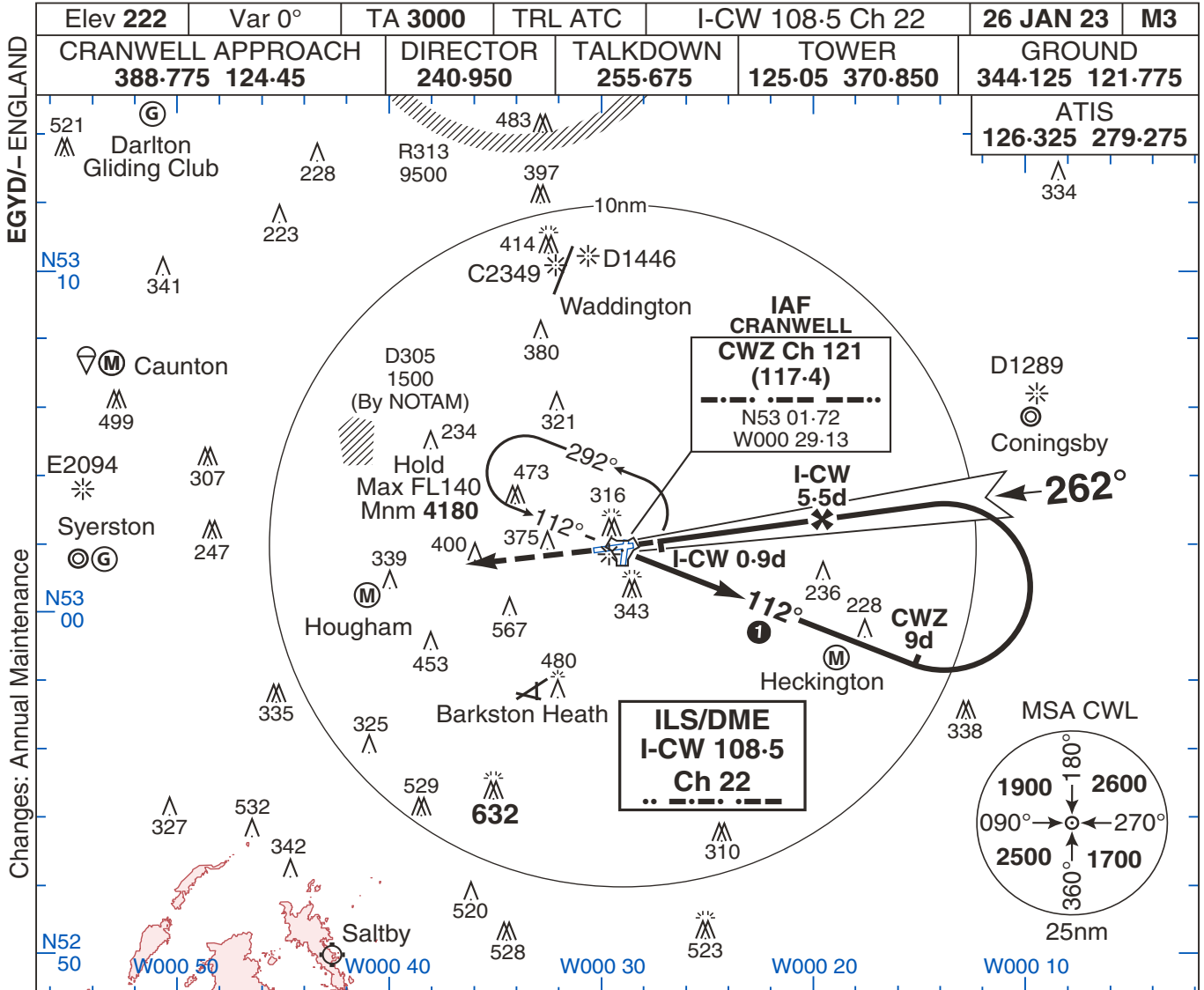
Ahead on Rwy Tr to 2680 2500 ; call APPROACH.		LOC MAPt at 0.9d.		Rwy QFU 262°		THR Elev 180/6hPa		RDH 34		MEHT 28			
								700 520		DME I-CW			
								0.9		5.5 7.9 8.5 9.8			
No1 AIDU Last Amended 19 NOV 22	MIPS	CAT	ILS ①	LOC ②	CIRC			① When ALS inop increase vis Cat ABCD to 1200m and Cat E to 1300m. ② When ALS inop increase vis Cat ABCDE to 1500m. 3. ILS auto-coupled approaches permitted to CAT 1 DH. 4. I-CW reads zero at THR. 5. Procedure heights referenced to THR elev. 6. Timing not authorised for defining the MAPt. 7. Missed approach assessed out to CWZ 25d.				DME I-CW	ALT HGT
		A	380 200 800m	520 340 800m	680 470					5	1810		
		B			730 520					4	1490		
		C			970 760					3	1170		
		D			970 760					2	860		
		E			1070 860						680		
GS (kt)		80	120	150	180	210							
FAF-MAPt 4-6nm		3:27	2:18	1:50	1:32	1:10							
ROD (fpm)		3°	420	640	800	950							

CRANWELL MIPS

NDB 3 to ILS Rwy 26

TAC to ILS Rwy 26

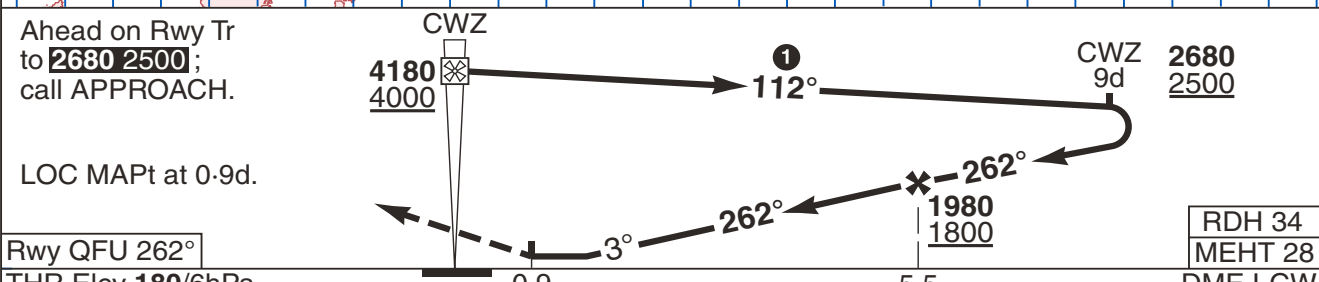
CRANWELL



EGYD/- ENGLAND

Changes: Annual Maintenance

© UK MOD Crown Copyright 2022. No1 AIDU is not responsible for, and claims no right to, the content or accuracy of 3rd party documents/information.



Rwy QFU 262°		THR Elev 180/6hPa		0.9		5.5		RDH 34		MEHT 28	
								DME I-CW			
CAT	ILS ②	LOC ③		CIRC		① Cat AB oubd on Tr 092° to CWZ 9d.		DME	ALT	② When ALS inop increase vis Cat ABCD to 1200m and Cat E to 1300m.	
A	380 200 800m	520 340 800m	680 470		③ When ALS inop increase vis to 1500m.		5	1810	④ ILS auto-coupled approaches permitted to CAT 1 DH.		
B			730 520		⑤ CWZ reads 0.3d at THR.						
C			970 760		⑥ I-CW reads zero at THR.						
D	440 260 800m		970 760		⑦ Procedure heights referenced to THR elev.			3	1170		
E			1070 860				2			860	
GS (kt)		80	120	150	180	210					
FAF-MAPt 4.6nm		3:27	2:18	1:50	1:32	1:10					
ROD (fpm)		3°	420	640	800	960	1110				

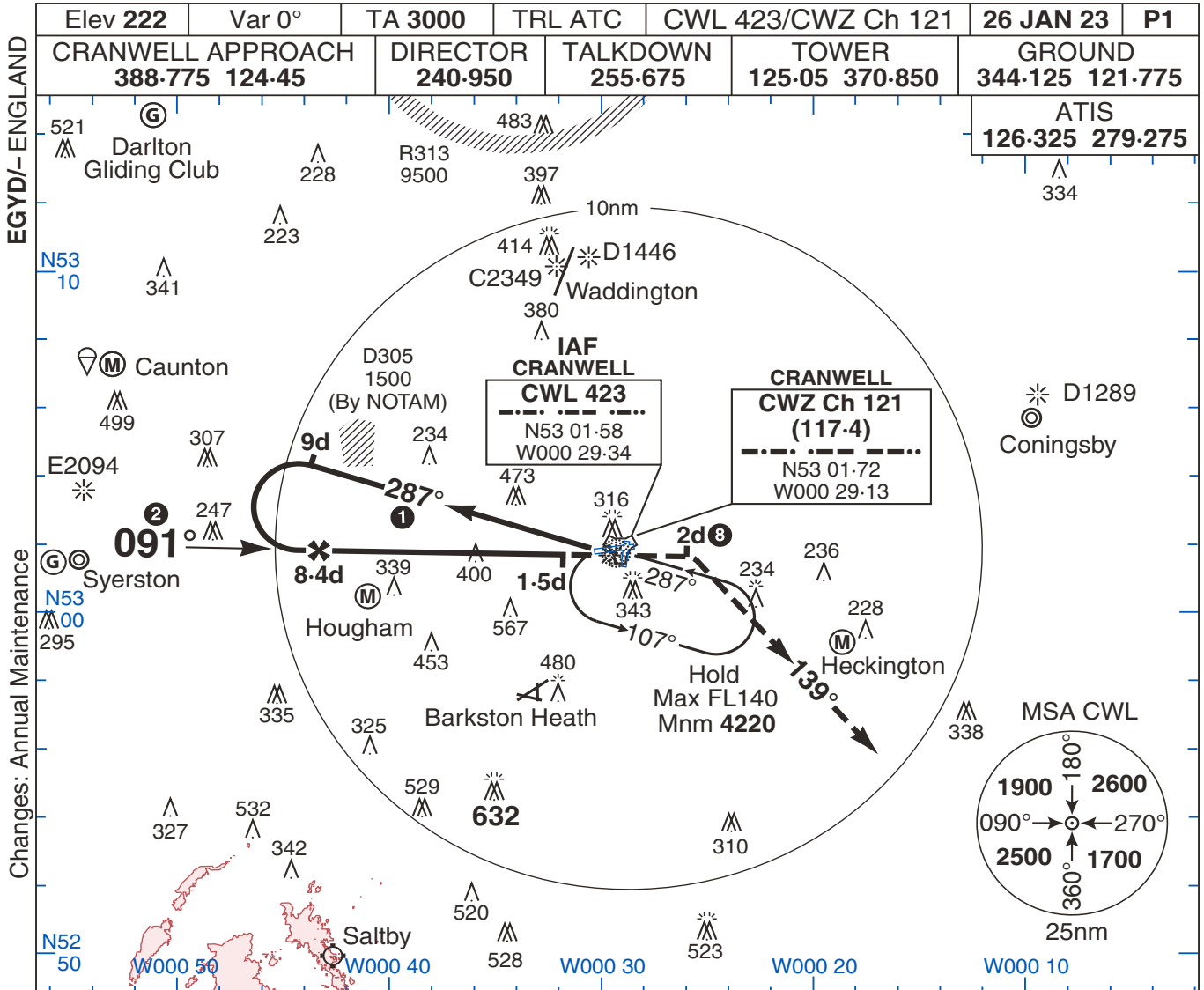
CRANWELL

TAC to ILS Rwy 26

MIPS

NDB/DME Rwy 08 (Cat A,B,C)

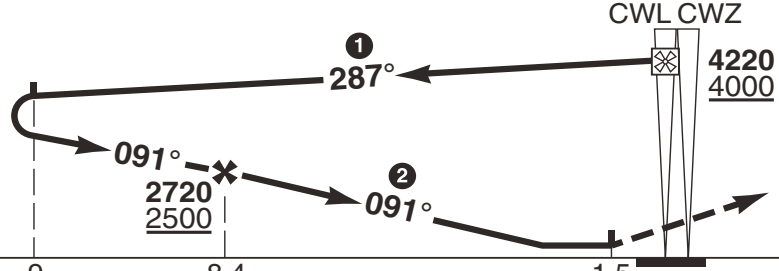
CRANWELL



EGYD/- ENGLAND

Changes: Annual Maintenance

© UK MOD Crown Copyright 2022. No1 AIDU is not responsible for, and claims no right to, the content or accuracy of 3rd party documents/information.



Ahead on Rwy Tr to 1220 1000 or 2d, whichever later, then right onto Tr 139°, climbing to **2720 2500**; call APPROACH.
MAPt at 1.5d.

TCH 27					
MEHT 28					
DME CWZ	9	8.4	1.5		
				Rwy QFU 082°	THR Elev 218/8hPa

CAT	NDB/DME	CIRC					DME CWZ	ALT HGT
		680	470	2000m	730	520		
A	650 430 1500m	N/A					7	2240
B							6	1930
C	650 430 1600m	970 760 2400m					5	1610
GS (kt)		80	120	150	180	210	4	1400
FAF-MAPt 6.9nm		5:12	3:27	2:46	2:18	1:58	3	1290
ROD (fpm)		3°	420	640	800	950	2	970
								760
								650
								440

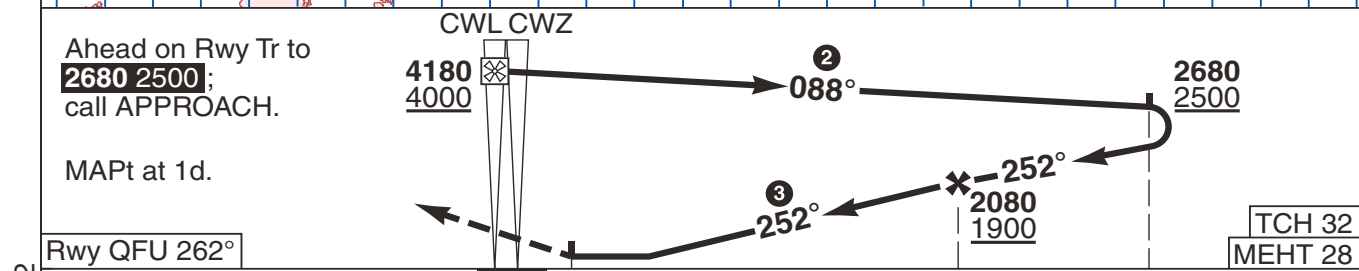
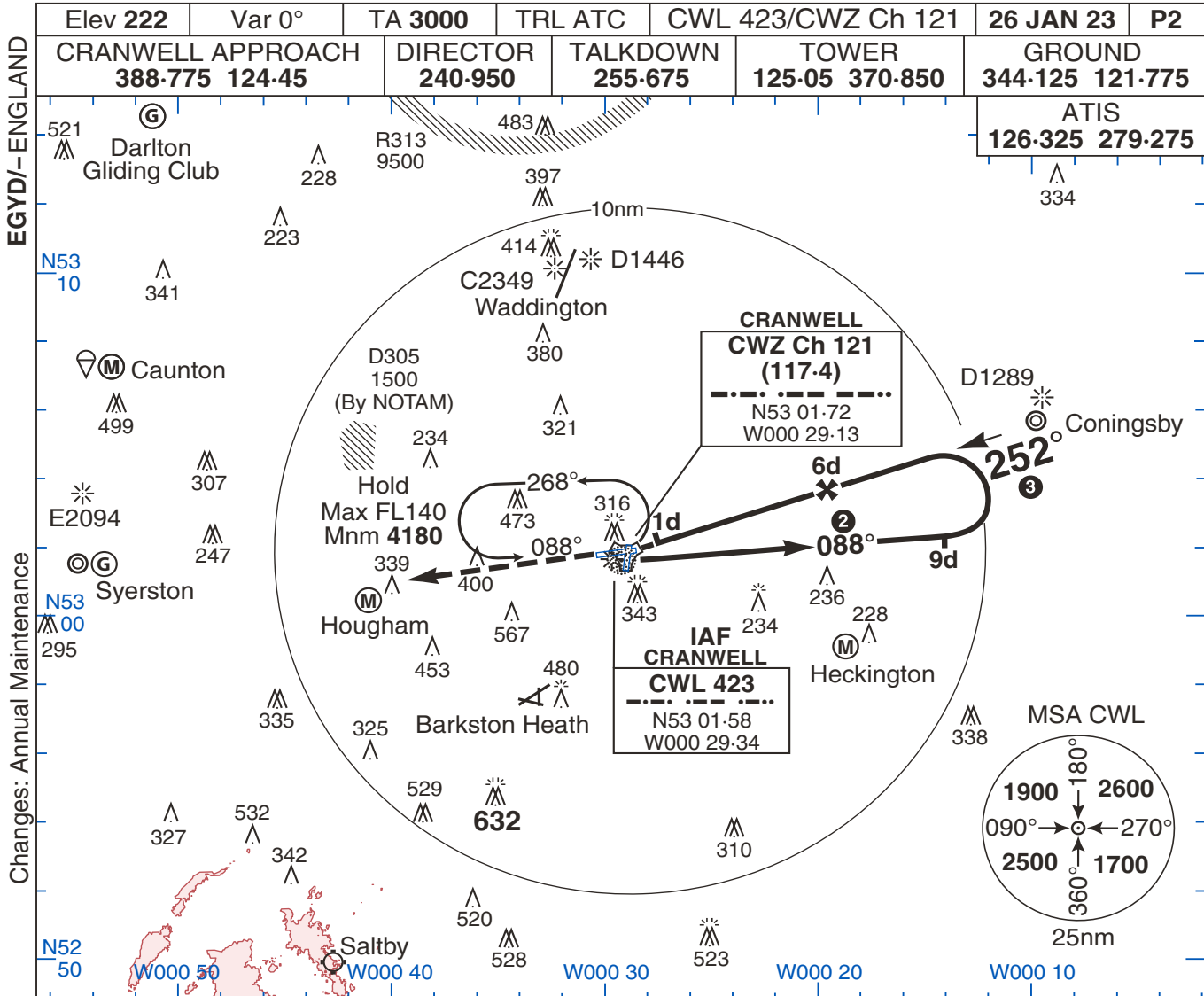
- 1 Cat AB oubd on Tr 280° to 9d.
- 2 FAT offset 9° left of RCL.
- 3 When ALS inop increase vis Cat ABC to 2000m.
4. CWZ reads 0.7d at THR.
5. Procedure heights referenced to AD elev.
6. Timing not authorised for defining the MAPt.
7. Missed approach assessed out to CWZ 25d.
- 8 Or 1220 1000, whichever is later.

CRANWELL MIPS

NDB/DME Rwy 08 (Cat A,B,C)

NDB/DME Rwy 26 (Cat A,B,C)

CRANWELL



Rwy QFU 262°		THR Elev 180/6hPa		TCH 32		MEHT 28		
CAT		NDB/DME ^④		CIRC		DME ALT		
MIPS	A	560 380 1000m		680 470 1700m		5	1720	
	B	N/A		730 520 1700m		4	1410	
	C	590 410 1200m		970 760 2400m		3	1090	
GS (kt)		80	120	150	180	210	2	770
FAF-MAPt 5nm		3:45	2:30	2:00	1:40	1:26		590
ROD (fpm) 3°		420	640	800	950	1110		

1. Procedure hghts are ref to THR Elev.
2. Cat AB oubd on Tr 081° to 9d.
3. FAT offset 10° right of RCL.
4. When ALS inop increase vis Cat AB to 1700m and Cat C to 1900m.
5. CWZ reads 0.3d at THR.
6. Timing not authorised for defining the MAPt.

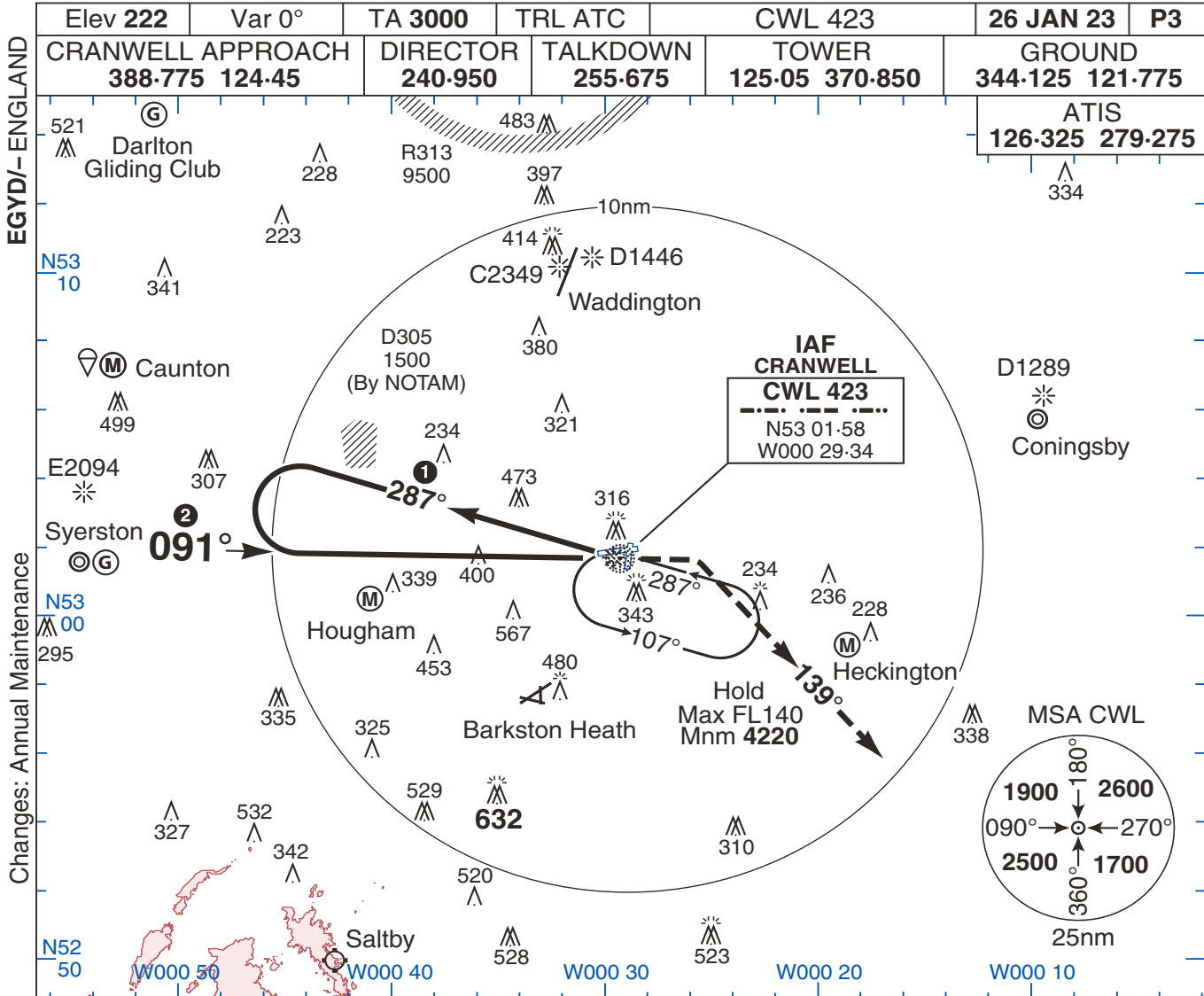
CRANWELL MIPS

NDB/DME Rwy 26 (Cat A,B,C)

© UK MOD Crown Copyright 2022. No1 AIDU is not responsible for, and claims no right to, the content or accuracy of 3rd party documents/information.

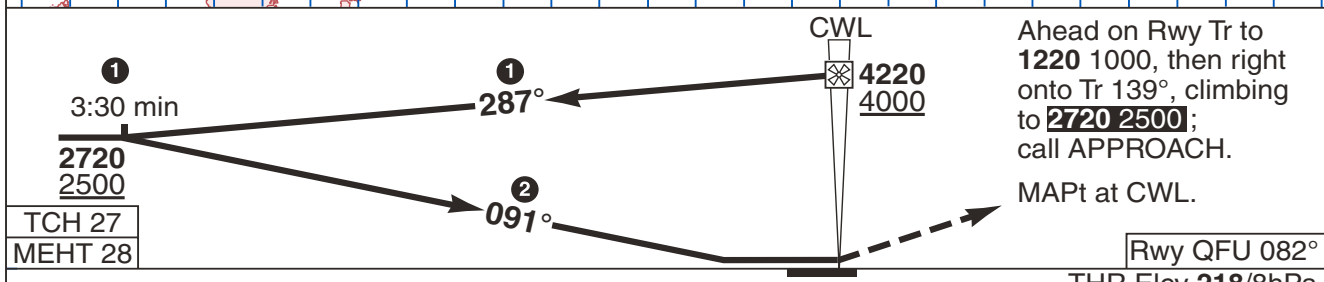
NDB Rwy 08 (Cat A,B,C)

CRANWELL



EGYD/- ENGLAND
Changes: Annual Maintenance

© UK MOD Crown Copyright 2022. No1 AIDU is not responsible for, and claims no right to, the content or accuracy of 3rd party documents/information.

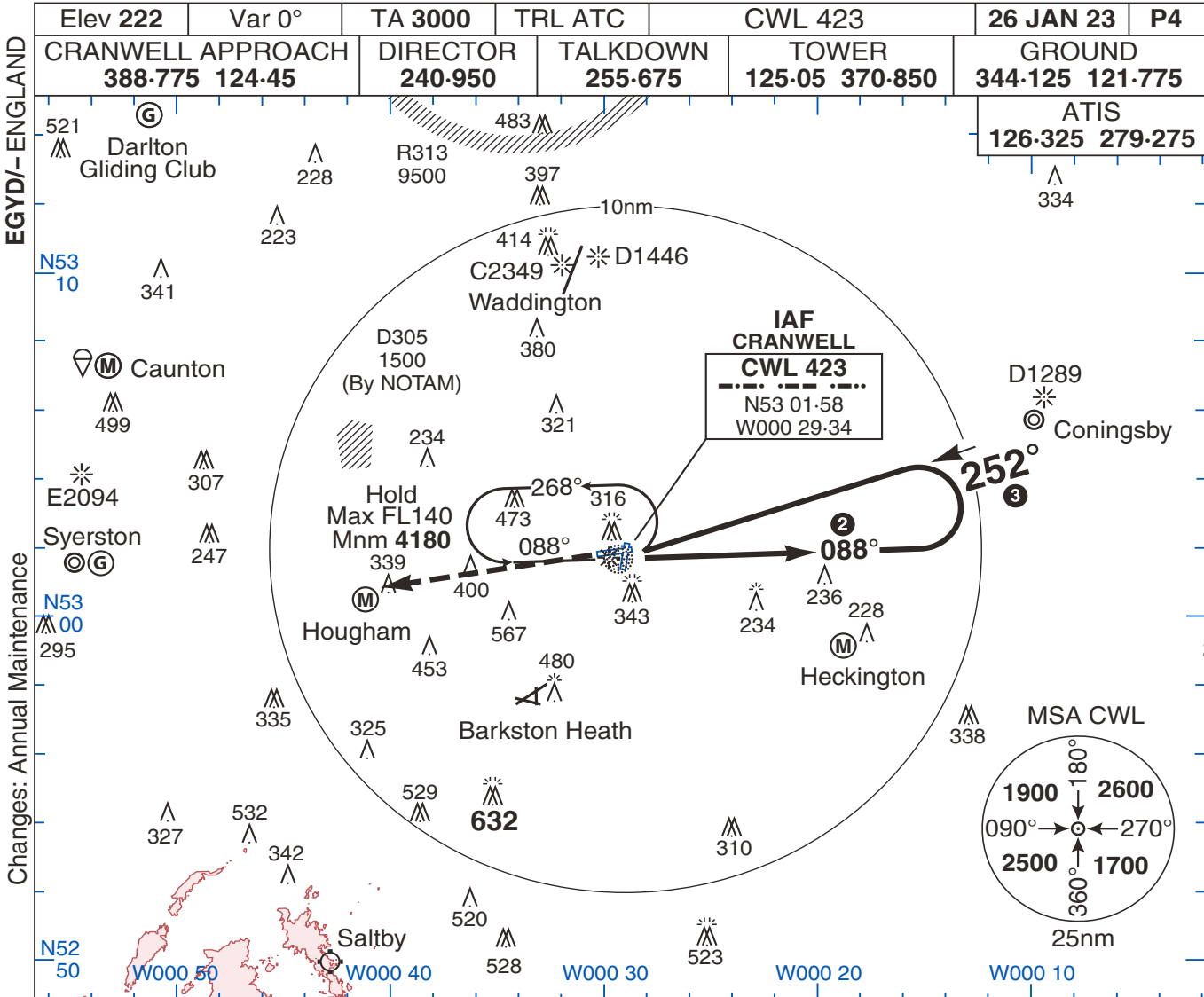


MIPS	CAT	NDB ^③	CIRC				
	A	960 750 1500m	960 750 3500m				
	B	N/A	970 760 3500m				
C	960 750 3000m						
GS (kt)		80	120	150	180	210	
ROD (fpm)		3°	420	640	800	950	1110

CRANWELL NDB Rwy 08 (Cat A,B,C)

NDB Rwy 26 (Cat A,B,C)

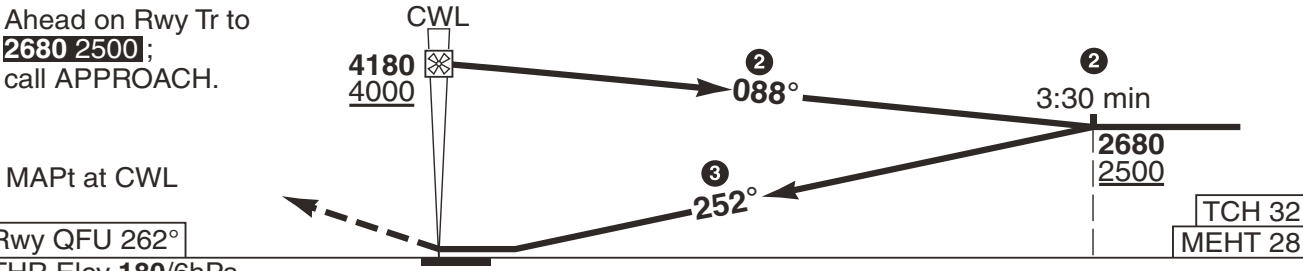
CRANWELL



EGYD/- ENGLAND

Changes: Annual Maintenance

© UK MOD Crown Copyright 2022. No1 AIDU is not responsible for, and claims no right to, the content or accuracy of 3rd party documents/information.



No1 AIDU Last Amended 19 NOV 22

Ahead on Rwy Tr to 2680 2500 ; call APPROACH.		CWL		② 088°		② 3:30 min		③ 252°		TCH 32		MEHT 28			
MAPt at CWL		4180 4000													
Rwy QFU 262°		THR Elev 180/6hPa													
CAT	NDB ④	CIRC					1. Procedure hghts are ref to THR Elev								
MIPS	A	670 490 1500m	N/A	700 490 2300m					② Cat AB oubd on Tr 081° for 4 min and Cat C oubd on Tr 088° for 3:30min.						
	B			730 520 2300m					③ FAT offset 10° right of RCL.						
	C			970 760 2400m					④ When ALS inop increase vis Cat ABC to 2300m.						
GS (kt)		80	120	150	180	210	5. Missed approach assessed out to CWZ 25d.								
ROD (fpm)		3°	420	640	800	960	1110	6. Timing not authorised for defining the MAPt.							

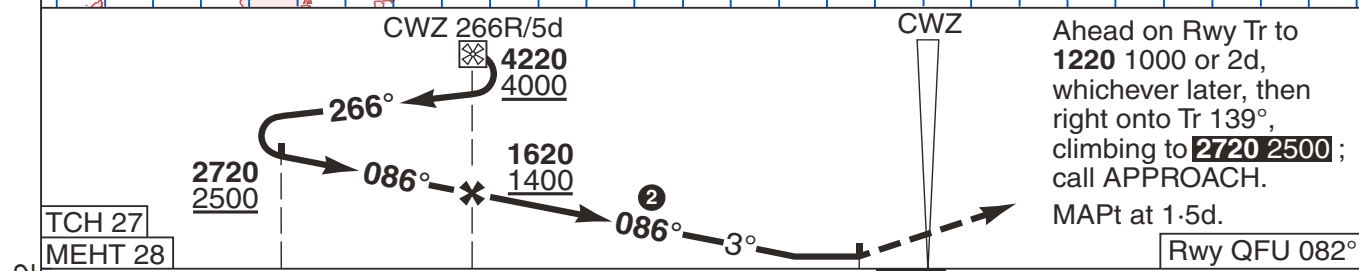
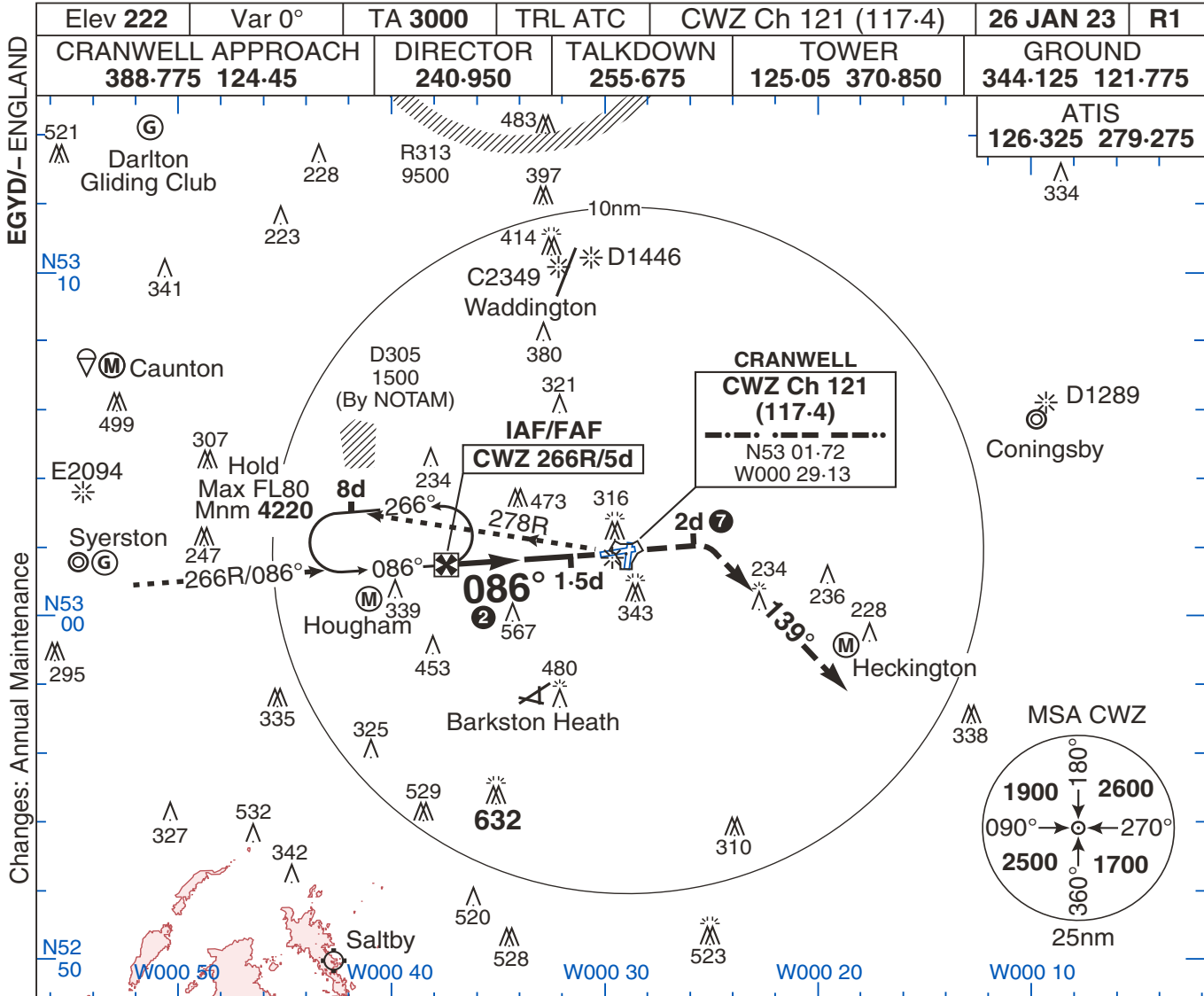
CRANWELL

MIPS

NDB Rwy 26 (Cat A,B,C)

TAC Rwy 08 (Cat A,B)

CRANWELL



TCH 27		MEHT 28		DME CWZ		THR Elev 218/8hPa	
CAT		TAC ③		CIRC		1. Hold entry restricted to along 266R inbd and along 278R to the end of the oubd leg 8d limit.	
MIPS	A	650 430 1500m		680 470 2000m		DME CWZ	ALT HGT
	B	N/A		730 520 2000m		4	1290
GS (kt)		80	120	150	180	210	3
FAF-MAPt 3.5nm		2:39	1:45	1:24	1:10	1:00	1080
ROD (fpm)		3°	420	640	800	960	760
Rwy QFU 082°		2. FAT offset 4° left of RCL.					
DME CWZ		3. When ALS inop increase vis to 2000m.					
THR		4. CWZ reads 0.7d at THR.					
Elev		5. Procedure heights referenced to AD elev.					
8hPa		6. Missed approach assessed out to CWZ 25d.					
		7. Or 1220 1000, whichever is later.					

No1 AIDU Last Amended 19 NOV 22

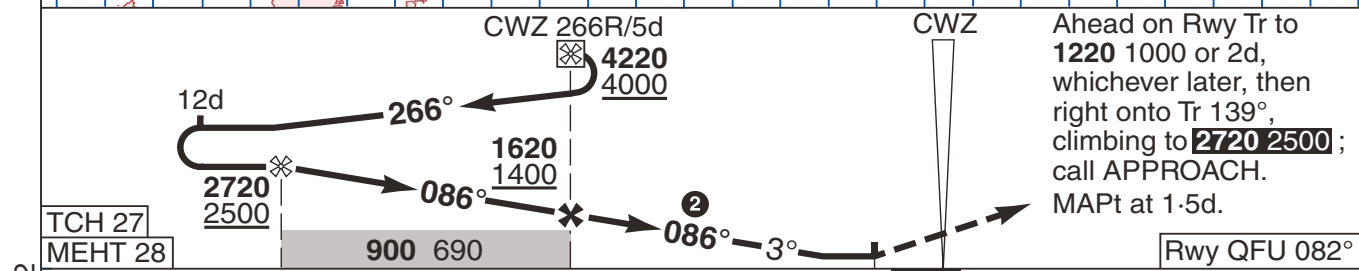
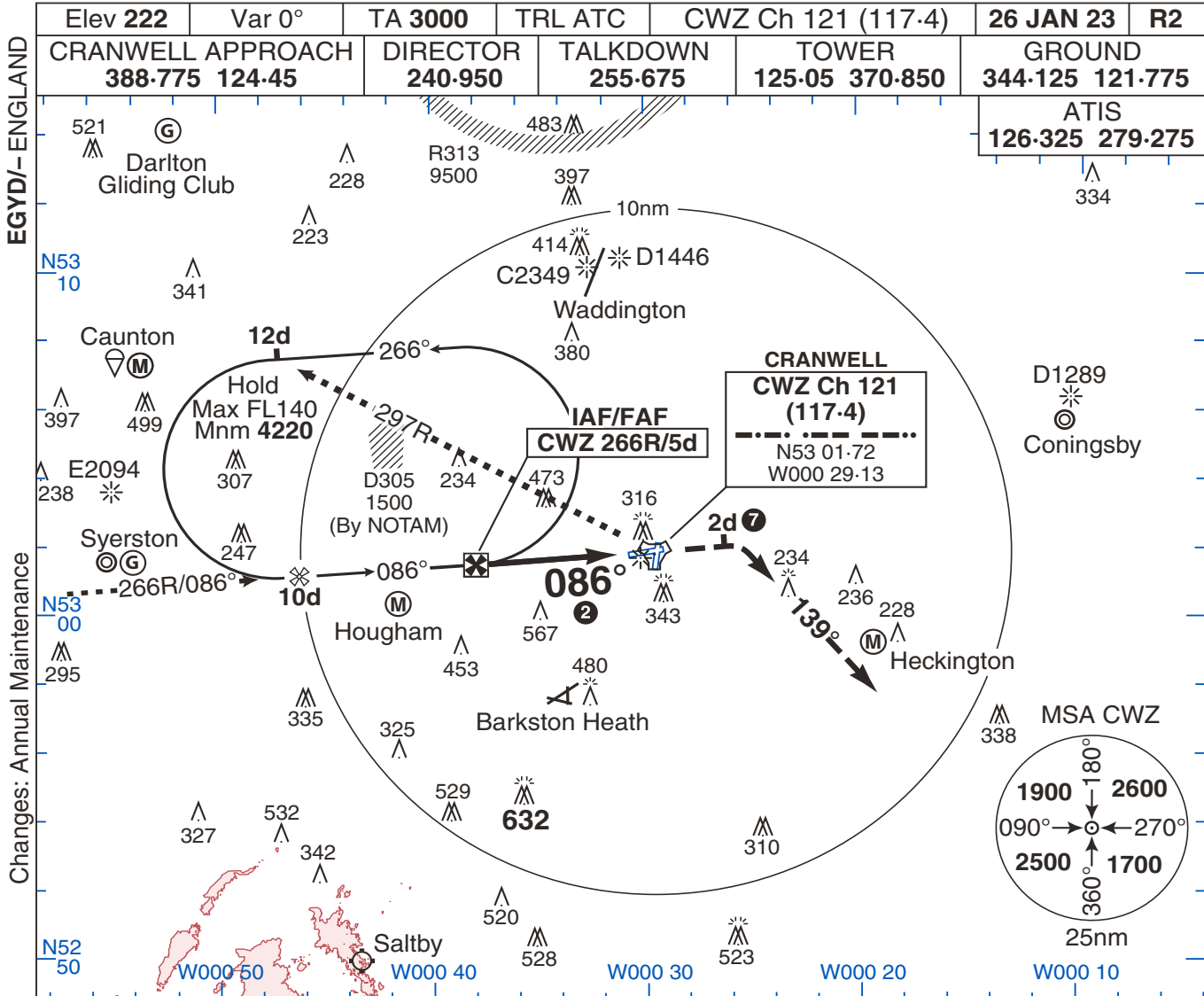
© UK MOD Crown Copyright 2022. No1 AIDU is not responsible for, and claims no right to, the content or accuracy of 3rd party documents/information.

CRANWELL MIPS

TAC Rwy 08 (Cat A,B)

TAC Rwy 08 (Cat C,D,E)

CRANWELL



TCH 27						Ahead on Rwy Tr to 1220 1000 or 2d, whichever later, then right onto Tr 139°, climbing to 2720 2500; call APPROACH. MAPt at 1.5d.	
MEHT 28	900 690					Rwy QFU 082°	
DME CWZ	10	5			1.5	THR Elev 218/8hPa	
CAT	TAC ③	CIRC				DME	ALT
C		970	760	2400m		4	1290
D	650 430	970	760	3600m		3	970
E	1600m	1070	860	3600m			760
GS (kt)		80	120	150	180	210	
FAF-MAPt 3.5nm		2:39	1:45	1:24	1:10	1:00	
ROD (fpm)		3°	420	640	800	960	1110

1. Hold entry **restricted** to along 266R inbd and along 297R to the end of the oubd leg 12d limit.
2. FAT offset 4° left of RCL
3. When ALS inop increase vis Cat CDE to 2000m.
4. CWZ reads 0-7d at THR.
5. Procedure heights referenced to AD elev.
6. Missed approach assessed out to CWZ 25d.
7. Or 1220 1000, whichever is later.

No1 AIDU Last Amended 19 NOV 22

© UK MOD Crown Copyright 2022. No1 AIDU is not responsible for, and claims no right to, the content or accuracy of 3rd party documents/information.

CRANWELL MIPS

TAC Rwy 08 (Cat C,D,E)

TAC Rwy 26

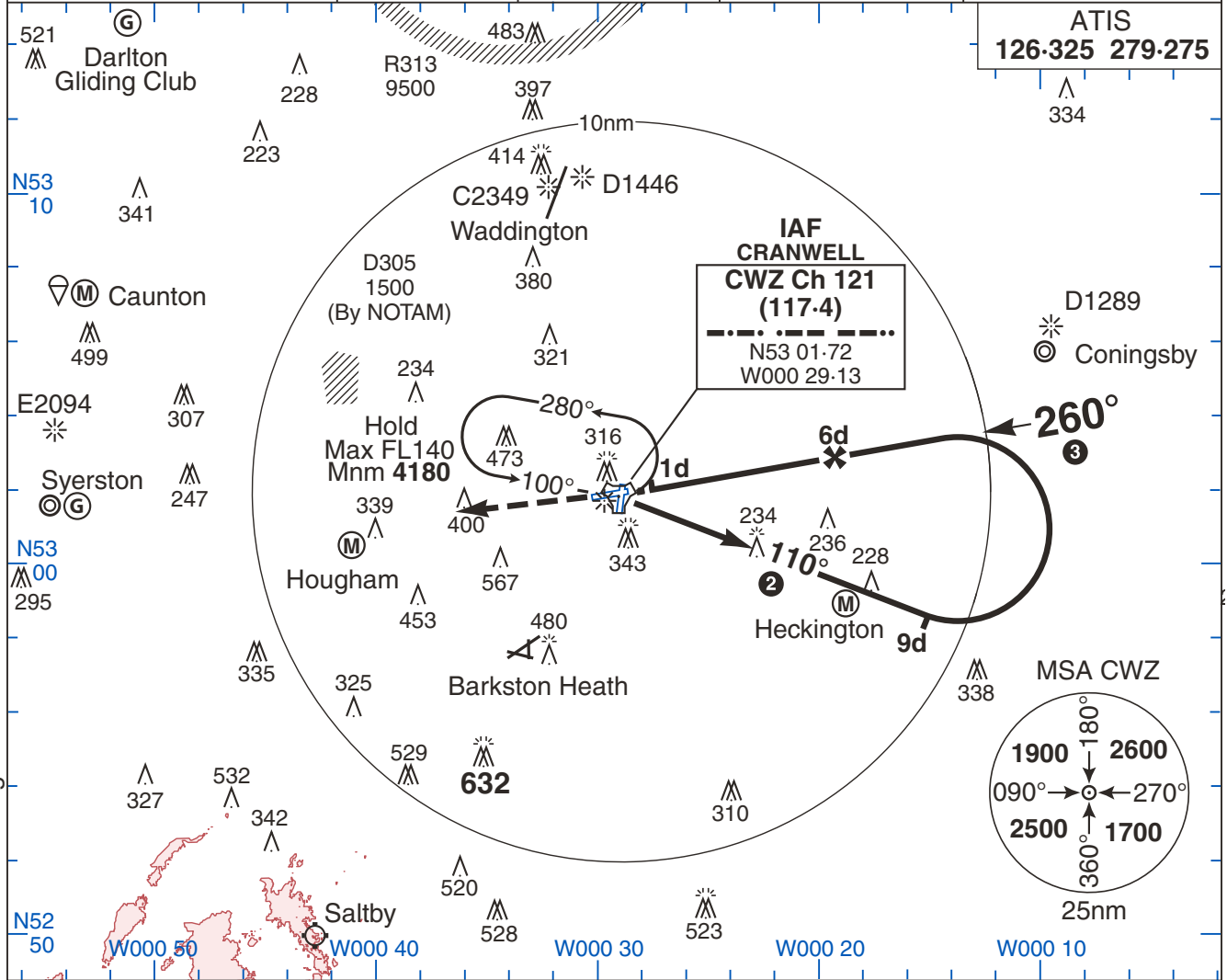
CRANWELL

Elev 222	Var 0°	TA 3000	TRL ATC	CWZ Ch 121 (117.4)	26 JAN 23	R3
CRANWELL APPROACH 388.775 124.45		DIRECTOR 240.950	TALKDOWN 255.675	TOWER 125.05 370.850	GROUND 344.125 121.775	

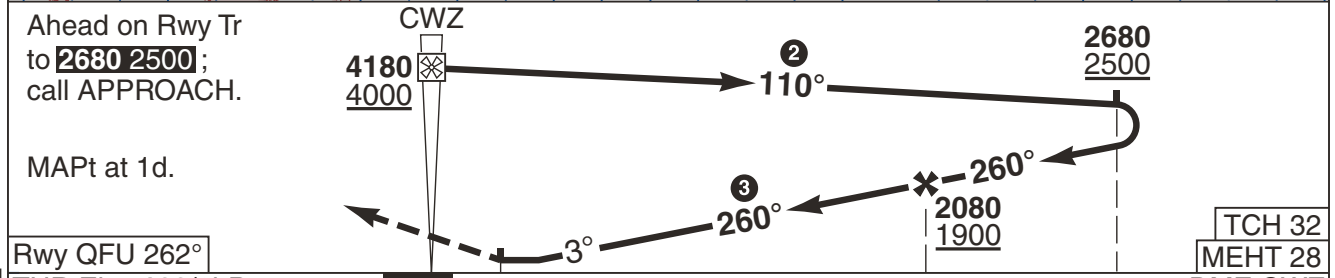
ATIS 126.325 279.275

EGYD/-ENGLAND

Changes: Annual Maintenance



© UK MOD Crown Copyright 2022. No1 AIDU is not responsible for, and claims no right to, the content or accuracy of 3rd party documents/information.



Ahead on Rwy Tr to **2630 2500**; call APPROACH.
MAPt at 1d.

Rwy QFU 262°		THR Elev 180/6hPa					TCH 32			
		1					6			
		9					DME CWZ			
MIPS	CAT	TAC 4		CIRC					DME	ALT
	A			680	470			CWZ	HGT	
	B			730	520			5	1720	
	C	550 370		970	760			4	1400	
	D	1000m		970	760			3	1080	
E			1070	860			2	770		
				3600m				590		
GS (kt)		80	120	150	180	210				
FAF-MAPt 5nm		3:45	2:30	2:00	1:40	1:26				
ROD (fpm)		3°	420	640	800	960				

1. Procedure hgts are ref to THR Elev.
2. Cat AB oubd on Tr 090° to 9d.
3. FAT offset 2° right of RCL.
4. When ALS inop increase vis Cat ABCDE to 1700m.
5. CWZ reads 0.3d at THR.
6. Procedure heights referenced to THR elev.
7. Missed approach assessed out to CWZ 25d.
8. Timing not authorised for defining the MAPt.

No1 AIDU Last Amended 19 NOV 22