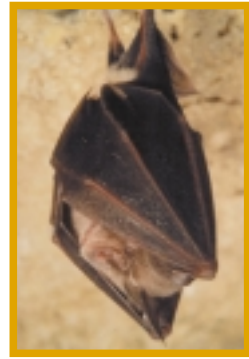


Hedges



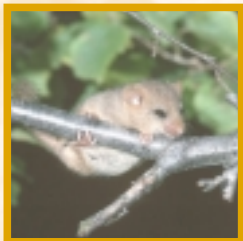
Hedgerows are essential habitats for a myriad of wildlife and are often very old.

Along this trail you will see flower rich road verges and hedgerows as old and species rich as any in the South West.

Hooper's Hedgerow Hypotheses suggests that you can estimate the age of a hedge by counting the number of woody species and multiplying by 100. As you walk downhill past Langridge Church look in the hedgerow on your left.

You should spot ash, oak, elder, hawthorn, blackthorn, field maple, dogrose, hazel and elm, suggesting the hedge could be 900 years old.

Within the same hedge look out dogs mercury, a plant which indicates ancient hedges, and the climbers – ivy, hops and clematis (old man's beards).

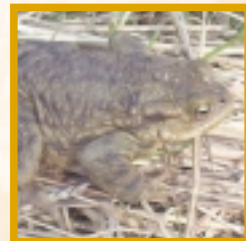


Walls

Dry Stone Walls are a common feature of the Cotswolds where the thin soil is littered with limestone rocks which are used without mortar to make the walls.

Dry stone walls are often built in exposed and windswept places and so provide vital shelter for animals (and the odd walker!) Small mammals and birds will nest in walls, whilst invertebrates, reptiles and amphibians enjoy gaps to hibernate in and warm spots to sunbathe.

Plants on walls must with stand extreme conditions. Look out for ivy leaved toadflax and paint-spot like lichen. These lichens grow at about 3mm a year depending on air quality. This gives you an idea of the age of these walls which are linked with the civil war armaments and probably date back many hundreds of years.



This leaflet is available in Braille or large print. Contact 01225 477652.

While walking please keep within the Countryside Code, remembering to:

- leave gates as you find them,
- keep dogs on leads
- take litter home

Features

- Species rich hedgerows, ancient dry stone walls, spectacular views.
- Some hills and uneven ground. Sorry not suitable for wheel chairs or pushchairs.
- Mud and long grass in spring make waterproof trousers and boots advisable in wet weather. Allow 2 hours.
- Take particular care of traffic on Lansdown Hill and Langridge Lane.

Park and ride

Start from the Park and Ride on Lansdown Hill 2 miles north of Bath. Car park open 6am-9pm Monday to Saturday. Also very limited parking by the village hall.

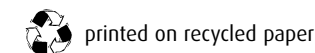
If you live in Bath or are visiting why not catch the bus to the start of the walk? Buses go every 15 minutes from Milsom Street – Monday to Saturday 6am-9pm. £1.70 return (correct at time of print).



Field Boundaries Project



BATH & NORTH EAST SOMERSET



Why not walk?



Discover the wildlife of hedges and dry stone walls.

A beautiful 4 mile walk from the Lansdown Park and Ride, Bath.

On the walls around the trail you may spot the following



Snail



Ivy Leaved Toadflax



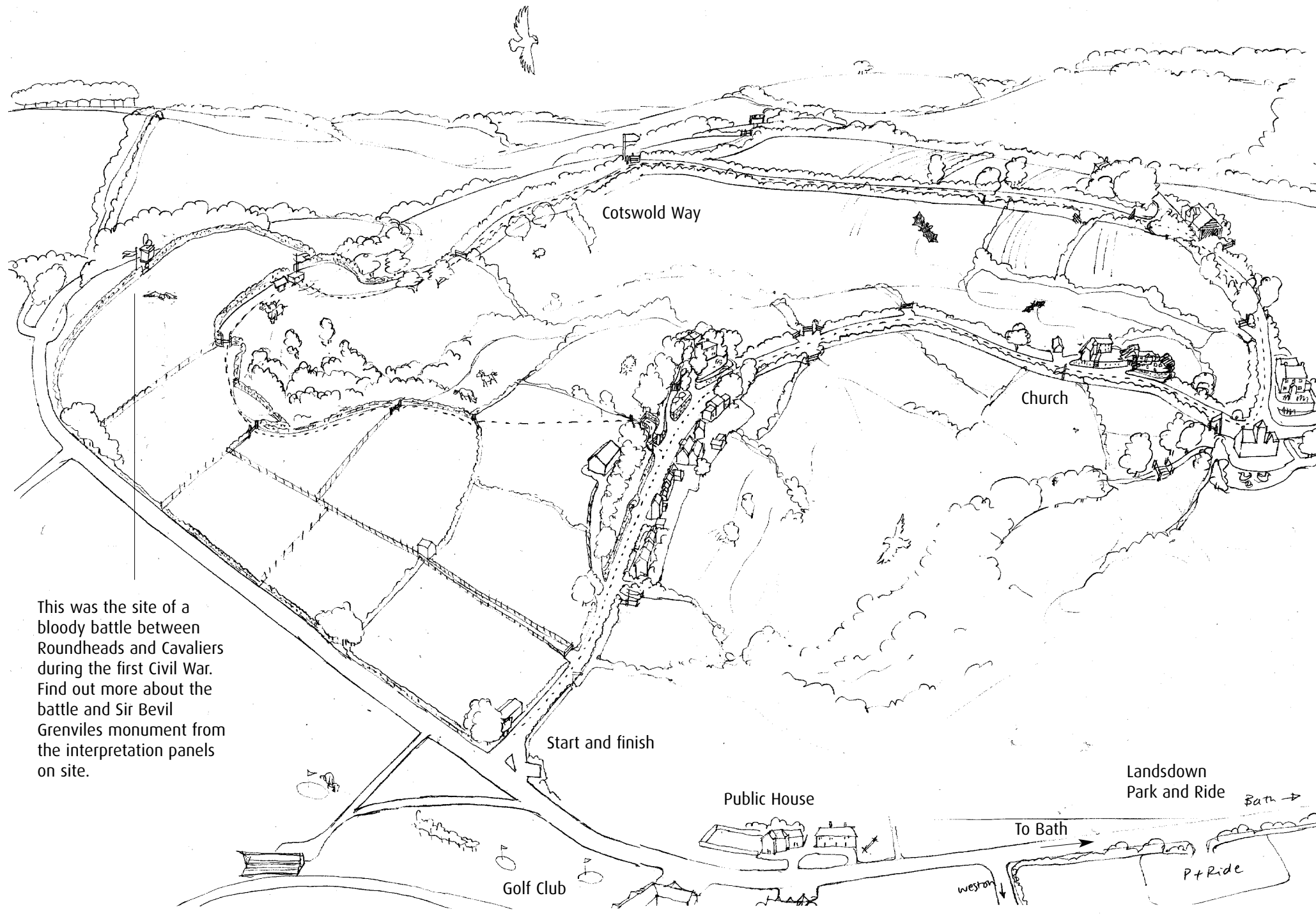
Black Lichen



White Lichen



Yellow Lichen



This was the site of a bloody battle between Roundheads and Cavaliers during the first Civil War. Find out more about the battle and Sir Bevil Grenvilles monument from the interpretation panels on site.

On the walls around the trail you may spot the following



Blackthorn



Primrose



Dog Rose



Rosehips



Dogs Mercury