

Statistics for Mission 2016

Research and Statistics
Church House
Great Smith Street
London SW1P 3AZ

Tel: 020 7898 1547

Published 2017 by Research and Statistics

Copyright © Research and Statistics 2017

All rights reserved.

This document is available on line at <http://www.churchofengland.org/about-us/facts-stats/research-statistics.aspx>

Any reproduction of the whole or any part of this document should reference:

Church of England Research and Statistics, Great Smith Street, London SW1P 3AZ

Email: statistics.unit@churchofengland.org

Twitter: [@cofestats](https://twitter.com/cofestats)

The opinions expressed in this document are those of the authors and do not necessarily reflect the official policy of the General Synod or The National Church Institutions of the Church of England.

Preface (by Dr Bev Botting, Head of the Research and Statistics unit)

Accurate information about levels of Church of England attendance and participation is vital. The Church of England is in the early stages of a process of Renewal and Reform, and as with any new initiative some of its elements are likely to be successful and some not; writing as a statistician, I enthusiastically commend the intention of the Renewal and Reform programme to thoroughly evaluate its work. Success can only be assessed, lessons learned, and good practice shared, by using high-quality data.

The annual collection of Statistics for Mission seeks information from each of the almost 16,000 Church of England churches. The collection of this information involves thousands of incumbents and volunteers, as well as the hard work of staff in 42 different dioceses. The fact that the dataset is more complete and available sooner than at any time in recent years is testament to their efforts and commitment.

Even the most dedicated of church-goers could only ever attend a small fraction of the Church of England's churches; Statistics for Mission is a regular reminder to me that not every church resembles my church, and the information provided is essential to avoid decisions being made on the basis of anecdote or limited local knowledge.

Statistics for Mission measures attendance in several different ways, each of which is a useful proxy for "the size" of a church. All of these measures are helpful in some settings and unhelpful in others. There is no single perfect measure – churches are too complex and diverse for that – so a wise user of these statistics would avoid fixating on one measure to the exclusion of all others.

This Statistics for Mission report offers a broad overview of the key summary statistics. Attendance and participation broken down by diocese can be found in the Appendix, with electronic tables available on the Research and Statistics web page: <https://www.churchofengland.org/about-us/facts-stats/research-statistics.aspx>

More detailed information is provided to dioceses and to churches to help them plan and evaluate their mission and ministry. Church attendance and participation information often needs to be considered alongside the local context; to enable this assessment, the Research and Statistics unit has mapped census and deprivation information onto parish boundaries; this information is publically available online.

Statistics for Mission is only one facet of the work of the Research and Statistics unit. You can keep up to date with our other work via our web page and twitter feed: [@cofestats](#)

It has been a pleasure working with churches, parishes, and dioceses to collect, check, and publish Statistics for Mission. My team and I have been privileged to speak with staff in the vast majority of dioceses during recent months, as well as having direct contact with people in hundreds of churches around the country. The willingness that we have encountered to engage thoughtfully with the realities of church attendance augurs well for the capacity of the Church of England to change and to grow in the future.

Executive summary

2016 Church of England participation summary

- The Worshipping Community of Church of England churches in 2016 was 1.1 million people, of whom 20% were aged under 18, 49% were aged 18-69, and 31% were aged 70 or over.
- On average, 930,000 people (86% adults, 14% children under 16) attended Church of England services and acts of worship each week in October 2016. A further 180,000 people attended services for schools in Church of England churches each week.
- Usual Sunday attendance at Church of England churches in 2016 was 740,000 people (86% adults, 14% children under 16).
- 1.2 million people attended Church of England churches at Easter 2016 (of whom 71% received communion).
- 2.6 million people attended Church of England churches at Christmas 2016 (of whom 34% received communion). During Advent, 2.5 million people attended special services for the congregation and local community, and 2.8 million people attended special services for civic organisations and schools.
- There were 120,000 Church of England baptisms and services of thanksgiving for the gift of a child during 2016.
- There were 45,000 Church of England marriages and services of prayer and dedication after civil marriages during 2016.
- There were 139,000 Church of England-led funerals during 2016, 57% of which took place in churches and 43% at crematoria/cemeteries.

Trends in participation

- Over recent decades, attendance at Church of England church services has gradually fallen. These trends continued in 2016. Most key measures of attendance fell by between 10% and 15% between 2006 and 2016.
- Although the overall pattern is one of gradual decline, this masks the differences in experience in individual parishes over the past 10 years. In 11% of parishes Usual Sunday attendance has increased. In 38% of parishes attendance has decreased. In 52% of parishes there has been no clear trend.

Contents

Preface (by Dr Bev Botting, Head of the Research and Statistics unit).....	2
Executive summary.....	3
2016 Church of England participation summary.....	3
Trends in participation.....	3
Acknowledgements.....	6
Statistics for Mission: measuring Church of England attendance and participation.....	7
Church of England attendance, 2016.....	7
Church of England baptisms, marriages, and funerals, 2016.....	8
Church-level attendance and participation, 2016.....	9
Table 1: Church participation summary, 2016.....	9
Church of England attendance per capita, 2016.....	10
Worshipping Community joiners and leavers, 2016.....	10
Figure 1a: Adult Worshipping Community joiners, 2016.....	11
Figure 1b: Child Worshipping Community joiners, 2016.....	11
Figure 1c: Adult Worshipping Community leavers, 2016.....	11
Figure 1d: Child Worshipping Community leavers, 2016.....	11
Trends in Church of England participation, 2006-2016.....	12
Figure 2: Average weekly attendance (October count), 2006-2016.....	13
Figure 3: Usual Sunday attendance, 2006-2016.....	13
Figure 4: Easter communicants and attendance, 2006-2016.....	13
Figure 5: Christmas communicants and attendance, 2006-2016.....	13
Figure 6: Baptisms and thanksgivings, 2006-2016.....	14
Figure 7: Marriages and services of prayer and dedication, 2006-2016.....	14

Figure 8: Funerals, 2006-2016.....	14
Figure 9: Baptisms, marriages, and funerals, 2006-2016.....	14
Figure 10: Church of England attendance summary, 2006-2016.....	15
Figure 11: Church of England infant baptisms, marriages, and funerals as a percentage of all births, marriages, and deaths, 2006-2016	15
Table 2: Church of England attendance and participation trends, 2006-2016.....	16
Figure 12: Church of England participation summary, 1960-2016.....	17
Parish-level trends, 2006-2016.....	18
Acts of worship in schools, 2016	18
Figure 13: Frequency with which members of church ministry teams led acts of worship in schools, 2016	18
Confirmations, 2016.....	19
Visitors to churches, 2016.....	19
Figure 14: How often churches were open to visitors outside of service times, 2016.....	19
Appendix.....	20
Notes.....	20
Table 3: Diocesan summary statistics, 2016	21
Table 4: Diocesan Worshipping Community, 2014-2016	22
Figure 15: Diocesan Worshipping Community age distribution, 2016.....	22
Table 5: Diocesan average all age weekly attendance, all age Sunday attendance, and all age school service attendance, 2011-2016	23
Table 6: Diocesan average adult weekly attendance, adult Sunday attendance, and adult school service attendance, 2011-2016.....	24
Table 7: Diocesan average child weekly attendance, child Sunday attendance, and child school service attendance, 2011-2016	25
Table 8: Diocesan average adult weekly attendance plus average child Sunday attendance, 2011-2016.....	26
Table 9: Diocesan adult and child Usual Sunday attendance, 2011-2016.....	27
Table 10: Diocesan electoral roll, 2016.....	28
Table 11: Diocesan Easter communicants and attendance, 2011-2016	29
Table 12: Diocesan Christmas communicants and attendance, 2011-2016.....	30

Table 13: Diocesan participation as a percentage of diocesan population and as a percentage of diocesan Christian population, 2016	31
Table 14: Diocesan baptisms and thanksgivings, 2011-2016	32
Table 15: Diocesan marriages and services of prayer and dedication after civil marriages, 2011-2016	33
Table 16: Diocesan funeral services held in church and at crematoria/cemeteries, 2011-2016	34
Table 17: Diocesan infant baptisms and funerals as a percentage of births and deaths, 2016.....	35
Table 18: Diocesan confirmations by gender, 2016.....	36
Figure 16: Age distribution of confirmations, 2006 and 2016.....	36
Diocesan summary of participation, 2006-2016.....	37
Methodology.....	43
Reference map of dioceses, 2016.....	47
Statistics for Mission form, 2016.....	48

Acknowledgements

The attempt to collect data from every church in the Church of England is ambitious and time-consuming. The data were provided by incumbents, church wardens, Parochial Church Council members, and other church staff and volunteers, whom we thank for the time and effort they have taken to report accurate figures. The efforts and energy of a large number of staff in diocesan offices have also been crucial. It has been a pleasure for us in the Research and Statistics unit to have forged closer links with a large number of dioceses during the preparation of this report, and we look forward to strengthening these links in the future. We would like to thank all those who have taken part and assisted in other ways in facilitating Statistics for Mission for their time and commitment.

Statistics for Mission: measuring Church of England attendance and participation

The annual collection of Statistics for Mission measures key aspects of participation throughout the Church of England. Almost 16,000 churches in the Church of England were asked to complete a Statistics for Mission return in 2016. Churches were asked to report, among other things, the size of their Worshipping Community, attendance at Sunday and midweek services, attendance at Easter and Christmas, and the numbers of baptisms, marriages, and funerals they carried out during the year. Complete data were received from 88% of churches; where data were missing, values were estimated where possible, based on trends from previous years.

In the following sections, figures have been aggregated to give totals for the Church of England. Further information and detailed diocesan-level figures can be found in the tables in the Appendix. Methodological details and a copy of the 2016 Statistics for Mission form can be found at the end of this report. Values in the data tables are reported to the nearest 100 or nearest 10, as appropriate. Percentages are reported to the nearest 1% or 0.1%, as appropriate. In accordance with standard practice, totals, percentages, and averages have been calculated before rounding, so row and column totals may not always agree with the sums of the stated amounts.

Church of England attendance, 2016

Statistics for Mission offers several measures of attendance: attendance over the first 4 weeks of October (during the annual “October count”), from which average weekly and average Sunday attendance figures are derived; attendance on a usual Sunday (not a major festival or contained in a peak holiday period); and attendance at the great festivals of Easter and Christmas. Since 2012, churches have been asked to record their Worshipping Community – those people who attend church regularly (for example once a month or more), or would do so if not prevented by illness or temporary absence.

Keeping track of a church’s Worshipping Community is considerably more challenging than counting attendance at services, and not all churches are able to offer precise numbers. The accuracy of the data has improved as the concept has become more embedded as an aid to providing good pastoral care; this is an ongoing process, and therefore changes in a church’s Worshipping Community from year to year may reflect changes in record keeping rather than changes in worshippers. Thus, although the Worshipping Community is developing into an important measure of the number of regular Church of England worshippers, it has not been collected reliably for long enough to offer robust information about trends in church participation.

Throughout this report, average weekly attendance, derived from the October count, includes attendance at Sunday and midweek church services and fresh expressions of Church, but not attendance at services for schools. Average Sunday attendance likewise does not include attendance at services for schools.

These different measures are useful in different ways: the Worshipping Community includes all regular worshippers, whether they come on a Sunday or during the week, and whether they come to church every day or just once a month; the October count includes Sunday and midweek attendance during 4 specific weeks at all church services, fresh expressions of Church, and (since 2013) services for schools held in churches; the Usual Sunday figure asks about “normal” attendance, and is therefore less subject to year-to-year variation resulting from special events; Easter and Christmas attendance figures offer an insight into the number of people who are still in contact with their church but not necessarily regular worshippers.

None of these measures tells the whole story of the life of a church. Each offers insight into different aspects of church participation, and it would be wise to resist the temptation to focus on one single measure to the exclusion of others. Although the measures are highly correlated, there are individual churches where one or other measure is misleading.

There are many other valuable and important activities in which churches are involved that are not quantified every year through the Statistics for Mission return. Some of these are asked about in a “one off” question that changes from year to year. In 2016 this question asked about visitors to churches; the question in 2017 will ask about churches’ social action and community involvement.

The total Worshipping Community of churches across the Church of England in 2016 was 1,139,000 people, of whom 20% were aged under 18, 49% were aged 18-69, and 31% were aged 70 or over.

On average, 927,000 people (86% adults, 14% children under 16) attended church services or fresh expressions of Church each week in October 2016. A further 179,000 people attended services for schools in churches each week. Usual Sunday attendance at church in 2016 was 739,000 people (86% adults, 14% children under 16).

There were 1,048,000 members of Church of England electoral rolls in 2016.

1,223,000 people attended church at Easter 2016 (of whom 71% received communion). 2,580,000 people attended church at Christmas 2016 (of whom 34% received communion). During Advent in 2016, 2,490,000 people attended special services for the congregation and local community, and 2,849,000 attended special services for civic organisations and schools.

Church of England baptisms, marriages, and funerals, 2016

There were 111,500 baptisms and 4,800 services of thanksgiving for the gift of a child in Church of England churches during 2016. 59% of baptisms were of infants (aged under 1); 32% were of children (aged 1-12) and 9% were of people aged 13 and over. 68% of thanksgivings were for infants. There was an infant baptism for 10% of live births (and other births are likely to be followed by later child or mature baptisms).

There were 42,700 marriages and 2,800 services of prayer and dedication after civil marriages in Church of England churches during 2016. In 2014, the last year for which national statistics are available, 20% of marriages in England and Wales took place in or were followed by a service of prayer and dedication in a Church of England church.

There were 138,900 Church of England led funerals during 2016, of which 79,400 were funerals in Church of England churches, and a further 59,500 were funerals conducted on behalf of Church of England churches by members of church/parish ministry teams at crematoria/cemeteries. This figure omits some crematorium/cemetery funerals conducted by clergy in non-parochial ministry. Church of England parishes conducted funerals for 28% of deaths.

Church-level attendance and participation, 2016

There is a wide range of churches within the Church of England, serving communities large and small. Table 1 summarises the range of attendance and participation across the Church of England's churches. The table shows the reported participation at the smallest 5% and 25% of churches, the median (i.e. middle) church, the largest 25% and 5% of churches, and the mean (average) church. A few large churches can result in a large mean value that is not a helpful summary of the data; the median is often a more useful number to consider when thinking about a "typical" church.

Table 1: Church participation summary, 2016

	smallest 5% of churches	smallest 25% of churches	median (middle) church	largest 25% of churches	largest 5% of churches	mean (average) church
Worshipping Community	9	20	44	92	236	74.9
All age average weekly attendance	3	13	35	81	199	62.6
Adult average weekly attendance	3	12	31	69	165	53.6
Child average weekly attendance	0	0	3	11	35	9.0
All age Usual Sunday attendance	7	15	28	60	150	49.1
Easter attendance	0	25	51	102	242	82.2
Christmas attendance	0	36	89	210	602	176.7
Baptisms and thanksgivings	0	1	4	10	30	7.8
Marriages and services of prayer & dedication	0	0	2	4	11	3.0
Funerals in churches, crematoria, & cemeteries	0	2	5	12	33	9.3

The median (middle) church had a Worshipping Community of 44 people. It had 35 people attending worship in an average week in October, the majority being adults. 28 people attended on a usual Sunday. 51 people attended at Easter and 89 attended at Christmas. It carried out 4 baptisms, 2 marriages, and 5 funerals in 2016.

Because some churches are significantly larger, the mean (average) church was larger than the median church: it had a Worshipping Community of 75 people. It had 63 people attending worship each week in October, and 49 on a usual Sunday. It had 82 people attending at Easter and 177 at Christmas. It carried out 8 baptisms, 3 marriages, and 9 funerals in 2016.

The largest 5% of churches had 236 or more people in their Worshipping Communities, whereas the smallest 5% of churches had 9 or fewer.

It should be noted that, particularly in parishes that contain several churches, not all churches had services at Easter or Christmas, which explains why a proportion of churches reported zero attendance on these occasions.

Note: Values in Table 1 are based on 10,552 complete single-church returns. Average weekly attendance figures include attendance at Sunday and midweek church services and fresh expressions of Church, but not attendance at services for schools.

Church of England attendance per capita, 2016

The Church of England's Worshipping Community was 2.0% of the population in 2016. The overall attendance in an average week in October 2016 was 1.7% of the population, rising to 4.6% of the population at Christmas. There was significant variation in total attendance from diocese to diocese, which is unsurprising given the differences in size and number of churches. Differences in attendance between dioceses remain when considering attendance as a percentage of the population, or as a percentage of the population whose religious affiliation is Christian.

Worshipping Community joiners and leavers, 2016

As well as being asked about the size and age distribution of their Worshipping Community, each church is asked about the number of people who join and leave their Worshipping Community during the year and, where known, their reason for joining/leaving.

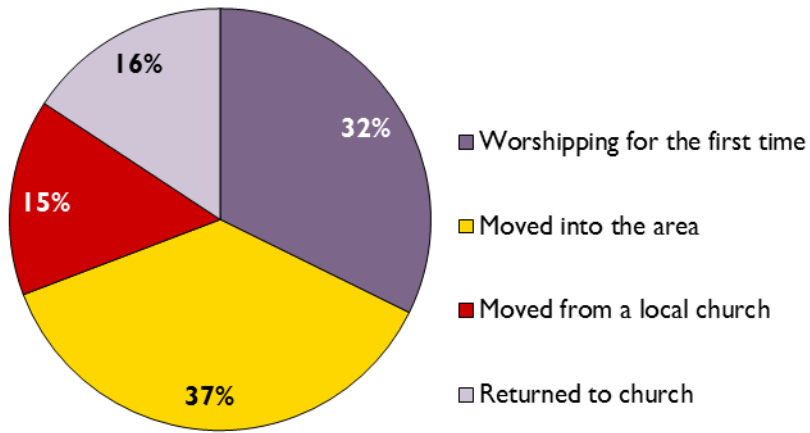
In 2016, Church of England churches reported 81,000 people joining their Worshipping Communities, 31% of them being children. 32% of adult joiners were worshipping for the first time, and 37% had moved to the area. 58% of child joiners were first-time worshippers.

Church of England churches reported 59,000 people leaving their Worshipping Communities, 19% of them being children. 43% of adult leavers left through death or illness, and 31% had moved away. 41% of child leavers had moved away, with 37% not worshipping anywhere.

Reasons for joining/leaving a Worshipping Community are not necessarily known by the church. Figures 1a-1d show the reasons for joining/leaving as reported by churches. Reasons for joining/leaving were given for 90% of reported joiners and leavers.

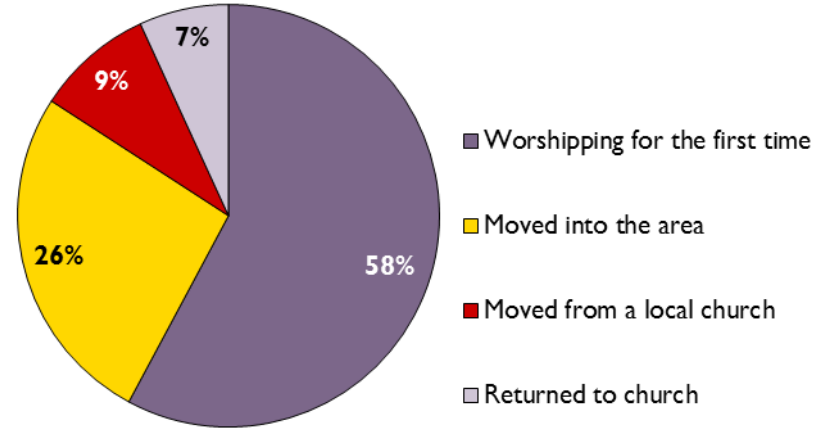
Although the reported total Worshipping Community changed little from 2015 to 2016, churches reported 23,000 more people joining than leaving their Worshipping Communities over the course of the year. As well as suggesting that joiners are more noticeable than leavers, this illustrates the record-keeping challenge that the Worshipping Community presents.

Figure 1a: Adult Worshipping Community joiners, 2016



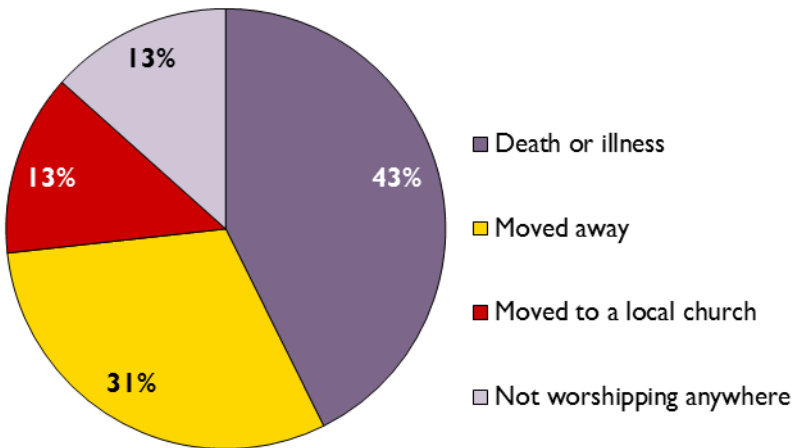
Information available from 49,500 of the reported 56,300 adult joiners

Figure 1b: Child Worshipping Community joiners, 2016



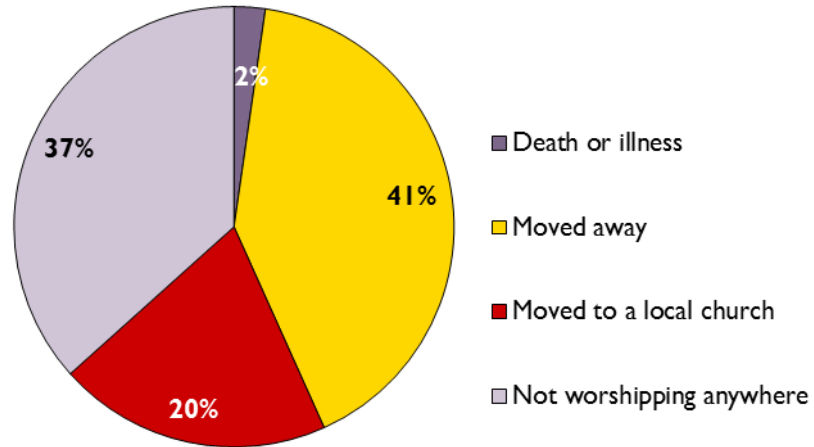
Information available from 22,000 of the reported 25,100 child joiners

Figure 1c: Adult Worshipping Community leavers, 2016



Information available from 44,700 of the reported 47,700 adult leavers

Figure 1d: Child Worshipping Community leavers, 2016



Information available from 9,600 of the reported 10,900 child leavers

Trends in Church of England participation, 2006-2016

Church of England attendance figures have been collected for many years, enabling trends in attendance to be assessed. Attendance figures in any one year may be affected by unusual events such as special anniversaries, visits by the Bishop, retirements, or floods. Given the large number of churches included in Statistics for Mission, there are likely to be many special events in any given year. It is therefore not sensible to consider changes in attendance from one year to the next in isolation; a more reliable assessment of trends can be made by looking at the figures over a longer period of time.

Here, we consider attendance figures from 2006 to 2016. Over this period most key Statistics for Mission questions have been predominantly unchanged. The exception is the October count: in 2013, an additional section was added asking about attendance at services for schools taking place in churches; prior to this, some churches had reported school service attendance (predominantly as midweek Child attendance) whereas others had not. Therefore, when using the October count figures to assess trends, it would be inadvisable to use All Age average weekly attendance. Instead we use Adult average weekly attendance plus Child average Sunday attendance (both derived from the October count data, and in both cases including attendance at church and fresh expressions of Church, but not including attendance at services for schools) since these are likely to be relatively unaffected by the change in the question.

As seen in Figures 2-5, attendance, however it is measured, gradually decreased between 2006 and 2016. The inclusion of attendance at services for schools in the October count from 2013 onwards demonstrates a substantial ministry with schools, amounting to 137,600 children and 41,700 adults each week in October 2016. However, the Usual Sunday attendance figures show a decline in children as a fraction of Sunday congregations (from over 15% in 2006 to under 14% in 2016). Reported attendance at services for schools has increased from 2013 onwards, though it is possible that this is more to do with better reporting of attendance at such services rather than a genuine increase. A large number of school Harvest Festivals take place in October, so it is likely that this month contains more school services than most times of the year, aside from Christmas and Easter, and therefore it would be a mistake to assume that this level of attendance at services for schools occurs every week throughout the year.

Attendance at Easter and Christmas has also fallen, though the pattern of decline is less clear cut: factors such as the weather, the day of the week (for Christmas) the time of year (for Easter) may well have an impact on attendance.

Questions about the Worshipping Community have not been included for long enough to reliably assess how the sizes of Worshipping Communities are changing over time. It is clear from the comments noted on Statistics for Mission returns that churches are still developing their understanding about which people are part of their Worshipping Communities. With these caveats in mind, it is interesting to note that the total Church of England Worshipping Community remained almost unchanged from 2014-2016. When set alongside the observed decline in attendance, this suggests the possibility that the number of individual people attending churches has not fallen, but that people attend less frequently; however, without detailed surveys of individual members of congregations, it is not possible to draw firm conclusions.

As shown in Figures 6-9, similar patterns are seen with baptisms, marriages, and funerals. All have declined since 2006, most evidently in the case of funerals. While the number of baptisms was reasonably stable between 2006 and 2011, there has been a more noticeable fall in the past few years.

Figure 2: Average weekly attendance (October count), 2006-2016

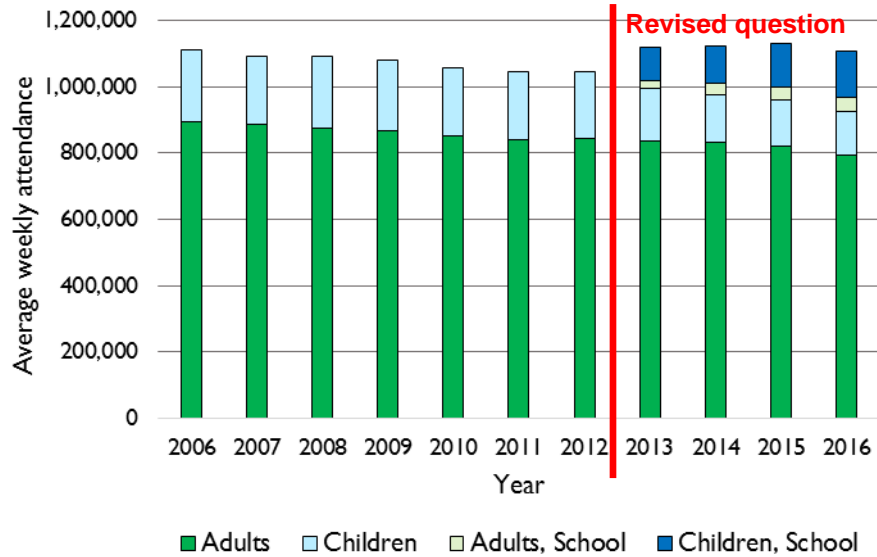


Figure 3: Usual Sunday attendance, 2006-2016

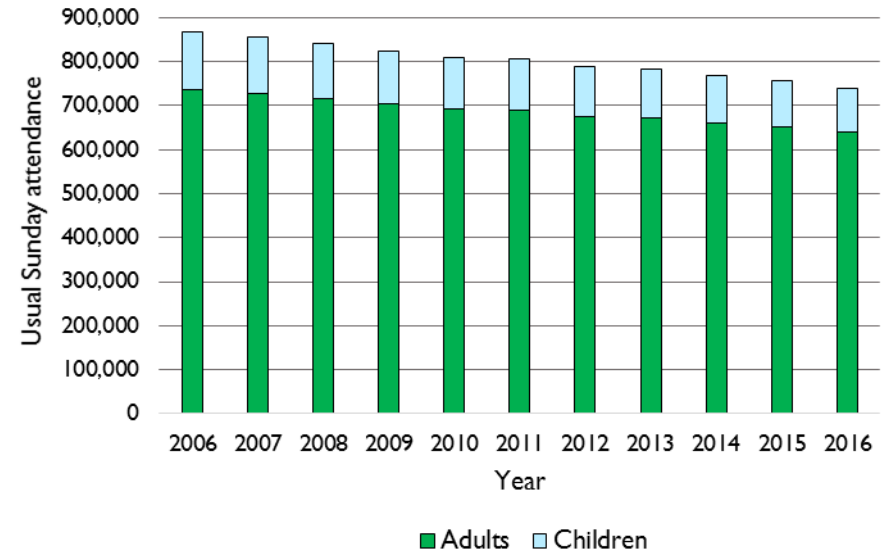


Figure 4: Easter communicants and attendance, 2006-2016

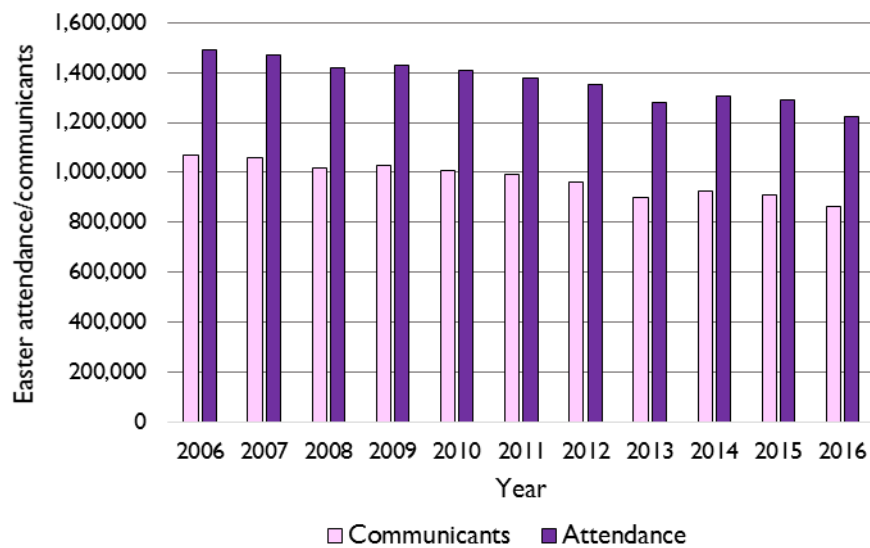


Figure 5: Christmas communicants and attendance, 2006-2016

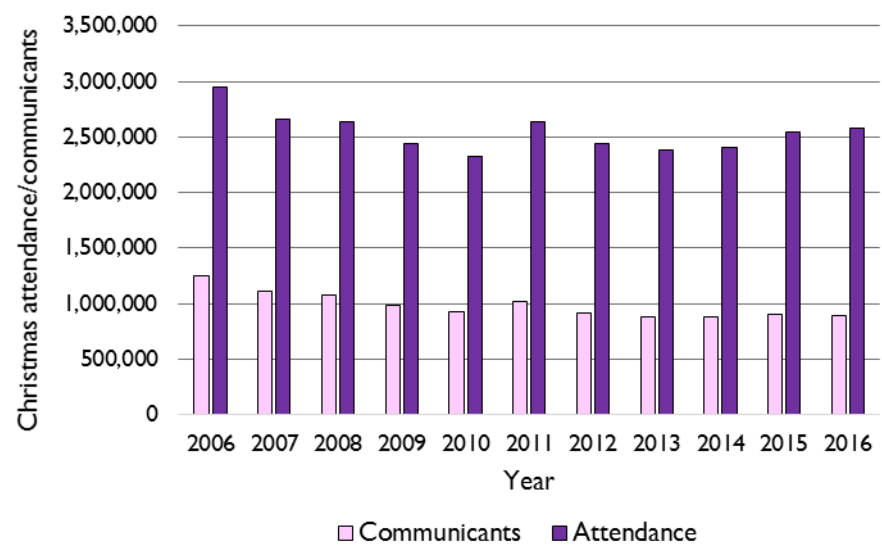


Figure 6: Baptisms and thanksgivings, 2006-2016

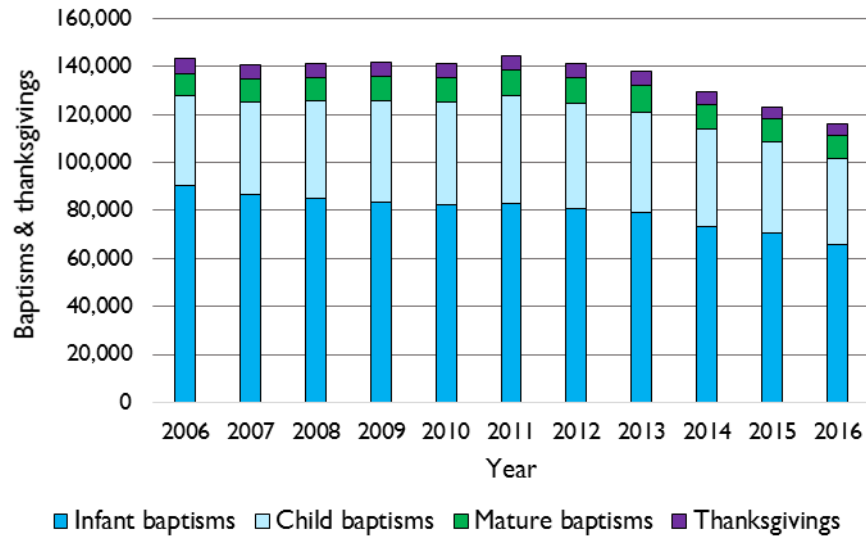


Figure 7: Marriages and services of prayer and dedication, 2006-2016



Figure 8: Funerals, 2006-2016

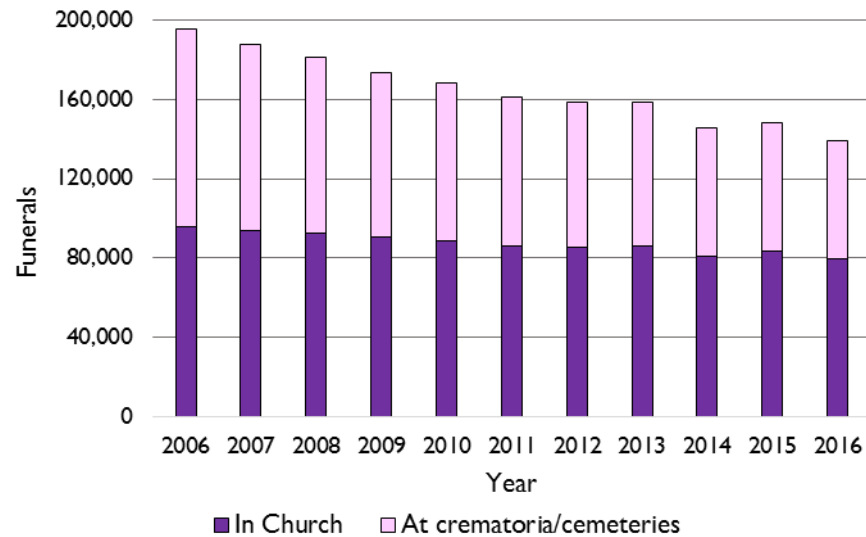
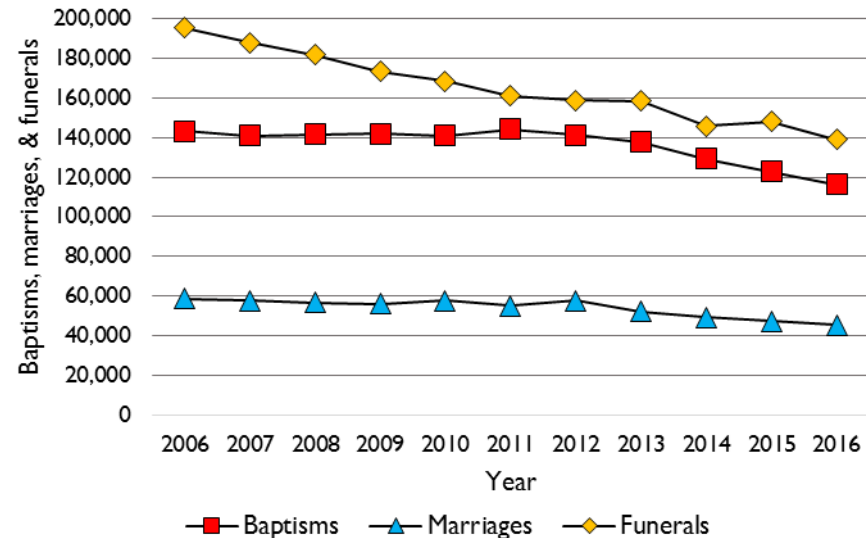


Figure 9: Baptisms, marriages, and funerals, 2006-2016



Numbers of Church of England baptisms, marriages, and funerals depend on absolute numbers of births, marriages, and deaths. Official statistics have been used to estimate the number of births and deaths taking place within each diocese of the Church of England (not including the Diocese in Europe); marriage statistics are not available at the same spatial resolution, so aggregate official figures for England and Wales, only available up until 2014, are used. In 2006, there was an infant baptism for 15% of live births (and other births will have been followed by later child or mature baptisms); 24% of marriages in England and Wales took place in or were followed by a service of prayer and dedication in a Church of England church; Church of England parishes conducted funerals for 41% of deaths. In 2016, there was an infant baptism for 10% of live births (and other births are likely to be followed by later child or mature baptisms); Church of England parishes conducted funerals for 28% of deaths. In 2014, the last year for which national statistics are available, 20% of marriages in England and Wales took place in or were followed by a service of prayer and dedication in a Church of England church.

Large variations between dioceses are illustrated by the fact that in 2016 there was an infant baptism for over 25% of live births in Hereford and Carlisle but for under 5% of live births in London and Southwark. There was a Church of England funeral for over 45% of deaths in Hereford, Sodor & Man, and Gloucester but for under 20% of deaths in London. Summaries of trends in attendance and coverage of infant baptisms, marriages, and funerals are shown in Figures 10 and 11.

Figure 10: Church of England attendance summary, 2006-2016

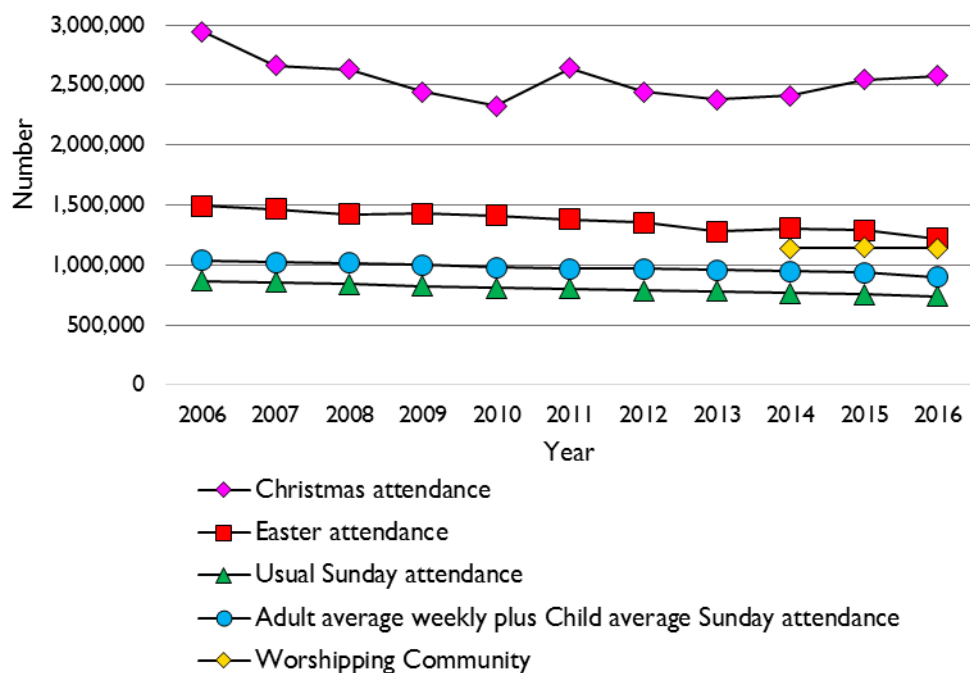


Figure 11: Church of England infant baptisms, marriages, and funerals as a percentage of all births, marriages, and deaths, 2006-2016

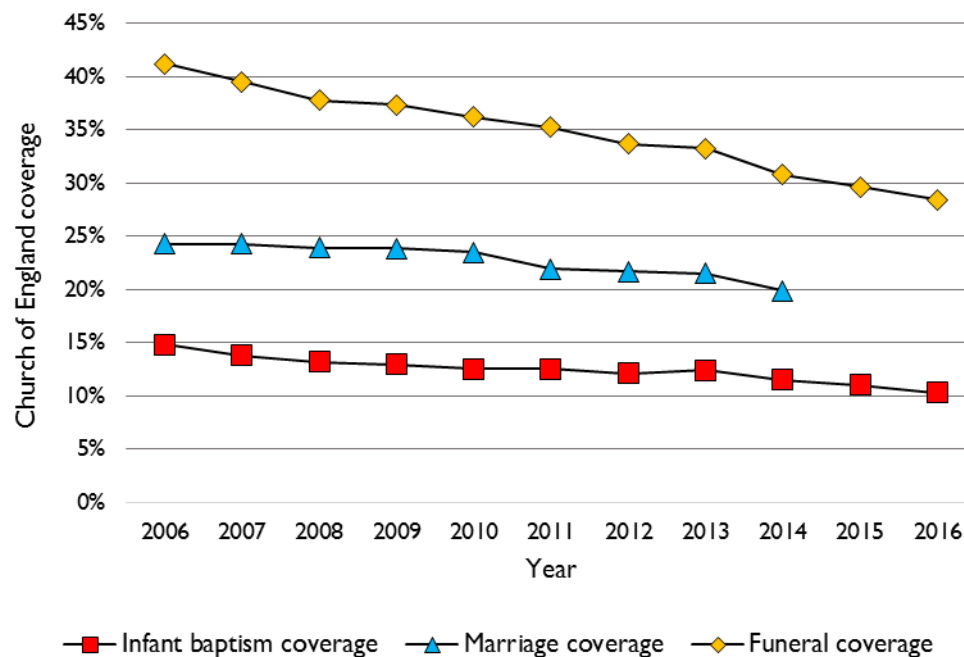


Table 2: Church of England attendance and participation trends, 2006-2016

Over the past decade, overall attendance has fallen by between 10% and 15%, depending on the measure used (Table 2).

Adult attendance has fallen by less than Child attendance. Weekly attendance (which includes both midweek and Sunday attendance) has fallen by less than Sunday attendance, suggesting that there may have been a trend over the past decade for more worship to take place on days other than Sundays.

The numbers of baptisms, marriages, and funerals have fallen, with the largest fall being in funerals at crematoria/cemeteries.

These simple assessments of trend are based on fitting a straight line through the available data. A straight line is a good approximation for most measures (apart from Christmas attendance, which has fluctuated more than other measures). The decline in numbers of baptisms and marriages appears to have increased over recent years.

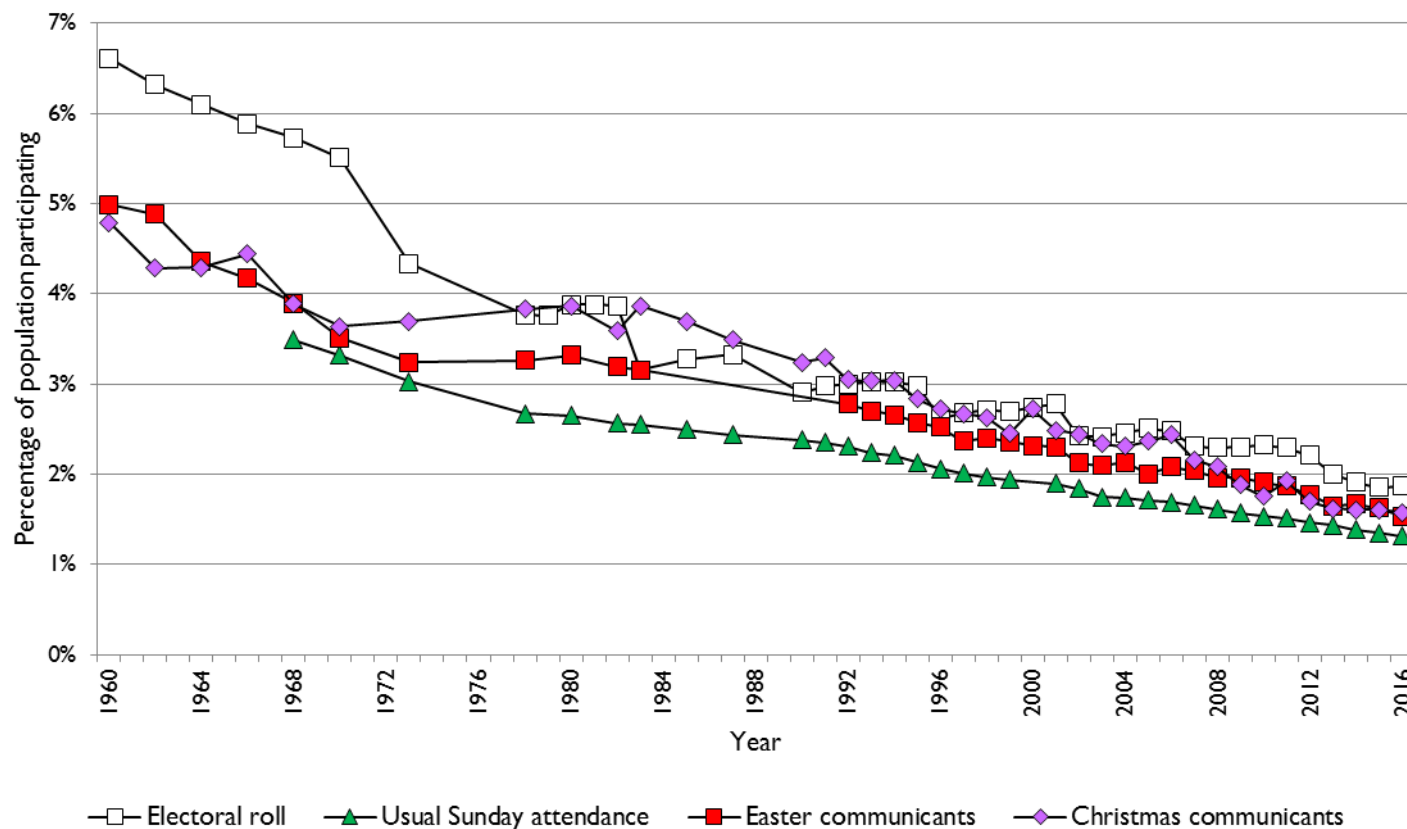
Measure of Church of England participation	Change from 2006 to 2016	Correlation coefficient*
Adult average weekly+Child average Sunday attendance	-12%	0.96
Adult average weekly attendance	-10%	0.96
Adult average Sunday attendance	-13%	0.97
Child average Sunday attendance	-22%	0.96
All age average Sunday attendance	-15%	0.97
All age Usual Sunday attendance	-14%	0.99
Adult Usual Sunday attendance	-13%	0.99
Child Usual Sunday attendance	-23%	0.98
Easter attendance	-17%	0.95
Easter communicants	-19%	0.94
Christmas attendance	-10%	0.26
Christmas communicants	-28%	0.76
Baptisms and thanksgivings	-15%	0.66
Marriages and services of prayer & dedication	-21%	0.79
Funerals total	-28%	0.97
Funerals in church	-16%	0.94
Funerals in crematoria/cemeteries	-39%	0.98

* The correlation coefficient shows how closely the various measures of attendance and participation follow a straight line, with 1 indicating a perfect fit and 0 indicating no linear relationship.

Church of England attendance and participation trends should be viewed in a longer historical context where possible.

Figures for Usual Sunday attendance, Electoral roll, and Easter & Christmas communicants have been collected reasonably consistently for many years. The trend over the past decade is consistent with what has been happening for the past half century (Figure 12).

Figure 12: Church of England participation summary, 1960-2016



Parish-level trends, 2006-2016

Although the overall pattern of Church of England attendance and participation is one of steady gradual decline, this masks the differences in experience in individual parishes over the past 10 years.

- Based on parish-level all age Usual Sunday attendance from 2006-2016, 11% of parishes have experienced statistically significant growth; 38% have experienced statistically significant decline; in 52% there has been no statistically significant trend.
- Based on parish-level Adult average weekly attendance plus Child average Sunday attendance from 2006-2016, 7% of parishes have experienced statistically significant growth; 24% have experienced statistically significant decline; in 69% there has been no statistically significant trend.

It should be noted that collectively some of those parishes in which there is no statistically significant trend have contributed to the overall decline.

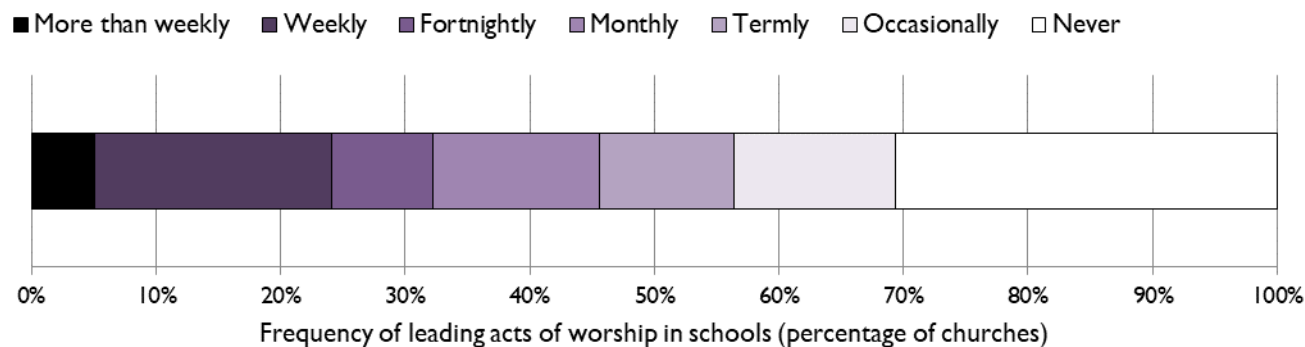
The difference in the figures when using the two different measures of attendance is unsurprising - as already noted, within a single church the October count figures vary more than the Usual Sunday figures from year to year and these fluctuations may swamp trends in attendance.

Statistics for Mission does not attempt to collect information about all the various aspects of churches that may correlate with growth or decline; additional detailed data would be required in order to draw conclusions about the factors that are associated with church growth.

Acts of worship in schools, 2016

Many churches are involved in leading acts of worship in schools, for example during school assemblies (Figure 13). 46% of responding churches reported that a member of their church ministry team led an act of worship in schools once a month or more during 2016.

Figure 13: Frequency with which members of church ministry teams led acts of worship in schools, 2016



Note: Figure 13 is based on 12,913 responses. Figure 13 is a corrected version of that originally published, in which the categories “More than weekly”, “Weekly”, and “Fortnightly” were mislabelled.

Confirmations, 2016

15,900 people were confirmed in 2016, at over 1,900 confirmation services. 59% of those confirmed were female. 24% of those confirmed were aged under 12, while 45% were aged 20 or over.

Visitors to churches, 2016

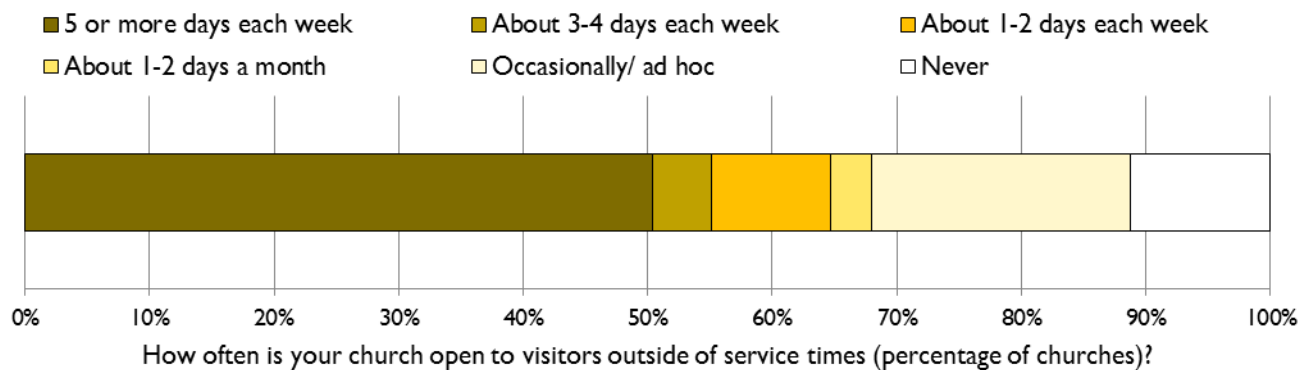
A one-off section in Statistics for Mission 2016 asked about visitors to churches. Churches were asked about people who came for reasons other than attending services or particular groups or activities (reasons for visiting include coming to see the building and/or its artefacts; private prayer or reflection).

The majority of churches were open to visitors outside of service times (Figure 14). Over 50% of churches reported being open to visitors 5 or more days each week.

Of churches that were open to visitors outside of service time, 50% reported being open for 42 or more hours each week.

Not all churches were able to estimate the number of visitors; church buildings are often unlocked but not staffed, so visitors are not counted. 4,341 churches reported their estimated number of visitors. Of these, 50% had 6 or fewer visitors each week. However, 9% of churches that responded reported having 100 or more visitors each week; 2% of churches reported having 500 or more visitors each week.

Figure 14: How often churches were open to visitors outside of service times, 2016



Note: Figure 14 is based on 12,926 responses.

Appendix

This section contains additional detail, including diocesan-level figures. Values in the data tables are reported to the nearest 100 or nearest 10, as appropriate. Percentages are reported to the nearest 1% or 0.1%, as appropriate. In accordance with standard practice, totals, percentages, and averages have been calculated before rounding, so row and column totals may not always agree with the sums of the stated amounts.

Data tables generally include figures from 2011-2016, to give an indication of recent trends. The main exception is for the Worshipping Community figures; although collected since 2012 these were of variable reliability for the first few years, so figures are shown from 2014 onwards. For Tables 5-7, which contain figures derived from the October count of attendance, it should be noted that the unusually large changes in attendance from 2012 to 2013 are the result of a change in the question, which from 2013 onwards specifically asked about attendance at services for schools. Attendance at midweek services for schools has been measured since 2013; attendance at services for schools on Sundays has been measured from 2014, with explicit guidance that only school services taking place in churches or church buildings should be included. Attendance at these school services is not included in the weekly attendance or Sunday attendance totals for 2013-2016. It is likely that reported attendance before 2013 included some school service attendance, accounting for the unusually large change from 2012 to 2013.

As a result of changes in the questions asked, the most suitable measure based on the October count for assessing trends is the Adult average weekly attendance plus the Child average Sunday attendance, shown in Table 8.

These tables are available electronically on the Research and Statistics web page: <https://www.churchofengland.org/about-us/facts-stats/research-statistics.aspx>

Notes

In the tables below, the completeness columns give the percentages of the 2016 values consisting of reports from churches/parishes (the remainder being estimated).

Figures for the Channel Islands are included in the Diocese of Canterbury, since episcopal oversight of the Channel Islands is being exercised by the Bishop of Dover. To allow meaningful assessment of trends, Channel Island figures are likewise included in the Diocese of Canterbury for previous years.

Table 3: Diocesan summary statistics, 2016

Ref. no.	Diocese	Province	Population	Area (square miles)	Population density (people per square mile)	Number of benefices	Number of parishes	Number of churches	Population per church	Rank	Square miles per church	Rank	Christian population	Christian population per church	Rank	Response rate	Rank
1	Bath & Wells	C	947,000	1,610	590	178	463	560	1,690	36	2.9	21	586,000	1,050	37	91%	23
2	Birmingham	C	1,564,000	290	5,330	140	151	184	8,500	2	1.6	37	796,000	4,320	3	97%	9
3	Blackburn	Y	1,341,000	930	1,450	177	237	272	4,930	12	3.4	13	898,000	3,300	8	75%	38
5	Bristol	C	1,019,000	470	2,160	106	166	202	5,050	10	2.3	35	549,000	2,720	13	89%	25
6	Canterbury	C	1,128,000	1,050	1,080	145	263	361	3,130	26	2.9	21	703,000	1,950	25	91%	16
7	Carlisle	Y	496,000	2,570	190	118	249	335	1,480	38	7.7	2	357,000	1,060	35	83%	31
8	Chelmsford	C	3,176,000	1,530	2,070	312	468	579	5,490	8	2.6	30	1,765,000	3,050	12	98%	8
9	Chester	Y	1,630,000	1,030	1,580	216	268	343	4,750	13	3.0	17	1,112,000	3,240	9	67%	41
10	Chichester	C	1,680,000	1,450	1,160	275	362	481	3,490	20	3.0	17	973,000	2,020	23	92%	12
11	Coventry	C	867,000	700	1,240	122	203	242	3,580	19	2.9	21	518,000	2,140	20	99%	4
12	Derby	C	1,050,000	990	1,060	148	254	317	3,310	23	3.1	15	640,000	2,020	23	88%	29
13	Durham	Y	1,484,000	980	1,520	176	212	268	5,540	7	3.7	11	1,039,000	3,880	5	94%	10
14	Ely	C	764,000	1,530	500	161	309	332	2,300	30	4.6	4	448,000	1,350	30	91%	18
15	Exeter	C	1,177,000	2,570	460	160	491	603	1,950	32	4.3	7	716,000	1,190	31	90%	24
16	Gloucester	C	663,000	1,130	590	94	301	385	1,720	34	2.9	21	420,000	1,090	33	91%	21
17	Guildford	C	1,052,000	530	1,980	139	162	212	4,960	11	2.5	32	654,000	3,080	11	98%	5
18	Hereford	C	326,000	1,650	200	86	340	403	810	41	4.1	10	220,000	550	40	98%	7
19	Leicester	C	1,037,000	830	1,250	106	243	314	3,300	24	2.6	30	528,000	1,680	27	92%	13
20	Lichfield	C	2,141,000	1,730	1,240	250	427	562	3,810	17	3.1	15	1,354,000	2,410	17	92%	14
21	Lincoln	C	1,071,000	2,670	400	190	492	627	1,710	35	4.3	7	717,000	1,140	32	86%	30
22	Liverpool	Y	1,596,000	390	4,050	135	199	241	6,620	5	1.6	37	1,199,000	4,980	1	88%	28
23	London	C	4,299,000	280	15,570	408	398	492	8,740	1	0.6	41	1,871,000	3,800	6	91%	22
24	Manchester	Y	2,153,000	420	5,190	181	257	314	6,860	4	1.3	39	1,284,000	4,090	4	89%	26
25	Newcastle	Y	818,000	2,100	390	129	170	237	3,450	21	8.9	1	515,000	2,170	18	92%	15
26	Norwich	C	905,000	1,800	500	176	555	639	1,420	39	2.8	26	548,000	860	38	80%	34
27	Oxford	C	2,375,000	2,210	1,070	289	612	815	2,910	27	2.7	28	1,375,000	1,690	26	82%	33
28	Peterborough	C	910,000	1,140	800	128	349	381	2,390	29	3.0	17	543,000	1,430	29	80%	35
29	Portsmouth	C	784,000	420	1,870	125	140	170	4,610	15	2.5	32	461,000	2,710	14	100%	1
31	Rochester	C	1,351,000	540	2,520	184	216	261	5,180	9	2.1	36	827,000	3,170	10	70%	40
32	St. Albans	C	1,917,000	1,120	1,720	193	338	408	4,700	14	2.7	28	1,096,000	2,690	15	91%	17
33	St. Edms & Ipswich	C	668,000	1,430	470	125	445	479	1,390	40	3.0	17	407,000	850	39	91%	20
34	Salisbury	C	948,000	2,050	460	138	442	570	1,660	37	3.6	12	602,000	1,060	35	82%	32
35	Sheffield	Y	1,287,000	610	2,100	149	175	213	6,040	6	2.9	21	776,000	3,640	7	89%	27
36	Sodor & Man	Y	88,000	220	400	14	15	40	2,210	31	5.5	3	-	-	-	100%	1
37	Southwark	C	2,852,000	320	8,870	256	293	356	8,010	3	0.9	40	1,569,000	4,410	2	77%	36
38	Southwell & Nottingham	Y	1,140,000	840	1,350	146	244	300	3,800	18	2.8	26	644,000	2,150	19	93%	11
39	Truro	C	557,000	1,390	400	113	217	306	1,820	33	4.5	5	333,000	1,090	33	72%	39
41	Winchester	C	1,233,000	1,130	1,090	141	255	357	3,450	21	3.2	14	742,000	2,080	22	98%	6
42	Worcester	C	883,000	670	1,320	94	169	276	3,200	25	2.4	34	585,000	2,120	21	100%	3
43	York	Y	1,438,000	2,670	540	245	447	588	2,450	28	4.5	5	927,000	1,580	28	76%	37
46	Leeds	Y	2,723,000	2,630	1,040	304	462	613	4,440	16	4.3	7	1,547,000	2,520	16	91%	19
	Church of England		55,538,000	50,630	1,100	6,972	12,459	15,638	3,550		3.2		32,848,000	2,100		88%	

Notes: Benefice, Parish, and Church numbers are as listed in the Parish Register maintained by the Research and Statistics unit as at 6th September 2017.

Here and elsewhere, the Province in which a diocese falls is denoted as C (Canterbury) or Y (York).

Cathedral churches are included within the count of churches.

Populations are calculated using mid-year 2016 population estimates from the ONS, mapped onto diocesan boundaries. Figures for the Diocese in Europe are not included in Table 3.

Christian population is calculated using data from the 2011 census. The total for the Christian population of the Church of England does not include the Isle of Man.

Response rate is the percentage of churches for which a complete 2016 Statistics for Mission return (i.e. one that did not require any estimation) was received.

Table 4: Diocesan Worshipping Community, 2014-2016

Ref. no.	Diocese	Province	Worshipping Community				Age distribution, 2016		
			2014	2015	2016	completeness, 2016	Ages 0-17	Ages 18-69	Ages 70 & over
1	Bath & Wells	C	26,700	26,600	26,000	90%	14%	43%	43%
2	Birmingham	C	19,800	20,600	21,200	96%	21%	52%	27%
3	Blackburn	Y	26,700	26,700	26,200	73%	21%	48%	31%
5	Bristol	C	18,000	18,100	18,000	87%	21%	51%	29%
6	Canterbury	C	26,800	26,400	26,600	78%	18%	49%	33%
7	Carlisle	Y	14,800	14,200	14,100	82%	14%	41%	45%
8	Chelmsford	C	45,600	44,300	44,100	94%	20%	52%	28%
9	Chester	Y	36,200	36,800	37,600	69%	20%	48%	32%
10	Chichester	C	45,900	46,600	48,200	88%	20%	48%	32%
11	Coventry	C	18,000	17,500	17,400	97%	19%	47%	33%
12	Derby	C	18,300	18,100	17,900	91%	17%	47%	36%
13	Durham	Y	19,400	19,500	19,600	93%	18%	44%	38%
14	Ely	C	21,800	22,100	22,000	95%	23%	50%	27%
15	Exeter	C	25,500	25,500	25,700	88%	13%	44%	43%
16	Gloucester	C	23,200	23,000	23,300	91%	20%	47%	33%
17	Guildford	C	32,900	32,700	31,800	92%	21%	54%	25%
18	Hereford	C	11,700	12,300	12,800	89%	14%	40%	46%
19	Leicester	C	19,200	19,300	18,200	94%	20%	48%	32%
20	Lichfield	C	45,600	44,700	44,400	90%	19%	48%	33%
21	Lincoln	C	18,800	19,300	18,700	90%	13%	45%	42%
22	Liverpool	Y	27,200	26,600	25,200	85%	24%	46%	30%
23	London	C	90,100	88,200	89,400	89%	23%	64%	13%
24	Manchester	Y	29,200	29,600	28,400	86%	27%	47%	26%
25	Newcastle	Y	14,700	14,600	14,200	91%	16%	47%	37%
26	Norwich	C	21,200	21,700	22,600	74%	13%	42%	44%
27	Oxford	C	64,100	67,100	64,800	83%	22%	51%	27%
28	Peterborough	C	20,700	21,600	22,000	82%	23%	46%	32%
29	Portsmouth	C	15,200	14,900	15,400	93%	16%	46%	38%
31	Rochester	C	29,800	29,500	31,100	65%	22%	50%	27%
32	St. Albans	C	37,300	36,800	34,300	86%	22%	49%	29%
33	St. Edms & Ipswich	C	19,100	19,100	17,800	90%	16%	44%	40%
34	Salisbury	C	31,300	30,200	31,200	86%	15%	46%	39%
35	Sheffield	Y	18,100	19,000	19,500	81%	21%	49%	30%
36	Sodor & Man	Y	1,900	1,900	1,800	100%	17%	44%	39%
37	Southwark	C	49,600	50,900	52,200	77%	27%	54%	18%
38	Southwell & Nottingham	Y	19,100	19,800	18,700	91%	18%	50%	33%
39	Truro	C	12,100	12,400	11,500	75%	11%	39%	50%
41	Winchester	C	27,300	27,700	26,800	91%	19%	46%	35%
42	Worcester	C	14,000	13,500	13,600	94%	14%	42%	43%
43	York	Y	29,700	29,300	28,800	74%	17%	47%	37%
44	Europe	C	14,900	15,700	16,200	91%	18%	60%	22%
46	Leeds	Y	40,200	40,800	39,300	92%	20%	45%	35%
Church of England			1,141,700	1,145,500	1,138,800	86%	20%	49%	31%

Figure 15: Diocesan Worshipping Community age distribution, 2016



Information about the age structure of Worshipping Communities allows us to identify dioceses with a large proportion of children in their congregations (e.g. Manchester and Southwark) as well as those whose churches serve an older population (e.g. Truro and Hereford).

Although the age groups are broad, this is the most comprehensive information available about the distribution of ages of people taking part in the worshipping life of the Church of England.

Table 5: Diocesan average all age weekly attendance, all age Sunday attendance, and all age school service attendance, 2011-2016

Ref. no.	Diocese	Province	All age average weekly attendance							All age average Sunday attendance							All age average weekly school service attendance			
			2011	2012	2013	2014	2015	2016	complete-ness, 2016	2011	2012	2013	2014	2015	2016	complete-ness, 2016	2013	2014	2015	2016
1	Bath & Wells	C	23,200	24,700	23,000	23,100	22,600	21,800	96%	19,700	21,100	19,900	19,800	19,300	18,500	96%	2,900	4,000	5,000	5,900
2	Birmingham	C	17,200	17,900	17,000	17,200	16,500	16,800	100%	14,400	14,900	15,000	15,000	14,300	14,600	100%	2,800	3,000	2,900	3,400
3	Blackburn	Y	27,200	27,100	26,700	25,900	25,000	23,800	77%	23,600	23,400	23,400	22,600	21,700	20,600	79%	2,400	2,500	2,800	3,400
5	Bristol	C	16,700	16,400	15,600	15,000	14,700	14,100	94%	14,000	13,500	13,200	12,800	12,500	11,900	95%	2,400	2,000	2,200	2,300
6	Canterbury	C	24,100	25,400	23,800	23,800	22,300	21,900	93%	19,600	20,300	20,000	19,900	18,300	18,100	92%	3,800	3,700	3,800	4,800
7	Carlisle	Y	14,900	14,900	14,200	13,500	13,100	12,600	88%	12,200	12,500	12,200	11,600	11,100	10,500	89%	2,600	1,700	2,900	2,000
8	Chelmsford	C	40,800	40,200	38,500	38,000	38,400	36,800	99%	34,500	34,600	34,100	33,800	33,300	31,600	99%	4,200	4,900	6,200	6,700
9	Chester	Y	36,300	35,900	33,600	33,400	33,200	32,600	70%	30,000	29,200	28,300	28,300	27,900	27,000	72%	3,900	4,000	3,500	3,400
10	Chichester	C	43,700	42,700	39,900	38,700	37,500	37,000	97%	35,000	35,700	33,800	33,100	31,900	31,000	97%	4,800	5,600	5,900	6,500
11	Coventry	C	15,300	15,600	16,200	15,600	15,000	14,800	100%	13,200	13,100	13,400	13,200	12,500	12,000	100%	1,800	3,300	3,500	2,800
12	Derby	C	17,300	17,400	15,500	15,800	16,200	15,200	94%	15,000	14,400	13,600	13,700	13,800	13,000	94%	2,700	3,600	3,800	3,700
13	Durham	Y	20,500	20,400	20,100	21,700	20,600	19,700	98%	16,000	15,900	16,100	17,000	16,200	15,300	98%	2,800	4,300	3,600	4,200
14	Ely	C	18,200	17,900	18,000	17,900	17,600	16,800	98%	15,400	15,100	15,600	15,300	14,700	14,200	98%	1,400	2,700	2,700	3,100
15	Exeter	C	25,100	24,000	23,000	22,700	23,100	23,300	96%	22,000	21,400	20,800	20,400	20,500	20,300	96%	1,800	3,900	4,100	4,100
16	Gloucester	C	19,900	19,900	18,100	18,600	18,800	17,900	95%	15,700	16,400	15,400	15,400	15,500	14,700	96%	1,800	3,200	4,500	5,000
17	Guildford	C	28,000	28,300	26,700	25,500	24,800	23,900	100%	23,500	23,900	23,500	22,300	21,800	20,600	100%	3,800	3,700	3,800	4,500
18	Hereford	C	10,200	10,100	10,000	9,600	9,700	9,900	100%	8,400	8,400	8,100	7,600	7,600	7,400	100%	1,100	1,200	2,300	2,400
19	Leicester	C	14,600	15,700	14,800	14,500	13,900	13,200	98%	12,500	12,900	12,700	12,300	11,700	10,900	98%	3,800	2,700	3,000	3,100
20	Lichfield	C	35,800	35,900	33,000	32,500	31,800	30,500	94%	27,100	27,800	27,700	27,100	26,300	25,200	95%	6,800	9,200	9,100	8,900
21	Lincoln	C	16,900	16,100	15,000	15,200	16,500	15,400	97%	13,600	13,300	12,200	12,400	13,400	12,400	97%	1,700	3,100	4,300	5,200
22	Liverpool	Y	28,700	28,200	26,300	24,900	24,700	23,300	92%	23,000	22,200	22,100	20,900	21,100	20,100	92%	4,700	3,600	4,100	3,800
23	London	C	76,100	81,800	76,200	73,300	72,800	70,600	98%	57,400	61,500	59,800	58,500	58,700	57,500	98%	5,800	10,300	11,600	10,500
24	Manchester	Y	33,200	32,200	30,400	27,800	27,200	27,200	100%	26,800	26,700	26,700	25,400	24,800	24,300	100%	4,400	2,900	4,800	5,400
25	Newcastle	Y	14,000	14,900	14,500	14,700	14,600	13,500	93%	11,500	11,700	12,000	11,900	11,700	10,700	94%	2,400	2,400	2,500	2,200
26	Norwich	C	18,400	18,000	17,300	18,300	17,700	17,500	83%	15,600	15,500	14,900	15,600	14,900	14,600	83%	1,900	2,100	3,300	3,600
27	Oxford	C	52,600	52,900	50,900	50,500	50,200	48,500	90%	44,400	45,300	44,000	44,400	44,100	41,900	89%	4,700	6,400	7,400	8,900
28	Peterborough	C	17,400	17,000	16,400	16,200	16,200	15,300	87%	14,200	14,000	14,100	13,700	13,500	13,000	87%	2,200	2,800	3,700	2,800
29	Portsmouth	C	13,500	13,500	12,200	12,400	11,900	12,100	100%	11,200	11,400	10,900	10,800	10,300	10,400	100%	2,100	2,000	2,500	2,700
31	Rochester	C	28,500	27,900	26,400	25,700	25,900	24,400	73%	23,600	23,800	23,100	22,600	22,800	21,300	73%	3,400	3,300	3,500	3,200
32	St. Albans	C	35,900	35,600	33,000	32,200	31,400	30,200	97%	27,100	26,800	26,500	26,300	25,600	24,200	97%	5,400	3,800	6,200	5,500
33	St. Edms & Ipswich	C	16,900	16,600	15,800	15,000	14,800	14,300	99%	13,900	14,000	13,300	12,600	12,600	12,000	99%	800	1,700	1,800	2,300
34	Salisbury	C	28,900	28,500	27,600	25,600	23,500	23,000	93%	23,800	23,900	23,700	21,900	20,400	19,800	93%	3,500	2,800	4,800	6,200
35	Sheffield	Y	20,100	20,100	18,400	17,600	17,100	16,200	95%	15,000	15,400	15,100	14,900	14,500	13,600	96%	2,500	2,500	3,600	3,300
36	Sodor & Man	Y	2,300	2,000	2,000	2,000	2,100	1,800	100%	1,900	1,700	1,700	1,500	1,700	1,400	100%	100	300	200	100
37	Southwark	C	45,200	43,100	39,100	40,600	40,200	39,400	79%	38,700	38,300	36,000	36,200	35,600	34,600	80%	-	7,100	5,100	5,200
38	Southwell & Nottingham	Y	17,000	17,100	16,000	16,000	15,000	14,000	97%	13,800	14,000	13,500	13,400	12,700	12,000	98%	4,500	3,200	3,200	3,200
39	Truro	C	11,500	11,800	11,600	11,300	11,300	10,400	81%	9,700	9,800	9,800	9,700	9,000	8,500	80%	1,100	1,600	1,800	1,700
41	Winchester	C	29,100	27,800	26,500	24,300	24,500	22,900	100%	23,000	22,300	22,500	21,100	20,900	19,500	100%	5,200	3,600	3,900	4,700
42	Worcester	C	14,400	14,800	13,200	13,100	12,300	12,100	100%	11,500	11,900	11,100	11,100	10,400	10,100	100%	1,800	2,000	2,800	3,100
43	York	Y	28,200	28,000	27,200	27,100	27,100	26,200	86%	22,600	22,700	21,800	21,500	21,200	20,800	86%	3,400	3,700	4,300	5,900
44	Europe	C	11,500	11,400	10,300	10,700	10,700	10,600	95%	10,900	10,800	9,700	9,900	9,900	9,900	95%	-	-	-	-
46	Leeds	Y	41,000	39,100	39,600	38,000	38,700	35,700	96%	33,500	32,900	33,300	32,200	32,200	30,000	96%	6,300	6,800	7,900	9,800
	Church of England		1,050,300	1,048,800	993,800	975,800	961,100	927,300	93%	858,400	864,200	844,500	829,600	813,000	779,800	93%	125,700	147,100	168,900	179,300

Notes: Attendance data were collected during the first 4 weeks of October, 2016.

Attendance at midweek school services has been measured since 2013; in 2014 attendance at school services on Sundays was measured, with explicit guidance that only school services taking place in churches or church buildings should be included. Attendance at these school services is not included in the weekly attendance or Sunday attendance totals for 2013-2016. It is likely that reported attendance before 2013 included some school service attendance, accounting for the unusually large change from 2012 to 2013.

The question about services for schools was not asked of churches in the Diocese of Southwark in 2013.

Values shown include data as reported by churches/parishes and estimates where no report has been returned.

Table 6: Diocesan average adult weekly attendance, adult Sunday attendance, and adult school service attendance, 2011-2016

Ref. no.	Diocese	Province	Adult average weekly attendance						complete-ness, 2016	Adult average Sunday attendance						complete-ness, 2016	Adult average weekly school service attendance			
			2011	2012	2013	2014	2015	2016		2011	2012	2013	2014	2015	2016		2013	2014	2015	2016
1	Bath & Wells	C	19,000	20,500	19,700	20,200	19,800	19,100	96%	17,400	18,600	17,800	17,800	17,300	16,600	95%	700	900	1,300	1,500
2	Birmingham	C	13,800	14,300	14,400	14,700	14,000	14,300	100%	12,100	12,600	12,700	12,800	12,100	12,400	100%	400	600	600	600
3	Blackburn	Y	21,200	21,500	21,700	21,300	20,600	19,500	78%	18,900	18,900	19,100	18,500	17,900	16,900	79%	400	400	400	500
5	Bristol	C	13,300	13,300	13,100	12,800	12,500	12,000	94%	11,700	11,300	11,200	10,900	10,700	10,200	94%	300	500	500	500
6	Canterbury	C	19,100	19,700	19,600	20,300	19,100	18,800	92%	16,700	16,900	16,700	17,000	15,600	15,500	91%	700	900	1,000	1,000
7	Carlisle	Y	12,500	12,800	12,500	11,800	11,500	11,100	88%	10,800	11,200	10,900	10,300	9,900	9,500	89%	500	500	800	700
8	Chelmsford	C	32,300	32,300	32,300	32,100	32,200	31,000	99%	28,800	28,800	28,500	28,400	27,900	26,700	99%	900	1,000	1,600	1,400
9	Chester	Y	29,300	28,600	28,400	28,400	28,300	27,800	71%	25,500	24,800	24,300	24,200	24,000	23,200	72%	600	800	800	900
10	Chichester	C	35,700	35,000	33,800	33,500	32,700	32,600	96%	30,400	30,600	29,300	28,800	27,900	27,300	96%	1,100	1,300	1,400	1,300
11	Coventry	C	13,000	12,800	13,200	13,300	12,900	12,700	100%	11,300	11,100	11,300	11,300	10,700	10,300	100%	300	500	800	600
12	Derby	C	14,700	14,300	13,500	13,800	14,200	13,300	93%	13,100	12,600	11,900	12,100	12,200	11,500	93%	800	1,200	1,200	900
13	Durham	Y	17,000	17,000	17,400	19,000	18,100	17,200	97%	13,800	13,800	14,000	15,000	14,200	13,400	98%	400	1,100	1,100	900
14	Ely	C	14,300	14,200	14,900	14,900	14,500	13,800	98%	13,000	13,000	13,400	13,200	12,800	12,100	98%	200	500	500	700
15	Exeter	C	21,600	20,800	20,500	20,600	21,100	21,200	95%	19,600	19,200	18,800	18,500	18,700	18,500	95%	300	800	800	900
16	Gloucester	C	16,400	16,500	15,800	16,300	16,400	15,600	94%	13,600	14,400	13,600	13,600	13,600	12,800	95%	500	800	1,000	1,100
17	Guildford	C	21,400	21,800	21,800	20,900	20,500	19,800	100%	19,000	19,300	19,300	18,400	18,100	17,200	100%	800	800	1,000	1,200
18	Hereford	C	8,700	8,600	8,800	8,600	8,700	8,700	100%	7,600	7,600	7,500	7,100	7,000	6,900	100%	100	600	600	600
19	Leicester	C	12,300	12,900	12,500	12,200	11,900	11,400	98%	10,900	11,200	11,000	10,800	10,200	9,700	98%	800	600	900	1,000
20	Lichfield	C	27,400	28,300	28,200	28,000	27,500	26,800	94%	23,400	24,200	24,200	23,900	23,300	22,500	94%	1,400	1,700	1,900	2,400
21	Lincoln	C	13,900	13,500	13,200	13,500	14,700	13,800	96%	12,100	11,800	11,000	11,100	12,100	11,200	97%	300	600	1,000	1,300
22	Liverpool	Y	22,100	21,900	21,600	20,500	20,400	19,400	92%	18,800	18,400	18,300	17,300	17,500	16,800	92%	600	900	900	700
23	London	C	59,600	63,900	63,900	62,100	61,700	60,200	98%	47,200	50,000	49,600	48,600	48,500	47,700	98%	700	1,300	1,500	1,600
24	Manchester	Y	24,500	24,100	23,800	21,700	21,200	21,400	100%	21,200	21,000	21,000	19,900	19,400	19,100	100%	700	500	1,100	900
25	Newcastle	Y	11,900	12,500	12,600	12,900	12,700	11,800	93%	10,100	10,300	10,500	10,600	10,300	9,400	93%	500	700	700	700
26	Norwich	C	16,100	15,800	15,500	16,700	16,100	16,000	83%	14,400	14,200	13,700	14,500	13,900	13,500	82%	500	600	800	1,200
27	Oxford	C	42,300	42,600	42,200	42,400	42,200	40,900	90%	37,200	38,000	36,900	37,500	37,200	35,500	89%	900	1,500	1,900	2,200
28	Peterborough	C	13,900	13,600	13,800	13,700	13,700	13,100	86%	12,000	11,800	11,900	11,700	11,500	11,100	86%	500	600	1,000	700
29	Portsmouth	C	10,900	11,000	10,600	10,800	10,400	10,700	100%	9,800	9,900	9,500	9,400	9,100	9,300	100%	300	400	600	600
31	Rochester	C	21,700	21,900	21,300	21,300	21,400	20,200	72%	19,300	19,600	19,000	18,700	18,900	17,700	72%	600	600	600	700
32	St. Albans	C	27,100	26,900	26,700	26,100	25,200	24,700	97%	22,700	22,400	22,300	22,300	21,600	20,600	96%	1,000	800	1,100	1,200
33	St. Edms & Ipswich	C	14,200	14,200	13,900	13,400	13,300	12,800	98%	12,400	12,400	11,900	11,400	11,300	10,800	98%	100	500	700	500
34	Salisbury	C	23,700	23,600	23,700	22,400	20,800	20,200	92%	20,700	20,900	20,700	19,400	18,300	17,600	93%	500	700	1,200	1,400
35	Sheffield	Y	15,800	16,100	15,100	14,800	14,300	13,800	95%	12,700	13,100	12,900	12,600	12,300	11,600	96%	500	800	1,000	900
36	Sodor & Man	Y	1,900	1,800	1,800	1,800	1,800	1,600	100%	1,700	1,500	1,500	1,300	1,500	1,200	100%	-	100	100	-
37	Southwark	C	33,200	32,300	30,700	32,200	31,900	31,300	79%	30,200	29,900	28,400	28,600	28,200	27,500	80%	-	3,600	1,100	1,100
38	Southwell & Nottingham	Y	13,600	13,900	13,800	14,000	13,000	12,100	97%	11,800	12,000	11,800	11,700	11,000	10,400	97%	800	700	500	800
39	Truro	C	10,000	10,200	10,600	10,500	10,000	9,400	80%	8,900	8,900	9,100	8,900	8,300	7,900	80%	300	400	500	500
41	Winchester	C	22,800	21,800	22,200	20,800	21,000	19,700	100%	19,600	18,900	19,300	18,100	18,100	16,900	100%	900	900	1,000	1,100
42	Worcester	C	11,700	11,900	11,400	11,300	10,700	10,700	100%	10,200	10,600	9,900	9,800	9,300	9,000	100%	300	500	800	700
43	York	Y	22,900	22,900	23,200	23,500	23,500	23,100	85%	19,500	19,600	18,800	18,700	18,600	18,300	86%	900	800	1,200	1,600
44	Europe	C	10,000	9,900	9,100	9,500	9,600	9,500	94%	9,500	9,400	8,500	8,800	8,800	8,800	94%	-	-	-	-
46	Leeds	Y	33,300	31,900	33,600	32,600	33,200	30,700	95%	28,500	28,000	28,700	27,700	27,700	25,900	96%	1,100	1,600	1,800	2,600
Church of England			840,100	843,200	836,400	831,300	819,400	793,900	92%	728,300	732,600	720,900	711,000	697,300	671,200	93%	23,100	34,300	39,300	41,700

Notes: Attendance data were collected during the first 4 weeks of October, 2016.

Attendance at school services in church has been measured since 2013; attendance at these school services is not included in the weekly attendance or Sunday attendance totals for 2013-2016. It is likely that reported attendance before 2013 included some school service attendance.

Values shown include data as reported by churches/parishes and estimates where no report has been returned.

Table 7: Diocesan average child weekly attendance, child Sunday attendance, and child school service attendance, 2011-2016

Ref. no.	Diocese	Province	Child average weekly attendance							Child average Sunday attendance							Child average weekly school service attendance			
			2011	2012	2013	2014	2015	2016	complete-ness, 2016	2011	2012	2013	2014	2015	2016	complete-ness, 2016	2013	2014	2015	2016
1	Bath & Wells	C	4,100	4,100	3,400	2,900	2,800	2,600	100%	2,300	2,400	2,100	2,000	2,100	1,900	100%	2,200	3,100	3,700	4,400
2	Birmingham	C	3,300	3,600	2,500	2,500	2,500	2,500	100%	2,200	2,200	2,200	2,200	2,200	2,200	100%	2,400	2,400	2,300	2,800
3	Blackburn	Y	5,900	5,500	4,900	4,600	4,400	4,300	75%	4,700	4,500	4,300	4,100	3,900	3,600	76%	2,000	2,100	2,300	2,900
5	Bristol	C	3,300	3,100	2,500	2,300	2,200	2,100	97%	2,300	2,200	2,000	1,900	1,800	1,700	98%	2,100	1,500	1,800	1,800
6	Canterbury	C	4,900	5,700	4,100	3,500	3,200	3,100	93%	2,800	3,300	3,200	2,900	2,700	2,600	96%	3,100	2,800	2,800	3,800
7	Carlisle	Y	2,300	2,100	1,800	1,700	1,600	1,500	89%	1,300	1,300	1,200	1,200	1,200	1,000	94%	2,000	1,200	2,100	1,300
8	Chelmsford	C	8,300	7,700	6,300	5,900	6,200	5,800	100%	5,600	5,700	5,600	5,400	5,400	4,900	100%	3,300	3,900	4,500	5,300
9	Chester	Y	6,900	7,100	5,200	4,900	4,800	4,800	70%	4,400	4,300	4,000	4,100	3,900	3,800	73%	3,200	3,200	2,700	2,500
10	Chichester	C	7,900	7,600	6,100	5,200	4,800	4,400	99%	4,500	5,100	4,500	4,300	4,000	3,700	99%	3,800	4,200	4,500	5,200
11	Coventry	C	2,300	2,700	3,000	2,300	2,100	2,100	100%	1,800	1,900	2,000	1,900	1,800	1,700	100%	1,600	2,700	2,700	2,300
12	Derby	C	2,600	3,000	2,000	1,900	2,000	1,900	97%	1,900	1,800	1,700	1,600	1,600	1,500	98%	1,900	2,400	2,700	2,800
13	Durham	Y	3,500	3,300	2,700	2,700	2,500	2,500	99%	2,100	2,000	2,100	2,100	2,000	1,900	100%	2,500	3,200	2,600	3,200
14	Ely	C	3,900	3,600	3,100	3,000	3,000	3,100	100%	2,400	2,100	2,200	2,100	2,000	2,100	100%	1,200	2,200	2,200	2,400
15	Exeter	C	3,400	3,200	2,500	2,100	2,000	2,100	100%	2,300	2,200	2,000	1,900	1,800	1,800	100%	1,500	3,200	3,300	3,300
16	Gloucester	C	3,500	3,400	2,300	2,300	2,400	2,300	97%	2,000	1,900	1,800	1,700	1,900	1,800	100%	1,300	2,400	3,500	3,900
17	Guildford	C	6,600	6,400	4,900	4,600	4,300	4,100	100%	4,400	4,500	4,200	4,000	3,700	3,400	100%	3,000	2,900	2,900	3,300
18	Hereford	C	1,400	1,400	1,200	1,000	1,000	1,100	100%	700	700	600	600	500	500	100%	1,000	700	1,600	1,800
19	Leicester	C	2,300	2,700	2,300	2,300	2,100	1,800	100%	1,500	1,700	1,700	1,600	1,500	1,300	100%	3,100	2,100	2,100	2,100
20	Lichfield	C	8,300	7,500	4,900	4,500	4,300	3,700	98%	3,500	3,500	3,500	3,300	3,000	2,700	99%	5,400	7,500	7,100	6,600
21	Lincoln	C	2,900	2,500	1,800	1,700	1,800	1,500	100%	1,300	1,400	1,200	1,300	1,400	1,200	100%	1,400	2,500	3,300	3,900
22	Liverpool	Y	6,600	6,300	4,700	4,400	4,300	4,000	95%	4,100	3,700	3,800	3,600	3,600	3,400	95%	4,100	2,700	3,200	3,100
23	London	C	16,400	17,800	12,300	11,200	11,100	10,500	99%	10,100	11,400	10,200	9,900	10,100	9,700	100%	5,100	9,000	10,000	8,900
24	Manchester	Y	8,500	8,100	6,600	6,100	6,000	5,900	100%	5,600	5,700	5,700	5,500	5,400	5,200	100%	3,700	2,300	3,600	4,500
25	Newcastle	Y	2,000	2,300	1,800	1,800	1,900	1,700	95%	1,400	1,300	1,500	1,400	1,400	1,200	99%	1,800	1,700	1,800	1,500
26	Norwich	C	2,300	2,200	1,800	1,600	1,500	1,500	84%	1,200	1,200	1,100	1,200	1,000	1,100	91%	1,400	1,500	2,500	2,300
27	Oxford	C	10,100	10,200	8,700	8,100	8,000	7,500	89%	7,000	7,100	7,000	6,900	6,900	6,400	90%	3,800	5,000	5,500	6,700
28	Peterborough	C	3,400	3,300	2,700	2,500	2,500	2,200	90%	2,200	2,100	2,200	2,000	2,000	1,800	91%	1,700	2,200	2,700	2,100
29	Portsmouth	C	2,500	2,400	1,600	1,600	1,400	1,400	100%	1,300	1,400	1,400	1,400	1,200	1,100	100%	1,800	1,700	1,900	2,100
31	Rochester	C	6,700	5,900	5,100	4,500	4,500	4,200	77%	4,200	4,100	4,100	3,800	3,900	3,600	76%	2,900	2,700	2,900	2,500
32	St. Albans	C	8,700	8,600	6,200	6,100	6,200	5,400	100%	4,300	4,300	4,200	4,000	4,000	3,600	100%	4,300	2,900	5,200	4,300
33	St. Edms & Ipswich	C	2,600	2,300	1,900	1,700	1,600	1,500	100%	1,400	1,400	1,400	1,200	1,300	1,100	100%	700	1,300	1,100	1,800
34	Salisbury	C	5,100	4,800	4,000	3,200	2,700	2,700	95%	2,900	2,900	2,900	2,500	2,200	2,100	95%	3,100	2,100	3,700	4,800
35	Sheffield	Y	4,300	3,900	3,300	2,800	2,800	2,500	97%	2,200	2,300	2,200	2,300	2,300	2,100	98%	2,100	1,700	2,600	2,400
36	Sodor & Man	Y	300	200	200	200	300	200	100%	200	200	200	200	200	100	100%	100	200	100	100
37	Southwark	C	11,800	10,800	8,400	8,400	8,300	8,100	79%	8,400	8,300	7,600	7,500	7,400	7,100	80%	-	3,500	3,900	4,000
38	Southwell & Nottingham	Y	3,400	3,100	2,200	2,100	2,000	1,900	99%	1,900	1,900	1,800	1,700	1,600	1,500	99%	3,700	2,600	2,600	2,400
39	Truro	C	1,400	1,600	1,000	800	1,300	1,000	88%	800	800	700	700	700	600	85%	800	1,200	1,300	1,200
41	Winchester	C	6,200	5,900	4,300	3,600	3,500	3,200	100%	3,300	3,300	3,200	2,900	2,800	2,600	100%	4,300	2,700	3,000	3,600
42	Worcester	C	2,600	2,800	1,900	1,800	1,700	1,500	100%	1,300	1,300	1,200	1,300	1,100	1,000	100%	1,500	1,500	2,100	2,400
43	York	Y	5,300	5,100	4,000	3,600	3,500	3,100	88%	2,900	3,000	3,000	2,800	2,700	2,400	88%	2,500	2,900	3,200	4,300
44	Europe	C	1,400	1,400	1,200	1,100	1,100	1,200	97%	1,300	1,400	1,200	1,100	1,100	1,200	97%	-	-	-	-
46	Leeds	Y	7,600	7,100	6,000	5,400	5,500	5,000	98%	4,800	4,700	4,600	4,500	4,500	4,100	99%	5,200	5,200	6,200	7,200
Church of England			206,800	202,300	157,400	144,500	141,700	133,500	94%	126,800	128,300	123,600	118,600	115,700	108,600	95%	102,600	112,800	129,600	137,600

Notes: Attendance data were collected during the first 4 weeks of October, 2016.

Attendance at school services in church has been measured since 2013; attendance at these school services is not included in the weekly attendance or Sunday attendance totals for 2013-2016. It is likely that reported attendance before 2013 included some school service attendance, accounting for the unusually large change from 2012 to 2013.

Values shown include data as reported by churches/parishes and estimates where no report has been returned.

Table 8: Diocesan average adult weekly attendance plus average child Sunday attendance, 2011-2016

Ref. no.	Diocese	Province	Adult average weekly attendance plus Child average Sunday attendance						complete-ness, 2016
			2011	2012	2013	2014	2015	2016	
1	Bath & Wells	C	21,300	22,900	21,800	22,200	21,800	21,000	96%
2	Birmingham	C	16,000	16,500	16,700	16,900	16,300	16,600	100%
3	Blackburn	Y	25,800	26,000	26,000	25,400	24,400	23,200	78%
5	Bristol	C	15,600	15,400	15,200	14,700	14,300	13,700	94%
6	Canterbury	C	21,900	23,000	22,900	23,200	21,800	21,400	93%
7	Carlisle	Y	13,800	14,100	13,700	13,000	12,700	12,100	88%
8	Chelmsford	C	37,800	38,000	37,900	37,400	37,600	35,900	99%
9	Chester	Y	33,700	33,000	32,400	32,500	32,200	31,600	71%
10	Chichester	C	40,200	40,100	38,400	37,700	36,700	36,300	97%
11	Coventry	C	14,800	14,700	15,300	15,300	14,600	14,300	100%
12	Derby	C	16,500	16,100	15,200	15,400	15,800	14,800	94%
13	Durham	Y	19,100	19,100	19,500	21,100	20,100	19,000	98%
14	Ely	C	16,600	16,300	17,100	17,100	16,500	15,800	98%
15	Exeter	C	23,900	22,900	22,500	22,500	22,900	23,000	96%
16	Gloucester	C	18,300	18,400	17,600	18,100	18,200	17,400	95%
17	Guildford	C	25,700	26,300	26,000	24,800	24,200	23,200	100%
18	Hereford	C	9,400	9,300	9,400	9,100	9,200	9,200	100%
19	Leicester	C	13,900	14,500	14,200	13,800	13,400	12,700	98%
20	Lichfield	C	30,900	31,700	31,600	31,300	30,600	29,600	94%
21	Lincoln	C	15,300	14,900	14,400	14,800	16,000	15,100	97%
22	Liverpool	Y	26,200	25,600	25,300	24,100	23,900	22,700	92%
23	London	C	69,700	75,300	74,100	72,000	71,800	69,900	98%
24	Manchester	Y	30,100	29,700	29,500	27,300	26,600	26,600	100%
25	Newcastle	Y	13,300	13,800	14,200	14,300	14,200	13,000	93%
26	Norwich	C	17,200	16,900	16,600	17,900	17,200	17,100	83%
27	Oxford	C	49,400	49,700	49,200	49,300	49,100	47,400	90%
28	Peterborough	C	16,100	15,700	15,900	15,800	15,700	14,900	87%
29	Portsmouth	C	12,300	12,400	12,000	12,100	11,600	11,800	100%
31	Rochester	C	25,900	26,000	25,400	25,100	25,300	23,800	73%
32	St. Albans	C	31,400	31,300	31,000	30,100	29,200	28,400	97%
33	St. Edms & Ipswich	C	15,600	15,600	15,300	14,600	14,600	14,000	99%
34	Salisbury	C	26,600	26,400	26,600	24,900	23,000	22,400	93%
35	Sheffield	Y	18,000	18,400	17,400	17,100	16,600	15,800	95%
36	Sodor & Man	Y	2,100	1,900	2,000	2,000	2,000	1,700	100%
37	Southwark	C	41,600	40,600	38,300	39,700	39,300	38,400	80%
38	Southwell & Nottingham	Y	15,500	15,900	15,500	15,700	14,600	13,700	97%
39	Truro	C	10,800	11,000	11,300	11,200	10,700	10,000	81%
41	Winchester	C	26,100	25,200	25,400	23,700	23,900	22,300	100%
42	Worcester	C	13,000	13,200	12,500	12,600	11,700	11,700	100%
43	York	Y	25,800	25,900	26,200	26,300	26,200	25,600	86%
44	Europe	C	11,400	11,300	10,300	10,600	10,700	10,600	95%
46	Leeds	Y	38,100	36,600	38,200	37,100	37,700	34,800	96%
	Church of England		966,900	971,500	960,000	949,900	935,000	902,500	93%

Attendance at school services in church has been measured since 2013. It is likely that reported attendance before 2013 included some school service attendance, and therefore care is needed when assessing trends in attendance as measured during the October count.

Since the majority of attendance at services for schools relates to children at midweek services, the measure “Adult average weekly attendance plus Child average Sunday attendance” is likely to be reasonably unaffected by the change in the question and is therefore the most appropriate measure to use when using the October count figures to assess trends. It is not perfect, since it will still include some adult attendance at services for schools before 2013, and it necessarily omits children’s attendance at midweek church services and fresh expressions of Church.

Notes: Attendance data were collected during the first 4 weeks of October, 2016.

Values shown include data as reported by churches/parishes and estimates where no report has been returned.

Table 9: Diocesan adult and child Usual Sunday attendance, 2011-2016

Ref. no.	Diocese	Province	2011			2012			2013			2014			2015			2016			Completeness, 2016
			Adults	Children	All	Adults	Children	All	Adults	Children	All	Adults	Children	All	Adults	Children	All	Adults	Children	All	
1	Bath & Wells	C	18,300	2,500	20,800	17,400	2,400	19,800	17,500	2,400	19,900	17,200	2,100	19,300	17,000	2,000	18,900	16,400	1,800	18,100	95%
2	Birmingham	C	11,500	2,000	13,500	11,700	2,000	13,700	11,500	2,000	13,500	11,300	2,000	13,300	11,000	1,900	12,900	11,200	2,000	13,100	99%
3	Blackburn	Y	17,200	4,000	21,200	16,800	3,800	20,600	17,000	3,800	20,800	16,100	3,600	19,800	15,800	3,400	19,100	15,500	3,100	18,700	80%
5	Bristol	C	10,800	2,000	12,800	10,400	1,900	12,300	10,500	1,900	12,300	10,000	1,700	11,800	10,100	1,800	11,900	9,700	1,600	11,400	95%
6	Canterbury	C	15,700	2,500	18,200	15,400	3,000	18,300	15,500	2,700	18,300	15,600	2,500	18,100	15,000	2,300	17,300	14,900	2,300	17,200	89%
7	Carlisle	Y	9,800	1,000	10,800	9,600	1,000	10,600	9,900	1,000	10,800	9,200	900	10,100	9,000	800	9,800	8,900	800	9,700	87%
8	Chelmsford	C	26,700	4,900	31,600	26,200	4,900	31,000	26,600	4,800	31,400	25,700	4,900	30,600	25,700	4,800	30,500	24,900	4,400	29,300	98%
9	Chester	Y	23,200	3,700	26,900	21,600	3,400	25,000	21,100	3,300	24,400	21,300	3,300	24,600	21,100	3,300	24,400	20,400	3,100	23,500	74%
10	Chichester	C	29,000	4,700	33,600	28,500	4,600	33,100	28,300	4,300	32,600	27,700	4,100	31,900	27,500	3,900	31,300	26,600	3,700	30,300	96%
11	Coventry	C	11,000	1,800	12,800	10,700	1,700	12,400	10,500	1,700	12,200	10,500	1,700	12,200	10,100	1,700	11,800	9,900	1,600	11,500	99%
12	Derby	C	11,500	1,600	13,100	11,200	1,500	12,700	10,800	1,400	12,300	11,000	1,400	12,400	10,600	1,400	12,000	10,200	1,200	11,400	94%
13	Durham	Y	11,700	1,600	13,300	11,300	1,600	12,900	11,400	1,500	12,900	11,400	1,500	12,900	11,200	1,500	12,700	10,800	1,400	12,200	97%
14	Ely	C	12,400	2,000	14,400	12,000	2,300	14,300	12,700	2,300	15,000	12,500	2,200	14,600	12,100	2,000	14,100	11,500	2,000	13,500	98%
15	Exeter	C	18,700	2,100	20,800	18,200	1,900	20,100	18,100	1,900	20,000	17,600	1,900	19,500	17,600	1,700	19,300	17,600	1,600	19,300	94%
16	Gloucester	C	13,300	1,800	15,200	13,200	1,800	14,900	13,200	1,800	15,000	13,300	1,800	15,100	12,800	1,700	14,500	12,500	1,600	14,100	94%
17	Guildford	C	17,500	3,700	21,300	17,400	3,700	21,200	17,800	3,600	21,400	17,200	3,600	20,800	16,800	3,400	20,200	16,300	3,100	19,400	99%
18	Hereford	C	7,300	700	8,100	7,600	800	8,400	7,200	700	7,900	7,100	600	7,700	7,100	600	7,700	7,200	600	7,800	99%
19	Leicester	C	11,000	1,600	12,600	10,900	1,600	12,500	11,000	1,600	12,600	10,700	1,600	12,200	10,200	1,400	11,600	10,100	1,300	11,300	96%
20	Lichfield	C	22,800	3,400	26,200	22,900	3,300	26,200	22,100	3,100	25,200	22,100	3,000	25,100	21,400	2,700	24,200	21,200	2,600	23,800	94%
21	Lincoln	C	12,600	1,200	13,900	12,600	1,200	13,800	11,900	1,100	13,100	12,300	1,200	13,400	12,400	1,100	13,600	12,100	1,200	13,200	94%
22	Liverpool	Y	16,200	3,100	19,400	16,000	3,000	19,000	15,300	2,900	18,200	14,800	2,700	17,500	14,500	2,700	17,200	14,300	2,700	16,900	92%
23	London	C	46,500	10,200	56,700	47,900	10,400	58,300	47,500	10,300	57,800	46,600	10,500	57,000	47,000	10,400	57,400	47,000	10,500	57,500	97%
24	Manchester	Y	18,600	4,900	23,500	18,300	4,900	23,300	17,800	4,900	22,700	17,300	4,700	22,000	16,600	4,400	20,900	16,100	4,300	20,400	91%
25	Newcastle	Y	9,300	1,100	10,400	9,100	1,100	10,200	9,200	1,100	10,300	9,100	1,100	10,200	8,800	1,100	9,900	8,500	1,000	9,500	95%
26	Norwich	C	14,500	1,300	15,800	14,400	1,000	15,400	14,800	1,100	15,900	15,100	1,100	16,200	15,100	1,100	16,200	15,300	1,100	16,300	82%
27	Oxford	C	35,500	6,600	42,200	35,700	6,900	42,600	36,200	7,000	43,300	35,000	6,700	41,700	35,200	6,600	41,800	34,700	6,400	41,100	89%
28	Peterborough	C	11,700	2,100	13,800	11,300	1,900	13,200	11,500	2,000	13,400	11,300	1,900	13,200	11,300	1,900	13,100	11,000	1,800	12,800	87%
29	Portsmouth	C	9,100	1,200	10,200	9,000	1,200	10,200	8,800	1,100	9,900	8,700	1,100	9,800	8,500	1,000	9,500	8,600	900	9,500	100%
31	Rochester	C	18,200	3,800	22,000	17,100	3,700	20,800	17,300	3,700	21,100	16,800	3,300	20,200	17,100	3,300	20,500	16,600	3,300	19,900	71%
32	St. Albans	C	20,900	4,100	25,000	20,600	3,900	24,400	20,100	3,700	23,900	19,900	3,600	23,500	19,700	3,500	23,300	19,100	3,300	22,400	96%
33	St. Edms & Ipswich	C	12,700	1,500	14,200	12,400	1,300	13,800	12,200	1,400	13,700	12,000	1,200	13,300	12,100	1,300	13,400	11,500	1,200	12,700	96%
34	Salisbury	C	19,700	2,600	22,300	19,400	2,500	21,900	19,000	2,300	21,300	18,500	2,100	20,600	17,900	2,000	20,000	17,900	2,000	19,900	91%
35	Sheffield	Y	11,400	1,900	13,300	11,200	1,900	13,000	11,000	1,900	12,900	10,900	1,800	12,800	10,800	1,900	12,700	10,300	1,800	12,100	95%
36	Sodor & Man	Y	1,200	200	1,400	1,200	200	1,300	1,200	200	1,400	1,200	200	1,400	1,200	100	1,400	1,200	100	1,300	100%
37	Southwark	C	28,900	7,600	36,600	27,600	7,400	35,100	27,200	7,200	34,400	26,200	7,100	33,300	26,000	6,900	32,900	25,800	6,700	32,500	82%
38	Southwell & Nottingham	Y	12,200	1,700	13,900	11,400	1,700	13,100	11,400	1,700	13,100	11,200	1,600	12,800	10,900	1,500	12,300	10,500	1,400	11,900	95%
39	Truro	C	8,400	800	9,300	8,000	700	8,700	8,300	700	9,000	8,100	600	8,800	8,000	600	8,600	7,700	500	8,200	80%
41	Winchester	C	18,700	3,300	22,000	17,500	3,300	20,800	18,400	2,900	21,300	16,800	2,600	19,500	16,900	2,600	19,500	16,700	2,400	19,100	99%
42	Worcester	C	9,800	1,100	10,900	8,800	1,000	9,800	8,800	900	9,600	8,700	900	9,600	8,600	800	9,400	8,500	800	9,300	100%
43	York	Y	17,900	2,300	20,200	17,600	2,300	19,900	17,700	2,300	19,900	17,300	2,200	19,400	17,300	2,100	19,400	17,400	2,000	19,500	85%
44	Europe	C	9,300	1,600	10,900	9,200	1,600	10,800	8,200	1,400	9,600	8,600	1,400	10,000	8,800	1,400	10,200	8,800	1,400	10,200	95%
46	Leeds	Y	26,200	4,000	30,200	25,200	3,900	29,200	25,400	4,000	29,400	24,900	3,800	28,800	24,300	3,600	27,900	23,200	3,400	26,600	95%
Church of England			689,400	115,900	805,300	674,700	114,200	788,800	671,800	111,500	783,300	659,000	107,600	766,600	651,000	104,000	755,000	638,700	100,000	738,700	92%

Notes: Data in this table refer to attendance on a "usual Sunday, when there is a service".

Values shown include data as reported by churches/parishes and estimates where no report has been returned.

Table 10: Diocesan electoral roll, 2016

Ref. no.	Diocese	Province	Electoral roll 2016
1	Bath & Wells	C	29,800
2	Birmingham	C	15,400
3	Blackburn	Y	27,500
5	Bristol	C	14,600
6	Canterbury	C	23,400
7	Carlisle	Y	17,400
8	Chelmsford	C	40,300
9	Chester	Y	38,800
10	Chichester	C	46,600
11	Coventry	C	15,200
12	Derby	C	14,700
13	Durham	Y	18,700
14	Ely	C	17,500
15	Exeter	C	26,600
16	Gloucester	C	21,500
17	Guildford	C	26,300
18	Hereford	C	14,500
19	Leicester	C	15,400
20	Lichfield	C	38,800
21	Lincoln	C	20,800
22	Liverpool	Y	23,800
23	London	C	73,900
24	Manchester	Y	27,400
25	Newcastle	Y	13,800
26	Norwich	C	17,400
27	Oxford	C	52,000
28	Peterborough	C	17,800
29	Portsmouth	C	14,200
31	Rochester	C	25,800
32	St. Albans	C	31,900
33	St. Edms & Ipswich	C	19,200
34	Salisbury	C	34,900
35	Sheffield	Y	15,300
36	Sodor & Man	Y	2,000
37	Southwark	C	42,900
38	Southwell & Nottingham	Y	16,900
39	Truro	C	13,300
41	Winchester	C	28,100
42	Worcester	C	14,700
43	York	Y	28,700
44	Europe	C	11,100
46	Leeds	Y	38,900
	Church of England		1,047,900

Note: Electoral roll data as provided by diocesan offices are used where this information is not given by churches/parishes. Therefore, no estimation has been carried out in the preparation of this table.

Table 11: Diocesan Easter communicants and attendance, 2011-2016

Ref. no.	Diocese	Province	Easter communicants						Easter attendance						complete-ness, 2016
			2011	2012	2013	2014	2015	2016	2011	2012	2013	2014	2015	2016	
1	Bath & Wells	C	28,800	27,500	25,100	26,000	25,800	24,000	39,300	38,200	34,100	35,600	36,500	33,800	93%
2	Birmingham	C	15,700	15,600	15,000	14,800	14,100	13,500	21,700	21,600	20,900	20,700	20,500	19,000	99%
3	Blackburn	Y	26,400	25,600	24,100	23,100	23,000	22,000	35,400	33,200	31,200	31,700	30,900	29,400	82%
5	Bristol	C	13,900	13,700	13,600	13,400	13,700	12,700	20,500	20,700	19,800	19,500	20,000	18,800	95%
6	Canterbury	C	24,100	23,300	22,000	22,600	22,000	20,800	34,000	32,500	31,600	32,300	31,300	29,200	90%
7	Carlisle	Y	16,300	15,900	14,400	14,600	14,200	13,400	22,300	23,600	20,100	19,800	19,900	19,600	82%
8	Chelmsford	C	37,600	35,800	34,800	35,400	35,600	33,200	53,200	52,800	50,400	51,100	50,200	47,700	98%
9	Chester	Y	30,300	28,900	25,900	27,700	27,200	26,200	41,800	39,600	36,900	39,400	39,400	37,600	73%
10	Chichester	C	44,100	41,300	40,100	40,500	39,400	37,200	61,000	60,100	56,000	56,500	55,500	52,800	96%
11	Coventry	C	15,200	14,700	13,500	13,700	13,800	13,400	20,300	20,600	18,900	19,100	19,600	18,200	99%
12	Derby	C	16,100	15,700	14,900	14,500	14,700	14,500	21,600	21,300	20,500	20,100	19,800	19,300	93%
13	Durham	Y	16,100	15,800	14,800	15,200	15,000	14,100	21,500	21,400	20,200	20,900	20,300	19,800	97%
14	Ely	C	16,400	16,500	14,800	15,400	15,200	14,300	23,100	22,100	22,600	23,100	22,300	21,300	97%
15	Exeter	C	32,100	31,100	28,500	28,900	29,500	27,400	42,600	40,600	37,800	38,000	38,300	35,600	94%
16	Gloucester	C	21,100	20,500	18,500	19,900	18,900	18,600	29,200	29,700	26,300	28,200	27,100	26,700	91%
17	Guildford	C	25,000	24,400	23,100	24,600	23,400	22,100	37,500	37,100	34,600	36,500	34,600	32,200	99%
18	Hereford	C	13,100	12,900	11,300	11,000	11,800	11,000	17,100	17,600	14,800	14,600	15,400	14,500	99%
19	Leicester	C	14,800	15,100	14,600	14,100	13,900	12,500	19,900	21,000	20,000	20,000	19,100	17,400	96%
20	Lichfield	C	32,400	31,800	30,500	29,900	29,900	28,300	42,300	42,100	41,300	40,000	40,100	37,300	93%
21	Lincoln	C	18,200	16,800	15,100	16,000	16,200	15,500	23,400	23,800	19,900	21,000	21,700	20,100	96%
22	Liverpool	Y	23,100	21,800	20,600	21,000	19,700	18,700	31,000	29,400	26,900	27,300	26,100	24,900	90%
23	London	C	55,700	54,400	50,100	56,300	53,500	51,800	84,700	85,300	90,500	89,100	85,300	84,600	97%
24	Manchester	Y	25,100	24,500	23,100	22,800	22,600	21,500	34,100	33,000	32,200	32,000	31,300	30,300	88%
25	Newcastle	Y	12,800	12,800	11,800	11,700	12,200	11,200	17,600	18,200	16,800	17,700	17,400	16,100	94%
26	Norwich	C	23,100	21,300	19,000	20,400	20,200	18,300	29,700	27,100	26,000	27,700	27,400	26,000	80%
27	Oxford	C	50,800	47,800	44,400	49,500	48,000	45,600	73,300	72,700	67,300	71,900	70,400	67,200	91%
28	Peterborough	C	18,600	17,700	16,400	17,300	16,700	16,000	24,400	23,600	23,100	24,000	23,100	22,100	85%
29	Portsmouth	C	15,400	14,600	13,900	14,200	13,800	12,800	20,500	20,300	19,400	19,900	18,500	17,800	100%
31	Rochester	C	23,800	22,800	21,600	22,700	22,300	20,900	35,100	35,400	33,300	34,300	33,800	31,700	72%
32	St. Albans	C	30,300	30,100	28,300	28,400	28,800	27,500	43,000	44,400	40,000	42,000	41,700	39,500	96%
33	St. Edms & Ipswich	C	20,100	19,000	17,500	17,800	17,400	16,200	27,000	26,600	24,000	25,100	23,700	21,800	96%
34	Salisbury	C	32,600	32,000	29,300	29,600	29,300	26,900	44,000	44,200	40,500	41,900	41,100	37,800	91%
35	Sheffield	Y	13,500	13,700	13,300	13,200	12,500	12,200	19,600	19,600	18,700	19,500	19,400	17,800	95%
36	Sodor & Man	Y	2,100	1,900	1,800	2,000	1,800	1,700	2,800	2,600	2,600	2,500	2,500	2,200	100%
37	Southwark	C	39,700	37,500	37,500	37,700	37,500	37,000	58,700	54,000	57,600	55,900	55,900	54,500	78%
38	Southwell & Nottingham	Y	14,400	13,900	13,900	14,100	14,000	13,300	19,700	19,600	19,700	19,000	19,300	17,900	95%
39	Truro	C	15,100	14,700	13,100	13,900	14,300	13,000	20,400	20,300	18,200	19,000	18,800	17,900	78%
41	Winchester	C	27,100	26,200	25,300	26,300	24,800	23,100	38,800	37,300	36,000	36,200	36,000	33,600	98%
42	Worcester	C	14,000	13,400	12,500	12,300	12,300	11,200	19,000	18,200	17,400	16,700	16,800	15,400	100%
43	York	Y	25,600	25,500	23,300	23,900	23,600	22,900	35,400	34,700	31,700	33,400	33,200	31,800	85%
44	Europe	C	15,000	14,700	12,900	13,300	13,700	12,800	19,200	19,100	16,700	17,100	17,500	16,700	96%
46	Leeds	Y	38,700	37,000	34,400	35,900	35,300	34,000	52,500	48,700	45,300	47,100	47,300	45,000	95%
Church of England			994,100	960,200	898,500	925,500	911,500	863,300	1,378,200	1,353,600	1,281,500	1,307,500	1,289,000	1,222,700	91%

Notes: Figures include communicants and attendance at any services on Easter Day or vigil services on Easter Eve.

Communicants are a subset of those attending.

Values shown include data as reported by churches/parishes and estimates where no report has been returned.

Table 12: Diocesan Christmas communicants and attendance, 2011-2016

Ref. no.	Diocese	Province	Christmas communicants						Christmas attendance						complete-ness, 2016	Advent attendance, 2016	
			2011	2012	2013	2014	2015	2016	2011	2012	2013	2014	2015	2016		Congregation & community services	Civic and school services
1	Bath & Wells	C	31,000	28,700	27,600	28,100	28,200	28,400	76,900	69,000	66,000	67,600	71,200	72,800	93%	87,500	82,400
2	Birmingham	C	15,100	13,900	13,200	12,800	12,700	12,900	38,100	39,000	36,000	36,500	37,900	37,900	99%	38,000	53,300
3	Blackburn	Y	22,100	21,200	19,800	18,600	19,000	18,500	48,300	50,600	47,400	43,400	44,800	44,700	77%	36,400	45,700
5	Bristol	C	15,900	15,800	15,300	14,200	14,400	14,800	45,900	43,600	41,300	39,500	42,100	41,100	94%	53,000	50,600
6	Canterbury	C	25,200	22,500	22,400	22,400	22,700	21,800	72,400	66,300	63,400	65,600	69,300	68,700	90%	52,800	71,900
7	Carlisle	Y	15,700	14,500	13,200	13,400	12,900	12,000	35,700	36,100	31,800	32,500	33,000	33,600	88%	34,400	37,000
8	Chelmsford	C	37,300	31,700	31,200	31,200	32,600	32,400	111,800	97,600	96,600	96,000	104,900	105,500	99%	104,300	116,900
9	Chester	Y	31,800	28,000	24,600	26,500	26,200	26,100	81,400	74,500	71,800	78,100	79,400	81,500	70%	62,500	85,100
10	Chichester	C	46,400	40,600	37,900	37,600	39,700	39,800	127,200	107,900	103,600	104,900	111,500	113,600	95%	105,400	109,200
11	Coventry	C	15,600	13,900	13,800	13,900	14,400	14,300	43,700	42,600	43,300	41,000	41,000	41,000	99%	39,000	47,200
12	Derby	C	15,500	13,500	13,200	13,800	13,500	13,300	42,400	37,300	41,200	39,500	41,700	42,700	91%	47,300	54,400
13	Durham	Y	14,600	12,900	12,200	12,700	13,200	13,000	38,700	37,100	33,800	38,000	39,500	40,200	97%	36,600	68,800
14	Ely	C	17,900	16,200	15,400	15,500	16,500	15,700	51,600	47,100	48,300	48,000	51,300	50,400	93%	51,700	46,200
15	Exeter	C	33,400	28,800	26,900	28,300	29,100	28,400	77,500	65,600	66,100	67,900	70,900	72,200	94%	76,600	71,100
16	Gloucester	C	24,900	20,700	19,800	21,100	21,500	21,000	63,200	56,600	54,800	55,900	59,300	61,700	95%	53,700	49,000
17	Guildford	C	27,200	24,500	23,400	24,300	23,800	24,400	92,200	86,000	78,900	81,200	84,600	88,100	99%	83,200	82,300
18	Hereford	C	14,200	12,500	12,400	12,200	12,700	11,900	29,500	25,900	24,400	24,300	28,200	27,200	99%	31,700	25,100
19	Leicester	C	16,000	14,800	14,500	13,700	13,100	12,900	37,200	37,700	38,200	39,400	41,400	41,900	97%	47,000	50,200
20	Lichfield	C	34,000	30,900	30,900	29,600	29,900	29,700	79,400	76,500	79,000	74,900	82,200	84,300	92%	75,800	127,800
21	Lincoln	C	18,800	17,800	16,100	16,000	17,100	16,300	45,500	43,800	37,500	39,100	43,300	46,600	94%	59,400	70,800
22	Liverpool	Y	21,000	18,500	18,500	16,800	17,200	17,200	39,000	32,100	36,000	36,200	37,800	38,300	92%	46,000	54,300
23	London	C	57,300	53,800	50,300	53,100	53,700	51,200	123,700	119,800	118,800	123,800	125,400	128,900	97%	162,800	171,000
24	Manchester	Y	21,500	20,400	19,000	18,200	18,100	18,100	42,400	43,100	40,900	37,100	37,000	38,700	90%	50,400	64,400
25	Newcastle	Y	12,000	11,200	10,800	10,900	10,800	10,700	40,600	40,100	37,900	38,900	38,200	39,700	95%	37,800	43,200
26	Norwich	C	21,800	19,400	18,200	18,700	19,100	18,800	62,800	53,800	54,700	53,000	58,900	59,200	82%	54,800	55,900
27	Oxford	C	56,900	50,200	48,900	52,300	54,000	52,600	154,100	139,600	138,100	150,900	160,400	160,700	90%	133,800	127,900
28	Peterborough	C	19,900	18,000	17,600	17,400	16,900	17,800	53,400	51,600	47,100	47,800	52,500	52,100	85%	40,500	39,000
29	Portsmouth	C	15,900	13,800	13,300	13,600	13,600	13,600	44,200	42,100	39,100	41,100	40,500	41,800	100%	41,800	51,500
31	Rochester	C	24,200	21,000	19,800	19,900	21,100	21,100	75,500	67,800	64,100	66,400	71,200	71,800	75%	50,600	71,500
32	St. Albans	C	32,800	30,700	28,900	29,500	29,000	29,300	96,500	96,500	90,300	93,800	100,800	105,400	96%	66,500	120,500
33	St. Edms & Ipswich	C	19,800	18,300	16,700	16,700	16,800	15,900	52,300	46,600	44,600	44,000	47,400	49,200	97%	44,600	48,700
34	Salisbury	C	35,700	32,600	31,700	31,800	31,300	30,600	80,600	77,500	78,300	77,700	79,600	77,300	88%	69,000	71,300
35	Sheffield	Y	13,100	10,600	10,700	10,400	10,700	10,500	34,700	32,800	32,900	32,500	34,300	36,000	95%	46,600	48,900
36	Sodor & Man	Y	1,800	1,800	1,900	1,800	1,700	1,700	4,400	3,500	3,600	3,900	4,100	3,700	100%	6,400	6,800
37	Southwark	C	42,200	37,900	39,000	36,800	37,800	38,800	105,100	99,300	103,000	97,400	106,600	107,500	78%	80,100	108,400
38	Southwell & Nottingham	Y	14,900	12,500	12,600	12,800	12,700	12,100	42,600	36,500	37,900	37,600	40,100	39,400	96%	42,900	52,100
39	Truro	C	14,400	12,800	12,000	12,500	12,700	12,500	34,700	31,300	28,900	28,000	30,000	30,500	80%	33,900	29,700
41	Winchester	C	31,700	27,600	27,700	27,900	28,000	27,500	82,600	77,300	72,500	72,900	75,400	76,400	97%	76,600	85,100
42	Worcester	C	15,200	13,200	12,600	12,400	12,300	12,100	38,600	36,700	37,400	36,700	38,100	38,000	100%	38,000	56,400
43	York	Y	27,100	24,600	23,700	23,300	23,800	25,000	75,700	67,100	65,500	65,800	67,800	67,600	84%	60,300	73,200
44	Europe	C	13,300	10,800	10,000	10,500	11,700	11,400	21,100	17,700	16,400	16,600	18,300	19,200	95%	32,300	1,800
46	Leeds	Y	37,400	32,800	32,400	32,300	33,100	32,600	98,400	91,300	90,200	95,300	102,000	102,600	94%	97,900	122,400
Church of England			1,022,500	916,100	879,900	885,500	899,400	888,600	2,641,500	2,444,700	2,381,700	2,410,600	2,543,800	2,580,000	91%	2,490,200	2,848,800

Notes: Figures include communicants and attendance at any services on Christmas Eve or Christmas Day.

Communicants are a subset of those attending.

Values shown include data as reported by churches/parishes and estimates where no report has been returned.

Table 13: Diocesan participation as a percentage of diocesan population and as a percentage of diocesan Christian population, 2016

Ref. no.	Diocese	Province	Total					% of population					% of Christian population				
			Worshipping Community	Average weekly attendance	Usual Sunday attendance	Easter attendance	Christmas attendance	Worshipping Community	Average weekly attendance	Usual Sunday attendance	Easter attendance	Christmas attendance	Worshipping Community	Average weekly attendance	Usual Sunday attendance	Easter attendance	Christmas attendance
1	Bath & Wells	C	25,950	21,750	18,140	33,820	72,800	2.7%	2.3%	1.9%	3.6%	7.7%	4.4%	3.7%	3.1%	5.8%	12.4%
2	Birmingham	C	21,150	16,830	13,130	19,010	37,880	1.4%	1.1%	0.8%	1.2%	2.4%	2.7%	2.1%	1.7%	2.4%	4.8%
3	Blackburn	Y	26,220	23,780	18,670	29,410	44,660	2.0%	1.8%	1.4%	2.2%	3.3%	2.9%	2.6%	2.1%	3.3%	5.0%
5	Bristol	C	18,010	14,070	11,360	18,830	41,070	1.8%	1.4%	1.1%	1.8%	4.0%	3.3%	2.6%	2.1%	3.4%	7.5%
6	Canterbury	C	26,630	21,940	17,190	29,150	68,720	2.4%	1.9%	1.5%	2.6%	6.1%	3.8%	3.1%	2.4%	4.1%	9.8%
7	Carlisle	Y	14,150	12,620	9,680	19,570	33,630	2.9%	2.5%	2.0%	3.9%	6.8%	4.0%	3.5%	2.7%	5.5%	9.4%
8	Chelmsford	C	44,090	36,840	29,320	47,730	105,510	1.4%	1.2%	0.9%	1.5%	3.3%	2.5%	2.1%	1.7%	2.7%	6.0%
9	Chester	Y	37,640	32,610	23,480	37,610	81,500	2.3%	2.0%	1.4%	2.3%	5.0%	3.4%	2.9%	2.1%	3.4%	7.3%
10	Chichester	C	48,240	36,970	30,300	52,780	113,600	2.9%	2.2%	1.8%	3.1%	6.8%	5.0%	3.8%	3.1%	5.4%	11.7%
11	Coventry	C	17,370	14,770	11,550	18,240	41,040	2.0%	1.7%	1.3%	2.1%	4.7%	3.4%	2.9%	2.2%	3.5%	7.9%
12	Derby	C	17,950	15,240	11,440	19,300	42,740	1.7%	1.5%	1.1%	1.8%	4.1%	2.8%	2.4%	1.8%	3.0%	6.7%
13	Durham	Y	19,620	19,650	12,230	19,800	40,240	1.3%	1.3%	0.8%	1.3%	2.7%	1.9%	1.9%	1.2%	1.9%	3.9%
14	Ely	C	22,030	16,840	13,470	21,270	50,390	2.9%	2.2%	1.8%	2.8%	6.6%	4.9%	3.8%	3.0%	4.7%	11.2%
15	Exeter	C	25,740	23,290	19,270	35,570	72,170	2.2%	2.0%	1.6%	3.0%	6.1%	3.6%	3.3%	2.7%	5.0%	10.1%
16	Gloucester	C	23,320	17,940	14,100	26,660	61,710	3.5%	2.7%	2.1%	4.0%	9.3%	5.5%	4.3%	3.4%	6.3%	14.7%
17	Guildford	C	31,830	23,890	19,430	32,170	88,080	3.0%	2.3%	1.8%	3.1%	8.4%	4.9%	3.7%	3.0%	4.9%	13.5%
18	Hereford	C	12,750	9,850	7,780	14,450	27,180	3.9%	3.0%	2.4%	4.4%	8.3%	5.8%	4.5%	3.5%	6.6%	12.4%
19	Leicester	C	18,220	13,190	11,340	17,440	41,910	1.8%	1.3%	1.1%	1.7%	4.0%	3.4%	2.5%	2.1%	3.3%	7.9%
20	Lichfield	C	44,390	30,510	23,840	37,270	84,310	2.1%	1.4%	1.1%	1.7%	3.9%	3.3%	2.3%	1.8%	2.8%	6.2%
21	Lincoln	C	18,660	15,380	13,250	20,090	46,560	1.7%	1.4%	1.2%	1.9%	4.3%	2.6%	2.1%	1.8%	2.8%	6.5%
22	Liverpool	Y	25,250	23,350	16,950	24,920	38,300	1.6%	1.5%	1.1%	1.6%	2.4%	2.1%	1.9%	1.4%	2.1%	3.2%
23	London	C	89,390	70,630	57,470	84,560	128,900	2.1%	1.6%	1.3%	2.0%	3.0%	4.8%	3.8%	3.1%	4.5%	6.9%
24	Manchester	Y	28,400	27,240	20,360	30,320	38,690	1.3%	1.3%	0.9%	1.4%	1.8%	2.2%	2.1%	1.6%	2.4%	3.0%
25	Newcastle	Y	14,190	13,490	9,500	16,090	39,680	1.7%	1.6%	1.2%	2.0%	4.9%	2.8%	2.6%	1.8%	3.1%	7.7%
26	Norwich	C	22,580	17,480	16,340	26,040	59,210	2.5%	1.9%	1.8%	2.9%	6.5%	4.1%	3.2%	3.0%	4.8%	10.8%
27	Oxford	C	64,790	48,450	41,110	67,200	160,740	2.7%	2.0%	1.7%	2.8%	6.8%	4.7%	3.5%	3.0%	4.9%	11.7%
28	Peterborough	C	21,960	15,290	12,820	22,070	52,120	2.4%	1.7%	1.4%	2.4%	5.7%	4.0%	2.8%	2.4%	4.1%	9.6%
29	Portsmouth	C	15,430	12,110	9,530	17,820	41,820	2.0%	1.5%	1.2%	2.3%	5.3%	3.3%	2.6%	2.1%	3.9%	9.1%
31	Rochester	C	31,070	24,370	19,850	31,660	71,810	2.3%	1.8%	1.5%	2.3%	5.3%	3.8%	2.9%	2.4%	3.8%	8.7%
32	St. Albans	C	34,320	30,180	22,380	39,520	105,440	1.8%	1.6%	1.2%	2.1%	5.5%	3.1%	2.8%	2.0%	3.6%	9.6%
33	St. Edms & Ipswich	C	17,760	14,300	12,710	21,810	49,230	2.7%	2.1%	1.9%	3.3%	7.4%	4.4%	3.5%	3.1%	5.4%	12.1%
34	Salisbury	C	31,210	22,950	19,890	37,830	77,290	3.3%	2.4%	2.1%	4.0%	8.2%	5.2%	3.8%	3.3%	6.3%	12.8%
35	Sheffield	Y	19,510	16,250	12,080	17,750	36,030	1.5%	1.3%	0.9%	1.4%	2.8%	2.5%	2.1%	1.6%	2.3%	4.6%
36	Sodor & Man	Y	1,810	1,780	1,320	2,230	3,710	2.0%	2.0%	1.5%	2.5%	4.2%	-	-	-	-	-
37	Southwark	C	52,180	39,420	32,490	54,490	107,500	1.8%	1.4%	1.1%	1.9%	3.8%	3.3%	2.5%	2.1%	3.5%	6.9%
38	Southwell & Nottingham	Y	18,700	14,020	11,890	17,890	39,420	1.6%	1.2%	1.0%	1.6%	3.5%	2.9%	2.2%	1.8%	2.8%	6.1%
39	Truro	C	11,540	10,420	8,220	17,890	30,530	2.1%	1.9%	1.5%	3.2%	5.5%	3.5%	3.1%	2.5%	5.4%	9.2%
41	Winchester	C	26,840	22,940	19,120	33,570	76,450	2.2%	1.9%	1.6%	2.7%	6.2%	3.6%	3.1%	2.6%	4.5%	10.3%
42	Worcester	C	13,600	12,120	9,350	15,450	38,030	1.5%	1.4%	1.1%	1.7%	4.3%	2.3%	2.1%	1.6%	2.6%	6.5%
43	York	Y	28,760	26,250	19,470	31,800	67,610	2.0%	1.8%	1.4%	2.2%	4.7%	3.1%	2.8%	2.1%	3.4%	7.3%
44	Europe	C	16,220	10,650	10,230	16,690	19,180	-	-	-	-	-	-	-	-	-	-
46	Leeds	Y	39,260	35,710	26,640	45,000	102,630	1.4%	1.3%	1.0%	1.7%	3.8%	2.5%	2.3%	1.7%	2.9%	6.6%
	Church of England		1,138,760	927,340	738,680	1,222,730	2,580,000	2.0%	1.7%	1.3%	2.2%	4.6%	3.4%	2.8%	2.2%	3.7%	7.8%

Notes:
Church of England percentage figures do not include the Diocese in Europe.

Figures relating to the Christian population for the Church of England exclude the Diocese of Sodor & Man and the Diocese in Europe.

The Christian population includes those affiliated with the Church of England and with other Christian denominations.

Table 14: Diocesan baptisms and thanksgivings, 2011-2016

Ref. no.	Diocese	Province	Infant and child baptisms					Infant baptisms		Child baptisms		Mature baptisms						Thanksgivings			
			2011	2012	2013	2014	2015	2016	2016	complete-ness, 2016	2016	complete-ness, 2016	2011	2012	2013	2014	2015	2016	2014	2015	2016
1	Bath & Wells	C	2,640	2,540	2,420	2,340	2,070	1,980	1,350	93%	630	94%	170	200	170	150	140	120	80	80	100
2	Birmingham	C	2,280	2,190	2,260	1,960	1,960	1,900	1,130	99%	770	99%	200	220	270	230	230	220	70	60	70
3	Blackburn	Y	4,130	4,040	4,200	3,910	3,620	3,480	2,170	75%	1,310	68%	210	210	240	220	180	170	50	70	60
5	Bristol	C	1,750	1,680	1,670	1,500	1,470	1,350	890	94%	460	91%	120	130	140	160	140	120	40	40	90
6	Canterbury	C	3,120	2,940	3,000	2,810	2,630	2,450	1,610	87%	850	91%	240	250	260	260	220	210	130	90	110
7	Carlisle	Y	2,070	2,170	2,280	2,040	1,900	1,750	1,380	90%	370	91%	100	90	110	100	80	70	30	30	40
8	Chelmsford	C	4,750	4,630	4,740	4,340	4,040	3,590	2,100	98%	1,480	98%	700	680	730	670	650	510	350	190	220
9	Chester	Y	4,580	4,330	4,350	4,130	3,900	3,820	2,470	64%	1,350	69%	310	290	320	250	270	230	340	300	320
10	Chichester	C	3,590	3,480	3,190	2,980	2,870	2,590	1,640	97%	950	94%	230	300	300	230	220	220	130	110	130
11	Coventry	C	1,790	1,740	1,790	1,590	1,580	1,470	860	100%	610	100%	170	180	150	150	140	150	130	80	80
12	Derby	C	2,330	2,330	2,210	2,010	2,050	1,870	1,300	87%	580	84%	130	140	140	150	150	130	90	120	100
13	Durham	Y	5,040	5,000	5,000	4,670	4,450	4,380	3,080	97%	1,300	95%	290	300	320	360	320	500	190	220	130
14	Ely	C	1,770	1,840	1,760	1,710	1,590	1,460	960	96%	500	100%	140	180	130	180	130	180	70	70	110
15	Exeter	C	2,910	2,700	2,640	2,430	2,200	2,160	1,460	93%	710	94%	250	240	200	190	210	170	90	40	60
16	Gloucester	C	2,080	2,090	1,880	1,820	1,870	1,810	1,230	93%	580	93%	220	260	240	210	190	180	50	60	50
17	Guildford	C	2,970	2,770	2,580	2,500	2,460	2,190	1,260	98%	930	98%	210	230	180	190	210	210	130	110	110
18	Hereford	C	1,300	1,270	1,180	1,140	1,140	1,120	830	99%	290	100%	90	90	90	60	80	50	10	20	20
19	Leicester	C	1,620	1,730	1,700	1,530	1,490	1,310	800	97%	510	95%	140	170	160	150	170	130	30	40	50
20	Lichfield	C	5,760	5,670	5,550	5,190	4,890	4,510	2,960	93%	1,550	88%	480	480	430	420	400	370	390	260	240
21	Lincoln	C	3,870	3,920	3,520	3,400	3,430	3,180	2,370	96%	810	95%	210	250	230	180	190	230	50	60	50
22	Liverpool	Y	4,680	4,280	4,210	4,070	3,790	3,700	2,200	89%	1,490	88%	280	280	310	300	380	360	130	150	70
23	London	C	4,430	4,200	4,090	3,880	3,620	3,590	1,920	98%	1,670	96%	620	650	620	710	640	580	170	190	180
24	Manchester	Y	4,950	5,120	5,160	4,660	4,420	4,160	2,550	92%	1,610	93%	390	410	420	480	400	410	300	260	210
25	Newcastle	Y	2,230	2,130	2,130	2,190	2,180	1,960	1,400	88%	560	89%	150	150	190	150	170	190	20	20	20
26	Norwich	C	2,090	2,010	2,110	1,900	1,740	1,550	1,070	87%	480	85%	190	200	220	190	190	170	80	90	80
27	Oxford	C	5,770	5,420	5,460	4,940	4,680	4,510	2,890	89%	1,620	86%	440	430	410	440	360	370	190	190	200
28	Peterborough	C	1,900	1,920	1,940	1,770	1,680	1,500	970	84%	530	82%	150	160	180	180	150	120	70	60	70
29	Portsmouth	C	1,740	1,780	1,740	1,640	1,580	1,360	850	100%	510	100%	160	160	140	130	110	130	50	80	60
31	Rochester	C	3,090	2,960	2,970	2,740	2,700	2,470	1,360	72%	1,110	68%	300	290	320	290	220	240	200	180	190
32	St. Albans	C	3,610	3,530	3,390	3,240	3,070	2,970	1,710	96%	1,250	96%	330	370	320	320	310	290	150	150	130
33	St. Edms & Ipswich	C	1,510	1,530	1,440	1,290	1,280	1,160	780	95%	380	99%	110	90	90	90	100	110	60	50	70
34	Salisbury	C	2,890	2,830	2,680	2,540	2,360	2,120	1,450	89%	670	90%	260	230	210	230	190	170	80	60	50
35	Sheffield	Y	3,300	3,230	3,100	2,840	2,700	2,580	1,740	95%	840	96%	360	320	400	330	310	280	230	240	250
36	Sodor & Man	Y	250	190	210	250	180	160	120	100%	50	100%	20	10	10	20	10	10	-	-	-
37	Southwark	C	4,360	4,010	2,590	3,610	3,460	3,420	1,960	78%	1,460	84%	470	460	480	360	320	390	170	140	120
38	Southwell & Nottingham	C	2,190	2,170	2,130	1,960	1,780	1,760	1,150	98%	610	96%	240	280	270	300	230	210	90	70	90
39	Truro	C	1,660	1,590	1,570	1,390	1,450	1,220	840	74%	380	74%	110	110	100	110	90	100	30	20	30
41	Winchester	C	3,260	3,290	3,260	2,860	2,630	2,450	1,690	97%	770	93%	210	230	200	210	170	180	130	110	140
42	Worcester	C	2,490	2,370	2,430	2,230	2,080	1,940	1,290	100%	650	100%	180	180	160	140	170	170	140	100	100
43	York	Y	4,540	4,480	4,380	3,980	3,770	3,670	2,670	84%	990	80%	350	340	310	280	290	240	130	150	150
44	Europe	C	480	490	390	350	400	340	170	97%	170	94%	80	80	100	100	120	120	30	30	40
46	Leeds	Y	6,040	5,950	5,810	5,380	5,210	4,820	3,230	94%	1,590	91%	540	660	580	590	650	680	380	340	380
Church of England			127,820	124,500	121,120	113,680	108,350	101,790	65,860	91%	35,930	90%	10,510	10,960	10,840	10,440	9,890	9,670	5,250	4,700	4,770

Notes: Here, infants are those aged under 1 year. Children are those aged 1-12 years. Mature baptisms are those aged 13 years and over.

Values shown include data as reported by churches/parishes and estimates where no report has been returned.

Table 15: Diocesan marriages and services of prayer and dedication after civil marriages, 2011-2016

Ref. no.	Diocese	Province	Marriages							complete-ness, 2016	Services of prayer and dedication after civil marriages						
			2011	2012	2013	2014	2015	2016	2011		2012	2013	2014	2015	2016	complete-ness, 2016	
1	Bath & Wells	C	1,320	1,640	1,410	1,350	1,380	1,300	94%	90	70	80	50	70	50	93%	
2	Birmingham	C	940	920	810	840	770	700	99%	50	50	60	50	60	40	100%	
3	Blackburn	Y	1,110	1,160	1,110	1,040	980	950	75%	60	50	50	40	50	40	76%	
5	Bristol	C	800	810	710	700	650	590	93%	50	40	40	30	40	40	84%	
6	Canterbury	C	1,430	1,460	1,360	1,330	1,270	1,140	87%	120	90	140	80	70	60	84%	
7	Carlisle	Y	730	790	770	810	740	710	89%	50	40	40	40	40	50	91%	
8	Chelmsford	C	2,380	2,290	1,930	1,790	1,730	1,730	98%	130	130	110	100	120	110	93%	
9	Chester	Y	1,670	1,780	1,630	1,540	1,490	1,410	65%	80	50	70	90	120	140	27%	
10	Chichester	C	1,880	1,940	1,700	1,580	1,510	1,500	94%	150	140	120	100	100	110	91%	
11	Coventry	C	910	1,020	910	830	770	670	100%	60	40	50	40	40	40	100%	
12	Derby	C	1,100	1,170	1,050	1,030	1,000	930	90%	70	40	40	40	50	70	94%	
13	Durham	Y	1,110	1,200	1,060	1,090	1,010	980	98%	60	50	80	50	50	40	98%	
14	Ely	C	910	1,010	920	870	830	790	97%	60	40	30	40	50	30	100%	
15	Exeter	C	1,570	1,680	1,540	1,460	1,400	1,310	93%	90	90	90	70	70	70	95%	
16	Gloucester	C	1,130	1,300	1,140	1,080	1,170	1,110	91%	70	70	60	60	50	50	94%	
17	Guildford	C	1,130	1,200	1,090	990	970	900	99%	80	60	60	60	40	70	97%	
18	Hereford	C	650	670	630	600	620	600	100%	40	40	30	30	50	50	100%	
19	Leicester	C	980	1,010	880	890	780	770	97%	50	50	50	50	40	40	95%	
20	Lichfield	C	2,120	2,300	2,080	1,960	1,860	1,790	94%	130	100	90	80	80	70	91%	
21	Lincoln	C	1,320	1,500	1,260	1,150	1,130	1,150	95%	80	90	70	60	60	60	96%	
22	Liverpool	Y	940	1,090	930	880	820	810	92%	80	50	40	60	50	40	92%	
23	London	C	1,400	1,420	1,250	1,180	1,110	990	97%	170	130	140	130	140	120	99%	
24	Manchester	Y	1,090	1,130	1,060	990	930	930	93%	70	60	60	70	60	50	93%	
25	Newcastle	Y	650	710	610	620	530	550	92%	30	30	30	30	40	40	91%	
26	Norwich	C	1,250	1,280	1,210	1,180	1,020	1,080	86%	100	60	60	50	50	40	93%	
27	Oxford	C	2,710	2,800	2,550	2,400	2,310	2,260	87%	150	180	150	130	170	160	85%	
28	Peterborough	C	1,020	1,110	1,020	1,010	980	900	83%	40	60	60	50	60	50	79%	
29	Portsmouth	C	920	1,000	850	820	740	670	100%	70	60	60	50	50	60	100%	
31	Rochester	C	1,070	1,190	1,100	1,020	970	960	63%	100	70	80	90	70	60	65%	
32	St. Albans	C	1,540	1,620	1,470	1,420	1,410	1,370	95%	80	80	80	60	80	70	99%	
33	St. Edms & Ipswich	C	1,120	1,090	900	870	810	750	95%	60	60	40	70	50	60	80%	
34	Salisbury	C	1,400	1,490	1,390	1,320	1,240	1,160	87%	110	100	70	60	60	60	89%	
35	Sheffield	Y	1,050	1,140	960	920	830	810	97%	60	40	30	30	40	40	92%	
36	Sodor & Man	Y	130	130	90	90	100	100	100%	10	-	10	10	10	10	100%	
37	Southwark	C	1,360	1,300	1,260	1,110	980	970	73%	90	70	70	80	70	70	78%	
38	Southwell & Nottingham	Y	1,050	1,150	1,050	1,000	940	910	95%	80	60	60	60	40	60	100%	
39	Truro	C	890	1,140	960	980	940	890	78%	70	60	50	40	30	40	94%	
41	Winchester	C	1,580	1,630	1,570	1,300	1,230	1,160	97%	80	80	80	70	70	70	94%	
42	Worcester	C	1,130	1,150	1,040	940	890	880	100%	70	50	50	40	40	50	100%	
43	York	Y	1,610	1,750	1,650	1,610	1,600	1,560	82%	70	80	80	70	60	70	89%	
44	Europe	C	100	100	110	100	80	130	99%	330	280	240	230	250	280	99%	
46	Leeds	Y	2,290	2,300	2,180	2,090	1,970	1,880	95%	110	90	70	70	90	70	95%	
	Church of England		51,460	54,550	49,170	46,740	44,450	42,730	90%	3,580	3,040	2,950	2,710	2,790	2,770	89%	

Note: Values shown include data as reported by churches/parishes and estimates where no report has been returned.

Table 16: Diocesan funeral services held in church and at crematoria/cemeteries, 2011-2016

Ref. no.	Diocese	Province	Funerals in church						complete-ness, 2016	Funerals at crematoria/cemeteries						complete-ness, 2016
			2011	2012	2013	2014	2015	2016		2011	2012	2013	2014	2015	2016	
1	Bath & Wells	C	2,260	2,240	2,270	2,050	2,180	2,080	94%	1,500	1,470	1,630	1,350	1,460	1,370	93%
2	Birmingham	C	1,200	1,170	1,240	1,130	1,230	1,170	99%	2,690	2,770	2,830	2,360	2,270	2,140	100%
3	Blackburn	Y	2,390	2,210	2,280	2,040	2,060	1,970	78%	1,730	1,720	2,070	1,630	1,620	1,370	80%
5	Bristol	C	1,090	970	970	840	940	910	89%	1,080	1,010	770	850	770	740	91%
6	Canterbury	C	1,640	1,610	1,540	1,520	1,510	1,510	80%	2,290	1,930	1,850	1,770	1,710	1,600	90%
7	Carlisle	Y	1,840	1,780	1,770	1,740	1,810	1,700	87%	1,060	1,000	1,070	920	920	730	92%
8	Chelmsford	C	2,740	2,810	2,820	2,730	2,690	2,660	97%	3,760	3,640	3,270	2,890	3,020	2,820	99%
9	Chester	Y	3,410	3,360	3,410	3,150	3,250	3,030	72%	2,450	2,620	2,620	2,300	2,220	2,070	68%
10	Chichester	C	2,200	2,180	2,180	2,010	2,230	2,120	94%	2,470	2,350	2,320	1,960	2,060	2,120	96%
11	Coventry	C	1,560	1,590	1,620	1,470	1,570	1,380	99%	1,000	930	850	810	750	690	100%
12	Derby	C	2,240	2,380	2,250	2,180	2,270	2,200	87%	1,360	1,310	1,190	980	1,040	980	90%
13	Durham	Y	3,410	3,260	3,310	3,110	3,150	2,980	96%	1,920	1,910	1,950	1,820	1,830	1,730	97%
14	Ely	C	1,490	1,410	1,490	1,510	1,500	1,400	95%	880	870	880	860	890	770	98%
15	Exeter	C	2,640	2,720	2,680	2,560	2,570	2,500	94%	1,340	1,370	1,210	1,140	1,110	1,080	93%
16	Gloucester	C	1,800	1,960	1,830	1,820	1,840	1,830	94%	1,230	1,170	1,180	1,050	1,070	1,110	92%
17	Guildford	C	1,230	1,270	1,290	1,280	1,340	1,240	98%	1,820	1,710	1,670	1,300	1,360	1,400	98%
18	Hereford	C	1,350	1,310	1,450	1,180	1,340	1,270	99%	670	600	680	590	660	690	100%
19	Leicester	C	1,520	1,660	1,550	1,480	1,480	1,420	96%	1,040	1,120	1,050	890	820	760	100%
20	Lichfield	C	4,960	5,060	5,030	4,420	4,890	4,620	94%	3,850	3,830	3,590	3,440	3,360	3,300	88%
21	Lincoln	C	2,360	2,340	2,270	2,070	2,290	2,190	95%	1,560	1,810	1,420	1,410	1,610	1,520	97%
22	Liverpool	Y	3,170	3,150	3,280	3,100	3,120	2,970	88%	1,990	2,090	2,010	1,850	1,700	1,600	89%
23	London	C	1,450	1,440	1,490	1,430	1,520	1,420	97%	2,190	2,090	2,070	1,800	1,880	1,520	94%
24	Manchester	Y	2,270	2,200	2,280	2,040	2,090	1,950	90%	2,100	2,230	2,300	1,960	1,910	1,710	89%
25	Newcastle	Y	1,230	1,210	1,160	1,190	1,240	1,210	94%	1,300	1,280	1,290	1,290	1,290	1,120	86%
26	Norwich	C	2,250	2,220	2,330	2,210	2,290	2,140	81%	2,110	2,050	2,250	2,200	2,230	2,070	81%
27	Oxford	C	3,440	3,570	3,530	3,330	3,270	3,180	90%	2,930	2,940	2,590	2,410	2,410	2,200	92%
28	Peterborough	C	1,520	1,400	1,500	1,410	1,460	1,430	80%	760	790	850	840	780	730	86%
29	Portsmouth	C	1,150	1,130	1,220	1,060	1,080	1,050	100%	1,350	1,330	1,320	1,280	1,230	1,100	100%
31	Rochester	C	1,450	1,380	1,370	1,330	1,410	1,320	70%	3,280	3,170	2,760	2,560	2,550	2,180	74%
32	St. Albans	C	2,450	2,420	2,230	2,180	2,380	2,230	94%	2,400	2,400	2,120	2,150	2,120	1,910	94%
33	St. Edms & Ipswich	C	1,800	1,740	1,710	1,640	1,660	1,610	97%	930	1,000	950	940	880	770	97%
34	Salisbury	C	2,100	2,190	2,410	2,090	2,270	2,130	90%	1,560	1,480	1,520	1,270	1,290	1,140	91%
35	Sheffield	Y	2,280	2,150	2,340	2,140	2,130	2,020	95%	2,020	2,050	1,810	1,580	1,370	1,180	94%
36	Sodor & Man	Y	280	230	230	250	300	260	100%	110	140	150	140	140	190	100%
37	Southwark	C	1,250	1,200	1,250	1,170	1,220	1,210	81%	2,860	2,670	2,610	2,240	2,200	2,110	79%
38	Southwell & Nottingham	Y	2,140	2,270	2,130	2,110	2,080	1,970	97%	1,810	1,580	1,660	1,630	1,440	1,180	97%
39	Truro	C	1,540	1,510	1,550	1,340	1,430	1,380	76%	650	560	660	630	570	580	73%
41	Winchester	C	1,760	1,690	1,900	1,760	1,830	1,620	97%	1,520	1,370	1,630	1,440	1,450	1,180	97%
42	Worcester	C	1,720	1,670	1,710	1,590	1,670	1,490	100%	1,500	1,540	1,820	1,470	1,280	1,390	100%
43	York	Y	2,980	2,900	2,910	2,730	2,940	2,860	79%	2,190	2,010	2,150	1,850	1,760	1,740	84%
44	Europe	C	230	270	190	240	200	200	98%	550	490	410	440	460	420	99%
46	Leeds	Y	4,260	4,130	4,100	3,970	4,000	3,600	94%	3,240	3,170	3,360	2,990	2,970	2,490	95%
	Church of England		86,050	85,340	86,040	80,590	83,700	79,410	91%	75,070	73,550	72,340	65,260	64,460	59,490	91%

Notes: Values include all funerals conducted on behalf of a church/parish by any minister.

Values shown include data as reported by churches/parishes and estimates where no report has been returned.

Table 17: Diocesan infant baptisms and funerals as a percentage of births and deaths, 2016

Ref. no.	Diocese	Province	Births	Infant baptisms & thanksgivings	%	Deaths	Funerals in churches, crematoria, & cemeteries	%
1	Bath & Wells	C	9,670	1,410	15%	10,050	3,450	34%
2	Birmingham	C	22,460	1,180	5%	12,670	3,300	26%
3	Blackburn	Y	15,650	2,210	14%	13,760	3,350	24%
5	Bristol	C	13,110	940	7%	7,980	1,660	21%
6	Canterbury	C	12,030	1,670	14%	11,010	3,120	28%
7	Carlisle	Y	4,790	1,420	30%	5,410	2,430	45%
8	Chelmsford	C	44,470	2,240	5%	25,260	5,480	22%
9	Chester	Y	18,210	2,690	15%	16,370	5,090	31%
10	Chichester	C	16,980	1,710	10%	17,420	4,240	24%
11	Coventry	C	10,190	920	9%	7,680	2,060	27%
12	Derby	C	11,240	1,370	12%	10,360	3,180	31%
13	Durham	Y	16,040	3,170	20%	15,670	4,710	30%
14	Ely	C	9,030	1,050	12%	6,410	2,170	34%
15	Exeter	C	11,640	1,490	13%	13,090	3,580	27%
16	Gloucester	C	7,220	1,260	17%	6,440	2,950	46%
17	Guildford	C	12,130	1,330	11%	8,610	2,640	31%
18	Hereford	C	3,060	840	27%	3,530	1,960	55%
19	Leicester	C	12,390	830	7%	8,700	2,180	25%
20	Lichfield	C	25,080	3,140	13%	20,780	7,920	38%
21	Lincoln	C	11,450	2,410	21%	11,270	3,710	33%
22	Liverpool	Y	18,200	2,240	12%	15,990	4,570	29%
23	London	C	61,300	2,040	3%	22,430	2,940	13%
24	Manchester	Y	29,670	2,710	9%	18,290	3,660	20%
25	Newcastle	Y	8,570	1,420	17%	8,210	2,330	28%
26	Norwich	C	9,180	1,130	12%	9,980	4,210	42%
27	Oxford	C	29,710	3,010	10%	17,220	5,380	31%
28	Peterborough	C	11,660	1,020	9%	7,500	2,160	29%
29	Portsmouth	C	8,210	890	11%	7,700	2,140	28%
31	Rochester	C	16,760	1,480	9%	11,000	3,500	32%
32	St. Albans	C	24,910	1,780	7%	14,610	4,140	28%
33	St. Edms & Ipswich	C	7,340	810	11%	6,440	2,370	37%
34	Salisbury	C	9,250	1,490	16%	10,070	3,270	32%
35	Sheffield	Y	14,810	1,940	13%	12,040	3,190	27%
36	Sodor & Man	Y	1,010	120	12%	880	450	52%
37	Southwark	C	41,780	2,040	5%	16,480	3,320	20%
38	Southwell & Nottingham	Y	13,160	1,220	9%	10,360	3,150	30%
39	Truro	C	5,400	850	16%	6,120	1,970	32%
41	Winchester	C	13,530	1,770	13%	11,110	2,800	25%
42	Worcester	C	9,760	1,360	14%	8,650	2,890	33%
43	York	Y	15,340	2,770	18%	14,860	4,600	31%
46	Leeds	Y	34,390	3,530	10%	24,360	6,090	25%
	Church of England		670,800	68,880	10%	486,740	138,280	28%

Table 17 shows the percentage of live births for which there was an infant baptism/thanksgiving in 2016 and the percentage of deaths for which there was a funeral. Whilst Table 17 shows figures for infant baptisms and thanksgivings, as has already been shown (Table 14) a large number of child and mature baptisms also take place. Official statistics on the number of marriages are not available at a spatial scale that permits a similar exercise.

Notes: Totals do not include the Diocese in Europe.

Numbers of live births and deaths are calculated using estimates from the ONS, mapped onto diocesan boundaries.

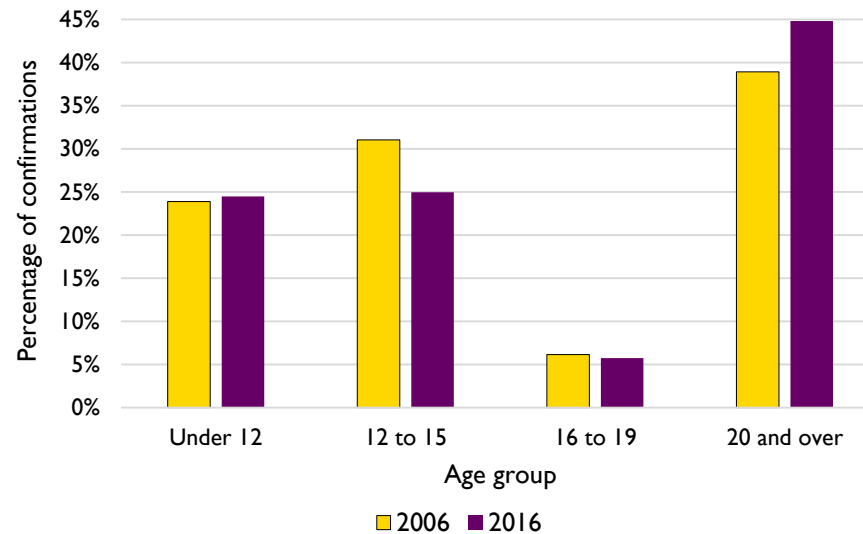
Table 18: Diocesan confirmations by gender, 2016

Ref. no.	Diocese	Province	Confirmations			Number of services
			Male	Female	Total	
1	Bath & Wells	C	119	163	282	53
2	Birmingham	C	136	157	293	58
3	Blackburn	Y	318	468	786	68
5	Bristol	C	68	82	150	13
6	Canterbury	C	135	200	335	34
7	Carlisle	Y	64	120	184	37
8	Chelmsford	C	276	470	746	58
9	Chester	Y	225	394	619	95
10	Chichester	C	165	228	393	32
11	Coventry	C	76	104	180	14
12	Derby	C	47	117	164	39
13	Durham	Y	158	233	391	27
14	Ely	C	52	117	169	21
15	Exeter	C	117	176	293	42
16	Gloucester	C	54	77	131	18
17	Guildford	C	198	254	452	40
18	Hereford	C	41	64	105	22
19	Leicester	C	76	113	189	27
20	Lichfield	C	244	346	590	79
21	Lincoln	C	60	131	191	18
22	Liverpool	Y	251	324	575	41
23	London	C	579	791	1,370	179
24	Manchester	Y	315	380	695	50
25	Newcastle	Y	67	125	192	35
26	Norwich	C	94	124	218	45
27	Oxford	C	487	500	987	88
28	Peterborough	C	176	232	408	74
29	Portsmouth	C	52	75	127	13
31	Rochester	C	241	291	532	54
32	St. Albans	C	225	323	548	134
33	St. Edms & Ipswich	C	50	79	129	23
34	Salisbury	C	213	339	552	38
35	Sheffield	Y	78	189	267	55
36	Sodor & Man	Y	11	4	15	7
37	Southwark	C	287	422	709	63
38	Southwell & Nottingham	Y	139	188	327	15
39	Truro	C	48	79	127	15
41	Winchester	C	91	91	182	21
42	Worcester	C	75	120	195	28
43	York	Y	117	198	315	58
44	Europe	C	115	115	230	34
46	Leeds	Y	241	333	574	86
Church of England			6,581	9,336	15,917	1,951

15,900 people were confirmed in 2016, at 1,950 confirmation services.

Of those people confirmed in 2016, 59% were female. Since 2006, the annual number of confirmations has fallen from 29,380 to 15,900. There has been a slight shift towards a greater proportion of those confirmed being aged over 20, from 39% of confirmations in 2006 to 45% in 2016 (Figure 16).

Figure 16: Age distribution of confirmations, 2006 and 2016



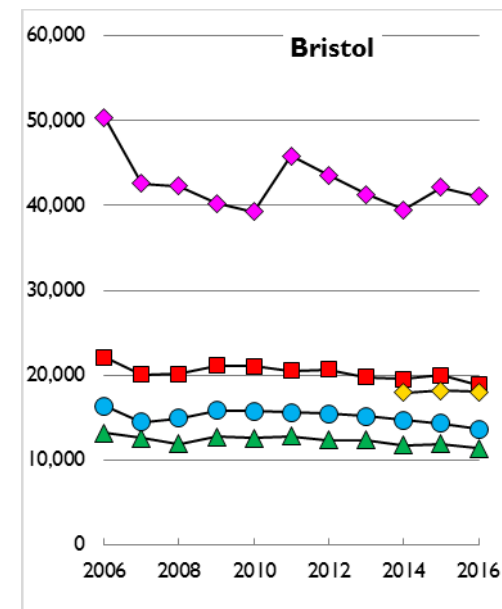
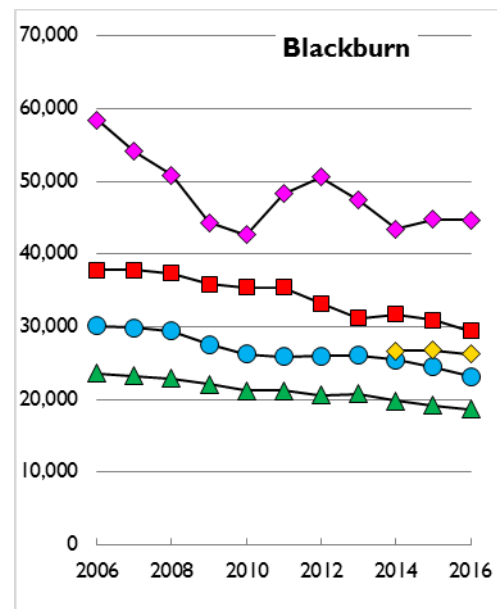
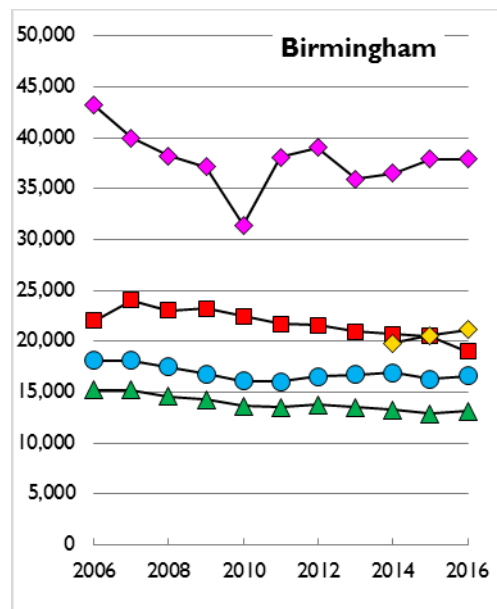
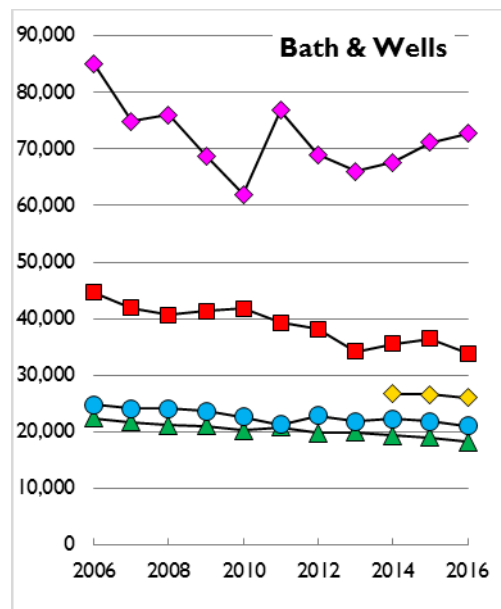
Notes: This table shows exact figures, as reported by dioceses.

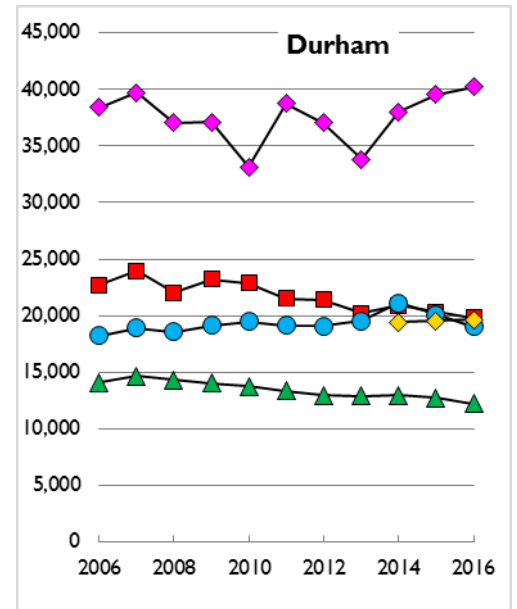
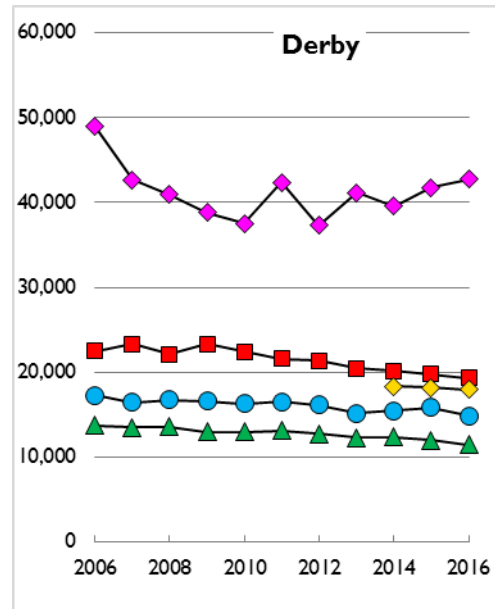
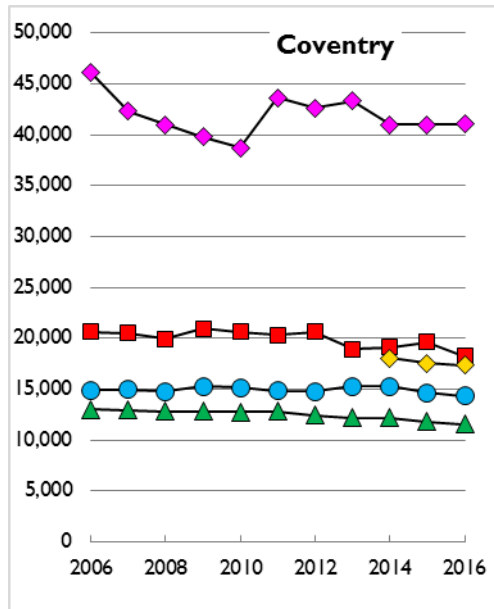
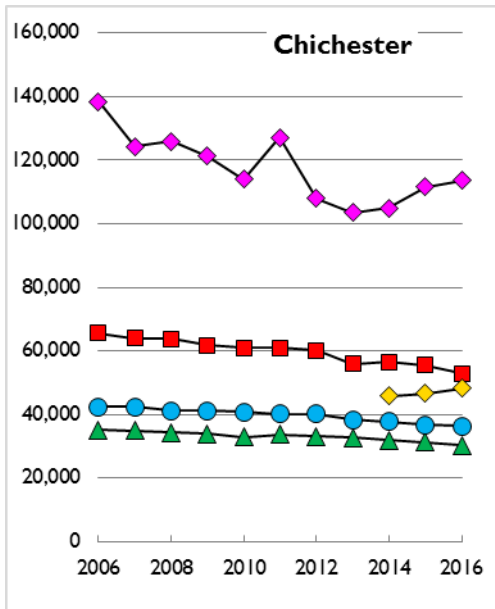
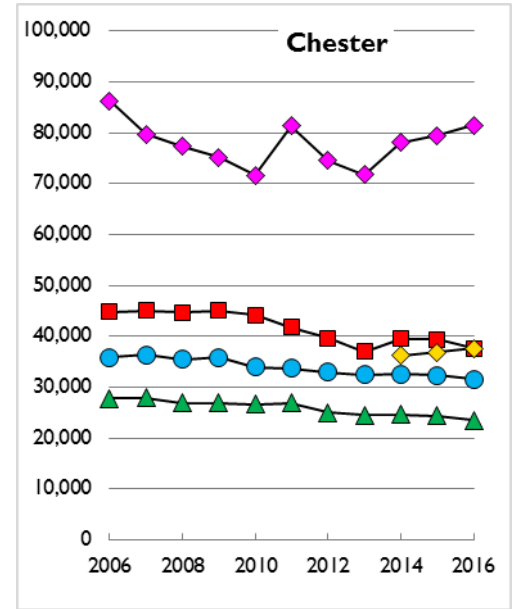
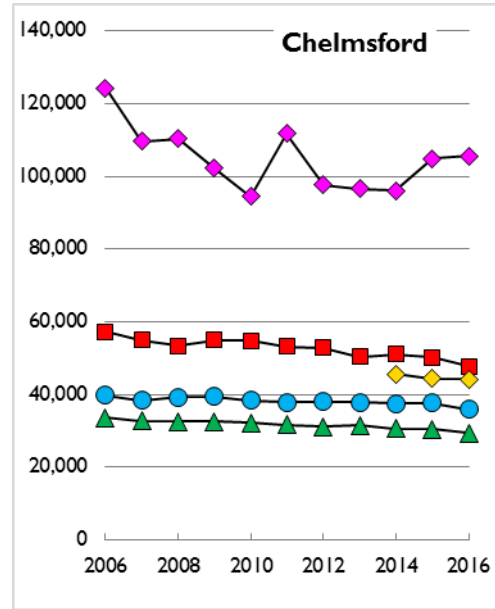
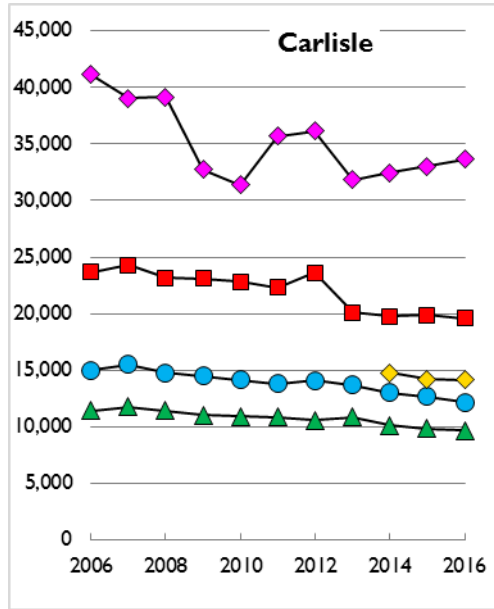
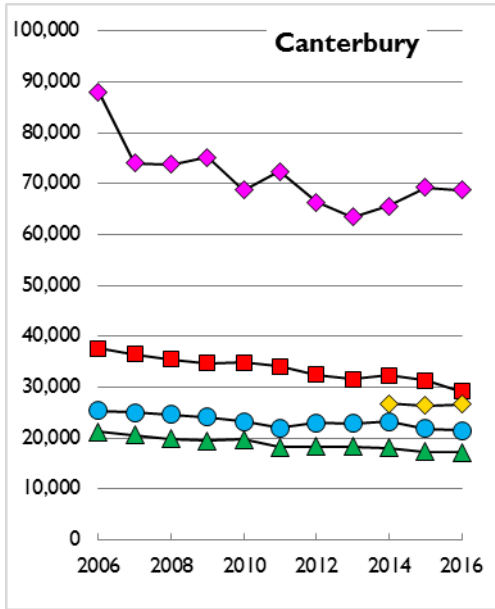
No figures were received from the Dioceses of Leicester, Lincoln, or Oxford in 2016: for these dioceses, 2015 figures are shown. No figures were received from the Diocese of Rochester in 2016 or 2015; for this diocese, 2014 figures are shown.

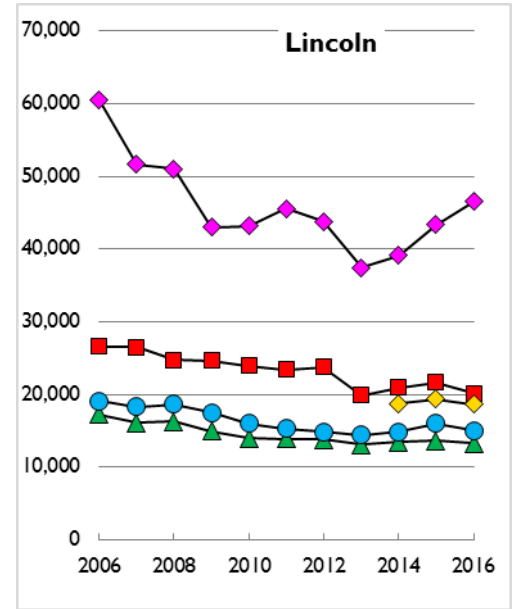
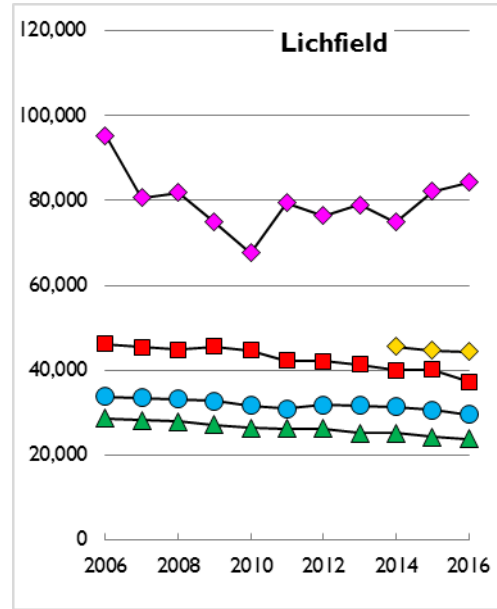
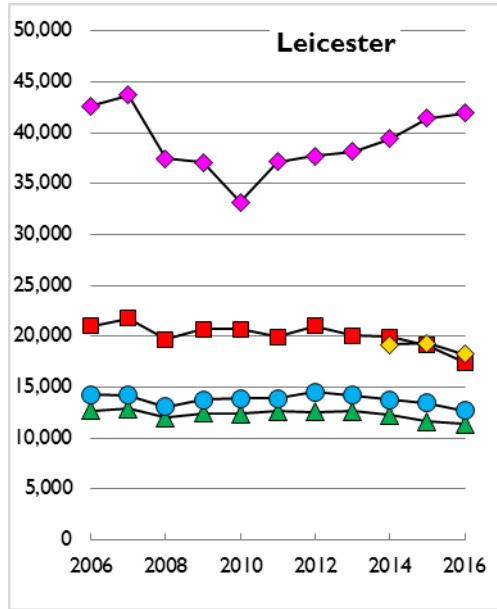
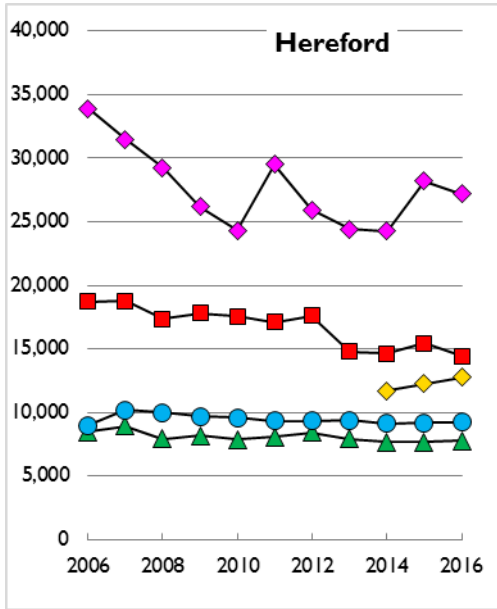
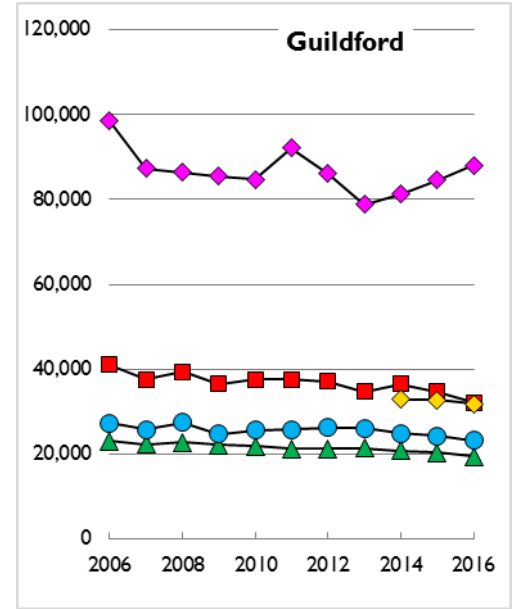
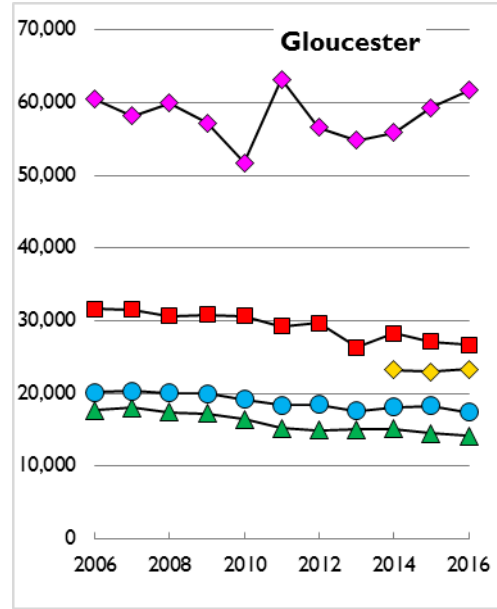
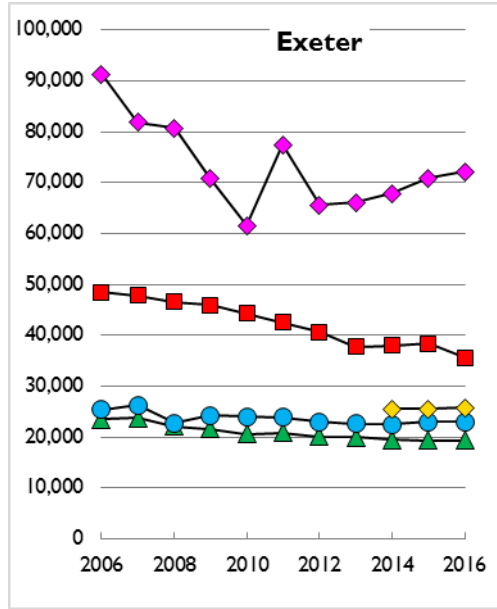
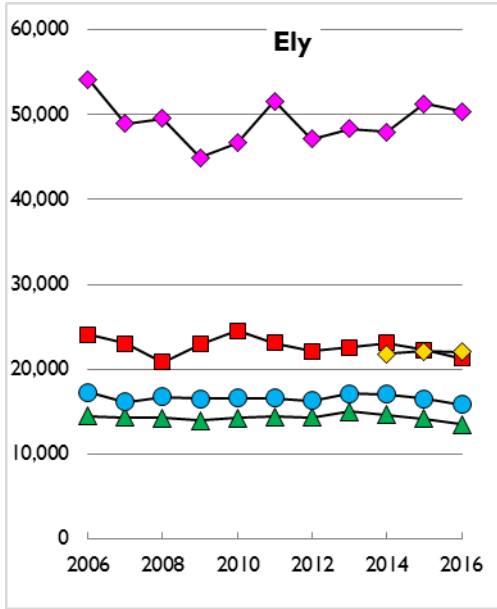
Diocesan summary of participation, 2006-2016

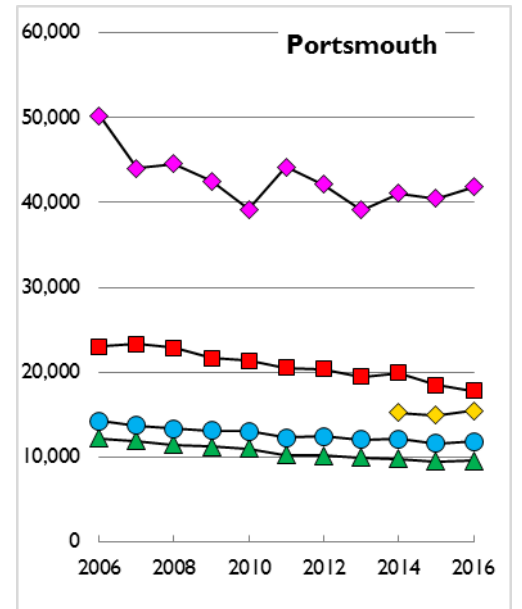
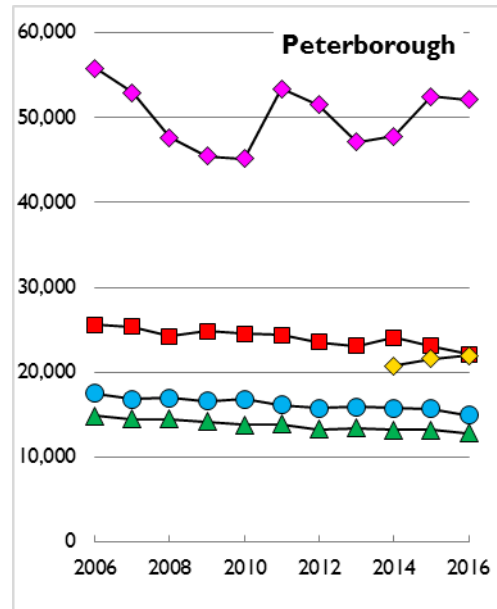
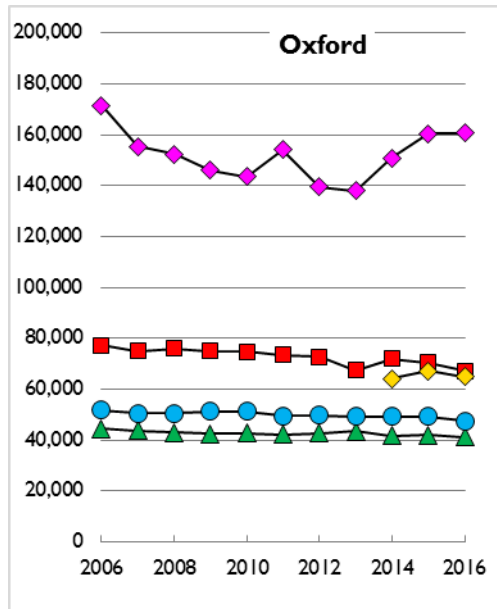
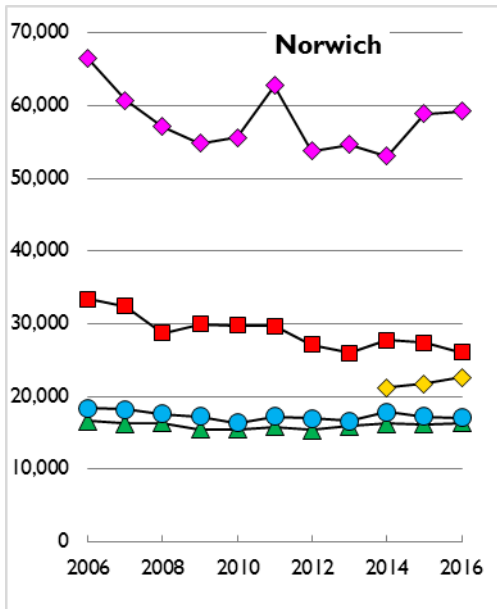
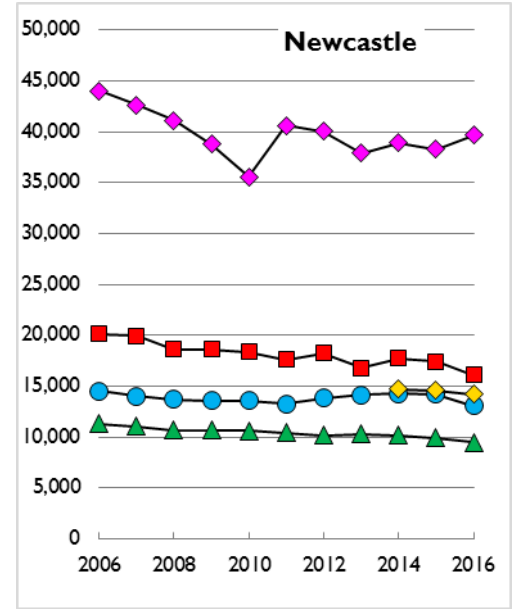
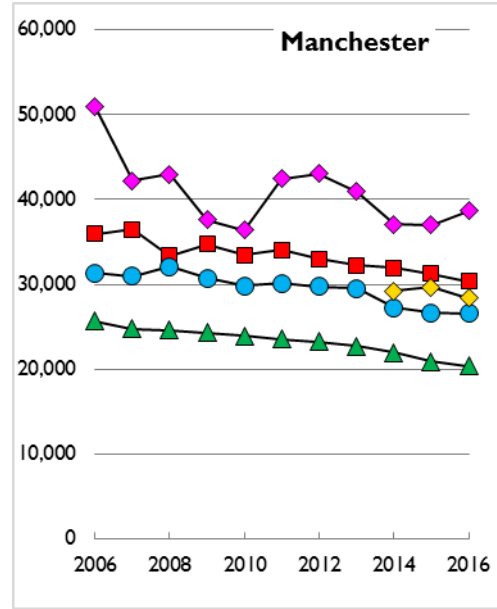
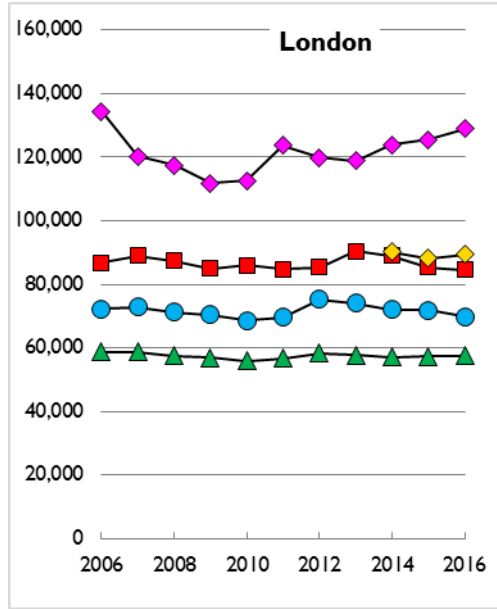
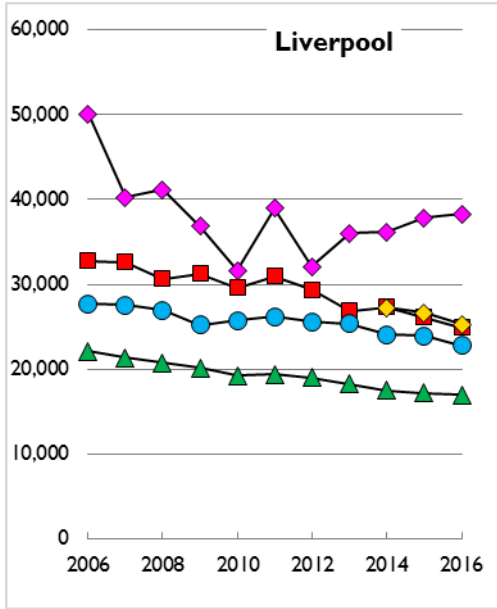
The graphs below show the levels of participation as measured by Adult average weekly attendance plus Child average Sunday attendance (based on the October count), Usual Sunday attendance, Christmas attendance, and Easter attendance within each diocese from 2006-2016. Worshipping community figures are shown from 2014-2016. Most dioceses display the same general pattern of a gradual decrease in participation, although there is some variation between dioceses. Christmas attendance, as has been noted above, can be seen to be more variable from year to year than other measures.

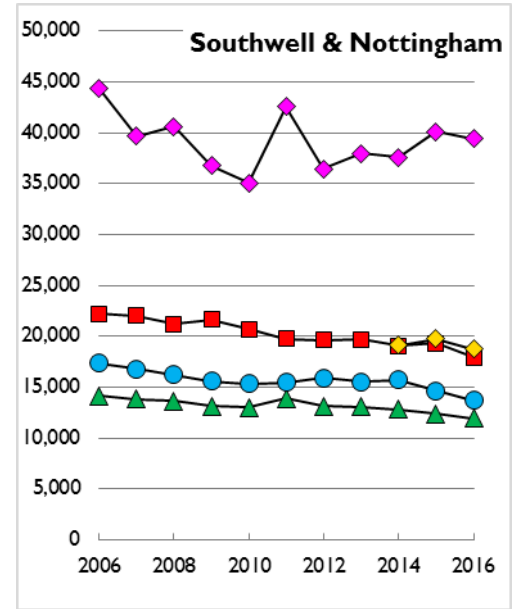
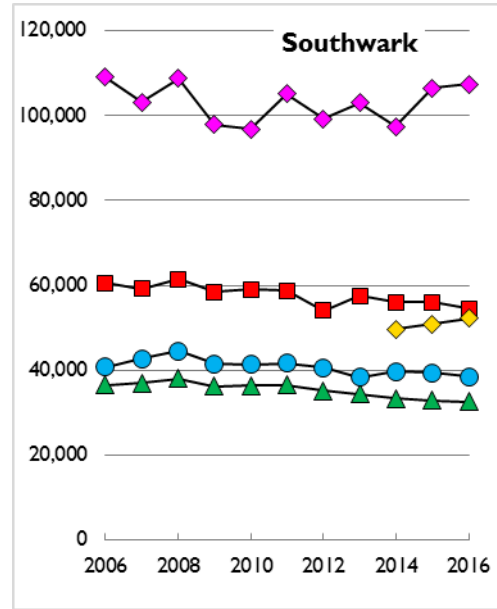
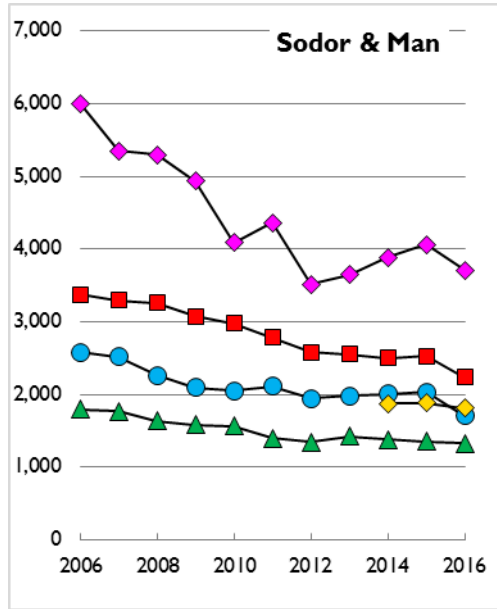
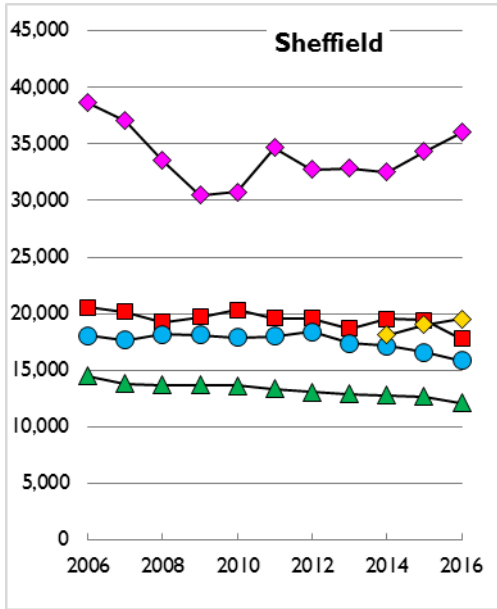
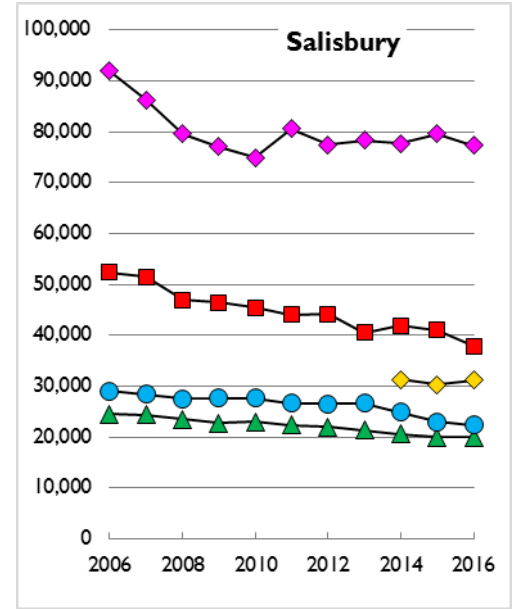
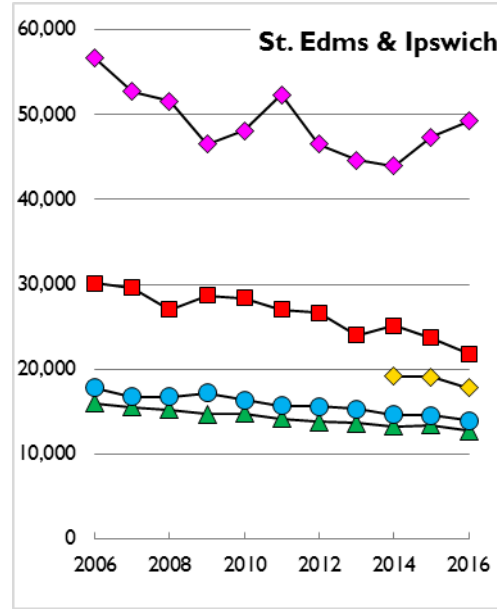
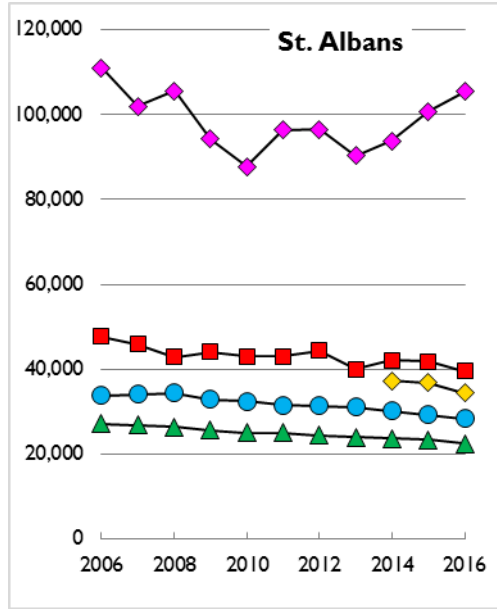
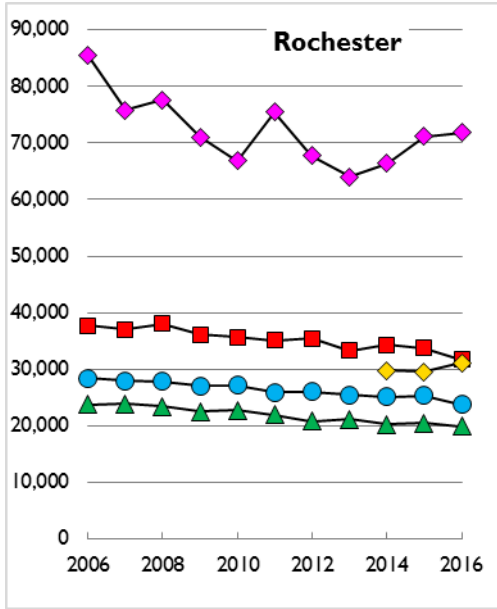
◆ Christmas attendance ■ Easter attendance ▲ Usual Sunday attendance ● Average Adult weekly plus Child Sunday attendance ◆ Worshipping Community

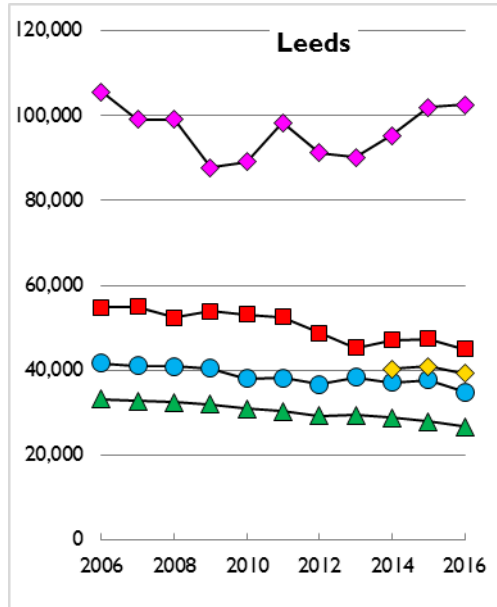
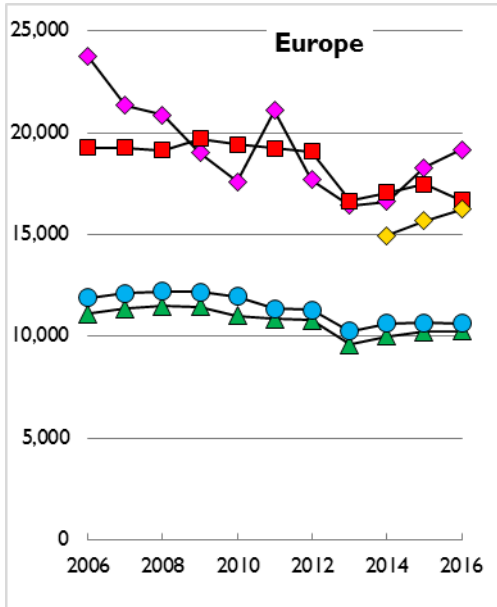
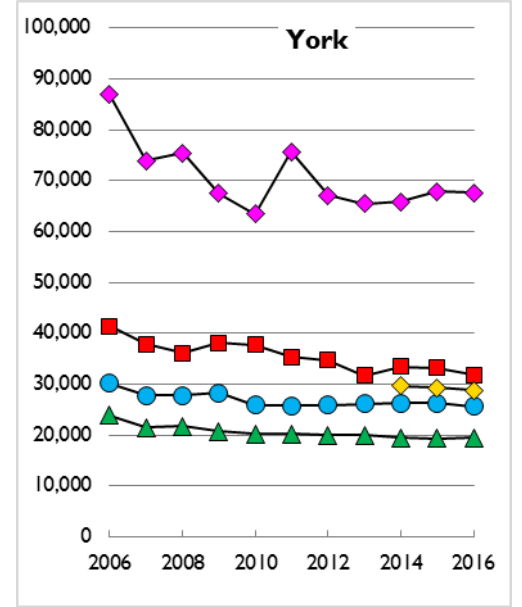
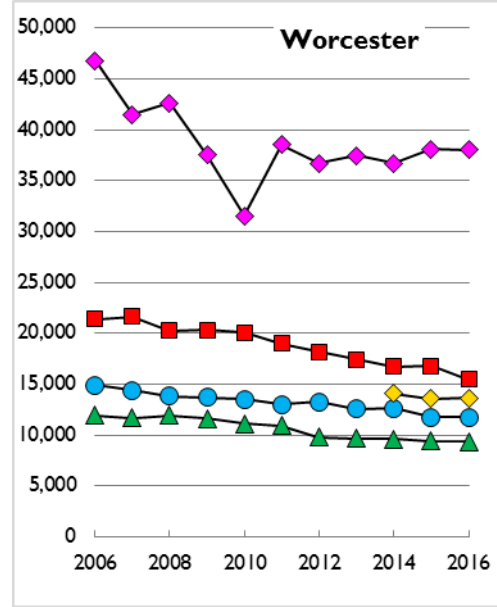
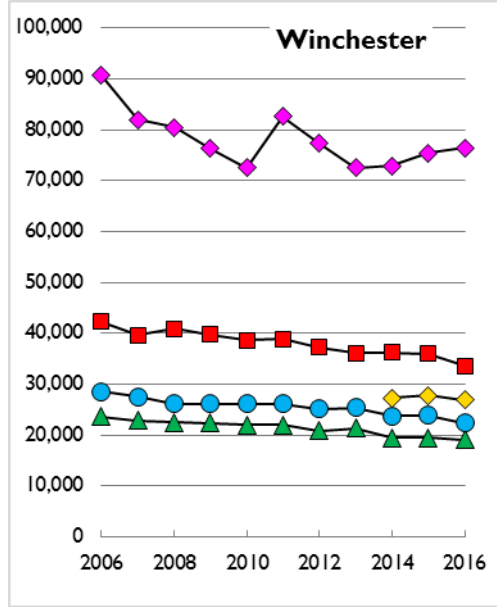
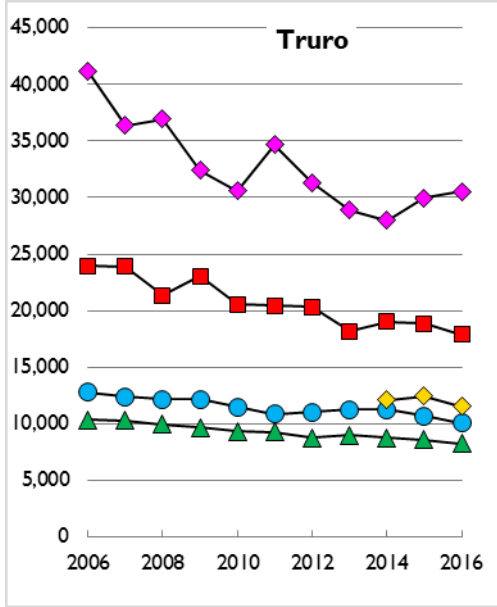












Methodology

This report uses data submitted through annual Statistics for Mission returns from churches, and from government statistics. The majority (88%) of the Church of England's almost 16,000 churches submitted complete data (up from 86% in 2015). Most returns were on behalf of a single church; a small fraction of returns were joint returns submitted on behalf of several churches. Most returns were submitted through the online parish returns system (<https://parishreturns.churchofengland.org/>). A small number of dioceses used different electronic systems, and some churches completed paper forms.

In most fields, diocesan figures include figures from cathedrals, reported through separate Cathedral Statistics returns (<https://www.churchofengland.org/about-us/facts-stats/research-statistics/cathedral-statistics.aspx>). In some fields - attendance at services for schools and Advent attendance - differences between the questions asked mean that it has not been possible to include cathedral attendance in diocesan figures.

The content of Statistics for Mission

The annual Statistics for Mission return measures several different aspects of church life. While no study could cover every facet of the ministry and service of the Church of England, Statistics for Mission seeks to provide a broad picture of those key elements that are common to the vast majority of churches. For reference, the 2016 Statistics for Mission form, including all questions and explanatory notes, can be found at the end of this report.

A large part of Statistics for Mission is concerned with attendance at worship services. Attendance is measured in a number of different ways:

- 1) Worshipping Community: any person attending the church regularly, for example at least once a month (or those who would attend if not prevented by illness, infirmity, or temporary absence), including attendance at church services and fresh expressions of Church;
- 2) October count: the number of adults and children attending during each of the first 4 weeks of October 2016, at church services, fresh expressions of Church, and services for schools held in churches. Sunday and weekday attendance is asked about, with the instruction that those attending on Sunday and during the week in any given week should only be counted once that week (on Sunday) if possible;
- 3) Usual Sunday attendance, on Sundays when there is a service (adults and children);
- 4) Number of people attending and number of people taking communion at Easter (including vigil services on Easter Eve);
- 5) Number of people attending and number of people taking communion at Christmas (Christmas Eve and Christmas Day);
- 6) The electoral roll of the church.

Churches are asked to report the age distribution of their Worshipping Community and the numbers of adults and children leaving and joining their Worshipping Community, including estimating the numbers of people leaving and joining for different reasons.

The October count data are used to calculate average weekly and average Sunday attendance, for adults and children. Average Sunday attendance is defined as the total number of reported attendances at church services or fresh expressions of Church on Sundays over the 4 weeks of the October count, divided by 4. Average weekly attendance is defined as the total number of reported attendances at church services or fresh expressions of Church on Sundays or weekdays over the 4 weeks of the October count, divided by 4. Attendance at services for schools taking place in the church or church buildings is not included in the average attendance figures, and is instead reported separately. Churches are asked to include attendance at baptisms in their October count, since baptisms often take place as part of regular worship, but not attendance at weddings and funerals.

Statistics for Mission quantifies numbers of baptisms and services of thanksgiving for the gift (birth or adoption) of a child; marriages and services of prayer and dedication after civil marriages; and funeral services conducted on behalf of the church/parish by any minister held in church or at a crematorium or cemetery (excluding committal only and burial of ashes only). Note that funerals conducted by licensed Church of England ministers that are not held on behalf of a church/parish may not be included in the reported figures.

Additionally, Statistics for Mission asks about attendance at special services during Advent; members of ministry teams leading assemblies in schools; details about fresh expressions of Church; and (in 2016) visitors to churches.

Data accuracy and data checking

Data reported by each church were compared with figures from previous years, and substantial changes were queried with churches and/or dioceses. Predominantly, these checks corrected typographical errors during data entry, although they also highlighted occasions when questions had been misinterpreted. The first stage of checks was automatic, at the point of data entry, for those returns submitted through the online parish returns system. Further checking was carried out by staff in the Research and Statistics unit, with particular scrutiny of figures that had changed significantly from year to year, and of unusually large (or small) values. Useful additional explanation and information was often provided by churches in the comments boxes on the Statistics for Mission return; all comments were read and acted on where appropriate. Where it was necessary to query any of the figures submitted, in the vast majority of cases this was done directly with the person who entered the data, rather than the previous slow and circuitous route via diocesan offices.

Draft figures and estimates were circulated to dioceses in July 2017, giving dioceses an opportunity to further scrutinise their figures. The Research and Statistics unit discussed these draft figures with the vast majority of dioceses during summer 2017. Further queries were followed up, and a small number of additional late returns included in the final dataset.

As usual, particular efforts were made to include figures from new worshipping communities in Statistics for Mission 2016. These include new churches, church plants, fresh expressions of Church, and congregations with Bishops' Mission Orders. Colleagues in diocesan offices assisted in ensuring that the 2016 dataset is more complete than it has been in previous years. However, it is likely that returns were not received from all new worshipping communities, and as others are founded this exercise will continue in future years.

Where data were missing in 2015, 2016 submissions were used to improve previously-published estimates. Late returns from 2015, received after Statistics for Mission 2016 was published, have been included. Where we have identified or been notified of historical inaccuracies in the data, these have been corrected. The figures contained in this report should therefore be taken to supersede all previously published figures.

Values in the data tables are reported to the nearest 100 or nearest 10, as appropriate. Percentages are reported to the nearest 1% or 0.1%, as appropriate. Missing data are indicated with a dash (-). Totals, percentages, and averages have been calculated before rounding, so row and column totals may not always agree with the sums of the stated amounts.

Estimation

For those churches that did not submit a return, we used data from that church from other years to estimate the missing values. Data from 2012-2015 were used to estimate missing 2016 figures, assuming that past trends will be continued but at a slower pace. Non-integer attendance figures have been rounded down to the nearest whole number. Estimation calculations were carried out in R version 3.2.1.

If no return was received from a church, and there was no indication that data were included in a return from another church, we estimated values for that church. If a partial return was received and there was no indication that the church was closed for all or part of the year, we estimated those values that were missing; partial returns were considered section by section: October count attendance; usual Sunday attendance; Easter attendance; Christmas attendance; baptisms, marriages, and funerals. If any data were submitted in a given section, any missing values in that section were treated as zeros. If no data were submitted in a section, values for that section were estimated.

When no return has been received from a church for more than 5 years, missing values were treated as zeros.

Information about Worshipping Communities has only been collected since 2012, with variable reliability for the first few years, so there are insufficient data on which to base church-level estimation. Diocesan Worshipping Community totals were calculated by scaling up the reported Worshipping Community by comparing the all age Usual Sunday attendance of those churches within the diocese that did report Worshipping Community figures with the all age Usual Sunday attendance for the whole diocese.

Figures for attendance at school services in churches (on Sundays and weekdays), and attendance at special services held in Advent were not estimated where missing. These fields are recent inclusions in Statistics for Mission and therefore there is insufficient evidence on which to base estimates. Similarly, no estimation was carried out for numbers of joiners and leavers of Worshipping Communities. For these fields, figures shown in this report are as reported by churches/parishes.

Completeness of reported figures

As Table 3 shows, complete returns (i.e. those for which no estimation was carried out) were received from 88% of all Church of England churches in 2016. In some cases, those churches that did not submit data are large, in other cases small. To indicate the impact of estimation, where it has taken place, we have reported a “completeness” score – this is the percentage of the total value that consists of reported data, with the rest being estimated. For example, if Diocese A is shown to have 1,000 marriages with a completeness of 90%, this means that churches in Diocese A reported 900 marriages and those churches that did not submit a report were estimated to have carried out 100 marriages. The higher the completeness score the more likely it is that the totals are not being skewed by any estimation that has been carried out.

Age groups

Ideally, a single set of age groups would be used throughout the Statistics for Mission return. However, for a variety of reasons, this has not been the case in the past, and the desire to be able to make comparisons with historical data has discouraged further changes.

- Usual Sunday attendance and October count attendance are divided into adults (aged 16 and over) and children (aged under 16).
- Worshipping Community age groups are 0-10; 11-17; 18-69, and 70+, while Worshipping Community leavers and joiners are categorised as adults (aged 18+) and children.
- Baptisms and thanksgivings are categorised as infants (aged <1 year); children aged 1-4 years; children aged 5-12 years; and youths/adults (aged 13+).

Year to year comparisons

Some questions, such as the usual Sunday attendance, have been asked in almost the same form for many years. Others have changed, to reflect changes in patterns of church services or the evolving interests of those using the data. Any changes, although they may provide useful information, make it difficult to compare figures from year to year. For example, in 2013 a question about attendance at school services during October was introduced; previously, it is likely that some, but not all, such attendance was recorded during the October count. In 2014 new guidance specified that only attendance at school services “taking place in church or church buildings” should be included and that school assemblies should not be included if they took place in school. While this clarification resulted in a more logical question, it means that it is not sensible to make direct comparisons of average weekly attendance values (with or without

including school service attendance) from before and after 2012. Since the majority of attendance at school services is of children on weekdays, in this report trends in the October count figures are assessed using average Adult weekly attendance plus average Child Sunday attendance (both derived from the October count data, and in both cases including attendance at church and fresh expressions of Church, but not including attendance at services for schools) since these are likely to be relatively unaffected by the change in the question.

Parish-level trends

Figures for all churches within a parish were aggregated to produce parish-level attendance figures from 2006-2016. A simple linear regression model was used to evaluate for each parish whether there had been a statistically significant change in attendance over time. Where the model-generated coefficient of time was positive with a p-value less than 0.05, this is described as statistically significant growth. Where the model-generated coefficient of time was negative, with a p-value less than 0.05, this is described as statistically significant decline. Otherwise, there is no statistically significant growth or decline. To avoid misleading conclusions caused by the opening or closing of churches, only those parishes for which data were submitted in 2006 or 2007 and in 2015 or 2016 were included in this analysis. Note that “statistically significant” describes the confidence with which we describe a parish as growing or declining, and is not a judgement about whether the amount of growth or decline is noteworthy. For example, a parish with an attendance in 2006 of 400 people whose reported attendance increased by one person each year until 2016 would have growth that is statistically significant – i.e. we are confident that it is growing; whether a change from 400 to 410 over 10 years is important is a matter of opinion, not statistics.

Diocesan boundaries

Diocesan and parish boundaries as of 1st January 2016 were used as the basis for the collection of Statistics for Mission data. Parish reorganisations take place frequently, with more than one hundred changes to parish boundaries each year. In April 2014 the Dioceses of Bradford, Ripon & Leeds, and Wakefield were combined to create the Diocese of Leeds, and this new structure appeared in this report for the first time in 2015. To allow trends over time to be considered, figures have been reported as though this structure were in place in previous years.

Figures for the Channel Islands are included in the Diocese of Canterbury, since episcopal oversight of the Channel Islands is being exercised by the Bishop of Dover. To allow meaningful assessment of trends, Channel Island figures are likewise included in the Diocese of Canterbury for previous years.

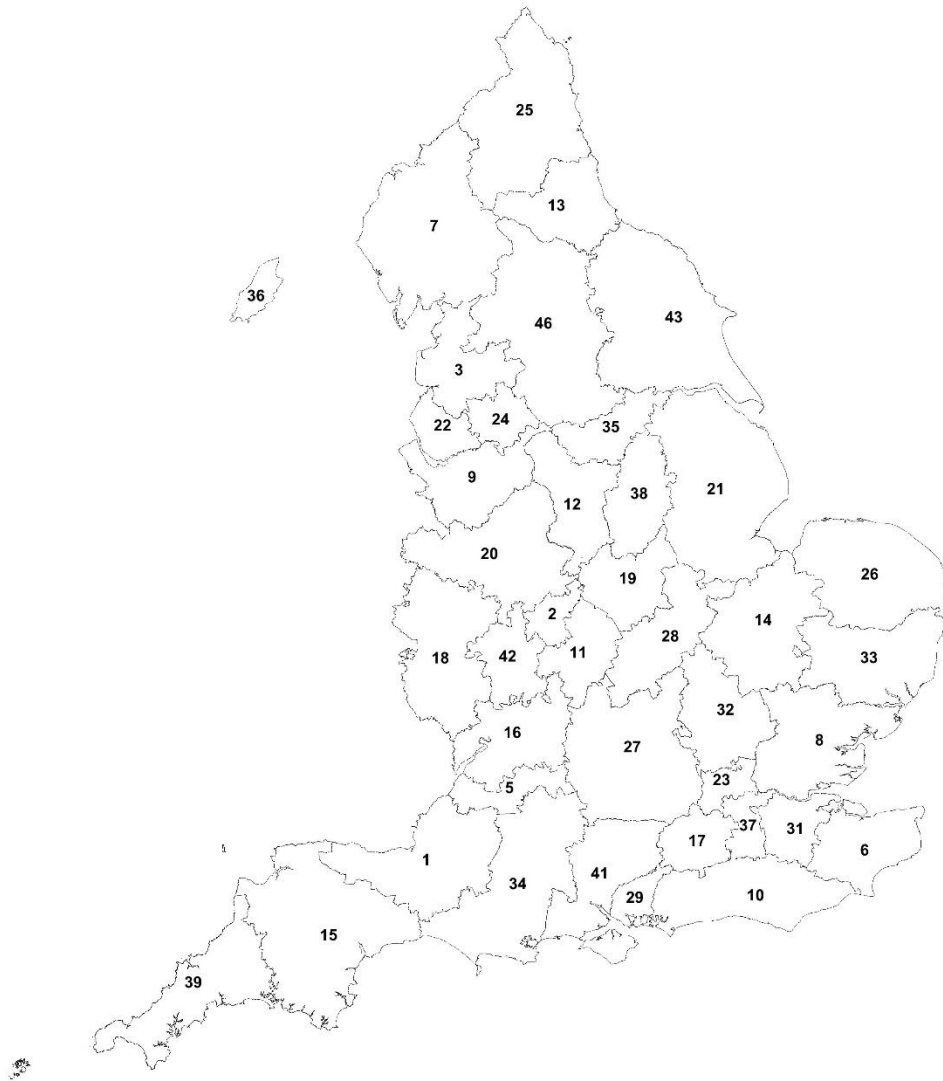
Population data

Diocesan population statistics have been estimated using data published by the Office for National Statistics (ONS: <http://www.ons.gov.uk/ons/index.html>), mapped on to diocesan boundaries. This mapping is an approximation, since the boundaries of regions at which population data are reported do not coincide with diocesan boundaries. The latest available data have been used wherever possible; population estimates and numbers of births and deaths are from mid-2016; religious affiliation data (specifically, percentage Christian) are from the 2011 census. Data for the Isle of Man have been taken from http://countrymeters.info/en/Isle_of_Man; data for the Channel Islands have been taken from http://countrymeters.info/en/Channel_Islands. These sources do not include information about religious affiliation – in the case of the Channel Islands this has been estimated to be the same as that in the rest of the Diocese of Canterbury.

Further information

Any reader who would like further details regarding the methodology behind this report is encouraged to get in touch: please see the contact details on page 1.


Reference map of dioceses, 2016



Ref. no.	Diocese	Province
1	Bath & Wells	C
2	Birmingham	C
3	Blackburn	Y
5	Bristol	C
6	Canterbury	C
7	Carlisle	Y
8	Chelmsford	C
9	Chester	Y
10	Chichester	C
11	Coventry	C
12	Derby	C
13	Durham	Y
14	Ely	C
15	Exeter	C
16	Gloucester	C
17	Guildford	C
18	Hereford	C
19	Leicester	C
20	Lichfield	C
21	Lincoln	C
22	Liverpool	Y
23	London	C
24	Manchester	Y
25	Newcastle	Y
26	Norwich	C
27	Oxford	C
28	Peterborough	C
29	Portsmouth	C
31	Rochester	C
32	St. Albans	C
33	St. Edms & Ipswich	C
34	Salisbury	C
35	Sheffield	Y
36	Sodor & Man	Y
37	Southwark	C
38	Southwell & Nottingham	Y
39	Truro	C
41	Winchester	C
42	Worcester	C
43	York	Y
46	Leeds	Y

Note: The diocesan boundaries reflect the situation as of 1st January 2016 to match the structure on which data have been collected.

Statistics for Mission form, 2016

 STATISTICS FOR MISSION: JANUARY TO DECEMBER 2016	
Church name:	Parish name:
Deanery:	Diocese:

REMINDER: PLEASE COMPLETE THIS FORM ONLINE IF POSSIBLE

<http://parishreturns.churchofengland.org/>

The online returns system has existing information about your church already saved. It automatically checks for typographical errors and minor mistakes and gives you the opportunity to revise your figures before final submission. You can see the data for your church over time and download copies for your records.

- ✓ Please complete this form for your **CHURCH**. If there is more than one church in your parish, then please complete and submit a separate form for each church
- ✓ Where activities – e.g. acts of worship in schools; conducting funeral services at crematoria - are shared between more than one church then please attempt, where possible, to ensure that they are only reported once
- ✓ Questions 1a and 1b about the **Electoral Roll** refer to the **ecclesiastical electoral roll**. Question 1a asks about the ecclesiastical electoral roll for your **parish**. Question 1b is optional and only applies if you are in a multi-church parish AND keep a separate roll for your church
- ✓ **Fresh expressions of Church** should be included in your numbers, unless they prefer to complete a separate return. For help in identifying fresh expressions of Church please visit <http://www.freshexpressions.org.uk> or use the "Choice tree" at the end of this form
- ✓ Please complete all questions as far as possible, using "0" or "unknown" or "no services" if necessary. Unless otherwise indicated, empty fields will be treated as incomplete and may be queried later as missing data
- ✓ In rare circumstances where a single congregation worships evenly between a number of churches (i.e. there is no difference in who attends and how often at each church), a single return may be submitted. The churches included in the return should be noted below

A single return is submitted on behalf of (please list all included churches here, with church codes if known):

1a. How many people were on the ecclesiastical electoral roll for your parish, as reported at your Annual Parochial Church meeting in 2016?

✓ Please write "unknown" if the figure is not available

1a. Number on the ecclesiastical Electoral Roll for your PARISH	
---	--

If your parish has more than one church and also keeps a separate roll for your church, please also provide the total electoral roll for your church.

✓ Please write "N/A" if this is not applicable to your church

1b. How many people are on your church Electoral Roll?

1b. Number on the CHURCH Electoral Roll	
---	--

The next question is about church attendance on a **"USUAL" SUNDAY**

- ✓ A usual Sunday is one that is not a major festival or contained in a peak holiday period
- ✓ Wherever possible, please do not count the same person multiple times – if someone attends more than once on a usual Sunday, please only count them once
- ✓ Only think about the Sundays when you hold at least one service (ignore the Sundays when you do not hold a service at your church)

2. How many people attend your church on a usual Sunday, when there is a service?

2a. Adults (16 years old and over)	
2b. Children and young people (under 16 years old)	

The following questions are about **how many people attended** a service or act of worship at **Easter** (Easter Day and vigil services on Easter Eve), **Advent** (Advent Sunday until 23rd December) and **Christmas** (Christmas Eve and Christmas Day).

✓ If you did not hold any services or acts of worship at your church during these periods, please enter "0" in the relevant box.

3. How many people came to your church at Easter 2016?

3a: Number of communicants at service(s) on Easter Day and vigil service on Easter Eve	
3b. Total number of people attending worship (including communicants) at service(s) on Easter Day and vigil service on Easter Eve	

4. How many people came to special services run by your church during Advent 2016?

✓ Include attendance at special services run by your church from Advent Sunday until 23rd December, for example nativities, carol services, carols on the green, crib services.

4a. Total number of people attending special services held for the congregation and local community	
4b. Total number of people attending special services held specifically for civic organisations or schools	

5. How many people came to your church at Christmas 2016?

5a. Number of communicants at service(s) on Christmas Eve and Christmas Day	
5b. Total number of people attending worship (including communicants) at service(s) on Christmas Eve and Christmas Day	

The next section is the OCTOBER COUNT of the number of people attending your church for services and other acts of worship in October. This includes the number of people attending on Sundays and during the week (Monday-Saturday).

- ✓ Please include any fresh expressions of Church, unless they have submitted their own return. A fresh expression of Church is a form of church established primarily for the benefit of people who are not yet "members" of any church. For help identifying fresh expressions of Church, please visit <http://www.freshexpressions.org.uk> or use the "Choice tree" at the end of this form

You are asked to enter a count for each of the first 4 weeks of October 2016. The count is split into Sundays and weekdays; adults and children; and type of service (Church, fresh expressions of Church and school services).

Wherever possible, please do not count the same person multiple times in the same week – if someone attends your church more than once during Sunday, please only count them once. If someone attends on a Sunday, please do not include them again in the midweek count for that week.

Number of services: The number of services held on Sundays and weekdays. Enter "0" if there were none.

School services: These are services held in your church (or church building) that are attended by a school(s). There is a later question about acts of worship held in schools.

Adults: 16 years old and over. Please include those leading the service(s).

Children and young people: Under 16 years old.

Weekdays (Monday-Saturday): This should include people attending ONLY during the week and NOT on Sunday, i.e. if they have already attended a Sunday service, please try not to count them again if they attend another activity during the week.

Please INCLUDE:

- ✓ Clergy and other ministers attending or leading services
- ✓ Adults and children attending Sunday schools or equivalent activities
- ✓ Attendance at baptisms, including any visitors
- ✓ Any other church-based activities in which worship is the primary purpose and predominant feature
- ✓ Attendance at Communion outside the church, for example in homes, prisons, or hospitals (include as Church or Fresh expression attendance, as appropriate)

Please DO NOT INCLUDE:

- ✗ Attendance at weddings or funeral services
- ✗ Activities with only some worship element, such as house groups, parent and toddler groups, youth clubs, Alpha courses, and social events such as harvest suppers

6. How many people attended your church in October 2016?

- ✓ Please complete a count for each of the following four weeks
- ✓ Remember to count each person only once in any week, even if they attended more than once
- ✓ If there were exceptional circumstances that led to unusual October attendance figures in 2016, please let us know in the comment box at the end of this form

1.	Number of services	Adult			Children and young people		
		Church	Fresh expressions	School service	Church	Fresh expressions	School service
Sunday 2 nd October							
Weekdays 3 rd – 8 th							

2.	Number of services	Adult			Children and young people		
		Church	Fresh expressions	School service	Church	Fresh expressions	School service
Sunday 9 th October							
Weekdays 10 th – 15 th							

3.	Number of services	Adult			Children and young people		
		Church	Fresh expressions	School service	Church	Fresh expressions	School service
Sunday 16 th October							
Weekdays 17 th – 22 nd							

4.	Number of services	Adult			Children and young people		
		Church	Fresh expressions	School service	Church	Fresh expressions	School service
Sunday 23 rd October							
Weekdays 24 th – 29 th							

7. How often does your ministry team lead acts of worship in schools?

- ✓ This question refers to acts of worship in school buildings rather than in your church or church building (services held for schools in your church should be included within the October count, Easter or Christmas figures where appropriate)
- ✓ Please include any school-based acts of worship that are led by a person who holds office or responsibility for ministry within your church
- ✓ 'Usually' refers to during term-time or when the school is open, ignoring school holidays
- ✓ Please tick one box as the closest estimate

Never	Occasionally/ ad hoc	Usually once or twice a term	Usually once a month	Usually once a fortnight	Usually once a week	Usually more than once a week

The following questions are about your "worshipping community". Think about your regular worshipping community at the end of 2016. For more information about worshipping communities, please refer to <http://www.churchofengland.org/media/1529895/worshippingcommunityinfo.pdf>

- ✓ Include anyone who attends your church regularly, for example at least once a month, or would attend if they were not prevented by illness, infirmity or temporary absence
- ✓ Include all congregations in your church, including fresh expressions of Church
- ✗ Do not include visitors, e.g. holidaymakers, baptism parties etc.
- ✗ Do not include people who consider their 'home' church to be another church
- ✗ Do not include people who left the church earlier in the year (they are counted in the next question as 'leavers') and are not part of your worshipping community at the end of 2016

8. How many people are in your "worshipping community" at the end of 2016?

- ✓ Please complete all of the boxes, as far as you can. If there is no-one in that category, please write "0". If the age groups of your worshipping community are unknown, please enter the total figure only

TOTAL	Children (Age 0-10)	Young people (Age 11-17)	Adults (Age 18-69)	Adults (Age 70+)

9. How has your worshipping community changed during 2016?

- ✓ If you know how many people have left/joined your worshipping community but you do not know their reasons for leaving or joining, please enter the total figures (or your best estimates) only
- ✓ If there is no-one in a particular category, please write "0"
- ✓ If you are unable to complete this question, please leave it blank

9a. How many adults and children joined your worshipping community during 2016?

	TOTAL	Worshipping for the first time	Moved into the area	Moved from a local church	Returned to church
Adults (Age 18+)					
Children and young people					

9b. How many adults and children left your worshipping community during 2016?

	TOTAL	Death or illness	Moved away	Moved to a local church	Not worshipping anywhere
Adults (Age 18+)					
Children and young people					

The next questions are about fresh expressions of Church. A fresh expression of Church is a form of Church established primarily for the benefit of people who are not yet "members" of any church. Here you are asked to describe aspects of the way the fresh expression of Church is run, rather than providing numbers attending.

- ✓ For help in identifying fresh expressions of Church please visit <http://www.freshexpressions.org.uk> or use the "Choice tree" at the end of this form
- ✓ Fresh expressions of Church can be quite varied. If you remain unsure about whether an activity or service meets the definition of a fresh expression, please DO include it here

- ✓ We have included space for three fresh expressions of Church. If you have more, please continue on an additional sheet

✗ Do not include Alpha courses or outreach activities that do not include worship

10. What regular fresh expressions of Church are supported by your church?

No fresh expressions of Church (If your church did NOT hold fresh expressions of Church during 2016 please tick here and leave the rest of this page blank.)

Name of fresh expression	
Description of activity	
Where is it held? (please tick all that apply)	<input type="checkbox"/> Church <input type="checkbox"/> Church Hall <input type="checkbox"/> Other (please note where): _____
How often?	<input type="checkbox"/> Weekly <input type="checkbox"/> Fortnightly <input type="checkbox"/> Monthly <input type="checkbox"/> Quarterly <input type="checkbox"/> Other (please note how often): _____
Age group aimed at? (please tick all that apply)	<input type="checkbox"/> ALL ages <input type="checkbox"/> Family <input type="checkbox"/> 0-4 <input type="checkbox"/> 5-10 <input type="checkbox"/> 11-17 <input type="checkbox"/> 18-39 <input type="checkbox"/> 40-69 <input type="checkbox"/> 70+
Are attendees also worshippers at other services in your parish? (please tick all that apply)	<input type="checkbox"/> Regular <input type="checkbox"/> Irregular <input type="checkbox"/> Previous attendees <input type="checkbox"/> Never

Name of fresh expression	
Description of activity	
Where is it held? (please tick all that apply)	<input type="checkbox"/> Church <input type="checkbox"/> Church Hall <input type="checkbox"/> Other (please note where): _____
How often?	<input type="checkbox"/> Weekly <input type="checkbox"/> Fortnightly <input type="checkbox"/> Monthly <input type="checkbox"/> Quarterly <input type="checkbox"/> Other (please note how often): _____
Age group aimed at? (please tick all that apply)	<input type="checkbox"/> ALL ages <input type="checkbox"/> Family <input type="checkbox"/> 0-4 <input type="checkbox"/> 5-10 <input type="checkbox"/> 11-17 <input type="checkbox"/> 18-39 <input type="checkbox"/> 40-69 <input type="checkbox"/> 70+
Are attendees also worshippers at other services in your parish? (please tick all that apply)	<input type="checkbox"/> Regular <input type="checkbox"/> Irregular <input type="checkbox"/> Previous attendees <input type="checkbox"/> Never

Name of fresh expression	
Description of activity	
Where is it held? (please tick all that apply)	<input type="checkbox"/> Church <input type="checkbox"/> Church Hall <input type="checkbox"/> Other (please note where): _____
How often?	<input type="checkbox"/> Weekly <input type="checkbox"/> Fortnightly <input type="checkbox"/> Monthly <input type="checkbox"/> Quarterly <input type="checkbox"/> Other (please note how often): _____
Age group aimed at? (please tick all that apply)	<input type="checkbox"/> ALL ages <input type="checkbox"/> Family <input type="checkbox"/> 0-4 <input type="checkbox"/> 5-10 <input type="checkbox"/> 11-17 <input type="checkbox"/> 18-39 <input type="checkbox"/> 40-69 <input type="checkbox"/> 70+
Are attendees also worshippers at other services in your parish? (please tick all that apply)	<input type="checkbox"/> Regular <input type="checkbox"/> Irregular <input type="checkbox"/> Previous attendees <input type="checkbox"/> Never

11. How many baptisms and thanksgivings for the gift of a child were held in your church during 2016?

- ✓ If separate services of thanksgiving and baptism were held for an individual both should be recorded here

	Infants (<1 year)	Children (1-4 years)	Children (5-12 years)	Youth/ adults (13+)
Number of persons baptised				
Number of children for whom a thanksgiving service for the gift of a child (birth or adoption) was held				

12. How many marriages and services of prayer and dedication after civil marriage were held in your church during 2016?

Number of couples married in your church	
Number of couples for whom a service of prayer and dedication was held in your church (after civil marriage)	

13. How many funeral services were held at or on behalf of your church during 2016?

- ✓ Include all funerals that were held at your church
- ✓ Include all funerals conducted by any member of your ministry team (including Readers, stipendiary clergy, non-stipendiary clergy and retired clergy) at a crematorium or cemetery
- ✗ Do not include services that performed only a burial of ashes or only a committal

Number of deceased for whom a funeral service was held at your church	
Number of deceased for whom a full funeral service was conducted by a member of your ministry team at a crematorium or cemetery, excluding committal only and burial of ashes only	

Finally, there is a special focus question about visitors to your church. In the following questions, by visitors we mean people coming into your church for reasons other than to attend services or to attend a particular group or activity (e.g. reasons for visiting would include coming to see the building and/or its artefacts; private prayer or reflection).

14a. How often is your church open to visitors outside of service times?

- ✓ Please tick one box as the closest estimate.

Never	Occasionally/ ad hoc	About 1-2 days a month	About 1-2 days each week	About 3-4 days each week	5 or more days each week

14b. For how many hours in a typical week (not including service times) is your church unlocked and open to visitors?

Number of hours the church is open to visitors in a typical week	
--	--

14c. During a typical week, approximately how many visitors come to your church?

Number of visitors in a typical week	
Tick here if you are unable to estimate this figure	

Thank you for completing your annual return on behalf of your church. Please take a moment to review your answers. Make sure that you have completed every question as far as possible and not left any answers blank (use "0" or "unknown" or "no services" if necessary), aside from where instructed in question 9. Other blank answers may be queried with you later.

Please record below the contact details for the person who has completed this form (or the lead person if more than one individual has helped with the return).

Name: _____ Position: _____
 email address: _____ Date of completion: _____

Looking back across 2016, were there any exceptional circumstances (e.g. an interregnum or building works) or significant changes that may have led to unusual figures in this return?

--

Is there anything additional that we should note when including your annual return within the Statistics for Mission?

--

Thank you for taking the time to complete this form. Your contribution is essential to the on-going care and understanding of our churches and congregations; your diligence, time, and effort are greatly appreciated.