



THE IMPACT OF OUR FUNDING

The funding provided by the **Church Commissioners** and distributed via the **Archbishops' Council** has a transformative impact, touching lives within and outside of the Church, supporting both ongoing ministry and one-off projects, in rural and urban areas throughout England.

Please see '**Funding for the Church**' for more information on what we fund and how we determine the maximum amount of funding we can provide sustainably.

Please see '**How we invest**' for more information on how we manage the fund.

The long-term performance of the Church's endowment fund enables long-term sustainable financial support for the Church's ministry. This funding provides around 1/6 of the total annual running costs of the Church of England.

Funding for frontline ministry



The Archbishops' Council used part of the Additional Distributions made available in the 2020-22 triennium to **grow ordained vocations**. The increase in stipendiary clergy was one of the ambitions of **Renewal and Reform** and will help reverse a previous decline in numbers. The support is proportionately higher for those dioceses that need it most.

The Ministry Experience Scheme (MES) is one of the ways in which the Church encourages vocations among younger people. This one-year scheme offers young people from a wide variety of backgrounds the opportunity to discover their calling, combining work in parish ministry with theological studies. The majority of the MES participants go on placements in low-income parishes, focusing energy and resources in the areas of greatest need. More than 100 participants out of a total of 500 (since 2013) went on to train for ordained ministry, and 75% of all participants said they would embark on further discernment and training in ministry.

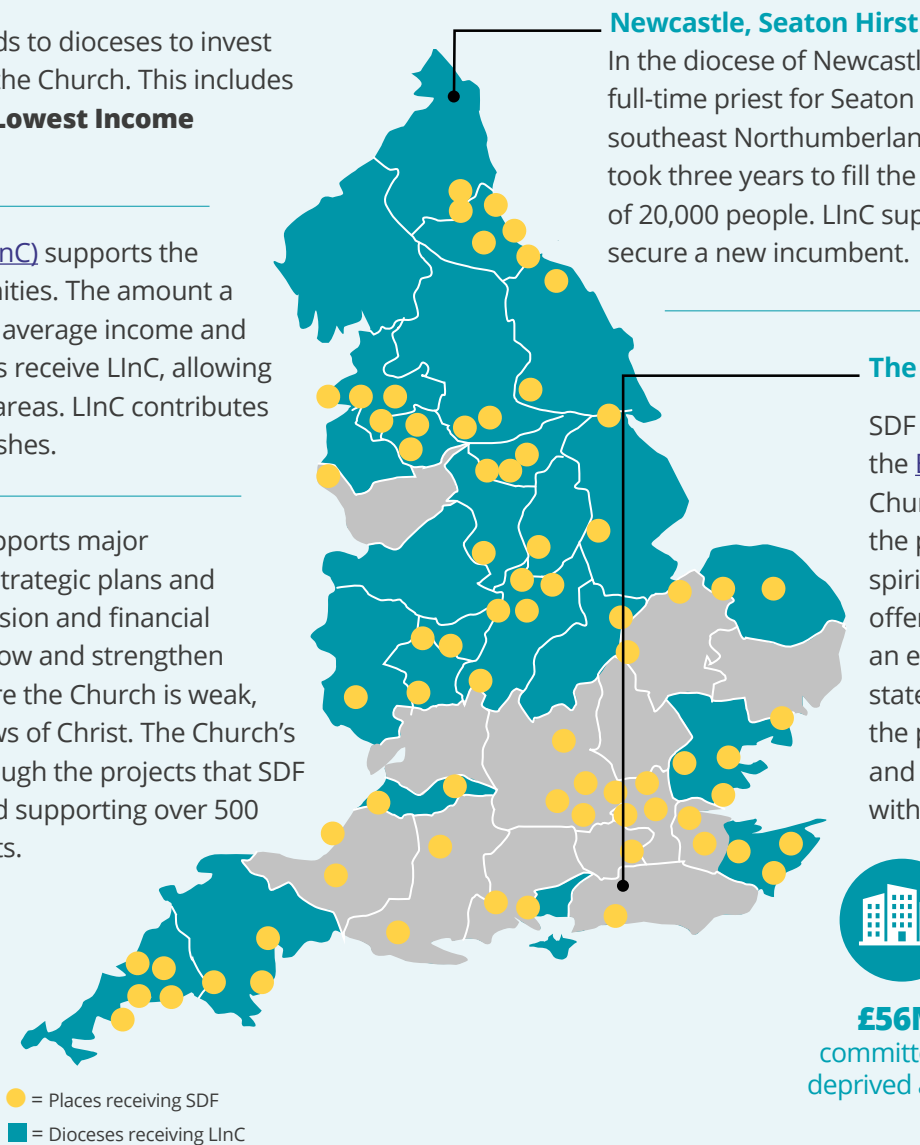


Funding mission and growth

The Archbishops' Council distributes funds to dioceses to invest in the spiritual and numerical growth of the Church. This includes **Strategic Development Funding** and **Lowest Income Communities Funding**.

Lowest Income Communities Funding (LInC) supports the Church's mission in the poorest communities. The amount a diocese receives depends upon the local average income and population. More than half of all dioceses receive LInC, allowing them to focus their ministry in deprived areas. LInC contributes towards the costs of priests in 1,700 parishes.

Strategic Development Funding (SDF) supports major change projects which fit with dioceses' strategic plans and make a significant difference to their mission and financial strength. The key purpose of SDF is to grow and strengthen worshipping communities in places where the Church is weak, enabling churches to share the good news of Christ. The Church's social action has been strengthened through the projects that SDF supports, bringing thousands to faith and supporting over 500 additional ordained and lay ministry posts.



£56M
committed to
deprived areas¹



£63M
committed to
children and youth



£19M
committed to
rural areas

¹ Figures for SDF only. Source: SIB annual report 2020





Digital: a growing church for all people in all places

The Church of England seeks to be a Church for all people in all places, reaching people where they are, both in the real world and online. We fund the award-winning [Digital Team](#) that creates [resources](#) for use by local churches to help reach a diverse audience, including less regular churchgoers. The team provides step-by-step guides and webinars, material that can be customised by local churches and downloaded for free, alongside ready-to-use print materials, all of which contributed to successful Christmas and Lent campaigns in recent years. Purpose-built ([smart speaker](#)) apps and podcasts, including [Time to Pray](#) and [Daily Prayer](#), have enabled millions of people to ask the Church for prayers and information about the Christian faith. Weekly online services, launched in 2020, now have a regular community joining each Sunday.



Giving and generosity

We support the local church by providing funding via the Archbishops' Council for a range of tools to promote [giving and generosity](#). By 2024, [more than 2,000 churches](#) across the country will receive a free contactless giving device. Each of these churches will be offered one-to-one training, as well as follow-up support and resources from both national and diocesan giving teams. Churches receiving a device in the successful pilot projects have been encouraged to set up online giving, with many finding creative ways to use QR codes to encourage people to give. These churches have raised a total of over £150,000 in the first year of the pilot through a combination of contactless and online giving.



In 2021

- The Church's Advent and Christmas campaign was seen more than **27 million** times on social media.
- [AChurchNearYou](#), our local church-finder website, received more than **77 million** views.
- The Daily Prayer podcast was downloaded more than **2.5 million** times.



Bishops and archbishops

The Church Commissioners enable the ministry of diocesan bishops and archbishops by funding their stipends, housing ('See Houses'), office and working costs. Bishops have discretion to use their funding towards their episcopal duties according to the needs of their diocese.

Our funding towards sustainability projects at See Houses plays an important part in the Church's route to net zero.



After a successful pilot, sustainability surveys are being rolled out across all See Houses, to enable us to make them more energy efficient.



Eleven See Houses had EV charging points installed, with more to follow.

Cathedrals

We provide funding for [cathedrals](#). It is our legal responsibility to fund the cost of the dean and two canons in every cathedral.² We also make discretionary grants to cathedrals with the lowest incomes, which contribute towards the stipends of other clergy and the salaries of lay staff.

² Except Oxford, the Isle of Man and the Diocese of Europe



The Cathedrals Sustainability Fund

We provide grants through the Cathedrals Sustainability Fund (CSF), which was established in 2017. So far, more than £10 million has been awarded via the CSF to provide seed funding to cathedrals for activities that promote financial sustainability.

CSF support includes:

- Increasing cathedrals' income streams by supporting fundraising, commercial management and digital marketing.
- Providing support to offset the worst financial impact of Covid-19 – for example, to help retain highly skilled heritage staff and support members of the professional cathedral choirs.

Growing donations

Gloucester Cathedral used its CSF grant to develop an 'entry by donation' model. Visitor Services staff improved the welcome for all visitors and increased the Cathedral's income at the same time. Donations grew by 182% in the first year of the project. Despite the impact of Covid-19, the average donation per visitor has risen from 51p to £1.37. The aim is to grow visitor donations from £126,000 a year to over £656,000 by the end of year five.

