

A multi-component, community-based strategy to facilitate COVID-19 vaccine uptake among Latinx populations: from theory to practice

AUTHORS: Carina Marquez^{1*}, Andrew D. Kerkhoff¹, Jamie Naso², Maria G. Contreras^{2,3}, Edgar Castellanos^{2,4}, Susana Rojas⁵, James Peng¹, Luis Rubio¹, Diane Jones², Jon Jacobo⁵, Susy Rojas⁵, Rafael Gonzalez⁶, Jonathan D. Fuchs⁶, Douglas Black¹, Salustiano Ribeiro⁷, Jen Nossokoff⁷, Valerie Tulier-Laiwa³, Jacqueline Martinez², Gabriel Chamie¹, Genay Pilarowski⁸, Joseph DeRisi^{9,10}, Maya Petersen¹¹, Diane V. Havlir¹

Affiliations:

¹Division of HIV, Infectious Diseases and Global Medicine, Zuckerberg San Francisco General Hospital and Trauma Center, University of California San Francisco

²Unidos en Salud, San Francisco, CA, USA

³Department of Medicine, University of California, San Francisco, CA, USA

⁴Department of Radiology and Biomedical Imaging, University of California San Francisco, San Francisco, California, USA

⁵The San Francisco Latino Task Force on COVID-19, San Francisco, CA, USA

⁶San Francisco Department of Public Health, San Francisco, California, USA

⁷Bay Area Phlebotomy and Laboratory Services (BayPLS), San Francisco, CA, USA

⁸Department of Pathology, Stanford University, Stanford, California, USA

⁹Chan Zuckerberg Biohub, San Francisco, California, USA

¹⁰Department of Biochemistry and Biophysics, University of California San Francisco, San Francisco, California, USA

¹¹Division of Epidemiology and Biostatistics, School of Public Health, University of California, Berkeley, Berkeley, CA, USA

Corresponding author:

*Carina.Marquez@ucsf.edu

Abstract

1 **Background**

2 COVID-19 vaccine coverage in the Latinx community depends on delivery systems that
3 overcome barriers such as institutional distrust, misinformation, and access to care. We
4 hypothesized that a community-centered vaccination strategy that included mobilization,
5 vaccination, and “activation” components could successfully reach an underserved Latinx
6 population, utilizing its social networks to boost vaccination coverage.

7 **Methods and Findings**

8 Our community-academic-public health partnership, “Unidos en Salud,” utilized a theory-
9 informed approach to design our “Motivate, Vaccinate, and Activate” COVID-19 vaccination
10 strategy. Our strategy’s design was guided by the PRECEDE Model and sought to address
11 and overcome predisposing, enabling, and reinforcing barriers to COVID-19 vaccination faced
12 by Latinx individuals in San Francisco. We evaluated our prototype outdoor, “neighborhood”
13 vaccination program located in a central commercial and transport hub in the Mission District in
14 San Francisco, using the Reach, Effectiveness, Adoption, Implementation and Maintenance
15 (RE-AIM) framework during a 16-week period from February 1, 2021 to May 19, 2021.
16 Programmatic data, city-wide COVID-19 surveillance data, and a survey conducted between
17 May 2, 2021 and May 19, 2021 among 997 vaccinated clients ≥ 16 years old were used in the
18 evaluation.

19 There were 20,792 COVID-19 vaccinations administered at the neighborhood site during the
20 16-week evaluation period. Vaccine recipients had a median age of 43 (IQR 32-56) years,
21 53.9% were male and 70.5% were Latinx, 14.1% white, 7.7% Asian, 2.4% Black, and 5.3%
22 other. Latinx vaccinated clients were substantially more likely than non-Latinx clients to have
23 an annual household income of less than \$50,000 a year (76.1% vs. 33.5%), be a first-
24 generation immigrant (60.2% vs. 30.1%), not have health insurance (47.3% vs. 16.0%), and
25 not have access to primary care provider (62.4% vs. 36.2%). The most frequently reported
26 reasons for choosing vaccination at the site were its neighborhood location (28.6%), easy and
27 convenient scheduling (26.9%) and recommendation by someone they trusted (18.1%);

28 approximately 99% reported having an overall positive experience, regardless of ethnicity.
29 Notably, 58.3% of clients reported that they were able to get vaccinated earlier because of the
30 neighborhood vaccination site, 98.4% of clients completed both vaccine doses, and 90.7%
31 said that they were more likely to recommend COVID-19 vaccination to family and friends after
32 their experience; these findings did not substantially differ according to ethnicity. There were
33 40.3% of vaccinated clients who said they still knew at least one unvaccinated person (64.6%
34 knew ≥ 3). Among clients who received both vaccine doses (n=729), 91.0% said that after their
35 vaccination experience, they had personally reached out to at least one unvaccinated person
36 they knew (61.6% reached out to ≥ 3) to recommend getting vaccinated; 83.0% of clients
37 reported that one or more friends, and/or family members got vaccinated as a result of their
38 outreach, including 18.9% who reported 6 or more persons got vaccinated as a result of their
39 influence.

40 **Conclusions**

41 A multi-component, “Motivate, Vaccinate, and Activate” community-based strategy addressing
42 barriers to COVID-19 vaccination for the Latinx population reached the intended population,
43 and vaccinated individuals served as ambassadors to recruit other friends and family members
44 to get vaccinated.

45 **Introduction**

46 COVID-19 has disproportionately affected underserved communities of color, including Latinx
47 in the United States, further amplifying long-standing health disparities [1–4]. The highly safe
48 and effective COVID-19 vaccines are the most critical tool in our public health strategy to
49 overcome the COVID-19 pandemic. The success of our public health vaccination strategy
50 relies on our ability to rapidly reach the population at highest risks of COVID-19, including
51 communities of color which have been subject to decades of inequities and often have the
52 least access to health care, including vaccination [5,6].

53

54 There is a growing understanding of the barriers to vaccination communities of color face in
55 the United States. In California where Latinx persons account for approximately 40% of the
56 total population and 63% of COVID-19 cases to date, they have only received 27% of all
57 COVID-19 vaccinations administered statewide [7,8]. Some of the barriers to COVID-19
58 vaccine uptake include a lack of trust in health systems stemming from historical experience,
59 structural racism, inaccurate and insufficient information, and structural barriers to vaccine
60 access [2,9–11]. There are few formal evaluations of vaccination strategies that can overcome
61 these barriers, and none for COVID-19 vaccines.

62

63 We hypothesized that a community-centered, culturally-tailored, theory-informed vaccination
64 strategy that included mobilization, vaccination and “activation” components could successfully
65 reach an underserved Latinx population, utilizing its social networks to boost vaccination
66 coverage. We developed this multifaceted approach via a community-academic-public health
67 partnership founded in April, 2020 to increase SARS-COV-2 testing and public health
68 surveillance in the Mission neighborhood in San Francisco. In this paper we describe the
69 “Motivate, Vaccinate, and Activate” vaccination program and evaluate the program according
70 to the Reach, Effectiveness, Adoption, Implementation and Maintenance (RE-AIM) framework
71 [12] during a 16-week period from February 1 and May 19th 2021.

72 **Methods**

73

74 **Setting**

75 The Unidos en Salud (UeS) neighborhood vaccination program was implemented in the
76 Mission District, home to a large Latinx and immigrant community in San Francisco, California
77 [13]. The Mission Neighborhood comprises a large majority of the 94110 zip code, which has
78 an estimated population of 72,380 persons (62,452 \geq 16 years old) of whom 33.4% identify as
79 Latinx, 43.8% white, 14.7% Asian and 3.3% Black [14]. The neighborhood is economically
80 heterogenous; the median household income is \$134,592 per year, yet 22.6% of households
81 have a combined income less than \$50,000. The Mission District is an important cultural and
82 commercial hub for Latinx people living throughout the many neighborhoods of San
83 Francisco's Southeast sector, which have consistently had the highest rates of COVID-19
84 throughout the pandemic (**Supplementary Figure 1**), concentrated among low-income, front
85 line workers, unable to work from home [1,15]. UeS has offered free walk-up, COVID-19
86 testing in the Mission District since April, 2020.

87

88 **Ethics**

89 The study was conducted under a public health surveillance program reviewed by UCSF
90 Committee on Human Research. Survey participants provided consent in their preferred
91 language prior to survey initiation.

92

93 **Community-academic-public health partnership model**

94 Unidos en Salud ("United in Health", UeS) is a community-academic-public health partnership
95 founded in April 2020 to respond to and support the Latinx community in San Francisco during
96 the COVID-19 pandemic. The partnership provides ongoing SARS-CoV-2 testing and
97 surveillance [1,15–18]. The partnership includes the San Francisco Latino Task Force on
98 COVID-19 (LTF), the University of California, San Francisco (UCSF), the University of
99 California, Berkeley, the Chan Zuckerberg Biohub, locally owned Bay Area Phlebotomy and
100 Laboratory Services (BayPLS), Primary.Health, and the San Francisco Department of Public
101 Health (SFDPH). The LTF is a group made up of members and leaders from more than three
102 dozen Latinx, community-based organizations, many of which are long-standing, that was

103 forged during the COVID-19 pandemic [19]. Primary. Health informatics was founded in 2020 to
104 meet community based COVID-19 testing efforts and provides cloud-based support for
105 COVID-19 testing and vaccination registration and data metric tracking. BayPLS has bilingual
106 staff that have provided community testing and vaccination services in the San Francisco Bay
107 Area since the beginning of the COVID-19 pandemic. UeS operates via joint decision making
108 by leaders from each of the partners and academic institution faculty that occur at weekly
109 meetings. Funding for the vaccination program was provided by a combination of the SFDPH,
110 UCSF, private donors and the Chan-Zuckerberg Initiative.

111

112 **Overview and design of a strategy to reach and increase COVID-** 113 **19 vaccination among Latinx individuals**

114 For our vaccine strategy prototype, we utilized a theory-informed approach to design a
115 multicomponent, implementation strategy that addressed barriers to COVID-19 vaccination
116 faced by Latinx and other community members (**Table 1**). We specifically sought to reach
117 those community members for whom the City’s high volume vaccination sites posed barriers
118 such as a lack of transportation and “institutional mistrust.” We built upon lessons learned
119 providing community-based COVID-19 services to socioeconomically vulnerable individuals
120 [13–15], including providing free walk-up SARS-CoV-2 testing, with support for persons testing
121 positive, to over 30,000 persons since April 2020. Formative findings from this work were used
122 to design our “Motivate, Vaccinate, and Activate” strategy (**Figure 1**). The “Motivate,
123 Vaccinate, and Activate” strategy’s design was guided by the PRECEDE Model [20] and
124 therefore sought to address and overcome predisposing, enabling and reinforcing barriers to
125 COVID-19 vaccination faced by Latinx and other low-income community members in San
126 Francisco (**Table 1**). The “Motivate, Vaccinate, and Activate” strategy represents a culturally-
127 tailored, multicomponent implementation strategy to optimize reach and uptake of COVID-19
128 vaccination among Latinx individuals in San Francisco. Further details for each strategy
129 component are provided below and are summarized in **Table 1**.

130

131 **“Motivate, Vaccinate, and Activate” strategy components**

132 **Community mobilization and demand generation activities (“Motivate”)**

133 We used several methods to inform community members about COVID-19 vaccination and its
134 benefits, raise awareness about COVID-19 vaccine eligibility and the UeS neighborhood
135 vaccination site, and ultimately increase motivation and demand for COVID-19 vaccination
136 (**Table 1**). Responses to a survey on vaccine attitudes and preferences from community
137 members seeking COVID-19 testing at our site in January 2021 were used to inform training of
138 our community workers and informational materials on vaccination [9]. Vaccine efficacy, short-
139 and long-term side effects of vaccines, and conspiracy theories on motivation behind vaccine
140 development were some of the key topics of concern that were directly addressed through
141 educational and outreach efforts

142 UeS community workers performed direct community outreach in the Mission District,
143 via door-to-door household canvassing with flyers and by speaking to business owners in the
144 commercial corridor of the Mission. We also emphasized to elder care facilities the opportunity
145 and rationale to vaccinate high-risk adults. The LTF reached out to their multiple CBO's and
146 network of community organization to push out invitations to priority groups such as community
147 health workers as they became eligible; this guaranteed that we were reaching our key
148 populations who didn't necessarily have access to the mass media advertising of vaccination
149 appointments. Additionally, automated text messages (and reminder texts) were sent to 26,206
150 unique phone numbers of community members who had previously been tested for COVID-19
151 at a UeS site as soon as they became eligible for vaccination and invited them to get
152 vaccinated at the UeS neighborhood site. Furthermore, flyers and posters were posted
153 throughout the community (**Figure 2a**), and UeS members undertook Spanish radio,
154 newspaper and television interviews to feature the UeS neighborhood vaccination site.
155 Community leaders vaccinated at the site posted photos on social media (Facebook, TikTok),
156 encouraging others to get vaccinated. Additionally, to engage community members who trust
157 physicians but do not have access to one, we hosted Sunday 'cafecitos' directly across from
158 the vaccination site, where community members could walk up and ask Latinx physicians
159 questions while enjoying free pan dulce and coffee.

160 . 161 **A client-centered neighborhood vaccination site ("Vaccinate")**

162 **Neighborhood vaccination site characteristics**

163 The UeS neighborhood vaccination site was the first of 8 community-led sites established in
164 partnership with the SFDPH to increase equitable distribution of vaccines to neighborhoods
165 disproportionately affected by COVID-19. The site was located outdoors and was located in a
166 small parking lot (approximately 8,800 square feet), behind a McDonald's restaurant at 24th
167 and Capp Street (**Figure 2b**). The vaccination site was across the street from the free, walk-up
168 UeS COVID-19 testing site, located at a busy public plaza and transport hub – the intersection
169 of both above ground bus/streetcar system (MUNI) and underground subway system (BART)
170 (**Figure 2c**). This location was intentionally chosen in order to enhance visibility and promote
171 walk-up scheduling as people exited public transit and walked through the neighborhood. The
172 site was open 4 days a week (Sunday through Wednesday) between the hours of 9am and
173 4pm. It was designed to be open in order to improve flow, and had several semi-permanent
174 tents corresponding to different aspects of the vaccination process (i.e., check-in, pre-
175 vaccination waiting area, vaccination area, and post-vaccination waiting area) (**Figure 2d**); the
176 tents also provided privacy from the busy surrounding area as well as protection from the
177 elements. The site played music in order to attract persons passing by and to create a
178 welcoming and positive environment for those attending the site. Large, colorful signs in both
179 Spanish and English were hung around and near the site to generate further awareness and
180 encourage community members to register to get vaccinated.

181 The vaccine site officially opened on February 1, 2021 and remains operational. It
182 provided clients either the Pfizer or Moderna COVID-19 mRNA two-dose vaccine, depending
183 on availability. In order to minimize inconvenience for busy, socioeconomically vulnerable
184 community members, the vaccine strategy prioritized smooth logistics and avoiding any need
185 to reschedule appointments. To this end, while following dosage segment regulations we
186 worked closely with the SFDPH and California health officials to mitigate any disruptions in
187 vaccine availability. We further limited vaccination appointments to reduce the likelihood of
188 vaccine stock-out and to facilitate site logistics. As we developed clinic operating protocols and
189 improved efficiency, we were able to raise the appointment cap to 500 per day.

190

191 **Vaccination site personnel and customer service principles (client-centeredness)**

192 The UeS neighborhood vaccination site was predominantly staffed by trained members of the
193 local community who were bicultural and bilingual or monolingual Spanish speakers.

194 Vaccinations were provided by bicultural and bilingual Spanish-speaking BayPLS and UeS
195 staff, many whom had worked for prior UeS mass community-based COVID-19 testing events.
196 The number of staff on site changed throughout the implementation period based on demand
197 and ranged between 25 and 30 and peaked at 40 during mid-April 2021 when the general
198 population became eligible for the COVID-19 vaccine in California. Staffing at the site
199 consisted of 6 persons registering clients for vaccination appointments, 3 persons greeting and
200 checking-in clients, 12 people preparing and administering vaccines, 2 people assisting clients
201 with translation and navigation, 2 people roaming the site ('community health team') providing
202 education, answering any client questions, and discussing how to motivate unvaccinated
203 friends and family, 2 persons supporting check-out procedures including vaccine card
204 preparations, and 2 site managers overseeing staff and logistics. The security and safety of
205 clients and staff were extremely important considerations and were provided by Promotores
206 and members of San Francisco's Community Ambassadors program.

207 All site personnel were selected based on their desire to serve their community with
208 respect and compassion; they received initial and ongoing training emphasizing the
209 importance of kindness and helpfulness and that the "client" needs should be understood and
210 respected. All site personnel were also provided basic education on key facts related to
211 COVID-19 vaccinations, based on the principle that any community member might ask any
212 staff member basic COVID-19 vaccine questions at any time point in the process, and such
213 question provide important teaching opportunities. Daily morning staff meetings occurred
214 throughout the implementation period, which provided opportunities to discuss ongoing
215 successes and challenges as well as changing COVID-19 vaccine eligibility criteria and any
216 associated necessary adaptations in strategies; they also served as an important opportunity
217 to provide staff refresher trainings on client-centeredness and updated education as new
218 knowledge related to COVID-19 vaccines became available.

219

220 **Low-barrier registration and vaccination approach**

221 COVID-19 vaccine registration was originally available on-site, but it was quickly moved to the
222 nearby UeS testing site given high demand, long lines and resultant congestion. We initially
223 only provided in-person registration to preferentially provide access to eligible community
224 members for whom online registration, as required at the time for most other vaccination sites,

225 presented a barrier to access. In-person appointment scheduling was available onsite outside
226 of operational hours and served as an opportunity for community members to interact and
227 converse with one another while awaiting scheduling. To remove barriers to registration and
228 vaccine appointment check-in, especially for clients who may have had immigration fears or
229 concerns, community members were able to self-attest to their eligibility. Clients were not
230 required to show any form of identification, or to provide proof of residence, or healthcare
231 insurance in order to be scheduled. Upon arriving at the vaccination site, clients were checked
232 in and scheduled for their second vaccine dose. Following vaccination, clients waited for at
233 least 15 minutes in the post-vaccination waiting area (**Figure 2d**), where site staff provided
234 them education on adverse side effects to monitor for and ensured that any questions were
235 answered (**Table 1**). Those clients who did not have insurance or a primary care provider were
236 set up with a community health partner who offered low barrier care in the event that they had
237 any health concerns beyond the standard expected side effects of vaccination. Upon request,
238 clients were provided letters for employers to account for their time away from work. Clients were
239 provided their proof of vaccination only at the end of this observation period.

240

241 **Leveraging social networks to increase vaccine uptake (“Activate”)**

242 In recognition of the important role that vaccinated individuals play in influencing COVID-19
243 vaccine knowledge, attitudes and beliefs (and ultimately vaccine uptake) among their friends,
244 family members, and co-workers, we sought to empower clients to become “vaccine
245 ambassadors (**Table 1**).” During the post-vaccination waiting period, two dedicated staff
246 members (who also provided post-vaccination education and answered any questions), shared
247 their personal experiences, encouraged clients to reach out to members of their social network
248 that had not yet been vaccinated and share their positive vaccination experiences and
249 recommend that they too get vaccinated. This simple act serves multiple functions, including
250 that the peer vaccine ambassador can provide COVID-19 vaccine education and debunk
251 common myths and misconceptions, demonstrate good health-seeking behavior, serve as a
252 credible source for vaccination experiences and also to provide social support to get
253 vaccinated [21–23]. Site staff provided tips on how to handle difficult conversations and role-
254 played different hypothetical scenarios with clients to bolster confidence. All vaccinated clients
255 were provided fliers with UeS neighborhood vaccination site registration information that could

256 be handed out to unvaccinated friends, family members and coworkers. The flyer included a
257 phone number for peer referrals of the vaccinated clients to call with any questions related to
258 COVID-19 vaccines or registration.

259 **Evaluation of the “Motivate, Vaccinate, and Activate” Strategy**

260 **RE-AIM evaluation measures**

261 We evaluated the “Motivate, Vaccinate, and Activate” strategy using the Reach, Effectiveness,
262 Adoption, Implementation and Maintenance (RE-AIM) framework. We chose the RE-AIM
263 framework as it allowed us to evaluate both individual client-level outcomes (reach and
264 effectiveness), as well as site and community-level outcomes (effectiveness, implementation,
265 and maintenance) [24]. Furthermore, RE-AIM has recently been updated to include an explicit
266 focus on equity and to address dynamic implementation contexts that may require adaptive
267 strategies to maintain interventions over time [12]. This provided an enhanced framework to
268 evaluate our implementation strategy, which sought to facilitate equitable vaccine access and
269 uptake among Latinx community members and also have components that could be adapted
270 to respond to rapidly changing community needs and public health guidance.

271 • **Reach:** We sought to reach and increase vaccine uptake among any Latinx adults and
272 adolescents living in San Francisco, with an emphasis on the Mission District, as soon as
273 they became eligible according SFPDPH guidance. We conceptualized reach at two levels
274 (proximal and distal). The proximal reach of our vaccination program included the number
275 of individuals directly reached by each implementation strategy component. The distal
276 reach included the number of individuals who were received a COVID-19 vaccination at the
277 UeS neighborhood vaccination site. Because of the community-based design of our
278 implementation strategy, it is difficult to measure proximal reach, e.g., the exact number of
279 Latinx community members who were reached through the community mobilization and
280 demand generation activities, as a result of simply passing by the community-located
281 vaccination site, or through contact with peer vaccine ambassadors. However, because the
282 UeS neighborhood vaccination site was outside of the formal healthcare system, these
283 activities were necessary precursors for community members to become aware of,
284 schedule, and receive a vaccination at the UeS neighborhood vaccination site. Therefore,
285 our evaluation focused on distal reach, e.g., the number of individuals scheduled for
286 vaccination and vaccinated at the UeS neighborhood site. In order to evaluate whether our

287 strategy reached Latinx people (the priority population our strategy was tailored for and
288 aimed to reach) we also evaluated the demographic and socioeconomic characteristics of
289 individuals vaccinated at the neighborhood vaccination site as measures of
290 representativeness. We also assessed measures of geographic coverage by estimating the
291 proportion of all Mission District (zip code 94110) residents vaccinated overall and among
292 Latinx individuals as well as the proportion of all vaccinated individuals in San Francisco
293 reached by the UeS neighborhood site overall and among Latinx persons.

- 294 • **Effectiveness:** There is strong evidence, including robust population-level data, that
295 demonstrates that the COVID-19 vaccine, once administered, is highly effective in reducing
296 the risk of COVID-19 disease and transmission [25–28]. Therefore, measures of
297 effectiveness associated with the multicomponent implementation strategy used indicators
298 of behavior change, including the proportion of clients who said that they were able to get
299 vaccinated more quickly had the neighborhood site not existed and the proportion of clients
300 who stated that they were more likely to reach out to and recommend vaccination to their
301 unvaccinated friends, family members and coworkers after their experiences at the UeS
302 neighborhood vaccination site. We also evaluated the proportion of clients at the
303 neighborhood vaccination site who completed their second vaccine dose [29], as this metric
304 may reflect a number of aspects of fidelity to and acceptability of the “Motivate, Vaccinate,
305 and Activate” strategy and is therefore a composite quality outcome measure.
- 306 • **Implementation:** Implementation outcomes assessed were fidelity to each of the
307 implementation strategy components (Motivate, Vaccinate, and Activate) as designed and
308 also the acceptability of the overall implementation strategy among community members
309 vaccinated through the UeS Neighborhood site.
- 310 • **Maintenance:** We evaluated maintenance in two ways. We first assessed temporal trends
311 in the number of individuals receiving their first COVID-19 vaccination – overall and
312 according to both eligibility criteria and ethnicity. This provided insight into the extent to
313 which the “Motivate, Vaccinate, and Activate” strategy was able to evolve over time and
314 mobilize different types individuals as they became eligible, while also being able to
315 consistently reach Latinx individuals throughout the implementation period. We also
316 documented and characterized adaptations during the implementation period.

317 **Data sources and Statistics**

318 Several data sources informed the evaluation of the “Motivate, Vaccinate, and Activate”
319 strategy. Programmatic UeS vaccination data informed reach (including basic demographic
320 characteristics), effectiveness and maintenance related-outcomes. SFDPH surveillance data was
321 used to inform estimates of vaccination coverage [30]. Census data informed population
322 estimates in the Mission District (zip code 94110) [14]. To better understand the characteristics
323 of those being reached, the possible reach and effectiveness of the peer vaccine ambassador
324 strategy component, and the acceptability of our strategy among clients served by the
325 neighborhood vaccination site, we administered a structured survey between May 2, 2021 and
326 May 19, 2021. The survey data also captured additional client information including household
327 income, occupation, insurance status and primary care status. It was administered on-site
328 among those in the waiting area following completion of their vaccination (either first or second
329 dose). Fidelity to and adaptations made to the implementation strategy components were
330 assessed, discussed and documented throughout the implementation period as part of daily
331 meetings with UeS neighborhood vaccination site workers and weekly meetings with UeS
332 leadership.

333 Data were administratively censored at May 19, 2021, corresponding to a 16-week
334 evaluation period. Analyses were restricted to adolescents and adults 16 years of age and
335 older. Simple descriptive statistics were used to characterize individuals - Fisher’s exact or chi-
336 squared tests were applied, as appropriate. As we primarily aimed to reach Latinx community
337 members through our “Motivate, Vaccinate, and Activate” Strategy, all outcomes were
338 assessed overall and according to whether individuals identified as Latinx (e.g., Latinx versus
339 not-Latinx).

340 **Results**

341 **Reach**

342 **COVID-19 vaccine uptake**

343 Overall, there were 12,103 unique individuals registered for a COVID-19 vaccine at the UeS
344 neighborhood vaccination site between February 1 and May 19, 2021, of which 11,098
345 (91.7%) received at least one vaccine dose at the neighborhood site; the proportion of persons
346

347 registered who received at least one vaccine dose at the neighborhood site did not differ
348 according to age, sex or ethnicity (**Supplementary Table 1**). In total, 20,792 COVID-19
349 vaccine doses were administered to community members ≥ 16 years old during the evaluation
350 period.

351 The characteristics of 11,098 individuals receiving at least one COVID-19 vaccination at
352 the UeS neighborhood vaccination site are shown in **Table 2**. Vaccine recipients had a median
353 age of 43 (IQR, 32-56) years, 53.9% were male, and 70.5% were Latinx, 7.7% were Asian,
354 2.4% were black and 14.1% were white; 50.7% and 14.3% were either a first- or second-
355 generation immigrant, respectively. The majority of clients receiving a vaccine dose worked in
356 front-facing retail jobs and 61.0% of individuals had an annual household income of less than
357 \$50,000 per year (**Table 2**). More than one-third (36.9%) of clients did not have health
358 insurance and nearly half (46.3%) did not have an established primary care provider. Latinx
359 clients were substantially more likely than non-Latinx clients to have an annual household
360 income of less than \$50,000 a year (76.1% vs. 33.5%), be a first-generation immigrant (60.2%
361 vs. 30.1%), not have health insurance (47.3% vs. 16.0%), and not have access to primary
362 healthcare services (62.4% vs. 36.2%) (**Table 2**).

363 Next, we assessed COVID-19 vaccine coverage associated with the UeS Neighborhood
364 vaccination site. Among all eligible individuals (≥ 16 years old) estimated to be living in the
365 Mission District (zip code 94110), 5.7% ($n=3,590/62,452$) received at least one vaccine dose at
366 the neighborhood site; this included 11.9% ($n=2,484/20,859$) of the estimated number of Latinx
367 residents. Compared to the ethnic makeup of the Mission District, clients receiving at least one
368 vaccine dose at the neighborhood vaccination site were far more likely to be Latinx (70.5% vs.
369 33.4%) and far less likely to be white (14.1% vs. 44.8%) (**Figure 3**). While the neighborhood
370 site was based in the Mission District (zip code 94110), it had broad geographic reach, such
371 that less than one-third (32.3%) of all vaccine recipients resided in the Mission District (**Figure**
372 **4**); the vaccination site was accessed by a large number of predominantly Latinx individuals
373 residing and working throughout San Francisco and the Bay Area (**Supplementary Table 2**).
374 The neighborhood site also appeared to reach persons residing predominantly in the
375 neighborhoods of San Francisco that have been the most impacted by COVID-19 (**Figure 4,**
376 **Supplementary Figure 1, Supplementary Table 2**).

377

378 **Factors influencing clients to get vaccinated at neighborhood site**

379 Of 3,597 clients offered to take a survey about their vaccination experiences, 997 (27.7%)
380 completed the survey; compared to those who declined survey participation, survey
381 respondents were slightly younger and less likely to be Latinx (**Supplementary Table 3**).
382 Clients who were vaccinated at the UeS neighborhood vaccination site reported that they had
383 heard about or became aware of the site in a number of different ways (**Table 3**). Clients most
384 commonly found out about the site was from a friend, family member or co-worker (36.1%); a
385 large number of clients also reported receiving a text invitation on their phone (21.0%), walking
386 past the community-based site (17.8%) and receiving a direct referral from the nearby UeS
387 COVID-19 testing site (11.4%). Clients less commonly cited having been made aware of the
388 site through outreach from a community volunteer, or via a flyer, social media, or news sources
389 (**Table 3**). Notably, the proportion of clients stating that they heard about the site through a
390 friend or family member did not differ substantially by ethnicity (37.8% vs. 32.6%; **Table 3**).
391 However, compared to non-Latinx clients, Latinx clients were more likely to report hearing
392 about the site by directly passing by it in the neighborhood, and were less likely to have
393 received a direct text invitation (**Table 3**).

394 Clients reported that their single most important reason for choosing to get vaccinated
395 at the UeS neighborhood site was (1) because it was in their neighborhood (29.0%), (2)
396 because scheduling was easy and convenient (26.7%) and (3) because someone they trusted
397 had recommended it to them (18.0%) (**Table 3**). Latinx clients were more likely to choose the
398 site because of its bilingual staff compared non-Latinx clients but were less likely to cite the
399 ease and efficiency of scheduling as an enabling factor (**Table 3**).

400

401 **Implementation**

402

403 **Fidelity**

404 Overall, we were able to deliver each of the components of the “Motivate, Vaccinate, and
405 Activate” strategy as originally intended. As intended by design, the strategy was adapted in
406 response to rapid evolving eligibility criteria and site capacity (**Table 4**). Most adaptations to
407 the strategy occurred early on and were related to the “Vaccinate” component of the strategy.

408 We aimed to provide timely vaccination to all community members who were eligible and
409 wished to be vaccinated at the neighborhood site. While that was often possible, at times,
410 peaks in demand exceeded our capacity to provide immediate vaccinations. In order to not
411 delay vaccination among highly motivated community members, we partnered and worked
412 closely with a local safety net hospital to extend the reach of our strategy by facilitating
413 referrals for typically either same-day or next-day vaccination appointments. There were two
414 key features of this adaption: (1) free transportation was provided to any referred client who
415 needed it and (2) a UeS community team member went with referred clients or met them at the
416 hospital to provide support and help navigate any additional barriers to getting vaccinated.
417 While complete estimates are not available, more than 2,400 additional community members
418 were directly referred and scheduled for vaccination through this strategy, including
419 approximately 850 during the second week of March 2021. We believe that this was a key
420 adaptation that was needed as to not undermine the overall effectiveness of our strategy,
421 however, it was only required for less than four weeks.

422

423 **Acceptability**

424 The UeS neighborhood site was highly acceptable to clients who were vaccinated there. Of
425 997 clients completing the survey, 98.6% stated that they would recommend the site to others;
426 this did not differ between Latinx and non-Latinx clients (**Supplementary Table 4**). Clients
427 were more likely to say that they would recommend the site to family members (82.1%) and
428 friends (84.5%) than to co-workers (67.1%) (**Supplementary Table 4**).

429 The features of the neighborhood vaccination site and their vaccination experience that
430 clients stated that they liked the most were (1) the friendly and professional staff (40.3%), and
431 (2) that the process was fast and efficient (32.8%) (**Supplementary Table 4**). Latinx clients
432 were more likely to say that staff friendliness and professionalism was the site feature they
433 liked the most about the neighborhood site, while non-Latinx clients were more likely to state
434 they most liked the overall efficiency of the process (on average wait time was less than 5
435 minutes from check in) (**Figure 5a**). Clients stated that they liked and appreciated many
436 additional features of the neighborhood vaccination site and preferences differed by ethnicity
437 (**Figure 5b, Supplementary Table 4**). Latinx clients were more likely to state they liked that
438 the staff was bilingual. Notably, more than a quarter of Latinx (26.3%) and non-Latinx clients

439 (30.5%) reported that they liked that they did not need to show documentation of residency or
440 proof of vaccine eligibility. Very few clients reported any aspects of their experience that they
441 disliked. A few clients noted that they had experienced long wait times but were not bothered
442 by it, while one client felt that the outdoor setting was not private enough. Several people
443 responded that the site experience could be further improved by providing onsite toilets.

444

445 **Maintenance**

446 Several adaptations were made during the early implementation period, but there were very
447 few subsequent adaptations and the “Motivate, Vaccinate, and Activate” strategy was
448 delivered with high fidelity over time (**Table 4**). An important feature that allowed us to continue
449 to deliver our strategy with fidelity was that there was consistent staffing that helped facilitate
450 group communication and cohesiveness.

451 As the eligibility for COVID-19 vaccination shifted over time in San Francisco, the
452 “Motivate, Vaccinate, and Activate” strategy was able to continue to reach and facilitate
453 vaccination of newly eligible community members (**Figure 6a**). Notably, despite evolution of
454 the eligibility criteria over time, the large majority of clients reached throughout the entire
455 implementation period were Latinx (**Figure 6b**). While the number of new individuals
456 vaccinated in May 2021 declined (mirroring local and national trends) (**Figure 6a**), the
457 proportion of daily vaccinations that were among Latinx individuals increased (**Figure 6b**).

458

459 **Effectiveness**

460 **Indicators of positive behavior change**

461 There were 58.4% of clients that said they got vaccinated sooner than they otherwise would
462 have had the neighborhood vaccination site not existed; this included 56.1% of Latinx clients
463 and 63.2% of non-Latinx clients (**Table 5**). After their experiences at the neighborhood
464 vaccination site, 90.1% of clients said they were more likely to recommend getting vaccinated
465 to family members, friends, and co-workers; this did not meaningfully differ by ethnicity (**Table**
466 **5**).

467 Approximately 40% (40.3%) of clients said that they knew at least one person that had yet to
468 be vaccinated; this was slightly higher among Latinx clients than non-Latinx clients (42.9% vs.
469 34.7%). Of clients who reported knowing unvaccinated individuals, 64.6% reported knowing 3
470 or more. Among clients who received both vaccine doses (n=729), 91.0% said that after their
471 first vaccination experience, they personally reached out to at least one unvaccinated person
472 they knew to recommend COVID-19 vaccination; Latinx clients were more likely than non-
473 Latinx clients to reach out and recommend vaccination to 3 or more persons (65.3% vs.
474 55.9%; **Table 5**). Notably, 83.0% of clients stated that they were aware of at least 1 family

475 member, friend or co-worker who got vaccinated as a result of their direct outreach; Latinx
476 clients were more likely than non-Latinx persons to report that 3 or more persons got
477 vaccinated a result of their influence (46.7% vs. 36.5%; **Table 5**).

478 Next, we evaluated the proportion of clients receiving their first COVID-19 vaccine dose
479 at the UeS neighborhood site, who also completed their second vaccine dose. Among 9,305
480 clients with at least 4 weeks of follow-up time since their first vaccine dose, 9,152 (98.4%)
481 completed their second dose; the proportion of clients completing both vaccine doses did not
482 differ according to age, sex or ethnicity (**Supplementary Table 5**).

483

484 Discussion

485 From the onset of the COVID-19 pandemic, there have been stark racial and ethnic disparities
486 of populations infected and vaccinated, reflecting known health inequities in the United States
487 [7,8]. In the setting of a rapidly moving pandemic such as COVID-19, the challenge is how to
488 overcome in a short time period the decades of disparate access to care and resulting mistrust
489 among vulnerable populations in a way that improves health outcomes and can lead to
490 sustained gains in health delivery. Via a community, academic and public health partnership
491 (Unidos en Salud) we developed and evaluated a community-based, “Motivate, Vaccinate, and
492 Activate” strategy. We sought to increase uptake of COVID-19 vaccination among Latinx
493 persons and to activate clients to be community vaccine ambassadors within their social
494 networks.

495 We effectively reached the target population—70% of more than 11,000 vaccine
496 recipients during the evaluation period were Latinx, the majority of whom were first generation
497 immigrants with a household income of less than \$50,000 and without a primary care provider.
498 The geographic reach extended to the Latinx community beyond the surrounding
499 neighborhood to the Southeast sector of San Francisco, the area with the most COVID-19
500 cases in San Francisco [30]. The vaccination program was highly acceptable, with 99% of
501 clients reporting they would recommend the site to others. The program was also highly
502 effective, as 58% of people reported that they were vaccinated sooner because of the
503 program, and among those who received both vaccine doses, over 90% of clients personally
504 reached out to at least one person in their social network to recommend COVID-19
505 vaccination. Additionally, 98% of clients completed both vaccine doses, which is higher than
506 early national estimates of 88% [29]. To our knowledge, this is the first evaluation of the
507 implementation and effectiveness of a multicomponent community-based vaccination program
508 designed to reach the Latinx community.

509 Our data suggest that efforts to address access and trust-related barriers underlie the
510 effectiveness of the program. Access-related barriers drive a large portion of the COVID-19
511 vaccination disparities between Latinx and non-Latinx White people [10]. Our site was
512 embedded in the San Francisco Mayor’s strategy to offer vaccination through multiple venues,
513 including mass vaccination sites, health care and nursing home settings, pharmacies, and
514 community sites. Local community sites can remove transportation barriers inherent to mass

515 sites, mitigate issues of trust, and reach persons who are not actively connected with a formal
516 health system. Despite all San Franciscan's being eligible for health care, many vulnerable
517 community members do not identify as having a primary physician or health insurance.
518 Reasons may include the many administrative steps required for health care registration,
519 language barriers, lack of outreach and navigation services on the part of health institutions
520 and mistrust of government institutions based on past negative experiences. Clients at our
521 vaccine site reported geographic convenience outside of a hospital setting and ease of
522 registration (computer access not required) among their top reasons for choosing the
523 neighborhood vaccine site. Time away from work for front-line workers is a major consideration
524 for engagement in health care. The speed and efficiency of the experience was among the top
525 three factors that people appreciated about the site.

526 Our survey results are consistent with recent national surveys that highlighted the
527 importance of access-related barriers among Latinx persons who had not yet received the
528 vaccine, with concerns about missing work, transport to the site, and information gaps about
529 cost and impact on legal status [10]. Placing vaccine sites in central locations such as such as
530 in Grand Central Station in New York, or trusted community sites such as churches has also
531 yielded promising results [31–34]. While convenience was an important feature of the vaccine
532 site, it alone is likely insufficient, and ensuring trust in the vaccine itself is the first step to
533 getting people to come to the site.

534 In the “Motivate” component of our model, we used multiple approaches to address
535 concerns voiced by Latinx persons, drawn both from prior work of Unidos en Salud in San
536 Francisco and from national surveys, including safety, cost, eligibility, and effects on
537 immigration status [9,10]. Strategies to address these concerns included high-touch methods
538 such as ‘door-to-door’ vaccine education and registration and mobilization by trusted
539 community leaders via their social networks. We also employed less resource-intensive
540 vaccine promotion strategies such as Spanish-language media, in which Unidos En Salud
541 community leaders provided information and answered questions on COVID-19 vaccines. Our
542 community team posted flyers in the neighborhood, including at local businesses, and handed
543 out educational information about vaccines at our adjacent COVID-19 testing site (Table 1).

544 Our data highlight the importance of trusted messengers in the decision to come to the
545 community vaccine site [23]. Nearly 20% of clients said that the most important factor in their

546 decision to come to the vaccine site was because someone they trusted recommended it to
547 them, as opposed to less than 5% who heard about the site through a flyer in the community or
548 media campaigns. These data are consistent with prior data on the positive impact of door to-
549 door outreach [35] and endorsements from trusted community members on increasing
550 vaccination from influenza [36], childhood vaccines [37], and HPV vaccines [38]. Our findings
551 are also consistent with a multicomponent intervention involving mobile clinics and religious
552 leaders as vaccine ambassadors that led to high uptake among COVID-19 vaccines among
553 Black people living in a community in Southern California [34]. Multi-pronged approaches to
554 community-led education and outreach can increase trust in vaccine safety, effectiveness, and
555 the healthcare system, and are fundamental to facilitating forward movement along the entire
556 continuum of vaccine hesitancy [36–41].

557 Paramount to our strategy was to create a convenient, language-concordant, and
558 welcoming vaccination site. The client experience at the site, including efficiency, and access
559 to bilingual staff and health education in the post-vaccination area likely amplified trust in both
560 the vaccination site and the vaccine itself. This was evidenced by the finding that 99% of
561 vaccinated clients reported that they would recommend the site to their friends or family
562 members, and that nearly two-thirds recommended COVID-19 vaccination to 3 or more people
563 in their social network. Additionally, friendly and professional staff were the features Latinx
564 clients liked most about the neighborhood vaccination site.

565 Peer-referrals and social network interventions can increase trust in marginalized
566 communities and rapidly diffuse innovations. It was notable that even when San Francisco
567 exceeded more than 75% coverage of COVID-19 vaccination among residents ≥ 16 years old,
568 the social networks of people at our vaccine site still included large numbers of unvaccinated
569 friends and family members. That our clients most frequently heard about the UeS
570 neighborhood vaccination site from a friend or family member (36%) and more than 80% of
571 vaccinated clients then positively influenced an unvaccinated person they knew to get
572 vaccinated strongly supports the value of social network interventions in our setting and their
573 potential to build trust and reach unvaccinated people. Our community health team, a bilingual
574 bicultural team of community members, provided additional education about COVID-19
575 vaccines, testing, answered related questions and shared their own experiences about
576 encouraging friends and loved ones to get vaccinated. We hypothesize that these positive

577 interactions addressed information gaps and empowered people to become ‘vaccine
578 ambassadors,’ and reach out to their unvaccinated family members, friends and co-workers.
579 These findings build upon a growing body of literature demonstrating the effectiveness of
580 social network interventions for positive health promotion, including prevention strategies for
581 HIV (PrEP), STI and HIV testing, as well as other health behaviors and outcomes including
582 smoking cessation, alcohol misuse, and improving hemoglobin A1c levels in persons with
583 diabetes [42].

584 Although most factors influencing vaccination at our site were similar across race and
585 ethnicity, Latinx compared to non-Latinx were more likely to report that bilingual staff were an
586 important factor for choosing the site. This highlights the importance of language and cultural
587 concordance throughout all stages from community outreach and mobilization, through
588 vaccination to address structural barriers, information-gaps about vaccine eligibility, and
589 perceptions that the COVID-19 vaccine costs money and can impact one’s immigration status.
590 Additionally, requirements to provide documentation increases access-related barriers,
591 especially for first generation immigrants and people who work informal jobs. Over 40% of
592 Latinx persons in a national survey cited concern about having to provide documentation and
593 40% feared that the process would impact their legal status [10]. To address these concerns
594 and to lower the barrier to vaccinations, we did not require identification or proof of vaccine
595 eligibility at our vaccine site, and approximately one third of clients reported that they
596 appreciated this feature. Removing the requirement for identification or proof of residence or
597 employment should be considered in the design of low-barrier vaccine sites.

598 Our implementation strategy quickly adapted to changes in vaccine eligibility which
599 created surges in demand over time. (Table 4). Initially vaccine demand exceeded supply. To
600 address this need and not turn people away, we expanded our vaccine site to also include a
601 vaccine navigation hub and become a gateway to a higher volume vaccine site at the safety-
602 net hospital nearby. To facilitate access to larger vaccine sites, we arranged free
603 transportation, helped schedule appointments on-site, and had our community workers
604 accompany clients to the hospital site in order to overcome mistrust and fear of formal health
605 care systems. Later, as supply exceeded demand, we shifted our mobilization strategy away
606 from posting flyers in the community and harnessing Spanish language media, to more
607 individualized ‘one-on-one’ discussions and also a focus on a social network-based approach

608 as persons at our vaccine still had a large number of people in their network who remained
609 unvaccinated. Financial and non-financial incentives can be effective in promoting vaccinations
610 and adaptations that include incentives are worth further consideration and study [37,43,44].

611 The evaluation of our program has some limitations. Our methods underestimate the
612 program's reach, as we could not quantify the number of people who were influenced by our
613 multifaceted, community-based demand generation activities, but who were vaccinated at a
614 different site. Additionally, our reported reach does not include over 2,000 direct referrals to the
615 vaccination site at the nearby county hospital. Secondly, the structured survey on clients'
616 experiences was only completed during the period of general eligibility, and experiences may
617 have differed compared to the beginning of the program. This can also be seen as a strength,
618 as the findings are more generalizable to the current vaccine landscape—where supply is
619 greater than demand and all adults are eligible for the vaccine. As with most multi-component
620 interventions, we are unable to fully disentangle the relative effects of the different components
621 and subcomponents of the overall strategy. There are also some limitations to our
622 measurements of effectiveness; though a high proportion of people reported that someone
623 they referred received a vaccine, we could not measure this directly. However, even if the peer
624 referral did not result in a vaccination, it is likely that the referral served as a nudge further
625 down the continuum towards vaccine confidence.

626 In conclusion, our “Motivate, Vaccinate, and Activate” vaccine promotion strategy
627 reached a high proportion of Latinx residents in San Francisco. We attribute the success of the
628 program to demand generation through trusted messengers and social networks, multi-faceted
629 and adaptable mobilization strategies, and a convenient and welcoming neighborhood vaccine
630 site. Our Unidos en Salud community, academic, and public health partnership and co-design
631 was fundamental to the program and cannot be underestimated. Though this program was
632 geared towards addressing the specific barriers and needs of the Latinx community in San
633 Francisco, the fundamental pillars of this program can be adapted to other local contexts.

634
635
636

637 **Acknowledgements**

638 We would like to thank the community members who participated in this initiative and the many
639 vaccination site staff, community ambassadors, and volunteers. We thank the Chan
640 Zuckerberg Initiative, Supervisor Hillary Ronen, Mayor London Breed, The San Francisco
641 Department of Public Health and Dr. Grant Colfax, Dr. Naveena Bobba, Dr. Susan Phillips, Dr.
642 Mary Mercer, Emily Reingold, and Dr. Ellen Chen. We gratefully acknowledge the San
643 Francisco Latino Task Force, Bay Area Phlebotomy and Laboratory Services (BayPLS), Stacy
644 Powers and BRAVA for Women in the Arts, Bevan Dufty and the BART team, PrimaryBio
645 COVID-19 Testing Platform, Dr. Rachel Stern, Phillipa Doyle, and Ricardo Duarte from
646 Zuckerberg San Francisco General Hospital, Dr. Jessica Briggs and Dr. Susa Coffey from
647 UCSF, and Dara Fonseca, Jocelin Payan, and Jack Fukushima from Unidos en Salud. We
648 also would like to thank Mike Kai Chen for the use of his photographs in this manuscript.

649

650 **Financial disclosure statement**

651 This work was supported by University of California, San Francisco, the Chan Zuckerberg
652 Initiative, and the San Francisco Department of Public Health. A.D.K and L.R. was funded by
653 T32 AI060530. The funders had no role in study design, data collection and analysis, decision
654 to publish, or preparation of the manuscript.

655

656 **Competing interests**

657 None of the authors have any competing interests to declare.

658 **References**

659

- 660 1. Chamie G, Marquez C, Crawford E, Peng J, Petersen M, Schwab D, et al. SARS-CoV-2
661 Community Transmission disproportionately affects Latinx population during Shelter-in-Place
662 in San Francisco. *Clin Infect Dis*. 2020; ciaa1234-. doi:10.1093/cid/ciaa1234
- 663 2. Gil RM, Marcelin JR, Zuniga-Blanco B, Marquez C, Mathew T, Piggott DA. COVID-19
664 Pandemic: Disparate Health Impact on the Hispanic/Latinx Population in the United States. *J*
665 *Infect Dis*. 2020; jiaa474-. doi:10.1093/infdis/jiaa474
- 666 3. Kullar R, Marcelin JR, Swartz TH, Piggott DA, Gil RM, Mathew TA, et al. Racial Disparity of
667 Coronavirus Disease 2019 (COVID-19) in African American Communities. *J Infect Dis*.
668 2020;222: jiaa372-. doi:10.1093/infdis/jiaa372
- 669 4. Rodriguez-Diaz CE, Guilamo-Ramos V, Mena L, Hall E, Honermann B, Crowley JS, et al.
670 Risk for COVID-19 infection and death among Latinos in the United States: examining
671 heterogeneity in transmission dynamics. *Ann Epidemiol*. 2020;52: 46-53.e2.
672 doi:10.1016/j.annepidem.2020.07.007
- 673 5. Bibbins-Domingo K, Petersen M, Havlir D. Taking Vaccine to Where the Virus Is—Equity
674 and Effectiveness in Coronavirus Vaccinations. *Jama Heal Forum*. 2021;2: e210213.
675 doi:10.1001/jamahealthforum.2021.0213
- 676 6. Hooper MW, Nápoles AM, Pérez-Stable EJ. No Populations Left Behind: Vaccine Hesitancy
677 and Equitable Diffusion of Effective COVID-19 Vaccines. *J Gen Intern Med*. 2021; 1–4.
678 doi:10.1007/s11606-021-06698-5
- 679 7. Ndugga N, Pham O, Hill L, Artiga S, Alam R, Parker N. Latest Data on COVID-19
680 Vaccinations Race/Ethnicity. Available at: [https://www.kff.org/coronavirus-covid-19/issue-](https://www.kff.org/coronavirus-covid-19/issue-brief/latest-data-on-covid-19-vaccinations-race-ethnicity/)
681 [brief/latest-data-on-covid-19-vaccinations-race-ethnicity/](https://www.kff.org/coronavirus-covid-19/issue-brief/latest-data-on-covid-19-vaccinations-race-ethnicity/). Accessed May 20, 2021.
- 682 8. California Department of Public Health. Vaccination progress data - Coronavirus COVID-19
683 Response. Available at: <https://covid19.ca.gov/vaccination-progress-data/>. Accessed May 20,
684 2021.
- 685 9. Peng J, Marquez C, Rubio L, Chamie G, Jones D, Jacobo J, et al. High likelihood of
686 accepting COVID-19 vaccine in a Latinx community at high SARS-CoV2 risk in San Francisco.
687 *Open Forum Infect Dis*. 2021; ofab202-. doi:10.1093/ofid/ofab202
- 688 10. Kaiser Family Foundation. KFF Covid-19 vaccine monitor: April 2021. Available at:
689 <https://www.kff.org/coronavirus-covid-19/poll-finding/kff-covid-19-vaccine-monitor-april-2021/>.
690 Accessed May 21, 2021.
- 691 11. Williams DR, Cooper LA. Reducing Racial Inequities in Health: Using What We Already
692 Know to Take Action. *Int J Environ Res Pu*. 2019;16: 606. doi:10.3390/ijerph16040606

- 693 12. Shelton RC, Chambers DA, Glasgow RE. An Extension of RE-AIM to Enhance
694 Sustainability: Addressing Dynamic Context and Promoting Health Equity Over Time. *Frontiers*
695 *Public Heal.* 2020;8: 134. doi:10.3389/fpubh.2020.00134
- 696 13. Urban Displacement Project. Rising Housing Costs and Re-Segregation in San Francisco.
697 2018 Sep. Available: https://www.urbandisplacement.org/sites/default/files/images/sf_final.pdf.
698 Accessed May 21, 2021.
- 699 14. Census Reporter. ZIP Code Tabulation Area 94110, San Francisco, CA. Available at:
700 <https://censusreporter.org/profiles/86000US94110-94110/>. Accessed May 21, 2021.
- 701 15. Pilarowski G, Lebel P, Sunshine S, Liu J, Crawford E, Marquez C, et al. Performance
702 characteristics of a rapid SARS-CoV-2 antigen detection assay at a public plaza testing site in
703 San Francisco. *J Infect Dis.* 2021;223: jiaa802-. doi:10.1093/infdis/jiaa802
- 704 16. Kerkhoff AD, Sachdev D, Mizany S, Rojas S, Gandhi M, Peng J, et al. Evaluation of a
705 novel community-based COVID-19 ‘Test-to-Care’ model for low-income populations. *Plos One.*
706 2020;15: e0239400. doi:10.1371/journal.pone.0239400
- 707 17. Rubio LA, Peng J, Rojas S, Rojas S, Crawford E, Black D, et al. The COVID-19 Symptom
708 to Isolation Cascade in a Latinx Community: A Call to Action. *Open Forum Infect Dis.* 2021;8:
709 ofab023. doi:10.1093/ofid/ofab023
- 710 18. Fields J, Gutierrez RJ, Marquez C, Rhoads K, Kushel M, Fernandez A, et al. Community-
711 Academic Partnerships to Address COVID-19 Inequities: Lessons from the San Francisco Bay
712 Area. *NEJM Catal.* 2021. In press.
- 713 19. The San Francisco Latino Task Force on COVID-19. Available at:
714 <https://www.ltfrespuestalatina.com/>. Accessed May 21, 2021.
- 715 20. Porter CM. Revisiting Precede–Proceed: A leading model for ecological and ethical health
716 promotion. *Health Educ J.* 2016;75: 753–764. doi:10.1177/0017896915619645
- 717 21. Funnell MM. Peer-based behavioural strategies to improve chronic disease self-
718 management and clinical outcomes: evidence, logistics, evaluation considerations and needs
719 for future research. *Fam Pract.* 2010;27: i17–i22. doi:10.1093/fampra/cmp027
- 720 22. Fisher EB, Ballesteros J, Bhushan N, Coufal MM, Kowitt SD, McDonough AM, et al. Key
721 Features of Peer Support In Chronic Disease Prevention And Management. *Health Affair.*
722 2017;34: 1523–1530. doi:10.1377/hlthaff.2015.0365
- 723 23. National Academies of Sciences and Engineering Medicine. Strategies for Building
724 Confidence in the COVID-19 Vaccines. Available at:
725 [https://www.nap.edu/catalog/26068/strategies-for-building-confidence-in-the-covid-19-](https://www.nap.edu/catalog/26068/strategies-for-building-confidence-in-the-covid-19-vaccines)
726 [vaccines](https://www.nap.edu/catalog/26068/strategies-for-building-confidence-in-the-covid-19-vaccines). Accessed May 21, 2021.

- 727 24. Glasgow RE, Harden SM, Gaglio B, Rabin B, Smith ML, Porter GC, et al. RE-AIM Planning
728 and Evaluation Framework: Adapting to New Science and Practice With a 20-Year Review.
729 *Frontiers Public Heal.* 2019;7: 64. doi:10.3389/fpubh.2019.00064
- 730 25. Polack FP, Thomas SJ, Kitchin N, Absalon J, Gurtman A, Lockhart S, et al. Safety and
731 Efficacy of the BNT162b2 mRNA Covid-19 Vaccine. *New Engl J Med.* 2020;383: 2603–2615.
732 doi:10.1056/nejmoa2034577
- 733 26. Baden LR, Sahly HME, Essink B, Kotloff K, Frey S, Novak R, et al. Efficacy and Safety of
734 the mRNA-1273 SARS-CoV-2 Vaccine. *New Engl J Med.* 2020;384: 403–416.
735 doi:10.1056/nejmoa2035389
- 736 27. Haas EJ, Angulo FJ, McLaughlin JM, Anis E, Singer SR, Khan F, et al. Impact and
737 effectiveness of mRNA BNT162b2 vaccine against SARS-CoV-2 infections and COVID-19
738 cases, hospitalisations, and deaths following a nationwide vaccination campaign in Israel: an
739 observational study using national surveillance data. *Lancet.* 2021;397: 1819–1829.
740 doi:10.1016/s0140-6736(21)00947-8
- 741 28. Benenson S, Oster Y, Cohen MJ, Nir-Paz R. BNT162b2 mRNA Covid-19 Vaccine
742 Effectiveness among Health Care Workers. *New Engl J Med.* 2021;384: 1775–1777.
743 doi:10.1056/nejmc2101951
- 744 29. Kriss JL, Reynolds LE, Wang A, Stokley S, Cole MM, Harris LQ, et al. COVID-19 Vaccine
745 Second-Dose Completion and Interval Between First and Second Doses Among Vaccinated
746 Persons — United States, December 14, 2020–February 14, 2021. *Morbidity Mortal Wkly Rep.*
747 2021;70: 389–395. doi:10.15585/mmwr.mm7011e2
- 748 30. San Francisco Department of Public Health: COVID-19 Data and Reports. Available at:
749 <https://data.sfgov.org/stories/s/fjki-2fab>. Accessed May 23, 2021.
- 750 31. Cabanatuan M. Line around the block for COVID vaccinations in East Oakland. *San*
751 *Francisco Chronicle.* 4 Apr 2021. Available: <https://www.sfchronicle.com/local/article/Line-around-the-block-for-COVID-shots-in-East-16075137.php>
- 753 32. Zaveri M. New York will offer vaccines at some subway stops through a pilot program. *New*
754 *York Times.* 10 May 2021. Available: <https://www.nytimes.com/2021/05/10/nyregion/nyc-vaccine-subway.html>
- 756 33. Weiland N. In New Vaccination Push, Biden Leans on His ‘Community Corps.’ *New York*
757 *Times.* 16 May 2021. Available: <https://www.nytimes.com/2021/05/16/us/politics/coronavirus-vaccination.html>
- 759 34. Abdul-Mutakabbir JC, Casey S, Jews V, King A, Simmons K, Hogue MD, et al. A three-
760 tiered approach to address barriers to COVID-19 vaccine delivery in the Black community.
761 *Lancet Global Heal.* 2021;9: e749–e750. doi:10.1016/s2214-109x(21)00099-1

- 762 35. Centers for Disease Control and Prevention. Vaccine-preventable diseases: improving
763 vaccination coverage in children, adolescents, and adults. A report on recommendations from
764 the Task Force on Community Preventive Services. *Morb Mortal Wkly Rep.* 1999;48:1–15.
- 765 36. Peterson P, McNabb P, Maddali SR, Heath J, Santibañez S. Engaging Communities to
766 Reach Immigrant and Minority Populations: The Minnesota Immunization Networking Initiative
767 (MINI), 2006-2017. *Public Health Rep.* 2019;134: 241–248. doi:10.1177/0033354919834579
- 768 37. Banerjee AV, Duflo E, Glennerster R, Kothari D. Improving immunisation coverage in rural
769 India: clustered randomised controlled evaluation of immunisation campaigns with and without
770 incentives. *Bmj.* 2010;340: c2220. doi:10.1136/bmj.c2220
- 771 38. Gottvall M, Tydén T, Höglund AT, Larsson M. Knowledge of human papillomavirus among
772 high school students can be increased by an educational intervention. *Int J Std Aids.* 2010;21:
773 558–562. doi:10.1258/ijsa.2010.010063
- 774 39. Jarrett C, Wilson R, O’Leary M, Eckersberger E, Larson HJ, Hesitancy the SWG on V.
775 Strategies for addressing vaccine hesitancy – A systematic review. *Vaccine.* 2015;33: 4180–
776 4190. doi:10.1016/j.vaccine.2015.04.040
- 777 40. MacDonald NE, Hesitancy the SWG on V. Vaccine hesitancy: Definition, scope and
778 determinants. *Vaccine.* 2015;33: 4161–4164. doi:10.1016/j.vaccine.2015.04.036
- 779 41. Force TAHCT, Spleen AM, Kluhsman BC, Clark AD, Dignan MB, Lengerich EJ. An
780 Increase in HPV-Related Knowledge and Vaccination Intent Among Parental and Non-parental
781 Caregivers of Adolescent Girls, Age 9–17 Years, in Appalachian Pennsylvania. *J Cancer Educ.*
782 2012;27: 312–319. doi:10.1007/s13187-011-0294-z
- 783 42. Hunter RF, Haye K de la, Murray JM, Badham J, Valente TW, Clarke M, et al. Social
784 network interventions for health behaviours and outcomes: A systematic review and meta-
785 analysis. *PLOS Med.* 2019;16: e1002890. doi:10.1371/journal.pmed.1002890
- 786 43. Vavreck L. \$100 as Incentive to Get a Shot? Experiment Suggests It Can Pay Off. *New*
787 *York Times.* 4 Mar 2021. Available: [https://www.nytimes.com/2021/05/04/upshot/vaccine-](https://www.nytimes.com/2021/05/04/upshot/vaccine-incentive-experiment.html)
788 [incentive-experiment.html](https://www.nytimes.com/2021/05/04/upshot/vaccine-incentive-experiment.html)
- 789 44. McNamara D. Winning Idea: Ohio Vaccine Lottery Shows Some Incentives May Work.
790 *Medscape Medical News.* 18 May 2021.

791

Table 1. Description of the “Motivate, Vaccinate, and Activate” Strategy to address predisposing, enabling and reinforcing factors to COVID-19 vaccination among low-income Latinx individuals.

Influencing factors	Barriers to COVID-19 vaccination	Strategy component	Description of intervention activities that directly address barriers
<p>Predisposing (Knowledge, attitudes, beliefs, skills, values, self-efficacy)</p>	<p>Questions and concerns about vaccine safety and efficacy:</p> <ul style="list-style-type: none"> • Vaccine efficacy and impact on transmission. • Short- and long-term side-effects and safety • Speed of development and approval process. <p>Trust:</p> <ul style="list-style-type: none"> • Concerns about impact on public charge and immigration status. • Mistrust of healthcare systems or government. <p>Knowledge and awareness of eligibility requirements:</p> <ul style="list-style-type: none"> • Unsure when eligible and whether proof of eligibility needed. • Questions about whether eligibility applied to people with comorbid conditions. • Questions about whether people with history of COVID-19 were eligible. • Unsure where to get the COVID-19 vaccine. • Availability of language concordant messaging and registration. 	<p>Motivate (Community mobilization and demand generation activities)</p>	<ul style="list-style-type: none"> • Trusted and known bilingual or monolingual Spanish-speaking Latinx community members provided direct outreach, including going door-to-door to businesses and senior living facilities, giving interviews on Spanish language radio shows, and hosting vaccine townhalls to raise awareness about vaccine eligibility, provide vaccine-related education and raise awareness about the UeS vaccination site. • Community health workers provided face-to-face outreach and vaccine education hand-outs to people attending UeS neighborhood COVID-19 testing site starting one-month before the vaccination site opened. • Community-based organizations able to directly schedule eligible persons that they service (e.g., able to gather and submit list of older clients who wanted to receive a vaccine). • Sunday ‘Cafecitos’ across from vaccination site where community members could walk up and ask questions to Latinx physicians while enjoying pan dulce and coffee. • Text messages and site information sent to all clients who had ever been tested for COVID-19 at UeS community site as soon as they became eligible for COVID-19 vaccination. • Dissemination of information about benefits of vaccination, UeS vaccination site and eligibility via posters in the community, social media, community websites, local Spanish language radio stations and newspapers. These were updated throughout the implementation period as eligibility criteria changed. • Direct, vaccination referral from UeS COVID-19 testing site.
		<p>Vaccinate (Community-based, low-barrier, client-centered, vaccination site)</p>	<ul style="list-style-type: none"> • Vaccination site co-developed and run in partnership between trusted community-led organization (LTF) and UCSF which has deep roots in the community, working hand-in-hand to provide COVID-19 services since April 2020. • All site staff provided COVID-19 vaccine-related education and regular refresher trainings to be able to answer any community member/client questions or address any concerns. • Site staff largely mono- or bilingual Spanish speaking and all trained and refreshed on good customer service principles.
		<p>Activate (Leverage social networks to increase vaccine uptake)</p>	<ul style="list-style-type: none"> • Peer vaccine ambassadors speak with unvaccinated friends and family to provide COVID-19 vaccine, including its benefits, share their positive experiences at the neighborhood site, share information about how/where to register for vaccination at the neighborhood site, and recommend that they get vaccinated.
<p>Enabling (Availability and accessibility of resources, policies, laws)</p>	<ul style="list-style-type: none"> • No mobile phone/computer access to schedule vaccination appointments online. • Difficult to navigate online vaccination appointments. • Requirement to prove residency or vaccine eligibility for scheduling. • Requirement to prove eligibility. • No personal transportation. • Direct + indirect costs of time required to get scheduled and vaccinated (financial insecurity). • Lack of language/culturally-concordant messaging, registration and vaccination services. • No health insurance or not linked to primary healthcare services. 	<p>Vaccinate (Community-based, low-barrier, client-centered, vaccination site)</p>	<ul style="list-style-type: none"> • Vaccination site is community-based and conveniently located near a busy transport hub – “in the neighborhood.” • Outdoor, welcoming environment with all site staff well-trained and refreshed on good customer service principles, emphasizing kindness and helpfulness. • Culturally-tailored site with bicultural, bilingual staff, many of whom are local community members. • Low-barrier scheduling features included: <ul style="list-style-type: none"> ○ On-site registration 7 days a week ○ Self-attestation of meeting eligibility requirements, no requirement to show an ID to prove residency, or to prove vaccine eligibility or health insurance status. ○ Sunday appointments offered. ○ Offering walk-up appointments over time. • Close collaboration with SFDPH to ensure consistent vaccine supply and avoid appointment cancellation.
<p>Reinforcing (Social support, influence of peers, family members, and general community attitudes)</p>	<ul style="list-style-type: none"> • Lack of friends, family members, and coworkers, who are vaccinated and can serve as credible source for vaccine-related knowledge and experiences. • Lack of friends and family members loved ones/peers encouraging vaccination through empathy and support. 	<p>Activate (Leverage social networks to increase vaccine uptake)</p>	<ul style="list-style-type: none"> • Community health team members approach clients while waiting for 15-30 minutes <u>after</u> their vaccination. • Clients are counselled about side effects a person may expect. • Clients are then provided additional education about COVID-19 vaccines and any vaccine-related questions are answered. • Clients are then encouraged to reach out to unvaccinated family members and peers to provide COVID-19-related vaccine education, information about UeS vaccination site and personally recommend that they get vaccinated.

Table 2. Baseline characteristics of clients vaccinated at the Unidos en Salud neighborhood vaccination site, overall and according to ethnicity.

	Overall (N=11,098)	Latinx (n=7,809)	Not Latinx (n=3,289)
Median age, IQR	43 (32-56)	43 (32-55)	43 (32-58)
Age Category			
16-30	2530 (22.8%)	1814 (23.2%)	716 (21.8%)
31-50	4658 (42.0%)	3353 (42.9%)	1305 (39.7%)
50-64	2617 (23.6%)	1793 (23.0%)	824 (25.1%)
65 and older	1293 (11.7%)	849 (10.9%)	444 (13.5%)
Sex			
Female	4926 (44.4%)	3434 (44.0%)	1492 (45.4%)
Male	5978 (53.9%)	4303 (55.1%)	1675 (50.9%)
Non-binary/other	194 (1.7%)	72 (0.9%)	122 (3.7%)
Immigration classification[^]			
First-generation immigrant	149 (50.7%)	121 (60.2%)	28 (30.1%)
Second-generation immigrant	42 (14.3%)	29 (14.4%)	13 (14.0%)
Neither first- or second-generation immigrant	103 (35.0%)	51 (25.4%)	52 (55.9%)
Primary occupation[^]			
Food and beverage	162 (16.6%)	139 (21.3%)	23 (7.10%)
Tradesperson, cleaning, personal services	161 (16.5%)	136 (20.8%)	25 (7.7%)
Finance, sales and technology	140 (14.3%)	43 (6.6%)	97 (29.9%)
Retired/homemaker	41 (4.19%)	33 (5.1%)	8 (2.5%)
Unemployed	101 (10.3%)	68 (10.4%)	33 (10.2%)
Education	42 (4.3%)	31 (4.7%)	11 (3.4%)
Student	109 (11.1%)	84 (12.8%)	25 (7.7%)
Healthcare	22 (2.3%)	11 (1.7%)	11 (3.4%)
Other	200 (20.4%)	109 (16.7%)	91 (28.1%)
Annual household income[^]			
<\$50,000 per year	536 (61.0%)	431 (76.1%)	105 (33.5%)
\$50,000-100,000 per year	199 (22.6%)	107 (18.9%)	92 (29.4%)
>\$100,000 per year	144 (16.4%)	28 (5.0%)	116 (37.1%)
Health insurance[^]			
Yes	618 (63.1%)	344 (52.7%)	274 (84.0%)
No	361 (36.9%)	309 (47.3%)	52 (16.0%)
Health insurance type (if insured)[^]			
Public	181 (29.5%)	145 (42.6%)	36 (13.1%)
Private	391 (63.7%)	173 (50.9%)	218 (79.6%)
Unsure	42 (6.84%)	22 (6.5%)	20 (7.3%)
Primary care provider[^]			
Yes	451 (46.3%)	245 (37.6%)	206 (63.8%)
No	523 (53.7%)	406 (62.4%)	117 (36.2%)

Note: Age, sex, and ethnicity are drawn from programmatic data among all vaccinated clients between February 1 and May 19th, 2021 (n=11,098). [^]Represents the results of a survey among vaccinated clients aged ≥16 years old conducted after their first or second vaccine dose between May 2 and 19th, 2021 (n=997).

Table 3. Factors influencing and motivating clients to get vaccinated at the at the Unidos en Salud neighborhood site.

	Overall (n=997)	Latinx (n=669)	Not Latinx (n=328)	P-value
How clients heard about the site				
Told about it from a friend, family member, or co-worker	352 (36.1%)	248 (37.8%)	104 (32.6%)	<0.001
Received an invitation on their phone	205 (21.0%)	109 (16.6%)	96 (30.1%)	
Passed by the site	174 (17.8%)	144 (22.0%)	30 (9.4%)	
Referred from UeS testing site	111 (11.4%)	69 (10.5%)	42 (13.2%)	
Told about it by a community volunteer at their business or home	57 (5.9%)	35 (5.3%)	22 (6.9%)	
Saw a flyer for the site in the community	23 (2.4%)	13 (2.0%)	10 (3.1%)	
Saw information in the news	9 (0.9%)	7 (1.1%)	2 (0.6%)	
Saw information on social media	15 (1.5%)	8 (1.2%)	7 (2.2%)	
Other	29 (3.0%)	23 (3.5%)	6 (1.9%)	
Reasons clients chose the site				
Located in their neighborhood	251 (29.0%)	170 (29.3%)	81 (28.5%)	<0.001
Scheduling was easy, efficient and convenient	231 (26.7%)	130 (22.4%)	101 (35.6%)	
Someone they trusted either invited them or suggested it to them	156 (18.0%)	111 (19.1%)	45 (15.8%)	
Had a positive interaction with the UeS of LTF staff/volunteers	41 (4.7%)	32 (5.5%)	9 (3.2%)	
Tried to get vaccinated somewhere else but was unsuccessful	37 (4.3%)	19 (3.3%)	18 (6.3%)	
They were not aware of other options	46 (5.3%)	37 (6.4%)	9 (3.2%)	
Staff was bilingual	48 (5.6%)	45 (7.8%)	3 (1.1%)	
Prior positive experience at UeS neighborhood testing site	40 (4.6%)	28 (4.8%)	12 (4.2%)	
Other	15 (1.7%)	9 (1.6%)	6 (2.1%)	

Note: All data is drawn from a survey among vaccinated clients aged ≥ 16 years old conducted after their first or second vaccine dose between May 2 and 19th, 2021 (n=997).

Table 4. Adaptations to the “Motivate, Vaccinate and Activate” strategy components during the implementation period from February 1 through May 19, 2021.

Strategy component	Original design / aim	Description of adaptation(s) made	Was adaptation planned or unplanned?	When was adaptation made?	Why was adaptation made?
Motivate (Community mobilization and demand generation activities)	Multi-method outreach approach to mobilize community members and generate demand for COVID-19 vaccination.	<ul style="list-style-type: none"> • We initially focused on direct recruitment from CBO networks, those eligible on our testing lists, and in-person registration at the site (capitalizing on it being located at a busy transport hub). • As eligibility expanded, we began undertaking direct sign ups at other sites (i.e., food hubs, grocery stores). • We also began providing flyers/cards with QR codes to sign-up for vaccination at key locations (i.e., food hubs, school drop off/pick up) • Later, we began promoting a direct sign-up link (e.g., via community signage, websites) for anyone to register. 	Planned	Throughout the implementation period	<ul style="list-style-type: none"> • To address changing vaccine eligibility. • To maintain demand for vaccination.
Vaccinate (Community-based, low-barrier, client-centered, vaccination site)	Provide vaccinations 4 days a week without any unplanned closures in order to avoid the inconvenience of rescheduling among socioeconomically vulnerable individuals.	<ul style="list-style-type: none"> • Infrequently needed to close the site on a planned operating day 	Unplanned	Throughout the implementation period	<ul style="list-style-type: none"> • To be responsive to events affecting local community (i.e., George Floyd verdict) • No closures due to vaccine stock-out.
	We aimed to provide evening hours to facilitate improved access to those who work.	<ul style="list-style-type: none"> • Unable to provide evening hours (site open 9am-4pm) 	Unplanned	Early	<ul style="list-style-type: none"> • Given outdoor, community location, evening hours were not felt to be safe.
	In-person scheduling co-located at the UeS neighborhood vaccination site in order to improve convenience.	<ul style="list-style-type: none"> • In-person scheduling moved to UeS neighborhood testing site. 	Unplanned	Early	<ul style="list-style-type: none"> • To reduce congestion. • To improve efficiency (many direct referrals from testing site).
	Provide timely vaccination to all eligible community members who desired to be vaccinated at neighborhood site.	<ul style="list-style-type: none"> • Provided vaccination referrals to local safety net hospital. • We worked closely with local hospital staff to utilize open same- and next-day appointments. • Referred clients provided transport if needed • Referred clients either escorted by or met at hospital by UeS site to provide support. 	Unplanned	Early-middle	<ul style="list-style-type: none"> • At times demand outpaced timely appointments available. • To get motivated community members vaccinated as soon as possible.
	Only on-site, in-person registration offered in order to prioritize access for those without computer access/skills.	<ul style="list-style-type: none"> • On-line registration offered 	Unplanned	Late	<ul style="list-style-type: none"> • To address changing vaccine eligibility. • To maintain demand for vaccination.

Table 5. Behavior change outcomes associated with the effectiveness of the “Motivate, Vaccinate and Activate” strategy.

	Overall (n=997)	Latinx (n=669)	Not Latinx (n=328)	P-value
Had the neighborhood vaccination site not existed, when would you have been vaccinated?				
Later	565 (58.4%)	366 (56.1%)	199 (63.2%)	0.013
About the same time	335 (34.6%)	231 (35.4%)	104 (33.0%)	
Earlier	67 (6.9%)	55 (8.4%)	12 (3.8%)	
After your experience at the UeS site, were you more likely to recommend vaccination to family members, friends or co-workers?[^]				
Yes	450 (89.1%)	272 (90.1%)	178 (87.7%)	0.49
No	55 (10.9%)	30 (9.9%)	25 (12.3%)	
Since getting vaccinated at the UeS site, how many people have you reached out to get vaccinated?[^]				
0	40 (9.0%)	20 (7.4%)	20 (11.4%)	0.21
1-2	131 (29.4%)	74 (27.3%)	57 (32.6%)	
3-5	151 (33.9%)	99 (36.5%)	52 (29.7%)	
6-10	51 (11.4%)	35 (12.9%)	16 (9.1%)	
>10	73 (16.4%)	43 (15.9%)	30 (17.1%)	
How many previously unvaccinated people are you aware of that got vaccinated after you recommended it to them?[^]				
0	66 (17.0%)	30 (12.5%)	36 (24.3%)	0.035
1-2	156 (40.2%)	98 (40.8%)	58 (39.2%)	
3-5	93 (24.0%)	65 (27.1%)	28 (18.9%)	
6-10	34 (8.8%)	22 (9.2%)	12 (8.1%)	
>10	39 (10.1%)	25 (10.4%)	14 (9.5%)	

Note: All data is drawn from a survey among vaccinated clients aged ≥ 16 years old conducted after their first or second vaccine dose between May 2 and 19th, 2021 (n=997). [^] Responses limited to among participants completing the survey after their second vaccine dose (n=729).

Supplementary Table 1. Characteristics of individuals who were registered for vaccination at the Unidos en Salud vaccination site between February 1 and May 19, 2021, according to whether they did or did not receive at least one vaccine dose at the Unidos en Salud vaccination site.

	Registered for vaccination at UeS site (n=12,103)	Received at least one vaccine dose at UeS site (n=11,098)	Did not receive at least one vaccine dose at UeS site (n=1,005)
Median age, IQR	43 (32-56)	43 (32-56)	42 (30-54)
Age Category			
16-30	2796 (100%)	2530 (90.5%)	266 (9.5%)
31-50	5064 (100%)	4658 (92.0%)	406 (8.0%)
50-64	2850 (100%)	2617 (91.8%)	233 (8.2%)
65 and older	1393 (100%)	1293 (92.8%)	100 (7.2%)
Sex			
Male	5423 (100%)	4926 (90.8%)	497 (9.2%)
Female	6469 (100%)	5978 (92.4%)	491 (7.6%)
Non-binary/other	211 (100%)	194 (91.9%)	17 (8.1%)
Ethnicity			
Latinx	8458 (100%)	7809 (92.3%)	649 (7.7%)
White	1716 (100%)	1581 (92.1%)	135 (7.9%)
Asian	959 (100%)	852 (88.8%)	107 (11.3%)
Black	313 (100%)	269 (85.9%)	44 (14.1%)
Other	657 (100%)	587 (89.3%)	70 (10.7%)

Note: proportions represent row percentages.

Supplementary Table 2. Geographic residence of clients receiving at least one vaccine dose at the Unidos en Salud neighborhood vaccination site between February 1 and May 19, 2021 according to zip code.

	Overall (n=11,098)	Latinx (n=7,809)	Not Latinx (n=3,289)
Zip code			
94110	3590 (100%)	2484 (69.2%)	1106 (30.8%)
94112	1453 (100%)	1242 (85.5%)	211 (14.5%)
94124	452 (100%)	366 (81.0%)	86 (19.0%)
94102	344 (100%)	274 (79.7%)	70 (20.3%)
94134	492 (100%)	407 (82.7%)	85 (17.3%)
94103	499 (100%)	356 (71.3%)	143 (28.7%)
Other San Francisco/Bay Area	4268 (100%)	2680 (62.8%)	1588 (37.2%)

Note: proportions represent row percentages

Supplementary Table 3. Characteristics of individuals who were offered participation in the on-site post-vaccination survey, according to whether they did or did not agree to complete the survey. All surveys were completed between May 2 and May 19th, 2021.

	Offered survey (n=3,597)	Completed survey (n=997)	Declined survey (n=2,540)
Median age, IQR	37 (27-48)	35 (26-46)	38 (28-49)
Age Category			
16-30	1154 (32.6%)	384 (38.5%)	770 (30.3%)
31-50	1676 (47.4%)	430 (43.1%)	1246 (49.1%)
50-64	580 (16.4%)	163 (16.3%)	417 (16.4%)
65 and older	127 (3.6%)	20 (2.0%)	107 (4.2%)
Sex			
Male	2130 (60.2%)	575 (57.7%)	1555 (61.2%)
Female	1359 (38.4%)	409 (41.0%)	950 (37.4%)
Non-binary/other	48 (1.36%)	13 (1.3%)	35 (1.38%)
Ethnicity			
Latinx	2632 (74.4%)	669 (67.1%)	1963 (77.3%)
White	427 (12.1%)	163 (16.3%)	264 (10.4%)
Asian	242 (6.8%)	83 (8.3%)	159 (6.3%)
Black	80 (2.3%)	25 (2.5%)	55 (2.2%)
Other	156 (4.4%)	57 (5.7%)	99 (3.9%)

Supplementary Table 4. Acceptability measures associated with the Unidos en Salud vaccination site.

	Overall (n=997)	Latinx (n=669)	Not Latinx (n=328)	P-value
Clients stating they would recommend the UeS vaccination site to others				
Yes	954 (98.6%)	643 (98.2%)	311 (99.4%)	0.25
No	14 (1.5%)	12 (1.8%)	2 (0.6%)	
Who would you recommend this site to?				
Family members	782 (82.1%)	524 (81.6%)	258 (83.0%)	0.970
Friends	805 (84.5%)	511 (79.6%)	294 (94.5%)	<0.001
Co-workers	639 (67.1%)	400 (62.3%)	239 (76.8%)	<0.001
Features of the UeS vaccination that clients liked the most (top choice)				
Fast and efficient	284 (32.8%)	161 (27.5%)	123 (44.1%)	<0.001
Friendly and professional staff	349 (40.3%)	268 (45.7%)	81 (29.0%)	
Bilingual staff	62 (7.2%)	58 (9.9%)	4 (1.4%)	
Staff were available and able to answer questions	14 (1.6%)	11 (1.9%)	3 (1.1%)	
Getting vaccinated in their community	77 (8.9%)	42 (7.2%)	35 (12.5%)	
Getting vaccinated outside of a formal healthcare setting	13 (1.5%)	6 (1.0%)	7 (2.5%)	
Ease of booking 2 nd appointment	32 (3.7%)	16 (2.7%)	16 (5.7%)	
No requirement to show documentation	30 (3.5%)	20 (3.4%)	10 (3.6%)	
Other	4 (0.5%)	4 (0.7%)	0	
Features of the UeS vaccination that clients liked the most (choose all)				
Fast and efficient	694 (69.6%)	421 (62.9%)	273 (83.2%)	<0.001
Friendly and professional staff	854 (85.7%)	558 (83.4%)	296 (90.2%)	0.005
Bilingual staff	497 (49.8%)	368 (55.0%)	129 (39.3%)	<0.001
Staff were available and able to answer questions	373 (37.4%)	226 (33.8%)	147 (44.8%)	<0.001
Getting vaccinated in their community	428 (42.9%)	252 (37.7%)	176 (53.7%)	<0.001
Getting vaccinated outside of a formal healthcare setting	259 (26%)	141 (21.1%)	118 (36.0%)	<0.001
Ease of booking 2 nd appointment	492 (49.3%)	273 (40.8%)	219 (66.8%)	<0.001
No requirement to show documentation of residency or vaccine eligibility	276 (27.7%)	176 (26.3%)	100 (30.5%)	0.19
Other	6 (0.6%)	3 (0.4%)	3 (0.9%)	0.40

Note: All data is drawn from a survey among vaccinated clients aged ≥16 years old conducted after their first or second vaccine dose between May 2 and 19th, 2021 (n=997).

Supplementary Table 5. Characteristics of clients receiving at least one vaccine dose at the Unidos en Salud vaccination site between February 1 and April 21, 2021 according to whether they completed both vaccine doses.

	Total clients receiving at least one dose (n=9,305)	Completed both doses (n=9,152)	Did not complete both doses (n=153)
Age Category			
16-30	1900 (100%)	1865 (98.2%)	35 (1.8%)
31-50	3822 (100%)	3752 (98.2%)	70 (1.8%)
50-64	2353 (100%)	2321 (98.6%)	32 (1.4%)
65 and older	1230 (100%)	1214 (98.8%)	16 (1.2%)
Sex			
Male	4272 (100%)	4221 (98.8%)	51 (1.2%)
Female	4851 (100%)	4755 (97.8%)	96 (2.2%)
Non-binary/other	182 (100%)	176 (96.7%)	6 (3.3%)
Ethnicity			
Latinx	6313 (100%)	6207 (98.3%)	106 (1.7%)
White	1476 (100%)	1453 (98.4%)	23 (1.6%)
Asian	760 (100%)	751 (98.8%)	9 (1.2%)
Black	230 (100%)	227 (98.7%)	3 (1.3%)
Other	526 (100%)	514 (97.7%)	12 (2.3%)

Note: Analysis is censored after April 21, 2021 in order to allow all clients equal opportunity to accrue 4 weeks of follow-up time after their first vaccine dose at the neighborhood vaccination site. There were 1,780 people excluded who received their 1st dose after April 21, 2021 and 13 excluded who received only their second dose at the neighborhood site.

Figure Legends

Figure 1. Overview of the “Motivate, Vaccinate and Activate” Strategy to increase vaccine uptake among Latinx community members living in San Francisco.

Figure 2. Photographs taken during the implementation period of the “Motivate, Vaccinate and Activate”. Panel A shows an example of flyers promoting COVID-19 vaccination at the Unidos en Salud neighborhood site, posted in English and Spanish. Panel B shows the registration area of the Unidos en Salud low-barrier vaccination site. Panel C shows the Unidos en Salud COVID-19 testing site directly across from the vaccination site. Community members could make vaccination appointments and were also encouraged to drop-in for same-day vaccination. Community members could ask site staff questions about the COVID-19 vaccine and were provided handouts about the COVID-19 vaccine. Panel D shows the waiting area of the Unidos en Salud low-barrier vaccination site where clients were provided education on possible COVID-19 side effects and were also ‘activated’ to the community health team to become vaccine ambassadors to reach out to their unvaccinated family members, friends and co-workers.

Figure 3. The ethnic composition of clients vaccinated at the Unidos en Salud neighborhood site (n=11,098) compared to the ethnic composition of the Mission District (n=62,452) among persons at least 16 years of age.

Figure 4. Map of San Francisco and the greater South Bay Area demonstrating the number of clients vaccinated at the Unidos en Salud neighborhood vaccination site according to their zip code of residence. The large majority of vaccinated clients living outside of San Francisco work in the Mission District.

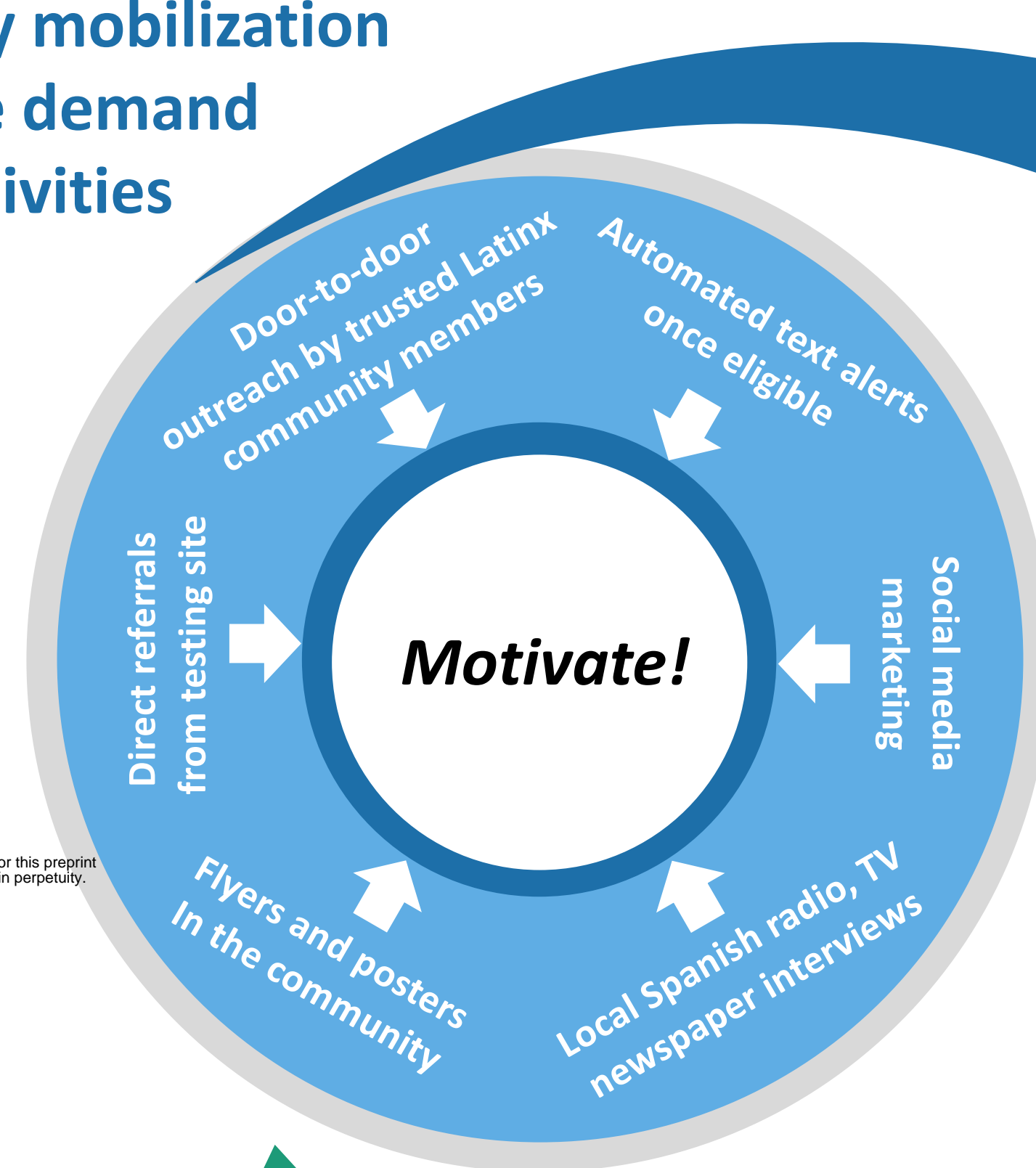
Figure 5. Features of the Unidos en Salud neighborhood vaccination site that clients said that they liked or appreciated stratified according to ethnicity. Panel A shows the features that clients liked the most (can choose only one) while Panel B shows all of the features that clients stated that they liked.

Figure 6. Temporal trends in vaccinations at the Unidos en Salud neighborhood vaccination site during the 16-week implementation period from February 1 to May 19, 2021. Panel A shows the number of vaccinations that were administered each week according to eligibility criteria indication. Panel B shows the proportion of all vaccinations each week that were administered to Latinx persons; this provides measure of how effectively Latinx individuals were reached throughout the entirety of the implementation period.

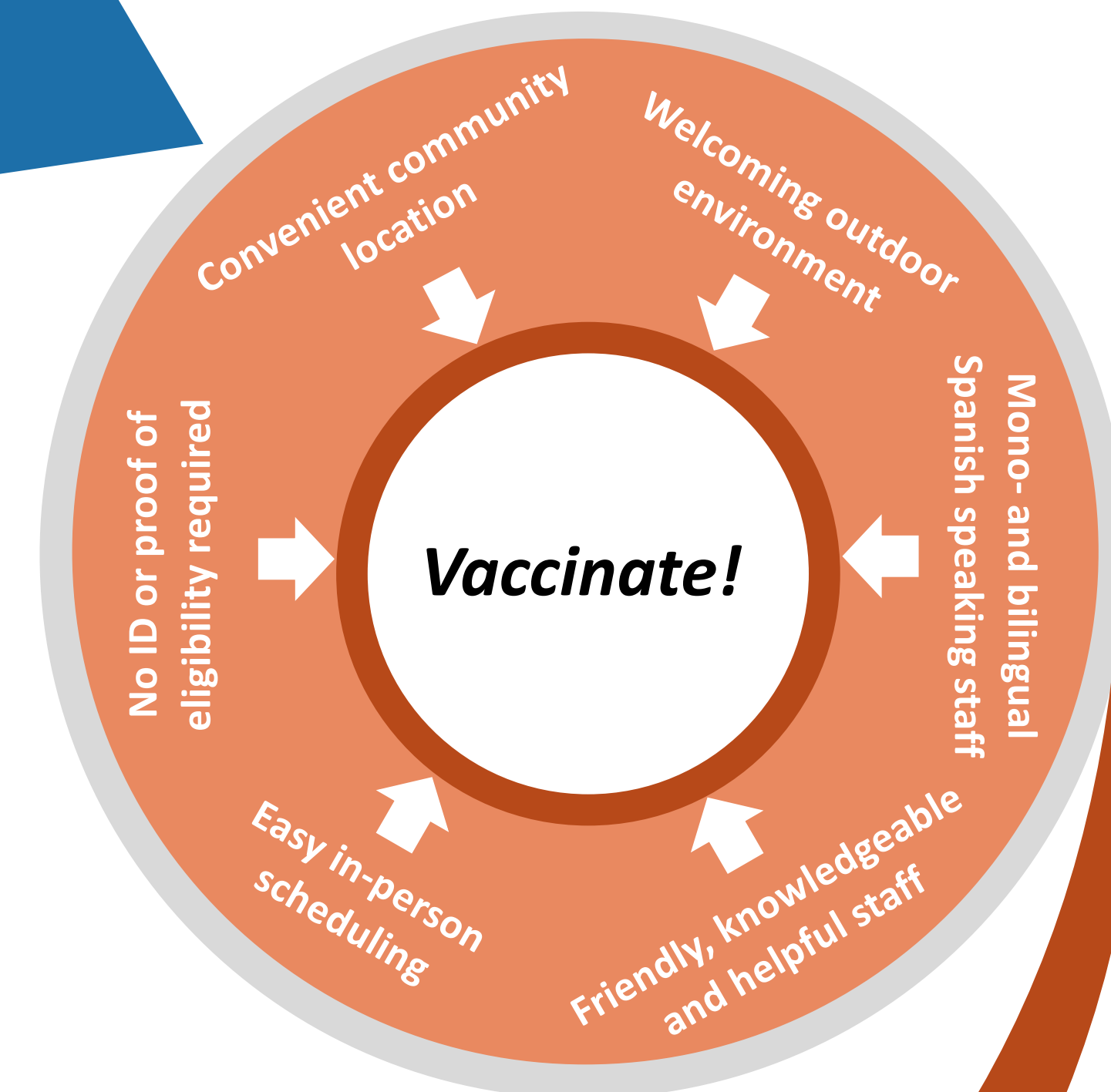
Supplementary Figure 1. Map of San Francisco according to cumulative COVID-19 cases (rate per 10,000 residents) according to neighborhood. Darker blue shading indicates a higher cumulative prevalence of COVID-19 in a given neighborhood. The pink dot indicates the location of the Unidos en Salud neighborhood vaccination site.

Figure 1.

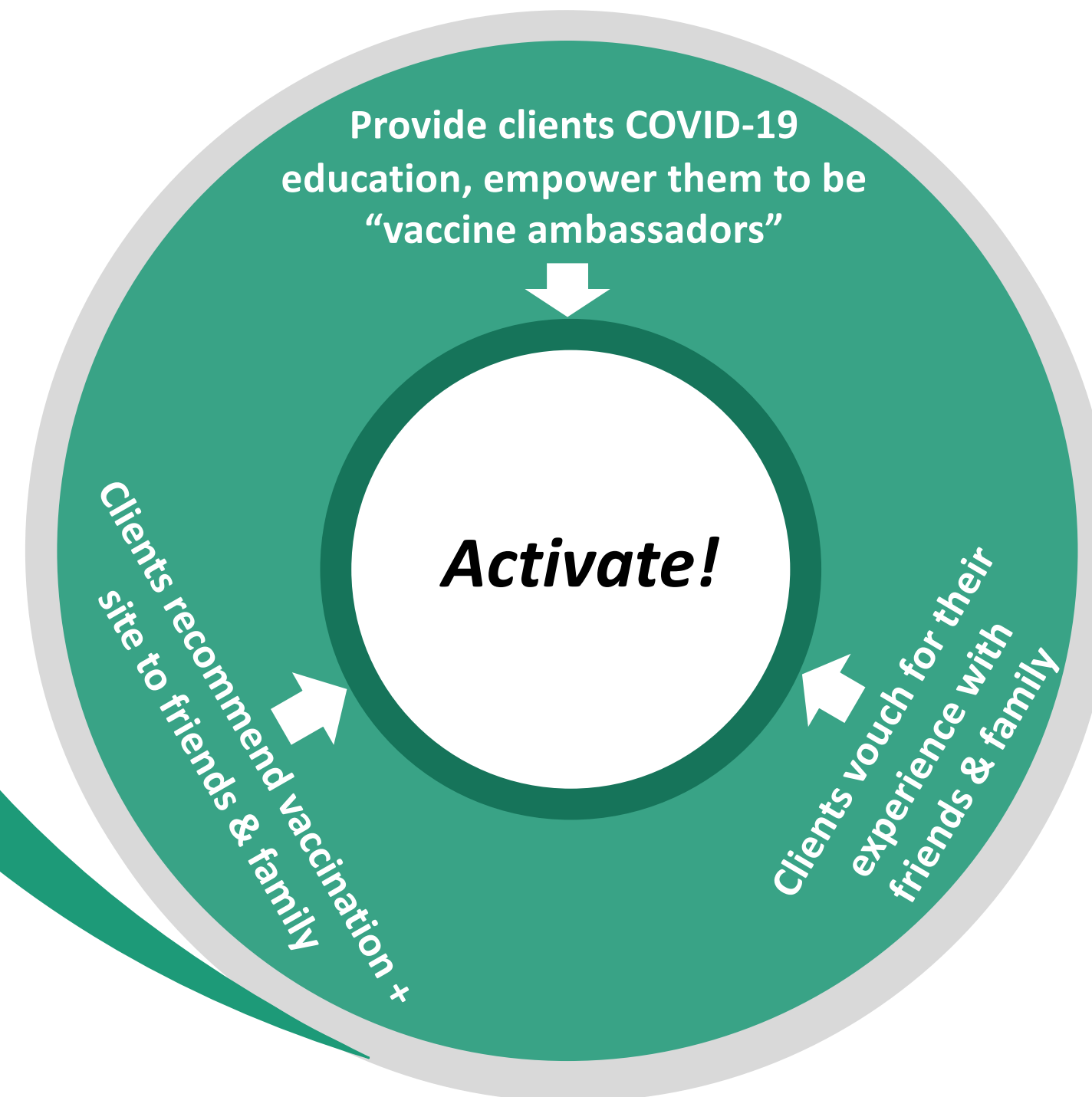
1. Pre-vaccination:
Undertake community mobilization
COVID-19 vaccine demand
generation activities



2. Vaccination:
Implement and maintain a
low-barrier, client-centered
community-based
COVID-19 vaccination site



3. Post-vaccination:
Leverage social networks to
increase trust and uptake of
COVID-19 vaccine



medRxiv preprint doi: <https://doi.org/10.1101/2021.06.07.21258230>; this version posted June 9, 2021. The copyright holder for this preprint (which was not certified by peer review) is the author/funder, who has granted medRxiv a license to display the preprint in perpetuity. It is made available under a [CC-BY-NC-ND 4.0 International license](https://creativecommons.org/licenses/by-nc-nd/4.0/).

Figure 2.

A.

LET'S CREATE COMMUNITY IMMUNITY



medRxiv preprint doi: <https://doi.org/10.1101/2021.06.07.21258230>; this version posted June 9, 2021. The copyright holder for this preprint (which was not certified by peer review) is the author/funder, who has granted medRxiv a license to display the preprint in perpetuity. It is made available under a CC-BY-NC-ND 4.0 International license.

FOLLOW SAFETY PROCEDURES-TEST- VACCINATE-TEST

Testing and Vaccine Sunday - Wednesday
9am-2pm

VACCINE:
Appointment
needed
24th and Capp
street

Eligible NOW:
65+ of age
Health workers
IHSS workers
Eligible starting 2/24:
Food and Agriculture
workers
Educators
Childcare providers

TESTING:
No appointment
needed
24th and
Mission

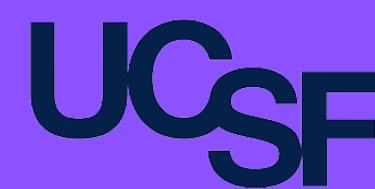


Figure 3.

Ethnic make-up of the Mission District, San Francisco (n=62,452)

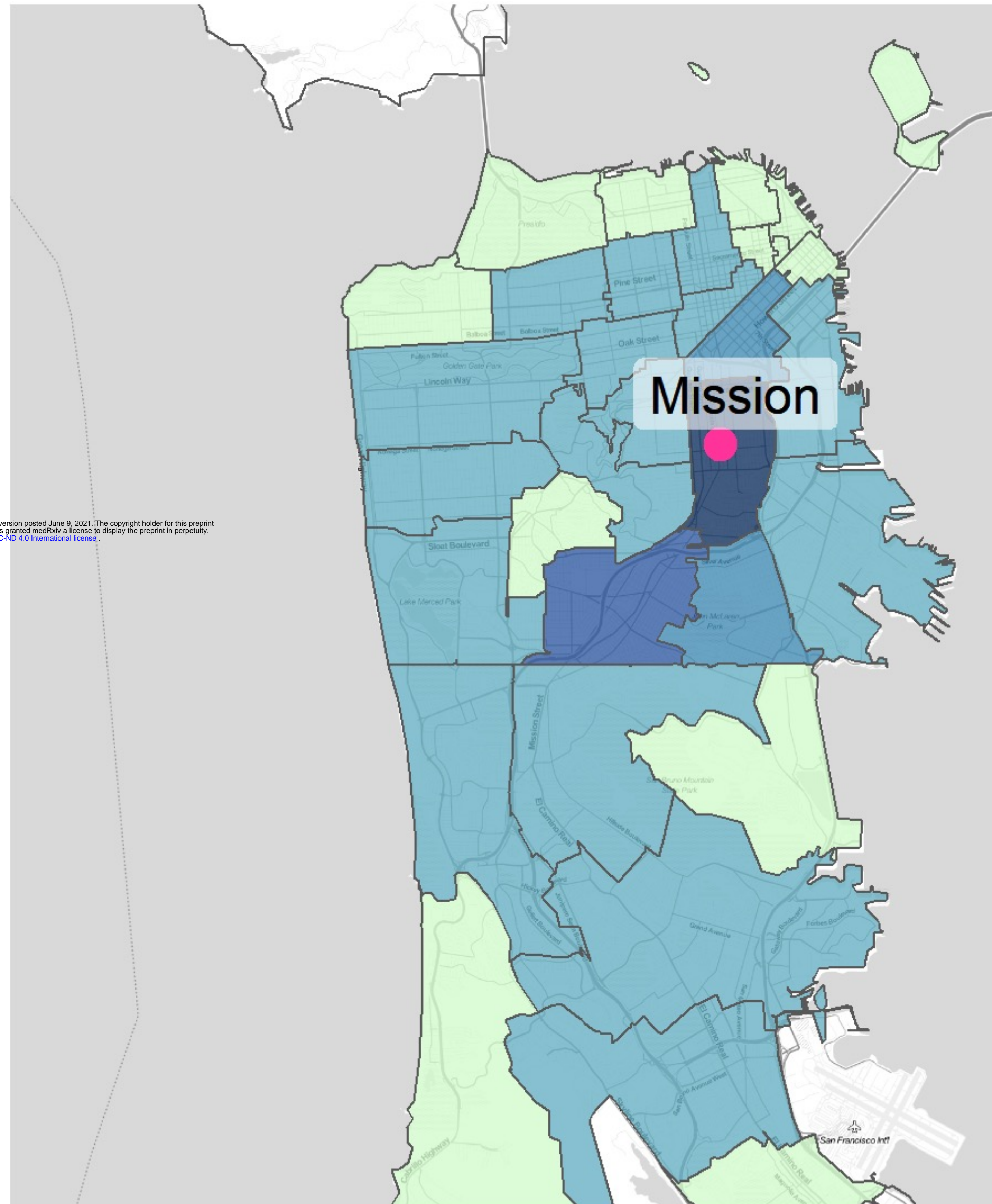


medRxiv preprint doi: <https://doi.org/10.1101/2021.06.07.21258230>; this version posted June 9, 2021. The copyright holder for this preprint (which was not certified by peer review) is the author/funder, who has granted medRxiv a license to display the preprint in perpetuity. It is made available under a CC-BY 4.0 International license.

Ethnic make-up of clients vaccinated at neighborhood site (n=11,098)



Figure 4.



medRxiv preprint doi: <https://doi.org/10.1101/2021.06.07.21258230>; this version posted June 9, 2021. The copyright holder for this preprint (which was not certified by peer review) is the author/funder, who has granted medRxiv a license to display the preprint in perpetuity. It is made available under a [CC-BY-NC-ND 4.0 International license](https://creativecommons.org/licenses/by-nc-nd/4.0/).

Number vaccinated

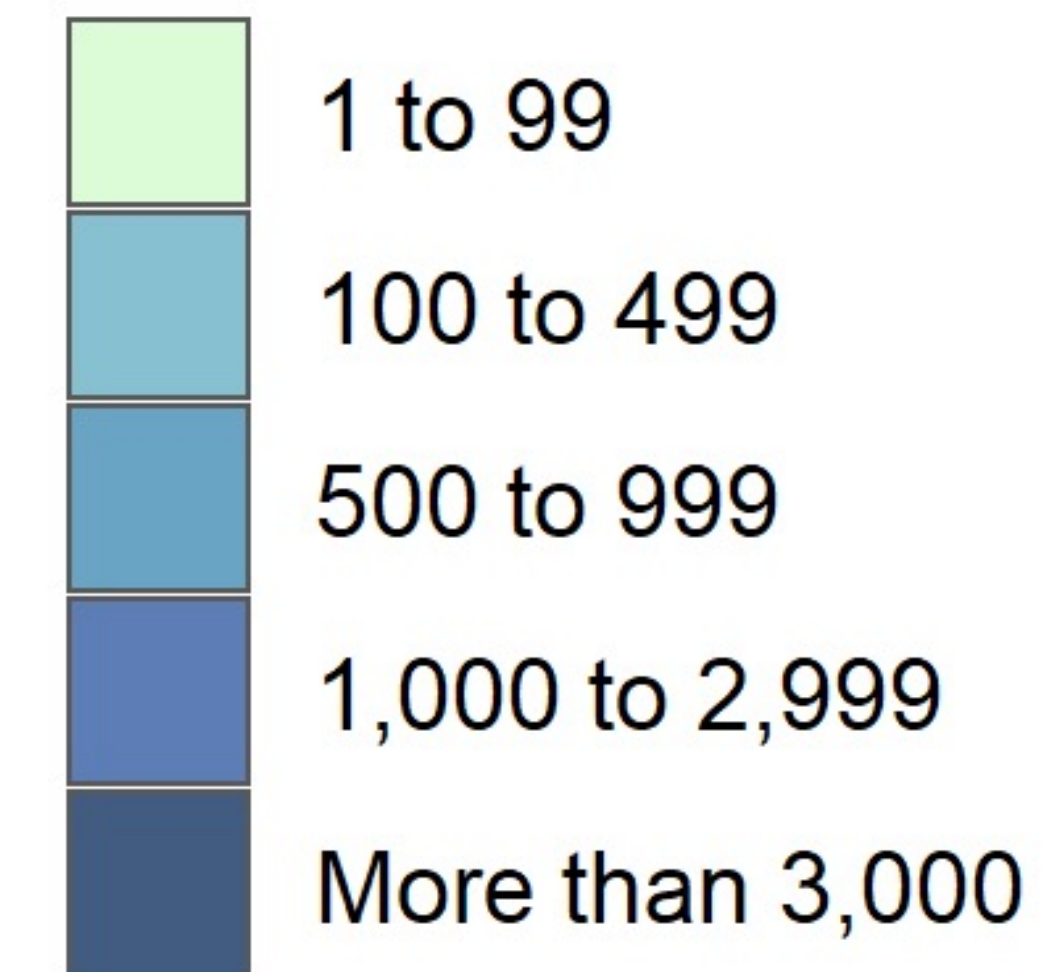
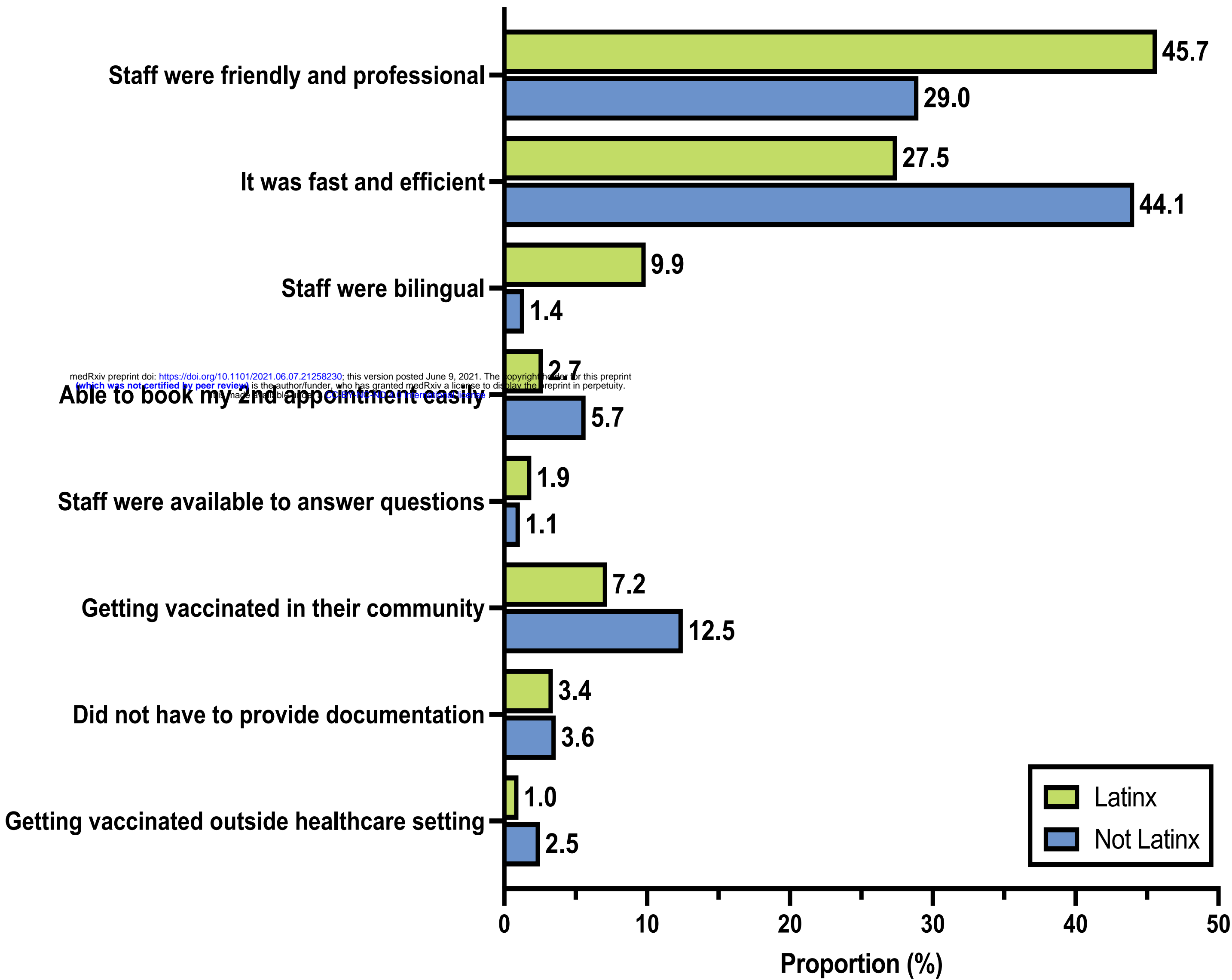


Figure 5.

A.



B.

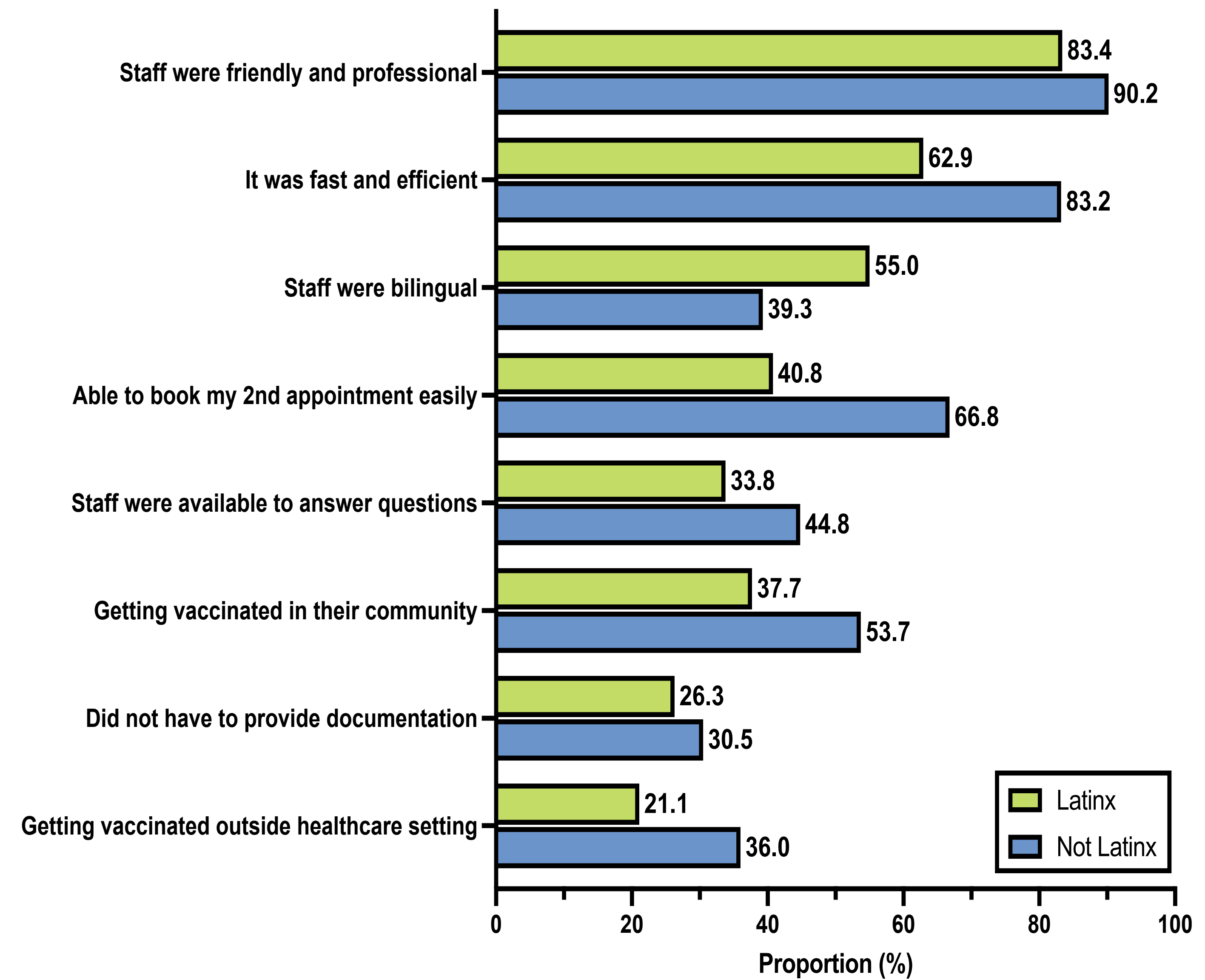
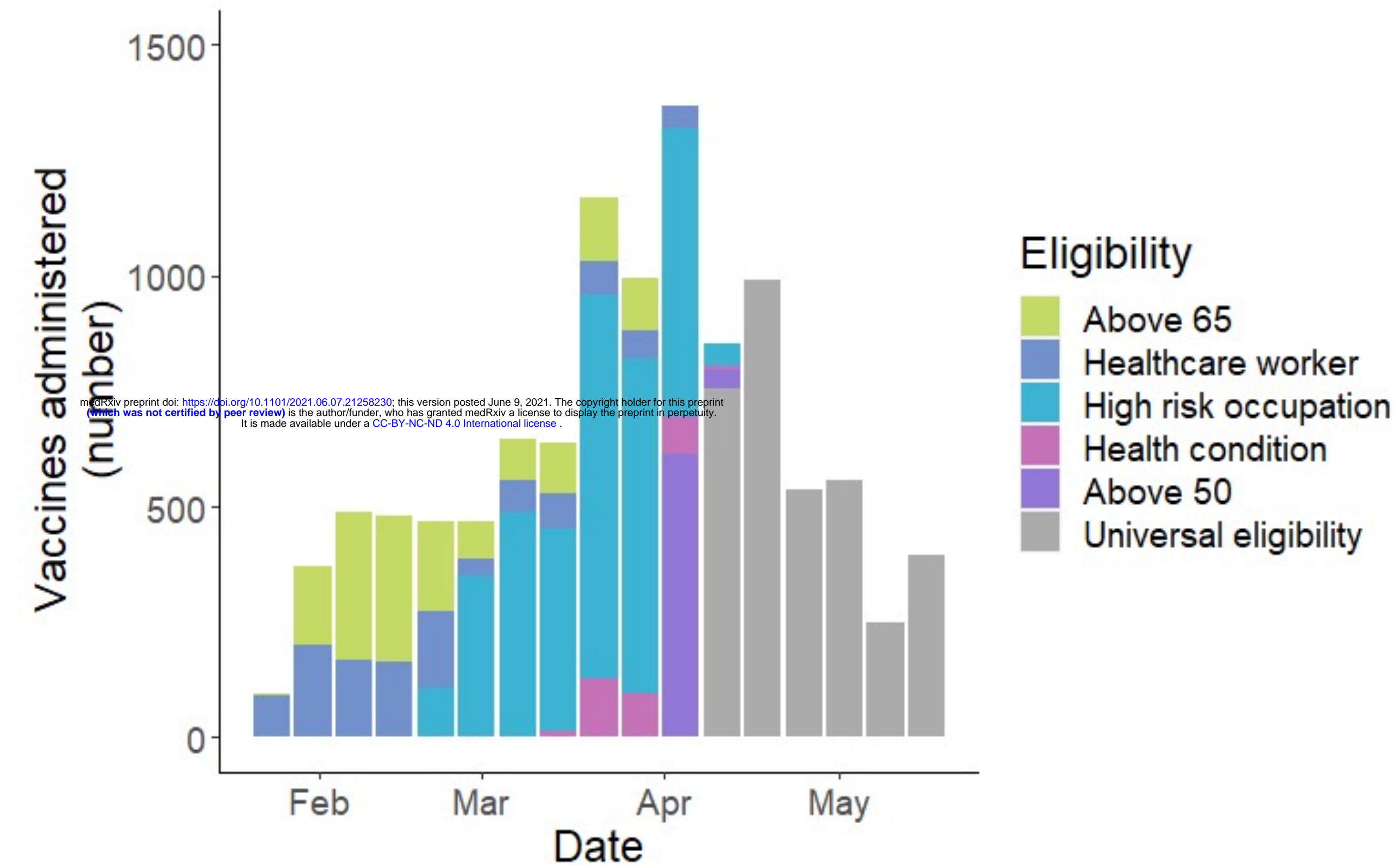
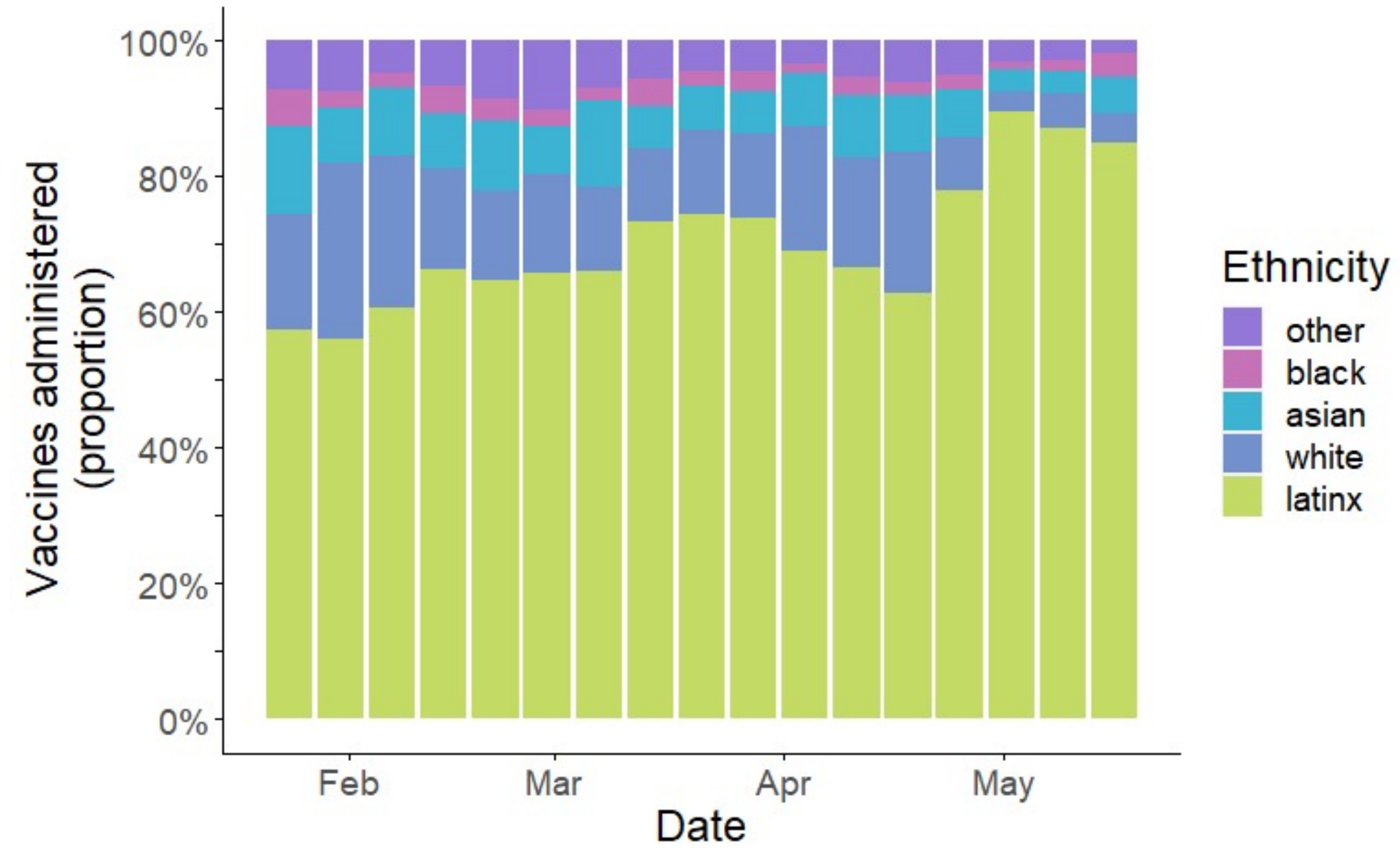


Figure 6.

A.

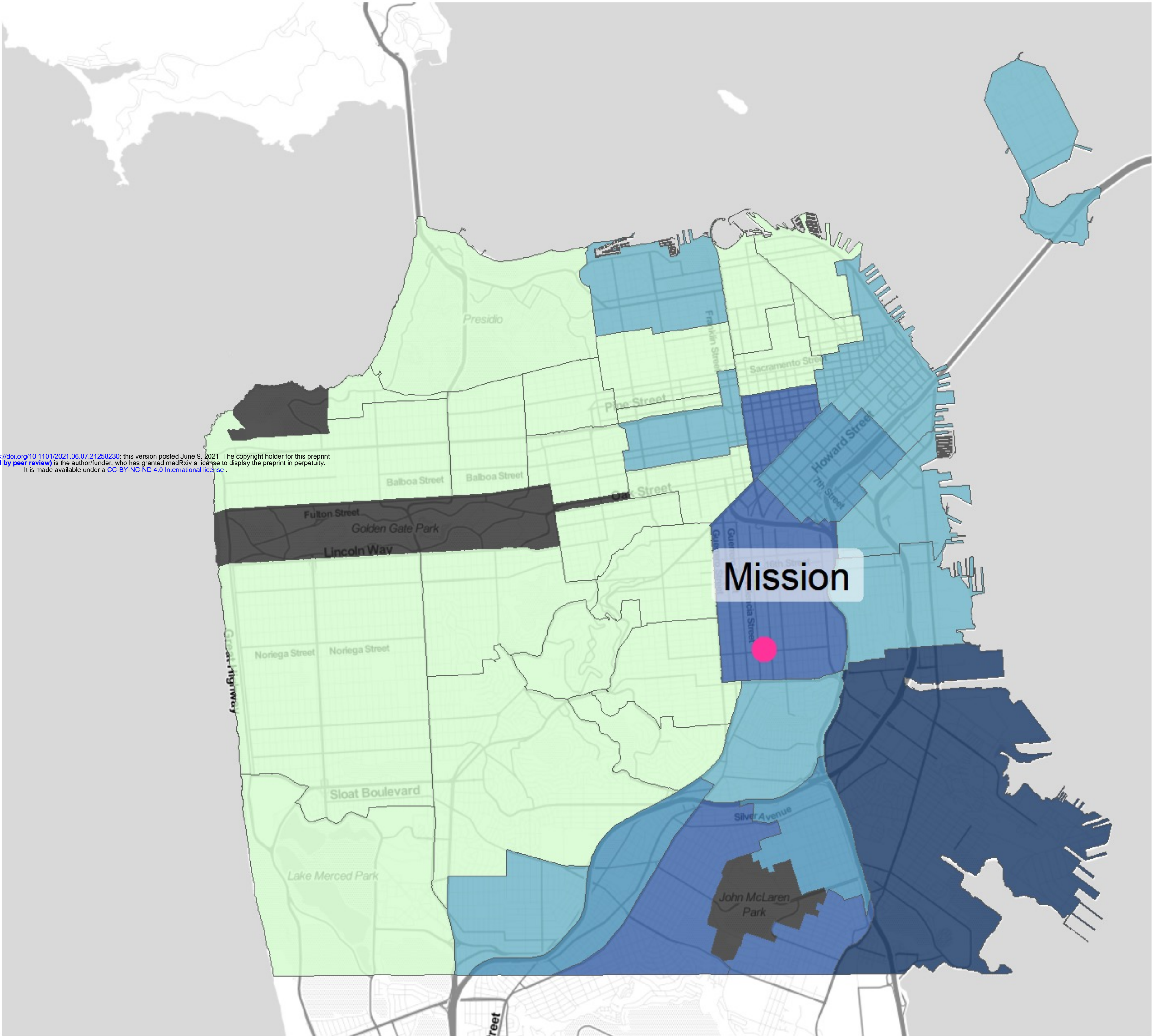


B.



Supplementary Figure 1.

medRxiv preprint doi: <https://doi.org/10.1101/2021.06.07.21258230>; this version posted June 9, 2021. The copyright holder for this preprint (which was not certified by peer review) is the author/funder, who has granted medRxiv a license to display the preprint in perpetuity. It is made available under a CC-BY-NC-ND 4.0 International license.



Cumulative cases per 10,000 residents

