

1 Effectiveness of a chatbot in improving the mental wellbeing of  
2 health workers in Malawi during the COVID-19 pandemic: A  
3 randomized, controlled trial

4 Short title: Chatbot use and mental wellbeing of health workers

5  
6 Eckhard F. Kleinau<sup>1\*</sup>¶, Tilinao Lamba<sup>2¶</sup>, Wanda Jaskiewicz<sup>3</sup>, Katy Gorentz<sup>3</sup>, Ines Hungerbuehler<sup>4</sup>, Donya  
7 Rahimi<sup>3</sup>, Demoubly Kokota<sup>2</sup>, Limbika Maliwichi<sup>2</sup>, Edister S. Jamu<sup>2</sup>, Alex Zumazuma<sup>5</sup>, Mariana Negrão<sup>4</sup>,  
8 Raphael Mota<sup>4</sup>, Yasmine Khouri<sup>4</sup>, Michael Kapps<sup>4</sup>

9  
10 <sup>1</sup> University Research Co. (URC), Chevy Chase, Maryland, United States of America

11 <sup>2</sup> Dept. of Psychology, University of Malawi – Chancellor College, Zomba, Malawi

12 <sup>3</sup> Global Health Division, Chemonics International, Washington, District of Columbia, United States of  
13 America

14 <sup>4</sup> Clinical Division, Vitalk, São Paulo, Brazil

15 <sup>5</sup> Department of Mental Health, Kamuzu University of Health Sciences (KUHES), Blantyre, Malawi

16  
17 \* Corresponding author

18 E-mail: [ekleinau@urc-chs.com](mailto:ekleinau@urc-chs.com) (EK)

19 ¶These authors contributed equally to this work.

20 This study was registered with the ISRCTN clinical trial registry; trial registration number:  
21 ISRCTN16378480.

22

23

## 24 Abstract

25 We conducted a randomized, controlled trial (RCT) to investigate our hypothesis that the  
26 interactive chatbot, Vitalk, is more effective in improving mental wellbeing and resilience outcomes of  
27 health workers in Malawi than the passive use of Internet resources.

28 For our 2-arm, 8-week, parallel RCT (ISRCTN Registry: trial ID ISRCTN16378480), we recruited  
29 participants from 8 professional cadres from public and private healthcare facilities. The treatment arm  
30 used Vitalk; the control arm received links to Internet resources. The research team was blinded to the  
31 assignment. Of 1,584 participants randomly assigned to the treatment and control arms, 215  
32 participants in the treatment and 296 in the control group completed baseline and endline anxiety  
33 assessments. Six assessments provided outcome measures for: anxiety (GAD-7); depression (PHQ-9);  
34 burnout (OLBI); loneliness (ULCA); resilience (RS-14); and resilience-building activities. We analyzed  
35 effectiveness using mixed-effects linear models, effect size estimates, and reliable change in risk levels.

36 Results support our hypothesis. Difference-in-differences estimators showed that Vitalk  
37 reduced: depression (-0.68 [95% CI -1.15 to -0.21]); anxiety (-0.44 [95% CI -0.88 to 0.01]); and burnout (-  
38 0.58 [95% CI -1.32 to 0.15]). Changes in resilience (1.47 [95% CI 0.05 to 2.88]) and resilience-building  
39 activities (1.22 [95% CI 0.56 to 1.87]) were significantly greater in the treatment group. Our RCT  
40 produced a medium effect size for the treatment and a small effect size for the control group.

41 This is the first RCT of a mental health app for healthcare workers during the COVID-19  
42 pandemic in Southern Africa combining multiple mental wellbeing outcomes and measuring resilience  
43 and resilience-building activities. A substantial number of participants could have benefited from mental  
44 health support (1 in 8 reported anxiety and depression; 3 in 4 suffered burnout; and 1 in 4 had low  
45 resilience). Such help is not readily available in Malawi. Vitalk has the potential to fill this gap.

46

## 47 Introduction

48 Healthcare provision can be stressful even under normal circumstances, and maintaining the  
49 mental wellbeing of health workers is of utmost importance for optimal and safe patient care [1]. The  
50 COVID-19 pandemic has overwhelmed countries' health systems and increased care-related pressure to  
51 ensure patient and staff safety. Health workers confront life and death decisions, physical exhaustion,  
52 lack of protective equipment, and fear of infection as daily threats to their mental wellbeing. An  
53 increasing number of studies report a high proportion of health professionals globally suffering from  
54 depression, anxiety, and burnout. A systematic review of 59 studies found that a median of 24% of  
55 health workers suffered from anxiety, 21% from depression, and 37% from distress [2]. A meta-analysis  
56 from 36 countries reported slightly higher levels (8.0% for depression; 26.9% for anxiety; 24.1% for post-  
57 traumatic stress symptoms; 36.5% for stress; and 50.0% for distress) [3]. Recent studies from sub-  
58 Saharan Africa showed similar levels. A multi-center cross-sectional study from Ghana, found the  
59 following levels: depression (21.1%), anxiety (27.8%) and stress (8.2%) [4]. Research from Ethiopia found  
60 the following prevalence: depression (20.2%), anxiety (21.9%), and psychological distress (15.5%) [5].  
61 Data from South Africa suggest high levels of mental disorders (around 50%) among all types of health  
62 workers due to work-related stress [6]. A study from Malawi using a small sample of nurses and the  
63 Coronavirus Anxiety Scale suggests that 26% (n=26) of respondents had COVID-19-related anxiety and  
64 48% (n=49) functional impairment [7].

65 Mental disorders not only pose threats to patient safety and health workers' quality of life, but  
66 they also incur high economic costs. A World Health Organization (WHO)-led study, well before the  
67 COVID-19 pandemic, found that depression and anxiety disorders cost the global economy US\$1 trillion  
68 each year [8]. This study estimated a return on investments of between 2.3 and 5.7 to 1 if treatment of  
69 these mental disorders was scaled up. Mental health interventions include basic psychosocial  
70 counselling for milder cases, and more intensive psychosocial treatment plus antidepressant drugs for  
71 more severe cases. Over the last decade, computer- or Internet-based cognitive behavioural therapy (c-  
72 CBT or i-CBT) has been tested and implemented as alternatives to in-person treatment. Research has  
73 shown that c-CBT-based self-administered interventions improve depression and anxiety in adults. A  
74 meta-analysis of 49 randomized controlled trials (RCT) revealed a significant medium to large effect size  
75 (Hedges'  $g=0.77$ , 95% CI 0.59 to 0.95) of c-CBT for depression and anxiety [9].

76 Another meta-analysis of 22 RCTs found an even greater effect size ( $g=0.88$ , 95% CI 0.76 to 0.99)  
77 [10]. However, a recent systematic review found small to medium post-treatment pooled effect sizes  
78 regarding depressive symptoms ( $g=0.51$ , 95% CI 0.30 to 0.72) and anxiety symptoms ( $g=0.44$ , 95% CI  
79 0.23 to 0.65) of c-CBT for reducing these symptoms in adolescents and young adults compared to passive  
80 controls [11]. Clinical trials have established that mobile applications can effectively deliver CBT  
81 programs for the treatment of: depression [12]; self-management of chronic pain conditions [13]; and  
82 social anxiety disorder [14]. C-CBT or i-CBT can lower barriers to seek help, which is especially important  
83 in settings such as those in sub-Saharan Africa with low levels of access to psychologists and therapists  
84 [15].

85 C-CBT and i-CBT have evolved into interactive, automated conversational agents (chatbots) that  
86 are driven by artificial intelligence, including the recent entrant Vitalk (with versions available for the  
87 public and adapted for health professionals). A panel study without control group in Brazil established

88 the effectiveness of the public version, finding a large post-intervention effect size of Cohen's  $d$  of -0.81  
89 or greater for anxiety, depression, and stress [16]. The version for health workers has been pilot tested  
90 in Malawi, a country in which access to mental health therapy is very limited, with only 0.02  
91 psychologists, 0.01 psychiatrists and 0.04 occupational therapists per 100,000 population [17]. Only  
92 recently has the country successfully trained 3 psychiatrists. The frequent deployment of mental health  
93 professionals, especially psychiatric nurses, to other duties such as maternity services exacerbates this  
94 situation [18].

95 To date, there have been few studies, and even fewer RCTs, with the aim of establishing the  
96 effectiveness of chatbots. Most of these trials were based on small samples of 70 participants or fewer,  
97 had a short duration of 2-4 weeks, suffered from serious biases, and fell short of establishing that  
98 chatbots lead to improved mental health outcomes. All trials were conducted in high-income countries,  
99 and none in low-resource settings [19]. No RCTs have been conducted to assess the effectiveness of  
100 chatbots in improving the mental health status of health workers specifically [15].

101 To fill these gaps in evidence, we conducted an RCT in Malawi (building on the earlier pilot test),  
102 to investigate our working hypothesis that a virtual mental healthcare assistant chatbot, Vitalk, is an  
103 acceptable source of psychosocial and mental wellbeing support for health workers to effectively  
104 decrease work-related anxiety, depression, burnout, and loneliness (based on standard mental health  
105 scales), and to increase resilience and resilience-building behaviours.

## 106 **Methods**

### 107 **Study design**

108 This study, a 2-arm, parallel RCT, with a pre-treatment assessment, 8-week intervention period,  
109 mid-study assessments at 4-5 weeks, and an end-of-study assessment at 9 weeks, was conducted by 2  
110 study teams with distinct roles: a trial management team and a research team. The management team  
111 reviewed registration data, removed exclusions, assigned groups and unique trial IDs, and provided  
112 communications and technical support to participants. The research team developed the study protocol,  
113 recruited participants, held participant workshops at the beginning and end of the study, held focus  
114 group discussions (FGDs) during the final workshop, and analyzed the data (de-identified before the  
115 analyses).

116 Participants were randomly assigned in equal proportions to either the treatment or control  
117 group after registration. The trial management team did the random assignment using permuted block  
118 randomization sequences but concealed the allocation and identifying information from the research  
119 team for the duration of the study. Vitalk, the developer of the app, created a web portal for  
120 participants to register, give consent, and enter their demographic information online. Participants  
121 received an email with their unique trial ID and a link to either the treatment app, Vitalk, or to the  
122 website (control group). As a single-blinded design, only the research team was blinded to the study arm  
123 assignments; participants in both arms were told they were participating in a study on "online self-help  
124 for mental wellbeing" but they were aware of the specific intervention they were using and may have  
125 found out that others used a different intervention. Neither personally identifiable information nor the  
126 participants' facility affiliations were shared outside the trial management team.

## 127 Study population and recruitment

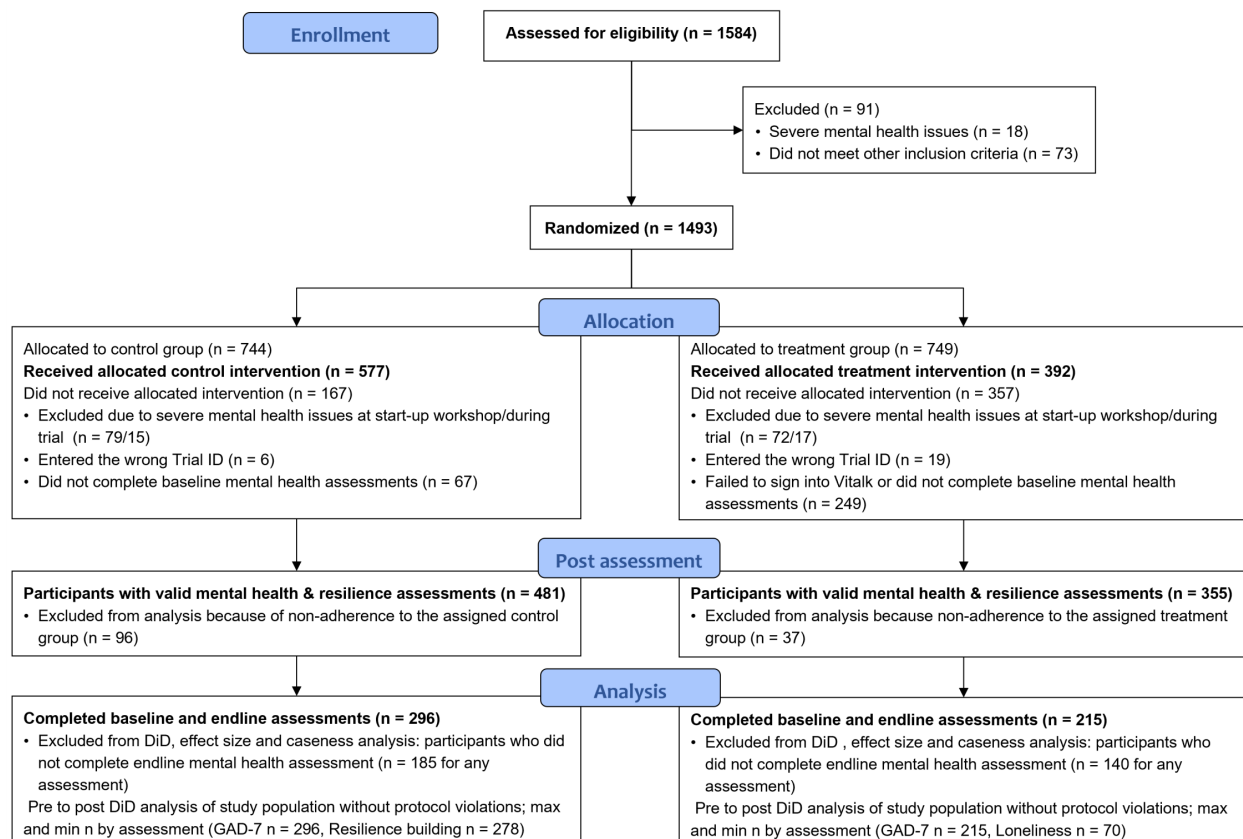
128 The 8 professional cadres ( Table 1) eligible for participation were recruited from all public and  
 129 private primary, secondary and tertiary care facilities within Blantyre and Lilongwe districts.

130 **Table 1.Type of health workers eligible.**

• Doctors	• Nurses
• Medical Assistants	• Clinical officers
• Laboratory technicians	• Physiotherapy technicians
• Pharmacists	• Physiotherapists

131  
 132 We recruited participants via posters placed in participating health facilities. All facilities were  
 133 contacted by phone and email; in larger facilities the research team made short presentations to  
 134 leadership to seek permission to recruit from their facilities and hang the posters.

135 The Consolidated Standards of Reporting Trials (CONSORT) diagram in Fig 1 shows that of 1,584  
 136 participants enrolled in the study, 836 completed one or more mental health and resilience assessments  
 137 (481 in the control and 355 in the treatment group). Based on participant feedback, the treatment group  
 138 saw a much greater attrition due to technical difficulties impacting the use of the Vitalk app.



139  
 140 **Fig 1. Study participant flow.**

## 141 **Informed consent, screening, and eligibility**

142 Interested health workers were invited to a half-day workshop to provide general information  
143 and answer questions about the study, and in which they could choose to join the study by signing an  
144 informed consent form (kept under lock by the University of Malawi). The research team introduced the  
145 trial as a “mobile-phone-based research study of online self-help for mental wellbeing” but provided no  
146 details about the 2 study groups.

147 To be eligible, participants needed to meet the following inclusion criteria:

- 148 ● Be currently employed as 1 of the 8 types of service providers listed above (a minimum  
149 educational qualification of a diploma adhering to the Ministry of Health employment criteria;  
150 medical assistants with a certificate and 2 years of college completed qualified)
- 151 ● Possess some degree of English language proficiency
- 152 ● Own a smartphone with an Android operating system
- 153 ● Have no history – past or current – of counseling or therapy for severe mental health disorders
- 154 ● Not have self-reported suicidal ideation (question 9 of the PHQ-9)
- 155 ● Score below “very high risk” levels for depression, or below “very high risk” of anxiety combined  
156 with “high” or “very high risk” of depression on the initial and subsequent assessments

157  
158 The management team emailed excluded participants Internet resources for self-help. For those  
159 excluded based on suicidal ideation or very high risk of depression and/or anxiety, the team also sent  
160 the contacts of 2 local psychologists.

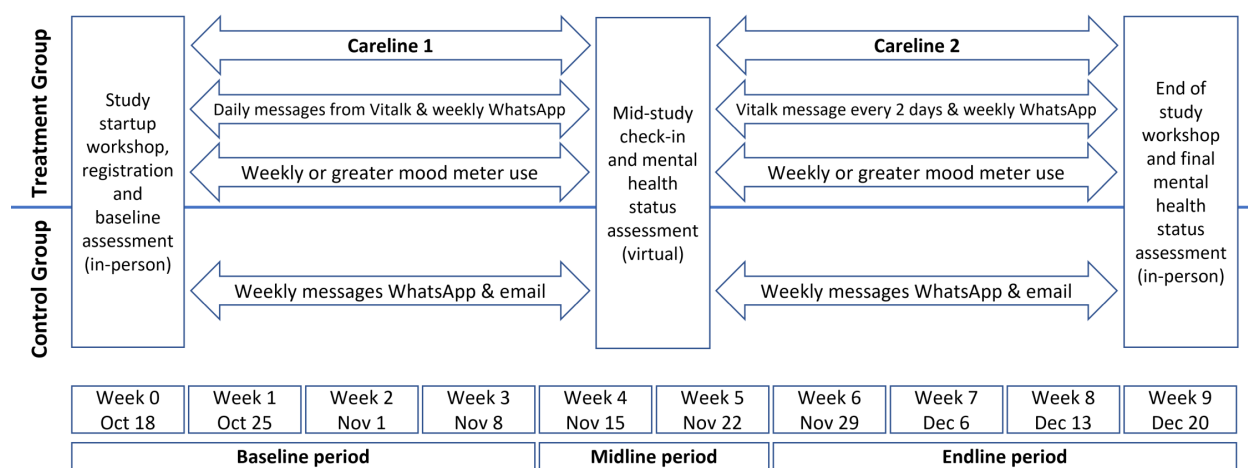
## 161 **Study ethics approval, procedures, and participant retention**

162 The University Research Co. (URC, no reference #) Institutional Review Board and the University  
163 of Malawi Research Ethics Committee (UNIMAREC), approved the study protocol (reference #  
164 P.09/20/84) on October 8 and 15, 2021, respectively. The trial was registered retrospectively with the  
165 ISRCTN registry (trial registration number: ISRCTN16378480), because the registration process took  
166 longer than anticipated and was delayed due to administrative constraints. The authors confirm that all  
167 ongoing and related trials for this intervention were registered.

168 In Malawi, Internet access and the use of apps through mobile phones requires expensive data  
169 packages. Participants received 3 data packages of 5 gigabytes (GB) valued at US\$10 each (distributed  
170 during the startup workshop, halfway through the study, and at the final workshop). This data allowance  
171 covered a minimum of at least 1 month of an hour of daily use of Vitalk or web resources. At the startup  
172 and final workshops, participants received a transport allowance (US\$10) and a food allowance (US\$5),  
173 following government guidelines. These allowances were not tied to active participation in the trial to  
174 avoid any undue influence, and participants received no additional incentives. As the principal means of  
175 participant retention and optimizing the response rate, both study groups received weekly email and  
176 WhatsApp messages encouraging them to engage with their app or website resources. During the  
177 baseline period, the management team provided the treatment group with detailed download and sign-  
178 in instructions for the app via WhatsApp, after noticing low sign-in numbers and receiving messages  
179 about sign-in difficulties. The research team was blinded to this process.

## 180 Study timeline

181 Participant recruitment took place between October 15 and 24, 2021. Ethics approval and  
 182 participant recruitment took longer than planned in the protocol, which delayed the start of the study  
 183 by 1 week. The study spanned 56 days (October 25-December 19, 2021), with startup workshops the  
 184 week of October 18 and end-of-study workshops the week of December 20 (Fig 2). The research team  
 185 held several onboarding workshops each time to accommodate the large number of participants and  
 186 their varied work schedules, while complying with physical distancing requirements due to COVID-19.  
 187 The length of the study enabled treatment group participants to complete exercises for 2 “carelines”  
 188 (thematic conversations addressing anxiety, depression, stress, relationships, or the COVID-19  
 189 pandemic) over a period of a month for each. The baseline, midline, and endline periods take into  
 190 account that participants completed their first mental health assessments at varying times after  
 191 registration and repeated assessments with varying frequencies before completing their selected  
 192 carelines. Several participants completed assessments in a post-endline period after the study  
 193 concluded; they were excluded from the analysis.



194 Fig 2. 2021 Study timeline.

## 195 Sample size and randomization

196 The required study population size for paired tests of correlated means was calculated using  
 197 STATA 17 and is based on the following information from published literature:

- 198 ● Pre-post-treatment difference of 1.5 points on standard scales for mental health assessments  
 199 using 2-tailed tests
- 200 ● Standard deviation of the difference = 6
- 201 ● Power 80%
- 202 ● Significance level 5%

203 This resulted in a minimum of 128 participants per study arm. Given the continuity experience  
 204 (the proportion of participants completing the pre- and post-treatment assessments for depression,  
 205 anxiety and stress) of 20-45% reported by Daley et al. [16], we assumed that the dropout rate could be  
 206 as high as 75% for at least 1 of the standard mental health assessments. This required a sample of 512  
 207 participants per arm to yield an effective post-intervention sample of 128. Furthermore, if 20% of

208 potential participants did not meet inclusion criteria or dropped out for other reasons, about 640  
209 enrollees were needed initially per arm.

210 The management team assigned randomized trial participant numbers (trial ID) using permuted  
211 block randomization sequences, generated by the website Randomization.com [20], to maintain a  
212 balance across the study arms. Block size varied between 4 and 10 randomly ordered treatment  
213 assignments. A random sequence of trial IDs between 1001 and 3000 was generated using the Research  
214 Randomizer [21]. We achieved allocation concealment by charging the trial management team with  
215 group assignments using randomized trial IDs and permuted block randomization. Assignment and  
216 personal identifying information was not shared with the research team responsible for data analysis to  
217 ensure that it remained blinded throughout trial implementation.

## 218 Study interventions

### 219 Treatment group

220 Participants in the treatment group were asked to download and register with the mental health  
221 chatbot app, Vitalk, and to use it daily over the 8-week study period. The aim of Vitalk is to improve  
222 mental wellbeing by reducing stress, anxiety, depression, and burnout and increasing resilience using a  
223 preventative approach to mental health. Vitalk is an automated chatbot, using an avatar named Viki (Fig  
224 3) to deliver mental health content in an innovative conversational format.

225



226 **Fig 3. Viki, Vitalk's virtual mental healthcare assistant.**

227 The conversations are based on insights and strategies taken from Cognitive Behavioral Therapy  
228 (CBT) and Positive Psychology [22, 23], which include (but are not limited to): psychoeducation;  
229 cognitive restructuring; behavioral activation; gratitude; and practical exercises (breathing, relaxation,  
230 and meditation). The goal of the conversations is to help users reflect on experiences and learn  
231 techniques to manage stress, mood, and anxiety. A mood tracking tool aids reflection, "emojis" mimic a  
232 natural human interaction, and gamification increases user engagement [24]. Vitalk users choose  
233 between different thematic conversations ("carelines") and use standardized instruments to assess their  
234 mental health and resilience status before and after completing a careline at monthly or more frequent  
235 intervals. The app provides users with feedback and advice about their assessment scores. Carelines are



236 continuously refined to ensure the language and emotional expression matches the needs of different  
237 users. If user input in the PHQ-9 questionnaire suggests suicidality (e.g., “life isn't worth living”) or  
238 suicidal ideation, the risk module is triggered and the chatbot delivers information about emergency  
239 support, including the contact information of local psychologists.

240 The version used in Malawi consisted of 5 carelines: anxiety; depression; stress; relationships;  
241 and the COVID-19 pandemic. Throughout the 56-day study period, users selected 2 carelines to  
242 complete (4 weeks for each). During the first careline period (the first 4 weeks of the study), the user  
243 was engaged in daily conversations, each lasting 5-10 min. This changed to an engagement every other  
244 day during the second careline period (4 weeks). After the study, users were free to continue using the  
245 app and experience the other carelines, receiving a final data bundle at the last workshop to enable  
246 them to do so.

247 The chatbot avatar Viki was developed through focus groups and pilot testing in Brazil. A team  
248 of clinical psychologists and healthcare professionals from Vitalk wrote the conversations used by Viki  
249 and adapted them to the Malawi context. Unlike that of Brazil, the Malawi version did not include  
250 natural language understanding (NLU). The chatbot was styled and designed by an information  
251 technology, product development and user experience (UX) team at Vitalk in São Paulo. The app is built  
252 on ruby and JavaScript as a free-to-use service, hosted within an instant messenger platform, accessible  
253 from Android devices.

254 Vitalk does not aim to replace a healthcare professional or to offer treatment. Users are made  
255 aware of this limitation in the terms and conditions required for consent; they are advised to seek  
256 additional support if they show a high risk of depression, anxiety, or burnout in their mental health  
257 assessments.

## 258 **Control group (waitlist)**

259 Participants in the control group were provided access to a webpage in their Internet browser  
260 with links to 4 mental health resources: Mental Health Foundation in the United Kingdom[25];  
261 WHO/Geneva mental well-being resources for the public [26]; WHO/Geneva #HealthyAtHome - Mental  
262 health [27]; and the Doing What Matters in Times of Stress: An illustrated Guide [28]. These resources  
263 had no interactive features (passive) and relied on participants’ initiative to access them. Control group  
264 participants were considered to be wait-listed since they were given access to the Vitalk app after the  
265 completion of the study.

266

## 267 **Outcomes**

### 268 **Primary outcome measures**

269 This study used the scores from several standardized mental health and resilience assessments  
270 as outcome measures. In addition, we introduced a new measure of resilience-building activities. In the  
271 analysis, we used total assessment scores as well as risk groupings to establish clinical relevance  
272 following classifications from published literature (based on the sensitivity and specificity of the  
273 assessments). All mental health and resilience questionnaires were pilot tested by Vitalk and members  
274 of the research team in Malawi.

#### 275 **Patient Health Questionnaire (PHQ-9)**

276 The PHQ-9 is a 9-item self-reported scale that evaluates symptoms of depression over the past 2  
277 weeks (e.g., “how often have you been bothered by feeling down, depressed, or hopeless”). Item  
278 response options use a Likert scale ranging from 0 (not at all) to 3 (nearly every day), with a maximum  
279 score of 27. According to the literature, total scores are divided into 5 risk categories: none (0–4); mild  
280 (5–9); moderate (10–14); moderately severe (15–19); and severe (20+) symptoms. The PHQ-9 has been  
281 widely used and validated in Malawi [29].

#### 282 **Oldenburg Burnout Inventory (OLBI)**

283 Burnout is linked to relatively high work requirements and limited resource availability for  
284 managing them. The discrepancy between resources and challenges creates a significant negative  
285 emotional state. The OLBI has 16 items rated 1 to 4, with a maximum score of 64. Eight items describe  
286 exhaustion (OLBI-E) and 8 describe disengagement (OLBI-D) [30]. The questionnaire includes both  
287 straight and reversely worded items in both dimensions. According to the literature, total scores are  
288 divided into 3 risk categories: low (16-35); moderate (36-43); and high (44+). OLBI has been validated  
289 and used in low- and middle-income countries (LMICs) [31].

#### 290 **Generalized Anxiety Disorder (GAD-7)**

291 The GAD-7 is a 7-item self-reported scale to assess anxiety symptoms over the past 2 weeks  
292 (e.g., “how often have you been bothered by feeling afraid something awful might happen”). Scores  
293 range from 0 (not at all) to 3 (nearly every day), with a maximum score of 21. The total scores are  
294 divided into 4 risk categories: none (0–4); mild (5–9); moderate (10–14); and severe (15+) symptoms.  
295 GAD-7 has been used effectively in Malawi and other LMICs with comparable demographics [32].

#### 296 **UCLA Short (three-item) Loneliness Scale (UCLA Loneliness)**

297 UCLA Loneliness was added to Vitalk for this study. While there is no agreed upon definition of  
298 “loneliness” in research, it is described as an unwelcome, painful, and unpleasant feeling, and a fluid  
299 experience that can come and go over a short time or persist in the longer term. The UCLA Loneliness  
300 scale consists of 3 items rated 1 to 3, with a maximum score of 9. Total scores are divided into 2 risk  
301 categories: non-lonely (3-5) and lonely (6+) [33, 34].

## 302 **5-item Resilience-Building Behavior Scale**

303 A novel addition to this study and Vitalk was an assessment of participants' resilience-building  
304 behaviors related to stress management, self-awareness, self-care, purpose, and connection with others  
305 (adapted from a toolkit for building health worker resilience [35]). While numerous scales for measuring  
306 resilience exist, we did not find any publications on the validity and reliability of instruments measuring  
307 resilience-building activities. The questionnaire had 5 items rated 1 to 4, with a maximum score of 20,  
308 related to the frequency with which participants performed resilience-building activities over the past 2  
309 weeks. Scores were divided into 3 activity levels: low or none (5-10); moderate (11-15); and high (16-  
310 20).

## 311 **14-item Resilience Scale (RS-14)**

312 Resilience refers to the ability to withstand or adaptively recover from stressors, promoting  
313 psychological and physical wellbeing. Resilience is negatively correlated with symptoms of generalized  
314 anxiety and post-traumatic stress and positively correlated with gratitude, optimism, and positive affect.  
315 The 5 characteristics of resilience are: meaningful and purposeful life; perseverance; equanimity; self-  
316 reliance; and existential aloneness [36]. The RS-14 has 14 items rated 1 to 7, with a maximum score of  
317 98. Total scores are divided into 6 resilience levels: very low (14-56); low (57-64); on the low end (65-  
318 73); moderate (74-81); moderately high (82-90); and high (91+). RS-14 has been validated and used in  
319 LMICs [37, 38]

320 While the app registers the actual scores, to simplify communication of risk to users, Vitalk  
321 reports 4 levels of mental health risks and resilience for its 4 standard assessments (GAD-7, PHQ-9, OLB, I,  
322 and RS-14): very low; low; high; and very high risk. The Vitalk risk classification differs from published  
323 levels as follows: 1 additional level for OLB, I; 4 instead of 5 levels for PHQ-9; and 4 instead of 6 levels for  
324 RS-14. For the purposes of this trial, we used only published risk classifications based on actual test  
325 scores.

326 Participants completed all 6 assessments online, which together required about 20 minutes.  
327 Participants in both arms were allowed to take the assessments repeatedly and saw their results  
328 immediately after answering the 6 questionnaires. Participants were prompted either by the avatar Viki  
329 or What's App messages and emails to take the assessments at specific intervals during the baseline,  
330 midline, and endline periods.

## 331 **Secondary measures**

### 332 **Mood meter**

333 Users of the Vitalk app had the option of assessing their mood using emojis representing 5  
334 mood levels (0-4): very bad; bad; okay; good; and very good. Emojis are successfully used in sentiment  
335 analysis and show a stronger emotion compared to words [24]. The timing of mood assessments was  
336 matched to mental health assessments prior to data analysis since participants took them  
337 independently. The mood meter was part of the intervention to raise self-awareness, and only available  
338 to the treatment group.

339 **Participant engagement**

340 For the treatment group, we captured several measures related to participant engagement over  
341 the study period: number of interactions with Vitalk; number of days with interactions with the app;  
342 number of days between the first and last day of interaction with the app; and total number of hours  
343 spent on the app. For the control group, we captured 2 measures related to participant engagement:  
344 number of days they accessed web resources and number of web resource click-throughs. All raw  
345 engagement measures were converted to z-scores for both groups to account for differences in metrics  
346 and distributions in each group. Standardized hours spent on Vitalk, and standardized number of days  
347 with web resources accessed, were retained as determinants of mental health and resilience scores.

348 **Smartphone experience**

349 During registration, we measured participants' smartphone experience by asking how often  
350 (never, less often, weekly, several times a week, daily) they used the following features (each scored 0  
351 to 4): Internet; WhatsApp; Facebook, Instagram, or twitter; chat app; mobile money; games; email;  
352 videos; and music. Smartphone experience is a composite of the frequency of use for all 9 features, with  
353 a maximum score of 36.

354 **Current or past exposure to mental health counseling**

355 During registration, participants were asked whether they had any current or past exposure to  
356 mental health counseling. Possible responses were currently receiving counseling; received counseling in  
357 the last 6 months; received counseling in the last 2 years; received counseling more than 2 years ago;  
358 and never received counseling. Participants with any counseling experience were then asked whether  
359 counseling was for mild or moderate mental health issues, or for acute or severe mental health issues.  
360 Participants who responded to the latter were excluded from the study and given the contact for local  
361 psychologists.

362 **Current or past chat app and website use for mental health**

363 At registration, participants were asked about their current use of a chat app for mental  
364 wellbeing (with the response options: never; sometimes; and often). Past use was assessed through a  
365 binary yes or no response. We created a composite "chat app for mental health" variable with values  
366 ranging from 0 (no chat app use) to 5 (current often use and past use) by combining responses from  
367 both questions. Current and prior use of Internet-based resources about mental wellbeing was assessed  
368 in the same manner.

369 **Impact of COVID-19**

370 Four questions assessed how the COVID-19 pandemic impacted study participants. The first 3  
371 questions asked were about the impact on workload, workhours, and stress levels over the past 12  
372 months. Possible response options for each question (scored from 0 to 4) were: greatly decreased;  
373 somewhat decreased; stayed the same; somewhat increased; and greatly increased. The sum of the  
374 responses to these questions created a composite COVID-19 effect variable. The fourth question  
375 inquired whether COVID-19 prevented participants from going into work over the past 12 months.  
376 Response options (scored from 0 to 3) were: no disruptions at all; several days over the entire year;

377 several days every month; and several days every week. Participants who did not work at all during this  
378 period were coded as missing.

379 Participants completed an online questionnaire about their smartphone experience, current or  
380 past exposure to mental health counseling, current or past chat app and website use for mental health,  
381 and impact of COVID-19.

### 382 **Anonymous online participant experience questionnaire**

383 During the final workshops, participants from both arms had the opportunity to complete an  
384 anonymous online questionnaire about their experience using either the Vitalk app or the web  
385 resources. Questions focused on the frequency of use, reasons for infrequent use, relevance and  
386 usefulness, ease of use, and specific difficulties encountered. Some key findings related to study  
387 outcomes are highlighted in this paper; a separate comprehensive analysis will be published together  
388 with the findings from focus group discussions.

## 389 **Data analysis**

390 Participant characteristics are presented as proportions or means (SD) for the treatment and  
391 control groups.

392 **Mixed linear model.** We used multilevel mixed-effects generalized linear models (STATA *meglm*  
393 command) to analyze primary participant-reported outcome measures for all 6 mental health and  
394 resilience assessments over the baseline and endline periods. A full factorial model of study group and  
395 assessment period was fitted to represent fixed effects. Participants' trial ID specified the random effect  
396 in this model. The parameter estimate of interest was the coefficient of the interaction between study  
397 group and assessment period, which is equivalent to a difference-in-differences (DiD) estimator. The DiD  
398 estimator compares the differences in outcomes before and after treatment for the treatment group  
399 with any changes in the control group. It is a measure of additional change between base- and endline in  
400 the treatment group, if the value is statistically significant at a 0.05 level or smaller. DiD estimators were  
401 robust, because only valid assessments for the baseline and endline periods were included in the  
402 analysis, avoiding the need for inter- or extrapolating missing values. Because of randomization,  
403 covariates were not included in the mixed models. Data from the midline and any assessments  
404 completed after the 8-week study period (post-endline) were not included in the analysis because of a  
405 much lower number of observations in these compared to the other periods.

406 **Effect size.** To compare the different outcome measures, Cohen's *d* was calculated as the mean  
407 difference between the 2 groups divided by their common SD and interpreted as small (*d*=0.2), medium  
408 (*d*=0.5), and large (*d*=0.8).

409 **Reliable change index.** To assess whether the change in outcomes (the total score for each  
410 assessment, between baseline and endline) is statistically reliable, and not due to measurement  
411 variability inherent to the assessments alone, we calculated a reliable change index (RCI). The RCI is the  
412 standard error of the difference between the 2 measurements,  $SE_{diff}$ , in equation (1).  $SD_{bas}$  is the  
413 standard deviation of the baseline observations, and *r* is Cronbach's alpha representing the reliability of  
414 the measurement instrument. Each assessment instrument has its own RCI.

$$415 \quad RCI = 1.96 \times SE_{diff} = 1.96 \times SD_{bas} \sqrt{2} \sqrt{1 - r} \quad (1)$$

416           **Change in risk levels.** We used total scores from the 4 mental health and 2 resilience  
417 assessments for the mixed linear model, effect size, and RCI estimation. To determine whether the  
418 changes between the pre- and post-intervention periods matter from a clinical perspective, the total  
419 assessment scores – a continuous variable – were converted to mental health risk and resilience levels –  
420 an ordinal variable – using the published classifications described above for each type of assessment  
421 (e.g., depression scores from the PHQ-9 are divided into 5 levels ranging from none to severe). A change  
422 in risk levels was calculated as either a drop or increase of 1 or more levels for each mental health and  
423 resilience metric. For participants registering a change in risk level, the proportion with reliable change  
424 was calculated. Reliable change was established if the difference between baseline and endline scores  
425 were equal or greater than the RCI.

426           **Determinants of mental health and resilience.** All mental health and resilience outcomes were  
427 regressed against all participant characteristics using ordinary least squares models, controlling for study  
428 group and assessment period. All observations with valid baseline and endline assessments for the  
429 control and treatment groups were included in the analysis. A separate analysis was done for the  
430 treatment group to assess which covariates unique to this group (mood meter scores and carelines)  
431 affected the outcomes.

432           In general, we chose a p-value of 0.05 or less as the level of statistical significance. However, we  
433 also considered larger p-values of  $p \leq 0.10$  as trending towards statistical significance, which may be  
434 clinically relevant for improving the practice of self-help. Equally important as the p-value was the  
435 consistency of patterns across all mental health and resilience assessments and their agreement with  
436 behavioral theory. All data were analyzed with STATA 17.0 (StataCorp LLC, College Station, TX).

437

## 438 Results

439 Out of 1493 study participants randomized 392 received the treatment and 577 were wait listed  
440 controls. These numbers dropped to 355 in the treatment arm and 481 in the control arm because of  
441 non-adherence to study group assignments. A total of 836 participants had valid mental health and  
442 resilience assessments. However, the number of participants completing assessments varied  
443 substantially by study period, as seen in Table 2.

444 **Table 2. Number and percent of participants completing any mental health and resilience assessment**  
445 **by study period.**

Study period	Control Group n	Control Group %	Treatment Group n	Treatment Group %	Total n
Baseline	469	60%	318	40%	787
Midline	77	30%	181	70%	258
Endline	304	54%	260	46%	564
Post-endline	13	13%	86	87%	99

446 Numbers include singular assessments that were completed in one study period only, which were  
447 excluded from analysis. Mid- and post-endline assessment were also excluded from the analysis.

448  
449 Using complete case analysis (CCA), only participants who finished base- and endline  
450 assessments were included in the calculations of DiD estimators using mixed-effects linear modeling,  
451 effect size estimation, and change in risk levels. We used CCA because missing data seem to be random  
452 as shown in the CONSORT diagram (Fig 1), which includes access to the Vitalk app or website issues, and  
453 conditionally independent of the study outcome measures. Moreover, study population characteristics  
454 of all participants with valid mental health and resilience assessments were very similar in the control  
455 and treatment groups (Fig 4). The relatively small numbers at midline and post-endline in the control  
456 group are possibly related to the passive nature of the intervention for this group. The interactive Vitalk  
457 app seems to have enticed assessment behavior in the treatment group, which experienced a much  
458 smaller drop.

459 Table 3 shows the effective sample size and missing data by type of assessment. The much  
460 higher proportion of missing data for the loneliness and resilience building assessments is because  
461 participants had difficulties accessing these assessments, which were not part of the original Vitalk app  
462 but were added for this study. These 2 assessments were the last in the series of the 6 assessments  
463 suggesting that a majority of Vitalk users stopped completing assessments after RS-14. The control  
464 group did not experience a similar drop. Overall, 511 participants (296 in the control and 215 in the  
465 treatment group) had no protocol violations and completed baseline and endline assessments for GAD-  
466 7.

467

468 **Table 3. Effective sample size and missing data by type of mental health and resilience assessment**  
469 **with completed baseline and endline.**

<b>Assessment</b>	<b>Control Group n</b>	<b>Treatment Group n</b>	<b>Total n</b>	<b>Control Missing (%)</b>	<b>Treatment Missing (%)</b>
Anxiety (GAD-7)	296	215	511	185 (38%)	140 (39%)
Depression (PHQ-9)	286	201	487	195 (41%)	154 (43%)
Burnout (OLBI)	291	211	502	190 (40%)	144 (41%)
Resilience (RS-14)	280	183	463	201 (42%)	172 (48%)
Loneliness (UCLA)	280	70	350	201 (42%)	285 (80%)
Resilience building activities	278	85	363	203 (42%)	270 (76%)

470 Assessments shown in the order completed by participants.

471 These are the sample sizes used in DiD, effect size, and change in risk level analyses.

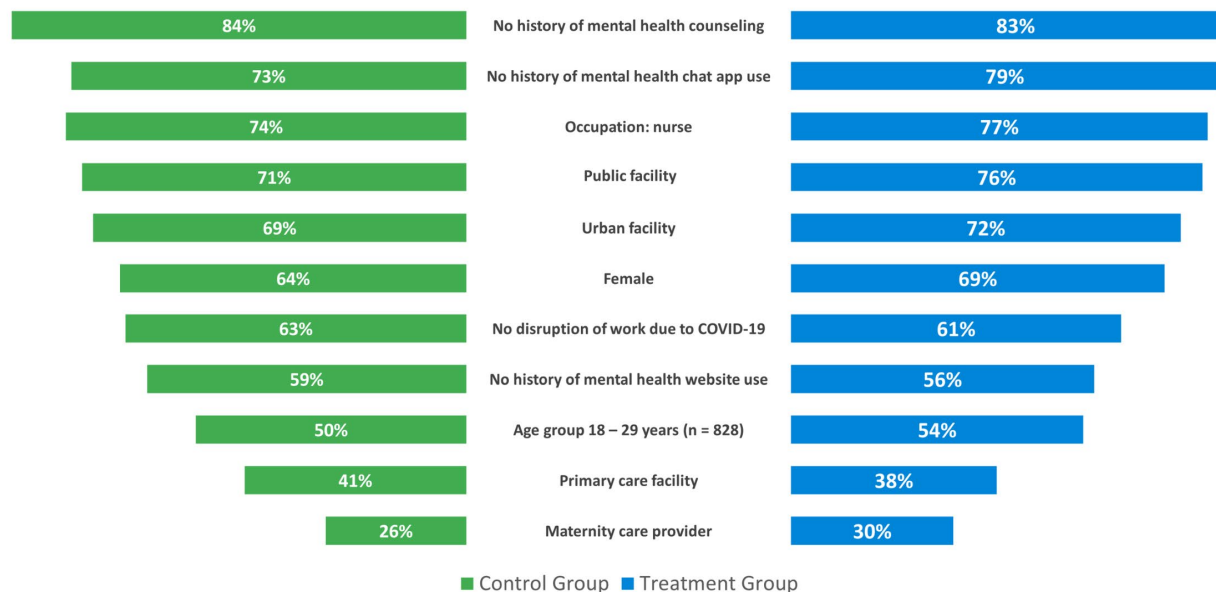
472

### 473 **Participant characteristics**

474 The distribution of characteristics for the 836 participants with valid mental health and  
475 resilience assessments was balanced between the control and treatment groups as shown in Fig 4. The  
476 difference between groups varied by 1 to 6 percentage points. Overall, participants were young (under  
477 30 years) and female. Most were professional nurses working in public secondary or tertiary healthcare  
478 facilities in urban areas. Maternity care was the most common type of care provided. Fewer than 30%  
479 had ever used a chat app for mental health and more than 40% had ever accessed websites with mental  
480 health content. One in 6 participants had a history of mental health counseling. The level of experience  
481 in performing 9 different tasks with their smartphones was high (a mean of around 29 out of a  
482 maximum score of 36) and nearly the same in both study groups (Fig 5), corresponding to several times  
483 per week to daily use. Both groups reported the same effect of the COVID-19 pandemic. More than 1 in  
484 3 participants mentioned that the pandemic had disrupted their work. The average effect of COVID-19  
485 on participants' workload, workhours, and stress levels was around 8 out of a maximum score of 12 (Fig  
486 5), corresponding to somewhat increased workload and stress levels.

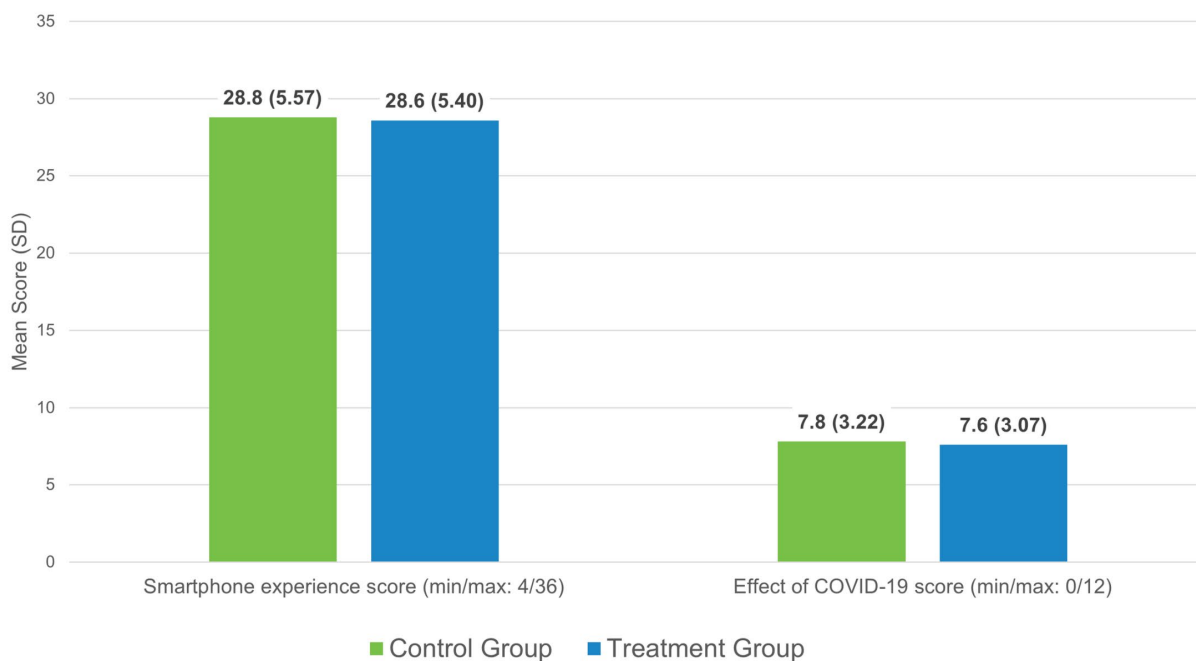
487





488  
 489 **Fig 4. Study participant characteristics.** Only the most frequent categories are shown (n = 836 [481  
 490 control group, 355 treatment group] for all variables except Age with n = 828)

491



492  
 493 **Fig 5. Mean smartphone experience and COVID-19 impact scores (n = 836).**

494

## 495 Participant adherence to treatment and control interventions

496 Table 4 shows the degree to which study participants interacted with the Vitalk app or the  
497 mental health resource websites. Treatment group participants had a high number of interactions  
498 averaging 92 per day over the average duration of app use of 24 days. The distribution was skewed  
499 towards a lower use frequency. The average time the Vitalk app was used per day over the entire study  
500 period of 56 days was about 11 minutes and per day of use about 26 minutes. Study participants in the  
501 treatment group made frequent use of the mood meter checking it about every other day when using  
502 Vitalk. The distribution was skewed toward a lower frequency. The average mood meter score was close  
503 to a 'good' rating.

504 Control group participants accessed the website mental health resources infrequently – about  
505 twice over the study period of 56 days, with a distribution skewed towards 1 day. This was accompanied  
506 by about one click-through to the mental health resources offered, which was the only other measure of  
507 adherence available in this group. We did not measure time spent on resource use and mood status for  
508 the control group, because checking mood status was considered as raising self-awareness and  
509 therefore part of the intervention.

510 **Table 4. Participant adherence to treatment and control interventions**

<b>Group/Variable</b>	<b>Mean</b>	<b>Standard Deviation</b>
<b>Treatment Group</b>		
Number of interactions with Vitalk app	2,200	6,294
Duration of app use in days	24	14
Time spent in the Vitalk app in hours	10.4	7.7
Number of time mood meter used	13	15
Mood meter score on a scale 0 (very bad) to 4 (very good)	2.9	1.0
<b>Control Group</b>		
Number of days web resources were accessed	1.9	2.0
Number of click-throughs	1.2	0.7

511

## 512 Summary of outcomes at baseline and endline

513 Table 5 shows summary statistics for the 4 mental health and 2 resilience assessments at  
514 baseline and endline. Mean anxiety, depression, and loneliness scores fell into the lowest risk level  
515 during both assessments. Burnout scores were at moderate risk. Resilience was moderate to moderately  
516 high, and resilience-building activities were moderate at both times. Both control and treatment groups  
517 saw an improvement in mental health and resilience scores between the 2 assessment periods.  
518 However, the control group started at slightly lower mean mental health and higher resilience scores.  
519 While the differences between group means were statistically significant, they were within the same risk  
520 category and too small to be of clinical relevance. The DiD analysis takes the difference in baseline  
521 values between groups into account by comparing the change in each group over time. The change in  
522 risk categories and reliable change index complement the DiD estimator and provide a greater sense of  
523 the practical benefits of the Vitalk app.

524 **Table 5. Mental health and resilience scores from completed assessments by study period and group.**

Questionnaire	Control Group		Treatment Group		Total	
	Baseline	Endline	Baseline	Endline	Baseline	Endline
<b>PHQ-9</b>						
n	510	634	429	496	939	1130
Mean score ***	3.67	2.99	4.29	2.72	3.95	2.87
Standard deviation	4.01	4.04	4.26	3.52	4.13	3.82
Avg. no. of assessments	2.9	3.3	3.2	4.6	3.0	3.9
<b>OLBI</b>						
n	471	583	379	441	850	1024
Mean score ***	38.00	36.55	38.84	36.63	38.37	36.59
Standard deviation	6.18	6.83	5.74	6.41	6.00	6.65
Avg. no. of assessments	2.6	3.0	2.8	4.3	2.7	3.6
<b>GAD-7</b>						
n	545	669	468	550	1013	1219
Mean score ***	4.24	2.89	4.73	2.93	4.46	2.91
Standard deviation	3.74	3.63	3.86	3.31	3.80	3.49
Avg. no. of assessments	3.1	3.6	3.3	4.9	3.2	4.2
<b>UCLA Loneliness</b>						
n	433	531	84	106	517	637
Mean score ***	5.18	4.69	5.70	4.92	5.26	4.73
Standard deviation	1.52	1.59	1.45	1.74	1.52	1.61
Avg. no. of assessments	2.4	2.7	1.3	2.0	2.2	2.6
<b>Resilience Building</b>						
n	422	521	128	117	550	638
Mean score ***	13.20	14.01	12.80	14.84	13.11	14.16
Standard deviation	3.11	3.40	2.62	2.65	3.00	3.29
Avg. no. of assessments	2.3	2.7	1.8	1.6	2.2	2.5
<b>RS-14</b>						
n	438	540	327	394	765	934
Mean score ***	79.23	81.05	77.69	82.19	78.57	81.53
Standard deviation	10.02	11.36	10.81	10.57	10.39	11.04
Avg. no. of assessments	2.4	2.8	2.6	4.3	2.5	3.4

525 Mean score \*\*\*: A blue frame shows statistically significant differences between mean scores at  
 526 baseline and endline based on within group t-tests. P-values are < 0.01 for all assessments in the control  
 527 and treatment groups.

528 Mean score \*\*\*: Shaded cells show statistically significant differences between mean scores comparing  
 529 study periods for each study group based on between group t-tests. P-values are < 0.05 for differences  
 530 at baseline for all assessments and not significant at endline except for Resilience Building where  
 531 baseline scores did not differ significantly between groups but endline results did.

532 All summary statistics are based on participants with valid baseline and endline data using all  
 533 assessments completed during each assessment period. The average number of assessments taken each  
 534 period varied between 1 and 5, depending on the type of assessment and was generally higher at  
 535 endline.

536 Using published reference levels and the average score from each assessment for each study  
 537 period, participants were classified according to “moderate to high” mental health risk and “very low to

538 low” resilience levels. As seen in Table 6, fewer participants in the control and treatment groups were  
539 classified as “moderate to high” risk for mental wellbeing and “very low to low” resilience levels at  
540 endline than at baseline. However, decreases in depression, burnout, and anxiety, and increases in  
541 resilience- building activities and resilience were greater in the treatment than control group, consistent  
542 with the changes in mean assessment scores shown in Table 5. Loneliness did not follow this pattern,  
543 with a larger percentage of participants improving in the control than in the treatment group.

544 **Table 6. Study participants with moderate to high risk levels for mental health or low levels of resilience.**

Assessment and risk level	Control Group						Treatment Group						Sample at base- and endline		
	Baseline		Endline		Total		Baseline		Endline		Total		Control Group N	Treatment Group N	Total N
	n	%	n	%	n	%	n	%	n	%	n	%			
<b>Depression: moderate, moderately severe, severe</b>	32	11%	25	9%	57	10%	30	14%	18	9%	48	11%	291	211	502
<b>Burnout: moderate or high</b>	211	74%	187	65%	398	70%	156	78%	121	60%	277	69%	286	201	487
<b>Anxiety: moderate or severe</b>	37	13%	24	8%	61	10%	29	13%	13	6%	42	10%	296	215	511
<b>Loneliness: lonely</b>	148	53%	105	38%	253	45%	44	63%	36	51%	80	57%	280	70	350
<b>Resilience building: low or no activity</b>	49	18%	44	16%	93	17%	14	16%	2	2%	16	9%	278	85	363
<b>Resilience: very low, low, or on the low end</b>	71	25%	54	19%	125	22%	56	31%	38	21%	94	26%	280	183	463

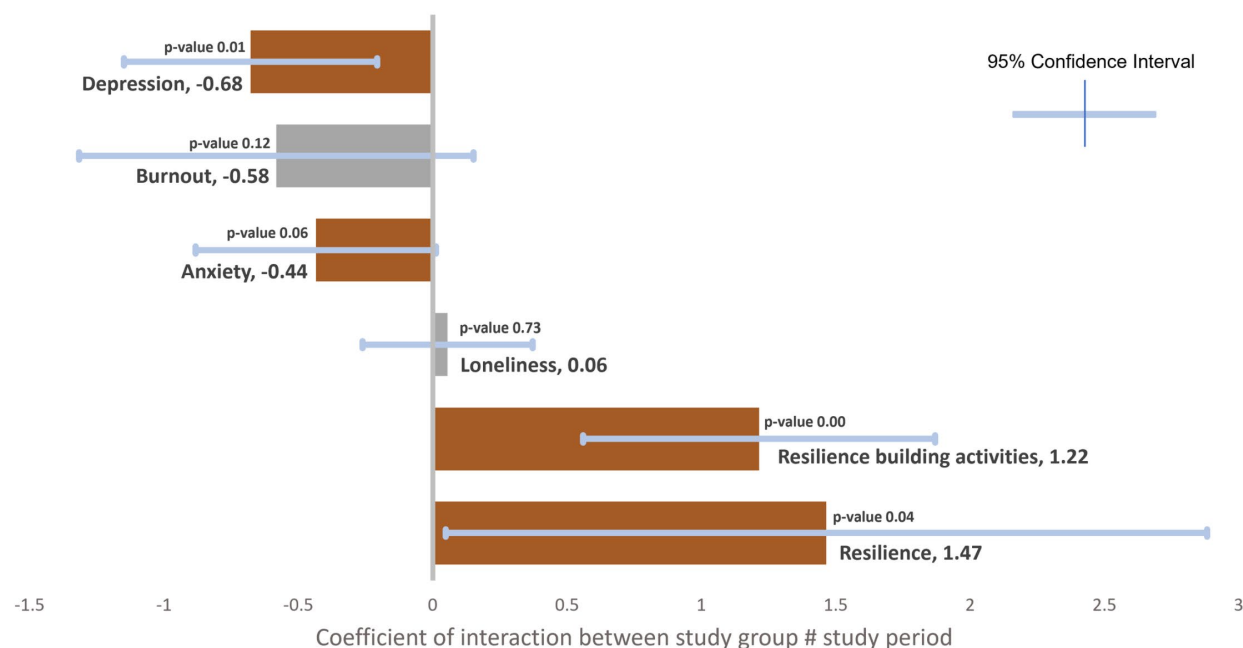
545 Risk levels are based on the average assessment score per participant for each study period.

546

## 547 Difference-in-differences (DiD) estimators

548 The DiD estimates shown in Fig 6 suggested a significant positive effect of Vitalk in reducing  
549 anxiety and depression, and in building resilience and increasing resilience-building activities. The  
550 coefficients for the interaction terms between study group and study period showed that Vitalk was  
551 more effective than the passive control intervention in reducing depression (DiD estimator -0.68 [95% CI  
552 -1.15 to -0.21]), anxiety (DiD estimator -0.44 [95% CI -0.88 to 0.01]), and burnout (DiD estimator -0.58  
553 [95% CI -1.32 to 0.15]). Burnout was just short of statistical significance at the 90% level. Changes in  
554 resilience were positive and significantly greater in the treatment group (DiD estimator 1.47 [95% CI  
555 0.05 to 2.88]). Similarly, this group showed significantly greater resilience-building activities (DiD  
556 estimator 1.22 [95% CI 0.56 to 1.87]). There seemed to exist no treatment effect on loneliness, which  
557 was omitted from the estimation of the RCI and risk level changes.

558



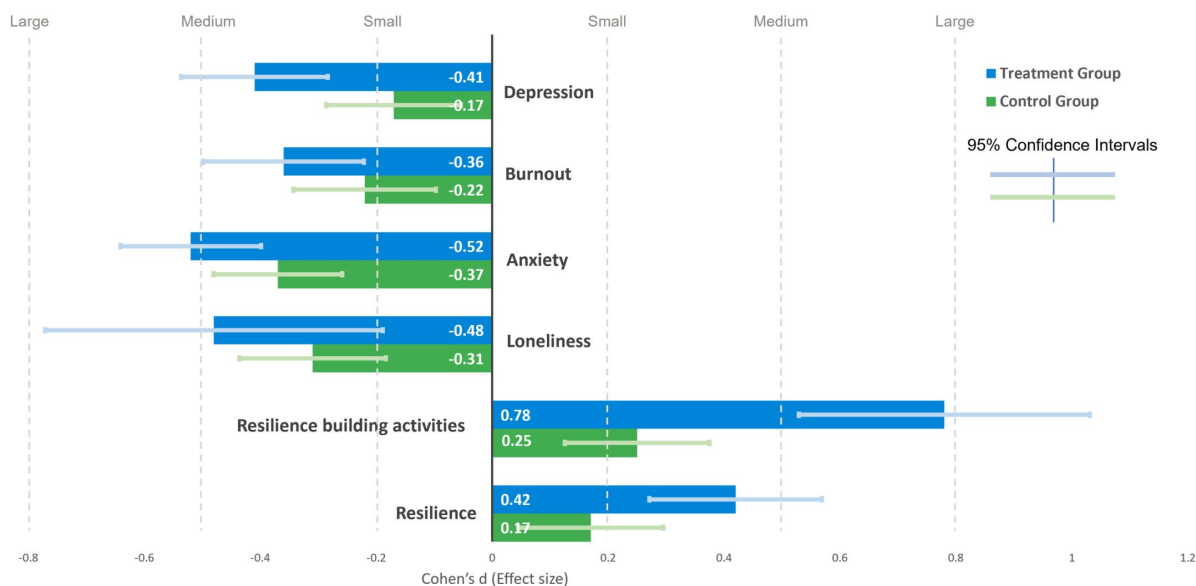
559  
560 **Fig 6. Difference-in-differences estimators with 95% confidence intervals from mixed effects linear**  
561 **models.**

## 562 Effect size

563 Although the DiD estimates showed that Vitalk use positively impacts mental health and  
564 resilience outcomes, they did not inform about the size of the effect since each outcome assessment  
565 uses a different scale. The effect size for each outcome was measured using standardized mean  
566 differences (SMD, Cohen's d). We also calculated Hedges' g – another SMD measure – to account for the  
567 unequal sample size in the treatment and control groups but do not show them separately since the  
568 values with 2 decimals were identical to Cohen's d. Fig 7 shows the results comparing the effect size for  
569 the control and treatment groups. Participants in the treatment group experienced a consistently larger  
570 effect for the mental health and resilience assessments (a medium effect), with the control group  
571 trending towards a small effect. Vitalk use had the largest impact on resilience-building activities with a

572 large effect size (more than 3 times the effect in the control group). Effect size is calculated from  
 573 statistical inference and therefore has confidence intervals (CI) shown in Fig 7. None of the 95% CI  
 574 contain zero, indicating that both study groups experienced a positive effect – a decrease in depression,  
 575 burnout, anxiety, and loneliness, and an increase in resilience-building activities and resilience. Possible  
 576 explanations include increased self-awareness in both groups because of repeated mental health  
 577 assessments, benefits of access to web resources in the control group, and a small but measurable test  
 578 bias due to repeat measurements [39]. Depression and resilience-building activities showed the largest  
 579 difference in effect size between the control and treatment groups, with no overlapping 95% CI.

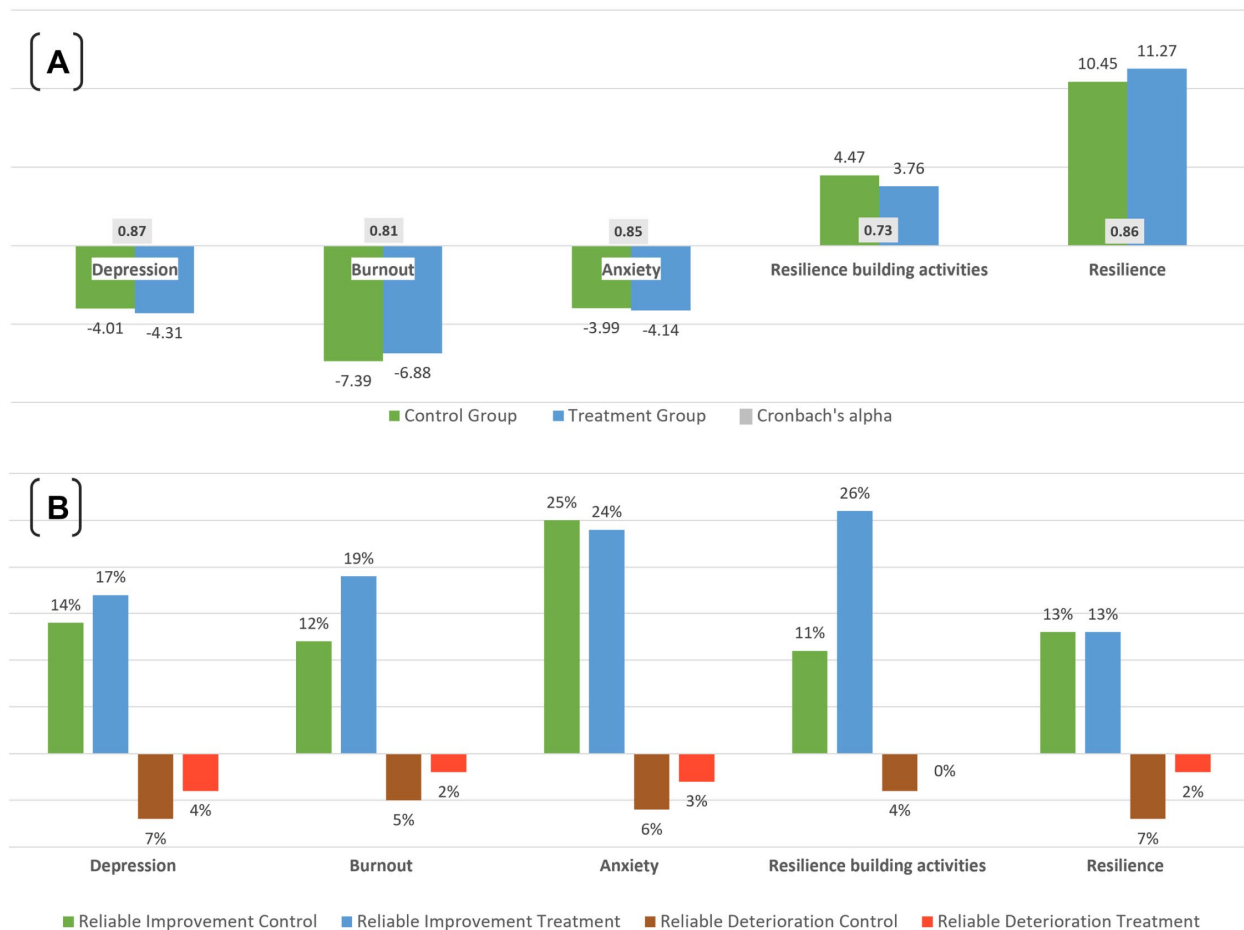
580



581  
 582 **Fig 7. Effect size post-intervention by assessment type and study group.**

### 583 **Reliable change index (RCI)**

584 A comparison of the mean and median scores for mental health and resilience outcomes pre-  
 585 and post-intervention in Table 4 and Table 5 suggests that participants saw improved mental wellbeing  
 586 and resilience outcomes. However, this is the net result of a larger number of participants improving in  
 587 outcomes than participants deteriorating in outcomes. To assess whether this change may have arisen  
 588 by chance alone, we calculated the RCI and the proportion of participants with a change equal or greater  
 589 than the RCI. The results are shown in Fig 8A and Fig 8B. The RCI for each outcome was similar in the  
 590 control and treatment groups. Reliable improvement was greater in the treatment than in the control  
 591 group for depression and burnout and was about the same for anxiety. The proportion that saw a  
 592 reliable increase in resilience-building activities was more than twice in the treatment than that of the  
 593 control group. Reliable change in resilience was the same in both groups. While overall, fewer  
 594 participants experienced a deterioration in mental health and resilience, reliable change was  
 595 consistently greater in the control than in the treatment group. Fig 8A also shows Cronbach's alpha as a  
 596 reliability measure for each assessment, which was used in the calculation of the RCI. Cronbach's alpha  
 597 is very good (greater than 0.80) for 4 assessment instruments and acceptable for resilience-building  
 598 activities.



599  
600 **Fig 8. Reliable change in mental wellbeing and resilience outcomes.** [A] Reliable change index (RCI). [B]  
601 Reliable improvements or deterioration in outcomes between baseline and endline.

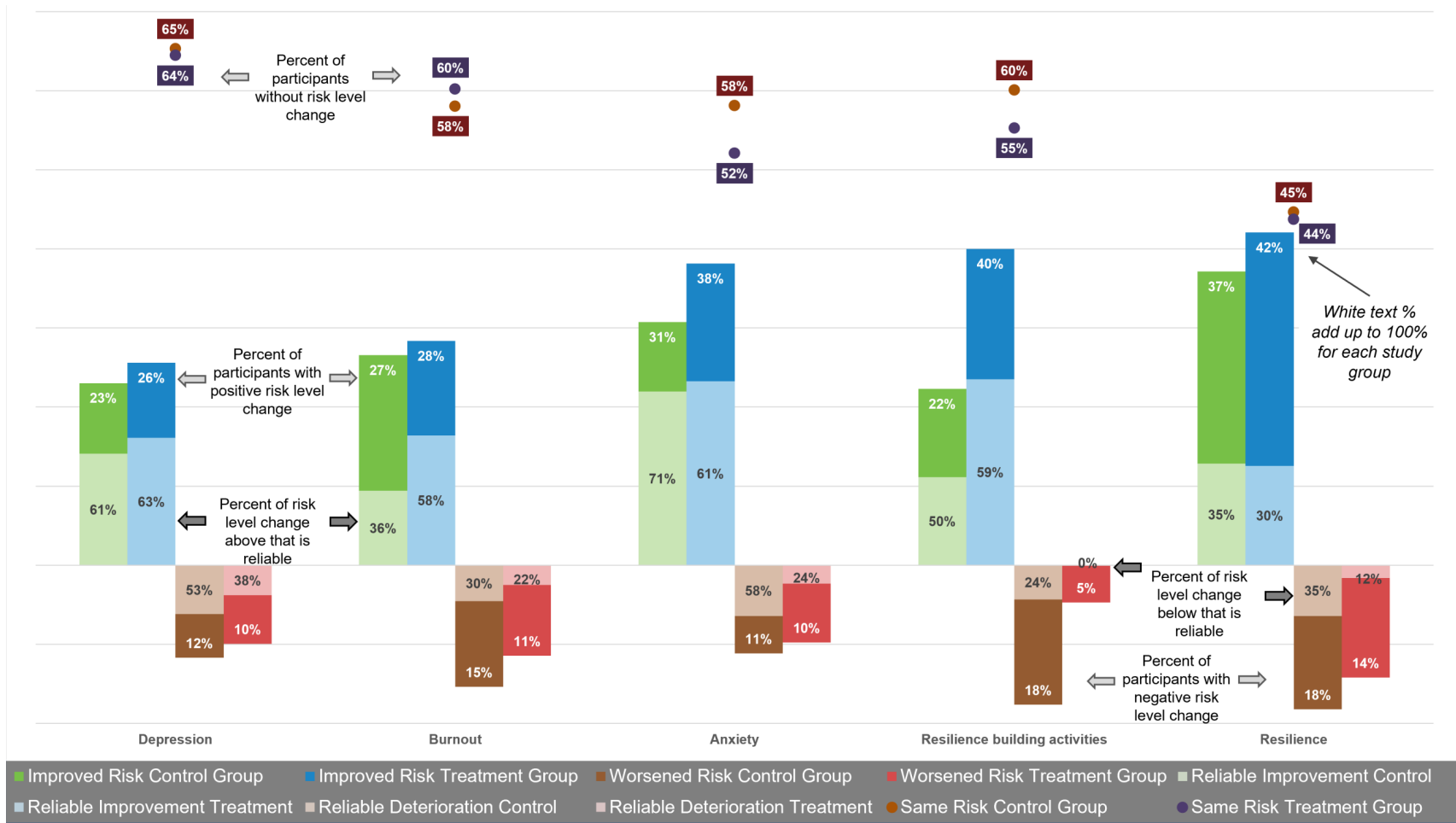
## 602 Mental health and resilience risk level change

603 While any improvement in mean scores for mental health and resilience assessments between  
604 baseline and endline is a positive outcome, a difference in means, although significant, did not inform  
605 whether these were of practical relevance. To assess whether a change in scores equated to a change in  
606 risk levels, we categorized each participant's scores into risk levels using published cutoff points. We  
607 then estimated the proportion of participants changing risk categories by either moving to a lower or  
608 higher level (Fig 9). The improvement in risk levels was consistently greater in the treatment than in the  
609 control group. The effect on anxiety was greater than on depression or burnout. The depression scale  
610 showed the least amount of change, with about two-thirds of participants staying at the same risk level  
611 pre- and post-intervention. The proportion of participants increasing resilience-building activities by at  
612 least 1 level was almost twice as high in the treatment group compared to the control group. The  
613 control group consistently saw more cases with a deteriorated outcome than the treatment group. Not  
614 all the changes of mental health risk or resilience levels were statistically significant. Therefore, Fig 9  
615 also shows the proportion of all those changing risk levels that were reliable based on the RCI. For  
616 burnout, the proportion of reliable change was considerably higher in the treatment group (58%) than in  
617 the control group (36%). For anxiety, 71% in the control group saw reliable change compared to 61% in



618 the treatment group. Participants in the control group whose mental wellbeing and resilience outcomes  
619 deteriorated between study periods experienced a consistently greater reliable change than those in the  
620 treatment group. The proportion of participants with reliable change in Fig 9 is equivalent to the  
621 percentage of participants with reliable improvement or deterioration in Fig 8B.

622



623  
624  
625  
626  
627

**Fig 9. Percent of participants with improved, worsened, or same mental wellbeing and resilience risk levels.** White color text percent: percent without risk level change or with one or more risk levels difference between baseline and endline. Black color text percent: percent of risk level change that is reliable based on the RCI.

628

## 629 **Determinants of mental health and resilience**

630 Ordinary least squares models regressed participant characteristics on mental health and  
631 resilience outcomes using data from all participants with valid mental health and resilience assessments,  
632 controlling for study group and study period. Table 7 shows that several factors have a significant effect  
633 on several mental health and resilience outcomes. Anxiety increased by 0.03 points with each year of  
634 age. Likewise, depression increased by 0.04 points and loneliness by 0.02 points. Burnout appeared to  
635 decrease with age by -0.04 points. Resilience-building activities increased with age by 0.04 points.  
636 Participant gender was negatively associated with anxiety and burnout, with women having worse  
637 outcomes than men by 0.44 points and 0.91 points, respectively. In addition, women showed less  
638 resilience-building activities of -0.40 points than men. While this was consistent with women having -  
639 0.57-point lower resilience levels, this was not statistically significant at the 0.05 level for both variables.  
640 Age and gender were also closely correlated with smartphone use experience (not shown in Table 7).  
641 With each year increment of age, smartphone experience decreased by -0.17 points [95% CI -0.17 to -  
642 0.15]; and females saw -0.99 point [95% CI -1.15 to -0.82] lower smartphone experience than men.

643 Secondary care providers had significantly worse outcomes (higher scores) for anxiety,  
644 depression, and burnout compared to primary care providers, ranging from 0.74 points for anxiety to  
645 1.47 points for burnout. Tertiary care providers scored 2.02 points higher for burnout than primary care  
646 providers. Outpatient care saw consistently higher anxiety, depression, and loneliness than any of the  
647 other types of care, with surgery (depression -1.53 points) and specialty care (depression -2.06 points)  
648 having the largest difference. Maternity care was the only type associated with a significantly 1.45-point  
649 higher burnout than outpatient care. Medical assistants scored significantly lower for anxiety,  
650 depression, and loneliness compared to nurses, but they had 1.62-point higher burnout, and -3.72-point  
651 lower resilience than the latter.

652 Anxiety, depression, burnout, and loneliness outcomes all decreased with the z-scores of time  
653 spent with the treatment or control interventions, ranging from -0.19 points for loneliness, to -0.42  
654 points for anxiety. Conversely, greater use of smartphone features was associated with significantly  
655 higher levels of anxiety, depression, burnout, and loneliness, ranging from 0.04 points for loneliness to  
656 0.08 points for anxiety. Participants with greater smartphone experience had higher resilience-building  
657 activities by 0.04 points. While smartphone use showed a -0.09-point lower level of resilience, this was  
658 not statistically significant (p-value of 0.104).

659

660 Table 7. Determinants of mental health and resilience outcomes for the control and treatment groups combined.

Independent variables	Dependent variables (mental health and resilience scores)											
	Depression (PHQ-9)		Burnout (OLBI)		Anxiety (GAD-7)		UCLA LONELINESS		Resilience building activities		Resilience (RS-14)	
	Coefficient [CI]		Coefficient [CI]		Coefficient [CI]		Coefficient [CI]		Coefficient [CI]		Coefficient [CI]	
z-score of time spent @	-0.35***	[-0.50,-0.21]	-0.34**	[-0.62,-0.05]	-0.42***	[-0.55,-0.28]	-0.19***	[-0.28,-0.10]	0.09	[-0.09,0.27]	0.00	[-0.51,0.51]
Cadre: clinical officer †	0.42	[-0.28,1.11]	1.30**	[0.06,2.55]	0.44	[-0.19,1.08]	-0.17	[-0.57,0.23]	-0.40	[-1.19,0.39]	-2.54**	[-4.74,-0.35]
Cadre: doctor †	-0.16	[-2.15,1.83]	0.64	[-2.78,4.05]	-0.44	[-2.31,1.43]	1.37**	[0.26,2.48]	-2.74**	[-5.03,-0.46]	-0.93	[-6.93,5.07]
Cadre: medical assistant †	-1.34***	[-2.23,-0.45]	1.62**	[0.03,3.21]	-1.07***	[-1.88,-0.27]	-0.87***	[-1.35,-0.39]	0.57	[-0.46,1.60]	-3.72***	[-6.55,-0.89]
Cadre: pharmacist †	0.89	[-0.86,2.64]	2.46	[-0.63,5.55]	1.16	[-0.42,2.74]	0.44	[-0.41,1.28]	0.78	[-1.05,2.60]	-7.44***	[-12.86,-2.01]
Cadre: technician †	0.81	[-0.85,2.47]	-1.16	[-4.12,1.80]	0.92	[-0.54,2.37]	0.35	[-0.72,1.43]	-0.16	[-2.37,2.04]	-1.77	[-7.04,3.51]
Age (years)	0.04***	[0.01,0.06]	-0.04*	[-0.09,0.01]	0.03**	[0.00,0.05]	0.02**	[0.00,0.04]	0.04**	[0.01,0.08]	-0.02	[-0.11,0.06]
Sex ‡	0.18	[-0.22,0.58]	0.91**	[0.20,1.61]	0.44**	[0.08,0.80]	0.11	[-0.11,0.33]	-0.40*	[-0.85,0.04]	-0.57	[-1.83,0.69]
Care level: secondary \$	0.75**	[0.10,1.40]	1.47**	[0.31,2.64]	0.74**	[0.15,1.33]	-0.05	[-0.40,0.30]	0.37	[-0.32,1.05]	-0.30	[-2.37,1.77]
Care level: tertiary \$	1.05***	[0.49,1.61]	2.02***	[1.01,3.04]	1.01***	[0.50,1.52]	0.06	[-0.27,0.39]	0.47	[-0.20,1.15]	-1.21	[-3.04,0.61]
Facility type: private nfp !!	-0.62*	[-1.27,0.03]	-0.10	[-1.27,1.06]	-0.60**	[-1.19,0.00]	0.25	[-0.08,0.58]	-0.25	[-0.92,0.42]	-2.09**	[-4.13,-0.04]
Facility type: private fp !!	0.79*	[-0.07,1.65]	2.07***	[0.53,3.61]	0.49	[-0.28,1.26]	0.96***	[0.48,1.45]	-0.62	[-1.58,0.33]	-2.47*	[-5.17,0.22]
Location: peri-urban ¯	0.49	[-0.17,1.16]	-0.18	[-1.36,1.01]	0.48	[-0.12,1.07]	0.02	[-0.39,0.43]	0.04	[-0.75,0.84]	-0.68	[-2.81,1.44]
Location: rural ¯	0.53*	[-0.01,1.06]	-0.20	[-1.16,0.76]	0.31	[-0.18,0.81]	-0.08	[-0.37,0.22]	0.04	[-0.57,0.65]	1.50*	[-0.21,3.22]
Service: counseling §	-1.62***	[-2.65,-0.58]	1.15	[-0.75,3.04]	-1.02**	[-1.96,-0.08]	0.17	[-0.48,0.81]	-1.19*	[-2.45,0.07]	0.33	[-3.05,3.72]
Service: inpatient care §	-1.20***	[-2.00,-0.40]	-0.05	[-1.51,1.41]	-1.04***	[-1.76,-0.32]	-0.47**	[-0.91,-0.02]	0.24	[-0.68,1.16]	-2.44*	[-5.02,0.14]
Service: intensive care §	-1.42***	[-2.30,-0.54]	0.65	[-0.94,2.25]	-0.89**	[-1.68,-0.10]	-0.05	[-0.56,0.45]	-0.21	[-1.24,0.82]	-0.91	[-3.75,1.93]
Service: maternity care §	-0.92**	[-1.64,-0.21]	1.45**	[0.15,2.75]	-0.55*	[-1.20,0.10]	-0.41**	[-0.81,-0.02]	0.10	[-0.72,0.91]	-1.72	[-4.02,0.59]
Service: support & diagnostics §	-1.69**	[-3.34,-0.03]	-0.72	[-3.69,2.25]	-1.36*	[-2.81,0.10]	-0.89*	[-1.93,0.14]	-0.28	[-2.43,1.87]	3.69	[-1.65,9.03]
Service: specialty care §	-2.06***	[-2.94,-1.19]	0.73	[-0.86,2.32]	-1.60***	[-2.40,-0.81]	-0.76***	[-1.25,-0.27]	-0.53	[-1.55,0.49]	0.24	[-2.57,3.05]
Service: surgery care §	-1.53***	[-2.48,-0.58]	0.88	[-0.83,2.58]	-1.47***	[-2.33,-0.60]	-1.00***	[-1.52,-0.47]	-0.91*	[-1.97,0.16]	-1.00	[-4.04,2.04]
Smartphone experience score	0.06***	[0.03,0.09]	0.05*	[-0.01,0.11]	0.08***	[0.05,0.11]	0.03***	[0.01,0.05]	0.04**	[0.00,0.08]	-0.09	[-0.19,0.02]
History of MH counseling	0.64***	[0.42,0.86]	0.35*	[-0.05,0.76]	0.36***	[0.17,0.56]	-0.03	[-0.18,0.11]	-0.07	[-0.39,0.24]	0.27	[-0.46,0.99]
COVID-19 impact score	0.02	[-0.04,0.08]	0.20***	[0.09,0.31]	0.05*	[0.00,0.11]	0.01	[-0.02,0.05]	-0.13***	[-0.20,-0.06]	0.22**	[0.02,0.41]
COVID-19 ability to work impact	0.62***	[0.43,0.81]	0.95***	[0.61,1.29]	0.38***	[0.21,0.55]	0.16***	[0.05,0.27]	-0.24**	[-0.47,-0.01]	-0.10	[-0.71,0.50]
History of chat app use for MH	-0.02	[-0.17,0.13]	-0.24*	[-0.51,0.04]	-0.07	[-0.21,0.07]	-0.06	[-0.15,0.03]	0.28***	[0.10,0.46]	0.19	[-0.32,0.69]
History of website use for MH	0.20***	[0.05,0.35]	-0.07	[-0.34,0.20]	0.17**	[0.04,0.31]	0.05	[-0.03,0.14]	0.06	[-0.11,0.24]	0.30	[-0.19,0.78]

Independent variables	Dependent variables (mental health and resilience scores)					
	Depression (PHQ-9)	Burnout (OLBI)	Anxiety (GAD-7)	UCLA LONELINESS	Resilience building activities	Resilience (RS-14)
	Coefficient [CI]	Coefficient [CI]	Coefficient [CI]	Coefficient [CI]	Coefficient [CI]	Coefficient [CI]
Treatment group ¶	0.56*** [0.20,0.93]	0.43 [-0.23,1.09]	0.63*** [0.30,0.97]	0.61*** [0.34,0.87]	0.04 [-0.45,0.54]	-0.46 [-1.64,0.72]
Study period mid, end, post ≡	-0.60*** [-0.76,-0.43]	-0.95*** [-1.25,-0.65]	-0.80*** [-0.95,-0.65]	-0.27*** [-0.36,-0.17]	0.59*** [0.40,0.78]	1.63*** [1.09,2.17]

661 [CI]: [95% Confidence Interval]; P-values: \* ≤ 0.10, \*\* ≤ 0.05, \*\*\* ≤ 0.01, probability that coefficient values are 0 based on multivariable  
662 ordinary least squares regression  
663 z-score of time spent @ stands for standardized hours spent on Vitalk for the treatment group, and standardized number of days with web  
664 resources accessed for the control group  
665 Reference categories: † Cadre: nurse, ‡ Male, § Care level: primary, !! Facility type: public, ¯ Location: urban, § Service: outpatient care,  
666 ¶ Control group, ≡ Baseline  
667 Abbreviations: nfp = not-for-profit, fp = for profit, MH = mental health, mid = Midline, end = Endline, post = Post-endline period

668 Participants with a history of mental health counseling had higher levels of anxiety (0.36 points),  
669 depression (0.64 points), and burnout (0.35 points). The COVID-19 pandemic and its impact on work-  
670 related stress, workload, and working hours increased participants' anxiety by 0.05 points and burnout  
671 by 0.20 points. The coefficients for depression and loneliness also suggest a negative effect, but they  
672 were smaller and not statistically significant. While resilience levels increased by 0.22 points with the  
673 impact of COVID-19, resilience-building activities were affected negatively by -0.13 points. We observed  
674 a similar but stronger effect on participants' ability to work during the pandemic for all mental health  
675 outcomes and resilience-building activities, but not for resilience levels, ranging from 0.16 points for  
676 loneliness, to 0.95 points for burnout. Age and gender were significantly associated with both COVID-19  
677 related variables, but the effect was small (odds ratios close to 1). A history of using a chat app for  
678 mental health significantly increased resilience-building activities by 0.28 points. Participants who had  
679 previously accessed Internet resources for mental health saw significantly greater anxiety (0.17 points)  
680 and depression (0.20 points).

681 While there were differences in outcomes between control and treatment groups, only higher  
682 anxiety, depression, and loneliness were significantly associated with the treatment group. As expected  
683 from the DiD, effect size, and reliable change analyses, there was a significant relationship between  
684 study period and all mental wellbeing and resilience outcomes with strong gains post-intervention.

685 A similar ordinary least squares model for the treatment group regressed participant  
686 characteristics on mental health and resilience outcomes while controlling for study group and study  
687 period. Table 8 shows independent variables unique to the treatment group only. Mood scores were  
688 positively correlated with all mental health outcomes and resilience levels but not with resilience-  
689 building activities. A 1-point increase in mood status was associated with a -0.83 point decrease in  
690 anxiety, -0.71 point decrease in depression, -1.44 point decrease in burnout, -0.38 point decrease in  
691 loneliness, and 2.37 point increase in resilience. Specific carelines selected by participants had little  
692 impact on mental health or resilience outcomes, except when comparing the stress and COVID-19  
693 carelines to the anxiety careline. The stress careline was associated with significantly greater depression  
694 but lower burnout than the anxiety careline; there was no significant relationship between the stress  
695 careline and other outcomes. The COVID-19 careline was associated with lower mental wellbeing scores  
696 for all 4 assessments and higher resilience-building activities and resilience levels. However, these  
697 relationships only trended towards statistical significance at the 0.1 level for depression and loneliness.

698

699 Table 8. Additional determinants of mental health and resilience outcomes for the treatment group.

Independent variables	Dependent variables (mental health and resilience scores)											
	Depression (PHQ-9)		Burnout (OLBI)		Anxiety (GAD-7)		UCLA LONELINESS		Resilience building activities		Resilience (RS-14)	
	Coefficient [CI]		Coefficient [CI]		Coefficient [CI]		Coefficient [CI]		Coefficient [CI]		Coefficient [CI]	
Mood score	-0.71***	[-0.95,-0.47]	-1.44***	[-1.85,-1.03]	-0.83***	[-1.04,-0.61]	-0.38***	[-0.60,-0.17]	0.26	[-0.12,0.64]	2.37***	[1.59,3.16]
Careline: depression †	0.20	[-0.83,1.22]	-1.34	[-3.10,0.41]	-0.26	[-1.17,0.65]	-0.09	[-1.13,0.94]	-1.18*	[-2.56,0.20]	-3.17*	[-6.45,0.11]
Careline: stress †	1.06**	[0.21,1.92]	-1.79**	[-3.25,-0.34]	0.62	[-0.14,1.38]	-0.36	[-1.31,0.59]	-0.02	[-1.26,1.22]	-0.86	[-3.69,1.97]
Careline: relationships †	-0.32	[-1.16,0.51]	-1.03	[-2.50,0.44]	0.36	[-0.39,1.10]	-0.15	[-0.96,0.66]	-0.14	[-1.28,0.99]	-1.88	[-4.71,0.96]
Careline: COVID-19 †	-0.60*	[-1.28,0.09]	-0.82	[-2.00,0.36]	-0.21	[-0.83,0.40]	-0.60*	[-1.30,0.09]	0.40	[-0.70,1.50]	0.36	[-1.89,2.62]

700 P-values: \* ≤ 0.10, \*\* ≤ 0.05, \*\*\* ≤ 0.01

701 Reference category: † Careline: anxiety

## 702 **Participant experience**

703 At the end of the study, 820 participants completed an anonymous online participant  
704 experience questionnaire (37% from the control group and 63% from the treatment group). The gender  
705 distribution was the same (37% male and 63% female). Respondents were predominantly young (54% in  
706 the 18-to-29-year age group). Nurses made up the majority (68%). These respondent characteristics are  
707 similar to the attributes of the study population.

708 Fifty percent of participants from the treatment group reported using the app for more than 28  
709 days out of the total study period of 56 days (in line with an average of 24 days of use based on app  
710 data). When asked why the app was not used more frequently, the top 3 responses were: “I did not  
711 have the time to use the app” (45%); “The app took too long to work with” (30%); and “The app was too  
712 difficult to use” (13%). Overall, 91% of users found the app easy to use; 87% found the app content  
713 relevant; 92% derived benefits from the app; and 83% felt more resilient to everyday challenges.  
714 However, Vitalk users encountered several difficulties: 32% found the trial welcome email confusing;  
715 27% found it difficult to download and install the app; 20% found it difficult to sign into the app; 19%  
716 had difficulties entering the trial ID; 25% found getting to the mental health assessments confusing; and  
717 33% noted that the app took too long to work with. The top 3 likes of app use were: interactions with  
718 Viki (71%); the exercises (58%); and taking the mental wellbeing and resilience assessments (55%). The  
719 top three dislikes or challenges of app use were: exposure to new content every or every other day  
720 (36%); the mental health exercises (28%); and completing the mental health and resilience assessments  
721 (25%). The net promotor score (NPS) [40], was assessed by asking how likely users were on a scale from  
722 1 (not likely) to 10 (very likely) to recommend Vitalk to others. Sixty-six percent out of 515 respondents  
723 rated Vitalk a 9 or 10 (promoters), 23% a 7 or 8 (passives), and 11% a 6 or less (detractors). This resulted  
724 in a NPS – promoters minus detractors – of 55.

725 Fifty-two percent of participants from the control group reported using the Internet resources  
726 for more than 15 days out of the total study period of 56 days, a finding that is much higher than the  
727 one gleaned through web analytics (an average of less than 2 days accessing web resources). When  
728 asked why the Internet resources were not used more frequently the top 3 responses were: “I did not  
729 have the time to use the resources” (46%); “The resources took too long to work with” (34%); and “The  
730 content was too difficult to understand” (13%). Overall, 87% of users found the Internet resources easy  
731 to use; 92% found the resource content relevant; 95% derived benefits from the resources; and 87% felt  
732 more resilient to everyday challenges. However, Internet resource users encountered several  
733 difficulties: 17% found the trial welcome email confusing; 22% found it difficult to access the resources;  
734 11% found it difficult to get to the website; 7% had difficulties entering the trial ID; 11% found getting to  
735 the mental health assessments confusing; and 43% noted that the resources took too long to work with.  
736 The top three likes of web resource use were: taking the mental wellbeing and resilience assessments  
737 (61%); reading new content (55%); and the exercises (52%). The top three dislikes or challenges of  
738 resource use were: reading the website content (44%); finding new content by following links (36%); and  
739 doing mental health exercise (28%). Twenty-three percent found completing the mental health and  
740 resilience assessments challenging. When asked how likely users were on a scale from 1 (not likely) to 10  
741 (very likely) to recommend the Internet resources to others, 64% out of 305 respondents rated Internet  
742 resources a 9 or 10 (promoters), 23% a 7 or 8 (passives), and 13% a 6 or less (detractors). The resulting  
743 NPS of 51 is similar to the treatment group.



## 744 Discussion

745 Based on our literature review, this study is the first RCT of a mental health chat app for health  
746 workers combining multiple mental health and resilience outcomes. It was the first to include a  
747 measurement of resilience and to explore the potential of a mental health chat app to stimulate  
748 resilience-building activities among its users. The RCT took place in a low-resource setting in Southern  
749 Africa with very limited access to mental health counseling and therapy. The challenges that Malawi  
750 faces meeting population health needs have been further worsened by the COVID-19 pandemic.

751 The strengths of our RCT were the recruitment of more than 1,500 health professionals, and the  
752 management team's continuous encouragement of participants over the 8-week study period.  
753 Participants were successfully randomized into the 2 study arms while maintaining single blinding of the  
754 research team. The overall enrollment rate was 94%, with group-specific retention rates of 29%  
755 (treatment group) and 40% (control group) (see CONSORT diagram in Fig 1). The numerator for  
756 retention rates is the number of participants who completed base- and endline assessments for GAD-7,  
757 the denominator is the number of participants allocated to either the control or treatment group.  
758 Compared to other much smaller RCTs of i-CBT, retention rates were high due to weekly reminders  
759 through WhatsApp and email messages, as well as instant support of users meeting issues during  
760 registration, sign in or app use. A trial of adolescents with self-identified anxiety concern (with fewer  
761 than 50 participants per group) reported 8-week retention rates of 28% (treatment group) and 58%  
762 (control group) [41]. An RCT of i-CBT of participants with depression and anxiety symptoms referred to  
763 care (substantially different from our study population) reported much higher 8-week retention rates of  
764 82% (treatment group) and 72% (control group) [42].

765 The results from the DiD estimators obtained from mixed linear effect modeling support our  
766 working hypothesis that use of a chatbot such as Vitalk can effectively improve mental health and  
767 resilience outcomes among health professionals in Malawi. The coefficient for the interaction terms  
768 between study group and assessment period varied between -0.68 for depression, -0.58 for burnout, -  
769 0.44 for anxiety, 1.22 for resilience building activities, and 1.47 for resilience levels, indicating that active  
770 engagement with the app was more effective in improving mental wellbeing (except loneliness) and  
771 increasing health worker resilience compared to the passive offering of Internet resources. We are  
772 assured that Vitalk app use causes greater improvements in mental wellbeing and resilience than the  
773 alternative due to the experimental study design and the size of the DiD estimators and confidence  
774 intervals (most do not include zero or absence of a treatment effect). It should be noted that such a  
775 strong treatment effect was observed despite considerable technical issues faced by Vitalk users. These  
776 challenges likely moderated the effect size as indicated by the disproportionate attrition in the  
777 treatment group and the feedback from the anonymous user experience survey, suggesting that this  
778 was a very realistic trial of a constantly evolving innovative mobile technology.

779 Based on DiD estimators, Vitalk use did not appear to be associated with changes in loneliness.  
780 Possible reasons include: a small effective sample for the treatment group ( $n = 70$ ); a coarse 3-question  
781 instrument that may not be sufficiently sensitive for measuring the effect of Vitalk's relationship  
782 careline; or app use in general. Although we explored behavioral theory about loneliness, we could not  
783 find any studies that examined whether i-CBT or chatbot use influenced social isolation. However, a

784 recent meta-analysis by Bryan et al. found that workplace loneliness was significantly associated with  
785 burnout and other health and personal factors [43].

786 Our findings add substantial evidence to existing research. Unlike other published studies, we  
787 tested the effectiveness of Vitalk by implementing a large RCT in a LMIC context where access to mental  
788 wellbeing and resilience support is extremely limited. Compared to our sample sizes of 200 participants  
789 or more per study arm for most of our outcome measures, the other existing RCTs tend to suffer from  
790 very small samples of about 30 individuals or fewer. Our RCT is also the first of its kind to be applied to  
791 the health workforce, which during normal times is at very high risk for work-related stress and burnout,  
792 but even more so during the COVID-19 pandemic. In addition to mental wellbeing outcomes, our study  
793 not only measured levels of resilience but also resilience-building activities by participants. We were not  
794 able to find studies that looked at resilience as an outcome to compare them to our findings.

795 While both study groups experienced improvements in mental wellbeing and resilience between  
796 baseline and endline, the effect size was consistently larger for the treatment than for the control group,  
797 further supporting our working hypothesis that Vitalk is more effective in improving mental health and  
798 resilience outcomes than passive Internet resources. While we were not able to compare our DiD results  
799 to the published literature, we can compare the effect size, which is commonly reported for RCTs. Our  
800 findings suggest an approximately medium effect size, varying between  $d = -0.36$  to  $-0.52$  for mental  
801 health, and  $d = 0.42$  to  $0.78$  for resilience, which is similar to reported literature on the effectiveness of  
802 c-CBT of depression and anxiety based on 24 RCTs with sample sizes between 19 and 257 adolescents  
803 and young adults with symptoms of anxiety or depression [11]. However, it is smaller than an average  
804 effect size of  $g = 0.77$  (95% CI 0.59–0.95) reported from a meta-analysis of 49 RCTs [9]. An RCT ( $n = 56$ )  
805 on the use of Woebot (a chatbot) to deliver CBT to young adults with depression and anxiety reported a  
806 significant reduction of both outcomes with an effect size of  $d = 0.44$  and  $0.37$ , respectively [44]. An RCT  
807 of the use of the Vivibot chatbot ( $n = 45$ ) by young people with cancer found a significant interaction  
808 effect between time and study group of  $-0.41$  for reducing anxiety, but no effect on depression [45]. A  
809 review of 12 papers cited weak evidence of the ability of chatbots to reduce depression, with an effect  
810 size of  $-0.55$  (95% CI  $-0.87$  to  $-0.23$ ), which is very similar to our result, but reported outcomes for  
811 anxiety contradicting our findings [19]. Effect size may be influenced by the characteristics of the study  
812 population. While our study targeted healthy healthcare workers, other studies enrolled participants  
813 with predetermined mental health issues or underlying illnesses. The fact that healthcare workers have  
814 self-selected to cope with stressful situations compared to participants from the general population, or  
815 those clinically diagnosed with symptoms, may explain some of the discrepancies in effect size.

816 Nonexperimental studies showed a greater effect size than RCTs. An earlier effectiveness study  
817 of self-selected Vitalk users from the general population reported a large effect size of  $d = 0.81$  and  
818 greater for mental health outcomes [16]. Another uncontrolled trial of clients with severe symptoms of  
819 depression and anxiety reported much higher scores for depression and anxiety (based on PHQ-9 and  
820 GAD-7 assessments) than our study, as well as effect sizes ranging from  $d = 0.61$  to  $0.83$  [46].

821 The LMIC setting of our RCT may account for a smaller effect size than anticipated compared to  
822 results from studies in middle- and high-income countries. Limited and expensive access to mobile  
823 phones in Malawi offers less opportunity for self-help and other innovative app use among the  
824 population, which may have constrained participants' ability to benefit from the full potential of a

825 mental health chatbot. This is supported by the fact that a high proportion of participants reported that  
826 they did not have the time to use the app or Internet resources (1 in 5) or found that it took too long to  
827 work with them (1 in 3). This could also imply that participants tried to conserve precious airtime. Large  
828 differences in mean scores between our study and others suggest that culture may also play an  
829 important role in shaping how participants respond to mental health and resilience questionnaires [47,  
830 48]. For example, our RCT in Malawi reported mean anxiety scores (4.5 at baseline and 2.9 at endline)  
831 and depression scores (4.0/2.9) that were less than half of those found in Brazil (pre-/post-app use  
832 means of 12.2/8.1 for anxiety, and 15.9/10.4 for depression) [16].

833 Many of the improvements in mental health and resiliency scores documented in our study are  
834 of statistical and clinical relevance and are welcome outcomes. Changes in risk levels were based on RCIs  
835 of 4 for the GAD-7 (anxiety) and PHQ-9 (depression) calculated from our sample. These are similar to or  
836 lower than those reported by other studies (e.g., an RCI of 6 for PHQ-9 and an RCI of 4 for GAD-7 [46],  
837 and an RCI of 6 for GAD-7 [49]). Based on our RCIs, we estimate that about one- to two-thirds of the  
838 improvements in both study groups were reliable (see Fig 9). Applying the RCI, we saw reliable  
839 improvements for depression of 14% (control group) and 17% (treatment group); and improvements in  
840 anxiety of about 25% (both groups). This is considerably lower than the reliable change in clinical  
841 caseness reported by other studies (e.g., 52% for anxiety and 45% for depression [16] and between 58%  
842 and 70% across assessments [46]). These discrepancies are likely due to differences in study populations  
843 (randomly selected health workers versus self-selected general population), with much lower mean  
844 scores for our participants, and a small proportion classified at moderate or severe risk levels of about  
845 13% at baseline and 8% at endline for depression and anxiety, respectively. A small proportion (0% to  
846 7%) of participants saw a reliable worsening of mental health and resilience scores; the effect was  
847 consistently higher in the control group. This decline is in line with about 2% to 5% reported by Daley et  
848 al. [16].

849 While controlling for trial group affiliation and study period, our analysis explored which user or  
850 engagement characteristics most significantly explained the outcomes of interest. Although these  
851 factors may vary by country context, they must be considered when planning mental health support  
852 strategies and helping health workers increase their resilience to meet everyday challenges.  
853 Engagement with the app or the website, measured as z-scores of time spent, was strongly correlated  
854 with reduced anxiety, depression, burnout, and loneliness. Gan et al. [50] also found a significant  
855 association between engagement in digital mental health interventions and mental health  
856 improvements. A systematic review by Molly and Anderson [51] identified several studies that showed  
857 statistically significant associations between engagement and clinical improvement. Our data did not  
858 indicate that time was a determinant of resilience or resilience-building activities.

859 Our study identified a need for user interface and app processes to be designed for people with  
860 less experience using smartphones and online resources and with a higher risk of adverse mental health  
861 outcomes. In our study, we found that older and female participants tended to have greater anxiety,  
862 depression, loneliness (age only), and burnout (gender only), as well as less experience with smartphone  
863 and Internet use. In a study of the health workforce in Jordan, age and gender were associated with  
864 worse mental health outcomes for males [52]. A rapid scoping review of occupational stress, burnout,  
865 and depression in women in healthcare during the COVID-19 pandemic showed that female health  
866 workers were at increased risk [53].

867 Compared to those working in other types of medical and ancillary services, levels of anxiety and  
868 depression appear to be highest among our participants working in outpatient care, a service in which  
869 healthcare workers may be required to pay special attention to mental health support, but, according to  
870 anonymous user feedback, they may also face the greatest time constraints for accessing online mental  
871 health solutions. Participants working in secondary and tertiary care institutions were at higher risk for  
872 anxiety, depression, and burnout compared to those in primary care, a finding similar to a study in Peru  
873 [54]. In our study, we found that public facilities were associated with greater mental health risks than  
874 private, not-for-profit facilities. Public facilities may be able to draw upon the strategies used by private  
875 facilities to reduce anxiety and depression. However, the public sector in Malawi seems better equipped  
876 to build health worker resilience compared to the private sector. Work location (urban versus rural), was  
877 not significantly associated with the outcomes (at the 95% level).

878 Our findings that current or past exposure to mental health counseling was associated with  
879 greater anxiety, depression and burnout confirmed those of Varma et al. [55]. Our participants saw a  
880 negative impact of the COVID-19 pandemic across all outcomes (except for resilience scores), similarly  
881 to findings from a study in Jordan [52]. A study of healthcare and allied workers involved in the COVID-  
882 19 pandemic from India found high levels of severe and extremely severe anxiety (23.2%) and severe  
883 and extremely severe depression (11.4%)[56]. The level of severe anxiety was almost double that found  
884 in our study (which did not focus on workers involved in the pandemic). The levels of severe depression  
885 were similar to our findings. Although the Vitalk app demonstrated no effect on loneliness, the  
886 pandemic itself had a negative impact on loneliness overall. This could be expected based on the results  
887 of a meta-analysis reporting a small but significant effect size of  $g = 0.27$  of the COVID-19 pandemic on  
888 loneliness [57].

## 889 Limitations

890 Our study had several limitations. Due to technical issues with the app, the response rate for the  
891 treatment group was substantially lower than for the control group. The attrition rate was greater for  
892 the loneliness and resilience-building activity assessments, reducing the power of our statistical analysis.  
893 Engagement with the app was an average of 11 minutes per day, including the completion of  
894 assessments, and was within a range of 4 to 22 minutes (median) reported by a study of user  
895 engagement with mental health apps [58]. The RCT provided participants with airtime to use Vitalk or to  
896 peruse the web resources on their mobile phones, which no doubt incentivized app use. However, this  
897 did not constitute a bias, because it affected both study groups equally. The financial support allowed us  
898 to test a mental wellbeing digital intervention in a resource-poor environment in anticipation of a future  
899 rapid increase of affordable cellular data access in sub-Saharan Africa. Our study was not representative  
900 of the entire health workforce in Malawi, because the interventions required English language  
901 proficiency and smartphone ownership, limiting the study to those with a diploma or at least 2 years of  
902 college education. Moreover, participants were predominantly from 2 urban districts within major  
903 population centers and only 18% from rural health facilities. Given that the classification of mental  
904 health and resilience relied entirely on self-assessments, which can be influenced by sociocultural  
905 factors unique to a country or study population, this phenomenon must be considered when comparing  
906 our findings to those of other studies.

907 As indicated by NPS scores, user satisfaction with Vitalk and web resources was high in the  
908 treatment (NPS of 55) and control (NPS of 51) groups. While we did not find NPS benchmarks for chat  
909 apps or i-CBT, a study by Marler [59] compared the NPS in an RCT of 2 smoking cessation apps and  
910 found values ranging between 1 (control app) and 57 (intervention app). A study of community mental  
911 health services found an NPS of 19, which varied considerably by respondent characteristics (from 10 for  
912 older, to 37 for younger patients) [29]. Nonetheless, given the limitations of validity and reliability of  
913 single item measurements such as the NPS [60], the magnitude of the NPS and difference between  
914 groups should be viewed with caution. Moreover, apps such as Vitalk are constantly updated and  
915 enhanced as the technology matures. During the RCT in Malawi, a newer Vitalk version with advanced  
916 artificial intelligence and natural language processing features offering a potentially better user  
917 experience was already under development in Brazil.

## 918 **Conclusions**

919 Given Vitalk's demonstrably positive effect on mental wellbeing and resilience, it has exciting  
920 potential to be an effective tool in the arsenal of interventions to reduce work-related stress and  
921 burnout. Based on our completion rate (1 in 3 study participants), there appears to be substantial  
922 demand for such an app and willingness to engage with it for at least 10 minutes daily, a length of time  
923 that seems adequate for most users to improve mental wellbeing and resilience, in addition to extra  
924 time for occasional assessments. User feedback suggests that several factors encourage chatbot use  
925 including natural interaction with the app; frequently updated content and exercises; and carelines  
926 adapted to 2 diverse types of users – those needing more general psychosocial support and those facing  
927 more pronounced mental health issues. Users indicated that they enjoyed the interaction with the  
928 virtual assistant, Viki, and appreciated the assessments on mental wellbeing and resilience as important  
929 benchmarks.

930 To mitigate the technical difficulties encountered meticulous planning of the app rollout is  
931 critical. This includes ensuring local access to an app that was developed for a different region (Brazil)  
932 and not underestimating the amount of handholding necessary to install the app on smartphones for a  
933 study population that is not a frequent user of mobile apps because of costs. Our study management  
934 team spent considerable effort supporting users online, through WhatsApp groups, and individual email  
935 support. Making the assessments less tedious and more entertaining is an ongoing challenge for app  
936 developers. The addition of elements to a life app, user identification and 2 assessments in our case,  
937 requires sufficient lead time to ensure smooth operation. Factors to consider but are beyond the  
938 influence of the study included intermittent internet access, which affected both study groups equally  
939 and limited smartphone app use experience which affected the treatment group more than the control  
940 group. App developers should weigh the advantages and disadvantages of changing the clinical risk  
941 classifications based on standardized mental health and resilience assessments from their original to  
942 fixed groupings, even if this makes sense from a user-friendliness perspective.

943 Vitalk was developed in Brazil and was translated from Portuguese into English and adapted to  
944 the African context to resonate with Malawian users. While it would be cost effective to make future  
945 version available more widely globally, African countries could take ownership and create an app that is  
946 well adapted to the African context by developing their own Vitalk version through a collaborative effort  
947 to make the most efficient use of their resources. These resources include not only app developers,

948 which are widely available in Africa, but also psychologists and mental health therapists to develop and  
949 validate the app content.

950 While apps such as Vitalk can help health professionals cope with daily stressors and improve  
951 mental wellbeing, employers need to create less stressful work environments to maximize their  
952 effectiveness. Proven interventions to strengthen health systems function and to increase healthcare  
953 provider satisfaction include ensuring: essential supplies and equipment; an infrastructure that meets  
954 the needs of patients and staff; and adequate and well-trained human resources for health. As Internet  
955 access through mobile devices becomes more widespread and affordable in LMICs, employers in the  
956 public and private sector should consider providing free app subscriptions to their employees,  
957 organizing group sessions for mental wellbeing exercises, and encouraging app use.

958 Similarly to other studies, our RCT confirmed that mobile chat apps are one effective tool for  
959 improving mental wellbeing and resilience among its target audience. For the first time, our findings  
960 show that apps such as Vitalk can support the mental wellbeing and resilience of health workers to meet  
961 the challenges unique to their profession, especially in a resource poor environment where access to  
962 mental health services is very limited. Countries employ thousands of health workers, and many need  
963 support: as many as 1 in 8 health workers in our RCT needed help with anxiety or depression; 3 in 4  
964 faced some degree of burnout; and 1 in 4 had low resilience. As countries struggle to increase access to  
965 mental health professionals, apps such as Vitalk have potential to fill the gaps in support. While the  
966 study took place during the COVID-19 pandemic, which was not foreseen when we planned the study, it  
967 provides a long-term solution for a workforce exposed to a high-pressure environment during normal  
968 times and especially during regularly occurring emergency situations. In the aftermath of the ongoing  
969 COVID-19 pandemic, healthcare providers in the public and private sectors should consider offering  
970 access to mental wellbeing apps to all their employees to cope with everyday challenges and to prepare  
971 for future public health emergencies.

## 972 **Acknowledgments**

973 The authors would like to thank the management and health professionals from health centers  
974 and hospitals in Malawi for their support and participation in this study. We gratefully acknowledge  
975 Elizabeth Leitman (Chemonics International) for editing the manuscript.

## 976 **Author contributions**

977 Study design (EK, TL, WJ), Data collection and analysis (TL, EK, KG, DR, DK, LM, EJ, AZ), Vitalk app  
978 and website support (IH, MN, RM, YK, MK), Decision to Publish (EK, TL), Preparation of the manuscript  
979 (EK, TL, WJ). EK, TL and all other coauthors have no competing interests. This does not alter our  
980 adherence to PLOS ONE policies on sharing data and materials.

## 981 **Data Availability Statement**

982 A minimal anonymized data set necessary to replicate the study finding is included as  
983 Supporting Information.

## 984 **Disclaimer**

985 The views and opinions expressed in this paper are those of the authors and not necessarily the  
986 views and opinions of the United States Agency for International Development.

## 987 **S1 – Supplemental Information: Questionnaires (Word)**

## 988 **S2 – Supplemental Information: Codebook and Deidentified**

## 989 **Dataset (Excel)**

## 990 **References**

- 991 1. Sovold LE, Naslund JA, Kousoulis AA, Saxena S, Qoronfleh MW, Grobler C, Munter L. Prioritizing  
992 the Mental Health and Well-Being of Healthcare Workers: An Urgent Global Public Health Priority. *Front*  
993 *Public Health*. 2021;9:679397.
- 994 2. Muller AE, Hafstad EV, Himmels JPW, Smedslund G, Flottorp S, Stensland SO, et al. The mental  
995 health impact of the covid-19 pandemic on healthcare workers, and interventions to help them: A rapid  
996 systematic review. *Psychiatry Res*. 2020;293:113441.
- 997 3. Nochaiwong S, Ruengorn C, Thavorn K, Hutton B, Awiphan R, Phosuya C, et al. Global prevalence  
998 of mental health issues among the general population during the coronavirus disease-2019 pandemic: a  
999 systematic review and meta-analysis. *Sci Rep*. 2021;11(1):10173.
- 1000 4. Ofori AA, Osarfo J, Agbeno EK, Manu DO, Amoah E. Psychological impact of COVID-19 on health  
1001 workers in Ghana: A multicentre, cross-sectional study. *SAGE Open Med*. 2021;9:20503121211000919.
- 1002 5. Mulatu HA, Tesfaye M, Woldeyes E, Bayisa T, Fisseha H, Kassu RA. The prevalence of common  
1003 mental disorders among healthcare professionals during the COVID-19 pandemic at a tertiary Hospital in  
1004 Addis Ababa, Ethiopia. *J Affect Disord Rep*. 2021;6:100246.
- 1005 6. Msomi N. SA healthcare workers been experiencing burnout long before Covid-19 pandemic:  
1006 *News24, health 24*; 2021 [Available from: [https://www.news24.com/health24/mental-health/mental-](https://www.news24.com/health24/mental-health/mental-health-in-sa/sa-healthcare-workers-been-experiencing-burnout-long-before-covid-19-pandemic-20210318-2)  
1007 [health-in-sa/sa-healthcare-workers-been-experiencing-burnout-long-before-covid-19-pandemic-](https://www.news24.com/health24/mental-health/mental-health-in-sa/sa-healthcare-workers-been-experiencing-burnout-long-before-covid-19-pandemic-20210318-2)  
1008 [20210318-2](https://www.news24.com/health24/mental-health/mental-health-in-sa/sa-healthcare-workers-been-experiencing-burnout-long-before-covid-19-pandemic-20210318-2).
- 1009 7. Chorwe-Sungani G. Assessing COVID-19-related anxiety and functional impairment amongst  
1010 nurses in Malawi. *Afr J Prim Health Care Fam Med*. 2021;13(1):e1-e6.
- 1011 8. Chisholm D, Sweeny K, Sheehan P, Rasmussen B, Smit F, Cuijpers P, Saxena S. Scaling-up  
1012 treatment of depression and anxiety: a global return on investment analysis. *Lancet Psychiatry*.  
1013 2016;3(5):415-24.
- 1014 9. Grist R, Cavanagh K. Computerised Cognitive Behavioural Therapy for Common Mental Health  
1015 Disorders, What Works, for Whom Under What Circumstances? A Systematic Review and Meta-analysis.  
1016 *Journal of Contemporary Psychotherapy*. 2013;43:243-51.
- 1017 10. Andrews G, Cuijpers P, Craske MG, McEvoy P, Titov N. Computer therapy for the anxiety and  
1018 depressive disorders is effective, acceptable and practical health care: a meta-analysis. *PLoS One*.  
1019 2010;5(10):e13196.
- 1020 11. Christ C, Schouten MJ, Blankers M, van Schaik DJ, Beekman AT, Wisman MA, et al. Internet and  
1021 Computer-Based Cognitive Behavioral Therapy for Anxiety and Depression in Adolescents and Young  
1022 Adults: Systematic Review and Meta-Analysis. *J Med Internet Res*. 2020;22(9):e17831.
- 1023 12. Watts S, Mackenzie A, Thomas C, Griskaitis A, Mewton L, Williams A, Andrews G. CBT for  
1024 depression: a pilot RCT comparing mobile phone vs. computer. *BMC Psychiatry*. 2013;13:49.
- 1025 13. Kristjansdottir OB, Fors EA, Eide E, Finset A, Stensrud TL, van Dulmen S, et al. A smartphone-  
1026 based intervention with diaries and therapist-feedback to reduce catastrophizing and increase

- 1027 functioning in women with chronic widespread pain: randomized controlled trial. *J Med Internet Res.*  
1028 2013;15(1):e5.
- 1029 14. Dagoo J, Asplund RP, Bsenko HA, Hjerling S, Holmberg A, Westh S, et al. Cognitive behavior  
1030 therapy versus interpersonal psychotherapy for social anxiety disorder delivered via smartphone and  
1031 computer: a randomized controlled trial. *J Anxiety Disord.* 2014;28(4):410-7.
- 1032 15. Bakker D, Kazantzis N, Rickwood D, Rickard N. Mental Health Smartphone Apps: Review and  
1033 Evidence-Based Recommendations for Future Developments. *JMIR Ment Health.* 2016;3(1):e7.
- 1034 16. Daley K, Hungerbuehler I, Cavanagh K, Claro HG, Swinton PA, Kapps M. Preliminary Evaluation of  
1035 the Engagement and Effectiveness of a Mental Health Chatbot. *Front Digit Health.* 2020;2:576361.
- 1036 17. Mental health atlas 2017. World Health Organization; 2018.
- 1037 18. Kauye F. Management of mental health services in Malawi. *Int Psychiatry.* 2008;5(2):29-30.
- 1038 19. Abd-Alrazaq AA, Rababeh A, Alajlani M, Bewick BM, Househ M. Effectiveness and Safety of Using  
1039 Chatbots to Improve Mental Health: Systematic Review and Meta-Analysis. *J Med Internet Res.*  
1040 2020;22(7):e16021.
- 1041 20. Dallal GE. Randomization plan generator 2020 [Available from:  
1042 <http://www.jerrydallal.com/random/randomize.htm>.
- 1043 21. Research Randomizer: Social Psychology Network; 2021 [Available from:  
1044 <https://www.randomizer.org/>.
- 1045 22. Seligman MEP, editor Building Human Strength: Psychology's Forgotten Mission 2006.
- 1046 23. Beck JS, Beck AT. Cognitive Behavior Therapy, Second Edition: Basics and Beyond: Guilford  
1047 Publications; 2011.
- 1048 24. Yoo B-k, Rayz JT. Understanding Emojis for Sentiment Analysis. The International FLAIRS  
1049 Conference Proceedings. 2021.
- 1050 25. Looking after our mental health: Mental Health Foundation (MHF); 2021 [Available from:  
1051 <https://www.mentalhealth.org.uk/publications/how-to-mental-health>.
- 1052 26. Mental well-being: resources for the public: World Health Organization; 2021 [Available from:  
1053 <https://www.who.int/news-room/feature-stories/mental-well-being-resources-for-the-public>.
- 1054 27. #HealthyAtHome - Mental health: World Health Organization; 2020 [Available from:  
1055 [https://www.who.int/campaigns/connecting-the-world-to-combat-](https://www.who.int/campaigns/connecting-the-world-to-combat-coronavirus/healthyathome/healthyathome---mental-health)  
1056 [coronavirus/healthyathome/healthyathome---mental-health](https://www.who.int/campaigns/connecting-the-world-to-combat-coronavirus/healthyathome/healthyathome---mental-health).
- 1057 28. Doing what matters in times of stress: an illustrated guide. Geneva: World Health Organization;  
1058 2020.
- 1059 29. Wilberforce M, Poll S, Langham H, Worden A, Challis D. Measuring the patient experience in  
1060 community mental health services for older people: A study of the Net Promoter Score using the Friends  
1061 and Family Test in England. *Int J Geriatr Psychiatry.* 2019;34(1):31-7.
- 1062 30. Demerouti E, Bakker AB. The Oldenburg Burnout Inventory: A good alternative to measure  
1063 burnout and engagement. Halbesleben JRB, editor. Hauppauge, NY: Nova Science Pub Inc.; 2008.
- 1064 31. Kaggwa MM, Kajjimu J, Sserunkuma J, Najjuka SM, Atim LM, Olum R, et al. Prevalence of  
1065 burnout among university students in low- and middle-income countries: A systematic review and meta-  
1066 analysis. *PLoS One.* 2021;16(8):e0256402.
- 1067 32. Mughal AY, Devadas J, Ardman E, Levis B, Go VF, Gaynes BN. A systematic review of validated  
1068 screening tools for anxiety disorders and PTSD in low to middle income countries. *BMC Psychiatry.*  
1069 2020;20(1):338.
- 1070 33. Steptoe A, Shankar A, Demakakos P, Wardle J. Social isolation, loneliness, and all-cause mortality  
1071 in older men and women. *Proc Natl Acad Sci U S A.* 2013;110(15):5797-801.
- 1072 34. Hughes ME, Waite LJ, Hawkey LC, Cacioppo JT. A Short Scale for Measuring Loneliness in Large  
1073 Surveys: Results From Two Population-Based Studies. *Res Aging.* 2004;26(6):655-72.



- 1074 35. Building Health Worker Resilience: A Toolkit to Protect Against Burnout on the Front Lines. New  
1075 Brunswick, New Jersey, USA: Center for Health Worker Innovation; 2021.
- 1076 36. Wagnild G. The Resilience Scale user's guide for the US English version of the Resilience Scale  
1077 and the 14-item Resilience Scale (RS-14). Worden, MT: Resilience Center; 2009.
- 1078 37. Wagnild G. A review of the Resilience Scale. *J Nurs Meas*. 2009;17(2):105-13.
- 1079 38. Siriwardhana C, Abas M, Siribaddana S, Sumathipala A, Stewart R. Dynamics of resilience in  
1080 forced migration: a 1-year follow-up study of longitudinal associations with mental health in a conflict-  
1081 affected, ethnic Muslim population. *BMJ Open*. 2015;5(2):e006000.
- 1082 39. Stahl K, Adorjan K, Anderson-Schmidt H, Budde M, Comes AL, Gade K, et al. Stability over time of  
1083 scores on psychiatric rating scales, questionnaires and cognitive tests in healthy controls. *BJPsych Open*.  
1084 2022;8(2):e55.
- 1085 40. Reichheld FF. The one number you need to grow. *Harv Bus Rev*. 2003;81(12):46-54, 124.
- 1086 41. O'Connor K, Bagnell A, McGrath P, Wozney L, Radomski A, Rosychuk RJ, et al. An Internet-Based  
1087 Cognitive Behavioral Program for Adolescents With Anxiety: Pilot Randomized Controlled Trial. *JMIR*  
1088 *Ment Health*. 2020;7(7):e13356.
- 1089 42. Richards D, Enrique A, Eilert N, Franklin M, Palacios J, Duffy D, et al. A pragmatic randomized  
1090 waitlist-controlled effectiveness and cost-effectiveness trial of digital interventions for depression and  
1091 anxiety. *NPJ Digit Med*. 2020;3:85.
- 1092 43. Bryan BT, Andrews G, Thompson KN, Qualter P, Matthews T, Arseneault L. Loneliness in the  
1093 workplace: a mixed-method systematic review and meta-analysis. *Occup Med (Lond)*. 2023;73(9):557-  
1094 67.
- 1095 44. Fitzpatrick KK, Darcy A, Vierhile M. Delivering Cognitive Behavior Therapy to Young Adults With  
1096 Symptoms of Depression and Anxiety Using a Fully Automated Conversational Agent (Woebot): A  
1097 Randomized Controlled Trial. *JMIR Ment Health*. 2017;4(2):e19.
- 1098 45. Greer S, Ramo D, Chang YJ, Fu M, Moskowitz J, Haritatos J. Use of the Chatbot "Vivibot" to  
1099 Deliver Positive Psychology Skills and Promote Well-Being Among Young People After Cancer Treatment:  
1100 Randomized Controlled Feasibility Trial. *JMIR Mhealth Uhealth*. 2019;7(10):e15018.
- 1101 46. Duffy D, Enrique A, Connell S, Connolly C, Richards D. Internet-Delivered Cognitive Behavior  
1102 Therapy as a Prequel to Face-To-Face Therapy for Depression and Anxiety: A Naturalistic Observation.  
1103 *Front Psychiatry*. 2019;10:902.
- 1104 47. Parkerson HA, Thibodeau MA, Brandt CP, Zvolensky MJ, Asmundson GJ. Cultural-based biases of  
1105 the GAD-7. *J Anxiety Disord*. 2015;31:38-42.
- 1106 48. Harry ML, Coley RY, Waring SC, Simon GE. Evaluating the Cross-Cultural Measurement  
1107 Invariance of the PHQ-9 between American Indian/Alaska Native Adults and Diverse Racial and Ethnic  
1108 Groups. *J Affect Disord Rep*. 2021;4.
- 1109 49. Bischoff T, Anderson SR, Heafner J, Tambling R. Establishment of a reliable change index for the  
1110 GAD-7. *Psychology, community & health*. 2020;8:176-87.
- 1111 50. Gan DZQ, McGillivray L, Han J, Christensen H, Torok M. Effect of Engagement With Digital  
1112 Interventions on Mental Health Outcomes: A Systematic Review and Meta-Analysis. *Front Digit Health*.  
1113 2021;3:764079.
- 1114 51. Molloy A, Anderson PL. Engagement with mobile health interventions for depression: A  
1115 systematic review. *Internet Interv*. 2021;26:100454.
- 1116 52. Alnazly E, Khraisat OM, Al-Bashaireh AM, Bryant CL. Anxiety, depression, stress, fear and social  
1117 support during COVID-19 pandemic among Jordanian healthcare workers. *PLoS One*.  
1118 2021;16(3):e0247679.
- 1119 53. Sriharan A, Ratnapalan S, Tricco AC, Lupea D, Ayala AP, Pang H, Lee DD. Occupational Stress,  
1120 Burnout, and Depression in Women in Healthcare During COVID-19 Pandemic: Rapid Scoping Review.  
1121 *Front Glob Womens Health*. 2020;1:596690.

- 1122 54. Quispe-Sancho A, Chambi-Macedo KL, Laurel-Vargas V, Huamani-Merma E, Cuzcano-Gonzales  
1123 KV, Huaita-Rocha MA, al. e. Depression, Anxiety, and Stress in Health Professionals Working During the  
1124 COVID-19 Pandemic in Peru: An Analytical Cross-Sectional Study. *ELECTRON J GEN MED*. 2021;18(6).  
1125 55. Varma P, Junge M, Meaklim H, Jackson ML. Younger people are more vulnerable to stress,  
1126 anxiety and depression during COVID-19 pandemic: A global cross-sectional survey. *Prog*  
1127 *Neuropsychopharmacol Biol Psychiatry*. 2021;109:110236.  
1128 56. Shekhar S, Ahmad S, Ranjan A, Pandey S, Ayub A, Kumar P. Assessment of depression, anxiety  
1129 and stress experienced by health care and allied workers involved in SARS-CoV2 pandemic. *J Family Med*  
1130 *Prim Care*. 2022;11(2):466-71.  
1131 57. Ernst M, Niederer D, Werner AM, Czaja SJ, Mikton C, Ong AD, et al. Loneliness before and during  
1132 the COVID-19 pandemic: A systematic review with meta-analysis. *Am Psychol*. 2022;77(5):660-77.  
1133 58. Baumel A, Muench F, Edan S, Kane JM. Objective User Engagement With Mental Health Apps:  
1134 Systematic Search and Panel-Based Usage Analysis. *J Med Internet Res*. 2019;21(9):e14567.  
1135 59. Marler JD, Fujii CA, Utlely MT, Balbierz DJ, Galanko JA, Utlely DS. Outcomes of a Comprehensive  
1136 Mobile Smoking Cessation Program With Nicotine Replacement Therapy in Adult Smokers: Pilot  
1137 Randomized Controlled Trial. *JMIR Mhealth Uhealth*. 2022;10(11):e41658.  
1138 60. Adams C, Walpola R, Schembri AM, Harrison R. The ultimate question? Evaluating the use of Net  
1139 Promoter Score in healthcare: A systematic review. *Health Expect*. 2022;25(5):2328-39.
- 1140