

## Changes in rest-activity rhythms in adolescents as they age: associations with brain changes and behavior in the ABCD study

Rui Zhang<sup>a,\*</sup>, Melanie Schwandt<sup>a</sup>, Leah Vines<sup>a</sup>, Nora D. Volkow<sup>a,b,\*</sup>

<sup>a</sup> *National Institute on Alcohol Abuse and Alcoholism, Laboratory of Neuroimaging, National Institutes of Health, Bethesda, MD 20892-1013, USA*

<sup>b</sup> *National Institute on Drug Abuse, National Institutes of Health, Bethesda, MD 20892-1013, USA*

### \*Corresponding authors

Rui Zhang

[ruizhang@nih.gov](mailto:ruizhang@nih.gov)

phone: +1(301) 402-5861

Nora D. Volkow

[nvolkow@nida.nih.gov](mailto:nvolkow@nida.nih.gov)

Laboratory of Neuroimaging

National Institute on Alcohol Abuse and Alcoholism

National Institutes of Health

10 Center Drive, Room B2L124: MSC 1013

Bethesda, MD 20892-1013, USA

## **ABSTRACT**

### **Background**

Adolescents with disrupted rest-activity rhythm (RAR) including shorter sleep duration, later sleep timing and low physical activity levels have higher risk for mental and behavioral problems. However, it remains unclear whether the same associations can be observed for within-subject changes in RAR.

### **Methods**

Our longitudinal investigation on RAR used Fitbit data from the Adolescent Brain Cognitive Development (ABCD) Study at the 2-year (FL2: aged 10-13 years) and 4-year follow-up (FL4: aged 13-16 years). 963 youths had good-quality Fitbit data at both time points. In this study we examined changes in RAR from FL2 to FL4, their environmental and demographic contributors as well as brain and behavioral correlates.

### **Results**

From FL2 to FL4, adolescents showed decreases in sleep duration and physical activity as well as delayed sleep timing (Cohen's  $d$  .44-.75). The contributions of environmental and demographic factors to RAR changes were greatest to sleep timing (explained 10% variance) and least to sleep duration (explained 1% variance). Delays in sleep timing had stronger correlations with behavioral problems including greater impulsivity and poor academic performance than reductions in sleep duration or physical activity. Additionally, the various brain measures differed in their sensitivity to RAR changes. Reductions in sleep duration were associated with decreased functional connectivity between subcortical regions and sensorimotor and cingulo-opercular networks and with enhanced functional connectivity between sensorimotor, visual and auditory networks.

Delays in sleep timing were mainly associated with grey matter changes in subcortical regions while reduced physical activity level was mostly associated with decreased integrity of white matter fiber tracts.

## **Conclusions**

The current findings corroborate the role of sleep and physical activity in adolescent's brain neurodevelopment and behavior problems. RAR might serve as biomarkers or treatment targets for monitoring or treating mental and behavioral problems in adolescents.

Key words: sleep timing, sleep duration, physical activity, grey matter, actigraphy, resting state functional connectivity, white matter integrity, Environmental factors

## INTRODUCTION

Different aspects of circadian rest-activity rhythm (RAR) including sleep timing, sleep duration and physical activity are strongly associated with mental health in adolescents. Since the launch of the Adolescent Brain Cognitive Development (ABCD) study, these associations have been replicated with this large, longitudinal sample of over 10,000 adolescents, among which sleep duration has been the most studied. Adolescents with shorter sleep duration as reported by their parents at their baseline assessment showed greater internalizing problems and impulsivity cross-sectionally and longitudinally (Cheng et al., 2020; Ho, Shah, Mishra, May, & Tapert, 2022; Yang, Liu, & Wang, 2023; Yang, Xie, & Wang, 2022; Zink, O'Connor, Blachman-Demner, Wolff-Hughes, & Berrigan, 2024), which appeared to be mediated by cortico-striatal functional connectivity (Yang et al., 2023, 2022). Starting in its second year, the ABCD study implemented actigraphy to provide with objective sleep measures. A recent ABCD study applied a machine learning approach to identify brain correlates of the actigraphy measures of sleep duration and confirmed the associations between subcortical-parietal functional connectivity and longer sleep duration. Additionally, this study also revealed an association between strengthened sensory-motor connectivity and shorter sleep duration (Mummaneni et al., 2023).

In comparison, sleep timing and chronotype have been less examined in the ABCD cohort despite accumulating evidence from other national studies showing that later sleep timing and eveningness were associated with greater risk for drug use in adolescents (Hasler et al., 2017; Haynie et al., 2018; Troxel et al., 2021). Additionally,

meta-analyses have demonstrated associations of eveningness with mood-related disturbances, anxiety and greater risk of psychotic symptoms (Cheung et al., 2023). Interestingly, stronger and more consistent associations of mood instability and impulsivity were reported for late phase timing than for sleep duration, sleep efficiency or sleep quality as measured by actigraphy (Gillett, Watson, Saunders, & McGowan, 2021). Thus far, studies have only examined associations between evening chronotype and impulsivity using the ABCD data (McCarthy, Brumback, Thomas, & Meruelo, 2023). Furthermore, there is growing evidence suggesting that physical activity not only lowers risks for developing internalizing problems including depression and anxiety, but also improves the symptoms in people suffering from mental health problems (Pearce et al., 2022; Singh et al., 2023). Similar effect was not found for externalizing symptoms (Rodriguez-Ayllon et al., 2023). In line with this, a recent ABCD study showed that adolescents with higher levels of physical activity measured by actigraphy displayed lower psychosis-like experiences and internalizing symptom severity (Damme, Vargas, Walther, Shankman, & Mittal, 2024). Finally, individual's sleep and physical activity level appears to be strongly influenced by environmental factors and social contexts. ABCD findings have highlighted the importance of socioeconomic status, household income, marital status of parents, race and sex (Giddens, Juneau, Manza, Wiers, & Volkow, 2022; Nagata et al., 2023; Xiao et al., 2023), consistent with findings from non-ABCD studies (Armstrong et al., 2018). Together, emerging evidence including from ABCD studies suggests a strong relationship between sleep duration, sleep timing, physical activity and mental health. However, the investigations have been focused on inter-individual differences in RAR and their associations with mental health including

longitudinal associations between baseline RAR and mental health at follow-up and/or vice versa. So far, no studies have examined within-subject changes in objective RAR measures and their environmental, brain and behavioral correlates. In the current study, we aimed to fill this research gap by addressing three questions 1) what environmental and demographic factors contribute to individual's RAR changes, 2) what brain measures are associated with individual's RAR changes, 3) what behavioral changes parallel individual's RAR changes.

## **METHODS AND MATERIALS**

### **Participants**

In the current study, data from the ABCD data release 5.1 (2024) were used. The longitudinal data includes 11,868 participants recruited from 21 sites across the United States. Informed consent from the primary caregiver and assent from the children were obtained. The study was approved by the Institutional Review Boards of all local study sites. For analyses, we selected a subsample of n=963 subjects who had valid Fitbit data at both the 2-year (FL2) and 4-year follow-ups (FL4). The days between FL2 and FL4 Fitbit measures varied from 300 to 1100 days among individuals. The selection criteria were outlined below.

### **RAR assessment**

Sleep and step counts were collected by wearable digital devices (Fitbit Charge series). Validation study showed adequate sensitivity of the commercial device in

measuring physical activity and sleep (Godino et al., 2020). We used derived daily sleep timing, sleep duration and step counts in the analyses. The following steps were conducted for the quality control of the Fitbit data and selections of subjects: 1) at least 60 minutes of continuous data per day, 2) the QC'd step value after all exclusions was greater than 80% of the daily reported level, 3) a minimum of 1000 steps per day, 4) a minimum of 3-hour sleep per night, 5) a minimum of 7-day physical activity and 7-night sleep data, 6) For Fitbit data at FL2, we only included data collected before the pandemic i.e., from Nov 2018 to March 2020. Fitbit data at FL4 were collected between Nov 2020 to March 2022, 6) only subjects who had data from both FL2 and FL4 were included in the analyses.

### **Measures of school, family and neighborhood environment**

In the current study we only selected environmental factors that were measured at both FL2 and FL4. For school environment, the School Risk and Protective Factors Survey was applied to examine youth's perceptions of the school climate and school engagement comprising three subscales: school environment, school involvement and school disengagement (Arthur et al., 2007; Hamilton et al., 2011). For family environment, the youths were asked to complete the Family Conflict subscale of the Family Environment Scale (Moos & Moos, 1994; Zucker et al., 2018). The Achenbach System of Empirically Based Assessment adult self-report was used to assess parents' emotional, behavioral and drug use problems and the T-score of total problems was used in the analyses (*The Achenbach System Of Empirically Based Assessment (ASEBA)*, 2009). Additionally, demographic characteristics including marital status, parental highest education and family income were considered as variables of interest.

Neighborhood safety perceived by the youth was assessed by the “Safety from Crime” items from the PhenX (Echeverria, Diez-Roux, & Link, 2004; Mujahid, Diez Roux, Morenoff, & Raghunathan, 2007). In total, there were 9 environmental variables included in the analyses.

### **Daylength and its day-to-day variations**

Increasing evidence suggests seasonal fluctuations in sleep, mood and brain functions influenced by light changes in the environment (Zhang, Shokri-Kojori, & Volkow, 2023; Zhang & Volkow, 2023). As days between FL2 and FL4 measures varied among subjects, whose data were collected at different locations and different time of the year, subjects’ RAR, mood and brain measures might be affected by light availability in the environment. In this study, we included daylength and rates of its day-to-day variations as variables of interest. We calculated daylength as the daytime plus civil twilight using R package “suncalc” for each subject using geographic location of the 21 study sites and the date of the first day of actigraphy measure. Gain/losses of daylength were calculated by subtracting the daylength of the day prior to the first day of actigraphy measure from the daylength of the first day of actigraphy measure.

### **Measures of mental and behavioral problems**

Adolescents’ psychopathology and behavior problems were assessed by the Child Behavior Checklist (CBCL) reported by caregivers (Achenbach & Rescorla, 2004). It comprises two higher order factors: externalizing and internalizing problems and their t-scores were used. The Prodromal Questionnaire–Brief Child Version was used to measure subclinical prodromal psychosis risks. The Urgency, Premeditation,



Perseverance, Sensation seeking and Positive Urgency (UPPS) impulsive behavior scale for children was used to measure different aspects of impulsivity (Cyders et al., 2007; Whiteside, Lynam, Miller, & Reynolds, 2005). For youth's grades at school, we used parent-reports and smaller scores indicated better academic performances. Substance and caffeine use in children was captured with the Youth Substance Use Interview. For drugs of abuse such as alcohol and nicotine use, the drug use in the past six months were assessed (Lisdahl et al., 2018). Based on differences in drug use at FL2 vs at FL4, we categorized subjects into "Always drug users", "Always non-drug users", "Become drug users" and "No more drug users". For caffeine intake, the typical number of caffeinated drinks consumed per week in the past six months covering coffee, espresso, tea with caffeine, soda with caffeine, and energy drinks was asked. Typical serving sizes were provided (coffee = 8 oz; espresso = 1 shot; tea = 8 oz, soda = 12 oz; energy drink = 5 oz or 2 oz for 5-h energy drink). In total, there were 11 mental and behavioral measures included in the analyses.

### **Neuroimaging measures**

Structural MRI, diffusion MRI and resting-state fMRI images were collected and processed following standardized ABCD protocols and processing pipeline (Casey et al., 2018; Hagler et al., 2019). For each modality we used imaging data that were advised by ABCD imaging group for inclusion based on a series of imaging quality control (QC) criteria including raw QC, FreeSurfer QC, postprocessing QC, numbers of frame after censoring for rfMRI etc. For more details, please see <https://wiki.abcdstudy.org/release-notes/imaging/quality-control.html>. We further

regressed out the effects of scanner type, mean head motion (for dMRI and rfMRI) and the number of remaining frames after motion censoring (for rfMRI only). For grey matter (GM) structure, we used 68 cortical thickness measures extracted from Desikan parcellation (Desikan et al., 2006), and 19 subcortical grey matter volumetric measures (GMV) (Fischl et al., 2002). Fractional anisotropy (FA) measures were used to assess microstructural tissue properties of 31 major white matter fiber tracts labelled by AtlasTrack (Hagler et al., 2009). Resting state functional connectivity (RSFC) was calculated for pairs of regions between and within 13 cortical networks defined by the Gordon atlas (Gordon et al., 2016; Van Dijk et al., 2010), as well as for between each cortical network and each subcortical ROI (n=19). In total there were 338 unique functional connectivity measures. For each modality (GM, FA, RSFC) principal component analysis (PCA) was performed on the brain changes (FL4-FL2) to extract independent components that explained the variations in the brain changes from FL2 to FL4. The number of components was determined by eigenvalues greater than 1. To keep the number of principal components (PC) consistent across three modalities, we chose the smallest number i.e., k=6.

## **Statistics**

Longitudinal RAR changes (FL4-FL2) in sleep duration, sleep timing and steps were the focus of this study and considered as dependent variables. To answer our first question of what environmental and demographic factors contribute to an individual's RAR changes, best subsets regressions were implemented to identify the optimal set of potential predictors for RAR changes using R's leap package. K-fold cross-validation

(k=5) was used to evaluate all possible models for the predictors by computing the prediction error of each model. The model with lowest prediction error was selected. We then ran multiple regression models with the optimal set of predictors. Adjusted  $r^2$ , model fit, significance and effect size of each predictor were reported. Nine environmental factors at FL2 and their longitudinal changes (FL4-FL2), three demographic characteristics (age, sex, race), days between FL2 and FL4 measures (i.e., changes in age), changes in daylength and rates of day-to-day variations were considered as potential predictors (24 potential predictors for model 1).

To answer the second question on brain correlates of RAR changes, multiple regression models were applied for each modality separately. Extracted principal components of brain changes (k=6) were included in the models as independent variables (Model 2). Multiple regression models were also used for the third question on behavioral correlates (n=11) of RAR changes (Model 3). For Model 2 and 3, sex, race and age at FL2 were included as covariates. False discovery rate (FDR) correction was applied for multiple testing. The threshold for statistical significance was set at  $p_{\text{FDR}} < .05$ .

Days between Fitbit measures and onsite visit (interview date) or brain measures varied from -450 to 80 days among subjects. Since we were interested in associations with RAR, we excluded subjects whose brain and behavior measures were not close to their actigraphy measure i.e., greater than 30 days between them. Additionally, we excluded subjects with missing values. Thus, n=725 subjects remained for model 1, n=496-565 subjects for model 2 and n=786-809 subjects for model 3.

Model 1: RAR changes ~ environmental factors at FL2 + changes in environmental factors (FL4-FL2) + changes in daylength (FL4-FL2) + changes in rates of day-to-day variations in daylength (FL4-FL2) + sex + race + Interview age at FL2 + days between FL2 and FL4 measures

Model 2: RAR changes ~ Brain PC1 (FL4-FL2) + Brain PC2 (FL4-FL2) + Brain PC3 (FL4-FL2) + Brain PC4 (FL4-FL2) + Brain PC5 (FL4-FL2) + Brain PC6 (FL4-FL2) + sex + race + Interview age at FL2

Model 3: RAR changes ~ changes in behavioral problems (FL4-FL2) + sex + race + Interview age at FL2

## RESULTS

### RAR at FL2 vs FL4

Compared to FL2, we observed shorter sleep duration (22.8 min less), delayed sleep timing (57 min later) and reduced physical activity (1378.7 steps less) at FL4 (Cohen's  $d$  .44-.75) (**Table 1**). The changes in RAR from FL2 to FL4 varied between subjects (**Table 1 & Figure S1**). There were small but significant correlations between changes in sleep duration, sleep timing and physical activity ( $r=-.28$  to  $-.10$ , all  $p<.002$ ) (**Figure S2**).

### Environmental and demographic contributors to RAR changes

The best model (with lowest prediction error) for changes in sleep duration was composed of changes in parental psychopathology, changes in school environment, marital status of parents, changes in household income, household income at FL2, and days between FL2 and FL4 measures. Among these, only the marital status of parents at FL2 was significant (Standardized  $b = .07$ ,  $p = .044$ , Cohen's  $f^2 = .01$ ) (**Figure 1**) such that children from divorced family at FL2 showed less reduction in sleep duration than children from married family. The best model explained only 1% variance, though it was significant ( $p = .02$ ).

For changes in sleep timing, the best model included changes in school involvement and disengagement, changes in parental education level, school involvement at FL2, parental education level at FL2, marital status at FL2, changes in daylength, and race. The model explained 10% variance and was significant ( $p < .001$ ). Changes in daylength (Standardized  $b = .26$ ,  $p < .001$ , Cohen's  $f^2 = .07$ ) and school involvement (Standardized  $b = -.13$ ,  $p = .003$ , Cohen's  $f^2 = .01$ ) had the greatest contribution to longitudinal changes in sleep timing (**Figure 1&S3**).

For changes in physical activity, the best model comprised changes in school involvement, race, neighborhood safety at FL2, marital status of parents at FL2, parental education level at FL2 and changes in day-to-day variations of daylength. The model explained 4% variance and was significant ( $p < .001$ ). Changes in school involvement (Standardized  $b = .10$ ,  $p = .005$ , Cohen's  $f^2 = .01$ ), changes in day-to-day variations of daylength (Standardized  $b = -.10$ ,  $p = .008$ , Cohen's  $f^2 = .01$ ) and race (black

vs white: Standardized  $b = -.10$ ,  $p = .005$ , Cohen's  $f^2 = .01$ ) had the greatest contribution to the changes in physical activity levels (**Figure 1&S3**).

Sex or age did not have significant effects on any RAR changes.

### **Brain correlates of RAR changes**

We calculated the PCs of changes in RSFC, GM and FA. For explained variance and loadings of each PC, please see **Figure 2-4** and **Figure S4-S6**. For RSFC the first 6 PCs explained 25% variance. For GMV, the first 6 PCs explained 38% variance. For FA the first 6 PCs explained 73% variance in total.

Changes in sleep duration were significantly associated with RSFC PC1, which explained 8% of variance in the RSFC changes from FL2 to FL4 (Standardized  $b = -.14$ ,  $p = .002$ , Cohen's  $f^2 = .02$ ). Reduced sleep duration was associated with decreased RSFC of subcortical regions with cortical networks particularly sensorimotor and cingulo-opercular networks and with increased cortico-cortical RSFC between sensorimotor, auditory, and visual networks (**Figure 2 & Table S1**).

Changes in sleep timing were significantly associated with GM PC6, which accounted for 2.8% of variance in longitudinal GM changes from FL2 to FL4 (Standardized  $b = .11$ ,  $p = .007$ , Cohen's  $f^2 = .01$ ) and was heavily loaded on subcortical regions. Delayed sleep timing was associated with subcortical GMV including decreases in putamen, accumbens, and ventral diencephalon and increases in thalamus and pallidum. Delayed sleep timing was negatively associated with cortical thickness in middle temporal regions and positively with insula and cingulate cortex (**Figure 3 & Table S2**).

Changes in physical activity were significantly associated with FA PC6, which explained 3.5% of variance in longitudinal FA changes from FL2 to FL4 (Standardized  $b = .09$ ,  $p = .05$ , Cohen's  $f^2 = .01$ ). Increases in physical activity were associated with increased FA in anterior thalamic radiations, cingulate and parahippocampal cingulum and decreased FA inferior longitudinal fasciculus (**Figure 4 & Table S3**).

### **Mental and behavioral correlates of RAR changes**

Delays in sleep timing but not reductions in sleep duration or physical activity levels, were associated with greater mental and behavioral problems including decline in school grades (Standardized  $b = .10$ ,  $p_{FDR} = .031$ , Cohen's  $f^2 = .01$ ) and aggravation of lack of perseverance (Standardized  $b = .11$ ,  $p_{FDR} = .017$ , Cohen's  $f^2 = .01$ ) (**Figure 5**). The associations of changes in sleep timing with psychotic risk and drug use as well as the associations of changes in physical activity with internalizing problems, academic performance and drug use did not survive corrections for multiple comparisons (**Figure 5**).

## **DISCUSSION**

The current study investigated how sleep duration, sleep timing and physical activity changed in adolescents as they grew over a 300 to 1100 day period and to identify environmental contributors to these changes as well as brain and behavioral correlates.

We revealed small to medium effects of environmental factors on the RAR changes and distinct sensitivity of the various brain measures to the changes in sleep duration, sleep timing and physical activity levels within subjects. Changes in sleep timing had stronger correlations with mental and behavioral problems than the changes in sleep duration or physical activity.

From FL2 to FL4, adolescents showed decreases in sleep duration and physical activity, and delays in sleep timing. Delays in sleep timing but not reduction in sleep duration within subjects were significantly associated with decreased academic performance and increased lack of perseverance, which is in line with previous findings also based on actigraphy showing that individuals with later sleep timing had greater mood problems and impulsivity and less so for other sleep parameters (Gillett et al., 2021). Compared to findings based on inter-individual differences of correlations between later sleep timing and psychosis-like symptoms (Cheung et al., 2023), or drug use (Hasler et al., 2017; Haynie et al., 2018; Troxel et al., 2021), in our results these correlations based on within subjects differences did not survive corrections for multiple testing. Similarly, associations between physical activity and lower internalizing problems previously reported in a cross-sectional study (Damme et al., 2024), did not survive corrections for multiple comparisons in our analyses based on longitudinal changes.

We also investigated environmental and demographic contributors to the RAR changes and found important contributions from school involvement and time of the year. Increased involvement in school including doing well in class, being part of class



discussions and activities, liking school, feeling as smart as others was associated with advanced sleep timing and higher physical activity levels. Although these associations could be bi-directional, the association between school involvement at FL2 and the extent to which sleep timing delayed from FL2 to FL4 provide support for the influence of school environment itself on sleep timing in adolescents. Interestingly, the time of the year had a large influence on the changes in both sleep timing and physical activity but in a different manner. Sleep timing was delayed when daylength was longer, peaking at the summer solstice; whereas physical activity level decreased when there were faster increases of daylength, peaking around the Spring equinox. However, these results must be interpreted cautiously as they might be attributed to school breaks rather than daylength itself. Furthermore, black adolescents showed disadvantages in longitudinal RAR changes, including greater reduction in physical activity and greater delays in sleep timing from FL2 to FL4 compared to white adolescents.

Consistent with previous ABCD findings on the correlations between actigraphy-measured sleep duration and RSFC across individuals using a machine learning approach (Mummaneni et al., 2023), we found that when an individual's sleep duration decreased, the sensorimotor connectivity was strengthened and the subcortical functional connectivity with sensorimotor and salience network became weaker. This indicates that these RSFCs changes not only predict differences between individuals in sleep duration but also differences in longitudinal changes within individuals. Interestingly, the observed  $\Delta$ RSFC patterns associated with decreased sleep duration were observed in bereaved adults who had lower scores in mindfulness and who reported higher anxiety levels (Huang et al., 2021). However, in our study we did not

find significant associations between changes in measures of sleep duration and internalizing problem as reported by parents. It is possible that parent-reports of behavioral problems, which likely reflect traits, might have not captured the state of the children at the time when the actigraphy measures were obtained. Follow up analyses of these children as they become older using self-report measures of internalizing symptoms is needed to clarify their potential association with sleep behaviors.

Previous studies reported a relationship between greater eveningness and larger GMV and cortical thickness in the medial prefrontal cortex, insula and precuneus, which are regions involved in reward evaluation and processing (Ciaramelli et al., 2021; Hoy et al., 2023) and in self-referential thinking (Cavanna & Trimble, 2006), in adolescents and adults (Rosenberg, Jacobs, Maximov, Reske, & Shah, 2018; Vulser et al., 2023). In a UK biobank study, in addition to cortical regions, GMV associations with greater eveningness were found for subcortical regions including greater GMV in bilateral nucleus accumbens, caudate, putamen, thalamus and pallidum in older adults (Norbury, 2020). In this study we observed positive association of delayed sleep timing with cortical thickness in reward-related regions as observed in previous studies (Rosenberg et al., 2018; Vulser et al., 2023). In our findings the strongest association was seen in subcortical regions. Specifically, unlike the reports in adults, in the adolescents we found associations with later sleep timing differed among subcortical regions: delays in sleep timing were associated with increased GMV in thalamus and pallidum and with decreased GMV in striatum (putamen and accumbens), and ventral diencephalon. A cross-sectional study showed that children and adolescents with later sleep timing had greater GMV in pallidum (Jalbrzikowski et al., 2021), and our within subject findings are

consistent with this study. Though the pallidum is predominantly considered as a motor region, a recent study reported that pallidal oscillations in local field potentials predicted sleep stages in patients with movement disorders providing some evidence of its role in sleep (Yin et al., 2023). Larger pallidum have also been reported in schizophrenia patients compared to controls (van Erp et al., 2016; Tu et al., 2022), though to our knowledge this has not been associated with sleep behaviors. Associations with thalamic GMV were not surprising since the thalamus is a key region for both sleep homeostatic and circadian time keeping (Chrobok et al., 2021; Jan, Reiter, Wasdell, & Bax, 2009). Interestingly, an enlarged thalamus has been reported in ADHD children in whom it is associated with inattentive severity (Fu et al., 2021). Reduced volumes in the striatum have been linked to enhanced reward sensitivity, deficits in inhibitory control (Barrós-Loscertales et al., 2006) and greater risk-taking (Schneider et al., 2012). Individuals who reported psychotic-like experiences had smaller GMV in the striatum (Schoorl et al., 2021). Although for the within-subject changes we did not find significant associations of later sleep timing with psychotic-like experiences or externalizing problems, it remains unclear whether the associations would become stronger longitudinally.

Exercise and higher physical activity level have been reported to increase the integrity of white matter fiber tracts particularly in frontal tracts such as in the genu portion of the corpus callosum, anterior cingulum area (Bashir et al., 2021) and hippocampal regions (Bracht et al., 2016). In this study, increases in physical activity (daily steps) were associated with greater FA in fibers from the frontolimbic pathway including the thalamic radiation, which connects the thalamus with the prefrontal cortex,

and in the cingulate and parahippocampal cingulum, which are relevant for emotional regulation and stability (Cheon et al., 2011; Romero et al., 2022). Unexpectedly, a negative association with physical activity was found in the inferior longitudinal fasciculus, which connects the occipital and temporal occipital regions. This is consistent with findings that world class gymnasts had lower FA in this region compared to controls, which might reflect plasticity in white matter tracts in habitual exercisers and warrants further investigation (Deng et al., 2018).

## **Conclusions**

The current study identified environmental, brain and behavioral correlates of longitudinal RAR changes, offering potential interventions targets at the individual, familial and societal levels. The ongoing ABCD study provides an opportunity to follow up with RAR associations longitudinally as adolescents progress in age. With the rising popularity of wearable devices, RAR might serve as biomarkers or treatment targets for monitoring or treating mental and behavioral problems in adolescents. In parallel, well-designed experimental or intervention studies could help elucidate the causality behind the observed longitudinal associations between RAR, environment, brain and mental outcomes.

## **Funding**

This work was accomplished with support from the National Institute on Alcohol Abuse and Alcoholism (ZIAAA000550, PI: Nora D. Volkow).

**Disclosure:** All authors declare no financial interests or potential conflicts of interest

## **ABCD Acknowledgements**

Data used in the preparation of this article were obtained from the Adolescent Brain Cognitive Development (ABCD) Study (<https://abcdstudy.org>), held in the NIMH Data Archive (NDA). This is a multisite, longitudinal study designed to recruit more than 10,000 children age 9–10 and follow them over 10 years into early adulthood. The ABCD Study is supported by the National Institutes of Health and additional federal partners under award numbers U01DA041022, U01DA041025, U01DA041028, U01DA041048, U01DA041089, U01DA041093, U01DA041106, U01DA041117, U01DA041120, U01DA041134, U01DA041148, U01DA041156, U01DA041174, U24DA041123, and U24DA041147. A full list of supporters is available at <https://abcdstudy.org/nih-collaborators>. A listing of participating sites and a complete listing of the study investigators can be found at <https://abcdstudy.org/principal-investigators.html>. ABCD consortium investigators designed and implemented the study and/or provided data but did not necessarily participate in analysis or writing of this report. This manuscript reflects the views of the authors and may not reflect the opinions or views of the NIH or ABCD consortium investigators. The ABCD data

repository grows and changes over time. The ABCD data used in this report came from <https://nda.nih.gov/study.html?id=2313>.

## REFERENCES

- Achenbach, T. M., & Rescorla, L. A. (2004). The Achenbach System of Empirically Based Assessment (ASEBA) for Ages 1.5 to 18 Years. *The Use of Psychological Testing for Treatment Planning and Outcomes Assessment: Instruments for Children and Adolescents, Volume 2, 3rd ed* (pp. 179–213). Mahwah, NJ, US: Lawrence Erlbaum Associates Publishers.
- Armstrong, S., Wong, C. A., Perrin, E., Page, S., Sibley, L., & Skinner, A. (2018). Association of Physical Activity With Income, Race/Ethnicity, and Sex Among Adolescents and Young Adults in the United States: Findings From the National Health and Nutrition Examination Survey, 2007-2016. *JAMA Pediatrics, 172*(8), 732–740.
- Arthur, M. W., Briney, J. S., Hawkins, J. D., Abbott, R. D., Brooke-Weiss, B. L., & Catalano, R. F. (2007). Measuring risk and protection in communities using the Communities That Care Youth Survey. *Evaluation and Program Planning, 30*(2), 197–211.
- Barrós-Loscertales, A., Meseguer, V., Sanjuán, A., Belloch, V., Parcet, M. A., Torrubia, R., & Avila, C. (2006). Striatum gray matter reduction in males with an overactive behavioral activation system. *The European Journal of Neuroscience, 24*(7), 2071–2074.
- Bashir, S., Al-Sultan, F., Jamea, A. A., Almousa, A., Alnafisah, M., Alzahrani, M., Abualait, T., et al. (2021). Physical exercise keeps the brain connected by increasing white matter integrity in healthy controls. *Medicine, 100*(35), e27015.
- Bracht, T., Jones, D. K., Bells, S., Walther, S., Drakesmith, M., & Linden, D. (2016). Myelination of the right parahippocampal cingulum is associated with physical activity in young healthy adults. *Brain Structure and Function, 221*(9), 4537–4548.

- Casey, B. J., Cannonier, T., Conley, M. I., Cohen, A. O., Barch, D. M., Heitzeg, M. M., Soules, M. E., et al. (2018). The Adolescent Brain Cognitive Development (ABCD) study: Imaging acquisition across 21 sites. *Developmental Cognitive Neuroscience*, The Adolescent Brain Cognitive Development (ABCD) Consortium: Rationale, Aims, and Assessment Strategy, 32, 43–54.
- Cavanna, A. E., & Trimble, M. R. (2006). The precuneus: A review of its functional anatomy and behavioural correlates. *Brain*, 129(3), 564–583.
- Cheng, W., Rolls, E., Gong, W., Du, J., Zhang, J., Zhang, X.-Y., Li, F., et al. (2020). Sleep duration, brain structure, and psychiatric and cognitive problems in children. *Molecular Psychiatry*, 1–12. Nature Publishing Group.
- Cheon, K.-A., Kim, Y.-S., Oh, S.-H., Park, S.-Y., Yoon, H.-W., Herrington, J., Nair, A., et al. (2011). Involvement of the anterior thalamic radiation in boys with high functioning autism spectrum disorders: A Diffusion Tensor Imaging study. *Brain Research*, 1417, 77–86.
- Cheung, F. T. W., Li, X., Hui, T. K., Chan, N. Y., Chan, J. W., Wing, Y. K., & Li, S. X. (2023). Circadian preference and mental health outcomes in youth: A systematic review and meta-analysis. *Sleep Medicine Reviews*, 72, 101851.
- Chrobok, L., Pradel, K., Janik, M. E., Sanetra, A. M., Bubka, M., Myung, J., Ridla Rahim, A., et al. (2021). Intrinsic circadian timekeeping properties of the thalamic lateral geniculate nucleus. *Journal of Neuroscience Research*, 99(12), 3306–3324.
- Ciaramelli, E., De Luca, F., Kwan, D., Mok, J., Bianconi, F., Knyagnytska, V., Craver, C., et al. (2021). The role of ventromedial prefrontal cortex in reward valuation and future



- thinking during intertemporal choice. (T. Kahnt, M. J. Frank, & J. Peters, Eds.) *eLife*, *10*, e67387. eLife Sciences Publications, Ltd.
- Cyders, M. A., Smith, G. T., Spillane, N. S., Fischer, S., Annus, A. M., & Peterson, C. (2007). Integration of impulsivity and positive mood to predict risky behavior: Development and validation of a measure of positive urgency. *Psychological Assessment*, *19*(1), 107–118.
- Damme, K. S. F., Vargas, T. G., Walther, S., Shankman, S. A., & Mittal, V. A. (2024). Physical and mental health in adolescence: Novel insights from a transdiagnostic examination of FitBit data in the ABCD study. *Translational Psychiatry*, *14*(1), 75.
- Deng, F., Zhao, L., Liu, C., Lu, M., Zhang, S., Huang, H., Chen, L., et al. (2018). Plasticity in deep and superficial white matter: A DTI study in world class gymnasts. *Brain Structure and Function*, *223*(4), 1849–1862.
- Desikan, R. S., Ségonne, F., Fischl, B., Quinn, B. T., Dickerson, B. C., Blacker, D., Buckner, R. L., et al. (2006). An automated labeling system for subdividing the human cerebral cortex on MRI scans into gyral based regions of interest. *NeuroImage*, *31*(3), 968–980.
- Echeverria, S. E., Diez-Roux, A. V., & Link, B. G. (2004). Reliability of self-reported neighborhood characteristics. *Journal of Urban Health: Bulletin of the New York Academy of Medicine*, *81*(4), 682–701.
- van Erp, T. G. M., Hibar, D. P., Rasmussen, J. M., Glahn, D. C., Pearlson, G. D., Andreassen, O. A., Agartz, I., et al. (2016). Subcortical brain volume abnormalities in 2028 individuals with schizophrenia and 2540 healthy controls via the ENIGMA consortium. *Molecular Psychiatry*, *21*(4), 547–553. Nature Publishing Group.

- Fischl, B., Salat, D. H., Busa, E., Albert, M., Dieterich, M., Haselgrove, C., van der Kouwe, A., et al. (2002). Whole brain segmentation: Automated labeling of neuroanatomical structures in the human brain. *Neuron*, *33*(3), 341–355.
- Fu, C., Chen, S., Qian, A., Zhou, R., Zhou, J., Li, J., Cheng, J., et al. (2021). Larger thalamus correlated with inattentive severity in the inattentive subtype of ADHD without comorbidity. *Psychiatry Research*, *304*, 114079.
- Giddens, N. T., Juneau, P., Manza, P., Wiers, C. E., & Volkow, N. D. (2022). Disparities in sleep duration among American children: Effects of race and ethnicity, income, age, and sex. *Proceedings of the National Academy of Sciences*, *119*(30), e2120009119. Proceedings of the National Academy of Sciences.
- Gillett, G., Watson, G., Saunders, K. E., & McGowan, N. M. (2021). Sleep and circadian rhythm actigraphy measures, mood instability and impulsivity: A systematic review. *Journal of Psychiatric Research*, *144*, 66–79.
- Godino, J. G., Wing, D., Zambotti, M. de, Baker, F. C., Bagot, K., Inkelis, S., Pautz, C., et al. (2020). Performance of a commercial multi-sensor wearable (Fitbit Charge HR) in measuring physical activity and sleep in healthy children. *PLOS ONE*, *15*(9), e0237719. Public Library of Science.
- Gordon, E. M., Laumann, T. O., Adeyemo, B., Huckins, J. F., Kelley, W. M., & Petersen, S. E. (2016). Generation and Evaluation of a Cortical Area Parcellation from Resting-State Correlations. *Cerebral Cortex*, *26*(1), 288–303.
- Hagler, D. J., Ahmadi, M. E., Kuperman, J., Holland, D., McDonald, C. R., Halgren, E., & Dale, A. M. (2009). Automated white-matter tractography using a probabilistic diffusion tensor atlas: Application to temporal lobe epilepsy. *Human Brain Mapping*, *30*(5), 1535–1547.

- Hagler, D. J., Hatton, S., Cornejo, M. D., Makowski, C., Fair, D. A., Dick, A. S., Sutherland, M. T., et al. (2019). Image processing and analysis methods for the Adolescent Brain Cognitive Development Study. *NeuroImage*, *202*, 116091.
- Hamilton, C. M., Strader, L. C., Pratt, J. G., Maiese, D., Hendershot, T., Kwok, R. K., Hammond, J. A., et al. (2011). The PhenX Toolkit: Get the most from your measures. *American Journal of Epidemiology*, *174*(3), 253–260.
- Hasler, B. P., Franzen, P. L., de Zambotti, M., Prouty, D., Brown, S. A., Tapert, S. F., Pfefferbaum, A., et al. (2017). Eveningness and Later Sleep Timing Are Associated with Greater Risk for Alcohol and Marijuana Use in Adolescence: Initial Findings from the National Consortium on Alcohol and Neurodevelopment in Adolescence Study. *Alcoholism, Clinical and Experimental Research*, *41*(6), 1154–1165.
- Haynie, D. L., Lewin, D., Luk, J. W., Lipsky, L. M., O'Brien, F., Iannotti, R. J., Liu, D., et al. (2018). Beyond Sleep Duration: Bidirectional Associations Among Chronotype, Social Jetlag, and Drinking Behaviors in a Longitudinal Sample of US High School Students. *Sleep*, *41*(2), zsx202.
- Ho, T. C., Shah, R., Mishra, J., May, A. C., & Tapert, S. F. (2022). Multi-level predictors of depression symptoms in the Adolescent Brain Cognitive Development (ABCD) study. *Journal of Child Psychology and Psychiatry, and Allied Disciplines*, *63*(12), 1523–1533.
- Hoy, C. W., Quiroga-Martinez, D. R., Sandoval, E., King-Stephens, D., Laxer, K. D., Weber, P., Lin, J. J., et al. (2023). Asymmetric coding of reward prediction errors in human insula and dorsomedial prefrontal cortex. *Nature Communications*, *14*(1), 8520. Nature Publishing Group.

- Huang, F.-Y., Hsu, A.-L., Chao, Y.-P., Shang, C. M.-H., Tsai, J.-S., & Wu, C. W. (2021). Mindfulness-based cognitive therapy on bereavement grief: Alterations of resting-state network connectivity associate with changes of anxiety and mindfulness. *Human Brain Mapping, 42*(2), 510–520.
- Jalbrzikowski, M., Hayes, R. A., Scully, K. E., Franzen, P. L., Hasler, B. P., Siegle, G. J., Buysse, D. J., et al. (2021). Associations between brain structure and sleep patterns across adolescent development. *Sleep, 44*(10), zsab120.
- Jan, J. E., Reiter, R. J., Wasdell, M. B., & Bax, M. (2009). The role of the thalamus in sleep, pineal melatonin production, and circadian rhythm sleep disorders. *Journal of Pineal Research, 46*(1), 1–7.
- Lisdahl, K. M., Sher, K. J., Conway, K. P., Gonzalez, R., Feldstein Ewing, S. W., Nixon, S. J., Tapert, S., et al. (2018). Adolescent brain cognitive development (ABCD) study: Overview of substance use assessment methods. *Developmental Cognitive Neuroscience, The Adolescent Brain Cognitive Development (ABCD) Consortium: Rationale, Aims, and Assessment Strategy, 32*, 80–96.
- McCarthy, M. J., Brumback, T., Thomas, M. L., & Meruelo, A. D. (2023). The relations between chronotype, stressful life events, and impulsivity in the Adolescent Brain Cognitive Development (ABCD) study. *Journal of Psychiatric Research, 167*, 119–124.
- Moos, R. H., & Moos, B. S. (1994). *Family environment scale manual*. Social climate scale (3rd ed.). Palo Alto, Calif.: Consulting Psychologists Press.
- Mujahid, M. S., Diez Roux, A. V., Morenoff, J. D., & Raghunathan, T. (2007). Assessing the measurement properties of neighborhood scales: From psychometrics to ecometrics. *American Journal of Epidemiology, 165*(8), 858–867.

- Mummaneni, A., Kardan, O., Stier, A. J., Chamberlain, T. A., Chao, A. F., Berman, M. G., & Rosenberg, M. D. (2023). Functional brain connectivity predicts sleep duration in youth and adults. *Human Brain Mapping, 44*(18), 6293–6307.
- Nagata, J. M., Alsamman, S., Smith, N., Yu, J., Ganson, K. T., Dooley, E. E., Wing, D., et al. (2023). Social epidemiology of Fitbit daily steps in early adolescence. *Pediatric Research, 94*(5), 1838–1844.
- Norbury, R. (2020). Diurnal Preference and Grey Matter Volume in a Large Population of Older Adults: Data from the UK Biobank. *Journal of Circadian Rhythms, 18*, 3.
- Pearce, M., Garcia, L., Abbas, A., Strain, T., Schuch, F. B., Golubic, R., Kelly, P., et al. (2022). Association Between Physical Activity and Risk of Depression: A Systematic Review and Meta-analysis. *JAMA Psychiatry, 79*(6), 550–559.
- Rodriguez-Ayllon, M., Neumann, A., Hofman, A., Voortman, T., Lubans, D. R., Yang-Huang, J., Jansen, P. W., et al. (2023). Neurobiological, Psychosocial, and Behavioral Mechanisms Mediating Associations Between Physical Activity and Psychiatric Symptoms in Youth in the Netherlands. *JAMA psychiatry, 80*(5), 451–458.
- Romero, S., de la Serna, E., Baeza, I., Valli, I., Pariente, J. C., Picado, M., Bargalló, N., et al. (2022). Altered White Matter Integrity at Illness Onset in Adolescents With a First Episode of Psychosis. *Frontiers in Psychiatry, 13*, 876793.
- Rosenberg, J., Jacobs, H. I. L., Maximov, I. I., Reske, M., & Shah, N. J. (2018). Chronotype differences in cortical thickness: Grey matter reflects when you go to bed. *Brain Structure & Function, 223*(7), 3411–3421.

- Schneider, S., Peters, J., Bromberg, U., Brassens, S., Miedl, S. F., Banaschewski, T., Barker, G. J., et al. (2012). Risk taking and the adolescent reward system: A potential common link to substance abuse. *The American Journal of Psychiatry*, *169*(1), 39–46.
- Schoorl, J., Barbu, M. C., Shen, X., Harris, M. R., Adams, M. J., Whalley, H. C., & Lawrie, S. M. (2021). Grey and white matter associations of psychotic-like experiences in a general population sample (UK Biobank). *Translational Psychiatry*, *11*(1), 1–11. Nature Publishing Group.
- Singh, B., Olds, T., Curtis, R., Dumuid, D., Virgara, R., Watson, A., Szeto, K., et al. (2023). Effectiveness of physical activity interventions for improving depression, anxiety and distress: An overview of systematic reviews. *British Journal of Sports Medicine*, *57*(18), 1203–1209. BMJ Publishing Group Ltd and British Association of Sport and Exercise Medicine.
- The Achenbach System Of Empirically Based Assessment (ASEBA): Development, Findings, Theory, And Applications*. (2009). . Burlington, VT: University of Vermont Research Center for Children, Youth, & Families. Retrieved February 13, 2024, from <https://aseba.org/the-achenbach-system-of-empirically-based-assessment/>
- Troxel, W. M., Rodriguez, A., Seelam, R., Tucker, J. S., Shih, R. A., Dong, L., & D’Amico, E. J. (2021). Longitudinal associations of sleep problems with alcohol and cannabis use from adolescence to emerging adulthood. *Sleep*, *44*(10), zsab102.
- Tu, P.-C., Chang, W.-C., Chen, M.-H., Hsu, J.-W., Lin, W.-C., Li, C.-T., Su, T.-P., et al. (2022). Identifying common and distinct subcortical volumetric abnormalities in 3 major psychiatric disorders: A single-site analysis of 640 participants. *Journal of Psychiatry & Neuroscience: JPN*, *47*(3), E230–E238.

- Van Dijk, K. R. A., Hedden, T., Venkataraman, A., Evans, K. C., Lazar, S. W., & Buckner, R. L. (2010). Intrinsic Functional Connectivity As a Tool For Human Connectomics: Theory, Properties, and Optimization. *Journal of Neurophysiology*, *103*(1), 297–321.
- Vulser, H., Lemaître, H. S., Guldner, S., Bezivin-Frère, P., Löffler, M., Sarvasmaa, A. S., Massicotte-Marquez, J., et al. (2023). Chronotype, Longitudinal Volumetric Brain Variations Throughout Adolescence, and Depressive Symptom Development. *Journal of the American Academy of Child & Adolescent Psychiatry*, *62*(1), 48–58. Elsevier.
- Whiteside, S. P., Lynam, D. R., Miller, J. D., & Reynolds, S. K. (2005). Validation of the UPPS impulsive behaviour scale: A four-factor model of impulsivity. *European Journal of Personality*, *19*(7), 559–574.
- Xiao, Y., Mann, J. J., Chow, J. C.-C., Brown, T. T., Snowden, L. R., Yip, P. S.-F., Tsai, A. C., et al. (2023). Patterns of Social Determinants of Health and Child Mental Health, Cognition, and Physical Health. *JAMA pediatrics*, *177*(12), 1294–1305.
- Yang, F. N., Liu, T. T., & Wang, Z. (2023). Corticostriatal connectivity mediates the reciprocal relationship between parent-reported sleep duration and impulsivity in early adolescents. *Journal of Child Psychology and Psychiatry, and Allied Disciplines*, *64*(11), 1545–1554.
- Yang, F. N., Xie, W., & Wang, Z. (2022). Effects of sleep duration on neurocognitive development in early adolescents in the USA: A propensity score matched, longitudinal, observational study. *The Lancet. Child & Adolescent Health*, *6*(10), 705–712.
- Yin, Z., Jiang, Y., Merk, T., Neumann, W.-J., Ma, R., An, Q., Bai, Y., et al. (2023). Pallidal activities during sleep and sleep decoding in dystonia, Huntington's, and Parkinson's disease. *Neurobiology of Disease*, *182*, 106143.

Zhang, R., Shokri-Kojori, E., & Volkow, N. D. (2023). Seasonal effect—An overlooked factor in neuroimaging research. *Translational Psychiatry, 13*(1), 1–6. Nature Publishing Group.

Zhang, R., & Volkow, N. D. (2023). Seasonality of brain function: Role in psychiatric disorders. *Translational Psychiatry, 13*(1), 1–11. Nature Publishing Group.

Zink, J., O'Connor, S. G., Blachman-Demner, D. R., Wolff-Hughes, D. L., & Berrigan, D. (2024). Examining the Bidirectional Associations Between Sleep Duration, Screen Time, and Internalizing Symptoms in the ABCD Study. *The Journal of Adolescent Health: Official Publication of the Society for Adolescent Medicine, 74*(3), 496–503.

Zucker, R. A., Gonzalez, R., Feldstein Ewing, S. W., Paulus, M. P., Arroyo, J., Fuligni, A., Morris, A. S., et al. (2018). Assessment of culture and environment in the Adolescent Brain and Cognitive Development Study: Rationale, description of measures, and early data. *Developmental Cognitive Neuroscience, 32*, 107–120.



**Table 1** RAR at FL2 and FL4

RAR	FL2 Mean (SD)	FL4 Mean (SD)	Paired t- tests P-value	Effect size (Cohen's d)	FL4-FL2 Differences (range)
Sleep duration (min)	452.11 (34.91)	429.25 (40.22)	<.001	.60 (medium)	[-167.33, 170.85]
Sleep timing	23.01 (1.14)	23.96 (1.35)	<.001	.75 (medium)	[-5.04, 6.23]
Physical activity (Steps)	9298.67 (2910.32)	7919.93 (3202.83)	<.001	.44 (small)	[-13618.92, 10050.64]

## Figure legends

### Figure 1 Environmental and demographic contributors to longitudinal RAR changes

Predictors included in the best model are colored. The color represents the standardized coefficients for each predictor. \* denotes significant predictors for RAR changes. \*\*  $p < .001$ , \*  $p < .05$ , diff: differences between FL2 and FL4.

### Figure 2 RSFC (FL4-FL2) component associated with longitudinal changes in sleep duration

Loadings of RSFC component 1 are illustrated. Left: A chord chart depicts RSFC between cortical networks.  $|\text{loadings}| > 0.04$  are illustrated. Right: RSFC between subcortical regions and cortical networks. Red indicates positive loading while blue indicates negative loadings.  $|\text{loadings}| > 0.1$  are illustrated.

ngd: Gordon cortical networks, scs: subcortical regions, vta: ventral attention, vs: visual, smm: sensorimotor mouth, smh: sensorimotor hand, sa: salience, rst: retrosplenial temporal, fopa: fronto-parietal, dsa: dorsal attention, df: default mode, copa: cingulo-parietal, cerc: cingulo-opercular, au: auditory, aa: accumbens-area, ag: amygdala, bs: brain-stem, cde: caudate, crc: cerebellum, hp: hippocampus, pl: pallidum, pt: putamen, thp: thalamus-proper, vtcd: ventral diencephalon.

### **Figure 3 GM (FL4-FL2) component associated with longitudinal changes in sleep timing**

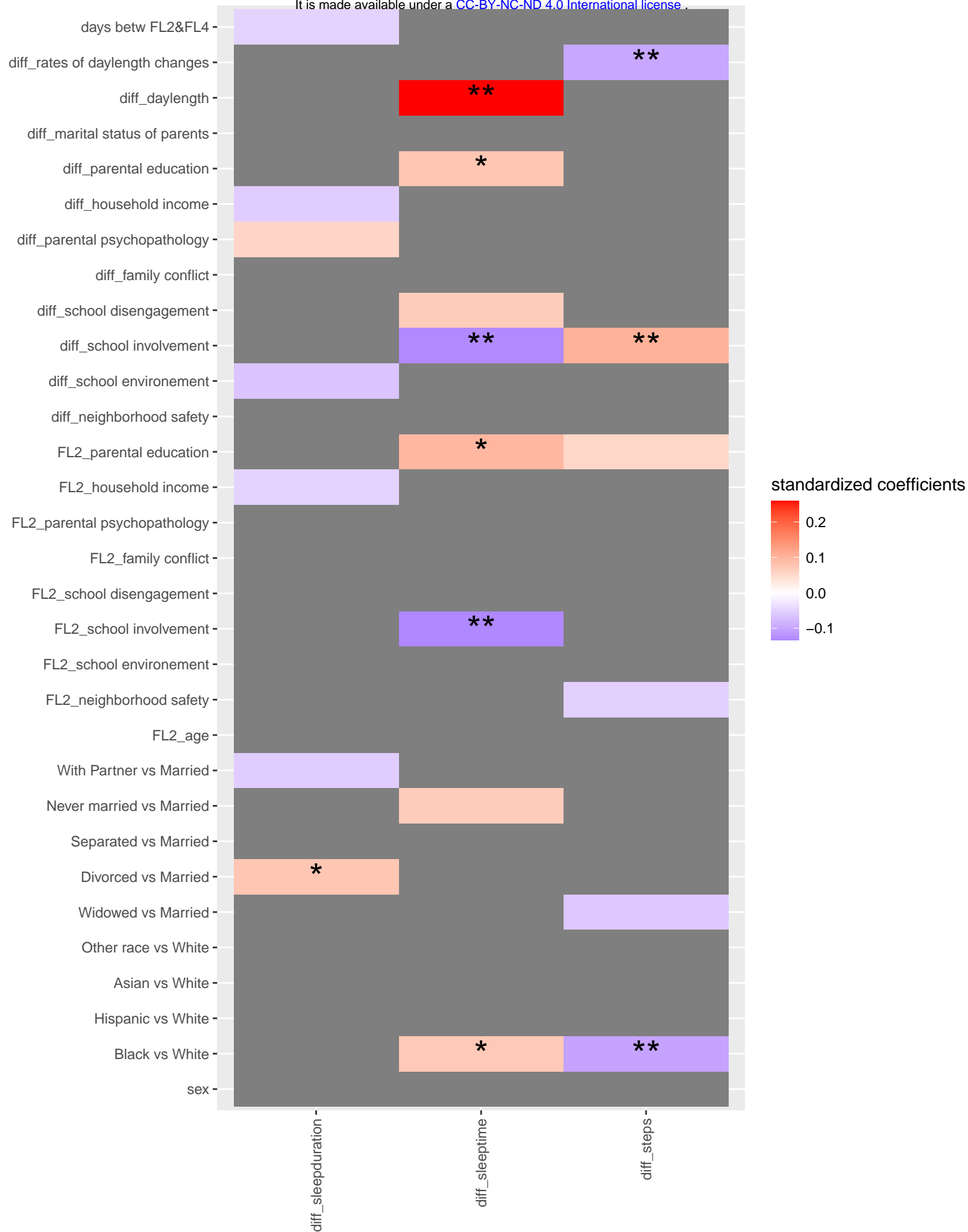
Loadings of GM component 6 are illustrated. Loadings on cortical thickness (upper), loading on subcortical grey matter volumes (bottom).

### **Figure 4 FA (FL4-FL2) component associated with longitudinal changes in physical activity**

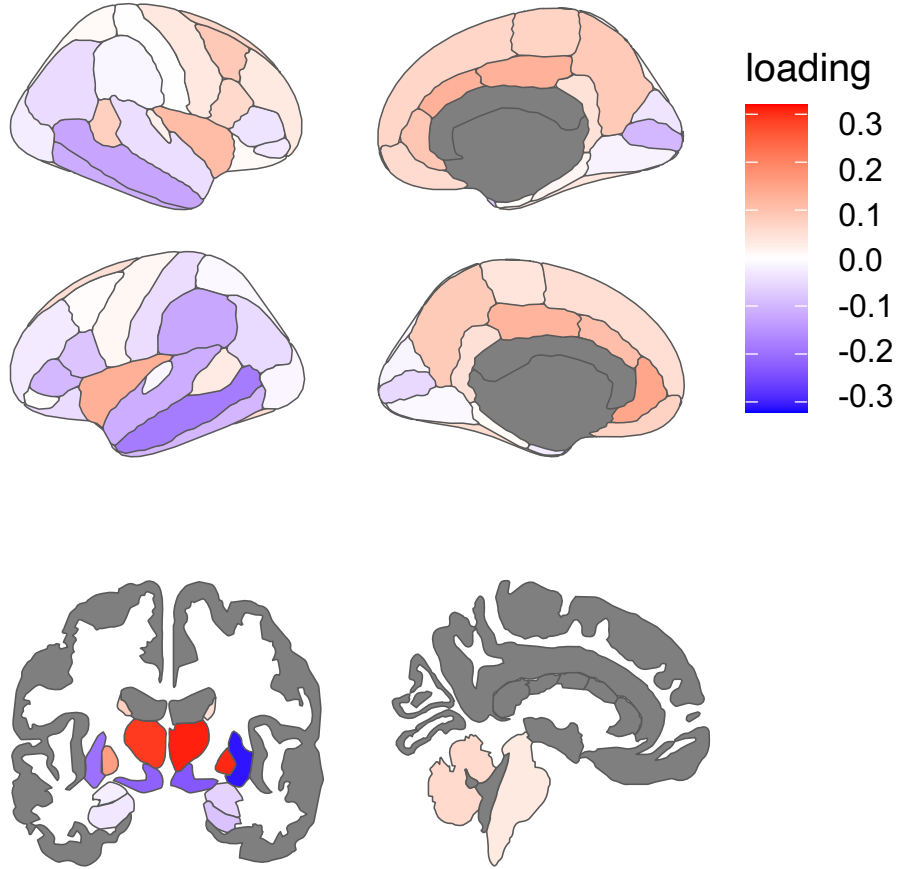
Loadings of FA component 6 are illustrated. White matter tracts with positive loadings (left), white matter tracts with negative loadings (right). CgC: cingulate cingulum, CgH: parahippocampal cingulum, ATR: anterior thalamic radiations, ILF: inferior longitudinal fasciculus.

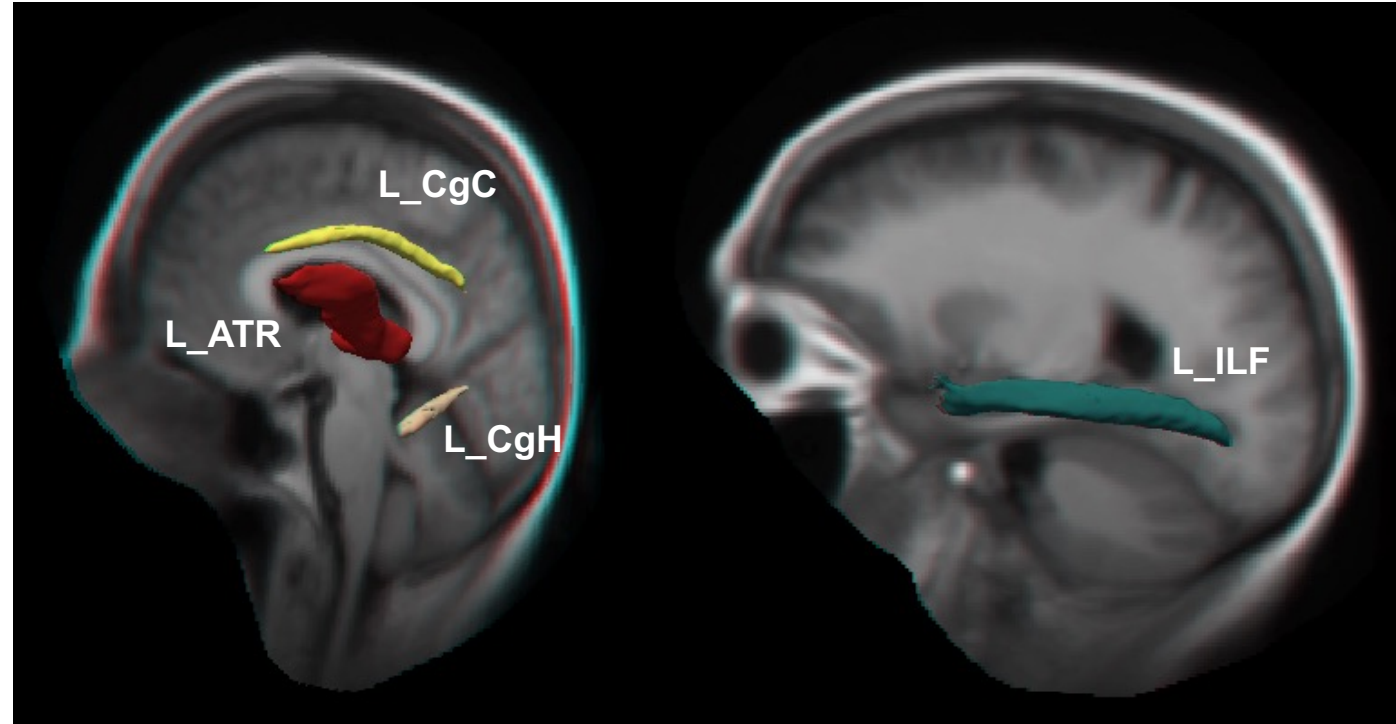
### **Figure 5 Behavioral correlates of longitudinal RAR changes**

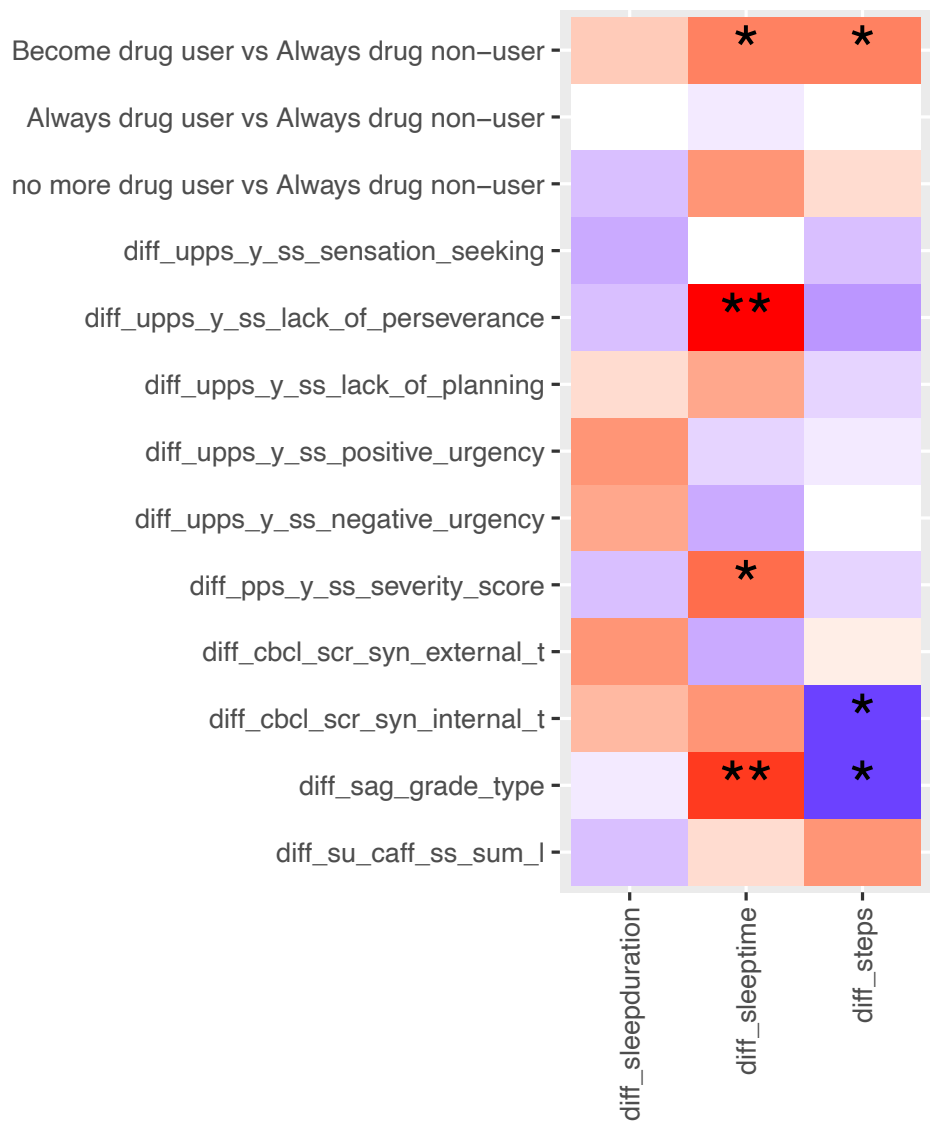
Correlations between changes in RAR and behavioral problems after regressing out sex age and race. The color in the heatmap represents the standardized coefficients. \*\*  $p_{FDR} < .05$ , \*  $p_{uncorr} < .05$ . Caff\_ss\_sum: weekly caffeine consumptions, pps\_y\_severity\_score: severity score for early risks for psychosis, diff: differences between FL2 and FL4.











standardized coefficients

